



Transcriptional profiling of *Vibrio parahaemolyticus* *exsA* reveals a complex activation network for type III secretion

Aaron C. Liu¹ and Nikhil A. Thomas^{1,2*}

¹ Department of Microbiology and Immunology, Dalhousie University, Halifax, NS, Canada, ² Department of Medicine (Infectious Diseases), Dalhousie University, Halifax, NS, Canada

OPEN ACCESS

Edited by:

Dongsheng Zhou,
Beijing Institute of Microbiology and
Epidemiology, China

Reviewed by:

Qingping Zhong,
South China Agricultural University,
China

Matthew S. Francis,
Umeå University, Sweden

*Correspondence:

Nikhil A. Thomas,
Dalhousie University, Tupper Medical
Building, 7th floor, 5850 College
Street, Halifax, NS B3H 4R2, Canada
n.thomas@dal.ca

Specialty section:

This article was submitted to
Food Microbiology,
a section of the journal
Frontiers in Microbiology

Received: 30 June 2015

Accepted: 22 September 2015

Published: 20 October 2015

Citation:

Liu AC and Thomas NA (2015)
Transcriptional profiling of *Vibrio*
parahaemolyticus *exsA* reveals a
complex activation network for type III
secretion. *Front. Microbiol.* 6:1089.
doi: 10.3389/fmicb.2015.01089

Vibrio parahaemolyticus (Vp) is a marine halophilic bacterium that is commonly associated with oysters and shrimp. Human consumption of contaminated shellfish can result in Vp mediated gastroenteritis and severe diarrheal disease. Vp encodes two type 3 secretion systems (T3SS-1 and T3SS2) that have been functionally implicated in cytotoxicity and enterotoxicity respectively. In this study, we profiled protein secretion and temporal promoter activities associated with *exsA* and *exsB* gene expression. *exsA* is an AraC-like transcriptional activator that is critical for activating multiple operons that encode T3SS-1 genes, whereas *exsB* is thought to encode an outer membrane pilin component for T3SS-1. The *exsBA* genetic locus has two predicted promoter elements. The predicted *exsB* and *exsA* promoters were individually cloned upstream of *luxCDABE* genes in reporter plasmid constructs allowing for *in situ*, real-time quantitative light emission measurements under many growth conditions. Low calcium growth conditions supported maximal *exsB* and *exsA* promoter activation. *exsB* promoter activity exhibited high basal activity and resulted in an *exsBA* co-transcript. Furthermore, a separate proximal *exsA* promoter showed initial low basal activity yet eventually exceeded that of *exsB* and reached maximal levels after 2.5 h corresponding to an entry into early log phase. *exsA* promoter activity was significantly higher at 30°C than 37°C, which also coincided with increased secretion levels of specific T3SS-1 effector proteins. Lastly, bioinformatic analyses identified a putative expanded ExsA binding motif for multiple transcriptional operons. These findings suggest a two wave model of Vp T3SS-I induction that integrates two distinct promoter elements and environmental signals into a complex ExsA activation framework.

Keywords: Type III secretion, transcription activator, gene regulation, environmental sensing

Introduction

Vibrio parahaemolyticus (Vp) is a significant food borne human pathogen associated with severe diarrhea arising from enteric infections (Ceccarelli et al., 2014). It has also been associated to a lesser extent with wound infections and septicemia. A pandemic serotype Vp O3:K6 has emerged, reaching many continents of the world, suggesting that this serotype has adapted to efficiently establish disease in humans (Velazquez-Roman et al., 2014). Sequence data from various Vp isolates

indicate that many but not all human pathogenic strains contain two type III secretion systems (T3SS) (Makino et al., 2003; Banerjee et al., 2015). Studies using a small animal infection model with Vp strain RIMD2216330 (O3:K6) have demonstrated that both secretion systems function to deliver effector proteins into host cells, with T3SS-1 likely contributing to host cell cytotoxicity and T3SS-2 being involved in intestinal disruption and acute diarrhea (Ritchie et al., 2012). Therefore, it has been established that type III secretion is a key facet of Vp infection biology. In contrast, little is known regarding what environmental or host factors contribute to regulating T3SS genes and only a few studies have evaluated Vp T3SS gene regulation (Kodama et al., 2010a; Zhou et al., 2010a; Livny et al., 2014).

The majority of T3SS-1 associated genes within Vp are found in operon or co-transcribed units, similar to the situation found in other pathogens that express T3SS. Regulation of T3SS-1 genes in *V. parahaemolyticus* occurs in part through its transcriptional activator ExsA and a cognate anti-activator ExsD (Zhou et al., 2008), presumably functioning in a manner similar to the homologs that are found in *Pseudomonas aeruginosa* (King et al., 2013). ExsA is considered a member of the AraC/XylR transcriptional activator family and physically binds and bends DNA to activate gene transcription as demonstrated in both Vp and *P. aeruginosa* (Zhou et al., 2008; Brutinel et al., 2009). ExsA family members are thought to recognize and bind DNA via two intrinsic helix turn helix (HTH) domains. In the case of *P. aeruginosa*, two adjacent DNA binding sites are thought to support binding of two ExsA monomers (Diaz et al., 2011). Moreover, the monomers interact with their respective amino-terminal domains to form a functional ExsA homodimer. ExsD acts as an anti-activator, binding to an ExsA monomer within the cell, thereby preventing ExsA from binding to DNA and limiting ExsA dependent gene transcription (Zhou et al., 2010a; Kodama et al., 2010b). ExsA is likely involved in transcriptional activation of 8 or more operons which contain over 40 T3SS-1 associated genes, thereby placing it as a key activator of T3SS-1 expression.

Specific environmental signals that are sensed by pathogens often result in temporal and coordinated virulence gene expression. Temperature and low calcium has been implicated in inducing active type III secretion for a variety of pathogens (Fields et al., 1994; Thomas et al., 2005; Diaz et al., 2011), although the regulatory mechanisms that promote secretion events remain poorly understood. Many studies have demonstrated that low calcium growth conditions support the expression of the *P. aeruginosa* T3SS gene repertoire in an ExsA dependent manner (Diaz et al., 2011). Recently, a proteomic study revealed that low calcium growth conditions supported protein expression and secretion for many of the Vp T3SS-1 translocators and effectors (Sarty et al., 2012). It has also been reported that Vp *exsA* gene expression was upregulated when Vp was in contact with HeLa cells, indicating that T3SS-1 gene expression is induced during infection-like conditions (Zhou et al., 2008). Moreover, low cell density has been observed to promote Vp and *V. harveyi* T3SS-1 gene expression via quorum sensing mechanisms (Henke and Bassler, 2004). In contrast, *exsA* gene expression is inhibited by the global negative regulator

H-NS (Sun et al., 2015). Still, environmental signals and requisite genetic mechanisms that result in *exsA* gene transcription, and hence T3SS-1 activation, remain unresolved.

In this study we set out to evaluate what factors contribute to T3SS-1 expression. Based on previous studies that evaluated T3SS-1 protein expression (Park et al., 2004b; Ono et al., 2006; Sarty et al., 2012), we assayed *in situ* real-time *exsB* and *exsA* promoter activity under various culture conditions which revealed differential activation patterns. Total secreted protein profiles for tested cultured conditions further revealed differential secretion of translocators and effectors. The data suggest a two wave model of Vp T3SS-1 induction that integrates environmental signals into a complex ExsA activation framework.

Materials and Methods

Bacterial Strains and Growth Conditions

Bacterial strains generated and used in this study are listed in **Table 1**. Bacteria were routinely cultured in Luria broth (LB) [Sigma, L3522] at 37°C with shaking at 200 r.p.m., or 30°C at 250 r.p.m. for specific assays. Antibiotics (Sigma) were added when appropriate, to a final concentration of 100 µg kanamycin ml⁻¹ (for Vp strains) or 50 µg for *Escherichia coli* DH5α. Sterile media supplements (MgSO₄, EGTA, CaCl₂) were added to basal LB media from concentrated stock solutions followed by a brief 10 min equilibration prior to use in assays.

TABLE 1 | Bacterial strains and plasmids used in this study.

	Description	Source/Reference
STRAIN		
<i>Vibrio parahaemolyticus</i> O3:K6 RIMD 2210633	Wild type <i>Vibrio parahaemolyticus</i>	Makino et al., 2003
Vp ΔvscN1	Non-functional T3SS1	Sarty et al., 2012
Vp ΔvscN1/ΔvscN2	Non-functional T3SS1 and T3SS2	Sarty et al., 2012
DH5α	<i>E. coli</i> cloning strain	
PLASMID		
pJW15	Vector containing promoter-less <i>luxCDABE</i>	Macritchie et al., 2008
pexsA-lux	<i>exsA</i> promoter cloned into pJW15 with	This study
pexsB-lux	<i>exsB</i> promoter cloned into pJW15 with	This study
pexsD-lux	<i>exsD</i> promoter cloned into pJW15	This study
prpI-lux	<i>exsD</i> promoter cloned into pJW15	This study
pFLAG-CTC	Plasmid used to incorporate tac promoter and C-terminal FLAG tag to cloned DNA	Sigma
pVSV105	<i>Vibrio</i> specific vector, replicates in Vp and DH5α/pir	Eric Stabb
pexsA-FLAG	Expresses ExsA-FLAG from a tac promoter	This study

Recombinant DNA Techniques

All PCR, cloning, and recombinant DNA techniques were performed using standard protocols. Routine DNA cloning steps were performed in DH5 α , followed by introducing relevant recombinant plasmids into Vp using electroporation. Restriction endonucleases and DNA polymerases were purchased from New England Biolabs (NEB). Oligonucleotide primers were obtained from Integrated DNA Technologies (IDT) (Table 2). pJW15 contains a promoter-less *luxCDABE* cassette (Macritchie et al., 2008) and served as a vector for cloning *exsA*, *exsB*, *exsD*, and *rplN* promoter fragments. To generate a recombinant ExsA-FLAG expression plasmid, Vp *exsA* (without a stop codon) was amplified from chromosomal DNA by PCR using primers NT387 and NT388 followed by cloning into pFLAG-CTC. A PCR using primers NT139 and NT140 and *exsA*/pFLAG-CTC as DNA template yielded a product containing a 5' *tac* promoter and a 3' FLAG tag fused to *exsA*. The product was finally blunt end cloned into pVSV105 and the resulting plasmid was introduced into Vp by conjugal mating. All plasmid constructs were subjected to DNA sequence analyses to verify cloned DNA.

Reverse Transcriptase (RT)-PCR

Total RNA was isolated from Vp using a Qiagen RNeasy kit. RNA preparations were treated with DNase and then column purified. Reverse transcription reactions using primer AL400 were performed with Omniscript reverse transcriptase (Qiagen) using the protocol described by the manufacturer. A PCR reaction using cDNA template generated from the reverse step was performed using primers AL399 and AL400. A separate PCR using Vp genomic DNA was used to generate the predicted amplicon control of 1.5 kb. The amplicon spans the partial open reading frame of *exsB* to within *exsA*, including the intergenic region.

Luciferase (*lux*) Reporter Assays

Luciferase reporter assays were performed similar to a previous promoter study (Brouwers et al., 2012). End-point or multiple point assays were performed with Vp strains harboring *lux* plasmid constructs. For end-point assays, starting cultures

(OD₅₉₅ 0.025) were grown for 2.5 h in LB supplemented with magnesium and ethylene glycol tetracetic acid (Mg+EGTA) followed by a OD₅₉₅ measurement by a Biophotometer Plus (Eppendorf) at a path length of 10 mm. The samples were then aliquoted into clear bottom white walled multiwell plates (Costar #3610) and measured for light emission by counts per second (c.p.s.) using a Victor X5 instrument (Perkin Elmer). For multiple time point assays, the relevant samples were initially prepared in the same way as for the end-point assays, followed by immediate OD₅₉₅ and cps reading at each time point. The data were subjected to a Two Way ANOVA with a standard Tukey test. Plotted data is the average from three experiments. Data was plotted using GraphPad Prism5 software.

Protein Secretion Assays

A secretion assay protocol using syringe end filters was used to produce total secreted protein fractions from Vp culture supernatants (Sarty et al., 2012). Briefly, bacterial cultures (starting OD₅₉₅ 0.025, 30°C, 250 rpm) were harvested after 4 h of growth. Three milliliters of culture was centrifuged to remove whole cells, followed by filtering the clarified supernatant through a 0.22 μ m PVDF syringe-end filter (Millipore). The resulting culture supernatant was subjected to trichloroacetic acid precipitation [10% (vol/vol)] on ice. The sample was centrifuged at 16,000 \times g followed by resuspending the pellet in 10 μ l electrophoretic sample loading buffer (2XESB) as previously described (Sarty et al., 2012).

Protein Electrophoresis

All protein samples were separated by SDS-PAGE as described elsewhere (Laemmli, 1970). Separated polypeptides were visualized by Coomassie G-250 blue staining.

Results

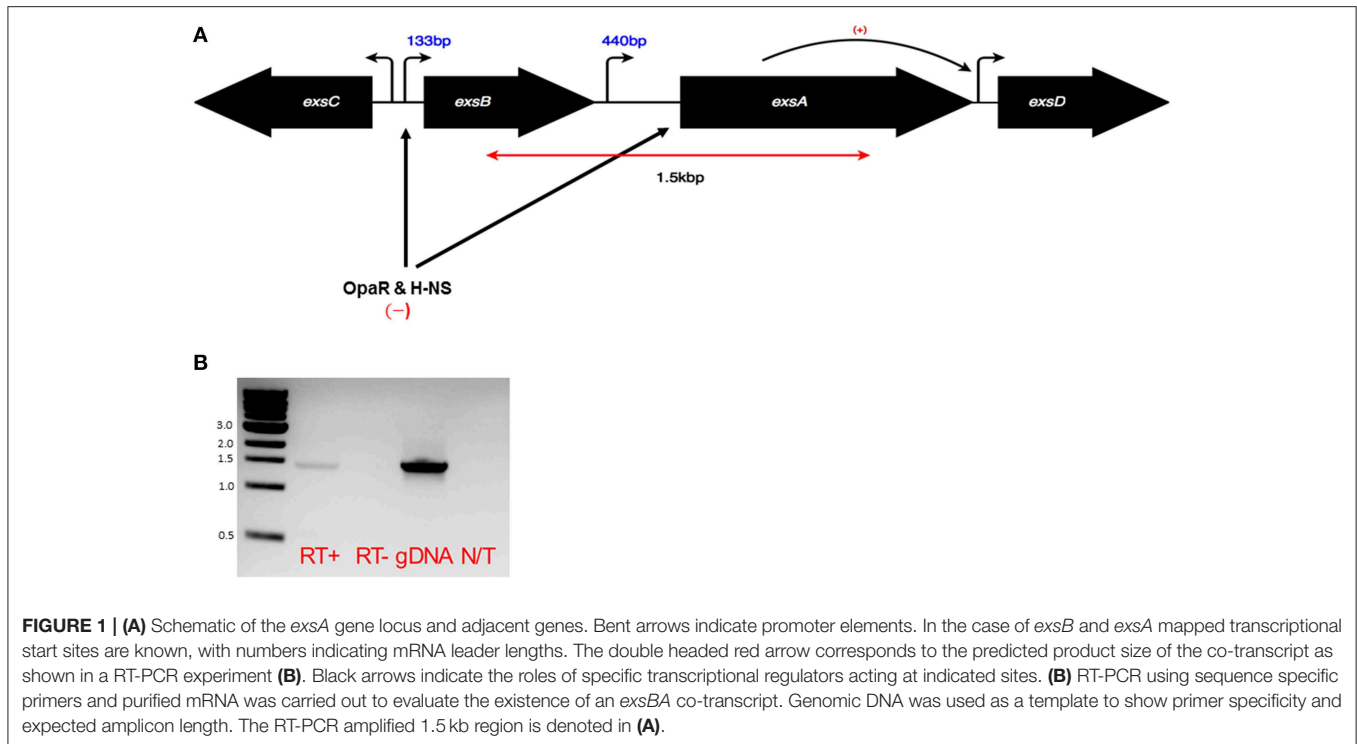
Evaluation of *exsA* and *exsB* Promoter Activities

The Vp *exsBA* genetic locus has two promoter elements that support transcription initiation upstream of *exsB* and *exsA* respectively (Sun et al., 2015) (Figure 1A). In *V. harveyi*, a multigene *exsBA* transcript has been detected, presumably driven from the *exsB* promoter (Waters et al., 2010). This observation is somewhat surprising given the long intergenic region between *exsB* and *exsA*, in addition to the presence of gene specific promoters. Therefore, we set out to determine if Vp *exsBA* are co-transcribed. As shown in Figure 1B, Vp generated an *exsBA* mRNA co-transcript as determined by reverse transcription PCR (RT-PCR).

To investigate individual *exsB* and *exsA* promoters, the relevant chromosomal DNA fragments were fused to a promoterless *luxCDABE* gene cassette within pJW15 (Table 1). Plasmids *pexsA-lux*, *pexsB-lux* and pJW15 were each electroporated into wild type Vp. Notably, the *pexsB-lux* and *pexsA-lux* transformant colonies recovered post- electroporation were observed to emit light when grown on solid LB agar, whereas the transformants harboring pJW15 did not emit light (data not shown). This indicated that the cloned *exsB* and *exsA* promoters were functional and supported transcriptional activity when Vp was grown on LB.

TABLE 2 | Oligonucleotides used in this study.

Title	Sequence	
NT337	CCGAATTC AATCGGTTACATTTAATTAGCGC	<i>pexsA-lux</i>
NT339	CCGGATCCC GTTTCTGTGTTAGTTGGCCTG	<i>pexsA-lux</i>
AL397	CCGAATTCGCGTGCTGACATAGAAACAGTCCT	<i>pexsB-lux</i>
AL398	GCGGATCCGACTGAGCGCATCCAGTCAATAAC	<i>pexsB-lux</i>
AL399	TCCGTT CAGAGCCAAGCGAATGTAT	RT-PCR
AL400	CTGCGATAGCAAGGCATAGAGGACT	RT-PCR
AL412	TTGAATTCG TGATGAGCAAGTCGCCATCGCGA	<i>pexsD-lux</i>
AL414	ATTGGATCCTGCGTACAATGCTGT CAGGA	<i>pexsD-lux</i>
AL415	TTGAATTC AAGGCGAAGATGTAATCTTCACTC	<i>prlpN-lux</i>
AL416	AAGGATCCATCAGCTGCGTCCAGCATACTT	<i>prlpN-lux</i>
NT139	CATCATAACGGTTCTGGCAAATATTC	pFLAG-CTC
NT140	CTGTATCAGGCTGAAAATCTTCTCTC	pFLAG-CTC
NT387	AAACCGCATATGGATGTGTCAGGCCAACTAAACAC	<i>exsA</i>
NT388	CCGGTACCATTGCGCATGGCGACTTGCTCATCACC	<i>exsA</i>



ExsA is known to act at many Vp T3SS-1 operons, including those involved in forming secretion apparatus components (Zhou et al., 2008). Using Vp harboring *pexsA-lux*, we set out to evaluate *exsA* gene expression under a variety of media conditions at 30°C. This growth temperature was previously shown to support high levels of translocon and effector protein secretion via T3SS-1 (Sarty et al., 2012). We show here that LB supports low level *exsB* and *exsA* promoter activity therefore we used it as the derivation point for the basal growth media. In luciferase (*lux*) assay experiments, real-time *in situ exsA* promoter activation is directly proportional to light emitted from the bacterial culture (Meighen, 1993). When Vp with *pexsA-lux* was grown in LB for 1 h, a basal level of *exsA* promoter activation was observed (Figure 2), consistent with the light emitting colonies observed when Vp was grown on LB agar. Vp *exsA* promoter activity for LB supplemented with magnesium or calcium was comparable to LB alone, however, LB supplemented with magnesium and EGTA produced significantly elevated *exsA* promoter activation (Figure 2). *exsA* promoter activation was even more pronounced after 3 h. Bacteria continued to demonstrate *exsA* promoter activation in LB supplemented with magnesium and EGTA after 4 h of incubation, although promoter activity exhibited a decreasing trend from that observed after 3 h. The data indicate that LB containing magnesium and EGTA supported maximal *exsA* and *exsB* promoter activation. LB that contained magnesium, calcium, or both elements, all supported basal level activation comparable to LB (only). Notably, the addition of calcium to LB media containing magnesium and EGTA lowered *exsA* and *exsB* promoter activation (over all time points evaluated) implicating calcium sensing in T3SS-1 gene expression (see Discussion).

Experiments to evaluate *exsB* promoter activation revealed a similar trend to that observed for the *exsA* promoter (Figure 3). One notable difference was that *exsB* promoter activity was higher (10000–12000 units) than that of *exsA* (5000–7000 units) at early time points (0–30 min). Maximal *exsA* and *exsB* promoter activation occurred at 2.5 h in growth media containing Mg+EGTA. This time point also corresponded to when the bacteria were entering into early log phase growth (Figure 3). The effect of growth media on *exsB* promoter activation was similar to that observed for *exsA* promoter activation (Figure S1). Collectively, these data quantitatively demonstrate differential activity profiles for *exsB* and *exsA*.

T3SS-1 Activity Is Not Required for Vp *exsA* Gene Expression

For many pathogens with a T3SS, a negative regulator protein is often secreted through the assembled T3SS apparatus. This action typically leads to effector gene expression. For Vp, the negative regulator ExsE interacts with ExsC within the cytoplasm, which allows ExsD to inhibit ExsA activity. Upon secretion of ExsE by the T3SS-1, ExsC interacts with ExsD, thereby allowing ExsA to activate T3SS-1 associated genes (Kodama et al., 2010b). To assess whether ExsE secretion impacts on *exsA* promoter activity, the *pexsA-lux* construct was introduced into Vp $\Delta vscN$ and Vp $\Delta vscN1\Delta vscN2$. These mutants are defective for T3SS-1 and T3SS-1 and T3SS-2 respectively due to the absence of ATPases normally required for function. As shown in Figure 4A, *exsA* promoter activity was unchanged in $\Delta vscN$ and $\Delta vscN1\Delta vscN2$ compared to the activity observed for wild type. Furthermore, we profiled *exsA* promoter activity within $\Delta vscN$ over 4 h and did not see any change compared to wild type Vp (Figure S1).

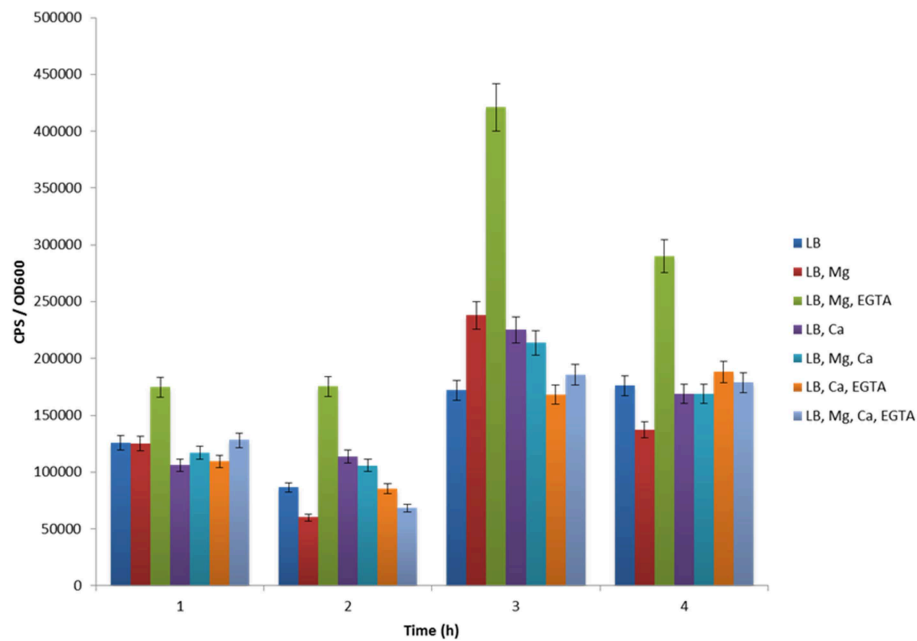


FIGURE 2 | The effect of various growth media formulations on *exsA* promoter activity. Maximal *exsA* promoter activity was evident when Vp was grown in LB+Mg+EGTA for all time points assessed.

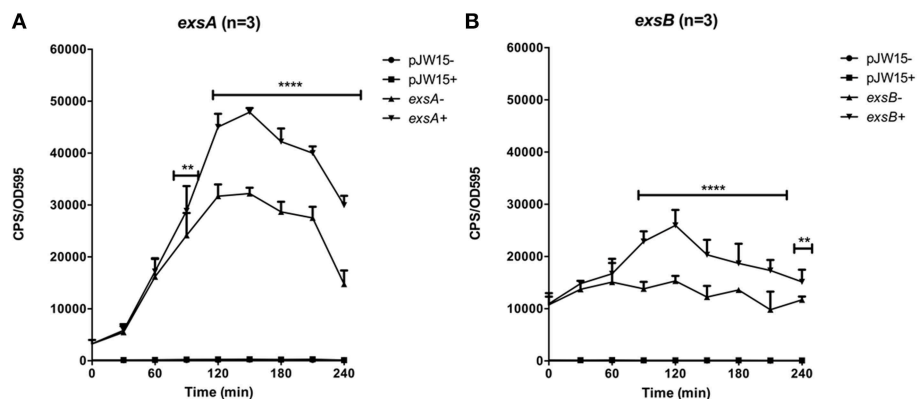


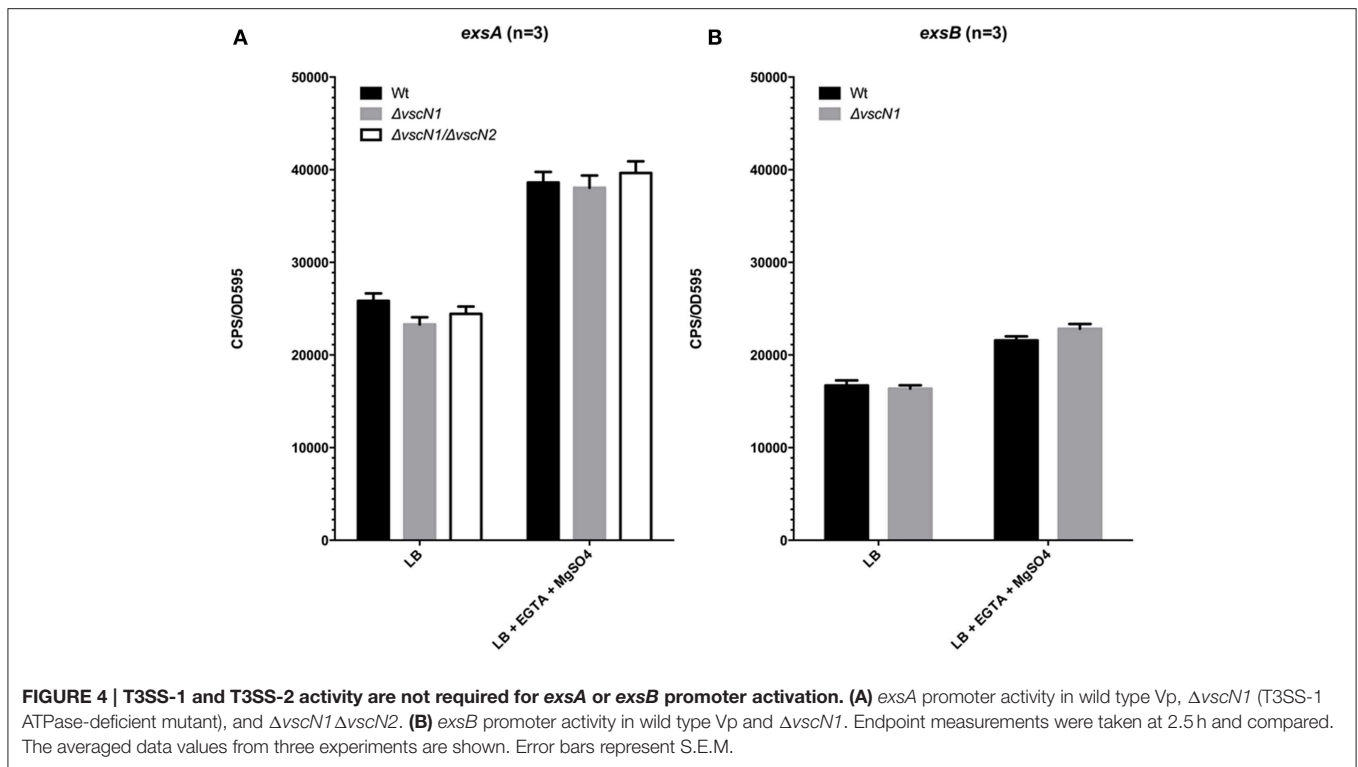
FIGURE 3 | Temporal promoter profiles for (A) *exsA* and (B) *exsB* were generated by diluting overnight cultures containing the reporter plasmids in LB medium (-) and LB supplemented with EGTA, MgSO₄ (+). Real time measurements were collected at 30 min intervals and normalized to OD595. The averaged data values from three experiments are shown. Error bars represent S.E.M. ** $p < 0.01$, **** $p < 0.0001$. Representative growth curves for each strain from a single experiment are shown below the relevant data set.

Furthermore, *exsB* promoter activity was unchanged in $\Delta vscN$ (Figure 4B). These data indicate that under the conditions tested, the absence of T3SS-1 or T3SS-2 activity does not significantly impact on *exsA* promoter activation. ExsB is thought to encode a T3SS-1 pilin and the data indicates that T3SS-1 activity does not impact on *exsB* promoter activity.

***exsA* Promoter Activity is Auto-activated**

A common feature of AraC family regulators is the ability to auto-activate gene expression. To investigate this possibility for Vp ExsA, we generated a plasmid encoded ExsA-FLAG expression

construct, with its transcription regulated by a *tac* promoter. This plasmid is expected to deliver ExsA overexpression without influences of feedback regulation or quorum sensing (due to the absence of the native *exsA* promoter). The ExsA-FLAG expression plasmid or empty control plasmid was transferred to Vp harboring *pexsA-lux* via conjugation. The resulting bacterial strains were then subjected to lux assays. ExsA overexpression did not impact *exsA* promoter activity when bacteria were grown in LB supplemented with magnesium +EGTA (data not shown). When bacteria overexpressing ExsA were grown in LB only, *exsA* promoter activity increased after 2.5 h compared to



bacteria expressing native levels of ExsA. The increase reached statistical significance after 3.5 h ($p = 0.015$) and continued to 4.5 h (Figure 5A). These data indicate that ExsA overexpression results in higher levels of *exsA* promoter activity. Furthermore, in conditions that typically support low levels of type III protein secretion (LB growth), ExsA overexpression was observed to upregulate *exsA* promoter activity. This result is in complete agreement with a previous observation showing increased T3SS-1 associated gene expression upon ExsA overexpression (see Discussion).

***exsD* Promoter Activity Is Higher in Conditions That Support Maximal *exsA* Gene Expression**

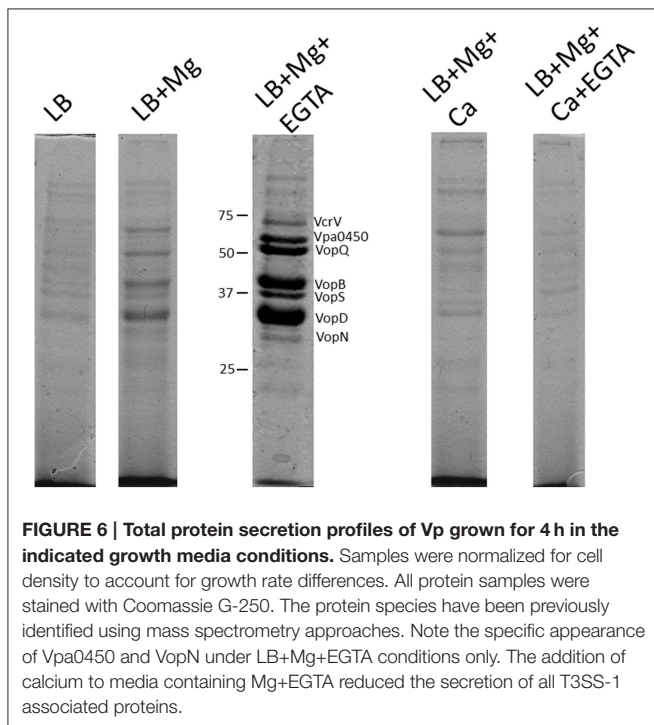
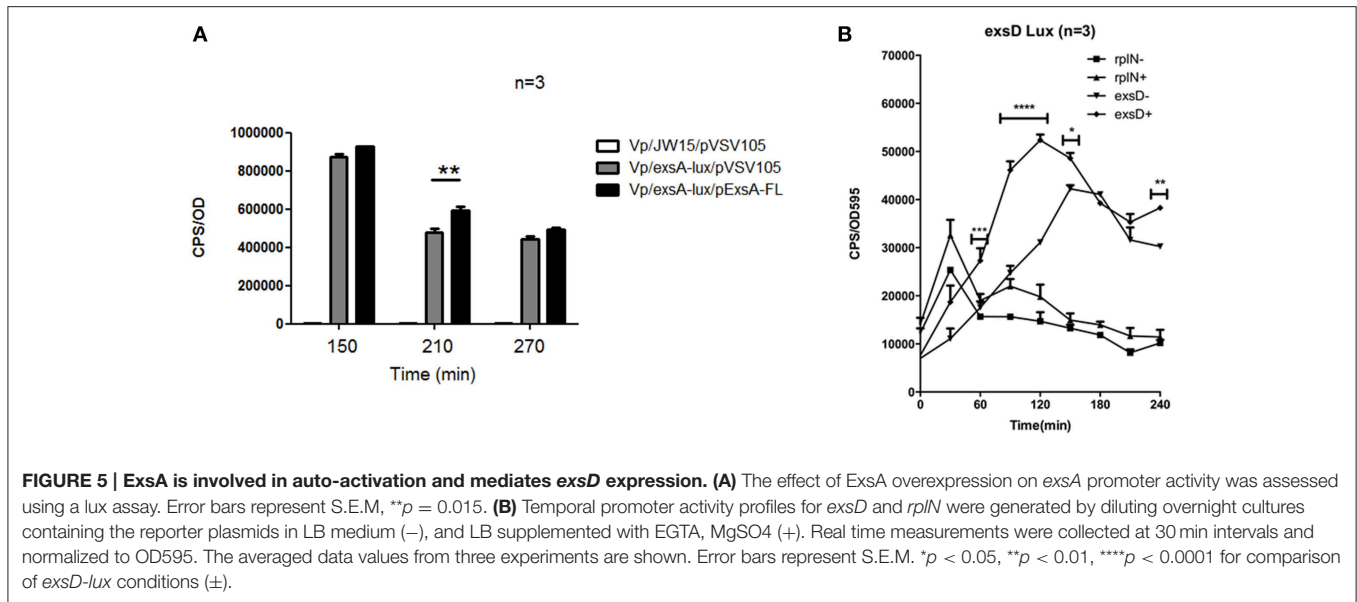
In Vp, ExsD binds to ExsA within the cell, thereby preventing ExsA binding to DNA (Zhou et al., 2010a). This regulatory paradigm is also observed in *P. aeruginosa*, where *exsACDE* are co-transcribed as a single operon. Hence, in *P. aeruginosa* the transcriptional activator ExsA is co-regulated with its own inhibitor. In Vp, the gene organization is different from *P. aeruginosa*. Specifically, *exsD* has its own promoter (Figure 1). Therefore, we set out to investigate whether the *exsD* promoter would show a similar activity profile to that of the *exsA* promoter. To address this we generated a *pexsD-lux* plasmid. We also generated a *prplN-lux* plasmid as a control since *rplN* is a ribosomal protein gene that is not expected to be regulated by ExsA. These plasmids were added to wild type Vp and the bacteria were subjected to lux assays. As shown in Figure 5B, *exsD* promoter activity reached a maximal level at 2 h. Importantly, this occurred in growth conditions that supported maximal *exsA* promoter activity (LB containing Mg+EGTA,

refer to Figure 2). When bacteria were grown in LB only, *exsD* promoter activity increased, although at a slower rate than when bacteria were grown in LB supplemented with Mg+EGTA. The *rplN* promoter showed an early sharp increase in activity irrespective of growth media (Figure 5B). This was expected since the bacteria had been introduced into fresh growth media and ribosomal protein gene expression would be required to support *de novo* protein synthesis. More importantly, *rplN* promoter activity showed a steady state temporal activity trend between 60 and 240 min which was different to the activity profile for the *exsD* promoter. These data reveal that *exsD* promoter activity correlates with that of *exsA*.

Growth of Vp in Media Supplemented with Magnesium, Calcium, or EGTA Produce Differential Secreted Protein Profiles

We previously reported growth conditions that support maximal levels of Vp translocator and effector secretion (Sarty et al., 2012). Based on the differential *exsA* promoter activation patterns in several distinct media (Figure 2), we reassessed the data and provide new observations. For these experiments, Vp was grown for 4 h and filtered culture supernatants were processed for SDS-PAGE and Coomassie staining (see Materials and Methods).

Vp was grown in LB media with different supplementations, similar to the lux based *exsA* promoter activation studies. It was noted that each media produced differential total secreted protein profiles (Figure 6). The addition of EGTA to LB reduced Vp growth rate (data not shown), probably as a result of cell envelope stress and hence the secreted protein profile was too complex to interpret. Vp grown in



LB had a complex secreted protein profile, however, the addition of magnesium to LB resulted in the appearance of 4 dominant protein species. Furthermore, growth of Vp in LB media containing magnesium and EGTA produced additional dominant secreted proteins (Figure 6). In contrast, growth of Vp in LB supplemented with (i) magnesium and calcium or (ii) magnesium, calcium and EGTA, did not yield abundant levels of these proteins.

The secreted proteins produced from Vp growth in LB+Mg+EGTA were previously subjected to mass spectrometry

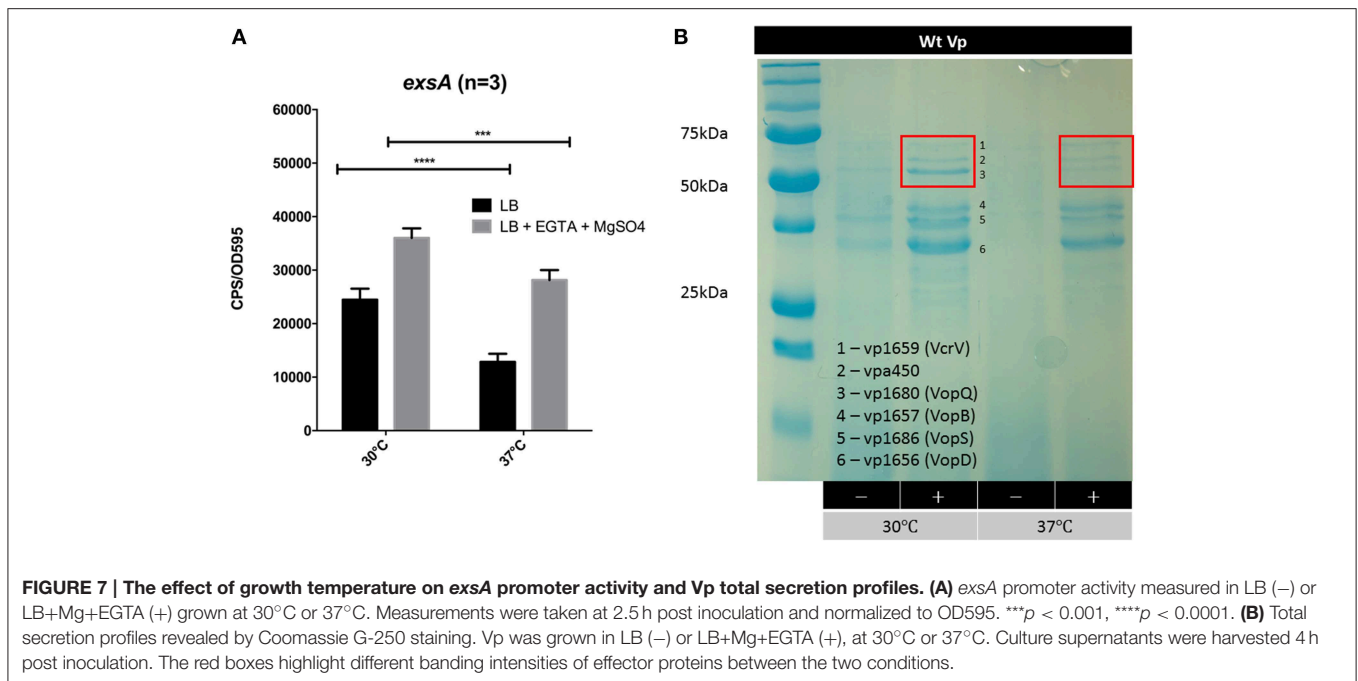
analyses and identified as type III translocators and effector proteins (Sarty et al., 2012). Notably, VopN and Vpa450 secretion were readily apparent in Vp cultures supplemented with Mg+EGTA yet not detectable from Vp cultures supplemented with magnesium (only) or any media supplemented with calcium (Figure 6). This observation appeared unique to VopN and Vpa450. These data indicate that defined growth conditions significantly impact the T3SS-1 associated secretion profile of Vp and that certain effectors are efficiently secreted under low calcium conditions.

Growth Temperature Impacts on *exsA* Promoter Activity and T3SS-1 Secretion Levels

Vp is commonly found in brackish estuarine waters that range in temperature from 15 to 30°C (Ceccarelli et al., 2014). However, during human infection, Vp encounters a body temperature of 37°C. We set out to assess *exsA* promoter activity at 30°C and 37°C. It was observed that *exsA* promoter activity was significantly higher at 30°C when compared to 37°C (Figure 7A). The culture supernatants from these samples were subjected to SDS-PAGE to assess total protein secretion under the different temperature conditions. Coomassie staining revealed that effector protein secretion was more abundant at 30°C than 37°C (Figure 7B). These data correlated with the elevated *exsA* promoter activity observed at 30°C.

Identification of an Expanded Putative Vp ExsA Binding Motif for 11 Genetic Loci

We noted that elevated Vpa0450 and VopN secretion levels exclusively correlated with growth conditions that supported elevated *exsA* gene expression (Figures 2, 3). This observation is in direct agreement with a RNA-seq study showing ExsA overexpression upregulated *vpa0450* and *vopN* gene expression (Nydham et al., 2014). Therefore, we sought to discover an



explanation that could link elevated Vpa0450 and VopN protein secretion to *exsA* expression.

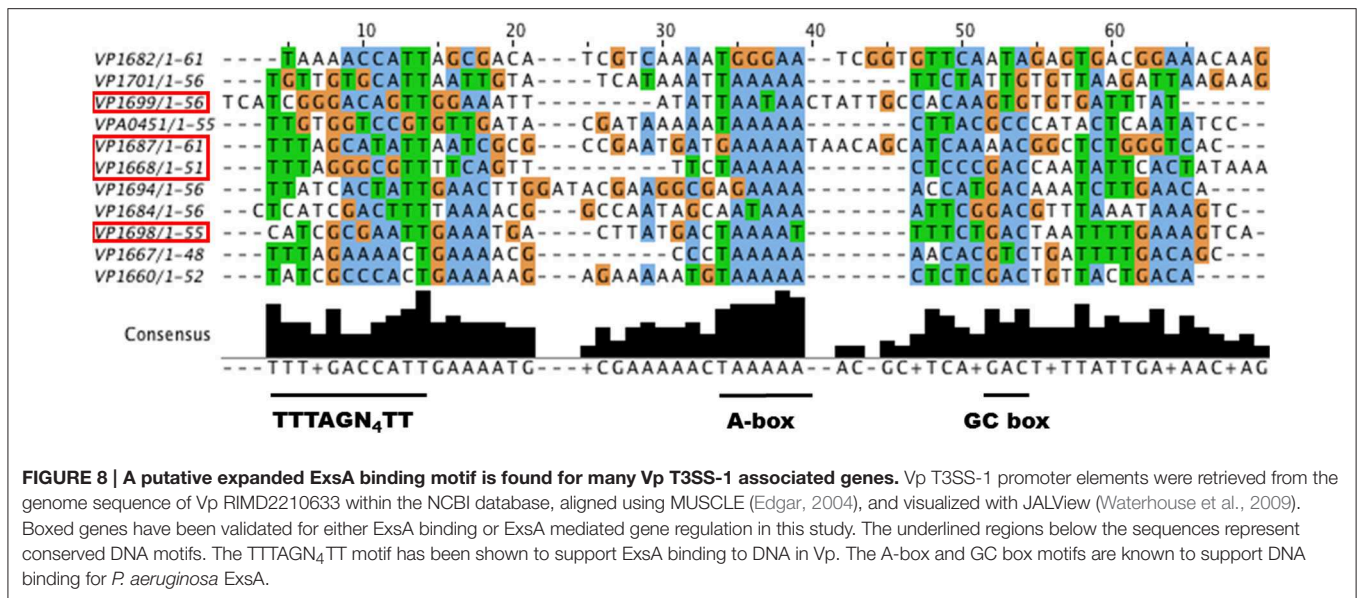
We hypothesized that ExsA could activate *vpa0450* and *vopN* gene expression by recognizing the respective promoter regions of these genes. For Vp, a previous study using two promoter DNA fragments identified an ExsA DNA binding motif (TTTAGN₄TT) (Zhou et al., 2008). This DNA binding motif is similar to one identified for VirF, an AraC-type regulator of *Yersinia* species (Wattiau and Cornelis, 1994). Notably, Vp *exsA* has been shown to complement a *P. aeruginosa* *exsA* mutant for transcriptional activation (King et al., 2013) and detailed mutagenesis studies have implicated an A-box and a separate G/C box motif in *P. aeruginosa* ExsA binding to DNA (King et al., 2012). Therefore, we predicted that the identified DNA motifs for both Vp and *P. aeruginosa* ExsA DNA binding would be present as a “hybrid” or expanded motif upstream of Vp *exsA*-dependent promoters. Sequence analysis of the DNA region upstream of *vopN* (*vp1667*) and *vpa0451* (a chaperone gene co-transcribed with *vpa0450*), revealed DNA sequences consistent with our prediction. Specifically, considerable identity to the binding motif (TTTAGN₄TT), along with an A-box and a G/C box (**Figure 8**).

Next, we considered that the observed increase in T3SS-1 associated proteins and effectors under LB+Mg+EGTA growth conditions (**Figure 6**) likely required increased expression of specific T3SS-1 apparatus genes, presumably achieved through ExsA. We evaluated all the annotated T3SS-1 genes and identified 11 putative expanded ExsA binding sites (**Figure 8**). Two of these are known to bind ExsA (*vp1668* and *vp1687*) and we provide evidence in this study that *exsA* (*vp1699*) and *exsD* (*vp1698*) are regulated by ExsA. Putative expanded ExsA binding sites are located upstream of chaperone and effector gene pairs (*vp1684-vp1683*, *vp1687-vp1686*, *vp1682-vp1680*).

Discussion

In this study, we profiled two distinct promoter elements that control *exsA* gene expression. Specific growth conditions produced differential *exsA* promoter activity. Maximal *exsA* gene expression correlated with elevated T3SS-1 protein secretion levels when Vp was grown in media supplemented with Mg+EGTA at 30°C. In contrast, *exsA* gene expression and T3SS-1 activity was minimal (baseline) when Vp was cultured in the presence of calcium. We identify that ExsA serves as an auto-activator, while at the same time positively regulates gene expression of *exsD*, an inhibitor of ExsA activity. Lastly, combining known features of DNA binding motifs from Vp ExsA, *P. aeruginosa* ExsA, and *Yersinia* VirF, fresh bioinformatic analyses identified a putative expanded Vp ExsA DNA binding motif linked to multiple T3SS-1 genetic operons. The findings indicate that Vp ExsA is a key entry level regulator of T3SS-1 gene expression and that multiple genetic and environmental factors contribute to *exsA* gene expression levels.

Genetic analyses have identified a transcriptional start site and putative promoter upstream of *exsA* (Sun et al., 2015). In *V. harveyi*, an *exsBA* co-transcript has been identified (Waters et al., 2010), which is somewhat surprising given the large *exsB-exsA* intergenic region [~600bp, also present in Vp (**Figure 1**)]. This prompted us to investigate whether *exsBA* are co-transcribed in Vp. Using RT-PCR, we detected a Vp *exsBA* transcript (**Figure 1**). This finding indicates that *exsA* gene expression can be initiated by two distinct promoter elements, similar to *V. harveyi*. Quantitative activity profiling of the distinct *exsB* and *exsA* promoters revealed differential temporal features and activity levels (**Figure 3**). Collectively, the promoter profiling data indicates that for the growth conditions tested, Vp can



initiate *exsBA* co-transcription followed by high level *exsA* gene expression from a proximal promoter.

A clear finding from this study is that high T3SS-1 secreted protein levels correlate with an increase in *exsA* promoter activity (Figures 6, 7). We had previously shown that growth media with calcium reduced Vp T3SS-1 activity and that Mg+EGTA growth media promoted T3SS-1 activity (Sarty et al., 2012), although the mechanisms behind those observations were not evident. Multiple growth conditions were used to profile light emission of an *exsA* promoter-lux fusion which indicated that when Vp is grown in the presence of calcium, *exsA* promoter activity (and by extension *exsA* gene expression) was at low baseline levels. In sharp contrast, Vp growth in Mg+EGTA significantly upregulated *exsA* promoter activity. Hence, growth conditions can impact *exsA* gene expression levels with consequences for T3SS-1 activity.

Temperature is known to have a regulating impact on gene expression and T3SS activity for many pathogens. In the case of Vp, it appears that *exsA* gene expression is elevated at 30°C compared to 37°C (Figure 7). This observation extends to protein secretion levels where translocon and effectors were relatively more abundant at 30°C. It is important to note that T3SS-1 associated proteins are expressed and secreted at 37°C, which agrees with various lines of evidence from cytotoxicity and infection assays (Park et al., 2004a; Broberg et al., 2010; Zhou et al., 2010b; Sarty et al., 2012). While T3SS-1 is required for full virulence in a small animal model of infection (Ritchie et al., 2012), its role in human diarrheal disease has yet to be confirmed. A recent transcriptomic screen of Vp during infection suggests that ExsA levels need to reach a threshold to mediate downstream events (Livny et al., 2014). Our data supports this view, particularly with respect to differential *exsA* promoter activation.

The data indicate that *in vitro* low calcium conditions are associated with elevated *exsA* promoter activation. This is similar

to many observations from different pathogens that express a T3SS, including *Yersinia*, *Pseudomonas*, and EPEC (DeBord et al., 2003; Deng et al., 2005; Dasgupta et al., 2006). However, we are cautious with our interpretations since the experiments used EGTA, which can chelate a variety of divalent cations with varying efficiency. The affinity of EGTA for calcium is known to be high, although other cations can be bound including Fe²⁺. We also note that the inclusion of calcium to Vp growth media containing magnesium and EGTA was sufficient to limit *exsA* promoter activity (Figure 2), although one cannot rule out the possibility that other chelated cations are freed up due to EGTA competitively binding calcium. For example, low soluble iron availability has been implicated in Vp T3SS induction (Gode-Potratz et al., 2010). Under certain *in vitro* conditions tested here, soluble iron cations may have come available when EGTA competitively bound to calcium, potentially limiting T3SS-1 activity. Therefore, it remains to be determined what exact environmental signals induce Vp T3SS-1, although low amounts of free divalent cations could be involved. During Vp infection of human cells, bacterial contact with target cells also is believed to have a role in T3SS-1 induction (Zhou et al., 2008), although the detailed mechanisms have not been elucidated to date.

A secretion hierarchy in T3SS occurs with translocator proteins being secreted ahead of effector proteins (Tomalka et al., 2012). Interestingly, different total secreted protein profiles were observed when Vp was cultured in specific growth media (Figure 6). The inclusion of Mg+EGTA to LB resulted in higher levels of effectors along with the specific appearance of VopN and Vpa450 effector proteins in secreted fractions. *exsA* promoter activity levels were significantly different for LB+Mg and LB+Mg+EGTA conditions especially at 3 h post inoculation (Figure 2). This prompted us to examine if ExsA could be involved in activating gene expression of *vopN* and *vpa450*. In both cases, we identified DNA sequences that strongly match an expanded Vp ExsA binding motif (containing

TTTAGN4TT, A-box, and G/C box motifs) located upstream of these genes (Figure 8). Furthermore, our bioinformatic analyses reveal putative expanded ExsA binding motifs upstream of 11 genetic loci associated with T3SS-1 operons. Two of these genetic loci have been shown to support ExsA binding, and we provide promoter activity data to implicate the *exsA* and *exsD* promoters as being regulated by ExsA (Figure 5).

The 11 identified genetic loci in Figure 8 are arranged in transcriptional operons and collectively encode 41 genes. This number of ExsA regulated genes is in agreement with a recent Vp RNA-Seq study (Nydam et al., 2014) and also closely resembles the 10 ExsA regulated operons within *P. aeruginosa* (Diaz et al., 2011). The expanded Vp ExsA binding motif identified here combines DNA elements that bring together data from various systems in *Yersinia* (VirF), *Pseudomonas* (ExsA) and Vp (ExsA) (Wattiau and Cornelis, 1994; Brutinel et al., 2008; Zhou et al., 2008). The fact that Vp *exsA* can complement a *P. aeruginosa exsA* mutant (King et al., 2013) further indicates common functionality at a DNA binding level. The binding of AraC/XylR/ExsA family members to DNA is complex, in some cases involving sequential steps. Therefore, we propose that further DNA binding assays and detailed mutagenesis investigations are required to experimentally validate and delineate the expanded Vp ExsA binding motif presented in Figure 8.

In summary, Vp was found to have two distinct mechanisms to initiate *exsA* expression. Growth media and temperature were found to impact on T3SS-1 activity, which was linked to *exsA*

expression levels. ExsA auto-activates its own expression, whereas its negative regulator ExsD is expressed under similar conditions. ExsA is therefore a central transcriptional activator that responds to environmental stimuli to regulate T3SS-1 associated genes. The results suggest that temporal ExsA cellular levels exhibit fine tuning regulatory roles resulting in differential T3SS-1 activity.

Acknowledgments

We thank all members of the Thomas laboratory for their comments toward the manuscript. Lauren Campbell provided support for some of the lux experiments. This work was funded by a grant awarded to NT. from the Natural Sciences and Engineering Research Council of Canada (NSERC) (RGPIN/342111-2013). The Canadian Foundation for Innovation (CFI) provided infrastructure support in a CFI-LOF grant to NT.

Supplementary Material

The Supplementary Material for this article can be found online at: <http://journal.frontiersin.org/article/10.3389/fmicb.2015.01089>

Figure S1 | (A) *exsA* promoter activity profiles within $\Delta vscN$ grown in LB (–) or LB+Mg+EGTA (+). **(B)** *exsB* promoter activities for various growth media conditions. Samples were measured at 2.5 h post inoculation. A representative data set is shown.

References

- Banerjee, S., Petronella, N., Chew Leung, C., and Farber, J. (2015). Draft Genome Sequences of Four *Vibrio parahaemolyticus* Isolates from Clinical Cases in Canada. *Genome Announc* 3:e01482-14. doi: 10.1128/genomeA.01482-14
- Broberg, C. A., Zhang, L., Gonzalez, H., Laskowski-Arce, M. A., and Orth, K. (2010). A Vibrio effector protein is an inositol phosphatase and disrupts host cell membrane integrity. *Science* 329, 1660–1662. doi: 10.1126/science.1192850
- Brouwers, E., Ma, I., and Thomas, N. A. (2012). Dual temporal transcription activation mechanisms control *cesT* expression in enteropathogenic *Escherichia coli*. *Microbiology* 158(Pt 9), 2246–2261. doi: 10.1099/mic.0.059444-0
- Brutinel, E. D., Vakulskas, C. A., Brady, K. M., and Yahr, T. L. (2008). Characterization of ExsA and of ExsA-dependent promoters required for expression of the *Pseudomonas aeruginosa* type III secretion system. *Mol. Microbiol.* 68, 657–671. doi: 10.1111/j.1365-2958.2008.06179.x
- Brutinel, E. D., Vakulskas, C. A., and Yahr, T. L. (2009). Functional domains of ExsA, the transcriptional activator of the *Pseudomonas aeruginosa* type III secretion system. *J. Bacteriol.* 191, 3811–3821. doi: 10.1128/JB.00002-09
- Ceccarelli, D., Hasan, N. A., Huq, A., and Colwell, R. R. (2014). Distribution and dynamics of epidemic and pandemic *Vibrio parahaemolyticus* virulence factors. *Front. Cell. Infect. Microbiol.* 3:97. doi: 10.3389/fcimb.2013.00097
- Dasgupta, N., Ashare, A., Hunninghake, G. W., and Yahr, T. L. (2006). Transcriptional induction of the *Pseudomonas aeruginosa* type III secretion system by low Ca²⁺ and host cell contact proceeds through two distinct signaling pathways. *Infect. Immun.* 74, 3334–3341. doi: 10.1128/IAI.00090-06
- DeBord, K. L., Galanopoulos, N. S., and Schneewind, O. (2003). The *ttsA* gene is required for low-calcium-induced type III secretion of Yop proteins and virulence of *Yersinia enterocolitica* W22703. *J. Bacteriol.* 185, 3499–3507. doi: 10.1128/JB.185.12.3499-3507.2003
- Deng, W., Li, Y., Hardwidge, P. R., Frey, E. A., Pfuetschner, R. A., Lee, S., et al. (2005). Regulation of type III secretion hierarchy of translocators and effectors in attaching and effacing bacterial pathogens. *Infect. Immun.* 73, 2135–2146. doi: 10.1128/IAI.73.4.2135-2146.2005
- Diaz, M. R., King, J. M., and Yahr, T. L. (2011). Intrinsic and extrinsic regulation of type III secretion gene expression in *Pseudomonas aeruginosa*. *Front. Microbiol.* 2:89 doi: 10.3389/fmicb.2011.00089
- Edgar, R. C. (2004). MUSCLE: multiple sequence alignment with high accuracy and high throughput. *Nucleic Acids Res.* 32, 1792–1797. doi: 10.1093/nar/gkh340
- Fields, K. A., Plano, G. V., and Straley, S. C. (1994). A low-Ca²⁺ response (LCR) secretion (*ysc*) locus lies within the *lcrB* region of the LCR plasmid in *Yersinia pestis*. *J. Bacteriol.* 176, 569–579.
- Gode-Potratz, C. J., Chodur, D. M., and McCarter, L. L. (2010). Calcium and iron regulate swarming and type III secretion in *Vibrio parahaemolyticus*. *J. Bacteriol.* 192, 6025–6038. doi: 10.1128/JB.00654-10
- Henke, J. M., and Bassler, B. L. (2004). Quorum sensing regulates type III secretion in *Vibrio harveyi* and *Vibrio parahaemolyticus*. *J. Bacteriol.* 186, 3794–3805. doi: 10.1128/JB.186.12.3794-3805.2004
- King, J. M., Brutinel, E. D., Marsden, A. E., Schubot, F. D., and Yahr, T. L. (2012). Orientation of *Pseudomonas aeruginosa* ExsA monomers bound to promoter DNA and base-specific contacts with the P(exoT) promoter. *J. Bacteriol.* 194, 2573–2585. doi: 10.1128/JB.00107-12
- King, J. M., Schesser Bartra, S., Plano, G., and Yahr, T. L. (2013). ExsA and LcrF recognize similar consensus binding sites, but differences in their oligomeric state influence interactions with promoter DNA. *J. Bacteriol.* 195, 5639–5650. doi: 10.1128/JB.00990-13
- Kodama, T., Gotoh, K., Hiyoshi, H., Morita, M., Izutsu, K., Akeda, Y., et al. (2010a). Two regulators of *Vibrio parahaemolyticus* play important roles in enterotoxicity by controlling the expression of genes in the Vp-PAI region. *PLoS ONE* 5:e8678. doi: 10.1371/journal.pone.0008678

- Kodama, T., Yamazaki, C., Park, K. S., Akeda, Y., Iida, T., and Honda, T. (2010b). Transcription of *Vibrio parahaemolyticus* T3SS1 genes is regulated by a dual regulation system consisting of the ExsACDE regulatory cascade and H-NS. *FEMS Microbiol. Lett.* 311, 10–17. doi: 10.1111/j.1574-6968.2010.02066.x
- Laemmli, U. K. (1970). Cleavage of structural proteins during the assembly of the head of bacteriophage T4. *Nature* 227, 680–685. doi: 10.1038/227680a0
- Livny, J., Zhou, X., Mandlik, A., Hubbard, T., Davis, B. M., and Waldor, M. K. (2014). Comparative RNA-Seq based dissection of the regulatory networks and environmental stimuli underlying *Vibrio parahaemolyticus* gene expression during infection. *Nucleic Acids Res.* 42, 12212–12223. doi: 10.1093/nar/gku891
- Macritchie, D. M., Ward, J. D., Nevesinjac, A. Z., and Raivio, T. L. (2008). Activation of the Cpx envelope stress response down-regulates expression of several locus of enterocyte effacement-encoded genes in enteropathogenic *Escherichia coli*. *Infect. Immun.* 76, 1465–1475. doi: 10.1128/IAI.01265-07
- Makino, K., Oshima, K., Kurokawa, K., Yokoyama, K., Uda, T., Tagomori, K., et al. (2003). Genome sequence of *Vibrio parahaemolyticus*: a pathogenic mechanism distinct from that of *V. cholerae*. *Lancet* 361, 743–749. doi: 10.1016/S0140-6736(03)12659-1
- Meighen, E. A. (1993). Bacterial bioluminescence: organization, regulation, and application of the lux genes. *FASEB J.* 7, 1016–1022.
- Nydam, S. D., Shah, D. H., and Call, D. R. (2014). Transcriptome analysis of *Vibrio parahaemolyticus* in type III secretion system 1 inducing conditions. *Front. Cell. Infect. Microbiol.* 4:1. doi: 10.3389/fcimb.2014.00001
- Ono, T., Park, K. S., Ueta, M., Iida, T., and Honda, T. (2006). Identification of proteins secreted via *Vibrio parahaemolyticus* type III secretion system 1. *Infect. Immun.* 74, 1032–1042. doi: 10.1128/IAI.74.2.1032-1042.2006
- Park, K. S., Ono, T., Rokuda, M., Jang, M. H., Iida, T., and Honda, T. (2004a). Cytotoxicity and enterotoxicity of the thermostable direct hemolysin-deletion mutants of *Vibrio parahaemolyticus*. *Microbiol. Immunol.* 48, 313–318. doi: 10.1111/j.1348-0421.2004.tb03512.x
- Park, K. S., Ono, T., Rokuda, M., Jang, M. H., Okada, K., Iida, T., et al. (2004b). Functional characterization of two type III secretion systems of *Vibrio parahaemolyticus*. *Infect. Immun.* 72, 6659–6665. doi: 10.1128/IAI.72.11.6659-6665.2004
- Ritchie, J. M., Rui, H., Zhou, X., Iida, T., Kodoma, T., Ito, S., et al. (2012). Inflammation and disintegration of intestinal villi in an experimental model for *Vibrio parahaemolyticus*-induced diarrhea. *PLoS Pathog* 8:e1002593. doi: 10.1371/journal.ppat.1002593
- Sarty, D., Baker, N. T., Thomson, E. L., Rafuse, C., Ebanks, R. O., Graham, L. L., et al. (2012). Characterization of the type III secretion associated low calcium response genes of *Vibrio parahaemolyticus* RIMD2210633. *Can. J. Microbiol.* 58, 1306–1315. doi: 10.1139/w2012-109
- Sun, F., Zhang, Y., Qiu, Y., Yang, H., Yang, W., Yin, Z., et al. (2015). H-NS is a repressor of major virulence gene loci in *Vibrio parahaemolyticus*. *Front. Microbiol.* 5:675. doi: 10.3389/fmicb.2014.00675
- Thomas, N. A., Deng, W., Puente, J. L., Frey, E. A., Yip, C. K., Strynadka, N. C., et al. (2005). CesT is a multi-effector chaperone and recruitment factor required for the efficient type III secretion of both LEE- and non-LEE-encoded effectors of enteropathogenic *Escherichia coli*. *Mol. Microbiol.* 57, 1762–1779. doi: 10.1111/j.1365-2958.2005.04802.x
- Tomalka, A. G., Stopford, C. M., Lee, P. C., and Rietsch, A. (2012). A translocator-specific export signal establishes the translocator-effector secretion hierarchy that is important for type III secretion system function. *Mol. Microbiol.* 86, 1464–1481. doi: 10.1111/mmi.12069
- Velazquez-Roman, J., León-Sicairos, N., de Jesus Hernandez-Diaz, L., and Canizalez-Roman, A. (2014). Pandemic *Vibrio parahaemolyticus* O3:K6 on the American continent. *Front. Cell. Infect. Microbiol.* 3:110. doi: 10.3389/fcimb.2013.00110
- Waterhouse, A. M., Procter, J. B., Martin, D. M., Clamp, M., and Barton, G. J. (2009). Jalview Version 2—a multiple sequence alignment editor and analysis workbench. *Bioinformatics* 25, 1189–1191. doi: 10.1093/bioinformatics/btp033
- Waters, C. M., Wu, J. T., Ramsey, M. E., Harris, R. C., and Bassler, B. L. (2010). Control of the type 3 secretion system in *Vibrio harveyi* by quorum sensing through repression of ExsA. *Appl. Environ. Microbiol.* 76, 4996–5004. doi: 10.1128/AEM.00886-10
- Wattiau, P., and Cornelis, G. R. (1994). Identification of DNA sequences recognized by VirF, the transcriptional activator of the *Yersinia yop* regulon. *J. Bacteriol.* 176, 3878–3884.
- Zhou, X., Konkel, M. E., and Call, D. R. (2010a). Regulation of type III secretion system 1 gene expression in *Vibrio parahaemolyticus* is dependent on interactions between ExsA, ExsC, and ExsD. *Virulence* 1, 260–272. doi: 10.3389/fcimb.2013.00110
- Zhou, X., Konkel, M. E., and Call, D. R. (2010b). Vp1659 is a *Vibrio parahaemolyticus* type III secretion system 1 protein that contributes to translocation of effector proteins needed to induce cytolysis, autophagy, and disruption of actin structure in HeLa cells. *J. Bacteriol.* 192, 3491–3502. doi: 10.1128/JB.01493-09
- Zhou, X., Shah, D. H., Konkel, M. E., and Call, D. R. (2008). Type III secretion system 1 genes in *Vibrio parahaemolyticus* are positively regulated by ExsA and negatively regulated by ExsD. *Mol. Microbiol.* 69, 747–764. doi: 10.1111/j.1365-2958.2008.06326.x

Conflict of Interest Statement: The authors declare that the research was conducted in the absence of any commercial or financial relationships that could be construed as a potential conflict of interest.

Copyright © 2015 Liu and Thomas. This is an open-access article distributed under the terms of the Creative Commons Attribution License (CC BY). The use, distribution or reproduction in other forums is permitted, provided the original author(s) or licensor are credited and that the original publication in this journal is cited, in accordance with accepted academic practice. No use, distribution or reproduction is permitted which does not comply with these terms.