



OPEN ACCESS

EDITED BY
Itu Singh,
The Leprosy Mission Trust India, India

REVIEWED BY
Niaina Rakotosamimanana,
Institut Pasteur de Madagascar,
Madagascar
Anthony Enimil,
Kwame Nkrumah University of Science
and Technology, Ghana

*CORRESPONDENCE
Bariki Mtafya
bmtafya@nimr-mmrc.org

†These authors have contributed
equally to this work

SPECIALTY SECTION
This article was submitted to
Infectious Diseases – Surveillance,
Prevention and Treatment,
a section of the journal
Frontiers in Medicine

RECEIVED 12 July 2022
ACCEPTED 28 September 2022
PUBLISHED 28 October 2022

CITATION
Mtafya B, Sabi I, John J, Sichone E,
Olomi W, Gillespie SH, Ntinginya NE
and Sabiiti W (2022) Systematic
assessment of clinical
and bacteriological markers
for tuberculosis reveals discordance
and inaccuracy of symptom-based
diagnosis for treatment response
monitoring.
Front. Med. 9:992451.
doi: 10.3389/fmed.2022.992451

COPYRIGHT
© 2022 Mtafya, Sabi, John, Sichone,
Olomi, Gillespie, Ntinginya and Sabiiti.
This is an open-access article
distributed under the terms of the
[Creative Commons Attribution License
\(CC BY\)](https://creativecommons.org/licenses/by/4.0/). The use, distribution or
reproduction in other forums is
permitted, provided the original
author(s) and the copyright owner(s)
are credited and that the original
publication in this journal is cited, in
accordance with accepted academic
practice. No use, distribution or
reproduction is permitted which does
not comply with these terms.

Systematic assessment of clinical and bacteriological markers for tuberculosis reveals discordance and inaccuracy of symptom-based diagnosis for treatment response monitoring

Bariki Mtafya^{1,2*}, Issa Sabi¹, Joseph John¹, Emanuel Sichone¹, Wilyhelmina Olomi¹, Stephen H. Gillespie², Nyanda E. Ntinginya^{1†} and Wilber Sabiiti^{2†}

¹National Institute for Medical Research, Mbeya Medical Research Centre, Mbeya, Tanzania, ²School of Medicine, University of St Andrews, St Andrews, United Kingdom

Background: Clinical symptoms are the benchmark of tuberculosis (TB) diagnosis and monitoring of treatment response but are not clear how they relate to TB bacteriology, particularly the novel tuberculosis-molecular bacterial load assay (TB-MBLA).

Methods: Presumptive cases were bacteriologically confirmed for TB and assessed for symptoms and bacteriological resolution using smear microscopy (SM), culture, and TB-MBLA over 6-month treatment course. Kaplan–Meier and Kappa statistics were used to test the relationship between symptoms and bacteriological positivity.

Results: A cohort of 46 bacteriologically confirmed TB cases were analyzed for treatment response over a 6-month treatment course. Pre-treatment symptoms and bacteriological positivity concurred in over 70% of the cases. This agreement was lost in over 50% of cases whose chest pain, night sweat, and loss of appetite had resolved by week 2 of treatment. Cough resolved at a 3.2% rate weekly and was 0.3% slower than the combined bacteriological (average of MGIT and TB-MBLA positivity) resolution rate, 3.5% per week. A decrease in TB-MBLA positivity reflected a fall in bacillary load, 5.7 ± 1.3 - at baseline to 0.30 ± 1.0 - \log_{10} eCFU/ml at month 6, and closer to cough resolution than other bacteriological measures, accounting for the only one bacteriologically positive case out of seven still coughing at month 6. Low baseline bacillary load patients were more likely to be bacteriologically negative, HR 5.6, $p = 0.003$ and HR 3.2, $p = 0.014$ by months 2 and 6 of treatment, respectively.

Conclusion: The probability of clinical symptoms reflecting bacteriological positivity weakens as the patient progresses on anti-TB therapy, making the symptom-based diagnosis a less reliable marker of treatment response.

KEYWORDS

TB-MBLA, diagnosis, monitoring, TB symptoms, bacteriological tests

Introduction

Tuberculosis (TB) is the leading cause of death attributed to a single microbial pathogen worldwide, ranking above HIV/AIDS until the recent coronavirus pandemic (1). In 2020, around 10 million people developed TB disease and 1.4 million died (2). The current 6-months TB treatment with Isoniazid (H), Rifampicin (R), Pyrazinamide (P), and Ethambutol (E) regimens is effective in healthcare settings but can be hampered by low adherence and long treatment duration that can be challenging to finish (3–5). Accurate and rapid tests are required to help clinicians to identify patients at risk of treatment failure including those who may require an extended treatment or treatment change (6). The availability of such tools would reduce treatment costs and expedite the evaluation of new TB medicines (7).

Currently, diagnosis and treatment monitoring relies on the initial assessment of TB symptoms followed by bacteriological confirmation in clinical specimens (8, 9). Presence of TB symptoms such as cough, fever, night sweats, hemoptysis, sputum production, and weight loss are associated with active TB disease (9, 10). Despite the technical difficulties to screen TB symptoms and its low sensitivity and specificity (11), a combination of three symptoms (cough, fever, and sweats) demonstrated a 93% sensitivity and 36% specificity for active TB in people living with Human Immune Deficiency Virus (PLHIV) (12). Previous clinical trials showed the association of cough, fever, and night sweats with TB bacillary burden at diagnosis and relapse (13, 14). Thus, careful assessment of TB symptoms may be an alternative diagnostic and monitoring tool in healthcare settings with limited capacity to perform bacteriological tests.

Bacteriological tests are the reference standard for the diagnosis of active TB and monitoring. Tests detecting DNA of *Mycobacterium tuberculosis* (*M.tb*) such as the Xpert MTB/RIF Assay are rapid and sensitive for diagnosis but are not useful for monitoring (15) as DNA can be detected from both live and dead cells (16, 17). Reliance on standard smear microscopy (SM) and culture methods have many limitations for monitoring (18–22). Sputum smear is cheap and easy to perform but has low sensitivity and specificity (23, 24). Therefore, in the absence of the WHO-recommended tools, many clinicians use clinical

symptoms as the means for monitoring treatment response (24, 25).

Tuberculosis-molecular bacterial load assay (TB-MBLA) is a promising test for treatment response monitoring. It quantifies 16S rRNA of *M.tb* by reverse transcriptase polymerase chain reaction as the marker viable *M.tb* (26–28). Early studies have consistently retrieved *M.tb* 16S rRNA in patient samples reflecting viable bacilli during treatment with a strong correlation with standard MGIT culture (29–32). In this study, we prospectively assessed clinical measures of patient improvement compared to standard-of-care bacteriological tests and with the novel TB-MBLA before and throughout 6 months of standard TB therapy.

Materials and methods

Ethics

The study was approved by the Mbeya Medical Research and Ethics Committee (MRH/R.10/18VOLL.VII/12) and the University of St Andrews Teaching and Research Ethics Committee (MD12678). National approval was obtained from the National Institute for Medical Research (NIMR/HQ/R.8a/Vol.IX/2400) in Tanzania. All participants provided written consent or witnessed verbal consent for those who could not write or read.

Study design

This was a longitudinal prospective study assessing the relationship of TB symptoms with bacteriological measures before and during standard 6 months of TB therapy in routine healthcare settings.

Study sites

The study was conducted in Mbeya, Tanzania from January 2017 to March 2018. Patients were enrolled from

the Mbeya Zonal Referral Hospital (MZRH), Mbeya Regional Referral Hospital (MRRH), and Mbeya Rural District Hospital (MRDH). Mbeya is a high TB burden border region and major transport gateway to Malawi, Zambia, and the Democratic Republic of Congo.

Patient recruitment and selection criteria

Patients with presumed symptoms of pulmonary TB (PTB) and those who had at least one of the following symptoms; cough, night sweats, chest pain, loss of appetite, and weight loss aged between 18 and 65 years were selected to provide sputum specimens for initial diagnosis with Xpert MTB/RIF Assay or sputum SM at the health facility. Xpert MTB/RIF Assay positive who tested negative to RIF resistance were given permission to participate in the study, which included providing follow-up samples for the bacteriological assessment of treatment response. Patients who were severely ill, unable to produce sputum, and those who were more than 50 km from a health facility, making it difficult for them to attend all follow-up visits, were excluded from the study.

Bacteriological confirmation

Prior to the initiation of standard TB therapy based on diagnostic results at the health facility, all consented patients provided a second pre-treatment sputum sample for bacteriological confirmation at NIMR-Mbeya Medical Research Centre (NIMR-MMRC) using sputum SM and Xpert MTB/RIF Assay, Culture and novel TB-MBLA. Patients who were bacteriologically negative or with the discordant confirmatory result at NIMR-MMRC including those who were treated based on the clinician's judgment were excluded in the study (Figure 1). All patients received standard TB therapy consisting of H-Z-R-E for 2 months followed by 4 months with H-R.

Treatment response monitoring and study outcomes

Participants were monitored for symptom and bacteriological positivity at weeks 2, 8, 22, and 26 of standard TB therapy. TB symptoms such as cough, chest pain, sputum production, loss of appetite, and night sweats were assessed at diagnosis, and all treatment follow-up visits by a clinician or a TB and leprosy coordinator at the healthcare facility prior to the collection of sputum specimens for bacteriological tests. Bacteriological response during treatment was measured using standard ZN microscopy, culture, and the novel TB-MBLA.

The study outcomes were the resolution of TB clinical symptoms and bacteriological conversion from positive to

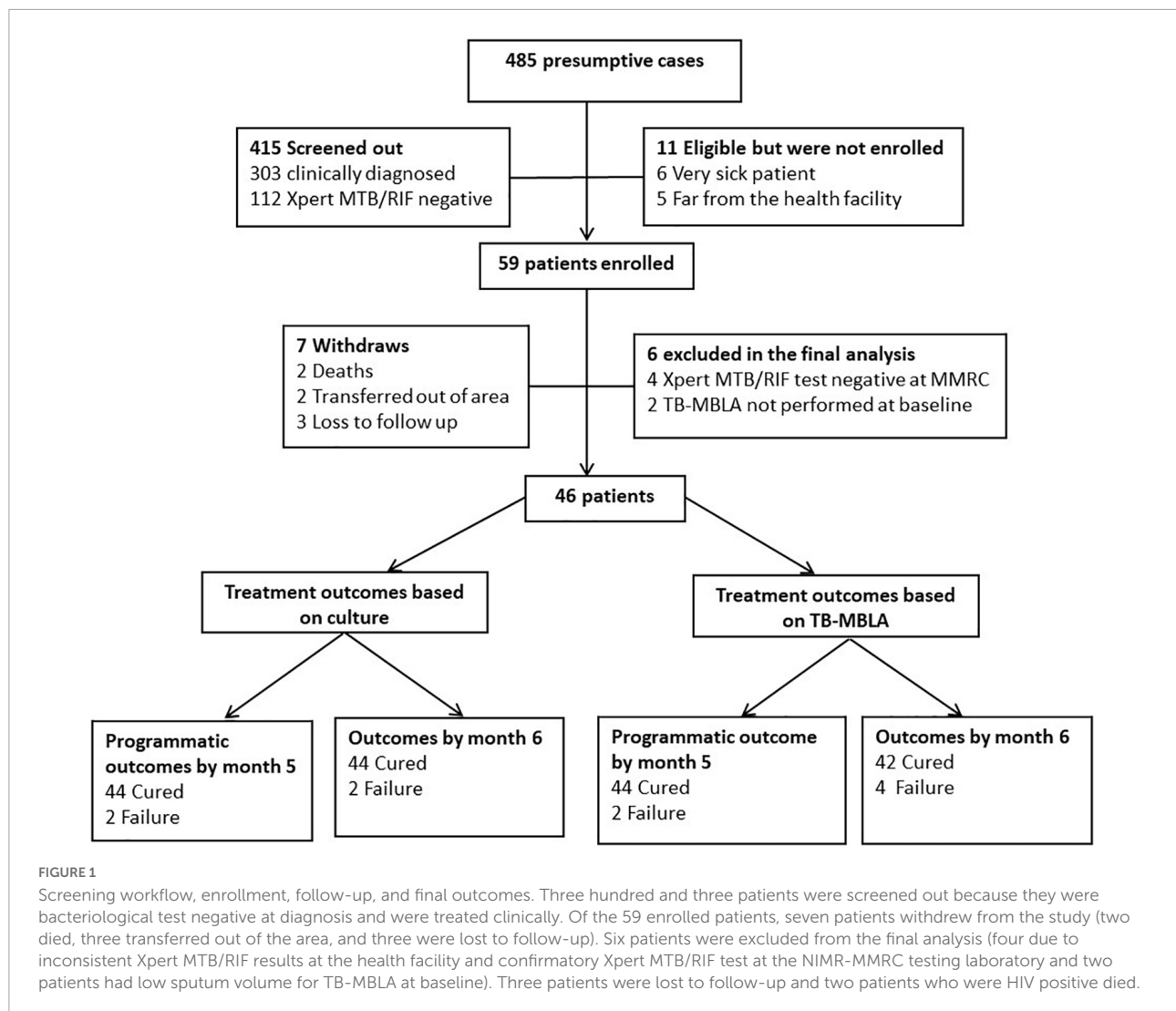
negative to inform the treatment continuation phase at week 8 and to establish final outcomes at the end of treatment weeks 22 and 26. Assessment of the final study outcomes was performed using standard SM, culture and results compared to the novel TB-MBLA. TB cured patients were defined as PTB patients with bacteriologically confirmed at diagnosis who converted to smear or culture negative in the last month of treatment and on at least one previous occasion (33).

Bacteriological tests

Sputum samples were homogenized using a sterile magnetic stirrer for 30 min and 1 ml of aliquot was mixed with 4 ml of guanidine thiocyanate (GTC) and used for TB-MBLA. Total RNA extraction for TB-MBLA was performed using the FastRNA Pro Kit (MP Biomedicals) and removal of genomic DNA was done using Turbo DNA free kit (Ambion). Reverse transcriptase-quantitative polymerase chain reactions (RT-qPCR) were performed on the Rotor-Gene Q machine (Qiagen) using the QuantiTect PCR NoROX mix (Qiagen) and TaqMan dual labeled probes (Eurofins Genomics). Using a pre-developed standard curve, the RT-PCR quantification cycle (Cq) values were converted to bacterial load (BL) and reported as estimated colony-forming units per/ml of sputum (eCFU/ml) as previously described (27, 34). The standard curve was developed using RNA extracted from mycobacterial cells with known colony-forming units per ml (CFU/ml).

A total of more than 2 ml of sputum was decontaminated with 1% of *N*-acetyl-L-cysteine combined with 2% of sodium hydroxide for 20 min. Concentrated sputum pellets were used for ZN microscopy, MGIT liquid culture (mycobacterial growth indicator tubes), and solid culture (LJ) (Beckton and Dickson Company, MD, USA) following the manufacturer's instructions. The growth of *M.tb* in culture was confirmed by ZN stain, lateral flow antigen test (MPT64, Beckton and Dickson Company, MD, USA), and blood agar plate (BAP) to confirm the purity of culture (35). Antimicrobial drug susceptibility tests for standard regimens (H-Z-R-E) were performed in the BACTEC MGIT 960 System following manufacturer instructions (36).

Treatment outcome was assessed at weeks 22 and 26 of treatment using the culture as the gold standard compared to TB-MBLA positivity at this stage of treatment. To assess the effect of baseline BL on the resolution of TB symptoms during treatment, we computed the median BL at baseline and stratified the patients into "High BL" for those with BL greater than the median value and "Low BL" for those with BL below the median value. Additionally, we stratified patients based on HIV status to determine if HIV has an impact on the resolution of TB symptoms. The average percent positivity of the most sensitive bacteriological tests, MGIT culture, and TB-MBLA were used to calculate the bacteriological positivity score.



Statistical analyses

Data were analyzed using STATA software (version 14) and GraphPad Prism version 9.3.1 (GraphPad Software, La Jolla, CA, USA). Multivariate hazard ratio was used to estimate the association between baseline BL and time to the resolution of TB symptoms from the start of TB therapy. Cox proportion hazard ratio was used to determine the association between the median time to the resolution of TB symptoms stratified by baseline BL or HIV status. Fischer exact test was used to assess the association of TB symptoms with bacteriological tests at week 8, exploring whether TB symptoms may be used to inform treatment continuation phase as for standard culture and SM. Kaplan–Meier curves were used to calculate the probability of TB bacillary load clearance at weeks 8 and 26 of treatment and Kappa statistics to assess percentage agreement between TB symptoms and bacteriological tests. All statistical analyses were considered significant at a *p*-value of less than 0.05.

Results

Patients' characteristics

Figure 1 depicts the flow of screened patients, enrollment, and follow-up. Of the 485 presumptive patients screened, 59 (12.8%) were enrolled in the study and 13 (22.03%) were excluded from the analysis because they either did not complete follow-up or their initial Xpert MTB/RIF Assay result at the health facility was discordant with the second confirmatory MTB/RIF Assay test performed NIMR-MMRC. As a result, 46 patients with a total of 230 serial samples collected longitudinally during the 6 months of standard treatment period were analyzed. Median age (range) was 37 years (18–65), 60.9% (28/46) were male subjects, 39.1% (18/46) were HIV positive, and 13% (6/46) were re-treatment cases (**Table 1**). Using the WHO definition of cure, 4.3% (2/46) each at months 5 and 6 were MGIT culture positive and considered as treatment failure.

TB-MBLA concurred with MGIT at month 5 detecting 4.3% (2/46) patients but two more at month 6, 8.6% (4/46). All 46 (100%) patients were phenotypically susceptible to the first-line H-Z-R-E regimen determined by the BD BACTEC MGIT 960 Culture Systems.

Resolution of tuberculosis symptoms compared to bacteriological tests positivity throughout treatment

The overall patients with detectable TB symptoms at diagnosis were 97.8, 80.4, 86.9, 76, and 100% for cough, chest pain, sweats, loss of appetite, and sputum production, respectively, and matched with bacteriological positivity of 84.8, 84.7, 93.5, and 100% by SM, LJ culture, MGIT culture, and TB-MBLA, respectively. The proportion of patients with three clinical symptoms, such as night sweats, loss of appetite, and chest pain declined sharply to 9.1, 6.8, and 30.8%, respectively, by week 8 of treatment compared to bacteriological test positivity of 8.6, 17.4, 28.3, and 60.9% by sputum SM, LJ culture, MGIT culture, and TB-MBLA, respectively. No patients reported sweats at week 26 of treatment and only 13.3 and 4.4% had chest pain and loss of appetite, respectively. In contrast, cough resolution was slower than both MGIT culture and TB-MBLA (Figure 2) or average bacteriological positivity throughout treatment (Figure 3), except at week 8 with 50%

positivity cough compared to 60.9% of TB-MBLA. Similar to cough, sputum production resolved more slowly than all bacteriological tests except TB-MBLA clearance at weeks 2 and 8 with a positivity of 89.1 and 60.9% compared to 82.6 and 56.8% for sputum production, respectively. A total of seven (15.2%) and 10 patients (21.7%) were coughing and producing sputum at week 26 of treatment, respectively, compared to four (8.6%) patients with TB-MBLA and two (4.3%) patients with MGIT positive. Only two out of the seven coughing patients at week 26 were among the six patients who were treatment failures.

Agreements between clinical symptoms and bacteriological measures

At the time of diagnosis, there was more than 70% agreement between TB-MBLA, other bacteriological measures, and clinical symptoms. Cough, loss of appetite, and sputum production were 100% in agreement with TB-MBLA. Apart from cough and sputum production that was over 70% in agreement with TB-MBLA by week 2 of treatment, chest pain, sweats, and loss of appetite had significantly resolved, which increased discordance with TB-MBLA by over 60% (Table 2). Resolution of cough was consistent with bacteriological positivity score with a SLOPE of -3.2 and -3.5 , respectively, per week. The lowest agreement of TB-MBLA with clinical symptoms and other bacteriological tests was at week 8 between 32–44 and 45–59%, respectively, and increased to 71–87 and 82–89%, respectively, by the end of treatment week 26 (Table 2). Bacteriological positivity was not associated with the presence of TB symptoms at week 8 of treatment, $p > 0.05$ (Supplementary Table 1).

Effect of bacillary load on tuberculosis symptoms and bacteriological test positivity

The median BL at baseline was $7.46E+05$ eCFU/ml. A total of 23 patients (50%) had high BL above the median value (Table 3). Chest pain, night sweats, and loss of appetite resolved rapidly in response to treatment irrespective of baseline BL, $p > 0.05$. Cough resolved slowly and independently of the pre-treatment BL, $p = 0.95$. In contrast to cough, sputum production resolved more slowly in patients with low BL than those with high BL, $p = 0.04$. In a multivariate analysis, there was no association between low or high BL with the resolution of cough [AHR, 0.85 (0.42–1.73); $p = 0.65$], sputum production [AHR, 1.77 (0.90–3.47); $p = 0.09$], and chest pain [AHR, 1.25 (0.60–2.59); $p = 0.55$] after adjustment for HIV, age, and sex (Supplementary Table 2).

TABLE 1 Baseline characteristics of the patients ($N = 46$).

Age in years, median (range)	37 (18–65)
Sex	
Male, n (%)	28 (60.9)
Re-treatment, n (%)	6 (13.0)
HIV status	
HIV positive, n (%)	18 (39.1)
HIV negative, n (%)	25 (54.3)
Unknown HIV status, n (%)	3 (6.5)
Bacteriological tests	
Xpert MTB/RIF Assay, n (%)	46 (100)
Sputum smear microscopy, n (%)	39 (84.8)
Liquid culture in MGIT, n (%)	43 (93.5)
Solid culture in LJ, n (%)	39 (84.7)
TB-MBLA, n (%)	46 (100)
TB clinical symptoms	
Cough, n (%)	45 (97.8)
Chest pain, n (%)	37 (80.3)
Sputum production, n (%)	46 (100)
Sweats, n (%)	40 (86.9)
Loss of appetite, n (%)	35 (76.1)

HIV, human immunodeficiency virus; LJ, Lowenstein–Jensen media; MGIT, mycobacterium growth indicator tubes; TB, tuberculosis; TB-MBLA; tuberculosis molecular bacterial load assay.

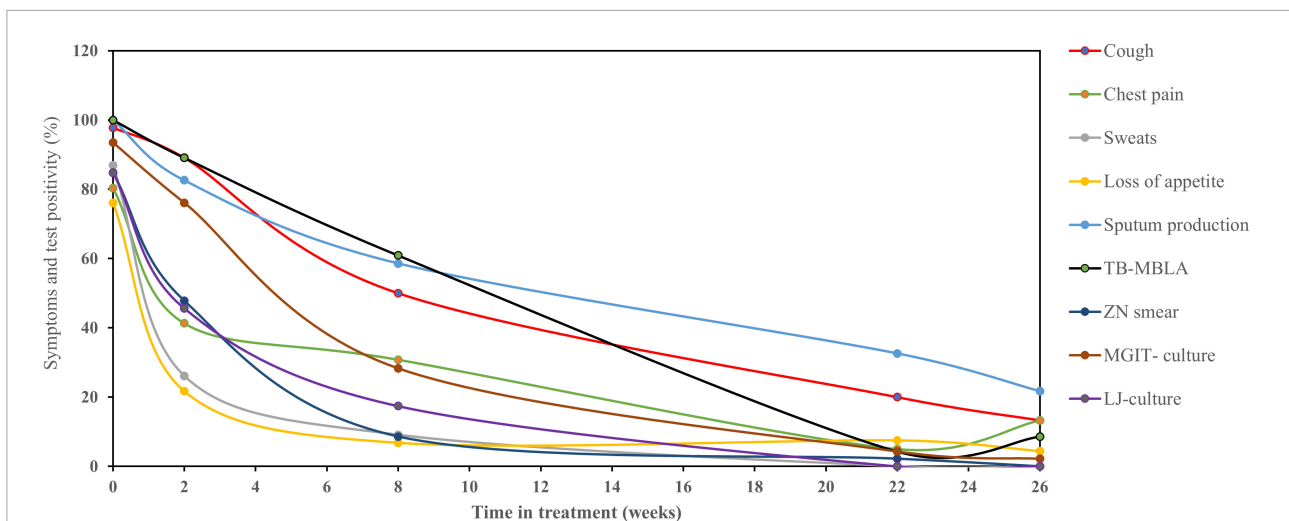


FIGURE 2
Relationship of TB clinical symptoms clearance with bacteriological tests. Clinical symptoms resolved rapidly during TB therapy with the exception of cough and sputum production which resolved slowly than culture, microscopy, and TB-MBLA. Data are presented as the percentage (%) of patients with clinical symptoms and bacteriological positivity over the time in treatments (weeks).

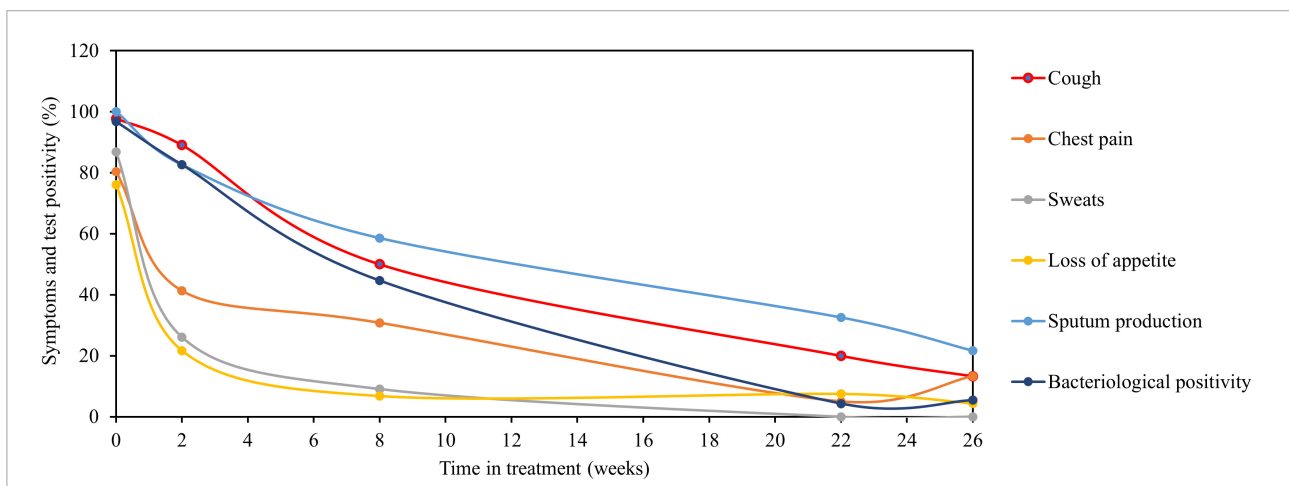


FIGURE 3
Average bacteriological positivity compared to clinical symptoms clearance. Relationship of clinical symptoms clearance compared to average bacteriological positivity of TB-MBLA and culture. Clinical symptoms (sweats, loss of appetite, and chest pain) resolved more rapidly than the average bacteriological positivity. Resolution of cough was slow matching the resolution of average bacteriological positivity, while sputum production resolved more slowly than average bacteriological positivity. Data are presented as the percentage (%) of patients with clinical symptoms and average bacteriological positivity over the time in treatments (weeks). The average bacteriological positivity (\pm SD) was 96.7 ± 4.6 , 82.6 ± 9.2 , 44.6 ± 23.1 , 4.3 ± 0 , and 6.5 ± 3.04 at baseline (week 0), weeks 2, 8, 22, and 26, respectively.

The median time to sputum smear and LJ culture conversion-to-negative was shorter than the time for MGIT culture negative, while TB-MBLA had the highest median time to a negative result for patients with both low and high BL (Table 3). Unlike SM and MGIT culture, patients with low BL had a significantly shorter median time for conversion-to-negative, 2 weeks versus 8 weeks in patients with high BL, $p = 0.03$. Patients with low BL were more likely to clear TB bacillary load at weeks 8 and 26 of treatment, HR 5.6, $p = 0.003$ and HR 3.2, $p = 0.014$, respectively (Figure 4).

Effect of HIV status on tuberculosis symptoms and bacteriological test positivity

The prevalence of HIV was 39.1%. Chest pain, night sweats, and loss of appetite resolved rapidly in response to treatment and there was no difference in the median time to the resolution of TB symptoms between patients with HIV positive and negative, $p > 0.05$ (Table 4). Overall, the median time to the resolution of cough and sputum production was slightly higher

in patients with HIV positive than HIV negative, $p > 0.05$. For bacteriological tests, with the exception to SM, the median time to MGIT and LJ culture conversion from positive to negative was not statistically different among patients with HIV

positive and negative, $p > 0.05$. Overall, TB-MBLA had the highest time to BL clearance among patients with HIV positive and negative compared to smear and culture tests, $p > 0.05$ (Table 4).

TABLE 2 Percentage (%) agreement of clinical symptoms with bacteriological tests.

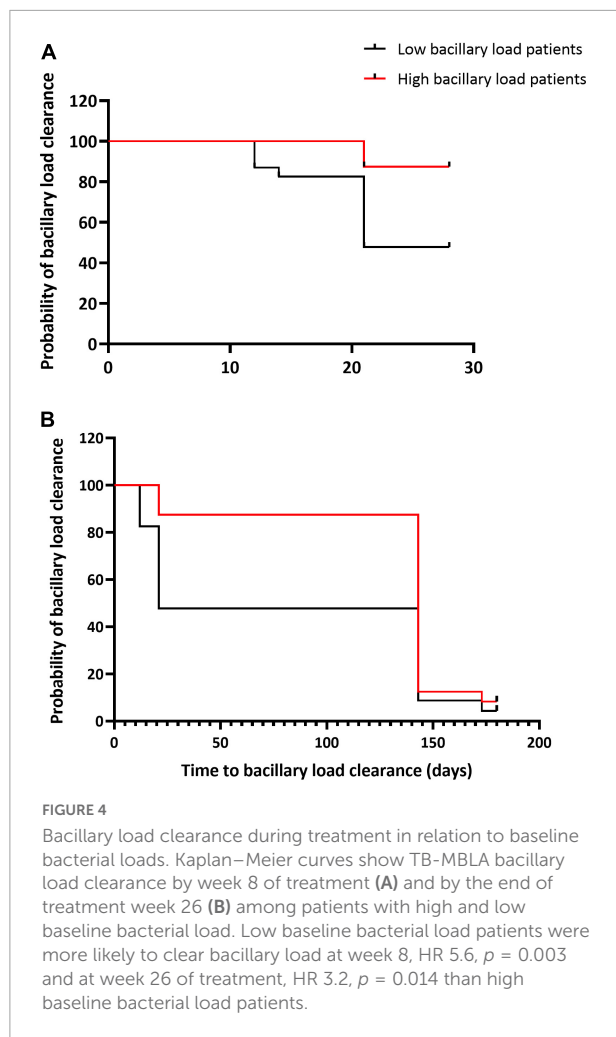
Agreement (%) throughout treatment						
	Variable	Baseline	Week 2	Week 8	Week 22	Week 26
Smear	Cough	86.96	41.30	53.49	68.29	86.67
	Chest pain	80.43	50.00	69.77	90.00	86.67
	Sweats	76.09	56.52	90.70	95.00	97.78
	Loss of appetite	73.91	63.04	86.05	87.50	97.78
	Sputum production	86.96	52.17	40.00	60.00	77.78
LJ culture	Cough	86.96	43.48	41.86	68.29	82.22
	Chest pain	80.43	43.48	53.49	90.00	82.22
	Sweats	80.43	58.70	72.09	95.00	93.33
	Loss of appetite	80.43	54.35	67.44	87.50	93.33
	Sputum production	86.96	36.96	33.33	60.00	73.33
MGIT culture	Cough	93.48	86.96	73.26	70.73	88.89
	Chest pain	78.26	34.78	55.81	87.50	84.44
	Sweats	82.61	34.78	72.09	92.50	91.11
	Loss of appetite	76.09	28.26	62.79	85.00	91.11
	Sputum production	93.48	67.39	62.79	62.50	75.56
TB-MBLA	Cough	100	82.61	44.19	65.85	75.56
	Chest pain	84.78	39.13	32.56	82.50	80.00
	Sweats	89.13	32.61	39.53	87.50	86.67
	Loss of appetite	100	30.43	34.88	80.00	86.67
	Sputum production	100	71.74	37.78	62.50	71.11
	Smear	86.96	54.35	45.65	88.37	88.89
	LJ culture	86.96	56.52	54.35	88.37	86.67
	MGIT culture	93.48	82.61	58.70	90.70	82.22

The percentage agreement between TB-MBLA with other bacteriological measures and clinical symptoms was over 80% at the time of diagnosis. Cough, loss of appetite, and sputum production were 100% in agreement with TB-MBLA. The percentage agreement decreased between treatment weeks 2 and 8, then increased between treatment weeks 22 and 26. The lowest agreement of TB-MBLA with all clinical symptoms and other bacteriological measures was at week 8 of treatment.

TABLE 3 Time to the resolution of clinical and bacteriological measures stratified by bacterial loads.

Median time to resolution of clinical symptoms (weeks)				
Clinical symptoms	All patients ($n = 46$)	High-bacterial load ($n = 23$)	Low-bacterial load ($n = 23$)	P -value
Cough, n (IQR)	17.9 (8.0–23.9)	17.9 (8.0–20.5)	19.8 (8.0–23.9)	0.95
Sputum production, n (IQR)	19.4 (8.0–21.8)	8.1 (2.0–19.9)	19.9 (8.0–23.9)	0.04
Chest pain, n (IQR)	2.1 (2.0–19.8)	2.0 (2.0–11.5)	2.4 (2.0–19.9)	0.39
Sweats, n (IQR)	2.0 (2.0–8.0)	2.0 (2.0–8.0)	2.0 (2.0–6.0)	0.33
Loss of appetite, n (IQR)	2.0 (2.0–6.0)	2.0 (2.0–8.0)	2.3 (2.0–6.0)	0.58
Smear microscopy, n (IQR)	7.8 (2.0–8.0)	2.1 (2.0–8.0)	8.0 (2.0–8.0)	0.67
LJ, n (IQR)	7.8 (2.0–8.1)	8.0 (2.8–18.4)	2.0 (2.0–8.0)	0.03
MGIT, n (IQR)	8.0 (7.8–18.0)	8.0 (7.8–18.4)	8.0 (7.8–8.0)	0.83
TB-MBLA, n (IQR)	19.8 (8.0–19.9)	19.9 (11.7–19.9)	8.1 (7.8–19.9)	0.39

Cox proportion hazard ratio for the association between median time to the resolution (in weeks) of TB clinical symptoms stratified by the baseline bacterial load. IQR, interquartile range; LJ, Lowenstein–Jensen media; MGIT, mycobacterium growth indicator tubes; TB-MBLA, tuberculosis-molecular bacterial load assay.



Discussion

Using the data from this clinical study, we have demonstrated that the concordance of symptoms and bacteriological tests is high before and low after treatment initiation. The strong pre-treatment agreement is in line with a recent report from South Africa (11). While other symptoms improved rapidly in the first 2 weeks of treatment, cough and sputum production improved slowly than bacteriological tests, as previously reported (13, 14). The rapid resolution of symptoms such as chest pain, night sweats, and loss of appetite seems to reflect the early bactericidal activity of anti-TB therapy. Studies have shown that most actively growing bacilli are killed within the first 2 weeks of treatment leaving the dormant (hard to clear) bacilli to persist longer on treatment course (23, 37).

Cough resolution followed closely that of bacillary load measured by TB-MBLA. The cough-TB-MBLA resolution relationship observed was more pronounced than the relationship with standard culture and sputum SM. Early clinical trials have demonstrated an association of TB symptoms

with bacteriological tests during treatment (14, 38). Most importantly, analysis of the data from four clinical trials showed that TB symptoms (fever and sweats) resolved rapidly in the first 8 weeks of treatment whereas cough resolved slowly and was present in 20% of patients at the end of treatment (14). This finding is consistent with our study in which 20 and 15% of patients were coughing at weeks 22 and 26 of treatment, respectively, of whom four out of seven patients (57%) were HIV positive. A total of 14.2% of the coughing patients at week 26 were TB-MBLA positive. The presence of residual inflammation or other ailments arising as TB bacteria are cleared may explain the high positivity of cough at the end of treatment.

Interestingly, patients with low baseline BL took longer time to resolve sputum production than those with high BL. Further analysis of these patients revealed that 44% were HIV positive, an indication that the persistent sputum production could be driven by other opportunistic ailments and not underlying TB bacillary load. It is long established that HIV infection increases the risk of infection with other respiratory pathogens that may exacerbate and prolong symptoms such as cough and sputum production (39, 40). Thus, this interpretation and the overall relationship of clinical symptom clearance in TB/HIV-coinfected patients including those with low bacillary load warrants further investigation in a large cohort of HIV/TB-coinfected patients.

We further compared our results with a clinical trial for shortening the treatment of patients with drug-sensitive HIV-negative PTB conducted in Uganda, Brazil, and the Philippines. The study revealed that clinical symptoms declined rapidly by week 8 of treatment and that symptoms including fever, cough, and chest pain were more common among patients who had culture positive during follow-up (13). In contrast, the presence of TB symptoms at week 8 of treatment was not associated with bacteriological positivity in our study. Most patients with TB symptoms such as cough and sputum production at week 8 were negative by culture and sputum smear tests. Moreover, bacteriological tests were positive in some patients who had no TB symptoms at week 8 of treatment. At week 26, two patients who had no TB symptoms would have been declared clinically well and discharged from treatment in the absence of culture as the case in resource-poor countries. The novel TB-MBLA demonstrated highest positivity rate among patients with and without TB symptoms including those who were culture and smear negative. This discrepancy may be explained by the low sensitivity of SM, which is limited to 10,000 CFU/ml (6, 17), the effect of chemical decontamination on viable TB bacilli, and the presence of non-culturable bacteria, which do not grow in routine culture media (17, 21).

It is important to note that both clinical and bacteriological measures responded to treatment, falling to less than 20% positivity except for sputum production which was slightly above 20% positivity. The discordance could be due to the limitation of sputum-based tests as they only capture a

TABLE 4 Time to the resolution of TB symptoms and bacteriological tests stratified by HIV status.

Clinical symptoms	Median time to resolution of clinical symptoms (weeks)			
	All patients (<i>n</i> = 46)	HIV positive (<i>n</i> = 23)	HIV negative (<i>n</i> = 23)	<i>P</i> -value
Cough, <i>n</i> (IQR)	17.9 (8.0–23.9)	19.9 (9.8–23.9)	8.0 (7.8–23.9)	0.33
Sputum production, <i>n</i> (IQR)	19.9 (8.0–23.9)	19.9 (8.1–23.9)	8.0 (8.0–21.8)	0.67
Chest pain, <i>n</i> (IQR)	2.0 (2.0–11.5)	8.0 (2.0–19.9)	2.0 (2.0–8.0)	0.09
Sweats, <i>n</i> (IQR)	2.0 (2.0–8.0)	2.0 (2.0–11.5)	2.0 (2.0–2.8)	0.07
Loss of appetite, <i>n</i> (IQR)	2.0 (2.0–8.0)	2.0 (2.0–6.0)	2.0(2.0–8.0)	0.52
Smear microscopy, <i>n</i> (IQR)	8.0 (2.0–8.0)	2.1 (2.0–8.0)	8.0(2.0–8.0)	0.60
LJ, <i>n</i> (IQR)	6.0 (2.0–8.1)	2.0 (2.0–17.9)	8.0 (2.0–8.0)	0.60
MGIT, <i>n</i> (IQR)	8.0 (7.8–18.0)	8.0 (7.8–17.9)	8.0 (7.8–8.0)	0.84
MBLA, <i>n</i> (IQR)	19.8 (8.0–19.9)	18.4 (8.0–19.9)	19.8 (8.0–19.9)	0.86

Cox proportion hazard ratio shows the association between median time to resolution (in weeks) of TB clinical symptoms stratified by HIV status. *n* (IQR), number of weeks (interquartile range); LJ, Lowenstein–Jensen media; MGIT, mycobacterium growth indicator tubes; TB-MBLA; tuberculosis-molecular bacterial load assay.

proportion of bacilli in the lungs and only those that can grow in culture (41). This may explain why TB-MBLA which measures total RNA reflecting both actively growing and dormant bacilli is more sensitive and appears more consistent with the resolution of cough. Moreover, clinical symptoms are not specific and can be caused by any other respiratory disease. For example, cough and chest pain are some of the most common symptoms of COVID-19 (42).

Our study has several limitations. Screening and enrollment were based on the presence of TB symptoms at diagnosis and a positive Xpert MTB/RIF Assay result. This approach selectively included only patients who had symptoms of active PTB and increased the chance of those patients being positive by bacteriological tests at diagnosis and a higher percentage agreement than in treatment follow-up visits. Secondly, we enrolled a low number of patients with 6-month follow-up visits and we were not able to establish if treatment failure was due to relapse or re-infections. Because of the small number of patients, we were unable to find a difference in time to the resolution of TB symptoms or bacteriological positivity in relation to baseline BL and HIV status. Clinical studies involving larger number of patients and longer follow-up past the current 6 months of TB therapy in healthcare settings are underway and will shed more light on the long-term relationship of clinical symptoms particularly cough with bacteriological tests and final outcomes. Such studies will further help to understand the clinical relevance of TB positive results by TB-MBLA when routine standard bacteriological tests, culture, and microscopy are negative and provide additional data about the causes of recurrent tuberculosis after successful treatment.

Conclusion

We showed a high percentage agreement of clinical symptoms with bacteriological positivity for TB at diagnosis

which weakens rapidly during the early weeks of anti-TB therapy. Our findings provide new evidence that relying solely on TB symptoms for diagnosis or monitoring may mislead treatment decisions of some patients and final treatment outcomes. Our findings advocate for more investments in bacteriological tests to improve the accuracy of TB diagnosis and treatment monitoring in routine healthcare settings.

Data availability statement

The data supporting the conclusions of this article will be available by authors upon request and without undue reservation.

Ethics statement

The studies involving human participants were reviewed and approved by the Mbeya Medical Research and Ethics Committee (MRH/R.10/18VOLL.VII/12) and University of St Andrews Teaching and Research Ethics Committee (MD12678). National approval was obtained from National Institute for Medical Research (NIMR/HQ/R.8a/Vol.IX/2400) in Tanzania. The patients/participants provided their written informed consent to participate in this study.

Author contributions

BM, WS, NN, IS, and SG conceived and designed the study. BM, WS, IS, and NN developed the research tools. BM, ES, and JJ collected the data. BM, WS, and WO led database cleaning, data analysis, and created figures and tables. BM drafted the manuscript. SG, WS, and NN proofread the manuscript. All authors reviewed the manuscript before submission.

Funding

This work was supported by the Commonwealth Ph.D. studentship award to BM (Award number: TZS-2016-718) at the University of St Andrews and European and Developing Countries Clinical Trials Partnership through TWENDE project (grant number: TWENDE-EDCTP-CSA-2014-283) and PanACEA II (grant number: 97118-PanACEA-TRIA.2015.1102) awarded to SG and WS at the University of St Andrews, United Kingdom.

Acknowledgments

We thank the patients for their participation in the study and for the contribution of the samples to this research.

Conflict of interest

Life Arc, which is developing TB-MBLA for clinical use, receives pro bono advice from SG and WS.

References

1. Maclean, E, Mckenna L, Ruhwald M. *Pipeline Report 2021*. New York, NY: Treatment Action Group (2021).
2. World Health Organization. *Global Tuberculosis Report*. Geneva: World Health Organization (2021).
3. Tiberi S, du Plessis N, Walzl G, Vjecha MJ, Rao M, Ntoumi F, et al. Tuberculosis: progress and advances in development of new drugs, treatment regimens, and host-directed therapies. *Lancet Infect Dis*. (2018) 18:e183–98.
4. Cadosch D, Abel zur Wiesch P, Kouyos R, Bonhoeffer S. The role of adherence and retreatment in de novo emergence of MDR-TB. *PLoS Comput Biol*. (2016) 12:e1004749. doi: 10.1371/journal.pcbi.1004749
5. Gillespie SH, Crook AM, McHugh TD, Mendel CM, Meredith SK, Murray SR, et al. Four-month moxifloxacin-based regimens for drug-sensitive tuberculosis. *N Engl J Med*. (2014) 371:1577–87. doi: 10.1056/NEJMoa1407426
6. Horne DJ, Royce SE, Gooze L, Narita M, Hopewell PC, Nahid P, et al. Sputum monitoring during tuberculosis treatment for predicting outcome: systematic review and meta-analysis. *Lancet Infect Dis*. (2010) 10:387–94. doi: 10.1016/S1473-3099(10)70071-2
7. Goletti D, Lindestam Arlehamn CS, Scriba TJ, Anthony R, Cirillo DM, Alonzi T, et al. Can we predict tuberculosis cure? What tools are available? *Eur Respir J*. (2018) 52:1801089.
8. Diktanas S, Vasiliauskiene E, Polubenko K, Danila E, Celedinaite I, Boreikaite E, et al. Factors associated with persistent sputum positivity at the end of the second month of tuberculosis treatment in Lithuania. *Tuberc Respir Dis (Seoul)*. (2018) 81:233–40. doi: 10.4046/trd.2017.0096
9. Lodenkemper R, Lipman M, Zumla A. Clinical aspects of adult tuberculosis. *Cold Spring Harb Perspect Med*. (2016) 6:1–25.
10. Cudahy P, Haven N, Shenoi S. Diagnostic for pulmonary tuberculosis. *Postgr Med J*. (2016) 92:187–93.
11. Govender I, Karat AS, Olivier S, Baisley K, Beckwith P, Dayi N, et al. Prevalence of Mycobacterium tuberculosis in sputum and reported symptoms among clinic attendees compared with a community survey in rural South Africa. *Clin Infect Dis*. (2022) 75:314–22.
12. Cain KP, McCarthy KD, Heilig CM, Monkongdee P, Tasaneeyapan T, Kanara N, et al. An algorithm for tuberculosis screening and diagnosis in people with HIV. *N Engl J Med*. (2010) 362:707–16.
13. Bark CM, Dietze R, Okwera A, Quelapio MI, Thiel BA, Johnson JL. Clinical symptoms and microbiological outcomes in tuberculosis treatment trials. *Tuberculosis*. (2011) 91:601–4.
14. Hales CM, Heilig CM, Chaisson R, Leung CC, Chang KC, Goldberg SV, et al. The association between symptoms and microbiologically defined response to tuberculosis treatment. *Ann Am Thorac Soc*. (2013) 10:18–25.
15. Friedrich SO, Rachow A, Saathoff E, Singh K, Mangu CD, Dawson R, et al. Assessment of the sensitivity and specificity of Xpert MTB/RIF assay as an early sputum biomarker of response to tuberculosis treatment. *Lancet Respir Med*. (2013) 1:462–70.
16. Kayigire XA, Friedrich SO, Karinja MN, van der Merwe L, Martinson NA, Diacon AH. Propidium monoazide and Xpert MTB / RIF to quantify *Mycobacterium tuberculosis* cells. *Tuberculosis*. (2016) 101:79–84. doi: 10.1016/j.tube.2016.08.006
17. van Zyl-Smit RN, Binder A, Meldau R, Mishra H, Semple PL, Theron G, et al. Comparison of quantitative techniques including Xpert MTB/RIF to evaluate mycobacterial burden. *PLoS One*. (2011) 6:e28815. doi: 10.1371/journal.pone.0028815
18. Phillips PPJ, Mendel CM, Burger DA, Crook AM, Nunn AJ, Dawson R, et al. Limited role of culture conversion for decision-making in individual patient care and for advancing novel regimens to confirmatory clinical trials. *BMC Med*. (2016) 14:19. doi: 10.1186/s12916-016-0565-y
19. de Kneegt GJ, Dickinson L, Pertinez H, Evangelopoulos D, McHugh TD, Bakker-Woudenberg IAJM, et al. Assessment of treatment response by colony forming units, time to culture positivity and the molecular bacterial load assay compared in a mouse tuberculosis model. *Tuberculosis*. (2017) 105:113–8. doi: 10.1016/j.tube.2017.05.002
20. Mtafya B, Sabi I, Ntinginya NE, Sabiiti W, Msuya Y, et al. *Clinical Evaluation of the Novel Molecular Bacterial Load Assay for Monitoring of Tuberculosis Treatment Response NIMR-Mbeya Medical Research Centre*. Mbeya: Tanzania

The remaining authors declare that the research was conducted in the absence of any commercial or financial relationships that could be construed as a potential conflict of interest.

Publisher's note

All claims expressed in this article are solely those of the authors and do not necessarily represent those of their affiliated organizations, or those of the publisher, the editors and the reviewers. Any product that may be evaluated in this article, or claim that may be made by its manufacturer, is not guaranteed or endorsed by the publisher.

Supplementary material

The Supplementary Material for this article can be found online at: <https://www.frontiersin.org/articles/10.3389/fmed.2022.992451/full#supplementary-material>

National TB and Leprosy Control Programme-Mbeya Regional TB and Leprosy Control (2019). p. 1–24.

21. Pheiffer C, Carroll NM, Beyers N, Donald P, Duncan K, Uys P, et al. Time to detection of *Mycobacterium tuberculosis* in BACTEC systems as a viable alternative to colony counting. *Int J Tuberc Lung Dis.* (2008) 12:792–8.

22. Parsons LM, Somoskovi A, Gutierrez C, Lee E, Paramasivan CN, Abimiku A, et al. Laboratory diagnosis of tuberculosis in resource-poor Countries: challenges and opportunities. *Clin Microbiol Rev.* (2011) 24:314–50.

23. Kayigire XA, Friedrich SO, Van Der Merwe L, Donald PR, Diacon AH. Simultaneous staining of sputum smears for acid-fast and lipid-containing *Mycobacterium tuberculosis* can enhance the clinical evaluation of antituberculosis treatments. *Tuberculosis.* (2015) 95:770–9. doi: 10.1016/j.tube.2015.08.001

24. Rockwood N, du Bruyn E, Morris T, Wilkinson RJ. Assessment of treatment response in tuberculosis. *Expert Rev Respir Med.* (2016) 10:643–54.

25. Global Tuberculosis Report. *Global Tuberculosis Report.* Geneva: Global Tuberculosis Report (2021).

26. Sabiiti W, Azam K, Farmer ECW, Kuchaka D, Mtafya M, Bowness R, et al. Tuberculosis bacillary load, an early marker of disease severity: the utility of tuberculosis molecular bacterial load assay. *Thorax.* (2020) 75:606–8. doi: 10.1136/thoraxjnl-2019-214238

27. Honeyborne I, Mtafya B, Phillips PPJ, Hoelscher M, Ntinginya EN, Kohlenberg A, et al. The molecular bacterial load assay replaces solid culture for measuring early bactericidal response to antituberculosis treatment. *J Clin Microbiol.* (2014) 52:3064–7. doi: 10.1128/JCM.01128-14

28. Moore DF, Curry JI, Knott CA, Jonas V. Amplification of rRNA for assessment of treatment response of pulmonary tuberculosis patients during antimicrobial therapy. *J Clin Microbiol.* (1996) 34:1745–9. doi: 10.1128/JCM.34.7.1745-1749.1996

29. Honeyborne I, McHugh TD, Phillips PPJ, Bannoo S, Bateson A, Carroll N, et al. Molecular bacterial load assay, a culture-free biomarker for rapid and accurate quantification of sputum *Mycobacterium tuberculosis* bacillary load during treatment. *J Clin Microbiol.* (2011) 49:3905–11. doi: 10.1128/JCM.00547-11

30. Deutscher MP. Degradation of RNA in bacteria: comparison of mRNA and stable RNA. *Nucleic Acids Res.* (2006) 34:659–66.

31. Desjardin LE, Perkins MD, Wolski K, Haun S, Teixeira L, Chen Y, et al. Measurement of sputum mycobacterium tuberculosis messenger RNA as a surrogate for response to chemotherapy. *Am J Respir Crit Care Med.* (1999) 160:203–10. doi: 10.1164/ajrccm.160.1.9811006

32. Rustad TR, Minch KJ, Brabant W, Winkler JK, Reiss DJ, Baliga NS, et al. Global analysis of mRNA stability in *Mycobacterium tuberculosis*. *Nucleic Acids Res.* (2013) 41:509–17.

33. World Health Organization. *Definitions and Reporting Framework for Tuberculosis: 2013 Revision (WHO/HTM/TB/2013.2).* Geneva: World Health Organization (2014).

34. Gillespie SH, Sabiiti W, Oravcova K. Mycobacterial load assay. In: Bishop-Lilly K editor. *Diagnostic Bacteriology: Methods and Protocols, Methods in Molecular Biology.* New York, NY: Humana Press (2017). p. 89–105. doi: 10.1007/978-1-4939-7037-7_5

35. Stinson KW, Eisenach K, Kayes S, Matsumoto M, Siddiqi S, Nakashima S. *Mycobacteriology Laboratory Manual: Global Laboratory Initiatives Advancing TB diagnosis.* 1st ed. Geneva: Global Laboratory Initiative (2014).

36. Siddiqi SH, Rüsç-Gerdes S. *MGIT Procedure Manual: For Bactectm MGIT 960TM TB System.* Geneva: Foundation for Innovative New Diagnostics (2006).

37. Bowness R, Boeree MJ, Aarnoutse R, Dawson R, Diacon A, Mangu C, et al. The relationship between *Mycobacterium tuberculosis* mgit time to positivity and cfu in sputum samples demonstrates changing bacterial phenotypes potentially reflecting the impact of chemotherapy on critical sub-populations. *J Antimicrob Chemother.* (2015) 70:448–55. doi: 10.1093/jac/ku415

38. Woimo TT, Yimer WK, Bati T, Gesesew HA. The prevalence and factors associated for anti-tuberculosis treatment non-adherence among pulmonary tuberculosis patients in public health care facilities in South Ethiopia: a cross-sectional study. *BMC Public Health.* (2017) 17:269. doi: 10.1186/s12889-017-4188-9

39. Crothers K, Thompson BW, Burkhardt K, Morris A, Flores SC, Diaz PT, et al. HIV-Associated lung infections and complications in the Era of combination antiretroviral therapy. *Proc Am Thorac Soc.* (2011) 8:275–81.

40. Benito N, Moreno A, Miro JM, Torres A. Pulmonary infections in HIV-infected patients: an update in the 21st century. *Eur Respir J.* (2012) 39:730–45. doi: 10.1183/09031936.00200210

41. Mukamolova GV, Turapov O, Malkin J, Woltmann G, Barer MR. Resuscitation-promoting factors reveal an occult population of tubercle *Bacilli* in sputum. *Am J Respir Crit Care Med.* (2010) 181:174–80. doi: 10.1164/rccm.200905-0661OC

42. Visca D, Ong CWM, Tiberi S, Centis R, D'Ambrosio L, Chen B, et al. Tuberculosis and COVID-19 interaction: a review of biological, clinical and public health effects. *Pulmonary.* (2021) 27:151–65.