



Therapeutic Effects of Cold Atmospheric Plasma on Solid Tumor

Tianhao Min^{1†}, Xin Xie^{2†}, Kaijie Ren¹, Tuanhe Sun¹, Haonan Wang¹, Chengxue Dang^{1*} and Hao Zhang^{1*}

¹ Department of Surgical Oncology, The First Affiliated Hospital of Xi'an Jiaotong University, Xi'an, China, ² Department of Nuclear Medicine, The First Affiliated Hospital of Xi'an Jiaotong University, Xi'an, China

OPEN ACCESS

Edited by:

Weiren Luo,
The Second Affiliated Hospital of
Southern University of Science and
Technology, China

Reviewed by:

Georg Bauer,
Retired, Freiburg, Germany
Laura Fouassier,
Institut National de la Santé et de la
Recherche Médicale
(INSERM), France

*Correspondence:

Chengxue Dang
dangchengxue@mail.xjtu.edu.cn
Hao Zhang
hao.zhang@mail.xjtu.edu.cn

[†]These authors have contributed
equally to this work

Specialty section:

This article was submitted to
Translational Medicine,
a section of the journal
Frontiers in Medicine

Received: 27 February 2022

Accepted: 13 April 2022

Published: 13 May 2022

Citation:

Min T, Xie X, Ren K, Sun T, Wang H,
Dang C and Zhang H (2022)
Therapeutic Effects of Cold
Atmospheric Plasma on Solid Tumor.
Front. Med. 9:884887.
doi: 10.3389/fmed.2022.884887

Cancer is a devastating disease, and there is no particularly effective treatment at present. Recently, a new treatment, cold atmospheric plasma (CAP), has been proposed. At present, CAP is confirmed to have selective killing effect on tumor by many studies *in vitro* and *in vivo*. A targeted literature search was carried out on the study of cold atmospheric plasma. Through analysis and screening, a narrative review approach was selected to describe therapeutic effects of cold atmospheric plasma on solid tumor. According to the recent studies on plasma, some hypothetical therapeutic schemes of CAP are proposed in this paper. The killing mechanism of CAP on solid tumor is expounded in terms of the selectivity of CAP to tumor, the effects of CAP on cells, tumor microenvironment (TME) and immune system. CAP has many effects on solid tumors, and these effects are dose-dependent. The effects of optimal doses of CAP on solid tumors include killing tumor cells, inhibiting non-malignant cells and ECM in TME, affecting the communication between tumor cells, and inducing immunogenic death of tumor cells. In addition, several promising research directions of CAP are proposed in this review, which provide guidance for future research.

Keywords: cold atmospheric plasma, solid tumor, reactive oxygen and nitrogen species, CAP, ROS, RNS

BACKGROUND

According to the latest global cancer burden data presented by the World Health Organization (WHO) and International Agency for Research on Cancer (IARC), in 2020, the number of new cancer cases worldwide rose to 19.29 million, affecting 10.06 million males and 9.23 million females, and the number of worldwide cancer deaths rose to 9.96 million, affecting 5.53 million males and 4.43 million females. One in five people in the world develops cancer in their lifetime, and one in eight men and one in 11 women die of cancer (1). These data convincingly show that cancer has become a major disease that cannot be ignored. Recently, great progress has been made in cancer treatment, and many new methods have been used to treat cancer at any stage (2–4). However, new research is needed to improve cancer treatment efficacy. The latest developments in oncology include combined therapy, which generally affects several tumor cell mechanisms either simultaneously or consecutively to achieve a better therapeutic effect. Although many studies have focused on targeted therapy and immunotherapy (5–7), other studies have focused on promising cold atmospheric plasma (CAP)-related therapy. CAP has been proven to exert a significant lethal effect on tumor cells (8–10).

CAP, also known as cold physical plasma or nonthermal plasma, is a gas that is partially ionized upon discharge and simultaneously triggers the production of many reactive oxygen species (ROS) and reactive nitrogen species (RNS) (together known as RONS). (11) CAP is composed of transient,

high-energy and chemically active substances (electrons, ions, metastable state and free radicals). It exhibits radiation, gas dynamics and electric field characteristics (12). It usually is applied at body temperature to produce many ROS in the gas phase, including hydroxyl radicals (OH), superoxide radicals (O₂⁻), ozone (O₃), atomic oxygen and singlet δ oxygen, and RNS, including peroxyxynitrite (ONOO), nitrogen dioxide radical (NO₂) and nitric oxide (NO) (13, 14). RONS and the oxidative stress responses that they trigger have been confirmed to be related to the killing of tumor cells (8, 9, 15, 16); the specific mechanism is described herein.

The solid tumor formation is a complex processes involving a variety of cells (such as endothelial cells, fibroblasts, inflammatory cells and immune cells) and acellular components (such as extracellular matrix (ECM) factors and secretory factors); collectively, these cellular and extracellular factors are referred to as the tumor microenvironment (TME) (14). To study the effect of CAP on solid tumors, we should not limit the investigation into its effects on tumor cells but should also consider the effects of the TME. An increasing number of people have realized the importance of the TME in the treatment of solid tumors, especially in regulating tumor growth and deterring chemotherapeutic drug resistance (17).

This review discusses the role of CAP in solid tumors. It elaborates the following aspects of CAP as a tumor treatment: feasible CAP treatment methods reported in recent studies; effective CAP components, selective CAP effects on tumor cells; the mechanisms by which CAP induces oxidative damage in tumor cells, affects the TME, and causes immunogenic cell death (ICD); and the research prospects for CAP in tumor therapy.

CAP DEVICES AND HYPOTHETICAL CAP TREATMENTS IN TUMORS

CAP Devices

Many kinds of gases, such as argon, helium, nitrogen, oxygen, air, and mixed gases, are currently used in CAP (18). Different methods and equipment for producing CAP have been developed on the basis of different biomedical conditions (19). Two main types of methods are used directly and indirectly produce plasma, namely, dielectric barrier discharge (DBD) and plasma jets (20). Many laboratories have developed their own specific CAP production equipment because it is easy and inexpensive to make. However, the use of different equipment makes comparing

Abbreviations: CAP, cold atmospheric plasma; ROS, reactive oxygen species; RNS, reactive nitrogen species; RONS, reactive oxygen and nitrogen species; ECM, extracellular matrix; TME, tumor microenvironment; ICD, immunogenic cell death; DBD, dielectric barrier discharge; PAW, plasma-activated water; NOX, NADPH oxidase; ADP, aquaporin; SOD, superoxide dismutase; ER, endoplasmic reticulum; mPTP, mitochondrial permeability transition pore; MAPK, mitogen-activated protein kinase; JNK, c-Jun N-terminal kinase; SAPK, stress-activated protein kinase; ERK, extracellular regulated protein kinases; SSB, single-strand break; DSB, double-strand break; DPC, DNA-protein crosslinking; 8-oxoG, 8-oxoguanine; PAM, plasma-activated medium; CAF, cancer-associated fibroblast; TIME, tumor immune microenvironment; DC, dendritic cell; TEC, tumor endothelial cells; ASMC, adipose-derived stem cell; APC, antigen-presenting cell; EMT, epithelial-mesenchymal transition; TIDC, tumor-associated dendritic cell; DAMP, damage-associated molecular pattern; CRT, calreticulin; NP, nanoparticle.

the results of plasma therapy under the same conditions difficult. Therefore, the standardization of CAP devices is particularly important. Currently, the following types of medical products have been Conformite Europeenne (CE) certified: the DBD device PlasmaDerm[®] VU-2010 (CINOGY Technologies GmbH), the atmospheric pressure plasma jet (APPJ) kINPen[®] MED (INP Greifswald/Neoplas Tools GmbH), and the SteriPlas[®] (Adtec Ltd., London, United Kingdom). (19) These devices have laid the foundation for the application of plasma therapy to solid tumors.

To standardize plasma sources, Mann et al. released DINSPEC91315 in 2014, which specified physical and technical standards (temperature, thermal power, radiation emission, ultraviolet radiation intensity, gas emission, and current flow) of plasma sources for biomedical applications, as well as basic criteria for characterizing biological plasma effects (namely, the effects on microorganisms *in vitro*) (21). DINSPEC91315 laid the foundation for biomedical research on plasma equipment. However, the standard is developed through existing standards and guidelines (DINENISO12100, DINEN60601-1, DINEN60601-1-6 and DINEN60601-2-57), and therefore, it does not define specific limits, as the evaluation of different parameters depends to a large extent on the expected effectiveness and application of the plasma equipment. Other characteristics of medical plasma equipment need to be added to the standards, including physical evaluation criteria, biological evaluation standards and chemical substance detection. The physical standards include gas temperature, gas composition, heat output, electromagnetic radiation and leakage current, while biological standards include the effects on microorganisms, eukaryotic cells and cancer cells. Furthermore, the composition of ROS and RNS and the effect of pH need to be evaluated through chemical detection (22). Collectively, specification of these parameters may improve the DINSPEC91315 and lead to a unified international standard for medical plasma equipment.

Hypothetical CAP Treatment of Tumors

Recently, CAP has been applied to a variety of the clinical situations, especially in the field of dermatology, where it has been used for disinfection, the treatment of atopic eczema, ichthyosis/epidermal barrier defects, wound healing promotion, and scar and herpes zoster treatments (19, 23). CAP therapy of solid tumors is not yet being applied in the clinic [only a few studies have reported CAP cancer applications, and they describe CAP applied to the palliative treatment of end-stage head and neck cancer and grossly contaminated tumor ulcerations (24, 25)]; it is only in the laboratory research stage (26). In recent research, CAP treatment is mainly categorized into two types: direct treatment, that is, the use of a CAP-generating device to directly affect tumors, and indirect treatment, that is, the use of a CAP-generating device to treat a solvent that is subsequently applied to tumors.

These two treatment modalities have unique advantages and disadvantages. Because many ROS are short-lived and therefore only have a very short free diffusion path length, it is hard for them to reach their biological target (27). However, the applications for this treatment are relatively few, and recent

research on direct CAP use has mainly been focused on subcutaneous tumor treatment (Figure 1A). We are committed to making plasma devices more portable for the treatment of other tumors. Recently, a team has developed a small and flexible plasma gun, and animal experiments have been carried out with it to prove CAP treatment efficacy against melanoma (28). We assume that a flexible microplasma gun combined with endoscopy (29) will be a promising device for treating tumors such as gastric, colorectal, lung or abdominal cavity metastases. As a consequence of indirect CAP treatment, the long-lived species hydrogen peroxide and nitrite, present in CAP-activated liquids, can interact in a complex set of reactions and generate the short-lived species singlet oxygen. Singlet oxygen then can inactivate catalase that is specifically present on the surface of tumor cells, but not on nonmalignant cells. As a consequence, the tumor cells start to generate secondary singlet oxygen through the interaction between hydrogen peroxide and peroxynitrite that are generated by the tumor cells themselves. This autoamplificatory mechanism leads to the inactivation of the protective membrane-associated catalase of tumor cells and thus allows specific ROS/RNS-mediated apoptosis-inducing signaling specifically in tumor cells (30–32). Indirect plasma therapy can be used in more types of tumors than direct plasma therapy because it can be injected into solid tumors or added to an abdominal lavage to treat disseminated peritoneal carcinomatosis (11) (Figure 1B).

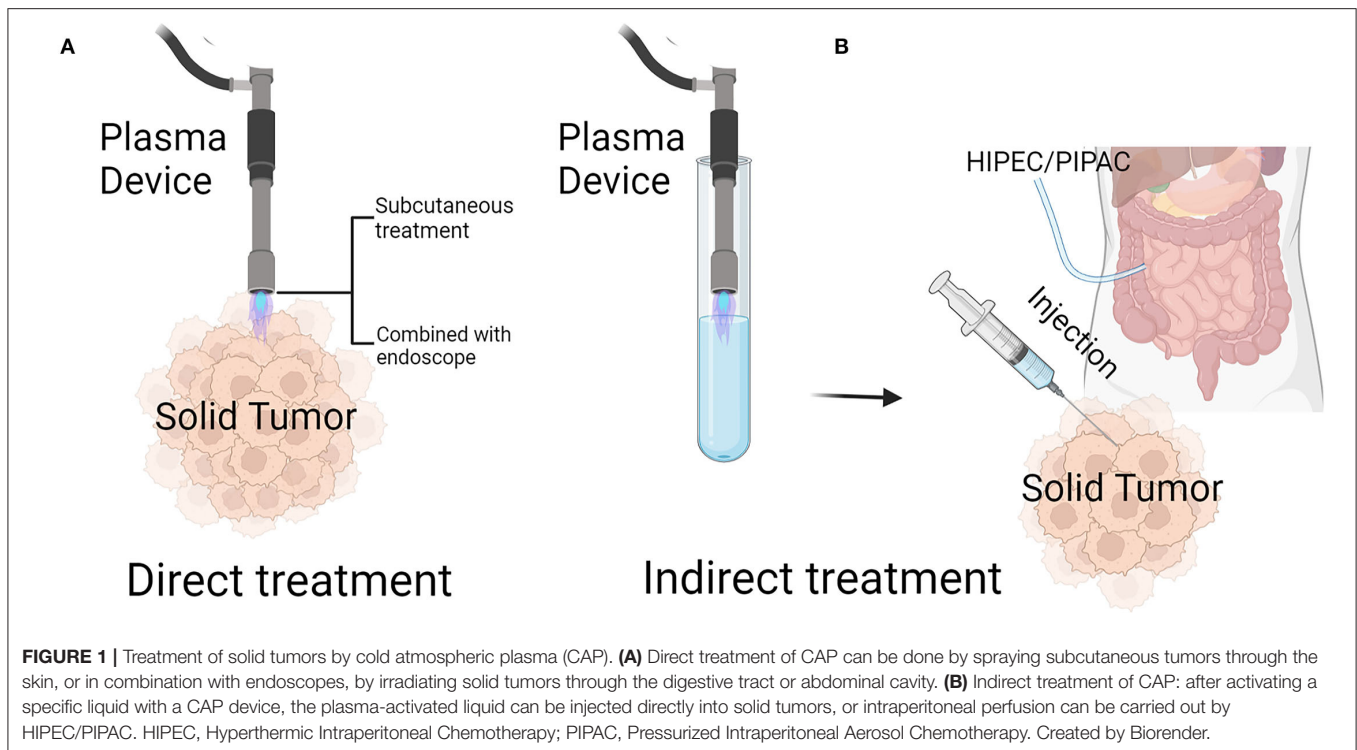
With respect to the safety of plasma therapy, direct therapy has been safely used in dermatology applications, as mentioned above. In addition, although no clinical safety tests have been performed on indirect plasma therapy, many teams have verified the safety of plasma-activated water (PAW) in animal experiments. For example, a toxicity assessment with CD1 mice confirmed that long-term exposure to PAW had no negative effect on homeostasis, did not induce functional or histological changes in important organs, did not cause changes in hematological or biochemical blood parameters, and did not promote inflammation. (33) Xu et al. also proved indirect therapy safety by treating immunodeficient nude BALB/mice with an oral lavage of PAW daily for 2 weeks (34). In addition, Xu et al. proved that PAW can be safely injected into the bone marrow of New Zealand rabbits without inducing obvious toxicity (35).

ACTIVE CAP COMPONENTS AND THE MECHANISMS BY WHICH THEY KILL TUMOR CELLS

According to recent research on the direct or indirect treatment of CAP, the active components produced by CAP are mainly RONS, which can cause oxidative damage in cells and lead to cell death (36–38). Other active CAP components include freely charged particles, ultraviolet radiation and electric fields, but the mechanisms by which these active components affect tumors have not been extensively studied. The molecular mechanism by which CAP induces oxidative damage to tumor cells is described in detail below.

Oxidative Damage Mechanism of Plasma-Derived RONS and Its Selectivity Toward Tumor Cells

In general, ROS refers to oxygen and have active properties in an artificial or natural environment. Herein, we discuss ROS produced by plasma. Many valuable studies have proven that ROS produced by plasma include hydrogen peroxide (H_2O_2), hydroxyl radicals (OH), superoxide radicals (O_2^-), O_3 , atomic oxygen and singlet δ oxygen (13, 39). RONS, especially short-lived RONS, have been proven to be the main active agents exerting biochemical and molecular biological effects through direct and indirect plasma therapy (10, 40, 41). ROS can cause oxidative modification in all biomolecules. Cells utilize several antioxidant mechanisms to prevent ROS/RNS-mediated damage. For non-malignant cells, ROS are generally derived from mitochondrial respiration and external damage (radiation, ionization, etc.). To prevent ROS-induced oxidative damage to cells, cells activate an antioxidant defense system, which is categorized into enzymatic (catalase, glutathione peroxidase and superoxide dismutase) and nonenzymatic (vitamin E, vitamin C, glutathione, β -carotene, urate, bilirubin flavonoid, etc.) forms (42). During oncogenesis, most malignant cells express NADPH oxidase (NOX) in their membrane and thus generate extracellular superoxide anions. These will dismutate and form hydrogen peroxide, which is used as a proliferation signal by the malignant cells. Extracellular superoxide anions as well as hydrogen peroxide of malignant cells also establish specific ROS/RNS-mediated apoptosis-inducing signaling, based on the HOCl and the NO/peroxynitrite signaling pathway. Therefore, efficient tumor progression requires the expression of membrane-associated catalase and superoxide dismutase (SOD), which interfere with ROS/RNS-mediated apoptosis-inducing signaling (31, 32, 43). Trachootham et al. suggested that apoptosis is induced when the intracellular oxidative pressure is exceeding the antioxidant potential of tumor cells. As the experimental findings by Trachootham et al. on which this concept is based had been established through the study of transformed cells, i.e., early stages of carcinogenesis that are not protected by membrane-associated catalase, their study neglected the protection of tumor cells toward exogenous ROS and RNS through membrane-associated catalase (44). Their concept is contrasted by the findings established with bona fide tumor cells, as discussed by Bauer et al. (30, 31, 43). Nitrite, a long-lived RNS, and hydrogen peroxide, a long-lived ROS interact in a synergistic interaction, based on the generation of peroxynitrite and resulting in the formation of singlet oxygen (30, 31, 43). Singlet oxygen produced in this way can inhibit tumor cell membrane-associated catalase and SOD, resulting in the flow of CAP-derived ROS/RNS into tumor cells. (31) RNS-derived nitric oxide (NO) regulates posttranslational modifications, S-nitration and genome-wide epigenetic modifications, which can either promote or inhibit tumorigenesis (32). The fate of cancer cells is RNS concentration-dependent. In tumor cells with high levels of NO, the extra RNS produced by CAP may overwhelm the system and shift the role of NO from promoting tumor formation to inhibiting tumor formation (38).



To determine the selectivity of CAP effects on tumor cells, a team compared tumor cells with homologous normal cells. The results presented in their review showed that, among 33 evaluated cell lines, 26 cell lines showed strong CAP selectivity, five showed weak CAP selectivity, and only two showed negative CAP selectivity (45). This study proved the selectivity of CAP therapy for most tumors. Therefore, herein, we review previous studies, compare the differences in plasma-derived RONS uptake and clearance between tumor cells and nonmalignant cells and explain the mechanism of the selective CAP effect on tumor cells.

With regard to the intake of RONS, many studies have clarified the selective mechanism of the CAP effect on tumor cells, including the cholesterol content and the aquaporin (AQP) expression in the tumor cell membrane.

On the one hand, studies have shown that ROS produced by CAP can oxidize lipids in the cell membrane and tend to induce formation of pores with a size of approximately 15 Å. These pores allow different free active substances to permeate the cell. For normal cells, the high cholesterol content in the plasma membrane prevents the entry of hydrogen peroxide and other active substances (46). However, the cholesterol level in the cancer cell membrane is lower than that of healthy cells; therefore, cancer cells are more vulnerable than normal cells to the influence of cell membrane lipid oxidation, which ultimately produces RONS that penetrate the cell, promote oxidative stress and induce apoptosis (47, 48) (**Figure 2, 2**).

On the other hand, cancer cells tend to express more AQPs in cytoplasmic membranes, enabling cancer cells to absorb H_2O_2 produced by plasma exposure faster than normal cells (45) (**Figure 2, 3**). AQP is a tetramer that forms a key channel

in the cell membrane (49) that promotes the transmembrane transport of H_2O_2 and other small molecules, including carbon dioxide, NO, ammonia, urea and glycerol. (50, 51) Currently, three AQPs (AQP1, AQP3 and AQP8) are known to be involved in the transport of H_2O_2 in cells (52) Yusupov et al. performed computer simulation to determine the selective mechanism of AQP action in tumor cells, and the mechanism was found to be triggered by the high expression of AQPs in the cell membrane. (53).

The selection mechanism of the CAP-induced scavenging effect on RONS in the antioxidant defense system of tumor cells has not been thoroughly studied. However, studies showed that the interactions of singlet oxygen produced by CAP triggered tumor cell production of higher concentrations of secondary singlet oxygen, resulting in the profound inactivation of protective catalase and SOD in tumor cells. (31, 43) In addition (15), the mRNA expression levels of GSTA4, MSRB3, SOD1, SOD2, CAT2 and HMOX1 in cholangiocarcinoma cells and human primary hepatocytes were compared in this study. Compared with those in the two cholangiocarcinoma cell lines, the mRNA expression of several RONS scavenging enzymes in the hepatocytes was significantly increased. In addition, other studies showed that the activity of ROS scavenging enzymes, including glutathione peroxidase, catalase and superoxide dismutase, decreased significantly after CAP treatment (54). However, CAP treatment increased the amount of nonenzymes, such as glutathione, which was significantly oxidized, in the antioxidant-reduction system of lymphocytes (55), while CAP treatment decreased the ratio of glutathione to glutathione disulfide (GSH/GSSG) and NADPH to $NADP^+$

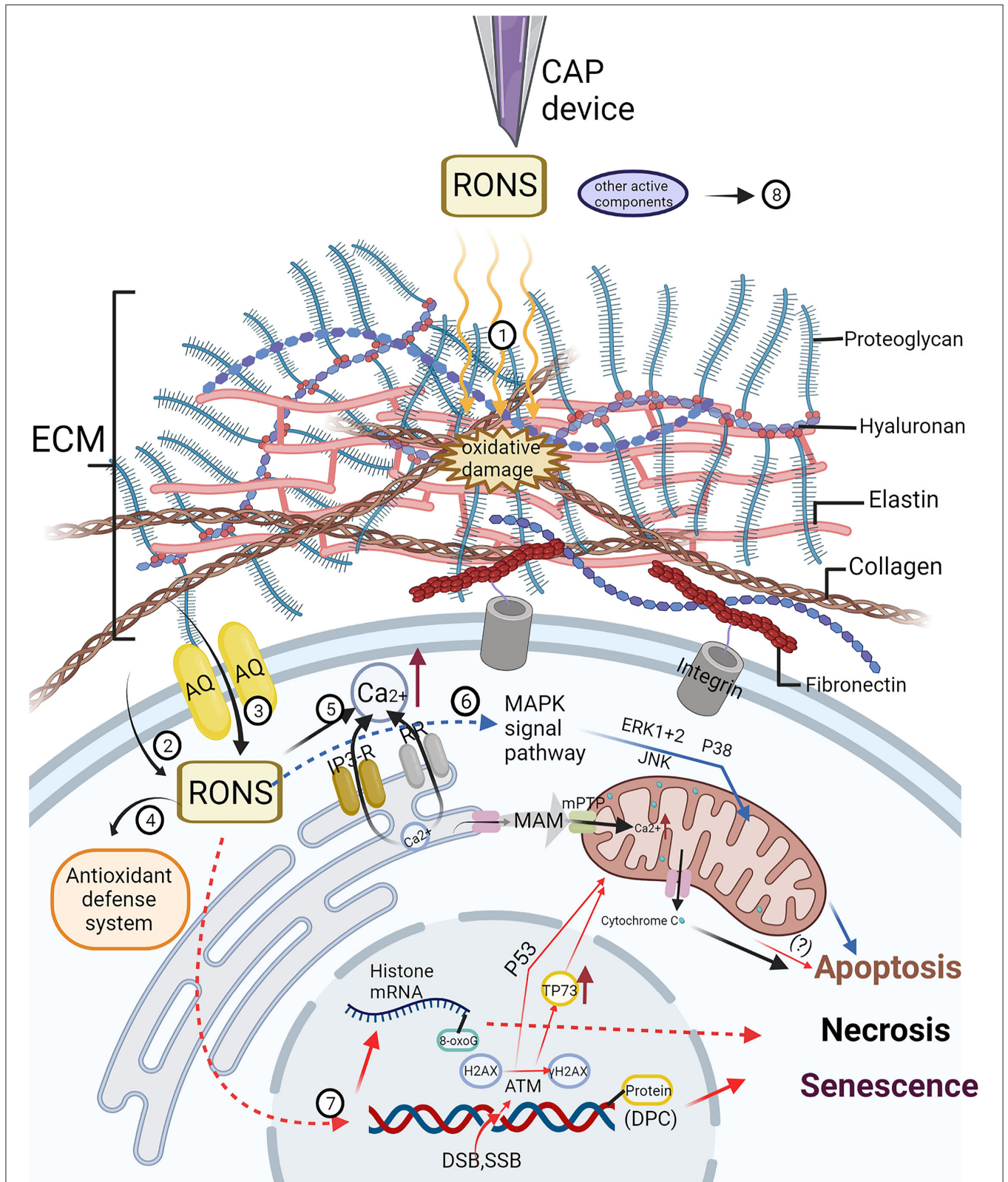


FIGURE 2 | The effect of cold atmospheric plasma (CAP) on extracellular matrix (ECM) and its molecular mechanism on tumor cells have been studied at present. (1) CAP can inhibit tumor progression by oxidizing or destroying the structure of extracellular matrix (ECM), which includes collagen, hyaluronan, fibronectin, integrin and so on. (2) The cholesterol content of tumor cell membrane is lower than that of non-malignant cells, and it is easier for CAP-derived reactive oxygen and nitrogen (Continued)

FIGURE 2 | species (RONS) to oxidize the lipids on the cell membrane to form pores and enter the cell. (3) Generally, the expression of aquaporin (AQP) in tumor cells increases, which is helpful for the transfer of RONS into cells. (4) With the increase of RONS derived from CAP, the antioxidant defense system of tumor cells is overwhelmed, which limits its protective effect on oxidative stress. (5) The increase of intracellular RONS affects intracellular calcium homeostasis. Through the interaction with inositol triphosphate receptor (IP3-RR) and ryanoid receptor (RR), calcium ions flow into the cytoplasm from endoplasmic reticulum (ER), meanwhile, mitochondrial permeability transition pores (mPTP) are opened to make calcium ions flow into mitochondria through mitochondria-associated ER membranes (MAM), resulting in mitochondrial-dependent apoptosis. (6) The increase of intracellular RONS can activate many different mitogen-activated protein kinase (MAPK) cascades, resulting in cell apoptosis. (7) CAP induces DNA and RNA damage in tumor cells, including DNA single-strand or double-strand break (DSB, SSB), DNA-protein crosslinks (DPC), and chemical modification of DNA and RNA bases, resulting in apoptosis, necrosis and senescence. However, DSB may be the result of apoptosis induced by CAP rather than the direct effect of CAP. (8) The mechanism of other active components of CAP such as charged particles, electric field and ultraviolet radiation on tumor cells needs to be further studied. Created by Biorender.

in cancer cells (54, 56). These observations suggest a potential defense mechanism that protects normal cells from exhibiting excessive ROS levels specifically by producing ROS scavenging enzymes and nonenzymes (Figure 2, 4).

Pathways Triggered by CAP Active Compounds

Thus far, we have mainly summarized the oxidative damage mechanism of RONS derived from CAP on cells and discussed selective CAP effects on tumor cells. The active components of CAP are not only derived from RONS; charged particles, ultraviolet radiation and electromagnetic fields also exert effects (57). However, except for the mechanism of oxidative damage induced by RONS in cells, these mechanisms have not been elucidated. Therefore, herein we explore the most direct effects of RONS derived from CAP on cells, the known signaling cascades triggered by RONS, and their effects on cells.

As mentioned earlier, RONS derived from CAP causes lipid peroxidation of the tumor cell membrane, which leads to an increase in active substances, triggering signaling cascades inside and outside the cell. Calcium ions (Ca^{2+}) are important second messengers involved in intracellular and extracellular signaling cascades and play key roles in cell apoptosis and senescence. There is a close association between calcium signaling and ROS signaling (58). One study showed that intracellular Ca^{2+} levels increased after direct and indirect CAP treatment of melanoma cells (59). They observed that CAP-induced Ca^{2+} influx was mainly derived from intracellular Ca^{2+} stores in endoplasmic reticulum (ER) and mitochondria. The specific mechanism was found to be related to the ryanodine receptor in the ER and mitochondrial permeability transition pores (mPTPs), and it was similar to the mechanism leading to increased intracellular Ca^{2+} levels induced by RONS. Notably, RONS regulate the cellular Ca^{2+} channel by modifying the sulfhydryl group of a cysteine residue. Ca^{2+} is released from the ER through ryanodine receptor and inositol 1,4,5-trisphosphate receptor mediation (60, 61), leading to ER stress and mitochondrial Ca^{2+} overload, oxidative stress, membrane depolarization and mPTP opening (62) by releasing cytochrome c (63, 64). RONS induce intramolecular disulfide bond formation mediated by adenine nucleotide translocase, enhancing the sensitivity of mPTP to Ca^{2+} (65). Therefore, increased cytoplasmic Ca^{2+} realized through CAP is likely caused by RONS (59). Some studies have reported mitochondrial oxidation and membrane potential

depolarization after CAP treatment, resulting in mitochondria-mediated apoptosis (55, 66), confirming the accuracy of the aforementioned mechanism (Figure 2, 5)

Moreover, it is clear that ROS can activate many different mitogen-activated protein kinase (MAPK) cascades, including stress kinase, c-Jun N-terminal kinase (JNK) and stress-activated protein kinase (SAPK) pathways (67). Among these kinases, extracellular regulated protein kinases (ERK) 1/2, JNK and p38 kinase have been the most extensively studied (68). Research has shown that plasma-derived RONS can induce the death of tumor cells via apoptosis and other forms of death by activating the ERK1/2, JNK and p38 MAPK signaling pathways (69, 70) (Figure 2, 6).

In addition, the increase in intracellular ROS can induce DNA damage (Figure 2, 7). The DNA damage caused by ROS includes single-strand breaks (SSBs) or double-strand breaks (DSBs) in DNA, oxidative damage, and DNA-protein crosslinking (DPC) (71–73). Some studies have evaluated cancer cell DNA strand breaks caused by CAP treatment by detecting the phosphorylated form of histone H2AX: γ H2AX (70, 74–76). The H2AX histone is a variant of histone H2A in mammalian cells, which has a specific serine glutamine motif in the carboxy terminus (C-terminus). PI3 kinase phosphorylates H2AX to generate γ H2AX, which is the key response to DNA fragmentation (77). Therefore, γ H2AX is considered by many scholars to be an important marker of DNA damage and repair. DSB activates ATM [a DNA damage response kinase in the PI3K-like protein kinase family (78)], which phosphorylates histone H2AX and activates P53-mediated signaling pathways and TP73 (a tumor suppressor protein), leading to apoptosis. Increases in ATM, P53 and TP73 have also been observed in several tumor cells (oral squamous cell carcinoma, lung adenocarcinoma, melanoma, etc.) treated directly or indirectly by CAP (74, 79, 80). In addition, studies have proven that CAP causes DNA strand breaks in cancer cells in a time-dependent manner, and the specific time is related to different CAP-generating devices (75, 81–83). Despite the support offered by the aforementioned studies, some recent studies have suggested that DNA strand breaks may not be direct effects of ROS produced by CAP but results of the cell death induced by CAP (84, 85). For example, Guo et al. studied the effect of CAP on DPC in bacteria, yeast and human cervical cancer cells (71). Plasma-derived RONS, including OH^\cdot , $^1\text{O}_2$, $\text{O}_2^{\cdot-}$ and ONOO^\cdot , reacted with proteins to form protein-free radicals, such as protein-C $^\cdot$, protein-O $^\cdot$ and protein-OO $^\cdot$. Moreover, these protein-free radicals were unstable and reacted quickly with

other functional groups to form alcohols, carbonyl groups and hydroperoxides. These products were converted into protein-free radicals before they reacted with DNA and RNA to form covalent cross-links, resulting in cell death. Moreover, direct irradiation through CAP led to the chemical modification of DNA bases, specifically, the production of 8-oxoguanine (8-oxoG) (86). The 8-oxoG DNA damage is more easily induced than strand breaks. However, due to the upregulation of intracellular DNA repair enzymes, this DNA damage may not be the main cause of cell death (87). Nevertheless, Cheng et al. demonstrated that 8-oxoG oxidative modification of histone mRNA followed by S-phase degradation and chromatin instability in the early stage of the cell cycle was a key mechanism of CAP-induced cell death in breast cancer cell lines (85).

The mechanisms of ROS-induced cell death have been extensively studied by many teams, but little research on the corresponding RNS mechanisms have been reported. As mentioned in the previous section, excessive NO derived from RNS may inhibit tumor formation. NO derived from RNS can interact with superoxide anions derived from NOX, resulting in the formation of nitrous peroxide. After protonation of peroxynitrite through the action of proton pumps located in the cell membrane, the resultant peroxynitrous acid may decompose, resulting in the formation of nitrogen dioxide and apoptosis-inducing hydroxyl radicals. This may cause inactivation of tumor cells. One study showed that long-term exposure of cells to NO and/or peroxynitrite may deplete the intracellular glutathione pool and make mitochondria more vulnerable to the harmful effects of ROS (88). The interaction between RNS and components of the electron transport chain can increase the production of reactive oxygen species in mitochondria, thus triggering the mechanism leading to cell death.

However, a recent study showed that known RONS, such as singlet oxygen, hydrogen peroxide, NO and nitrite/nitrate, are not the main causes of plasma-activated medium (PAM)-mediated selective cell death in the Hep3B and Huh7hepatocellular carcinoma cell lines. The results showed that other factors (such as negatively charged particles) were involved in the physiological effects of CAP and PAM (89). Currently, the effects of other active components produced by CAP (such as free charged particles and electric fields) on tumor cells have not been studied in-depth (Figure 2, 8). How these components change the intracellular environment and how the cellular response and regulatory mechanisms respond to these changes remain unclear. (90) Nevertheless, many studies have reported that nanosecond-pulsed electric fields can lead to contraction and death of tumor cells in cancer tissue (91–93). In summary, the active components of CAP and their specific mechanisms need to be further studied.

MECHANISMS OF CAP EFFECTS ON THE TME

Understanding the effect of CAP on solid tumors, the relationship between CAP and the TME clearly cannot be ignored. The TME is composed of malignant and nonmalignant

cells, tumor blood vessels and the ECM, all of which constantly interact with each other. Nonmalignant cells in the TME are dynamically involved in all stages of carcinogenesis, and they usually promote tumors at these disease stages. These nonmalignant cells include immune cells, endothelial cells, fibroblasts, and adipocytes (94). In addition to cells, the TME also includes ECM components, the most prominent of which are collagen, fibronectin, polysaccharide chain, glycoprotein and proteoglycan (14). Cells and extracellular matrix communicate closely through the dynamic network of soluble factors such as cytokines, chemokines, growth factors, angiogenic factors and enzymes to coordinate uncontrolled cell growth, resistance to cell death, hypoxia tolerance and tumor dysplasia. These interactions are necessary for the formation of new blood vessels and lymphatic vessels, stroma remodeling, recruitment of immune cells and cancer-related fibroblasts, and metastasis (14, 17).

Effects of CAP on Nonmalignant Cells

In cancer, activated fibroblasts (called cancer-associated fibroblasts, CAFs) are thought to play key roles in malignant progression. CAFs promote tumor development by secreting matrix metalloproteinases (MMPs) to initiate ECM remodeling and secrete a variety of cytokines and growth factors (95). A study showed that plasma exerted dual effects on fibroblasts; that is, short-term treatment promoted cell activity and collagen production, and long-term treatment inhibited cell activity and collagen production (96). Higher concentrations of CAP-derived ROS and longer plasma treatment can induce the senescence and necrosis of fibroblasts (97, 98).

The two main types of immune cells in the tumor immune microenvironment (TIME) are tumor-associated macrophages and T lymphocytes. Other cells, including B lymphocytes, natural killer cells (NK cells) and dendritic cells (DCs), are also involved in the immune escape of tumor cells. Recently, many studies have proven the effect of CAP on tumor-associated immune cells, and these studies are described in the following section.

In the process of tumor formation, a tumor-specific vascular system emerges, and the newly formed blood vessels provide oxygen and nutrients to the tumor, thereby supporting tumor progression and providing a channel for tumor cell metastasis (99). Among that of the tumor cells involved in angiogenesis, the role of tumor endothelial cells (TECs) is very important. Vascular endothelial growth factors (VEGFs) secreted by tumor cells loosen tight junctions between endothelial cells (100), resulting in vascular infiltration, and excess TECs, to which other cells associated with normal vascular structures cannot readily adhere (99, 101). The intercellular gaps formed by these mechanisms allow macromolecules and tumor cells to pass freely into growing vessels (94). One study showed that endothelial cells exhibit higher levels of double-strand DNA damage than keratinocytes or fibroblasts after CAP irradiation (102). Moreover, higher levels of ROS derived from CAP can induce cell cycle arrest and decrease cell viability and thus reduce DNA damage in vascular endothelial cells (103). These findings support the supposition that CAP clearance of tumor endothelial cells may help control tumor progression.

Other cells such as adipose-derived stem cells (AMSCs) promote angiogenesis, antiapoptosis, proliferation and pluripotent differentiation, which are usually associated with tumor initiation and metastasis (104). However, to date, research on the effect of plasma on AMSCs in a tumor background is very limited.

Effects of CAP on a Cellular TME Components

In addition to the aforementioned cells, the TME is composed of collagen, elastin, fibronectin, glycoproteins and proteoglycans, collectively referred to as the ECM (14). Due to the overgrowth of tumor cells in the TME, the ECM in tumors usually shows excessive collagen deposition (105). CAP can inhibit tumor progression by oxidizing or destroying the structure of ECM (Figure 2, 1). Two studies on the clinical application of CAP in the treatment of head and neck cancer revealed that connective tissue proliferation induced by CAP after wound treatment indicated an increase in collagen deposition (106, 107). This outcome may be related to the aforementioned effect of CAP on fibroblasts. Another study showed that CAP inhibited the excessive synthesis of collagen in keloid fibroblasts (KFs) (108), and the activated fibroblasts may have similar characteristics with CAFs (109). An *in vitro* study on the effect of CAP on dentin surfaces and extracted type I collagen fibrils showed that CAP can destroy the structure of collagen (110). However, it remains to be seen whether CAP has any effect on the structure of tumor-related collagen fibers. Integrin is an adhesion molecule on the cell surface that plays a vital role in the adhesion, migration and invasion of tumor cells (111). The inhibitory effect of CAP on the adhesion, migration and invasion of tumor cells has been observed. In addition, after CAP treatment, the expression of integrin $\alpha 2$, integrin $\alpha 4$ and focal adhesion kinase (FAK) on the surface of melanoma cells has been found to be inhibited (112). Similarly, another study showed that CAP treatment inhibited the expression of integrin $\beta 1$ and integrin αv in mouse skin cancer cells (113). These outcomes indicate that CAP may inhibit the adhesion, migration and invasion of tumor cells by inhibiting the expression of integrins. In addition, ROS can destroy or oxidize other ECM factors, such as hyaluronic acid (HA, an ECM proteoglycan) and fibronectin (114, 115). However, the effect of CAP on these proteins has not been extensively studied.

Effects of CAP on Cell Communication

Plasma affects the communication between cells and between cells and the ECM. Some untreated cells outside the circumferential area of diffused ROS derived from CAP-treated cells can be damaged by plasma treatment. This outcome can be explained by the bystander effect and the abscopal effect (14). The bystander effect causes CAP-treated cells to transmit signals to untreated neighboring cells to induce biological changes. The effect of CAP on signaling pathways has been reported, and these damage signals can be transmitted through communication junctions [ion channels (59, 116), extracellular vesicles (117–119), gap junctions (120), and connexins (120–122)], occluding junctions [tight junctions (123), claudins

(124), and occludins (124)] and anchoring junctions [adherens (122, 124–126) and desmosomes (127)]. As the current research on the effect of CAP on the malignant cell communication is not sufficient, the cellular communication references mentioned above include the study of malignant cells and non-malignant cells. In their review (14), Privat et al. described in detail the bystander effect mechanism in CAP-treated cells. Moreover, the abscopal effect enables CAP-treated cells to initiate responses in cells far from the treated area; that is, it is a systemic response involving the immune system (128). Plasma has been shown to inhibit the growth of melanoma tumors in distant untreated areas in mice, indicating that plasma therapy affects the immune response (129). The immune-related response induced by CAP therapy applied to tumors is described in the next section.

CAP TRIGGERS ICD AND AFFECTS TUMOR-RELATED IMMUNE CELLS

On the basis of recent research, a new mechanism of CAP-induced tumor cell death has been proposed: CAP causes ICD (130–134). Interestingly, in addition to ICD, plasma can kill tumor cells by directly acting on tumor-related immune cells (Figure 3).

First, we discussed the effect of CAP on tumor-related immune cells. The key participants in the antitumor immune response are antigen-presenting cells (APCs), T cells and natural killer cells (NK cells) (135). Of course, other cells, such as neutrophils, are involved (136). APCs mainly include two kinds of cells, namely, macrophages and DCs. During tumor progression, tumor cells induce tumor-associated macrophages (TAMs) to differentiate into protumor type macrophages (with M2-like polarization), not into proinflammatory type macrophages (with M1-like polarization), which facilitate kill cancer cells. (137, 138) CAP can induce the M1 polarization of THP-1 macrophages derived from monocytes. These macrophages secrete many anti-inflammatory cytokines (IL-1 α , IL-1 β , IL-6, TNF- α , etc.) that kill tumor cells (130, 139). Macrophages activated by CAP showed greater mobility and tumor infiltration ability (130, 133). In addition, M1 polarized macrophages can reduce the migration and invasion ability of cancer cells (139). In the later stage of carcinogenesis, the epithelial-mesenchymal transition (EMT) contributes to many malignant characteristics of cancer cells, including antiapoptotic, migration, invasion and stem cell-like characteristics (140). M1 polarized macrophages may delay the EMT process and increase the expression of E-cadherin in glioma cells *in vitro* and *in vivo*, thus affecting the migration and invasion of glioma cells (139). DCs, which are APCs, play important roles in antigen processing and presentation to T cells, which induces an immune response to the tumor cells. However, because tumor cells release factors that inhibit or reverse the maturation and normal function of DCs, DCs can be transformed into tumor-associated DCs (TIDCs), and adaptive immunity is blocked through a variety of mechanisms (141, 142). In a study of plasma therapy on pancreatic tumors in mice, plasma

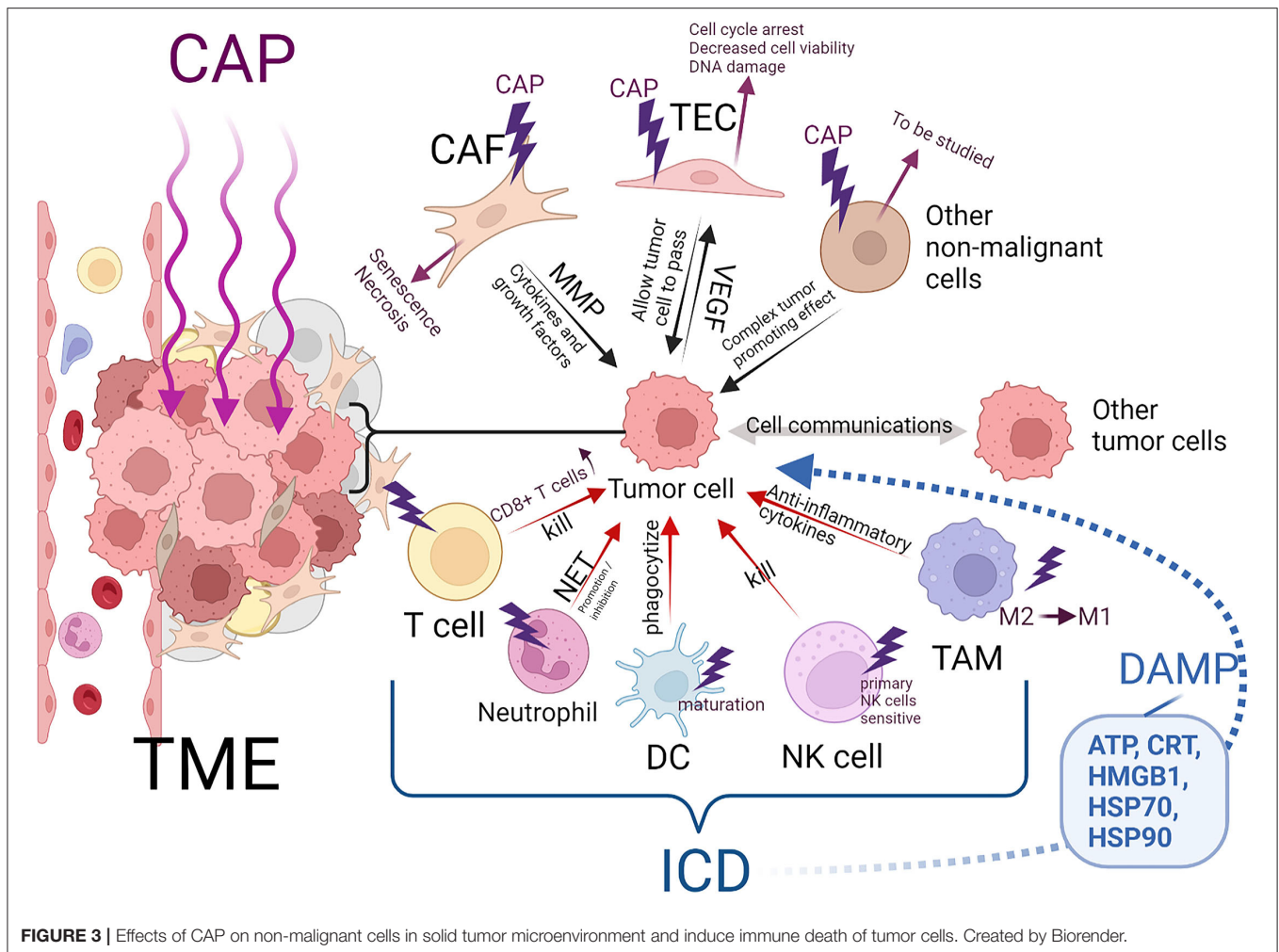


FIGURE 3 | Effects of CAP on non-malignant cells in solid tumor microenvironment and induce immune death of tumor cells. Created by Biorender.

therapy did not affect the number of TIDCs. (143) However, another *in vitro* study showed that DCs were more likely to phagocytize pancreatic tumor cells treated indirectly by plasma because these cells expressed and released damage-associated molecular patterns (DAMPs) that characterize ICD and promote DC maturation (144). Studies on long-term survivors of pancreatic cancer revealed that the patient's T cell bank is key to the fight against cancer (145). A significant increase in T cell and T cell infiltration has been observed in mouse pancreatic tumors exposed to plasma-activated medium (143). Furthermore, CAP-derived RONS can upregulate the expression of major histocompatibility complex-1, benefiting antigen presentation by cancer cells that may lead to an increase in CD8+ T cells in tumors, increasing the rate of tumor cell death (146, 147). Considerable evidence has shown that an increase in neutrophils in peripheral blood and tumors of cancer patients is related to poor clinical results (136). However, only one study on wound healing reported that plasma induced the formation of neutrophil extracellular traps (NETs) and the secretion of IL-8, which may have contributed tumor treatment effects (148). Primary NK cells are as sensitive as adaptive

lymphocytes to plasma therapy, but activated NK cells are not (149).

Additionally, plasma therapy can cause ICD in tumors. ICD is related to the ability of the immune system to induce an effect similar to that of DC-based anticancer vaccines (155). ICD produces several DAMPs, including adenosine triphosphate (ATP), calreticulin (CRT), high mobility group protein B1 (HMGB1), heat shock protein (HSP) 70, and HSP90 (156–159). These molecules are directly exposed on the cell surface or secreted by cells undergoing autophagy, ER stress or ROS-induced oxidative stress (160–163). When plasma irradiates tumor cells, DAMP signals are emitted (132). Extracellular ATP acts as a “find me” DAMP signal, recruiting nearby immune cells and activating them (164). CRT exposed on the surface of the cell plasma membrane (ecto-CRT) is an “eat me” signal and mediates the phagocytosis of tumor cells by APCs (159). ICD has been observed in studies of many tumor cell types, including pancreatic cancer, colorectal cancer, lung cancer and malignant melanoma cells, treated directly or indirectly *in vitro* by plasma (10, 107, 131, 132, 144, 147, 150–154). Lin et al. proposed that the main effective components of plasma-induced ICD are charged

TABLE 1 | The studies of CAP in the treatment of tumors mentioned in the review.

Tumor types	Direct/indirect	Type of study	Plasma source	References
The HNSCC cell lines (JHU-022, JHU-028, JHU-029, SCC25)	Direct	<i>In vitro</i>	Helium-based plasma jet (created by The George Washington University)	(8)
OSC 19 cell lines and FaDu cell lines	Direct	<i>In vitro</i>	MiniFlatPlaSter® (the Max Planck Institute for Extraterrestrial Physics)	(9)
B16F10 murine melanoma cell lines and A375 human melanoma cell lines	Direct/indirect	<i>In vitro</i>	Microsecond-Pulsed DBD Plasma (advanced plasma solutions)	(10)
HuCCCT1 cell lines and EGI-1 cell lines	Direct/indirect	<i>In vitro/in vivo</i> (mice model)	Helium-based plasma jet (laboratory self-made)	(15)
MDA-MB-231, SW480, MCF-7, PC3 and NCF3 cancer cell lines	Direct	<i>In vitro</i>	Argon-based plasma jet kINPen 11 (neoplas, Germany)	(16)
Head and neck squamous cancer	Direct	<i>In vivo</i> (clinical)	Argon-based plasma jet (kINPen MED, neoplas tools GmbH, Germany)	(24)
Murine melanoma cell lines (B-16)	Direct	<i>In vitro/in vivo</i> (mice model)	Elongated flexible CAPJ (laboratory self-made)	(28)
Human gastric adenocarcinoma cell lines (MKN-45, ACC 409)	Indirect	<i>In vitro</i>	'Corona pen' plasma source (laboratory self-made)	(31)
Human hepatoma cancer cell lines (HepG2)	Direct	<i>In vitro</i>	Atmospheric pressure room temperature plasma jet (laboratory self-made)	(54)
Human cancer cell lines glioblastoma (T98G), thyroid carcinoma (SNU80) and oral carcinoma (KB)	Direct	<i>In vitro</i>	Atmospheric pressure non-thermal DBD plasma (laboratory self-made)	(56)
Murine melanoma tumor cell lines (B16F0)	Direct	<i>In vitro</i>	Single-cellular-level sized microplasma jet (laboratory self-made)	(57)
Malignant melanoma cell lines (Mel Juso, Mel Im)	Direct/indirect	<i>In vitro</i>	miniFlatPlaSter (the Max Planck Institute for Extraterrestrial Physics)	(59)
Human cervical cancer HeLa cell lines (ATCC CCL-2) and lung cancer A549 cell lines	Direct	<i>In vitro</i>	Fabricated microplasma jet system (laboratory self-made)	(69)
Glioblastoma (T98G) and lung adenocarcinoma (A549) cell lines	Direct	<i>In vitro</i>	Soft plasma-jet system (laboratory self-made)	(70)
Human oral cavity cancer cell lines (MSK QLL1, SCC1483, SCC15, and SCC25)	Direct	<i>In vitro</i>	Spray-type non-thermal atmospheric plasma system (laboratory self-made)	(74)
Colorectal cancer cells (HCT116)spheroids	Indirect	<i>In vitro</i>	Helium-based plasma jet modified from DBD (laboratory self-made)	(75)
Murine (B16) and human (SK-MEL-28) melanoma cell lines	Direct	<i>In vitro</i>	Argon-based plasma jet kINPen	(76)
Human lung adenocarcinoma (A549) cell lines	Indirect	<i>In vitro</i>	Argon-based plasma jet (laboratory self-made)	(79)
Human melanoma cell lines (Mel007)	Direct	<i>In vitro</i>	Helium-based plasma jet (laboratory self-made)	(80)
Oral cancer cell lines (SCC-25)	Direct	<i>In vitro</i>	Nitrogen-based plasma jet (laboratory self-made)	(81)
Glioma cell lines (LN18, LN229 and U87MG)	Direct	<i>In vitro</i>	Surface Micro Discharge (SMD) plasma device	(82)
Breast cancer cell lines (BT-474, SK-BR-3, MCF-7 and MDA-MB-231)	Direct	<i>In vitro</i>	Canady Helios Cold Plasma™ (CHCP)	(85)
Human hepatoma cell lines (Hep3B and Huh7)	Indirect	<i>In vitro</i>	s-DBD device (laboratory self-made)	(89)
Locally advanced cancer of the oropharynx (pT4)	Direct	<i>In vivo</i> (clinical)	Argon-based plasma jet (kINPen MED)	(106)
Human pancreatic adenocarcinoma cell lines (Colo-357, PaTu8988T) and murine pancreatic cancer cell lines (6606PDA)	Direct	<i>In vitro/in vivo</i> (mice model)	Argon-based plasma jet (kINPen 09)	(118)
Human ovarian cancer cell lines (OVCAR-3 and SKOV-3)	Direct	<i>In vitro</i>	Argon-based plasma jet kINPen	(119)
Murine melanoma tumor cell lines (B16F10)	Direct	<i>In vivo</i> (mice model)	Nanosecond pulsed streamer discharge (laboratory self-made)	(129)

(Continued)

TABLE 1 | Continued

Tumor types	Direct/indirect	Type of study	Plasma source	References
Human glioblastoma multiforme (T98G) and lung adenocarcinoma (A549) cell lines	Direct	<i>In vitro</i>	μ -DBD plasma device (laboratory self-made)	(130)
Human nasopharyngeal carcinoma (CNE-1) cell lines	Direct	<i>In vitro</i>	Nanosecond pulsed DBD plasma (laboratory self-made)	(131)
Human lung adenocarcinoma (A549) cell lines	Direct	<i>In vitro</i>	Nanosecond pulsed DBD plasma (laboratory self-made)	(132)
Human astrocytoma (U251MG and U87MG) cells spheroids	Direct	<i>In vitro/in vivo</i> (mice model)	μ -DBD plasma device (laboratory self-made)	(139)
Murine pancreatic cancer cell lines (6606PDA)	Indirect	<i>In vivo</i> (mice model)	Argon-based plasma jet (kINPen MED)	(143)
Human pancreatic cancer cell lines (MIA-Paca-2, PANC-1, BxPC3, and Capan-2)	Indirect	<i>In vitro</i>	Argon-based plasma jet (kINPen MED)	(144)
Murine melanoma tumor cell lines (B16F10)	Direct	<i>In vitro</i>	Argon-based plasma jet (kINPen 11)	(147, 150)
Murine colon carcinoma (CT26, MC38) and pancreatic cancer (6606PDA) cells spheroids	Indirect	<i>In vitro/in vivo</i> (mice model)	Argon-based plasma jet (kINPen)	(151)
Murine colon carcinoma (CT26) cell lines	Direct	<i>In vitro/in vivo</i> (mice model)	Nanosecond pulsed DBD plasma (laboratory self-made)	(152)
Human PDAC (PANC-1) and melanoma (Hmel1 MM, HBL MM) cell lines	Indirect	<i>In vitro</i>	PetriPlas source (designed at INP)	(153)
Murine colon carcinoma (CT26) cell lines	Direct	<i>In vitro</i>	Argon-based plasma jet (kINPen)	(154)

and/or short-lived ROS, including $1O_2$, $\bullet OH$ and $O_2\bullet^-$ (10, 132). Nevertheless, other active CAP components and the specific mechanism by which they induce ICD need to be studied further (Table 1).

CONCLUSIONS

We reviewed the currently known mechanisms of CAP effects on solid tumors. First, we introduced the currently used plasma treatment methods in tumors. Then, we analyzed the active components of CAP, including free charged particles, ROS and reactive nitrogen free radicals, ultraviolet radiation and electric fields, and reviewed the selectivity of RONS, the main active components of CAP, with respect to tumor cells and the mechanisms associated with oxidative damage. The selectivity of the CAP effects on tumor cells is mainly reflected by the following observations: 1. ROS produced by plasma can oxidize the plasma membrane, and the low cholesterol content in the tumor cell membrane increases tumor cell membrane permeability. 2. The high levels of AQPs in the tumor cell membrane makes absorption of ROS by tumor cells easier. 3. CAP treatment inactivates the antioxidant defense system in tumor cells. The following mechanisms of plasma-derived ROS-induced oxidative damage in cells have been elucidated to date: 1. Increased intracellular calcium signals and mitochondrial calcium overload cause ER stress, inducing mitochondrial-mediated apoptosis; 2. activation of different MAPK signaling cascades induces apoptosis; and 3. RNS and ROS may exert a synergistic effect in damaging DNA and RNA in cells. Next, we described the important role of CAP in nonmalignant cells and the ECM in the TME. In addition, the role of CAP in tumor immunity cannot be ignored. CAP destroys tumors by activating tumor immune cells and inducing ICD in tumors.

To sum up, CAP has many effects on solid tumors, and these effects are dose-dependent. The effects of optimal dose CAP on solid tumors are mainly inhibition. (The optimal dose cannot be determined because there is no standardized CAP equipment). These effects include killing tumor cells, inhibiting non-malignant cells and ECM in TME, affecting the communication between tumor cells, and inducing immunogenic death of tumor cells.

Currently, the mechanisms of CAP treatment effects on solid tumor are still largely unclear, and the recent research has been limited mainly studying the oxidative stress response induced by the RONS produced by CAP in tumor and related cells. However, one study showed that known RONS may not be the main components involved in the killing effect of CAP on tumors (89); therefore, studying other active components of CAP (such as charged particles) is critical. Currently, 3D models of TME components (such as spheroids, organoids, scaffolds, tumor-on-a-chip and 3D bioprinted tumors) can be used to simulate solid tumors *in vitro* and thereby determine the effect of CAP on solid tumors. In addition, the combination of plasma and nanoparticles (NPs) is a positive research direction (165). NPs have shown great potential for local binding with the RONS produced by CAP (166), and CAP enhances NP delivery and increases RONS levels in target tissue (167–169). Although many teams have explored these aspects of CAP treatment, the clinical application of this combination therapy needs to be further studied.

AUTHOR CONTRIBUTIONS

TM, XX, CD, and HZ were the major contributors in writing the manuscript. TM drafted the main part of the manuscript.

XX contributed to literature retrieval and manuscript revision. KR contributed to the collection and collation of documents. TS revised the content of tumor microenvironment. HW revised the content of tumor immunity. CD and HZ proposed different amendments to the manuscript and standardizes the format of the paper. All authors read and approved the final manuscript.

FUNDING

This review was supported by the Natural Science Basic Research Program of Shaanxi (Program No. 2019JQ-948). The funding body had no role in the design of the study and collection, analysis, and interpretation of data and in writing the manuscript.

REFERENCES

- Terrasse V. Latest global cancer data: Cancer burden rises to 19.3 million new cases and 10.0 million cancer deaths in (2020). In *IARC*. (2020).
- Hodi FS, O'Day SJ, McDermott DF, Weber RW, Sosman JA, Haanen JB, et al. Improved survival with ipilimumab in patients with metastatic melanoma. *N Engl J Med*. (2010) 363:711–23. doi: 10.1056/NEJMoa1003466
- Hamid O, Robert C, Daud A, Hodi FS, Hwu W-J, Kefford R, et al. Safety and tumor responses with lambrolizumab (anti-PD-1) in melanoma. *N Engl J Med*. (2013) 369:134–44. doi: 10.1056/NEJMoa1305133
- Kanani A, Veen T, Soreide K: Neoadjuvant immunotherapy in primary and metastatic colorectal cancer. *Br J Surgery*. (2021) 108:1417–25. doi: 10.1093/bjs/znab342
- Iwai Y, Hamanishi J, Chamoto K, Honjo T. Cancer immunotherapies targeting the PD-1 signaling pathway. *J Biomed Sci*. (2017) 24:26–26. doi: 10.1186/s12929-017-0329-9
- Pan S, Zhan Y, Chen X, Wu B, Liu B. Bladder Cancer Exhibiting High Immune Infiltration Shows the Lowest Response Rate to Immune Checkpoint Inhibitors. *Front Oncol*. (2019) 9:1101. doi: 10.3389/fonc.2019.01101
- Kowanetz M, Zou W, Gettinger SN, Koeppen H, Kockx M, Schmid P, et al. Differential regulation of PD-L1 expression by immune and tumor cells in NSCLC and the response to treatment with atezolizumab (anti-PD-L1). *Proc Natl Acad Sci U S A*. (2018) 115:E10119–26. doi: 10.1073/pnas.1802166115
- Guerrero-Preston R, Ogawa T, Uemura M, Shumulinsky G, Valle B, Pirini F, et al. Trink BJJomm: cold atmospheric plasma treatment selectively targets head and neck squamous cell carcinoma cells. *Int J Mol Med*. (2014) 34:941–6. doi: 10.3892/ijmm.2014.1849
- Welz C, Emmert S, Canis M, Becker S, Baumeister P, Shimizu T, et al. Cold atmospheric plasma: a promising complementary therapy for squamous head and neck cancer. *Plos ONE*. (2015) 10:e0141827. doi: 10.1371/journal.pone.0141827
- Lin A, Gorbanev Y, De Backer J, Van Loenhout J, Van Boxem W, Lemièrre F, et al. Non-thermal plasma as a unique delivery system of short-lived reactive oxygen and nitrogen species for immunogenic cell death in melanoma cells. *Adv Sci*. (2019) 6:1802062. doi: 10.1002/adv.201802062
- Tanaka H, Bekeschus S, Yan D, Hori M, Keidar M, Laroussi MJC. Plasma-treated solutions (PTS) in cancer therapy. *Cancers*. (2021) 13. doi: 10.3390/cancers13071737
- Rehman M, Jawaid P, Uchiyama H, Kondo TJAob. Comparison of free radicals formation induced by cold atmospheric plasma, ultrasound, and ionizing radiation. *Arch Biochem Biophys*. (2016) 605:19–25. doi: 10.1016/j.abb.2016.04.005
- Gorbanev Y, O'Connell D, Chechik VJC. Non-thermal plasma in contact with water: the origin of species. *Chemistry*. (2016) 22:3496–505. doi: 10.1002/chem.201503771
- Privat-Maldonado A, Bengtson C, Razzokov J, Smits E, Bogaerts A. Modifying the tumour microenvironment: challenges and future perspectives for anticancer plasma treatments. *Cancers*. (2019) 11. doi: 10.3390/cancers11121920
- Vaquero J, Judée F, Vallette M, Decauchy H, Arbelaz A, Aoudjehane L, et al. Cold-Atmospheric Plasma Induces Tumor Cell Death in Preclinical In Vivo and In Vitro Models of Human Cholangiocarcinoma. *Cancers*. (2020) 12. doi: 10.3390/cancers12051280
- Bekeschus S, Lippert M, Diepold K, Chiosis G, Seufferlein T, Azoitei N. Physical plasma-triggered ROS induces tumor cell death upon cleavage of HSP90 chaperone. *Sci Rep*. (2019) 9:4112. doi: 10.1038/s41598-019-38580-0
- Roma-Rodrigues C, Mendes R, Baptista PV, Fernandes AR. Targeting tumor microenvironment for cancer therapy. *Int J Mol Sci*. (2019) 20:840. doi: 10.3390/ijms20040840
- Motaln H, Recek N, Rogelj B. Intracellular responses triggered by cold atmospheric plasma and plasma-activated media in cancer cells. *Molecules (Basel, Switzerland)*. (2021) 26. doi: 10.3390/molecules26051336
- Bernhardt T, Semmler ML, Schäfer M, Bekeschus S, Emmert S, Boeckmann L. Plasma medicine: applications of cold atmospheric pressure plasma in dermatology. *Oxid Med Cell Longev*. (2019) 2019:3873928. doi: 10.1155/2019/3873928
- Yan D, Sherman JH, Keidar M. Cold atmospheric plasma, a novel promising anti-cancer treatment modality. *Oncotarget*. (2017) 8:15977–95. doi: 10.18632/oncotarget.13304
- DIN SPEC 91315: General Requirements for Plasma Sources in Medicine*. Beuth Publishing (2014).
- Hahn V, Brandenburg R, von Woedtke T. DIN SPEC 91315: a First Attempt to Implement Mandatory Test Protocols for the Characterization of Plasma Medical Devices. In: Metelmann H-R, von Woedtke T, Weltmann K-D, editor. *Comprehensive Clinical Plasma Medicine: Cold Physical Plasma for Medical Application*. Cham: Springer International Publishing. (2018) p. 511–516.
- Isbary G, Shimizu T, Zimmermann JL, Heinlin J, Al-Zaabi S, Rechfeld M, et al. Randomized placebo-controlled clinical trial showed cold atmospheric argon plasma relieved acute pain and accelerated healing in herpes zoster. *Clinical Plasma Medicine*. (2014) 2:50–5. doi: 10.1016/j.cpme.2014.07.001
- Schuster M, Seebauer C, Rutkowski R, Hauschild A, Podmelle F, Metelmann C, et al. Visible tumor surface response to physical plasma and apoptotic cell kill in head and neck cancer. *J Cranio-Maxillofacial Surgery*. (2016) 44:1445–52. doi: 10.1016/j.jcms.2016.07.001
- Metelmann H-R, Seebauer C, Rutkowski R, Schuster M, Bekeschus S, Metelmann P. Treating cancer with cold physical plasma: On the way to evidence-based medicine. *Contri Plasma Phy*. (2018) 58:415–9. doi: 10.1002/ctpp.201700085
- Duarte S, Panariello BHD. Comprehensive biomedical applications of low temperature plasmas. *Arch Biochem Biophys*. (2020) 693:108560. doi: 10.1016/j.abb.2020.108560
- Wende K, Woedtke Tv, Weltmann K-D, Bekeschus S: Chemistry and biochemistry of cold physical plasma derived reactive species in liquids. *Biol Chem*. (2019) 400:19–38. doi: 10.1515/hsz-2018-0242
- Binenbaum Y, Ben-David G, Gil Z, Slutsker YZ, Ryzhkov MA, Felsteiner J, et al. Cold Atmospheric Plasma, Created at the Tip of an Elongated Flexible Capillary Using Low Electric Current, Can Slow the Progression of Melanoma. *PLoS ONE*. (2017) 12:e0169457. doi: 10.1371/journal.pone.0169457
- Robert E, Barbosa E, Dozias S, Vandamme M, Cachoncinlle C, Viladrosa R, et al. Experimental study of a compact nanosecond plasma gun. (2009). 6:795–802. doi: 10.1002/ppap.200900078
- Bauer G. Intercellular singlet oxygen-mediated bystander signaling triggered by long-lived species of cold atmospheric plasma and plasma-activated medium. *Redox Biol*. (2019) 26:101301. doi: 10.1016/j.redox.2019.101301
- Bauer G, Sersenová D, Graves DB, Machala Z. Dynamics of singlet oxygen-triggered, rons-based apoptosis induction after treatment of tumor cells with cold atmospheric plasma or plasma-activated medium. *Sci Rep*. (2019) 9:13931. doi: 10.1038/s41598-019-50329-3
- Salimian Rizi B, Achreja A, Nagrath D. Nitric oxide: the forgotten child of tumor metabolism. *Trends in Cancer*. (2017) 3:659–72. doi: 10.1016/j.trecan.2017.07.005

33. Nastasa V, Pasca A-S, Malancus R-N, Bostanaru A-C, Ailincai L-I, Ursu E-L, et al. Toxicity assessment of long-term exposure to non-thermal plasma activated water in mice. *Int J Mol Sci.* (2021) 22. doi: 10.3390/ijms222111534
34. Xu D, Cui Q, Xu Y, Wang B, Tian M, Li Q, et al. Systemic study on the safety of immuno-deficient nude mice treated by atmospheric plasma-activated water. *Plasma Sci Technol.* (2018) 20:044003. doi: 10.1088/2058-6272/aa9842
35. Xu Y, Peng S, Li B, Wang S, Zhang H, Li Q, et al. Systematic Safety Evaluation of Cold Plasma-Activated Liquid in Rabbits. *Front Phys.* (2021) 9:481.
36. Hirst AM, Frame FM, Arya M, Maitland NJ, O'Connell D. Low temperature plasmas as emerging cancer therapeutics: the state of play and thoughts for the future. *Tumor Biol.* (2016) 37:7021–31. doi: 10.1007/s13277-016-4911-7
37. Mitra S, Nguyen LN, Akter M, Park G, Choi EH, Kaushik NK. Impact of ROS generated by chemical, physical, and plasma techniques on cancer attenuation. *Cancers (Basel).* (2019) 11:1030.
38. Semmler ML, Bekeschus S, Schäfer M, Bernhardt T, Fischer T, Witzke K, et al. Molecular mechanisms of the efficacy of cold atmospheric pressure plasma (CAP) in cancer treatment. *Cancers (Basel).* (2020) 12:269. doi: 10.3390/cancers12020269
39. Reuter S, von Woedtke T, Weltmann K-D. The kINPen—a review on physics and chemistry of the atmospheric pressure plasma jet and its applications. *J Phys D Appl Phys.* (2018) 51:233001. doi: 10.1088/1361-6463/aab3ad
40. Privat-Maldonado A, Schmidt A, Lin A, Weltmann K-D, Wende K, Bogaerts A, et al. ROS from physical plasmas: redox chemistry for biomedical therapy. *Oxid Med Cell Longev.* (2019) 2019:9062098. doi: 10.1155/2019/9062098
41. Dezest M, Chavatte L, Bourdens M, Quinton D, Camus M, Garrigues L, et al. Mechanistic insights into the impact of cold atmospheric pressure plasma on human epithelial cell lines. *Sci Rep.* (2017) 7:41163. doi: 10.1038/srep41163
42. Sies H. Strategies of antioxidant defense. *Eur J Biochem.* (1993). 215(2):213–9. doi: 10.1111/j.1432-1033.1993.tb18025.x
43. Bauer G. The synergistic effect between hydrogen peroxide and nitrite, two long-lived molecular species from cold atmospheric plasma, triggers tumor cells to induce their own cell death. *Redox Biol.* (2019) 26:101291. doi: 10.1016/j.redox.2019.101291
44. Trachootham D, Alexandre J, Huang P. Targeting cancer cells by ROS-mediated mechanisms: a radical therapeutic approach? *Nature Reviews Drug Dis.* (2009) 8:579–91. doi: 10.1038/nrd2803
45. Yan D, Talbot A, Nourmohammadi N, Sherman JH, Cheng X, Keidar M. Toward understanding the selective anticancer capacity of cold atmospheric plasma—a model based on aquaporins (Review). *Biointerphases.* (2015) 10:040801. doi: 10.1116/1.4938020
46. Chiu SW, Jakobsson E, Mashl RJ, Scott HL. Cholesterol-induced modifications in lipid bilayers: a Simulation Study. *Biophys J.* (2002) 83:1842–53. doi: 10.1016/S0006-3495(02)73949-0
47. Van der Paal J, Neyts EC, Verlaet CCW, Bogaerts A. Effect of lipid peroxidation on membrane permeability of cancer and normal cells subjected to oxidative stress. *Chem Sci.* (2016) 7:489–98. doi: 10.1039/c5sc02311d
48. Van der Paal J, Verheyen C, Neyts EC, Bogaerts A. Hampering effect of cholesterol on the permeation of reactive oxygen species through phospholipids bilayer: possible explanation for plasma cancer selectivity. *Sci Rep.* (2017) 7:39526. doi: 10.1038/srep39526
49. Murata K, Mitsuoka K, Hirai T, Walz T, Agre P, Heymann JB, et al. Structural determinants of water permeation through aquaporin-1. *Nature.* (2000) 407:599–605. doi: 10.1038/35036519
50. Wu B, Beitz E. Aquaporins with selectivity for unconventional permeants. *Cell Mol Life Sci.* (2007) 64:2413–21. doi: 10.1007/s00018-007-7163-2
51. Almasalmeh A, Krenč D, Wu B, Beitz E. Structural determinants of the hydrogen peroxide permeability of aquaporins. *FEBS J.* (2014) 281:647–56. doi: 10.1111/febs.12653
52. Bienert GP, Chaumont F. Aquaporin-facilitated transmembrane diffusion of hydrogen peroxide. *Biochimica et Biophysica Acta (BBA) - General Subjects.* (2014) 1840:1596–604. doi: 10.1016/j.bbagen.2013.09.017
53. Yusupov M, Yan D, Cordeiro RM, Bogaerts A. Atomic scale simulation of H₂O₂ permeation through aquaporin: toward the understanding of plasma cancer treatment. *J Phys D Appl Phys.* (2018) 51:125401. doi: 10.1088/1361-6463/aaae7a
54. Zhao S, Xiong Z, Mao X, Meng D, Lei Q, Li Y, et al. Atmospheric pressure room temperature plasma jets facilitate oxidative and nitrate stress and lead to endoplasmic reticulum stress dependent apoptosis in HepG2 cells. *PLoS ONE.* (2013) 8:e73665. doi: 10.1371/journal.pone.0073665
55. Bekeschus S, von Woedtke T, Kramer A, Weltmann K-D, Masur K. Cold physical plasma treatment alters redox balance in human immune cells. *Plasma Med.* (2013) 3:267–78. doi: 10.1615/PlasmaMed.2014011972
56. Kaushik NK, Kaushik N, Park D, Choi EH. Altered antioxidant system stimulates dielectric barrier discharge plasma-induced cell death for solid tumor cell treatment. *PLoS ONE.* (2014) 9:e103349. doi: 10.1371/journal.pone.0103349
57. Kim JY, Wei Y, Li J, Kim SO. 15- μ m-sized single-cellular-level and cell-manipulatable microplasma jet in cancer therapies. *Biosens Bioelectron.* (2010) 26:555–9. doi: 10.1016/j.bios.2010.07.043
58. Görlach A, Bertram K, Hudecova S, Krizanova O. Calcium and ROS: A mutual interplay. *Redox Biol.* (2015) 6:260–71. doi: 10.1016/j.redox.2015.08.010
59. Schneider C, Gebhardt L, Arndt S, Karrer S, Zimmermann JL, Fischer MJM, et al. Cold atmospheric plasma causes a calcium influx in melanoma cells triggering CAP-induced senescence. *Sci Rep.* (2018) 8:10048. doi: 10.1038/s41598-018-28443-5
60. Xu L, Eu JP, Meissner G, Stamler JS. Activation of the cardiac calcium release channel (ryanodine receptor) by poly-S-nitrosylation. *Science (New York, NY).* (1998) 279:234–7. doi: 10.1126/science.279.5348.234
61. Zheng Y, Shen X. H₂O₂ directly activates inositol 1,4,5-trisphosphate receptors in endothelial cells. *Redox Rep.* (2005) 10:29–36. doi: 10.1179/135100005x21660
62. Halestrap AP. What is the mitochondrial permeability transition pore? *J Mol Cell Cardiol.* (2009) 46:821–31. doi: 10.1016/j.yjmcc.2009.02.021
63. Andreyev A, Fiskum G. Calcium induced release of mitochondrial cytochrome c by different mechanisms selective for brain versus liver. *Cell Death & Differentiation.* (1999) 6:825–32. doi: 10.1038/sj.cdd.4400565
64. Raturi A, Simmen T. Where the endoplasmic reticulum and the mitochondrion tie the knot: The mitochondria-associated membrane (MAM). *Biochimica et Biophysica Acta (BBA) - Molecular Cell Research.* (2013) 1833:213–24. doi: 10.1016/j.bbamcr.2012.04.013
65. McStay GP, Clarke SJ, Halestrap AP. Role of critical thiol groups on the matrix surface of the adenine nucleotide translocase in the mechanism of the mitochondrial permeability transition pore. *Biochem J.* (2002) 367:541–8. doi: 10.1042/bj20011672
66. Ahn H, Kim K, Kim G, Moon E, Yang S, Lee JJ. Atmospheric-pressure plasma jet induces apoptosis involving mitochondria via generation of free radicals. *PLoS ONE.* (2011). 6(11):e28154. doi: 10.1371/journal.pone.0028154
67. Bae YS, Oh H, Rhee SG, Yoo YD. Regulation of reactive oxygen species generation in cell signaling. *Mol Cells.* (2011) 32:491–509. doi: 10.1007/s10059-011-0276-3
68. Roux PP, Blenis J. ERK and p38 MAPK-activated protein kinases: a family of protein kinases with diverse biological functions. *Microbiology and molecular biology reviews: MMBR.* (2004) 68:320–44. doi: 10.1128/mmb.68.2.320-344.2004
69. Ahn H, Kim K, Hoan N, Kim C, Moon E, Choi K, Yang S, Lee JJPo. Targeting cancer cells with reactive oxygen and nitrogen species generated by atmospheric-pressure air plasma. (2014) 9:e86173. doi: 10.1371/journal.pone.0086173
70. Kaushik N, Uddin N, Sim GB, Hong YJ, Baik KY, Kim CH, et al. Responses of solid tumor cells in DMEM to reactive oxygen species generated by non-thermal plasma and chemically induced ROS systems. *Sci Rep.* (2015) 5:8587. doi: 10.1038/srep08587
71. Guo L, Zhao Y, Liu D, Liu Z, Chen C, Xu R, et al. Cold atmospheric-pressure plasma induces DNA–protein crosslinks through protein oxidation. *Free Radic Res.* (2018) 52:783–98. doi: 10.1080/10715762.2018.1471476
72. Han X, Cantrell WA, Escobar EE, Ptasinska S. Plasmid DNA damage induced by helium atmospheric pressure plasma jet. *Eur Phys J.* (2014) 68:46. doi: 10.1140/epjd/e2014-40753-y
73. Ptasinska S, Bahnev B, Stypczyńska A, Bowden M, Mason NJ, Braithwaite NSJ. DNA strand scission induced by a non-thermal atmospheric pressure plasma jet. *Phys Chem Chem Phys.* (2010) 12:7779–81. doi: 10.1039/C001188F
74. Chang JW, Kang SU, Shin YS, Kim KI, Seo SJ, Yang SS, et al. Non-thermal atmospheric pressure plasma induces apoptosis in oral cavity

- squamous cell carcinoma: Involvement of DNA-damage-triggering sub-G1 arrest via the ATM/p53 pathway. *Arch Biochem Biophys.* (2014) 545:133–40. doi: 10.1016/j.abb.2014.01.022
75. Judée F, Fongia C, Ducommun B, Yousfi M, Lobjois V, Merbahi N. Short and long time effects of low temperature Plasma Activated Media on 3D multicellular tumor spheroids. *Sci Rep.* (2016) 6:21421. doi: 10.1038/srep21421
 76. Sagwal SK, Pasqual-Melo G, Bodnar Y, Gandhirajan RK, Bekeschus S. Combination of chemotherapy and physical plasma elicits melanoma cell death via upregulation of SLC22A16. *Cell Death Dis.* (2018) 9:1179. doi: 10.1038/s41419-018-1221-6
 77. Rahmanian N, Shokrzadeh M, Eskandani M. Recent advances in γ H2AX biomarker-based genotoxicity assays: A marker of DNA damage and repair. *DNA Repair.* (2021) 108:103243. doi: 10.1016/j.dnarep.2021.103243
 78. Matt S, Hofmann TG. The DNA damage-induced cell death response: a roadmap to kill cancer cells. *CMLS.* (2016) 73:2829–50. doi: 10.1007/s00018-016-2130-4
 79. Hara H, Kobayashi M, Shiiba M, Kamiya T, Adachi T. Sublethal treatment with plasma-activated medium induces senescence-like growth arrest of A549 cells: involvement of intracellular mobile zinc. *J Clin Biochem Nutr.* (2019) 65:16–22. doi: 10.3164/jcbn.19-17
 80. Ishaq M, Bazaka K, Ostrikov K. Intracellular effects of atmospheric-pressure plasmas on melanoma cancer cells. *Phys Plasmas.* (2015) 22:122003. doi: 10.1063/1.4933366
 81. Han X, Klas M, Liu Y, Stack MS, Ptasinska S. DNA damage in oral cancer cells induced by nitrogen atmospheric pressure plasma jets. *Appl Phys Lett.* (2013) 102:233703. doi: 10.1063/1.4809830
 82. Körtzler J, Boxhammer V, Schäfer A, Shimizu T, Klämpfl TG, Li YF, Welz C, et al. Restoration of sensitivity in chemo-resistant glioma cells by cold atmospheric plasma. *PLoS ONE.* (2013) 8:e64498. doi: 10.1371/journal.pone.0064498
 83. Kim GJ, Kim W, Kim KT, Lee JK. DNA damage and mitochondria dysfunction in cell apoptosis induced by nonthermal air plasma. *Appl Phys Lett.* (2010) 96:021502. doi: 10.1063/1.3292206
 84. Bekeschus S, Schütz CS, Niefner F, Wende K, Weltmann K-D, Gelbrich N, et al. Elevated H2AX phosphorylation observed with kINPen plasma treatment is not caused by ROS-mediated DNA damage but is the consequence of apoptosis. *Oxid Med Cell Longev.* (2019) 2019:8535163. doi: 10.1155/2019/8535163
 85. Cheng X, Murthy SRK, Zhuang T, Ly L, Jones O, Basadonna G, et al. Canady helios cold plasma induces breast cancer cell death by oxidation of histone mRNA. *Int J Mol Sci.* (2021). 22(17):9578. doi: 10.3390/ijms22179578
 86. Okazaki Y, Wang Y, Tanaka H, Mizuno M, Nakamura K, Kajiyama H, et al. Direct exposure of non-equilibrium atmospheric pressure plasma confers simultaneous oxidative and ultraviolet modifications in biomolecules. *J Clin Biochem Nutr.* (2014) 55:207–15. doi: 10.3164/jcbn.14-40
 87. Kurita H, Haruta N, Uchihashi Y, Seto T, Takashima K. Strand breaks and chemical modification of intracellular DNA induced by cold atmospheric pressure plasma irradiation. *PLoS ONE.* (2020) 15:e0232724. doi: 10.1371/journal.pone.0232724
 88. Moncada S, Erusalimsky JJ. Does nitric oxide modulate mitochondrial energy generation and apoptosis? *Mol Cell Biol.* (2002) 3:214–20. doi: 10.1038/nrm762
 89. Li Y, Tang T, Lee H, Song K. Cold atmospheric pressure plasma-activated medium induces selective cell death in human hepatocellular carcinoma cells independently of singlet oxygen, hydrogen peroxide, nitric oxide and nitrite/nitrate. *Int J Mol Sci.* (2021) 22:5548. doi: 10.3390/ijms22115548
 90. Yang Q, Kajimoto S, Kobayashi Y, Hiramatsu H, Nakabayashi T. Regulation of cell volume by nanosecond pulsed electric fields. *J Phys Chem.* (2021). doi: 10.1021/acs.jpcc.1c06058
 91. Liu H, Zhao Y, Yao C, Schmelz E, Devalos R. Differential effects of nanosecond pulsed electric fields on cells representing progressive ovarian cancer. (2021) 142:107942. doi: 10.1016/j.bioelechem.2021.107942
 92. Gu Y, Zhang L, Yang H, Zhuang J, Sun Z, Guo J, Guan MJB. Nanosecond pulsed electric fields impair viability and mucin expression in mucinous colorectal carcinoma cell. *Bioelectrochemistry.* (2021). 141:107844. doi: 10.1016/j.bioelechem.2021.107844
 93. Carr L, Golzio M, Orlacchio R, Alberola G, Kolosnjaj-Tabi J, Leveque P, et al. A nanosecond pulsed electric field (nsPEF) can affect membrane permeabilization and cellular viability in a 3D spheroids tumor model. *Bioelectrochemistry.* (2021) 141:107839. doi: 10.1016/j.bioelechem.2021.107839
 94. Balkwill FR, Capasso M, Hagemann T. The tumor microenvironment at a glance. *J Cell Sci.* (2012) 125:5591–6. doi: 10.1242/jcs.116392 %J Journal of Cell Science
 95. Denton AE, Roberts EW, Fearon DT. Stromal Cells in the Tumor Microenvironment. In: Owens BMJ, Lakin MA. *Stromal Immunology.* Cham: Springer International Publishing. (2018) p. 99–114.
 96. Shi X, Cai J, Xu G, Ren H, Chen S, Chang Z, et al. Effect of cold plasma on cell viability and collagen synthesis in cultured murine fibroblasts. *Plasma Sci Technol.* (2016) 18:353–9. doi: 10.1088/1009-0630/18/4/04
 97. Bourdens M, Jeanson Y, Taurand M, Juin N, Carrière A, Clément F, et al. Short exposure to cold atmospheric plasma induces senescence in human skin fibroblasts and adipose mesenchymal stromal cells. *Sci Rep.* (2019) 9:8671. doi: 10.1038/s41598-019-45191-2
 98. Virard F, Cousty S, Cambus J, Valentin A, Kémoun P, Clément FJ. Cold atmospheric plasma induces a predominantly necrotic cell death via the microenvironment. *Plos ONE.* (2015) 10:e0133120. doi: 10.1371/journal.pone.0133120
 99. Hida K, Maishi N, Annan DA, Hida Y. Contribution of tumor endothelial cells in cancer progression. *Int J Mol Sci.* (2018) 19:1272. doi: 10.3390/ijms19051272
 100. Gavard J, Gutkind JS. VEGF controls endothelial-cell permeability by promoting the beta-arrestin-dependent endocytosis of VE-cadherin. *Nat Cell Biol.* (2006) 8:1223–34. doi: 10.1038/ncb1486
 101. Chang YS, di Tomaso E, McDonald DM, Jones R, Jain RK, Munn LL. Mosaic blood vessels in tumors: frequency of cancer cells in contact with flowing blood. *Proc Natl Acad Sci U S A.* (2000) 97:14608–13. doi: 10.1073/pnas.97.26.14608
 102. Arndt S, Unger P, Berneburg M, Bosserhoff AK, Karrer S. Cold atmospheric plasma (CAP) activates angiogenesis-related molecules in skin keratinocytes, fibroblasts and endothelial cells and improves wound angiogenesis in an autocrine and paracrine mode. *J Dermatol Sci.* (2018) 89:181–90. doi: 10.1016/j.jdermsci.2017.11.008
 103. Gweon B, Kim H, Kim K, Kim M, Shim E, Kim S, et al. Suppression of angiogenesis by atmospheric pressure plasma in human aortic endothelial cells. *Appl Phys Lett.* (2014). 104(13):133701. doi: 10.1063/1.4870623
 104. Chen Y, He Y, Wang X, Lu F, Gao J. Adipose-derived mesenchymal stem cells exhibit tumor tropism and promote tumorsphere formation of breast cancer cells. *Oncol Rep.* (2019) 41:2126–36. doi: 10.3892/or.2019.7018
 105. Handorf AM, Zhou Y, Halanski MA, Li W-J. Tissue stiffness dictates development, homeostasis, and disease progression. *Organogenesis.* (2015) 11:1–15. doi: 10.1080/15476278.2015.1019687
 106. Metelmann H-R, Seebauer C, Miller V, Fridman A, Bauer G, Graves DB, et al. Clinical experience with cold plasma in the treatment of locally advanced head and neck cancer. *Clinical Plasma Med.* (2018) 9:6–13. doi: 10.1016/j.cpme.2017.09.001
 107. Metelmann H-R, Nedrelov DS, Seebauer C, Schuster M, von Woedtke T, Weltmann K-D, et al. Head and neck cancer treatment and physical plasma. *Clinical Plasma Med.* (2015) 3:17–23. doi: 10.1016/j.cpme.2015.02.001
 108. Kang SU, Kim YS, Kim YE, Park JK, Lee YS, Kang HY, et al. Opposite effects of non-thermal plasma on cell migration and collagen production in keloid and normal fibroblasts. *PLoS ONE.* (2017) 12:e0187978. doi: 10.1371/journal.pone.0187978
 109. Sari DH, Ningsih SS, Antarianto RD, Sadikin M, Hardiany NS, Jusman SWA. mRNA relative expression of cancer associated fibroblasts markers in keloid scars. *Adv Sci Lett.* (2017) 23:6893–5. doi: 10.1166/asl.2017.9426
 110. Dong X, Chen M, Wang Y, Yu Q. A Mechanistic study of plasma treatment effects on demineralized dentin surfaces for improved adhesive/dentin interface bonding. *Clin Plasma Med.* (2014) 2:11–6. doi: 10.1016/j.cpme.2014.04.001
 111. Dhaliwal D, Shepherd TG. Molecular and cellular mechanisms controlling integrin-mediated cell adhesion and tumor progression in ovarian cancer

- metastasis: a review. *Clinical & Experimental Metastasis*. (2021). 39:291–301. doi: 10.1007/s10585-021-10136-5
112. Lee HJ, Shon CH, Kim YS, Kim S, Kim GC, Kong MG. Degradation of adhesion molecules of G361 melanoma cells by a non-thermal atmospheric pressure microplasma. *New J Phys*. (2009) 11:115026. doi: 10.1088/1367-2630/11/11/115026
 113. Shashurin A, Stepp MA, Hawley TS, Pal-Ghosh S, Brieda L, Bronnikov S, et al. Influence of cold plasma atmospheric jet on surface integrin expression of living cells. *Plasma Processes and Polymers*. (2010) 7:294–300. doi: 10.1002/ppap.200900086
 114. Soltés L, Mendichi R, Kogan G, Schiller J, Stankovska M, Arnhold J. Degradative action of reactive oxygen species on hyaluronan. *Biomacromolecules*. (2006) 7:659–68. doi: 10.1021/bm050867v
 115. Degendorfer G, Chuang CY, Kawasaki H, Hammer A, Malle E, Yamakura F, et al. Peroxynitrite-mediated oxidation of plasma fibronectin. *Free Radic Biol Med*. (2016) 97:602–15. doi: 10.1016/j.freeradbiomed.2016.06.013
 116. Sasaki S, Kanzaki M, Kaneko T. Calcium influx through TRP channels induced by short-lived reactive species in plasma-irradiated solution. *Sci Rep*. (2016) 6:25728. doi: 10.1038/srep25728
 117. Bekeschus S, Moritz J, Schmidt A, Wende K. Redox regulation of leukocyte-derived microparticle release and protein content in response to cold physical plasma-derived oxidants. *Clinical Plasma Medicine*. (2017). 7:8:24–35. doi: 10.1016/j.cpm.2017.07.001
 118. Partecke LI, Evert K, Haugk J, Doering F, Normann L, Diedrich S, et al. Tissue tolerable plasma (TTP) induces apoptosis in pancreatic cancer cells in vitro and in vivo. *BMC Cancer*. (2012) 12:473. doi: 10.1186/1471-2407-12-473
 119. Bekeschus S, Wulf CP, Freund E, Koensgen D, Mustea A, Weltmann K-D, Stope MB. Plasma treatment of ovarian cancer cells mitigates their immunomodulatory products active on THP-1 monocytes. *Plasma*. (2018) 1:201–17.
 120. Xu R-G, Chen Z, Keidar M, Leng Y. The impact of radicals in cold atmospheric plasma on the structural modification of gap junction: a reactive molecular dynamics study. *Int J Smart Nano Mater*. (2019) 10:144–55. doi: 10.1080/19475411.2018.1541936
 121. Schmidt A, Bekeschus S, Wende K, Vollmar B, von Woedtke T. A cold plasma jet accelerates wound healing in a murine model of full-thickness skin wounds. *Exp Dermatol*. (2017) 26:156–62. doi: 10.1111/exd.13156
 122. Choi J-H, Nam S-H, Song Y-S, Lee H-W, Lee H-J, Song K, et al. Treatment with low-temperature atmospheric pressure plasma enhances cutaneous delivery of epidermal growth factor by regulating E-cadherin-mediated cell junctions. *Arch Dermatol Res*. (2014) 306:635–43. doi: 10.1007/s00403-014-1463-9
 123. Hoentsch M, von Woedtke T, Weltmann K-D, Barbara Nebe J. Time-dependent effects of low-temperature atmospheric-pressure argon plasma on epithelial cell attachment, viability and tight junction formation in vitro. *J Phys D Appl Phys*. (2011) 45:025206. doi: 10.1088/0022-3727/45/2/025206
 124. Schmidt A, von Woedtke T, Bekeschus S. Periodic Exposure of Keratinocytes to Cold Physical Plasma: An *In Vitro* Model for Redox-Related Diseases of the Skin. *Oxid Med Cell Longev*. (2016) 2016:9816072. doi: 10.1155/2016/9816072
 125. Lee HY, Choi JH, Hong JW, Kim GC, Lee HJ. Comparative study of the Ar and He atmospheric pressure plasmas on E-cadherin protein regulation for plasma-mediated transdermal drug delivery. *J Phys D Appl Phys*. (2018) 51:215401. doi: 10.1088/1361-6463/aabd8c
 126. Hung Y-W, Lee L-T, Peng Y-C, Chang C-T, Wong Y-K, Tung K-C. Effect of a nonthermal-atmospheric pressure plasma jet on wound healing: An animal study. *J Chin Med Assoc*. (2016). 79:320–8. doi: 10.1016/j.jcma.2015.06.024
 127. Rybalchenko OV, Orlova OG, Astaf'Ev AM, Pinchuk ME, Zakharova LB. *Morphological changes in infected wounds under the influence of non-thermal atmospheric pressure plasma*. (2018).
 128. Pouget J-P, Georgakilas AG, Ravanat J-L. Targeted and off-target (Bystander and Abscopal) effects of radiation therapy: redox mechanisms and risk/benefit analysis. *Antioxid Redox Signal*. (2018) 29:1447–87. doi: 10.1089/ars.2017.7267
 129. Mizuno K, Yonetamari K, Shirakawa Y, Akiyama T, Ono R. Anti-tumor immune response induced by nanosecond pulsed streamer discharge in mice. *J Phys D: Appl Phys*. (2017) 50:12LT01. doi: 10.1088/1361-6463/aa5dbb
 130. Kaushik NK, Kaushik N, Min B, Choi KH, Hong YJ, Miller V, et al. Cytotoxic macrophage-released tumour necrosis factor-alpha (TNF- α) as a killing mechanism for cancer cell death after cold plasma activation. *J Phys D Appl Phys*. (2016) 49:084001. doi: 10.1088/0022-3727/49/8/084001
 131. Lin A, Truong B, Pappas A, Kirifides L, Oubbari A, Chen S, et al. Uniform nanosecond pulsed dielectric barrier discharge plasma enhances anti-tumor effects by induction of immunogenic cell death in tumors and stimulation of macrophages. *Plasma Cancer*. (2015). 12:1392–9. doi: 10.1002/ppap.201500139
 132. Lin A, Truong B, Patel S, Kaushik N, Choi EH, Fridman G, et al. Nanosecond-pulsed DBD plasma-generated reactive oxygen species trigger immunogenic cell death in a549 lung carcinoma cells through intracellular oxidative stress. *Int J Mol Sci*. (2017) 18:doi: 10.3390/ijms18050966
 133. Miller V, Lin A, Fridman G, Dobrynin D, Fridman A: Plasma Stimulation of Migration of Macrophages. (2014) 11:119–7. doi: 10.1002/ppap.201400168
 134. Miller V, Lin A, Fridman A. Why target immune cells for plasma treatment of cancer. *Plasma Chem Plasma Process*. (2016) 36:259–68. doi: 10.1007/s11090-015-9676-z
 135. Fridman WH, Pagès F, Sautès-Fridman C, Galon J. The immune contexture in human tumours: impact on clinical outcome. *Nat Rev Cancer*. (2012) 12:298–306. doi: 10.1038/nrc3245
 136. Shaul ME, Fridlender ZG. Tumour-associated neutrophils in patients with cancer. *Nat Rev Clin Oncol*. (2019) 16:601–20. doi: 10.1038/s41571-019-0222-4
 137. Mu X, Shi W, Xu Y, Xu C, Zhao T, Geng B, et al. Tumor-derived lactate induces M2 macrophage polarization via the activation of the ERK/STAT3 signaling pathway in breast cancer. *Cell Cycle*. (2018) 17:428–38. doi: 10.1080/15384101.2018.1444305
 138. Khabipov A, Käding A, Liedtke KR, Freund E, Partecke L-I, Bekeschus S. Raw 264.7 macrophage polarization by pancreatic cancer cells – a model for studying tumour-promoting macrophages. *Anticancer Res*. (2019) 39:2871–82. doi: 10.21873/anticancer.13416 %J Anticancer Research
 139. Kaushik NK, Kaushik N, Adhikari M, Ghimire B, Linh NN, Mishra YK, et al. Preventing the solid cancer progression via release of anticancer-cytokines in co-culture with cold plasma-stimulated macrophages. *Cancers*. (2019) 11:doi: 10.3390/cancers11060842
 140. Sato M, Shames DS, Hasegawa Y. Emerging evidence of epithelial-to-mesenchymal transition in lung carcinogenesis. *Respirology (Carlton, Vic)*. (2012) 17:1048–59. doi: 10.1111/j.1440-1843.2012.02173.x
 141. Tran Janco JM, Lamichhane P, Karyampudi L, Knutson KL. Tumor-infiltrating dendritic cells in cancer pathogenesis. *J Immunol*. (2015) 194:2985. doi: 10.4049/jimmunol.1403134
 142. Michielsen AJ, Hogan AE, Marry J, Tosetto M, Cox F, Hyland JM, et al. Tumour tissue microenvironment can inhibit dendritic cell maturation in colorectal cancer. *PLoS ONE*. (2011) 6:e27944. doi: 10.1371/journal.pone.0027944
 143. Liedtke KR, Freund E, Hackbarth C, Heidecke C-D, Partecke L-I, Bekeschus S. A myeloid and lymphoid infiltrate in murine pancreatic tumors exposed to plasma-treated medium. *Clinical Plasma Med*. (2018) 11:10–7. doi: 10.1016/j.cpm.2018.07.001
 144. Van Loenhout J, Flieswasser T, Freire Boulosa L, De Waele J, Van Audenaerde J, Marcq E, et al. Cold atmospheric plasma-treated PBS eliminates immunosuppressive pancreatic stellate cells and induces immunogenic cell death of pancreatic cancer cells. *Cancers*. (2019) 11:doi: 10.3390/cancers11101597
 145. Balachandran VP, Łuksza M, Zhao JN, Makarov V, Moral JA, Remark R, et al. Identification of unique neoantigen qualities in long-term survivors of pancreatic cancer. *Nature*. (2017) 551:512–6. doi: 10.1038/nature24462
 146. Bekeschus S, Clemen R, Metelmann H-R. Potentiating anti-tumor immunity with physical plasma. *Clinical Plasma Med*. (2018) 12:17–22. doi: 10.1016/j.cpm.2018.10.001
 147. Bekeschus S, Rödder K, Fregin B, Otto O, Lippert M, Weltmann KD, et al. Toxicity and immunogenicity in murine melanoma following exposure to physical plasma-derived oxidants. *Oxid Med Cell Longev*. (2017) 2017:4396467. doi: 10.1155/2017/4396467
 148. Bekeschus S, Winterbourn CC, Kolata J, Masur K, Hasse S, Bröker BM, et al. Neutrophil extracellular trap formation is elicited in response to cold physical plasma. *J Leukoc Biol*. (2016) 100:791–9. doi: 10.1189/jlb.3A0415-165RR

149. Bekeschus S, Kolata J, Muller A, Kramer A, Weltmann K-D, Broker B, et al. Differential viability of eight human blood mononuclear cell subpopulations after plasma treatment. *Plasma Med.* (2013) 3:1–13. doi: 10.1615/PlasmaMed.2014008450
150. Rödder K, Moritz J, Miller V, Weltmann K-D, Metelmann H-R, Gandhirajan R, et al. Activation of murine immune cells upon co-culture with plasma-treated b16f10 melanoma cells. *Appl Sci.* (2019) 9:660. doi: 10.3390/app9040660
151. Freund E, Liedtke KR, van der Linde J, Metelmann HR, Heidecke CD, Partecke LI, et al. Physical plasma-treated saline promotes an immunogenic phenotype in CT26 colon cancer cells in vitro and in vivo. *Sci Rep.* (2019) 9:634. doi: 10.1038/s41598-018-37169-3
152. Lin AG, Xiang B, Merlino DJ, Baybutt TR, Sahu J, Fridman A, et al. Non-thermal plasma induces immunogenic cell death in vivo in murine CT26 colorectal tumors. *Oncoimmunology.* (2018) 7:e1484978. doi: 10.1080/2162402x.2018.1484978
153. Azzariti A, Iacobazzi RM, Di Fonte R, Porcelli L, Gristina R, Favia P, et al. Plasma-activated medium triggers cell death and the presentation of immune activating danger signals in melanoma and pancreatic cancer cells. *Sci Rep.* (2019) 9:4099. doi: 10.1038/s41598-019-40637-z
154. Bekeschus S, Mueller A, Miller V, Gaipf U, Weltmann K. Physical plasma elicits immunogenic cancer cell death and mitochondrial singlet oxygen. *IEEE Trans Radiat Plasma Med Sci.* (2018) 2:138–46. doi: 10.1109/TRPMS.2017.2766027
155. Garg AD, Nowis D, Golab J, Vandenabeele P, Krysko DV, Agostinis P. Immunogenic cell death, DAMPs and anticancer therapeutics: an emerging amalgamation. *Biochimica et Biophysica Acta (BBA) - Reviews on Cancer.* (2010) 1805:53–71. doi: 10.1016/j.bbcan.2009.08.003
156. Vitiello L, Gorini S, Rosano G, la Sala A. Immunoregulation through extracellular nucleotides. *Blood.* (2012) 120:511–8. doi: 10.1182/blood-2012-01-406496
157. Bianchi ME, Manfredi AA. High-mobility group box 1 (HMGB1) protein at the crossroads between innate and adaptive immunity. *Immunol Rev.* (2007) 220:35–46. doi: 10.1111/j.1600-065X.2007.00574.x
158. Aymeric L, Apetoh L, Ghiringhelli F, Tesniere A, Martins I, Kroemer G, et al. Tumor cell death and ATP release prime dendritic cells and efficient anticancer immunity. *Cancer Res.* (2010) 70:855–8. doi: 10.1158/0008-5472.Can-09-3566
159. Obeid M, Tesniere A, Ghiringhelli F, Fimia GM, Apetoh L, Perfettini JL, et al. Calreticulin exposure dictates the immunogenicity of cancer cell death. *Nat Med.* (2007) 13:54–61. doi: 10.1038/nm1523
160. Krysko O, Löve Aaes T, Bachert C, Vandenabeele P, Krysko DV. Many faces of DAMPs in cancer therapy. *Cell Death Dis.* (2013) 4:e631–e631. doi: 10.1038/cddis.2013.156
161. Tesniere A, Panaretakis T, Kepp O, Apetoh L, Ghiringhelli F, Zitvogel L, et al. Molecular characteristics of immunogenic cancer cell death. *Cell Death Differ.* (2008) 15:3–12. doi: 10.1038/sj.cdd.4402269
162. Panaretakis T, Kepp O, Brockmeier U, Tesniere A, Bjorklund AC, Chapman DC, et al. Mechanisms of pre-apoptotic calreticulin exposure in immunogenic cell death. *EMBO J.* (2009) 28:578–90. doi: 10.1038/emboj.2009.1
163. Kepp O, Senovilla L, Vitale I, Vacchelli E, Adjemian S, Agostinis P, et al. Consensus guidelines for the detection of immunogenic cell death. *Oncoimmunology.* (2014) 3:e955691. doi: 10.4161/21624011.2014.955691
164. la Sala A, Ferrari D, Di Virgilio F, Idzko M, Norgauer J, Girolomoni G. Alerting and tuning the immune response by extracellular nucleotides. *J Leukoc Biol.* (2003) 73:339–43. doi: 10.1189/jlb.0802418
165. Rasouli M, Fallah N, Bekeschus S. Combining nanotechnology and gas plasma as an emerging platform for cancer therapy: mechanism and therapeutic implication. *Oxid Med Cell Longev.* (2021) 2021:2990326–2990326. doi: 10.1155/2021/2990326
166. Kong MG, Keidar M, Ostrikov K. Plasmas meet nanoparticles—where synergies can advance the frontier of medicine. *J Phys D Appl Phys.* (2011) 44:174018. doi: 10.1088/0022-3727/44/17/174018
167. Schmidt A, Liebelt G, Striesow J, Freund E, von Woedtke T, Wende K, et al. The molecular and physiological consequences of cold plasma treatment in murine skin and its barrier function. *Free Radic Biol Med.* (2020) 161:32–49. doi: 10.1016/j.freeradbiomed.2020.09.026
168. Lademann J, Patzelt A, Richter H, Lademann O, Baier G, Breucker L, et al. Nanocapsules for drug delivery through the skin barrier by tissue-tolerable plasma. *Laser Phys Lett.* (2013) 10:083001. doi: 10.1088/1612-2011/10/8/083001
169. Lademann O, Richter H, Meinke MC, Patzelt A, Kramer A, Hinz P, et al. Drug delivery through the skin barrier enhanced by treatment with tissue-tolerable plasma. *Exp Dermatol.* (2011) 20:488–90. doi: 10.1111/j.1600-0625.2010.01245.x

Conflict of Interest: The authors declare that the research was conducted in the absence of any commercial or financial relationships that could be construed as a potential conflict of interest.

Publisher's Note: All claims expressed in this article are solely those of the authors and do not necessarily represent those of their affiliated organizations, or those of the publisher, the editors and the reviewers. Any product that may be evaluated in this article, or claim that may be made by its manufacturer, is not guaranteed or endorsed by the publisher.

Copyright © 2022 Min, Xie, Ren, Sun, Wang, Dang and Zhang. This is an open-access article distributed under the terms of the Creative Commons Attribution License (CC BY). The use, distribution or reproduction in other forums is permitted, provided the original author(s) and the copyright owner(s) are credited and that the original publication in this journal is cited, in accordance with accepted academic practice. No use, distribution or reproduction is permitted which does not comply with these terms.