



ELP6 and PLIN5 Mutations Were Probably Prognostic Biomarkers for Patients With Gastric Cancer

Ji Di^{1,2}, Yan Chai², Xin Yang¹, Haibin Dong³, Bo Jiang^{3*} and Faxiang Ji^{1*}

¹ Department of Medical Oncology, Affiliated Hospital of Qinghai University, Xining, China, ² School of Clinical Medicine, Tsinghua University, Beijing, China, ³ Department of Gastroenterology, Tsinghua Changgong Hospital, Tsinghua University, Beijing, China

OPEN ACCESS

Edited by:

Hailiang Zhang,
Fudan University, China

Reviewed by:

Ziheng Wang,
Affiliated Hospital of Nantong
University, China
Zengjun Wang,
Nanjing Medical University, China

*Correspondence:

Bo Jiang
dj18@tsinghua.org.cn;
qhjiangbo@outlook.com
Faxiang Ji
jfx169@163.com

Specialty section:

This article was submitted to
Gastroenterology,
a section of the journal
Frontiers in Medicine

Received: 28 October 2021

Accepted: 04 January 2022

Published: 09 February 2022

Citation:

Di J, Chai Y, Yang X, Dong H, Jiang B
and Ji F (2022) ELP6 and PLIN5
Mutations Were Probably Prognostic
Biomarkers for Patients With Gastric
Cancer. *Front. Med.* 9:803617.
doi: 10.3389/fmed.2022.803617

Purpose: Gastric cancer (GC) is the fifth leading cancer around world. And prognosis of patients with GC is still undesirable. Our study aimed to explore potential prognostic biomarkers for patients with GC.

Methods: The clinical samples were collected from the Qinghai University Affiliated Hospital, which were subjected to the whole exome sequencing (WES). The other GC-related data were obtained from The Cancer Genome Atlas (TCGA) database. Cross analyses were done to determine the candidate genes. And the final mutated genes were determined by survival analyses, univariate and multivariate Cox regression analyses. CIBERSORT and GSEA were used for immune cell infiltration analysis and functional enrichment, respectively.

Results: After cross analyses, 160 candidate-mutated genes were identified. And mutated ELP6 and PLIN5 were significantly independently correlated with the overall survival (OS) of patients with GC. Patients with GC with ELP6 and PLIN5 mutations had worse and better prognosis, respectively. Totally 5 types of immune cells were significantly differentially infiltrated in wild-type and mutated ELP6 and PLIN5 GC samples. In mutated ELP6 and PLIN5 GC samples, totally 7 and 11 pathways were significantly enriched, respectively.

Conclusions: The ELP6 and PLIN5 mutations were probably prognostic biomarkers for patients with GC.

Keywords: gastric cancer, ELP6 mutation, PLIN5 mutation, prognosis, whole exome sequencing

INTRODUCTION

Gastric cancer (GC), as the fifth leading cancer and the fourth cause of mortality related to cancer, is a heavy health burden worldwide, leading to ~760,000 deaths per year (1, 2). Meanwhile, the incidence of GC is differential in various areas, and incidence in China and some East Asia countries is relatively high (3). Most patients with GC often show few obvious or specific symptom at an early stage, which results in a lower early detection probability of GC (4). And over 70% patients with GC are diagnosed at an advance stage, whose prognosis is relatively poorer compared with patients diagnosed at early stage, with a median overall survival (OS) of only 10–12 months (5, 6). Despite several risk factors of GC had been documented, such as *Helicobacter pylori* infection (7) and smoking (8), it still remains a great challenge to effectively prevent GC. Currently, a growing

number of studies indicated the crucial role of aberrant gene expression in the progression or prognosis of GC (9). For example, PIK3CA mutations have been suggested to be involved in the development of GC and are probably favorable prognostic factor in patients with GC (10). Furthermore, sampling before diagnosis could also be used for predicting survival of patients with GC, which would benefit for a more reliable clinical decision (11). Accordingly, more potential diagnostic or prognostic predictors of GC are still urgently needed to improve the OS of patients with GC.

More recently, with the great development of next-generation sequencing (NGS), the whole exome sequencing (WES) has been also widely applied in many diseases' researches, including cancer (12, 13). WES could help researchers obtain about 85% of known disease-related variants *via* sequencing ~1% of the genome (14), which makes it a powerful tool in cancer researches. And WES has been used for studying the correlation between primary tumors and metastasis in breast cancer (15), colorectal cancer (16), and so on. Moreover, the roles of some gene mutations have also been reported in GC among various population, such as CDH1 (17), TP53 (18), APC (19), ARID1A (20), and so on; however, to the best of our knowledge, the prognostic exploration of GC combining clinical samples' WES with publicly obtained data is limited. Additionally, ELP6 and PLIN5 mutations have been seldom studied in GC samples, but they were studied in some other cancers. The integral Elongator subunit comprising ELP1–ELP6 involves in the cell motility and tumorigenicity (21, 22). And ELP6 (also known as C3ORF75) has been revealed to play an important role in the migration and tumorigenicity of melanoma cells (23). PLIN5 has been reported to be promising prognostic or diagnostic markers in pancreatic cancer and hepatocellular carcinoma (24, 25).

Collectively, in this study, we integrated the WES data of clinical samples, public data in The Cancer Genome Atlas (TCGA) database (<https://tcga-data.nci.nih.gov/tcga/>), and bioinformatics analyses. Herein, we purposed to explore novel prognostic biomarkers for patients with GC in order to give more alternatives for better clinical strategies.

MATERIALS AND METHODS

Research Objects

All samples used for the WES were collected from the Qinghai University Affiliated Hospital. Totally four groups of participants were included, comprising familial patients with GC (7 patients, case group), healthy relatives of patients with familial GC (4 patients, Kinsfolk group), patients with sporadic GC (3 patients, Sanfa group), and healthy control (2 participants, health group). This study was approved by the Ethics Committee of Affiliated Hospital of Qinghai University (ethic code: P-SL-2018015). And the written informed consents were obtained from all participants.

Moreover, we also downloaded the GC somatic mutation data and RNA-sequencing data from TCGA database. The clinical information of these patients were displayed in **Table 1**. Furthermore, the GC mRNA expression data in GSE158662 dataset were downloaded from the Gene Expression

TABLE 1 | Clinicopathological characteristics of TCGA patients with gastric carcinoma.

Characteristics	Groups	Patients (%)
Age	Median	67
	Range	30–90
Gender	Female	157 (35.93%)
	Male	280 (64.07%)
TNM stage	I	57 (13.04%)
	II	130 (29.75%)
	III	181 (41.42%)
	IV	43 (9.84%)
	Unknown	26 (5.95%)
Invasion depth	T1	23 (5.26%)
	T2	91 (20.82%)
	T3	197 (45.08%)
	T4	117 (26.77%)
	TX	9 (2.06%)
Lymph node metastasis	N0	130 (29.75%)
	N1	117 (26.77%)
	N2	84 (19.22%)
	N3	87 (19.91%)
	NX	17 (3.89%)
Distant metastasis	Unknown	2 (0.46%)
	M0	385 (88.10%)
	M1	30 (6.86%)
	MX	22 (5.03%)
Grade	G1	12 (2.75%)
	G2	159 (36.38%)
	G3	257 (58.81%)
	GX	9 (2.06%)
ELP6 mutation	Wild	432 (98.86%)
	Mutation	5 (1.14%)
PLIN mutation	Wild	423 (96.80%)
	Mutation	14 (3.20%)
Status	Alive	240 (54.92%)
	Dead	169 (38.67%)
	Unknown	28 (6.41%)

TCGA, The Cancer Genome Atlas.

Omnibus (GEO) database (<https://www.ncbi.nlm.nih.gov/geo/>), comprising the data of 3 GC specimens and 3 adjacent specimens.

Whole Exome Sequencing

The Agilent SureSelect Human All Exon V6 Kit (Agilent, Santa Clara, CA, USA) was used to construct and capture the DNA of exon regions of all sample, which were then sequenced on the Illumina platform. All reads were aligned with the human reference genome (hg38) utilizing the Burrows-Wheeler-Alignment (BWA) Tool (Wellcome Trust Sanger Institute, Cambridge, UK) (26) software, and the Sentieon Haplotyper module of BWA was used for SNV and Indel detecting. Then the detected SNP and Indel were annotated in the ANNOVAR (University of Pennsylvania, Philadelphia, PA, USA) software (27).

Candidate Gene Screening

The mutation data obtained from the WES were firstly screened, and the synonymous mutation and the sites located in the intergenic and intron regions were removed. Compared with health group, the genes only mutated in case group were selected. Compared with the Kinsfolk group, the genes only mutated in the case group were selected. Compared with the Sanfa group, the genes only mutated in the case group were selected. And the cross analyses of these three pair comparison finally determined potential candidate genes.

Survival Analyses

The correlation between gene mutations and OS was analyzed according to the Kaplan–Meier (KM) method. And the mutant genes related to the prognosis of GC were then screened basing on the univariate Cox regression analysis, utilizing survival and survminer package of R. And the multivariate Cox regression analysis was adopted to determine whether prognosis-related mutant genes were independent prognostic factors.

Immune Cell Infiltration

The relative proportions of 22 kinds of immune cells in GC samples downloaded from the TCGA database were analyzed in the software CIBERSORT (Alizadeh Lab and Newman Lab, Stanford, CA, USA) (28). Based on the gene expression matrix, the CIBERSORT method could characterize the immune cell composition in each sample according to the deconvolution algorithm.

Gene Set Enrichment Analysis

The Gene Set Enrichment Analysis (GSEA) was performed on the mutant and wild-type GC samples, on the basis of the Kyoto Encyclopedia of Genes and Genomes (KEGG) pathway gene sets (Version 7.4) under Molecular Signatures Database (MSigDB) (<https://www.gsea-msigdb.org/gsea/index.jsp>), using the GSEA software (Version 4.0.3) (29). And the number of gene set permutations was 1,000 during the analysis.

Statistical Analyses

The immune cell infiltration difference among various groups was compared using the Wilcoxon signed-rank test. The significant threshold was $p < 0.05$. All statistical analyses were done in R (version v3.6.1).

RESULTS

The Identification of Candidate Genes

First, we screened the potential candidate genes based on the results of WES. Compared with the health group, totally 413 genes mutated only in the case group while did not mutate in the health group. Compared with the Kinsfolk group, 525 genes mutated only in the case group. Compared with the Sanfa group, 683 genes mutated only in the case group. After cross analysis, the results were displayed in Venn diagram (**Figure 1A**). Then the 160 mutated genes found in the case vs. health groups were potential candidate genes (green part in **Figure 1A**). And the detailed mutated genes and candidate genes were listed in **Supplementary Table 1**.

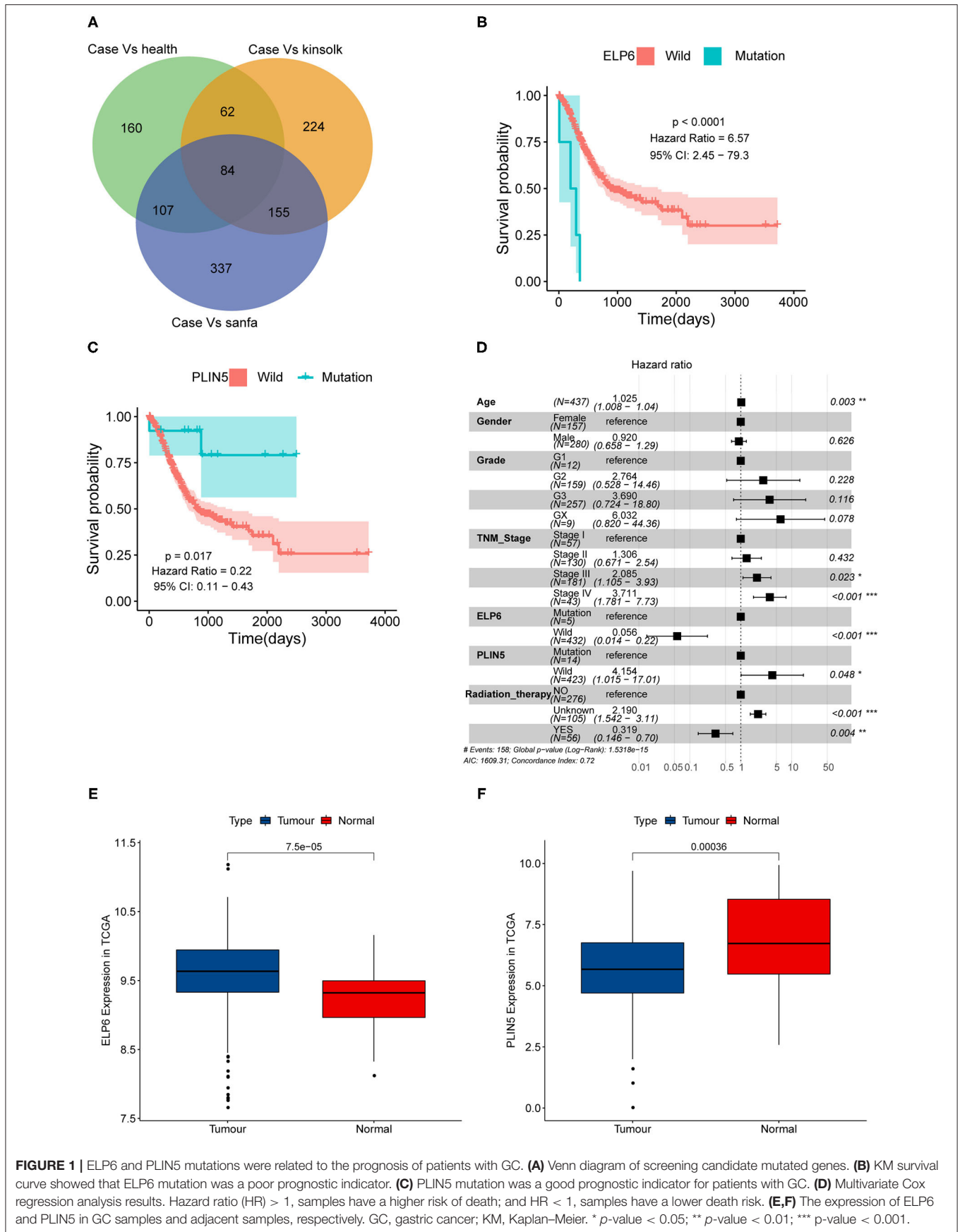
ELP6 and PLIN5 Mutations Were Independent Prognostic Factors for GC

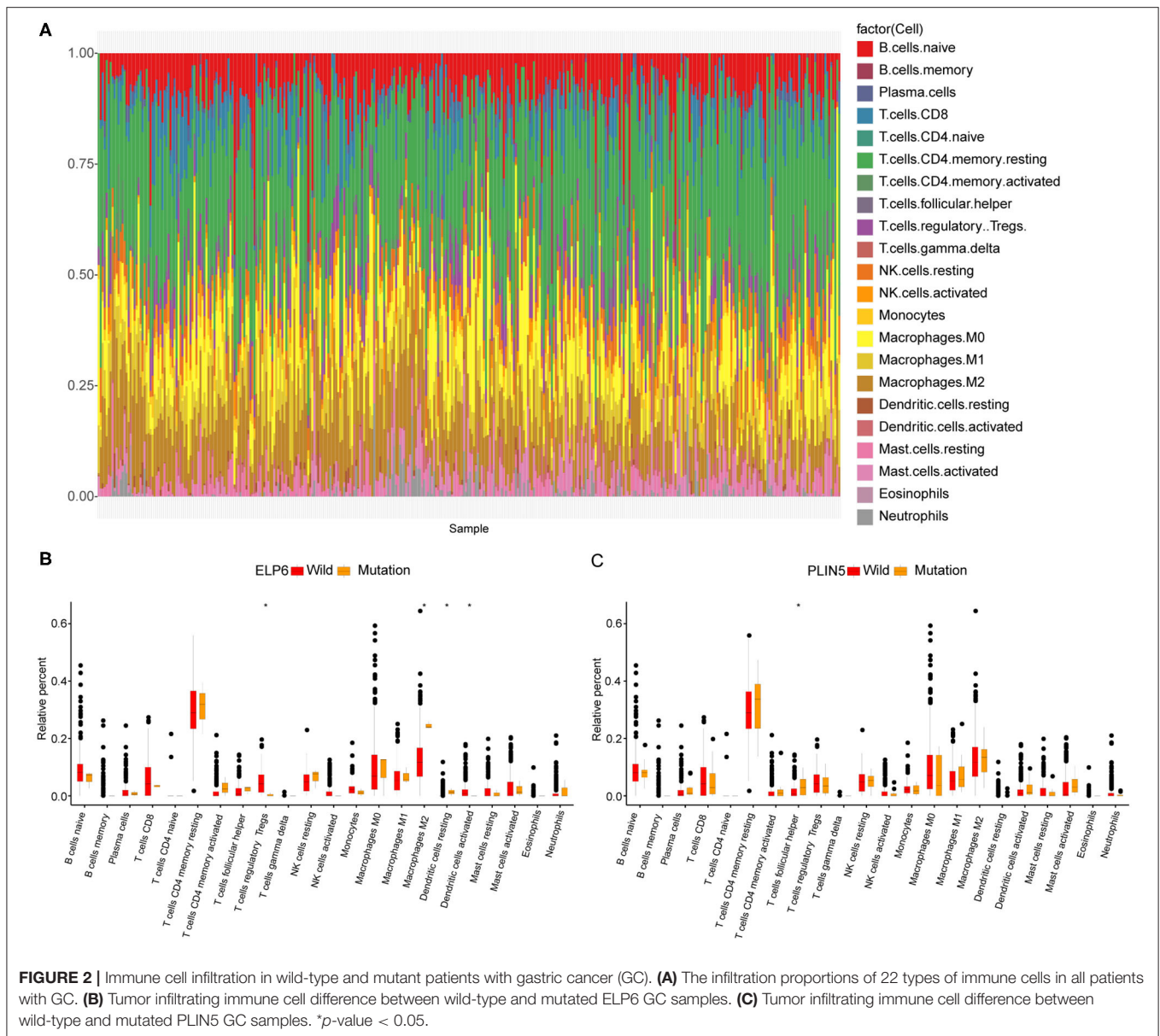
The somatic mutation data in the TCGA database was divided into wild-type and mutation groups according to whether the candidate genes mutated or not. And the univariate Cox regression analysis was conducted on the wild-type and mutant samples. We found that mutated ELP6 and PLIN5 were significantly related to the OS of patients with GC ($p < 0.05$). Moreover, the OS of mutated ELP6 GC samples was undesirable (HR = 6.57, 95%CI: 2.45–79.3, $p < 0.0001$) (**Figure 1B**), but mutated PLIN5 GC samples had a better prognosis (HR = 0.22, 95%CI: 0.11–0.43, $p = 0.017$) (**Figure 1C**).

Furthermore, a multivariate Cox regression analysis included 7 factors was performed to determine whether ELP6 and PLIN5 were independent prognostic indicators, comprising age, gender, TNM stage, grade, radiation therapy, ELP6, and PLIN5. The results suggested that ELP6 was still significantly associated with the OS of patients with GC, and taking wild-type as reference, GC samples with ELP6 mutation had a higher risk of death (HR = 15.970, 95%CI: 4.222–60.406, $p < 0.001$) (**Figure 1D**). Furthermore, PLIN5 was also significantly correlated with the OS of patients with GC, and when compared with the wild-type reference, mutated PLIN5 was a good prognostic factor for patients with GC (HR = 0.175, 95%CI: 0.043–0.715, $p = 0.0152$) (**Figure 1D**). Both ELP6 and PLIN5 were independent prognostic indicators; furthermore, age, TNM stage, and radiation therapy were also independent prognostic factors for patients with GC. Moreover, the expression of ELP6 and PLIN5 was compared between GC and adjacent samples. We found that ELP6 was significantly highly expressed in GC samples (**Figure 1E**), whereas PLIN5 showed significantly higher expression in adjacent samples (**Figure 1F**). In GSE158662 dataset, ELP6 was also highly expressed in GC samples (**Supplementary Figure 1A**), and PLIN5 showed significantly lower expression in GC samples (**Supplementary Figure 1B**).

ELP6 and PLIN5 Mutations Were Related to the Differential Immune Cell Infiltration in GC Samples

Subsequently, we also explored the immune cell infiltration in all GC samples in TCGA. The results of analysis in CIBERSORT indicated that there were differential infiltrating proportions of 22 types of immune cells in various GC samples (**Figure 2A**). Additionally, four kinds of immune cells were significantly differentially infiltrated between wild-type and mutated ELP6 GC samples, including regulatory T cells (Tregs), M2 Macrophages, dendritic cells resting, and dendritic cells activated ($p < 0.05$) (**Figure 2B**). Between wild-type and mutated PLIN5 GC samples, T follicular helper cells showed significantly differential infiltration ($p < 0.05$) (**Figure 2C**). These significantly differentially infiltrated immune cells probably contributed to the differential prognoses of wild-type and mutant patients with GC.





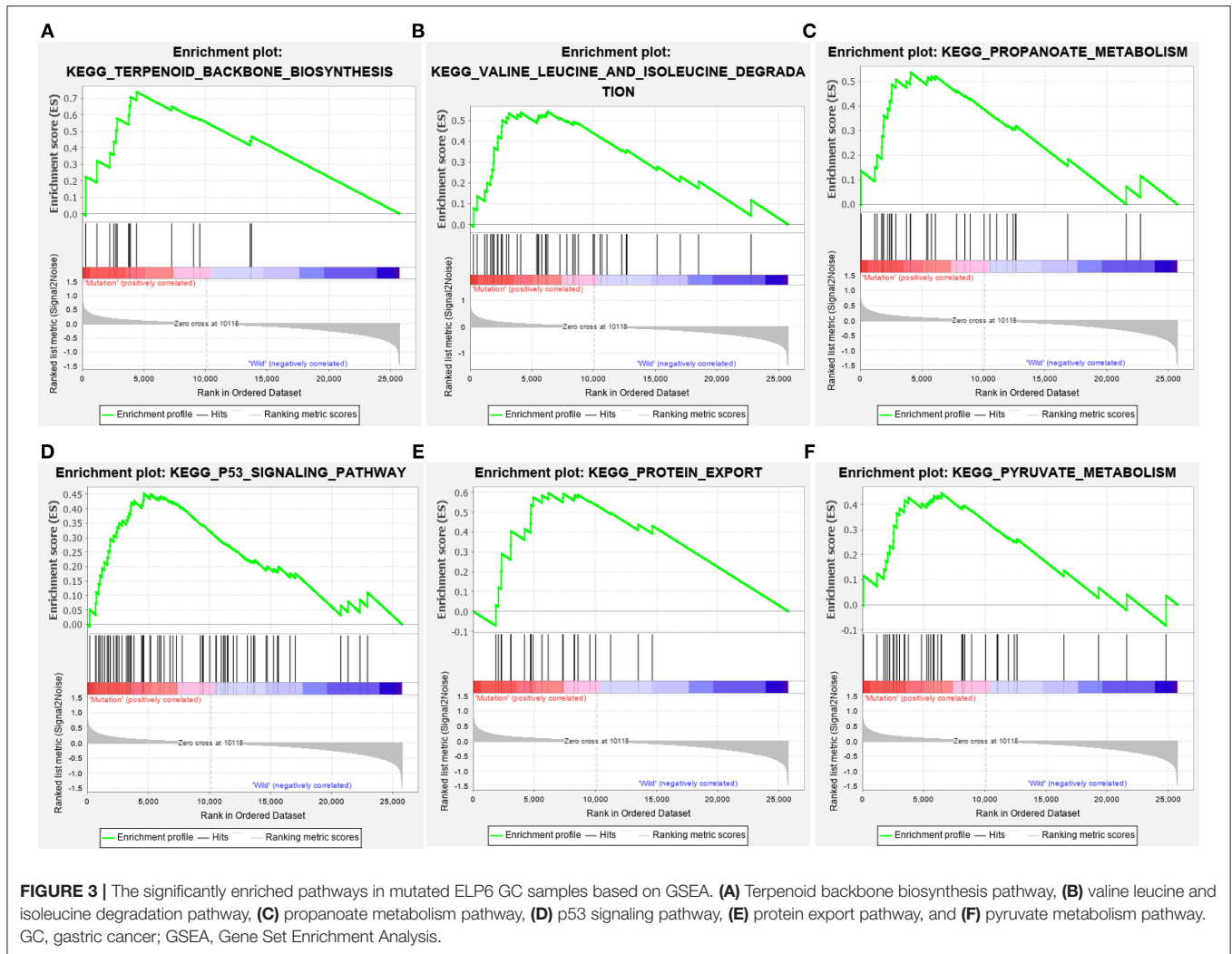
ELP6- and PLIN5-Related Pathways Revealed Through GSEA

The GC samples in TCGA database were then subjected to the GSEA to obtain the mutated ELP6- and PLIN5-related functional information. Our results showed that in mutated ELP6 GC samples, terpenoid backbone biosynthesis pathway, valine leucine and isoleucine degradation pathway, propanoate metabolism pathway, p53 signaling pathway, protein export pathway, pyruvate metabolism signaling pathways (Figure 3; Table 2), and 56 Gene Ontology (GO) terms (Figure 4; Supplementary Table 2) were significantly enriched. And in mutated PLIN5 GC samples, aminoacyl-tRNA biosynthesis pathway, Parkinson's disease pathway, base excision repair pathway, p53 signaling pathway, oxidative phosphorylation pathway, valine leucine and isoleucine degradation pathway,

proteasome pathway, ribosome pathway, glyoxylate and dicarboxylate metabolism pathway, protein export pathway, RNA degradation pathway (Figure 5; Table 3), and 176 GO terms (Figure 6; Supplementary Table 2) were significantly enriched. These functional pathways indicated the potential role of mutated ELP6 and PLIN5 in the progression and prognosis of GC samples.

DISCUSSION

In our present study, through the comprehensive analyses of the WES data of locally clinical GC samples and public GC data in TCGA database, mutated ELP6 and PLIN5 were found to be promising prognostic markers for patients with GC. Furthermore, ELP6 and PLIN5 mutations were both correlated



with the differential immune cell infiltration in GC samples, which contributed to the differential prognoses of patients with GC.

The onset and progression of GC is usually affected by many factors, such as genetic factors (30), behavioral factors (31), race (32), and so on. Accordingly, based on the results of WES, we conducted multiple cross analyses to avoid genetic or environmental influences and to determine the candidate mutated genes. Totally 160 mutated genes were identified. Subsequently, univariate and multivariate Cox regression analyses and GC somatic mutation data in TCGA together determined that mutated ELP6 and PLIN5 were independent prognostic predictors of GC. And patients with GC with ELP6 and PLIN5 mutations had relatively poor and good OS, respectively. ELP6 encodes a crucial subunit of the Elongator acetyltransferase complex, and Elongator influences the transcript elongation and protein translation (22). Some of the ELP members showed differential roles in various cancers, for example, aberrant expression of Elp3 or Elp4 promoted the migration and invasion of hepatocellular carcinoma cells (22). In

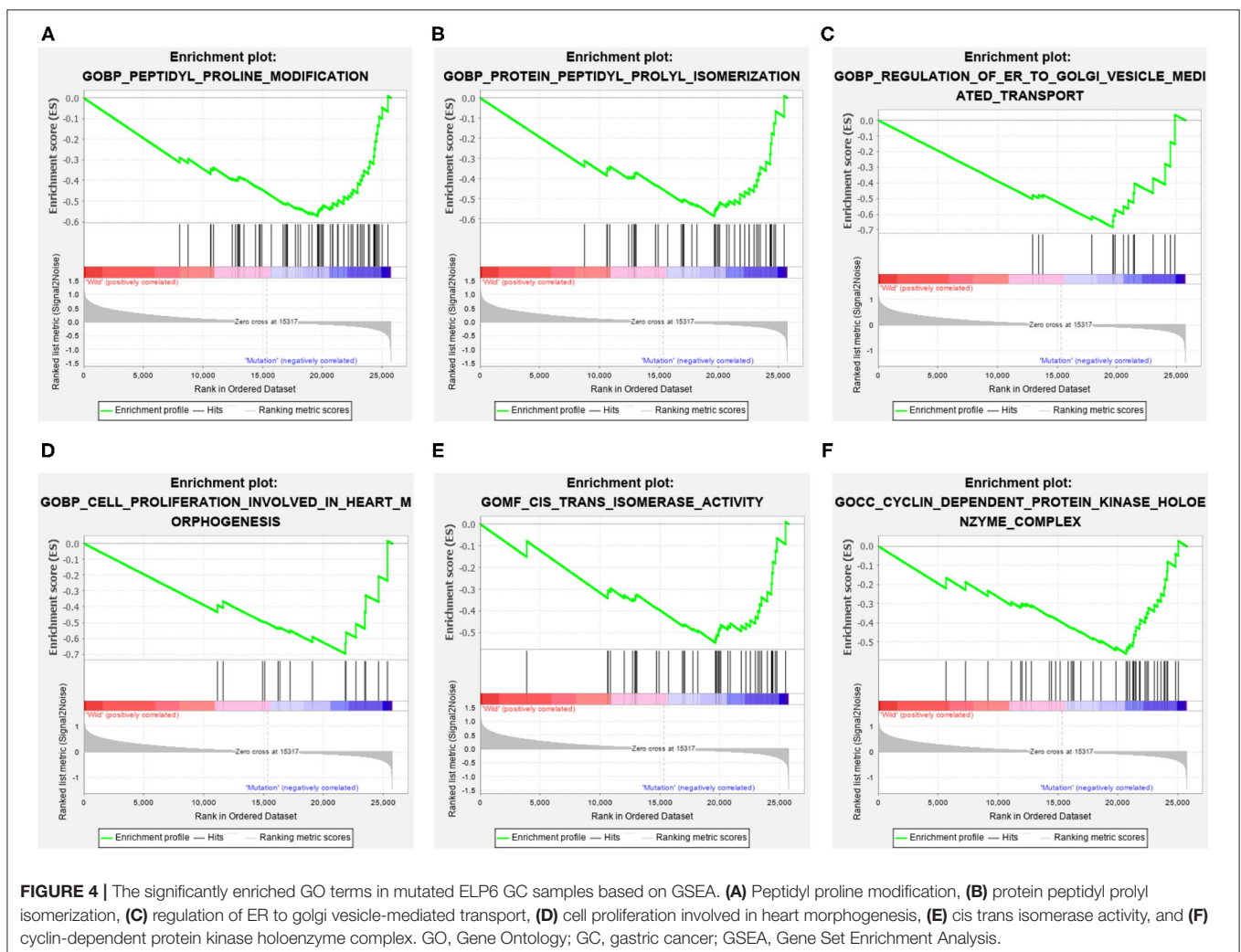
mouse model, Elongator mutation has been reported to induce the neurodegeneration and ataxia-like behavior (33). Moreover, ELP6 has been evidenced to play an important role in migration and tumorigenicity of melanoma cells (23), which reminded us that mutated ELP6 had a similar function in GC and thus was related to the poor prognosis of GC. PLIN5 (perilipin 5) could coat intracellular lipid storage droplets and protect them from lipolytic degradation. And as one of the redox-dependent factors of tumor, PLIN5 indirectly affected the redox state of adipose tissue in GC (34), which was potentially related to the prognosis of patients with GC. Additionally, the prognostic value of PLIN5 has been explored in many cancers, including breast cancer (35), pancreatic cancer (24), hepatocellular carcinoma (25), and so on; however, we first investigated the prognostic role of mutated PLIN5 in patients with GC. All the above evidence indicated that ELP6 and PLIN5 mutations were probably prognostic biomarkers for patients with GC.

Complex immune responses of the host have been the vital part of studying GC and its immunotherapy (36). Thus, we also studied the immune cell infiltration, and totally 5 types

TABLE 2 | GSEA-enriched KEGG pathways in ELP6 wild and ELP6 mutation.

Name	SIZE	NES	NOM <i>p</i> -value
ELP6 wild			
KEGG_VASOPRESSIN_REGULATED_WATER_REABSORPTION	44	-1.6403573	0.03112
KEGG_PHENYLALANINE_METABOLISM	18	-1.5563954	0.0316
KEGG_TYPE_II_DIABETES_MELLITUS	47	-1.5366147	0.0289
KEGG_TIGHT_JUNCTION	132	-1.467734	0.0365
ELP6 mutation			
KEGG_TERPENOID_BACKBONE_BIOSYNTHESIS	15	1.8711467	0.0037
KEGG_VALINE_LEUCINE_AND_ISOLEUCINE_DEGRADATION	44	1.7817888	0.0162
KEGG_PROPANOATE_METABOLISM	32	1.7669461	0.0056
KEGG_P53_SIGNALING_PATHWAY	68	1.7138146	0.0150
KEGG_PROTEIN_EXPORT	23	1.6627951	0.0138
KEGG_PYRUVATE_METABOLISM	40	1.576139	0.0407

GSEA, Gene Set Enrichment Analysis; KEGG, Kyoto Encyclopedia of Genes and Genomes.



of immune cells were significantly differentially infiltrated in wild-type and mutated ELP6 and PLIN5 GC samples. Tregs played a key role in the development and progression of GC;

furthermore, some subsets of Tregs in GC microenvironment induced the immunosuppression especially (37–39), implying its possible influence on mutated ELP6 and PLIN5 samples.

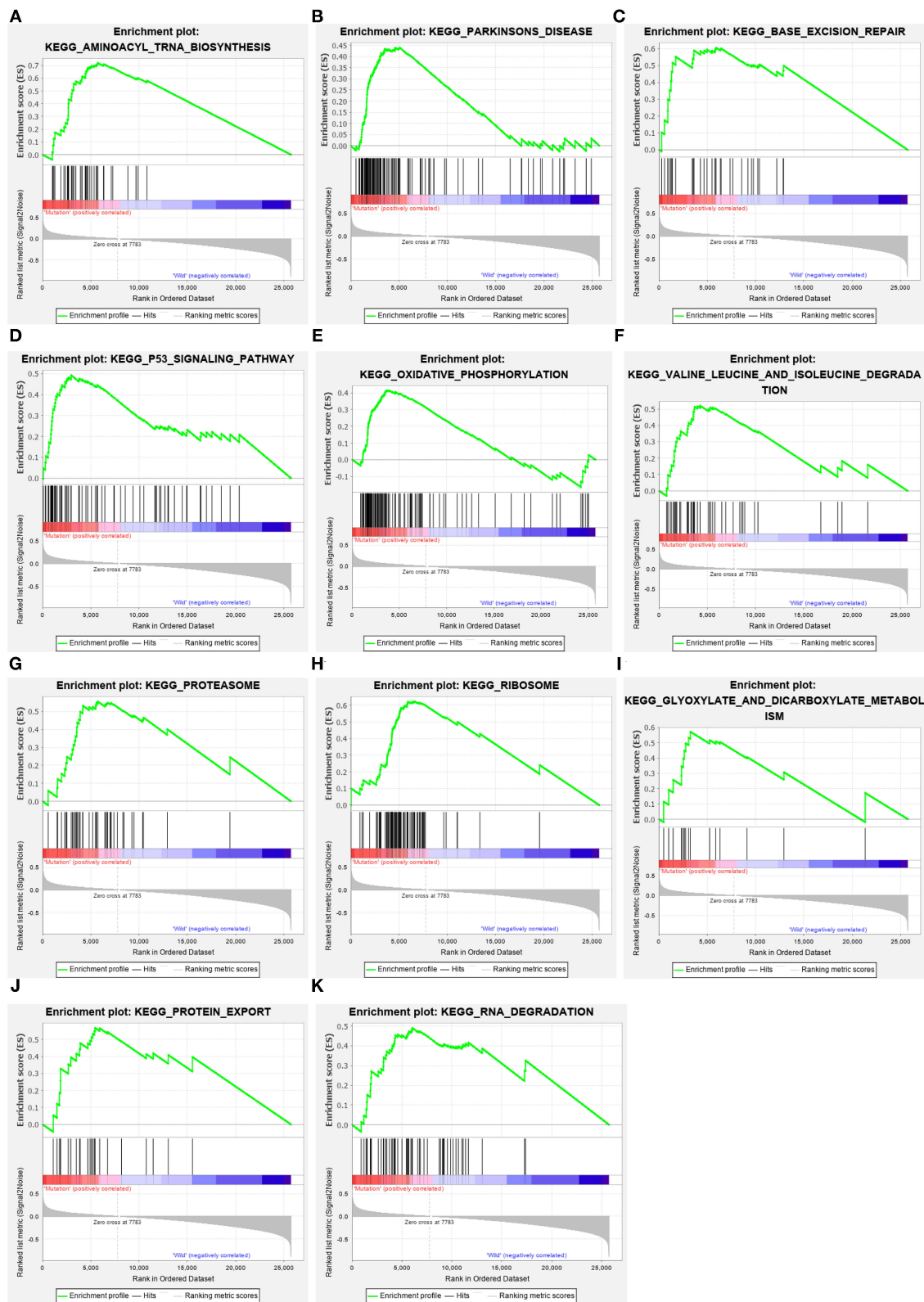
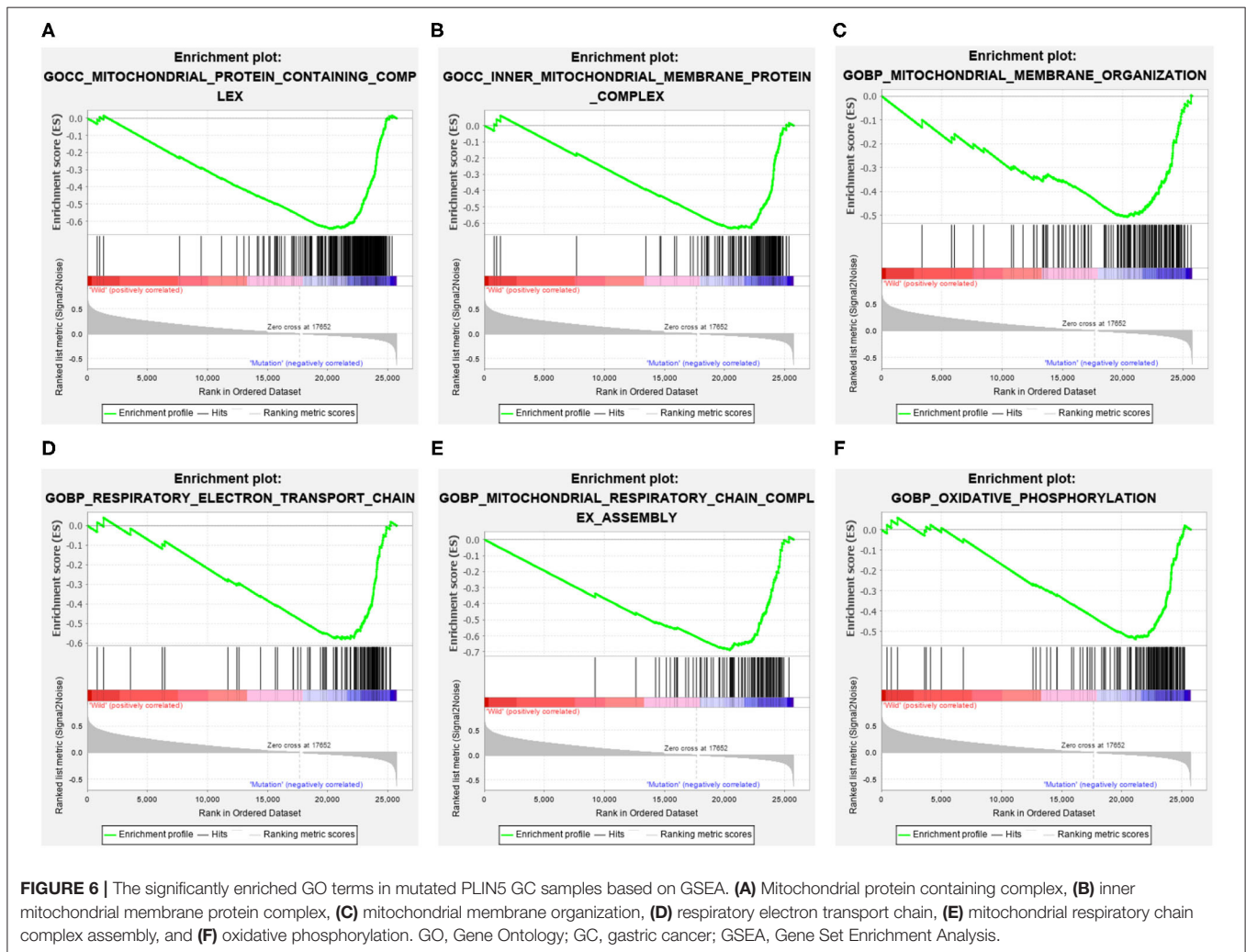


FIGURE 5 | The significantly enriched pathways in mutated PLIN5 GC samples based on GSEA. **(A)** Aminoacyl-tRNA biosynthesis pathway, **(B)** Parkinson's disease pathway, **(C)** base excision repair pathway, **(D)** p53 signaling pathway, **(E)** oxidative phosphorylation pathway, **(F)** valine leucine and isoleucine degradation pathway, **(G)** proteasome pathway, **(H)** ribosome pathway, **(I)** glyoxylate and dicarboxylate metabolism pathway, **(J)** protein export pathway, and **(K)** RNA degradation pathway. GC, gastric cancer; GSEA, Gene Set Enrichment Analysis.

TABLE 3 | GSEA-enriched KEGG pathways in PLIN5 wild and PLIN5 mutation.

Name	SIZE	NES	NOM <i>p</i> -value
PLIN5 wild			
KEGG_TIGHT_JUNCTION	132	-1.5699017	0.0305
KEGG_ABC_TRANSPORTERS	44	-1.5161897	0.0412
KEGG_NEUROACTIVE_LIGAND_RECEPTOR_INTERACTION	271	-1.4389659	0.0133
PLIN5 mutation			
KEGG_AMINOACYL_TRNA_BIOSYNTHESIS	41	2.0124779	0
KEGG_PARKINSON'S_DISEASE	113	1.8553538	0.0227
KEGG_BASE_EXCISION_REPAIR	33	1.8451898	0.0094
KEGG_P53_SIGNALING_PATHWAY	68	1.8282967	0.0115
KEGG_OXIDATIVE_PHOSPHORYLATION	116	1.74625	0.0468
KEGG_VALINE_LEUCINE_AND_ISOLEUCINE_DEGRADATION	44	1.735111	0.0308
KEGG_PROTEASOME	44	1.7183533	0.02148
KEGG_RIBOSOME	87	1.7036082	0.0468
KEGG_GLYOXYLATE_AND_DICARBOXYLATE_METABOLISM	16	1.646111	0.0306
KEGG_PROTEIN_EXPORT	23	1.6215007	0.0200
KEGG_RNA_DEGRADATION	57	1.615687	0.04340



Moreover, M2 Macrophages contributed to the progression and metastasis of GC (40, 41), which potentially affected the prognosis of patients with GC. The dysregulation of T follicular helper cells has been documented to involve in the inflammation and tumor development in GC, thus was correlated with the worse outcomes of patients (42), which was consistent with our findings. Collectively, considering the complex interactions between immune cells and GC, our findings deserved further exploration in the near future.

Additionally, more functional information of mutated ELP6 and PLIN5 in GC samples was obtained via GSEA. In mutated ELP6 and PLIN5 GC samples, totally 7 and 11 pathways were significantly enriched, respectively. We noticed that the P53 signaling pathway was also significantly enriched, which was regulated by multiple factors in various tumors and also was demonstrated to regulate GC cell function indirectly (43, 44). In addition, some metabolism-related pathways were also significantly enriched, such as propanoate metabolism pathway, pyruvate metabolism pathway, valine leucine and isoleucine degradation pathway, and so on. Our results provided more fundamental information of the role of ELP6 and PLIN5 mutations in GC samples, which deserved further investigated.

CONCLUSIONS

To summarize, we firstly revealed the prognostic value of mutated ELP6 and PLIN5 in GC via integrating the WES data of local GC samples and publicly obtained data. The ELP6 mutation is an independent poor prognostic marker for patients with GC, but patients with GC with mutated PLIN5 had relatively good prognoses.

DATA AVAILABILITY STATEMENT

The data presented in the study are deposited in the National Center for Biotechnology Information repository, accession number PRJNA791478.

REFERENCES

- Sung H, Ferlay J, Siegel RL, Laversanne M, Soerjomataram I, Jemal A, et al. Global Cancer statistics 2020: GLOBOCAN estimates of incidence and mortality worldwide for 36 cancers in 185 Countries. *CA Cancer J Clin.* (2021) 71:209–49. doi: 10.3322/caac.21660
- Petryszyn P, Chapelle N, Matsiuk-Budnik T. Gastric cancer: where are we heading? *Dig Dis.* (2020) 38:280–5. doi: 10.1159/000506509
- Siegel R, Ma J, Zou Z, Jemal A. Cancer statistics. *CA Cancer J Clin.* (2014) 64:9–29. doi: 10.3322/caac.21208
- Wei L, Sun J, Zhang N, Zheng Y, Wang X, Lv L, et al. Noncoding RNAs in gastric cancer: implications for drug resistance. *Mol Cancer.* (2020) 19:62. doi: 10.1186/s12943-020-01185-7
- Mayer RJ, Venook AP, Schilsky RL. Progress against GI cancer during the American Society of Clinical Oncology's first 50 years. *J Clin Oncol.* (2014) 32:1521–30. doi: 10.1200/JCO.2014.55.4121
- Digkila A, Wagner AD. Advanced gastric cancer: current treatment landscape and future perspectives. *World J Gastroenterol.* (2016) 22:2403–14. doi: 10.3748/wjg.v22.i8.2403
- Alipour M. Molecular mechanism of helicobacter pylori-induced gastric cancer. *J Gastrointest Cancer.* (2021) 52:23–30. doi: 10.1007/s12029-020-00518-5
- Moy KA, Fan Y, Wang R, Gao YT, Yu MC, Yuan JM. Alcohol and tobacco use in relation to gastric cancer: a prospective study of men in Shanghai, China. *Cancer Epidemiol Biomarkers Prev.* (2010) 19:2287–97. doi: 10.1158/1055-9965.EPI-10-0362
- Matsuoka T, Yashiro M. Biomarkers of gastric cancer: current topics and future perspective. *World J Gastroenterol.* (2018) 24:2818–32. doi: 10.3748/wjg.v24.i26.2818
- Shen X, Zhao Y, Chen X, Sun H, Liu M, Zhang W, et al. Associations of PIK3CA mutations with clinical features and prognosis in gastric cancer. *Future Oncol.* (2019) 15:1873–94. doi: 10.2217/fon-2018-0335
- Jeong SH, Kim RB, Park SY, Park J, Jung EJ, Ju YT, et al. Nomogram for predicting gastric cancer recurrence using biomarker gene expression. *Eur J Surg Oncol.* (2020) 46:195–201. doi: 10.1016/j.ejso.2019.09.143
- Chang YS, Chang CM, Lin CY, Chao DS, Huang HY, Chang JG. Pathway mutations in breast cancer using whole-exome sequencing. *Oncol Res.* (2020) 28:107–16. doi: 10.3727/096504019X15698362825407

ETHICS STATEMENT

The studies involving human participants were reviewed and approved by Ethics Committee of Affiliated Hospital of Qinghai University. The patients/participants provided their written informed consent to participate in this study.

AUTHOR CONTRIBUTIONS

JD, BJ, and FJ designed the study and drafted the manuscript. JD and YC performed the data curation and analysis. XY and HD analyzed and interpreted the results. All authors reviewed the manuscript and approved the final manuscript to be published.

FUNDING

This research was funded by the Technology Department of Qinghai province (Grant Number: 2018-HZ-814 and 2018-ZJ-702).

SUPPLEMENTARY MATERIAL

The Supplementary Material for this article can be found online at: <https://www.frontiersin.org/articles/10.3389/fmed.2022.803617/full#supplementary-material>

Supplementary Figure 1 | The expression of ELP6 and PLIN5 in GSE158662 dataset. **(A,B)** The expression of ELP6 and PLIN5 in GC samples and adjacent samples, respectively. GC, gastric cancer.

Supplementary Table 1 | Mutant genes in each group.

Supplementary Table 2 | Detailed results of GSEA.

13. Yan P, Wang Y, Meng X, Yang H, Liu Z, Qian J, et al. Whole exome sequencing of ulcerative colitis-associated colorectal cancer based on novel somatic mutations identified in Chinese patients. *Inflamm Bowel Dis.* (2019) 25:1293–301. doi: 10.1093/ibd/izz020
14. Zhu Z, Fu H, Wang S, Yu X, You Q, Shi M, et al. Whole-exome sequencing identifies prognostic mutational signatures in gastric cancer. *Ann Transl Med.* (2020) 8:1484. doi: 10.21037/atm-20-6620
15. Ng CKY, Bidard FC, Piscuoglio S, Geyer FC, Lim RS, de Bruijn I, et al. Genetic heterogeneity in therapy-naive synchronous primary breast cancers and their metastases. *Clin Cancer Res.* (2017) 23:4402–15. doi: 10.1158/1078-0432.CCR-16-3115
16. Wei Q, Ye Z, Zhong X, Li L, Wang C, Myers RE, et al. Multiregion whole-exome sequencing of matched primary and metastatic tumors revealed genomic heterogeneity and suggested polyclonal seeding in colorectal cancer metastasis. *Ann Oncol.* (2017) 28:2135–41. doi: 10.1093/annonc/mdx278
17. Guilford P, Hopkins J, Harraway J, McLeod M, McLeod N, Harawira P, et al. E-cadherin germline mutations in familial gastric cancer. *Nature.* (1998) 392:402–5. doi: 10.1038/32918
18. Li-Chang HH, Kasaian K, Ng Y, Lum A, Kong E, Lim H, et al. Retrospective review using targeted deep sequencing reveals mutational differences between gastroesophageal junction and gastric carcinomas. *BMC Cancer.* (2015) 15:32. doi: 10.1186/s12885-015-1021-7
19. Hu XT, He C. Recent progress in the study of methylated tumor suppressor genes in gastric cancer. *Chin J Cancer.* (2013) 32:31–41. doi: 10.5732/cjc.011.10175
20. Wang K, Kan J, Yuen ST, Shi ST, Chu KM, Law S, et al. Exome sequencing identifies frequent mutation of ARID1A in molecular subtypes of gastric cancer. *Nat Genet.* (2011) 43:1219–23. doi: 10.1038/ng.982
21. Gu J, Sun D, Zheng Q, Wang X, Yang H, Miao J, et al. Human Elongator complex is involved in cell cycle and suppresses cell growth in 293T human embryonic kidney cells. *Acta Biochim Biophys Sin (Shanghai).* (2009) 41:831–8. doi: 10.1093/abbs/gmp072
22. Xu Y, Zhou W, Ji Y, Shen J, Zhu X, Yu H, et al. Elongator promotes the migration and invasion of hepatocellular carcinoma cell by the phosphorylation of AKT. *Int J Biol Sci.* (2018) 14:518–30. doi: 10.7150/ijbs.23511
23. Close P, Gillard M, Ladang A, Jiang Z, Papuga J, Hawkes N, et al. DERP6 (ELP5) and C3ORF75 (ELP6) regulate tumorigenicity and migration of melanoma cells as subunits of Elongator. *J Biol Chem.* (2012) 287:32535–45. doi: 10.1074/jbc.M112.402727
24. Bai R, Rebelo A, Kleeff J, Sunami Y. Identification of prognostic lipid droplet-associated genes in pancreatic cancer patients via bioinformatics analysis. *Lipids Health Dis.* (2021) 20:58. doi: 10.1186/s12944-021-01476-y
25. Asimakopoulou A, Vucur M, Luedde T, Schneiders S, Kalampoka S, Weiss TS, et al. Perilipin 5 and lipocalin 2 expression in hepatocellular carcinoma. *Cancers (Basel).* (2019) 11(3): doi: 10.3390/cancers11030385
26. Li H, Durbin R. Fast and accurate long-read alignment with Burrows-Wheeler transform. *Bioinformatics.* (2010) 26:589–95. doi: 10.1093/bioinformatics/btp698
27. Wang K, Li M, Hakonarson H. ANNOVAR: functional annotation of genetic variants from high-throughput sequencing data. *Nucleic Acids Res.* (2010) 38:e164. doi: 10.1093/nar/gkq603
28. Newman AM, Liu CL, Green MR, Gentles AJ, Feng W, Xu Y, et al. Robust enumeration of cell subsets from tissue expression profiles. *Nat Methods.* (2015) 12:453–457. doi: 10.1038/nmeth.3337
29. Subramanian A, Tamayo P, Mootha VK, Mukherjee S, Ebert BL, Gillette MA, et al. Gene set enrichment analysis: a knowledge-based approach for interpreting genome-wide expression profiles. *Proc Natl Acad Sci U S A.* (2005) 102:15545–50. doi: 10.1073/pnas.0506580102
30. Sun H, Wu X, Wu F, Li Y, Yu Z, Chen X, et al. Associations of genetic variants in the PSCA, MUC1 and PLCE1 genes with stomach cancer susceptibility in a Chinese population. *PLoS One.* (2015) 10:e0117576. doi: 10.1371/journal.pone.0117576
31. Praud D, Rota M, Pelucchi C, Bertuccio P, Rosso T, Galeone C, et al. Cigarette smoking and gastric cancer in the stomach cancer pooling (StoP) Project. *Eur J Cancer Prev.* (2018) 27:124–133. doi: 10.1097/CEJ.0000000000000290
32. Poorolajal J, Moradi L, Mohammadi Y, Cheraghi Z, Gohari-Ensaf F. Risk factors for stomach cancer: a systematic review and meta-analysis. *Epidemiol Health.* (2020) 42(e2020004). doi: 10.4178/epih.e2020004
33. Kojic M, Gaik M, Kiska B, Salerno-Kochan A, Hunt S, Tedoldi A, et al. Elongator mutation in mice induces neurodegeneration and ataxia-like behavior. *Nat Commun.* (2018) 9:3195. doi: 10.1038/s41467-018-05765-6
34. Burlaka AP, Ganusevich, II, Vovk AV, Burlaka AA, Gafurov MR, et al. Redox state of adipose tissue for patients with gastric cancer and its connection with the body mass index and distance from the tumor. *Obes Res Clin Pract.* (2020) 14:34–8. doi: 10.1016/j.orcp.2019.10.003
35. Zhang X, Su L, Sun K. Expression status and prognostic value of the perilipin family of genes in breast cancer. *Am J Transl Res.* (2021) 13:4450–63. doi: 10.21203/rs.3.rs-583442/v1
36. Fu K, Hui B, Wang Q, Lu C, Shi W, Zhang Z, et al. Single-cell RNA sequencing of immune cells in gastric cancer patients. *Aging (Albany NY).* (2020) 12:2747–63. doi: 10.18632/aging.102774
37. Liu X, Zhang Z, Zhao G. Recent advances in the study of regulatory T cells in gastric cancer. *Int Immunopharmacol.* (2019) 73:560–67. doi: 10.1016/j.intimp.2019.05.009
38. Shi L, Feng M, Du S, Wei X, Song H, Yixin X, et al. Adenosine generated by regulatory t cells induces cd8(+) t cell exhaustion in gastric cancer through A2aR pathway. *Biomed Res Int.* (2019) 2019:4093214. doi: 10.1155/2019/4093214
39. Ling Z, Shao L, Liu X, Cheng Y, Yan C, Mei Y, et al. Regulatory T cells and plasmacytoid dendritic cells within the tumor microenvironment in gastric cancer are correlated with gastric microbiota dysbiosis: a preliminary study. *Front Immunol.* (2019) 10:533. doi: 10.3389/fimmu.2019.00533
40. Yamaguchi T, Fushida S, Yamamoto Y, Tsukada T, Kinoshita J, Oyama K, et al. Tumor-associated macrophages of the M2 phenotype contribute to progression in gastric cancer with peritoneal dissemination. *Gastric Cancer.* (2016) 19:1052–1065. doi: 10.1007/s10120-015-0579-8
41. Chen Y, Zhang S, Wang Q, Zhang X. Tumor-recruited M2 macrophages promote gastric and breast cancer metastasis via M2 macrophage-secreted CHI3L1 protein. *J Hematol Oncol.* (2017) 10:36. doi: 10.1186/s13045-017-0408-0
42. Zhang H, Yue R, Zhao P, Yu X, Li J, Ma G, et al. Proinflammatory follicular helper T cells promote immunoglobulin G secretion, suppress regulatory B cell development, and correlate with worse clinical outcomes in gastric cancer. *Tumour Biol.* (2017) 39. doi: 10.1177/1010428317705747
43. Wang Y, Xiao H, Wang C, Wu H, He H, Yao C, et al. M-phase phosphoprotein 8 promotes gastric cancer growth and metastasis via p53/Bcl-2 and EMT-related signaling pathways. *J Cell Biochem.* (2020) 121:2330–42. doi: 10.1002/jcb.29456
44. Wei GH, Wang X. lncRNA MEG3 inhibit proliferation and metastasis of gastric cancer via p53 signaling pathway. *Eur Rev Med Pharmacol Sci.* (2017) 21:3850–56.

Conflict of Interest: The authors declare that the research was conducted in the absence of any commercial or financial relationships that could be construed as a potential conflict of interest.

Publisher's Note: All claims expressed in this article are solely those of the authors and do not necessarily represent those of their affiliated organizations, or those of the publisher, the editors and the reviewers. Any product that may be evaluated in this article, or claim that may be made by its manufacturer, is not guaranteed or endorsed by the publisher.

Copyright © 2022 Di, Chai, Yang, Dong, Jiang and Ji. This is an open-access article distributed under the terms of the Creative Commons Attribution License (CC BY). The use, distribution or reproduction in other forums is permitted, provided the original author(s) and the copyright owner(s) are credited and that the original publication in this journal is cited, in accordance with accepted academic practice. No use, distribution or reproduction is permitted which does not comply with these terms.