



## OPEN ACCESS

APPROVED BY  
Frontiers Editorial Office,  
Frontiers Media SA, Switzerland

\*CORRESPONDENCE  
Wee Shiong Lim  
✉ wee\_shiong\_lim@ttsh.com.sg

SPECIALTY SECTION  
This article was submitted to  
Geriatric Medicine,  
a section of the journal  
Frontiers in Medicine

RECEIVED 22 November 2022  
ACCEPTED 12 December 2022  
PUBLISHED 22 December 2022

CITATION  
Tan RS, Goh EF, Wang D, Chan RCL,  
Zeng Z, Yeo A, Pek K, Kua J, Wong WC,  
Shen Z and Lim WS (2022)  
Corrigendum: Effectiveness and  
usability of the system for assessment  
and intervention of frailty for  
community-dwelling pre-frail older  
adults: A pilot study.  
*Front. Med.* 9:1105448.  
doi: 10.3389/fmed.2022.1105448

COPYRIGHT  
© 2022 Tan, Goh, Wang, Chan, Zeng,  
Yeo, Pek, Kua, Wong, Shen and Lim.  
This is an open-access article  
distributed under the terms of the  
[Creative Commons Attribution License](#)  
(CC BY). The use, distribution or  
reproduction in other forums is  
permitted, provided the original  
author(s) and the copyright owner(s)  
are credited and that the original  
publication in this journal is cited, in  
accordance with accepted academic  
practice. No use, distribution or  
reproduction is permitted which does  
not comply with these terms.

# Corrigendum: Effectiveness and usability of the system for assessment and intervention of frailty for community-dwelling pre-frail older adults: A pilot study

Ren Siang Tan<sup>1</sup>, Eileen Fabia Goh<sup>1</sup>, Di Wang<sup>2</sup>,  
Robin Chung Leung Chan<sup>2</sup>, Zhiwei Zeng<sup>2</sup>, Audrey Yeo<sup>1</sup>,  
Kalene Pek<sup>1</sup>, Joanne Kua<sup>1,3</sup>, Wei Chin Wong<sup>1,3,4</sup>, Zhiqi Shen<sup>2,5</sup>  
and Wee Shiong Lim<sup>1,3,4\*</sup>

<sup>1</sup>Institute of Geriatrics and Active Ageing, Tan Tock Seng Hospital, Singapore, Singapore, <sup>2</sup>Joint NTU-UBC Research Centre of Excellence in Active Living for the Elderly, Nanyang Technological University, Singapore, Singapore, <sup>3</sup>Department of Geriatric Medicine, Tan Tock Seng Hospital, Singapore, Singapore, <sup>4</sup>Lee Kong Chian School of Medicine, Nanyang Technological University, Singapore, Singapore, <sup>5</sup>School of Computer Science and Engineering, Nanyang Technological University, Singapore, Singapore

## KEYWORDS

frailty, pre-frail, older adults, community research, health technology, intervention, usability

A corrigendum on  
[Effectiveness and usability of the system for assessment and intervention of frailty for community-dwelling pre-frail older adults: A pilot study](#)

by Tan, R. S., Goh, E. F., Wang, D., Chan, R. C. L., Zeng, Z., Yeo, A., Pek, K., Kua, J., Wong, W. C., Shen, Z., and Lim, W. S. (2022). *Front. Med.* 9:955785. doi: 10.3389/fmed.2022.955785

In the published article, there were errors in the order of [Figures 1–5](#) as published. The corrected [Figures 1–5](#) and its captions appear below.

In the published article, [Figures 2, 3](#) contain identifiable images and the written informed consent obtained was not clearly stated in the **Ethics statement**.

A correction has been made to the **Ethics statement** section, paragraph 1. This sentence previously stated:

“The studies involving human participants were reviewed and approved by National Healthcare Group IRB. The patients/participants provided their written informed consent to participate in this study.”

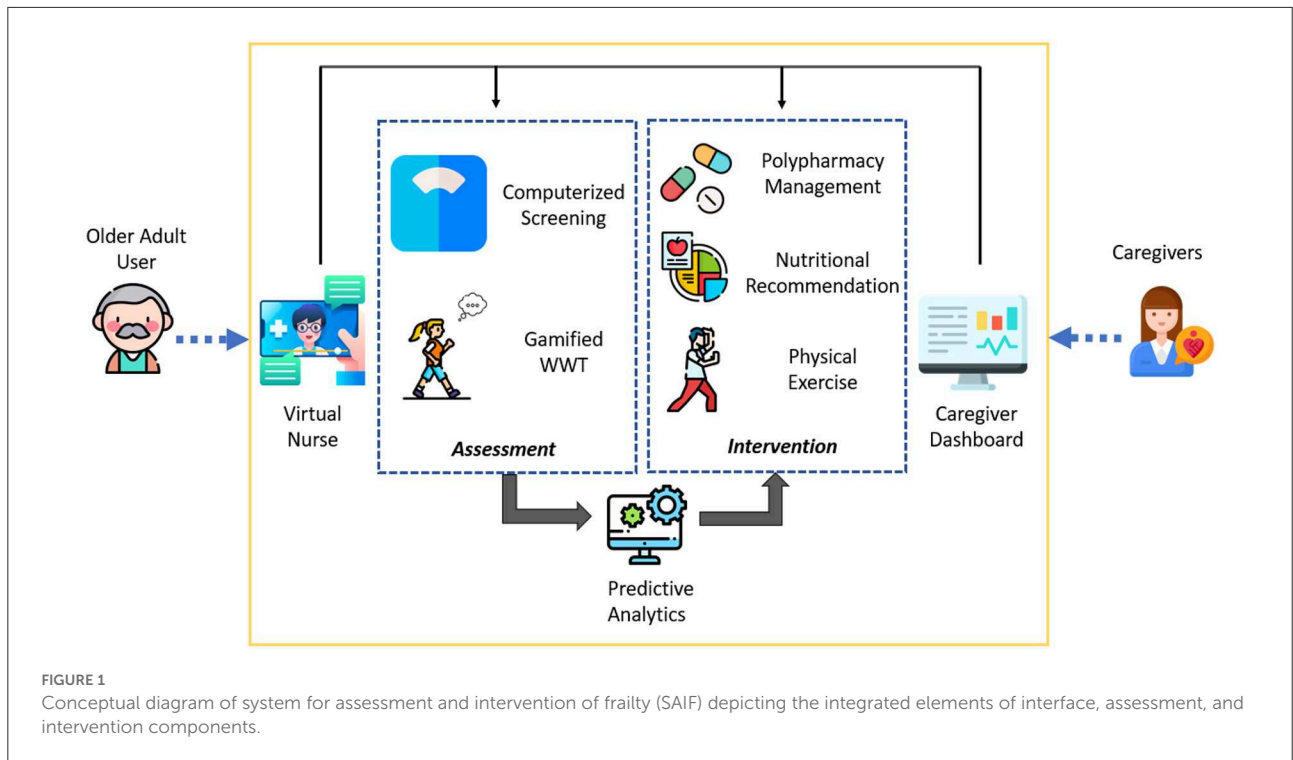
The corrected sentence appears below:

“The studies involving human participants were reviewed and approved by National Healthcare Group IRB. Written informed consent to participate in this study was obtained from study participants. In addition, written informed consent was obtained from the individual for the publication of any potentially identifiable images or data included in this article.”

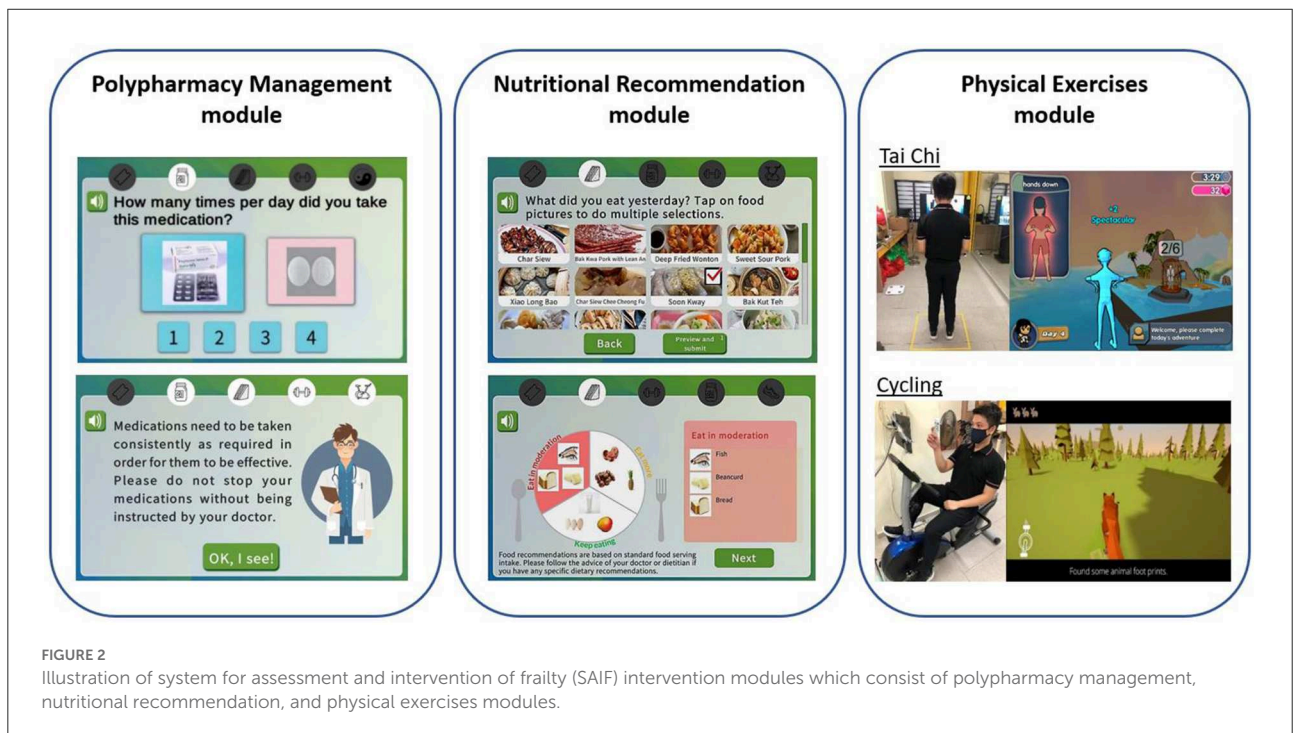
The authors apologize for this error and state that this does not change the scientific conclusions of the article in any way. The original article has been updated.

## Publisher's note

All claims expressed in this article are solely those of the authors and do not necessarily represent those of their affiliated organizations, or those of the publisher, the editors and the reviewers. Any product that may be evaluated in this article, or claim that may be made by its manufacturer, is not guaranteed or endorsed by the publisher.



**FIGURE 1** Conceptual diagram of system for assessment and intervention of frailty (SAIF) depicting the integrated elements of interface, assessment, and intervention components.



**FIGURE 2** Illustration of system for assessment and intervention of frailty (SAIF) intervention modules which consist of polypharmacy management, nutritional recommendation, and physical exercises modules.

