



Case Report: Membranous Nephropathy Secondary to Cobalamin C Disease

Qiang Wang^{1†}, Qi Wang^{1†}, Yanxia Gao¹, Chenquan Tang², Zhaoli Gao¹ and Zhao Hu^{3*}

¹ Department of Nephrology, Qilu Hospital (Qingdao), Cheeloo College of Medicine, Shandong University, Qingdao, China,

² Department of Nephrology, Suzhou Integrated Traditional Chinese and Western Medicine Hospital, Suzhou, China,

³ Department of Nephrology, Qilu Hospital, Cheeloo College of Medicine, Shandong University, Jinan, China

Background: Mutation of *MMACHC* causes inherited cobalamin C disease with methylmalonic academia (MMA) and homocysteinemia. Renal complications may also be present in patients with this deficiency. However, membranous nephropathy secondary to cobalamin C disease has not been reported to date.

Case Presentation: We encountered a 17-year-old female patient with a trans-compound mutation of *MMACHC* who presented with membranous nephropathy, MMA, homocysteinemia, and hyperuricemia. The mutations of c.80A>G (chr1:45966084) and c.482G>A (chr1:45974520) (predicting p.Gln27Arg and p.Arg161Gln missense changes at the amino acid level) had been inherited from her father and mother, respectively. Hydroxocobalamin, betaine, and L-carnitine were administered. The patient achieved complete remission of the membranous nephropathy and resolution of the MMA, homocysteinemia, and hyperuricemia.

Conclusion: Membranous nephropathy secondary to cobalamin C disease is reversible with timely intervention.

Keywords: secondary membranous nephropathy, cobalamin C disease, *MMACHC*, methylmalonic academia, hydroxylcobalamin

OPEN ACCESS

Edited by:

Sophia Lionaki,
National and Kapodistrian University
of Athens, Greece

Reviewed by:

Jia-Wei He,
Beijing Hospital, China
Mario Bonomini,
University of Studies G. d'Annunzio
Chieti and Pescara, Italy

*Correspondence:

Zhao Hu
sdhuzhao@vip.126.com

[†]These authors have contributed
equally to this work

Specialty section:

This article was submitted to
Nephrology,
a section of the journal
Frontiers in Medicine

Received: 01 November 2021

Accepted: 30 December 2021

Published: 21 January 2022

Citation:

Wang Q, Wang Q, Gao Y, Tang C,
Gao Z and Hu Z (2022) Case Report:
Membranous Nephropathy Secondary
to Cobalamin C Disease.
Front. Med. 8:807017.
doi: 10.3389/fmed.2021.807017

INTRODUCTION

Many glomerular diseases are complicated by poor renal outcomes, especially some inherited diseases such as Alport syndrome. However, certain types of glomerular injury secondary to some inherited diseases may be reversible. Mutation of *MMACHC* causes cobalamin C disease (cblC), which is the most common genetic defect of cobalamin metabolism. The downstream intracellular synthesis of adenosylcobalamin and methylcobalamin, coenzymes for the enzymes methylmalonyl-coenzyme A mutase and methionine synthase, are thus disturbed, causing elevated methylmalonic acid and homocysteine with decreased methionine production. This disorder results in heterogeneous clinical presentations, both early-onset and late-onset, in patients of a wide range of ages. The main features are growth retardation, poor feeding and lethargy, hemolytic uremic syndrome, chronic thrombotic microangiopathy, developmental delay, and progressive encephalopathy and leukoencephalopathy (1).

Renal complications associated with cblC are uncommon and often do not represent the initial presentation, making them more likely to be ignored. Of these complications, thrombotic microangiopathy, chronic tubulointerstitial nephritis, and renal tubular acidosis are commonly

reported (2). However, related glomerular diseases are infrequent; only one case of focal segmental glomerulosclerosis and one case of membranoproliferative glomerulonephritis have been reported to date (3, 4). Membranous nephropathy (MN) associated with cblC has not been identified. We herein report a proband who presented with MN secondary to trans-compound mutations of *MMACHC* and was successfully treated with vitamin B replacement therapy.

CASE PRESENTATION

A 17-year-old girl presented to our nephrology department with a 7-month history of intermittent lower extremity edema, proteinuria, and hematuria. An initial renal biopsy performed at another hospital 4 months before presentation to our center indicated possible IgA nephropathy, and she was therefore prescribed monotherapy with the angiotensin receptor blocker valsartan. However, her clinical presentation was refractory to this treatment. She reported no history of drug use, infections, or malignancy and had no family history of hepatitis B or C, HIV, rheumatic disease, or tumors. She was normotensive, and a general physical examination and fundoscopic examination were unremarkable. Her lung fields were clear with no rales or fremitus. A 24-h urine protein test revealed a total protein level of 2.75 g. Urinalysis revealed 24 erythrocytes per high-power field. Her serum concentrations of urea, creatinine, and albumin were within normal limits. Autoantibody test results were unremarkable. Serum antiphospholipase A2 receptor antibodies were negative. The serological results are shown in **Supplementary Table 1**. Renal ultrasound findings were normal.

The histopathological analysis of the previous renal biopsy specimen was revisited. The biopsy revealed 22 glomeruli, 1 (4.5%) of which showed global sclerosis and 1 (4.5%) of which showed focal segmental sclerosis. Mild mesangial expansion, glomerular basement membrane thickening, endothelial swelling, focally swollen podocytes, and hypercellularity were observed (**Figure 1**). Swelling of the tubular epithelium was also noted. A patchy infiltration of lymphocytes and monocytes was present within the interstitial area. There was no interstitial fibrosis. The capillary walls of the interstitial area showed no lesions. An immunohistochemical assay showed granular deposits along the capillary walls for IgM, C3, C1q, and kappa and lambda light chains as well as mild staining for IgG and IgA. IgG subclass staining showed segmental positivity for IgG1 but negativity for IgG2, IgG3, IgG4, and antiphospholipase A2 receptor.

The granular deposits along the outside of the capillary walls noted on the immunohistochemical assay, especially for lambda and C1q, indicated immune complexes along the capillaries. Spike-like projections were noted at the 3-o'clock position under silver staining, indicating a spiked glomerular basement membrane around the immune complexes. Masson

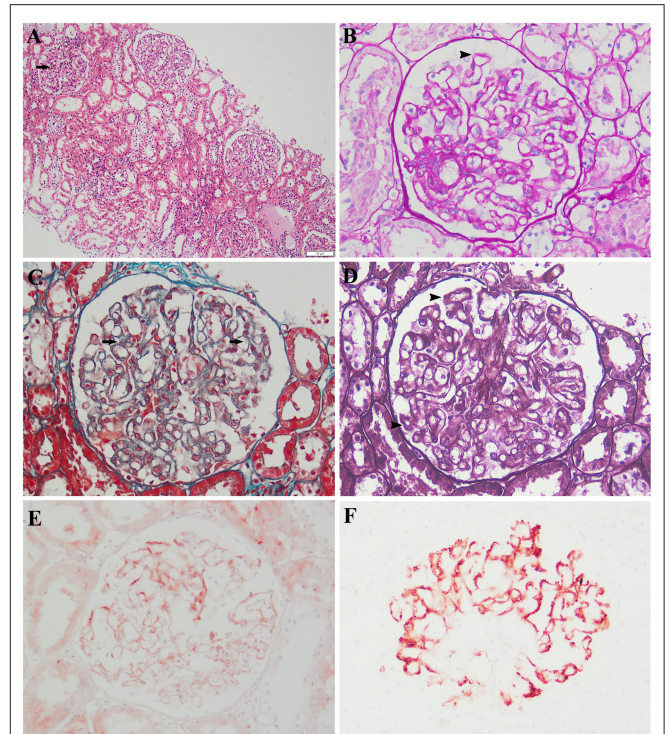
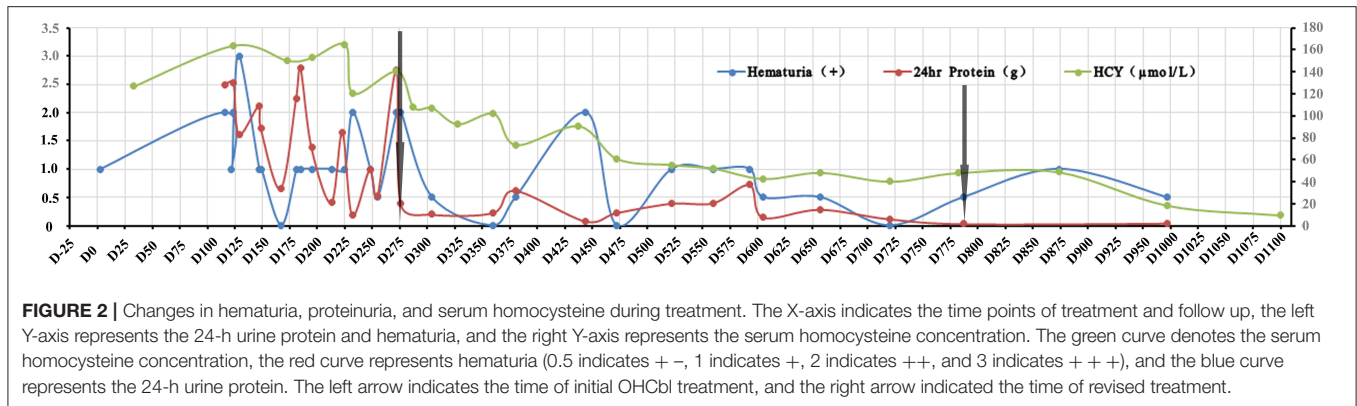


FIGURE 1 | Histologic and immunohistochemical features of renal lesions. **(A)** Segmental mesangial expansion (hematoxylin and eosin; original magnification, $\times 100$). **(B,D)** Slight global glomerular basement membrane thickening (periodic acid-Schiff and Jones methenamine silver, respectively; original magnification, $\times 200$). **(C)** Scattered fuchsinophilic deposits (Masson's trichrome; original magnification, $\times 200$). Immunohistochemical assay (original magnification, $\times 200$) showed **(E)** mild staining for IgG and **(F)** fine granular deposits of c1q.

staining showed scattered fuchsinophilic deposits, which denoted immune complexes. The IgG deposits in patients with primary MN are predominantly IgG4, whereas other isotypes have been identified in certain causes of secondary MN (5, 6). In this case, the lesions of mesangial cells, endothelial cells, and podocytes were inconsistent with primary MN. Lupus nephritis was excluded because of the absence of systemic manifestations of lupus, and all immunoserological markers were negative except the antinuclear antibody titer (1:100). Neither a solid tumor nor hematological malignancy was shown by computed tomography or hematological examinations, and all tumor biomarkers were negative. These findings led to the diagnosis of secondary MN.

The peak serum homocysteine concentration was 164 $\mu\text{mol/L}$ (reference range, $<15 \mu\text{mol/L}$) (**Figure 2**), and the uric acid concentration was 625.7 $\mu\text{mol/L}$ (reference range, 50–410 $\mu\text{mol/L}$). The blood propionyl-L-carnitine concentration was 4.39 $\mu\text{mol/L}$ (reference range, 0.35–3.36 $\mu\text{mol/L}$), the ratio of propionyl-L-carnitine to acetyl-L-carnitine was 0.38 (reference range, 0.02–0.25), and the urine methylmalonic

Abbreviations: cblC, cobalamin C disease; MMA, methylmalonic acidemia; OHcbl, hydroxocobalamin.



acid concentration was $5.1 \mu\text{mol/L}$ (reference range, $0.2\text{--}3.6 \mu\text{mol/L}$). Genetic testing revealed compound heterozygous mutations of *MMACHC* (*NM_015506*), which confirmed late-onset cblC. The family pedigree is shown in **Figure 3A**. None of the patient's family members showed clinical symptoms. The proband was a compound heterozygote for two transitions: one in exon 1 (chr1:45966084, c.80A>G) and the other in exon 4 (chr1:45974520, c.482G>A) of *MMACHC* (**Figure 3B**). These predicted p.Gln27Arg and p.Arg161Gln missense changes at the amino acid level. The proband's father, mother, and brother were heterozygous for Q27R, R161Q, and Q27R, respectively. Therefore, the MN was considered secondary to a cobalamin-related remethylation disorder. The patient was treated with hydroxocobalamin (OHCbl) at 1 mg/week intramuscularly, betaine at 1,000 mg/day, and L-carnitine at 2,000 mg/day orally. Her serum homocysteine concentration gradually decreased, and the proteinuria and hematuria resolved during a period of over 1 year. Because of weight gain, however, the dosages were subsequently changed to OHCbl at 1 mg twice a week intramuscularly, betaine at 1,000 mg twice a day, and L-carnitine at 2,000 mg twice a day orally. At the 36-month follow-up visit, the patient's serum homocysteine concentration was $9.57 \mu\text{mol/L}$ and her serum uric acid concentration was $330.91 \mu\text{mol/L}$ (**Figure 2**). Her urinary protein concentration and erythrocyte count were within the reference ranges. The patient is being followed-up to date.

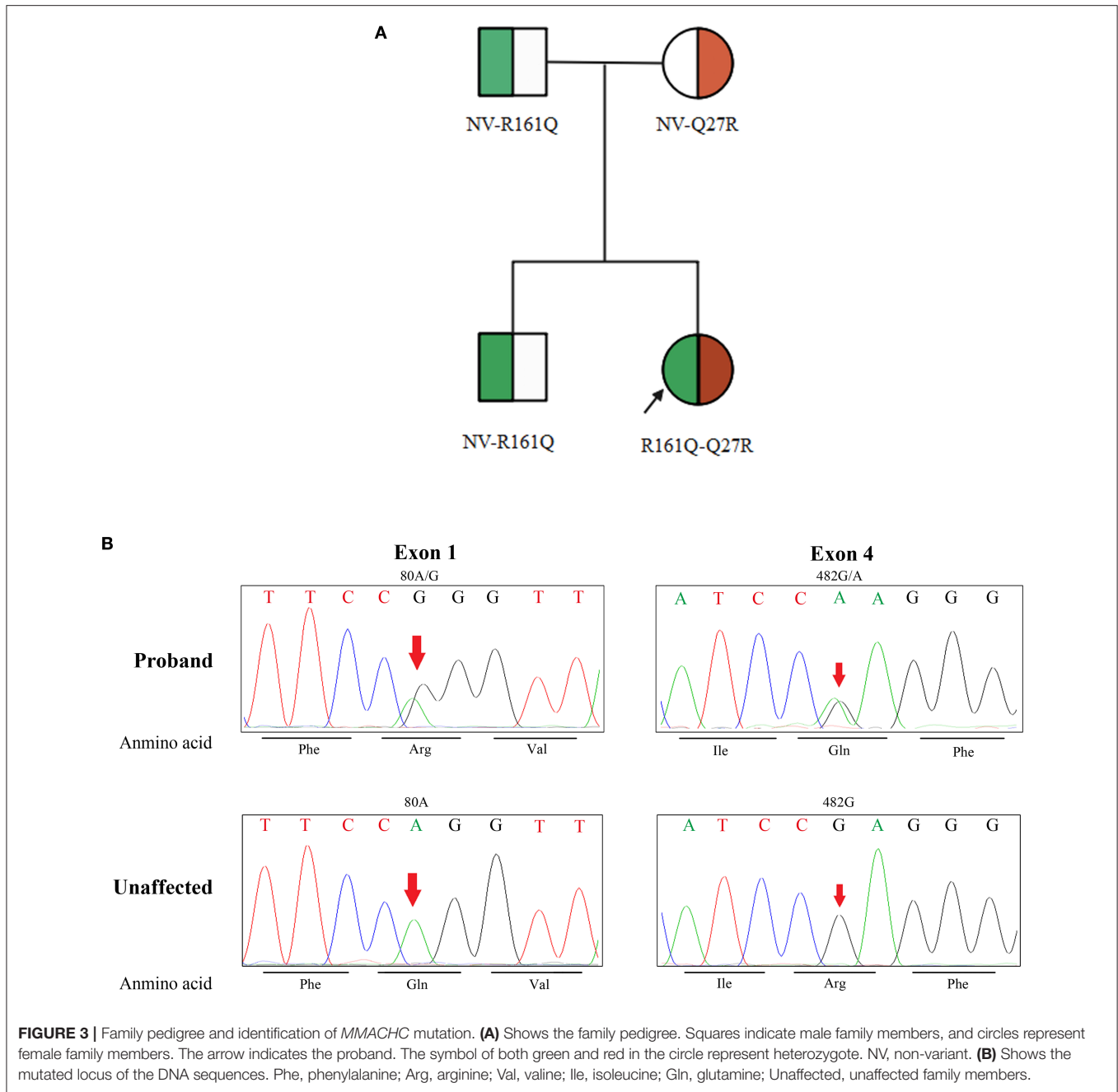
DISCUSSION

We have herein described a young female patient with secondary MN associated with compound heterozygous mutations of *MMACHC*. A high serum homocysteine concentration was noted after 4 months of treatment with an angiotensin receptor blocker. Blood and urine organic acid testing as well as genetic sequencing were performed. The pathological features of this case were consistent with secondary MN. The patient had no other relevant history. The findings in this case led to a definitive diagnosis of cblC. However, given the deposition of multiple immunoglobulins and C1q as well as the patient's age, we will

continue to follow up this patient because of the possibility of lupus in the future. The patient was treated with OHCbl, betaine, and L-carnitine, effectively resolving her renal lesions, proteinuria, and hematuria. The patient's treatment outcome also supports our conclusion that the glomerular lesions were secondary to a deficiency of cobalamin metabolism.

cblC is an inborn error of cobalamin metabolism with autosomal recessive inheritance. The proband in this case was a trans-compound heterozygote with c.80A>G and c.482G>A mutations from both parents. Neither mutation has been proven to be associated with renal involvement. Neither variant is a single-nucleotide polymorphism, and both are more common in Chinese individuals (7, 8). The function of *MMACHC* protein is impaired in affected patients, causing methylmalonic academia (MMA) and homocysteinemia. This disorder results in diverse clinical presentations, early-onset or late-onset, in patients of a wide range of ages. Patients with c.80A>G mutation seem to show early-onset signs (8), whereas c.482G>A mutation is usually associated with a late-onset pattern (9). Our patient had a combination of c.80A>G and c.482G>A and developed late-onset signs.

MMA and homocysteinemia are common features of cblC, and the clinical manifestations can be diverse. Neurological symptoms are most often seen. Kidney injury accompanying these initial presentations in patients with early-onset disease would be more likely to be noticed by pediatric doctors (10). Diagnosis of the late-onset type is still challenging. In the present case, the diagnosis took 9 months after initiation of the renal injury. Some patients are not diagnosed until their condition has progressed to irreversible kidney injury (11). We previously described another 20-year-old female patient with IgA nephropathy associated with cblC who presented with neurological symptoms. The patient was homozygous for c.452A>G (p.His151Arg). Her serum creatinine concentration was 3.02 mg/dL by the time of diagnosis (12). It is of great importance to consider these inborn errors of cobalamin metabolism when unexplained renal injury is accompanied by neurological presentations and MMA and/or homocysteinemia.



The treatment of renal complications in patients with late-onset disease is similar to that in patients without renal involvement. The goal is to target the primary disease, normalize the serum methionine and homocysteine concentrations, and resolve the MMA. OHCbl and betaine treatment should be initiated once cblC is suspected (1). Folinic acid and levocarnitine are alternative options in some patients. Treatment by a low-protein diet in patients with cblC is controversial because the homocysteine content in dietary protein is very low (13). Thus, no diet control was applied in the present case. According to the 2021 Kidney Disease:

Improving Global Outcomes guideline, complete remission is defined as a first-morning or 24-h protein/creatinine ratio of ≤ 200 mg/g (≤ 20 mg/mmol) (or negative or trace dipstick) on three or more consecutive occasions (14). Complete remission of the renal injury and normalization of cobalamin metabolism was achieved in this case. Considering the poor renal outcome of glomerular diseases, it is noteworthy that the glomerular injury secondary to cblC is reversible with timely treatment.

Interestingly, our patient's serum uric acid concentration gradually returned to the reference range as the serum

CONCLUSION

We have reported the first known case of MN secondary to cblC, which was found to be reversible with timely intervention. Further follow-up and additional cases will be necessary to clarify the pathogenesis of secondary MN.

DATA AVAILABILITY STATEMENT

The original contributions presented in the study are included in the article/**Supplementary Materials**, further inquiries can be directed to the corresponding author/s.

ETHICS STATEMENT

The studies involving human participants were reviewed and approved by the Ethics Committee of Qilu Hospital (Qingdao), Cheeloo College of Medicine, Shandong University. Written informed consent to participate in this study was provided by the participants' legal guardian/next of kin.

AUTHOR CONTRIBUTIONS

ZH: study design and manuscript revision. QiaW: manuscript writing. YG, QiW, and ZG: data collection. CT: figure editing.

REFERENCES

- Carrillo-Carrasco N, Chandler RJ, Venditti CP. Combined methylmalonic acidemia and homocystinuria, cblC type. I. Clinical presentations, diagnosis and management. *J Inherit Metab Dis.* (2012) 35:91–102. doi: 10.1007/s10545-011-9364-y
- Morath MA, Horster F, Sauer SW. Renal dysfunction in methylmalonic acidurias: review for the pediatric nephrologist. *Pediatr Nephrol.* (2013) 28:227–35. doi: 10.1007/s00467-012-2245-2
- Brandstetter Y, Weinhouse E, Splaingard ML, Tang TT. Cor pulmonale as a complication of methylmalonic acidemia and homocystinuria (Cbl-C type). *Am J Med Genet.* (1990) 36:167–71. doi: 10.1002/ajmg.1320360208
- Brunelli SM, Meyers KE, Guttenberg M, Kaplan P, Kaplan BS. Cobalamin C deficiency complicated by an atypical glomerulopathy. *Pediatr Nephrol.* (2002) 17:800–3. doi: 10.1007/s00467-002-0895-1
- Hemminger J, Nadasdy G, Satskar A, Brodsky SV, Nadasdy T. IgG subclass staining in routine renal biopsy material. *Am J Surg Pathol.* (2016) 40:617–26. doi: 10.1097/PAS.0000000000000605
- Yeo MK, Kim YH, Choi DE, Choi SY, Kim KH, Suh KS. The usefulness of phospholipase A2 receptor and IgG4 detection in differentiation primary membranous nephropathy from secondary membranous nephropathy in renal biopsy. *Appl Immunohistochem Mol Morphol.* (2018) 26:591–8. doi: 10.1097/PAI.0000000000000460
- Hu S, Mei S, Liu N, Kong X. Molecular genetic characterization of cblC defects in 126 pedigrees and prenatal genetic diagnosis of pedigrees with combined methylmalonic aciduria and homocystinuria. *BMC Med Genet.* (2018) 19:154. doi: 10.1186/s12881-018-0666-x
- Liu MY, Yang YL, Chang YC, Chiang SH, Lin SP, Han LS, et al. Mutation spectrum of MMACHC in Chinese patients with combined methylmalonic aciduria and homocystinuria. *J Hum Genet.* (2010) 55:621–6. doi: 10.1038/jhg.2010.81
- Lerner-Ellis JP, Anastasio N, Liu J, Coelho D, Suormala T, Stucki M, et al. Spectrum of mutations in MMACHC, allelic expression, and evidence for genotype-phenotype correlations. *Hum Mutat.* (2009) 30:1072–81. doi: 10.1002/humu.21001
- Chen M, Zhuang J, Yang J, Wang D, Yang Q. Atypical hemolytic uremic syndrome induced by CblC subtype of methylmalonic acidemia: a case report and literature review. *Medicine.* (2017) 96:e8284. doi: 10.1097/MD.00000000000008284
- Chen Q, Bao H, Wu H, Zhao S, Huang S, Zhao F. Diagnosis of cobalamin C deficiency with renal abnormality from onset in a Chinese child by next generation sequencing: a case report. *Exp Ther Med.* (2017) 14:3637–43. doi: 10.3892/etm.2017.4970
- Sun Y, Jiang B, Zhao YY, Hu Zhao. Renal injury as the first manifestation of late-onset methylmalonic acidemia (MMA) and homocystinemia: a case report. *Chin J Nephrol.* (2017) 33:456–9. doi: 10.3760/cma.j.issn.1001-7097.2017.06.010
- Axelsson J. Homocysteine and food. *Lakartidningen.* (2006) 103:3390.
- Kidney Disease: improving Global Outcomes (KDIGO) Glomerular Diseases Work Group. KDIGO 2021 clinical practice guideline for the management of glomerular diseases. *Kidney Int.* (2021) 100:S1–276. doi: 10.1016/j.kint.2021.05.021
- Palmer JL, Abeles RH. The mechanism of action of S-adenosylhomocysteinase. *J Biol Chem.* (1979) 254:1217–26. doi: 10.1016/S0021-9258(17)34190-X
- Cohen E, Levi A, Vecht-Lifshitz SE, Goldberg E, Garty M, Krause I. Assessment of a possible link between hyperhomocysteinemia and hyperuricemia. *J Invest Med.* (2015) 63:534–8. doi: 10.1097/JIM.0000000000000152
- Liu YL, Pan Y, Wang X, Fan CY, Zhu Q, Li JM, et al. Betaine reduces serum uric acid levels and improves kidney function in hyperuricemic mice. *Planta Med.* (2014) 80:39–47. doi: 10.1055/s-0033-1360127
- Wang SJ, Yan CZ, Liu YM, Zhao YY. Late-onset cobalamin C deficiency Chinese sibling patients with neuropsychiatric presentations. *Metab Brain Dis.* (2018) 33:829–35. doi: 10.1007/s11011-018-0189-3
- Herrmann W, Obeid R. Cobalamin deficiency. *Subcell Biochem.* (2012) 56:301–22. doi: 10.1007/978-94-007-2199-9_16
- Huemer M, Diodato D, Schwahn B, Schiff M, Bandeira A, Benoist JE, et al. Guidelines for diagnosis and management of the

All authors contributed to the article and approved the submitted version.

FUNDING

This study was supported by the Key Research and Development Project of Shandong Province (2017GSF21116). The funder had no role in the study design, data collection and analysis, decision to publish, or preparation of the manuscript.

ACKNOWLEDGMENTS

We thank Dr. Junhui Zhen from Qilu Hospital, Shandong University for performing the renal pathological analysis. We also thank Dr. Shihong Shao from Qingdao University Affiliated Hospital for providing assistance in this case. Finally, we thank Angela Morben, DVM, ELS, from Liwen Bianji (Edanz), for editing the English text of a draft of this manuscript.

SUPPLEMENTARY MATERIAL

The Supplementary Material for this article can be found online at: <https://www.frontiersin.org/articles/10.3389/fmed.2021.807017/full#supplementary-material>

cobalamin-related remethylation disorders cblC, cblD, cblE, cblF, cblG, cblJ and MTHFR deficiency. *J Inherit Metab Dis.* (2017) 40:21–48. doi: 10.1007/s10545-016-9991-4

Conflict of Interest: The authors declare that the research was conducted in the absence of any commercial or financial relationships that could be construed as a potential conflict of interest.

Publisher's Note: All claims expressed in this article are solely those of the authors and do not necessarily represent those of their affiliated organizations, or those of

the publisher, the editors and the reviewers. Any product that may be evaluated in this article, or claim that may be made by its manufacturer, is not guaranteed or endorsed by the publisher.

Copyright © 2022 Wang, Wang, Gao, Tang, Gao and Hu. This is an open-access article distributed under the terms of the Creative Commons Attribution License (CC BY). The use, distribution or reproduction in other forums is permitted, provided the original author(s) and the copyright owner(s) are credited and that the original publication in this journal is cited, in accordance with accepted academic practice. No use, distribution or reproduction is permitted which does not comply with these terms.