



# Serum Phosphorus and Albumin in Patients Undergoing Peritoneal Dialysis: Interaction and Association With Mortality

Naya Huang<sup>1†</sup>, Huiyan Li<sup>1†</sup>, Li Fan<sup>1</sup>, Qian Zhou<sup>2</sup>, Dongying Fu<sup>1</sup>, Lin Guo<sup>1</sup>, Chunyan Yi<sup>1</sup>, Xueqing Yu<sup>1,3</sup> and Haiping Mao<sup>1\*</sup>

<sup>1</sup> Department of Nephrology, The First Affiliated Hospital, Sun Yat-sen University, Key Laboratory of Nephrology, Ministry of Health of China, Guangdong Provincial Key Laboratory of Nephrology, Guangzhou, China, <sup>2</sup> Department of Medical Statistics, Clinical Trials Unit, The First Affiliated Hospital, Sun Yat-sen University, Guangzhou, China, <sup>3</sup> Department of Nephrology, Guangdong Provincial People's Hospital, Guangzhou, China

## OPEN ACCESS

### Edited by:

John William Larkin,  
Fresenius Medical Care, United States

### Reviewed by:

Xiaoling Ye,  
Renal Research Institute,  
United States  
Jeroen Peter Kooman,  
Maastricht University Medical  
Centre, Netherlands

### \*Correspondence:

Haiping Mao  
maohp@mail.sysu.edu.cn

<sup>†</sup>These authors have contributed  
equally to this work and share first  
authorship

### Specialty section:

This article was submitted to  
Nephrology,  
a section of the journal  
Frontiers in Medicine

Received: 18 August 2021

Accepted: 29 October 2021

Published: 01 December 2021

### Citation:

Huang N, Li H, Fan L, Zhou Q, Fu D,  
Guo L, Yi C, Yu X and Mao H (2021)  
Serum Phosphorus and Albumin in  
Patients Undergoing Peritoneal  
Dialysis: Interaction and Association  
With Mortality. *Front. Med.* 8:760394.  
doi: 10.3389/fmed.2021.760394

Hyperphosphatemia and hypoalbuminemia confer worse clinical outcomes, whether these risk factors interact to predispose to mortality is unclear. In this prospective cohort study, 2,118 patients undergoing incident continuous ambulatory peritoneal dialysis (CAPD) were enrolled and categorized into four groups based on the changing point regarding mortality at 1.5 mmol/L for serum phosphorus and 35 g/L for serum albumin. Risks of all-cause and cardiovascular mortality were examined independently and interactively in overall and subgroups. There was no association between serum phosphorus with all-cause and cardiovascular mortality, but significant interactions ( $p = 0.02$ ) between phosphorus and albumin existed in overall population. Patients in subgroup with high phosphorus and low albumin were at greater risk of all-cause (HR 1.95, 95%CI 1.27–2.98,  $p = 0.002$ ) but not cardiovascular mortality (HR 0.37, 95%CI 0.10–1.33,  $p = 0.13$ ), as compared to those with low phosphorus and high albumin. In contrast, patients with both low parameters had a higher risk of all-cause (HR 1.75, 95%CI 1.22–2.50,  $p = 0.002$ ) and cardiovascular mortality (HR 1.92, 95%CI 1.07–3.45,  $p = 0.03$ ). Notably, an elevated risk of both all-cause and cardiovascular mortality was observed in those with low serum albumin, irrespective of phosphorus levels, suggesting low albumin may be useful to identify a higher-risk subgroup of patients undergoing CAPD with different serum phosphorus levels.

**Keywords:** serum phosphorus, albumin, peritoneal dialysis, interaction, mortality

## INTRODUCTION

Hyperphosphatemia is present in almost 40% patients undergoing dialysis (1–3). Previous studies indicate that a higher serum phosphorus level is associated with an increased risk of cardiovascular events, cardiovascular and all-cause mortality in patients undergoing pre-dialysis and dialysis (4–12). Restriction of dietary phosphorus intake is recommended as one of the key strategies in clinical management of hyperphosphatemia (13). Although foods with high protein are major source of phosphorus, control of dietary phosphorus by reducing protein intake has been linked to hypoalbuminemia (13–17). Because hypoalbuminemia is also a strong predictor of adverse clinical

outcomes in patients undergoing dialysis (1, 5, 7, 11, 18–22), how to balance the relation between serum phosphorus and albumin and their interactive impacts on mortality risk remains a clinical conundrum.

It has been demonstrated that restricting dietary protein intake to reduce serum phosphorus may cause greater mortality in patients undergoing dialysis and outweigh the benefit of controlled phosphorus (14, 16). A previous study on hemodialysis (HD) has shown that subjects whose protein intake decreased had higher mortality compared to those whose protein intake rose over 6 months, regardless of serum phosphorus levels (16). Moreover, Zitt et al. (20) proposed that albumin and phosphorus interact with each other in their associations with mortality in patients undergoing HD, and concurrent low phosphorus and high albumin was associated with the lowest risk of mortality in patients undergoing HD, but this relationship was not found in patients treated by peritoneal dialysis (PD) possibly because of small study population ( $n = 38$ ). Unlike HD, peritoneal protein loss *via* peritoneal effluent has been recognized as a major disadvantage in PD; patients on PD have lower serum albumin than those undergoing HD (23–26). Meanwhile, Mehrotra et al. (27) has found that serum albumin levels as a risk factor for mortality were shifted to a lower range in PD, as compared to HD. Hence, the interplay between phosphorus and albumin in patients on HD could not be interpreted in patients on PD. Furthermore, evidence from longitudinal studies regarding PD population is scarce. Therefore, we intended to evaluate serum phosphorus–albumin interaction and their associations with all-cause and cardiovascular mortality among patients treated by continuous ambulatory peritoneal dialysis (CAPD).

## MATERIALS AND METHODS

### Study Population

This was a single center, prospective, observational cohort study. All patients on incident CAPD at The First Affiliated Hospital, Sun Yat-Sen University were recruited from January 1, 2006 to December 31, 2016. Eligible participants were older than 18 years and had been on CAPD more than 3 months. Patients who were transferred from maintenance HD or failed kidney transplantation, had malignant disease, or refused to give written consent were excluded. All patients were treated with glucose-based Dianeal PD solution (Baxter Healthcare Ltd., Guangzhou, China). The study was approved by the Clinical Research Ethics Committee of The First Affiliated Hospital of Sun Yat-Sen University, and all patients provided written informed consent before enrollment.

### Data Collection

Baseline demographic, clinical, and laboratory data were collected within 3 months after CAPD commencement and obtained from our database. Demographic and clinical characteristics included age, sex, body mass index (BMI), blood pressure, primary cause of kidney failure, and concomitant disease. Cardiovascular disease was defined as the presence of ischemic heart disease, congestive heart failure, cerebrovascular disease, or peripheral vascular disease. Laboratory variables

included hemoglobin, serum albumin, serum phosphate, calcium, intact parathyroid hormone (iPTH), alkaline phosphatase (ALP), creatinine cholesterol, triglyceride, high-density lipoprotein (HDL), low-density lipoprotein (LDL), high-sensitivity C-reactive protein (hs-CRP), and residual renal function (RRF, defined as mean value of 24-h urinary urea and creatinine clearance). Normalized protein catabolic rate (nPCR), total Cr clearance, and total  $Kt/V_{urea}$  were calculated using the PD Adequest software (Baxter Healthcare Corporation, Deerfield, IL, USA).

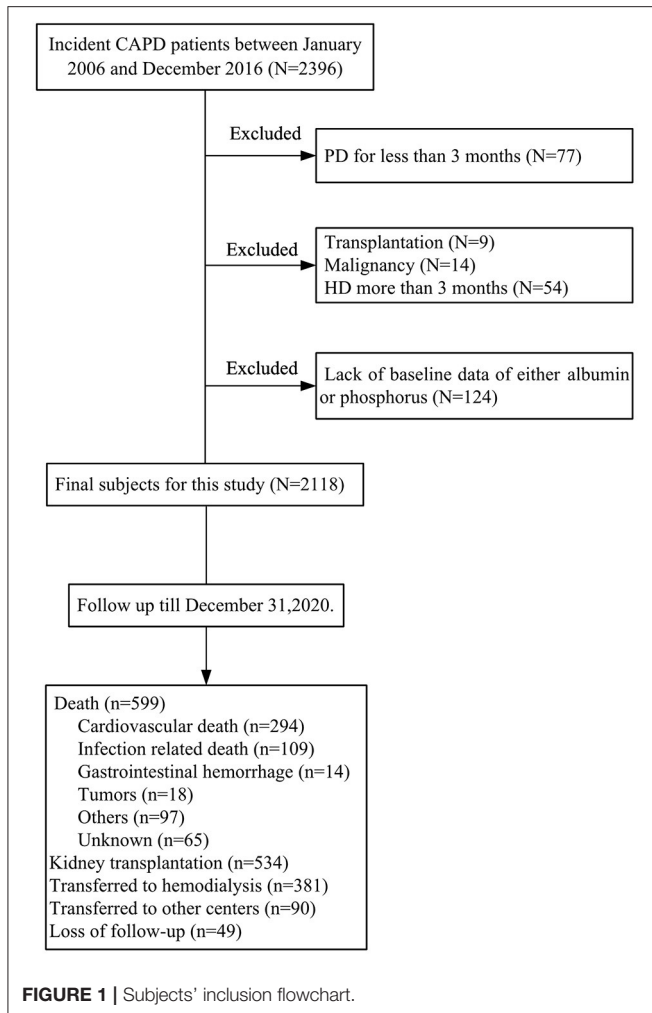
Medications including phosphorus binders, calcitriol, cinacalcet, and  $\alpha$ -Ketoacid were recorded. Patients were asked to undergo follow-up visits at the hospital every 3 months and subjected to a routine blood test, including serum albumin and serum phosphate.

### Outcomes

Our primary outcomes were all-cause and cardiovascular mortalities. Cardiovascular mortality was defined as death due to acute myocardial infarction, ischemic heart disease, cardiomyopathy, fatal arrhythmia, cardiac arrest, congestive heart failure, cerebrovascular accident (including intracranial hemorrhage and subdural hematoma, cerebral infarction), and peripheral vascular disease (28). All the patients were followed up until death, transferred to HD, kidney transplantation, transferred to other centers, loss of follow-up, or until December 31st, 2020.

### Statistical Analysis

Results of continuous variables were expressed as mean  $\pm$  SD for normal distribution and median (interquartile range, IQR) for skewed distribution. For categorical variables, the results were expressed as frequencies and percentages. Pairwise deletion (available case analysis) was used to address the missing data. Restrict cubic splines with five knots at the 5th, 35th, 50th, 65th, and 95th centiles were used to test the linearity of serum phosphorus and albumin and their relationships with all-cause and cardiovascular mortality. A two-line piecewise linear model was next fitted by trying all possible values to approach the change point with highest likelihood. Patients were categorized into four groups based on the changing point regarding mortality at 1.5 mmol/L for serum phosphorus and 35 g/L for serum albumin according to restricted cubic splines and subsequent piecewise-linear models, and subgroups were categorized as follows: low phosphorus and high albumin group with phosphorus  $<1.5$  mmol/L and albumin  $\geq 35$  g/L; low phosphorus and low albumin group with phosphorus  $<1.5$  mmol/L and albumin  $<35$  g/L; high phosphorus and high albumin group with phosphorus  $\geq 1.5$  mmol/L and albumin  $\geq 35$  g/L; and high phosphorus and low albumin group with phosphorus  $\geq 1.5$  mmol/L and albumin  $<35$  g/L. Further comparisons between the subgroups were analyzed using Kaplan–Meier curves and Cox regression models. Unadjusted and adjusted Cox proportional hazard regression models were used to evaluate the associations and interactions of serum phosphorus and albumin with all-cause and cardiovascular mortality. All statistical analyses were performed using the IBM

**TABLE 1 |** Baseline characteristics of study cohort.

Variable	Total (n = 2,118)
Age (years)	48 ± 16
Male gender	1,255 (59%)
<b>Primary kidney disease</b>	
Chronic glomerulonephritis	1,252 (59%)
Diabetic nephropathy	347 (16%)
Hypertensive nephrosclerosis	284 (13%)
Others	232 (11%)
<b>Comorbid conditions</b>	
History of cardiovascular disease	455 (22%)
History of DM	522 (25%)
BMI (kg/m <sup>2</sup> )	21.6 ± 3.2
SBP (mmHg)	139 ± 18
DBP (mmHg)	85 ± 24
Hemoglobin (g/L)	106 ± 23
Serum albumin (g/L)	37.0 ± 5.08
Calcium (mmol/L)	2.25 ± 0.22
Serum phosphorus (mmol/L)	1.45 ± 0.43
iPTH (pg/mL)	235 (114, 406)
Cholesterol (mmol/L)	4.9 (4.1–5.7)
Triglyceride (mmol/L)	1.72 ± 1.41
LDL-C (mmol/L)	2.95 ± 1.03
HDL-C (mmol/L)	1.20 ± 0.55
hs-CRP (mg/L)	1.6 (0.5–5.1)
nPCR (g/kg/d)	0.9 ± 0.3
RRF (ml/min/1.73 m <sup>2</sup> )	4 (2–17)
<b>Baseline medications</b>	
Phosphorus binders	849 (40%)
Calcitriol	635 (30%)
α-Ketoacid	777(37%)

The results are expressed as means ± SD for normal distributed continuous variables, median (25th percentile and 75th percentile) for skew continuous variables or number (%) for categorical variables.

BMI, body mass index; DBP, diastolic blood pressure; DM, diabetes mellitus; HDL-C, high-density lipoprotein cholesterol; hs-CRP, high sensitive C-reactive protein; iPTH, intact parathyroid hormone; LDL-C, low-density lipoprotein cholesterol; nPCR, normalized protein catabolic rate; RRF, residual renal function; SBP, systolic blood pressure.

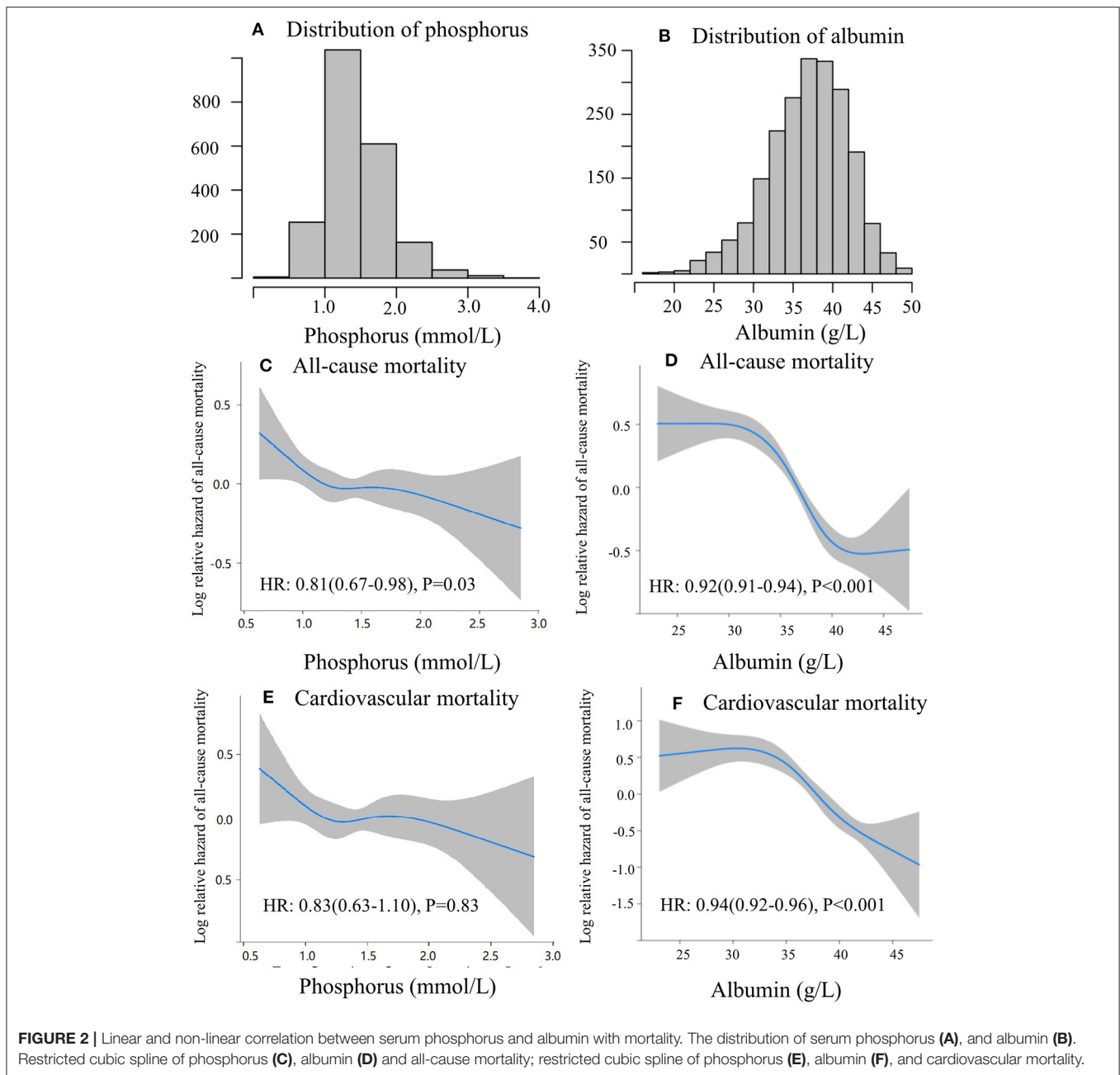
SPSS software, version 22.0 (IBM Corp., Armonk, NY, USA) and R 4.0.2 (<https://www.r-project.org/>). The  $p < 0.05$  was considered statistically significant.

## Baseline Characteristics

The screening flowchart of patients is shown in **Figure 1**. Between January 2006 and December 2016, a total of 2,118 patients who underwent consecutive CAPD were enrolled in the present study. Baseline characteristics, including demographic, clinical, laboratory values, and medications, are summarized in **Table 1**. Mean age of the study cohort was 48 ± 16 years, 59% of them were male, 25% had diabetes, and 22% had a history of cardiovascular disease. The baseline serum phosphorus level was 1.45 ± 0.43 mmol/L, serum albumin level was 37.0 ± 5.08 g/L, and nPCR was 0.9 ± 0.3 g/kg/day. Median level of RRF was 4 (2–17) ml/min/1.73 m<sup>2</sup>. Distributions of serum phosphorus and albumin are shown in **Figures 2A,B**. For medications, 849 (40%) patients were treated with phosphate binders, 635 (30%) received calcitriol, and 777 (37%) were supplemented with α-ketoacid.

## Independent and Interactive Associations of Serum Phosphorus and Albumin With Mortality

During a median follow-up of 49 months, 599 (28%) patients died. Among these patients, 294 (49%) were caused by cardiovascular disease and 109 (18%) by infectious disease. The clinical outcomes of the study patients were listed in **Table 2**. The mortality predictability of serum phosphorus and albumin was assessed separately and interactively (**Table 3**). In the multivariate Cox regression models, higher serum albumin level was associated with decreased risk of all-cause (HR 0.93, 95%CI 0.89–0.98,  $p = 0.003$ ) and cardiovascular mortality (HR 0.95, 95%CI 0.91–0.99,  $p = 0.03$ ), whereas higher serum phosphorus level was not associated with all-cause (HR 0.71, 95%CI 0.45–1.14,  $p = 0.16$ ) or cardiovascular mortality (HR 0.75,



95%CI 0.49–1.17,  $p = 0.18$ ), after adjustment for age, gender, history of diabetes and cardiovascular disease, serum levels of hemoglobin, hs-CRP, iPTH, blood pressure, total cholesterol, TG, LDL-c, RRF, and uses of phosphate binders, calcitriol, or  $\alpha$ -ketoacid. Moreover, significant interactions were detected between phosphorus and albumin on mortality after adjusting for confounding variables ( $p$ -interaction = 0.02 for both all-cause and cardiovascular mortality). In addition, we observed the non-linear associations of serum phosphorus and albumin with all-cause and cardiovascular mortality ( $p < 0.001$  for both) in the restricted cubic splines analysis (Figure 2), suggesting serum phosphorus and albumin might modify each other in their relations to outcomes.

### Combined Effect of Serum Phosphorus and Albumin on Mortality

By trying all the possible values for the change points with highest likelihoods in the non-linearity models in restricted cubic splines, two-line piecewise-linear models were used. Since 1.5 mmol/L for serum phosphorus and 35 g/L for serum albumin had the highest likelihood, those values were chosen for a categorical split. Thereby, patients were categorized into four groups based on the four-level joint phosphorus/albumin concentrations, which were described in detail in materials and methods section.

Figure 3 presents the survival curves for four categories of patients. The results showed higher all-cause and cardiovascular

mortalities among patients with either concurrent low phosphorus and low albumin or high phosphorus and low albumin levels ( $p < 0.001$ ). Notably, the cumulative incidences of both all-cause and cardiovascular mortality were significantly higher among patients with lower levels of serum albumin, irrespective of phosphorus values. The relative risk of mortality in relation to joint serum phosphorus/albumin levels is shown in **Table 4** and **Figure 4**, with subjects in low phosphorus and high albumin group as a reference. After adjustment for potential confounders, including age, gender history of diabetes and cardiovascular disease, serum levels of hemoglobin, hs-CRP, iPTH, SBP, DBP, TC, TG, LDL-c, RRF, and uses of phosphate binders, calcitriol, and  $\alpha$ -ketoacid, patients with concurrent low phosphorus and low albumin levels had a 1.75-fold increase in all-cause mortality (95% CI 1.22–2.50,  $p = 0.002$ ) and a 1.92-fold elevation in cardiovascular mortality (95% CI 1.07–3.45,  $p =$

0.03). Adjusted hazard ratios of all-cause and cardiovascular mortality in patients with concurrent high phosphorus and low albumin levels were 1.95 (95%CI 1.27–2.98,  $p = 0.002$ ) and 0.37 (95%CI 0.10–1.33,  $p = 0.13$ ), respectively. However, no significantly increased risk of both all-cause and cardiovascular mortality was observed among patients with high phosphorus and high albumin relative to the reference group. These results implicated that correcting hyperphosphatemia at the “expense” of albumin would lead to increased mortality in patients undergoing CAPD.

## DISCUSSION

In the present study, we found that there were interactions between serum phosphorus and albumin in relation to all-cause and cardiovascular mortality. The association between phosphorus concentration and mortality was modified by albumin level, and high phosphorus with high albumin blunted the effects of the high phosphorus on all-cause and cardiovascular mortality.

Previous studies have indicated that patients who underwent dialysis have high prevalence of hyperphosphatemia, which is one of the most important risk factors associated with poor outcomes (7, 11). Correcting high serum phosphorus may ameliorate the adverse effects of high serum phosphorus on mortality in patients on dialysis. The reduction of dietary protein intake is widely recognized as one of cost-effective means for lowering serum phosphorus level in patients with chronic kidney disease (13, 29). However, phosphorus and protein intake is closely related, and it is reasonable to consider that enhanced dietary protein intake would increase both serum phosphorus and serum albumin levels, whereas insufficiency of protein intake may result in lower serum phosphorus concentration and a concurrent decline in serum albumin (30).

Our data corroborated previous findings that hypoalbuminemia was a significant determinant of all-cause and

**TABLE 2** | Outcomes of the study cohort.

Variables	n (%)
Follow-up (months)	49 (20, 78)
<b>Outcomes</b>	
Deaths	599 (28%)
Cardiovascular death	294 (49%)
Infection	109 (18%)
Gastrointestinal hemorrhage	14 (2%)
Tumors	18 (3%)
Others	97 (16%)
Unknown	65 (11%)
Kidney transplantation	534 (25%)
Transferred to hemodialysis	381 (18%)
Transferred to other centers	90 (4%)

Values are median (25–75%) or n (%).

**TABLE 3** | Interaction and association of albumin and phosphorus with all-cause mortality and cardiovascular mortality.

	Model 1		Model 2		Model 3	
	HR (95% CI)	p-value	HR (95% CI)	p-value	HR (95% CI)	p-value
<b>All-cause mortality</b>						
Phosphorus (mmol/L)	0.81 (0.67–0.98)	<b>0.03</b>	1.07 (0.89–1.29)	0.48	0.71 (0.45–1.14)	0.16
Albumin (g/L)	0.92 (0.91–0.94)	<b>&lt;0.001</b>	0.96 (0.94–0.97)	<b>&lt;0.001</b>	0.93 (0.89–0.98)	<b>0.003</b>
Interaction		<b>&lt;0.001</b>		<b>0.03</b>		<b>0.02</b>
<b>Cardiovascular mortality</b>						
Phosphorus (mmol/L)	0.83 (0.63–1.10)	0.83	1.11 (0.85–1.45)	0.45	0.75 (0.49–1.14)	0.18
Albumin (g/L)	0.94 (0.92–0.96)	<b>&lt;0.001</b>	0.97 (0.95–0.99)	<b>0.01</b>	0.95 (0.91–0.99)	<b>0.03</b>
Interaction		<b>0.001</b>		0.32		<b>0.02</b>

HR, hazard ratio.

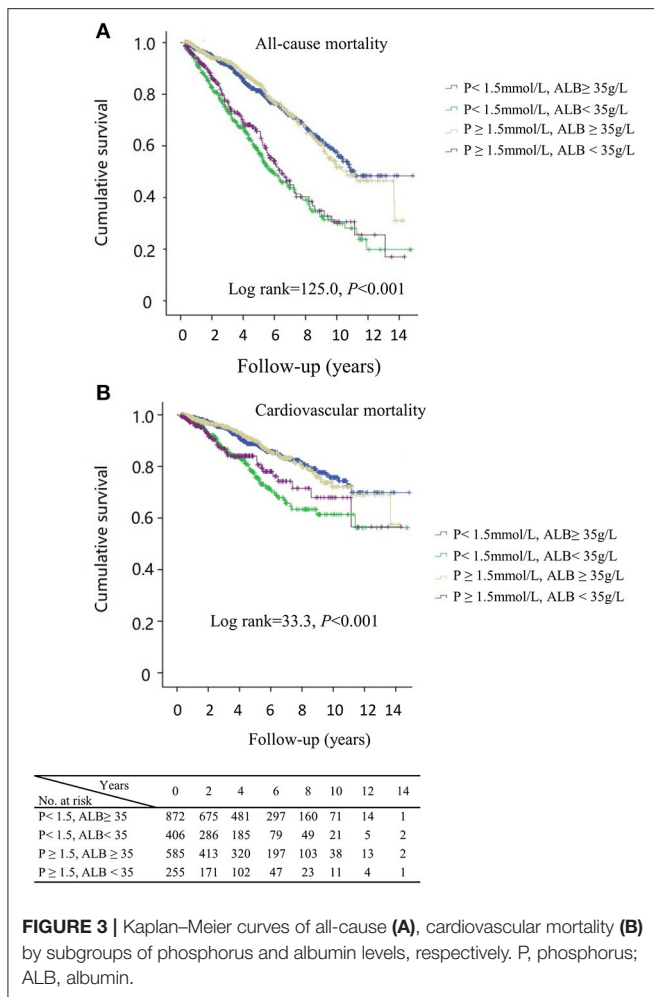
\*Bold indicates significance at  $p < 0.05$ .

Model 1 unadjusted.

Model 2 adjusted for: age and gender.

Model 3 adjusted: model 2+ history of diabetes and cardiovascular disease, serum levels of hemoglobin, high sensitive C-reactive protein, intact parathyroid hormone, systolic blood pressure, diastolic blood pressure, total cholesterol, triglyceride, low-density lipoprotein cholesterol, residual renal function, and uses of phosphate binders, calcitriol, and  $\alpha$ -ketoacid.





cardiovascular mortality (19, 22), but no such correlation was found for serum phosphorus when assessed as a continuous variable. However, non-linearities were evident separately for phosphorus and albumin in their relations to mortality. Notably, there were significant interactions between phosphorus and albumin in their associations with both all-cause and cardiovascular mortality. Our finding was consistent with the previous study that the associations of serum phosphorus and albumin concentrations with mortality are modified by each other over time in a cohort study of patients on incident HD and PD (14). Therefore, combination effects of serum albumin and phosphorus should be evaluated concurrently with respect to clinical outcomes in patients on incident dialysis (20).

It has been demonstrated that both hyperphosphatemia and hypoalbuminemia are independent risk factors for mortality in patients undergoing dialysis (1, 5, 7, 21, 22). But there are several studies showing no relation between serum phosphorus and survival in patients undergoing pre-dialysis and dialysis (31–33). We found that patients with high phosphorus and low albumin concentrations (phosphorus ≥1.5 mmol/L and albumin <35 g/L) had the highest risk of all-cause mortality across the four groups, compared to those with low serum

phosphorus and high albumin. On the contrary, high phosphorus with albumin level higher than 35 g/L was not associated with an increased risk of all-cause and cardiovascular mortality in patients undergoing CAPD. Our data suggested that associations between high phosphorus and all-cause mortality were indeed modified by serum albumin concentration, which is in line with previous studies that demonstrated a worse outcome among patients with higher phosphorus and lower albumin (16, 20).

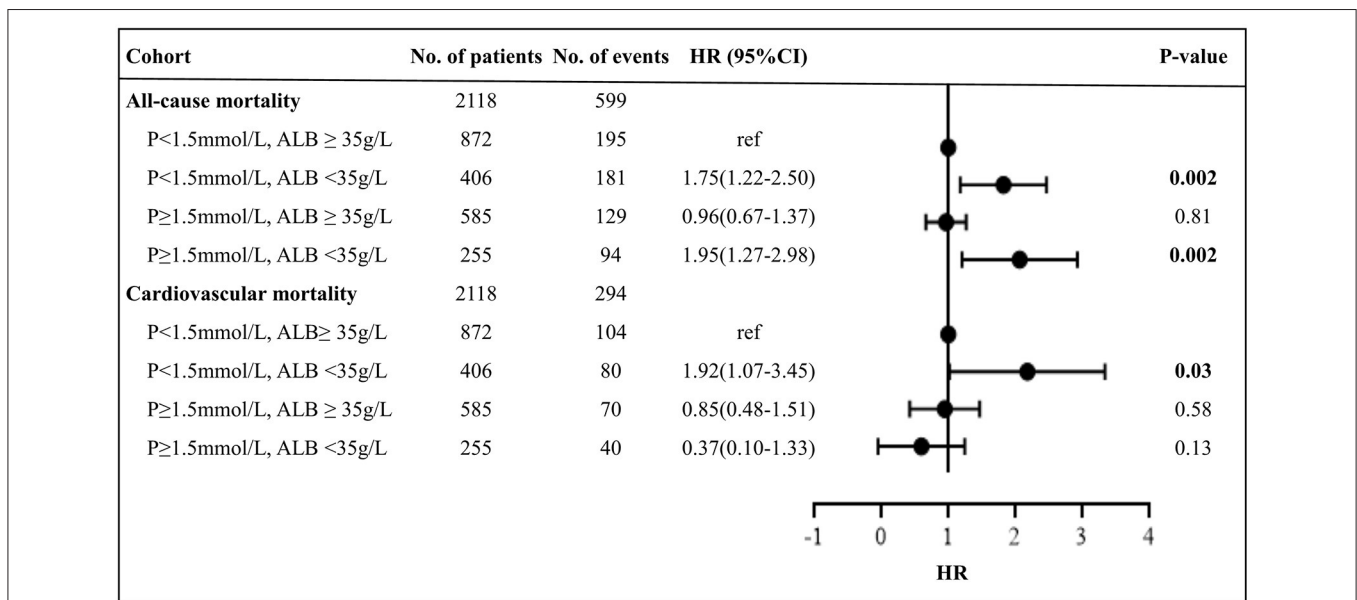
The K/DOQI and KDIGO guidelines suggest the three cornerstone approaches to dispose hyperphosphatemia (13, 29). As a first-line approach, dietary phosphorus control, by restricting phosphorus-rich foods, avoiding phosphorus additives in processed foods, and using wet cooking methods and substitute foods with relative lower phosphorus bioavailability (16, 20), along with maintaining adequate dietary protein intake are essential in the management of hyperphosphatemia and prevent protein-energy wasting in patients on dialysis. In a study of 884 patients undergoing incident PD, a diet with a higher plant-based protein–total protein ratio is found to be related to lower all-cause and cardiovascular mortality, especially in those without hypoalbuminemia (34). On the other hand, restricting dietary protein, in order to obtain a neutral phosphorus balance, has been demonstrated to impose the risk of hypoalbuminemia and protein-energy wasting (15, 30). Previous study revealed that patients undergoing HD with a decrease in serum phosphorus and a concomitant reduction in normalized protein nitrogen appearance, a surrogate of dietary protein intake, had a 11% higher risk of mortality than those with an increase in both parameters over 6 months (16). Furthermore, a *post-hoc* analysis from the Hemodialysis (HEMO) study showed that more restrictive prescribed dietary phosphate was associated with poorer indices of nutritional status and did not confer a survival advantage among patients on prevalent HD. Instead, a more liberal phosphate prescription was related to increased survival (14). Consistently, our results showed that patients with low concurrent levels of serum phosphorus and albumin (phosphorus <1.5 mmol/L and albumin <35 g/L) had an increased risk of both all-cause and cardiovascular mortality. In contrast, the risk of mortality did not differ in high serum albumin categories, irrespective of phosphorus levels. These data suggest that interventions to control serum phosphorus along with reduced albumin overweight the benefit of lower serum phosphorus and cause greater mortality. In addition, there have been studies showing that low serum phosphorus was associated with higher all-cause and cardiovascular mortality risks (35, 36). In our present study, low phosphorus showed a non-significant trend toward increased mortality, probably due to relatively small sample size, which might have obscured its potential effect on survival. Therefore, maintaining adequate dietary protein intake is also one of important strategies in the management of hyperphosphatemia (14).

The control of serum phosphorus by higher dose PD is made difficult due to time-consuming, burdensome, and out-of-pocket costs for patients (29). Meanwhile, higher dose PD has been associated with better phosphorus control (37), but probably worse nutrition status (37–40) and equivalent outcomes (41). Therefore, phosphate binders might be appropriate for patients

**TABLE 4** | Analysis in associations between phosphorus and all-cause, cardiovascular mortality separately, and by albumin and phosphorus levels, respectively.

	Model 1		Model 2		Model 3		Model 4	
	HR (95% CI)	P	HR (95% CI)	P	HR (95% CI)	P	HR (95% CI)	P
<b>All-cause mortality</b>								
P < 1.5, ALB ≥ 35	Ref		Ref		Ref		Ref	
P < 1.5, ALB < 35	2.54 (2.07–3.10)	<b>&lt;0.001</b>	1.76 (1.43–2.16)	<b>&lt;0.001</b>	1.56 (1.26–1.92)	<b>&lt;0.001</b>	1.75 (1.22–2.50)	<b>0.002</b>
P ≥ 1.5, ALB ≥ 35	1.01 (0.81–1.26)	0.96	1.08 (0.86–1.35)	0.51	1.04 (0.83–1.30)	0.75	0.96 (0.67–1.37)	0.81
P ≥ 1.5, ALB < 35	2.26 (1.77–2.89)	<b>&lt;0.001</b>	2.03 (1.59–2.61)	<b>&lt;0.001</b>	1.84 (1.43–2.36)	<b>&lt;0.001</b>	1.95 (1.27–2.98)	<b>0.002</b>
<b>Cardiovascular mortality</b>								
P < 1.5, ALB ≥ 35	Ref		Ref		Ref		Ref	
P < 1.5, ALB < 35	2.07 (1.55–2.77)	<b>&lt;0.001</b>	1.41 (1.05–1.90)	<b>0.02</b>	1.22 (0.91–1.67)	0.17	1.92 (1.07–3.45)	<b>0.03</b>
P ≥ 1.5, ALB ≥ 35	1.02 (0.76–1.39)	0.88	1.12 (0.82–1.52)	0.47	1.08 (0.79–1.46)	0.64	0.85 (0.48–1.51)	0.58
P ≥ 1.5, ALB < 35	1.78 (1.24–2.57)	<b>0.002</b>	1.57 (1.08–2.25)	<b>0.02</b>	1.40 (0.97–2.02)	0.07	0.37 (0.10–1.33)	0.13

P, phosphorus; ALB, albumin. The unit for phosphorus and albumin was mmol/L and g/L, respectively. HR, hazard ratio. Node at 1.5 mmol/L for phosphorus and 35 g/L for albumin was noted in restricted cubic splines and piecewise-linear model. Thereby phosphorus and albumin were categorized into groups as follows: (1) Phosphorus < 1.5 mmol/L, albumin ≥ 35 g/L, as the referenced group; (2) phosphorus < 1.5 mmol/L, albumin < 35 g/L; (3) phosphorus ≥ 1.5 mmol/L, albumin < 35 g/L; (4) phosphorus ≥ 1.5 mmol/L, albumin ≥ 35 g/L. Model 1 was unadjusted. Model 2 was adjusted for: age and gender. Model 3 adjusted: model 2 + history of diabetes and cardiovascular disease. Model 4 adjusted: model 3 + serum levels of hemoglobin, high-sensitive C-reactive protein, intact parathyroid hormone, systolic blood pressure, diastolic blood pressure, total cholesterol, triglyceride, low-density lipoprotein cholesterol, residual renal function, and uses of phosphate binders, calcitriol, and α-ketoacid. \*Bold indicates significance at P < 0.05.



**FIGURE 4** | Forest plot of mortality outcomes by subgroups. P, phosphorus; ALB, albumin; HR, hazard ratio. Bold indicates significance at p < 0.05. Cox regression results was from model 4 which was adjusted by age, gender, and history of diabetes and cardiovascular disease, serum levels of hemoglobin, high-sensitive C-reactive protein, intact parathyroid hormone, systolic blood pressure, diastolic blood pressure, total cholesterol, triglyceride, low-density lipoprotein cholesterol, residual renal function, and uses of phosphate binders, calcitriol, and α-ketoacid. HR > 1 indicates patients with phosphorus <1.5 mmol/L and albumin ≥35 g/L is more beneficial, and <1 indicates patients with phosphorus and albumin levels in the respective group is more beneficial.

undergoing CAPD to maintain acceptable serum phosphorus levels and avoid the risk of malnutrition in clinical practice. In the most recent KDIGO and K/DOQI guidelines, non-calcium-based phosphorus binders are recommended to use as first-line phosphorus binders (13, 29). Available non-calcium-based

phosphorus binders, such as lanthanum carbonate and sevelamer carbonate, are shown to reduce serum phosphorus levels and maintain serum albumin (42, 43). Recently, novel iron-based phosphorus binders with a low pill burden have demonstrated efficacy at decreasing serum phosphorus. More importantly, it

has been shown to increase serum albumin levels among patients with hypoalbuminemia, possibly by allowing patients to increase their dietary intake of protein (44–46). In our cohort study, 849 subjects (40%) received phosphorus binders, association of serum phosphorus with mortality risk was adjusted for use of phosphorus binders. However, we did not assess whether there was difference between patients prescribed and those not prescribed phosphorus binders.

The strengths of the study included prospective study design with a large incident PD cohort in a single center. This study explored serum phosphorus–albumin interaction and associations with mortality among CAPD population for the first time to our knowledge. However, there are several limitations in our studies. First, we only enrolled patients for CAPD, and our findings may therefore not be representative of those treated with automated PD or HD due to the difference in excretion mechanism and amount of excreted phosphorus. Second, the analysis was based on baseline data rather than changes of these parameters. Third, we cannot eliminate the potential confounding impact related to clinical outcomes, although we tried to adjust for many relevant confounders in the analysis.

## CONCLUSIONS

Serum albumin modified the association between phosphorus level and mortality, with high concurrent levels of serum phosphorus and albumin not associated with mortality. Lower albumin concentration was related to an increased risk of all-cause and cardiovascular mortality independent of phosphorus levels. The findings implicate that controlling serum phosphorus without reducing albumin could improve clinical outcomes in patients undergoing CAPD.

## DATA AVAILABILITY STATEMENT

The original contributions presented in the study are included in the article/supplementary material, further inquiries can be directed to the corresponding author/s.

## REFERENCES

- Vervloet MG, Sezer S, Massy ZA, Johansson L, Cozzolino M, Fouque D, et al. The role of phosphate in kidney disease. *Nat Rev Nephrol.* (2017) 13:27–38. doi: 10.1038/nrneph.2016.164
- Fuller DS, Druzynski PJ, Cooper K, Bradbury BD, Robinson BM, Tentori F. Combinations of mineral and bone disorder markers and risk of death and hospitalizations in the international Dialysis Outcomes and Practice Patterns Study. *Clin Kidney J.* (2020) 13:1056–62. doi: 10.1093/ckj/sfz112
- Noordzij M, Korevaar JC, Bos WJ, Boeschoten EW, Dekker FW, Bossuyt PM, et al. Mineral metabolism and cardiovascular morbidity and mortality risk: peritoneal dialysis patients compared with haemodialysis patients. *Nephrol Dial Transplant.* (2006) 21:2513–20. doi: 10.1093/ndt/gfl257
- Schwarz S, Trivedi BK, Kalantar-Zadeh K, Kovesdy CP. Association of disorders in mineral metabolism with progression of chronic kidney disease. *Clin J Am Soc Nephrol.* (2006) 1:825–31. doi: 10.2215/CJN.02101205
- Slinin Y, Foley RN, Collins AJ. Calcium, phosphorus, parathyroid hormone, and cardiovascular disease in hemodialysis patients: the USRDS waves 1, 3, and 4 study. *J Am Soc Nephrol.* (2005) 16:1788–93. doi: 10.1681/ASN.2004040275
- Floege J, Kim J, Ireland E, Chazot C, Druke T, de Francisco A, et al. Serum iPTH, calcium and phosphate, and the risk of mortality in a European haemodialysis population. *Nephrol Dial Transplant.* (2011) 26:1948–55. doi: 10.1093/ndt/gfq219
- Palmer SC, Hayen A, Macaskill P, Pellegrini F, Craig JC, Elder GJ, et al. Serum levels of phosphorus, parathyroid hormone, and calcium and risks of death and cardiovascular disease in individuals with chronic kidney disease: a systematic review and meta-analysis. *JAMA.* (2011) 305:1119–27. doi: 10.1001/jama.2011.308
- Noordzij M, Korevaar JC, Boeschoten EW, Dekker FW, Bos WJ, Krediet RT, et al. The Kidney Disease Outcomes Quality Initiative (K/DOQI) guideline for bone metabolism and disease in CKD: association with mortality in dialysis patients. *Am J Kidney Dis.* (2005) 46:925–32. doi: 10.1053/j.ajkd.2005.08.013
- Melamed ML, Eustace JA, Plantinga L, Jaar BG, Fink NE, Coresh J, et al. Changes in serum calcium, phosphate, and PTH and the risk of death in

## ETHICS STATEMENT

The studies involving human participants were reviewed and approved by Clinical Research Ethics Committee of the First Affiliated Hospital of Sun Yat-sen University. The patients/participants provided their written informed consent to participate in this study.

## AUTHOR CONTRIBUTIONS

HM and XY developed and designed the research. NH and HL conducted the research and wrote the paper. NH, LF, QZ, DF, and LG analyzed the data. CY provided essential materials for the research. HM had primary responsibility for the final content. All authors have read and approved the final manuscript.

## FUNDING

This work was partially supported by the Guangzhou Science and technology plan (Grant no. 201807010002); the Natural Science Foundation of Guangdong Province, China (Grant no. 2017A030310199); National Natural Science Foundation of China (Grant no. 81700583), 5010 Clinical Program of Sun Yat-sen University (2017007); the National Key Research and Development Project (Grant no. 2016YFC0906101); the Operational Grant of Guangdong Provincial Key Laboratory (Grant no. 2017B030314019); and the Key Laboratory of National Health Commission and Key Laboratory of Nephrology, Guangdong Province, Guangzhou, China (Grant no. 2002B60118).

## ACKNOWLEDGMENTS

We thank all colleagues at Sun Yat-sen University for their excellent data collection and analysis.



- incident dialysis patients: a longitudinal study. *Kidney Int.* (2006) 70:351–7. doi: 10.1038/sj.ki.5001542
10. Da J, Xie X, Wolf M, Disthabanchong S, Wang J, Zha Y, et al. Serum phosphorus and progression of CKD and mortality: a meta-analysis of cohort studies. *Am J Kidney Dis.* (2015) 66:258–65. doi: 10.1053/j.ajkd.2015.01.009
  11. Lopes MB, Karaboyas A, Bieber B, Pisoni RL, Walpen S, Fukagawa M, et al. Impact of longer term phosphorus control on cardiovascular mortality in hemodialysis patients using an area under the curve approach: results from the DOPPS. *Nephrol Dial Transplant.* (2020) 35:1794–801. doi: 10.1093/ndt/gfaa054
  12. Chang AR, Lazo M, Appel LJ, Gutierrez OM, Grams ME. High dietary phosphorus intake is associated with all-cause mortality: results from NHANES III. *Am J Clin Nutr.* (2014) 99:320–7. doi: 10.3945/ajcn.113.073148
  13. Ketteler M, Block GA, Evenepoel P, Fukagawa M, Herzog CA, McCann L, et al. Executive summary of the 2017 KDIGO Chronic Kidney Disease-Mineral and Bone Disorder (CKD-MBD) guideline update: what's changed and why it matters. *Kidney Int.* (2017) 92:26–36. doi: 10.1016/j.kint.2017.04.006
  14. Lynch KE, Lynch R, Curhan GC, Brunelli SM. Prescribed dietary phosphate restriction and survival among hemodialysis patients. *Clin J Am Soc Nephrol.* (2011) 6:620–9. doi: 10.2215/CJN.04620510
  15. Rufino M, de Bonis E, Martin M, Rebollo S, Martin B, Miquel R, et al. Is it possible to control hyperphosphataemia with diet, without inducing protein malnutrition? *Nephrol Dial Transplant.* (1998) 13(Suppl. 3):65–7. doi: 10.1093/ndt/13.suppl\_3.65
  16. Shinaberger CS, Greenland S, Kopple JD, Van Wyck D, Mehrotra R, Kovesdy CP, et al. Is controlling phosphorus by decreasing dietary protein intake beneficial or harmful in persons with chronic kidney disease? *Am J Clin Nutr.* (2008) 88:1511–8. doi: 10.3945/ajcn.2008.26665
  17. Li J, Wang L, Han M, Xiong Y, Liao R, Li Y, et al. The role of phosphate-containing medications and low dietary phosphorus-protein ratio in reducing intestinal phosphorus load in patients with chronic kidney disease. *Nutr Diabetes.* (2019) 9:14. doi: 10.1038/s41387-019-0080-2
  18. Block GA, Kilpatrick RD, Lowe KA, Wang W, Danese MD. CKD-mineral and bone disorder and risk of death and cardiovascular hospitalization in patients on hemodialysis. *Clin J Am Soc Nephrol.* (2013) 8:2132–40. doi: 10.2215/CJN.04260413
  19. Jiang J, Wang LH, Fei YY, Zhou XW, Peng L, Lan L, et al. Serum albumin at start of peritoneal dialysis predicts long-term outcomes in Anhui Han patients on continuous ambulatory peritoneal dialysis: a retrospective cohort study. *Kidney Dis.* (2018) 4:262–68. doi: 10.1159/000492426
  20. Zitt E, Lamina C, Sturm G, Knoll F, Lins F, Freistatter O, et al. Interaction of time-varying albumin and phosphorus on mortality in incident dialysis patients. *Clin J Am Soc Nephrol.* (2011) 6:2650–6. doi: 10.2215/CJN.03780411
  21. Foley RN, Parfrey PS, Harnett JD, Kent GM, Murray DC, Barre PE. Hypoalbuminemia, cardiac morbidity, and mortality in end-stage renal disease. *J Am Soc Nephrol.* (1996) 7:728–36. doi: 10.1681/ASN.V75728
  22. Cooper BA, Penne EL, Bartlett LH, Pollock CA. Protein malnutrition hypoalbuminemia as predictors of vascular events mortality in ESRD. *Am J Kidney Dis.* (2004) 43:61–6. doi: 10.1053/j.ajkd.2003.08.045
  23. Guedes AM. Peritoneal protein loss, leakage or clearance in peritoneal dialysis, where do we stand? *Perit Dial Int.* (2019) 39:201–9. doi: 10.3747/pdi.2018.00138
  24. Fan J, Ye H, Zhang X, Cao P, Guo Q, Mao H, et al. Association of lean body mass index and peritoneal protein clearance in peritoneal dialysis patients. *Kidney Blood Press Res.* (2019) 44:94–102. doi: 10.1159/000498841
  25. Lu W, Pang WF, Jin L, Li H, Chow KM, Kwan BC, et al. Peritoneal protein clearance predicts mortality in peritoneal dialysis patients. *Clin Exp Nephrol.* (2019) 23:551–60. doi: 10.1007/s10157-018-1677-9
  26. Goldwasser P, Feldman JG, Barth RH. Serum prealbumin is higher in peritoneal dialysis than in hemodialysis: a meta-analysis. *Kidney Int.* (2002) 62:276–81. doi: 10.1046/j.1523-1755.2002.00415.x
  27. Mehrotra R, Duong U, Jiwakanon S, Kovesdy CP, Moran J, Kopple JD, et al. Serum albumin as a predictor of mortality in peritoneal dialysis: comparisons with hemodialysis. *Am J Kidney Dis.* (2011) 58:418–28. doi: 10.1053/j.ajkd.2011.03.018
  28. Xia X, He F, Wu X, Peng F, Huang F, Yu X. Relationship between serum uric Acid and all-cause and cardiovascular mortality in patients treated with peritoneal dialysis. *Am J Kidney Dis.* (2014) 64:257–64. doi: 10.1053/j.ajkd.2013.08.027
  29. Scialla JJ, Kendrick J, Uribarri J, Kovesdy CP, Gutierrez OM, Jimenez EY, et al. State-of-the-art management of hyperphosphatemia in patients with CKD: an NKF-KDOQI controversies perspective. *Am J Kidney Dis.* (2021) 77:132–41. doi: 10.1053/j.ajkd.2020.05.025
  30. St-Jules DE, Woolf K, Pompeii ML, Kalantar-Zadeh K, Sevcik MA. Reexamining the phosphorus-protein dilemma: does phosphorus restriction compromise protein status? *J Ren Nutr.* (2016) 26:136–40. doi: 10.1053/j.jrn.2015.12.004
  31. Mehrotra R, Peralta CA, Chen SC, Li S, Sachs M, Shah A, et al. No independent association of serum phosphorus with risk for death or progression to end-stage renal disease in a large screen for chronic kidney disease. *Kidney Int.* (2013) 84:989–97. doi: 10.1038/ki.2013.145
  32. Menon V, Greene T, Pereira AA, Wang X, Beck GJ, Kusek JW, et al. Relationship of phosphorus and calcium-phosphorus product with mortality in CKD. *Am J Kidney Dis.* (2005) 46:455–63. doi: 10.1053/j.ajkd.2005.05.025
  33. Wakasugi M, Kazama JJ, Wada A, Hamano T, Masakane I, Narita I. Functional impairment attenuates the association between high serum phosphate and mortality in dialysis patients: a nationwide cohort study. *Nephrol Dial Transplant.* (2019) 34:1207–16. doi: 10.1093/ndt/gfy253
  34. Liu X, Hu Z, Xu X, Li Z, Chen Y, Dong J. The associations of plant-based protein intake with all-cause and cardiovascular mortality in patients on peritoneal dialysis. *Nutr Metab Cardiovasc Dis.* (2020) 30:967–76. doi: 10.1016/j.numecd.2020.03.003
  35. Lertdumrongluk P, Rhee CM, Park J, Lau WL, Moradi H, Jing J, et al. Association of serum phosphorus concentration with mortality in elderly and nonelderly hemodialysis patients. *J Ren Nutr.* (2013) 23:411–21. doi: 10.1053/j.jrn.2013.01.018
  36. Ye X, Kooman JP, van der Sande FM, Raimann JG, Usvyat LA, Wang Y, et al. Relationship between serum phosphate levels and survival in chronic hemodialysis patients: interactions with age, malnutrition and inflammation. *Clin Kidney J.* (2021) 14:348–57. doi: 10.1093/ckj/sfz143
  37. Gallar P, Ortega O, Gutierrez M, Munoz M, Hilara L, Oliet A, et al. [Influencing factors in the control of phosphorus in peritoneal dialysis. Therapeutic options]. *Nefrologia.* (2000) 20:355–61.
  38. Dukkipati R, Kopple JD. Causes and prevention of protein-energy wasting in chronic kidney failure. *Semin Nephrol.* (2009) 29:39–49. doi: 10.1016/j.semnephrol.2008.10.006
  39. Guedri Y, Damma KN, Toumi M, Sahtout W, Azzabi A, Mrabet S, et al. Effect of intraperitoneal injection of sulodexide on peritoneal function and albumin leakage in continuous ambulatory peritoneal dialysis patients. *Saudi J Kidney Dis Transpl.* (2016) 27:1194–99. doi: 10.4103/1319-2442.194611
  40. Sanchez-Villanueva R, Bajo A, Del Peso G, Fernandez-Reyes MJ, Gonzalez E, Romero S, et al. Higher daily peritoneal protein clearance when initiating peritoneal dialysis is independently associated with peripheral arterial disease (PAD): a possible new marker of systemic endothelial dysfunction? *Nephrol Dial Transplant.* (2009) 24:1009–14. doi: 10.1093/ndt/gfn595
  41. Parapiboon W, Jamratpan T. Intensive versus minimal standard dosage for peritoneal dialysis in acute kidney injury: a randomized pilot study. *Perit Dial Int.* (2017) 37:523–8. doi: 10.3747/pdi.2016.00260
  42. Ruospo M, Palmer SC, Natale P, Craig JC, Vecchio M, Elder GJ, et al. Phosphate binders for preventing and treating chronic kidney disease-mineral and bone disorder (CKD-MBD). *Cochrane Database Syst Rev.* (2018) 8:CD006023. doi: 10.1002/14651858.CD006023.pub3
  43. Hutchison A, Whelton A, Thadhani R, Achenbach H, Vergani A, Wu J, et al. Long-term mortality and bone safety in patients with end-stage renal disease receiving lanthanum carbonate. *Nephron.* (2018) 140:265–74. doi: 10.1159/000492603
  44. Kalantar-Zadeh K, Ficociello LH, Parameswaran V, Athienites NV, Mullan C, Kossmann RJ, et al. Changes in serum albumin and other nutritional markers when using sucroferric oxyhydroxide as phosphate binder among hemodialysis patients: a historical cohort study. *BMC Nephrol.* (2019) 20:396. doi: 10.1186/s12882-019-1582-9

45. Floege J, Covic AC, Ketteler M, Rastogi A, Chong EM, Gaillard S, et al. A phase III study of the efficacy and safety of a novel iron-based phosphate binder in dialysis patients. *Kidney Int.* (2014) 86:638–47. doi: 10.1038/ki.2014.58
46. Koiwa F, Yokoyama K, Fukagawa M, Terao A, Akizawa T. Efficacy and safety of sucroferric oxyhydroxide compared with sevelamer hydrochloride in Japanese haemodialysis patients with hyperphosphataemia: a randomized, open-label, multicentre, 12-week phase III study. *Nephrology.* (2017) 22:293–300. doi: 10.1111/nep.12891

**Conflict of Interest:** The authors declare that the research was conducted in the absence of any commercial or financial relationships that could be construed as a potential conflict of interest.

**Publisher's Note:** All claims expressed in this article are solely those of the authors and do not necessarily represent those of their affiliated organizations, or those of the publisher, the editors and the reviewers. Any product that may be evaluated in this article, or claim that may be made by its manufacturer, is not guaranteed or endorsed by the publisher.

Copyright © 2021 Huang, Li, Fan, Zhou, Fu, Guo, Yi, Yu and Mao. This is an open-access article distributed under the terms of the Creative Commons Attribution License (CC BY). The use, distribution or reproduction in other forums is permitted, provided the original author(s) and the copyright owner(s) are credited and that the original publication in this journal is cited, in accordance with accepted academic practice. No use, distribution or reproduction is permitted which does not comply with these terms.