



OPEN ACCESS

Edited by:

Matteo Convertino,
Hokkaido University, Japan

Reviewed by:

Rongrong Ma,
The Second Affiliated Hospital of Xi'an
Jiaotong University, China
Ruchong Chen,
Guangzhou Institute of Respiratory
Health, China
Xiaohong Chang,
Yanan University Affiliated
Hospital, China

***Correspondence:**

Wuping Wang
www._8@163.com
Jinbo Zhao
zhaojinbo@aliyun.com
Tao Jiang
jiangtaotd@163.com

† These authors have contributed
equally to this work and share first
authorship

Specialty section:

This article was submitted to
Infectious Diseases - Surveillance,
Prevention and Treatment,
a section of the journal
Frontiers in Medicine

Received: 17 June 2020

Accepted: 26 March 2021

Published: 20 May 2021

Citation:

Zhu J, Zhang Q, Jia C, Xu S, Lei J,
Chen J, Xia Y, Wang W, Wang X,
Wen M, Wang H, Zhang Z, Wang W,
Zhao J and Jiang T (2021) Challenges
Caused by Imported Cases Abroad
for the Prevention and Control of
COVID-19 in China.
Front. Med. 8:573726.
doi: 10.3389/fmed.2021.573726

Challenges Caused by Imported Cases Abroad for the Prevention and Control of COVID-19 in China

Jianfei Zhu^{1,2†}, Qingqing Zhang^{3†}, Chenghui Jia^{1†}, Shuonan Xu^{4†}, Jie Lei^{1†}, Jiakuan Chen¹, Yanmin Xia¹, Wenchen Wang¹, Xuejiao Wang¹, Miaomiao Wen¹, Hongtao Wang², Zhipei Zhang¹, Wuping Wang^{1*}, Jinbo Zhao^{1*} and Tao Jiang^{1*}

¹ Department of Thoracic Surgery, Tangdu Hospital, Air Force Military Medical University (Fourth Military Medical University), Xi'an, China, ² Department of Thoracic Surgery, Shaanxi Provincial People's Hospital, Xi'an, China, ³ Department of Pulmonary and Critical Care Medicine, The First Affiliated Hospital of Xi'an Medical University, Xi'an, China, ⁴ Department of Cardiothoracic Surgery, The First Affiliated Hospital of Xi'an Medical University, Xi'an, China

Background: Overseas imported cases of COVID-19 continue to increase in China, so we conducted this study to review the epidemiological characteristics of these patients.

Methods: From February 26 to April 4, 2020, the imported cases from abroad were enrolled in this study. The effect of prevention countermeasures in curbing the spread of COVID-19 was assessed in this study. Moreover, we defined incubation period and confirmed time as from the date of leaving the epicenter to date of symptom onset and date of final diagnosed, respectively, and the interval of symptom onset to final diagnosed time was defined as diagnostic time. Categorical variables were summarized as numbers and percentages, and the difference among the variables were analyzed.

Results: For 670 cases imported from abroad, 555 were Chinese and 115 were foreigners. Apparently, confirmed cases had significantly decreased after China was compelled to temporarily suspend the entry of foreign passport holders with valid visas or residence permits; 6 days after implement of controlled measures, the daily new confirmed cases were reduced to 13 cases. Moreover, about 84.3% of patients (166/197) presented symptoms 1 week after leaving the epicenter, and notably seven patients (3.6%) had symptoms 2 weeks after leaving the epicenter. The median incubation period was 3.0 days (inter quartile range, 1.0 to 6.0), the 95th percentile was 11.6 days. Additionally, most of cases (92.9%) were detected positively of nucleic acid after symptom onset with 4 days, the median diagnostic time was 2.0 days (interquartile range, 1.0 to 3.0), and the 95th percentile of the distribution was 5.0 days. Finally, about 5.8% of patients were healthy carriers, and the median confirmed time of asymptomatic patients was 4.0 days (interquartile range, 2.0 to 9.0). The following variables might be associated with confirmed time: symptom type ($P = 0.005$), exported regions ($P < 0.001$), and symptom onset time ($P < 0.001$).

Conclusions: The prevention countermeasures for imported cases implemented by the Chinese government played an indispensable role in curbing the spread of COVID-19; the time of departure from epicenter could provide an estimate of the incubation period; and a confirmed time, 2-week quarantine period might need to be prolonged, while asymptomatic patients should be closely monitored.

Keywords: COVID-19, global pandemic, imported case, epidemiological characteristics, prevention

INTRODUCTION

The coronavirus disease (COVID-19) (1) epidemic broken out in Wuhan City of China in December 2019, and it had spread rapidly around the world (2) due to economic globalization. Internationally, on March 11, the epidemic spread worldwide in 114 countries or regions, a total of 118,319 confirmed cases and 4,292 deaths worldwide (3) were reported by WHO. Under this situation, WHO announced COVID-19 as a global pandemic (4). In China mainland, the epidemic was controlled effectively, on March 27, 20 provinces or autonomous regions had reported no domestic cases for more than 4 weeks (5), and some regions of China reduced the public health emergency to Level Three Response (6, 7).

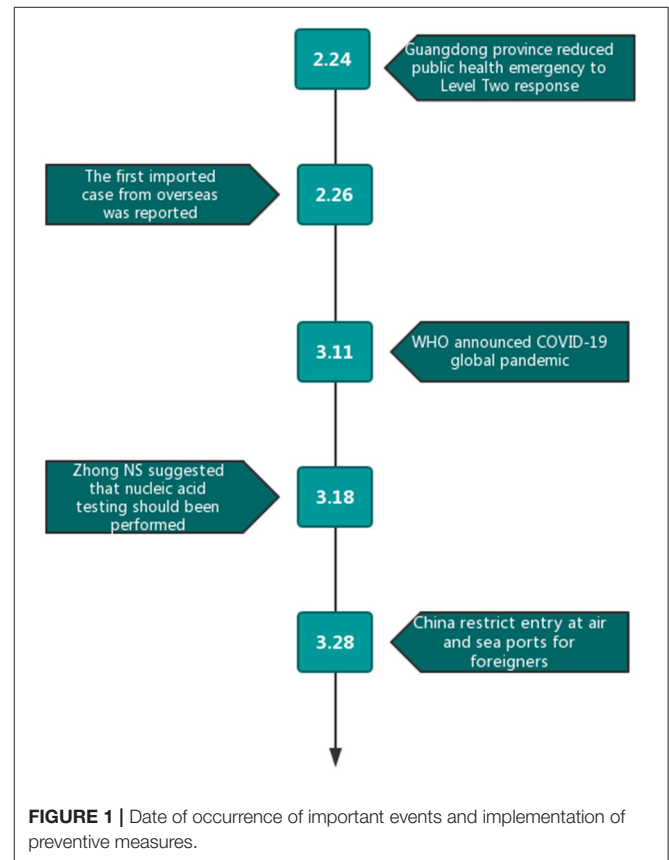
To our disappointment, on February 26, the first imported cases were reported in Ningxia Hui Autonomous Region of China, imported from Iran (8). Epidemic prevention and control measures to guard against imported cases were brought out by the authorities, such as all entering people received temperature test and home quarantine. With the increasing number of imported patients confirmed, on March 18, professor Zhong, a top Chinese epidemiologist, suggested that all entry population from epicenter should undergo nucleic acid testing (9), which resulted in a continuous increase in the number of imported cases, as on March 26, the new imported cases reached 54 cases (10). To more powerfully curb the spread of COVID-19, on March 28, China was compelled to temporarily suspend the entry of foreign passport holders with valid visas or residence permits (11).

Therefore, prevention and treatment measures for imported cases based on the epidemiological characteristics of imported cases can be formulated. However, for imported cases, most of them could not provide the definite exposure time, which was indispensable for infected disease. In real life study, it was important to utilize the available information to predict the outcome of the imported cases. So, we conducted this study to analyze the epidemiological characteristics of COVID-19 cases imported from abroad by using the available information.

MATERIALS AND METHODS

Study Design

After strict prevention and treatment of COVID-19, on February 29, 20 provinces of China mainland announced no domestic COVID-19 cases (5). However, the confirmed cases outside of China continued to increase, and by March 11, WHO



announced COVID-19 as a global pandemic (4). As a result, China's epidemic has reversed, changing from the exporting country to the importing one. The first imported case from Iran was reported on February 26, and China was compelled to temporarily suspend the entry of foreign passport holders with valid visas or residence permits on March 11 to curb the spread of COVID-19. The implementation date of critical public health prevention initiatives is displayed in **Figure 1**. This study was designed to review the epidemiological characteristics and outcomes of imported cases from abroad (from February 26 to April 4). The study was approved by the Review Board of the Air Force Medical University. Case enrollment needs to meet the following conditions: (1) imported from abroad; (2) underwent quarantine at designated places; (3) diagnosed by the results of nucleic acid test; and (4) adequate clinical information and available follow-up data.

Data Collection

We collected the departure time and the country or region, the time of entry, symptoms, time of symptom onset, confirmed age and gender from the news reports and press releases reported by National Commission and Chinese Center for Diseases Control and Prevention. The degree of severity and diagnostic criteria refer to the 7th edition of the National New Coronavirus Pneumonia Diagnosis and Treatment Program. The data collection was performed by doctor Zhu, doctor Zhang, and doctor Jia, and any major disagreement among these three doctors was checked by the other two reviewers (doctor Xu and doctor Lei).

Statistical Analysis

Due to lack of definite exposure time, we defined incubation period as from the date of leaving epicenter to date of symptom onset, and the interval of symptom onset to final diagnosed time was defined as diagnostic time (12). We also defined confirmed time as from date of leaving epicenter to date of final diagnosis. The incubation period and diagnostic time were estimated by fitting a Weibull distribution on the date of leaving epicenter and symptom onset. Categorical variables were summarized as numbers and percentages. *T* test were performed to compare the differences of incubation period among groups, and when the cases were not normal data distribution, Mann-Whitney *U* test or Kruskal-Wallis *H* test was used. It was considered statistically significant that $P < 0.05$. SPSS 20.0 was used to finish the above analyses.

RESULTS

Clinical Characteristics

As of April 4, 2020, 1 week after China suspended the entry of foreign passport holders with valid visas or residence permits (February 28, 2020), cumulative imported cases from abroad increased to 913 cases, with 11 domestic cases related to imported cases. Finally, a total of 670 imported cases (Chinese: 555 cases and foreigners: 115 cases) were enrolled in this study. Europe was the main exported area (59.4%), followed by North America (20.9%) and South America (1.2%) (Table 1). The distribution of cases in exported countries and entry province, autonomous region or municipality was shown in Figure 2, and we show that United Kingdom and United States were main exported countries, and the main imported cities were metropolises, such as Shanghai and Guangzhou. For these cases, 269 cases were male, 209 were female, and 192 cases were unknown. Among 458 patients with clear age information, the oldest patient was 71 years old, the youngest was only 2 months old, and the median age of the patients was 30 years. Figure 3 showed that patients aged between 20 and 49 years accounted for 69.2% (317/458); the main reason may be that a large proportion of the overseas imported cases were students studying abroad (32.8%). The detailed information of the patients is listed in Table 1.

Public Health Interventions

Since the first imported case from Iran was reported on February 26, China began to be concerned about the imported

TABLE 1 | Clinical characteristics of imported patients of COVID-19.

Characteristics	Cases	Proportion
Age, (median: 30 years, range from 2 month to 71 years)	<i>N</i> (670)	(%)
Gender	(null: 192)	28.7%
Male	269	40.2%
Female	209	31.2%
Age ^a	(null: 212)	31.6%
<30	228	34.0%
≥30	230	34.3%
Time of entry		
Before the global explosion	48	7.2%
Global explosion	7	1.0%
After the global explosion	615	91.8%
Nationality		
Foreigner	115	17.2%
Chinese	555	82.8%
Region of cases exported		
Asia	100	14.9%
Africa	24	3.6%
Europe	398	59.4%
South America	8	1.2%
North America	140	20.9%
Occupation		
International student	220	32.8%
Non-international students	450	67.2%
Symptoms		
Fever	107	16.0%
Respiratory symptoms	65	9.7%
Gastrointestinal symptoms	4	0.6%
Other symptom	26	3.9%
Without symptom	39	5.8%
Symptoms unknown	429	64.0%

^aAge: median age of all cases.

cases from abroad, with the reversal of domestic and foreign epidemics; on March 11, WHO announced COVID-19 as global pandemic. March 11 was an obvious watershed, the confirmed cases before and after were 28 cases and 642 cases, respectively. With the increase of confirmed cases, on March 18, Zhong Nanshan, a top Chinese epidemiologist, suggested that all entry population from epicenter should undergo nucleic acid testing, and 1 week after nucleic acid test was performed, the daily newly increased imported patients reached a peak with 50 cases. To more powerfully curb the spread of COVID-19, on March 28, China was compelled to temporarily suspend the entry of foreign passport holders with valid visas or residence permits. Apparently both arrived cases and confirmed cases had significant decreased, 6 days after implement of controlled measures, on April 4, and the daily new confirmed cases were reduced to 13 cases. The public health intervention events and related dynamic results are exhibited in Figure 4.

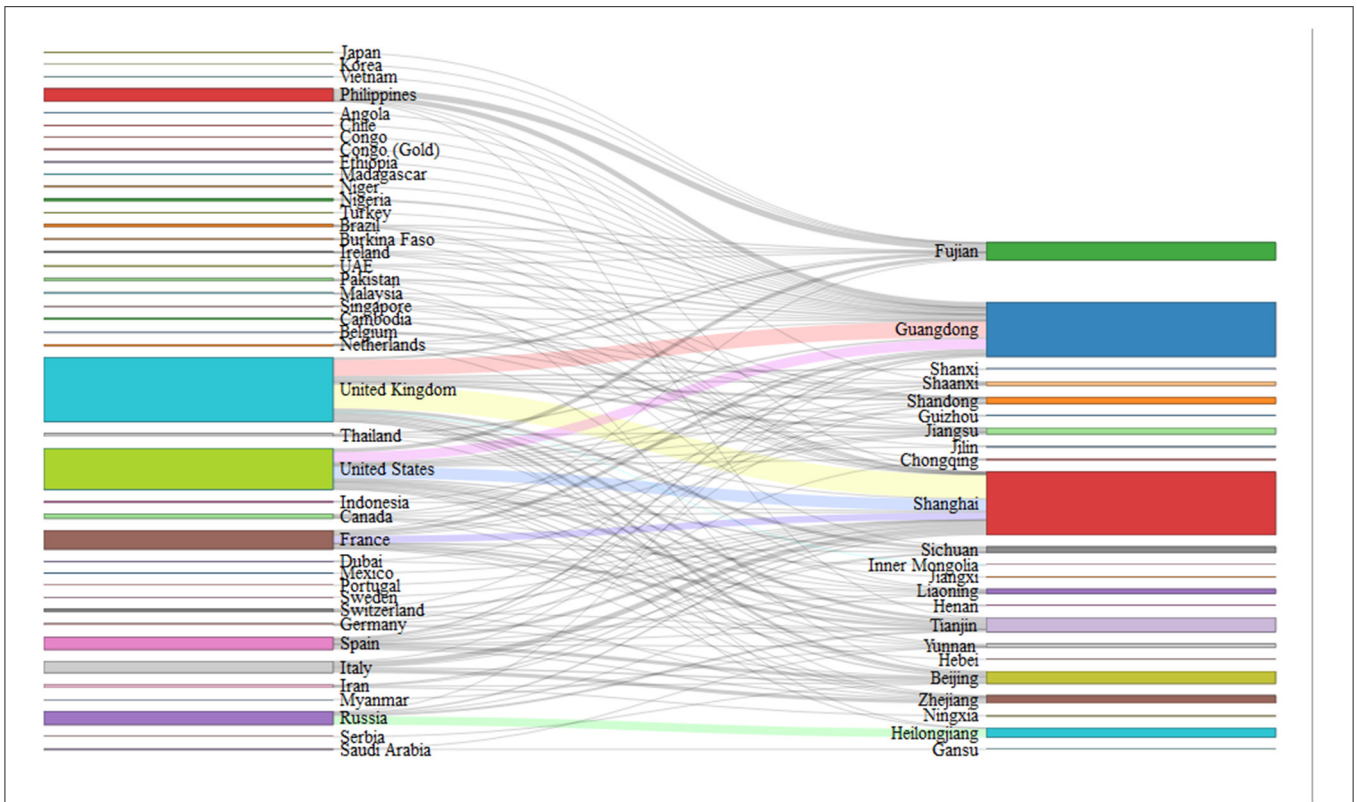


FIGURE 2 | Distribution of exported countries and distribution of imported provinces.

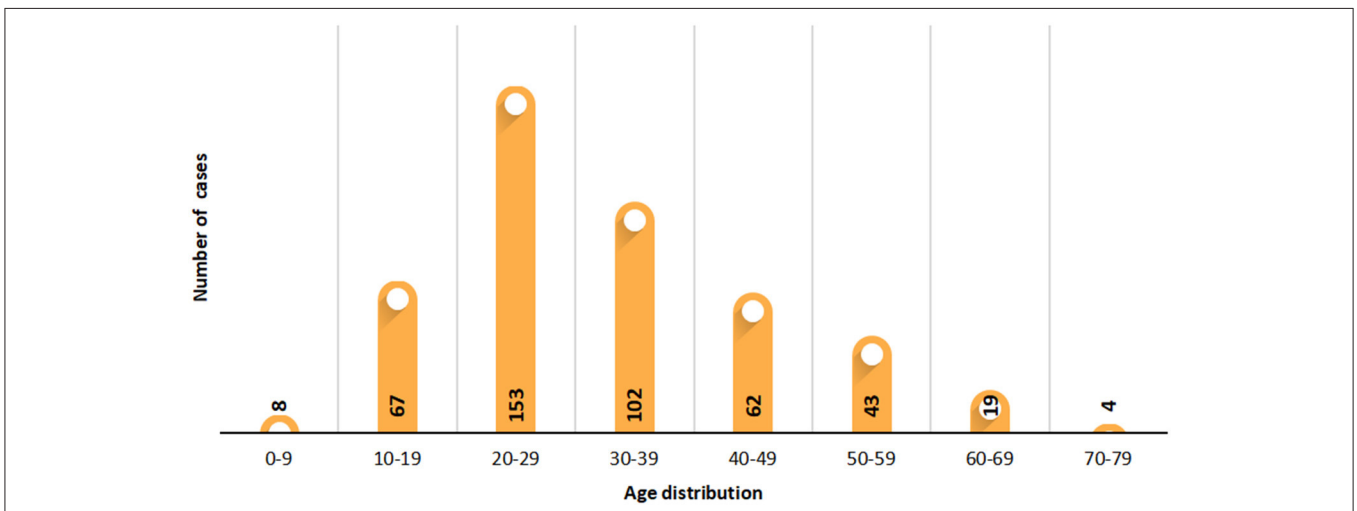
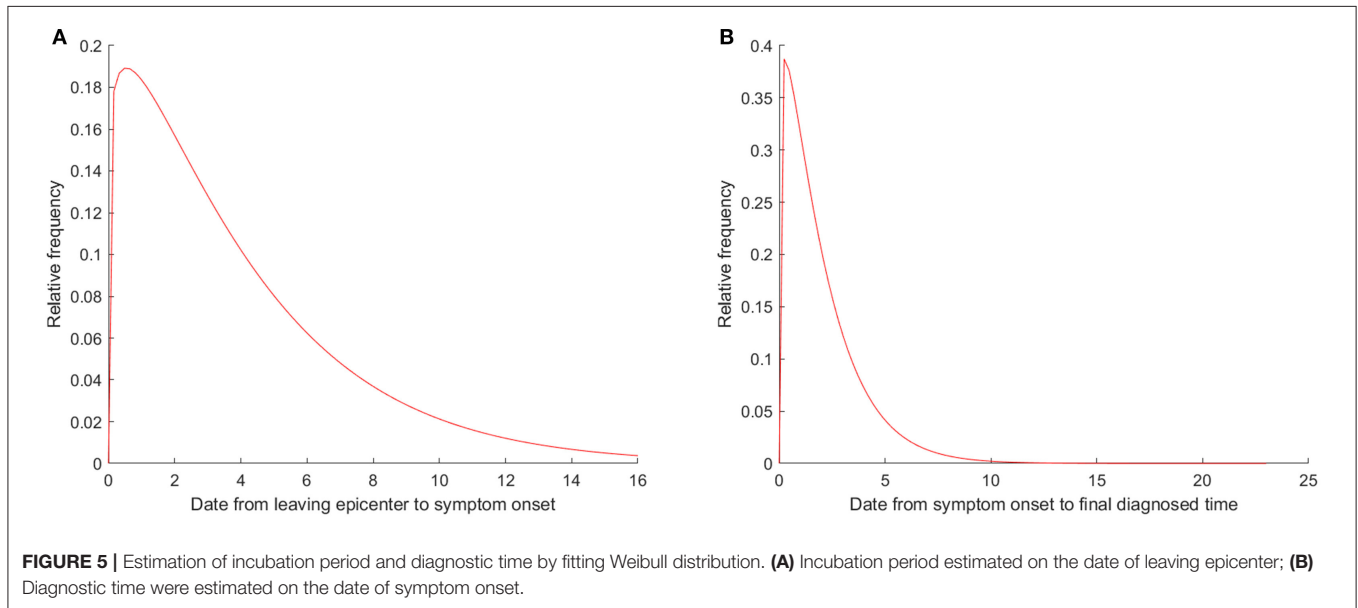
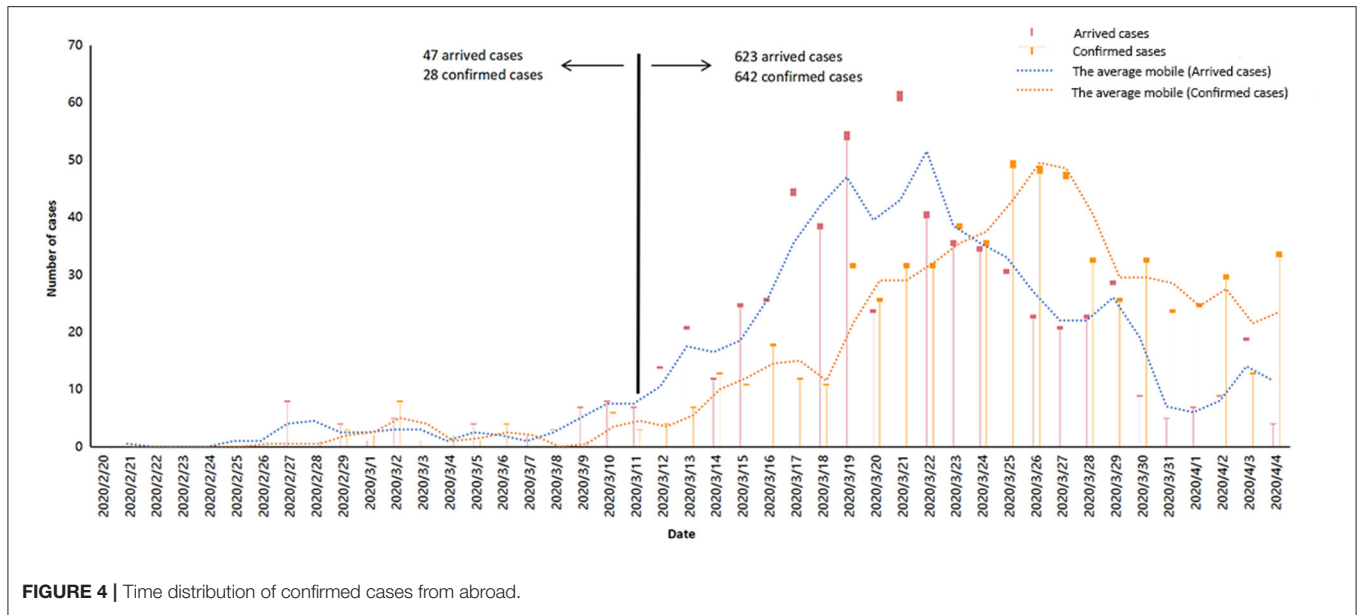


FIGURE 3 | Age distribution of imported cases from abroad.

Epidemiological Characteristics

For symptomatic patients, 37 cases had symptoms before departure, 17 patients had symptoms on the day of departure, and 180 patients had symptoms after leaving the epicenter. About 84.3% of patients (166/197) presented symptoms 1 week after leaving the epicenter, and 7 patients (3.6%) had symptoms

2 weeks after leaving the epicenter. Interesting, the peak of symptom onset emerged was on the first day (42 patients). Incubation period was estimated by fitting Weibull distribution, and patients who presented symptoms before departure had been excluded from the analysis. The median incubation period was 3.0 days (interquartile range, 1.0 to 6.0), and the 95th percentile



was 11.6 days (**Figure 5A**). Moreover, cases exported from Africa presented symptoms later than patients exported from other regions ($P = 0.007$), which may be due to the outbreak time varied in different regions (**Table 2**). Studies related to the incubation period are listed in **Table 3**.

Furthermore, we also researched the serial interval of symptom onset to final diagnosed (positive results of nucleic acid test). Two patients presented symptoms after final diagnosed; most cases (92.9%) were detected positively of nucleic acid after symptom onset with 4 days. For symptomatic patients, the median diagnostic time was 2.0 days (interquartile range, 1.0 to 3.0), the 95th percentile of the distribution was 5.0 days, it was showed in **Figure 5B**, furthermore, age and occupation

were associated with diagnostic time ($P = 0.017$ and $P = 0.044$) (**Table 2**).

Finally, the median confirmed time of all patients was 4.0 days (interquartile range, 2.0 to 6.0). It was worth noting that about 5.8% patients were healthy carriers, and the median confirmed time of asymptomatic patients was 4.0 days (interquartile range, 2.0 to 9.0). **Figure 6** showed that the peak of confirmed time was on the third day (139 cases); there were still 37 patients (5.5%) who were final diagnosed 2 weeks after leaving the epicenter. The following variables might be associated with confirmed time: symptom type ($P = 0.005$), exported regions ($P < 0.001$), and symptom onset time ($P < 0.001$) (**Table 4**).

TABLE 2 | Epidemiological characteristics of symptomatic patients imported from abroad.

Variable	Incubation period (days)	IQI ^b	P	Diagnostic time (days)	IQI ^b	P
In total (197)	3.0	(1.0, 6.0)		2.0	(1.0, 2.0)	
Gender			0.116			0.708
Male (87)	4.0	(2.0, 7.0)		1.0	(1.0, 2.0)	
Female (80)	3.0	(1.0, 5.0)		2.0	(1.0, 2.0)	
Age ^a			0.749			0.017
<27 (77)	4.0	(2.0, 6.0)		1.0	(0.0, 2.0)	
≥27 (84)	4.0	(2.0, 6.0)		2.0	(1.0, 2.0)	
Occupation			0.570			0.044
International student (71)	4.0	(1.0, 6.0)		1.0	(1.0, 2.0)	
Non-international students (126)	3.0	(1.0, 6.0)		2.0	(1.0, 2.25)	
Symptoms			0.067			0.307
Fever (89)	4.0	(2.0, 6.0)		2.0	(1.0, 2.0)	
Respiratory symptoms (41)	2.0	(1.0, 6.0)		1.0	(1.0, 2.0)	
Gastrointestinal symptoms (3)	3.0	(2.5, 3.0)		1.0	(1.0, 1.5)	
Other symptom (17)	4.0	(1.0, 7.0)		1.0	(0.5, 2.0)	
Symptoms unknown (47)	1.0	(1.0, 5.0)		2.0	(1.0, 2.0)	
Nationality			0.805			0.815
Foreigner (27)	2.0	(1.0, 8.0)		1.0	(1.0, 2.0)	
Chinese (170)	3.0	(1.0, 6.0)		2.0	(1.0, 2.0)	
Region of cases exported			0.007			0.309
Asia (33)	2.0	(0.0, 5.0)		2.0	(1.0, 3.0)	
Africa (7)	8.0	(3.0, 14.0)		1.0	(1.0, 2.0)	
Europe (114)	3.0	(1.0, 5.0)		1.5	(1.0, 2.0)	
South America (3)	5.0	(5.0, 5.5)		1.0	(1.0, 2.0)	
North America (40)	4.0	(2.0, 6.0)		2.0	(1.0, 3.0)	

^aAge, median age of symptomatic cases. ^bIQI, interquartile intervals.

DISCUSSION

With the global outbreak of COVID-19, the confirmed cases and deaths continue to rise globally (26–29). In China, the domestic epidemic was controlled effectively but the challenge of cross-border COVID-19 transmissions emerged. To our knowledge, this study is the first designed to review the epidemiological characteristics of COVID-19 cases imported from abroad in China. Most of them were exported from Europe and North American, which might be related with the economic and academic exchanges between China and these regions.

Internationally, according to statistics, about 145 million tourists traveled to China from abroad in 2019 (30), and most of them came from Europe and North America. We also know that Europe and North America were the most popular areas for Chinese students (31). The distribution of exported regions

of COVID-19 was associated with above data, and in this study, about 74.3% cases came from Europe and North America and nearly one-third of exported cases were Chinese overseas students. As exported country, previous studies have shown most cases from China had spread to Asian neighbors, followed by Europe (32). In our study, although there were few cases (4.8%) exported from Africa and South America, the imported cases in these two regions could not be ignored. On February 26, the first imported case from Iran was reported; after that, the confirmed increased steadily, as on March 11, COVID-19 was defined as a global pandemic, and the imported cases increased sharply.

Incubation period, from the earliest exposure time to the time of symptoms onset, was necessary for preventing and controlling the epidemic, so numerous studies were focused on this issue. The median incubation period was ranged from 3.9 days to 8.6 days due to the different definition of exposure time (13, 14, 16–19, 21–25, 33, 34). However, in a real world study, most patients could not provide the specific exposure time. It was significant to estimate the incubation period by using the available information. Jing et al. (12) estimated the median incubation period of COVID-19 was 8.13 days (95% CI: 7.37–8.91), and they defined it as from the time of departure from Wuhan City to the symptom onset by using the well-known renewal theory in probability. For the imported cases, preventive measures were formulated based on the incubation period; unfortunately, we could not obtain the definite exposure time, and we supposed that the time of leaving epicenter could predict the progression of COVID-19. In this study, we found that the median incubation of the imported COVID-19 cases was 3.0 days (interquartile range, 1.0 to 6.0) after they leaving the epicenter, shorter than the previous study. The following reasons can explain its short incubation period: a minority of them were infected on the way to China, or the mutations in the novel coronavirus (35). Notably, there were still 3.6% of patients who had symptom 2 weeks after leaving the epicenter, which indicated that the 2-week quarantine period might need to be prolonged. The outbreak of sporadic epidemics since mid-2020 were related to the onset of imported cases after the 2-week quarantine period; therefore, the Chinese government had formulated a 2-week plus 7-day quarantine policy for overseas cases.

We also explored the optimal nucleic acid detection time for imported cases in this study. For the symptomatic patients, the median diagnostic time was 2.0 days after they presented symptoms. A study from South Korea (20) showed that the median of symptom-onset to diagnosis was 5.2 days, the longest time of symptom-onset to diagnosis was 16.0 days reported by Xiao, and a total of 301 patients were analyzed (36). In this study, the positive results of nucleic acid test were detected earlier than the related studies, which might be due to that all inbound population from epicenter were suggested to underwent nucleic acid test when they arrived in China.

Moreover, our experience of fighting the COVID-19 indicated that public health intervention could reduce its transmission (37). The public health intervention, including strictly enforced segregation and travel bans, entry screening, suspension of public transportation in the city, closure of

TABLE 3 | Study list of incubation period of COVID-19 estimation.

References	N	Distribution	Mean, days (95% CI)	Median, days (95% CI)	Percentiles
Zhang et al. (13)	49	Log-normal	5.2 (1.8, 12.4)	-	95th: 10.5
Li et al. (14)	Null	Gamma	7.2 (6.8, 7.6)	-	-
Leung et al. (15)	175	Weibull	(Travelers to Hubei) 1.8 (1.0, 2.7) (Non-travelers) 7.2 (6.1, 8.4)	-	(Travelers to Hubei) 95th: 3.2 (Non-travelers) 95th: 14.6
Qian et al. (16)	262	-	6.7	-	-
Ping et al. (17)	758(93)	Log-normal	-	8.06 (6.9, 9.4).	95th: 21.9
Qian et al. (16)	91	-	-	6 (3.0, 8.0)	-
Wang et al. (18)	483	Logarithm normal	7.4	7.0	-
Lu et al. (19)	265	Weibull	6.4 (5.3, 7.6)	-	5th: 1.0 95th: 13.1
Ki et al. (20)	28	-	3.9 (0, 15.0)	3.0	-
Guan et al. (21)	1,099	-	-	4.0 (2.0, 7.0)	-
Li et al. (14)	10	Log-normal	5.2 (4.1, 7.0)	-	95th:12.5(9.2, 18)
Backer et al. (22)	88	Weibull Gamma Lognormal	6.4 (5.6, 7.7) 6.5 (5.6, 7.9) 6.8 (5.7, 8.8)	-	95th:10.3 (8.6, 14.1) 95th:11.3 (9.1, 15.7) 95th:13.3 (9.9, 20.5)
Lauer et al. (23)	181	Outside mainland China (n = 108).	-	5.5 (4.4, 7.0)	95th: (2.1, 14.7)
Lauer et al. (23)	181	Inside mainland China (n = 73) -	-	4.8 (4.2, 5.6)	95th: (2.5, 9.2)
Lauer et al. (24)	181	Lognormal	-	5.1 (4.5,5.8)	97.5th: 11.5 (8.2,15.6)
Linton et al. (25)	Excluding Wuhan residents (n = 52)	Lognormal Weibull Gamma	5.0 (4.2, 6.0) 5.4 (4.3, 6.6) 5.3(4.3, 6.6)	4.3(3.5, 5.1) 4.7(3.6, 5.8) 4.7(3.8,5.7)	95th:10.6 (8.5, 14.1) 95th:12.0 (9.8, 15.6) 95th:11.3 (9.2, 14.5)
Linton et al. (25)	Including Wuhan residents (n = 158).	Lognormal Weibull Gamma	5.6 (5.0, 6.3) 5.8 (5.2, 6.5) 6.0 (5.3, 6.7)	5.0(4.4, 5.6) 5.3(4.7, 6.0) 5.6(4.9, 6.4)	95th:10.8 (9.3, 12.9) 95th:11.0 (9.6, 12.9) 95th:11.7 (10.3, 13.4)
Jing et al. (12)	1,211	Weibull	8.6 (8.0, 9.23)	8.1 (7.4, 8.9)	90th:14.7 (14.0, 15.3) 99th:20.6(19.5, 21.6)
Han et al. (24)	59	Monte Carlo simulation	5.8	5.0	-

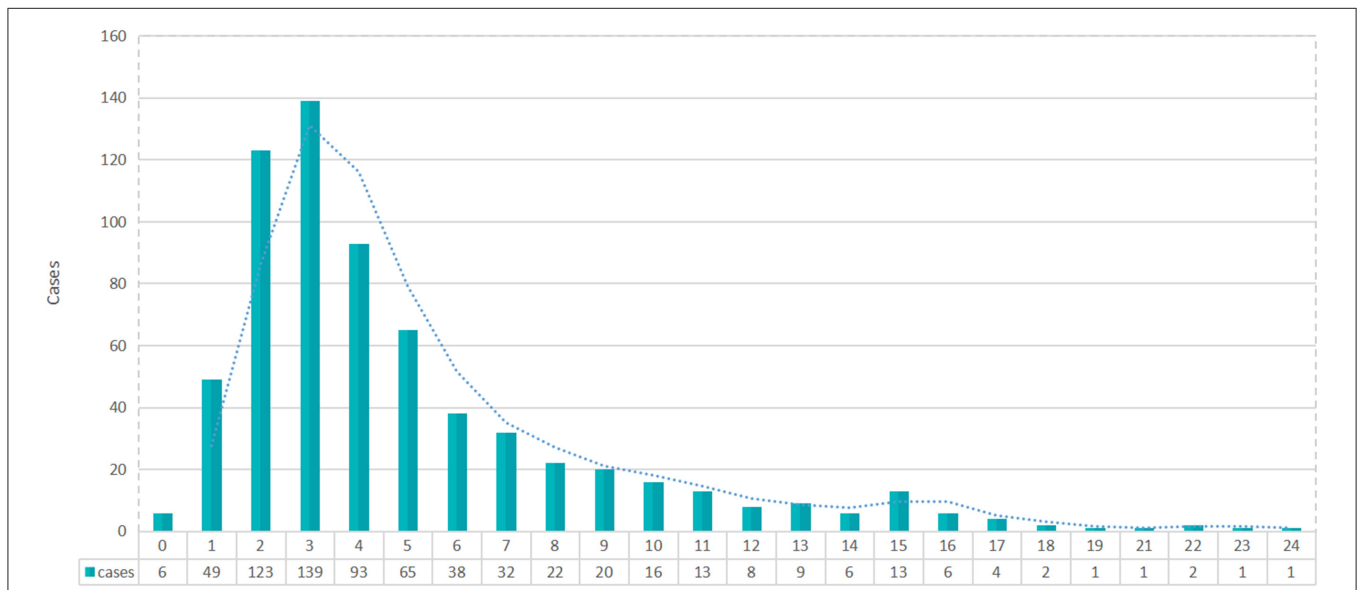


FIGURE 6 | Distribution of confirmed time after confirmed cases leave the epidemic area.

TABLE 4 | Confirmed time of imported COVID-19 patients.

Variable	Confirmed time (median, days)	IQI ^b	P
In total (670)	4.0	(2.0, 6.0)	
Gender			0.776
Male (269)	4.0	(2.0, 7.0)	
Female (209)	4.0	(2.0, 7.0)	
Age ^a			0.281
<30 (228)	3.0	(2.0, 6.0)	
≥30 (230)	4.0	(2.0, 7.0)	
Occupation			0.1
International student (220)	4.0	(3.0, 6.0)	
Non-international students (450)	4.0	(2.0, 6.25)	
Symptoms			0.005
Fever (107)	5.0	(3.0, 8.0)	
Respiratory symptoms (65)	3.0	(2.0, 6.0)	
Gastrointestinal symptoms (4)	4.0	(3.25, 4.75)	
Other symptom (26)	3.0	(2.0, 5.5)	
Without symptom (39)	4.0	(2.0, 9.0)	
Symptoms unknown (429)	4.0	(3.0, 6.0)	
Nationality			0.066
Foreigner (115)	4.0	(3.0, 8.0)	
Chinese (555)	4.0	(2.0, 6.0)	
Region of cases exported			<0.001
Asia (100)	4.0	(2.0, 7.0)	
Africa (24)	8.0	(4.25, 13.75)	
Europe (398)	3.0	(2.0, 5.0)	
South America (8)	8.5	(7.25, 9.75)	
North America (140)	4.0	(3.0, 7.0)	
Symptoms onset			<0.001
Symptom onset is clear (234)	4.0	(3.0, 7.0)	
Symptoms during isolation (79)	6.0	(4.0, 8.0)	
Asymptomatic (39)	4.0	(2.0, 9.0)	
Unknown time of symptoms (318)	3.0	(2.0, 5.0)	

^aAge, median age of all cases. ^bIQI, interquartile intervals.

entertainment venues, and bans on public gatherings, played an important role in controlling the epidemic (38–40). One study proved that the Wuhan City shutdown delayed the spread of COVID-19 to other cities for 2.91 days (95% CI: 2.54–3.29) (39). Therefore, on March 28 (11), China was compelled to temporarily suspend the entry of foreign passport holders with valid visas or residence permits. Apparently both arrived cases and confirmed cases had significantly decreased.

Finally, with asymptomatic patients, because the condition was hidden and might be contagious, we should be more vigilant. In our study, 39 asymptomatic patients were detected during their quarantine. A study about a health carrier from Wuhan caused widespread concern, she transmitted new coronavirus to her five family relatives, but she did not present any symptoms during her disease course (41). A series of subsequent studies

confirmed that asymptomatic patients were infectious (42–45). The median of confirmed of asymptomatic patients was 4.0 days, basically consistent with symptomatic patients. Therefore, nucleic acid testing of all immigrants was essential for screening asymptomatic patients.

The shortcoming of this study was that the retrospective study did not include all people returning from overseas (243 cases were lost), so it could not represent the epidemiological characteristics of all imported confirmed cases; secondly, we estimated the incubation period for COVID-19; the departure time from the epidemic area was recognized as the exposure time, which may lead to a reduction in the real incubation period. Third, we could not quantify that interventions had multiple indirect effects on changes in human behavior. Finally, most patients were still in hospital, so the clinical outcomes had not been analyzed.

It is important to plan for the early stages of imported cases from overseas during a pandemic to avoid a national outbreak. In this study, we investigated the epidemiological characteristics of COVID-19 imported from overseas and observed interventions implemented by the government. We found that the departure time from epicenter could be used to predict the progression of the COVID-19. Promulgation of a ban on entry, a combination of quarantine, and quarantine methods was effective. For imported cases, the 2-week quarantine period might need to be prolonged and asymptomatic patients should be closely monitored.

DATA AVAILABILITY STATEMENT

The original contributions presented in the study are included in the article/supplementary material, further inquiries can be directed to the corresponding author/s.

ETHICS STATEMENT

The studies involving human participants were reviewed and approved by Ethics Committee of Tangdu Hospital. The patients/participants provided their written informed consent to participate in this study.

AUTHOR CONTRIBUTIONS

TJ, JZha, and WuW participated in study design and study conception. JZhu, QZ, CJ, SX, JL, HW, and ZZ performed data analysis. JZhu, QZ, CJ, SX, JC, YX, WeW, XW, and MW recruited patients. JZhu, QZ, CJ, WuW, and JC drafted the manuscript. All authors provided critical review of the manuscript and approved the final draft for publication.

FUNDING

This research was supported by grants from the Wu Jieping Medical Foundation (320.6750.17527) and the Provincial Key R & D Program of Shaanxi (2017ZDCXL-SF-01-04-01).

REFERENCES

1. *Novel Coronavirus—China*. (2020). Available online at: <https://www.who.int/csr/don/12-january-2020-novel-coronavirus-china/en/> (accessed January 12, 2020).
2. Hui DS, Azhar EI, Madani TA, Ntoumi F, Kock R, Dar O, et al. The continuing 2019-nCoV epidemic threat of novel coronaviruses to global health—The latest 2019 novel coronavirus outbreak in Wuhan, China. *Int J Infect Dis*. (2020) 91:264–6. doi: 10.1016/j.ijid.2020.01.009
3. *Coronavirus Disease (COVID-2019) Situation*. Available online at: [https://www.who.int/docs/default-source/coronaviruse/situation-reports/20200311-sitrep-51-covid-19.pdf?sfvrsn=\\$1ba62e57_10](https://www.who.int/docs/default-source/coronaviruse/situation-reports/20200311-sitrep-51-covid-19.pdf?sfvrsn=$1ba62e57_10) (accessed March 11, 2020).
4. *Coronavirus Outbreak is a Pandemic, Says WHO*. Available online at: <https://www.who.int/zh/dg/speeches/detail/who-director-general-s-opening-remarks-at-the-media-briefing-on-covid-19-11-march-2020> (accessed March 11, 2020).
5. *China Daily in March 28, 2020*. Available online at: <https://www.chinadaily.com.cn/a/202003/28/WS5e7f2ba6a310128217282b8c.html> (accessed March 28, 2020).
6. *Chongqing Center for Disease Control and Prevention*. Available online at: <http://www.cqcdc.org/html/content/20/03/4617.shtml> (accessed March 25, 2020).
7. *Shanxi Provincial Center for Disease Control and Prevention*. Available online at: <http://www.sxcdc.cn/Article/20196.html> (accessed March 10, 2020).
8. *The Confirmed Cases of Imported New Coronary Pneumonia in Ningxia were Isolated After Arriving in Zhongwei City, and Have Been Intensively Treated on the 26th*. Available online at: <https://wap.peopleapp.com/article/5208841/5110610> (accessed February 26, 2020).
9. *Press Conference of Guangzhou Municipal Government*. Available online at: http://www.gz.gov.cn/zt/gzsrzmfzxfwbh/fbt/content/post_5744314.html (accessed March 18, 2020).
10. *National Health Commission of the People's Republic of China*. Available online at: <http://www.nhc.gov.cn/xcs/yqtb/202003/c521093a01734df3b3fbc156064ba19f.shtml> (accessed March 27, 2020).
11. *People's Republic of China Ministry of Foreign Affairs*. Available online at: <https://www.mfa.gov.cn/web/zyxw/t1761858.shtml> (accessed March 26, 2020).
12. Jing Q, You C, Lin QS, Hu TJ, Yu SC, Zhou XH, et al. Estimation of incubation period distribution of COVID-19 using disease onset forward time: a novel cross-sectional and forward follow-up study. *Sci Adv*. (2020). 6:c1202. doi: 10.1126/sciadv.abc1202
13. Zhang JJ, Litvinova M, Wang W, Wang Y, Deng XW, Chen XH, et al. Evolving epidemiology and transmission dynamics of coronavirus disease 2019 outside Hubei province, China: a descriptive and modelling study. *Lancet Infect Dis*. (2020) 20:93–802. doi: 10.1016/S1473-3099(20)30230-9
14. Li Q, Guan X, Wu P, Wang XY, Zhou L, Tong YQ, et al. Early transmission dynamics in Wuhan, China, of novel coronavirus-infected pneumonia. *N Engl J Med*. (2020) 382:1199–207. doi: 10.1056/NEJMoa2001316
15. Leung C. The difference in the incubation period of 2019 novel coronavirus (SARS-CoV-2) infection between travelers to Hubei and nontravelers: the need for a longer quarantine period. *Infect Control Hosp Epidemiol*. (2020) 41:594–6. doi: 10.1017/ice.2020.81
16. Qian GQ, Yang NB, Ding F, Ma AHY, Wang ZY, Shen YE, et al. Epidemiologic and clinical characteristics of 91 hospitalized patients with COVID-19 in Zhejiang, China: a retrospective, multi-centre case series. *QJM*. (2020) 113:474–81. doi: 10.1093/qjmed/hcaa089
17. Ping KK, Lei MY, Gou Y. Epidemiologic characteristics of COVID-19 in Guizhou, China. *J Infect Dev Ctries*. (2021). 15:389–97. doi: 10.3855/jidc.12818
18. Wang P, Lu J-a, Jin Y, Zhu M, Wang L, Chen S. Statistical and network analysis of 1212 COVID-19 patients in Henan, China. *Int J Infect Dis*. (2020) 95:391–8. doi: 10.1016/j.ijid.2020.04.051
19. Lu HZ, Ai JW, Shen YZ, Li Y, Li T, Zhou X, et al. A descriptive study of the impact of diseases control and prevention on the epidemics dynamics and clinical features of SARS-CoV-2 outbreak in Shanghai, lessons learned for metropolis epidemics prevention. *medRxiv [Preprint]*. (2020). doi: 10.1101/2020.02.19.20025031
20. Ki M, Task Force for-nCoV V. Epidemiologic characteristics of early cases with 2019 novel coronavirus(2019-nCoV) disease in Korea. *Epidemiol Health*. (2020) 42:e2020007. doi: 10.4178/epih.e2020007
21. Guan WJ, Ni ZY, Hu Y, Liang WH, Ou CQ, He JX, et al. Clinical Characteristics of coronavirus disease 2019 in China. *N Engl J Med*. (2020) 382:1708–20. doi: 10.1056/NEJMoa2002032
22. Backer JA, Klinkenberg D, Wallinga J. Incubation period of 2019 novel coronavirus(2019-nCoV) infections among travellers from Wuhan, China, 20–28 January 2020. *Euro Surveill*. (2020) 25:2000062. doi: 10.2807/1560-7917.ES.2020.25.5.2000062
23. Lauer SA, Grantz KH, Bi Q, Jones FK, Zheng QL, Meredith HR, et al. The incubation period of coronavirus disease 2019(COVID-19)from publicly reported confirmed cases: estimation and application. *Ann Intern Med*. (2020) 172:577–82. doi: 10.7326/M20-0504
24. Han H. Exploring the association between compliance with measures to prevent the spread of COVID-19 and big five traits with Bayesian generalized linear model. *Pers Individ Dif*. (2021) 176:110787. doi: 10.1016/j.paid.2021.110787
25. Linton NM, Kobayashi T, Yang Y, Hayashi K, Akhmetzhanov AR, Jung S, et al. Incubation period and other epidemiological characteristics of 2019 novel coronavirus infections with right truncation: a statistical analysis of publicly available case data. *J Clin Med*. (2020) 9:538. doi: 10.3390/jcm9020538
26. Zhao S, Zhuang Z, Cao P, Cao PH, Ran JJ, Gao DZ, et al. Quantifying the association between domestic travel and the exportation of novel coronavirus(2019-nCoV)cases from Wuhan, China in 2020: a correlational analysis. *J Travel Med*. (2020) 27:taaa022. doi: 10.1093/jtm/taaa022
27. Bogoch, II, Watts A, Thomas-Bachli A, Huber C, Kraemer M, Khan K, et al. Pneumonia of unknown aetiology in Wuhan, China: potential for international spread via commercial air travel. *J Travel Med*. (2020) 27:taaa008. doi: 10.1093/jtm/taaa008
28. Wu JT, Leung K, Leung GM. Nowcasting and forecasting the potential domestic and international spread of the 2019-nCoV outbreak originating in Wuhan, China: a modelling study. *Lancet*. (2020) 395:689–97. doi: 10.1016/S0140-6736(20)30260-9
29. Findlater A, Bogoch, II. Human mobility and the global spread of infectious diseases: a focus on air travel. *Trends Parasitol*. (2018) 34:772–83. doi: 10.1016/j.pt.2018.07.004
30. *Basic Situation of the Tourism Market in 2019*. Available online at: <https://mp.weixin.qq.com/s/VQ4VVeV-rmiZq8oAUWN9Q> (accessed March 10, 2020).
31. *Overseas Chinese Students*. Available online at: <http://zz.sll.cn/news/01083742.html> (accessed October 31, 2019).
32. Haider N, Yavlinsky A, Simons D, Osman AY, Ntoumi F, Zumla A, et al. Passengers' destinations from China: low risk of Novel Coronavirus (2019-nCoV)transmission into Africa and South America. *Epidemiol Infect*. (2020) 148:e41. doi: 10.1017/S0950268820000424
33. Li ML, Chen P, Yuan QQ. Transmission characteristics of the COVID-19 outbreak in China: a study driven by data. *medRxiv*. (2020).
34. Tian S, Hu N, Lou J, Chen K, Kang XQ, Xiang ZJ, et al. Characteristics of COVID-19 infection in Beijing. *J Infect*. (2020) 80:401–6. doi: 10.1016/j.jinf.2020.02.018
35. Forster P, Forster L, Renfrew C, Forster M. Phylogenetic network analysis of SARS-CoV-2 genomes. *Proc Natl Acad Sci USA*. (2020) 117:9241–3. doi: 10.1073/pnas.2004999117
36. Xiao AT, Tong YX, Gao C. Dynamic profile of RT-PCR findings from 301 COVID-19 patients in Wuhan, China: a descriptive study. *SSRN*. (2020)127:104346. doi: 10.2139/ssrn.3548769
37. Iwata K, Miyakoshi C. A simulation on potential secondary spread of novel coronavirus in an exported country using a stochastic epidemic SEIR model. *J Clin Med*. (2020) 9:E944. doi: 10.3390/jcm9040944
38. Boldog P, Tekeli T, Vizi Z, Dénes A, Bartha FA, Röst G. Risk assessment of novel coronavirus COVID-19 outbreaks outside China. *J Clin Med*. (2020) 9:571. doi: 10.3390/jcm9020571
39. Tian H, Liu Y, Li Y, Wu C, Chen B, Kraemer M, et al. An investigation of transmission control measures during the first 50 days of the COVID-19 epidemic in China. *Science*. (2020) 368:638–42. doi: 10.1126/science.abb6105
40. Zhou XK, Wu ZG, Yu RR, Cao SN, Fang W, Jiang Z, et al. Modelling-based evaluation of the effect of quarantine control by the Chinese government

- in the coronavirus disease 2019 outbreak. *Sci China Life Sci.* (2020) 63:1–4. doi: 10.1007/s11427-020-1717-9
41. Bai Y, Yao L, Wei T, Tian F, Jin DY, Chen L, et al. Presumed asymptomatic carrier transmission of COVID-19. *JAMA.* (2020) 323:1406–7. doi: 10.1001/jama.2020.2565
42. Wolfel R, Corman VM, Guggemos W, Seilmaier M, Zange S, Müller MA, et al. Virological assessment of hospitalized patients with COVID-2019. *Nature.* (2020) 581:465–9. doi: 10.1038/s41586-020-2196-x
43. Lai CC, Liu YH, Wang CY, Wang Y-H, Hsueh S-C, Yen M-Y, et al. Asymptomatic carrier state, acute respiratory disease, and pneumonia due to severe acute respiratory syndrome coronavirus 2(SARS-CoV-2): facts and myths. *J Microbiol Immunol Infect.* (2020) 53:404–12. doi: 10.1016/j.jmii.2020.02.012
44. Huang R, Xia J, Chen YX, Wang YH, Hsueh SC, Yen M, et al. A family cluster of SARS-CoV-2 infection involving 11 patients in Nanjing, China. *Lancet Infect Dis.* (2020) 20:534–5. doi: 10.1016/S1473-3099(20)30147-X
45. Rothe C, Schunk M, Sothmann P, Bretzel G, Froeschl G, Wallrauch C, et al. Transmission of 2019-nCoV infection from an asymptomatic contact in Germany. *N Engl J Med.* (2020) 382:970–1. doi: 10.1056/NEJMc2001468

Conflict of Interest: The authors declare that the research was conducted in the absence of any commercial or financial relationships that could be construed as a potential conflict of interest.

Copyright © 2021 Zhu, Zhang, Jia, Xu, Lei, Chen, Xia, Wang, Wang, Wen, Wang, Zhang, Wang, Zhao and Jiang. This is an open-access article distributed under the terms of the Creative Commons Attribution License (CC BY). The use, distribution or reproduction in other forums is permitted, provided the original author(s) and the copyright owner(s) are credited and that the original publication in this journal is cited, in accordance with accepted academic practice. No use, distribution or reproduction is permitted which does not comply with these terms.