



Lung Recruitment, Individualized PEEP, and Prone Position Ventilation for COVID-19-Associated Severe ARDS: A Single Center Observational Study

Ling Sang^{1†}, Xia Zheng^{2†}, Zhanqi Zhao^{3,4}, Min Zhong⁵, Li Jiang⁶, Yongbo Huang¹, Xiaqing Liu¹, Yimin Li^{1*} and Dingyu Zhang^{7,8*}

OPEN ACCESS

Edited by:

Alberto Enrico Maraolo,
University of Naples Federico II, Italy

Reviewed by:

Ling Liu,
Southeast University, China
Nicolas Nin,
Hospital Español Dr. Juan José
Crotogini, Uruguay

*Correspondence:

Yimin Li
dryiminli@vip.163.com
Dingyu Zhang
1813886398@qq.com

†These authors have contributed
equally to this work

Specialty section:

This article was submitted to
Intensive Care Medicine and
Anesthesiology,
a section of the journal
Frontiers in Medicine

Received: 08 September 2020

Accepted: 17 December 2020

Published: 22 January 2021

Citation:

Sang L, Zheng X, Zhao Z, Zhong M,
Jiang L, Huang Y, Liu X, Li Y and
Zhang D (2021) Lung Recruitment,
Individualized PEEP, and Prone
Position Ventilation for
COVID-19-Associated Severe ARDS:
A Single Center Observational Study.
Front. Med. 7:603943.
doi: 10.3389/fmed.2020.603943

¹ State Key Lab of Respiratory Diseases, Department of Critical Care Medicine, Guangzhou Institute of Respiratory Health, The First Affiliated Hospital of Guangzhou Medical University, Guangzhou, China, ² Department of Critical Care Medicine, The First Affiliated Hospital of Zhejiang University, Hangzhou, China, ³ Department of Biomedical Engineering, Fourth Military Medical University, Xi'an, China, ⁴ Institute of Technical Medicine, Furtwangen University, Villingen-Schwenningen, Germany, ⁵ Department of Critical Care Medicine, Zhongshan Hospital, Fudan University, Shanghai, China, ⁶ Department of Critical Care Medicine, Xuanwu Hospital, Capital Medical University, Beijing, China, ⁷ Research Center for Translational Medicine, Wuhan Jinyintan Hospital, Wuhan, China, ⁸ Joint Laboratory of Infectious Diseases and Health, Wuhan Institute of Virology and Wuhan Jinyintan Hospital, Chinese Academy of Sciences, Wuhan, China

Background: Patients with coronavirus disease 2019 (COVID-19) may develop severe acute respiratory distress syndrome (ARDS). The aim of the study was to explore the lung recruitability, individualized positive end-expiratory pressure (PEEP), and prone position in COVID-19-associated severe ARDS.

Methods: Twenty patients who met the inclusion criteria were studied retrospectively (PaO₂/FiO₂ 68.0 ± 10.3 mmHg). The patients were ventilated under volume-controlled mode with tidal volume of 6 mL/kg predicted body weight. The lung recruitability was assessed via the improvement of PaO₂, PaCO₂, and static respiratory system compliance (C_{stat}) from low to high PEEP (5–15 cmH₂O). Patients were considered recruitable if two out of three parameters improved. Subsequently, PEEP was titrated according to the best C_{stat}. The patients were turned to prone position for further 18–20 h.

Results: For recruitability assessment, average value of PaO₂ was slightly improved at PEEP 15 cmH₂O (68.0 ± 10.3 vs. 69.7 ± 7.9 mmHg, baseline vs. PEEP 15 cmH₂O; *p* = 0.31). However, both PaCO₂ and C_{stat} worsened (PaCO₂: 72.5 ± 7.1 vs. 75.1 ± 9.0 mmHg; *p* < 0.01. C_{stat}: 17.5 ± 3.5 vs. 16.6 ± 3.9 ml/cmH₂O; *p* = 0.05). Only four patients (20%) were considered lung recruitable. Individually titrated PEEP was higher than the baseline PEEP (8.0 ± 2.1 cmH₂O vs. 5 cmH₂O, *p* < 0.001). After 18–20 h of prone positioning, investigated parameters were significantly improved compared to the baseline (PaO₂: 82.4 ± 15.5 mmHg. PaCO₂: 67.2 ± 6.4 mmHg. C_{stat}: 20.6 ± 4.4 ml/cmH₂O. All *p* < 0.001 vs. baseline).

Conclusions: Lung recruitability was very low in COVID-19-associated severe ARDS. Individually titrated PEEP and prone positioning might improve lung mechanics and blood gasses.

Keywords: coronavirus disease 2019, acute respiratory distress syndrome, lung recruitability, PEEP titration, prone position ventilation

INTRODUCTION

The rapid outbreak of coronavirus disease 2019 (COVID-19) has recently become a public health emergency of international concern (1). As of March 30, 2020, a total of 693,224 confirmed cases globally with 33,106 deaths (4.8%) had been reported by WHO (2). According to the result of a recent study, 16% of the COVID-19 patients developed to the severe cases, and 3.1% required invasive mechanical ventilation due to acute respiratory distress (ARDS) syndrome in China (3). Although the lung protective ventilation (LPV) strategy has been accepted worldwide (4), detailed clinical practices remain controversial due to the heterogeneity of ARDS. So far, the research revealing pathophysiology of COVID-19-associated ARDS is limited. The best approach of LPV is yet to be found. CT findings of COVID-19 patients suggested that opacities presented from focal unilateral to diffuse bilateral within 1–3 weeks (5, 6). A previous multicenter randomized controlled study suggested that patients with focal ARDS should receive low positive end-expiratory pressure (PEEP), prone position, and no recruitment maneuver (7). We hypothesized that even in a later stage of COVID-19, lung recruitability of severe ARDS was low, and the prone position could be beneficial. The aim of the present study was to examine our hypothesis in a retrospective cohort.

METHODS

Design

This was a retrospective cohort study conducted in a 16-bed academic intensive care unit (ICU) at Jinyintan Hospital, which is one of the designated hospitals for COVID-19 patients in Wuhan, China. The authors Dr. Ling Sang and Dr. Xia Zheng were in charge of this ICU directly, according to the arrangement of the National Health Committee in the period of the COVID-19 outbreak. Local institutional research ethics board approved the study and the informed consent was waived due to the nature of the retrospective study.

Patients

The consecutive laboratory-confirmed COVID-19 patients, who met the criteria of severe ARDS (8) and received invasive mechanical ventilation from Feb 8 to Feb 29 2020, were included in the study. Patients in early stage of COVID-19 (i.e., symptom

onset <14 days) were not included. Further exclusion criteria included undrained pneumothorax, hemodynamic instability, obstructive lung disease, and other contraindications for high PEEP of 15 cmH₂O or prone positioning.

Measurement

Patients were paralyzed with propofol, midazolam, Remifentanyl, and Cisatracurium and ventilated under volume-controlled mode with SV300 (Mindray, Shenzhen, China). To stabilize hemodynamics, continuous infusion was administered, and the vital signs were closely monitored (patient monitoring systems from various manufactories). The assessment of lung recruitability and the prone-position efficacy were routinely performed according to our internal guideline for severe ARDS patients as soon as they were transferred to the ICU. In brief, the patients were first ventilated at the baseline with the following

TABLE 1 | Baseline characteristics and clinical measures of the study patients.

Pat. No.	Gender	Age (yr)	APACHE II	Tidal volume (ml)	PaO ₂ /FiO ₂ (mmHg)	C _{stat} (ml/cmH ₂ O)
1	M	48	21	420	69	16.8
2	M	67	23	390	72	13.4
3	M	75	27	400	68	16.0
4	M	68	26	400	59	20.0
5	M	78	22	380	55	11.5
6	F	68	19	360	73	12.9
7	M	70	26	360	81	13.8
8	M	69	20	430	94	18.7
9	M	77	24	420	73	22.1
10	F	76	27	420	71	22.1
11	F	69	22	380	58	14.6
12	M	68	28	380	55	19.0
13	F	68	26	400	61	17.4
14	M	58	21	380	64	15.8
15	F	76	29	390	71	17.7
16	M	77	23	330	67	14.3
17	M	70	26	400	57	20.0
18	F	88	30	400	68	22.2
19	F	48	18	450	58	17.3
20	F	71	24	380	85	23.8
Mean	M:F 12:8	69.5	24.1	393.5	68.0	17.5
SD		9.5	3.4	27.2	10.3	3.5

Pat. No., patient number; M, male; F, female; APACHE, acute physiology and chronic health evaluation; PaO₂/FiO₂, ratio of arterial partial pressure of oxygen and fraction of inspired oxygen; C_{stat}, static respiratory system compliance; SD, standard deviation.

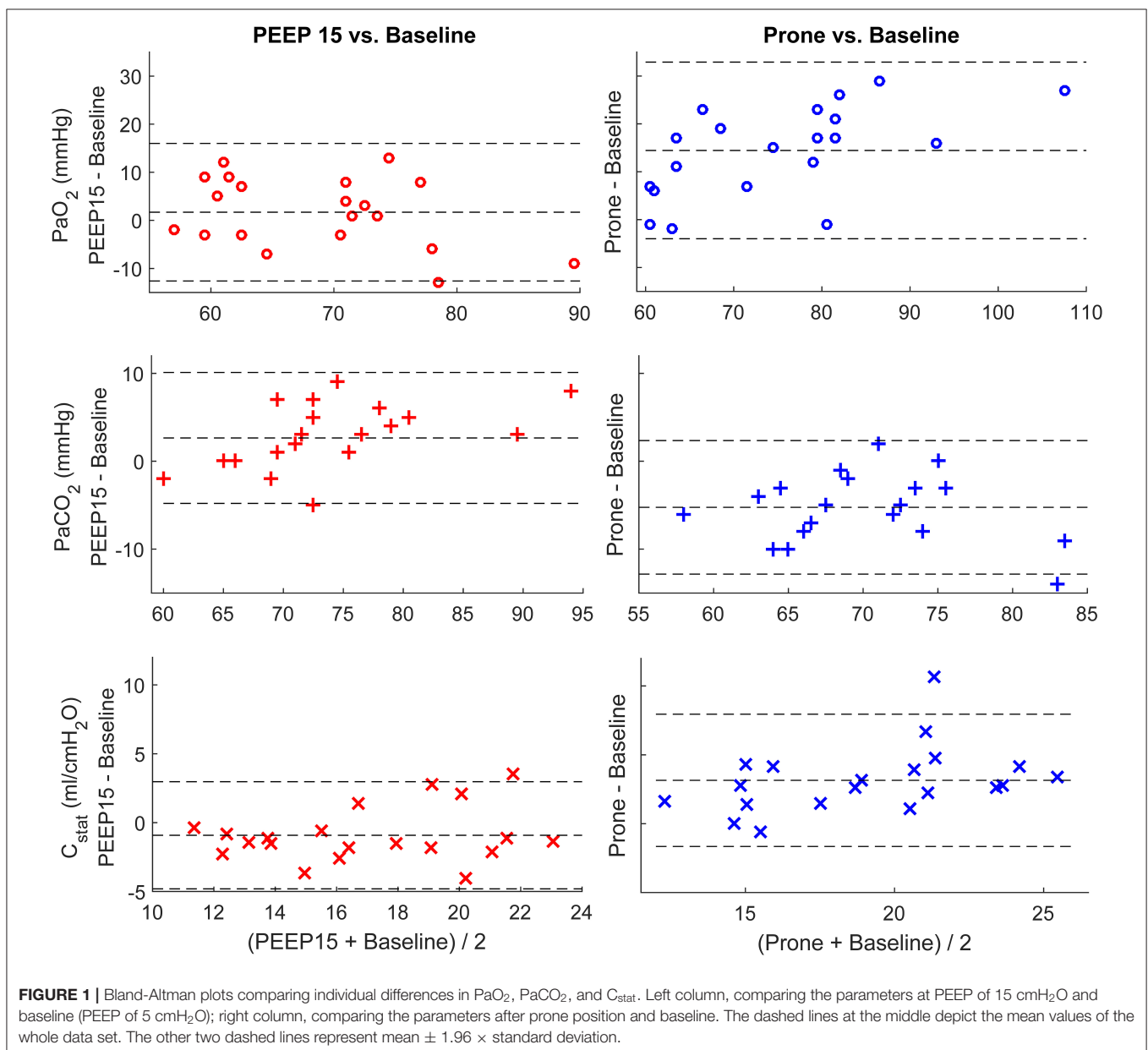
Abbreviations: COVID-19, coronavirus disease 2019; ARDS, acute respiratory distress syndrome; PEEP, positive end-expiratory pressure; C_{stat}, static respiratory system compliance; LPV, lung protective ventilation; ICU, intensive care units; FiO₂, fraction of inspiratory oxygen; PaO₂, arterial partial pressure of oxygen; PaCO₂, arterial partial pressure of carbon dioxide; P_{peak}, peak pressure; P_{plat}, plateau pressure; P_{driving}, Driving pressure; SD, standard deviation.

initial settings: tidal volume 6 mL/kg of predicted body weight; inspiratory time 0.9 s; PEEP of 5 cmH₂O; respiratory rate 25 breaths per min, and fraction of inspiratory oxygen (FiO₂) 100%. After 5 min of the baseline period, PEEP was increased to 15 cmH₂O for a further 5 min (the other ventilator settings remained unchanged). At the end of each PEEP phase, a 3-s end-inspiratory hold was performed. Various pressure values (peak pressure, P_{peak} ; plateau pressure, P_{plat}) and the results of blood gas analysis (arterial oxygen partial pressure, PaO₂ and arterial carbon dioxide partial pressure, PaCO₂) were recorded. Driving pressure (P_{driving}) was calculated as $P_{\text{plat}} - \text{PEEP}$. Static respiratory system compliance (C_{stat}) was calculated as tidal volume divided by P_{driving} . If two of the following three parameters improved—PaO₂ (increase), PaCO₂ (decrease), and

C_{stat} (increase)—the patient was considered recruitable (9). Decremental PEEP trial with steps of 2 cmH₂O and duration of 2 min was conducted subsequently to determine a proper PEEP based on the best C_{stat} . Finally, patients were turned to prone position for 18–20 h with the ventilator settings unchanged. Before the patients were turned back to supine position, the lung mechanics and blood gases were again collected.

Statistical Analysis

Data analysis was performed using MATLAB R2015a (The MathWorks Inc., Natick, USA). The Lilliefors test was used for normality testing. For normally distributed data, results were expressed as mean \pm standard deviation (SD). Bland-Altman analysis was used to show the differences in the lung



mechanics and blood gasses between different time points and baselines. Two-tailed paired-sample *t*-test was used to assess if the improvements of lung mechanics and blood gasses were significant. $P < 0.05$ was considered statistically significant.

TABLE 2 | Summary of the mean and SD of the investigated parameters at different time points.

Parameters	Baseline	PEEP 15	<i>P</i> vs. Baseline	After Prone	<i>P</i> vs. Baseline
PaO ₂ (mmHg)	68.0 ± 10.3	69.7 ± 7.9	0.31	82.4 ± 15.5	<0.001*
PaCO ₂ (mmHg)	72.5 ± 7.1	75.1 ± 9.0	<0.01*	67.2 ± 6.4	<0.001*
C _{stat} (ml/cmH ₂ O)	17.5 ± 3.5	16.6 ± 3.9	0.05	20.6 ± 4.4	<0.001*

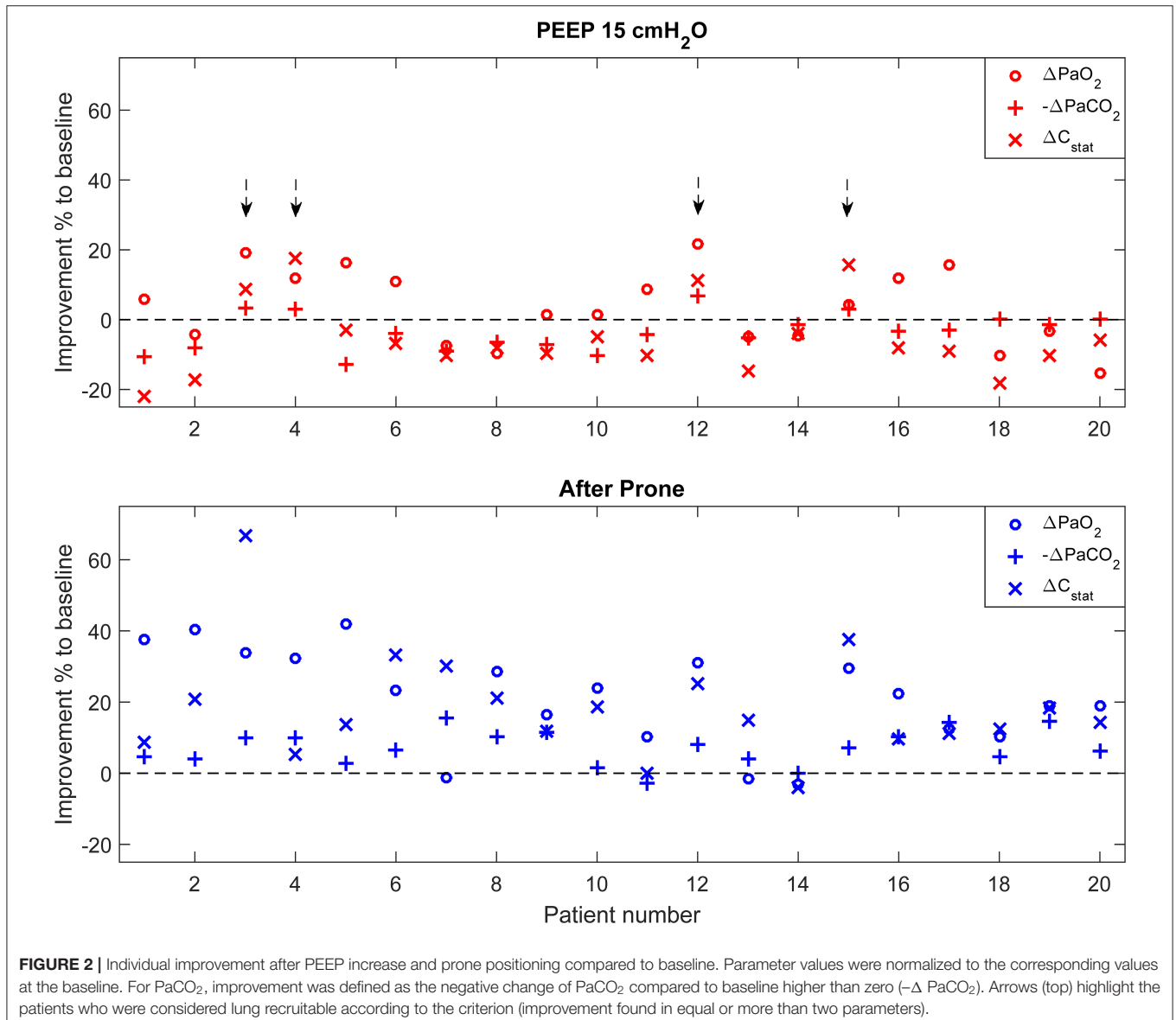
*Indicates a statistically significant difference compared to the baseline.

Bonferroni correction was used to adjust the *p*-value for multiple comparisons.

RESULTS

A total of 20 patients who met the criteria were included in the analysis. Baseline characteristics and clinical measures were summarized in **Table 1**. The PaO₂/FiO₂ values and C_{stat} of these patients were extremely low (68.0 ± 10.3 mmHg for PaO₂/FiO₂; 17.5 ± 3.5 ml/cmH₂O for C_{stat}).

The changes of PaO₂, PaCO₂, and C_{stat} between a PEEP of 15 cmH₂O and the baseline are plotted in **Figure 1** left column. The mean and SD are also compared in **Table 2**. The average value of PaO₂ was slightly improved. However, both PaCO₂ and C_{stat} worsened at a PEEP of 15 cmH₂O. The titrated PEEP after recruitability assessment was significantly higher than the



baseline one (8.0 ± 2.1 cmH₂O, $p < 0.001$) and lower than a PEEP of 15 cmH₂O ($p < 0.001$). After 18–20 h in the prone positioning, all three parameters were significantly improved (**Figure 1** right column; **Table 2**).

Figure 2 summarizes individual improvement after PEEP increase and prone positioning. Four out of 20 patients (20%) were considered lung recruitable according to the criterion (**Figure 2** top). On the other hand, 18 patients (90%) had improvements in more than two parameters after 18–20 h in the prone position (**Figure 2** bottom).

DISCUSSION

In the present study, we have several findings regarding the patient cohort (COVID-19 patients with PaO₂/FiO₂ <100 mmHg): (1) low PaO₂ and C_{stat}, high PaCO₂ despite of high respiratory rate (25 breaths per min); (2) the lung recruitability was low in most of the studied subjects (16 out of 20 were non-recruitable, 80%); (3) increased PaCO₂ and decreased C_{stat} at PEEP of 15 cmH₂O compared to baseline indicated that previously ventilated alveoli were already overdistended; and (4) individualized PEEP and prone position significantly improved PaO₂, PaCO₂, and C_{stat}.

COVID-19 does not lead to a classical ARDS. A recent study suggested that COVID-19-associated ARDS has low recruitability (10). Knowing that the opacities in the patients' lungs would develop to diffuse bilateral within 1–3 weeks (5, 6), which might be more recruitable (7), we designed this retrospective study to analyze COVID-19 patients who had the onset of symptoms over 2 weeks. Although the methods of assessing lung recruitability were different to the previous study (10), the findings were comparable (80 vs. 83% patients poorly recruitable). We noticed that our subjects had high PaCO₂, and therefore the respiratory rate was set to 25 breaths per min. However, despite such a high minute volume (9.8 ± 0.7 liter), PaCO₂ still increased at a PEEP of 15 cmH₂O, which indicated a dramatic increase of dead space. Combining the observation that C_{stat} was extremely low and decreased at a PEEP of 15 cmH₂O, we speculated that a PEEP of 15 cmH₂O was too high and introduced overdistension in opened lung alveoli. Driving pressure in our study subjects was relatively high, but given the remarkably poor blood gasses and lung mechanics, tidal volume could not be further reduced. Extracorporeal membrane oxygenation could be an option to protect the lung but, it was unavailable in this pandemic. Constantin and his colleagues have reported that recruitment maneuver would induce more overdistension in focal ARDS than in non-focal ARDS (11). It seems that although patients with COVID-19 developed to non-focal ARDS at a later stage, the impact of high pressure on lung tissues was similar to focal ARDS. Extreme caution should be given when conducting recruitment maneuver and applying high PEEP. A recent retrospective study showed that the average PEEP used for COVID-19 patients under invasive mechanical ventilation was 14 cmH₂O in the Lombardy region of Italy (12). Considering the PaO₂/FiO₂ ratio [median (interquartile range): 160 mmHg

(114–220 mmHg)] in the Italian cohort was much higher than our subjects, the applied PEEP might be too high in some of the patients. The worsening of blood gases may have a certain time delay after overdistension. A bedside tool such as electrical impedance tomography (13) could be considered to monitor the process closely.

In a recent letter to the editor, Gattinoni et al. have reported that prone positioning improved oxygenation in the COVID-19 patients they treated (14). They suspected that the improvement was mainly due to the redistribution of perfusion, which might not be the reason for our patient cohort, since C_{stat} of our subjects were much lower than theirs (17.5 ± 3.5 vs. 50.2 ± 14.3 ml/cmH₂O). The improvement of the parameters we monitored (PaO₂, PaCO₂, and C_{stat}) suggested that recruitment occurred in the prone position in our patients. Pan et al. found that the recruitability might be improved after the prone position, which was only demonstrated in 31% (13 out of 42) of their measurement events (10). Due to the nature of retrospective analysis, we could not distinguish the effect of individually titrated PEEP and prone positioning. An individualized moderate PEEP level could be helpful to recruit collapsed lung alveoli. Previous studies have proven that titrated PEEP could be more lung protective compared to a fixed PEEP (15). Besides, different PEEP titration methods may result in various PEEPs and lead to different outcomes (16). Nevertheless, our findings clearly supported the use of individualized PEEP and prone position in COVID-19-associated severe ARDS.

Our study has several limitations. The recruitability and the effect of PEEP and prone positioning were only routinely assessed once at the beginning of ICU admission to develop ventilation strategy. A prospective study should be performed to examine if the recruitability and the effect of PEEP and prone positioning would change over time at different disease stages. The number of study subjects was limited, and the study design was a single center retrospective. It would be interesting to know whether the severity would affect the patients' outcomes and recruitabilities. But with a limited number of subjects, it was impossible to divide the subjects into subgroups for further analysis. Nevertheless, with the shared experience, we hope that a corresponding lung-protective ventilation strategy could be developed for COVID-19-associated severe ARDS.

CONCLUSIONS

Lung recruitability was very low in COVID-19-associated severe ARDS. Clinically used PEEP for classical ARDS could have induced overdistension. Individually titrated PEEP and prone positioning might improve lung mechanics and blood gasses.

DATA AVAILABILITY STATEMENT

The raw data supporting the conclusions of this article will be made available by the authors, without undue reservation.

ETHICS STATEMENT

The studies involving human participants were reviewed and approved by research ethics board of Wuhan Jinyintan Hospital. Written informed consent for participation was not required for this study in accordance with the national legislation and the institutional requirements.

AUTHOR CONTRIBUTIONS

LS, XZ, XL, YL, and DZ contributed to the design of the conception and design of the study. LS, XZ, ZZ, MZ, and LJ were responsible for patient screening and enrollment. YH performed the statistical analysis. LS, XZ, YH, XL, YL, and DZ analyzed the data and wrote the manuscript. All authors contributed to

interpretation of the data. All authors read and approved the final manuscript.

FUNDING

This study was funded by the National Science and Technology Major Project (Nos. 2017ZX10204401 and 2020ZX09201001), the Special Project for Emergency of the Ministry of Science and Technology (2020YFC0845100 and 2020YFC0841300), the Special Project of Guangdong Science and Technology Department (2020B111105001), the Science and Technology Program of Guangzhou, China (202008040003), and Natural Science Foundation of Guangdong Province, China (2020A1515011459).

REFERENCES

- Guo YR, Cao QD, Hong ZS, Tan YY, Chen SD, Jin HJ, et al. The origin, transmission and clinical therapies on coronavirus disease 2019 (COVID-19) outbreak - an update on the status. *Mil Med Res.* (2020) 7:11. doi: 10.1186/s40779-020-00240-0
- WHO. *Coronavirus Disease (COVID-2019) Situation Report - 70.* (2020). Available online at: https://www.who.int/docs/default-source/coronaviruse/situation-reports/20200330-sitrep-70-covid-19.pdf?sfvrsn=7e0fe3f8_2 (accessed March 31, 2020).
- Guan WJ, Liang WH, Zhao Y, Liang HR, Chen ZS, Li YM, et al. Comorbidity and its impact on 1590 patients with Covid-19 in China: a nationwide analysis. *Eur Resp J.* (2020) 55:2000547. doi: 10.1183/13993003.01227-2020
- Papazian L, Aubron C, Brochard L, Chiche JD, Combes A, Dreyfuss D, et al. Formal guidelines: management of acute respiratory distress syndrome. *Ann Intens Care.* (2019) 9:69. doi: 10.1186/s13613-019-0540-9
- Han X, Cao Y, Jiang N, Chen Y, Alwalid O, Zhang X, et al. Novel Coronavirus Pneumonia (COVID-19) progression course in 17 discharged patients: comparison of clinical and thin-section CT features during recovery. *Clin Infect Dis.* (2020) 71:723–31. doi: 10.1093/cid/ciaa271
- Shi H, Han X, Jiang N, Cao Y, Alwalid O, Gu J, et al. Radiological findings from 81 patients with COVID-19 pneumonia in Wuhan, China: a descriptive study. *Lancet Infect Dis.* (2020) 20:425–34. doi: 10.1016/S1473-3099(20)30086-4
- Constantin JM, Jabaudon M, Lefrant JY, Jaber S, Quenot JP, Langeron O, et al. Personalised mechanical ventilation tailored to lung morphology versus low positive end-expiratory pressure for patients with acute respiratory distress syndrome in France (the LIVE study): a multicentre, single-blind, randomised controlled trial. *Lancet Respir Med.* (2019) 7:870–80. doi: 10.1016/S2213-2600(19)30138-9
- ARDS Definition Task Force, Ranieri VM, Rubenfeld GD, Thompson BT, Ferguson ND, Caldwell E, et al. Acute respiratory distress syndrome: the Berlin Definition. *Jama.* (2012) 307:2526–33. doi: 10.1001/jama.2012.5669
- Gattinoni L, Caironi P, Cressoni M, Chiumello D, Ranieri VM, Quintel M, et al. Lung recruitment in patients with the acute respiratory distress syndrome. *N Engl J Med.* (2006) 354:1775–86. doi: 10.1056/NEJMoa052052
- Pan C, Chen L, Lu C, Zhang W, Xia JA, Sklar MC, et al. Lung recruitability in SARS-CoV-2 associated acute respiratory distress syndrome: a single-center, observational study. *Am J Respir Crit Care Med.* (2020) 201:1294–7. doi: 10.1164/rccm.202003-0527LE
- Constantin JM, Grasso S, Chanques G, Aufort S, Futier E, Sebbane M, et al. Lung morphology predicts response to recruitment maneuver in patients with acute respiratory distress syndrome. *Crit Care Med.* (2010) 38:1108–17. doi: 10.1097/CCM.0b013e3181d451ec
- Grasselli G, Zangrillo A, Zanella A, Antonelli M, Cabrini L, Castelli A, et al. Baseline characteristics and outcomes of 1591 patients infected with SARS-CoV-2 admitted to ICUs of the Lombardy Region, Italy. *JAMA.* (2020) 323:1574–1581. doi: 10.1001/jama.2020.5394
- Frerichs I, Amato MB, van Kaam AH, Tingay DG, Zhao Z, Grychtol B, et al. Chest electrical impedance tomography examination, data analysis, terminology, clinical use and recommendations: consensus statement of the TRANslational EIT developmeNt stuDY group. *Thorax.* (2017) 72:83–93. doi: 10.1136/thoraxjnl-2016-208357
- Gattinoni L, Coppola S, Cressoni M, Busana M, Rossi S, Chiumello D. Covid-19 does not lead to a “Typical” acute respiratory distress syndrome. *Am J Respir Crit Care Med.* (2020) 201:1299–300. doi: 10.1164/rccm.202003-0817LE
- Hess DR. Recruitment Maneuvers and PEEP titration. *Resp Care.* (2015) 60:1688–704. doi: 10.4187/respcare.04409
- Zhao Z, Chang MY, Gow CH, Zhang JH, Hsu YL, Frerichs I, et al. Positive end-expiratory pressure titration with electrical impedance tomography and pressure-volume curve in severe acute respiratory distress syndrome. *Ann Intens Care.* (2019) 9:7. doi: 10.1186/s13613-019-0484-0

Conflict of Interest: The authors declare that the research was conducted in the absence of any commercial or financial relationships that could be construed as a potential conflict of interest.

Copyright © 2021 Sang, Zheng, Zhao, Zhong, Jiang, Huang, Liu, Li and Zhang. This is an open-access article distributed under the terms of the Creative Commons Attribution License (CC BY). The use, distribution or reproduction in other forums is permitted, provided the original author(s) and the copyright owner(s) are credited and that the original publication in this journal is cited, in accordance with accepted academic practice. No use, distribution or reproduction is permitted which does not comply with these terms.