



Short-Term Outcomes of Patients With COVID-19 Undergoing Invasive Mechanical Ventilation: A Retrospective Observational Study From Wuhan, China

Shuai Zhao^{1†}, Yun Lin^{1†}, Cheng Zhou², Li Wang¹, Xueyin Chen¹, Sean P. Clifford³, Ozan Akca³, Jiapeng Huang³ and Xiangdong Chen^{1*†}

¹ Department of Anesthesiology, Tongji Medical College, Union Hospital, Huazhong University of Science and Technology, Wuhan, China, ² Laboratory of Anesthesia and Critical Care Medicine, Department of Anesthesiology, Translational Neuroscience Center, West China Hospital of Sichuan University, Chengdu, China, ³ Department of Anesthesiology and Perioperative Medicine, University of Louisville, Louisville, KY, United States

OPEN ACCESS

Edited by:

F. Javier Belda,
University of Valencia, Spain

Reviewed by:

Vesna D. Dinic,
Clinical Center Niš, Serbia
Ivana Budic,
University of Niš, Serbia

*Correspondence:

Xiangdong Chen
xdchen@hust.edu.cn

[†]These authors have contributed
equally to this work

‡ORCID:

Xiangdong Chen
orcid.org/0000-0003-3347-2947

Specialty section:

This article was submitted to
Intensive Care Medicine and
Anesthesiology,
a section of the journal
Frontiers in Medicine

Received: 11 June 2020

Accepted: 04 September 2020

Published: 29 September 2020

Citation:

Zhao S, Lin Y, Zhou C, Wang L,
Chen X, Clifford SP, Akca O, Huang J
and Chen X (2020) Short-Term
Outcomes of Patients With COVID-19
Undergoing Invasive Mechanical
Ventilation: A Retrospective
Observational Study From Wuhan,
China. *Front. Med.* 7:571542.
doi: 10.3389/fmed.2020.571542

Background: COVID-19 has spread rapidly worldwide. Many patients require mechanical ventilation. The goal of this study was to investigate the clinical course and outcomes of patients with COVID-19 undergoing mechanical ventilation and identify factors associated with death.

Methods: Eighty-three consecutive critically ill patients with confirmed COVID-19 undergoing invasive mechanical ventilation were included in this retrospective, single-center, observational study from January 31 to March 15, 2020. Demographic, clinical, laboratory, radiological, and mechanical ventilation data were collected and analyzed. The primary outcome was 28-day mortality after endotracheal intubation. The secondary outcomes included the incidences of SARS-CoV-2-related cardiac, liver, and kidney injury.

Results: Seventy-four out of 83 (89.2%) patients achieved oxygen saturation above 93% after intubation. Forty-nine out of 83 (59%) patients died and 34 (41%) patients survived after 28 days of observation. Multivariable regression showed increasing odds of death associated with cardiac injury (odds ratio 15.60, 95% CI 4.20–74.43), liver injury (5.40, 1.46–23.56), and kidney injury (8.39, 1.63–61.41), and decreasing odds of death associated with the higher PaO₂/FiO₂ ratio before intubation (0.97, 0.95–0.99). PaO₂/FiO₂ ratio before intubation demonstrated a positive linear correlation with platelet count ($r = 0.424$, $P = 0.001$), and negative linear correlation with troponin I ($r = -0.395$, $P = 0.008$).

Conclusions: Cardiac, liver, and kidney injury may be associated with death for critically ill patients with COVID-19 undergoing invasive mechanical ventilation. The severity of pre-intubation hypoxia may be associated with a poorer outcome of patients with COVID-19 undergoing invasive mechanical ventilation. Larger, multi-institutional, prospective studies should be conducted to confirm these preliminary results.

Keywords: COVID-19, SARS-CoV-2, invasive mechanical ventilation, critically ill patients, outcomes

INTRODUCTION

An ongoing outbreak of SARS-CoV-2 has spread rapidly worldwide (1–4). The epidemiological findings, clinical presentation, and clinical outcomes of patients with COVID-19 have been reported (2, 5–8). However, the clinical course and outcomes of patients with COVID-19 undergoing invasive mechanical ventilation is still not clear.

Confirmed COVID-19 patients with comorbidities can rapidly develop acute respiratory distress syndrome and require intensive care unit admission as well as invasive/non-invasive mechanical ventilation (6, 7, 9). The overall mortality rate exceeds nearly 60% in critically ill COVID-19 patients from the Jin Yin-tan hospital study (7). No vaccine or specific effect medicines for COVID-19 has yet been shown to be effective, so invasive mechanical ventilation via endotracheal intubation is particularly important for severe cases to slow progression and reduce mortality (6, 7, 10). As many critically ill patients require invasive mechanical ventilation, it is critical to gain a deeper understanding of the association between mechanical ventilation and its subsequent clinical outcomes. In addition, it has previously been observed that multi-organ injury, such as lung, heart, kidney, liver injury is a common condition among hospitalized patients with COVID-19, and it may associate with higher risk of in-hospital mortality (8, 11–13). However, the progression of organ injury and outcomes of critically ill patients undergoing mechanical ventilation remain poorly defined. Identifying or more promptly treating patients undergoing mechanical ventilation is crucial to decrease the mortality rate.

Therefore, in this retrospective study, we aimed to investigate the clinical course and outcomes of patients with COVID-19 undergoing mechanical ventilation and identify factors associated with death.

MATERIALS AND METHODS

Study Design and Participants

For this single-center, retrospective, and observational study, we included 83 consecutive patients with confirmed COVID-19 undergoing invasive mechanical ventilation at the West Campus of Union Hospital from January 31 to February 15, 2020. This hospital is one of the main designated tertiary care centers for severe cases of COVID-19. We retrospectively collected and analyzed the patients with laboratory-confirmed COVID-19 according to World Health Organization (WHO) interim guidance (9). No sample size calculation was performed a priori due to the exploratory nature of this study, and thus we included all possible critically ill COVID-19 patients in our investigation.

This study was approved by the institutional ethics committee of Union Hospital, Tongji Medical College, Huazhong University of Science and Technology (No. 20200097). Written informed consent was waived by the hospital's ethics commission. This manuscript adheres to the applicable CONSORT guidelines.

Data Collection

The clinical electronic medical records, nursing records, laboratory findings, and chest x-rays of all patients were analyzed. Clinical characteristics, laboratory findings, radiological data, as well as treatment and outcomes data were collected with standardized data collection forms (modified from the standardized International Severe Acute Respiratory and Emerging Infection Consortium case report forms) (14). Data were independently verified to ensure accuracy by two investigators. The researchers also directly communicated with involved health-care providers and patient family members to minimize data loss, and ensure the accuracy and reliability of the data. We collected data including age, sex, chronic medical histories (hypertension, cardiovascular disease, chronic pulmonary disease, chronic neurological disorder, chronic kidney disease, diabetes), vital signs (heart rate, blood pressure, SpO₂, PaO₂), laboratory findings, chest CT scans, electrocardiogram (ECG), and information on oxygenation status (PaO₂/FiO₂ ratio [P/F] and SpO₂ before and after intubation). Vital signs and laboratory parameters were collected on admission into hospital (ADM-) and continuously tracked daily from pre-intubation (PRE-) until 7 days after intubation (POST-1 to POST-7). The partial pressure of arterial oxygen (PaO₂) was measured by arterial blood gas analysis. The P/F was calculated using the formula PaO₂/FiO₂ (mmHg).

Procedures of Intubation and Mechanical Ventilation

Endotracheal intubation was performed by experienced anesthesiologists using airborne precautions according to the interim guidance recommended by the World Health Organization (WHO): patients receiving high-flow nasal oxygen should be in a monitored setting and cared for by experienced personnel capable of endotracheal intubation in case the patient acutely deteriorates or does not improve after a short trial (about 1 h) (9). All study patients were intubated orally using a video laryngoscope. Vital signs including the patient's SpO₂, blood pressure, heart rate, and breathing status were closely observed and recorded after intubation. A protective ventilation strategy with small tidal volumes (e.g., 4–6 ml.kg⁻¹ ideal body weight), low inspiratory pressures (P_{plat} < 30 cmH₂O) and optimal PEEP [by ARDSNet (15)] was used to reduce ventilator-induced lung injury. Unfortunately, the exact data on mechanical ventilation were not recorded and the compliance rate with the protective mechanical ventilation were not known.

Outcome Measures

The primary outcome was 28-day mortality after endotracheal intubation with the final date of follow-up being March 15, 2020. Secondary outcomes included the incidences of SARS-CoV-2-related cardiac, liver, and kidney injury. Cardiac injury was defined as the serum levels of troponin I (TnI) above the upper limit of the reference range (>26 ng.L⁻¹) or new ST segmental and T-wave changes or pathologic Q-waves found on ECG (16). Liver injury was diagnosed if the serum levels of aspartate transaminase (AST), alanine transaminase (ALT), and AST/ALT were above the upper limit of the reference range (ALT

TABLE 1 | Baseline characteristics, laboratory results, chest CT findings, and clinical outcomes of survivors and non-survivors with COVID-19.

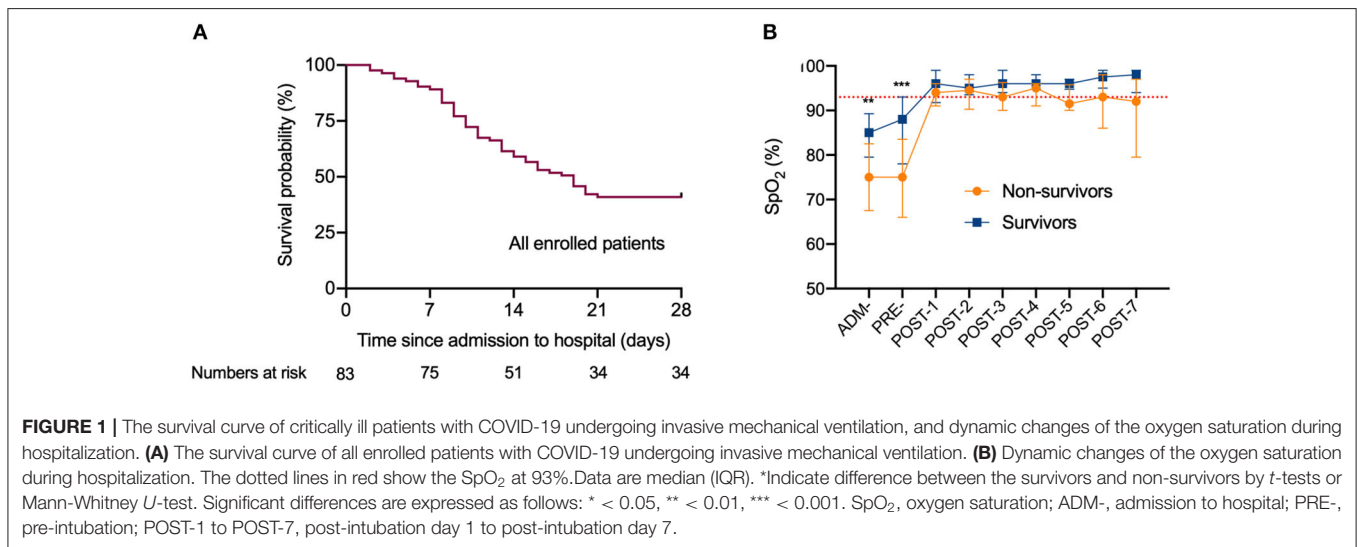
	Total patients (N = 83)	Survivors (N = 34)	Non-survivors (N = 49)	P-value
Baseline characteristics				
Age, years				
Mean (SD)	64 (11.0)	61 (10.6)	66 (10.9)	0.039
Median (IQR)	65 (60–71)	62 (55–68.8)	68 (63–71)	
Sex, No. (%)				
Female	25 (30.1)	9 (26.5)	16 (32.7)	0.546
Male	58 (69.9)	25 (73.5)	33 (67.3)	
Chronic medical illness, No. (%)				
Hypertension	42 (50.6)	12 (35.3)	30 (61.2)	0.020
Cardiovascular disease	13 (15.7)	4 (11.8)	9 (18.4)	0.416
Chronic pulmonary disease	7 (8.4)	1 (2.9)	6 (12.2)	0.231
Chronic neurological disorder	3 (3.6)	1 (2.9)	2 (4.1)	>0.999
Chronic liver disease	5 (6.0)	1 (2.9)	4 (8.2)	0.644
Chronic kidney disease	4 (4.8)	2 (5.9)	2 (4.1)	0.706
Diabetes	30 (36.1)	10 (29.4)	20 (40.8)	0.288
Vital signs at pre-intubation, median (IQR)				
Heart rate, bpm	99 (84.3–119.3)	92 (79.3–116.8)	100 (88.3–122.3)	0.564
Systolic pressure, mmHg	132 (120.0–153.5)	128 (116.0–147.5)	137 (123–157)	0.684
Diastolic pressure, mmHg	80 (67.0–91.5)	73 (66.8–92.3)	85 (69.5–90.5)	0.979
MAP, mmHg	93 (86–115)	91 (83–102)	98 (86–113)	0.735
SpO ₂	82 (71.5–89.3)	88 (78.0–92.5)	79 (66.5–84.0)	0.001
PaO ₂ , mmHg	53.1 (45.6–59.5)	59 (52.5–64.3)	49 (42.6–55.4)	<0.001
P/F at pre-intubation	121 (103.6–135.2)	134 (119.4–146.1)	112 (96.8–125.8)	<0.001
P/F at pre-intubation, No. (%)				
P/F > 150 mmHg	10 (12.0)	7 (20.6)	3 (6.1)	0.515
100 ≤ P/F ≤ 150 mmHg	55 (66.3)	26 (76.5)	29 (59.2)	0.156
P/F < 100 mmHg	18 (21.7)	1 (2.9)	17 (34.7)	<0.001
Laboratory results at pre-intubation, median (IQR)				
Leucocytes count, × 10 ⁹ .L ⁻¹	12.46 (9.15–16.65)	12.38 (8.68–15.36)	12.53 (9.50–17.22)	0.982
Lymphocyte count, × 10 ⁹ .L ⁻¹	0.54 (0.42–0.71)	0.67 (0.45–0.83)	0.49 (0.35–0.60)	0.107
Neutrophil count, × 10 ⁹ .L ⁻¹	9.73 (7.82–16.57)	9.60 (7.28–15.04)	9.95 (8.47–17.03)	0.362
Platelet count, × 10 ⁹ .L ⁻¹	147 (98–197)	134 (90.50–185)	120 (69.75–167)	0.021
ALT, U.L ⁻¹	42 (26–68)	53 (38–93.50)	30 (20–54)	0.425
AST, U.L ⁻¹	41 (30–68)	47 (28.50–68.50)	38 (31.25–65.50)	0.926
AST/ALT	0.99 (0.65–1.31)	0.82 (0.60–1.03)	1.14 (0.83–1.450)	0.011
BUN, mmol.L ⁻¹	8.73 (5.78–11.51)	7.55 (4.92–8.97)	9.35 (6.68–12.50)	0.047
Creatinine, μmol.L ⁻¹	65.9 (54.80–88.50)	62.9 (52.30–76.93)	69.6 (56.60–89.80)	0.338
BNP, pg.ml ⁻¹	86.34 (48.35–138.08)	63.7 (45.2–89.23)	114.6 (64.28–185.50)	0.051
TnI, ng.L ⁻¹	34.78 (19.96–77.68)	24.4 (16.25–51.87)	52.65 (23.48–87.93)	0.362
CRP, mg.L ⁻¹	81.9 (54.6–131.0)	87.2 (46.5–131.0)	81.4 (61.7–130.5)	0.750
Chest CT findings, No. (%)				
Bilateral distribution of patchy shadows or ground glass opacity	83 (100)	34 (100)	49 (100)	
Duration from admission to intubation, median (IQR)				
	6 (4–11)	8 (4–12)	6 (3–10)	0.088
Complications, No. (%)				
Cardiac injury	37 (44.6)	8 (23.5)	29 (59.2)	0.001
Liver injury	36 (43.4)	8 (23.5)	28 (57.1)	0.002
Kidney injury	25 (30.1)	3 (8.8)	22 (44.9)	<0.001

(Continued)

TABLE 1 | Continued

	Total patients (N = 83)	Survivors (N = 34)	Non-survivors (N = 49)	P-value
SOFA score at post-intubation day 3, median (IQR)	5 (4–6)	4 (4–4.8)	6 (5–7)	<0.001
Clinical outcome, No. (%)				
Hospitalization with extubation	11 (13.3)	11 (32.4)	0	
Hospitalization with intubation	23 (27.7)	23 (67.6)	0	
Died	49 (59.0)	0	49 (59.0)	
Survival time, median (IQR)	19 (10–28)	28 (28–28)	11 (8–16)	<0.001

Data are mean (SD), median (IQR) and No. (%). P-values indicate differences between survivors and non-survivors. P < 0.05 was considered statistically significant. IQR, interquartile range; P/F, PaO₂/FIO₂ ratio; MAP, mean arterial pressure; SpO₂, oxygen saturation; PaO₂, partial pressure of oxygen; ALT, alanine transaminase; AST, aspartate transaminase; BUN, blood urea nitrogen; BNP, brain natriuretic peptide; Tnl, troponin I; CRP, C reactive protein; SOFA, Sequential Organ Failure Assessment.



> 40 U/L; AST > 40 U/L; AST/ALT > 1) (17). Kidney injury was diagnosed if the serum levels of creatinine and blood urea nitrogen (BUN) were above the upper limit of the reference range (creatinine > 133 μmol.L⁻¹; BUN > 8.2 mmol.L⁻¹) (18). All laboratory findings mentioned above were provided by the laboratory of West Campus of Union Hospital.

The Sequential Organ Failure Assessment (SOFA) was calculated on admission and every 24 h until the final date of follow-up. The worst values for each parameter in the 24-h period were used in scoring tabulation. The daily SOFA score was calculated for each patient on the basis of six organ systems: cardiovascular, respiratory, renal, hepatic, coagulation, and neurologic systems (scores for each system range from 0 to 4, with higher scores indicating more severe organ-system dysfunction; maximum score, 24).

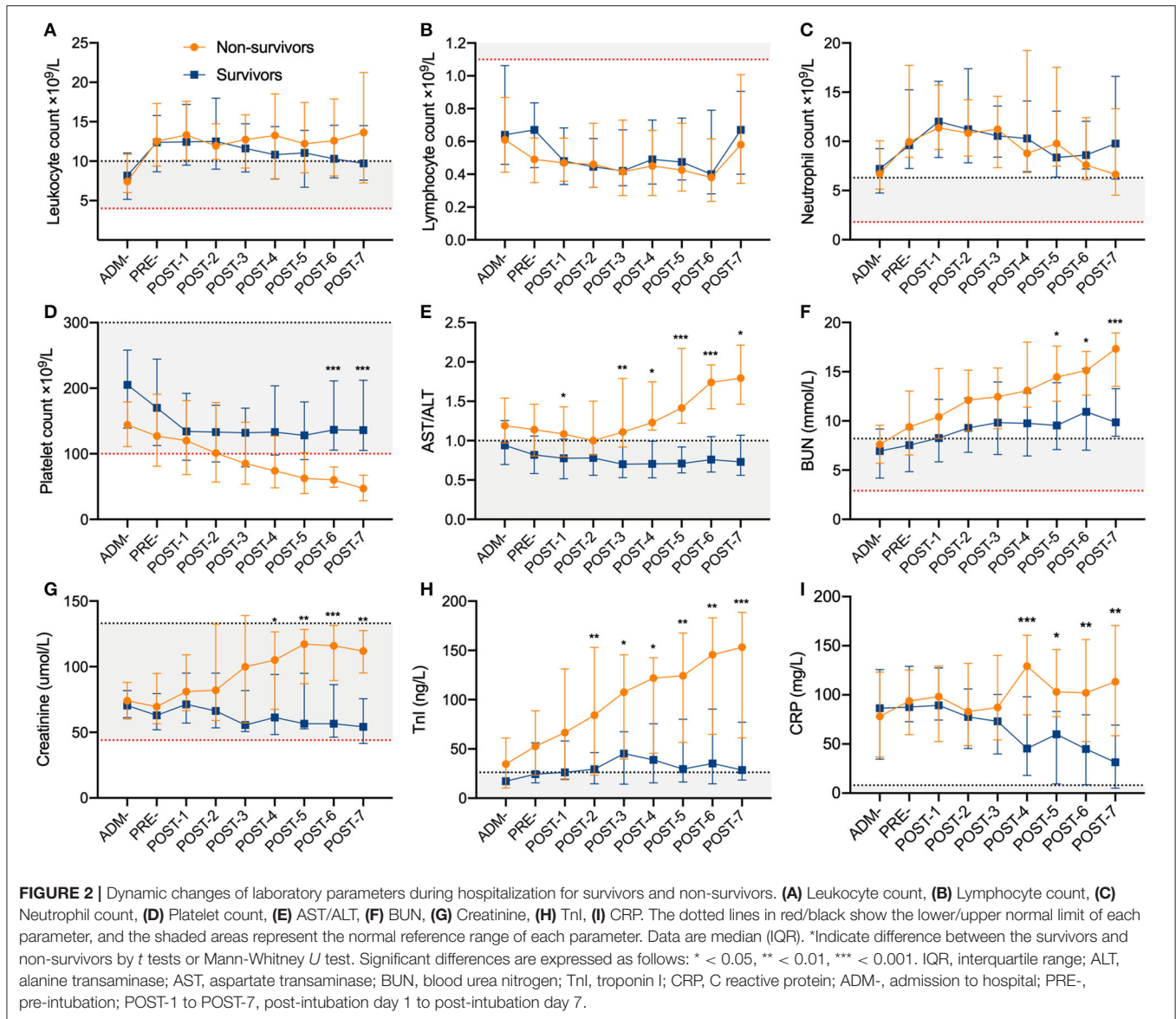
Statistical Analysis

Continuous data were presented as mean (SD) or median (IQR), and categorical data were presented as number (%). Means for continuous data were compared using independent group *t*-tests when the data were normally distributed; otherwise, the Mann-Whitney *U*-test was used. Proportions for categorical variables

were compared using the Chi-square (and Fisher’s exact) test. Survival analysis was performed using Kaplan-Meier survival curves. Univariable and multivariable logistic regression models were used to explore the risk factors associated with death for patients with COVID-19. Considering the total number of deaths (*n* = 49) in this study and to avoid overfitting in the model, five variables (age, P/F, cardiac injury, liver injury, and kidney injury) were chosen for multivariable analysis on the basis of previous findings and clinical constraints. The correlation coefficient was calculated by Pearson’s correlation analysis. A two-sided α of <0.05 was considered statistically significant. All statistical analysis was performed with GraphPad Prism version 8 (Graph-Pad Software Inc., San Diego, CA, U.S.) and SPSS software (version 25 for Mac; IBM, New York, USA).

RESULTS

We observed 83 critically ill patients with confirmed COVID-19 undergoing invasive mechanical ventilation. In the cohort of 83 consecutive patients, the median (IQR) age was 65 (60–71) years, and 58 (69.9%) patients were men (Table 1).



Sixty-four (46.4%) patients had one or more chronic medical illness including: hypertension (42 [50.6%]), cardiovascular disease (13 [15.7%]), chronic pulmonary disease (7 [8.4%]), chronic neurological disorder (3 [3.6%]), chronic liver disease (5 [6.0%]), chronic kidney disease (4 [4.8%]), and diabetes (30 [36.1%]) (Table 1). Eighty-three (100%) patients showed bilateral distribution of patchy shadows or ground glass opacity. The median (IQR) duration from admission to intubation for total patients was 6 (4–11). By March 15, 2020, 23 (27.7%) patients remained intubated in the hospital, 11 (13.3%) patients had been successfully extubated, and 49 (59.0%) patients died (Table 1). The median survival time of total patients was 19 (IQR 10–28) days (Figure 1).

We divided all patients into survivors (*n* = 34) and non-survivors (*n* = 49) (Table 1). Regarding the primary outcome, 49 (59.0%) of 83 patients died within 28 days of observation

even though 74 (89.2%) patients achieved oxygen saturation above 93% after invasive mechanical ventilation was initiated (Figure 1). Prior to intubation, the median (IQR) SpO₂ with O₂ supplement were 79 (66.5–84.0) vs. 88 (78.0–92.5), *P* = 0.001 for non-survivors vs. survivors, and the median (IQR) PaO₂/FiO₂ ratio were 112 (96.8–125.8) vs. 134 (119.4–146.1), *P* < 0.001 for non-survivors vs. survivors. Post intubation, SpO₂ were 94 (91–96) vs. 96 (93–99), *P* = 0.117. The average age of the survivors was younger than the non-survivors (61 vs. 66 years old, *P* = 0.039). No significant difference was found in the duration from admission to intubation between the survivors and non-survivors (*P* = 0.088) (Table 1). At pre-intubation, the differences in levels of leukocytes, lymphocytes, and neutrophils between survivors and non-survivors were not statistically significant, although these values were abnormal in both groups (Figure 2).

TABLE 2 | Risk factors associated with death for patients with COVID-19 undergoing invasive mechanical ventilation.

	Univariable OR (95% CI)	P-value	Multivariable OR (95% CI)	P-value
Baseline characteristics				
Age, years	1.05 (1.00–1.10)	0.049	1.03 (0.97–1.09)	0.343
Male sex (vs. female)	0.74 (0.27–1.93)	0.547		
P/F pre-intubation, mmHg				
P/F	0.97 (0.95–0.99)	0.002	0.97 (0.95–0.99)	0.006
Laboratory results at post-intubation day 3, median (IQR)				
Platelet count, $\times 10^9.L^{-1}$				
>100	0.47 (0.15–0.38)	0.175		
<100	2.13 (0.72–6.48)	0.175		
AST/ALT				
≥ 1	5.13 (1.80–15.83)	0.003		
<1	0.19 (0.06–0.56)	0.003		
BUN, mmol.L⁻¹				
≥ 8.2	2.16 (0.65–7.60)	0.215		
<8.2	0.46 (0.13–1.54)	0.215		
Creatinine, $\mu\text{mol.L}^{-1}$				
≥ 133	2.86 (0.73–14.29)	0.154		
<133	0.35 (0.70–1.37)	0.154		
BNP, pg.ml⁻¹				
≥ 100	4.00 (1.28–13.46)	0.019		
<100	0.25 (0.07–0.78)	0.019		
TnI, ng.L⁻¹				
≥ 26.2	11.00 (3.05–48.37)	<0.001		
<26.2	0.09 (0.02–0.33)	<0.001		
Complications				
Cardiac injury	8.04 (2.95–24.95)	<0.001	15.60 (4.20–74.43)	0.001
Liver injury	4.33 (1.69–12.04)	0.003	5.40 (1.46–23.56)	0.016
Kidney injury	8.42 (2.56–38.38)	0.002	8.39 (1.63–61.41)	0.019

Data are Odds Ratios (95% CI). $P < 0.05$ was considered statistically significant. P/F, PaO₂/FIO₂ ratio; ALT, alanine transaminase; AST, aspartate transaminase; BUN, blood urea nitrogen; BNP, brain natriuretic peptide; TnI, troponin I.

Compared with survivors, non-survivors developed higher incidences of SARS-CoV-2-related cardiac (29 [59.2%] vs. 8 [23.5%]; $P = 0.001$), liver (28 [57.1%] vs. 8 [23.5%]; $P = 0.002$), and kidney injury (22 [44.9%] vs. 3 [8.8%]; $P < 0.001$) (Table 1). It is worth noting that non-survivors showed lower blood pressure, higher level of CRP (C reactive protein), and progressive thrombocytopenia, cardiac injury, liver injury and kidney injury from about the 3rd day post intubation (Figure 2). Non-survivors showed a higher SOFA score (6 [IQR 5–7] vs. 4 [4–4.8]; $P < 0.001$) at post-intubation day 3 (Table 1).

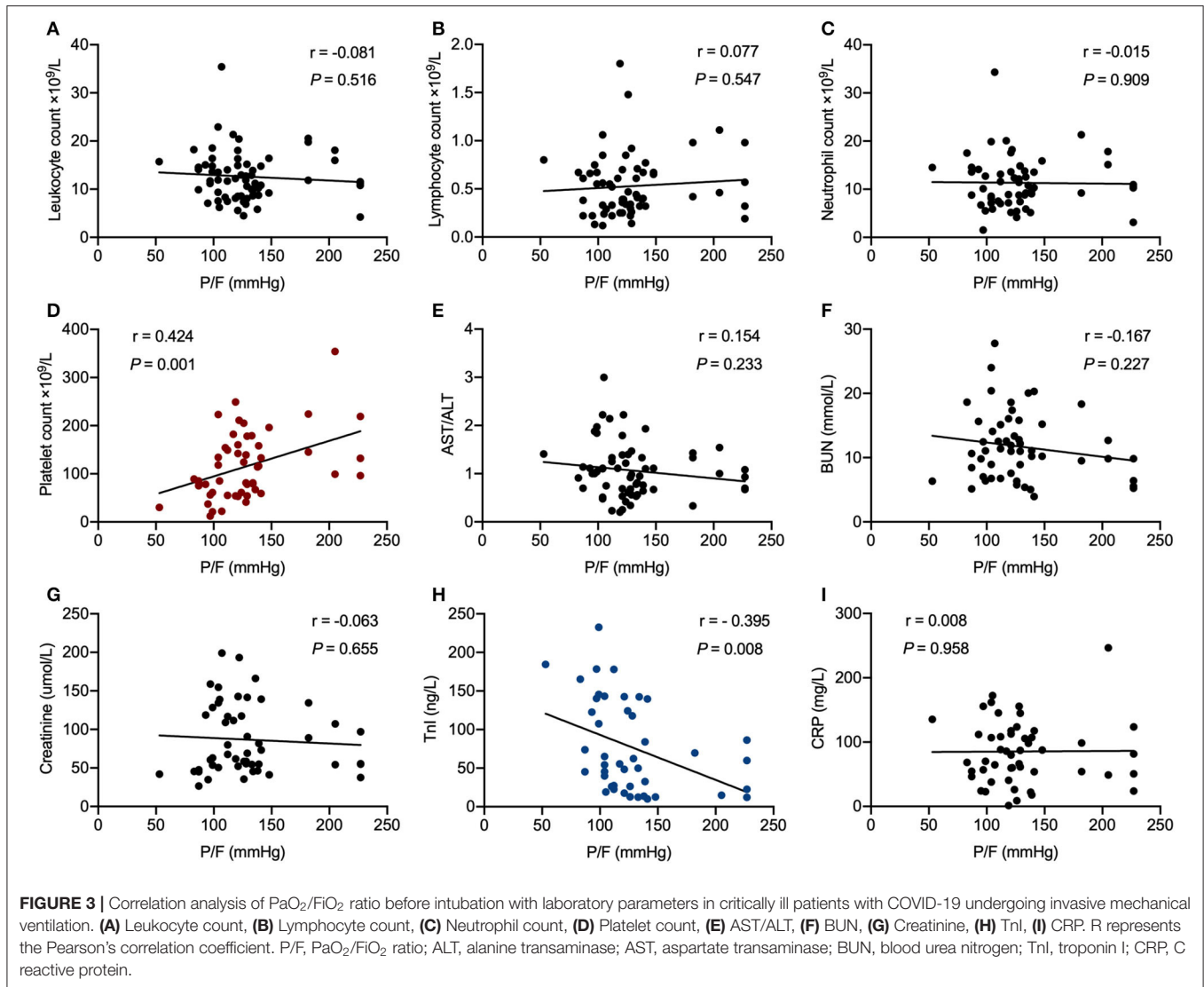
In univariable analysis, odds ratios of death (49 non-survivors vs. 34 survivors) was higher in patients with lower P/F before intubation, AST/ALT > 1 , BNP ≥ 100 pg/ml and TnI ≥ 26.2 ng/L. Cardiac, liver, and kidney injury were also associated with death for critically ill patients with COVID-19 undergoing invasive mechanical ventilation (Table 2). When including five variables in the multivariable logistic regression model, we found that P/F pre-intubation, cardiac, liver, and kidney injury were associated with death for critically ill patients with COVID-19 undergoing invasive mechanical ventilation (Table 2).

In correlation analysis, P/F before intubation in patients with COVID-19 correlated significantly with platelet count ($r = 0.424$, $P = 0.001$) and TnI ($r = -0.395$, $P = 0.008$) (Figure 3).

DISCUSSION

In this study, we report on the clinical course and outcomes of 83 critically ill patients with confirmed COVID-19 undergoing invasive mechanical ventilation. Forty-nine out of 83 (59%) patients died and 34 (41%) patients survived after 28 days of observation. Cardiac, liver, and kidney injury may be associated with death for critically ill patients with COVID-19 undergoing invasive mechanical ventilation. The severity of pre-intubation hypoxia may be associated with a poorer outcome of patients with COVID-19 undergoing invasive mechanical ventilation.

In accordance with the findings of other investigators, our critically ill patients with COVID-19 demonstrated leukocytosis, lymphopenia, thrombocytopenia, and high neutrophil levels, as well as developed different degrees of organ injury in a



short period of time (2, 6, 7, 19, 20). Notably, non-survivors showed marked thrombocytopenia, cardiac injury, liver injury, kidney injury, and higher SOFA scores compared with survivors after intubation, even though all patients demonstrated similar SpO₂ levels after the initiation of mechanical ventilation. The incidences of cardiac injury (59.2 vs. 28.0%), liver injury (57.1 vs. 28.0%), and kidney injury (44.9 vs. 37.5%) in this investigation were higher compared to the previous study from Jin Yin-tan Hospital (7). Moreover, cardiac, liver, and kidney injury in non-survivors occurred much earlier: organ failure became prominent around the 3rd day after initiation of invasive mechanical ventilation in non-survivors compared with survivors. SOFA scores at post-intubation day 3 were higher in non-survivors than survivors as well. This may be a manifestation of an accelerated disease progression, with earlier detection and intervention in cardiac, liver, and kidney injury might be used to reduce mortality. Our results of multivariable logistic regression model

also preliminarily suggested that cardiac, liver, and kidney injury may be associated with death clinically. In particular, the rapid cardiac function deterioration of these patients may expedite death. Taken as a whole, we speculate that multi-organ injury, especially cardiac, liver, and kidney injury, may be the leading potential causes of death rather than the hypoxemia and severe acute lung injury. Even though our results cannot draw a firm association due to the characteristics of retrospective exploratory study with a relatively small sample size, it could potentially provide a clue for further investigation of the value of these predictors in clinical practice.

Multi-organ function damage, including acute lung injury, acute kidney injury, cardiac injury, and liver dysfunction has been widely reported in COVID-19 (2, 6, 7). Diffuse alveolar damage, pulmonary edema with hyaline membrane formation, and hepatocyte steatosis were reported from pathologic examinations of a patient who died from SARS-CoV-2 (21).

Previous studies have revealed that the SARS-CoV-2 uses the same cell entry receptor, angiotensin-converting enzyme 2 (ACE2), as SARS-CoV, to invade the human host and cause a primary pneumonia (22). ACE2 is widely expressed in the testis, heart, kidney, small intestine, thyroid, and adipose tissue. In the lungs, liver, colon, bladder, and adrenal gland, ACE2 showed moderate expression levels as well (23). It provides potential cues that SARS-CoV-2 may damage other tissues and organs outside the lungs, such as the heart, liver, and kidney. In addition, non-survivors in our study showed lower blood pressure and higher level of C reactive protein (CRP), these changes likely reflected hypoperfusion of organ, increased inflammation and organ injury. However, no direct evidence of the perfusion in lung, heart, and other organs was available.

In our study, the P/F ratio before intubation demonstrated a significantly positive linear correlation with platelet count, and negative linear correlation with TnI. It is notable that patients developed different outcome even though most patients achieved oxygen saturation above 93% after intubation. This may indicate that the correcting hypoxia with mechanical ventilation seems not associated with a better outcome. The early occurrence and continuous increase of TnI and decrease of PLT predict the poor outcome. Multiple organs are sensitive to hypoxic insult under ARDS, including the brain, heart, lung, and kidney (10). Therefore, we speculate that critically ill patients with poor oxygenation are more vulnerable to myocardial damage especially under the cytokine storm induced by SARS-CoV-2 invasion. It is difficult to reverse this progression even when oxygen saturation remains above 93% following initiation of invasive mechanical ventilation. In addition, fulminant myocarditis induced by SARS-CoV-2 has been reported from Jin Yin-tan Hospital and Tongji Hospital (24). Acute cardiac injury may be related to direct and/or indirect effects of the SARS-CoV-2, hypoxia, shock, severe immune injury, and medications. It might be very difficult to distinguish hypoxia triggered cardiac injury vs. innate cardiac injury from the virus. However, given that cardiac injury is characterized by a rapid progression and a severe state of illness, our findings should alert physicians to pay attention not only to the symptoms of respiratory failure but also to the cardiac injury as well.

Although the P/F ratio before intubation was included in the logistic regression analysis, the conclusions that can be drawn from the current results were limited due to the non-controlled intubation timing (P/F ratio pre-intubation), OR (0.97, range 0.95–0.99) value close to 1 and unknown compliance rate with protective mechanical ventilation strategies. Firstly, given the retrospective study design and limited medical resources at the time of study, the timing of invasive mechanical ventilation was not controlled. Secondly, the OR value [0.97 (0.95–0.99)] for the P/F ratio before intubation was very close to 1, which may imply a statistically significant but not clinically meaningful difference. Thirdly, although protective mechanical ventilation strategy was recommended for all patients, the exact data on mechanical ventilation were not recorded and the compliance rate with the protective mechanical ventilation were not known. Thus, the identified association between the P/F ratio before

intubation and mortality should be evaluated with cautions. Investigating the association between the management of invasive mechanical ventilation and clinical outcomes in COVID-19 patients is of great importance clinically (25, 26). Different criteria for initiating invasive mechanical ventilation and different management strategies of mechanical ventilation may both affect the overall outcomes of COVID-19 patients. Further study is warranted in a prospective and larger cohort to confirm.

Our study has several limitations. Firstly, no sample size calculation was performed a priori due to the exploratory nature of this study, and thus we included all possible critically ill COVID-19 patients in our institution. Secondly, this was a retrospective exploratory study with relatively small sample size. The associations observed in the retrospective observational study need further confirmation in larger cohorts and prospective studies. Thirdly, mechanical ventilation protocol was adjusted with changes of patients' situations and detailed mechanical ventilation data (tidal volume, PEEP, driving pressure, etc.) were not available.

To the best of our knowledge, this is the largest retrospective cohort study among patients with COVID-19 undergoing invasive mechanical ventilation. We found that cardiac, liver, and kidney injury may be associated with death for critically ill patients with COVID-19 undergoing invasive mechanical ventilation. The severity of pre-intubation hypoxia may be associated with a poorer outcome of patients with COVID-19 undergoing invasive mechanical ventilation. Larger, multicenter, prospective studies should be conducted to confirm these findings.

DATA AVAILABILITY STATEMENT

The raw data supporting the conclusions of this article will be made available by the authors, without undue reservation.

ETHICS STATEMENT

The studies involving human participants were reviewed and approved by Union Hospital, Tongji Medical College, Huazhong University of Science and Technology. Written informed consent for participation was not required for this study in accordance with the national legislation and the institutional requirements.

AUTHOR'S NOTE

This author takes responsibility for all aspects of the reliability and freedom from bias of the data presented and their discussed interpretation.

AUTHOR CONTRIBUTIONS

XiC: had full access to all of the data in the study, take responsibility for the integrity of the data and the accuracy of

the data analysis, concept and design, and obtained funding. SZ, YL, CZ, LW, XuC, SC, JH, and XiC: acquisition, analysis, or interpretation of data. SZ and YL: drafting of the manuscript and statistical analysis. SZ, YL, CZ, SC, OA, JH, and XiC: critical revision of the manuscript for important intellectual content. All authors: contributed to the article and approved the submitted version.

FUNDING

This work was supported by the Huazhong University of Science and Technology (HUST) COVID-19 Rapid Response Call (grant 2020kfyXGYJ090 to XiC) and the National Key Research and Development Program of China (grant 2018YFC2001802 to XiC).

REFERENCES

- December I. A novel coronavirus outbreak of global health concern. *Lancet*. (2020) 395:470–3. doi: 10.1016/S0140-6736(20)30185-9
- Huang C, Wang Y, Li X, Ren L, Zhao J, Hu Y, et al. Clinical features of patients infected with 2019 novel coronavirus in Wuhan, China. *Lancet*. (2020) 395:497–506. doi: 10.1016/S0140-6736(20)30183-5
- Holshue ML, DeBolt C, Lindquist S, Lofy KH, Wiesman J, Bruce H, et al. First case of 2019 novel coronavirus in the United States. *N Engl J Med*. (2020) 382:929–36. doi: 10.1056/NEJMoa2001191
- WHO. *Coronavirus Disease (COVID-19) Outbreak*. (2020) Available online at: <https://www.who.int/emergencies/diseases/novel-coronavirus-2019> (accessed May 18, 2020).
- Li Q, Guan X, Wu P, Wang X, Zhou L, Tong Y, et al. Early transmission dynamics in Wuhan, China, of novel coronavirus-infected pneumonia. *N Engl J Med*. (2020) 382:1199:207. doi: 10.1056/NEJMoa2001316
- Wang D, Hu B, Hu C, Zhu F, Liu X, Zhang J, et al. Clinical characteristics of 138 hospitalized patients with 2019 novel coronavirus-infected pneumonia in Wuhan, China. *JAMA - J Am Med Assoc*. (2020) 323:1061–9. doi: 10.1001/jama.2020.1585
- Yang X, Yu Y, Xu J, Shu H, Xia J, Liu H, et al. Clinical course and outcomes of critically ill patients with SARS-CoV-2 pneumonia in Wuhan, China: a single-centered, retrospective, observational study. *Lancet Respir Med*. (2020) 8:475–81. doi: 10.1016/S2213-2600(20)30079-5
- Zhou F, Yu T, Du R, Fan G, Liu Y, Liu Z, et al. Clinical course and risk factors for mortality of adult inpatients with COVID-19 in Wuhan, China: a retrospective cohort study. *Lancet*. (2020) 395:1054–62. doi: 10.1016/S0140-6736(20)30566-3
- WHO. *Clinical Management of Severe Acute Respiratory Infection When Novel Coronavirus (nCoV) Infection is Suspected*. (2020). Available online at: [https://www.who.int/publications-detail/clinical-management-of-severe-acute-respiratory-infection-when-novel-coronavirus-\(ncov\)-infection-is-suspected](https://www.who.int/publications-detail/clinical-management-of-severe-acute-respiratory-infection-when-novel-coronavirus-(ncov)-infection-is-suspected) (accessed May 18, 2020).
- Fan E, Needham DM, Stewart TE. Ventilatory management of acute lung injury and acute respiratory distress syndrome. *JAMA*. (2005) 294:2889–96. doi: 10.1001/jama.294.22.2889
- Shi S, Qin M, Shen B, Cai Y, Liu T, Yang F, et al. Association of cardiac injury with mortality in hospitalized patients with COVID-19 in Wuhan, China. *JAMA Cardiol*. (2020) 5:802–10. doi: 10.1001/jamacardio.2020.0950
- Guo T, Fan Y, Chen M, Wu X, Zhang L, He T, et al. Cardiovascular implications of fatal outcomes of patients with coronavirus disease 2019 (COVID-19). *JAMA Cardiol*. (2020) 5:1–8. doi: 10.1001/jamacardio.2020.1017
- Chen T, Wu D, Chen H, Yan W, Yang D, Chen G, et al. Clinical characteristics of 113 deceased patients with coronavirus disease 2019: retrospective study. *BMJ*. (2020) 368:m1091. doi: 10.1136/bmj.m1091
- ISARIC. The International Severe Acute Respiratory and Emerging Infection Consortium (ISARIC) (2020). Available online at: <https://isaric.tghn.org> (accessed March 7, 2020).
- De Durante G, Del Turco M, Rustichini L, Cosimini P, Giunta F, Hudson LD, et al. ARDSNet lower tidal volume ventilatory strategy may generate intrinsic positive end-expiratory pressure in patients with acute respiratory distress syndrome. *Am J Respir Crit Care Med*. (2002) 165:1271–4. doi: 10.1164/rccm.2105050
- Park KC, Gaze DC, Collinson PO, Marber MS. Cardiac troponins: from myocardial infarction to chronic disease. *Cardiovasc Res*. (2017) 113:1708–18. doi: 10.1093/cvr/cvx183
- Stravitz RT, Lee WM. Acute liver failure. *Lancet*. (2019) 394:869–81. doi: 10.1016/S0140-6736(19)31894-X
- KDIGO. *Clinical Practice Guideline for Acute Kidney Injury*. (2012) Available online at: <http://www.kidney-international.org> (accessed March 5, 2020).
- Fuk-Woo Chan J, Yuan S, Kok K-H, Kai-Wang To K, Chu H, Yang J, et al. A familial cluster of pneumonia associated with the 2019 novel coronavirus indicating person-to-person transmission: a study of a family cluster. *Lancet*. (2020) 221:1757–61. doi: 10.1093/infdis/jiaa077
- Chen N, Zhou M, Dong X, Qu J, Gong F, Han Y, et al. Epidemiological and clinical characteristics of 99 cases of 2019 novel coronavirus pneumonia in Wuhan, China : a descriptive study. *JAMA*. (2020) 395:507–13. doi: 10.1016/S0140-6736(20)30211-7
- Xu Z, Shi L, Wang Y, Zhang J, Huang L, Zhang C, et al. Case report pathological findings of COVID-19 associated with acute respiratory distress syndrome. *Lancet Respir*. (2020) 8:420–22. doi: 10.1016/S2213-2600(20)30076-X
- Zhou P, Yang X-L, Wang X-G, Hu B, Zhang L, Zhang W, et al. A pneumonia outbreak associated with a new coronavirus of probable bat origin. *Nature*. (2020) 579:270–3. doi: 10.1038/s41586-020-2012-7
- Li MY, Li L, Zhang Y, Wang XS. Expression of the SARS-CoV-2 cell receptor gene ACE2 in a wide variety of human tissues. *Infect Dis Poverty*. (2020) 9:45. doi: 10.1186/s40249-020-00662-x
- Ruan Q, Yang K, Wang W, Jiang L, Song J. Clinical predictors of mortality due to COVID-19 based on an analysis of data of 150 patients from Wuhan, China. *Intensive Care Med*. (2020) 46:846–8. doi: 10.1007/s00134-020-06028-z
- Meng L, Qiu H, Wan L, Ai Y, Xue Z, Guo Q, et al. Intubation and Ventilation amid the COVID-19 Outbreak: Wuhan's Experience. *Anesthesiology*. (2020) 132:1317–32. doi: 10.1097/ALN.0000000000003296
- Yao W, Wang T, Jiang B, Gao F, Wang L, Zheng H, et al. Emergency tracheal intubation in 202 patients with COVID-19 in Wuhan, China: lessons learnt and international expert recommendations. *Br J Anaesth*. (2020) 125:e28–37. doi: 10.1016/j.bja.2020.03.026

Conflict of Interest: The authors declare that the research was conducted in the absence of any commercial or financial relationships that could be construed as a potential conflict of interest.

Copyright © 2020 Zhao, Lin, Zhou, Wang, Chen, Clifford, Akca, Huang and Chen. This is an open-access article distributed under the terms of the Creative Commons Attribution License (CC BY). The use, distribution or reproduction in other forums is permitted, provided the original author(s) and the copyright owner(s) are credited and that the original publication in this journal is cited, in accordance with accepted academic practice. No use, distribution or reproduction is permitted which does not comply with these terms.