



OPEN ACCESS

EDITED AND REVIEWED BY
Claudio Chiastra,
Polytechnic University of Turin, Italy

*CORRESPONDENCE

Brent A. Craven
✉ brent.craven@fda.hhs.gov
Keefe B. Manning
✉ kbm10@psu.edu

RECEIVED 23 November 2024

ACCEPTED 04 December 2024

PUBLISHED 03 January 2025

CITATION

Bhardwaj S, Craven BA, Sever JE, Costanzo F,
Simon SD and Manning KB (2025)
Corrigendum: Modeling flow in an *in vitro*
anatomical cerebrovascular model with
experimental validation.
Front. Med. Technol. 6:1533412.
doi: 10.3389/fmedt.2024.1533412

COPYRIGHT

© 2025 Bhardwaj, Craven, Sever, Costanzo,
Simon and Manning. This is an open-access
article distributed under the terms of the
[Creative Commons Attribution License \(CC
BY\)](#). The use, distribution or reproduction in
other forums is permitted, provided the
original author(s) and the copyright owner(s)
are credited and that the original publication in
this journal is cited, in accordance with
accepted academic practice. No use,
distribution or reproduction is permitted
which does not comply with these terms.

Corrigendum: Modeling flow in an *in vitro* anatomical cerebrovascular model with experimental validation

Saurabh Bhardwaj¹, Brent A. Craven^{2*}, Jacob E. Sever¹,
Francesco Costanzo^{1,3}, Scott D. Simon⁴ and Keefe B. Manning^{1,5*}

¹Department of Biomedical Engineering, Pennsylvania State University, University Park, PA, United States, ²Office of Science and Engineering Laboratories, Center for Devices and Radiological Health, U.S. Food and Drug Administration, Silver Spring, MD, United States, ³Department of Engineering Science and Mechanics, Pennsylvania State University, University Park, PA, United States, ⁴Department of Neurosurgery, Penn State Hershey Medical Center, Hershey, PA, United States, ⁵Department of Surgery, Penn State Hershey Medical Center, Hershey, PA, United States

KEYWORDS

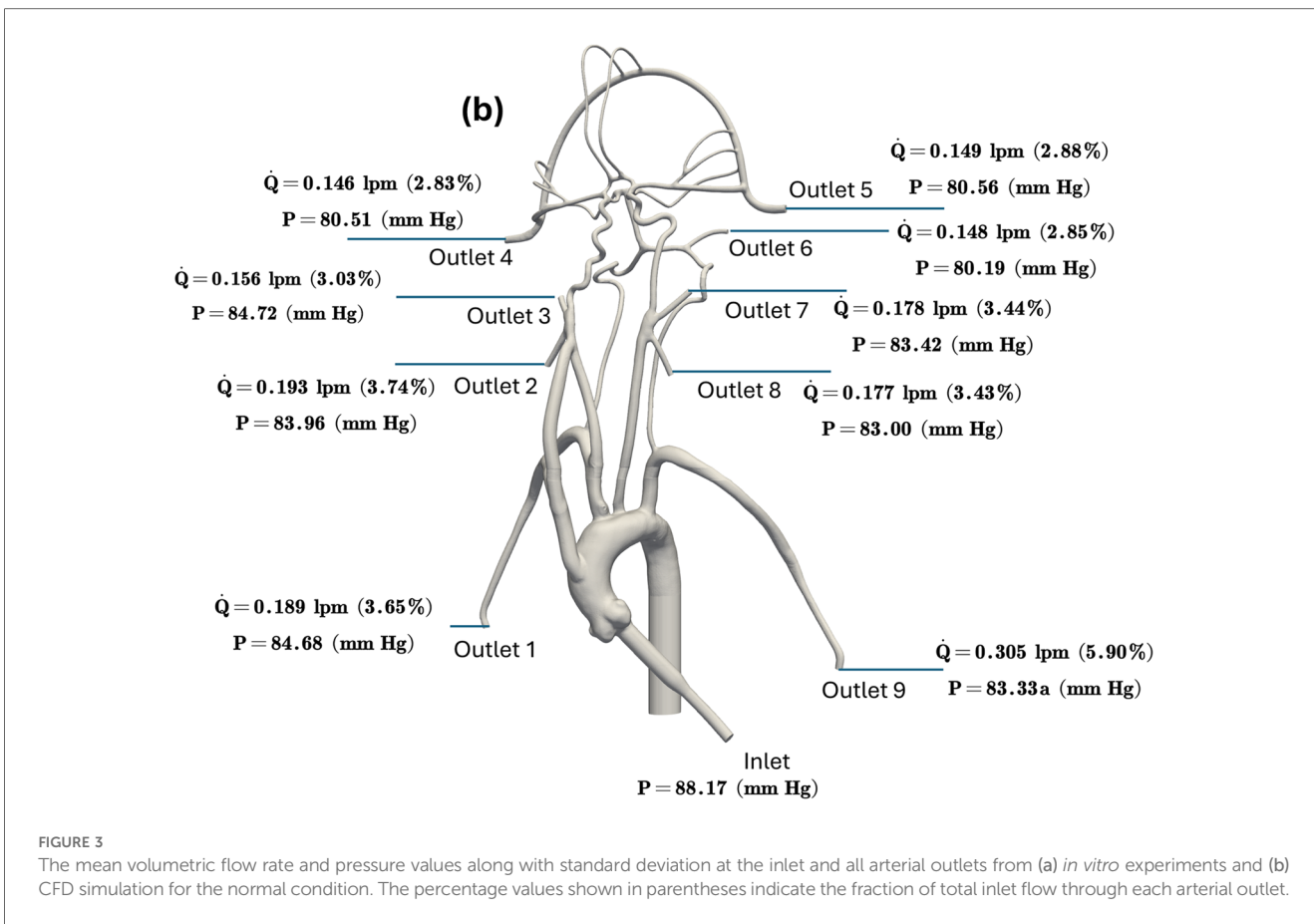
cerebrovascular model, cerebral blood flow, image based modeling, acute ischemic stroke, fluid dynamics

A Corrigendum on
[Modeling flow in an *in vitro* anatomical cerebrovascular model with
experimental validation](#)

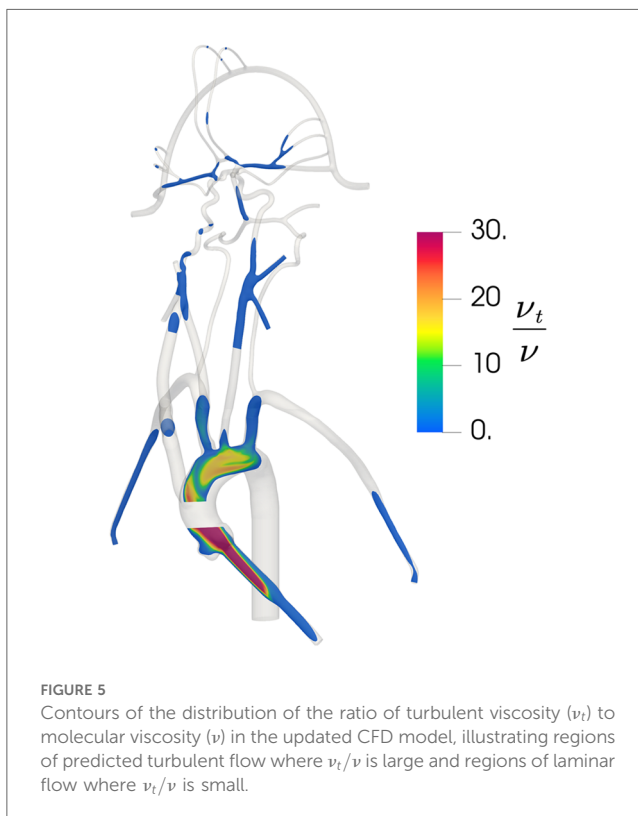
By Bhardwaj S, Craven BA, Sever JE, Costanzo F, Simon SD, Manning KB. (2023). Front. Med. Technol. 5:1130201. doi: 10.3389/fmedt.2023.1130201

Error in Figure/Table

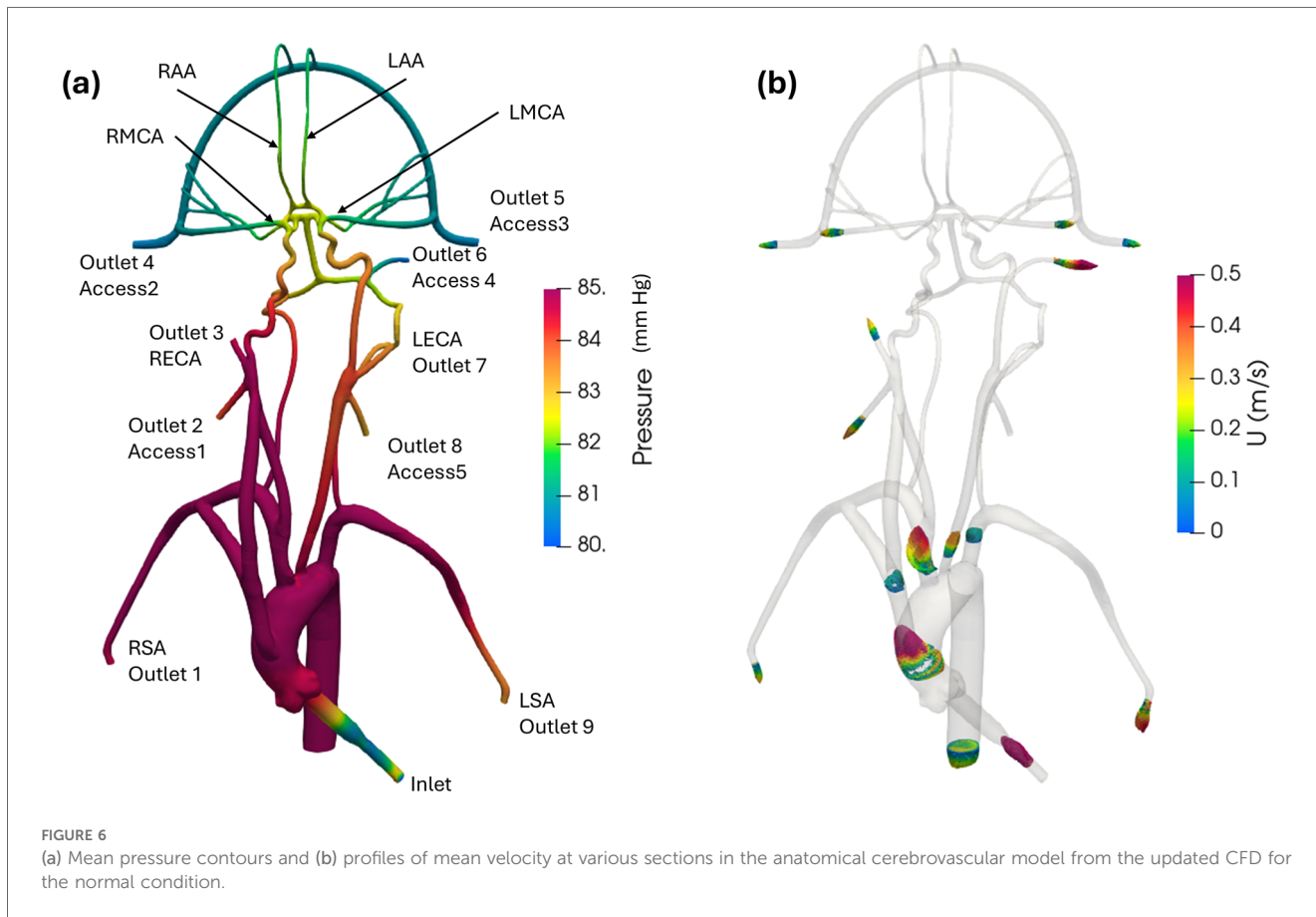
In the published article, there was an error in [Figure 3b](#) as published. The simulation was based on an incorrect scale and the values have been updated. The corrected [Figure 3b](#) and its caption appear below.



In the published article, there was an error in Figure 5 as published. The simulation was conducted using an incorrect scale and these values have been revised. The corrected Figure 5 and its caption appear below.



In the published article, there was an error in Figure 6 as published. The simulation was conducted using an incorrect scale and these values have been revised. The corrected Figure 6 and its caption appear below.



In the published article, there was an error in Table 2 as published. The simulation was conducted using an incorrect scale and these values have been revised. The corrected Table 2 and its caption appear below.

TABLE 2 Mean pressure (mmHg) obtained from *in vitro* experiments and CFD at various inlet and outlets for the normal condition. The experimental values are reported as mean ± standard deviation (SD) from three experiments.

Location	<i>In vitro</i> pressure (mm Hg)	CFD pressure (mm Hg)	% Difference
Inlet	84.91 ± 0.9	88.17	3.83
Outlet 1 (RSA)	83.84 ± 0.67	84.68	1.00
Outlet 2 (Access1)	82.56 ± 0.32	83.96	1.70
Outlet 3 (RECA)	83.93 ± 0.37	84.72	0.94
Outlet 4 (Access2)	82.11 ± 1.5	80.51	1.95
Outlet 5 (Access3)	83.43 ± 1.8	80.56	3.44
Outlet 6 (Access4)	83.51 ± 1.27	80.19	3.98
Outlet 7 (LECA)	83.90 ± 1.3	83.42	0.57
Outlet 8 (Access5)	83.83 ± 0.44	83.00	0.99
Outlet 9 (LSA)	80.31 ± 1.04	83.33	3.76

In the published article, there was an error in Table 3 as published. The simulation was conducted using an incorrect scale and these values have been revised. The corrected Table 3 and its caption appear below.

TABLE 3 Mean pressure (mmHg) obtained from *in vitro* experiments and CFD at the inlet and outlets for the stroke condition. The experimental values are reported as mean \pm standard deviation (SD) from three experiments.

Location	<i>In vitro</i> pressure (mm Hg)	CFD pressure (mm Hg)	% Difference
Inlet	84.25 \pm 0.79	85.58	1.58
Outlet 1 (RSA)	83.04 \pm 0.85	82.48	0.67
Outlet 2 (Access1)	81.01 \pm 0.72	81.75	0.92
Outlet 3 (RECA)	82.02 \pm 0.67	82.55	0.64
Outlet 4 (Access2)	–	–	–
Outlet 5 (Access3)	80.04 \pm 1.2	79.31	0.91
Outlet 6 (Access4)	78.83 \pm 1.7	78.66	0.22
Outlet 7 (LECA)	80.40 \pm 1.19	81.46	1.31
Outlet 8 (Access5)	79.55 \pm 0.96	81.02	1.85
Outlet 9 (LSA)	78.74 \pm 1.56	81.19	3.11

The authors apologize for this error and state that this does not change the scientific conclusions of the article in any way. The original article has been updated.

Acknowledgments

We would like to thank Boyang Su, Ph.D. for performing the simulations to update the results.

organizations, or those of the publisher, the editors and the reviewers. Any product that may be evaluated in this article, or claim that may be made by its manufacturer, is not guaranteed or endorsed by the publisher.

Publisher's note

All claims expressed in this article are solely those of the authors and do not necessarily represent those of their affiliated