



Computational amphiphilic materials for drug delivery

Naresh Thota and Jianwen Jiang*

Department of Chemical and Biomolecular Engineering, National University of Singapore, Singapore

Amphiphilic materials can assemble into a wide variety of morphologies and have emerged as a novel class of candidates for drug delivery. Along with a large number of experiments reported, computational studies have also been conducted in this field. At an atomistic/molecular level, computations can facilitate quantitative understanding of experimental observations and secure fundamental interpretation of underlying phenomena. This review summarizes the recent computational studies on amphiphilic copolymers and peptides for drug delivery. Atom-resolution and time-resolved insights are provided from bottom-up to microscopically elucidate the mechanisms of drug loading/release, which are indispensable in the rational screening and design of new amphiphiles for high-efficacy drug delivery.

Keywords: copolymers, peptides, morphology, loading, release, computation

OPEN ACCESS

Edited by:

Ulrich Kleinekathöfer,
Jacobs University Bremen,
Germany

Reviewed by:

Sergei Noskov,
University of Calgary, Canada
Paolo Ruggerone,
University of Cagliari, Italy

*Correspondence:

Jianwen Jiang
chejj@nus.edu.sg

Specialty section:

This article was submitted to
Computational Materials Science,
a section of the journal
Frontiers in Materials

Received: 15 July 2015

Accepted: 28 September 2015

Published: 14 October 2015

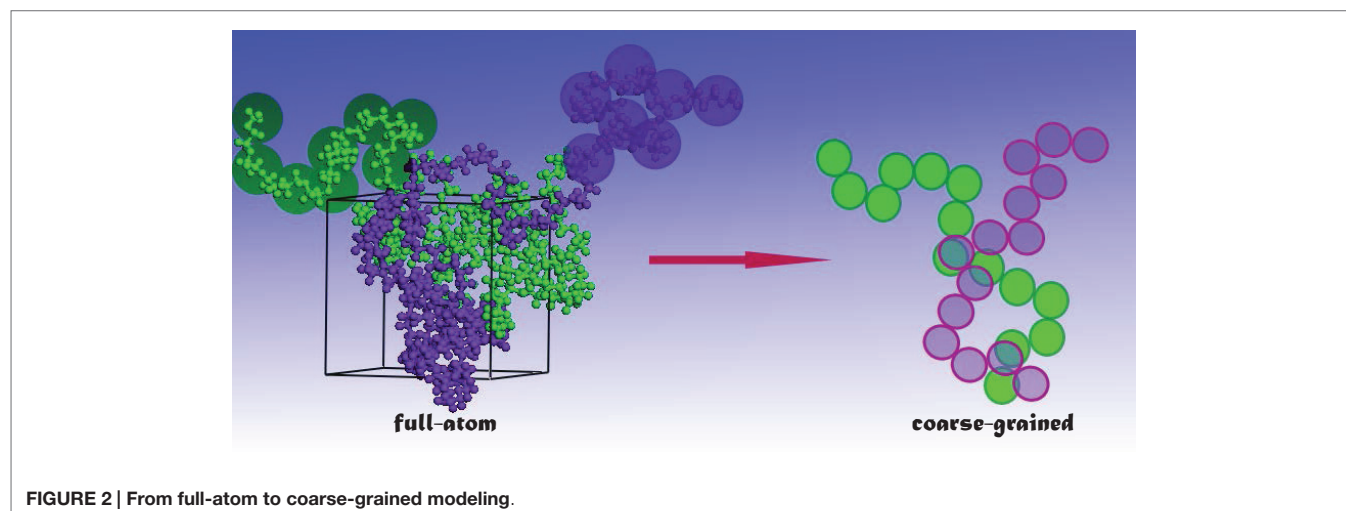
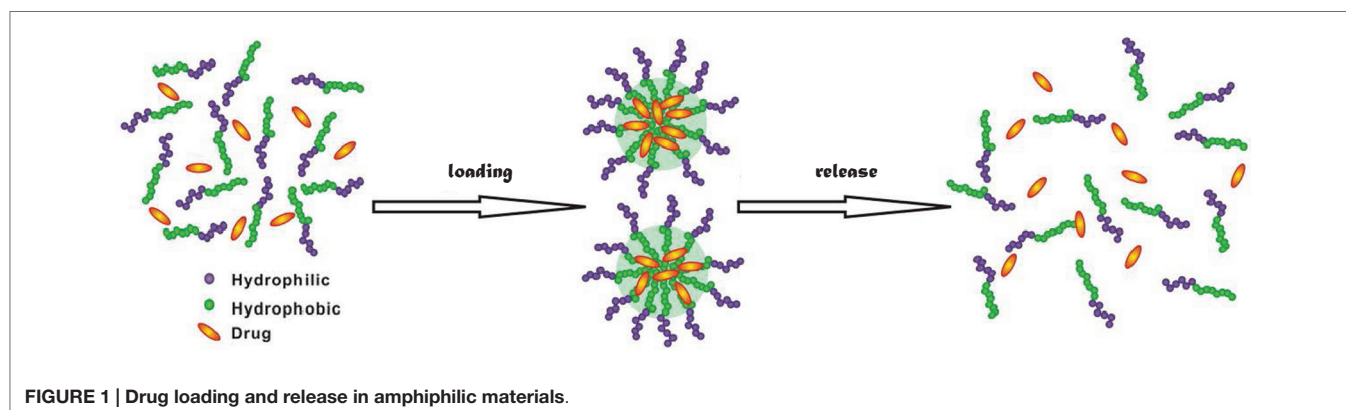
Citation:

Thota N and Jiang J (2015)
Computational amphiphilic materials
for drug delivery.
Front. Mater. 2:64.
doi: 10.3389/fmats.2015.00064

INTRODUCTION

Among the conventional methods for cancer treatment, surgery physically removes tumor in human body, chemotherapy uses medicines to destroy cancer cells, and radiation exerts high-energy beam to kill or decline the growth of cancer cells (Kumar and Kumar, 2014). Nevertheless, chemotherapy and radiation also kill healthy cells. To overcome this limitation, targeted and sustained drug delivery has been proposed (Chen and Liu, 2012). Targeted delivery can effectively inhibit the growth of cancer cells and reduce damage to healthy cells; meanwhile, sustained release offers several advantages such as less frequent administration and better compliance (Natarajan et al., 2014). In targeted and sustained delivery, drug carriers play an indispensable role. Over the last decade, there has been considerable interest in the development of new materials as drug carriers (Hubbell and Chikoti, 2012). Particularly, amphiphilic materials have emerged as a novel class of candidates for drug delivery (Shimixu et al., 2005). They have the ability to assemble into a wide variety of morphologies such as micelles, vesicles and fibers. As illustrated in **Figure 1**, drugs can be loaded in these morphologies, transported into cells, and released upon a stimulus (e.g., by altering temperature, pH, or ionic strength).

The loading, stability, and release profiles of drugs in amphiphilic materials depend largely on the morphologies assembled, which in turn are governed by material structure and functionality. Low molecular weight surfactants were initially tested for drug delivery; however, they have insufficient micellization capacity and tend to rapidly dissociate in blood (i.e., kinetically unstable) (Lawrence, 1994; Uchegbu and Vyas, 1998; Drummond and Fong, 1999). Alternatively, amphiphilic copolymers (Meng et al., 2009; Tyrrell et al., 2010; Tanner et al., 2011; Li et al., 2012) and peptides (Tian et al., 2012; Hosseinkhani et al., 2013) have been under extensive studies, primarily by experiments. Meanwhile, computational studies have also been reported to secure quantitative interpretation of experimental results and provide microscopic insights from bottom-up (Ahmad et al., 2010; Loverde, 2014). There are enormous synthetic and natural amphiphilic materials, thus it is a formidable task to



experimentally test all materials for drug delivery. In this aspect, computations are substantially more economical and feasible to screen and identify ideal candidates. Furthermore, new materials for drug delivery can be rationally designed through computations and subsequently tested by experiments.

This review summarizes the recent representative computational studies for drug delivery in amphiphilic copolymers and peptides. First, the computational methodology commonly used in this field is briefly described. Then, the computational studies of copolymer and peptides are presented and discussed, respectively. Finally, the major concluding remarks are highlighted with a few perspectives for future studies.

METHODOLOGY

Most of the computational studies for drug delivery use molecular dynamics (MD) simulations. Following the Newton's second law, a MD simulation mimics the natural pathway of molecular motion to sample successive configurations. At a given temperature, the initial velocities of molecules are assigned by the Maxwell-Boltzmann distribution. The interactions between molecules at each time are computed, and then the equations of motion are solved numerically with an appropriate time step to update the velocities and positions for the next successive

steps (Allen and Tildesley, 1987; Frenkel and Smit, 2002). In classical MD simulations, molecular interactions are described by a force field with certain functional forms and parameters. For polymer and peptides, the widely adopted force fields are AMBER (Cornell et al., 1995), OPLS (Jorgensen et al., 1996), and CHARMM (MacKerell et al., 1998).

Drug loading and release occur in a long-time scale, usually in the order of several microseconds or longer. Currently, fully atomistic (FA) simulations are too expensive to mimic such phenomena for large systems. With this regard, coarse-grained (CG) simulations are more prevailed, in which the number of degrees of freedom is reduced (see **Figure 2**) and thus the simulations can be accelerated. In the literature, several CG models have been developed on the basis of structure (Go and Taketomi, 1978), statistical potential (Miyazawa and Jernigan, 1985), elastic network (Tama et al., 2002), etc. Particularly, Marrink and coworkers developed the MARTINI model for lipids, surfactants with a few CG bead types (Marrink et al., 2004, 2007), and further extended to biomolecules with more classifications of bead types (Monticelli et al., 2008). The MARTINI model uses four to one mapping, i.e., four heavy atoms/molecules are collectively mimicked as a single bead for linear molecules. Then, four types of interaction sites are considered namely polar (P), non-polar (N), apolar (C), and charged (Q). Within the four types, subtypes are further

divided on the basis of hydrogen-bonding capability (d: donor, a: acceptor, da: both and O: none) and degree of polarity (from 1 being lowest polarity to 5 being highest polarity). The interactions between different beads contain non-bonded and bonded terms. The non-bonded includes Lennard–Jones and electrostatic potentials, while the bonded includes stretching, bending, and torsional potentials. The potentials were parameterized in a systematic way to reproduce partitioning free energies between polar and apolar phases for a large number of compounds. The grouping in the MARTINI model reduces the number of atoms in simulations and increases the time scale by three- to fourfold compared with FA simulations. It has been demonstrated that the MARTINI model can well describe peptides, lipids, membranes, etc. Nevertheless, the MARTINI model is associated with several limitations: at a low temperature, it may cause rapid freezing and nucleation of water; the pairwise electrostatic interactions beyond 1.2 nm are not incorporated, which may affect the properties of a system with a large number of charged beads; the current model parameterization prevents examining the transition of secondary structure.

Another CG method often used in this field is dissipative particle dynamics (DPD), which is a higher level CG representation introduced by Hoogerbrugge and Koelman (1992) and Koelman and Hoogerbrugge (1993) and modified by Español and Warren (1995). In a DPD simulation, the system is represented by a set of soft particles (beads). The soft and short-ranged interactions include four terms: bond stretching between connected particles, conservative repulsive interaction for excluded volume effect, dissipative interaction for viscous drag between moving particles, and random interaction for stochastic impulse among particles. The amplitude of these interactions is dictated by the Fluctuation–Dissipation theorem. A distinguishing feature of DPD method is that momentum is conserved between dissipative particles and thus it is able to simulate hydrodynamic time and length scales much larger than those by conventional MD. However, a major limitation of DPD method is the unclear physical time and length scales that are actually simulated, and it is difficult to link DPD to microscopic dynamics. Other limitations include: the size of dissipative particles can be freely tuned and it is to a certain extent ambiguous; no unique way exists to estimate the interaction parameters and the parameters are not transferable. Despite the above limitations, both DPD and CG simulations can fairly well describe the equilibrium thermodynamic and structural properties, and have been widely used to investigate amphiphilic materials (Sevink et al., 2013; Li et al., 2014).

AMPHIPHILIC COPOLYMERS

Consisting of chemically different blocks, amphiphilic copolymers can assemble into a wide variety of morphologies (Mai and Eisenberg, 2012). In an aqueous solution, the hydrophobic blocks form a core or an inner layer, while the hydrophilic blocks constitute a shell or an outer layer. The morphologies may be affected by numerous factors such as polymer concentration, hydrophobic/hydrophilic ratio, end-group, and solvent content (Hayward and Pochan, 2010). Toward the development of stable drug carriers, Rösler et al. reviewed the approaches to modify chemical

structures or physically attach auxiliary agents onto copolymers (Rösler et al., 2001). Gaucher et al. discussed the synthesis of copolymers and the issues of micelle formation, characterization, and stability related to drug retention and targeting properties (Gaucher et al., 2005). The effects of polymeric nanostructure shape on drug delivery were comprehensively summarized by Venkataraman et al. (2011). Recent advances in the design and development of copolymers with cleavable linkers for intracellular drug delivery were highlighted by Wei et al. (2013).

While most experimental studies for drug delivery in copolymers are focused on loading efficiency and release profile, computations offer insightful microscopic details such as molecular interactions between drugs and carriers, equilibrium and dynamic properties as listed in **Table 1**. From FAMD simulations, Patel et al. evaluated the interactions and solubilities of two drugs (fenofibrate and nimodipine) in a series of micelle-forming poly(ethylene oxide)-*b*-poly(caprolactone) (PEO-*b*-PCL) with different combinations of blocks. The predicted solubilities were in good agreement with experimental data and better than the predictions by group contribution method (Patel et al., 2008). Two hydrophobic drugs namely Cucurbitacin B (CuB) and Cucurbitacin I (CuI) were further examined by them in PEO-*b*-PCL at various ratios of PCL/PEO (0.5, 1, and 2). With increasing PCL/PEO ratio, both drugs showed an increase in solubility. This was attributed to the increase in favorable polar interactions and to the formation of additional hydrogen bonds between drugs and PCL rather than to the increase in hydrophobic characteristics (Patel et al., 2009). In their subsequent study, PCL was branched and linked to PEO as PEO-*b*-3PCL and tested for various drug encapsulations. Containing multiple hydrogen bond acceptors and donors, Cucurbitacin in the branched copolymer was found to be more soluble than in the linear counterpart; but fenofibrate and nimodipine were less soluble in the branched copolymer due to the absence of hydrogen bond donors and the clustering of hydrogen bond acceptors. This study suggested that multi-hydrophobic copolymers could potentially increase drug loading for hydrophobic drugs with evenly distributed multiple hydrogen bond donors and acceptors (Patel et al., 2010).

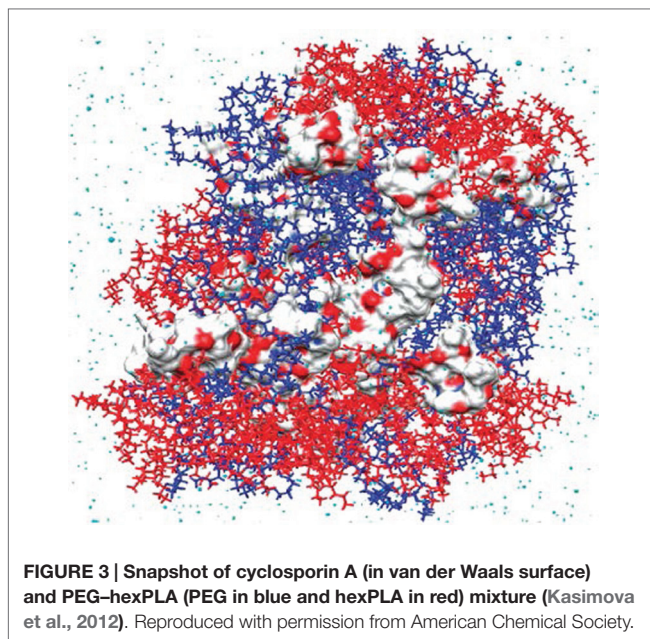
A combination of MD simulation and docking calculation was employed to predict the compatibility between three hydrophobic model drugs (curcumin, paclitaxel, and vitamin D3) and a triblock copolymer poly(ethylene oxide)-desaminotyrosyl-tyrosine octyl esters-poly(ethylene oxide) (PEG-DTO-PEG). The binding energies of drug-polymer complexes were evaluated by a rapid grid-based method. The grid size varied between $64 \times 64 \times 64 \text{ \AA}$ and $126 \times 126 \times 126 \text{ \AA}$ using grid spaces between 0.375 and 0.5 \AA . Among three algorithms namely genetic algorithm, Lamarkian genetic algorithm, and simulated annealing, the Lamarkian genetic algorithm was found to yield the strongest binding affinity. The energetically favorable conformation was attributed to strong H-bonding and π - π interactions between drug and polymer. However, vitamin D3 exhibited the highest loading even with less strong H-bonding and π - π interactions. Thus, the study revealed the significant role of subtle structural characteristics (e.g., size, flexibility, and rigidity) in drug loading and suggested the computations of drug-polymer pairs would be a powerful prescreening tool in the development and optimization

TABLE 1 | Drug delivery in amphiphilic copolymers.

Copolymer	Drug	Remark	Reference
PEO- <i>b</i> -PCL	Fenofibrate,	FAMD	Patel et al. (2008,
PEO- <i>b</i> -3PCL	nimodipine, CuB, Cul	Drug solubility	2009, 2010)
PEO	Indomethacin	FAMD	Gupta et al. (2011)
		Drug solubility	
PEG-DTO-PEG	CuR, pentoxifylline and vitamin D3	FAMD and docking	Costache et al. (2009)
		Drug affinity	
PEG-hexPLA	Cyclosporin A, Griseofulvin, ketoconazole, quercetin dehydrate	FAMD	Kasimova et al. (2012)
		Drug solubility	
PEO- <i>b</i> -PCL and PEO- <i>b</i> -3PCL	CuB	FAMD	Razavilar and Choi (2014)
		Drug diffusion	
PEO-PLLA and PEO-PDLA	Paclitaxel	DPD	Guo et al. (2009)
		Drug loading	
A _m B ₁₀ (<i>m</i> = 6–14) model polymers	Five model drugs	DPD	Guo et al. (2012b)
		Drug loading/ diffusion	
P(MMA-co-MAA)- <i>b</i> -PPEGMA	Ibuprofen	DPD and MesoDyn	Zheng et al. (2011)
		Drug loading	
PLA-PEO	Nifedipine	DPD and FAMD	Posocco et al. (2010)
PLA-PEO-PLA		Drug loading	
PEG-PCL	Taxol	CGMD	Loveverde et al. (2011)
		Drug delivery	
P(ST-DVB)	Albendazole	DPD	Rodriguez-Hidalgo et al. (2011)
		Drug release	
PAE-PEG	Camptothecin	DPD and FAMD	Luo and Jiang (2012)
		Drug loading/ release	
4AS-PCL- <i>b</i> -PDEAEMA- <i>b</i> -PPEGMA	Doxorubicin	DPD	Nie et al. (2013)
		Drug loading/ release	
AB _m C _n model polymers	Model drug	DPD	Nie et al. (2014)
		Drug release	
[(PCL) ₂ (PDEA- <i>b</i> -PPEGMA) ₂]	Doxorubicin	DPD	Lin et al. (2014)
		Drug loading/ release	
PEG _x CA _y (<i>x</i> = 2K, 3K, 5K and <i>y</i> = 4, 6, 8)	Paclitaxel	CGMD	Jiang et al. (2015)
		Drug loading	
Poly(glycerol adipate)	Dexamethasone phosphate	FAMD and CGMD	Mackenzie et al. (2015)
		Drug loading	
AB and CB model polymers	Hydrophilic model drug	CGMD	Srinivas et al. (2013)
		Drug delivery into a lipid vesicle	
PEO-PPO-PEO	Ibuprofen	CGMD	Nicola et al. (2014)
		Drug delivery into a lipid bilayer	

FAMD, fully atomistic MD; CGMD, coarse-grained MD; DPD, dissipative particle dynamics.

of new drug delivery systems (Costache et al., 2009). Based on MD simulation, Kasimova et al. proposed a method to potentially measure drug loading capability in a polymer micelle. As shown in **Figure 3**, the method was based on the simulation of a molecular system where polymer, drug, and water were tightly compacted together, thus reproducing the interior of a real micelle. Then the Flory–Huggins interaction parameters were calculated and used to estimate drug solubility. The simulation data were validated



on four drugs (cyclosporin A, griseofulvin, ketoconazole, and quercetin dehydrate) with different physical–chemical properties in PEG-hexPLA. A linear relationship was observed between the solubility and mass fraction for the four drugs. This method could be further utilized to estimate drug incorporation efficiency upon structural modification of polymer chains (Kasimova et al., 2012).

The above computational studies reported drug solubility, miscibility, and compatibility in different copolymers. While these equilibrium properties are useful to determine drug loading, dynamic information is also important. Toward this end, Razavilar et al. examined the diffusion of hydrophobic CuB in linear and branched PEO-*b*-PCL at different amounts of water. They found the diffusivity was double in linear PEO-*b*-PCL ($\sim 2.5 \times 10^{-8} \text{ cm}^2/\text{s}$) compared with that in branched PEO-*b*-3PCL ($\sim 1.3 \times 10^{-8} \text{ cm}^2/\text{s}$). The slower dynamics in branched copolymer was attributed to a cumulative effect of stronger hydrogen bonding and lower swelling. Moreover, the diffusivity was found to be insensitive to water amount (Razavilar and Choi, 2014).

DPD method has been commonly applied to simulate drug loading and delivery in amphiphilic copolymers. Guo et al. investigated paclitaxel (PTX) loading in poly(ethylene oxide)-*b*-poly(L-lactide) (PEO-PLLA) and poly(ethylene oxide)-*b*-poly(D-lactide) (PEO-PDLA). It was found that the polymer chains assembled around PTX to form core/shell structured fibers, with a PTX/PLA core and a PEO shell. The distribution of PTX could be affected by the chirality and length of PLA. For PEO-*b*-PDLA and PEO-*b*-PLLA systems, PLA and PTX were distributed homogeneously in the fiber core; however, PTX was more populated in the inner core for stereocomplex formulation. The simulation results agreed well with measured data (Guo et al., 2009). Subsequently, they simulated drug diffusion into a micelle core. When represented by a short and branched chain, drug exhibited easier diffusion. With increasing hydrophobic block length of polymer, higher loading efficiency was found. While increasing polymer concentration would also lead to higher

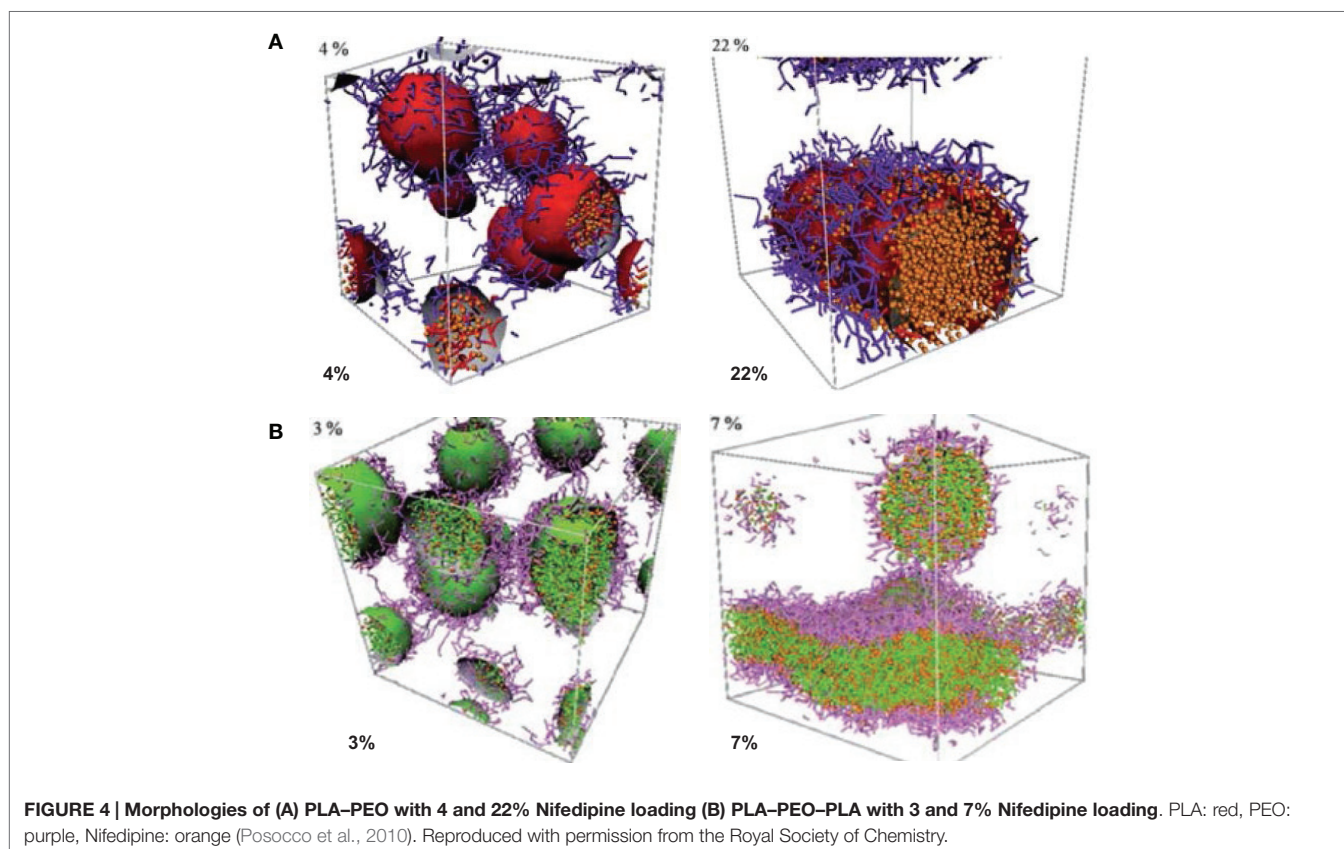
loading, different morphologies like fiber-like structures might form due to increased polymer–polymer interactions. Drug structure, hydrophobic block length and drug–polymer compatibility were identified to be the key factors governing drug loading efficiency and distribution (Guo et al., 2012b).

Posocco et al. reported a systematic DPD simulation study on structural and physical factors affecting the assembly of (D-L)-PLA/PEO di/triblock copolymers for Nifedipine loading. The morphological phase diagrams were predicted for racemic PLA and PEO copolymers with AB and ABA architectures. Scaling laws for micellar dimensions were used to derive micellar characteristics such as aggregation number and degree of hydration. As shown in **Figure 4**, the morphology of PLA–PEO was observed to be spherical at a low Nifedipine loading (4%) but switched to columnar shape at a high loading (22%). With increasing Nifedipine loading in PLA–PEO–PLA (3–7%), the morphology rearranged from sphere to bilayer. Such loading-dependent morphology transition suggested the maximum drug loading could be accommodated by the copolymers (Posocco et al., 2010).

By integrating FAMD and DPD simulations, Luo and Jiang examined the loading and release of camptothecin (CPT) in poly(β -amino ester)–methyl ether capped poly (ethylene glycol) (PAE–PEG). FAMD was utilized to estimate the Flory–Huggins interaction parameters and miscibility of binary components. On this basis, DPD was applied to examine the micellization of PAE–PEG, CPT loading and release. As illustrated in **Figure 5**, CPT loading in PAE–PEG was governed by adsorption-growth-micellization mechanism. CPT was initially adsorbed on the

small clusters assembled by polymer chains, then the clusters grew in size, and finally CPT was loaded into large-size micelles. The loading efficiency was predicted as 0.84, close to experimental measured 0.82. Upon protonation, CPT was released from micelles/vesicles by swelling-demicellization-releasing mechanism. Initially, the micelles were swollen rapidly and PAEH chains moved out from the hydrophobic core, then the swollen micelles demicellized and CPT moved out, and finally the entire micelle was dissociated into free polymer chains and CPT (Luo and Jiang, 2012).

Other copolymers were also explored for drug delivery. Nie et al. applied DPD simulation to examine doxorubicin (DOX) in a four-armed star triblock poly(ϵ -caprolactone-*b*-poly (2-(diethyl-amino) ethyl methacrylate)-*b*-poly (poly-(ethylene glycol) methyl ether methacrylate) [4AS-PCL-*b*-PDEAEMA-*b*-PPEGMA). The assembled core-mesosphere-shell micelles with three layers could load DOX at the core and the core/mesosphere interface. Upon increasing DOX content from 1 to 7%, the micelle shape changed and its shell was partially open for water to access. Due to the stretching of pH-sensitive PDEAEMA, cracks were observed in the blank micelles at pH = 5, which might facilitate drug release. However, the drug-loaded micelles did not exhibit any drug release at different pH values. This was attributed to the fact that stirring is usually applied in experiment but not incorporated in the simulation (Nie et al., 2013). They also investigated the effectiveness of drug distribution in pH-sensitive $A_1B_mC_n$ copolymers with different lengths of hydrophilic block, pH-sensitive block and hydrophobic block. From DPD simulation, it was



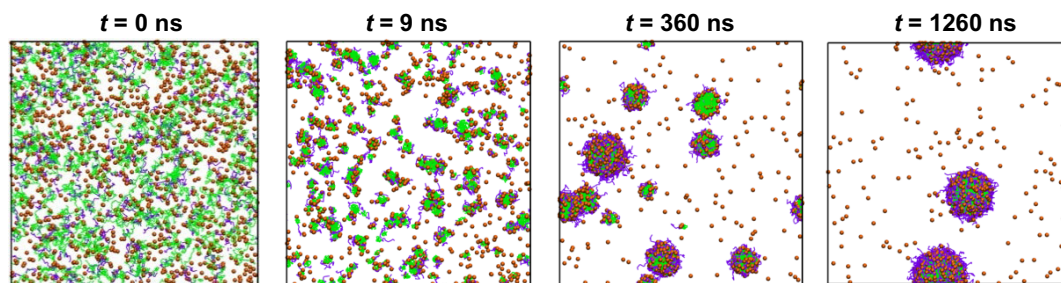


FIGURE 5 | Dynamics process of CPT loading. CPT is shown as orange sphere, PAE and PEG are in green and purple (Luo and Jiang, 2012). Reproduced with permission from Elsevier.

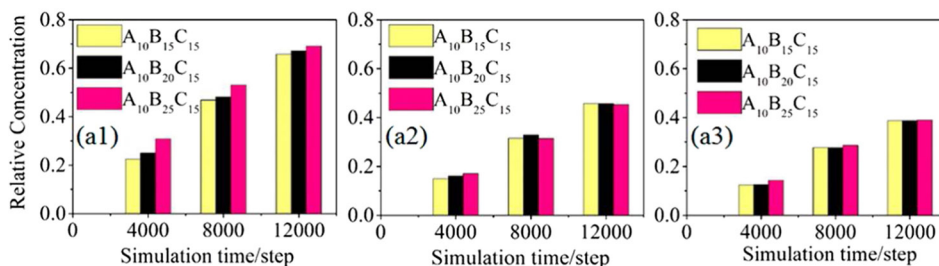


FIGURE 6 | Relative concentrations of drugs in (a1) the pH-sensitive layer, (a2) both of the pH-sensitive layer and the core, and (a3) the core.

The drugs had different compatibilities with the micelles composing different lengths of pH-sensitive B blocks (Nie et al., 2014). Reproduced with permission from American Chemical Society.

demonstrated that the formation of firework-like three layered structure (spherical core, pH-sensitive layer, and shell) was crucial to drug release. As illustrated in **Figure 6**, drug loaded in the pH-sensitive layer was easier to release with a much faster rate than in the core; drug release in the pH-sensitive layer exhibited a remarkable rise upon increasing the length of B blocks. The mechanically propelled effect due to the extension of pH-sensitive blocks had a significant contribution to drug release. Moreover, it was revealed that tuning hydrophilic chain length would promote micelle stability and increasing hydrophobic chain length resulted in different mechanisms for drug release (Nie et al., 2014). The same group further combined DPD simulation and experiment to examine DOX loading and release in 4-miktoarm star polymers namely poly(ϵ -caprolactone)₂-[poly(2-(diethylamino)ethylmethacrylate)-*b*-poly(poly(ethylene glycol) methyl ether methacrylate)]₂ [(PCL)₂(PDEA-*b*-PPEGMA)]₂ with different block ratios. The polymer formed spherical micelles with PCL core, pH-sensitive PDEA mesosphere and PPEGMA shell. The increase in hydrophobic block length showed higher DOX loading from 9 to 19%. Upon increasing concentration, DOX was initially loaded in the mesosphere then diffused into the core. A swelling-demicellization-releasing mechanism was suggested for the release process. As also observed by experiment, the amount of DOX released at pH = 5.0 was larger than at pH = 7.4 and 6.0. The study demonstrated that the miktoarm star copolymers could be promising for the controlled and sustained release of DOX (Lin et al., 2014).

A multiscale simulation in conjunction with experiment was adopted by Jiang et al. to investigate the loading and structure detail of PTX in poly(ethylene glycol)-*b*-dendritic oligo(cholic acid) (PEG_xCA_y, $x = 2K, 3K, 5K$ and $y = 4, 6, 8$). The systems were mimicked by a CG model described by the MARTINI force field. The hydrophobic-hydrophilic balance was demonstrated to be crucial for forming stable carrier and effective drug loading, and losing balance would lead to less stable micelles with limited drug loading capacity or precipitation. **Figure 7A** shows the structure of PTX-PEG^{3K}CA₈ loaded with 17% (*w/w*%) PTX at the end of 1.5 μ s simulation. PTX was encapsulated within the amphiphilic envelope of CA groups. The size distribution of PTX-loaded micelles shown in **Figure 7B** was not uniform, as also observed in dynamic light scattering measurement. The CG systems were then reversely mapped to FA representations, and hydrogen-bonds were found to form between PTX and micelles (Jiang et al., 2015).

A handful of simulation studies were targeted to elucidate the delivery of drug-loaded carriers into lipid membranes. Srinivas et al. examined the delivery of hydrophilic model drugs assisted by a patchy polymer across a lipid vesicle. The drugs were mimicked as unconnected beads and loaded in patch-forming polymer micelles composed of two types of blocks (AB and CB). In the first stage, micelle-vesicle interactions were evaluated and the full absorption of micelles was observed without the shape change of vesicle. In the second stage, the interaction between drug-loaded micelle and vesicle was evaluated, and the

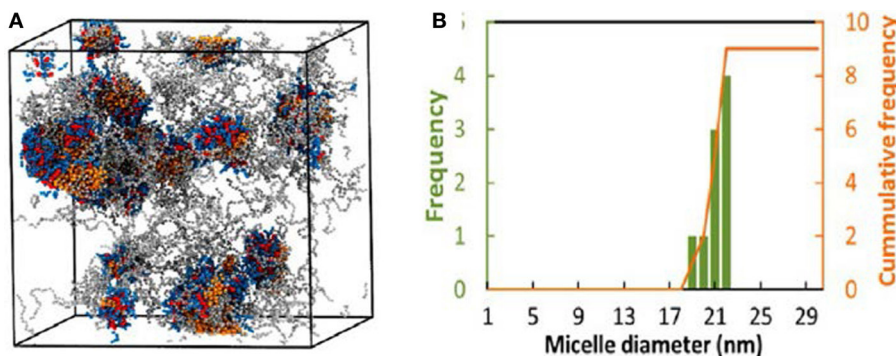


FIGURE 7 | (A) PTX-PEG^{5k}CA₈ with 17% PTX loading at 1.5 μ s. Colors: PTX (orange), PEG (gray), Cholic acid (blue) and lysine (red). **(B)** Size distribution of PTX-PEG^{5k}CA₈ (Jiang et al., 2015). Reproduced with permission from American Chemical Society.

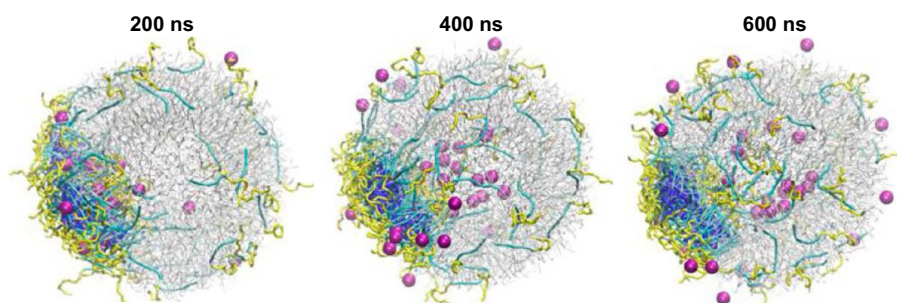


FIGURE 8 | Hydrophilic drug molecules (magenta) transport across the lipid vesicle (gray) assisted by polymer micelles (yellow and blue) and release inside the inner core of the vesicle (Srinivas et al., 2013). Reprinted with permission from American Chemical Society.

vesicle reorganized in accommodating the micelles. As shown in **Figure 8**, the drugs were successfully transported across the vesicle, released, and distributed into the vesicle. The simulation revealed that hydrophilic drugs can be delivered by polymer assisted pathway, which is insightful for experimentalists to develop better carriers for hydrophilic drugs (Srinivas et al., 2013). Alternatively, Nicola et al. performed simulation for the delivery of Pluronic micelles across DPPC lipid bilayer. In accord with experimental observation, Pluronic chains were found to release from the micelles to the bilayer and thus the micelle size was changed. In the presence of drug inside the micelle core, the release process was significantly affected due to the interplay of drug-micelle and micelle-bilayer interactions, and the micelle size increased sharply by slightly altering drug hydrophobicity. This study provides detailed understanding of fundamental mechanism underlying drug delivery (Nicola et al., 2014).

PEPTIDES

Some synthetic polymers are cytotoxic to cells and cannot be clinically used. Ideal carriers for drug delivery should possess the characteristics of non-toxic, non-immunogenic, biocompatible, biodegradable, and kinetically stable (Liu et al., 2011). In this context, amphiphilic peptides have emerged as “smart” materials for drug delivery. Composed of hydrophilic and hydrophobic

residues, amphiphilic peptides can assemble into various morphologies such as micelles, vesicles, fibers, and hydrogels (Hamley, 2011; Trent et al., 2011). The morphologies are dependent on the ratio of hydrophobic to hydrophilic residues, peptide sequence, concentration, and other factors. Their sizes are usually <100 nm, which is an advantage to prevent from reticuloendothelial system of human body (Cui et al., 2010). More intriguingly, the size, stability, permeability, and elasticity can be fine-tuned by tailoring peptide sequence, length, solution conditions, etc. Amphiphilic peptides have been tested for delivering drug or gene or both, and better therapeutic effects were found on cancer cells or genetic disorders (He et al., 2012; Sundar et al., 2014). Every year, about 17 new peptides enter into clinical tests and about 140 peptides are currently under development (Zhang et al., 2012). With 20 gene-encoded amino acids, it can be envisioned that tremendously large number of peptides would be explored (Uljin and Smith, 2008; Zhao et al., 2010).

Most computational efforts for amphiphilic peptides have been focused on self-assembly, rather than drug loading/release. Therefore, the studies of self-assembly are also summarized here as listed in **Table 2**. Jeon et al. simulated the early stages of assembly for diphenylalanine (FF) in both capped and zwitterionic forms, and compared with X-ray crystal structures. It was revealed that electrostatic interactions steered zwitterionic FF into more ordered dimers and trimers, while hydrophobic

TABLE 2 | Self-assembly and drug delivery in amphiphilic peptides.

Peptide	Nature of study	Remark	Reference
FF	Self-assembly	FAMD Nanotubes	Jeon et al. (2013)
FF and AA	Self-assembly	FAMD In water and methanol	Rissanou et al. (2013)
FF	Self-assembly	CGMD Vesicles and nanotubes, bilayers and toroids	Guo et al. (2012a)
FFF	Self-assembly	CGMD Nanospheres and nanorods	Guo et al. (2014)
Fmoc-conjugated AA	Self-assembly	FAMD Fibrils	Mu et al. (2012)
Fmoc-conjugated RGDS and GRDS	Self-assembly	FAMD Parallel and antiparallel configurations	Lopez-Perez et al. (2013)
Dipeptides	Aggregation propensity (AP)	CGMD AP scores of 400 dipeptides	Frederix et al. (2011)
Tripeptides	Aggregation propensity (AP)	CGMD AP scores of 8000 tripeptides	Frederix et al. (2015)
Tri- to hexapeptides	Self-assembly	FAMD Fiber aggregates	Hauser et al. (2011)
10- <i>b</i> -10 and 20- <i>b</i> -20	Self-assembly	FAMD and CGMD Micelles	Mondai and Yethiraj (2012)
Branched peptides	Self-assembly	CGMD Nanovesicles	Gudlur et al. (2012)
F _m K _n and F _m D _n	Self-assembly	CGMD Effect of hydrophobic/hydrophilic ratio	Thota et al. (2014)
(AEAK) ₄ , ((AE) ₂ (AK) ₂) ₂ , (AE) ₄ (AK) ₄	Self-assembly	CGMD Effect of pH	Emamyari and Fazli (2014)
(AF) ₈ H ₅ K ₁₅ and derivatives	Self-assembly	CGMD Effects of concentration, hydrophobic and hydrophilic residues	Thota et al. (2013), Thota and Jiang (2014)
Model peptides	Self-assembly	CGMD Different morphologies	Velichko et al. (2008)
C ₁₆ -SLSLAAAEIKVAV, V ₂ A ₄ E ₃ and V ₄ A ₂ E ₃	Self-assembly	FAMD and CGMD Nanofibers	Lee et al. (2011), Lee et al. (2012a), and Lee et al. (2012b)
C ₁₆ -SLSLAAAEIKVAV	Self-assembly	FAMD Free energy analysis	Yu and Schatz (2013a,b)
RADA16-I	Self-assembly	FAMD Nanofibers	Cormier et al. (2013)
Palmitoyl-V ₃ A ₃ E ₃	Self-assembly	CGMD Roles of electrostatics, temperature, hydrophobicity, and solvent	Fu et al. (2013), Fu et al. (2014), and Fu et al. (2015)
SA2	Self-assembly	CGMD and FAMD Nanovesicles	Rad-Malekshahi et al. (2015)
HR20-Chol and HR15-Chol	Doxorubicin loading	DPD and FAMD Effect of pH	Guo et al. (2010) and Guo et al. (2012c)
PPO- <i>b</i> -PBLG- <i>b</i> -PEG	Doxorubicin and naproxen loading/release	DPD In core-shell-corona micelles	Chen et al. (2014)
(AF) ₈ H ₅ K ₁₅ , F ₁₂ H ₅ K ₁₅ , F ₁₆ H ₅ K ₁₅	Ibuprofen loading/release	CGMD In different morphologies	Thota et al. (2015)

side-chain interactions played a strong role in determining the structures of large oligomers (Jeon et al., 2013). Simulation as well as experiment was performed by Rissanou et al. to study FF and AA in two solvents (water and methanol). The assembly propensity of FF in water was found to be stronger than in methanol. However, the difference between the two solvents for AA was substantially smaller. The simulation results showed good qualitative agreement with experimental observations (Rissanou et al., 2013). Alternatively, Guo et al. implemented extensive CGMD simulations to probe the assembly of FF. Consistent with previous experiments, nanovesicles and nanotubes were predicted (**Figures 9A,B**); in addition, new ordered planar bilayers and a rich variety of other vesicle-like structures including toroid, ellipsoid, discoid, and pot-shaped vesicles were also observed. The assembly was revealed to involve the fusion of small vesicles and bilayers at low concentrations but the formation of a bilayer at high concentrations (Guo et al., 2012a). They further predicted that FFF spontaneously assembled into highly compact nanospheres and nanorods (**Figures 9C,D**). The peptides in nanostructures were predominantly anti-parallel-aligned with the capability to form β -sheets, and no intermediate bilayers existed. From free energy analysis, the assembly of FF and FFF was attributed to the aromatic stacking interactions of side chains; however, the fine morphologies were governed by the interactions of main chains (Guo et al., 2014).

Fluorenylmethoxycarbonyl conjugated peptides were under investigation by a few groups. Mu et al. combined experiment and simulation to examine the assembly of Fmoc-AA. The formation of fibrils with Fmoc groups at the center was observed; nevertheless, the partial exposure of Fmoc groups to water caused the fibrils to aggregate into nanoscale fibers. The radial distribution calculations agreed well with the *d*-spacings measured by wide angle X-ray scattering for the fibril diameter and π -stacking interactions (Mu et al., 2012). Similarly, Lopez-Perez et al. found Fmoc conjugated tetrapeptides (Fmoc-RGDS and Fmoc-GRDS) retained pre-assembled β -sheet parallel conformations under low concentrations, which were dominated by the interactions among Fmoc units. The study provided a complete microscopic insight into the interactions between Fmoc-peptides comprised within the same sheet or among different sheets (Lopez-Perez et al., 2013).

Using CGMD simulations, Frederix et al. rapidly screened 400 dipeptide combinations of 20 amino acids as a potential precursor for assembly. The candidates showing strong aggregation tendencies were chosen for longer simulations, and good agreement was found by comparing predicted aggregation propensity (AP) scores and supramolecular structures with experimental results known in the literature. Extended simulations on FF showed the formation of a nanotube. This screening protocol allows rapid determination on the capability of peptide assembly (Frederix et al., 2011). Subsequently, they predicted the AP scores of 8000 tripeptides as a function of hydrophobicity. As shown in **Figure 10**, a weak correlation between AP and hydrophilicity was found. The peptides containing charged K, R, D, and E and hydrogen-bonding T and S were identified with high AP scores. Among these, the top 400 combinations were subject to extended simulations for the dynamics and nanostructure of assembly.

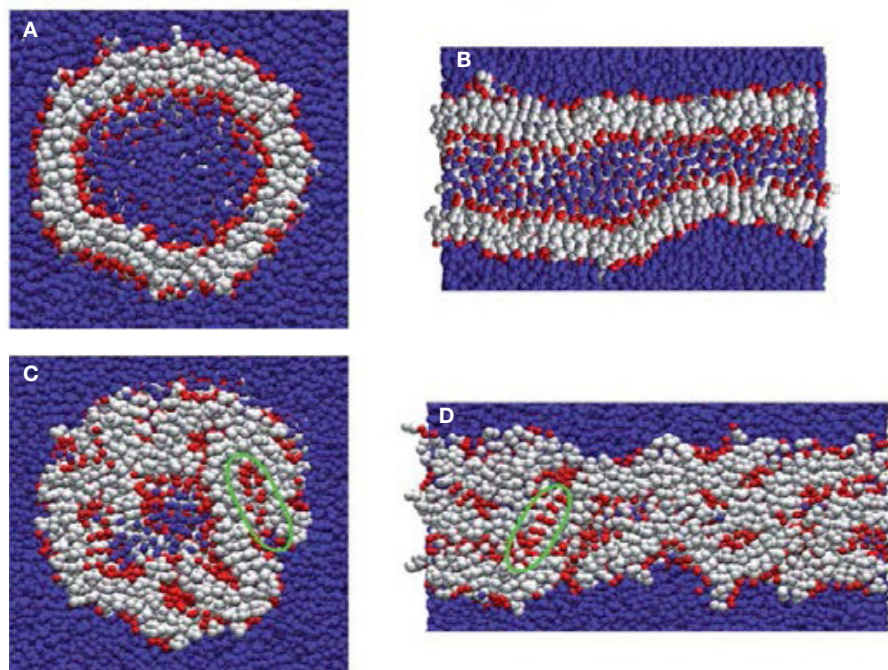


FIGURE 9 | Nanostructures formed by FF and FFF peptides. (A) FF nanovesicle, (B) FF nanotube, (C) FFF nanosphere, and (D) FFF nanorod. Peptide main chain and side chain beads are shown in red and white, respectively. Water beads are shown in blue (Guo et al., 2012a, 2014). Reproduced with permission from American Chemical Society and the Royal Society of Chemistry.

Then, a set of design rules were proposed with aromatic residues as the most favorable at positions 2 and 3 in a tripeptide, positive and hydrogen-bonding residues in position 1 and negative residues at position 3. Validated by experiments, the simulation results led to the discovery of tripeptides with capability to form hydrogels. The tools developed would promote the search of peptide sequences for supramolecular properties (Frederix et al., 2015).

Thota et al. simulated the assembly of a series of short peptides F_mD_n and F_mK_n . The peptides consisted of hydrophobic phenylalanine, hydrophilic aspartic acid, and lysine. Within μ s-scale duration, FD and FK formed loose polymeric clusters. With increasing the length of Phe residues in F_mD and F_mK ($m = 2-4$), larger and more stable micelles were observed to form. F_mK and F_mD appeared to assemble into quasi-spherical and sheet-like micelles, respectively. In contrast, smaller and less stable micelles were formed with increasing the length of hydrophilic Lys residues in both F_3K_n and F_6K_n . Interestingly, F_3K_4 and F_6K_8 were found to form quasi-spherical micelles with distinct core/shell structure. This suggested the optimal ratio of hydrophobic/hydrophilic residues to be 3/4. Upon increasing this ratio, quasi-spherical micelles tended to become elliptical aggregates; while decreasing this ratio resulted in smaller and less stable micelles. This ratio found is significant in the rational selection of appropriate F_mK_n peptides to assemble into spherical micelles (Thota et al., 2014).

Apart from the short peptides mentioned above, relatively longer peptides were also simulated at various conditions.

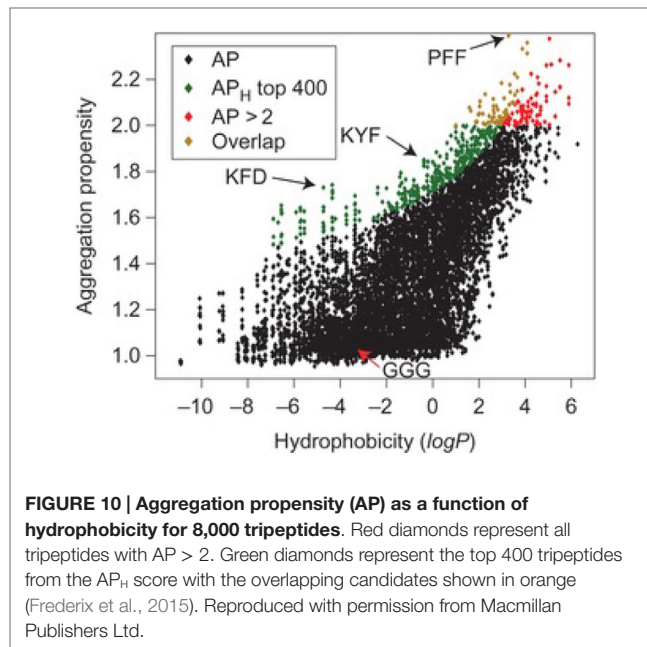


FIGURE 10 | Aggregation propensity (AP) as a function of hydrophobicity for 8,000 tripeptides. Red diamonds represent all tripeptides with $AP > 2$. Green diamonds represent the top 400 tripeptides from the AP_H score with the overlapping candidates shown in orange (Frederix et al., 2015). Reproduced with permission from Macmillan Publishers Ltd.

Emamyari et al. examined the assembly of three ionic peptides $(AEAK)_4$, $((AE)_2(AK)_2)_2$ and $(AE)_4(AK)_4$ in the presence of a hydrophobic surface. The first two peptides assembled into ribbons regardless of pH value. However, third peptide assembled into ribbons at low and high pH but discs at neutral pH, due to

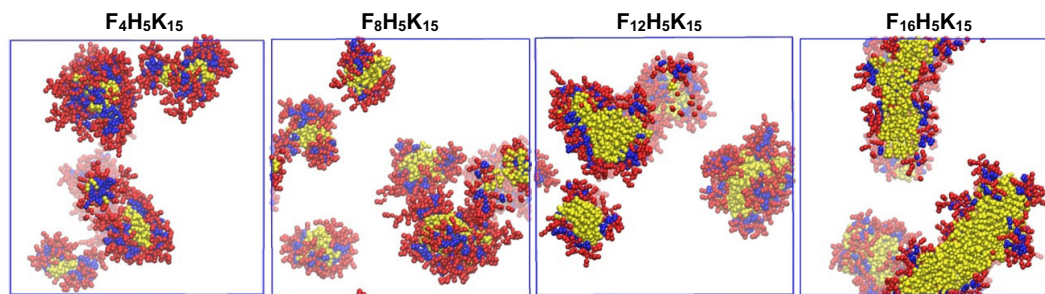


FIGURE 11 | Equilibrium snapshots of $F_4H_5K_{15}$, $F_8H_5K_{15}$, $F_{12}H_5K_{15}$, and $F_{16}H_5K_{15}$ (Thota and Jiang, 2014). Reprinted with permission from American Chemical Society.

strong intrachain electrostatic interactions among similar charged blocks. These observations were consistent with experimental and theoretical investigations (Emamyari and Fazli, 2014). Thota et al. simulated amphiphilic peptide $(AF)_6H_5K_{15}$ (FA32), which was observed to form micelles with Ala and Phe in hydrophobic core, Lys in hydrophilic shell and amphiphilic His at the interface. The assembly process and microscopic structures were analyzed in terms of the number of clusters, the radii of micelle, core and shell, and density profiles. A three-step process was proposed for the assembly: aggregation of small clusters, merging into large clusters, and formation of micelles. With increasing peptide concentration, quasi-spherical micelles changed to elongated shape and micelle size generally increased. The micelle size was predicted to be around 2–4 nm, much smaller than experimentally measured, as attributed to two factors: the simulation was not sufficiently long thus prohibiting the formation of larger micelles; the CG model adopted might not be accurate to describe FA32 (Thota et al., 2013). The derivatives of FA32 were further studied to examine the roles of hydrophobic and hydrophilic residues in assembly. Upon increasing the length of Lys from $(AF)_6H_5K_{10}$, $(AF)_6H_5K_{15}$ and $(AF)_6H_5K_{20}$ to $(AF)_6H_5K_{25}$, assembly capability was reduced with the formation of smaller micelles or the presence of individual peptide chains. When Ala was replaced by more hydrophobic Phe in $(AF)_6H_5K_{15}$, $(AF)_3H_5K_{15}$, and $F_{12}H_5K_{15}$, larger micelles were formed. With increasing the length of Phe in $F_4H_5K_{15}$, $F_8H_5K_{15}$, $F_{12}H_5K_{15}$, and $F_{16}H_5K_{15}$, the micelle size increased and the micelles shifted from spherical to fiber-like as shown in **Figure 11**. This study reveals that assembly capability is reduced by increasing hydrophilicity, whereas increasing hydrophobicity leads to morphology transition (Thota and Jiang, 2014).

Simulations were also carried out for peptide amphiphiles (i.e., lipid-like peptides). By FAMD simulation starting from a predefined configuration, Schatz and coworkers observed the assembly of C_{16} -SLSLAAAEIKVAV into a cylindrical nanofiber. With a radius of 4.4 nm, the nanofiber was found to contain a broad distribution of secondary structure. The β -sheet population of the SLSL and IKV segments was approximately 25%, as experimentally observed. The stability of nanofiber was attributed to the electrostatic interactions between peptides and sodium ions, as well as the van der Waals interactions between peptides (Lee et al., 2011). The same peptide was simulated by CGMD method from a random configuration. As shown in **Figure 12**,

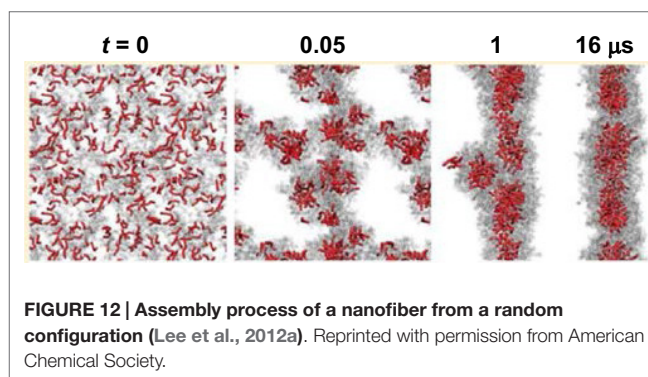
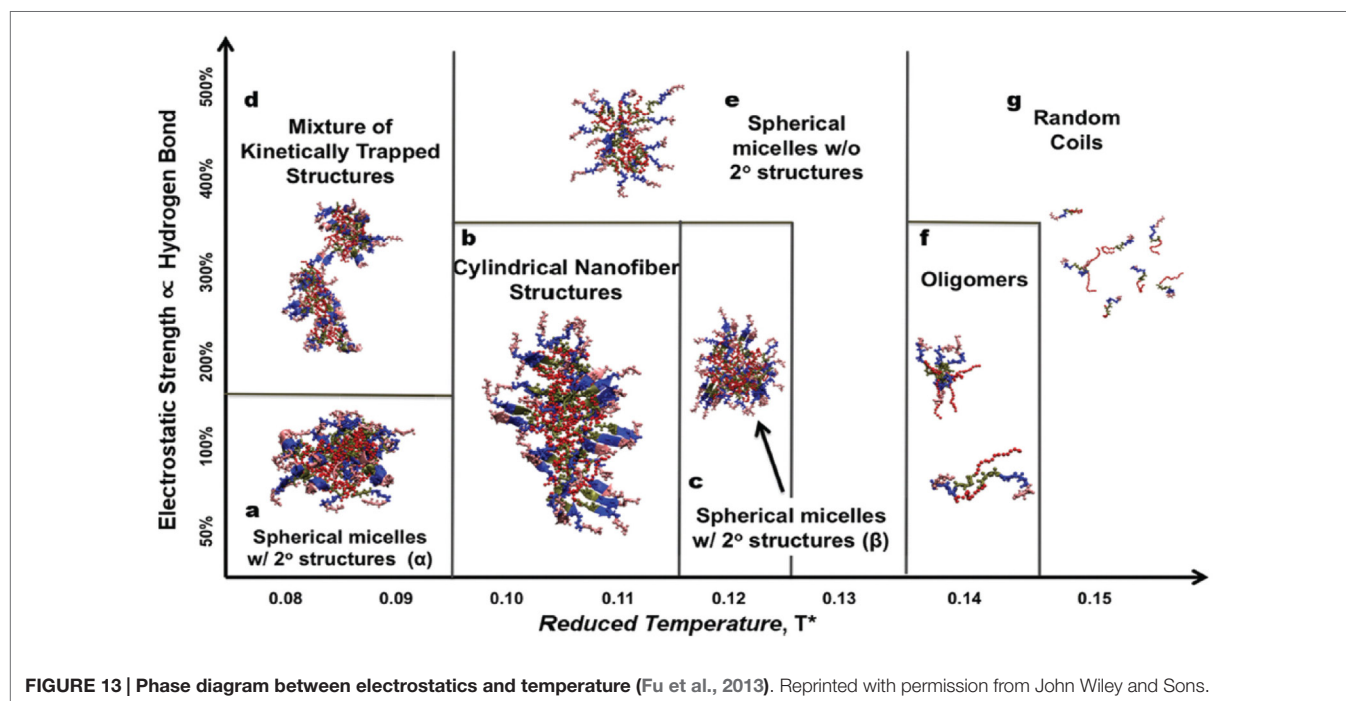


FIGURE 12 | Assembly process of a nanofiber from a random configuration (Lee et al., 2012a). Reprinted with permission from American Chemical Society.

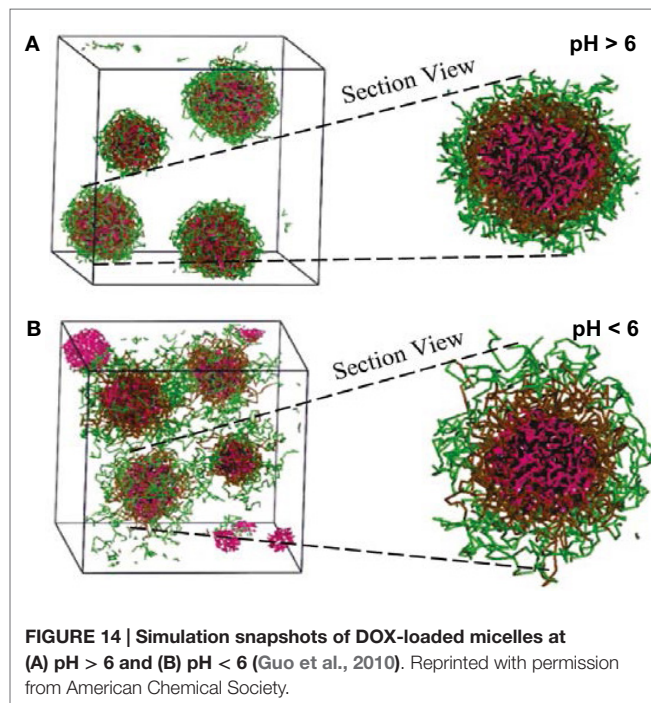
spherical micelles were initially formed, then aggregated into a three-dimensional network, and finally merged into a nanofiber. Consistent with FAMD simulation, water molecules were excluded from the hydrophobic core (Lee et al., 2012a). Two peptide amphiphiles with variation in the content of valine and alanine ratios (PA1: $V_2A_4E_3$ and PA2: $V_4A_2E_3$) were also investigated by them. Though both formed fibers with a size of 8 nm, PA2 showed higher β -sheet content and more hydrogen bonds than PA1 because of higher valine content. The hydrogen bonds might be a cause for the difference in mechanical properties of fibers as observed experimentally (Lee et al., 2012b). Based on a collective assembly coordinate, they further analyzed the free energy profile and mechanism for the assembly of C_{16} -SLSLAAAEIKVAV. The free energy, enthalpy, and entropy differences between the free state and cylindrical nanofiber were found to be -126 kcal/mol, -185 kcal/mol, and -0.19 kcal/(mol·K), respectively. It was revealed that the enthalpic driving force for assembly originated from the conformation energy, electrostatic and van der Waals energy between solvent molecules, as well as between solvent and peptide. This study demonstrates the substantially important roles of peptide structural change, solvation, and solvent redistribution in hierarchical assembly (Yu and Schatz, 2013a,b).

In addition, Nguyen and coworkers developed an extension of the protein intermediate resolution model (ePRIME) in large-scale simulations to examine the effects of electrostatics and temperature in the assembly of 800 peptide amphiphiles (pamitoyl- $V_3A_3E_3$). Starting from random configurations, they found nanostructures of various sizes and shapes. At optimal

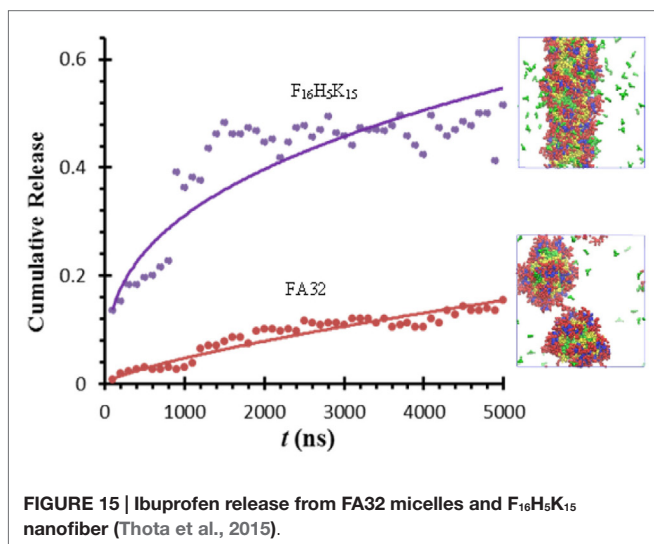


conditions, the assembly mechanism for the formation of cylindrical nanofibers was disclosed. A phase diagram between electrostatics and temperature was constructed shown in **Figure 13** for the delineating morphological regions in response to external stimuli (Fu et al., 2013). In terms of hydrophobicity, they observed the progressive transition from open network to closed cylindrical structure with increasing hydrophobicity (Fu et al., 2014). Furthermore, they examined solvent effects on peptide assembly. The assembly was found to occur via a multistep process with transient intermediates ultimately leading to stable nanostructures. Different kinetic mechanisms were compared on the basis of solvent-accessible surface area, radius of gyration, relative shape anisotropy, intra/intermolecular interaction, and aggregate size (Fu et al., 2015).

Comparatively, only few simulation studies have been reported on the loading/release of drugs in amphiphilic peptides. Guo et al. conducted FAMD simulations to calculate solubility parameters and molar volumes, then used DPD method to examine the microstructures of blank/DOX-loaded micelles of cholesterol conjugated oligopeptides His₁₀Arg₁₀ (HR20-Chol). DOX was efficiently loaded in the core of core/shell micelles at pH > 6. As illustrated in **Figure 14**, all the DOX could be loaded in the micelle with most DOX distributed in the cholesterol core and some also inside the histidine middle layer. Upon decreasing pH, the micelle appeared to be swelling from dense conformation and some DOX molecules were not inside the micelle leading to lower loading. The structural transformation at low pH was attributed the protonation of imidazole group in histidine side chains. The results were found to be qualitatively consistent with experiment (Guo et al., 2010). They further applied multiscale simulations to develop structure–performance relationships for DOX loading in HR20-Chol and HR15-Chol. The simulation showed



qualitative consistency with *in vitro* experiment (Guo et al., 2012c). Chen et al. combined experiment and DPD simulation to design polypeptide-based micelles for dual-drug delivery. The micelles were formed by poly(propylene oxide)-*b*-poly(γ -benzyl-L-glutamate)-*b*-poly(ethylene glycol) (PPO-*b*-PBLG-*b*-PEG) and two drugs, doxorubicin (DOX) and naproxen (Nap). A core-shell-corona structure was observed for the micelles with



PPO/Nap, PBLG/DOX and PEG in the core, shell, and corona, respectively. Moreover, the dual-drug-loaded micelles were demonstrated to be biocompatible at normal physiological conditions and retained anti-cancer efficiency (Chen et al., 2014).

Thota et al. conducted CGMD simulation to investigate ibuprofen (IBU) loading/release in FA32 and its derivatives $F_{12}H_5K_{15}$ and $F_{16}H_5K_{15}$. Upon IBU loading in FA32, quasi-spherical core/shell structured micelles were formed. IBU was predominantly located at the core along with Phe and Ala, whereas Lys and His were in the shell and core/shell interface, respectively. Compared with blank FA32, the size of IBU-loaded micelles was larger. With increasing ratio of drug/peptide, the micelles became larger as attributed to increased hydrophobic interactions. In FA32 derivatives, however, IBU loading led to different morphologies; particularly, a well-structured nanofiber was formed in $F_{16}H_5K_{15}$. As shown in **Figure 15**, IBU release from FA32 micelles upon pH change was found to be slower than from $F_{16}H_5K_{15}$ nanofiber, suggesting the former might be better in controlled release. The simulation study reveals that IBU-loaded morphology can be altered by changing the type of peptide and has a significant effect on IBU release profile (Thota et al., 2015).

SUMMARY AND OUTLOOK

In this review, the recent computational studies for drug delivery in amphiphilic copolymers and peptides are summarized. Most studies have used CG models for a wide variety of copolymers

REFERENCES

- Ahmad, S., Johnston, B. F., Mackay, S. P., Schatzlein, A. G., Gellert, P., Sengupta, D., et al. (2010). In silico modelling of drug-polymer interactions for pharmaceutical formulations. *J. R. Soc. Interface* 7, S423–S433. doi:10.1098/rsif.2010.0190.focus
- Allen, M. P., and Tildesley, D. J. (1987). *Computer Simulation of Liquids*. Oxford: Oxford University Press.
- Chen, L., Jiang, T., Cai, C., Wang, L., Lin, J., and Cao, X. (2014). Polypeptide-based smart micelles for dual-drug delivery: a combination study of experiments

(e.g., PEO/PEG, PCL, and PLA based) and peptides (e.g., di-, tri-, short, and long peptides). The effects of chemical structure, hydrophobicity, and hydrophilicity of building blocks, and drug-carrier compatibility are examined. The key factors governing drug loading efficiency and release profile are identified. These microscopic insights are useful to quantitatively understand experimental observations and deeply unravel fundamental issues in drug delivery.

To overcome the long simulation duration involved in drug loading and release, advanced techniques such as metadynamics and targeted MD may be applied in future computational endeavors. By choosing a set of collective variables and reconstructing free energy landscape, metadynamics method allows for accelerating simulation. However, it is far from trivial to choose appropriate collective variables; additionally, the simulation system tends to reside in high-energy region due to the fluctuation around free energy landscape. By applying a time-dependent geometrical constraint, targeted MD gradually steers a simulation system toward a specified target structure. Nevertheless, equilibrium properties cannot be calculated, the final structure has to be known in prior and the order of events may depend on simulation direction. While simulations with CG models are widely adopted in this field and provide mesoscale insights, the atomistic information of drugs and carriers is not captured. An alternative approach is to mimic the solutes (drugs and carriers) and solvent (water) by atomistic and CG models, respectively. Such a hybrid approach can improve simulation efficiency, meanwhile, provide atom-resolution details. Currently, almost all the simulation studies in this field are focused on a single drug. Experiments have demonstrated that drugs and genes could be simultaneously delivered into cell with better therapeutic effects. Thus, it is intriguing to simulate the loading and delivery of both drugs and genes, and unravel their complex interplay from bottom-up. Furthermore, the transport of drug-loaded carriers through biomembranes into cells is scarcely investigated; however, this transport is of central importance to drug delivery. It is foreseeable that increasingly more computational studies will be carried out to clearly reveal transport mechanisms; thereafter, the entire process of drug delivery including loading, transport, and release can be comprehensively elucidated to facilitate the development of new amphiphilic materials for drug delivery.

ACKNOWLEDGMENTS

The authors are grateful to the National University of Singapore and the Ministry of Education of Singapore (R-279-000-353-112) for financial support.

and simulations. *Adv. Healthc. Mater.* 3, 1508–1517. doi:10.1002/adhm.201300638

- Chen, Y., and Liu, L. H. (2012). Modern methods for delivery of drugs across the blood-brain barrier. *Adv. Drug Deliv. Rev.* 64, 640–665. doi:10.1016/j.addr.2011.11.010
- Cormier, A. R., Pang, X., Zimmerman, M. I., Zhou, H. X., and Paravastu, A. K. (2013). Molecular structure of RADA16-I designer self-assembling peptide nanofibers. *ACS Nano* 7, 7562–7572. doi:10.1021/nn401562f
- Cornell, W. D., Cieplak, P., Bayly, C. I., Gould, I. R., Merz, K. M., Ferguson, D. M., et al. (1995). A second generation force-field for the simulation of proteins,

- nucleic-acids, and organic-molecules. *J. Am. Chem. Soc.* 117, 5179–5197. doi:10.1021/ja00124a002
- Costache, A. D., Sheihet, L., Zaveri, K., Knight, D. D., and Kohn, J. (2009). Polymer–drug interactions in tyrosine-derived triblock copolymer nanospheres: a computational modeling approach. *Mol. Pharm.* 6, 1620–1627. doi:10.1021/mp900114w
- Cui, H. G., Webber, M. J., and Stupp, S. I. (2010). Self-assembly of peptide amphiphiles: from molecules to nanostructures to biomaterials. *Biopolymers* 94, 1–18. doi:10.1002/bip.21328
- Drummond, C. J., and Fong, C. (1999). Surfactant self-assembly objects as novel drug delivery vehicles. *Curr. Opin. Colloid Interface Sci.* 4, 449–456. doi:10.1016/S1359-0294(00)00020-0
- Emamvari, S., and Fazli, H. (2014). Ph-dependent self-assembly of EAK₁₆ peptides in the presence of a hydrophobic surface: coarse-grained molecular dynamics simulation. *Soft Matter* 10, 4248–4257. doi:10.1039/c4sm00307a
- Español, P., and Warren, P. (1995). Statistical mechanics of dissipative particle dynamics. *Europhys. Lett.* 30, 191. doi:10.1209/0295-5075/30/4/001
- Frederix, P. W. J. M., Scott, G. G., Abul-Haija, Y. M., Kalafatovic, D., Pappas, C. G., Javid, N., et al. (2015). Exploring the sequence space for (tri-)peptide self-assembly to design and discover new hydrogels. *Nat. Chem.* 7, 30–37. doi:10.1038/nchem.2122
- Frederix, P. W. J. M., Ulijn, R. V., Hunt, N. T., and Tuttle, T. (2011). Virtual screening for dipeptide aggregation: toward predictive tools for peptide self-assembly. *J. Phys. Chem. Lett.* 2, 2380–2384. doi:10.1021/jz2010573
- Frenkel, D., and Smit, B. (2002). *Understanding Molecular Simulation: From Algorithms to Applications*. San Diego, CA: Academic Press.
- Fu, I. W., Markegard, C. B., Chu, B. K., and Nguyen, H. D. (2013). The role of electrostatics and temperature on morphological transitions of hydrogel nanostructures self-assembled by peptide amphiphiles via molecular dynamics simulations. *Adv. Healthc. Mater.* 2, 1388–1400. doi:10.1002/adhm.201200400
- Fu, I. W., Markegard, C. B., Chu, B. K., and Nguyen, H. D. (2014). Role of hydrophobicity on self-assembly by peptide amphiphiles via molecular dynamics simulations. *Langmuir* 30, 7745–7754. doi:10.1021/la5012988
- Fu, I. W., Markegard, C. B., and Nguyen, H. D. (2015). Solvent effects on kinetic mechanisms of self-assembly by peptide amphiphiles via molecular dynamics simulations. *Langmuir* 31, 315–324. doi:10.1021/la503399x
- Gaucher, G., Dufresne, M.-H., Sant, V. P., Kang, N., Maysinger, D., and Leroux, J.-C. (2005). Block copolymer micelles: preparation, characterization and application in drug delivery. *J. Control. Release* 109, 169–188. doi:10.1016/j.jconrel.2005.09.034
- Go, N., and Taketomi, H. (1978). Respective roles of short-range and longrange interactions in protein folding. *Proc. Natl. Acad. Sci. U.S.A.* 75, 559–563. doi:10.1073/pnas.75.2.559
- Gudlur, S., Sukthankar, P., Gao, J., Avila, L. A., Hiromasa, Y., Chen, J., et al. (2012). Peptide nanovesicles formed by the self-assembly of branched amphiphilic peptides. *PLoS ONE* 7:e45374. doi:10.1371/journal.pone.0045374
- Guo, C., Luo, Y., Zhou, R., and Wei, G. (2012a). Probing the self-assembly mechanism of diphenylalanine-based peptide nanovesicles and nanotubes. *ACS Nano* 6, 3907–3918. doi:10.1021/nn300015g
- Guo, X. D., Qian, Y., Zhang, C. Y., Nie, S. Y., and Zhang, L. J. (2012b). Can drug molecules diffuse into the core of micelles? *Soft Matter* 8, 9989–9995. doi:10.1039/c2sm26200b
- Guo, X. D., Zhang, L. J., and Qian, Y. (2012c). Systematic multiscale method for studying the structure–performance relationship of drug-delivery systems. *Ind. Eng. Chem. Res.* 51, 4719–4730. doi:10.1021/ie2014668
- Guo, C., Luo, Y., Zhou, R., and Wei, G. (2014). Triphenylalanine peptides self-assemble into nanospheres and nanorods that are different from the nanovesicles and nanotubes formed by diphenylalanine peptides. *Nanoscale* 6, 2800–2811. doi:10.1039/c3nr02505e
- Guo, X. D., Tan, J. P. K., Kim, S. H., Zhang, L. J., Zhang, Y., Hedrick, J. L., et al. (2009). Computational studies on self-assembled paclitaxel structures: templates for hierarchical block copolymer assemblies and sustained drug release. *Biomaterials* 30, 6556–6563. doi:10.1016/j.biomaterials.2009.08.022
- Guo, X. D., Zhang, L. J., Wu, Z. M., and Qian, Y. (2010). Dissipative particle dynamics studies on microstructure of pH-sensitive micelles for sustained drug delivery. *Macromolecules* 43, 7839–7844. doi:10.1021/ma101132n
- Gupta, J., Nunes, C., Vyas, S., and Jonnalagadda, S. (2011). Prediction of solubility parameters and miscibility of pharmaceutical compounds by molecular dynamics simulations. *J. Phys. Chem. B* 115, 2014–2023. doi:10.1021/jp108540n
- Hamley, I. W. (2011). Self-assembly of amphiphilic peptides. *Soft Matter* 7, 4122–4138. doi:10.1039/c0sm01218a
- Hauser, C. A., Deng, R., Mishra, A., Loo, Y., Khoe, U., Zhuang, F., et al. (2011). Natural tri- to hexapeptides self-assemble in water to amyloid β -type fiber aggregates by unexpected α -helical intermediate structures. *Proc. Natl. Acad. Sci. U.S.A.* 108, 1361–1366. doi:10.1073/pnas.1014796108
- Hayward, R. C., and Pochan, D. J. (2010). Tailored assemblies of block copolymers in solution: it is all about the process. *Macromolecules* 43, 3577–3584. doi:10.1021/ma9026806
- He, C. L., Zhuang, X. L., Tang, Z. H., Tian, H. Y., and Chen, X. S. (2012). Stimuli-sensitive synthetic polypeptide-based materials for drug and gene delivery. *Adv. Healthc. Mater.* 1, 48–78. doi:10.1002/adhm.201100008
- Hoogerbrugge, P. J., and Koelman, J. M. V. A. (1992). Simulating microscopic hydrodynamic phenomena with dissipative particle dynamics. *Europhys. Lett.* 19, 155. doi:10.1209/0295-5075/19/3/001
- Hosseinkhani, H., Hong, P. D., and Yu, D. S. (2013). Self-assembled proteins and peptides for regenerative medicine. *Chem. Rev.* 113, 4837–4861. doi:10.1021/cr300131h
- Hubbell, J. A., and Chikoti, A. (2012). Nanomaterials for drug delivery. *Science* 337, 303–305. doi:10.1126/science.1219657
- Jeon, J., Mills, C. E., and Shell, M. S. (2013). Molecular insights into diphenylalanine nanotube assembly: all-atom simulations of oligomerization. *J. Phys. Chem. B* 117, 3935–3943. doi:10.1021/jp308280d
- Jiang, W., Luo, J., and Nangia, S. (2015). Multiscale approach to investigate self-assembly of telodendrimer based nanocarriers for anticancer drug delivery. *Langmuir* 31, 4270–4280. doi:10.1021/la503949b
- Jorgensen, W. L., Maxwell, D. S., and Tiradovics, J. (1996). Development and testing of the opls all-atom force field on conformational energetics and properties of organic liquids. *J. Am. Chem. Soc.* 118, 11225–11236. doi:10.1021/ja9621760
- Kasimova, A. O., Pavan, G. M., Danani, A., Mondon, K., Cristiani, A., Scapozza, L., et al. (2012). Validation of a novel molecular dynamics simulation approach for lipophilic drug incorporation into polymer micelles. *J. Phys. Chem. B* 116, 4338–4345. doi:10.1021/jp2104819
- Koelman, J. M. V. A., and Hoogerbrugge, P. J. (1993). Dynamic simulations of hard-sphere suspensions under steady shear. *Europhys. Lett.* 21, 363. doi:10.1209/0295-5075/21/3/018
- Kumar, N., and Kumar, R. (2014). *Nanotechnology and Nanomaterials in the Treatment of Life-Threatening Diseases*. Oxford: William Andrew Publishing, 177–246.
- Lawrence, M. J. (1994). Surfactant systems: their use in drug delivery. *Chem. Soc. Rev.* 23, 417–424. doi:10.1039/cs9942300417
- Lee, O.-S., Cho, V., and Schatz, G. C. (2012a). Modeling the self-assembly of peptide amphiphiles into fibers using coarse-grained molecular dynamics. *Nano Lett.* 12, 4907–4913. doi:10.1021/nl302487m
- Lee, O.-S., Liu, Y., and Schatz, G. (2012b). Molecular dynamics simulation of β -sheet formation in self-assembled peptide amphiphile fibers. *J. Nanopart. Res.* 14, 1–7. doi:10.1007/s11051-012-0936-z
- Lee, O.-S., Stupp, S. I., and Schatz, G. C. (2011). Atomistic molecular dynamics simulations of peptide amphiphile self-assembly into cylindrical nanofibers. *J. Am. Chem. Soc.* 133, 3677–3683. doi:10.1021/ja110966y
- Li, W., Feng, S. S., and Guo, Y. J. (2012). Tailoring polymeric micelles to optimize delivery to solid tumors. *Nanomedicine* 7, 1235–1252. doi:10.2217/nnm.12.88
- Li, X., Tang, Y. H., Liang, H., and Karniadakis, G. E. (2014). Large-scale dissipative particle dynamics simulations of self-assembled amphiphilic systems. *Chem. Commun.* 50, 8306–8308. doi:10.1039/c4cc03096f
- Lin, W. J., Nie, S. Y., Chen, Q., Qian, Y., Wen, X. F., and Zhang, L. J. (2014). Structure–property relationship of ph-sensitive (PCL)₂(PDEA-*b*-PPEGMA)₂ micelles: experiment and DPD simulation. *AIChE J.* 60, 3634–3646. doi:10.1002/aic.14562
- Liu, G. Y., Lv, P. L., Chen, C. J., Liu, X. S., Hu, X. F., and Ji, J. (2011). Biocompatible and biodegradable polymersomes for pH-triggered drug release. *Soft Matter* 7, 6629–6636. doi:10.1039/c1sm05308f
- Lopez-Perez, D. E., Revilla-Lopez, G., Hamley, I. W., and Aleman, C. (2013). Molecular insights into aggregates made of amphiphilic Fmoc-tetrapeptides. *Soft Matter* 9, 11021–11032. doi:10.1039/c3sm51826d
- Loverde, S. M. (2014). Computer simulation of polymer and biopolymer self-assembly for drug delivery. *Mol. Simul.* 40, 794–801. doi:10.1080/08927022.2014.898118

- Loverde, S. M., Klein, M. L., and Discher, D. E. (2011). Nanoparticle shape improves delivery: rational coarse grained molecular dynamics of taxol in worm-like PEG-PCL micelles. *Adv. Mater.* 24, 3823–3830. doi:10.1002/adma.201103192
- Luo, Z. L., and Jiang, J. W. (2012). pH-sensitive drug loading/releasing in amphiphilic copolymer PAE-PEG: integrating molecular dynamics and dissipative particle dynamics simulations. *J. Control. Release* 162, 185–193. doi:10.1016/j.jconrel.2012.06.027
- Mackenzie, R., Booth, J., Alexander, C., Garnett, M. C., and Laughton, C. A. (2015). Multiscale modeling of drug-polymer nanoparticle assembly identifiers parameters influencing drug encapsulation efficiency. *J. Chem. Theory Comput.* 11, 2705–2713. doi:10.1021/ct501152a
- MacKerell, A. D., Bashford, D., Bellott, M., Dunbrack, R. L., Evansck, J. D., Field, M. J., et al. (1998). All-atom empirical potential for molecular modeling and dynamics studies of proteins. *J. Phys. Chem. B* 102, 3586–3616. doi:10.1021/jp973084f
- Mai, Y., and Eisenberg, A. (2012). Self-assembly of block copolymers. *Chem. Soc. Rev.* 41, 5969–5985. doi:10.1039/c2cs35115c
- Marrink, S. J., De Vries, A. H., and Mark, A. E. (2004). Coarse grained model for semiquantitative lipid simulations. *J. Phys. Chem. B* 108, 750–760. doi:10.1021/jp036508g
- Marrink, S. J., Risselada, H. J., Yefimov, S., Tieleman, D. P., and De Vries, A. H. (2007). The martini force field: coarse grained model for biomolecular simulations. *J. Phys. Chem. B* 111, 7812–7824. doi:10.1021/jp071097f
- Meng, F. H., Zhong, Z. Y., and Feijen, J. (2009). Stimuli-responsive polymersomes for programmed drug delivery. *Biomacromolecules* 2, 197–209. doi:10.1021/bm801127d
- Miyazawa, S., and Jernigan, R. L. (1985). Estimation of effective interresidue contact energies from protein crystal-structures – quasichemical approximation. *Macromolecules* 18, 534–552. doi:10.1021/ma00145a039
- Mondai, J., and Yethiraj, A. (2012). Effect of secondary structure on the self-assembly of amphiphilic molecules: a multiscale simulation study. *J. Chem. Phys.* 136, 084902. doi:10.1063/1.3689298
- Monticelli, L., Kandasamy, S. K., Periole, X., Larson, R. G., Tieleman, D. P., and Marrink, S. J. (2008). The martini coarse-grained force field: extension to proteins. *J. Chem. Theory Comput.* 4, 819–834. doi:10.1007/s00894-013-1991-9
- Mu, X., Eckes, K. M., Nguyen, M. M., Suggs, L. J., and Ren, P. (2012). Experimental and computational studies reveal an alternative supramolecular structure for fmoc-dipeptide self-assembly. *Biomacromolecules* 13, 3562–3571. doi:10.1021/bm301007r
- Natarajan, J. V., Nugraha, C., Ng, X. W., and Venkataraman, S. (2014). Sustained-release from nanocarriers: a review. *J. Control. Release* 193, 122–138. doi:10.1016/j.jconrel.2014.05.029
- Nicola, A. D., Hezaveh, S., Zhao, Y., Kawakatsu, T., Roccatano, D., and Milano, G. (2014). Micellar drug nanocarriers and biomembranes: how to they interact? *Phys. Chem. Chem. Phys.* 16, 5093–5105. doi:10.1039/c3cp54242d
- Nie, S. Y., Lin, W. J., Yao, N., Guo, X. D., and Zhang, L. J. (2014). Drug release from pH-sensitive polymeric micelles with different drug distributions: insight from coarse-grained simulations. *ACS Appl. Mater. Interf.* 6, 17668–17678. doi:10.1021/am503920m
- Nie, S. Y., Sun, Y., Lin, W. J., Wu, W. S., Guo, X. D., Qian, Y., et al. (2013). Dissipative particle dynamics studies of doxorubicin-loaded micelles assembled from four-arm star triblock polymers 4AS-PCL-*b*-PDEAEMA-*b*-PPEGMA and their pH-release mechanism. *J. Phys. Chem. B* 117, 13688–13697. doi:10.1021/jp407529u
- Patel, S., Lavasanifar, A., and Choi, P. (2008). Application of molecular dynamics simulation to predict the compatibility between water-insoluble drugs and self-associating poly(ethylene oxide)-*b*-poly(*ε*-caprolactone) block copolymers. *Biomacromolecules* 9, 3014–3023. doi:10.1021/bm800320z
- Patel, S. K., Lavasanifar, A., and Choi, P. (2009). Roles of nonpolar and polar intermolecular interactions in the improvement of the drug loading capacity of PEO-*b*-PCL with increasing pcl content for two hydrophobic cucurbitacin drugs. *Biomacromolecules* 10, 2584–2591. doi:10.1021/bm900512h
- Patel, S. K., Lavasanifar, A., and Choi, P. (2010). Molecular dynamics study of the encapsulation capability of a PCL-PEO based block copolymer for hydrophobic drugs with different spatial distributions of hydrogen bond donors and acceptors. *Biomaterials* 31, 1780–1786. doi:10.1016/j.biomaterials.2009.11.060
- Posocco, P., Fermeglia, M., and Pricl, S. (2010). Morphology prediction of block copolymers for drug delivery by mesoscale simulations. *J. Mater. Chem.* 20, 7742–7753. doi:10.1039/c0jm01301c
- Rad-Malekshahi, M., Visscher, K. M., Rodrigues, J. P., De Vries, R., Hennink, W. E., Baldus, M., et al. (2015). The supramolecular organization of a peptide-based nanocarrier at high molecular detail. *J. Am. Chem. Soc.* 137, 7775–7784. doi:10.1021/jacs.5b02919
- Razavilar, N., and Choi, P. (2014). Molecular dynamics study of the diffusivity of a hydrophobic drug cucurbitacin B in pseudo-poly(ethylene oxide)-*b*-caprolactone micelle environments. *Langmuir* 30, 7798–7803. doi:10.1021/la500572p
- Rissanou, A. N., Georgilis, E., Kasotakis, E., Mitraki, A., and Harmandaris, V. (2013). Effect of solvent on the self-assembly of dialanine and diphenylalanine peptides. *J. Phys. Chem. B* 117, 3962–3975. doi:10.1021/jp311795b
- Rodriguez-Hidalgo, M.-D.-R., Soto-Figueroa, C., and Vicente, L. (2011). Mesoscopic simulation of the drug release mechanism on the polymeric vehicle P(ST-DVB) in an acid environment. *Soft Matter* 7, 8224–8230. doi:10.1039/c1sm05667k
- Rösler, A., Vandermeulen, G. W. M., and Klok, H.-A. (2001). Advanced drug delivery devices via self-assembly of amphiphilic block copolymers. *Adv. Drug Deliv. Rev.* 53, 95–108. doi:10.1016/S0169-409X(01)00222-8
- Sevink, G. J. A., Charlaganov, M., and Fraaije, J. G. E. M. (2013). Coarse-grained hybrid simulation of liposomes. *Soft Matter* 9, 2816–2831. doi:10.1039/c2sm27492b
- Shimixu, T., Masuda, M., and Minamikawa, H. (2005). Supramolecular nanotube architectures based on amphiphilic molecules. *Chem. Rev.* 105, 1401–1443. doi:10.1021/cr030072j
- Srinivas, G., Mohan, R. V., and Kelkar, A. D. (2013). Polymer micelle assisted transport and delivery of model hydrophilic components inside a biological lipid vesicle: a coarse-grain simulation study. *J. Phys. Chem. B* 117, 12095–12104. doi:10.1021/jp405381k
- Sundar, S., Chen, Y., and Tong, Y. W. (2014). Delivery of therapeutics and molecules using self-assembled peptides. *Curr. Med. Chem.* 21, 2469–2479. doi:10.2174/0929867321666131212152637
- Tama, F., Wriggers, W., and Brooks, C. L. (2002). Exploring global distortions of biological macromolecules and assemblies from low-resolution structural information and elastic network theory. *J. Mol. Biol.* 321, 297–305. doi:10.1016/S0022-2836(02)00627-7
- Tanner, P., Baumann, P., Enea, R., Onaca, O., Palivan, C., and Meier, W. (2011). Polymeric vesicles: from drug carriers to nanoreactors and artificial organelles. *Acc. Chem. Res.* 44, 1039–1049. doi:10.1021/ar200036k
- Thota, N., Hu, Z. Q., and Jiang, J. W. (2015). Ibufen loading and release in amphiphilic peptide (AF)₆H₅K₁₅ and its derivatives: a coarse-grained molecular dynamics simulation study. *Mol. Simul.*
- Thota, N., and Jiang, J. W. (2014). Self-assembly of amphiphilic peptide (AF)₆H₅K₁₅ derivatives: roles of hydrophilic and hydrophobic residues. *J. Phys. Chem. B* 118, 2683–2692. doi:10.1021/jp500406p
- Thota, N., Luo, Z. L., Hu, Z. Q., and Jiang, J. (2013). Self-assembly of amphiphilic peptide (AF)₆H₅K₁₅: coarse-grained molecular dynamics simulation. *J. Phys. Chem. B* 117, 9690–9698. doi:10.1021/jp4059752
- Thota, N., Ma, Y. J., and Jiang, J. W. (2014). Molecular insights into the self-assembly of short amphiphilic peptides fmdn and fmkn. *RSC Adv.* 4, 60741–60748. doi:10.1063/1.3314309
- Tian, B., Tao, X., Ren, T., Weng, Y., Lin, X., Zhang, Y., et al. (2012). Polypeptide-based vesicles: formation, properties and application for drug delivery. *J. Mater. Chem.* 22, 17404–17414. doi:10.1039/c2jm31806g
- Trent, A., Marullo, R., Lin, B., Black, M., and Tirrell, M. (2011). Structural properties of soluble peptide amphiphile micelles. *Soft Matter* 7, 9572–9582. doi:10.1016/j.sbi.2009.07.008
- Tyrrell, Z. L., Shen, Y., and Radosz, M. (2010). Fabrication of micellar nanoparticles for drug delivery through the self-assembly of block copolymers. *Prog. Polym. Sci.* 35, 1128–1143. doi:10.1016/j.progpolymsci.2010.06.003
- Uchegbu, I. F., and Vyas, S. P. (1998). Non-ionic surfactant based vesicles (niosomes) in drug delivery. *Int. J. Pharm.* 172, 33–70. doi:10.1016/S0378-5173(98)00169-0
- Ulijn, R. V., and Smith, A. M. (2008). Designing peptide based nanomaterials. *Chem. Soc. Rev.* 37, 664–675. doi:10.1039/b609047h

- Velichko, Y. S., Stupp, S. I., and de La Cruz, M. O. (2008). Molecular simulation study of peptide amphiphile self-assembly. *J. Phys. Chem. B* 112, 2326–2334. doi:10.1021/jp074420n
- Venkataraman, S., Hedrick, J. L., Ong, Z. Y., Yang, C., Ee, P. L. R., Hammond, P. T., et al. (2011). The effects of polymeric nanostructure shape on drug delivery. *Adv. Drug Deliv. Rev.* 63, 1228–1246. doi:10.1016/j.addr.2011.06.016
- Wei, H., Zhuo, R.-X., and Zhang, X. Z. (2013). Design and development of polymeric micelles with cleavable linkers for intracellular drug delivery. *Prog. Polym. Sci.* 38, 503–535. doi:10.1016/j.progpolymsci.2012.07.002
- Yu, T., and Schatz, G. C. (2013a). Free energy landscape for peptide amphiphile self-assembly: stepwise versus continuous assembly mechanisms. *J. Phys. Chem. B* 117, 14059–14064. doi:10.1021/jp409305e
- Yu, T., and Schatz, G. C. (2013b). Free energy profile and mechanism of self-assembly of peptide amphiphiles based on a collective assembly coordinate. *J. Phys. Chem. B* 117, 9004–9013. doi:10.1021/jp404835q
- Zhang, X. X., Eden, H. S., and Chen, X. (2012). Peptides in cancer nanomedicine: drug carriers, targeting ligands and protease substrates. *J. Control. Release* 159, 2–13. doi:10.1016/j.jconrel.2011.10.023
- Zhao, X., Pan, F., Xu, H., Yaseen, M., Shan, H., Hauser, C. A., et al. (2010). Molecular self-assembly and applications of designer peptide amphiphiles. *Chem. Soc. Rev.* 39, 3480–3498. doi:10.1039/b915923c
- Zheng, L. S., Yang, Y. Q., Guo, X. D., Sun, Y., Qian, Y., and Zhang, L. J. (2011). Mesoscopic simulations on the aggregation behavior of pH-responsive polymeric micelles for drug delivery. *J. Colloid Interface Sci.* 363, 114–121. doi:10.1016/j.jcis.2011.07.040

Conflict of Interest Statement: The authors declare that the research was conducted in the absence of any commercial or financial relationships that could be construed as a potential conflict of interest.

Copyright © 2015 Thota and Jiang. This is an open-access article distributed under the terms of the Creative Commons Attribution License (CC BY). The use, distribution or reproduction in other forums is permitted, provided the original author(s) or licensor are credited and that the original publication in this journal is cited, in accordance with accepted academic practice. No use, distribution or reproduction is permitted which does not comply with these terms.