



OPEN ACCESS

APPROVED BY
Frontiers Editorial Office,
Frontiers Media SA, Switzerland

*CORRESPONDENCE
Rebecca L. Jackson
✉ rebecca.jackson@csiro.au

†PRESENT ADDRESS
Rebecca L. Jackson,
Coasts and Ocean Research, Oceans
and Atmosphere, Commonwealth Scientific
and Industrial Research Organisation,
Canberra, ACT, Australia

RECEIVED 06 June 2024

ACCEPTED 07 June 2024

PUBLISHED 17 July 2024

CITATION
Jackson RL, Woodhouse MT, Gabric AJ,
Cropp RA, Swan HB, Deschaseaux ESM and
Trounce H (2024) Corrigendum: Modelling
the influence of coral-reef-derived
dimethylsulfide on the atmosphere
of the Great Barrier Reef, Australia.
Front. Mar. Sci. 11:1445211.
doi: 10.3389/fmars.2024.1445211

COPYRIGHT
© 2024 Jackson, Woodhouse, Gabric, Cropp,
Swan, Deschaseaux and Trounce. This is an
open-access article distributed under the terms
of the [Creative Commons Attribution License
\(CC BY\)](#). The use, distribution or reproduction
in other forums is permitted, provided the
original author(s) and the copyright owner(s)
are credited and that the original publication
in this journal is cited, in accordance with
accepted academic practice. No use,
distribution or reproduction is permitted
which does not comply with these terms.

Corrigendum: Modelling the influence of coral-reef-derived dimethylsulfide on the atmosphere of the Great Barrier Reef, Australia

Rebecca L. Jackson^{1,2*†}, Matthew T. Woodhouse³,
Albert J. Gabric², Roger A. Cropp², Hilton B. Swan⁴,
Elisabeth S. M. Deschaseaux⁴ and Haydn Trounce⁵

¹Coasts and Ocean Research, Oceans and Atmosphere, Commonwealth Scientific and Industrial Research Organisation, Canberra, ACT, Australia, ²School of Environment and Science, Griffith University, Nathan, QLD, Australia, ³Climate Science Centre, Oceans and Atmosphere, Commonwealth Scientific and Industrial Research Organisation, Aspendale, VIC, Australia, ⁴Centre for Coastal Biogeochemistry, Faculty of Science and Engineering, Southern Cross University, Lismore, NSW, Australia, ⁵International Laboratory for Air Quality and Health, School of Earth and Atmospheric Sciences, Queensland University of Technology, Brisbane, QLD, Australia

KEYWORDS

coral reef, dimethylsulfide (DMS), sulfate, aerosol, ACCESS

A corrigendum on

Modelling the influence of coral-reef-derived dimethylsulfide on the atmosphere of the Great Barrier Reef, Australia

by Jackson RL, Woodhouse MT, Gabric AJ, Cropp RA, Swan HB, Deschaseaux ESM and Trounce H (2022). *Front. Mar. Sci.* 9:910423. doi: 10.3389/fmars.2022.910423

Text Correction

In the published article, there was an error. The default seawater dimethylsulfide (DMS) climatology used in the ACCESS-AM2 simulations was incorrectly named as the [Lana et al. \(2011\)](#) climatology and should be [Kettle et al. \(1999\)](#). ACCESS-AM2 uses the GA7.1 configuration, in which the seawater DMS climatology is described as being updated from [Kettle et al. \(1999\)](#) to [Lana et al. \(2011\)](#) ([Walters et al., 2019](#)). Since publication, it was found that the model was still using the [Kettle et al. \(1999\)](#) climatology.

In the article, the influence of coral reef-derived DMS was investigated by calculating the difference between a control and experimental simulation which respectively prescribed seawater DMS concentration using the default climatology and a climatology derived for the GBR ([Jackson et al., 2021](#)). Using [Kettle et al. \(1999\)](#) as the default climatology does not affect the results, as the difference between the control and experimental simulations still reflects the influence of the coral reef DMS source. Further, no new seawater DMS measurements for the GBR region have been incorporated into newer climatologies ([Lana et al., 2011](#); [Hulswar et al., 2022](#)) since [Kettle et al. \(1999\)](#).

A correction has been made to section **1 Introduction**, paragraph 9. This sentence previously stated:

“Global climate models typically prescribe DMS_w concentrations using the Lana et al. (2011) monthly mean climatology. This climatology was derived from four decades of DMS_w observations over most of the global ocean (Kettle et al., 1999). However, very few observations were included for coral reef regions and extrapolation did not account for seasonal or spatial variability across coral reef flats and lagoon waters.”

The corrected sentence appears below:

“Global climate models typically prescribe DMS_w concentrations using the Kettle et al. (1999) or Lana et al. (2011) monthly mean climatologies. These climatologies were derived from more than three decades of DMS_w observations over most of the global ocean (Kettle et al., 1999). However, very few observations were included for coral reef regions and extrapolation did not account for seasonal or spatial variability across coral reef flats and lagoon waters.”

A correction has been made to section 2.2 *Experimental design*, 2.2.1 *Seawater surface DMS concentration*, paragraph 1. This sentence previously stated:

“In ACCESS-AM2, DMS_w is prescribed from the global Lana et al. (2011) monthly mean climatology, henceforth L11 (Figure 1A).”

The corrected sentence appears below:

“In ACCESS-AM2, DMS_w is prescribed from the global Kettle et al. (1999) monthly mean climatology, henceforth K99 (Figure 1A).”

The name of the default seawater DMS climatology should be “K99” instead of “L11” throughout the remainder of the article, including in Table 1, in the legends for Table 2 and Figures 1–4 in the main article, and in the legends for SI Figures 1, 2, 4, 5 in the Supplementary Material. The corrected Table 1, Table 2, and Figures 1–4 appear below.

The authors apologize for this error and state that this does not change the scientific conclusions of the article in any way. The original article has been updated.

TABLE 2 Annual mean change [actual (percentage)] between the GBR DMS and K99 simulations area-averaged over north-eastern Australia.

	Experiment 1	Experiment 2
DMS flux (μmol m ⁻² d ⁻¹)	+0.6 (25.1%)	+0.6 (25.9%)
DMS _a (ppt)	+29.4 (29.2%)	+29.5 (29.3%)
SO ₂ (ppt)	+5.6 (1.4%)	+3.0 (0.9%)
H ₂ SO ₄ (ppt)	+5.4 × 10 ⁻³ (3.0%)	+6.2 × 10 ⁻³ (4.0%)
Nuc. sul. mass (ppt)	-5.2 × 10 ⁻⁵ (1.0%)	-4.9 × 10 ⁻⁶ (0.1%)
Ait. sul. mass (ppt)	+0.3 (0.8%)	+0.4 (1.2%)
Acc. sul. mass (ppt)	+0.04 (0.01%)	-14.5 (3.6%)
Crs. sul. mass (ppt)	+0.2 (2.4%)	+0.05 (0.7%)
Nuc. no. (m ⁻³)	-1.1 × 10 ⁻²¹ (0.6%)	-1.1 × 10 ⁻²¹ (0.6%)
Ait. no. (m ⁻³)	-1.5 × 10 ⁻²⁰ (0.2%)	+1.1 × 10 ⁻²⁰ (0.2%)
Acc. no. (m ⁻³)	-8.4 × 10 ⁻²¹ (0.1%)	-1.1 × 10 ⁻²⁰ (0.1%)
Crs. no. (m ⁻³)	+2.3 × 10 ⁻²² (0.5%)	-8.6 × 10 ⁻²³ (0.2%)
N ₃ (cm ⁻³)	-0.3 (0.1%)	+0.3 (0.1%)
CCN ₇₀ (cm ⁻³)	-0.03 (0.01%)	-0.3 (0.1%)
Nd (m ⁻³)	+0.07 (0.04%)	-0.3 (0.2%)
SWR (W m ⁻²)	+0.07 (0.03%)	-0.2 (0.1%)
Wind (m s ⁻¹)	-7.3 × 10 ⁻³ (0.1%)	+3.9 × 10 ⁻³ (0.1%)

* Nuc., nucleation; Ait., Aitken; Acc., accumulation; Crs., coarse; sul., sulfate; no., number concentration; SWR, surface downwelling short-wave radiation; Wind, wind speed at 10 m.

TABLE 1 Mean and range of observed and modelled DMS_a (ppt or pmol mol⁻¹) during the RVI, Mission Beach and Heron Island surveys of the R2R campaign [concentration (deviation from observed mean)].

		Mean	Range
RVI	Observed	33	<1 – 158
(n = 456)	K99	86 (+ 53)	8 – 213
	GBR DMS	114 (+ 81)	33 – 245
Mission Beach	Observed	31	9 – 99
(n = 296)	K99	80 (+ 49)	27 – 187
	GBR DMS	89 (+ 58)	41 – 195
Heron Island	Observed	90	49 – 156
(n = 274)	K99	157 (+ 67)	60 – 289
	GBR DMS	199 (+ 109)	74 – 316

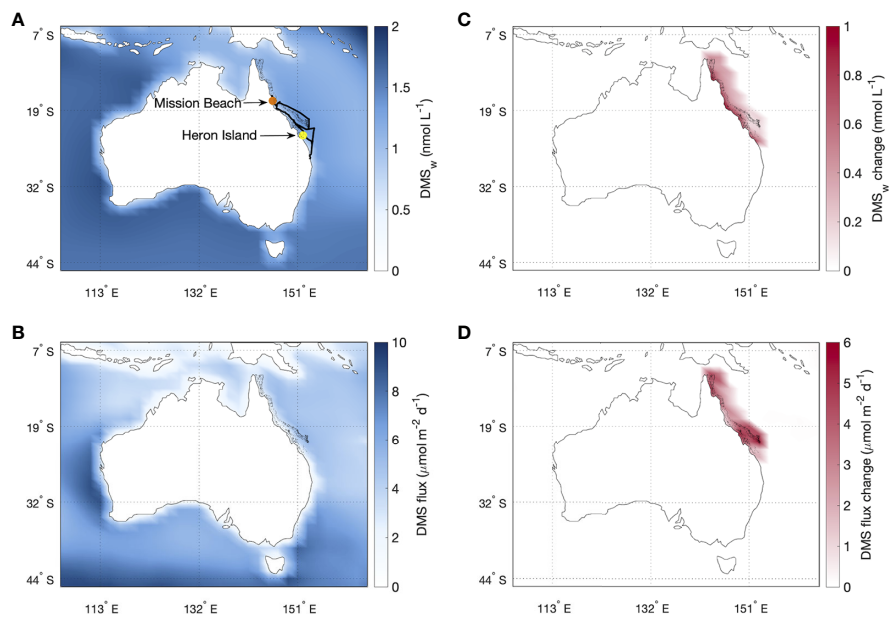


FIGURE 1
 Annual mean **(A)** DMS_w and **(B)** DMS sea-air flux based on the K99 climatology, and the change in each variable due to the inclusion of **(C)** the GBR DMS climatology and **(D)** the GBR DMS climatology and coral-air DMS flux. The RVI path (black), Mission Beach (orange) and Heron Island (yellow) survey locations are shown in **(A)**.

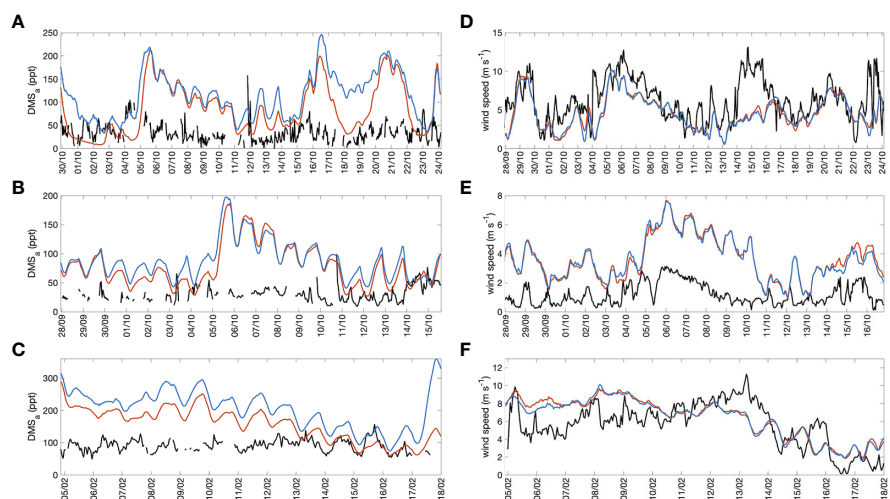


FIGURE 2
 Time-series of observed (black) and modelled (left panels) DMSa and (right panels) wind speed for the K99 (orange) and GBR DMS (blue) simulations during the **(A, D)** RVI, **(B, E)** Mission Beach and **(C, F)** Heron Island surveys.

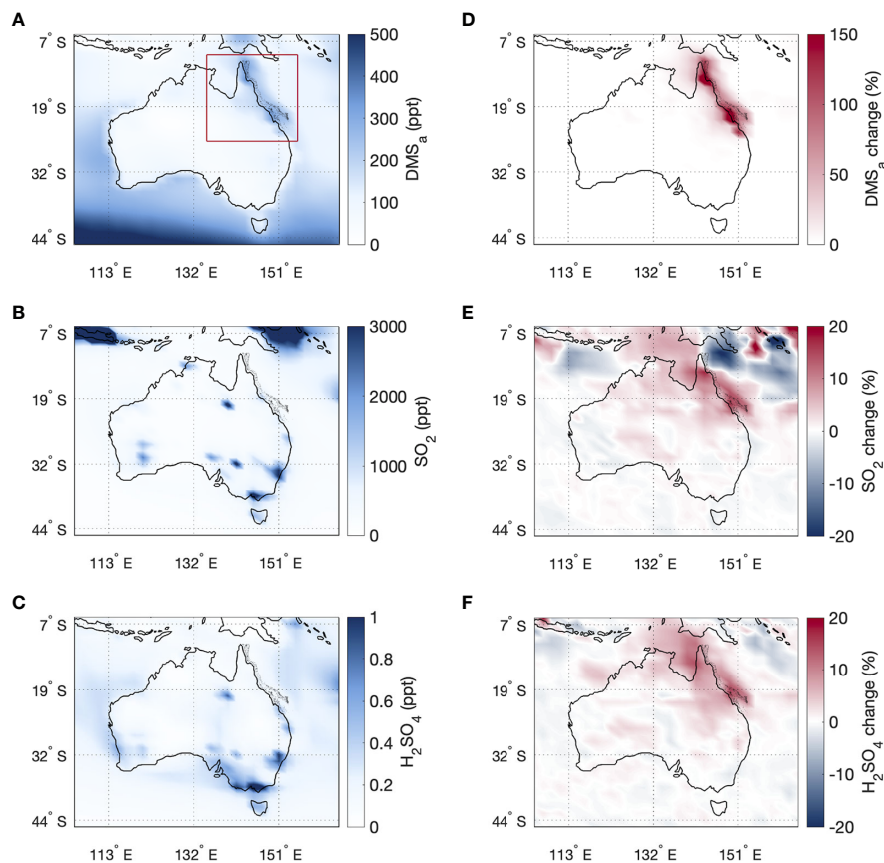


FIGURE 3
 Annual mean (A) DMSa, (B) SO₂ and (C) H₂SO₄ for the GBR DMS simulation, and (D–F) the percentage change in each variable between the GBR DMS and K99 simulations. The north-eastern Australian region (9.5–26°S; 135–155°E) for which the area-averaged changes are calculated for Table 2 is shown in red in panel (A).

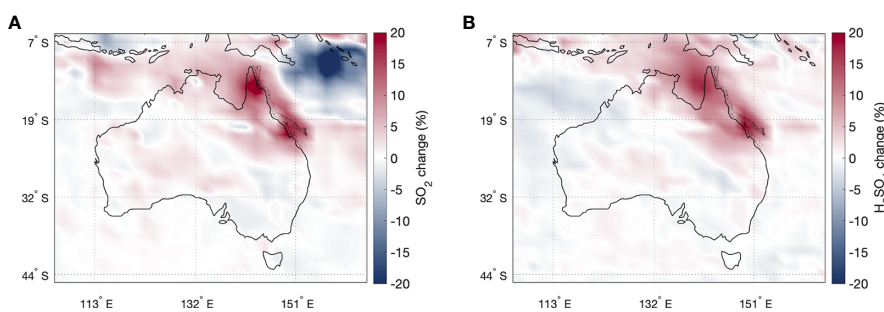


FIGURE 4
 Change in annual mean (A) SO₂ and (B) H₂SO₄ between the GBR DMS and K99 simulations, when high anthropogenic SO₂ emissions from north-eastern Australia have been removed.

Publisher’s note

All claims expressed in this article are solely those of the authors and do not necessarily represent those of their affiliated

organizations, or those of the publisher, the editors and the reviewers. Any product that may be evaluated in this article, or claim that may be made by its manufacturer, is not guaranteed or endorsed by the publisher.

References

- Hulswar, S., Simo, R., Gali, M., Bell, T. G., Lana, A., Inamdar, S., et al. (2022). Third revision of the global surface seawater dimethyl sulfide climatology (DMS-Rev3). *Earth System Sci. Data* 14, 2963–2987. doi: 10.5194/essd-14-2963-2022
- Jackson, R. L., Gabric, A. J., Matrai, P. A., Woodhouse, M. T., Cropp, R. A., Jones, G. B., et al. (2021). Parameterizing the impact of seawater temperature and irradiance on dimethylsulfide (DMS) in the great barrier reef and the contribution of coral reefs to the global sulfur cycle. *J. Geophys. Res.: Oceans* 126, e2020JC016783. doi: 10.1029/2020JC016783
- Kettle, A. J., Andreae, M. O., Amouroux, D., Andreae, T. W., Bates, T. S., Berresheim, H., et al. (1999). A global database of sea surface dimethylsulfide (DMS) measurements and a procedure to predict sea surface DMS as a function of latitude, longitude, and month. *Global Biogeochem. Cycles* 13 (2), 399–444. doi: 10.1029/1999GB900004
- Lana, A., Bell, T. G., Simó, R., Vallina, S. M., Ballabrera-Poy, J., Kettle, A. J., et al. (2011). An updated climatology of surface dimethylsulfide concentrations and emission fluxes in the global ocean. *Global Biogeochem. Cycles* 25 (1), GB1004. doi: 10.1029/2010GB003850
- Walters, D., Baran, A. J., Boutle, I., Brooks, M., Earnshaw, P., Edwards, J., et al. (2019). The Met Office Unified Model global atmosphere 7.0/7.1 and JULES global land 7.0 configurations. *Geoscientific Model. Dev.* 12, 1909–1963. doi: 10.5194/gmd-12-1909-2019