



Ontogeny-Specific Skeletal Deformities in Atlantic Haddock Caused by Larval Oil Exposure

Pål A. Olsvik^{1,2*}, Elin Sørhus², Sonnich Meier², Ingrid Torvanger², Maja Thorbjørnsen², Anders Thorsen², Lisbet Sørensen³, Per Gunnar Fjellidal⁴, Ørjan Karlsen², Igo G. Guimaraes⁵ and Kai K. Lie²

¹ Faculty of Biosciences and Aquaculture, Nord University, Bodø, Norway, ² Institute of Marine Research, Bergen, Norway, ³ SINTEF Ocean AS, Trondheim, Norway, ⁴ Institute of Marine Research, Matre, Matredal, Norway, ⁵ Laboratório de Pesquisa em Aquicultura, Universidade Federal de Jataí, Jataí, Brazil

OPEN ACCESS

Edited by:

Roger C. Prince,
Stony Brook Apiary, United States

Reviewed by:

Thomas Parkerton,
EnvSci Consulting, United States
Jianfeng Feng,
Nankai University, China

*Correspondence:

Pål A. Olsvik
pal.a.olsvik@nord.no

Specialty section:

This article was submitted to
Marine Pollution,
a section of the journal
Frontiers in Marine Science

Received: 17 June 2021

Accepted: 27 August 2021

Published: 01 October 2021

Citation:

Olsvik PA, Sørhus E, Meier S, Torvanger I, Thorbjørnsen M, Thorsen A, Sørensen L, Fjellidal PG, Karlsen Ø, Guimaraes IG and Lie KK (2021) Ontogeny-Specific Skeletal Deformities in Atlantic Haddock Caused by Larval Oil Exposure. *Front. Mar. Sci.* 8:726828. doi: 10.3389/fmars.2021.726828

Bone deformities are one of the main effects of crude oil exposure in marine fish larvae. Craniofacial and jaw deformities, if severe enough, may restrict feeding and ultimately kill the developing larvae. This study aimed to examine the impact of dispersed crude oil on bone development in Atlantic haddock (*Melanogrammus aeglefinus*) larvae, a fish species spawning in areas approached for oil and gas exploration in the North Atlantic Ocean. Atlantic haddock larvae were exposed to low (60 µg oil/L), high (600 µg oil/L), or pulsed (0–600, average 60 µg oil/L over time) dispersed crude oil from 0 to 18 days post hatch (dph). Endpoints included survival and growth, bone integrity, and transcriptional parameters, which were assessed during (0–18 dph) and after exposure until the fish reached 8 months of age (243 dph). The results showed that the larvae in the high treatment group had reduction in growth at 2–19, 44, 134, and 243 dph. Craniofacial abnormalities were most severe at 8 and 19 dph. These deformities were not present at 44 dph, possibly because the larvae with deformed jaws failed to feed properly and died. Higher prevalence of spinal deformities was observed in haddocks that survived for 243 dph. Three genes encoding proteins critical for osteoblast function, *sp7*, *postn*, and *col10a1*, were downregulated in the high treatment group larvae. We discuss possible mechanisms of action in the developing larvae after oil exposure. In conclusion, this study shows that larval exposure to oil can potentially have long-term effects on growth and bone integrity in Atlantic haddock.

Keywords: Atlantic haddock, larvae, oil spills, crude oil exposure, bone deformities

INTRODUCTION

Research conducted in the aftermath of major accidental oil spills, such as the 1989 grounding of Exxon Valdez in the Prince William Sound, Alaska, and the 2010 Deepwater Horizon blowout in the Gulf of Mexico, has documented developmental abnormalities in fish larvae exposed to crude oil (Peterson et al., 2003; Rice et al., 2007; Incardona et al., 2013). As verified in laboratory studies, exposure to crude oil or its derivatives, such as polycyclic aromatic hydrocarbons (PAHs), induces craniofacial, jaw, and eye deformities, and spinal curvature, as well as pericardial and yolk-sac edema and reduced growth in fish larvae

(Carls et al., 1999; Incardona et al., 2004; Ingvarsdottir et al., 2012; Incardona and Scholz, 2016; Sørhus et al., 2017; Hansen et al., 2019; Laurel et al., 2019; Lie et al., 2019; Sun et al., 2019; Johann et al., 2020). Morphological alterations in the head skeleton, including the jaw, have been considered as a secondary effect of reduced blood flow or heart failure after crude oil exposure (Incardona et al., 2004, 2013). Developmental abnormalities related to bone formation, therefore, appear to be one of the major impacts of the components in crude oil on fish larvae.

With changing climate and melting sea ice, several Arctic nations have planned to expand oil and gas exploration northward into pristine northern waters. This new use of the marine environment raises competing interests and concerns regarding potential impacts on fisheries. For example, the Barents Sea, an Arctic shelf area north of Norway and Russia, is among the richest fishing grounds and home to the largest stock of Atlantic cod in the world (*Gadus morhua*). Atlantic cod and most of the other major Barents Sea stocks spawn off the coast of Northern Norway, particularly in the area of Lofoten and Vesterålen (Olsen et al., 2010), which constitutes a large spawning area for several species of commercially important fish stocks, such as Atlantic cod, Atlantic haddock (*Melanogrammus aeglefinus*), and Atlantic herring (*Clupea harengus*) (Olsen et al., 2010). Because of environmental concerns, the Lofoten and Vesterålen area has, so far, not been opened to oil exploration by the Norwegian Government (MPE, 2011). However, as oil exploration in the Lofoten and Vesterålen area has been a hotly debated issue, there is a need for more knowledge of the potential impact of major oil spills on early life stages of fish species spawning in this region.

Evidence suggests that the sensitivity to dispersed crude oil during early developmental stages may differ considerably among fish larvae from very similar species. For example, Sørhus et al. (2015) showed that Atlantic haddock embryos were more sensitive to oil exposure than Atlantic cod embryos, two closely related gadoid species, because of the accumulation of dispersed oil micro-droplets, possibly resulting from enhanced uptake of toxic components such as PAHs. The authors suggested that the differential sensitivity to oil arises from dissimilar lamella structure of the chorion, with the Atlantic haddock chorion generally being more adherent than the Atlantic cod chorion (Sørensen et al., 2017). This underlines the need of species-specific knowledge to be able to generate models predicting the potential impact of oil spills on early life stages of fish in vulnerable areas. Although the mechanisms inducing the observed bone abnormalities following crude oil exposure are poorly understood, PAHs are believed to be possible culprits (Carls et al., 1999; Incardona et al., 2004, 2006, 2013). Incardona et al. (2004) demonstrated that an individual PAH might cause skeletal deformities in zebrafish (*Danio rerio*) *in vivo* in a similar fashion as crude oil (Incardona et al., 2005, 2006). However, crude oil is composed of thousands of other compounds that may also contribute to its toxicity (Meador and Nahrgang, 2019). Many chemicals, such as PAHs, are known to induce bone abnormalities in fish larvae (Kingsford and Gray, 1996; Naruse et al., 2002; He et al., 2011; Corrales et al., 2014; Seemann et al., 2015). Environmental contaminants, such as

dioxins, polychlorinated biphenyls (PCBs), and tributyltin can also affect the process of mineralization and cause a weakened skeleton (Hodgson et al., 2008; Carpi et al., 2009; Korkalainen et al., 2009; Herlin et al., 2010; Zhang et al., 2012). While effects on the process of bone metabolism might not lead to deformities directly, a weakened skeleton could make an animal more vulnerable to mechanical damage. In juvenile and adult fish with developed and mineralized vertebrae, there is a close relationship between mineral level and mechanical stiffness and strength (Fjellidal et al., 2006). Bone deformity has, therefore, commonly been considered as an early indicator of adverse effects in environmental studies. Although there are well-documented effects of oil on skeletal malformations in larval fish, there is a lack of studies following fish to later developmental stages.

The goal of this study was to examine the impact of dispersed crude oil on bone development in Atlantic haddock larvae. Atlantic haddock larvae were exposed to crude oil from 0 to 18 days post hatch (dph), and the larvae were analyzed for bone and cartilage integrity at 8 and 19 dph, and fixed at 44 dph. Deformities were also assessed in surviving fish after 8 months. Endpoints included bone staining, x-ray of juvenile fish, and transcriptional analysis of genes involved in bone metabolism by RNA-seq. Based on a previous observation on cod larvae exposed to crude oil (Olsvik et al., 2011), we expected to see an up-regulation in osteoclast-related genes and a down-regulation in osteoblasts-related genes.

MATERIALS AND METHODS

Fish Husbandry and Exposure Experiment

Wild Atlantic haddocks were collected from spawning grounds outside Austevoll, Western Norway, and used as a brood stock at the Austevoll Research Station (IMR). The fish were kept in 7,000-L tanks resembling natural spawning conditions: temperature of 8°C, light cycle of 12:12 light/dark, water flow of 32 L/h, and about $34.7 \pm 0.2\%$ salinity. A detailed description of exposure set up, hatching, feeding, and oil exposure regime has been provided previously by Sørhus et al. (2016). Briefly, fertilized eggs were collected from the tanks and placed in egg incubators at 7°C. At 13 days post fertilization (dpf), embryos were transferred to a total of 16 green PE plastic tanks. Approximately 96,000 eggs were evenly distributed into the 16 tanks, with about 6,000 eggs in each tank. The number of larvae was estimated after hatching to be $5,975 \pm 260$ (mean \pm SD). Starting at 4 days post hatch (dph), the larvae were fed with natural zooplankton, mainly copepod nauplii (*Acartia longiremis*), collected from the saltwater pond system Svartatjern (Sørhus et al., 2015). Due to the life history strategy of haddock, with females spawning a large number of eggs, high mortality is expected in all the treatment groups, including the control.

The experimental setup comprised three treatment groups that were exposed to mechanically dispersed crude oil, and one control with nominal concentrations: low (60 μ g oil/L), pulse (0–600 μ g oil/L), high (600 μ g oil/L), and control (0 μ g oil/L). There were four replicates per treatment. The pulse treatment group was designed to account for the vertical transport of larvae in

and out of areas with high oil concentrations, which is relevant after an acute oil spill. Larvae in the pulse treatment group were exposed to high (600 µg oil/L), pulsating concentrations for 2.4 h every 24 h, and the concentration was decreased close to zero before a new exposure. Over time, they were exposed to the same concentration as the larvae in the low treatment group (60 µg oil/L). The larvae were exposed for 18 days, from 0 to 18 dph, and analyzed for gene expression at 1, 2, 4, 9, 14, and 18 dph, and for bone abnormalities at 8, 19, and 44 dph, and at 243 dph (8 months old). For preservation, the larvae were fixed in 4% paraformaldehyde (PFA) for 2 h, washed once in 70% ethyl alcohol (EtOH), and stored in 70% EtOH until further analysis. The juvenile fish (243 dph) were frozen for x-ray.

The larvae were exposed to a weathered blend of crude oil, containing oil from four different formations in the Heidrun oil field in the Norwegian Sea. These formations contain different types of oil, light paraffinic (0.83 g/ml) and heavy biodegraded (0.93 g/ml), and they are exported as a heavy crude oil (0.89 g/ml). The composition of this Heidrun blend oil is thought to be a representative for the types of oil that may be found in the area of Lofoten and Vesterålen (Sørhus et al., 2015). Due to the fast evaporation process that normally occurs after an offshore oil spill, the oil was artificially weathered by distillation at 250°C to obtain realistic oil for exposure (Sørhus et al., 2015). The weathering procedure is described by Stiver and Mackay (1984). This process corresponds to 2–7 days on the sea surface at 10°C, and the resulting oil has a decreased concentration of naphthalene and, thus, increased concentrations of PAHs with three rings (Sørhus et al., 2015). The principle of the exposure system and procedures for oil droplet generation are described in detail elsewhere (Nordtug et al., 2011; Sørhus et al., 2015). The oil was pumped into the dispersion system using a high-performance liquid chromatography (HPLC) pump (LC-20AD liquid chromatography pump; Shimadzu, Kyoto, Japan) with a flow of 5 µl/min together with a flow of seawater of 180 ml/min. The system generates an oil dispersion with oil droplets in the low µm range with a nominal oil load of 26 mg/L (stock solution). The dose of exposure to the tanks was regulated with a parallel pipeline system with one line of flowing clean seawater and the other line containing a flow of the stock solution. The two pipelines were connected by a three-way magnetic valve, allowing water to be collected from both lines. Different dilutions were made by controlling the relative sampling time from the oil stock solution and clean water. The experimental setup consisted of three treatments and a control, each with four replicates: 60 µg oil/L (low dose), 600 µg oil/L (high dose), 600 µg oil/L for 2.4 h in a 24-h period (pulse dose), and no oil (control).

Analytical Chemistry

Water samples (1 L) were taken from each exposure tank at the beginning of the experiment, preserved by acidification (HCl, pH < 2), and stored at 4°C in the dark until further handling. The PAHs were analyzed as described by Sørhus et al. (2015). Pooled tissue samples of the larvae (100 individuals, ~200–250 mg wet weight) were examined for PAH accumulation by gas chromatography/tandem mass spectrometry (GC-MS/MS)

as described by Sørhus et al. (2016). The body burden results are given as ng PAH/g wet weight. Newly hatched haddock larvae are a very lean fish containing mainly membrane lipid as phospholipids, and the lipid concentration is ~0.8 % of the wet weight (Garcia et al., 2008; Sørensen et al., 2016).

Fluorescence Microscope Measurement

The accumulation of PAH metabolites in the bile of the larvae was recorded at 9 dph (after 9 days of exposure) by PAH-associated blue fluorescence staining using a Nikon AZ100 microscope (Nikon, Tokyo, Japan) equipped with a 4',6'-diamidino-2-phenylindole (DAPI) filter set (peak excitation 330–380 nm; emission > 425 nm) and a Nikon Intensilight C-HGFI fluorescence light source (Nikon, Tokyo, Japan). Pictures were taken using a 2× objective and 1× zoom and a QICAM monochrome camera (Teledyne Photometrics, Tucson, AZ, United States) (1,392 × 1,040 pixels, <http://www.qimaging.com>), and resulted in images with a resolution of 0.237 pixels/µm. The microscope UV-light, camera exposure time and gain factor settings were adjusted to the high exposure groups to avoid oversaturation in the pictures. These factors were then held constant (2 s exposure time, gain 5) for all the images. Emission was estimated using ImageJ (<https://imagej.nih.gov/ij/>); the image of the gallbladder was manually encircled with an ImageJ region of interest (ROI) tool, and then the level of fluorescence was measured as the mean gray value (scale 0–255; 0 = black, 255 = white) of the ROI. If the gallbladder could not be visually detected because of lack of emission, the larvae were given a value of 0.

Bone and Cartilage Staining

To stain the bone and cartilage of Atlantic haddock larvae exposed to crude oil, slight modifications were made from the acid-free staining procedure described by Walker and Kimmel (2007). Optimal staining was achieved by adjustments in the concentration of magnesium chloride (MgCl₂), time of incubation in Alcian blue staining solution, time of incubation in Alizarin red staining solution, and strength of the bleaching solution. Ten larvae (19 dph) from each replicate tank were stained, yielding a total of 150 larvae (one tank was omitted because of increased larval mortality). In addition, a total of 150 juveniles (44 dph) were stained to examine if developmental skeletal abnormalities may appear later in life.

The larvae were transferred to 6-well plates and stained with the replicate groups in separate wells. EtOH was removed before the addition of phosphate-buffered saline (PBS), which was replaced with fresh PBS, for 5–8 min (until the larvae sank to the bottom of the wells). The larvae were further washed in 100 mM Tris pH 7.5/100 mM MgCl₂ for 10 min. Cartilage staining was performed by adding to each well 4 ml of the 0.04% Alcian blue staining solution comprising 100 mM MgCl₂. The larvae were incubated under gentle agitation conditions at room temperature for approximately 2 h. Then, the cartilage staining solution was removed, and the larvae were further washed in three separate steps in a decreasing ethanol concentration (80, 50, and 25%). Bleaching was performed in 0.1% H₂O₂/0% KOH for 2 h. To rinse the bleaching solution out of the wells, the larvae were washed once, and then twice 10–30 min in 25% glycerol/1.1%

KOH. Bone staining was performed in 4 ml 0.01% Alizarin Red under gentle agitation conditions at room temperature for 1 h. The larvae were further destained in 4 ml 50% glycerol/0.1% KOH under constant agitation conditions for 10 min. For further dehydration and preservation, the destaining solution was replaced with a stepwise increase in the concentration of glycerol, 50% glycerol/0.1% KOH for 24 h, 75% glycerol/0.1% for 24 h, and finally 100% glycerol.

The staining protocol was slightly different for 44 dph larvae. The 44 dph larvae were bleached in 0.1% H₂O₂/0.9% KOH for ~5 h until sufficient pigmentation was removed, and 70% dH₂O/30% saturated sodium borate was added to rinse the bleach out of the wells before the addition of 1% trypsin. Time of trypsinization ranged from 12 to 15 h until sufficient transparency was obtained. If necessary, the solution was replaced with fresh 1% trypsin, and 70% dH₂O/30% saturated sodium borate was added again to remove the trypsin solution from the wells. Bones were stained in 0.01% Alizarin under gentle agitation conditions for 75 min at room temperature.

Analysis of Morphology, Growth, and Survival

Pictures of each larva were taken using an Olympus SZX Stereo Microscope (Olympus, Tokyo, Japan) with a Digital Slight Ds-Fi1 camera (Nikon, Tokyo, Japan). The larvae were randomized further before they were analyzed. The treatment groups were compared with control based on bone deformities and irregularities, and image analyses of selected parameters were conducted. The following parameters were measured using ImageJ: standard length (SL) of larvae, length from eye to upper jaw (EJ), and length of Meckel's cartilage (LM) (Figure 1). SL was measured along the notochord, from the posterior end and along the dorsal side until the transition to the head, and further in a straight line to the tip of the upper jaw (Skaalsvik et al., 2015). The measurement of SL at 44 dph was performed on fixed larvae. Furthermore, percent mineralization was divided by the SL of the larvae, allowing for comparison among the larvae regardless of size (Kvalheim, 2010). For the 44 dph larvae, an assessment of skeletal abnormalities, such as vertebral fusion, fusion of neural spines, and deformities in the lower and upper jaws, was also conducted. At two days (20 dph) and two months (76 dph) post exposure stop, larval survival was estimated based on multiple pictures obtained from the experimental tanks. A digital single-lens reflex (SLR) camera (Olympus E-3; Olympus, Tokyo, Japan) with a wide-angle lens (Olympus Zuiko Digital 11–22 mm; Olympus, Tokyo, Japan) was used. Images were taken from directly above. Four tanks (one from control, two from the low treatment, and one from the pulse treatment group) were eliminated because of bacterial growth introduced by start-feeding the larvae with living zooplankton. The four tanks were randomly distributed in the room, and the technical issue was not related to crude oil exposure.

Radiology

The Atlantic haddock were radiographed with a portable X-ray apparatus (Porta 100 HF; Eickemeyer Medizintechnik für Tierärzte KG, Tuttlingen, Germany) and a 35 × 43-cm computed

radiography (CR) image plate (Dürr Medical, Bietigheim-Bissingen, Germany) with 40 kV and 10 mAs and 70 cm distance. The image plate was scanned using CR 35 VETwin (Dürr Medical, Bietigheim-Bissingen, Germany), and the resulting image was converted into a TIFF file using Vet-Exam Plus Software version 4.14.0 (Dürr Medical, Bietigheim-Bissingen, Germany). The software program Adobe Photoshop CS2 was used for the evaluation of vertebral deformities according to the description of Witten and Huysseune (2009); vertebra number and deformity type were assessed for each deformed vertebra. Each fish was assessed for vertebral deformities, and the location and type of deformity were recorded.

RNA Isolation and RNA-Seq Analysis

Total RNA was isolated from frozen larvae using a Trizol reagent (*Invitrogen*, Waltham, MA, United States), followed by the DNase treatment step using a TURBO DNA-free kit (Life Technologies Corporation, Carlsbad, CA, United States). RNA quantity and quality were assessed using a Nanodrop spectrophotometer (NanoDrop Technologies, Wilmington, DE, United States) and the 2100 Bioanalyzer (Agilent Technologies, Sta. Clara, CA, United States). RNA sequencing was performed as described by Sørhus et al. (2017). Briefly, cDNA libraries were generated using the Illumina TruSeq RNA Sample Preparation Kit (Illumina, San Diego, CA, United States). Paired-end libraries were sequenced on an Illumina HiSeq2500 (Illumina, San Diego, CA, United States) platform. The raw data are available from the Sequence Read Archive (SRA) at the National Center for Biotechnology Information (NCBI) (Accession ID: PRJNA328092). In this study, six genes of interest for bone formation (*sp7*, *bglap2*, *postn*, and *col10a1*) and resorption (*ctsk* and *mmp9*) were extracted from the RNA-seq data set and studied in the larvae at 1, 2, 9, 14, and 18 dph.

Statistical Analysis

Statistica version 12 (2013, StatSoft Inc., Tulsa, OK, United States) and Graphpad Prism 9 (2021, GraphPad Software Inc., San Diego, CA, United States) were used for statistical analysis. One-way ANOVA, followed by Dunnett's *post-hoc* test, was performed for analyses of significant differences. Bartlett's test was performed to check for homogeneity of variance, while normality was checked by the D'Agostino-Pearson test. Data that violated Bartlett's test or the D'Agostino-Pearson normality test were log-transformed before testing for significance. If homogeneity in variance was not achieved, the non-parametric analysis Kruskal Wallis test was performed, followed by Dunn's *post-hoc* test. In both the parametric and non-parametric tests, the treatment groups were compared with the control group. A significance level of 0.05 was used for all the tests.

RESULTS

PAH Exposure, Uptake, and *cyp1a* Expression

Water concentrations of total PAH (totPAH) after the exposure was terminated (18 dph) ranged between 0 (control) and 7.6 µg/L (high concentration) (Table 1). Profiles of individual PAH in the

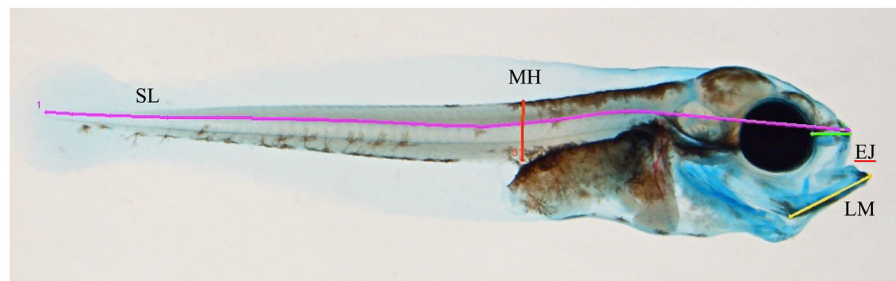


FIGURE 1 | Overview of measured lines in the morphometric analysis. SL, standard length; MH, myotome height; EJ, length from eye to the tip of the upper jaw; LM, length of Meckel's cartilage.

TABLE 1 | Total PAH in water and tissue (wet weight) and *cyp1a* expression at exposure stop (18 dph).

	Treatment			
	Control	Low	Pulse (low) - Pulse (high)	High
Nominal oil concentration ($\mu\text{g oil/L}$)	0	60	0 – 600	600
Total PAH water ($\mu\text{g/L}$)	0.0 ± 0.0 (2)	0.7 ± 0.1 (2)	0.3 ± 0.3 (2) – 6.1 ± 0.5 (2)	7.6 ± 0.7 (2)
Total PAH tissue (ng/g)	6.0 ± 0.4 (3)	83 ± 4 (2)***	63 ± 28 (3)***	941 ± 348 (4)***
Relative <i>cyp1a</i> expression	1.4 ± 0.5 (4)	9.8 ± 1.7 (3)***	7.0 ± 1.4 (4)***	30.4 ± 6.5 (4)***

Pulse (low): concentration in the tanks during period without exposure. Pulse (high): concentration in the tank during the period with exposure (2.4 hours per day). Data are presented as mean \pm SD (N). Statistical differences from control on the log-transformed data for totPAH tissue and *cyp1a* expression were evaluated using one-way ANOVA with Dunnett's multiple comparison test ($p < 0.001 = ***$). Data obtained from Sorhus et al. (2016).

exposure water at 18 dph are shown in **Supplementary Table 1**. The PAH profile in the exposure tanks was dominated by the C0–C3 naphthalene ($\sim 60\%$), followed by tricyclic PAHs, which contributed $\sim 39\%$ of the total PAHs. The PAH pattern in the larvae reflected that of the exposure water. PAH profiles of the larvae at 18 dph are shown in **Supplementary Table 2**. The uptake of totPAH in the tissue (totPAH body burden) was highest in the high concentration, and the uptake was larger in the low treatment (with continuous exposure) compared with the pulsed high concentration (2.4 h per day) exposure. Larval expression of *cyp1a* reflected the total PAH tissue concentrations in the treatment groups (**Table 1**).

Oil compound-associated fluorescence was applied as a measurement for biliary PAH metabolites at 9 dph.

Thirty individuals from each treatment group were scanned for PAH metabolites in the gallbladder. **Supplementary Figure 1** shows representative images of four haddock larvae with biliary PAH metabolites in exposed individuals and measured light intensity in control, low, pulse, and high group individuals. There were a large number of individuals that had zero PAH-associated fluorescence in the control group (67%), and the low (54%) and pulse (58%) groups. In the low and pulse groups, 42 and 38%, respectively, of the individuals had medium or higher PAH-associated fluorescence (**Supplementary Figure 1**). The large majority (97%) of individuals in the high exposure group had high fluorescence, while one larva had intermediate levels.

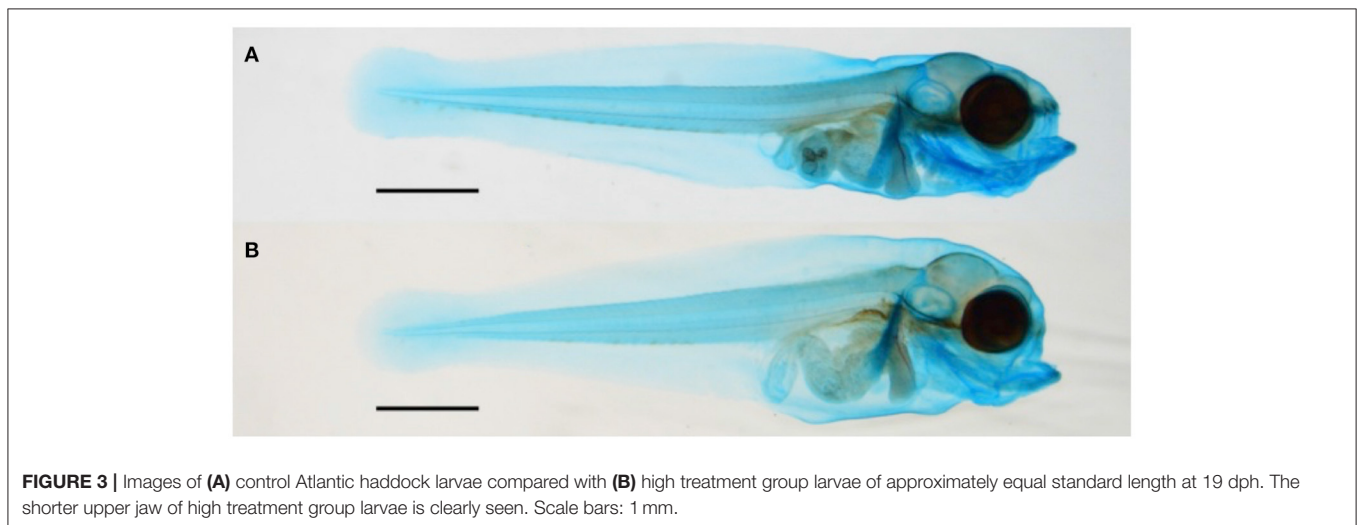
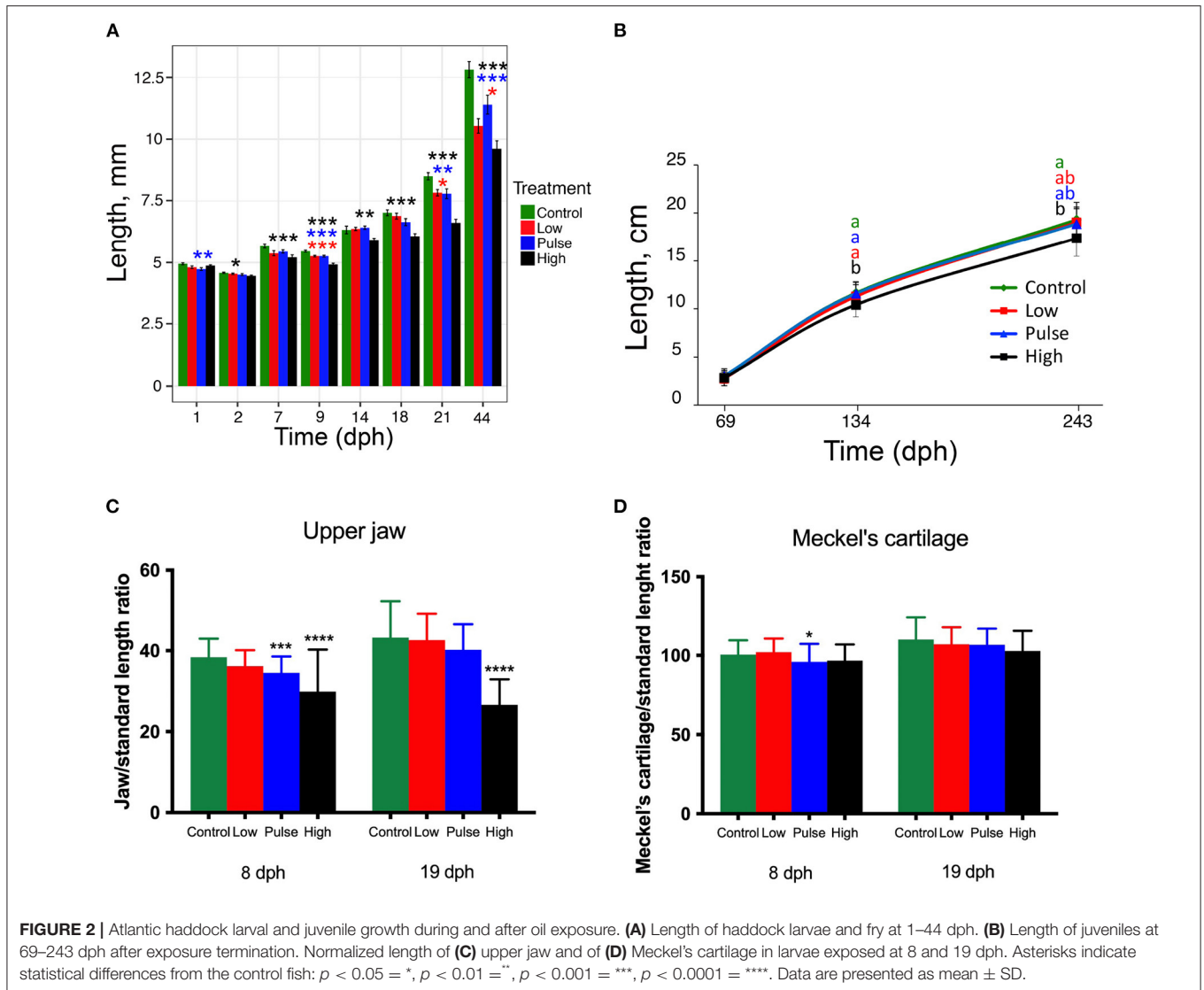
Growth, Morphology, and Skeletal Development

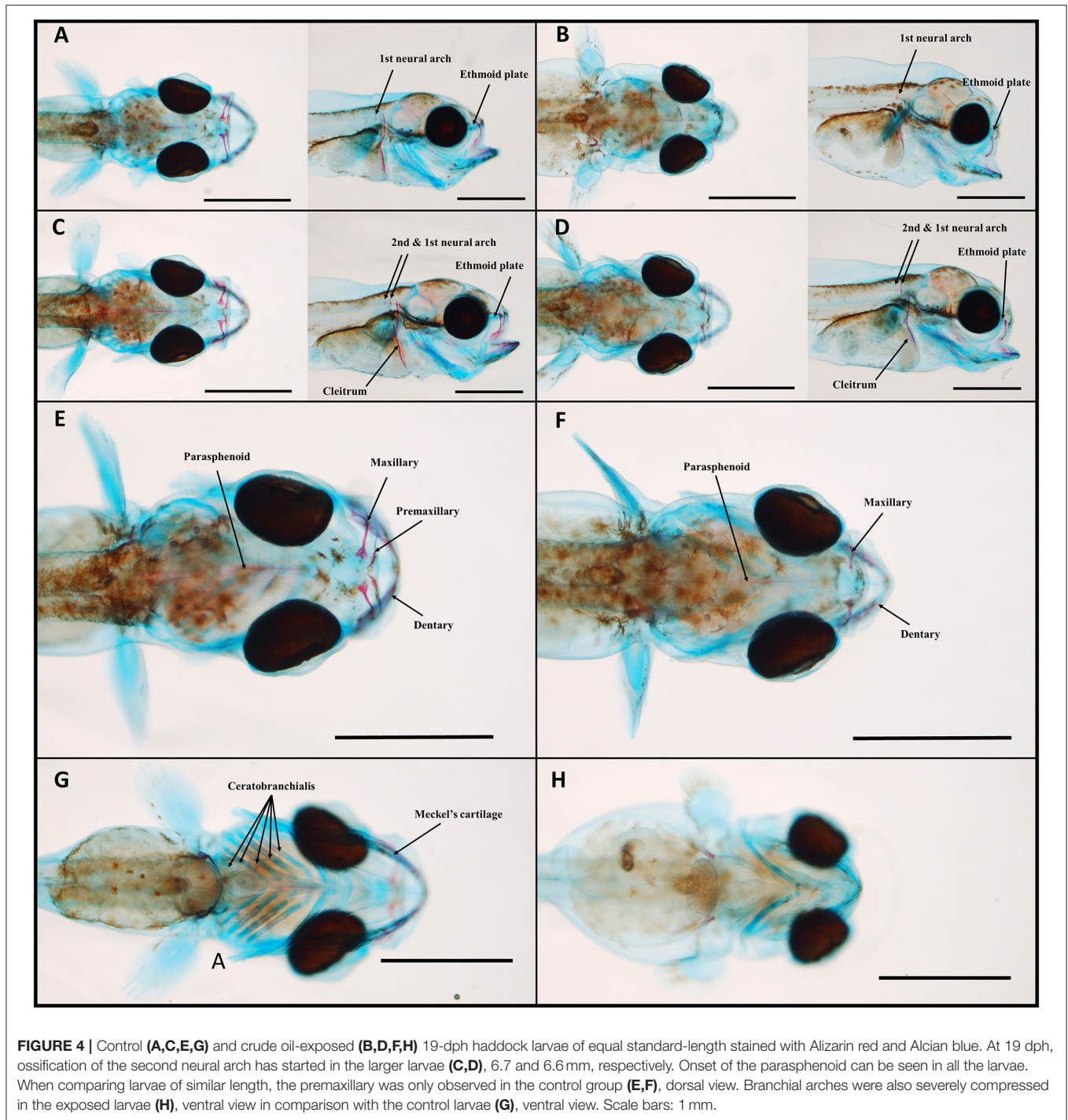
Reduced SL was observed in all the exposure groups (**Figure 2A**). The high concentration showed reduced length at all the time

points evaluated after 1 dph. At 44 dph, the larvae treated with the highest dose showed a 25% reduction in length compared with those in the control group. Larvae from the low and pulse treatment groups showed a 17.8 and 11.1% length reduction, respectively, at 44 dph. The length reduction percentage at 69, 134, and 243 dph between the larvae in the high treatment group and those in the control group were 6.7, 11, and 9.9%, respectively. At juvenile stages (69, 134, and 243 dph), only the high treatment group displayed reduced growth. At 134 dph, the SL of the high concentration larvae was significantly different from all the other treatments including control (**Figure 2B**).

Due to high mortality rate at 44-dph, the number of individual fry analyzed per treatment group differed considerably (**Supplementary Table 3**). Upper jaw and MC lengths, normalized to total larvae length, at 8 and 19 dph are shown in **Figures 2C,D**, respectively. These parameters were not recorded in 44-dph fry. The Atlantic haddock larvae exposed to pulse and high concentrations showed significantly reduced upper jaw length at 8 dph (**Figure 2C**, $p < 0.001$ and $p < 0.0001$, respectively), whereas significantly reduced upper jaw length was only observed for the high exposure concentration at 19 dph (**Figure 2C**, $p < 0.0001$). For the length of MC, oil exposure had a less profound effect (**Figure 2D**). Significantly reduced MC length was only observed in the larvae exposed to pulse concentration at 8 dph (**Figure 2D**, $p < 0.05$).

Two days post exposure (at 20 dph), no significant differences in mortality were observed between the treatment groups and control (**Supplementary Figure 2A**). Two months later, at the juvenile stage (76 dph), the larvae exposed to high concentration had a survival rate of $< 3\%$ as



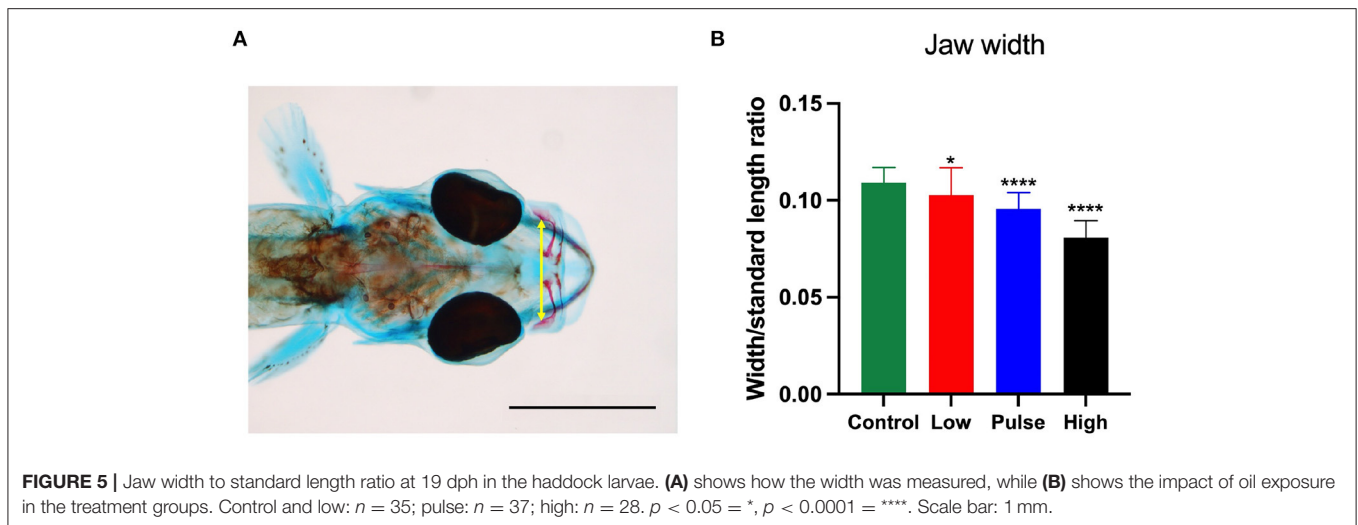


opposed to the 10–14% rate of those in the other treatment groups. However, due to bacterial growth followed by variation in survival in some of the replicate tanks, this observation was not statistically different from control (Supplementary Figure 2B).

At 19 dph, the most prominent effect of crude oil exposure on larvae mineralization was seen in the high treatment group. Figure 3 shows two typical larvae of approximately equal

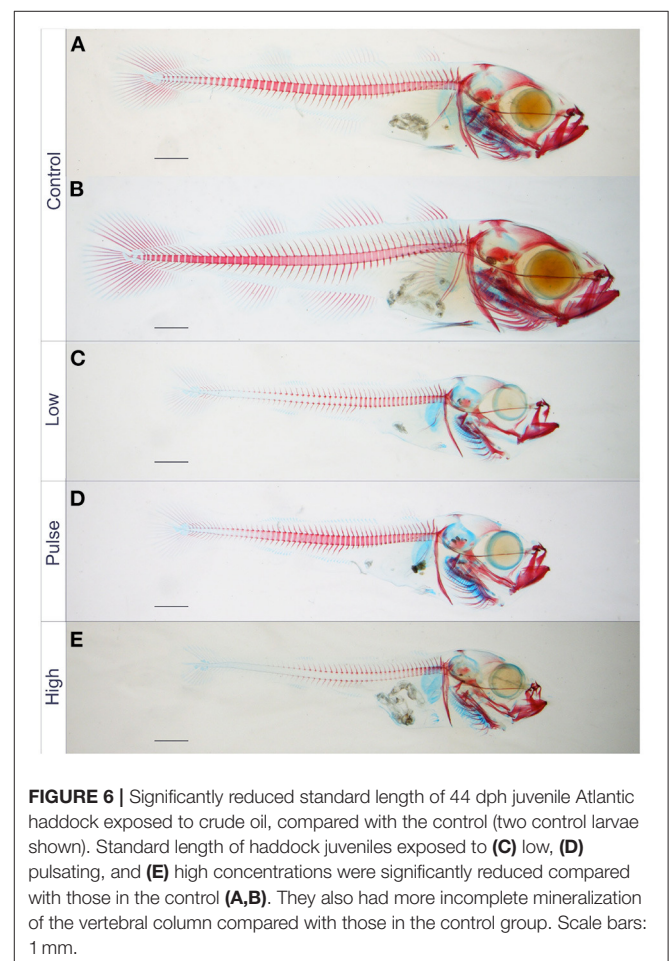
standard length from the control (Figure 3A) and high treatment (Figure 3B) groups.

Compared with the control larvae, crude oil exposure typically reduced upper jaw size of the high treatment group larvae. Furthermore, the larvae in the high treatment group often showed morphological changes in the overall craniofacial skeleton. The exposed larvae had a stumped/compressed craniofacial morphology and lacked the normal curvature



observed in the control larvae (**Figure 3**). In addition to reduced SL and shorter upper jaw (**Figures 3, 4**), these larvae also had weaker mineralization of the maxillary in the upper jaw. Compared with most of the control larvae (95%), the premaxilla was not observed in any of the exposed animals from the high treatment group, also when compared with larvae of equal length (**Figures 4A–F**). Despite the lack of the premaxillary in the high group, other skeletal features, such as the 1st and 2nd neural arch and the parasphenoid, were mineralized in a similar fashion in all the experimental groups. The compressed craniofacial features in the high treatment group also led to severely compressed gill arches (ceratobranchialis), with thinner and overlapping ceratobranchial arches observed from the ventral side (**Figures 4G,H**). These abnormalities observed in the craniofacial skeleton in the high exposure larvae were not observed in the low and pulse-exposed larvae. The larvae with craniofacial compressions also had a markedly narrow jaw. The overall jaw width was also significantly reduced in all the exposed animals when normalized for standard length (**Figure 5**).

Figure 6 shows the skeleton of a typical set of Atlantic haddock at 44 dph. Fry from all three groups exposed to crude oil showed reduced standard length, an overall trend toward incomplete ossification of the cartilage template in the craniofacial skeleton, as well as incomplete ossification of the notochord. No major skeletal deformities in the vertebral column were observed at 44 dph. Also, the Alizarin red staining did not disclose any abnormalities in the vertebral column, such as irregular, compressed, or joined vertebral bodies, in 44-dph haddock fry exposed to dispersed crude oil. However, an increased incidence of split neural arches was observed in the exposed animals (**Table 2**; **Supplementary Figure 3**). As seen in individuals from the pulse treatment group, which displayed a split, double neural arch on cordacentra numbers 13 and 16 (**Figure 6D**), minor irregularities were observed in some of the exposed fish.



Long-term Effect on Vertebra Deformities

To further evaluate the phenotypic impact of early life crude oil exposure, surviving adult Atlantic haddocks were examined for

bone deformities by X-ray. In total, 97 fish survived and lived to reach the juvenile stage. **Table 3** shows the percentage of bone deformities in the surviving Atlantic haddocks. Of note, relatively few fish from the high treatment group survived this stage, explaining the lower number of examined fish from this group. Typical vertebra deformities in the high treatment group fish are shown in **Figure 7**, where vertebra compression combined with lordosis was the most prominent phenotype among the deformed individuals.

Transcription of Bone-Associated Genes

Mechanisms associated with bone formations are tightly regulated in animals. In cod larvae exposed to oil, we have previously seen the downregulation of genes encoding osteoblast-associated proteins and the upregulation of genes encoding osteoclast proteins. Four osteoblast-associated and two osteoclast-associated genes were, therefore, examined in detail in this study. Of the osteoblast-genes, three were lower expressed in the oil-exposed larvae in this study. The expression of *Sp7*, a zinc finger transcription factor expressed in osteoblasts and required for bone formation (osterix), was significantly lower in the high exposure group compared with the control group at 14 dph (ANOVA, with Dunnett's *post-hoc* test, **Figure 8A**). The expression of *Postn*, which encodes a secreted extracellular matrix protein expressed in collagen-rich tissues (periostin), was significantly lower in the high exposure group compared with the control group at 9, 14, and 18 dph (**Figure 8C**). The expression of *Col10A1* (collagen, type X, alpha 1), a marker for maturing chondrocytes expressed during skeletal development, was significantly lower in the low exposure group compared with the control group at 2 and 9 dph, in the pulse exposure group compared with the control group at 9 dph, and in the high exposure group compared with the control group at 2, 9, 14, and 18 dph (**Figure 8D**). In contrast, the expression of *bglap2* (ostocalcin), which is among the most abundant bone protein genes and is involved in calcium binding and mineralization, was significantly higher in the low exposure larvae at 18 dph (**Figure 8B**). Taken together and except the *bglap2* result, oil exposure during early larval development seems to have an inhibitory effect on the transcription of bone formation genes in the Atlantic haddocks.

For the two studied osteoclast-associated genes, the general pattern was less clear. The expression of *Ctsk* (cathepsin K) (**Figure 8E**), encoding a lysosomal cysteine proteinase involved in bone remodeling and resorption, was significantly higher in the pulse treatment group compared to the control group at 2 dph, but otherwise did not show any differential expression during development after oil exposure, and neither did *mmp9* (**Figure 8F**), which encodes matrix metalloproteinase 9, a zinc-dependent protein involved in the breakdown of the extracellular matrix. The transcriptional results from this study, thus, seem to verify a general pattern of oil-induced downregulation of bone formation genes in early life stages of Atlantic haddock, but the impact of oil on bone resorption genes was less pronounced.

TABLE 2 | Incidence of split neural arches in 44 dph Atlantic haddock fry following crude oil exposure.

Treatment	(n)	Split neural arch	% Deformity
Control	36	6	17
Low	22	13	59
Pulse	23	9	39
High	30	23	77

A typical split neural arch in 44 dph Atlantic haddock fry stained with Alizarin red and Alcian blue can be seen in **Supplementary Figure 2**.

TABLE 3 | Deformities in juvenile Atlantic haddocks surviving early life stage exposure to crude oil.

Treatment	(n)	Deformed	% Deformity
Control	30	1	3
Low	24	2	8
Pulse	28	0	0
High	15	4	27

The fish were evaluated for deformities when their weight was about 65–87 g (8 months old).

DISCUSSION

Main Findings

This study examined the effect of dispersed crude oil on skeletal development in post-hatch larval stages of haddock and in surviving fry and juveniles. The most severe cases of malformations at 8 and 19 dph in the Atlantic haddock larvae exposed to weathered oil from 0 to 18 dph were craniofacial abnormalities. At 44 dph, most of the craniofacial abnormalities were gone. Larvae with major craniofacial abnormalities will have problems with feeding, accordingly, and most of them died before they reached 1.5 months of age. Both during the exposure and after being moved to clean water, the larvae treated with the high concentration showed reduced growth. A slight reduction in the increase in the prevalence of bone deformities was also observed in surviving juveniles exposed to the high concentration at 8 months of age. While high control mortality limits definitive conclusions, craniofacial abnormalities that are induced by oil exposure during the first weeks after hatch cause latent mortality and/or reduced growth due to reduced feeding ability. Further research is needed to confirm these results and translate effects reported under defined lab oil exposures investigated in toxicity tests to simulated field exposures of accidental releases of crude oil near spawning grounds of Atlantic haddock to quantify the ecological implications.

Fluorescence detection is a highly sensitive method to document exposure to aromatic compounds like PAHs (Hornung et al., 2004, 2007) and oil (Gonzalez-Doncel et al., 2008; Bui et al., 2012; Sørrhus et al., 2016) in exposed fish embryos and larvae. The detection is not quantitative; however, it gives a good picture of the distribution of the PAH-associated fluorescence, and when performing image analysis, the light intensity can be used to compare the uptake of fluorescence compounds among exposure

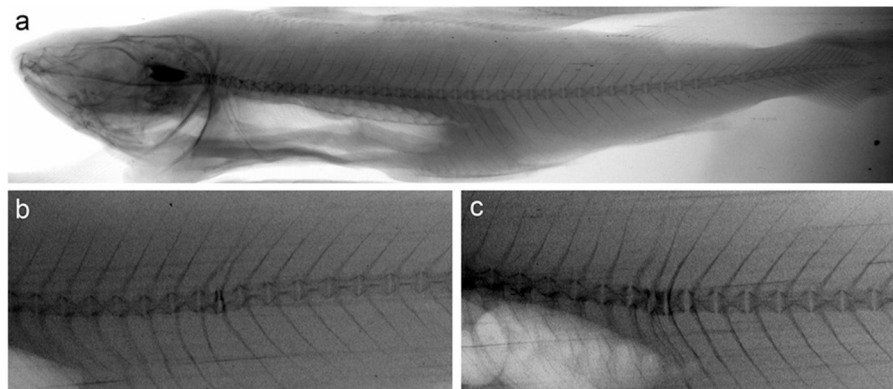


FIGURE 7 | X-ray images of vertebrae of (a) control fish without deformities and (b,c) two fish from the high exposure group with typical deformities. Image (b) shows an individual where two adjacent compressed vertebrae involve a mild lordotic curvature. Image (c) shows an individual where three adjacent compressed vertebrae involve a lordotic curvature.

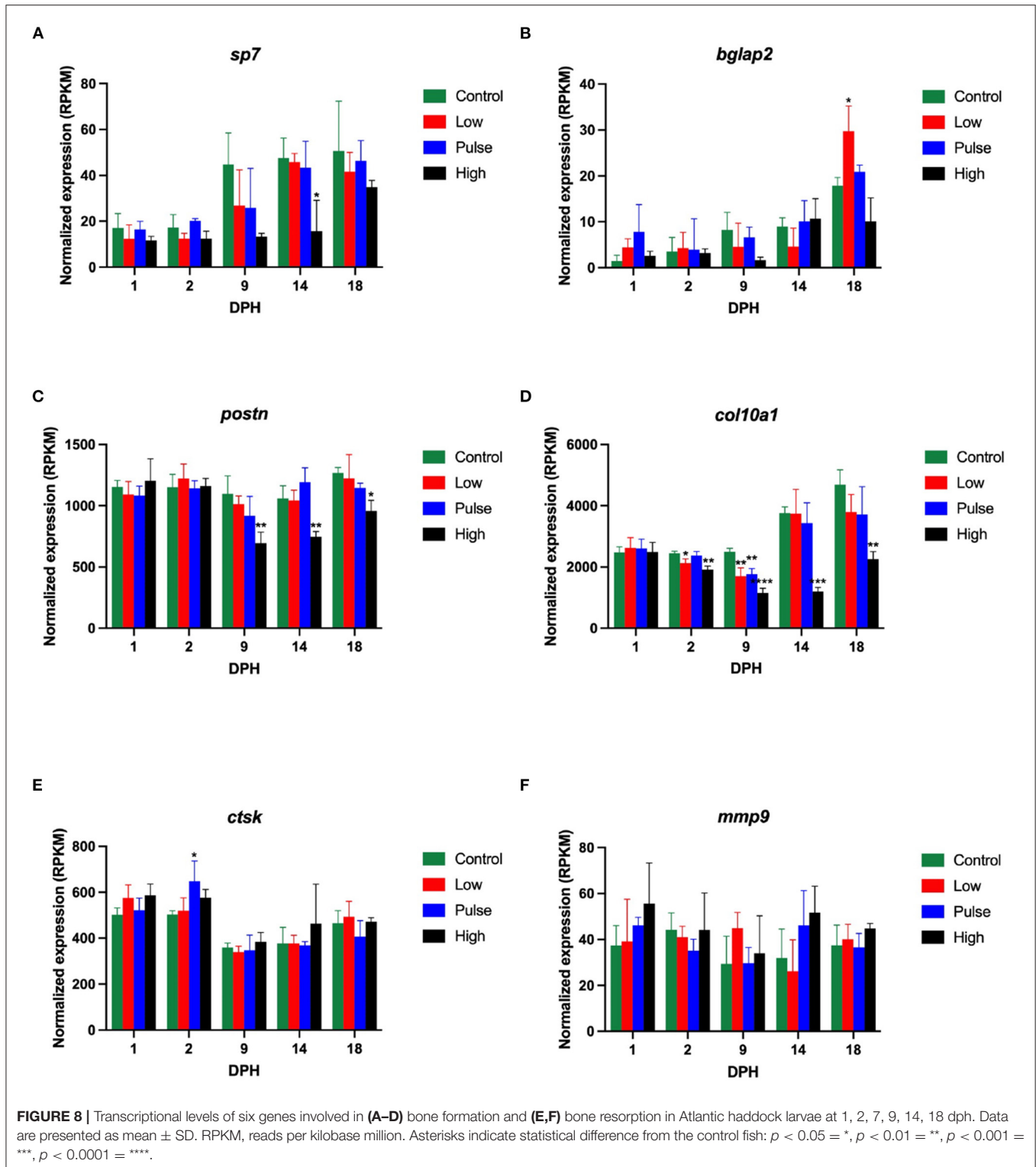
groups. The PAH-associated fluorescence was only observed in the gallbladder, suggesting a high capacity for the haddock larvae to metabolize oil-related PAHs. Other oil exposure studies have also detected the accumulation of PAHs in the yolk sac of medaka (Gonzalez-Doncel et al., 2008) and zebrafish (Bui et al., 2012), but in 9-day-old haddock larvae, most of the yolk are utilized, and there is no indication of high fluorescence in the remaining yolk.

Bone Development

Most studies so far have assessed bone deformities in fish larvae after embryonic oil exposure. Numerous studies have reported jaw deformities in fish larvae after pre-hatch exposure to oil (Carls et al., 1999; Pollino and Holdway, 2002; Incardona et al., 2004; Nokame et al., 2008; He et al., 2011; de Soysa et al., 2012; Shi et al., 2012; Sørhus et al., 2016; Hansen et al., 2019; Perrichon et al., 2021). Incardona et al. (2004) observed a reduction in the size of craniofacial skeletal elements, including the jaw, in zebrafish after phenanthrene or dibenzothiophene exposure. These compounds were, after naphthalene, the most abundant PAHs in the Heidrun blend oil used in this study (Sørhus et al., 2016). Haddock embryos are highly susceptible to oil exposure because of their sticky eggshell (Sørhus et al., 2015; Sørensen et al., 2017). Even short exposures during the embryonic phase resulted in more severe functional and developmental defects (Sørhus et al., 2015, 2016, 2021) compared with larval stages (Sørhus et al., 2016). Especially, exposure during cardiac development caused detrimental craniofacial and cardiac malformations (Sørhus et al., 2021). Similarly, the exposure of Atlantic halibut (*Hippoglossus hippoglossus*) during cardiac development led to more severe jaw abnormalities compared with exposure prior to cardiac development (Perrichon et al., 2021). Jaw deformities have also been reported in fish larvae after post-hatch exposure to crude oil (Ingvarsdottir et al., 2012), and in oil-treated fish larvae after pre- to post-hatch exposure (Solberg et al., 1982; Tilseth et al., 1984). Although exposure in late embryonic stages and early larval stages resulted in less abnormalities compared with the early embryonic phase,

craniofacial deformities were frequent traits (Sørhus et al., 2016, 2021). Here, we document the acute and long-term effects on cartilage formation, bone mineralization, and growth after exposure post hatch. As expected, the craniofacial abnormalities were most pronounced in the high group with reduced upper jaw length, reduced jaw width, compressed craniofacial features, increased incidence of neural arch abnormalities, and lack of premaxilla in 19 dph larvae. We have previously established SL, as opposed to dph, as the most important factor determining the development and sequence of skeletal ossification (Saele et al., 2017). Thus, normalization according to SL, as applied in this study, takes into account different developmental stages at the time of measurement. While the general reduction in skeletal mineralization in the exposed groups was probably related to size and developmental stage, the lack of premaxilla in the high group was not. This indicates an unsynchronized delay of jaw development either through patterning or disruption of mineralization. While endochondral bone structures (lower jaw and gill arches etc.) are ossified cartilages, maxillary structures are dermal bones ossified at onset. The disruption of the ossification process is also supported by the observed reduced expression of the key osteoblast specific transcription factor *sp7* involved in osteoblast differentiation and activity (Lian et al., 2006).

Subtle defects on jaw structures might impact the possibility of long-term survival in the wild. A compressed and narrower jaw, in addition to lack of premaxilla as observed in the crude oil-exposed larvae, would also impact the selection of prey size and feeding success. Exposure during early larval stages is less lethal compared with embryonic exposure. The lower sensitivity of larvae compared with embryos reflects their increased ability to metabolize unwanted substances. Nevertheless, the severity of jaw deformities reported in haddock larvae after pre-hatch exposure in this study documents that fish larvae are vulnerable to oil throughout the early life stages. Tilseth et al. (1984) registered reduced food intake along with jaw malformations and reduced SL of Atlantic cod exposed to 0.25 ppm (250 µg oil/L) of water-soluble fractions of crude oil from 10 to 14 dph



(21 days). Carls et al. (1999) found that reduced lower jaw size affected swimming ability in Pacific herring, which, again, will affect the ability to capture prey. After spinal defects, reduced lower jaw size was the second most important factor influencing swimming ability. Reduced food intake due to a deformed jaw

can have long-term adverse effects. For example, embryonic exposure to oil resulted in altered lipid content and growth impairment in juvenile polar cod (*Boreogadus saida*) (Laurel et al., 2019). In Atlantic cod, we have seen previously that the exposure of first-feeding larvae (9 to 13 dph) to dispersed oil

has resulted in similar transcriptional and metabolic responses as food deprivation (Hansen et al., 2016). Thus, the reduction in SL observed in this study may be a result of reduced food intake due to jaw deformities. However, other factors may also affect SL, such as changes in metabolic rate, or morphological changes, such as yolk sac edema and heart defects, which might affect swimming ability and inhibit prey capture (Carls, 1987; Carls et al., 1999; Incardona et al., 2004, 2014).

Carls et al. (1999) observed that Pacific herring larvae exposed to weathered oil were generally smaller and more immature compared with unexposed larvae. No effect of oil exposure was observed on bone density and bone repartition in adult European bass (*Dicentrarchus labrax*), but bone mineralization of the vertebrae decreased in a reversible way in exposed fish (Danion et al., 2011). The authors suggested that vertebral bone mineralization could be used as an early stress indicator of PAH pollution in sea bass. Vertebral malformation was also observed in juvenile haddock after a 2-month dietary exposure to produced water, oil, and heavy PAHs (Meier et al., 2020).

Larvae with reduced growth may recover and grow normally, but not many studies have examined recovery after oil exposure. Decreased growth rate due to abnormal jaw development may affect larval survival and, ultimately, population dynamics (Ingvarsdottir et al., 2012). In this study, the larvae were afforded the opportunity to recover from 18 to 44 dph (26 days). At 44 dph, all the exposed larvae had a significantly shorter SL than the larvae in the control group. In addition, at 44 dph, the vertebral column and craniofacial skeleton of haddocks in all the treatment groups were not fully mineralized. This contrasted with the vertebral column of most haddock in the control group, which was very close to or fully mineralized at 44 dph. Considering the differences in SL, incomplete ossification in the three exposure groups was most likely a result of restricted growth rate rather than a direct effect on processes involved in mineralization and bone development. A malformed notochord will result in an abnormal vertebral column (Grotmol et al., 2005). However, no consistent malformations in the notochord were observed in the exposed haddock larvae at 19 dph, and no malformations in the vertebral column were observed at 44 dph other than split spinal arches. Still, a higher prevalence of spinal deformities was observed in the haddocks after 8 months, possibly a long-term effect of slower mineralization in the individuals exposed to crude oil.

In adult fish, skeletal deformities can impact physiological processes such as swimming, reproduction, growth, resistance to disease, and susceptibility to predation (Eissa et al., 2021). In this study, lordosis was observed among the surviving fish from the high exposure group. This type of deformity has been observed earlier, both in wild haddocks (Jawad et al., 2018) and cultured haddocks fed with a phosphorous-deficient diet (Roy et al., 2002). Lordosis development in gadoids starts with vertebra compression, and then more deformed vertebrae aggravate the deformity as the curvature increases, where some of the adjacent compressed vertebrae ultimately fuse (Fjelldal et al., 2009). The currently observed lordosis is mild and involves compressed vertebrae, suggesting an early stage of lordosis. In Atlantic salmon, low vertebral bone mineral

content reduces the mechanical stiffness and strength of the vertebra (Fjelldal et al., 2006), and results in compression of the vertebra (Fjelldal et al., 2007). Whether oil exposure during early life stages in fish has long-term negative effects on bone mineralization remains to be elucidated. However, in a previous study, Atlantic cod given a bad nutritional start displayed an increased incidence of vertebral malformations later that were not observed at earlier time points during mineralization of the vertebra (Saele et al., 2017), similar to this study. Other studies have also shown a lack of compensatory growth in cod given a nutritionally insufficient diet (Øie et al., 2015).

Reduced survival, asymmetric head shape, and SL were observed in Atlantic herring 8 weeks after a 12-day larval exposure (15–750 µg oil/L) (Ingvarsdottir et al., 2012). In contrast, the abnormal upper jaw and the overall less organized and defined structure of the craniofacial skeleton observed in the high treatment group at 19 dph were not observed at 44 dph in this study. Furthermore, the split neural arches observed at 44 dph were not visible in the 8-month-old haddocks following x-ray analysis. There may be three possible reasons for this: (i) larvae with the most severe jaw deformities died, (ii) they had arrested growth of the jaw, which they managed to recover from, but the growth continued, (iii) they were more immature compared with the unexposed control (retarded development). The latter reason is implausible because development was adjusted for length. When comparing the 19-dph control larvae with the high treatment larvae of approximately equal length, the shorter upper jaw was still present. Since bone growth is a continuous remodeling process throughout development, larvae with reduced jaws might later recover their ability to feed (Carls et al., 1999), so reason ii is possible. Most likely, larvae with the most severe jaw deformities died; however, further data are needed to confirm the significance and magnitude of long-term latent effects on juvenile survival, growth, and bone-related developmental effects. The Exxon Valdez oil spill overlapped with the Pacific herring spawning period, and field studies that examined the short-term effect on early life stages of herring larvae showed abnormalities such as reduced growth, low larval weight, and craniofacial and jaw deformities (Pollino and Holdway, 2002). However, the level of deformities observed in larval Pacific herring populations decreased over time, suggesting premature death in the most severe cases or alternatively potential reversibility of abnormalities (Carls et al., 1999). Decreased feeding capacity and survival, over time, have also been observed in zebrafish with craniofacial abnormalities after TCDD exposure during the embryonic stage (Chollett et al., 2014). Taken together, the result presented here is in line with the field observation of Pacific herring after the Exxon Valdez oil spill and suggests that fish larvae with severe jaw deformities will not survive during recovery.

The abnormalities observed in the high treatment group larvae were more pronounced than in the low and pulse treatment group larvae. Over time, the larvae in the low and pulse treatment groups were exposed to the same concentrations (60 µg oil/L), but the peak concentration in the pulse dose treatment

was 10 times higher (600 $\mu\text{g oil/L}$). However, at 19 dph there were no significant differences in normalized upper jaw and Meckel's cartilage length between the larvae in the low and pulse treatment groups and those in the control group (although the low and pulse treatment group larvae were shorter). This result indicates that 18-day chronic pulse exposure with a mean measured TPAH exposure of 3.2 ppb exhibits similar effects when compared with 18-day continuous oil exposure corresponding to 0.7 ppb (low concentration, see **Table 1**). A pulsed exposure scenario may be more environmentally relevant given haddock larval drift in and out of oil-contaminated water plumes following a spill.

Mechanisms of Action

Toxicants affecting bones have been classified into four categories according to the mode of action, activation/inhibition of membrane and/or nuclear receptors, alteration of redox condition, mimicking of bone constituents, and unknown pathways (Fernández et al., 2018). In terms of oil as an osteotoxicant, researchers have mainly focused on high-molecular PAHs and their ability to activate the aryl hydrocarbon receptor (AhR) and impact on downstream target genes, such as *cyp1a*, encoding enzymes catalyzing the metabolism of these compounds. For some PAHs, embryotoxicity is independent of CYP1A induction but is still mediated by AhR (Hodson, 2017). However, despite a lot of recent research studies, the underlying molecular mechanisms of PAH-mediated effects on skeletal development and bone homeostasis are not fully understood. The maintenance of bone size, shape and integrity is a complex process at the molecular, cellular, and tissue levels. To maintain bone homeostasis, a perfect balance between bone deposition (osteogenesis) and bone resorption (osteoclastogenesis) is needed. Chondrocytes and osteoblasts construct and shape the skeleton for maximal resilience, while osteoclast maintains mineral homeostasis by resorbing the extensive surface of mainly cancellous bones (Zaidi, 2007; Witten and Hall, 2015). In our previous study on Atlantic cod larvae exposed to weathered dispersed crude oil (up to 10.4 $\mu\text{g } \sum\text{PAH/L}$) between 9 and 13 dph, we showed that elements in the oil inhibit bone formation and enhance bone resorption mechanisms (Olsvik et al., 2011). In cod larvae exposed to oil, genes associated with osteoblasts, such as *sp7*, *col10a1*, *coll1a1*, *coll1a2*, and *bglap2*, were downregulated, while genes associated with osteoclasts, such as *ctsk*, *mmp9*, and *acp5*, were upregulated. Accordingly, we show that the osteoblast-associated genes *sp7*, *postn*, and *col10a1* were downregulated in oil-exposed haddock larvae. In this study, *ctsk* at 2 dph was the only osteoclast-associated gene with significantly elevated expression. Hansen et al. (2021), however, did not observe any clear patterns of differential expression of osteoblast (*sp7*, *bglap2*)- and osteoclast (*ctsk*)-associated genes in Atlantic cod embryos exposed to water-soluble fractions of fuel oils from 4 to 8 dpf at concentrations ranging from 4.1 to 128.3 $\mu\text{g totPAH/L}$. Thus, it appears that the expression of genes encoding proteins involved in the ossification process is more distinctly affected by oil after larval exposure than after embryonic exposure. Although we did not

see a clear pattern of dose-dependent upregulation of osteoclast-associated genes in the haddocks, activated bone resorption will contribute to skeletal deformities. The reduced expression of osteoblast-associated genes and increased expression of osteoclast-associated genes suggest that components in the oil caused a shift in the balance between formation and degradation favoring the latter.

Numerous studies have documented that various PAHs can inhibit mechanisms associated with bone formation and enhance bone resorption in fish. In Japanese medaka (*Oryzias latipes*), it has been proposed that PAHs, such as benzo(a)pyrene, typically cause perturbed chondroblast and osteoblast differentiation due to differential expression of key genes regulating osteoblast-mediated bone formation, resulting in a defective notochord sheath repair, and rendering the vertebral column more vulnerable to physical damage (Yamaguchi et al., 2020). In rockfish (*Sebastes marmoratus*) exposed to benzo(a)pyrene during embryogenesis, He et al. (2011) suggested that PAHs act by perturbing the proliferation of chondrocytes and impairing the expression of sonic hedgehog pathway genes, leading to disturbed craniofacial formation. Benzo(a)pyrene reduced osteoclast and osteoblast activity in scales of zebrafish and goldfish (*Carassius auratus*) after *ex-vivo* exposure (Torvanger et al., 2018). In rockfish exposed to three PAHs for 6 days after hatch, Li et al. (2011) observed inhibited Na^+/K^+ -ATPase and Ca^{2+} -ATPase activity in a dose-dependent manner in larvae with craniofacial defects. Decreased expression of genes in the calcium signaling pathway has also been shown in haddock larvae exposed to oil (Sørhus et al., 2017). Disturbance of calcium homeostasis can impact the proliferation and differentiation of chondrocytes, as shown in rockfish embryos exposed to tributyltin (Zhang et al., 2012). Furthermore, many studies focusing on cigarette smoking and human stem cells developing into osteoblast have shown that PAHs impact the balance between osteogenesis and osteoclastogenesis. For example, Chen et al. (2020) reported that PAH exposure is associated with increased bone resorption among the general adult population in the United States. Similar results have been reported in human mesenchymal stem cells, cells that can differentiate into osteoblasts, exposed to benzo(a)pyrene, in which the PAH exposure suppressed early and late osteogenic differentiation and down-regulated the expression of runt-related transcription factor 2 (Runx2), osteocalcin and osteopontin (An et al., 2020). The authors suggested that impaired BMP/Smad pathways through AhR regulating BMPRII and Hey1 may be the underlying mechanism for benzo(a)pyrene inhibiting BMP2-induced osteogenic differentiation. There is also evidence that benzo(a)pyrene enhances vitamin D3 catabolism, thereby potentially interrupting bone homeostasis (Matsunawa et al., 2009). Research has also shown that endocrine-disrupting chemicals found in oils, such as alkylphenols, have an impact on the function of osteoclasts by non-estrogenic effects (Hagiwara et al., 2008; Prada et al., 2020). Components in oils could also have an impact on bone homeostasis because of oxidative stress (Zancan et al., 2015). Combining these findings will illustrate clearly that PAHs affect

mechanisms associated with osteoblasts and osteoclasts in fish larvae.

CONCLUSIONS

This study shows that haddock exposed to oil for 18 days at the early larval stage had reduced growth and developed skeletal malformations. After a recovery period of 27 days, the exposed larvae did not show abnormality in the upper jaw and less organized and defined structure of the craniofacial skeleton, suggesting that the larvae with jaw deformities most likely failed to feed properly and died. A slight reduction in growth and a higher percentage of vertebra deformities were observed in surviving juveniles from the high treatment group 8 months after the end of the exposure. Reduced mineralization and inhibition of osteoblast-controlled mechanisms linked to bone formation could, in part, be responsible to the observed negative impacts on skeletal development.

DATA AVAILABILITY STATEMENT

The raw data are available from the Sequence Read Archive (SRA) at NCBI (Accession ID: PRJNA328092).

ETHICS STATEMENT

The animal experiment described in this study was approved by NARA, the governmental Norwegian Animal Research Authority (<http://www.fdu.no/fdu/>, reference number

REFERENCES

- An, L., Shi, Q., Fan, M., Huang, G., Zhu, M., Zhang, M., et al. (2020). Benzo[a]pyrene injures BMP2-induced osteogenic differentiation of mesenchymal stem cells through AhR reducing BMPRII. *Ecotoxicol. Environ. Saf.* 203:110930. doi: 10.1016/j.ecoenv.2020.110930
- Bui, A., Xiao, R., Perveen, Z., Kleinow, K., and Penn, A. (2012). Zebrafish embryos sequester and retain petrochemical combustion products: developmental and transcriptome consequences. *Aquat. Toxicol.* 108, 23–32. doi: 10.1016/j.aquatox.2011.09.025
- Carls, M. G. (1987). Effects of dietary and water-borne oil exposure on larval Pacific herring (*Clupea harengus pallasii*). *Mar. Environ. Res.* 22, 253–270. doi: 10.1016/0141-1136(87)90003-1
- Carls, M. G., Rice, S. D., and Hose, J. E. (1999). Sensitivity of fish embryos to weathered crude oil: part I. Low-level exposure during incubation causes malformations, genetic damage, and mortality in larval Pacific herring (*Clupea pallasii*). *Environ. Toxicol. Chem.* 18, 481–493. doi: 10.1002/etc.5620180317
- Carpi, D., Korkalainen, M., Airoidi, L., Fanelli, R., Hakansson, H., Muhonen, V., et al. (2009). Dioxin-sensitive proteins in differentiating osteoblasts: effects on bone formation *in vitro*. *Toxicol. Sci.* 108, 330–343. doi: 10.1093/toxsci/kfp021
- Chen, Y. Y., Kao, T. W., Wang, C. C., Wu, C. J., Zhou, Y. C., and Chen, W. L. (2020). Association between polycyclic aromatic hydrocarbons exposure and bone turnover in adults. *Eur. J. Endocrinol.* 182, 333–341. doi: 10.1530/EJE-19-0750
- Chollett, D., Perez, K. E., and King-Heiden, T. C. (2014). Embryonic exposure to 2,3,7,8-tetrachlorodibenzo-p-dioxin impairs prey capture by zebrafish larvae. *Environ. Toxicol. Chem.* 33, 784–790. doi: 10.1002/etc.2477
- Corrales, J., Thornton, C., White, M., and Willett, K. L. (2014). Multigenerational effects of benzo[a]pyrene exposure on survival and developmental deformities in zebrafish larvae. *Aquat. Toxicol.* 148, 16–26. doi: 10.1016/j.aquatox.2013.12.028
- 2012/275334-2). All methods were performed in accordance with approved guidelines.

AUTHOR CONTRIBUTIONS

KL and PO designed the research questions. PO wrote the first draft of the manuscript. KL, IT, ES, SM, and PF contributed to the writing of the manuscript. KL, PO, IT, ES, SM, MT, AT, LS, and PF analyzed the data. KL, PO, IT, ES, and IG conducted sampling of the fish. SM, ES, and ØK conducted the main experiment. SM led the main project, designed the exposure study, and obtained funding. All authors contributed to manuscript revision, read, and approved the submitted version.

FUNDING

The research reported in this study was financially supported by the Norwegian Research Council (Grant Nos: 234367 and 267820), and by the VISTA Foundation (project no: 6161).

ACKNOWLEDGMENTS

The authors would like to thank Michal Rejmer and Domagoj Maksanare for breeding and managing the fish.

SUPPLEMENTARY MATERIAL

The Supplementary Material for this article can be found online at: <https://www.frontiersin.org/articles/10.3389/fmars.2021.726828/full#supplementary-material>

- Danion, M., Deschamps, M. H., Thomas-Guyon, H., Bado-Nilles, A., Le Floch, S., Quentel, C., et al. (2011). Effect of an experimental oil spill on vertebral bone tissue quality in European sea bass (*Dicentrarchus labrax* L.). *Ecotoxicol. Environ. Saf.* 74, 1888–1895. doi: 10.1016/j.ecoenv.2011.07.027
- de Soysa, T. Y., Ulrich, A., Friedrich, T., Pite, D., Compton, S. L., Ok, D., et al. (2012). Macondo crude oil from the Deepwater Horizon oil spill disrupts specific developmental processes during zebrafish embryogenesis. *BMC Biol.* 10:40. doi: 10.1186/1741-7007-10-40
- Eissa, A. E., Abu-Seida, A. M., Ismail, M. M., Abu-Elala, N. M., and Abdelsalam, M. (2021). A comprehensive overview of the most common skeletal deformities in fish. *Aquacult. Res.* 52, 2391–2402. doi: 10.1111/are.15125
- Fernández, I., Gavaia, P. J., Laizé, V., and Cancela, M. L. (2018). Fish as a model to assess chemical toxicity in bone. *Aquat. Toxicol.* 194, 208–226. doi: 10.1016/j.aquatox.2017.11.015
- Fjelldal, P. G., Lock, E. J., Grotmol, S., Totland, G. K., Nordgarden, U., Flik, G., et al. (2006). Impact of smolt production strategy on vertebral growth and mineralisation during smoltification and the early seawater phase in Atlantic salmon (*Salmo salar* L.). *Aquaculture* 261, 715–728. doi: 10.1016/j.aquaculture.2006.08.008
- Fjelldal, P. G., Nordgarden, U., and Hansen, T. J. (2007). The mineral content affects vertebral morphology in underyearling smolt of Atlantic salmon (*Salmo salar* L.). *Aquaculture* 270, 231–239. doi: 10.1016/j.aquaculture.2007.03.008
- Fjelldal, P. G., van der Meer, T., Jørstad, K. E., and Hansen, T. J. (2009). A radiological study on vertebral deformities in cultured and wild Atlantic cod (*Gadus morhua*, L.). *Aquaculture* 289, 6–12. doi: 10.1016/j.aquaculture.2008.12.025
- Garcia, A. S., Parrish, C. C., Brown, J. A., Johnson, S. C., and Leadbeater, S. (2008). Use of differently enriched rotifers, *Brachionus plicatilis*, during larviculture of haddock, *Melanogrammus aeglefinus*: effects on early growth, survival and body lipid composition. *Aquacult. Nutr.* 14, 431–444. doi: 10.1111/j.1365-2095.2007.00547.x

- Gonzalez-Doncel, M., Gonzalez, L., Fernandez-Torija, C., Navas, J. M., and Tarazona, J. V. (2008). Toxic effects of an oil spill on fish early life stages may not be exclusively associated to PAHs: studies with Prestige oil and medaka (*Oryzias latipes*). *Aquat. Toxicol.* 87, 280–288. doi: 10.1016/j.aquatox.2008.02.013
- Grotmol, S., Kryvi, H., and Totland, G. K. (2005). Deformation of the notochord by pressure from the swim bladder may cause malformation of the vertebral column in cultured Atlantic cod *Gadus morhua* larvae: a case study. *Dis. Aquat. Org.* 65, 121–128. doi: 10.3354/dao065121
- Hagiwara, H., Sugizaki, T., Tsukamoto, Y., Senoh, E., Goto, T., and Ishihara, Y. (2008). Effects of alkylphenols on bone metabolism *in vivo* and *in vitro*. *Toxicol. Lett.* 181, 13–18. doi: 10.1016/j.toxlet.2008.06.863
- Hansen, B. H., Lie, K. K., Størseth, T. R., Nordtug, T., Altin, D., and Olsvik, P. A. (2016). Exposure of first-feeding cod larvae to dispersed crude oil results in similar transcriptional and metabolic responses as food deprivation. *J. Toxicol. Environ. Health A* 79, 558–571. doi: 10.1080/07317131.2016.1171985
- Hansen, B. H., Nordtug, T., Farkas, J., Khan, E. A., Oteri, E., Kvæstad, B., et al. (2021). Toxicity and developmental effects of Arctic fuel oil types on early life stages of Atlantic cod (*Gadus morhua*). *Aquat. Toxicol.* 237:105881. doi: 10.1016/j.aquatox.2021.105881
- Hansen, B. H., Salaberria, I., Read, K. E., Wold, P. A., Hammer, K. M., Olsen, A. J., et al. (2019). Developmental effects in fish embryos exposed to oil dispersions - The impact of crude oil micro-droplets. *Mar. Environ. Res.* 150:104753. doi: 10.1016/j.marenvres.2019.104753
- He, C., Zuo, Z., Shi, X., Li, R., Chen, D., Huang, X., et al. (2011). Effects of benzo(a)pyrene on the skeletal development of *Sebastes marmoratus* embryos and the molecular mechanism involved. *Aquat. Toxicol.* 101, 335–341. doi: 10.1016/j.aquatox.2010.11.008
- Herlin, M., Kalantari, F., Stern, N., Sand, S., Larsson, S., Viluksela, M., et al. (2010). Quantitative characterization of changes in bone geometry, mineral density and biomechanical properties in two rat strains with different Ah-receptor structures after long-term exposure to 2,3,7,8-tetrachlorodibenzo-p-dioxin. *Toxicology* 273, 1–11. doi: 10.1016/j.tox.2010.04.006
- Hodgson, S., Thomas, L., Fattore, E., Lind, P. M., Alfvén, T., Hellström, L., et al. (2008). Bone mineral density changes in relation to environmental PCB exposure. *Environ. Health Perspect.* 116, 1162–1166. doi: 10.1289/ehp.11107
- Hodson, P. V. (2017). The toxicity to fish embryos of PAH in crude and refined oils. *Arch. Environ. Contam. Toxicol.* 73, 12–18. doi: 10.1007/s00244-016-0357-6
- Hornung, M. W., Cook, P. M., Fitzsimmons, P. N., Kuehl, D. W., and Nichols, J. W. (2007). Tissue distribution and metabolism of benzo[a]pyrene in embryonic and larval medaka (*Oryzias latipes*). *Toxicol. Sci.* 100, 393–405. doi: 10.1093/toxsci/kfm231
- Hornung, M. W., Cook, P. M., Flynn, K. M., Lothenbach, D. B., Johnson, R. D., and Nichols, J. W. (2004). Use of multi-photon laser-scanning microscopy to describe the distribution of xenobiotic chemicals in fish early life stages. *Aquat. Toxicol.* 67, 1–11. doi: 10.1016/j.aquatox.2003.11.009
- Incardona, J. P., Carls, M. G., Teraoka, H., Sloan, C. A., Collier, T. K., and Scholz, N. L. (2005). Aryl hydrocarbon receptor-independent toxicity of weathered crude oil during fish development. *Environ. Health Perspect.* 113, 1755–1762. doi: 10.1289/ehp.8230
- Incardona, J. P., Collier, T. K., and Scholz, N. L. (2004). Defects in cardiac function precede morphological abnormalities in fish embryos exposed to polycyclic aromatic hydrocarbons. *Toxicol. Appl. Pharmacol.* 196, 191–205. doi: 10.1016/j.taap.2003.11.026
- Incardona, J. P., Day, H. L., Collier, T. K., and Scholz, N. L. (2006). Developmental toxicity of 4-ring polycyclic aromatic hydrocarbons in zebrafish is differentially dependent on Ah receptor isoforms and hepatic cytochrome P4501A metabolism. *Toxicol. Appl. Pharmacol.* 217, 308–321. doi: 10.1016/j.taap.2006.09.018
- Incardona, J. P., Gardner, L. D., Limbo, T. L., Brown, T. L., Esbaugh, A. J., Mager, E. M., et al. (2014). Deepwater Horizon crude oil impacts the developing hearts of large predatory pelagic fish. *Proc. Natl. Acad. Sci. U S A* 111, E1510–E1518. doi: 10.1073/pnas.1320950111
- Incardona, J. P., and Scholz, N. L. (2016). The influence of heart developmental anatomy on cardiotoxicity-based adverse outcome pathways in fish. *Aquat. Toxicol.* 177, 515–525. doi: 10.1016/j.aquatox.2016.06.016
- Incardona, J. P., Swarts, T. L., Edmunds, R. C., Limbo, T. L., Aquilina-Beck, A., Sloan, C. A., et al. (2013). Exxon valdez to deepwater horizon: comparable toxicity of both crude oils to fish early life stages. *Aquat. Toxicol.* 142–143, 303–316. doi: 10.1016/j.aquatox.2013.08.011
- Ingvardsdottir, A., Björkblom, C., Ravagnan, E., Godal, B. F., Arnberg, M., Joachim, D. L., et al. (2012). Effects of different concentrations of crude oil on first feeding larvae of Atlantic herring (*Clupea harengus*). *J. Mar. Syst.* 93, 69–76. doi: 10.1016/j.jmarsys.2011.10.014
- Jawad, L. A., Hansen, T. J., Meier, S., Skjaeraasen, J. E., and Fjelldal, P. G. (2018). Vertebral column deformity in adult wild haddock (*Melanogrammus aeglefinus*). *J. Fish Dis.* 41, 1909–1915. doi: 10.1111/jfd.12903
- Johann, S., Nusser, L., Gossen, M., Hollert, H., and Seiler, T. B. (2020). Differences in biomarker and behavioral responses to native and chemically dispersed crude and refined fossil oils in zebrafish early life stages. *Sci. Total Environ.* 709:136174. doi: 10.1016/j.scitotenv.2019.136174
- Kingsford, M., and Gray, C. A. (1996). "Influence of pollutants and oceanography on abundance and deformities of wild fish larvae," in *Detecting Ecological Impacts: Concepts and Applications in Coastal Habitats*, eds R. J. Schmitt and C. W. Osenberg (New York, NY: Academic Press), 235–252. doi: 10.1016/B978-012627255-0/50014-8
- Korkalainen, M., Kallio, E., Olkku, A., Nelo, K., Ilvesaro, J., Tuukkanen, J., et al. (2009). Dioxins interfere with differentiation of osteoblasts and osteoclasts. *Bone* 44, 1134–1142. doi: 10.1016/j.bone.2009.02.019
- Kvalheim, K. (2010). *Anrikning av rotatorier med essensielle fettsyrer og vitamin A og effekten på beinutvikling i torskelarver (Gadus morhua) (Msc thesis)*. University of Bergen, Bergen, Norway.
- Laurel, B. J., Copeman, L. A., Iseri, P., Spencer, M. L., Hutchinson, G., Nordtug, T., et al. (2019). Embryonic crude oil exposure impairs growth and lipid allocation in a keystone Arctic forage fish. *iScience* 19, 1101–1113. doi: 10.1016/j.isci.2019.08.051
- Li, R., Zuo, Z., Chen, D., He, C., Chen, R., Chen, Y., et al. (2011). Inhibition by polycyclic aromatic hydrocarbons of ATPase activities in *Sebastes marmoratus* larvae: relationship with the development of early life stages. *Mar. Environ. Res.* 71, 86–90. doi: 10.1016/j.marenvres.2010.11.002
- Lian, J. B., Stein, G. S., Javed, A., van Wijnen, A. J., Stein, J. L., Montecino, M., et al. (2006). Networks and hubs for the transcriptional control of osteoblastogenesis. *Rev. Endocr. Metab. Disord.* 7, 1–16. doi: 10.1007/s11154-006-9001-5
- Lie, K. K., Meier, S., Sørhus, E., Edvardsen, R. B., Karlsen, Ø., and Olsvik, P. A. (2019). Offshore crude oil disrupts retinoid signaling and eye development in larval Atlantic haddock. *Front. Mar. Sci.* 6:368. doi: 10.3389/fmars.2019.00368
- Matsunawa, M., Amano, Y., Endo, K., Uno, S., Sakaki, T., Yamada, S., et al. (2009). The aryl hydrocarbon receptor activator benzo[a]pyrene enhances vitamin D3 catabolism in macrophages. *Toxicol. Sci.* 109, 50–58. doi: 10.1093/toxsci/kfp044
- Meador, J. P., and Nahrgang, J. (2019). Characterizing crude oil toxicity to early-life stage fish based on a complex mixture: are we making unsupported assumptions? *Environ. Sci. Technol.* 53, 11080–11092. doi: 10.1021/acs.est.9b02889
- Meier, S., Karlsen, O., Le Goff, J., Sørensen, L., Sørhus, E., Pampanin, D. M., et al. (2020). DNA damage and health effects in juvenile haddock (*Melanogrammus aeglefinus*) exposed to PAHs associated with oil-polluted sediment or produced water. *PLoS ONE* 15:e0240307. doi: 10.1371/journal.pone.0240307
- MPE, The Ministry of Petroleum and Energy (2011). *En næring for framtida - om petroleumsvirksomheten*. Available online at: <https://www.regjeringen.no/contentassets/19da7cee551741b28edae71cc9aae287/no/pdfs/stm201020110028000dddpdfs.pdf> (accessed March 22, 2021).
- Naruse, M., Ishihara, Y., Miyagawa-Tomita, S., Koyama, A., and Hagiwara, H. (2002). 3-methylcholanthrene, which binds to the arylhydrocarbon receptor, inhibits proliferation and differentiation of osteoblasts *in vitro* and ossification *in vivo*. *Endocrinology* 143, 3575–3581. doi: 10.1210/en.2002-220003
- Nokame, H., Kitamura, S.-I., Nakayama, K., Matsuoka, S., Sakaguchi, H., and Murakami, Y. (2008). "Effects of heavy oil on the developing Japanese flounder *Paralichthys olivaceus*, in *Interdisciplinary Studies on Environmental Chemistry. Vol. 1. Biological Responses to Chemical Pollutants*, eds Y. Murakami, K. Nakayama, S. I. Kitamura, H. Iwata, S. Tanabe (Tokyo: Terrapub), 171–178.
- Nordtug, T., Olsen, A. J., Altin, D., Meier, S., Overrein, I., Hansen, B. H., et al. (2011). Method for generating parameterized ecotoxicity data of dispersed oil for use in environmental modelling. *Mar. Pollut. Bull.* 62, 2106–2113. doi: 10.1016/j.marpolbul.2011.07.015

- Øie, G., Galloway, T., Sørøy, M., Holmvaag Hansen, M., Norheim, I. A., Halseth, C. K., et al. (2015). Effect of cultivated copepods (*Acartia tonsa*) in first-feeding of Atlantic cod (*Gadus morhua*) and ballan wrasse (*Labrus bergylla*) larvae. *Aquac. Nutr.* 23, 3–17. doi: 10.1111/anu.12352
- Olsen, E., Aanes, S., Mehl, S., Holst, J. C., Aglen, A., and Gjosæter, H. (2010). Cod, haddock, saithe, herring, and capelin in the Barents Sea and adjacent waters: a review of the biological value of the area. *ICES J. Mar. Sci.* 67, 87–101. doi: 10.1093/icesjms/fsp229
- Olsvik, P. A., Hansen, B. H., Nordtug, T., Moren, M., Holen, E., and Lie, K. K. (2011). Transcriptional evidence for low contribution of oil droplets to acute toxicity from dispersed oil in first feeding Atlantic cod (*Gadus morhua*) larvae. *Comp. Biochem. Physiol. C. Toxicol. Pharmacol.* 154, 333–345. doi: 10.1016/j.cbpc.2011.07.002
- Perrichon, P., Donald, C. E., Sørhus, E., Harboe, T., and Meier, S. (2021). Differential developmental toxicity of crude oil in early life stages of Atlantic halibut (*Hippoglossus hippoglossus*). *Sci. Total Environ.* 770:145349. doi: 10.1016/j.scitotenv.2021.145349
- Peterson, C. H., Rice, S. D., Short, J. W., Esler, D., Bodkin, J. L., Ballachey, B. E., et al. (2003). Long-term ecosystem response to the Exxon Valdez oil spill. *Science* 302, 2082–2086. doi: 10.1126/science.1084282
- Pollino, C. A., and Holdway, D. A. (2002). Toxicity testing of crude oil and related compounds using early life stages of the crimson-spotted rainbowfish (*Melanotaenia fluviatilis*). *Ecotoxicol. Environ. Saf.* 52, 180–189. doi: 10.1006/eesa.2002.2190
- Prada, D., Lopez, G., Solleiro-Villavicencio, H., Garcia-Cuellar, C., and Baccarelli, A. A. (2020). Molecular and cellular mechanisms linking air pollution and bone damage. *Environ. Res.* 185:109465. doi: 10.1016/j.envres.2020.109465
- Rice, S. D., Short, J. W., Carls, M., Moles, A., and Spies, R. B. (2007). “The Exxon Valdez oil spill,” in Long-term ecological change in the northern Gulf of Alaska, R. B. Spies (Amsterdam: Elsevier) 419–520. doi: 10.1016/B978-0-444-52960-2/50006-0
- Roy, P. K., Witten, P. E., Hall, B. K., and Lall, S. P. (2002). Effects of dietary phosphorus on bone growth and mineralisation of vertebrates in haddock (*Melanogrammus aeglefinus* L.). *Fish Physiol. Biochem.* 27, 35–48. doi: 10.1023/B:FISH.0000021778.99011.ee
- Saele, O., Haugen, T., Karlsen, Ø., van der Meeren, T., Baevefjord, G., Hamre, K., et al. (2017). Ossification of Atlantic cod (*Gadus morhua*) - Developmental stages revisited. *Aquaculture* 468, 524–533. doi: 10.1016/j.aquaculture.2016.11.004
- Seemann, F., Peterson, D. R., Witten, P. E., Guo, B.-S., Shanthanagouda, A. H., Ye, R. R., et al. (2015). Insight into the transgenerational effect of benzo[a]pyrene on bone formation in a teleost fish (*Oryzias latipes*). *Comp. Biochem. Physiol. C. Toxicol. Pharmacol.* 178, 60–67. doi: 10.1016/j.cbpc.2015.10.001
- Shi, X., He, C., Zuo, Z., Li, R., Chen, D., Chen, R., et al. (2012). Pyrene exposure influences the craniofacial cartilage development of *Sebastes marmoratus* embryos. *Mar. Environ. Res.* 77, 30–34. doi: 10.1016/j.marenvres.2012.01.003
- Skaalsvik, T. H., Bolla, S. L., Thornqvist, P. O., and Babiak, I. (2015). Quantitative characteristics of Atlantic halibut (*Hippoglossus hippoglossus* L.) egg quality throughout the reproductive season. *Theriogenology* 83, 38–47. doi: 10.1016/j.theriogenology.2014.07.043
- Solberg, T., Tilseth, S., Magnor-Jensen, A., Serigstad, B., and Westrheim, K. (1982). *Effects of Low Levels of Ekofisk Crude Oil on Eggs and Yolk Sac Larvae of Cod (Gadus morhua L.)*. Burnaby, BC: ICES.
- Sørensen, L., Silva, M. S., Booth, A. M., and Meier, S. (2016). Optimization and comparison of miniaturized extraction techniques for PAHs from crude oil exposed Atlantic cod and haddock eggs. *Anal. Bioanal. Chem.* 408, 1023–1032. doi: 10.1007/s00216-015-9225-x
- Sørensen, L., Sørhus, E., Nordtug, T., Incardona, J. P., Linbo, T. L., Giovanetti, L., et al. (2017). Oil droplet fouling and differential toxicokinetics of polycyclic aromatic hydrocarbons in embryos of Atlantic haddock and cod. *PLoS ONE* 12:e0180048. doi: 10.1371/journal.pone.0180048
- Sørhus, E., Donald, C. E., da Silva, D., Thorsen, A., Karlsen, O., and Meier, S. (2021). Untangling mechanisms of crude oil toxicity: Linking gene expression, morphology and PAHs at two developmental stages in a cold-water fish. *Sci. Total Environ.* 757:143896. doi: 10.1016/j.scitotenv.2020.143896
- Sørhus, E., Edvardsen, R. B., Karlsen, O., Nordtug, T., van der Meeren, T., Thorsen, A., et al. (2015). Unexpected interaction with dispersed crude oil droplets drives severe toxicity in Atlantic haddock embryos. *PLoS ONE* 10:e0124376. doi: 10.1371/journal.pone.0124376
- Sørhus, E., Incardona, J. P., Furmanek, T., Goetz, G. W., Scholz, N. L., Meier, S., et al. (2017). Novel adverse outcome pathways revealed by chemical genetics in a developing marine fish. *eLife* 6:e20707. doi: 10.7554/eLife.20707
- Sørhus, E., Incardona, J. P., Karlsen, O., Linbo, T., Sørensen, L., Nordtug, T., et al. (2016). Crude oil exposures reveal roles for intracellular calcium cycling in haddock craniofacial and cardiac development. *Sci. Rep.* 6:31058. doi: 10.1038/srep31058
- Stiver, W., and Mackay, D. (1984). Evaporation rate of spills of hydrocarbons and petroleum mixtures. *Environ. Sci. Technol.* 18, 834–840. doi: 10.1021/es00129a006
- Sun, L., Ruan, J., Lu, M., Chen, M., Dai, Z., and Zuo, Z. (2019). Combined effects of ocean acidification and crude oil pollution on tissue damage and lipid metabolism in embryo-larval development of marine medaka (*Oryzias melastigma*). *Environ. Geochem. Health* 41, 1847–1860. doi: 10.1007/s10653-018-0159-z
- Tilseth, S., Solberg, T. S., and Westrheim, K. (1984). Sublethal effects of the water-soluble fraction of Ekofisk crude oil on the early larval stages of cod (*Gadus morhua* L.). *Mar. Environ. Res.* 11, 1–16. doi: 10.1016/0141-1136(84)90007-2
- Torvanger, I., Metz, J. R., Olsvik, P. A., Sjøteland, L., and Lie, K. K. (2018). Benzo(a)pyrene reduces osteoclast and osteoblast activity in *ex-vivo* scales of zebrafish (*Danio rerio* Hamilton-Buchanan, 1822) and goldfish (*Carassius auratus* Linnaeus, 1758). *J. Appl. Ichthyol.* 34, 431–439. doi: 10.1111/jai.13666
- Walker, M. B., and Kimmel, C. B. (2007). A two-color acid-free cartilage and bone stain for zebrafish larvae. *Biotech. Histochem.* 82, 23–28. doi: 10.1080/10520290701333558
- Witten, P. E., and Hall, B. K. (2015). Teleost skeletal plasticity: modulation, adaptation, and remodelling. *Copeia* 103, 727–739. doi: 10.1643/CG-14-140
- Witten, P. E., and Huysseune, A. (2009). A comparative view on mechanisms and functions of skeletal remodelling in teleost fish, with special emphasis on osteoclasts and their function. *Biol. Rev. Camb. Philo. Soc.* 84, 315–346. doi: 10.1111/j.1469-185X.2009.00077.x
- Yamaguchi, A., Uchida, M., Ishibashi, H., Hirano, M., Ichikawa, N., Arizono, K., et al. (2020). Potential mechanisms underlying embryonic developmental toxicity caused by benzo[a]pyrene in Japanese medaka (*Oryzias latipes*). *Chemosphere* 242:125243. doi: 10.1016/j.chemosphere.2019.125243
- Zaidi, M. (2007). Skeletal remodeling in health and disease. *Nat. Med.* 13, 791–801. doi: 10.1038/nm1593
- Zancan, I., Belleso, S., Costa, R., Salvalaio, M., Stroppiano, M., Hammond, C., et al. (2015). Glucocerebrosidase deficiency in zebrafish affects primary bone ossification through increased oxidative stress and reduced Wnt/beta-catenin signaling. *Hum. Mol. Genet.* 24, 1280–1294. doi: 10.1093/hmg/ddu538
- Zhang, J., Zuo, Z., Sun, P., Wang, H., Yu, A., and Wang, C. (2012). Tributyltin exposure results in craniofacial cartilage defects in rockfish (*Sebastes marmoratus*) embryos. *Mar. Environ. Res.* 77, 6–11. doi: 10.1016/j.marenvres.2011.12.008

Conflict of Interest: The authors declare that the research was conducted in the absence of any commercial or financial relationships that could be construed as a potential conflict of interest.

Publisher’s Note: All claims expressed in this article are solely those of the authors and do not necessarily represent those of their affiliated organizations, or those of the publisher, the editors and the reviewers. Any product that may be evaluated in this article, or claim that may be made by its manufacturer, is not guaranteed or endorsed by the publisher.

Copyright © 2021 Olsvik, Sørhus, Meier, Torvanger, Thorbjørnsen, Thorsen, Sørensen, Fjelldal, Karlsen, Guimaraes and Lie. This is an open-access article distributed under the terms of the Creative Commons Attribution License (CC BY). The use, distribution or reproduction in other forums is permitted, provided the original author(s) and the copyright owner(s) are credited and that the original publication in this journal is cited, in accordance with accepted academic practice. No use, distribution or reproduction is permitted which does not comply with these terms.