



Corrigendum: Bioluminescence in Polynoid Scale Worms (Annelida: Polynoidae)

Gabriela V. Moraes¹, Mary Colleen Hannon², Douglas M. M. Soares³, Cassius V. Stevani³, Anja Schulze² and Anderson G. Oliveira^{1*}

OPEN ACCESS

Approved by:
Frontiers Editorial Office,
Frontiers Media SA, Switzerland

***Correspondence:**
Anderson G. Oliveira
anderson.garbuglio@usp.br

Specialty section:
This article was submitted to
Marine Biology,
a section of the journal
Frontiers in Marine Science

Received: 24 March 2021

Accepted: 24 March 2021

Published: 09 April 2021

Citation:
Moraes GV, Hannon MC,
Soares DMM, Stevani CV, Schulze A
and Oliveira AG (2021) Corrigendum:
Bioluminescence in Polynoid Scale
Worms (Annelida: Polynoidae).
Front. Mar. Sci. 8:684687.
doi: 10.3389/fmars.2021.684687

¹ Departamento de Oceanografia Física, Química e Geológica, Instituto Oceanográfico, Universidade de São Paulo, São Paulo, Brazil, ² Department of Marine Biology, Texas A&M University at Galveston, Galveston, TX, United States, ³ Departamento de Química Fundamental, Instituto de Química, Universidade de São Paulo, São Paulo, Brazil

Keywords: marine annelids, Polynoidae, scale worm, photoprotein, polynoidin

A Corrigendum on

Bioluminescence in Polynoid Scale Worms (Annelida: Polynoidae)

by Moraes, G. V., Hannon, M. C., Soares, D. M. M., Stevani, C. V., Schulze, A., and Oliveira, A. G. (2021). *Front. Mar. Sci.* 8:643197. doi: 10.3389/fmars.2021.643197

In the original article, there was a mistake in **Figure 1** as published. The taxa Hirudinidae, Capitellidae, Nephtyidae, and Opheliidae were misspelled. The corrected **Figure 1** appears below.

The authors apologize for this error and state that this does not change the scientific conclusions of the article in any way. The original article has been updated.

Copyright © 2021 Moraes, Hannon, Soares, Stevani, Schulze and Oliveira. This is an open-access article distributed under the terms of the Creative Commons Attribution License (CC BY). The use, distribution or reproduction in other forums is permitted, provided the original author(s) and the copyright owner(s) are credited and that the original publication in this journal is cited, in accordance with accepted academic practice. No use, distribution or reproduction is permitted which does not comply with these terms.

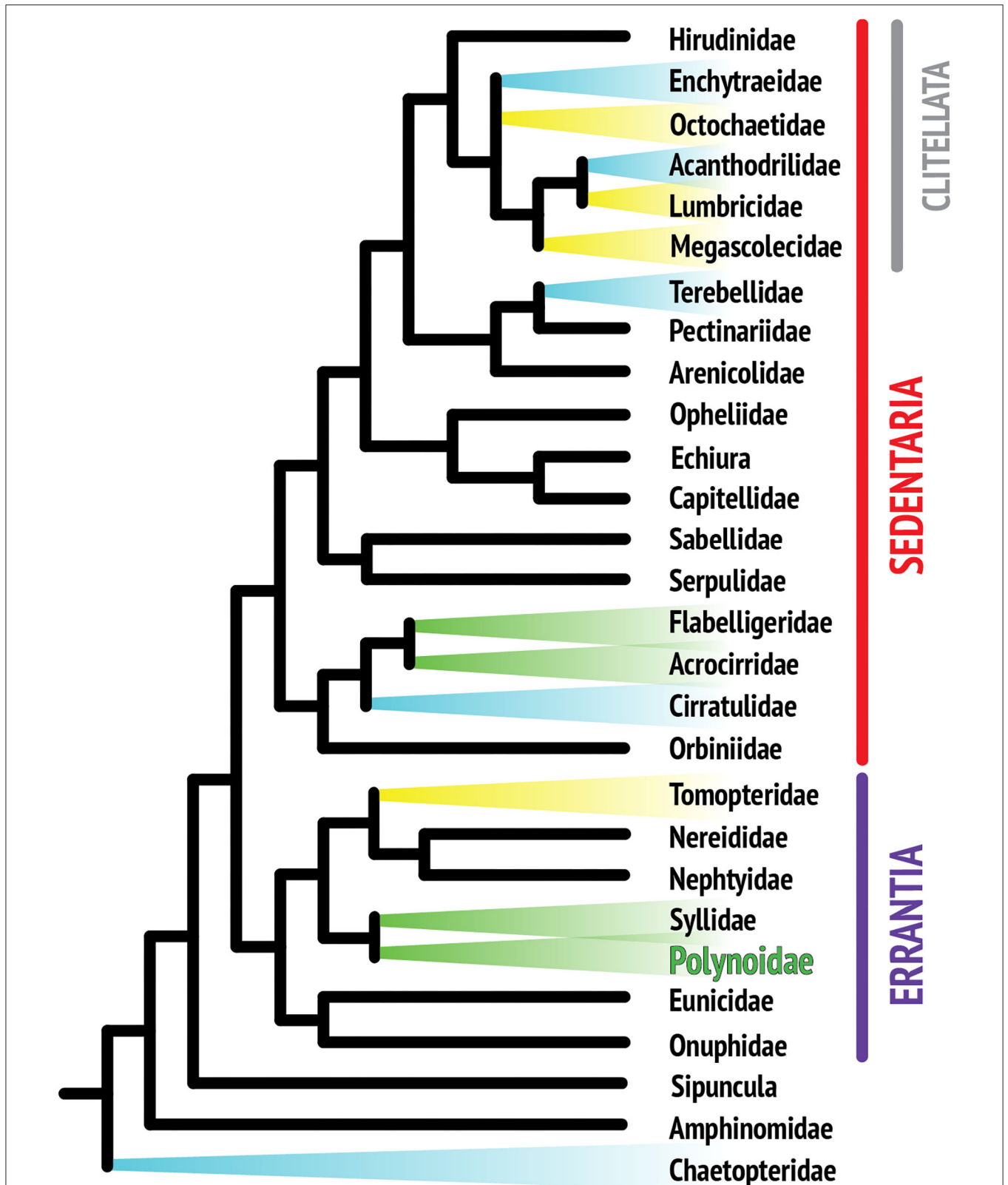


FIGURE 1 | Composite phylogenetic tree of annelid families based on recent phylogenetic and phylogenomic analyses. Note that not all annelid families are represented, as the position of many taxa still remains unresolved. The monophyletic class Clitellata is nested within the paraphyletic polychaetes. Branches highlighted in color indicate families with reported bioluminescent representatives. Colors are indicative of the general color emitted by species within that family.