



# A High Precision Method for Calcium Determination in Seawater Using Ion Chromatography

Hangqi He, Yifan Li, Shuyuan Wang, Qianwei Ma and Yiwen Pan\*

Department of Marine Science, Zhejiang University, Zhoushan, China

## OPEN ACCESS

### Edited by:

Johan Schijf,  
University of Maryland Center  
for Environmental Science (UMCES),  
United States

### Reviewed by:

Zhimian Cao,  
Xiamen University, China  
Mario Lebrato,  
University of California, San Diego,  
United States

### \*Correspondence:

Yiwen Pan  
evelynpan@zju.edu.cn

### Specialty section:

This article was submitted to  
Marine Biogeochemistry,  
a section of the journal  
Frontiers in Marine Science

**Received:** 30 October 2019

**Accepted:** 25 March 2020

**Published:** 17 April 2020

### Citation:

He H, Li Y, Wang S, Ma Q and  
Pan Y (2020) A High Precision  
Method for Calcium Determination  
in Seawater Using Ion  
Chromatography.  
Front. Mar. Sci. 7:231.  
doi: 10.3389/fmars.2020.00231

Calcium ( $\text{Ca}^{2+}$ ) is an important major cation in seawater, which is closely related to the oceanic biogeochemistry cycle. Direct and accurate determination of  $\text{Ca}^{2+}$  concentration is required for a more comprehensive study of the carbonate system in seawater. Due to the high background concentration of  $\text{Ca}^{2+}$  in seawater and small variances of  $\text{Ca}^{2+}$  during  $\text{CaCO}_3$  precipitation and dissolution process, a precision of better than 0.1% (of approximately  $\pm 10 \mu\text{mol/kg}$ ) is very much desired for carbonate chemistry related studies. In this study, a simple, non-toxic and labor-saving technique using ion chromatography (IC) has been developed to determine  $\text{Ca}^{2+}$  in seawater with an overall precision of better than 0.1%. Due to lack of available commercial calcium standard in seawater matrix, IAPSO seawater was selected as the reference after calibration. This proposed method can get a result within 15 min and only requires a small sample volume ( $\sim 1$  ml). The concentrations and flow rates of the eluent have been optimized to achieve the best chromatographic separation (20 mmol/L and 1.0 mL/min were selected in this study). Our work suggests that sample dilutions by weighing have no discernible effect on  $\text{Ca}^{2+}$  determinations. However, the measured  $\text{Ca}^{2+}$  concentration shows a linear decrease with the increasing Mg/Ca ratio in samples, which could be corrected by a derived formula to achieve high accuracy within 0.1%. This optimized method has been applied to the analysis of  $\text{Ca}^{2+}$  distribution in Southwest Indian Ocean and the laboratory study on the calcite precipitation in seawater.

**Keywords:** calcium concentration, seawater, ion chromatography, manual sample injection, high precision, Mg/Ca ratio

## INTRODUCTION

Calcium ( $\text{Ca}^{2+}$ ) is one of the major cations in seawater. Although  $\text{Ca}^{2+}$  concentration ( $[\text{Ca}^{2+}]$ ) in open ocean waters is largely considered as a conservative value with respect to salinity (approximately 10.28 mmol/kg with a salinity of 35), processes including bio- and abio- genic precipitation, carbonate sediment dissolution etc., contribute to the deviations of a constant calcium/salinity ratio.

Calcium is the main component of aragonite and calcite ( $\text{CaCO}_3$ ). The precipitation and dissolution of calcium carbonate is an important component of the oceanic carbon cycle. Recent estimates of both  $\text{CaCO}_3$  production and export at a global ocean scale ( $\sim 175 \times 10^{12}$  mol/year) are roughly at the same order, suggesting relatively high carbon export efficiency in the form

of inorganic carbon (Smith and Mackenzie, 2016). The acidification effects caused by growth in atmospheric CO<sub>2</sub> have certainly reduced the degree of seawater CaCO<sub>3</sub> saturation state ( $\Omega$ ) and thus potentially reduce marine organisms' ability to form calcareous shells (Feely and Chen, 1982; Kleypas et al., 2001; Doney et al., 2009), and have increased the dissolution rate of dead biogenic remains (Andersson and Gledhill, 2013). When 1 mole of CaCO<sub>3</sub> precipitates or dissolves, the corresponding variations of Ca<sup>2+</sup>, dissolved inorganic carbon (DIC) and total alkalinity (TALK) are 1, 1, and 2 moles, respectively. Therefore, Ca<sup>2+</sup>, DIC and TALK could be used to study CaCO<sub>3</sub> precipitation/dissolution if a certain detection precision could be reached.

High quality DIC and TALK data are provided by abundant studies, which form the knowledge base of present estimates of oceanic the CaCO<sub>3</sub> flux (Chung et al., 2003; Feely et al., 2004; Barrett et al., 2014; Smith and Mackenzie, 2016). However, reports of Ca<sup>2+</sup> distribution are less popular than reports of DIC and TALK. Besides, the contribution of dissolved organic matter (DOM) to seawater TALK has been demonstrated in numerous studies (Chung et al., 2003; Feely et al., 2004; Cao and Dai, 2011; Barrett et al., 2014). The nutrients released during DOM decomposition will contribute a potential impact to the titration of seawater TALK, which indicates the potential estimation bias of the CaCO<sub>3</sub> budget using observed TALK and DIC data. Unlike DIC or TALK, which is affected by both organic and inorganic carbon production and consumption, variations of Ca<sup>2+</sup> are almost exclusively controlled by the CaCO<sub>3</sub> precipitation and dissolution when the influence of hydrothermal inputs is ignored. Due to CaCO<sub>3</sub> precipitation and dissolution process, the observed low ratios of calcium/salinity in surface waters and elevated ratios in deep waters have been recognized for a long time in the oceans (Riley and Tongudai, 1967; Chen, 1978; Krumgalz, 1982), and the variation of [Ca<sup>2+</sup>] is ~1% of the total amount in seawater. Thus, accurate quantification of [Ca<sup>2+</sup>] is necessary for looking into the marine CaCO<sub>3</sub> cycle and the advantage is also obvious.

For any analysis method, precision is the degree of proximity of multiple measured values for the same sample, which is an inherent quality of the method itself. Accuracy is the degree of conformity between the measured value and the real value, which is mainly related to the standard used. A high precision is the prerequisite of high accuracy. In the analysis of DIC and TALK, a precision of better than 0.1% (of approximately  $\pm 2 \mu\text{mol/kg}$ ) could be routinely obtained (Sabine et al., 2002; Dickson et al., 2007; Cai et al., 2011). When using the certified Dickson seawater as the reference, the DIC and TALK analysis can achieve a high accuracy within 0.1%. Due to the high background concentration of Ca<sup>2+</sup> in seawater and small variances of Ca<sup>2+</sup> during CaCO<sub>3</sub> precipitation/dissolution process, a precision of better than 0.02% (of approximately  $\pm 2 \mu\text{mol/kg}$ ) for Ca<sup>2+</sup> analysis is required as a similar data precision level of DIC and TALK, which is not realistic at this stage. Considering the limitation, precision of at least better than 0.1% (of approximately  $\pm 10 \mu\text{mol/kg}$ ) is very much desired for carbonate chemistry related studies (Olson and Chen, 1982; Milliman et al., 1999; Jiang et al., 2010; Millero, 2013). Thus, achieving the

required precision (<0.1%) is an important basis for the accurate Ca<sup>2+</sup> analysis. Besides, the lack of commercial calcium standard in seawater matrix is a obstacle for calcium determination in seawater at present.

Over the past decades, complexometric titration has been developed to determine Ca<sup>2+</sup> in seawater with a high precision. Ca<sup>2+</sup> can be selectively titrated with ethylene glycol-bis(2-aminoethylether)-N,N,N',N'-tetraacetic acid (EGTA) in the presence of Mg<sup>2+</sup> (Schmid and Reilley, 1957; Culkun and Cox, 1966; Tsunogai et al., 1968). Ion selective electrodes are incorporated as end-point indicators for achieving a good precision (Whitfield and Leyendekkers, 1969; Hadjiioannou and Papastathopoulous, 1970; Lebel and Poisson, 1976; Kanamori and Ikegami, 1980). Corrections of Mg<sup>2+</sup> and Sr<sup>2+</sup> interferences are also required to get an accuracy of better than 0.1% (Grasshoff et al., 2009). Cao and Dai (2011) modify the classic EGTA titration from Lebel and Poisson (1976) with an amalgamated silver electrode for end-point detection, which achieves a better precision of 0.06%. Despite the high precision of this method, a large amount of toxic mercuric chloride must be added into the sample before titration, which is not friendly to the operator and the environment. Besides, there are some common problems in these titration methods. For example, these methods are laborious and time consuming, meanwhile, a large sample volume (~4 to 25 ml) is always required for a single measurement.

In recent years, ion chromatography (IC) has been developed rapidly. It has many advantages over other analytical methods in speed, selectivity, stability and simultaneous determination ability. The principle of IC is based on the reversible exchange between dissociable ions on the ion exchange column and solute ions with the same charge in the mobile phase. As a result, different components with different affinities are separated by the ion exchanger. Therefore, IC can be applied to the simultaneous separation and determination of common cations in aqueous solutions. There are many reports about the studies of Ca<sup>2+</sup> determination using IC (Thomas et al., 2002; Garcíá-Fernández et al., 2004; Zeng et al., 2006), but the applications are restrained in samples of low ionic strength matrix and low Ca<sup>2+</sup> concentration, such as mineral waters and drinking water. A few studies have reported that both Mg<sup>2+</sup> and Ca<sup>2+</sup> can be simultaneously detected in marine sediment porewaters (Melendez et al., 2013) and samples of high ionic strength matrix (Laikhtman et al., 1998) but with a low precision (1–2%). Thus, the challenge in applying the IC method in complex matrix samples and the low precision are two key factors that restrain its application in accurate Ca<sup>2+</sup> determination in seawater.

In this study, we have described the implementation of an IC method for determining Ca<sup>2+</sup> with required precision (<0.1%) in seawater. The main advantages of this method include all the benefits of IC method: a small sample volume (~1 ml of seawater), elimination of complex sample interferences, and simple analyzing operation. Considering there is no available commercial calcium standard in seawater matrix, the seawater reference from International Association for the Physical Sciences of the Oceans (IAPSO) was selected as the reference for Ca<sup>2+</sup> determination and a high accuracy can be achieved.

The effects of sample dilutions,  $Mg^{2+}$  and  $Sr^{2+}$  on the  $Ca^{2+}$  determinations are investigated as well.

## EXPERIMENT

### Apparatus

A Dionex model ICS-5000 + ion chromatograph (Thermo Fisher) was employed along with a Chromeleon chromatography workstation for instrument control as well as data acquisition and processing in conductivity detection. A Dionex Ion Pac CG 12A (4 mm × 50 mm i.d.) guard column and Dionex Ion Pac CS 12A (4 mm × 250 mm i.d.) separation column were used. The equipped sample loop was 100  $\mu$ L and the eluent was 20 mM Methanesulfonic acid (MSA). In cation chromatography, the ion exchange functional group of resin filled with separation column was sulfonic acid ( $-SO_3^-$ ), and the corresponding eluent was methanesulfonic acid (MSA). After separation, the corresponding signal was obtained by the conductometric method. A Dionex CERS 500 (4 mm) cation self-regenerating suppressor was applied in the system to reduce the background conductivity and thus improved the detection limit. Column oven was set at 30°C for all separations and the conductivity cell was kept at a constant 35°C.

### Reagents and Standards

Preparation of artificial seawater with known  $[Ca^{2+}]$  is a feasible method to obtain the calcium standard, but it will greatly increase the workload and there may be some potential errors in the preparation process due to the different operators. Although IAPSO seawater is a salinity standard, the  $[Ca^{2+}]$  of each individual IAPSO batch is stable. Thus, IAPSO seawater of the same batch can be considered as a stable calcium reference. According to the stoichiometric reference composition of the standard seawater defined by Millero et al. (2008), the average  $[Ca^{2+}]$  calculated in seawater is 10.28 mmol/kg at a salinity of 35 and the corresponding  $Ca^{2+}/Sal$  ratio is 293.7. Due to the preparation on the basis of Atlantic Ocean surface seawater, there is some variations of  $[Ca^{2+}]$  in different batches of the IAPSO seawater. Several studies has reported the  $Ca^{2+}/Sal$  ratio in IAPSO seawater, such as Batch P61 [291.3 (Shiller and Gieskes, 1980)], Batch P79 [290.5 [(Olson and Chen, 1982)], and Batch P147 [292.3 (Cao and Dai, 2011)]. The  $Ca^{2+}/Sal$  ratios of different batches show a range of as much as 0.3–1%, which is well outside the desired accuracy. Therefore, the calibration of IAPSO seawater is necessary. After calibration by a known  $Ca^{2+}$  standard or the other measurement methods (such as complexometric titration method), IAPSO seawater of the same batch can be used as the calcium standard. However, this means that every lab would have to resort to calibrating their own batch of IAPSO seawater using a secondary method that they might not be familiar with. Besides, the accuracy of this method essentially relies entirely on the calibration result, which may be the main limitation of this method.

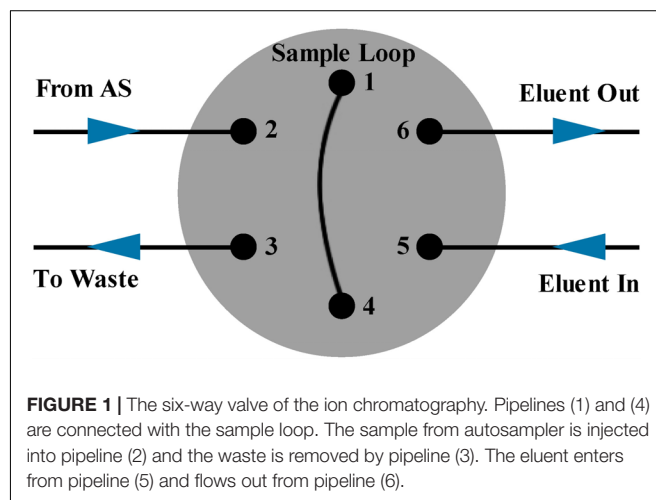
In this study, the Batch P162 of IAPSO seawater (salinity = 34.993) was selected as the calcium standard. An artificial seawater with known  $Ca^{2+}$  concentrations

(by weighing) was prepared to calibrate this batch of IAPSO seawater. The  $[Ca^{2+}]$  measured was 10.168 mmol/kg and the  $Ca^{2+}/Sal$  ratio was determined to be 290.6. Eluents were prepared by using extra pure grade Methanesulfonic acid (Acros Organics, 99%). The calcium, magnesium and strontium standard stock solutions (1000 mg/L) were bought from the Chinese National Standard Material Center (the corresponding product numbers were BW2021-1000-W-50, BW-2020-1000-W-50, and BW30023-1000-C-50), which were diluted to the designed concentrations and used as standards in recovery test. The deionized water (resistivity 18.2 M $\Omega$ ·cm) used in both preparations of eluent and dilution of seawater samples was obtained from the Milli-Q water purification system (Millipore).

### Procedures

In order to avoid overloading of the column caused by excess sodium ions in solutions, standards and seawater samples were diluted by weight with a suitable dilution factor according to the estimated  $[Ca^{2+}]$ . After dilution, the highest peak shape of  $Na^+$  in seawater sample was not distorted, thus the peaks of  $Mg^{2+}$  and  $Ca^{2+}$  could keep their normal shapes. Considering the accuracy of the analytical balance (0.1 mg), 1 g of seawater sample or standard was weighed for dilution, which could reduce the error caused by weighing.

In order to achieve high precision, the precision of detecting part and autosampler part was tested separately. According to the test result, the uncertainty of the autosampler injection volume was of approximately 0.3%, which exceeded the required precision (<0.1%), thus the manual sample injection was used instead of autosampler injection. The connection mode of six-way valve pipeline was shown in **Figure 1**. The injection pipeline (2) of the six-way valve was directly connected to the sample solution, and a syringe was connected to the waste pipeline (3). Before injection, the syringe was pulled to form a vacuum and ~2 mL diluted sample solution was thus sucked through the sample loop due to the pressure differences, that guaranteed the sample loop was cleaned and completely filled. Large volume



injection was chosen by using big sample loop (100  $\mu\text{L}$ ) to reduce the error caused by manual injection.

In previous IC methods,  $\text{Mg}^{2+}$  and  $\text{Ca}^{2+}$  could be separated and detected from excess sodium solution by sample solution complexation (García-Fernández et al., 2004; Melendez et al., 2013) or double pump separation system of IC (Laikhtman et al., 1998). The complex sample pretreatment and separation process might cause the loss of the detected  $\text{Ca}^{2+}$ , reducing the precision of the analysis method. Therefore, in this study, we tried to simplify the sample pretreatment and subsequent analysis process to eliminate potential errors. There was no complex sample pretreatment except the necessary dilution, the injection and separation pipelines were also minimized in the IC analysis process. Compared with the previous methods, the precision of this method has been significantly improved.

## RESULTS AND DISCUSSION

### Precision and Reproducibility

The precision of the method for  $\text{Ca}^{2+}$  in seawater was investigated by analyzing five runs of a sample. To compare the precision of autosampler injection method and manual injection method, reproducibility was tested using the diluted Dickson reference seawater (Batch 154) and the single calcium standard solution by manual injection and automatic injection, respectively. The retention time between these two different injection methods shows a similar pattern while the relative standard deviation (RSD) for the  $\text{Ca}^{2+}$  peak area exhibits some differences. The RSD is 0.05% in manual injection method while 0.45% in automatic injection method ( $n = 5$ ) (Table 1). Only the manual injection method fulfills the <0.1% requirement of  $\text{Ca}^{2+}$  analysis in seawater. The very stable retention time in both automatic injection method and manual injection method (RSD = 0.04%) implies that the reproducibility in ion-exchange separation process ( $\text{Mg}^{2+}$ ,  $\text{Ca}^{2+}$ , and  $\text{Sr}^{2+}$ ) is very stable. The differences in peak area reproducibility between the automatic injection and manual injection method in both seawater sample and the single calcium standard solution test indicates that it is the reproducibility in automatic injection method that limits the whole precision of IC analysis.

The sample injection volume should be controlled by the sample loop (100  $\mu\text{L}$ ) in principle. In the process of automatic injection, the sample solution was extracted into a syringe-type

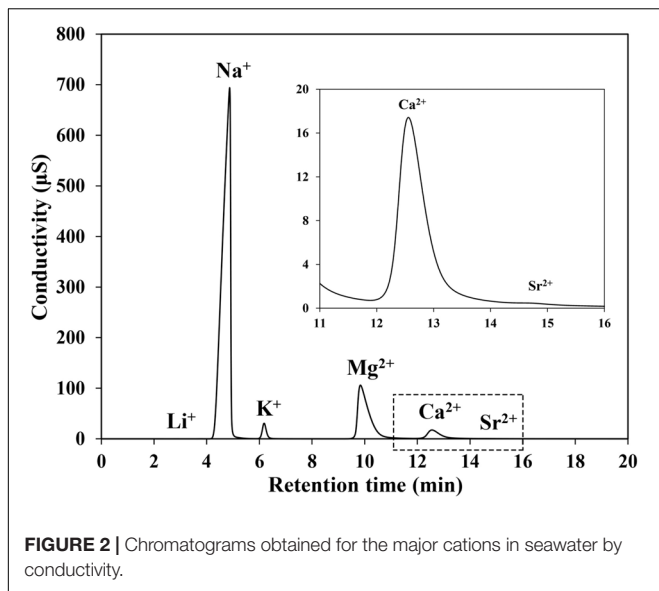
pump from the sample bottle through the pump and the needle moved to the injection pipeline (2) in Figure 1 to push the sample solution into the sample loop. During samples extraction and injection, small bubbles from the atmosphere might be introduced into the pipeline and stayed in the sample loop. When switching to manual injection method, a syringe-type pump, a six-way valve and some loops before sample entering through the other six-way valve (Figure 1) into the sample loop (100  $\mu\text{L}$ ) which were included in automatic injection method were abandoned. Instead a syringe and a short loop were connected to a six-way valve directly, and the pipeline (2) in Figure 1 was always in the sample bottle to avoid the introduction of bubbles. On the other hand, the automatic injection mode is to “push” samples into the sample loop. This mode might slightly compress the solution and small bubbles were more likely to stay in the sample loop, which would increase potential variations in the sampling volume. While the manual injection mode is to “suck” samples into the sample loop by the pressure differences, the sample loop could be filled uniformly by the sample solution and it was not easy to form bubbles. By manual injection, the sample loop could stably control the injection volume to improve the whole precision of IC analysis. Therefore, the manual injection method exhibited a much higher reproducibility than autosampler method.

### Optimization of the Chromatographic Separation

The basic principle of IC is to measure ionic species' concentrations after separating them based on their interactions with a resin column. Before detection, sample solutions pass through a pressurized chromatographic column. After first absorbing by column constituents and separating by eluents of the ions, various ions in a sample could be separated due to their different retention time. Thus, the retention time of different species not only depends on species type, size, column materials, but also is influenced by the eluent type, the concentration and the flowing rate. For seawater sample (Figure 2), which is a complex matrix medium,  $\text{Li}^+$ ,  $\text{Na}^+$ ,  $\text{K}^+$ ,  $\text{Mg}^{2+}$ ,  $\text{Ca}^{2+}$ , and  $\text{Sr}^{2+}$  could be separated and detected in turn. The retention time of  $\text{Mg}^{2+}$ ,  $\text{Ca}^{2+}$ , and  $\text{Sr}^{2+}$  are close to each other due to their similar ionic properties. In order to achieve a good separation effect of  $\text{Mg}^{2+}$ ,  $\text{Ca}^{2+}$ , and  $\text{Sr}^{2+}$  in seawater, different eluent concentrations and flow rates, as well as dilution effects on samples were tested. Take the separation

**TABLE 1** | Results of precision analysis for  $\text{Ca}^{2+}$  concentration in Dickson reference seawater (Batch 154, salinity = 33.347) and the single calcium standard solution using manual injection and automatic injection, respectively.

	Injection method	Dilution factor	Retention time (min)	RSD% ( $n = 5$ )	Peak area ( $\mu\text{s}\cdot\text{min}$ )	$[\text{Ca}^{2+}]$ (mmol/kg)	RSD% ( $n = 5$ )
Dickson reference seawater	Manual injection	1:50.6	10.282 $\pm$ 0.004	0.04%	8.690 $\pm$ 0.004	9.812 $\pm$ 0.005	0.05%
	Automatic injection	1:50.6	10.214 $\pm$ 0.004	0.04%	8.61 $\pm$ 0.04	9.80 $\pm$ 0.04	0.45%
Calcium standard solution	Manual injection	1:128.8	10.289 $\pm$ 0.004	0.04%	8.822 $\pm$ 0.006	24.95 $\pm$ 0.02	0.07%
	Automatic injection	1:125.8	10.471 $\pm$ 0.006	0.06%	9.04 $\pm$ 0.02	24.95 $\pm$ 0.06	0.26%



**FIGURE 2** | Chromatograms obtained for the major cations in seawater by conductivity.

degree between  $Mg^{2+}$  and  $Ca^{2+}$  as an example, it can be described by the resolution of  $Mg^{2+}$  and  $Ca^{2+}$ , which is expressed as:

$$R = \frac{2(t_R(Ca) - t_R(Mg))}{W(Ca) + W(Mg)} \quad (1)$$

where  $R$  is the resolution,  $t_R$  is the retention time and  $W$  is the peak width.

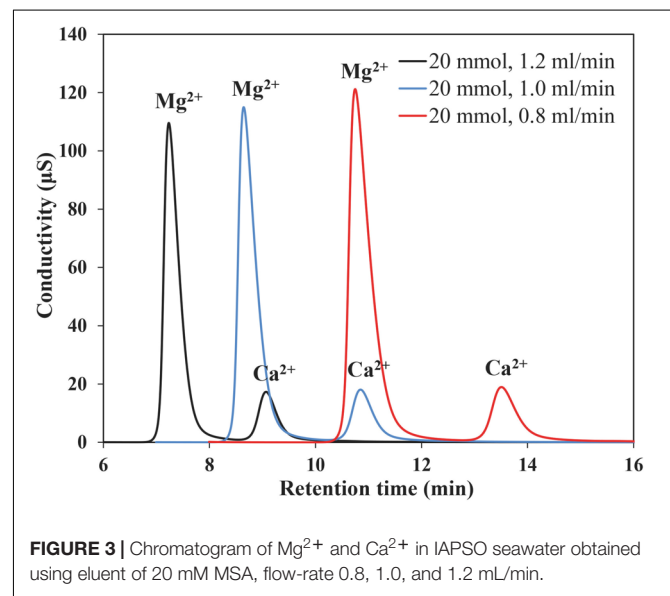
The separation degree ( $R$ ) under three different eluents' concentrations and flow rates are listed in **Table 2**. No significant changes in retention or peak shapes were observed under all rinsing conditions (**Figure 3**), although cation separation degree, retention time and peak area of  $Mg^{2+}$  and  $Ca^{2+}$  were found to decrease with enhanced eluent concentrations and flow rates. In the requirement of routine IC analysis, ions can be considered to be totally separated if  $R$  is greater than 1.5. Considering the retention time and resolution, the eluent concentration of 20 mmol/L and the flow rate of 1.0 mL/min are selected in the present study. In this condition,  $Mg^{2+}$  and  $Ca^{2+}$  in seawater can be well separated in less than 15 min (**Figure 3**), which makes the whole measurement process time-saving.

## Reference Solution

Due to the similar ionic properties among  $Mg^{2+}$ ,  $Ca^{2+}$ , and  $Sr^{2+}$ , the retention times of  $Mg^{2+}$ ,  $Ca^{2+}$ , and  $Sr^{2+}$  are close to each other (**Figure 2**). In seawater, the concentration of  $Mg^{2+}$  is nearly four times higher than  $Ca^{2+}$ , while  $Sr^{2+}$  is 100 times lower. Although good separation effects between  $Mg^{2+}$  and  $Ca^{2+}$  ( $R > 2.5$ ) could be achieved with the eluent concentration and flow rate of 20 mmol/L and 1.0 mL/min, there are small tailing peaks of  $Mg^{2+}$  which cause partial overlap between  $Mg^{2+}$  and  $Ca^{2+}$  peaks, albeit only to a small degree (**Figure 4**). Instead, the peak area of  $Sr^{2+}$  is very small after separated by the IC column (**Figure 2**) but still has a partial overlap with  $Ca^{2+}$  peak. Due to the lower concentration compared with  $Mg^{2+}$ ,  $Sr^{2+}$  has

**TABLE 2** | The resolution of  $Mg^{2+}$  and  $Ca^{2+}$  in seawater with different eluent concentrations and flow rates.

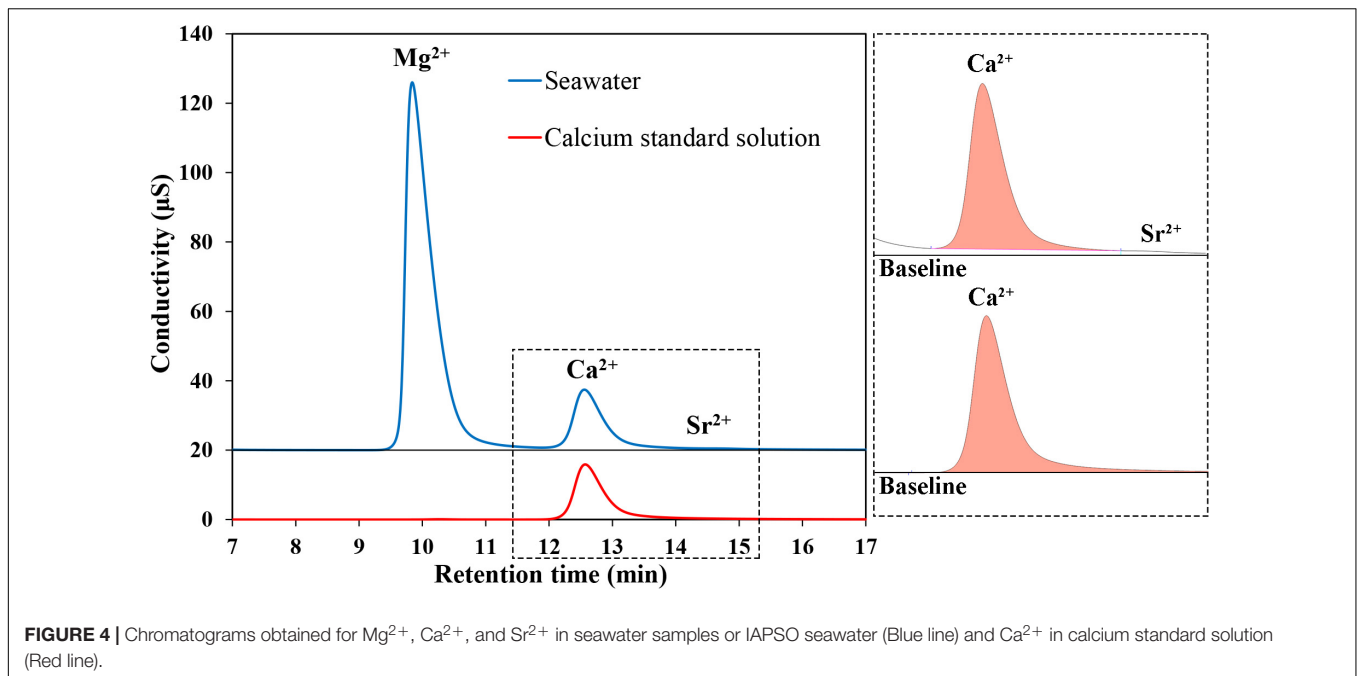
Concentration (mmol/L)	Flow rate (mL/min)	Peak area of $Ca^{2+}$ ( $\mu\text{s}\cdot\text{min}$ )	Retention time of $Ca^{2+}$ (min)	Resolution
15	0.8	10.670	20.963	3.516
	1.0	8.532	16.833	3.394
	1.2	7.100	14.073	3.279
20	0.8	10.577	13.513	3.183
	1.0	8.449	10.847	3.015
	1.2	6.994	9.070	2.881
25	0.8	10.328	9.930	2.752
	1.0	8.223	7.977	2.590
	1.2	6.822	6.660	2.453



**FIGURE 3** | Chromatogram of  $Mg^{2+}$  and  $Ca^{2+}$  in IAPSO seawater obtained using eluent of 20 mM MSA, flow-rate 0.8, 1.0, and 1.2 mL/min.

less influence on accurately determining  $Ca^{2+}$  in seawater-like matrix sample by IC method. The partial overlap between  $Mg^{2+}$ ,  $Ca^{2+}$ , and  $Sr^{2+}$  peaks might impair the accuracy of IC analysis, but it is hard to eliminate this phenomenon completely only by changing the separation conditions of IC. Therefore, IAPSO seawater was selected as the reference in this study, the partial overlap phenomenon existing in both standard and sample could eliminate its influence on the analysis results.

Take the Dickson seawater (Batch 154, salinity = 33.347) as a sample, the  $[Ca^{2+}]$  measured using IAPSO seawater and the single calcium standard solution as references were 9.812 mmol/kg and 9.697 mmol/kg, respectively. Differences ( $\sim 1\%$ ) in the measured  $[Ca^{2+}]$  using different reference solutions could be observed. Comparing the  $Ca^{2+}$  peak shapes and integration areas of seawater and zero salinity  $Ca^{2+}$  standard (the single calcium standard solution) (**Figure 4**), small differences in the baseline between the two  $Ca^{2+}$  peak shapes could be observed. It is the tailing of  $Mg^{2+}$  peak that causes a little overlap with the  $Ca^{2+}$  peak. When using the single calcium standard solution as the reference, there is no tailing effect of  $Mg^{2+}$  peak.



The peak shapes of the reference and the sample differ with each other, which would cause discrepancy in the measured  $Ca^{2+}$  value. Thus, the results obtained are not extremely accurate and would be affected by the integration method, such as the selection of the integral interval. By comparison, the similar component between IAPSO seawater and the sample would form similar peak shapes, which could potentially eliminate the influence of  $Mg^{2+}$  and  $Sr^{2+}$ . And different integration methods would hardly affect the measured result. Therefore, IAPSO seawater is a better alternative than the single calcium standard solution as a reference when measuring seawater sample.

### Dilution Effect and Standard Procedure

Samples like seawater need to be diluted before detecting using IC method, because high concentration of ions could cause column overloading problem without diluting. Effect of the dilution factor was tested by detecting the  $[Ca^{2+}]$  in IAPSO seawater after being diluted by a factor of 25, 38, 50, 75, 100, 150 times by weight. A good linear relationship between the  $Ca^{2+}$  concentration and detected peak area ( $R^2 = 0.9999$ ) was observed, which indicates good responses of the  $Ca^{2+}$  in the diluted seawater within the range of 0.07–0.43 mmol/kg. Since the concentration of  $Ca^{2+}$  is relatively stable in seawater, we narrow the concentration range of the analytical curve to 0.18–0.22 mmol/kg (i.e., diluted 40–60 times), and dilute the seawater samples approximately 50 times.

A negative intercept of the calibration curve between detected  $Ca^{2+}$  peak area and the  $[Ca^{2+}]$  could be observed in **Figure 5**. If the peak area of  $Mg^{2+}$  and the  $Mg^{2+}$  concentration was fitted, good linear fitting could also be observed with a slightly positive intercept. The phenomenon corresponds to the hypothesis that the peak area of  $Ca^{2+}$  in seawater may be underestimated due to the overlap between the peaks of  $Mg^{2+}$  and  $Ca^{2+}$ , while the peak area of  $Mg^{2+}$  may be overestimated on the contrary. It should be

noted that the reduced peak area is closely related to the rinsing conditions and the integration method.

### Accuracy and Interferences of $Mg^{2+}$ and $Sr^{2+}$

The accuracy of any method can only be determined relative to a reference standard that has been certified by several independent laboratories, typically using a number of different techniques. However, there is no such certified seawater standard for  $Ca^{2+}$ . Therefore, in this study, the accuracy of this method was determined through the recovery test. Three calcium standards with certain concentrations were obtained by adding a certain amount of calcium standard solution to IAPSO seawater. According to the narrow variation range of  $[Ca^{2+}]$  in seawater, the  $[Ca^{2+}]$  of IAPSO seawater increased by 0.5, 2, and 5%, respectively, relative to the initial concentration. The density of the calcium standard solution was 1.000 g/cm<sup>3</sup> at 25°C determined by gravimetric method. As shown in **Table 3**, the recovery ratio is  $100 \pm 0.3\%$ , which is slightly larger than the required accuracy ( $100 \pm 0.1\%$ ). However, comparing with the recovery test results of other IC methods, the recovery ratio of the present method is much better than that of others, whose errors are approximately 1–5% (Thomas et al., 2002; Zeng et al., 2006; Caland et al., 2012; Melendez et al., 2013). It's worth noting that there may be some potential errors in the recovery test, such as the change of solution density and Mg/Ca ratio in standard preparation, the accurate value of  $[Ca^{2+}]$  calculated after addition, etc. The error of recovery ratio (0.3%) is partly caused by the standard preparation. Thus, the recovery ratio cannot well represent the accuracy of this method, which may be better than  $100 \pm 0.3\%$ . Nonetheless, until an independently  $Ca^{2+}$ -certified natural seawater reference

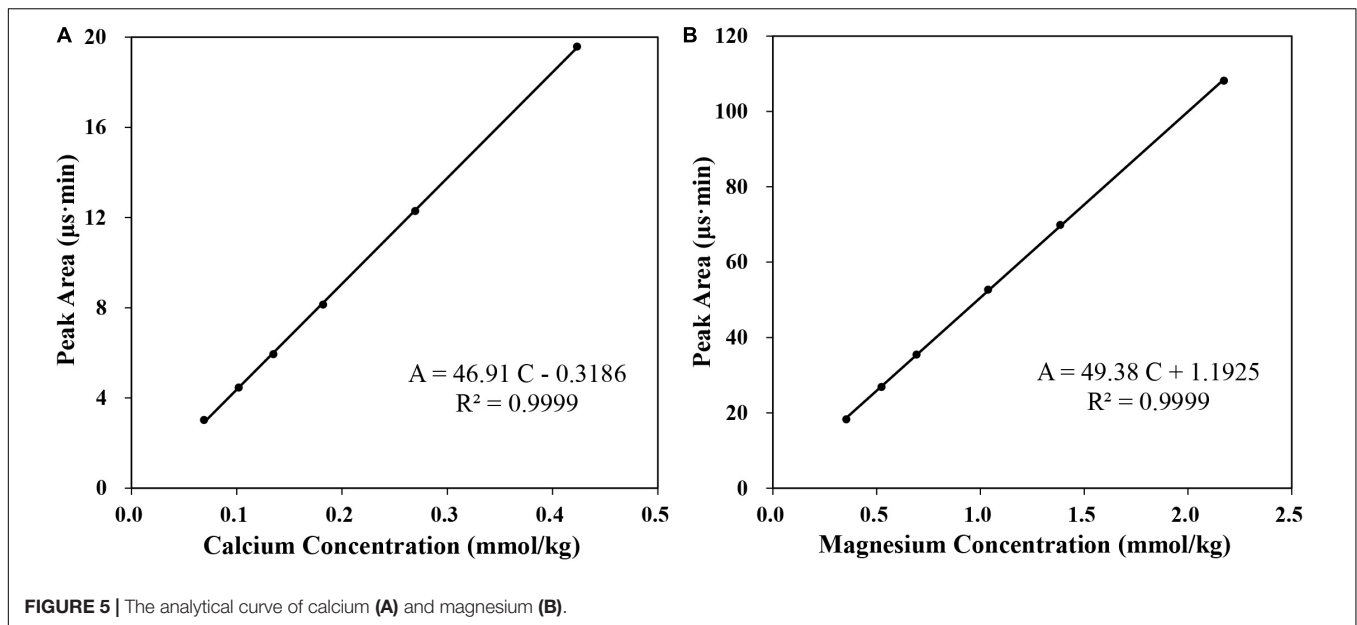


FIGURE 5 | The analytical curve of calcium (A) and magnesium (B).

becomes widely available, the accuracy of this method remains to be further determined.

In order to study the effect of  $Mg^{2+}$  and  $Sr^{2+}$  concentrations on  $Ca^{2+}$  analysis, zero salinity  $Mg^{2+}$  and  $Sr^{2+}$  standards were separately added into IAPSO seawater to produce samples of Mg/Ca ratio from 1 to 2.01 and Sr/Ca ratio from 1 to 7.08 that of seawater ratio. In each case,  $Ca^{2+}$  was determined at least three times to ensure the results agreeing within 0.1%. Results of these analyses are presented in Table 4. With the increasing  $Mg^{2+}$  concentration, the measured  $[Ca^{2+}]$  deviates from the real value and decreases with increasing of the  $Mg^{2+}$  concentration or Mg/Ca ratio in sample.

When the measured  $[Ca^{2+}]$  is plotted against the Mg/Ca ratio in the sample (Figure 6), a good linearity could be obtained ( $R^2 = 0.995$ ), which provides a method to correct the underestimate of  $[Ca^{2+}]$  in the sample caused by deviated Mg/Ca ratios. The correction equation could be described as follows:

$$[Ca^{2+}]_{correcting} = [Ca^{2+}]_{measured} + (R_{sample} - R_{IAPSO}) \times |K| \tag{2}$$

where  $[Ca^{2+}]_{correcting}$  is the  $Ca^{2+}$  concentration after correction;  $[Ca^{2+}]_{measured}$  is the  $Ca^{2+}$  concentration measured by IC; R is the Mg/Ca ratio, which could be obtained from measured

$Mg^{2+}$  and  $Ca^{2+}$  concentrations; K is the slope of the regression fitting equation, which relates to the parameters including the eluent concentration, flow rate, etc. According to the linear fitting equation ( $C = -0.01394 R + 10.25$ ) and the Mg/Ca ratio in IAPSO seawater (5.137), Eq. 2 could be rewritten as Eq. 3.

$$[Ca^{2+}]_{correcting} = [Ca^{2+}]_{measured} + (R_{sample} - 5.137) \times 0.01394 \tag{3}$$

After correction with Eq. 3, the  $Ca^{2+}$  concentrations of samples with different Mg/Ca ratios, listed in Table 5, show good accuracy with deviation within 0.1%.  $Sr^{2+}$  has a similar effect on the  $Ca^{2+}$  measurement and the results can also be corrected with a similar correction method. Considering that the  $Sr^{2+}$  concentration in seawater is extremely low and the variation of Sr/Ca ratio is only approximately 2–3% (Villiers, 1999), the influence of  $Sr^{2+}$  on the  $Ca^{2+}$  measurement can be neglected by IC method when using IAPSO seawater as a reference.

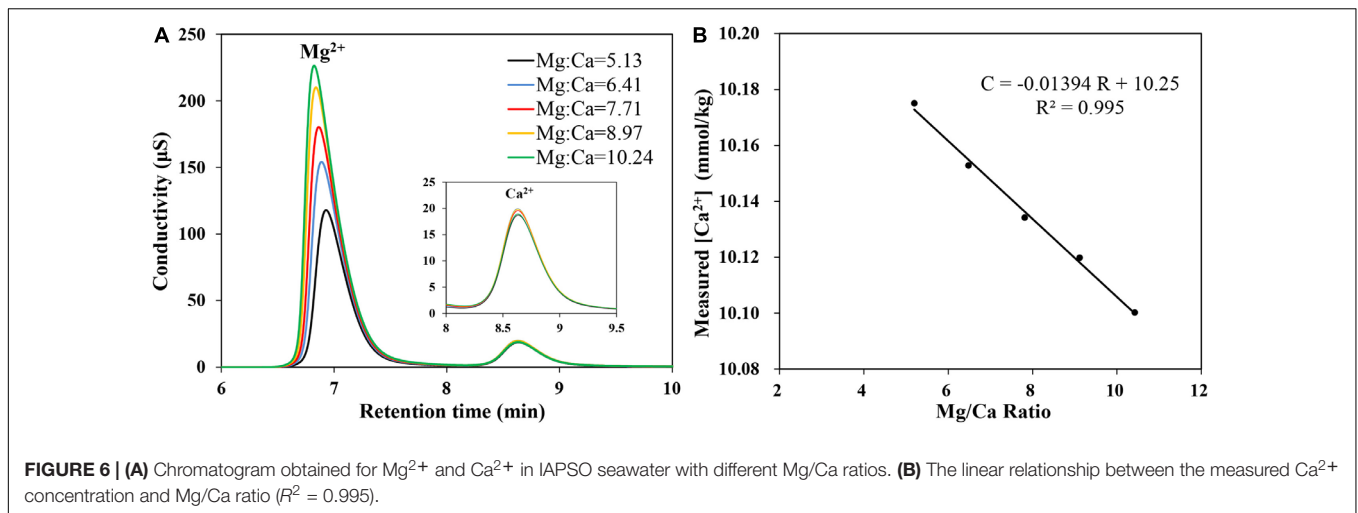
TABLE 3 | Results of recovery test by adding known calcium standard solution to IAPSO seawater.

Initial concentration (mmol/kg)	Ca <sup>2+</sup> Added (mmol/kg)	Ca <sup>2+</sup> Taken (mmol/kg)	Ca <sup>2+</sup> Measured (mmol/kg)	Recovery ratio Measured/Taken
10.168	0.000	10.168	10.169	100.00%
10.168	0.051	10.219	10.193	99.75%
10.168	0.201	10.369	10.366	99.98%
10.168	0.500	10.668	10.637	99.71%

TABLE 4 | Study of the effects of  $Mg^{2+}$  and  $Sr^{2+}$  on  $Ca^{2+}$  determinations.

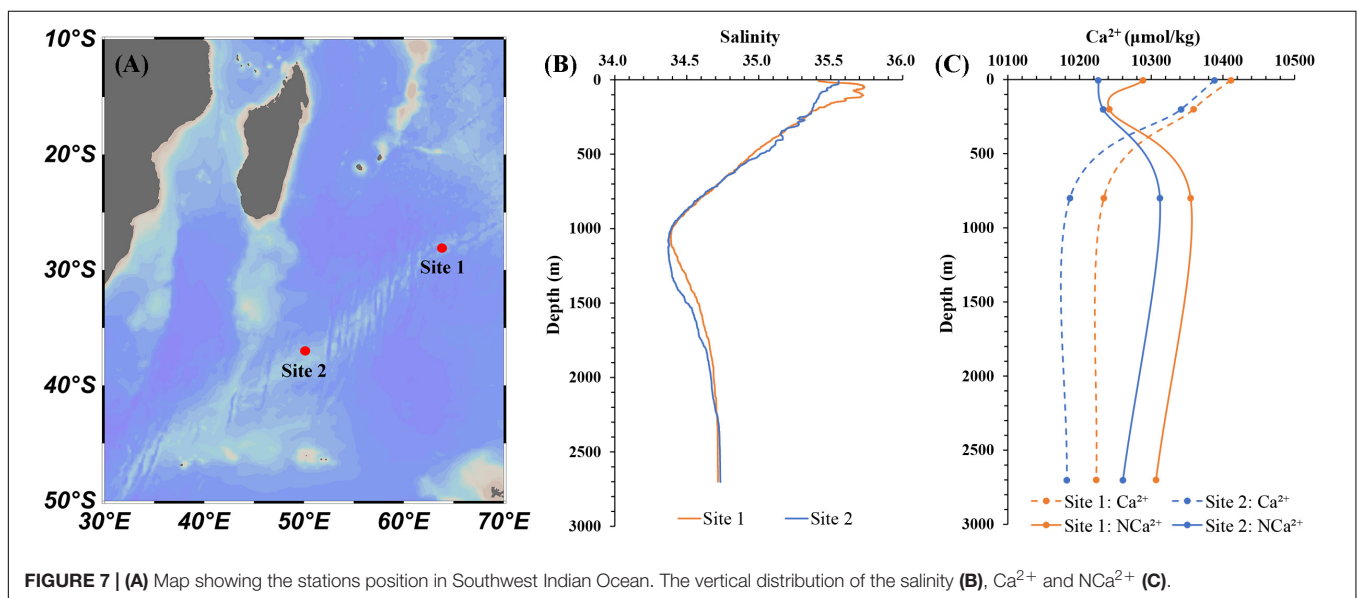
Mg/Mg <sub>sw</sub> Ratio	Sr/Sr <sub>sw</sub> Ratio	Initial concentration (mmol/kg)	Measured (mmol/kg)	Ca Ratio Measured/Initial
1	1	10.168	10.175	100.07%
1.25	1	10.168	10.153	99.85%
1.50	1	10.168	10.134	99.67%
1.76	1	10.168	10.120	99.53%
2.01	1	10.168	10.100	99.33%
1	3.07	10.168	10.045	98.79%
1	5.05	10.168	10.005	98.39%
1	7.08	10.168	9.940	97.76%

Mg/Mg<sub>sw</sub> ratio and Sr/Sr<sub>sw</sub> ratio in the table are relative to their seawater values.



**TABLE 5 |** Results of  $Ca^{2+}$  concentration after correction according to Mg/Ca ratio.

Mg/Ca Ratio measured	Initial concentration (mmol/kg)	Measured (mmol/kg)	Ca Ratio Measured/Initial	After correcting (mmol/kg)	$Ca^{2+}$ Ratio Correction/Initial
5.13	10.168	10.175	100.07%	10.175	100.07%
6.41	10.168	10.153	99.85%	10.171	100.02%
7.71	10.168	10.134	99.67%	10.170	100.02%
8.97	10.168	10.120	99.53%	10.173	100.05%
10.24	10.168	10.100	99.33%	10.171	100.03%



### Application of This Method

The optimized  $Ca^{2+}$  determination method by IC has good sensitivity and reproducibility which enables precise analysis of small variations of  $[Ca^{2+}]$  in high ionic strength seawater, that will contribute to a more comprehensive study of the carbonate system in seawater. We applied this method to analyze the  $Ca^{2+}$  distribution in natural seawater. As shown in **Figure 7A**, water samples were collected from two stations

in Southwest Indian Ocean in November 2018. Water column samples were collected with Niskin bottles and stored in 100 mL acid-cleaned polyethylene bottles. Calcium were determined by this method and salinity were determined shipboard with the Conductivity-Temperature-Depth (CTD) recorder. **Figure 7B** shows the depth profiles of salinity at the sampling stations and **Figure 7C** shows the vertical distribution of the  $Ca^{2+}$  and normalized  $Ca^{2+}$  ( $NCa^{2+}$ ) calculated by the Eq. 4. The  $[Ca^{2+}]$



**TABLE 6** | Results of the reacting solution components (three parallel groups).

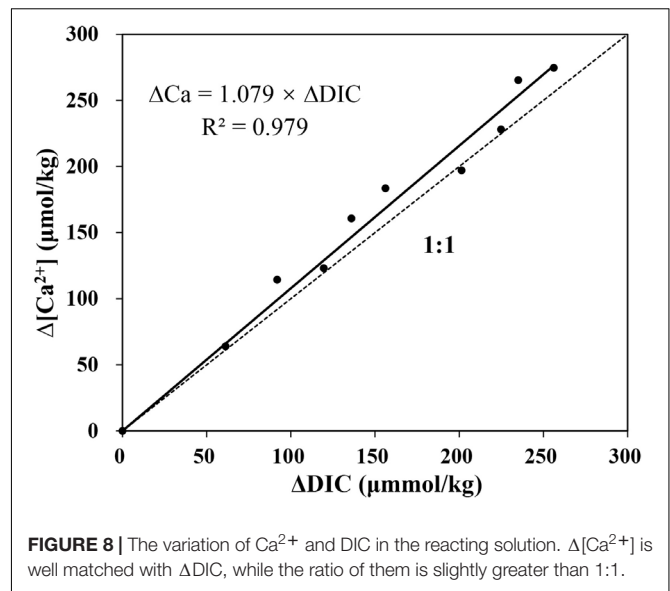
	Ca <sup>2+</sup> (μmol/kg)	DIC (μmol/kg)	TALK (μmol/kg)	pH
Initial	10251 ± 1	2268 ± 1	2812 ± 1	8.521 ± 0.005
Final	9976 ± 17	2012 ± 5	2254 ± 5	8.091 ± 0.007
Δ	275 ± 18	256 ± 6	558 ± 6	0.430 ± 0.012

gradually decreases from 0 to 200 m and there is a rapid decrease up to 800 m, while at higher depths is found to remain constant, which is consistent with the investigation of Naik et al. (1983). The profiles of NCa<sup>2+</sup> indicates that the ratios of Ca<sup>2+</sup>/Sal in deep waters is higher than that in surface waters, which is the result of CaCO<sub>3</sub> precipitation and dissolution process. It is also noted that the NCa<sup>2+</sup> of medium-deep waters in Site 2 is lower than that in Site 1. There are more accumulations of dissolved Ca<sup>2+</sup> in Site 1 at this depth due to the “older” Antarctic intermediate water and North Atlantic deep water. The studies of Horibe et al. (1974) and Villiers (1998) found similar variations in the NCa<sup>2+</sup> of deep water in different ocean basins. The high resolution of sampling is needed for a detailed discussion.

$$\text{NCa}^{2+} = \frac{[\text{Ca}^{2+}]}{\text{Salinity}} \times 35 \quad (4)$$

Benefit from the small required sample volume and the simple measurement operation, this method can also be applied to the laboratory study of calcium carbonate precipitation and dissolution, but having little effect on the reaction solution volume. In this study, we studied the precipitation rate of calcite in seawater with this method. The calcite crystal growth experiments were conducted by adding calcite seeds (0.1 g) into the sealed Duran bottles. The calcite growth would initiate after adding 500 ml artificial seawater with initial saturation ( $\Omega$ ) of  $\sim 12$ . The artificial seawater was prepared following Kester et al. (1967). During the experiments, 10 ml aliquots of the reacting solution were sampled every 2 to 3 days, and filtered through a 0.45 μm membrane for later analysis. pH was measured at  $25 \pm 0.01^\circ\text{C}$  with an Orion Ross combination glass pH electrode calibrated against three NIST standard buffers (4.01, 7.00, and 10.01). DIC was measured in triplicate using a DIC analyzer (Apollo Scitech, AS-C3). [Ca<sup>2+</sup>] was determined by this method. TALK was detected by the Gran Titration (Millero et al., 1993) only for the initial and final reacting solution to save sample volume. Both DIC and TALK were calibrated against the Dickson reference seawater and the precision was better than 0.1%. When calcite precipitated, the corresponding reduction of [Ca<sup>2+</sup>], DIC and TALK should follow the theoretical ratio of 1: 1: 2. Comparing the variations of [Ca<sup>2+</sup>], DIC and TALK parameters in solution before and after precipitation, the average ratio of ΔCa: ΔDIC: ΔTALK is 0.986: 0.917: 2 (Table 6).

The ΔCa: ΔTALK ratio of 0.986:2 deviates by about 1% from the theoretical ratio of 1:2, which is more than the combined precisions of the IC (Ca<sup>2+</sup>) and titrations (TALK) methods. Because when calculate the Δ, the absolute errors of [Ca<sup>2+</sup>]

**FIGURE 8** | The variation of Ca<sup>2+</sup> and DIC in the reacting solution. Δ[Ca<sup>2+</sup>] is well matched with ΔDIC, while the ratio of them is slightly greater than 1:1.

and TALK are still preserved (even larger) as shown in Table 6. Besides, the errors of ΔCa and ΔTALK are partly caused by three parallel experiments. Thus, considering these errors, the relative error of ΔCa and ΔTALK will be more than 1%. If we assume that the measured value of ΔTALK ( $558 \pm 6 \mu\text{mol/kg}$ ) was absolutely accurate, then the expected value of ΔCa would be  $279 \pm 3 \mu\text{mol/kg}$ . In fact, the measured value of ΔCa is  $275 \pm 18 \mu\text{mol/kg}$ , which is consistent with the expected value. Although the ΔCa: ΔTALK ratio is as expected, due to the large absolute error (of approximately  $\pm 10 \mu\text{mol/kg}$ ) of calcium determination, there may be some deviation when establishing the relationship between [Ca<sup>2+</sup>] and TALK in natural seawater. This also indicates that the current precision of calcium determination ( $<0.1\%$ ) is not enough, which needs to reach better than 0.02% as mentioned above.

Reduction in DIC shows a relatively smaller value in comparison. When the variations of [Ca<sup>2+</sup>] is depicted against DIC reduction at a regular interval, good linearity is achieved when the least squares linear fitting algorithm is used to fit the data. The slope of the regression is close to 1.08 (Figure 8). The deviation of slope from the theoretical value 1 may be caused by the DIC data, which could be partly influenced by atmospheric CO<sub>2</sub> during sampling. This result suggests that the optimized method for determination of [Ca<sup>2+</sup>] has a good response to the small variation of Ca<sup>2+</sup> in seawater. More importantly, compared to DIC, which could be influenced by other carbon related process, especially CO<sub>2</sub> interference form atmosphere, changes of Ca<sup>2+</sup> are almost exclusively controlled by the CaCO<sub>3</sub> precipitation.

In summary, this method can be widely applied to the analysis of Ca<sup>2+</sup> distribution in the ocean and the laboratory studies of calcium carbonate precipitation and dissolution in seawater. Determination of [Ca<sup>2+</sup>] in high precision can help to elucidate the precipitation/dissolution process of calcium carbonate, especially the process of being affected by biological

activity. High quality  $\text{Ca}^{2+}$  data can also be compared with DIC and TALK dataset to describe the carbonate system in a more comprehensive way.

## CONCLUSION

Based on the common method, a simple, high precision, non-toxic and labor-saving technique using IC for detecting  $\text{Ca}^{2+}$  concentration in seawater has been developed. With the manual sample injection method, an overall precision of better than 0.1% could be achieved in  $\text{Ca}^{2+}$  detection in seawater. Instead of the single calcium standard solution, IAPSO seawater is used as the  $\text{Ca}^{2+}$  reference to achieve a higher accuracy.

Effects of sample dilutions,  $\text{Mg}^{2+}$  and  $\text{Sr}^{2+}$  on measured  $[\text{Ca}^{2+}]$  have also been investigated. Sample dilutions have no discernible effect on the measurements. However, due to the little overlap between peaks,  $\text{Mg}^{2+}$  shows a linear decrease in measured  $[\text{Ca}^{2+}]$  with the increasing Mg/Ca ratio in seawater. Thus, according to the measured Mg/Ca ratio in seawater, the measured  $[\text{Ca}^{2+}]$  can be further corrected to reach higher accuracy with deviation within 0.1%.  $\text{Sr}^{2+}$  has similar effects on the  $\text{Ca}^{2+}$  measurements and the results can also be corrected with a similar correction method.

This method has been applied to the analysis of  $\text{Ca}^{2+}$  distribution in Southwest Indian Ocean and the laboratory study on the calcite precipitation in seawater. The small variations of  $[\text{Ca}^{2+}]$  can be effectively detected in the experiment of calcite precipitation in seawater and that are consistent well with the variations of DIC and TALK. This shows that our method offers good sensitivity for  $\text{Ca}^{2+}$  determinations in seawater with high precision. It will contribute to a more comprehensive study of the carbonate system in seawater with  $\text{Ca}^{2+}$  parameter.

## REFERENCES

- Andersson, A. J., and Gledhill, D. (2013). Ocean acidification and coral reefs: effects on breakdown, dissolution, and net ecosystem calcification. *Ann. Rev. Mar. Sci.* 5, 321–348. doi: 10.1146/annurev-marine-121211-172241
- Barrett, P. M., Resing, J. A., Buck, N. J., Feely, R. A., Bullister, J. L., et al. (2014). Calcium carbonate dissolution in the upper 1000 m of the eastern North Atlantic. *Glob. Biogeochem. Cycles* 28, 386–397. doi: 10.1002/2013gb004619
- Cai, W. J., Hu, X., Huang, W. J., Murrell, M. C., Lehrter, J. C., et al. (2011). Acidification of subsurface coastal waters enhanced by eutrophication. *Nat. Geosci.* 4, 766–770. doi: 10.1038/ngeo1297
- Caland, L. B. D., Silveira, E. L. C., and Tubino, M. (2012). Determination of sodium, potassium, calcium and magnesium cations in biodiesel by ion chromatography. *Anal. Chim. Acta* 718, 116–120. doi: 10.1016/j.aca.2011.12.062
- Cao, Z., and Dai, M. (2011). Shallow-depth  $\text{CaCO}_3$  dissolution: evidence from excess calcium in the South China Sea and its export to the Pacific Ocean. *Glob. Biogeochem. Cycles* 25:GB2019.
- Chen, C. A. (1978). Decomposition of calcium carbonate and organic carbon in the deep oceans. *Science* 201, 735–736. doi: 10.1126/science.201.4357.735
- Chung, S. N., Lee, K., Feely, R. A., Sabine, C. L., Millero, F. J., et al. (2003). Calcium carbonate budget in the Atlantic Ocean based on water column inorganic carbon chemistry. *Glob. Biogeochem. Cycles* 17:1093.

## DATA AVAILABILITY STATEMENT

All datasets generated for this study are included in the article/supplementary material.

## AUTHOR CONTRIBUTIONS

YP directed the study and its scope. HH, YL, SW, and YP conceived and designed the experiments. HH, YL, SW, and QM performed the experiments. HH and SW compiled and processed all the field and laboratory data. HH wrote the manuscript, with edits and contributions from all co-authors.

## FUNDING

This work was supported by the National Key Research and Development Program of China (Grant No. 2016YFC0304905), the National Natural Science Funds of China (Grant No. 41776084), and the Fundamental Research Funds for the Central Universities (Grant No. 2018QNA4048).

## ACKNOWLEDGMENTS

We thank Prof. Wei-jun Cai, Prof. Yan Zhu, and Mr. Qi Lin for their constructive suggestions for this study. We also thank the editor, JS, along with two reviewers, ZC and ML, for their careful and thoughtful review comments on the content and organization of this article. Furthermore, thanks are due to Naifei Zhong for his help with the technical support.

- Culkin, F., and Cox, R. A. (1966). Sodium, potassium, magnesium, calcium and strontium in sea water. *Deep Sea Res. Oceanogr. Abst.* 13, 789–804. doi: 10.1016/0011-7471(76)90905-0
- Dickson, A. G., Sabine, C. L., and Christian, J. R. (2007). *Guide to Best Practices for Ocean  $\text{CO}_2$  Measurements*. Sidney: North Pacific Marine Science Organization.
- Doney, S. C., Fabry, V. J., Feely, R. A., and Kleypas, J. A. (2009). Ocean acidification: the other  $\text{CO}_2$  problem. *Annu. Rev. Mar. Sci.* 1, 169–192.
- Feely, R. A., and Chen, C. T. A. (1982). The effect of excess  $\text{CO}_2$  on the calculated calcite and aragonite saturation horizons in the northeast Pacific. *Geophys. Res. Lett.* 9, 1294–1297. doi: 10.1029/gl009i011p01294
- Feely, R. A., Sabine, C. L., Lee, K., Berelson, W., Kleypas, J., et al. (2004). Impact of anthropogenic  $\text{CO}_2$  on the  $\text{CaCO}_3$  system in the oceans. *Science* 305, 362–366. doi: 10.1126/science.1097329
- García-Fernández, R., García-Alonso, J. I., and Sanz-Medel, A. (2004). Simultaneous determination of inorganic anions, calcium and magnesium by suppressed ion chromatography. *J. Chromatogr. A* 1033, 127–133. doi: 10.1016/j.chroma.2004.01.024
- Grasshoff, K., Kremling, K., and Ehrhardt, M. (2009). *Methods of Seawater Analysis*. Hoboken, NJ: John Wiley & Sons.
- Hadjiioannou, T. P., and Papastathopoulou, D. S. (1970). EDTA titration of calcium and magnesium with a calcium-selective electrode. *Talanta* 17, 399–406. doi: 10.1016/0039-9140(70)80085-6
- Horibe, Y., Endo, K., and Tsubota, H. (1974). Calcium in the South Pacific, and its correlation with carbonate alkalinity. *Earth Planet. Sci. Lett.* 23, 136–140. doi: 10.1016/0012-821x(74)90040-5

- Jiang, L. Q., Cai, W. J., Feely, R. A., Wang, Y. C., Guo, X. H., et al. (2010). Carbonate mineral saturation states along the U.S. East Coast. *Limnol. Oceanogr.* 55, 2424–2432. doi: 10.4319/lo.2010.55.6.2424
- Kanamori, S., and Ikegami, H. (1980). Computer-processed potentiometric titration for the determination of calcium and magnesium in sea water. *J. Oceanogr. Soc. Jpn.* 36, 177–184. doi: 10.1007/bf02070330
- Kester, D. R., Duedall, I. W., Connors, D. N., and Pytkowicz, R. M. (1967). Preparation of artificial seawater. *Limnol. Oceanogr.* 12, 176–179.
- Kleypas, J. A., Buddemeier, R. W., and Gattuso, J. P. (2001). The future of coral reefs in an age of global change. *Int. J. Earth Sci.* 90, 426–437. doi: 10.1007/s005310000125
- Krumgalz, B. S. (1982). Calcium distribution in the world ocean waters. *Oceanol. Acta* 5, 121–128.
- Laikhtman, M., Riviello, J., and Rohrer, J. S. (1998). Determination of magnesium and calcium in 30% sodium chloride by ion chromatography with on-line matrix elimination. *J. Chromatogr. A* 816, 282–285. doi: 10.1016/s0021-9673(98)00530-5
- Lebel, J., and Poisson, A. (1976). Potentiometric determination of calcium and magnesium in seawater. *Mar. Chem.* 4, 321–332. doi: 10.1016/0304-4203(76)90018-9
- Melendez, M., Corredor, J. E., Nesterenko, E. P., and Nesterenko, P. N. (2013). Direct chromatographic separation and determination of calcium and magnesium in seawater and sediment porewaters. *Limnol. Oceanogr. Methods* 11, 466–474. doi: 10.4319/lom.2013.11.466
- Millero, F. J. (2013). *Chemical Oceanography, Fourth Edition*. Boca Raton, FL: CRC Press.
- Millero, F. J., Feistel, R., Wright, D. G., and McDougall, T. J. (2008). The composition of standard Seawater and the definition of the reference-composition salinity scale. *Deep Sea Res. I* 55, 50–72. doi: 10.1016/j.dsr.2007.10.001
- Millero, F. J., Zhang, J. Z., Lee, K., and Campbell, D. M. (1993). Titration alkalinity of seawater. *Mar. Chem.* 44, 153–165. doi: 10.1016/0304-4203(93)90200-8
- Milliman, J. D., Troy, P. J., Balch, W. M., Adams, A. K., Li, Y. H., and Mackenzie, F. T. (1999). Biologically mediated dissolution of calcium carbonate above the chemical lysocline? *Deep Sea Res. I Oceanogr. Res. Pap.* 46, 1653–1669. doi: 10.1016/s0967-0637(99)00034-5
- Naik, S., Noronha, R. J., Shirodkar, P. V., and Gupta, R. S. (1983). On the distribution of calcium, magnesium, sulphate and boron in the south-western Indian Ocean region of the Southern Ocean. *Sci. Rep. First Indian Exp. Antarct.* 1983, 87–94.
- Olson, E. J., and Chen, C. A. (1982). Interference in the determination of calcium in seawater. *Limnol. Oceanogr.* 27, 375–380. doi: 10.4319/lo.1982.27.2.0375
- Riley, J. P., and Tongudai, M. (1967). The major cation/chlorinity ratios in sea water. *Chem. Geol.* 2, 263–269. doi: 10.1016/0009-2541(67)90026-5
- Sabine, C. L., Key, R. M., Feely, R. A., and Greeley, D. (2002). Inorganic carbon in the Indian Ocean: distribution and dissolution processes. *Glob. Biogeochem. Cycles* 16:1067.
- Schmid, R. W., and Reilley, C. N. (1957). New complexon for titration of calcium in presence of magnesium. *Anal. Chem.* 29, 258–264.
- Shiller, A. M., and Gieskes, J. M. (1980). Processes affecting the oceanic distributions of dissolved calcium and alkalinity. *J. Geophys. Res. Oceans* 85, 2719–2727.
- Smith, S. V., and Mackenzie, F. T. (2016). The role of CaCO<sub>3</sub> reactions in the contemporary CO<sub>2</sub> cycle. *Aquat. Geochem.* 22, 153–175. doi: 10.1007/s10498-015-9282-y
- Thomas, D. H., Rey, M., and Jackson, P. E. (2002). Determination of inorganic cations and ammonium in environmental waters by ion chromatography with a high-capacity cation-exchange column. *J. Chromatogr. A* 956, 181–186. doi: 10.1016/s0021-9673(02)00141-3
- Tsunogai, S., Nishimura, M., and Nakaya, S. (1968). Calcium and magnesium in seawater and the ratio of calcium to chlorinity as a tracer of water masses. *J. Oceanogr. Soc. Jpn.* 24, 153–159. doi: 10.5928/kaiyou1942.24.153
- Villiers, S. D. (1998). Excess dissolved Ca in the deep ocean: a hydrothermal hypothesis. *Earth Planet. Sci. Lett.* 164, 627–641. doi: 10.1016/s0012-821x(98)00232-5
- Villiers, S. D. (1999). Seawater strontium and Sr/Ca variability in the Atlantic and Pacific oceans. *Earth Planet. Sci. Lett.* 171, 623–634. doi: 10.1016/s0012-821x(99)00174-0
- Whitfield, M., and Leyendekkers, J. V. (1969). Liquid ion-exchange electrodes as end-point detectors in complexometric titrations. Determination of calcium and magnesium in the presence of sodium. *Anal. Chim. Acta* 46, 63–70. doi: 10.1016/0003-2670(69)80042-5
- Zeng, W., Chen, Y., Cui, H., Wu, F., Zhu, Y., and Fritz, J. S. (2006). Single-column method of ion chromatography for the determination of common cations and some transition metals. *J. Chromatogr. A* 1118, 68–72. doi: 10.1016/j.chroma.2006.01.065

**Conflict of Interest:** The authors declare that the research was conducted in the absence of any commercial or financial relationships that could be construed as a potential conflict of interest.

Copyright © 2020 He, Li, Wang, Ma and Pan. This is an open-access article distributed under the terms of the Creative Commons Attribution License (CC BY). The use, distribution or reproduction in other forums is permitted, provided the original author(s) and the copyright owner(s) are credited and that the original publication in this journal is cited, in accordance with accepted academic practice. No use, distribution or reproduction is permitted which does not comply with these terms.