



Carbon and Nitrogen Concentrations, Stocks, and Isotopic Compositions in Red Sea Seagrass and Mangrove Sediments

Neus Garcias-Bonet^{1*}, Antonio Delgado-Huertas², Paloma Carrillo-de-Albornoz¹, Andrea Anton¹, Hanan Almahasheer³, Núria Marbà⁴, Iris E. Hendriks⁴, Dorte Krause-Jensen⁵ and Carlos M. Duarte¹

¹ Red Sea Research Center (RSRC) and Computational Bioscience Research Center (CBRC), King Abdullah University of Science and Technology (KAUST), Thuwal, Saudi Arabia, ² Instituto Andaluz de Ciencias de la Tierra, CSIC-UGR, Armilla, Spain, ³ Department of Biology, College of Science, Imam Abdulrahman Bin Faisal University (IAU), Dammam, Saudi Arabia, ⁴ Global Change Research Group, Institut Mediterrani d'Estudis Avançats (IMEDEA, CSIC-UIB), Esporles, Spain, ⁵ Department of Bioscience, Aarhus University, Aarhus, Denmark

OPEN ACCESS

Edited by:

Selvaraj Kandasamy,
Xiamen University, China

Reviewed by:

Limin Hu,
State Oceanic Administration, China
Antonio Bode,
Instituto Español de Oceanografía
(IEO), Spain
Arvind Singh,
Physical Research Laboratory, India

*Correspondence:

Neus Garcias-Bonet
neus.garciasbonet@kaust.edu.sa

Specialty section:

This article was submitted to
Marine Biogeochemistry,
a section of the journal
Frontiers in Marine Science

Received: 10 October 2018

Accepted: 03 May 2019

Published: 29 May 2019

Citation:

Garcias-Bonet N,
Delgado-Huertas A,
Carrillo-de-Albornoz P, Anton A,
Almahasheer H, Marbà N,
Hendriks IE, Krause-Jensen D and
Duarte CM (2019) Carbon and
Nitrogen Concentrations, Stocks, and
Isotopic Compositions in Red Sea
Seagrass and Mangrove Sediments.
Front. Mar. Sci. 6:267.
doi: 10.3389/fmars.2019.00267

Coastal vegetated ecosystems are intense global carbon (C) sinks; however, seagrasses and mangroves in the Central Red Sea are depleted in organic C (C_{org}). Here, we tested whether C_{org} depletion prevails along the Red Sea, or if sediment C_{org} and nitrogen (N) stocks reflect the latitudinal productivity gradient of the Red Sea. We assessed C_{org} and N concentrations, stocks, isotopic compositions ($\delta^{13}C$ and $\delta^{15}N$), and the potential contribution of primary producers to the organic matter accumulation in seagrass and mangrove sediments along the Eastern coast of the Red Sea. Sediment C_{org} concentration was higher in mangroves than seagrasses, while N concentrations were similar, resulting in higher C/N ratios in mangrove than seagrass sediments. Mangrove C_{org} stocks (integrated over the top 10 cm) were twofold higher than those of seagrasses. N concentrations and stocks decreased from south to north in seagrass sediments matching the productivity gradient while C_{org} concentrations and stocks were uniform. The $\delta^{15}N$ decreased from south to north in seagrass and mangrove sediments, reflecting a shift from nitrate and nitrite as N sources in the south, to N_2 fixation toward the north. Stable isotope mixing models showed that seagrass leaves and macroalgae blades were the major contributors to the organic matter accumulation in seagrass sediments; while mangrove leaves were the major contributors in mangrove sediments. Overall, vegetated sediments in the Red Sea tend to be carbonate-rich and depleted in C_{org} and N, compared to coastal habitats elsewhere. Specifically, mean C_{org} stocks in Red Sea seagrass and mangrove sediments (7.2 ± 0.4 and 14.5 ± 1.4 Mg C ha^{-1} , respectively) are lower than previously reported mean global values. This new information of Blue Carbon resources in the Red Sea provides a background for Blue Carbon programs in the region while also helping to balance global estimates.

Keywords: nitrogen, carbon, sediment stocks, stable isotopes, stable isotope mixing model, seagrasses, mangroves

INTRODUCTION

Coastal vegetated ecosystems, such as seagrasses, mangroves, and saltmarshes, also known as Blue Carbon ecosystems (Nellemann et al., 2009; Duarte et al., 2013), are intense carbon sink habitats. Due to their high rates of primary production and their capacity to trap allochthonous particles, these ecosystems can bury organic and inorganic carbon in their sediments for millennia (McLeod et al., 2011; Duarte, 2017). Therefore, Blue Carbon ecosystems play an important role in climate change mitigation by removing atmospheric CO₂ (Duarte et al., 2013). Moreover, these ecosystems protect the coastline from sea level rise by their sediment accretion capacity. Globally, the organic C (C_{org}) burial capacity of Blue Carbon ecosystems ranges from 114 to 131 Tg C yr⁻¹, of which seagrasses, mangroves, and saltmarshes are responsible for 27.4 to 44, 17 to 23.6, and 60.4 to 70 Tg C yr⁻¹, respectively (Nellemann et al., 2009). In seagrass ecosystems, the habitat-forming seagrass is responsible for about half of the total buried C_{org} on average (Kennedy et al., 2010), based on the analysis of stable C isotopic data extracted from more than 200 seagrass sites. Specifically, Kennedy et al. (2010) estimated that global C_{org} burial in seagrass ecosystems could account for 48 to 112 Tg yr⁻¹, combining global average net community production and global average for allochthonous C_{org} trapped in sediments.

Globally, sediment C_{org} stocks have been estimated at 2.6 Pg C for mangroves (Atwood et al., 2017) and between 4.2 and 8.9 Pg C for seagrasses (Fourqurean et al., 2012). However, these global estimates are based on available published data and are therefore skewed toward those areas heavily represented in literature (Lavery et al., 2013), with minor representation of coastal vegetated habitats in arid regions. Thus, additional studies covering poorly represented areas in global estimates are needed to better ascertain global sediment C_{org} stocks in Blue Carbon ecosystems.

Despite the scarcity of data on Blue Carbon ecosystems from arid regions, recent studies have reported that sediments of seagrass and mangrove ecosystems in the Central Red Sea and the Arabian Gulf are depleted in C_{org} (Almahasheer et al., 2017; Cusack et al., 2018; Serrano et al., 2018), but contain high carbonate loads (Saderne et al., 2018). These observations are consistent with the lack of riverine inputs and the oligotrophic nature of the Red Sea, that lead to stunted mangroves (Almahasheer et al., 2016b) and iron-depleted leaves of mangroves and seagrasses (Almahasheer et al., 2016a; Anton et al., 2018), and its warm and salty nature, that favors carbonate deposition. However, these previous assessments of sediment C_{org} stocks in Red Sea seagrasses and mangroves are limited to the Central Red Sea (Almahasheer et al., 2017; Serrano et al., 2018), and no information exists on the associated nitrogen (N) stocks. The Red Sea is characterized by a south to north gradient in oligotrophy, salinity, and temperature (Chaidez et al., 2017), which affects productivity regimes (Raitsos et al., 2013) and may also affect C_{org} and N stocks in sediments. The variability of C_{org} and N stocks in seagrass and mangrove habitats in Red Sea

sediments has not yet been evaluated, so whether the low C_{org} stocks found in the Central Red Sea (Almahasheer et al., 2017; Serrano et al., 2018) prevail across the entire Red Sea is still unknown.

Here, we test the following hypotheses: (i) that C_{org} and N stocks of Red Sea seagrass and mangrove sediments are lower than those in other regions; (ii) that the south to north productivity gradient in the Red Sea is reflected in a south to north gradient in sediment C_{org} and N concentrations and stocks; and (iii) that the habitat-forming primary producers are the main sources of the accumulated organic matter in Red Sea seagrass and mangrove sediments. We do so by estimating the C (organic and inorganic) and N concentrations, stocks, and isotopic compositions in seagrass and mangrove sediments sampled over a broad latitudinal gradient along the Red Sea. We estimate the potential contribution of primary producers to the accumulated organic matter in seagrass and mangrove sediments by applying stable isotope mixing models.

MATERIALS AND METHODS

Study Site

We sampled 43 stations along the Saudi coast of the Red Sea, including 27 seagrass meadows and 16 mangrove stands (Figure 1) on four coastal cruises onboard the R/V Thuwal on February 2016, January 2017, March 2017, and July 2017

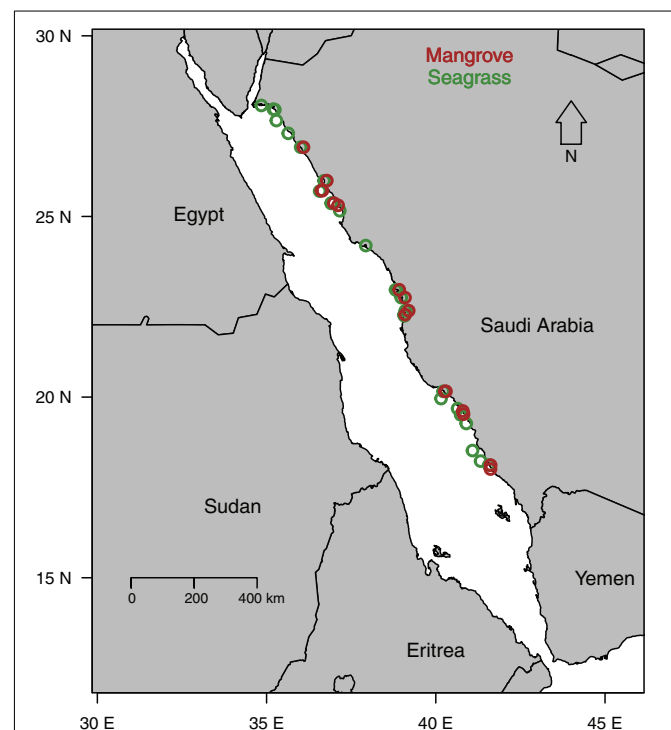


FIGURE 1 | Map showing the location of seagrass (green circles) and mangrove (brown circles) study sites.

(for further details on cruises and survey methods see Garcias-Bonet and Duarte, 2017; Anton et al., 2018; Duarte et al., 2018; Sea et al., 2018). In addition, stations located in the Central Red Sea were sampled using outboard motor boats on November 2014, February 2016, January 2017, March 2017, and July 2017. The sampled seagrass and mangrove stations encompass a latitudinal range of 10 and 8.9°, respectively. At each station, we collected triplicate sediment samples using cylindrical plastic cores (inner diameter = 9.5 cm, length = 30 cm) containing at least 10 cm of sediment. We standardized the sediment sampling to the top 10 cm because most of the sampled seagrass meadows held thin sediment layers. We collected sediment samples from each seagrass species present at each station. The samples were transported back to the laboratory and processed immediately after collection.

Sediment samples were carefully extruded from the cylindrical cores, and the sediment was cut in three layers: from the surface to 1, 1–5, and 5–10 cm below the sediment surface. Seagrass and mangrove tissues were removed from sediment samples after which sediment samples were dried at 60°C (Ryba and Burgess, 2002) until constant weight.

Seagrass and Mangrove Sediment Analysis

The sediment bulk density was calculated as the mass of dry solids in a given volume of sediment (expressed in g DW sediment cm⁻³). Dried sediments were ground using mortar and pestle, and a sediment subsample (1 g DW sediment) was used to estimate the sediment carbonate and inorganic carbon (C_{inorg}) concentrations using a calcimeter as described by Müller and Gastner (1971). Sediment bulk density, carbonate concentration, and C_{inorg} concentration were analyzed on triplicate for each sediment horizon at each station. The remaining sediment was acidified in order to remove carbonates (Hedges and Stern, 1984) before analyzing the organic carbon (C_{org}) and nitrogen (N) concentrations and their stable isotopic compositions ($\delta^{13}C$ and $\delta^{15}N$). Specifically, we added chloride (1M HCl) to each sediment sample until no bubble formation was detectable, then the sediment samples were rinsed, centrifuged and re-dried overnight. The use of a weak HCl solution (up to 2M) has been shown to be free of biases in analysis of $\delta^{13}C$ and $\delta^{15}N$ in sediments (Kennedy et al., 2005).

Elemental C_{org} and N concentrations of sediment samples were analyzed with an Organic Elemental Analyzer Flash 200 (Thermo Fisher Scientific, Waltham, MA, United States). The accuracy was <0.2 and <0.1% for C and N, respectively. The $\delta^{13}C$ and $\delta^{15}N$ analyses of sediment samples were performed by elemental analysis isotope ratio mass spectrometry. Two replicates of C_{org} and N concentrations and their stable isotopic compositions were analyzed for each sediment horizon. Specifically, analyses of samples collected on November 2014 were performed on a Delta V mass spectrometer with ConFlo III coupled to a Costech 4010 elemental analyzer (Thermo Scientific, Waltham, MA, United States) at the UH Hilo

Analytical Laboratory (United States). Analyses of samples collected from February 2016 to July 2017 were performed on a Carlo Elba NC1500 (Milan, Italy) elemental analyzer along with a Delta Plus XP (Thermo-Finnigan, Bremen, Germany) mass spectrometer (EA-IRMS) at the Stable Isotope Laboratory of the Andalusian Institute of Earth Sciences (CSIC-UGR, Spain). Commercial CO₂ and N₂ were used as the internal standard for the C and N isotopic analyses. For $\delta^{13}C$ analysis, we used internal standards of -30.63 and -11.65‰ (V-PDB), and for $\delta^{15}N$ analysis, we used internal standards of -1.02 and +16.01‰ (AIR). The analytical precision was better than ± 0.1‰ for $\delta^{15}N$ and $\delta^{13}C$, calculated from standards systematically interspersed in sample batches and after correcting for the daily drift of the mass spectrometer. The standard for reporting C measurements is V-PDB (Vienna-PDB) and for N measurements the standard is atmospheric nitrogen (AIR). The stable isotopic composition is reported as δ values:

$$\delta = (R_{sample}/R_{standard} - 1) \times 1000,$$

where $R = {}^{13}C/{}^{12}C$ for $\delta^{13}C$, and $R = {}^{15}N/{}^{14}N$ for $\delta^{15}N$ values.

Then, we calculated the weighted average per replica taking into account the depth of each horizon. Moreover, we calculated inorganic C (C_{inorg}), organic C (C_{org}), and N stocks integrated over the top 10 cm taking into account the sediment C_{inorg} , C_{org} , and N concentrations and the bulk density for each sediment horizon. We only integrated the stocks over the analyzed top 10 cm of sediment, despite the general recommendation for sediment stock analysis to sample the top 1 m (Macreadie et al., 2014), because our analyses were restricted by the available sediment thickness at seagrass stations. In many reef lagoons, particularly in the southern Red Sea, sampled seagrass meadows were composed of thin sediment layers, often just barely over 10 cm thick, overlaying carbonate rock. It is, therefore, more appropriate, for comparative purposes, to compare the top 10 cm stock than to extrapolate to 1 m, beyond the sediment thickness present in many of the meadows sampled here. The thickness we used, however, is the same as in a recent study on C_{org} , N, and phosphorous sediment stocks in Danish seagrass meadows (Kindeberg et al., 2018).

Contribution of Red Sea Primary Producers to Seagrass and Mangrove Sediment

We used recently reported stable isotopic compositions of primary producers in the Red Sea (Duarte et al., 2018) to assess their contribution to the organic matter accumulation in seagrass and mangrove sediments. Specifically, we compiled available $\delta^{13}C$ and $\delta^{15}N$ values of macroalgae blades, seagrass leaves, halophytes leaves, mangrove leaves, and seston sampled along the Red Sea (Duarte et al., 2018).

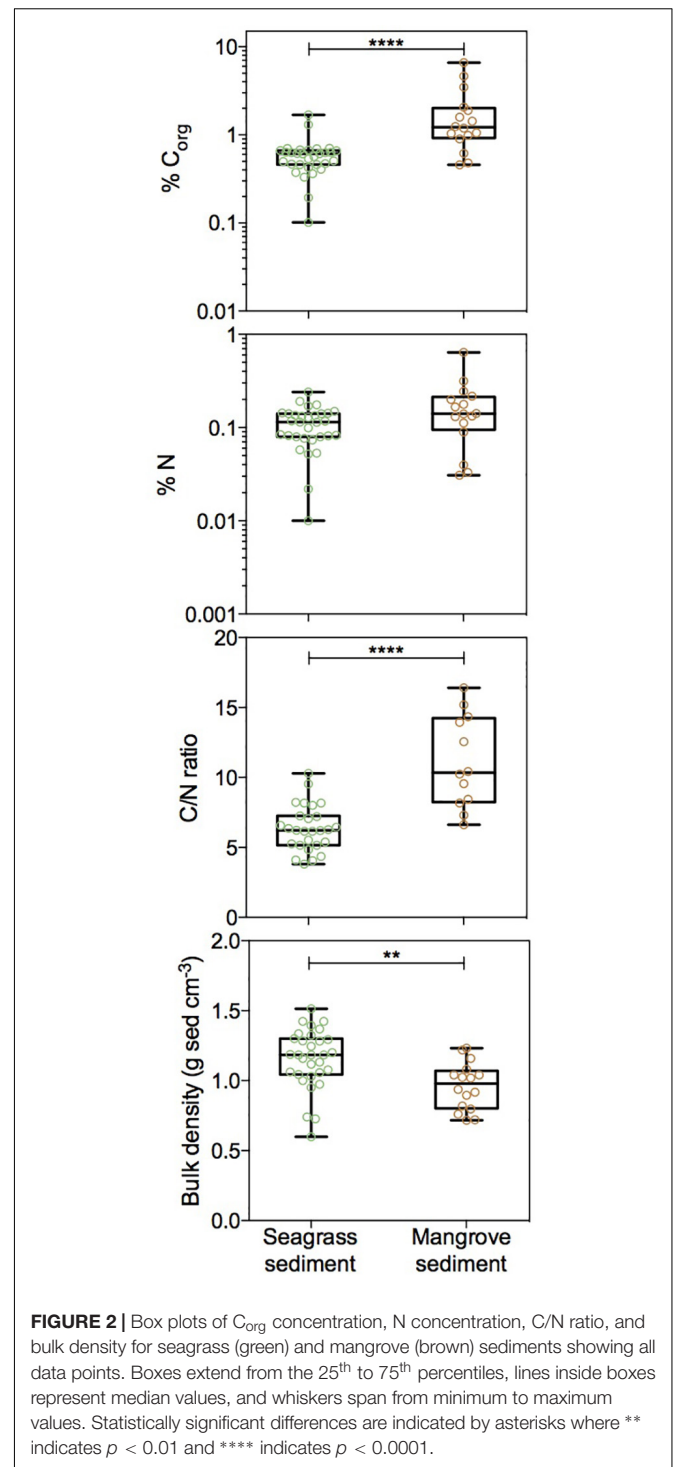
We complemented the compilation of stable isotopic composition values of primary producers in the Red Sea reported by Duarte et al. (2018) by sampling and analyzing the $\delta^{13}C$ of microbial mats found in Central Red Sea mangrove

stands, which was included in the larger data set. Microbial mats were sampled from the sediment near a mangrove stand at the 'Ibn Sina field research station and nature conservation area' in the Central Red Sea (22° 20' 25.032'' N; 39° 5' 17.411'' E) in April 2018 by carefully collecting the upper layer with a spatula. The $\delta^{13}\text{C}$ was analyzed by cavity ring-down spectroscopy (CM-CRDS G2201-I, Picarro, Santa Clara, CA, United States) attached to a combustion module (Costech Analytical Technologies, Inc., Valencia, CA, United States) at the Tarek Ahmed Juffali Research Chair in Red Sea Ecology Laboratory (KAUST, Saudi Arabia). Microbial mat samples were dried, acidified and encapsulated in tin boats. We used two CO_2 gas Stable Isotope Calibration Standards UN1956 ($\delta^{13}\text{C} = 25$ and -40‰ , Air Liquide America Specialty Gases, Plumsteadville, PA, United States) and three certified solid C standards from the Reston Stable Isotope Laboratory [United States Geological Survey (USGS), Reston,

TABLE 1 | Mean (\pm SE) inorganic carbon (C_{inorg}) concentration, organic carbon (C_{org}) concentration, nitrogen (N) concentration, C/N ratio, bulk density, C_{org} stock, organic N (N_{org}) stock, C_{inorg} stock, $\delta^{13}\text{C}$, and $\delta^{15}\text{N}$ values of seagrass and mangrove sediments.

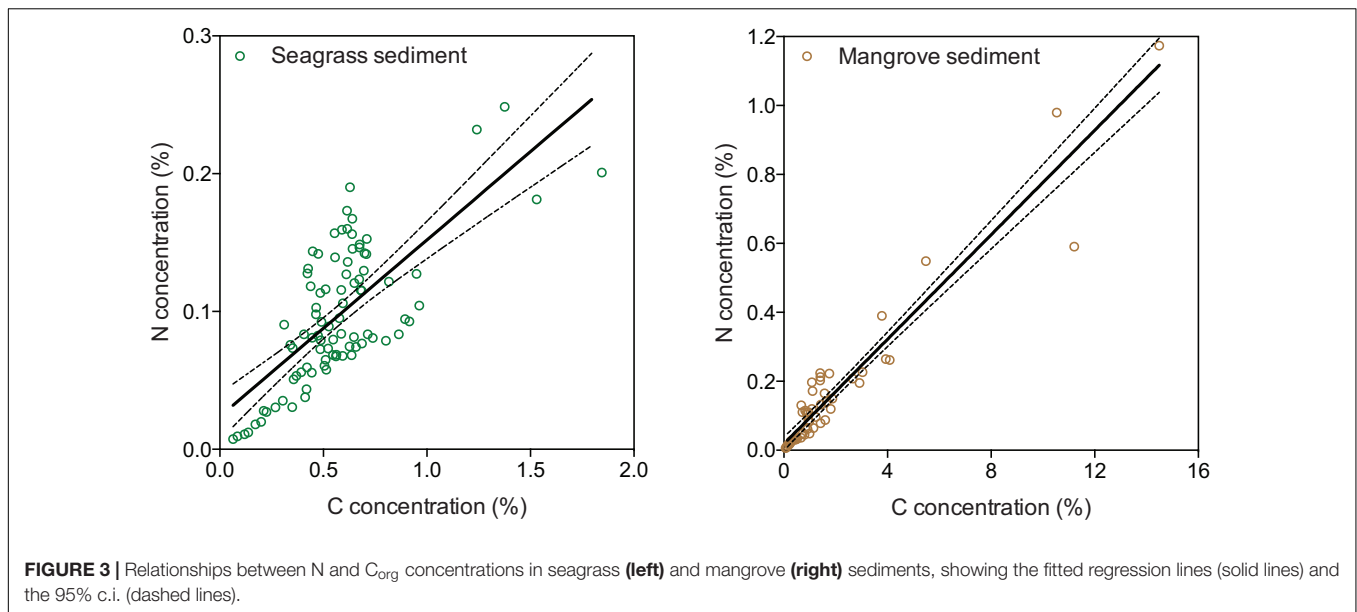
	Seagrass sediments	Mangrove sediments
C_{inorg} concentration (g C g DW sediment $^{-1}$)	0.088 \pm 0.005 0.002–0.111 (31)	0.081 \pm 0.007 0.006–0.124 (16)
C_{org} concentration (%)	0.59 \pm 0.05 0.1–1.69 (31)	1.85 \pm 0.42 0.46–6.6 (16)
N concentration (%)	0.11 \pm 0.01 0.01–0.24 (31)	0.18 \pm 0.04 0.03–0.64 (16)
C/N ratio	6.37 \pm 0.31 3.81–10.29 (27)	11.1 \pm 0.95 6.63–16.4 (12)
Bulk density (g DW sediment cm^{-3})	1.16 \pm 0.04 0.6–1.51 (31)	0.96 \pm 0.04 0.72–1.23 (16)
C_{org} stock (g C m^{-2})	718.8 \pm 37.7 385.1–1276 (27)	1454 \pm 139.7 995.8–2559 (12)
N_{org} Stock (g N m^{-2})	144.2 \pm 9.98 61.67–262.3 (27)	160.4 \pm 16.29 82.95–265.6 (12)
C_{inorg} stock (g C m^{-2})	10861 \pm 686.6 360.9–15302 (31)	8644 \pm 882.9 633.1–14218 (16)
$\delta^{13}\text{C}$ (‰)	-13.36 ± 0.40 -21.52 – 10.49 (28)	-21.52 ± 0.57 -24.71 – 16.27 (16)
$\delta^{15}\text{N}$ (‰)	0.91 ± 0.24 -2.01 – 2.72 (28)	1.21 ± 0.33 -0.43 – 4.97 (16)

Stocks integrated over the 10 top cm of sediment. The range of values and the number of replicates in parenthesis are indicated.



VA, United States]: USGS62 (Caffeine, $\delta^{13}\text{C} = -14.79\text{‰}$), USGS40 (glutamic acid, $\delta^{13}\text{C} = -26.39\text{‰}$), and USGS41a (L-glutamic acid enriched in ^{13}C , $\delta^{13}\text{C} = +36.55\text{‰}$). The analytical precision and accuracy of $\delta^{13}\text{C}$ measurements were ± 0.13 and $\pm 0.69\text{‰}$, respectively.

We calculated the difference in $\delta^{13}\text{C}$ and $\delta^{15}\text{N}$ between sediments and the overlying vegetation for each station, by



subtracting the $\delta^{13}C$ and $\delta^{15}N$ of primary producers from the $\delta^{13}C$ and $\delta^{15}N$ of sediments, respectively.

Finally, the relative contribution of different primary producers as potential sources of organic matter in seagrass and mangrove sediments was estimated using Bayesian mixing models (Parnell et al., 2010; Phillips et al., 2014). We run the mixing models separately for each type of sediment and we only included as potential sources those primary producers for which both $\delta^{13}C$ and $\delta^{15}N$ values were available (i.e., macroalgae blades, seagrass leaves, halophytes leaves, and mangrove leaves).

Statistical Analysis

Differences in C_{inorg} concentration, C_{org} concentration, N concentration, C/N ratio, bulk density, $\delta^{13}C$, $\delta^{15}N$, C_{org} stock, N stock, and C_{inorg} stock between seagrass and mangrove sediments were tested by the parametric unpaired *t*-test, when data follow the normality assumption, and the non-parametric Mann-Whitney test, when data did not follow the normality assumption. Data normality was checked by the Shapiro-Wilk test. Relationships between latitude and sediment parameters were assessed with linear regression analysis. Differences in the $\delta^{13}C$ of seagrass and mangrove sediments and the $\delta^{13}C$ of the overlying plants were tested by Wilcoxon matched-pairs signed rank test. Statistical analyses were performed using JMP (SAS Institute, Inc., United States) and PRISM (GraphPad Software, Inc., United States) statistical software; while Bayesian mixing models, used to constrain the likely contribution of different primary producers to seagrass and mangrove sediments, were run using the stable isotope mixing model (*simmr*) package (Parnell, 2016) in RStudio 1.2.1335 (RStudio Team, 2018).

The data set is available in the data repository Pangaea: Garcias-Bonet et al. (2018). Data set on carbon and nitrogen concentrations, stocks and stable isotope compositions ($\delta^{13}C$,

$\delta^{15}N$) in Red Sea seagrass and mangrove sediments. PANGAEA. <https://doi.pangaea.de/10.1594/PANGAEA.895644>.

RESULTS

Sediment C_{inorg} , C_{org} , and N Concentrations

The C_{inorg} concentration of seagrass and mangrove sediments was 0.09 ± 0.005 and 0.08 ± 0.007 g C_{inorg} g DW sediment⁻¹, respectively (Table 1); with no significant differences between sediment types (Mann-Whitney test, $U = 183$, $p > 0.05$).

The C_{org} and N concentrations of seagrass and mangrove sediments ranged broadly across the Red Sea, particularly for mangrove sediments. In seagrass sediments, C_{org} and N concentrations ranged from 0.1 to 1.69% DW and from 0.01 to 0.24% DW, respectively. In mangrove sediments, C_{org} and N concentrations ranged from 0.46 to 6.6% DW and from 0.03 to 0.64% DW, respectively (Figure 2 and Table 1). The C_{org} concentration was higher in mangrove ($1.85 \pm 0.42\%$) than in seagrass ($0.59 \pm 0.05\%$) sediments (Mann-Whitney test, $U = 71$, $p < 0.0001$). However, seagrass and mangrove sediments did not have significantly different N concentrations (0.11 ± 0.01 and $0.18 \pm 0.04\%$, respectively; Mann-Whitney test, $U = 169$, $p > 0.05$). The sediment N concentration increased linearly with that of C_{org} in seagrass ($Y = 0.13X + 0.02$, $R^2 = 0.51$, $p < 0.0001$, Figure 3A), and mangrove ($Y = 0.08X + 0.02$, $R^2 = 0.92$, $p < 0.0001$, Figure 3B) sediments, with significant difference in the slopes between seagrass and mangrove sediments (ANCOVA, $F_{2,142} = 13.34$, $p < 0.0001$). N concentration tended to be higher, for a given C_{org} concentration, in seagrass compared to mangrove sediments. This implies significantly higher C/N ratios for mangrove (11.10 ± 0.95) than for seagrass (6.37 ± 0.31) sediments (Figure 2 and Table 1, Mann-Whitney test, $U = 22$, $p < 0.0001$). Bulk

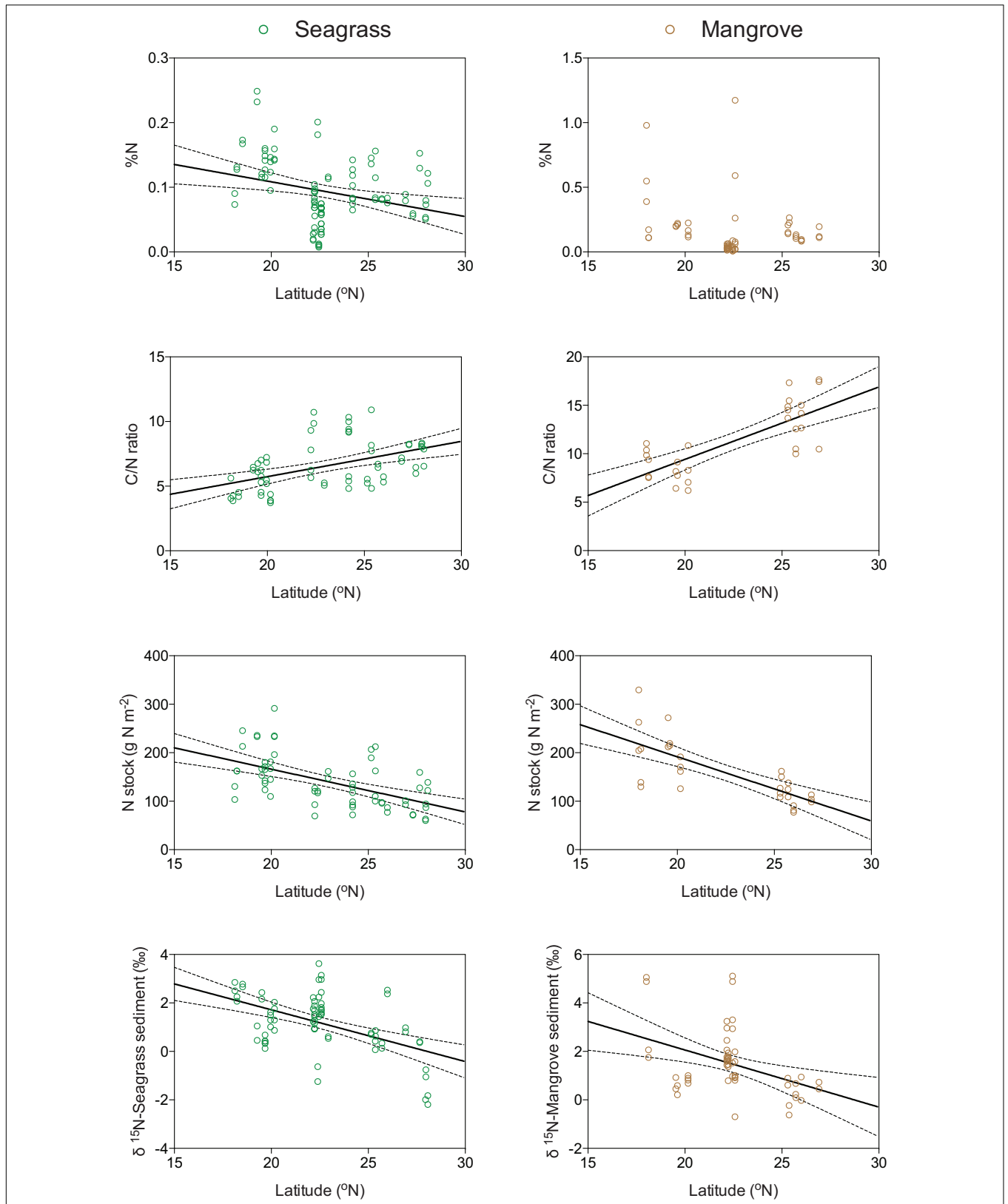
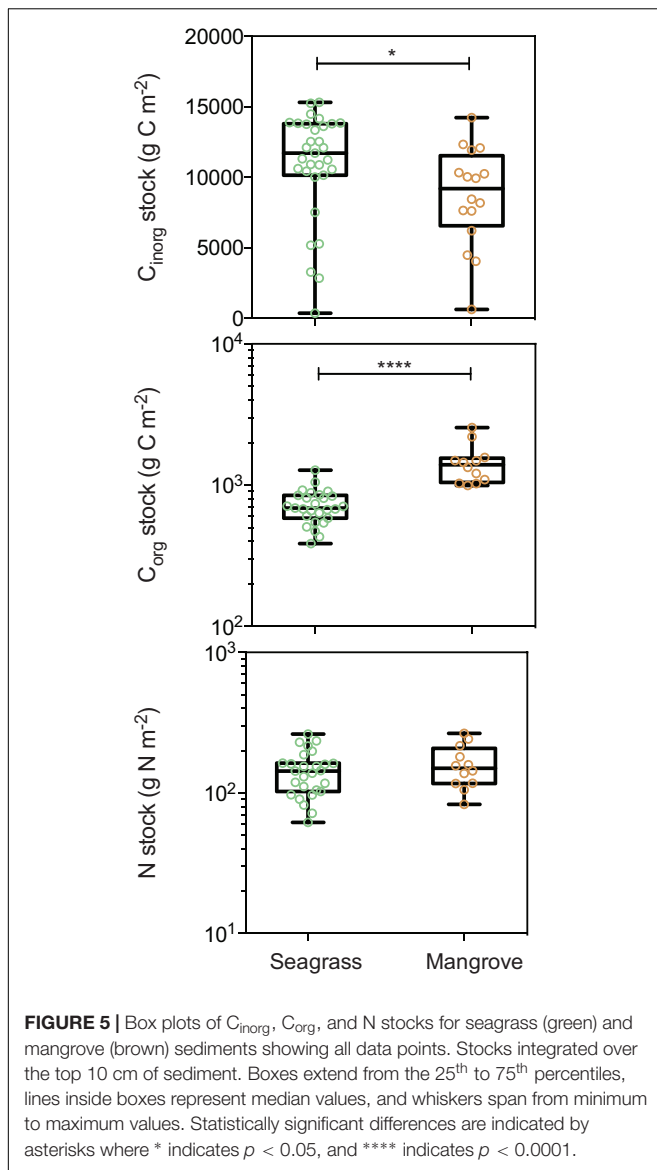
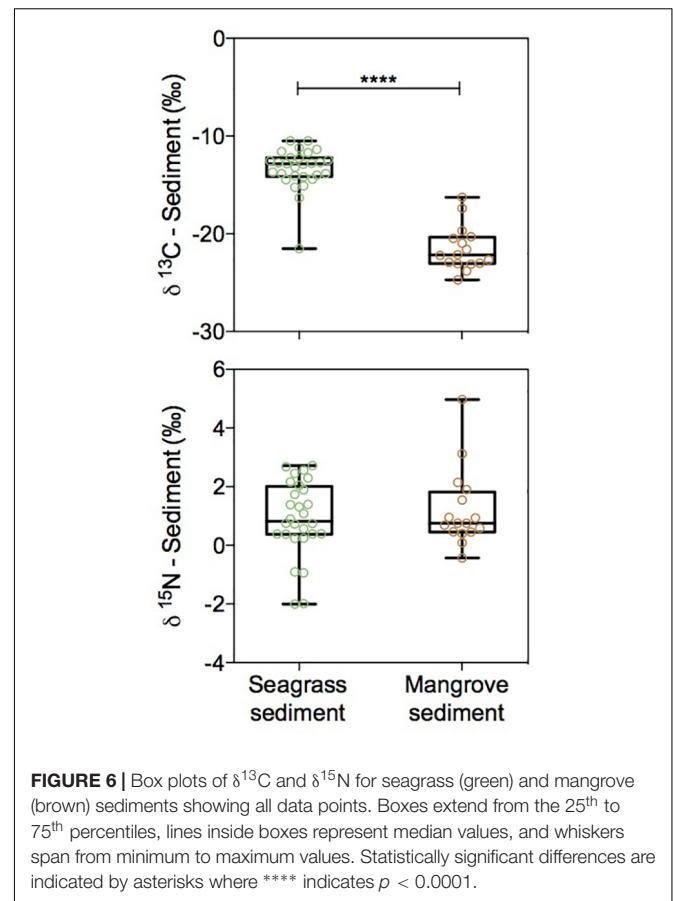


FIGURE 4 | Relationship between latitude and the N concentration, the C/N ratio, the N stock over the top 10 cm of sediment, and the $\delta^{15}\text{N}$ composition of seagrass (green) and mangrove (brown) sediments. The solid lines represent the linear regression \pm 95% c.i. (dashed lines).



density was higher in seagrass (1.16 ± 0.04 g DW sediment cm^{-3}) compared to mangrove (0.96 ± 0.04 g DW sediment cm^{-3}) sediments (**Figure 2** and **Table 1**, Unpaired t -test, $t_{45} = 3.182$, $p < 0.01$).

There was, as hypothesized, a trend for N concentration to decrease from south to north (**Figure 4**) in seagrass ($Y = -0.005X + 0.22$, $R^2 = 0.08$; $p < 0.01$), although this relationship was not significant for mangrove sediments ($R^2 = 0.05$; $p > 0.05$), which showed high variability in sediment N concentrations across mangrove stands for any one latitude (**Figure 4**). However, C_{org} concentration did not show any latitudinal trend in seagrass ($R^2 = 0.01$; $p > 0.05$) and mangrove ($R^2 = 0.01$; $p > 0.05$) sediments. Yet, the C/N ratio increased from north to south for both seagrass ($Y = 0.27X + 0.28$, $R^2 = 0.23$; $p < 0.0001$) and mangrove ($Y = 0.75X - 5.52$, $R^2 = 0.58$; $p < 0.0001$) sediments (**Figure 4**).



Sediment C_{inorg} , C_{org} , and N Stocks

Seagrass sediments contained higher C_{inorg} stocks integrated over the top 10 cm than mangrove sediments (**Figure 5** and **Table 1**, Mann–Whitney test, $U = 143$, $p < 0.05$). Mangrove C_{org} stocks exceeded, on average, twofold those in seagrass meadows (**Figure 5** and **Table 1**, Mann–Whitney test, $U = 8$, $p < 0.0001$). However, mangrove sediments contained similar N stocks than seagrass sediments (**Figure 5** and **Table 1**, Mann–Whitney test, $U = 136$, $p > 0.05$). Sediment N stocks decreased from south to north in seagrass ($Y = -8.81 + 342.4$, $R^2 = 0.31$; $p < 0.0001$) and in mangrove ($Y = -13.25X + 456.6$, $R^2 = 0.56$; $p < 0.0001$) sediments (**Figure 4**). However, C_{org} stocks did not show any latitudinal trend in seagrass ($R^2 = 0.06$; $p > 0.05$) and mangrove ($R^2 = 0.05$; $p > 0.05$) sediments.

Sediment C and N Stable Isotope Compositions

The isotopic signature of C_{org} in seagrass sediments was enriched in ^{13}C relative to that of mangrove sediments ($\delta^{13}C = -13.36 \pm 0.40$ and $-21.52 \pm 0.57\text{‰}$, respectively; Mann–Whitney test, $U = 7$, $p < 0.0001$), while sediment N isotopic signatures were comparable between the two habitats ($\delta^{15}N = 0.91 \pm 0.24$ and $1.21 \pm 0.33\text{‰}$ in seagrass and mangrove, respectively; **Figure 6** and **Table 1**). C_{org} isotope signatures in seagrass sediments were independent of latitude in seagrass

and mangrove sediments, while N isotopic composition became lighter from south to north in both seagrass ($Y = -0.21X + 5.99$, $R^2 = 0.26$; $p < 0.0001$) and mangrove ($Y = -0.24X + 6.78$, $R^2 = 0.16$; $p < 0.01$) sediments (Figure 4).

Comparison of C and N Stable Isotope Compositions of Seagrass and Mangrove Sediments and Red Sea Primary Producers

The $\delta^{13}\text{C}$ (\pm SD) of Red Sea primary producers compiled here ranged broadly from $-26.59 \pm 1.06\text{‰}$ in mangrove leaves to $-7.73 \pm 1.48\text{‰}$ in seagrass leaves, with intermediate values for seston, halophytes leaves, microbial mats, and macroalgae blades (Table 2). Similarly, the $\delta^{15}\text{N}$ (\pm SD) of Red Sea primary producers ranged from $0.20 \pm 2.94\text{‰}$ in seagrass leaves to $4.19 \pm 2.91\text{‰}$ in halophytes leaves, while mangrove leaves and macroalgae blades had similar mean values (1.72 ± 2.30 and $1.74 \pm 1.59\text{‰}$, respectively; Table 2). No $\delta^{15}\text{N}$ data available for seston and microbial mats.

When comparing the stable isotope compositions of sediments and the overlying vegetation found at each station, seagrass sediments showed lighter C_{org} isotopic composition than the leaves of overlying seagrass plants (mean $\delta^{13}\text{C} = -13.57 \pm 0.40$ and $-7.69 \pm 0.16\text{‰}$, respectively; Wilcoxon matched-pairs signed rank test, $p < 0.0001$), resulting in an average shift of $-6.17 \pm 0.4\text{‰}$ between the two compartments. Mangrove sediments tended to have isotopically heavier $\delta^{13}\text{C}$ than the overlying mangrove leaves at each station (mean $\delta^{13}\text{C} = -21.52 \pm 0.57$ and $-26.64 \pm 0.20\text{‰}$, respectively; Wilcoxon matched-pairs signed rank test, $p < 0.0001$), resulting in an average shift of $+5.12 \pm 0.45\text{‰}$ between the two compartments (Supplementary Figures S1, S2). However, the $\delta^{13}\text{C}$ of seagrass sediments did not differ significantly from that of overlying macroalgae at each station with mean $\delta^{13}\text{C} = -13.44 \pm 0.45\text{‰}$ (Wilcoxon matched-pairs signed rank test, $p > 0.05$; difference $-0.93 \pm 0.96\text{‰}$).

Seagrass and mangrove sediments and overlying plant canopies at each station had similar mean N isotopic compositions ($\delta^{15}\text{N} = 0.91 \pm 0.24$ and $1.21 \pm 0.33\text{‰}$ in seagrass and mangrove sediments, respectively; $\delta^{15}\text{N} = -0.25 \pm 0.56$ and $1.37 \pm 0.52\text{‰}$ in seagrass and mangrove leaves, respectively; Supplementary Figure S1).

TABLE 2 | Mean (\pm SD) $\delta^{13}\text{C}$ and $\delta^{15}\text{N}$ of potential sources for Red Sea seagrass and mangrove sediments.

Primary producers	$\delta^{13}\text{C}$ (‰)	$\delta^{15}\text{N}$ (‰)	Source
Macroalgae blades	-13.38 ± 4.13	1.74 ± 1.59	Duarte et al., 2018
Seagrass leaves	-7.73 ± 1.48	0.20 ± 2.94	Duarte et al., 2018
Halophyte leaves	-24.21 ± 6.25	4.19 ± 2.91	Duarte et al., 2018
Mangrove leaves	-26.59 ± 1.06	1.72 ± 2.30	Duarte et al., 2018
Seston	-25.43 ± 1.72	-	Duarte et al., 2018
Microbial mats	-15.03 ± 0.43	-	This study

In bold, primary producers used as potential sources to estimate their contribution to sediments in Bayesian mixing models.

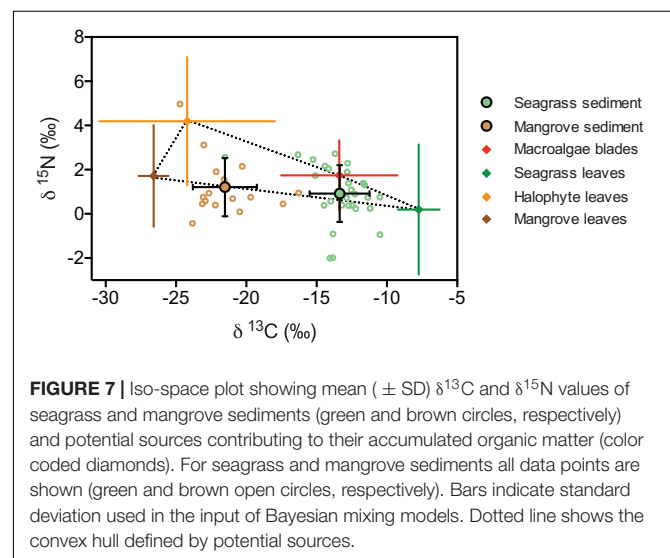
Potential Contribution of Red Sea Primary Producers to Seagrass and Mangrove Sediments

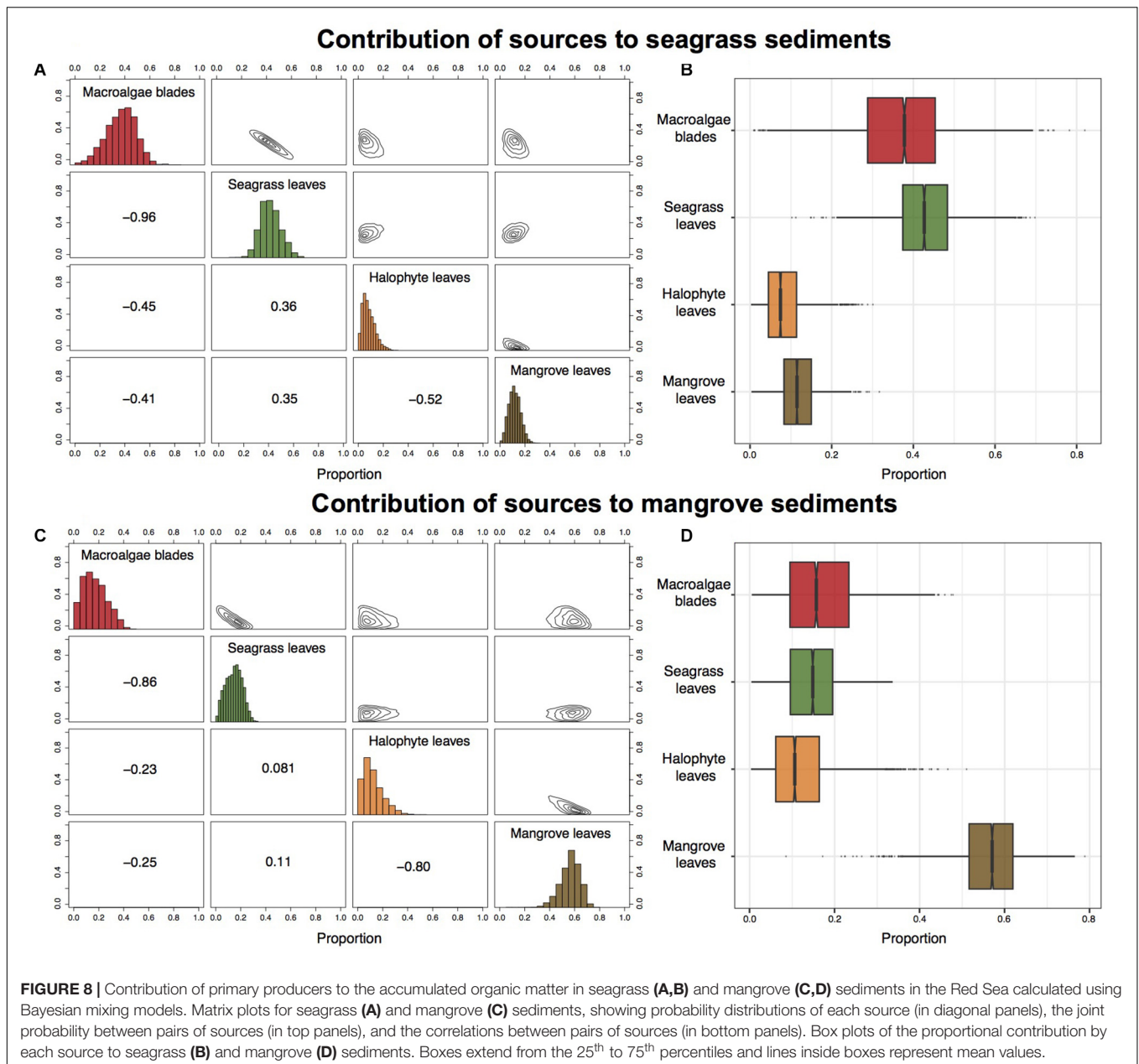
Mean $\delta^{13}\text{C}$ and $\delta^{15}\text{N}$ values of seagrass and mangrove sediments laid within the convex hull defined by $\delta^{13}\text{C}$ and $\delta^{15}\text{N}$ mean values of primary producers (Figure 7). The Bayesian mixing models identified different primary producers as main sources of organic matter in seagrass and mangrove sediments (Figure 8 and Table 3). Seagrass leaves and macroalgae blades were the major potential contributors in seagrass sediments (mean \pm SD proportion = 0.43 ± 0.08 and 0.37 ± 0.12 , respectively); while mangrove and halophytes leaves had a minor contribution. Mangrove leaves were the main potential contributors in mangrove sediments (mean \pm SD proportion = 0.56 ± 0.08), with minor contributions of macroalgae blades, seagrass leaves and halophytes leaves (Figure 8 and Table 3).

DISCUSSION

Red Sea Sediment Stocks

Seagrass and mangrove sediments in the Red Sea are carbonate-rich compared to previous reports (Mazarrasa et al., 2015; Saderne et al., 2018). Red Sea seagrass C_{inorg} stocks in the top 10 cm of sediment ($10861 \pm 686.6 \text{ g C m}^{-2}$) are higher than previous global seagrass estimates ($6540 \pm 240 \text{ g C m}^{-2}$ in 10 cm of sediment, Mazarrasa et al., 2015) and previous estimates of central Red Sea seagrass sediments ($5700 \pm 300 \text{ g C m}^{-2}$ in 10 cm of sediment, Saderne et al., 2018). Mangrove C_{inorg} stocks in the top 10 cm of sediment ($8644 \pm 882.9 \text{ g C m}^{-2}$) are equally large, and comparable to previous data from the central Red Sea ($8900 \pm 400 \text{ g C m}^{-2}$ in 10 cm of sediment, Saderne et al., 2018). However, seagrass and mangrove sediments were depleted in C_{org} and N relative to sediments in these coastal habitats elsewhere (Donato et al., 2011; Fourqurean et al., 2012; Atwood et al., 2017), consistent





with previous reports pointing at low concentrations of C_{org} in Central Red Sea mangrove (Almahasheer et al., 2017) and seagrass (Serrano et al., 2018) sediments. The low concentration of C_{org} in Red Sea Blue Carbon habitats is partially attributable to the absence of rivers in the Red Sea, thereby limiting the supply of allochthonous C to these sediments (Almahasheer et al., 2017; Serrano et al., 2018). Indeed, arid marine ecosystems are poorly represented in global syntheses of the C_{org} stocks in Blue Carbon habitats (Almahasheer et al., 2017). Red Sea mangrove C_{org} stocks integrated over the top 10 cm of sediment ($14.5 \pm 1.4 \text{ Mg C ha}^{-1}$) are lower than mean values for mangrove sediments at the latitudinal range encompassed by the Red Sea (20 to 31 Mg C ha^{-1} in 10 cm of sediment,

Atwood et al., 2017). Similarly, Red Sea seagrass C_{org} stocks integrated over the top 10 cm of sediment ($7.2 \pm 0.4 \text{ Mg C ha}^{-1}$) are lower than mean global values (ranging from 11.5 to 82.9 Mg C ha^{-1} in 10 cm of sediment, Fourqurean et al., 2012). However, these global values are heavily skewed toward carbon-dense Mediterranean *Posidonia oceanica* meadows, and therefore likely overestimate global mean C_{org} stocks in seagrass sediments (e.g., Lavery et al., 2013). Yet, our estimates on seagrass C_{org} stocks are twofold higher than recently reported stocks for seagrasses in the Central Red Sea ($3.4 \pm 0.3 \text{ Mg C ha}^{-1}$ in 10 cm of sediment, Serrano et al., 2018). These results confirm that the general tendency for mangrove sediments to be more organic carbon-rich than seagrass sediments (McLeod et al., 2011;

TABLE 3 | Contribution of each source to the accumulated organic matter in seagrass and mangrove sediments estimated using stable isotope mixing models (*simmr*), showing mean \pm SD and 95% credible intervals in parenthesis.

Sources	Contribution to seagrass sediments	Contribution to mangrove sediments
Macroalgae blades	0.37 \pm 0.12 (0.12–0.58)	0.17 \pm 0.09 (0.03–0.37)
Seagrass leaves	0.43 \pm 0.08 (0.28–0.60)	0.15 \pm 0.07 (0.03–0.27)
Halophyte leaves	0.08 \pm 0.05 (0.02–0.20)	0.12 \pm 0.08 (0.02–0.32)
Mangrove leaves	0.12 \pm 0.05 (0.03–0.22)	0.56 \pm 0.08 (0.39–0.70)

The major contributions to each sediment are shown in bold.

Duarte et al., 2013) also applies to the arid sediments of the Red Sea, lacking riverine inputs. Since available data are reported as stocks over the top 1 m of sediment, we recalculated the fraction corresponding to 10 cm of sediment to allow comparison. This may generate uncertainties, as this assumes that the C_{org} content is relatively uniform, but is also consistent with the fact that literature estimates for seagrass sediments were mostly based on extrapolating from sediment corers well below 1 m (Fourqurean et al., 2012; Mazarrasa et al., 2015).

C_{org} and N sediment stocks were closely coupled, reflecting the stoichiometric compositions in overlying vegetation and suggesting that N supply constrains sediment C_{org} stocks. However, mangrove sediments were depleted in N, relative to C_{org} , compared to seagrass sediments. This is consistent with the generally higher C/N ratio of mangrove leaves compared to seagrass leaves (Cebrián and Duarte, 1995). As the C/N ratio of organic matter is a robust predictor of decomposition rates (Enríquez et al., 1993), high C/N ratios in mangrove leaves and sediments, compared to those in seagrass meadows, imply lower decomposition rates and, hence, higher accumulation rates in mangrove sediments relative to seagrass sediments.

A Latitudinal Gradient in Productivity Affects Sediment N in the Red Sea

The results confirmed that the south to north gradient of decreasing nutrient inputs characteristic of the Red Sea (Raitos et al., 2015) is reflected in a decrease in sediment N stocks and an increase in sediment C/N ratios from south to north. The gradient is also reflected in a tendency for the $\delta^{15}N$ isotopic ratio in sediments to decrease from south to north. This gradient suggests a shift from nitrate and nitrite delivered from the incoming Indian Ocean as N sources in the south, to nitrogen fixation, characterized by lower $\delta^{15}N$ (Peterson and Fry, 1987; Papadimitriou et al., 2005; Garcias-Bonet et al., 2016), in the absence of allochthonous sources of reactive N, toward the north. However, there was no such latitudinal trend in C_{org} stocks in seagrass and mangrove sediments, indicating that the higher nutrient supply in the southern Red Sea does not result in higher sediment C_{org} stocks. This could be explained by lower sediment C/N ratios in the Southern Red Sea resulting in higher decomposition

rates than in the comparatively N-depleted sediments in the Northern Red Sea.

Primary Producers as Sources of Sediment Organic Matter

Mean $\delta^{13}C$ of Red Sea primary producers were reported to range from highly negative for mangrove leaves to the heaviest values for seagrass leaves, with intermediate values for halophyte leaves, macroalgae blades, and seston (Duarte et al., 2018). In addition, sampled microbial mats showed intermediate mean $\delta^{13}C$ ($-15.03 \pm 0.25\%$), similar to previously reported values for these communities (between -14.4 and -13% , Oakes and Eyre, 2014).

The difference in $\delta^{13}C$ between seagrass and mangrove sediments and their leaves suggests that other sources of carbon than habitat-forming primary producers contribute to the sediment C_{org} stocks. Stable isotope mixing models showed that in Red Sea seagrass sediments both seagrass leaves and macroalgae blades were the major contributors to the accumulated organic matter, accounting for 80% together; while in Red Sea mangrove sediments, mangrove leaves were the major contributors, with a 56%. The important contribution of sources other than the habitat-forming primary producers to sediment organic matter is consistent with previous results. For instance, Kennedy et al. (2010) reported that half of the C_{org} in seagrass sediment stocks derived from other primary producers than seagrass. Other potential sources not included in the mixing models could also contribute to the accumulated organic matter in seagrass and mangrove sediments. For instance, previous results for mangrove sediments elsewhere, pointed at an important role of microbial mats as a source of C_{org} to underlying sediments and mangrove food webs (Newell et al., 1995; Bouillon et al., 2008; Kristensen et al., 2008). Moreover, the high correlation observed between pairs of sources in both types of sediment indicated that the mixing model could not successfully distinguish between them. This is the case of macroalgae blades and seagrass leaves in seagrass sediments, which were strongly negatively correlated (-0.96); indicating that if macroalgae blades contributed to seagrass sediments at the top of their outcome probability range, most likely seagrass leaves contributed at the bottom of their probability range. Similarly, in mangrove sediments, we observed two pairs of sources strongly negatively correlated: macroalgae blades – seagrass leaves (-0.86) and halophytes leaves – mangrove leaves (-0.80).

Nitrogen sources to sediments include nitrate advected with the inflow of Indian Ocean waters ($\delta^{15}N = +6\%$, Brandes et al., 1998), and N fixation ($\delta^{15}N$ near 0, Peterson and Fry, 1987). The $\delta^{15}N$ of sediment N stocks in the south is consistent with a dominance of nitrate as the main source of N, while the $\delta^{15}N$ of sediment N stocks in the north points at a prevalence of N fixation. However, due to diagenetic processes, the isotopic signature of sediment organic matter might change during decomposition (Macko et al., 1994). Therefore, the identification of potential sources and contributions to seagrass

and mangrove sediments based on stable isotopes needs to be interpreted with care.

CONCLUSION

C_{org} and N stocks in seagrass and mangrove sediments were low, particularly for seagrass sediments, in the Eastern Red Sea. Whereas sediment N concentration and stocks decreased from south to north in the Red Sea, C_{org} stocks did not change consistently with latitude. Seagrass and mangrove leaves largely contributed to the accumulated organic matter in their sediments, with additional contribution from macroalgae in seagrass sediments. These results represent a major advancement for sediment C_{org} , C_{inorg} , and N stock assessments of seagrass and mangrove in the Red Sea, providing a background for Blue Carbon programs in the region. By filling a regional gap of knowledge, these data also help to balance global Blue Carbon assessments.

AUTHOR CONTRIBUTIONS

NG-B and CD analyzed the data and wrote the first draft of the manuscript. All authors designed the research, conducted

sampling and analyses, contributed to writing the manuscript and approved the submission.

FUNDING

This research was funded by the King Abdullah University of Science and Technology through base-line funding to CD and CCF funding to the Red Sea Research Center.

ACKNOWLEDGMENTS

We thank Vijayalaxmi Dasari, Isidora Mendia Saez de Zuazola, Mongi Ennasri, Nadia Haj Salah, and Arsenio Granados for support in the laboratory analysis and CMOR, Amr Gusti, Mohammed Aljehdali, and the R. V. Thuwal crew for logistical support.

SUPPLEMENTARY MATERIAL

The Supplementary Material for this article can be found online at: <https://www.frontiersin.org/articles/10.3389/fmars.2019.00267/full#supplementary-material>

REFERENCES

- Almahasheer, H., Duarte, C. M., and Irigoien, X. (2016a). Nutrient limitation in central red sea mangroves. *Front. Mar. Sci.* 3:271. doi: 10.1038/s41598-017-10424-9
- Almahasheer, H., Duarte, C. M., and Irigoien, X. (2016b). Phenology and growth dynamics of *avicennia marina* in the central red sea. *Sci. Rep.* 6:37785. doi: 10.1038/srep37785
- Almahasheer, H., Serrano, O., Duarte, C. M., Arias-Ortiz, A., Masque, P., and Irigoien, X. (2017). Low carbon sink capacity of Red Sea mangroves. *Sci. Rep.* 7:9700. doi: 10.1038/s41598-017-10424-9
- Anton, A., Hendriks, I. E., Marba, N., Krause-Jensen, D., Garcias-Bonet, N., and Duarte, C. M. (2018). Iron deficiency in seagrasses and macroalgae in the red sea is unrelated to latitude and physiological performance. *Front. Mar. Sci.* 5:74. doi: 10.3389/fmars.2018.00074
- Atwood, T. B., Connolly, R. M., Almahasheer, H., Carnell, P. E., Duarte, C. M., Lewis, C. J. E., et al. (2017). Global patterns in mangrove soil carbon stocks and losses. *Nat. Clim. Change* 7:523.
- Bouillon, S., Connolly, R., and Lee, S. (2008). Organic matter exchange and cycling in mangrove ecosystems: recent insights from stable isotope studies. *J. Sea Res.* 59, 44–58. doi: 10.1016/j.seares.2007.05.001
- Brandes, J. A., Devol, A. H., Yoshinari, T., Jayakumar, D., and Naqvi, S. (1998). Isotopic composition of nitrate in the central Arabian Sea and eastern tropical North Pacific: a tracer for mixing and nitrogen cycles. *Limnol. Oceanogr.* 43, 1680–1689. doi: 10.4319/lo.1998.43.7.1680
- Cebrián, J., and Duarte, C. M. (1995). Plant growth-rate dependence of detrital carbon storage in ecosystems. *Science* 268, 1606–1608. doi: 10.1126/science.268.5217.1606
- Chaidez, V., Dreano, D., Agusti, S., Duarte, C. M., and Hoteit, I. (2017). Decadal trends in Red Sea maximum surface temperature. *Sci. Rep.* 7:8144. doi: 10.1038/s41598-017-08146-z
- Cusack, M., Saderne, V., Arias-Ortiz, A., Masqué, P., Krishnakumar, P., Rabaoui, L., et al. (2018). Organic carbon sequestration and storage in vegetated coastal habitats along the western coast of the Arabian Gulf. *Environ. Res. Lett.* 13, 074007. doi: 10.1088/1748-9326/aac899
- Donato, D. C., Kauffman, J. B., Murdiyarso, D., Kurnianto, S., Stidham, M., and Kanninen, M. (2011). Mangroves among the most carbon-rich forests in the tropics. *Nat. Geosci.* 4:293.
- Duarte, C. M. (2017). Reviews and syntheses: hidden forests, the role of vegetated coastal habitats in the ocean carbon budget. *Biogeosciences* 14:301. doi: 10.5194/bg-14-301-2017
- Duarte, C. M., Delgado-Huertas, A., Anton, A., Carrillo-de-Albornoz, P., Lopez Sandoval, D. C., Agusti, S., et al. (2018). Stable isotope ($\delta^{13}C$, $\delta^{15}N$, $\delta^{18}O$, δD) composition and nutrient concentration of red sea primary producers. *Front. Mar. Sci.* 5:298. doi: 10.3389/fmars.2018.00298
- Duarte, C. M., Losada, I. J., Hendriks, I. E., Mazarrasa, I., and Marba, N. (2013). The role of coastal plant communities for climate change mitigation and adaptation. *Nat. Clim. Change* 3, 961–968. doi: 10.1038/nclimate1970
- Enriquez, S., Duarte, C. M., and Sand-Jensen, K. (1993). Patterns in decomposition rates among photosynthetic organisms: the importance of detritus C: N: P content. *Oecologia* 94, 457–471. doi: 10.1007/BF00566960
- Fourqurean, J. W., Duarte, C. M., Kennedy, H., Marbà, N., Holmer, M., Mateo, M. A., et al. (2012). Seagrass ecosystems as a globally significant carbon stock. *Nat. Geosci.* 5, 505–509. doi: 10.1002/eap.1489
- Garcias-Bonet, N., Arrieta, J. M., Duarte, C. M., and Marba, N. (2016). Nitrogen-fixing bacteria in Mediterranean seagrass (*Posidonia oceanica*) roots. *Aquat. Bot.* 131, 57–60. doi: 10.1016/j.aquabot.2016.03.002
- Garcias-Bonet, N., and Duarte, C. M. (2017). Methane production by seagrass ecosystems in the Red Sea. *Front. Mar. Sci.* 4:340. doi: 10.3389/fmars.2017.00340
- Garcias-Bonet, N., Delgado Huertas, A., Carrillo-de-Albornoz, P., Anton, A., Almahasheer, H., Marbà, N., et al. (2018). Data set on carbon and nitrogen concentrations, stocks, and isotopic composition in Red Sea seagrass and mangrove sediments. PANGAEA. doi: 10.1594/PANGAEA.895644
- Hedges, J. I., and Stern, J. H. (1984). Carbon and nitrogen determinations of carbonate-containing solids. *Limnol. Oceanogr.* 29, 657–663. doi: 10.4319/lo.1984.29.3.0657

- Kennedy, H., Beggins, J., Duarte, C. M., Fourqurean, J. W., Holmer, M., Marbà, N., et al. (2010). Seagrass sediments as a global carbon sink: isotopic constraints. *Global Biogeochem. Cycles* 24, GB4026.
- Kennedy, P., Kennedy, H., and Papadimitriou, S. (2005). The effect of acidification on the determination of organic carbon, total nitrogen and their stable isotopic composition in algae and marine sediment. *Rapid Commun. in Mass Spectrom.* 19, 1063–1068. doi: 10.1002/rcm.1889
- Kindeberg, T., Ørberg, S. B., Röhr, M. E., Holmer, M., and Krause-Jensen, D. (2018). Sediment stocks of carbon, nitrogen, and phosphorus in danish eelgrass meadows. *Front. Mar. Sci.* 5:474. doi: 10.3389/fmars.2018.00474
- Kristensen, E., Bouillon, S., Dittmar T., and Marchand, C. (2008). Organic carbon dynamics in mangrove ecosystems: a review. *Aquatic botany* 89, 201–219. doi: 10.1016/j.aquabot.2007.12.005
- Lavery, P. S., Mateo, M. -Á, Serrano, O., and Rozaimi, M. (2013). Variability in the carbon storage of seagrass habitats and its implications for global estimates of blue carbon ecosystem service. *PLoS One* 8:e73748. doi: 10.1371/journal.pone.0073748
- Macko, S. A., Engel, M. H., and Qian, Y. (1994). Early diagenesis and organic matter preservation – a molecular stable carbon isotope perspective. *Chem. Geol.* 114, 365–379. doi: 10.1016/0009-2541(94)90064-7
- Macreadie, P. I., Baird, M. E., Trevathan-Tackett, S. M., Larkum, A. W. D., and Ralph, P. J. (2014). Quantifying and modelling the carbon sequestration capacity of seagrass meadows—a critical assessment. *Mar. Pollut. Bull.* 83, 430–439. doi: 10.1016/j.marpolbul.2013.07.038
- Mazarrasa, I., Marbà, N., Lovelock C. E., Serrano, O., Lavery, P., Fourqurean, J., et al. (2015). Seagrass meadows as a globally significant carbonate reservoir. *Biogeosci.* 12, 4993–5003. doi: 10.5194/bg-12-4993-2015
- McLeod, E., Chmura, G. L., Bouillon, S., Salm, R., Björk, M., Duarte, C. M., et al. (2011). A blueprint for blue carbon: toward an improved understanding of the role of vegetated coastal habitats in sequestering CO₂. *Front. Ecol. Environ.* 9:552–560. doi: 10.1890/110004
- Müller, G., and Gastner, M. (1971). *The 'Karbonat-Bombe', a simple device for the determination of carbonate content in sediment, soils, and other materials.* *Neues Jahrbuch für Mineralogie-Monatshefte* Bremerhaven, Monatshefte, 466–469.
- Nellemann, C., Corcoran, E., Duarte, C. M., Valdés, L., De Young, C., Fonseca, L., (Eds) et al. (2009). *Blue Carbon. A Rapid Response Assessment.* Nairobi, United Nations Environment Programme, GRID-Arendal
- Newell, R., Marshall, N., Sasekumar, A., and Chong, V. (1995). Relative importance of benthic microalgae, phytoplankton, and mangroves as sources of nutrition for penaeid prawns and other coastal invertebrates from Malaysia. *Mar. Biol.* 123, 595–606. doi: 10.1007/bf00349238
- Oakes, J. M., and Eyre, B. D. (2014). Transformation and fate of microphytobenthos carbon in subtropical, intertidal sediments: potential for long-term carbon retention revealed by ¹³C-labeling. *Biogeosciences* 11, 1927–1940. doi: 10.5194/bg-11-1927-2014
- Papadimitriou, S., Kennedy, H., Kennedy, D. P., Duarte, C. M., and Marbà, N. (2005). Sources of organic matter in seagrass-colonized sediments: a stable isotope study of the silt and clay fraction from *Posidonia oceanica* meadows in the western Mediterranean. *Org. Geochem.* 36, 949–961. doi: 10.1016/j.orggeochem.2004.12.002
- Parnell, A. (2016). *Simmr: a stable isotope mixing model. R package version 0.3.* <https://CRAN.R-project.org/package=simmr> (accessed January 19, 2016).
- Parnell, A. C., Inger, R., Bearhop, S., and Jackson, A. L. (2010). Source partitioning using stable isotopes: coping with too much variation. *PLoS One* 5:e9672. doi: 10.1371/journal.pone.0009672
- Peterson, B. J., and Fry, B. (1987). Stable isotopes in ecosystem studies. *Ann. Rev. Ecol. System.* 18, 293–320. doi: 10.1146/annurev.ecolsys.18.1.293
- Phillips, D. L., Inger, R., Bearhop, S., Jackson, A. L., Moore, J. W., Parnell, A. C., et al. (2014). Best practices for use of stable isotope mixing models in food-web studies. *Can. J. Zool.* 92, 823–835. doi: 10.1139/cjz-2014-0127
- Raitsos, D. E., Pradhan, Y., Brewin, R. J. W., Stenchikov, G., and Hoteit, I. (2013). Remote Sensing the Phytoplankton Seasonal Succession of the Red Sea. *PLoS One* 8:e64909. doi: 10.1371/journal.pone.0064909
- Raitsos, D. E., Yi, X., Platt, T., Racault, M. F., Brewin, R. J., Pradhan, Y., et al. (2015). Monsoon oscillations regulate fertility of the Red Sea. *Geophys. Res. Lett.* 42, 855–862. doi: 10.1002/2014gl062882
- RStudio Team. (2018). *RStudio: Integrated Development for R.* Boston, MA: RStudio, Inc.
- Ryba, S. A., and Burgess, R. M. (2002). Effects of sample preparation on the measurement of organic carbon, hydrogen, nitrogen, sulfur, and oxygen concentrations in marine sediments. *Chemosphere* 48, 139–147. doi: 10.1016/s0045-6535(02)00027-9
- Saderne, V., Cusack, M., Almahasheer, H., Serrano, O., Masqué, P., Arias-Ortiz, A., et al. (2018). Accumulation of carbonates contributes to coastal vegetated ecosystems keeping pace with sea level rise in an arid region (Arabian Peninsula). *J. Geophys. Res.: Biogeosci.* 123, 1498–1510. doi: 10.1029/2017jg004288
- Sea, M. A., Garcias-Bonet, N., Saderne, V., and Duarte, C. M. (2018). Carbon dioxide and methane fluxes at the air–sea interface of Red Sea mangroves. *Biogeosciences* 15, 5365–5375. doi: 10.5194/bg-15-5365-2018
- Serrano, O., Almahasheer, H., Duarte, C. M., and Irigoien, X. (2018). Carbon stocks and accumulation rates in Red Sea seagrass meadows. *Sci. Rep.* 8:15037. doi: 10.1038/s41598-018-33182-33188

Conflict of Interest Statement: The authors declare that the research was conducted in the absence of any commercial or financial relationships that could be construed as a potential conflict of interest.

Copyright © 2019 Garcias-Bonet, Delgado-Huertas, Carrillo-de-Albornoz, Anton, Almahasheer, Marbà, Hendriks, Krause-Jensen and Duarte. This is an open-access article distributed under the terms of the Creative Commons Attribution License (CC BY). The use, distribution or reproduction in other forums is permitted, provided the original author(s) and the copyright owner(s) are credited and that the original publication in this journal is cited, in accordance with accepted academic practice. No use, distribution or reproduction is permitted which does not comply with these terms.