



OPEN ACCESS

EDITED BY

Holger Kirscht,
International Centre of Insect Physiology
and Ecology (ICIPE), Kenya

REVIEWED BY

Hannah J Penn,
Sugarcane Research Unit (USDA),
United States
Farman Ullah,
China Agricultural University, China

*CORRESPONDENCE

Martin Bollazzi
✉ bollazzi@fagro.edu.uy

SPECIALTY SECTION

This article was submitted to
Insect Economics,
a section of the journal
Frontiers in Insect Science

RECEIVED 17 November 2022

ACCEPTED 17 March 2023

PUBLISHED 05 April 2023

CITATION

Sabattini J and Bollazzi M (2023) Herbivory
by *Atta vollenweideri*: Reviewing the
significance of grass-cutting ants as
a pest of livestock.
Front. Insect Sci. 3:1101445.
doi: 10.3389/finsc.2023.1101445

COPYRIGHT

© 2023 Sabattini and Bollazzi. This is an
open-access article distributed under the
terms of the [Creative Commons Attribution
License \(CC BY\)](https://creativecommons.org/licenses/by/4.0/). The use, distribution or
reproduction in other forums is permitted,
provided the original author(s) and the
copyright owner(s) are credited and that
the original publication in this journal is
cited, in accordance with accepted
academic practice. No use, distribution or
reproduction is permitted which does not
comply with these terms.

Herbivory by *Atta vollenweideri*: Reviewing the significance of grass-cutting ants as a pest of livestock

Julian Sabattini¹ and Martin Bollazzi^{2*}

¹Consejo Nacional de Investigaciones Científicas y Técnicas, Cátedra de Ecología de los Sistemas Agropecuarios, Facultad de Ciencias Agropecuarias, Universidad Nacional de Entre Ríos, Oro Verde, Argentina, ²Entomología, Facultad de Agronomía, Universidad de la República, Montevideo, Uruguay

The grass-cutting ant *Atta vollenweideri* is well suited for studies examining the negative effect leaf-cutting ants have on livestock production in South American grasslands because they forage on the same plants as cattle. This study investigated the impact of *A. vollenweideri* on livestock production in Argentinean rangelands. First, we assessed *A. vollenweideri* herbivory rates and its economic injury level (EIL). Second, using satellite imagery in a region covering 15,000 ha, we estimated the percentage of this area that surpassed the calculated EIL. Results showed that *A. vollenweideri* consumed approximately 276 kg of dry plant weight/ha/year, foraging mostly on grasses (70%). Additionally, ants cut 25% of herbs and 5% of trees. In summer and autumn, ants consumed more grasses, while in winter and spring, herbs and trees were also significantly cut. Ants consumed 7% of the forage demand needed to raise a calf according to the management regime applied by farmers. Our calculated EIL (5.85 nests/ha) falls in the range of previous studies. Colonies were absent in 93.6% of the surveyed area, while their density was below the EIL in 6.2% of the area. *A. vollenweideri* populations surpassed the EIL in only 0.2% of the area, which corresponds to 2.6% of the locations holding colonies. These results question the perception that *Atta* leaf-cutting ants are a pest of livestock production. Although ants consume a small percentage of cattle's forage demand, evidence that ants and cattle are competing in the few cases in which density surpasses the EIL is arguable. First, grass-cutting ants are capable of consuming herbs and trees in addition to the grasses on which cattle mostly feed. Second, there is no evidence indicating that both are cutting the same plant portions when preferences overlap. Third, evidence suggests that ants are not displaced under high-pressure grazing regimes by cattle. In the countries where *A. vollenweideri* is present, decision makers have promulgated several acts making its control mandatory. It is time to revisit the pest status of *A. vollenweideri* and include the use of EIL as a control criterion.

KEYWORDS

leaf-cutting ants, pests, impact, livestock, rangelands, foraging

1 Introduction

Leaf-cutting ants belonging to the genera *Atta* and *Acromyrmex* are primary pests and have been considered as the insects that cause the most damage to agriculture throughout the Neotropics (1). During foraging, leaf-cutting ant workers cut and transport plant fragments, which are then used to cultivate a symbiotic fungus inside the so-called fungus chambers (2). This fungus serves as the sole food source for the colony (3). *Atta vollenweideri* (Hymenoptera: Formicidae) is well suited for studies examining the negative effect leaf-cutter ants may have on extensive livestock practices in South American grasslands. They belong to the group classified as grass-cutters together with *Atta capiguara* and *Atta bisphaerica* (4, 5). Grass-cutting ants have traditionally been seen as the main cattle competitor because they forage on the functional group on which cattle mostly feed (6). *A. vollenweideri* does not show homogenous distribution on a local scale because it tends to nest on heavy clay soils used for livestock production due to its low productivity for cropping (7–9). Table 1 summarizes a comprehensive list of studies reporting plant consumption over the last decades. To date, three publications have analyzed consumption by *A. vollenweideri* and its possible impacts on livestock. While the study carried out by Robinson and Fowler (13) reported a consumption of 868 and 924 kg of dry weight/ha/year, Jonkman (12) estimated a consumption of only 38 kg of dry weight/ha/year. Based on those results, Robinson and Fowler (13) concluded that *A. vollenweideri* consumed twice the yearly requirement of cows. However, Jonkman (12) estimated it was below 5%. Both studies, nevertheless, suffer from having estimated the consumption based on only one *A. vollenweideri* nest. Additionally, they did not cite the aerial net primary productivity (ANPP) of the habitat, which determines the

amount of net available forage source for which ants and cows should compete. The most comprehensive study was conducted by Guillade and Folgarait, who also measured ANPP and the portion consumed by cattle (14). They reported a minimum of 224 and a maximum of 1,867 kg of dry weight/ha/year, averaging 1,216 kg of dry weight/ha/year consumed by *Atta vollenweideri*. The authors concluded that competition between ants and cattle occurred only during the low-productivity periods of the year. The economic injury level for the study location was estimated at 0.29 nest/ha.

In addition to estimating consumption by ants and the pasture demands of cattle, a comprehensive estimation of competition between leaf-cutting ants and cattle should also include an estimation of nest density at a landscape scale, and not only the density of the study site where measurements have been performed. Leaf-cutting ant distribution is not homogeneous and tends to be aggregated at both local and landscape scales (7, 23, 24). When actual density at landscape scales is not determined, and the impact of leaf-cutting ants on cattle is extrapolated from the highly infested areas where consumption was measured, the negative effect of ants on livestock can be overestimated. An extrapolation to landscape level should also be carried out to properly discuss the impact of leaf-cutting ants.

Thus, this study aimed to study the potential impact of *A. vollenweideri* as a pest at both local and landscape scales. Locally, we assessed functional groups foraged by *A. vollenweideri* (grasses, shrubs, and trees) to estimate the potential impact of ants by considering the extent to which ant preferences might overlap with the known grass preference of cattle. We also calculated the impact of such overlapped consumption by considering the standard cattle management regime for the region. Second, working at a regional scale in midwestern Argentina, we

TABLE 1 Average intake by colonies of *Atta* species obtained from the literature, as well as the method applied and the number of colonies assessed.

Species	Location	Reference	Colonies	Method	Intake (kg/ha/year)
<i>Atta capiguara</i>	Brazil	Amante 1972 (10)	?	Foraging activity	1,015
<i>Atta capiguara</i>	Brazil	Forti 1985 (11)	?	Foraging activity	165
<i>Atta vollenweideri</i>	Paraguay	Jonkman 1980 (12)	1	Conversion	36
<i>Atta vollenweideri</i>	Paraguay	Robinson and Fowler 1982 (13)	1	Foraging activity	868
<i>Atta vollenweideri</i>	Paraguay	Robinson and Fowler 1982 (13)	1	Exclusion	924
<i>Atta vollenweideri</i>	Argentina	Guillade and Folgarait 2015 (14)	3	Exclusion	1,216
<i>Atta cephalotes</i>	Costa Rica	Blanton and Ewel 1985 (15)	4	Foraging activity	653
<i>Atta colombica</i>	Costa Rica	Lugo et al., 1973 (16)	1	Foraging activity	312
<i>Atta colombica</i>	Panama	Herz et al., 2007 (17)	50	Foraging activity	132.4
<i>Atta colombica</i>	Panama	Haines 1978 (18)	9	Conversion	98
<i>Atta colombica</i>	Panama	Wirth et al., 1997 (19)	2	Foraging activity	517
<i>Atta opaciceps</i>	Brazil	Siqueira et al., 2018 (20)	8	Foraging activity	597
<i>Atta opaciceps</i>	Brazil	Costa et al., 2008 (21)	8	Foraging activity	824

Only studies that provided detailed information on methods were taken into account, resulting in data for two grass-cutter ants (*A. vollenweideri* and *A. capiguara*) and three leaf-cutter ants (*A. colombica*, *A. cephalotes*, and *A. opaciceps*). The revision of data from Amante 1972 (10) conducted by Fowler, Forti, and Romagnano (22) are given instead of the values provided by the author (ca. 6,259 dry weight in kg/ha/year). The data provided by Robinson and Fowler (13) for *Atta capiguara* were not included because the authors considered them as inconclusive. A full description and discussion of methods can be found in Fowler et al. (22) and Guillade and Folgarait (14).

estimated nest density through satellite images. This was carried out to assess the percentage of the area that surpass the critical density at which *A. vollenweideri* may negatively affect production.

2 Methods

2.1 Plant consumption by colonies

At a local scale, methods were, first, aimed at assessing seasonal herbivory rates by the leaf-cutting ant *A. vollenweideri* using foraging activity methods, while considering plant functional groups. Second, we compared ant consumption with the reported forage demands of cattle and the ANPP.

We selected two sites in the province of Entre Rios, Argentina, with high-density *Atta vollenweideri* populations. “El Caraya” (-30.633356, -58.847075) has a nest density of 1.27 nest/ha, while “Santa Clara” (-31.549827, -59.677187) has a nest density of 1.63 nest/ha. Livestock have been historically bred at both sites and there were no records of agriculture or pasture improvement. Both sites possess the representative soil type Vertic Epiaqualfs (8) and were

located approximately 130 km from each other. In each site, five mature nests located far from any perturbation (i.e., roads and houses) were selected (Figure 1). Those nests had an average diameter of 7.8 m (\pm sd 1.1, $n=10$), a height of 0.45 m (\pm sd 0.16, $n=10$), and 21 active foraging trails on average (\pm sd 9.8, $n=10$), each at least 50 m long.

For each nest, three foraging trails were selected for assessing plant consumption by collecting each worker and the transported load in a 5 min period every 2 h over a 24-h period (Figure 1). Assessments were undertaken simultaneously in the three trails by three people. In site I, measurements were taken during May, July, August, and October 2016, and January and March 2017. In Site II, measurements were carried out in August, September, November, and December 2016, and January, March, April, June, and October 2017. Total daily foraging intake by the colony was assessed by multiplying the intake of one of the three measured trails over 24 h with the number of active foraging trails at the day of the measurement. This procedure was carried out for each of the three measured trails, obtaining three values of colony intake in each visit, following methods published previously (22, 25–27). Those colony intake values were averaged for the season. In total,

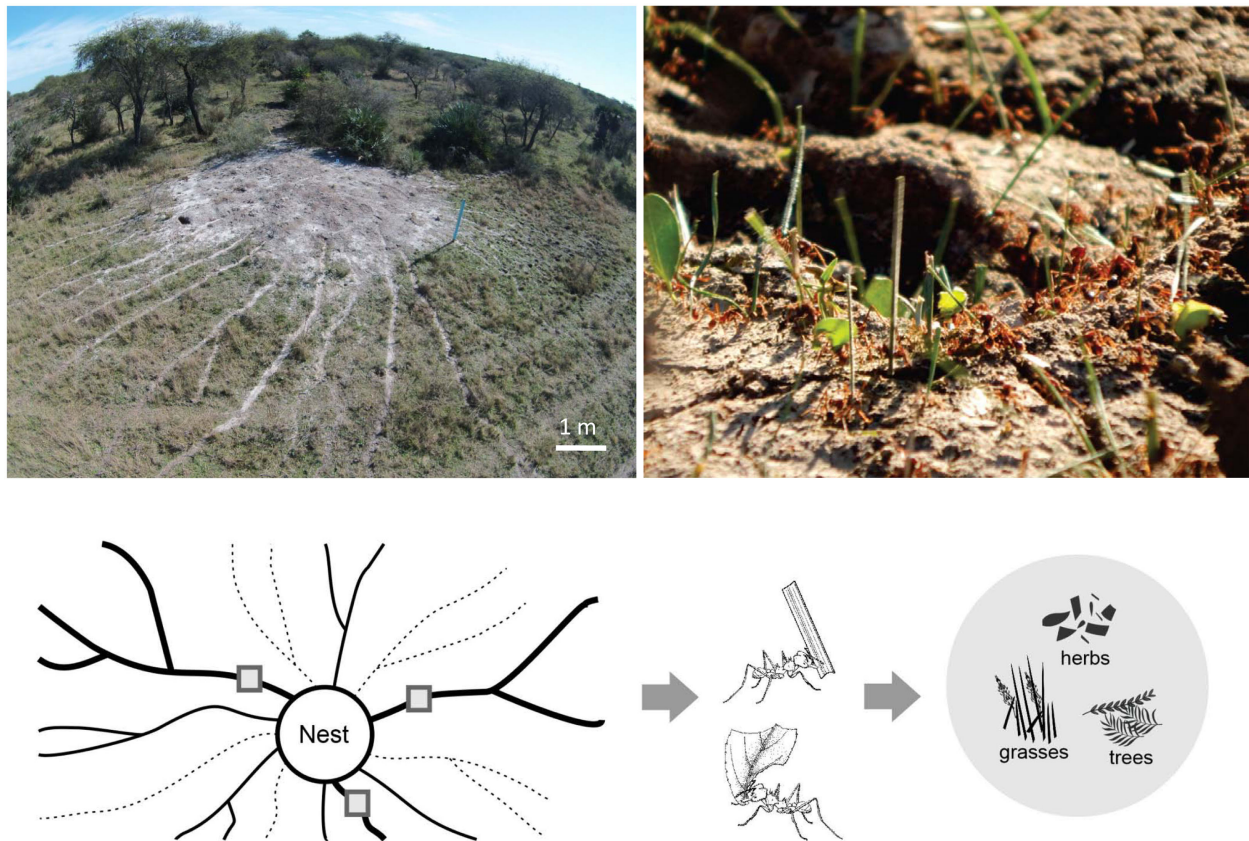


FIGURE 1

Top left: picture of an *Atta vollenweideri* nest taken by a drone at the El Caraya study site. Foraging trails can be clearly seen departing radially from the nest mound. Top right: picture showing the loads carried by *A. vollenweideri* workers entering the nest. Most loads belong to grass fragments but some of them are pieces cut from herbs and trees. See also ESM 1 for a video showing typical foraging activity in a trail. Bottom: diagram showing the methods for estimating plant consumption. At the day of measurement, foraging trails can be active (represented by continuous lines) or inactive (represented by dashed lines). Among the actives, three equidistant trails were selected (thick trails). In these trails, three collecting points were marked (grey quadrants). Three people working simultaneously collected all workers and their loads in a 5 min period every 2 h over 24 h. Loads were later classified into grasses, herbs, and trees for obtaining daily and seasonal intakes. See Methods for further details.

measurements were taken at two sites, with three trails measured for each of the five colonies per site, with a total of 30 estimations of colony seasonal intake obtained.

All collected fragments were classified into three functional groups—grasses, herbs, or trees—and later weighted to obtain mass consumption. For this, the collected loads were taken to the laboratory of the Department of Ecology at the Faculty of Agronomy, Universidad Nacional de Entre Rios, Paraná, Argentina. Once in the lab, the collected material was assigned to one of the three functional groups and dried in an oven for 48 h at 60°C, after which it was weighed at a resolution of 0.1 mg. The values of seasonal consumption, as explained above, were divided into functional groups and multiplied by the number of days of each season and nest density of the site to obtain the consumption by colonies in a hectare per season or year.

Average consumption by *A. vollenweideri* colonies was compared using a two-way repeated measures ANOVA with *season* and *functional group of consumed plants* as factors. To correct for the heterogeneity of variances of the data, given that the assumption of sphericity could not be met, we applied a Greenhouse–Geisser correction factor for the degrees of freedom and reported a corrected *F*. *Post hoc* comparisons were performed using Bonferroni correction. To assess differences among functional groups inside each season, we conducted a one-way ANOVA.

2.2 EIL calculation

To assess the degree to which *A. vollenweideri* negatively affects cattle raising, we considered the animal unit equivalent (28, 29) for a cow (CUE), which is the yearly forage demand of one mature cow of approximately 400 kg, raising a calf up to 6 months with a daily dry-matter forage allocation of 2.5% of its weight (28, 29). The commercial goal was to sell a 160-kg calf by month six. The negative impact of ants was considered against the way ants affect the carrying capacity of the site to sustain a CUE. Carrying capacity (K) was calculated considering the typical ANPP for the areas with *A. vollenweideri* nests, multiplied by the harvesting index depending on the ANPP (30), and divided by the forage demand determined by the CUE. The K to sustain a CUE is reduced by the presence of ant nests, which compete for forage, with a concomitant reduction in weight loss of the calf. Losses due to ant presence were used to calculate the economic injury level (EIL) according to Pedigo et al. (1986), where $EIL = C/VDK$. The cost of control (C) of a single nest included the time needed to reach the area, locate the nests, and apply the baits, and the cost of baits (\$41 USD/ha considering 1 nest/ha). The market value (V) was set depending on the local sale price of a calf (USD/kg) (31). The loss in final product weight (D) caused by a nest (kg/nest) was defined in this study (see Results). Finally, K represents the percentage of control efficiency, reported as approximately 0.9 for *A. vollenweideri* (32), under the assumption of bait acceptance, which did not occur in several cases (5). Therefore, the EIL is the number of colonies for which the costs of controlling equal the benefits of control, i.e., nest densities above this EIL justify the undertaking of control measures.

2.3 Landscape level density of nests

To determine the extent to which *A. vollenweideri* surpasses the EIL level at the landscape scale, we estimated the density of nests/ha in eight circular areas of 5 km in diameter in the province of Entre Rios, Argentina (Figure 2). Inside these eight areas, each nest was georeferenced using satellite images by superimposing a grid of 1 ha (100 × 100 m) and counting the nests inside each quadrant. *A. vollenweideri* nests can be observed in satellite imagery, not only because the conspicuous dome nest can reach up to 10 m in diameter, but also because they are surrounded by a halo of bare white soil lacking any vegetation, which makes it even easier to localize (8). The areas were analyzed using ArcGIS Pro 2.9.0. Only the quadrants falling entirely inside the areas were considered, making a total of 15,624 ha, in which nest density was estimated. Aerial localization of *Atta* nests has been used previously with both aerial photography (33, 34) and satellite imagery (35); the first studies of this kind were, in fact, carried out with *A. vollenweideri* in Paraguay (7, 36).

3 Results

3.1 Plant consumption by colonies

Results show that, in an annual average, *A. vollenweideri* consumed approximately 276 kg of dry weight/ha/year. Grasses were the functional group most consumed by ants (ca. 70%). The remaining 30% was represented by herbaceous leaves and trees (25% and 5%, respectively) (Figure 3, stacked bars, overall differences among colored categories, ESM 2).

Among seasons, there were significant differences in total plant consumption by ants. Winter consumption, with approximately 30% of the annual average, was not different from summer consumption, but higher than that of spring and autumn. Summer did not differ from the other seasons (Figure 3, stacked bars, overall differences among seasons) (two-way ANOVA repeated measures with *season* as the factor after a Bonferroni *post-hoc* test, $F_{2,16} = 8.76$, $p < 0.0001$).

When considering functional groups consumed by ants, results show that season influences the plants selected by *A. vollenweideri* workers (two-way ANOVA repeated measures with *functional group* as the factor, $F_{4,31} = 11.69$, $p < 0.0001$). There were significant differences among functional groups selected by workers throughout each season (Figure 3, stacked bars, differences inside seasons). In summer and autumn, workers consumed more grasses than herbs and trees (Summer $F = 58.82$, $p < 0.0001$; Autumn $F = 49.20$, $p < 0.0001$, Bonferroni *post-hoc* test). In winter, the season of higher consumption, there were differences among the three groups ($F = 36.16$, $p < 0.0001$, Bonferroni *post-hoc* test), with grasses being the preferred type, followed by herbs and trees to a lesser extent. In spring, there were no differences in the consumption of grasses, herbs, and trees ($F = 1.86$, $p = 0.1652$).

When comparing annual and consumption with the ANPP for the region where *A. vollenweideri* is distributed (3,846 kg of dry

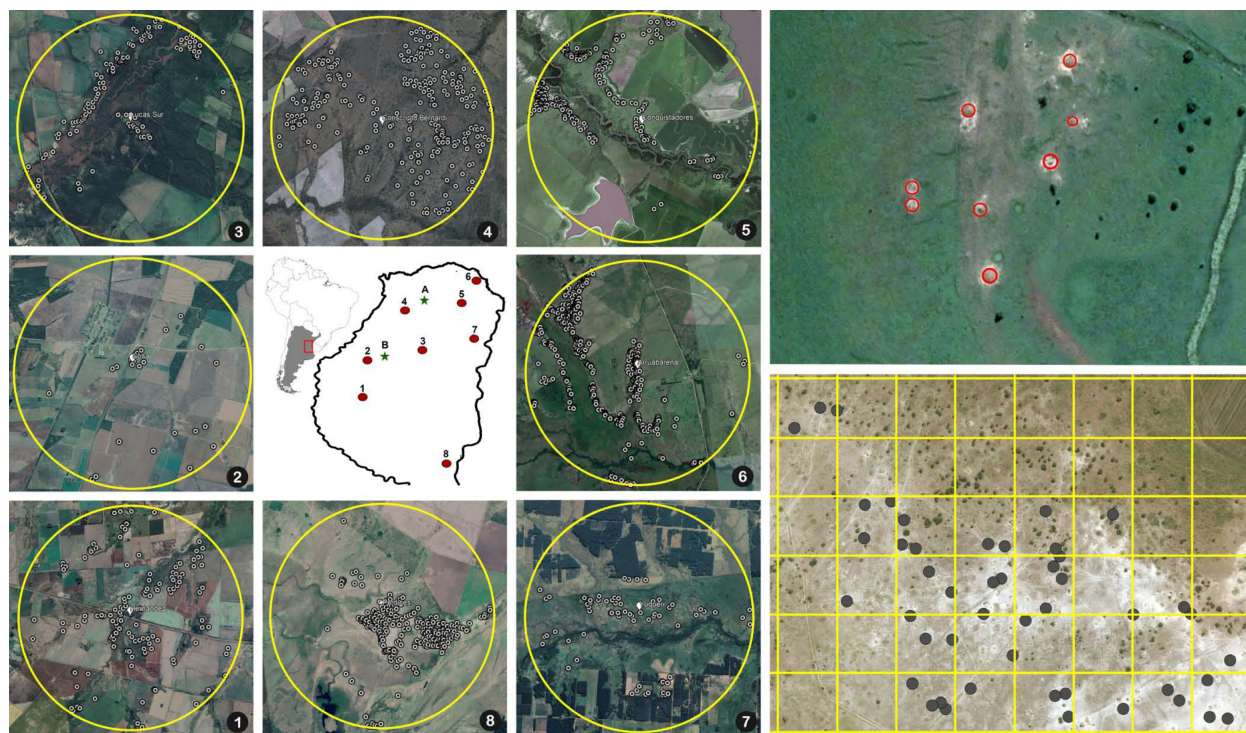


FIGURE 2

Map in the center: the numbers show the location of the eight circular areas in the province of Entre Rios, Argentina, where the nest censuses were performed. The letters show the two sites where foraging intake measurements were conducted (A, El Caraya; B, Santa Clara). Numbered pictures around the map: satellite images showing the locations of the nests in the eight areas where censuses were conducted. Upper right: detail of a field showing the position of eight nests highlighted inside red circles. Bottom right: detail of an 800 × 600 m area showing the 100 × 100 grid used for counting nest density and the marked nests inside the grid.

weight/ha/year) (37–42) (Figure 3), ant consumption accounts for 7.17% of total ANPP. Regarding a potential concurrence with cattle, the forage demand of a CUE is approximately 3,853 kg of dry weight/ha/year (Figure 3). The annual consumption by ants represents approximately 7.17% of the total CUE demand in an annual base. Although ant consumption increases during summer, overall ant consumption during spring plus summer is just 3.5% of the total cattle demand in both seasons. Even in winter, when ant demand for grasses is higher, it represents only 6% of cattle demand for that season.

3.2 EIL calculation

Cattle are never capable of consuming all the available forage. This, known as harvest efficiency, affects the K of the site for livestock production and, therefore, the economic injury level of ant colonies. When *A. vollenweideri* was absent (0 nest/ha), the K for livestock in the sites was approximately 0.45 CUE, given a harvesting efficiency of 0.454 (30), a cattle demand of 3,853 (dry weight kg/ha/year) for the CUE, and an ANPP of 3,846 (dry weight kg/ha/year). This means that the study sites can hold a CUE every 2.3 ha to achieve the goal of selling a 160-kg calf each year, without supplementary feed practices. From there, each *A. vollenweideri* nest reduces the carrying capacity of the site, as each colony consumes 185 dry weight kg/ha/year of

grasses. On average, each nest produces a loss of 3.49 kg per calf. Thus, with a nest density of 2 nests/ha, the K decreases to 0.41 and losses rise to 6.98 kg per calf; with 5 nests/ha, the K decreases to 0.34 and calf losses rise to 17.44 kg. When considering all the costs of controlling a nest of *A. vollenweideri* (43), the EIL can be established at 5.85 nests/ha, i.e., when the benefit of controlling a population of *A. vollenweideri* surpasses its cost at densities of 6 nests/ha or above (Figure 4). As a standardization to allow comparisons, bibliographic data allowed us to estimate an EIL based on the consumption reported for *Atta* species (Table 1) by assuming the same cattle demand, harvest efficiency, and costs of control as in our study, which showed that our EIL of 5.85 falls in the range of the estimations made for several *Atta* species across six countries in the Neotropical region (Figure 4).

3.3 Landscape level density of nests

Satellite imagery censuses showed that the density at which *A. vollenweideri* starts producing economic damage (above 5.85 nests/ha) is rarely reached (Figure 4). Most plots showed no presence of nests (14,635 of 15,624 plots) (ESM 2). Among the remaining 989 plots showing evidence of nests, 964 had a density below 6 nests/ha, and only 25 equaled or surpassed this critical density. This represents 2.52% of the area holding *A. vollenweideri* populations.

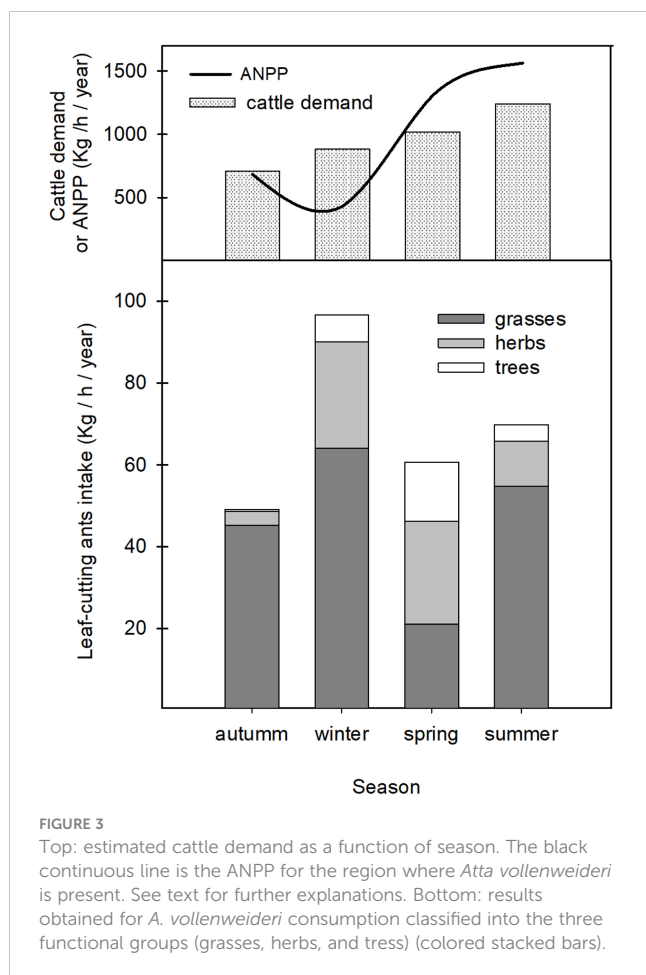


FIGURE 3

Top: estimated cattle demand as a function of season. The black continuous line is the ANPP for the region where *Atta vollenweideri* is present. See text for further explanations. Bottom: results obtained for *A. vollenweideri* consumption classified into the three functional groups (grasses, herbs, and trees) (colored stacked bars).

Moreover, the distribution of this percentage is not homogenous among sites because this EIL of 6 nests/ha was surpassed only in two of the eight surveyed sites (Figure 2, areas 5 and 6).

4 Discussion

Although grass-cutting ants have been traditionally seen as a pest of livestock production, our results show that the economic impacts of *Atta* grass-cutting ants are less important than what is commonly assumed. Although *Atta* is repeatedly cited as a grass-cutter (36, 44), our work shows that *A. vollenweideri* also cuts dicotyledonous leaves from shrubs and trees. In addition, results show that ant preferences for a specific functional group change throughout the year, with grass consumption greater in autumn but less representative in spring. These changing preferences are probably ruled by a high selectivity in response to fluctuations in palatable resources and distance to the nest, as known for other *Atta* species (45, 46). These plant preferences raise the question about competition between ants and cattle because cattle mostly consume grasses instead of shrubs and trees (28, 29). All studies to date (Table 1) have not differentiated the functional groups consumed by ants when comparing them with the actual dietary preferences of cattle (10–21, 47). Those studies generally applied the foraging

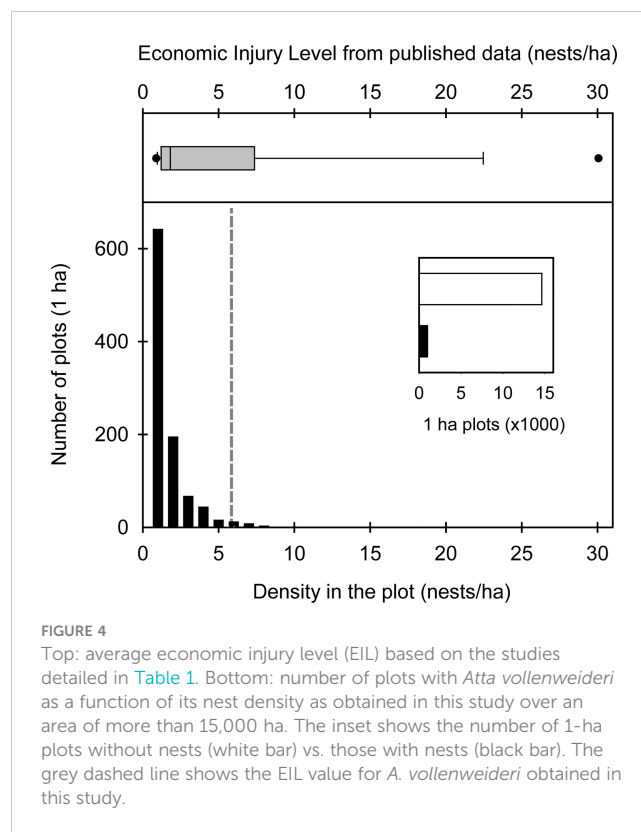


FIGURE 4

Top: average economic injury level (EIL) based on the studies detailed in Table 1. Bottom: number of plots with *Atta vollenweideri* as a function of its nest density as obtained in this study over an area of more than 15,000 ha. The inset shows the number of 1-ha plots without nests (white bar) vs. those with nests (black bar). The grey dashed line shows the EIL value for *A. vollenweideri* obtained in this study.

method (9 of 13), and loads carried by ants belonging to all functional groups were pooled. In our view, this overestimated the negative impact of ants on cattle consumption. Therefore, any calculation related to economic injury levels based on published data obtained by the foraging intake method would be biased. In our case, for instance, not classifying into functional groups as we did would result in an overestimation of the percentage of non-grass loads cut by *A. vollenweideri* by approximately 33%.

During this study, we decided to classify the loads into functional groups to focus our analysis on the fraction in which the competition was more likely to occur. By doing this, we intended to overcome the extended misleading practices of previous studies that applied the foraging method. Nevertheless, and although the exclusion method for estimating ant consumption is less used than the foraging method, we believe it also has some methodological issues worth mentioning. The main difficulty of the exclusion method is that the area around nests is not homogeneously cut. Colonies periodically change activity among trails (4, 48, 49). In fact, the extent of the current foraging area was less than 25% of the potential foraging area based on an assessment of the extension of the trails (50). Additionally, cages also excluded cow trampling (28, 51, 52) and forage by other small herbivores that consume grasses (53–55). Altogether, our study and those listed in Table 1 suffer from methodological issues that explain the great variability of values reported for *Atta* consumption and the impact they would have on livestock. However, from our point of view, our work improves on previous studies by considering functional groups using foraging methods over 24 h, increasing the number of surveyed trails, colony number, and considering the impact at a landscape level.

In addition to the method for estimating ant consumption, other factors to be taken into account are the consumption of ants and cattle in relationship with the primary productivity of the habitat and season. Farmers tend to maximize the management regime, i.e., the number of cows per hectare, for the consumption of all the ANPP under a high-pressure grazing regime (41). In this case, the probability that the consumption by any other herbivore negatively affects cattle intake is greater than when practicing a lower pressure grazing regime. However, competition occurs only if both herbivores forage on the same portion of the plants. It is known that cattle mostly cut portions of plants located above 5–10 cm (28, 56). On the contrary, there is no evidence that ants also focus on the biomass above 5–10 cm or that they cannot cut below this height. There is also no evidence to date indicating that forage consumed by ants could be taken by larger herbivores when ants are not present in that area, which seems to be an open question not only for ants but also for other small-large herbivore interactions (57). In fact, leaf-cutting ant colonies of both genera (*Atta* and *Acromyrmex*) are known to sustain stable populations in modified habitats (58–62), such as those aimed at livestock production, as commonly seen in other ant species (63). By lowering the vegetation, large herbivores promote an increase in soil temperature, which would be a limiting factor for the establishment of leaf-cutting ant colonies (62, 64), at least in southern South America (65). Intensive rangeland practices do not seem to imply the displacement of leaf-cutting ants (62, 66).

The nest density recommended to control colonies (EIL) is far beyond the density at which *Atta* colonies occur. Previous studies conducted by Jonkman (7) using aerial photography to survey the density of *A. vollenweideri* nests over an area of 80,000 km² in Paraguay showed that only 10% of the area contained living nests. This is in line with our results, which show that a small portion of the surveyed area had colonies. We recognize that calculating EIL based on consumption data from the bibliography has a strong bias. However, all species of *Atta* are expected to forage annual amounts within a similar range. First, most species possess nests of different shapes but similar sizes (67, 68), which results in similar colony sizes and consumption (69, 70). Second, fungus gardens cultivated by all species are highly conserved across species at a continental scale (3, 71) and, therefore, are expected to decay foraged material in a similar way. We believe this common EIL is an underestimation because we consider toxic baits as the standard control measure, following the established rationale for all leaf-cutting ants (72). Nevertheless, it is known that grass-cutting ants of both genera, *Atta* and *Acromyrmex*, do not always accept baits (5). Species not accepting baits should be controlled with thermal fog, which is not just more costly but also extremely harmful to the environment compared with baits (5). Although we consider this common EIL to be robust, we believe it is an underestimation. Our main goal was to obtain an index that would allow us to carry out an overall approximation for the genus, not species- or location-specific comparisons. In summary, the EIL obtained during our work falls in the range of the overall median for all studies summarized in Table 1, which is 5.42 nests/ha (Figure 4). To date, average reported nest densities for *Atta* species fall mostly below this average EIL, in both natural and modified habitats (73–75).

In recent decades, it was mostly assumed that *Atta* was a severe pest of extensive livestock production. Given our work, it could be said there is no conclusive evidence for *Atta* to be considered a severe pest. In addition, we should consider the added negative effect of controlling a species without numerical evidence supporting such a decision. Several *Atta* species have been confirmed as key engineer species (76). An irrational eradication from areas aimed at extensive livestock production would preclude extremely important ecosystem processes related to the presence of *Atta* nests (9, 77, 78). Our data, similar to the previously published works, suggest that *Atta* species, despite being conspicuous herbivores in their habitats, should not always be considered a pest of livestock production in rangelands. This differs from past and current policies concerning grass-cutting ant control in the countries where *A. vollenweideri* is widely distributed. For instance, decades ago, Argentina, Paraguay, and Uruguay promoted and made the control of *A. vollenweideri* mandatory through laws and their subsequent regulatory acts (79–81), which are still in use. Now, and based on the current evidence, new regulations are needed. These should include the concept that a species is a pest in a specific production system at a given population level, i.e., the critical economic injury level, as discussed in this study, for livestock production in rangelands. It is now time to apply the methods already developed for estimating the population density of *Atta* nests and using them as a decision criterion in rational pest management practices (1, 34, 35).

5 Conclusion

Results show that *A. vollenweideri* consumed approximately 276 kg dry weight/ha/year of plants, the most foraged being grasses (70%) but also cutting herbs (25%) and trees (5%). This consumption represents 7% of the pasture demanded to raise a calf according to the management regime applied by farmers. Our calculated EIL was 5.85 nests/ha, which falls in the range of previous works. Colonies were absent in 93.6% of a surveyed area of 15,000 ha, while their density was below the EIL in 6.2% of the area and surpassed the EIL in only 0.2%.

These results question the perception that *Atta* leaf-cutting ants are a pest of livestock production. Although ants consume a small percentage of cattle's demand, evidence that ants and cattle are competing in the few cases that density surpasses the EIL is arguable. In the countries where *A. vollenweideri* is present, decision makers have promulgated several acts making its control mandatory. It is time to revisit these regulations and the pest status of *A. vollenweideri* by including the use of EIL as a control criterion.

Data availability statement

The original contributions presented in the study are included in the article/Supplementary Material. Further inquiries can be directed to the corresponding author.

Author contributions

Conceptualization: JS and MB. Funding acquisition: JS and MB. Data acquisition: JS. Analysis: JS and MB. First draft writing: MB. Writing review and editing: MB. All authors contributed to the article and approved the submitted version.

Funding

This study was funded by UNER-PID No. 2233 (Argentina) “Ecological study of the forage rhythms of leafcutter ants in natural and anthropic environments to Mesopotamia Argentina” (to JS) and ANII – FMV 156057 (Uruguay) (to MB).

Acknowledgments

The authors thank Victor Dopazo (Estancia El Carayá), Juan Carlos Kloss (Estancia Santa Clara), Familia Mina (Estancia Los Abuelos), Sebastian Sabattini (Estancia 3 de Febrero) and the Protected Natural Area Establecimiento La Esmeralda, Juan Carlos Cian, Ivan Alberto Sabattini, Valentina Pereyra, Mauro Lindt, and Kati Pfahrer. The authors also thank Prof. Dr Patricia Folgarait and Prof. Dr Alejandro Farji-Brener for their comments that helped improve the work.

References

- Scherf AN, Corley JC, Gioia CD, Eskiviski ER, Carazzo C, Patzer HR, et al. Impact of a leaf-cutting ant (*Atta sexdens* L.) on a pinus taeda plantation: A 6 year-long study. *J Appl Entomol* (2022). doi: 10.1111/jen.13047
- Della Lucia TM, Gandra LC, Guedes RN. Managing leaf-cutting ants: peculiarities, trends and challenges. *Pest Manag Sci* (2014) 70(1):14–23. doi: 10.1002/ps.3660
- Mueller UG, Ishak HD, Bruschi SM, Smith CC, Herman JJ, Solomon SE, et al. Biogeography of mutualistic fungi cultivated by leafcutter ants. *Mol Ecol* (2017) 26(24):6921–37. doi: 10.1111/mec.14431
- Lopes JF, Brugger MS, Menezes RB, Camargo RS, Forti LC, Fourcassié V. Spatio-temporal dynamics of foraging networks in the grass-cutting ant *Atta bisphaerica* forel, 1908 (Formicidae, attini). *PLoS One* (2016) 11(1):e0146613. doi: 10.1371/journal.pone.0146613
- Bollazzi M, Forti LC, Moreira S, Roces F. Efficiency and soil contamination during underground application of insecticides: control of leaf-cutting ants with thermal foggers. *J Pest Sci* (2014) 87(1):181–9. doi: 10.1007/s10340-013-0525-7
- Greenwood PL. Review: An overview of beef production from pasture and feedlot globally, as demand for beef and the need for sustainable practices increase. *Animal* (2021) 15:100295. doi: 10.1016/j.animal.2021.100295
- Jonkman JCM. Distribution and densities of nests of the leaf-cutting ant *Atta vollenweideri* forel, 1893 in Paraguay. *Z Angew Entomol* (1979) 88:27–43. doi: 10.1111/j.1439-0418.1979.tb02474.x
- Sabattini JA, Sabattini RA, Cian JC, Sabattini IA. Vegetation changes in a native forest produced by *Atta vollenweideri* forel 1893 (Hymenoptera: Formicidae) nests. *Neotrop Entomol* (2018) 47(1):53–61. doi: 10.1007/s13744-017-0513-3
- Sosa B, Brazeiro A. Positive ecosystem engineering effects of the ant *Atta vollenweideri* on the shrub *Grabowskia duplicata*. *J Veg Sci* (2010) 21(3):597–605. doi: 10.1111/j.1654-1103.2010.01170.x
- Amante E. *Influência de alguns fatores microclimáticos sobre a formiga saúva, Atta laevigata* (Fr. Smith, 1858), *Atta sexdens rubropilosa* forel, 1908, e *Atta capiguara* gonçalves, 1944 (Hymenoptera: Formicidae). Universidade de São Paulo: Piracicaba (1972). p. 175.
- Forti LC. *Ecologia da atividade forrageira da saúva, Atta capiguara gonçalves, 1944* (Hymenoptera: Formicidae), e seu impacto em pastagem. Piracicaba, Brazil: Escola Superior de Agricultura Luiz de Queiroz-USP (1985).
- Jonkman JCM. Average vegetative requirement, colony size and estimated impact of *Atta vollenweideri* on cattle-raising in Paraguay. *Z Angew Entomol* (1980) 89(1-5):135–43. doi: 10.1111/j.1439-0418.1980.tb03452.x
- Robinson SW, Fowler HG. Foraging and pest potential of Paraguayan grass-cutting ants (*Atta* and *Acromyrmex*) to the cattle industry. *Z Angew Entomol* (1982) 93(1):42–54. doi: 10.1111/j.1439-0418.1982.tb03569.x
- Guillade AC, Folgarait PJ. Competition between grass-cutting *Atta vollenweideri* ants (Hymenoptera: Formicidae) and domestic cattle (Artiodactyla: Bovidae) in Argentine rangelands. *Agric For Entomol* (2015) 17(2):113–9. doi: 10.1111/afe.12085
- Blanton CM, Ewel JJ. Leaf-cutting ant herbivory in successional and agricultural tropical ecosystems. *Ecology* (1985) 66(3):861–9. doi: 10.2307/1940548
- Lugo AE, Farnworth EG, Pool D, Jerez P. The impact of the leaf cutter ant *Atta colombica* on the energy flow of a tropical wet forest. *Ecology* (1973) 54(6):1292–301. doi: 10.2307/1934191
- Herz H, Beyschlag W, Holldobler B. Assessing herbivory rates of leaf-cutting ant (*Atta colombica*) colonies through short-term refuse deposition counts. *Biotropica* (2007) 39(4):476–81. doi: 10.1111/j.1744-7429.2007.00283.x
- Haines BL. Element and energy flows through colonies of the leaf-cutting ant, *Atta colombica*, in Panama. *Biotropica* (1978) 10(4):270–7. doi: 10.2307/2387679
- Wirth R, Beyschlag W, Ryel RJ, Holldobler B. Annual foraging of the leaf-cutting ant *Atta colombica* in a semideciduous rain forest in Panama. *J Trop Ecol* (1997) 13(5):741–57. doi: 10.1017/s0266467400010907
- Siqueira FFS, Ribeiro-Neto JD, Tabarelli M, Andersen AN, Wirth R, Leal IR. Human disturbance promotes herbivory by leaf-cutting ants in the caatinga dry forest. *Biotropica* (2018) 50(5):779–88. doi: 10.1111/btp.12599
- Costa AN, Vasconcelos HL, Vieira-Neto EHM, Bruna EM. Do herbivores exert top-down effects in Neotropical savannas? estimates of biomass consumption by leaf-cutter ants. *J Veg Sci* (2008) 19(6):849–54. doi: 10.3170/2008-8-18461
- Fowler HG, Forti LC, Di Romagnano LFT. Methods for the evaluation of leaf-cutting ant harvest. In: *Applied myrmecology*, vol. . p. Boca Raton, FL, USA: CRC Press (1990). p. 228–41.
- van Gils HAJA, Gómez LE, Gaigl A. *Atta sexdens* (L.) (Hymenoptera: Formicidae) demography in the Colombian Amazon: An evaluation of the palatable forage hypothesis. *Environ Entomol* (2011) 40(4):770–6. doi: 10.1603/en10209

Conflict of interest

The authors declare that the research was conducted in the absence of any commercial or financial relationships that could be construed as a potential conflict of interest.

Publisher's note

All claims expressed in this article are solely those of the authors and do not necessarily represent those of their affiliated organizations, or those of the publisher, the editors and the reviewers. Any product that may be evaluated in this article, or claim that may be made by its manufacturer, is not guaranteed or endorsed by the publisher.

Supplementary material

The Supplementary Material for this article can be found online at: <https://www.frontiersin.org/articles/10.3389/finsc.2023.1101445/full#supplementary-material>

ESM 1

Video showing the foraging activity in a trail of an *Atta vollenweideri* nest. The different functional groups consumed can be observed while being carried by workers into the nest.

24. Van Gils HAJA, Vanderwoude C. Leafcutter ant (*Atta sexdens*) (Hymenoptera: Formicidae) nest distribution responds to canopy removal and changes in microclimate in the southern Colombian Amazon. *Fla Entomol* (2012) 95(4):914–21. doi: 10.1653/024.095.0414
25. Farji-Brener AG, Protomastro J. Patrones forrajeros de dos especies simpátricas de hormigas cortadoras de hojas (*Attini*, *Acromyrmex*) en un bosque subtropical seco. *Ecotropicos* (1992) 5(1):32–43.
26. Cherrett JM. Some factors involved in the selection of vegetable substrate by *Atta cephalotes* (L.) (Hymenoptera: Formicidae) in tropical rain forest. *J Anim Ecol* (1972) 41:647–60. doi: 10.2307/3200
27. Rockwood LL. Plant selection and foraging patterns in two species of leaf-cutting ants (*Atta*). *Ecology* (1976) 57:48–61. doi: 10.2307/1936397
28. Heady H. *Rangeland ecology and management*. Andover, England, UK: Taylor & Francis (2019).
29. Holeczek J, Pieper R, Herbel C. *Range management: Principles and practices*. London, England, UK: Pearson (2010).
30. Oosterheld M, Sala O, McNaughton S. Effect of animal husbandry on herbivore-carrying capacity at a regional scale. *Nature* (1992) 356(6366):234–6. doi: 10.1038/356234a0
31. Agroganadero M. (2022). Available at: <http://www.mercadodelinierni.com.ar/dll/hacienda1.dll/haciinfo000002>.
32. Guillade AC, Folgarait PJ. Natural enemies of *Atta vollenweideri* (Hymenoptera: Formicidae) leaf-cutter ants negatively affected by synthetic pesticides, chlorpyrifos and fipronil. *J Econ Entomol* (2014) 107(1):105–14. doi: 10.1603/ec12498
33. Moser JC. Estimating timber losses from a town ant colony with aerial photographs. *South J Appl For* (1986) 10(1):45–9. doi: 10.1093/sjaf/10.1.45
34. dos Santos A, Biessack BJG, Latte N, de Lima Santos IC, dos Santos WP, Zanetti R, et al. Remote detection and measurement of leaf-cutting ant nests using deep learning and an unmanned aerial vehicle. *Comput Electron Agric* (2022) 198:107071. doi: 10.1016/j.compag.2022.107071
35. Santos I, Santos A, Oumar Z, Soares M, Silva J, Zanetti R, et al. Remote sensing to detect nests of the leaf-cutting ant *Atta sexdens* (Hymenoptera: Formicidae) in teak plantations. *Remote Sens* (2019) 11(14):1641. doi: 10.3390/rs11141641
36. Jonkman JCM. Biology and ecology of the leaf cutting ant *Atta vollenweideri* forel, 1893. *Z Angew Entomol* (1976) 81(1-4):140–8. doi: 10.1111/j.1439-0418.1976.tb04221.x
37. Sabattini JA, Sabattini RA, Omar AFU, Bacigalupo M, Cian JC, Sabattini IA, et al. Recuperación del pastizal natural en un bosque nativo degradado del espinal argentino mediante el control químico aéreo de arbustivas. *Investigación Agraria* (2019) 21(2):93–107. doi: 10.18004/investig.agrar.2019.diciembre.93-107
38. Altesor A, Oosterheld M, Leoni E, Lezama F, Rodríguez C. Effect of grazing on community structure and productivity of a Uruguayan grassland. *Plant Ecol* (2005) 179(1):83–91. doi: 10.1007/s11258-004-5800-5
39. Guido A, Varela RD, Baldassini P, Paruelo J. Spatial and temporal variability in aboveground net primary production of Uruguayan grasslands. *Rangeland Ecol Manage* (2014) 67(1):30–8. doi: 10.2111/rem-d-12-00125.1
40. Vassallo MM, Dieguez HD, Garbulsky MF, Jobbágy EG, Paruelo JM. Grassland afforestation impact on primary productivity: a remote sensing approach. *Appl Veg Sci* (2013) 16(3):390–403. doi: 10.1111/avsc.12016
41. Dieguez FJ, Pereira M. Uruguayan Native grasslands net aerial primary production model and its application on safe stocking rate concept. *Ecol Model* (2020) 430:109060. doi: 10.1016/j.ecolmodel.2020.109060
42. Gallego F, Lezama F, Pezzani F, López-Mársico L, Leoni E, Mello AL, et al. Estimación de la productividad primaria neta aérea y capacidad de carga ganadera: un estudio de caso en sierras del este, Uruguay. *Agrociencia (Uruguay)* (2017) 21(1):120–30. doi: 10.31285/AGRO.21.1.14
43. Peterson RKD, Hunt TE. The probabilistic economic injury level: incorporating uncertainty into pest management decision-making. *J Econ Entomol* (2003) 96(3):536–42. doi: 10.1603/0022-0493-96.3.536
44. Röschard J, Roces F. The effect of load length, width and mass on transport rate in the grass-cutting ant *Atta vollenweideri*. *Oecologia* (2002) 131:319–24. doi: 10.1007/s00442-002-0882-z
45. Weerathunga M, Mikheyev AS. Integrating host plant phylogeny, plant traits, intraspecific competition and repeated measures using a phylogenetic mixed model of field behaviour by polyphagous herbivores, the leaf-cutting ants. *J Trop Ecol* (2020) 36(2):80–6. doi: 10.1017/s0266467420000012
46. Costa AN, Vasconcelos HL, Vieira-Neto EHM, Bruna EM. Adaptive foraging of leaf-cutter ants to spatiotemporal changes in resource availability in neotropical savannas. *Ecol Entomol* (2019) 44(2):227–38. doi: 10.1111/een.12697
47. Herz H, Beyschlag W, Holldobler B. Herbivory rate of leaf-cutting ants in a tropical moist forest in Panama at the population and ecosystem scales. *Biotropica* (2007) 39(4):482–8. doi: 10.1111/j.1744-7429.2007.00284.x
48. Silva P, Bieber A, Knoch T, Tabarelli M, Leal I, Wirth R. Foraging in highly dynamic environments: leaf-cutting ants adjust foraging trail networks to pioneer plant availability. *Entomol Exp Appl* (2012) 147:110–9. doi: 10.1111/eea.12050
49. Kost C, de Oliveira EG, Knoch TA, Wirth R. Spatio-temporal permanence and plasticity of foraging trails in young and mature leaf-cutting ant colonies (*Atta* spp.). *J Trop Ecol* (2005) 21(6):677–88. doi: 10.1017/s0266467405002592
50. Vasconcelos H. Foraging activity of two species of leaf-cutting ants (*Atta*) in a primary forest of the central Amazon. *Insectes Soc* (1990) 37:131–45. doi: 10.1007/bf02224026
51. Dunne T, Western D, Dietrich WE. Effects of cattle trampling on vegetation, infiltration, and erosion in a tropical rangeland. *J Arid Environ* (2011) 75(1):58–69. doi: 10.1016/j.jaridenv.2010.09.001
52. Quinn JA, Hervey DF. Trampling losses and travel by cattle on sandhills range. *Rangel Ecol Manag* (1970) 23(1):50–5. doi: 10.2307/3896008
53. Bailey P, Frensham AB, Hincks A, Newton M. Competition for herbage by *Phaulacridium vittatum* (Sjostedt) (Orthoptera:Acrididae) and sheep during summer drought. *J Austral ent Soc* (1994) 33:175–9. doi: 10.1111/j.1440-6055.1994.tb00947.x
54. Le Gall M, Overson R, Cease A. A global review on locusts (Orthoptera: Acrididae) and their interactions with livestock grazing practices. *Front Ecol Evol* (2019) 0:263. doi: 10.3389/fevo.2019.00263
55. Cigliano MM, Torrusiono S, De Wysiecki ML. Grasshopper (Orthoptera: Acrididae) community composition and temporal variation in the pampas, Argentina. *J Orthoptera Res* (2002) 11(2):215–21. doi: 10.1665/1082-6467(2002)011[0215:GOACCA]2.0.CO;2
56. Arnold GW. Grazing behavior. In: Morley FHW, editor. *Grazing animals, world animal sciences* BI. Elsevier:Amsterdam (1981). p. 412.
57. Foster CN, Barton PS, Lindenmayer DB. Effects of large native herbivores on other animals. *J Appl Ecol* (2014) 51(4):929–38. doi: 10.1111/1365-2664.12268
58. Fowler HG. Distribution patterns of Paraguayan leaf-cutting ants (*Atta* and *Acromyrmex*) (Formicidae: Attini). *Stud Neotrop Fauna Environ* (1983) 18:121–38. doi: 10.1080/01650528309360626
59. Vasconcelos HL, Cherrett JM. Changes in leaf-cutting ant populations (Formicidae: Attini) after the clearing of mature forest in Brazilian Amazonia. *Stud Neotrop Fauna Environ* (1995) 30(2):107–13. doi: 10.1080/01650529509360947
60. Vasconcelos HL, Vieira-Neto EHM, Mundim FM, Bruna EM. Roads alter the colonization dynamics of a keystone herbivore in neotropical savannas. *Biotropica* (2006) 38(5):661–5. doi: 10.1111/j.1744-7429.2006.00180.x
61. Siqueira FFS, Ribeiro-Neto JD, Tabarelli M, Andersen AN, Wirth R, Leal IR. Leaf-cutting ant populations profit from human disturbances in tropical dry forest in Brazil. *J Trop Ecol* (2017) 33(5):337–44. doi: 10.1017/s0266467417000311
62. Bollazzi M, Kronenbitter J, Roces F. Soil temperature, digging behaviour, and the adaptive value of nest depth in south American species of *Acromyrmex* leaf-cutting ants. *Oecologia* (2008) 158(1):165–75. doi: 10.1007/s00442-008-1113-z
63. Li X, Zhong Z, Sanders D, Smit C, Wang D, Nummi P, et al. Reciprocal facilitation between large herbivores and ants in a semi-arid grassland. *Proc R Soc B* (2018) 285(1888):20181665. doi: 10.1098/rspb.2018.1665
64. Bollazzi M, Roces F. The thermoregulatory function of thatched nests in the south American grass-cutting ant, *Acromyrmex heyeri*. *J Insect Sci* (2010) 10. doi: 10.1673/031.010.13701
65. Sousa KKA, Camargo RS, Caldato N, Farias AP, Calca MVC, Dal Pai A, et al. The ideal habitat for leaf-cutting ant queens to build their nests. *Sci Rep* (2022) 12(4830):1–9. doi: 10.1038/s41598-022-08918-2
66. Barrera CA, Buffa LM, Valladares G. Do leaf-cutting ants benefit from forest fragmentation? insights from community and species-specific responses in a fragmented dry forest. *Insect Conserv Divers* (2015) 8(5):456–63. doi: 10.1111/icad.12125
67. Bollazzi M, Forti LC, Roces F. Ventilation of the giant nests of *Atta* leaf-cutting ants: does underground circulating air enter the fungus chambers? *Insectes Soc* (2012) 59(4):487–98. doi: 10.1007/s00040-012-0243-9
68. Bollazzi M, Römer D, Roces F. Carbon dioxide levels and ventilation in leaf-cutting ant nests: Significance and evolution of architectural innovations in leaf-cutting ants. *R Soc Open Sci* (2021) 8(11). doi: 10.1098/rsos.210907
69. Moreira AA, Forti LC, Boaretto MAC, Andrade APP, Lopes JFS, Ramos VM. External and internal structure of *Atta bisphaerica* forel (Hymenoptera: Formicidae) nests. *J Appl Ent* (2004) 128:204–11. doi: 10.1111/j.1439-0418.2004.00839.x
70. Moreira AA, Forti LC, de Andrade APP, Castellani Boaretto MA. Architecture of nests of the *Atta laevigata* (F. smith, 1858) (Hymenoptera: Formicidae). *Stud Neotrop Fauna Environ* (2004) 39(2):109–16. doi: 10.1080/01650520412331333756
71. Smith CC, Weber JN, Mikheyev AS, Roces F, Bollazzi M, Kellner K, et al. Landscape genomics of an obligate mutualism: Concordant and discordant population structures between the leafcutter ant *Atta texana* and its two main fungal symbiont types. *Mol Ecol* (2019) 28(11):2831–45. doi: 10.1111/mec.15111
72. De Britto JS, Forti LC, de Oliveira MA, Zanetti R, Wilcken CF, Zanoncio JC, et al. Use of alternatives to PFOS, its salts and PFOSF for the control of leaf-cutting ants *Atta* and *Acromyrmex*. *Int J Environ Stud* (2016) 3:11–92.
73. Sendoya S, Silva P, Farji-Brener A. Does inundation risk affect leaf-cutting ant distribution? a study along a topographic gradient of a Costa Rican tropical wet forest. *J Trop Ecol* (2014) 30:89–92. doi: 10.1017/s026646741300076x
74. Wirth R, Meyer ST, Almeida WR, Araújo J, Vieira M, Barbosa VS, et al. Increasing densities of leaf-cutting ants (*Atta* spp.) with proximity to the edge in a Brazilian Atlantic forest. *J Trop Ecol* (2007) 23(4):501–5. doi: 10.1017/S0266467407004221

75. Dohm C, Leal RI, Tabarelli M, Meyer S, Wirth R. Leaf-cutting ants proliferate in the Amazon: an expected response to forest edge? *J Trop Ecol* (2011) 27:645–9. doi: 10.1017/s0266467411000447
76. Wirth R, Herz H, Ryel RJ, Beyschlag W, Hölldobler B. *Herbivory of leaf-cutting ants - a case study on atta colombica in the tropical rainforest of Panama*. Berlin: Springer (2002). p. 230.
77. Costa AN, Bruna EM, Vasconcelos HL. Do an ecosystem engineer and environmental gradient act independently or in concert to shape juvenile plant communities? tests with the leaf-cutter ant *Atta laevigata* in a Neotropical savanna. *PeerJ* (2018) 6:e5612. doi: 10.7717/peerj.5612
78. Fernandez-Bou AS, Dierick D, Swanson AC, Allen MF, Alvarado AGF, Artavia-León A, et al. The role of the ecosystem engineer, the leaf-cutter ant *Atta cephalotes*, on soil CO₂ dynamics in a wet tropical rainforest. *J Geophys Res Biogeosci* (2019) 124(2):260–73. doi: 10.1029/2018jg004723
79. *Disposicion-116-1964 del decreto ley n° 6704/63*. MINISTERIO DE AGRICULTURA, GANADERÍA, PESCA Y ALIMENTOS:Argentina (1964). Available at: <http://www.senasa.gob.ar/normativas/disposicion-116-1964-ministerio-de-agricultura-ganaderia-pesca-y-alimentos>.
80. *Ley n° 8051 / ley organica de defensa agricola*. Ministerio de Agricultura: Paraguay. (1941). Available at: <https://www.bacn.gov.py/leyes-paraguayas/276/ley-n-8051-por-el-cual-se-dicta-una-nueva-ley-organica-de-defensa-agricola>.
81. *Atrticulo 22, codigo rural, ley n° 10.024*. Ministerio de Agricultura, Uruguay. (1941). Available at: <https://www.impo.com.uy/bases/textos-originales-ley/10024-1941/22>.