



OPEN ACCESS

EDITED AND REVIEWED BY
Zhenghua Zhang,
Fudan University, China

*CORRESPONDENCE

Xiaofan Chen

✉ littlecanva@163.com

Bo Yu

✉ yubomd@hotmail.com

RECEIVED 05 February 2024

ACCEPTED 20 February 2024

PUBLISHED 29 February 2024

CITATION

Tang S, Hu H, Li M, Zhang K, Wu Q, Liu X, Wu L, Yu B and Chen X (2024) Corrigendum: OPN promotes pro-inflammatory cytokine expression via ERK/JNK pathway and M1 macrophage polarization in Rosacea. *Front. Immunol.* 15:1382092. doi: 10.3389/fimmu.2024.1382092

COPYRIGHT

© 2024 Tang, Hu, Li, Zhang, Wu, Liu, Wu, Yu and Chen. This is an open-access article distributed under the terms of the [Creative Commons Attribution License \(CC BY\)](#). The use, distribution or reproduction in other forums is permitted, provided the original author(s) and the copyright owner(s) are credited and that the original publication in this journal is cited, in accordance with accepted academic practice. No use, distribution or reproduction is permitted which does not comply with these terms.

Corrigendum: OPN promotes pro-inflammatory cytokine expression via ERK/JNK pathway and M1 macrophage polarization in Rosacea

Siyi Tang¹, Hao Hu¹, Manhui Li¹, Kaoyuan Zhang², Qi Wu³, Xiaojuan Liu¹, Lin Wu², Bo Yu^{2*} and Xiaofan Chen^{1*}

¹Shenzhen Key Laboratory for Translational Medicine of Dermatology, Biomedical Research Institute, Shenzhen Peking University - The Hong Kong University of Science and Technology Medical Center, Shenzhen, Guangdong, China, ²Department of Dermatology, Peking University Shenzhen Hospital, Shenzhen, China, ³Greater Bay Biomedical Innocenter, Shenzhen Bay Laboratory, Shenzhen, China

KEYWORDS

Rosacea, OPN, keratinocyte, macrophage, inflammation

A Corrigendum on

OPN promotes pro-inflammatory cytokine expression via ERK/JNK pathway and M1 macrophage polarization in Rosacea

By Tang S, Hu H, Li M, Zhang K, Wu Q, Liu X, Wu L, Yu B and Chen X (2024) *Front. Immunol.* 14:1285951. doi: 10.3389/fimmu.2023.1285951

In the published article, there was an error in [Figure 2A](#) as published. The magnified image for the WT-PBS group was misused in the OPN KO-PBS group in the lower panel of [Figure 2A](#). The corrected [Figure 2](#) and its caption appear below.

The authors apologize for this error and state that this does not change the scientific conclusions of the article in any way. The original article has been updated.

Publisher's note

All claims expressed in this article are solely those of the authors and do not necessarily represent those of their affiliated organizations, or those of the publisher, the editors and the reviewers. Any product that may be evaluated in this article, or claim that may be made by its manufacturer, is not guaranteed or endorsed by the publisher.

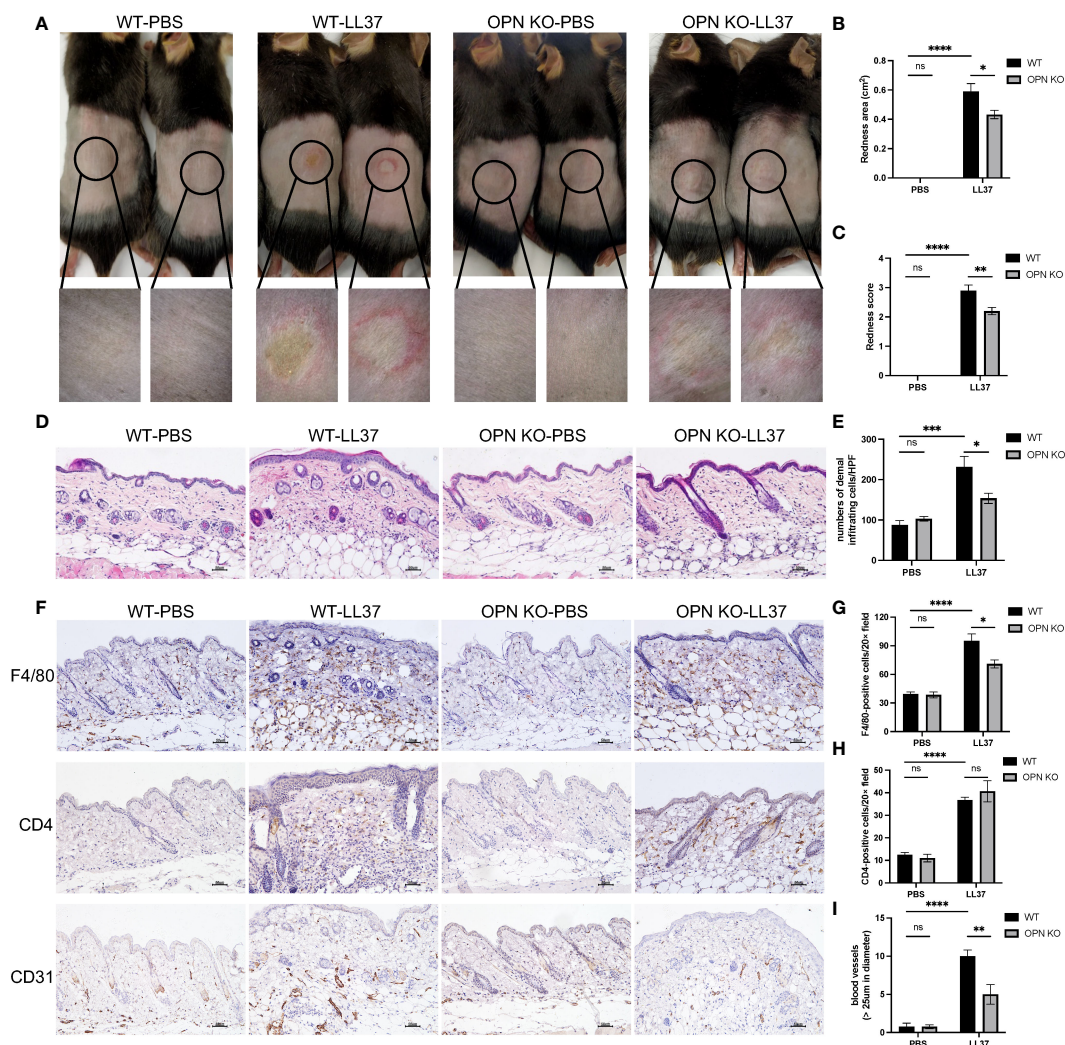


FIGURE 2

OPN knockdown attenuated rosacea-like skin redness and inflammatory cell infiltration in mice. (A) LL37 was injected intradermally into the dorsal skin of WT mice and OPN KO mice to induce a rosacea-like phenotype. The skin lesions were collected two days after injection with PBS or LL37. The lower panel is a magnified image of the circular area in the upper panel. The severity of the rosacea-like phenotypes was assessed according to the redness area (B) and redness score (C). Data represent the mean \pm SEM. * $p < 0.05$, ** $p < 0.01$, **** $p < 0.0001$. Ns, no significance. (D) HE staining for the histological analysis of WT mice and OPN KO mice injected with PBS or LL37. Scale bar: 50 μ m. (E) The number of dermal inflammatory infiltration in each group was quantified ($n = 4$ for each group). Data represent the mean \pm SEM. Two-way ANOVA with Tukey's *post hoc* test was used for statistical analyses. * $p < 0.05$, *** $p < 0.001$. Ns, no significance. (F) Representative images of immunohistochemistry of F4/80, CD4, and CD31 in WT mice and OPN KO mice injected with PBS or LL37. Scale bar: 50 μ m. (G) The infiltration of F4/80-positive cells was quantified in each group ($n = 4$ for each group). Data represent the mean \pm SEM. Two-way ANOVA with Tukey's *post hoc* test was used for statistical analyses. * $p < 0.05$, **** $p < 0.0001$. Ns, no significance. (H) The infiltration of CD4-positive cells was quantified in each group ($n = 4$ for each group). Data represent the mean \pm SEM. Two-way ANOVA with Tukey's *post hoc* test was used for statistical analyses. **** $p < 0.0001$. Ns, no significance. (I) The number of CD31-positive blood vessels (>25 μ m in diameter) was quantified in each group ($n = 4$ for each group). Data represent the mean \pm SEM. Two-way ANOVA with Tukey's *post hoc* test was used for statistical analyses. ** $p < 0.01$, **** $p < 0.0001$. Ns, no significance.