



OPEN ACCESS

APPROVED BY
Frontiers Editorial Office,
Frontiers Media SA, Switzerland

*CORRESPONDENCE
Satoshi Wada
✉ st-wada@med.showa-u.ac.jp

RECEIVED 27 November 2023
ACCEPTED 29 November 2023
PUBLISHED 05 December 2023

CITATION

Shimizu T, Inoue E, Ohkuma R,
Kobayashi S, Tsunoda T and Wada S (2023)
Corrigendum: Soluble PD–L1 changes in
advanced non-small cell lung cancer
patients treated with PD-1 inhibitors: an
individual patient data meta-analysis.
Front. Immunol. 14:1345513.
doi: 10.3389/fimmu.2023.1345513

COPYRIGHT

© 2023 Shimizu, Inoue, Ohkuma, Kobayashi,
Tsunoda and Wada. This is an open-access
article distributed under the terms of the
[Creative Commons Attribution License
\(CC BY\)](https://creativecommons.org/licenses/by/4.0/). The use, distribution or
reproduction in other forums is permitted,
provided the original author(s) and the
copyright owner(s) are credited and that
the original publication in this journal is
cited, in accordance with accepted
academic practice. No use, distribution or
reproduction is permitted which does not
comply with these terms.

Corrigendum: Soluble PD–L1 changes in advanced non-small cell lung cancer patients treated with PD-1 inhibitors: an individual patient data meta-analysis

Takashi Shimizu^{1,2}, Eisuke Inoue³, Ryotaro Ohkuma^{1,4},
Shinichi Kobayashi², Takuya Tsunoda⁴ and Satoshi Wada^{1,2,4,5,6*}

¹Department of Clinical Diagnostic Oncology, Clinical Research Institute for Clinical Pharmacology and Therapeutics, Showa University, Tokyo, Japan, ²Clinical Research Institute for Clinical Pharmacology and Therapeutics, Showa University, Tokyo, Japan, ³Showa University Research Administration Center, Showa University, Tokyo, Japan, ⁴Division of Medical Oncology, Department of Medicine, School of Medicine, Showa University, Tokyo, Japan, ⁵Department of Pharmacology, School of Medicine, Showa University, Tokyo, Japan, ⁶Pharmacological Research Center, Showa University, Tokyo, Japan

KEYWORDS

soluble PD-L1, advanced non-small cell lung cancer, PD-1 inhibitors, individual patient data meta-analysis, biomarker

A Corrigendum on

Soluble PD-L1 changes in advanced non-small cell lung cancer patients treated with PD-1 inhibitors: an individual patient data meta-analysis

by Shimizu T, Inoue E, Ohkuma R, Kobayashi S, Tsunoda T and Wada S (2023) *Front. Immunol.* 14:1308381. doi: 10.3389/fimmu.2023.1308381

In the published article, there was an error in the legend for **Figure 2** and **Figure 3** as published. **Figure 2B** and **Figure 3B**; Hazard ratios of **overall death**, and **Figure 3** legend; **B**; **disease** progression. The corrected legend appears below.

Figure 2B and **Figure 3B**; Hazard ratios of **disease progression**, and **Figure 3** legend; **B**; **disease** progression.

The authors apologize for these errors and state that this does not change the scientific conclusions of the article in any way. The original article has been updated.

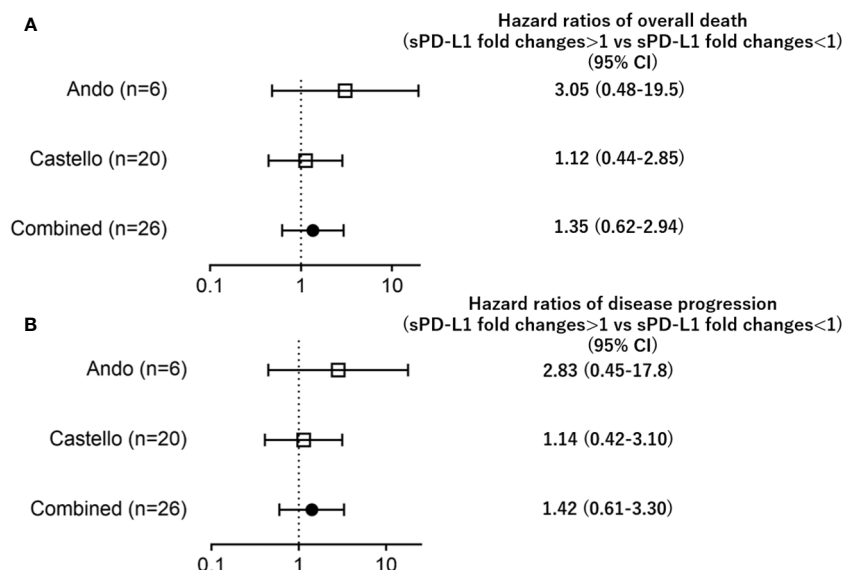


FIGURE 2 Forest plots representing hazard ratios of death (A: overall death, B: disease progression) for sPD-L1 fold changes in each trial.

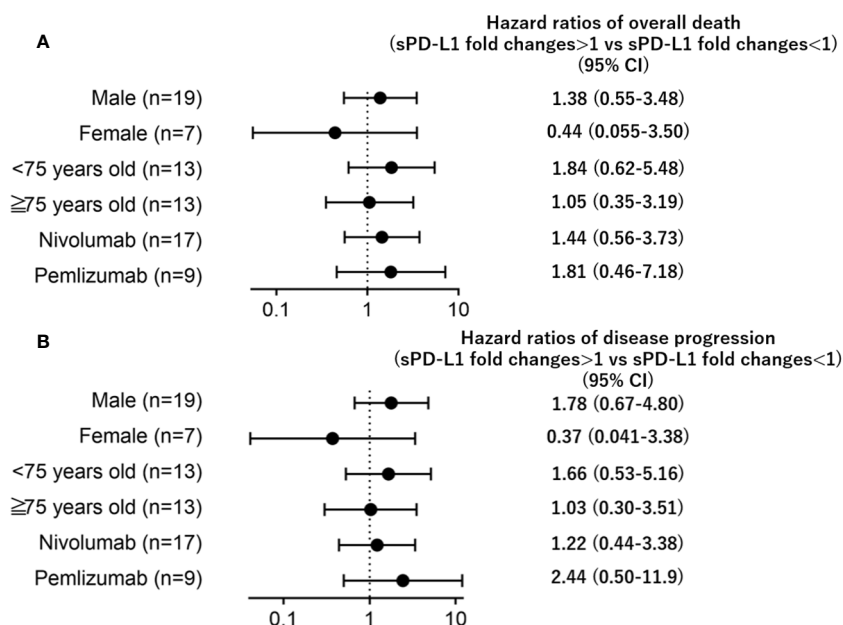


FIGURE 3 Forest plots representing hazard ratios of death (A: overall death, B: disease progression) for sPD-L1 changes by subgroup.

Publisher's note

All claims expressed in this article are solely those of the authors and do not necessarily represent those of their affiliated

organizations, or those of the publisher, the editors and the reviewers. Any product that may be evaluated in this article, or claim that may be made by its manufacturer, is not guaranteed or endorsed by the publisher.