



## OPEN ACCESS

EDITED AND REVIEWED BY  
Ulises Gomez-Pinedo,  
Health Research Institute of Hospital  
Clínico San Carlos, Spain

## \*CORRESPONDENCE

Lavanya Visvabharathy  
✉ lavanya.visvabharathy@northwestern.edu  
Igor J. Koralnik  
✉ igor.koralnik@northwestern.edu

RECEIVED 10 August 2023  
ACCEPTED 14 August 2023  
PUBLISHED 24 August 2023

## CITATION

Visvabharathy L, Hanson BA, Orban ZS, Lim PH, Palacio NM, Jimenez M, Clark JR, Graham EL, Liotta EM, Tachas G, Penaloza-MacMaster P and Koralnik IJ (2023) Corrigendum: Neuro-PASC is characterized by enhanced CD4+ and diminished CD8+ T cell responses to SARSCoV-2 Nucleocapsid protein. *Front. Immunol.* 14:1275925. doi: 10.3389/fimmu.2023.1275925

## COPYRIGHT

© 2023 Visvabharathy, Hanson, Orban, Lim, Palacio, Jimenez, Clark, Graham, Liotta, Tachas, Penaloza-MacMaster and Koralnik. This is an open-access article distributed under the terms of the [Creative Commons Attribution License \(CC BY\)](https://creativecommons.org/licenses/by/4.0/). The use, distribution or reproduction in other forums is permitted, provided the original author(s) and the copyright owner(s) are credited and that the original publication in this journal is cited, in accordance with accepted academic practice. No use, distribution or reproduction is permitted which does not comply with these terms.

# Corrigendum: Neuro-PASC is characterized by enhanced CD4+ and diminished CD8+ T cell responses to SARSCoV-2 Nucleocapsid protein

Lavanya Visvabharathy<sup>1\*</sup>, Barbara A. Hanson<sup>1</sup>, Zachary S. Orban<sup>1</sup>, Patrick H. Lim<sup>1</sup>, Nicole M. Palacio<sup>2</sup>, Millenia Jimenez<sup>1</sup>, Jeffrey R. Clark<sup>1</sup>, Edith L. Graham<sup>1</sup>, Eric M. Liotta<sup>1</sup>, George Tachas<sup>3</sup>, Pablo Penaloza-MacMaster<sup>2</sup> and Igor J. Koralnik<sup>1\*</sup>

<sup>1</sup>Ken and Ruth Davee Department of Neurology, Feinberg School of Medicine, Northwestern University, Chicago, IL, United States, <sup>2</sup>Department of Microbiology-Immunology, Feinberg School of Medicine, Northwestern University, Chicago, IL, United States, <sup>3</sup>Drug Discovery & Patents, Antisense Therapeutics Ltd., Melbourne, VIC, Australia

## KEYWORDS

COVID-19 immunity, T cell memory, neuro-PASC, IL-6, immunoregulation, proteomics, long COVID

## A corrigendum on

## Neuro-PASC is characterized by enhanced CD4+ and diminished CD8+ T cell responses to SARS-CoV-2 Nucleocapsid protein

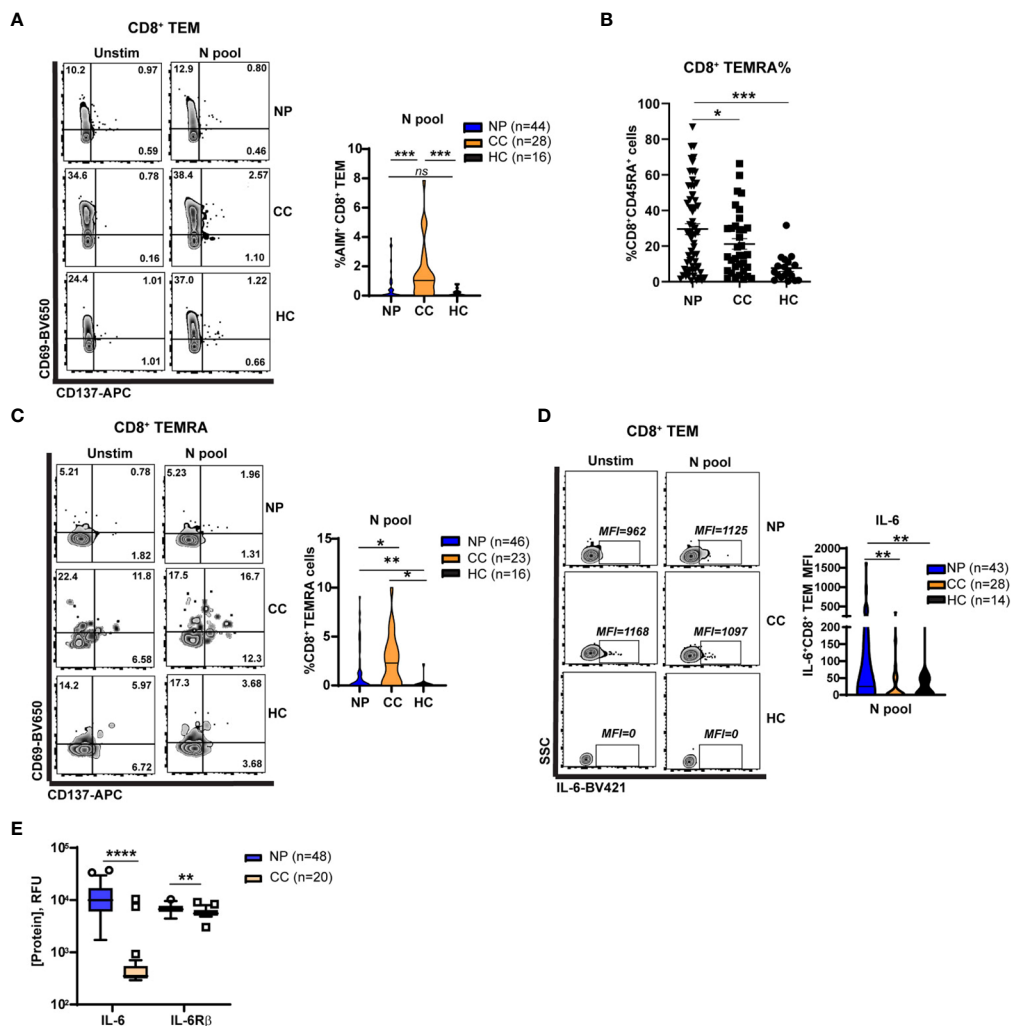
by Visvabharathy L, Hanson BA, Orban ZS, Lim PH, Palacio NM, Jimenez M, Clark JR, Graham EL, Liotta EM, Tachas G, Penaloza-MacMaster P and Koralnik IJ (2023) *Front. Immunol.* 14:1155770. doi: 10.3389/fimmu.2023.1155770

In the published article, there was an error in [Figure 4](#) as published. The figure legend did not match the figure panels. The corrected [Figure 4](#) and its caption appear below.

In the published article, there was an error in [Figure S2](#) as published. There was a grammatical error in the figure legend. The corrected [Figure S2](#) and its caption appear in the Supplementary Material.

In the published article, there was an error in [Figure S4](#) as published. There was a mistake in the figure title and the caption. The corrected [Figure S4](#) and its caption appear in the Supplementary Material.

In the published article, there was an error in [Figure S6](#) as published. There was a grammatical error in the caption. The corrected [Figure S6](#) and its caption appear in the Supplementary Material.



**FIGURE 4** Elevated Nucleocapsid-specific CD4<sup>+</sup> T cell and attenuated CD8<sup>+</sup> memory T cell activation in Neuro-PASC patients (A) CD8<sup>+</sup> TEM from NP patients show decreased activation after stimulation with N peptides. (B) Higher percentages of CD8<sup>+</sup> TEMRA cells are found in NP patients compared to control groups. (C) CD8<sup>+</sup> TEMRA cells from NP patients are less activated by N peptides compared with CC subjects. (D) CD8<sup>+</sup> TEM from NP patients have enhanced IL-6 production after N antigen stimulation compared to CC subjects on a per-cell basis (mean fluorescence intensity; MFI). (E) Increased soluble IL-6 and IL6Rβ in NP patient plasma compared with CC subjects. Data combined from 5 independent experiments with the indicated n values. \*p<0.05, \*\*p<0.01, \*\*\*\*p<0.0001 using two-tailed Student's t test with Welch's correction. "ns", not significant.

In the published article, there was an error in Figure S8 as published. There was an extra word “classical” in the figure caption. The corrected Figure S8 and its caption appear in the Supplementary Material.

The authors apologize for these errors and state that this does not change the scientific conclusions of the article in any way. The original article has been updated.

### Publisher's note

All claims expressed in this article are solely those of the authors and do not necessarily represent those of their affiliated organizations, or those of the publisher, the editors and the reviewers. Any product that may be evaluated in this article, or claim that may be made by its manufacturer, is not guaranteed or endorsed by the publisher.