



OPEN ACCESS

EDITED BY

Didier Communi,
Université libre de Bruxelles, Belgium

REVIEWED BY

Katrin Richter,
University of Giessen, Germany
Stefan Schülke,
Paul-Ehrlich-Institut (PEI), Germany

*CORRESPONDENCE

Anna Lisa Giuliani
✉ a.giuliani@unife.it

[†]These authors have contributed equally to this work

RECEIVED 08 March 2023

ACCEPTED 24 April 2023

PUBLISHED 05 May 2023

CITATION

Vultaggio-Poma V, Sanz JM, Amico A, Violi A, Ghisellini S, Pizzicotti S, Passaro A, Papi A, Libanore M, Di Virgilio F and Giuliani AL (2023) The shed P2X7 receptor is an index of adverse clinical outcome in COVID-19 patients.
Front. Immunol. 14:1182454.
doi: 10.3389/fimmu.2023.1182454

COPYRIGHT

© 2023 Vultaggio-Poma, Sanz, Amico, Violi, Ghisellini, Pizzicotti, Passaro, Papi, Libanore, Di Virgilio and Giuliani. This is an open-access article distributed under the terms of the [Creative Commons Attribution License \(CC BY\)](https://creativecommons.org/licenses/by/4.0/). The use, distribution or reproduction in other forums is permitted, provided the original author(s) and the copyright owner(s) are credited and that the original publication in this journal is cited, in accordance with accepted academic practice. No use, distribution or reproduction is permitted which does not comply with these terms.

The shed P2X7 receptor is an index of adverse clinical outcome in COVID-19 patients

Valentina Vultaggio-Poma^{1†}, Juana Maria Sanz^{2†},
Andrea Amico³, Alessandra Violi¹, Sara Ghisellini³,
Stefano Pizzicotti³, Angelina Passaro⁴, Alberto Papi⁴,
Marco Libanore⁵, Francesco Di Virgilio¹ and Anna Lisa Giuliani^{1*}

¹Department of Medical Sciences, University of Ferrara, Ferrara, Italy, ²Department of Chemical, Pharmaceutic and Agricultural Sciences, University of Ferrara, Ferrara, Italy, ³Department of Translational Medicine and for Romagna, University of Ferrara, Ferrara, Italy, ⁴Laboratory of Clinical Pathology, St. Anna Hospital, Ferrara, Italy, ⁵Infectious Diseases Unit, St. Anna Hospital, Ferrara, Italy

Introduction: The pathophysiology of the Corona Virus Disease 2019 (COVID-19) is incompletely known. A robust inflammatory response caused by viral replication is a main cause of the acute lung and multiorgan injury observed in critical patients. Inflammasomes are likely players in COVID-19 pathogenesis. The P2X7 receptor (P2X7R), a plasma membrane ATP-gated ion channel, is a main activator of the NLRP3 inflammasome, of the ensuing release of inflammatory cytokines and of cell death by pyroptosis. The P2X7R has been implicated in COVID-19-dependent hyperinflammation and in the associated multiorgan damage. Shed P2X7R (sP2X7R) and shed NLRP3 (sNLRP3) have been detected in plasma and other body fluids, especially during infection and inflammation.

Methods: Blood samples from 96 patients with confirmed SARS-CoV-2 infection with various degrees of disease severity were tested at the time of diagnosis at hospital admission. Standard haematological parameters and IL-6, IL-10, IL-1 β , sP2X7R and sNLRP3 levels were measured, compared to reference values, statistically validated, and correlated to clinical outcome.

Results: Most COVID-19 patients included in this study had lymphopenia, eosinopenia, neutrophilia, increased inflammatory and coagulation indexes, and augmented sNLRP3, IL-6 and IL-10 levels. Blood concentration of sP2X7R was also increased, and significantly positively correlated with lymphopenia, procalcitonin (PCT), IL-10, and alanine transaminase (ALT). Patients with increased sP2X7R levels at diagnosis also showed fever and respiratory symptoms, were more often transferred to Pneumology division, required mechanical ventilation, and had a higher likelihood to die during hospitalization.

Conclusion: Blood sP2X7R was elevated in the early phases of COVID-19 and predicted an adverse clinical outcome. It is suggested that sP2X7R might be a useful marker of disease progression.

KEYWORDS

COVID-19, shed P2X7R, shed NLRP3, disease progression, circulating markers

Introduction

Corona Virus Disease 2019 (COVID-19), caused by the Severe Acute Respiratory Syndrome Coronavirus 2 (SARS-CoV-2), is characterized by a massive inflammatory response that is the main cause of the acute lung injury and of the other complications observed in more critical patients (1–3). While fever and respiratory tract distress are the most common symptoms, extra-respiratory clinical manifestations in other organs/systems may also occur occasionally and be the signs of presentation (4). Eventually, critical patients may develop severe complications including multiple organ failure (MOF). A thorough understanding of the pathogenesis, as well as the identification of reliable markers of disease progression, is crucial to establish a timely therapy.

Macrophages, as a main source of inflammatory mediators, play a key role in the response to SARS-CoV-2 infection. Notably, in severe COVID-19 lung macrophages undergo a virus-triggered uncontrolled activation reminiscent of the macrophage activation syndrome (MAS) observed in some rheumatological diseases (5, 6). This unchecked macrophage activation is one of the causes of the cytokine storm syndrome typical of severe COVID-19 patients. Several key pro-inflammatory, but quite interestingly also anti-inflammatory, cytokines are released to a high level during COVID-19-associated cytokine storm (7, 8). Release of pleiotropic cytokines of the IL-1 and IL-18 family is widely thought to be due to direct or indirect activation of the NLRP3 inflammasome by SARS-CoV-2 (9, 10), but these cytokines are not always increased in COVID-19 patients (11). NLRP3-independent cytokines, such as IL-2, IL-6, TNF- α and IFN- γ are more commonly elevated and extensively involved in disease pathogenesis (10). The IL-10 case is intriguing as increase of this cytokine in COVID-19 is widely believed to be the result of a feed-back mechanism. However, this might be a simplistic interpretation overshadowing a so far unanticipated pro-inflammatory activity of IL-10. Scattered reports show that administration of pegylated recombinant human IL-10 triggered immune activation in cancer patients with encouraging results in cancer control (12, 13). Based on this evidence, it has been recently proposed that the sustained increase of IL-10 blood levels might be directly involved in the progression and aggravation of COVID-19 by stimulating release of additional cytokines involved in the “cytokine storm” and/or by accelerating T cell exhaustion (8).

The SARS-CoV-2 spike protein binds and exploits the ACE2 protein, a widely expressed plasma membrane receptor, as a main cell entry pathway (14). In macrophages, the spike protein also binds TLR4 and stimulates the associated pro-inflammatory responses (15). SARS-CoV-2-challenged cells release intracellular DAMPs (damage associated molecular patterns) (16) that, together with viral products, support macrophage hyperactivation and the release of inflammatory mediators. One of the earliest and most ubiquitous DAMPs released at all inflammatory sites is ATP (17). Extracellular ATP (eATP) binds and activates P2 receptors (P2R), among which the P2X7 receptor (P2X7R). This P2R subtype is highly expressed by immune cells, is a potent activator of the NLRP3 inflammasome, promotes IL-1 β and IL-18 release, and

has a strong cytotoxic and pro-inflammatory activity (18–22). Pyroptosis, a P2X7R- and NLRP3-dependent inflammatory cell death, is suggested to contribute to COVID-19 disease severity (23, 24).

Monocytes and macrophages express high levels of both ACE2 and P2X7R, thus are very likely to be over-activated by the co-stimulation with both the virus and eATP. Thus, the P2X7R already known to be involved in the pathogenesis of lung diseases, might be an appealing target in COVID-19 (25–28).

Recently, a shed form of the P2X7R (sP2X7R) has been detected in peripheral blood, partly associated to circulating microparticles (MPs) (29). Blood levels of sP2X7R correlated with those of the acute phase reactant C-reactive protein (CRP) and were increased in various inflammatory conditions (29, 30), COVID-19 included (31). Shed NLRP3 (sNLRP3) has also been detected in human fluids in different inflammatory pathologies (32–35) and proposed to be a marker of disease severity (36). Of interest, P2X7R activation triggers release of IL-6 *via* different mechanisms including mechanical stress, reactive oxygen species (ROS) production, and ion fluxes (37–42) while its blockade has been associated to inhibition of IL-10 secretion (43). Both cytokines are over expressed and associated to a bad prognosis in COVID-19 patients (8, 44).

In this study blood levels of sP2X7R measured at the time of diagnosis at hospital admission in a cohort of COVID-19 patients were correlated to (a) several markers of inflammation and tissue damage, (b) sNLRP3, IL-6, IL-10, and IL-1 β levels, and most importantly, (c) disease progression. The main finding was that sP2X7R correlates with pro-calcitonin (PCT) and IL-10 blood levels and allows prediction of disease progression and poor clinical outcome.

Methods

Patients

A total of 96 patients were screened at time of admission at the S. Anna University Hospital (Ferrara, Italy) between April 30 and November 30, 2020. All patients were diagnosed with COVID-19 of various degrees of severity. Patients' characteristics are reported in Tables 1, 2. Blood samples were collected in vacutainers with or without EDTA, at time of diagnosis soon after hospital admission. Whole blood samples were employed to measure haematological

TABLE 1 Patients' demographic and clinical data at admission.

	Median (Q1-Q3)
	N (%)
Age (years)	71 (54–82)
Sex Male	59 (61.4%)
Systolic blood pressure at admission (mmHg)	130 (120–140)
Diastolic blood pressure at admission (mmHg)	80 (70–90)

TABLE 2 Patients' comorbidities at admission.

	Frequency
Hypertension	57 out of 96 (58.8%)
Dementia	28 out of 95 (28.9%)
Diabetes	21 out of 96 (21.6%)
Diabetes with organ damage	11 out of 93 (11.2%)
Diabetes without organ damage	9 out of 94 (9.3%)
Heart failure	15 out of 96 (15.5%)
Ischemic heart disease	14 out of 96 (14.4%)
Stroke or TIA	10 out of 96 (10.3%)
COPD	10 out of 96 (10.3%)
PCOA	4 out of 95 (4.1%)
Localized or hematological tumor	17 out of 96 (17.5%)
Metastatic tumor	5 out of 95 (5.2%)
Chronic kidney failure III/IV/V stage	8 out of 96 (8.2%)
Moderate liver disease	3 out of 96 (3.1%)
Mild liver disease	2 out of 96 (2.1%)
Peptic ulcer	2 out of 96 (2.1%)
Hemiplegia	2 out of 96 (2.1%)

TIA, transient ischemic attack. PCOA, chronic peripheral obstructive arteriopathy. COPD, chronic obstructive pulmonary disease.

parameters as below. Sera samples were obtained following centrifugation at 4°C for 15 min at 1000xg, aliquoted and stored at -80°C until use. Freezing/thawing cycles were carefully avoided. All subjects gave written informed consent in accordance with the Declaration of Helsinki. The protocol was approved by the Ethical Committee of Ferrara district (Study 386/2020/Oss/UniFe). Demographic and clinical data, comorbidities at admission and COVID-19 related parameters were duly registered.

Haematological parameters and analytes

The following haematological parameters were measured at the Clinical Pathology Laboratory of the S. Anna University Hospital with standard methods: leukocyte, neutrophil, lymphocyte, monocyte, eosinophil, basophil, and platelet numbers; pro-thrombin Time (PT) as International Normalized Ratio (INR), activated pro-thrombin time (APTT), fibrinogen, d-dimer, ferritin, high-sensitive C reactive protein (hs-CRP), erythrocyte sedimentation rate (ESR), creatinine, estimated glomerular filtration rate (eGFR), pro-calcitonin (PCT), alanine transaminase (ALT), creatin phosphokinase (CPK), lactate dehydrogenase (LDH), brain natriuretic peptide (BNP) and ultra-sensitive troponin. IL-1 β , IL-6, IL-10, sP2X7R and sNLRP3 concentrations were measured following manufacturers' instructions with the following ELISA kits: Human IL-1 β /IL-1F2 Quantikine ELISA

kit (SLB50 Biotechne, Minneapolis, MN, USA); Human IL-6 Quantikine ELISA kit (S6050 Biotechne); Human IL-10 Quantikine ELISA kit (S1000B Biotechne); Human P2X purinoceptor 7 (P2RX7) ELISA kit (CSB-EL017325HU Cusabio, Houston, Texas, USA); Human NACHT, LRR and PYD domains-containing protein 3 (NLRP3/Cor17/CIAS1/NALP3/PYPAF1) ELISA kit (CSB-E15885H Cusabio). Optical density was measured at 450 nm with wavelength correction at 570 nm with a Multiskan FC spectrophotometer (Thermo Scientific, Waltham, MA, USA). The reference limits for these analytes were obtained from references reported in the ELISA kits (IL-6, IL-10 and IL-1 β), or from previous publications (sP2X7R ref (29) and sNLRP3 ref (32)).

Statistics

Continuous variables were analysed for normal distribution using Shapiro-Wilk tests and expressed as median and interquartile range (IQR) for not-normally distributed variables. Comparisons between groups were performed with Mann-Whitney U test and among groups with Kruskal-Wallis' test. Categorical variables were presented as counts and percentages and compared with exact Fisher or chi-squared tests.

Spearman rank correlation was used to assess the bivariate association between the parameters of interest. A two-sided p-value ≤ 0.05 was considered statistically significant. All analyses were performed using SPSS v. 25.0 statistical software (International Business Machines, New York, NY, USA). Missing data for each variable of interest did not exceed 5%.

Results

Patients' characteristics at admission and during hospitalization

Ninety-six COVID-19 patients, 59 males and 37 females with a median age of 71 years, with various degrees of COVID-19 severity were included in this study (Table 1). Main comorbidities at admission are shown in Table 2. Most patients (58.8%) were affected by hypertension. Dementia and diabetes, the latter with or without organ damage, were also present with high frequency (28.9% and 21.6%, respectively). Other relevant pathologies were heart failure (15.5%), ischemic heart disease (14.4%), transient ischemic attack (TIA) or stroke (10.3%), and haematological/localized (17.5%) or metastatic (5.2%) cancer. Chronic obstructive pulmonary disease (COPD), or chronic peripheral obstructive arteriopathy (CPOA) were present in 10.3 and 4.1% of patients, respectively, whereas chronic kidney failure was present in 8.2% of patients.

At admission, 9.3% of the patients showed gastrointestinal symptoms/signs, 14.4% fever, 25.8% respiratory symptoms/signs, while 43.3% both fever and respiratory symptoms (Table 3). During hospitalization, 40.2% of patients were transferred to the Pneumology

TABLE 3 COVID-19 related parameters at admission and during hospitalization.

	Frequency
Fever without other symptoms at admission	14 out of 94 (14.4%)
Respiratory symptoms and signs at admission	25 out of 95 (25.8%)
Fever and respiratory symptoms and signs at admission	42 out of 95 (43.3%)
Gastrointestinal symptoms and signs at admission	9 out of 95 (9.3%)
Transfer to Pneumology division	39 out of 93 (40.2%)
Requirement for mechanical ventilation	26 out of 95 (26.8%)
Transfer to Intensive Care Unit (ICU)	13 out of 93 (13.4%)
Death during hospitalization	10 out of 96 (10.3%)
Death within 100 days from admission	24 out of 90 (24.7%)

division, 26.8% required mechanical ventilation, and 13.4% were transferred to intensive care unit (ICU). Finally, 10.3% of patients died during hospitalization, and 24.7% after hospital discharge (Table 3).

Laboratory parameters and blood sP2X7R and sNLRP3 levels

Patients' blood samples were analysed. Laboratory and clinical parameters are shown in Table 4. Leucocytosis was present in 27.8% and leukopenia in 11.1% of the patients; neutrophilia was present in 31.5% and neutropenia in 7.9% of the patients; lymphopenia and eosinopenia, common findings in COVID-19, were found in 65.2% and 53.9% of patients, respectively. Monocytes were increased in 10.1% and decreased in 6.7% of the patients, while basophils were normal in nearly all patients (94.4%). Thrombocytopenia was present in 17.8% and thrombocytosis in 3.3% of patients. PT(INR) was increased above the reference limit in 21% of patients, APTT in 96.6%. Fibrinogen and d-dimer were elevated in most patients, 72.6% and 68.0%, respectively. CRP was above 3 mg/L in 54.7%, and between 0.5 and 3 mg/L in 32.0% of patients. Inflammatory status of most patients was also witnessed by increased ESR (73.3%) and ferritin (35% of male and 33.3% of female patients; male and female patients were evaluated against their

TABLE 4 Haematological, inflammatory, and coagulative parameters.

	Median (Q1-Q3)	Reference values	% under	% within	% over
Leukocytes (n cells x10 ³ /μl)	7.8 (5.4-11.8)	4.0 – 11.0	11.1	61.1	27.8
Neutrophils (n cells x10 ³ /μl)	5.4 (3.3-9.2)	2.0 – 7.0	7.9	60.6	31.5
Lymphocytes (n cells x10 ³ /μl)	1.3 (0.8-1.8)	1.5 – 5.0	65.2	34.8	0
Monocytes (n cells x10 ³ /μl)	0.55 (0.39-0.82)	0.2 – 1.0	6.7	83.2	10.1
Eosinophils (n cells x10 ³ /μl)	0.03 (0.00-0.12)	0.04 – 0.4	53.9	38.2	7.9
Basophils (n cells x10 ³ /μl)	0.02 (0.01-0.04)	0.01 – 0.1	4.5	94.4	1.1
Platelets (n cells x10 ³ /μl)	224.5 (162.8-318.8)	150 – 450	17.8	78.9	3.3
Fibrinogen (mg/dl)	477.5 (393.0-615.0)	150 – 400	0	27.3	72.7
PT (INR) (secs)	1.1 (1.0-1.2)	0.8 – 1.2	0	79	21
APTT (secs)	1.0 (0.9-1.0)	0.8 – 1.2	3.4	0	96.6
d-dimer (mg/dl)	1.1 (0.5-2.5)	<0.5	0	26.4	73.6
CRP (mg/L)	3.8 (1.0-10.7)	0 – 3	13.3 (<0.5)	32 (0.5 – 3)	54.7 (>3)
ESR (mm/h)	34.0 (19.0-67.5)	0 – 20	0	26.7	73.3
Ferritin (ng/ml)	222.0 (69.5-475.3)	24 – 335 M 11 – 306 F	20 8.3	45 58.4	35 33.3
PCT (ng/ml)	0.2 (0.1-0.9)	<0.5 >2	0 0	57.9 84.2	42.1 15.8
Creatinine (mg/dl)	1.03 (0.85-1.23)	0.5 – 1.2	0	77.9	22.1
eGFR (ml/min)	70.3 (52.3-90.0)	90 – 120	73.3	24.1	2.6

(Continued)

TABLE 4 Continued

	Median (Q1-Q3)	Reference values	% under	% within	% over
ALT (U/L)	20.0 (12.8-34.5)	<50 M <35 F	0 0	83.9 88.2	16.1 11.8
CPK (U/L)	97.0 (56.0-197.0)	<145	0	61.3	38.7
LDH (U/L)	239.0 (206.0-342.0)	<248	0	51.9	48.1
BNP (pg/ml)	109.0 (34.0-243.0)	0 – 100	0	58.8	49.2
Troponin (ng/L)	17.0 (5.5-45.0)	<20 M <12 F	0 0	53.8 42.1	46.2 57.9

The analytes were measured using standard methods at the Laboratory division of the S. Anna University Hospital of Ferrara. For ferritin, ALT and troponin different sex-related reference values were employed. For CRP and PCT two different cut-off values, indicating clinical condition worsening, were considered. PT (INR); pro-thrombin time (international normalized ratio); APTT, activated pro-thrombin time; CRP, C reactive protein; ESR, erythrocyte sedimentation rate; PCT, pro-calcitonin; eGFR, estimated glomerular filtration rate; ALT, alanine transaminase; CPK, creatine phosphokinase; LDH, lactate dehydrogenase; BNP, B natrium peptide.

respective reference values). In 42.1% of patients PCT was above 0.5 ng/ml, and in 15.8% PCT values were higher than 2 ng/ml, indicating the presence of infection or sepsis. Creatinine was increased in 22.1% and eGFR was reduced in the majority (73.3%) of patients. ALT was increased in 13.0% of patients (male and female patients were evaluated against their respective reference values), while CPK was elevated in 38.7% of patients. LDH and BNP were elevated in 48.1% and 49.2% of patients, respectively, whereas troponin showed a higher increase in female (57.9%) than in male patients (46.2%) (Table 4). Among main inflammatory cytokines, IL-6 and IL-10 were increased in most patients, 61.9% and 79.4%, respectively, whereas IL-1 β only in a small percentage (23.9%) (Table 5). Very interestingly, sP2X7R and sNLRP3 were significantly increased in 61.1% and 74.0% of patients, respectively (Table 5). Differences between men and women were not significant as regard age and blood levels of sP2X7R, sNLRP3, IL-1 β , IL-10, and CRP. On the contrary, men showed IL-6 blood levels significantly higher than women ($p=0.003$) (not shown). However, this finding has no relevance to our data because the percentage of men and women was not significantly different in the different conditions evaluated (presence of fever and respiratory symptoms, transfer to the Pneumology division, need for mechanical ventilation, transfer to the ICU and death during hospitalization).

sP2X7R and sNLRP3 correlations with hematological, inflammatory, and coagulation indexes

Shed P2X7R at diagnosis negatively and significantly correlated with age ($r = -0.244$; $p = 0.017$), and lymphocyte ($r = -0.215$; $p = 0.046$), and eosinophil ($r = -0.254$; $p = 0.018$) blood count, thus being lower in older patients and higher in patients with lymphopenia and eosinopenia, common laboratory features of COVID-19 patients (Table 6). Shed P2X7R did not significantly correlate with CRP but, very interestingly, showed a strong positive correlation with PCT ($r = 0.355$; $p = 0.009$), an index of bacterial infection more specific than CRP. Neither sNLRP3, IL-6 nor IL-10 showed a stronger correlation with PCT than sP2X7R. Shed P2X7R also significantly correlated with IL-10 ($r = 0.336$; $p = 0.008$), a cytokine very likely implicated in COVID-19 pathogenesis (8) and often elevated in COVID-19 patients (44). Shed P2X7R positively correlated with ALT ($r = 0.269$; $p = 0.012$) and negatively with BNP ($r = -0.361$; $p = 0.007$), indexes of liver and heart injury or stress, respectively, and, at near significance, with sNLRP3 ($r = 0.218$; $p = 0.057$) (Table 6).

On the other hand, sNLRP3, positively correlated with several laboratory parameters: total leukocyte ($r = 0.248$; $p = 0.038$),

TABLE 5 Blood levels of sP2X7R, sNLRP3, and cytokines.

	Median (Q1-Q3)	Reference values	% under	% within	% over
IL-6 (pg/ml)	18.2 (9.5-42.8)	1.5 – 15	2.1	36	61.9
IL-10 (pg/ml)	10.9 (8.2-21.3)	<7.8	0	20.6	79.4
IL-1 β (pg/ml)	1.6 (0.5-3.5)	<3.9	0	76.1	23.9
sP2X7R (pg/ml)	97.4 (50.2-174.4)	16.7 – 82.17	3.2	35.7	61.1
sNLRP3 (pg/ml)	250 (60.0-760.0)	9.0 - 49.0	10.4	15.6	74.0

The analytes were measured following ELISA kits manufacturers' instructions. The reference values for IL-6, IL-10 and IL-1 β were obtained from the corresponding ELISA kits. The reference values for sP2X7R and sNLRP3 were those contained in the references [29] and [32], respectively. IL-6: interleukin 6; IL-10: interleukin 10; IL-1 β : interleukin 1 β ; sP2X7R: soluble P2X7 receptor; sNLRP3: soluble nucleotide-binding oligomerization domain (NOD), leucine-rich repeat (LRR)-containing protein (NLRP) 3.

TABLE 6 Spearman correlation analysis between parameters measured in this study.

	sP2X7R		sNLRP3		IL-6		IL-10		IL-1 β	
	r	P-value	r	P-value	r	P-value	r	P-value	r	P-value
age	-0.244	0.017	-0.033	0.774	0.178	0.083	0.189	0.141	0.079	0.451
Leukocytes	-0.040	0.711	0.248	0.038	0.337	0.001	0.253	0.055	0.053	0.624
Neutrophils	-0.019	0.865	0.258	0.032	0.367	<0.001	0.332	0.012	0.105	0.336
Lymphocytes	-0.215	0.046	-0.069	0.574	-0.246	0.020	-0.480	<0.001	-0.158	0.147
Eosinophils	-0.254	0.018	0.074	0.543	0.063	0.558	-0.257	0.054	-0.310	0.004
Monocytes	-0.020	0.853	0.344	0.004	0.302	0.004	-0.028	0.836	0.021	0.847
CRP	0.144	0.184	0.237	0.047	0.603	<0.001	0.358	0.008	0.029	0.812
Ferritin	0.204	0.298	0.686	0.002	0.526	0.002	0.350	0.142	-0.085	0.673
PCT	0.355	0.009	0.178	0.259	0.201	0.134	0.130	0.431	-0.232	0.088
d-dimer	-0.209	0.085	0.288	0.033	0.310	0.009	-0.012	0.934	-0.175	0.160
fibrinogen	0.146	0.180	0.127	0.301	0.316	0.003	0.178	0.184	0.251	0.030
creatinine	0.101	0.338	0.053	0.653	0.204	0.048	0.263	0.041	0.247	0.017
eGFR	-0.039	0.754	-0.148	0.272	-0.329	0.004	-0.305	0.042	-0.207	0.081
ALT	0.269	0.012	0.057	0.636	0.085	0.426	0.157	0.239	0.077	0.480
CPK	-0.073	0.554	-0.085	0.527	0.126	0.282	0.291	0.042	0.239	0.044
LDH	0.187	0.104	0.389	0.002	0.320	0.004	0.206	0.132	-0.105	0.359
BNP	-0.361	0.007	0.185	0.240	0.290	0.026	0.327	0.052	0.010	0.943
sP2X7R			0.218	0.057	0.148	0.153	0.336	0.008	0.021	0.845
sNLRP3	0.218	0.057			0.368	0.001	0.290	0.035	0.157	0.178
IL-6	0.148	0.153	0.368	0.001			0.487	<0.001	0.029	0.781
IL-10	0.336	0.008	0.290	0.035	0.487	<0.001			0.213	0.099
IL-1 β	0.043	0.682	0.182	0.115	0.029	0.781	0.213	0.099		

r, Rho di Spearman; significant correlations are in bold. CRP, C reactive protein; PCT, pro-calcitonin; eGFR, estimated glomerular filtration time; ALT, alanine transaminase; CPK, creatine phosphokinase; LDH, lactate dehydrogenase; BNP, B natrium peptide; sP2X7R, soluble P2X7 receptor; sNLRP3, soluble nucleotide-binding oligomerization domain (NOD), leucine-rich repeat (LRR)-containing protein (NLRP) 3; IL-6: interleukin 6; IL-10: interleukin 10; IL-1 β : interleukin 1 β .

neutrophil ($r = 0.258$; $p = 0.032$), and monocyte ($r = 0.344$; $p = 0.004$) counts, CRP ($r = 0.237$; $p = 0.047$), ferritin ($r = 0.686$; $p = 0.002$), d-dimer ($r = 0.288$; $p = 0.033$), LDH ($r = 0.389$; $p = 0.002$), IL-6 ($r = 0.368$; $p = 0.001$) and IL-10 ($r = 0.290$; $p = 0.035$) levels (Table 6).

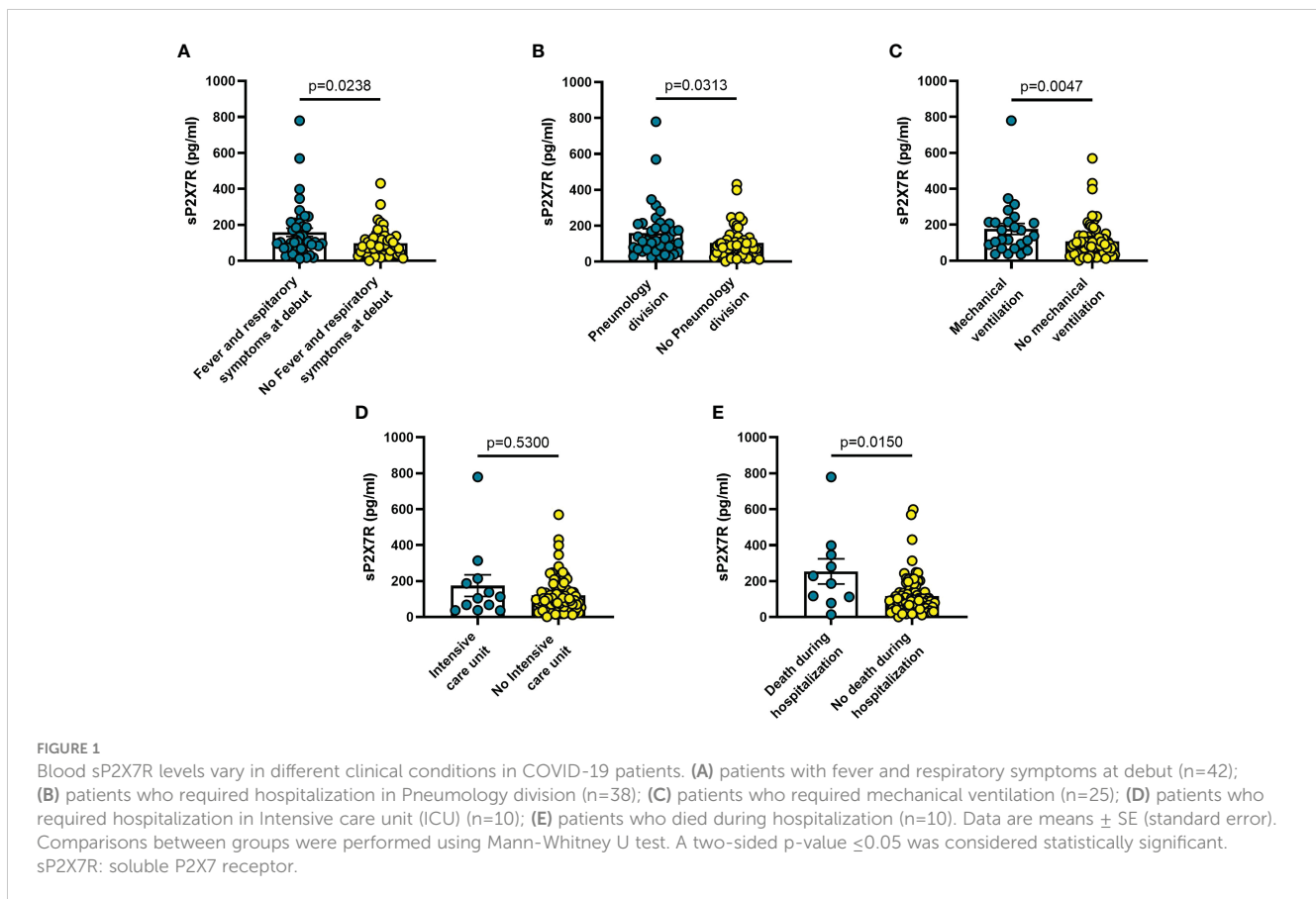
Of the three major inflammatory cytokines tested in this cohort, IL-6 positively correlated with leukocyte ($r = 0.337$; $p = 0.001$), neutrophil ($r = 0.367$; $p = <0.001$), and monocyte ($r = 0.302$; $p = 0.004$) counts, and with CRP ($r = 0.603$; $p \leq 0.001$), ferritin ($r = 0.526$; $p = 0.002$), d-dimer ($r = 0.310$; $p = 0.009$), fibrinogen ($r = 0.316$, $p = 0.003$), creatinine ($r = 0.204$; $p = 0.048$), LDH ($r = 0.320$; $p = 0.004$), BNP ($r = 0.290$; $p = 0.026$), sNLRP3 ($r = 0.368$, $p = 0.001$) and IL-10 ($r = 0.487$; $p \leq 0.001$) levels (Table 6). IL-6 negatively correlated with lymphocyte number ($r = -0.246$; $p = 0.020$) and with eGFR ($r = -0.329$; $p = 0.004$). IL-10 showed significant positive correlation with neutrophil count ($r = 0.332$; $p = 0.012$), CRP ($r = 0.358$; $p = 0.008$), creatinine ($r = 0.263$; $p = 0.041$), CPK ($r = 0.291$; $p = 0.042$), sP2X7R ($r = 0.336$, $p = 0.008$), sNLRP3 ($r = 0.290$, $p = 0.035$) and IL-6 ($r = 0.487$, $p < 0.001$), and negatively correlated with lymphocyte count ($r = -0.480$; $p \leq 0.001$) and eGFR ($r = -0.305$; $p = 0.042$) (Table 6). On

the contrary, IL-1 β showed significant correlations with only a few of the investigated parameters, that is negative correlation with eosinophil count ($r = -0.310$; $p = 0.004$) and positive correlations with fibrinogen ($r = 0.251$; $p = 0.030$), creatinine ($r = 0.247$; $p = 0.017$), and CPK ($r = 0.239$; $p = 0.044$) (Table 6).

sP2X7R and sNLRP3 relationships with clinical disease progression

To further investigate the relevance of sP2X7R and sNLRP3 in COVID-19, we used the Mann-Whitney U test for independent samples to verify the relationships between sP2X7R, sNLRP3, the tested cytokines, CRP, and haematological parameters at diagnosis, with different clinical progression indexes and outcomes.

Blood levels of sP2X7R were significantly higher in patients with fever and respiratory symptoms at diagnosis ($n = 42$) than in symptom-free patients ($n = 51$; $p = 0.024$) (Figure 1A), in patients who were transferred to Pneumology division ($n = 38$)



compared to non-transferred patients ($n = 53$; $p = 0.031$) (Figure 1B), in patients who required mechanical ventilation ($n = 25$) versus patients who did not ($n = 68$; $p = 0.005$) (Figure 1C), and in patients who died during hospitalization ($n = 10$) versus those who survived ($n = 85$; $p = 0.015$) (Figure 1E).

On the other hand, sNLRP3 was not significantly different in patients with or without fever or respiratory symptoms at admission (Figure 2A), or in patients transferred to Pneumology division (Figure 2B). On the contrary, sNLRP3 was significantly higher in patients who required mechanical ventilation ($n = 20$; $p = 0.039$) (Figure 2C), and in those transferred to the ICU ($n = 10$; $p = 0.034$) (Figure 2D) even though, despite its higher level in these latter patients, it was not predictive of an early death during hospitalization (Figure 2E).

Increased blood levels of IL-6 were predictive of the need of mechanical ventilation ($n = 26$; $p = 0.032$) (Figure 3C), admission to ICU ($n = 13$; $p = 0.033$) (Figure 3D) or death during hospitalization ($n = 10$; $p = 0.0005$) (Figure 3E), whereas IL-10 levels were significantly increased only in patients who died during hospitalization ($n = 8$; $p = 0.006$) (Figure 4E). IL-1 β levels showed no significant relationship with any of the clinical conditions considered (Figure 5). Finally, CRP was significantly increased in patients who needed admission to ICU ($n = 9$; $p = 0.041$) (Figure 6D) or who died during hospitalization ($n = 9$; $p < 0.0001$) (Figure 6E).

Among other haematological parameters measured at diagnosis, the only significant changes were leucocytosis ($p = 0.0013$) or lymphopenia ($p = 0.017$) in patients deceased during

hospitalization ($n = 9$) (Figures 7A, B), as well neutrophilia in patients who required mechanical ventilation ($n = 25$; $p = 0.041$) (Figure 7C), admission to ICU ($n = 13$; $p = 0.033$) (Figure 7D), or deceased during hospitalization ($n = 9$; $p = 0.002$) (Figure 7E).

The findings shown in Figures 1–6 demonstrate that sP2X7R was the unique analyte significantly elevated in patients with fever and respiratory symptoms at diagnosis ($n = 42$), and in those who were later hospitalized in the Pneumology division ($n = 38$). Shed P2X7R, together with sNLRP3, IL-6 and the neutrophil count, was also significantly increased in patients who required mechanical ventilation during their stay in the hospital ($n = 26$), whereas sNLRP3, IL-6, CRP, and neutrophils were increased in patients transferred to ICU ($n = 13$). Finally, sP2X7R at diagnosis was increased in patients who died during hospitalization ($n = 10$). These patients also showed variation of some of the other haematological parameters tested at admission: increased IL-6, IL-10 and CRP, leucocytosis, neutrophilia, and lymphopenia. Therefore, sP2X7R besides being the only analyte significantly elevated at diagnosis in COVID-19 patients with fever and respiratory symptoms, is also an indicator predicting, on par with IL-6, progressive worsening of clinical conditions.

sP2X7R and sNLRP3 relationships with clinical outcome

We finally investigated sP2X7R, sNLRP3, together with IL-6, IL-10, IL-1 β , and CRP blood levels in patients who had three

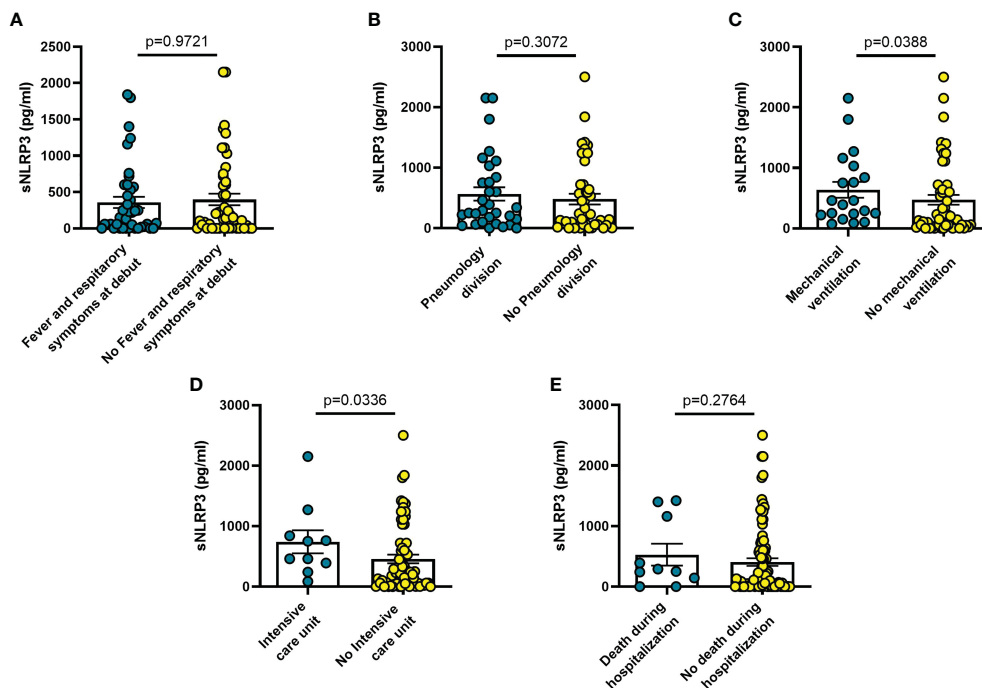


FIGURE 2
 Blood sNLRP3 levels vary in different clinical conditions in COVID-19 patients. **(A)** patients with fever and respiratory symptoms at debut (n=42); **(B)** patients who required hospitalization in Pneumology division (n=38); **(C)** patients who required mechanical ventilation (n=25); **(D)** patients who required hospitalization in Intensive care unit (ICU) (n=10); **(E)** patients who died during hospitalization (n=10). Data are means ± SE (standard error). Comparisons between groups were performed using Mann-Whitney U test. A two-sided p-value ≤0.05 was considered statistically significant. sNLRP3: soluble nucleotide-binding oligomerization domain (NOD), leucine-rich repeat (LRR)-containing protein (NLRP) 3.

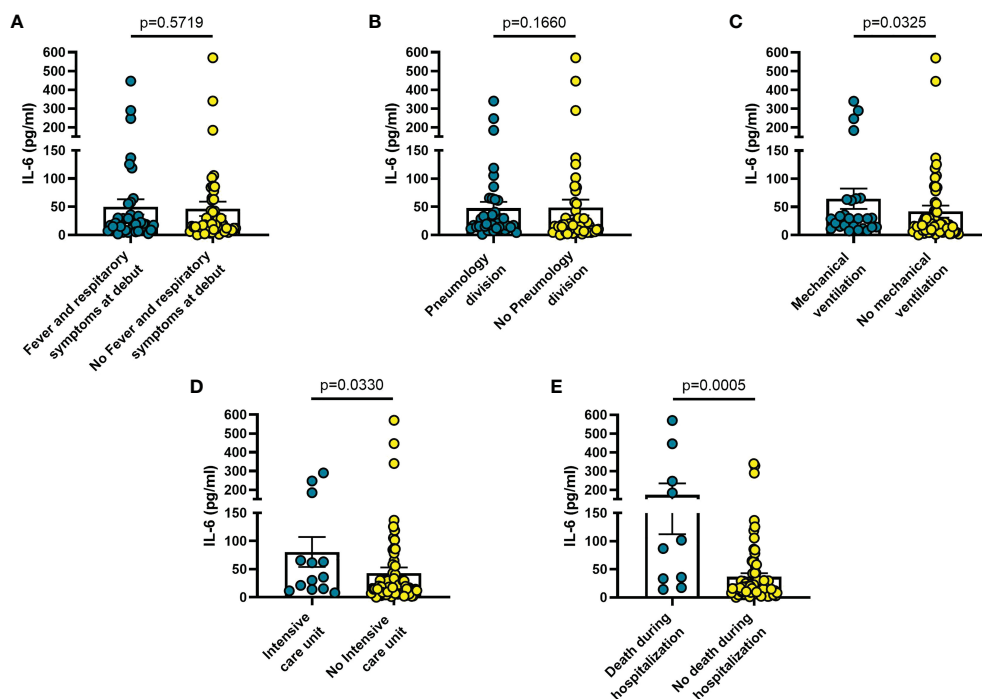


FIGURE 3
 Blood IL-6 levels vary in different clinical conditions in COVID-19 patients. **(A)** patients with fever and respiratory symptoms at debut (n=42); **(B)** patients who required hospitalization in Pneumology division (n=38); **(C)** patients who required mechanical ventilation (n=26); **(D)** patients who required hospitalization in Intensive care unit (ICU) (n=13); **(E)** patients who died during hospitalization (n=10). Data are means ± SE (standard error). Comparisons between groups were performed using Mann-Whitney U test. A two-sided p-value ≤0.05 was considered statistically significant. IL-6: interleukin 6.

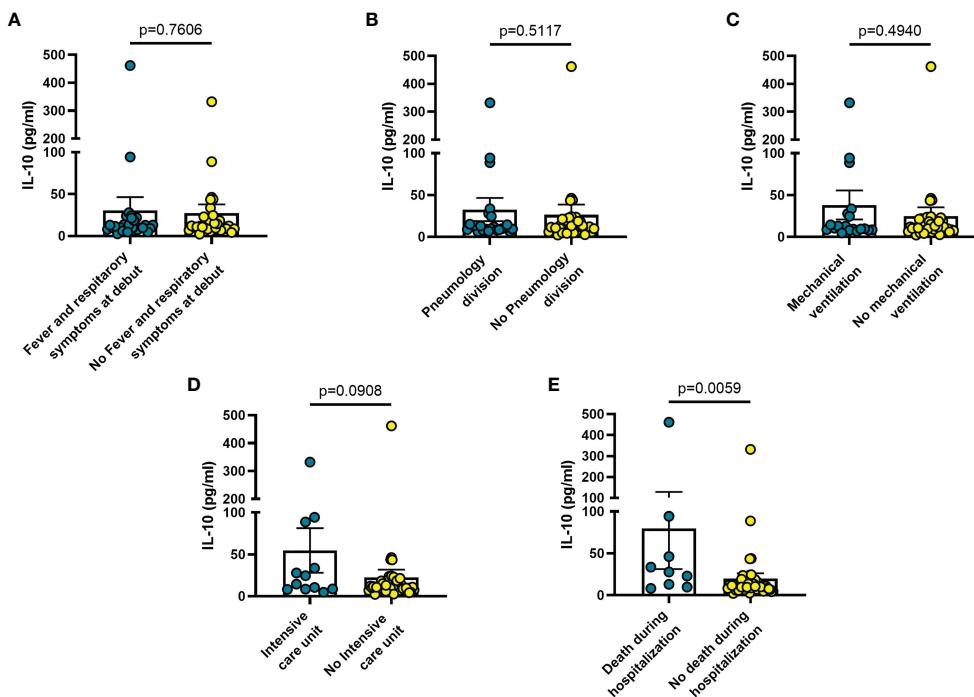


FIGURE 4
 Blood IL-10 levels vary in different clinical conditions in COVID-19 patients. (A) patients with fever and respiratory symptoms at debut (n=42); (B) patients who required hospitalization in Pneumology division (n=38); (C) patients who required mechanical ventilation (n=26); (D) patients who required hospitalization in Intensive care unit (ICU) (n=13); (E) patients who died during hospitalization (n=9). Data are means \pm SE (standard error). Comparisons between groups were performed using Mann-Whitney U test. A two-sided p-value ≤ 0.05 was considered statistically significant. IL-10: interleukin 10.

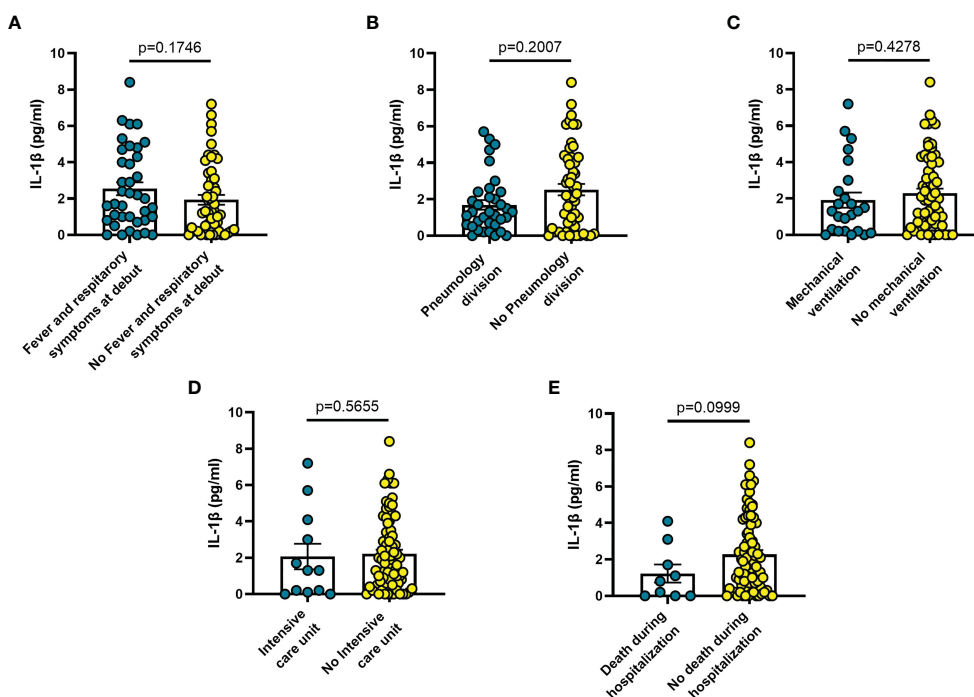


FIGURE 5
 Blood IL-1 β levels vary in different clinical conditions in COVID-19 patients: (A) patients with fever and respiratory symptoms at debut (n=42); (B) patients who required hospitalization in Pneumology division (n=38); (C) patients who required mechanical ventilation (n=26); (D) patients who required hospitalization in Intensive care unit (ICU) (n=13); (E) patients who died during hospitalization (n=9). Data are means \pm SE (standard error). Comparisons between groups were performed using Mann-Whitney U test. A two-sided p-value ≤ 0.05 was considered statistically significant. IL-1 β : interleukin 1 β .

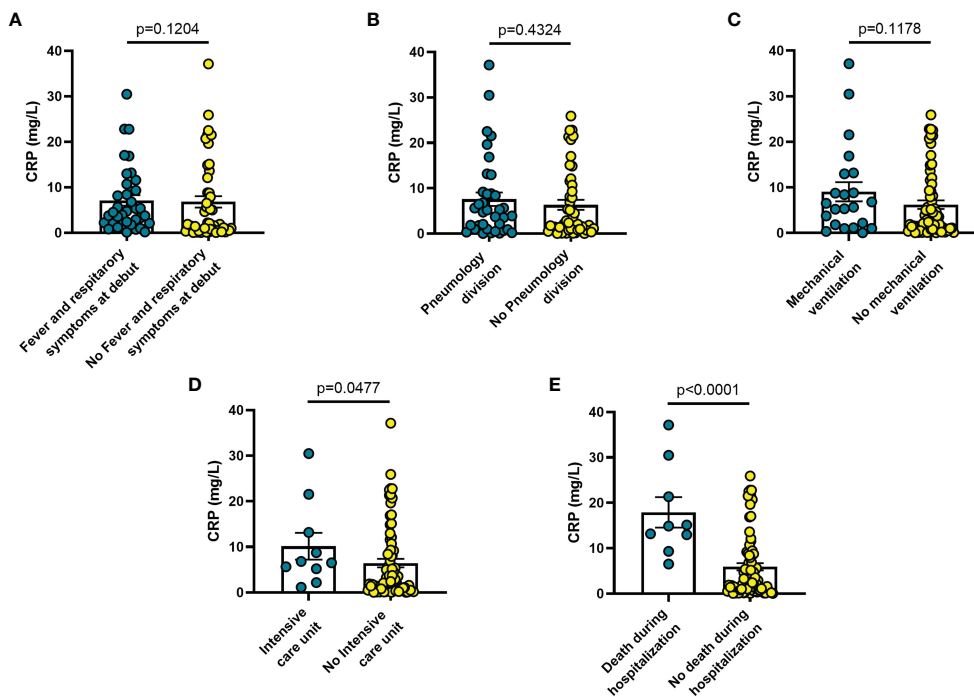


FIGURE 6
 Blood CRP levels vary in different clinical conditions in COVID-19 patients: **(A)** patients with fever and respiratory symptoms at debut (n=42); **(B)** patients who required hospitalization in Pneumology division (n=38); **(C)** patients who required mechanical ventilation (n=26); **(D)** patients who required hospitalization in Intensive care unit (ICU) (n=9); **(E)** patients who died during hospitalization (n=7). Data are means \pm SE (standard error). Comparisons between groups were performed using Mann-Whitney U test. A two-sided p-value ≤ 0.05 was considered statistically significant. CRP: C reactive protein.

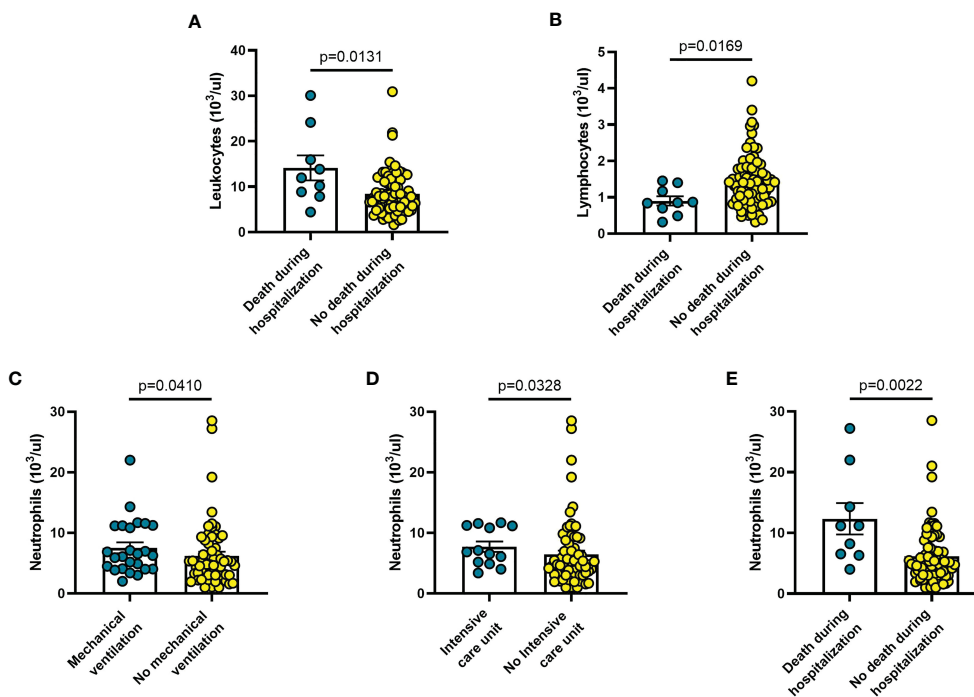


FIGURE 7
 Haematological parameters vary in different clinical conditions in COVID-19 patients: **(A)** patients with fever and respiratory symptoms at debut (n=42); **(B)** patients who required hospitalization in Pneumology division (n=38); **(C)** patients who required mechanical ventilation (n=26); **(D)** patients who required hospitalization in Intensive care unit (ICU) (n=9); **(E)** patients who died during hospitalization (n=9). Data are means \pm SE (standard error). Comparisons between groups were performed using Mann-Whitney U test. A two-sided p-value ≤ 0.05 was considered statistically significant.

different clinical outcomes: a) survival at 100 days from diagnosis; b) death after hospital discharge within 100 days from diagnosis; c) death during hospitalization.

Patients who died during hospitalization ($n = 10$) had significantly higher levels at diagnosis of sP2X7R ($p = 0.025$), IL-6 ($p = 0.0002$), IL-10 ($p = 0.0051$), and CRP ($p < 0.0001$) than patients who survived at least 100 days from diagnosis ($n = 64$) (Figures 8A, C, D, F). Patients deceased during hospitalization also had significantly more elevated levels of sP2X7R ($p = 0.003$), IL-6 ($p = 0.022$), and CRP ($p = 0.001$), and of IL-10 at limit of significance ($p = 0.062$), than patients who died after hospital discharge within 100 days from diagnosis ($n = 14$) (Figures 8A, C, D, F). No significant difference was found in sNLRP3, IL-6, IL-10, and CRP levels, except sP2X7R ($p = 0.020$) between patients who died after hospital discharge and patients who survived at least 100 days from diagnosis (Figure 8A). Finally, neither sNLRP3 (Figure 8B), nor IL-1 ($p = 0.1493$) (Figure 8E) were significantly different between the groups considered.

Discussion

The SARS-CoV-2 infection is accompanied by fearful complications due not simply to direct virus-mediated tissue injury, but also to dysregulated hyperinflammation triggered by activation of innate immunity (2). A feature of this condition is the uncontrolled release of inflammatory cytokines such as IL-6, TNF- α , IL-10, IL-1 β , and the extensive stimulation of the coagulation pathway (45). Recently, soluble forms of P2X7R and NLRP3 (sP2X7R and sNLRP3) were shown to be elevated in inflammation and sepsis, and tentatively added to the panoply of inflammatory mediators (29, 31, 32). These two molecules are intimately associated as the P2X7R is a potent activator of NLRP3, and both cooperate in promoting maturation and release of IL-1 β and IL-18 (18, 46). The P2X7R is an integral membrane receptor, while NLRP3 is a cytoplasmic protein, but their presence in the blood should not be a surprise as both can be shed *via* a MP-mediated mechanism (29, 31, 32). Being both P2X7R and NLRP3

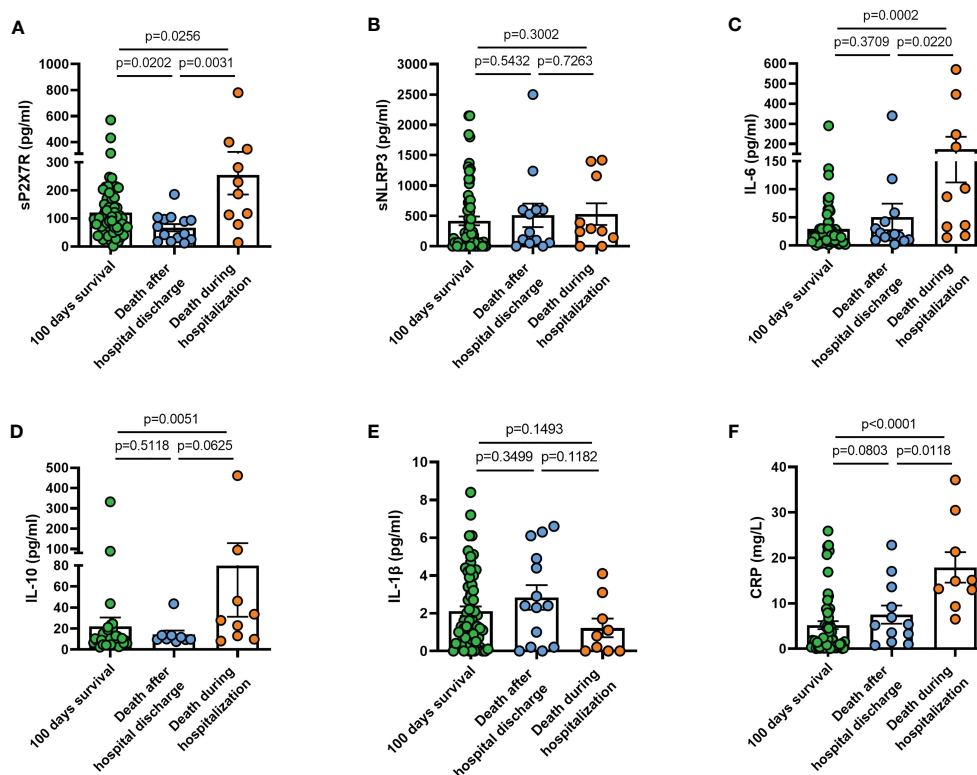


FIGURE 8

Blood levels at diagnosis of sP2X7R, sNLRP3, IL-6, IL-10, IL-1 β , and CRP in patients who had different clinical outcomes. (A) sP2X7R was significantly higher in patients who died during hospitalization ($n = 10$) than in patients who died after hospital discharge within 100 days from diagnosis ($n = 14$) ($p = 0.031$), and in patients who survived at least 100 days from diagnosis ($n = 64$) ($p = 0.025$). sP2X7R was also significantly higher in patients who survived at least 100 days from diagnosis respect to patients who died during hospitalization ($p = 0.020$). (B) sNLRP3 levels were not significantly different between the different groups. (C) IL-6 was significantly higher in patients who died during hospitalization respect to patients who survived at least 100 days ($p = 0.0002$), and respect to patients who died after hospital discharge ($p = 0.022$). (D) IL-10 was significantly higher in patients who died during hospitalization respect to patients who survived at least 100 days ($p = 0.005$), and at limit of significance ($p = 0.062$) respect to patients deceased after hospital discharge. (E) IL-1 β levels were not significantly different between the different groups. (F) CRP was significantly higher in patients deceased during hospitalization respect to patients who survived at least 100 days ($p < 0.0001$), and respect to patients who died after hospital discharge ($p = 0.011$). Data are means \pm SE (standard error). Comparisons between groups were performed using Mann-Whitney U test. A two-sided p -value 0.05 was considered statistically significant. sP2X7R, soluble P2X7 receptor; sNLRP3, soluble nucleotide-binding oligomerization domain (NOD), leucine-rich repeat (LRR)-containing protein (NLRP) 3; IL-6, interleukin 6; IL-10, interleukin 10; IL-1 β , interleukin 1 β ; CRP, C reactive protein.

tightly associated to the release of inflammatory cytokines, a reasonable anticipation is that their blood levels in COVID-19 should parallel that of the cytokines typically overexpressed in this disease, e.g., IL-6 and IL-10. In the patient cohort investigated in this study, we found a significant correlation of IL-6 with sNLRP3, but not with sP2X7R. On the other hand, sP2X7R correlated significantly with IL-10, whose activity might rather unexpectedly be related to the potentiation of the inflammatory response aggravating disease course in COVID-19 patients (8).

The main effect of the stimulation of the P2X7R-NLRP3 axis in mononuclear phagocytes is the maturation and release of IL-1 β (47), thus we anticipated that increased sP2X7R and sNLRP3 blood levels might correlate with circulating IL-1 β . However, IL-1 β levels were increased only in a small percentage of patients, with no significant correlation with either sP2X7R or sNLRP3 levels. After all, the role of IL-1 β in COVID-19 is not defined and not always correlated with disease severity (11). In our study there was a weak not statistically significant correlation between sNLRP3 and sP2X7R blood levels. This suggested to us that blood levels at diagnosis of these two analytes might identify patient subgroups with different clinical outcomes. We therefore split the patient population into six subgroups according to symptom presentation at diagnosis, and to their clinical progression and outcome: 1) patients with fever and respiratory symptoms at hospitalization; 2) patients who needed transfer to the Pneumology division; 3) patients who needed mechanical ventilation; 4) patients who were admitted to ICU; 5) patients who died during hospitalization; 6) patients who deceased within 100 days after hospital discharge. Soluble P2X7R was significantly elevated in patients of all these subgroups, except in patients admitted to ICU, where sP2X7R increase did not reach statistical significance, and in patients who died after hospital discharge. Soluble P2X7R blood levels in this latter group were lower than in the patients who survived longer than 100 days after hospital release, and in the patients who died during hospitalization. Soluble NLRP3 was elevated in patients who needed mechanical ventilation and were admitted to ICU, but not in patients with respiratory symptoms at admission or who died during hospitalization. IL-6 and CRP were elevated at admission in patients who were admitted to ICU and in those who died during hospitalization. Finally, IL-10 was increased only in those patients who died during hospitalization.

In the patient cohort investigated in the present study, sNLRP3, but not sP2X7R, correlated with CRP levels. This is partially at odd with our previous findings showing a correlation between sP2X7R and CRP in a cohort of patients affected by different pathologies (infections, cancer, ischemia and others) (29). In this previous study, the correlation between sP2X7R and CRP was indeed weak in infectious patients (29). On the other hand, in the present study, sP2X7R showed a very strong correlation with PCT. Although the prognostic significance of PCT in COVID-19 is debated (48, 49), it is well known that PCT is a more accurate marker of bacterial infection than CRP, and it was recently found higher in COVID-19 patients with worse clinical progression despite no difference in CRP (50). Therefore, PCT might identify in association with

sP2X7R those COVID-19 patients at high risk of developing bacterial complications.

While increased sP2X7R blood concentrations were anticipated given the well-known role of this receptor in inflammation (18) (sP2X7R is elevated in the same percentage of patients as IL-6, i.e. slightly over 60%), the novel finding is that sP2X7R increases were selectively associated with more severe symptoms at admission (fever and dyspnoea), and predicted a worse outcome. These findings expand previous observations by Pelegrin and co-workers reporting a correlation between sP2X7R plasma levels and COVID-19 severity (31). In addition, we now show that not only sP2X7R correlates with COVID-19 severity but, unique among the analytes investigated, might be an index of the clinical outcome.

The source and mechanism of release of sP2X7R are open questions. We showed previously that the P2X7R can be shed in association with MPs upon stimulation of monocyte/macrophage cells with eATP (29). Circulating mononuclear phagocytes might therefore be a likely source although other blood cell types (e.g., neutrophils, lymphocytes, platelets, erythrocytes) are known to express the P2X7R, and might participate in its release (51). The other open question is the mechanism of shedding. Activation of the P2X7R requires high eATP concentrations, in the high micromolar or low millimolar range. Recent measurements of plasma eATP concentration in COVID-19 patients suggest that this nucleotide might be moderately elevated compared with healthy subjects, and that peripheral blood mononuclear cells release higher amounts upon stimulation (52, 53). Contrariwise, other investigators found lower eATP levels in COVID-19 patients, irrespective of disease severity (54). Even assuming that bulk plasma measurements provide an inaccurate estimate of the eATP concentration at the receptor level, as it is known that its concentration is higher in the pericellular space (55), estimated eATP levels in plasma are well below the threshold for P2X7R activation (56, 57). Several conditions are known to decrease the eATP threshold for P2X7R activation: low Ca²⁺ or Mg²⁺ concentration, alkaline pH, high extracellular K⁺, or co-stimulation with positive allosteric compounds (58–60). In the past, we and others have identified several such compounds active at the P2X7R (61–63). One of the most potent is the antimicrobial cathelicidin LL-37 (62) that is released by inflammatory cells following bacterial and virus infections and recently found increased in the plasma of COVID-19 patients (64). Furthermore, in COVID-19 patients hypomagnesemia is present and correlate to disease severity (65). These observations suggest that in COVID-19 patients several factors might contribute to lower the eATP threshold for P2X7R activation.

The dissociation between sP2X7R and sNLRP3 blood levels is very interesting because it suggests that although these molecules are closely functionally associated and even physically interacting (66), their mechanism of release might be different and dependent on separate stimuli. Lack of correlation with circulating IL-1 β suggests that sP2X7R and sNLRP3 shedding is only partially associated to caspase-1

activation and IL-1 β processing and release. This is also shown by the low increases of blood IL-1 β levels in most patients in this cohort and by the low IL-1 β increments in COVID-19 found by other authors (67).

In conclusion, our findings in COVID-19 patients show that increased blood levels of the sP2X7R very interestingly positively correlated with IL-10 and PCT, among the investigated inflammatory markers. Furthermore, increased sP2X7R levels at diagnosis were predictive of critical disease progression and unfavourable outcome.

Data availability statement

The raw data supporting the conclusions of this article will be made available by the authors, without undue reservation.

Ethics statement

The studies involving human participants were reviewed and approved by Ethical Committee of Ferrara District, University of Ferrara (Study 386/2020/Oss/UniFe). The patients/participants provided their written informed consent to participate in this study.

Author contributions

VVP and AA executed the experiments. SG, AV, SP, ALP, and ML collected the samples. JMS, VVP, and ALG analyzed the data. ALG, and FDV conceived the experiments. ALG, and FDV wrote the paper. VVP, JMS, and ALG prepared the figures. FDV, JMS and ALG provided the funding of the study. ALG, AnP, and FDV provided overall supervision of the study. All authors contributed to the article and approved the submitted version.

References

- Fu Y, Cheng Y, Wu Y. Understanding SARS-CoV-2-Mediated inflammatory responses: from mechanisms to potential therapeutic tools. *Viral Sin* (2020) 35(3):266–71. doi: 10.1007/s12250-020-00207-4
- Mehta P, McAuley DF, Brown M, Sanchez E, Tattersall RS, Manson JJ, et al. COVID-19: consider cytokine storm syndromes and immunosuppression. *Lancet* (2020) 395(10229):1033–4. doi: 10.1016/S0140-6736(20)30628-0
- Machhi J, Herskovitz J, Senan AM, Dutta D, Nath B, Oleynikov MD, et al. The natural history, pathobiology, and clinical manifestations of SARS-CoV-2 infections. *J Neuroimmune Pharmacol* (2020) 15(3):359–86. doi: 10.1007/s11481-020-09944-5
- Lai CC, Ko WC, Lee PI, Jean SS, Hsueh PR. Extra-respiratory manifestations of COVID-19. *Int J Antimicrob Agents* (2020) 56(2):106024. doi: 10.1016/j.ijantimicag.2020.106024
- Crayne CB, Albeituni S, Nichols KE, Cron RQ. The immunology of macrophage activation syndrome. *Front Immunol* (2019) 10:119. doi: 10.3389/fimmu.2019.00119
- McGonagle D, Sharif K, O'Regan A, Bridgewood C. The role of cytokines including interleukin-6 in COVID-19 induced pneumonia and macrophage activation syndrome-like disease. *Autoimmun Rev* (2020) 19(6):102537. doi: 10.1016/j.autrev.2020.102537
- Kim JS, Lee JY, Yang JW, Lee KH, Effenberger M, Szpirt W, et al. Immunopathogenesis and treatment of cytokine storm in COVID-19. *Theranostics* (2021) 11(1):316–29. doi: 10.7150/thno.49713
- Lu L, Zhang H, Dauphars DJ, He YW. A potential role of interleukin 10 in COVID-19 pathogenesis. *Trends Immunol* (2021) 42(1):3–5. doi: 10.1016/j.it.2020.10.012
- Vora SM, Lieberman J, Wu H. Inflammasome activation at the crux of severe COVID-19. *Nat Rev Immunol* (2021) 21(11):694–703. doi: 10.1038/s41577-021-00588-x
- Silva MJA, Ribeiro LR, Gouveia MIM, Marcelino BDR, Santos CSD, Lima KVB, et al. Hyperinflammatory response in COVID-19: a systematic review. *Viruses* (2023) 15(2):553. doi: 10.3390/v15020553
- Chang Y, Bai M, You Q. Associations between serum interleukins (IL-1beta, IL-2, IL-4, IL-6, IL-8, and IL-10) and disease severity of COVID-19: a systematic review and meta-analysis. *BioMed Res Int* (2022) 2022:2755246. doi: 10.1155/2022/2755246
- Naing A, Papadopoulos KP, Autio KA, Ott PA, Patel MR, Wong DJ, et al. Safety, antitumor activity, and immune activation of pegylated recombinant human interleukin-10 (AM0010) in patients with advanced solid tumors. *J Clin Oncol* (2016) 34(29):3562–9. doi: 10.1200/JCO.2016.68.1106
- Naing A, Infante JR, Papadopoulos KP, Chan IH, Shen C, Ratti NP, et al. PEGylated IL-10 (Pegilodecakin) induces systemic immune activation, CD8(+) T cell invigoration and polyclonal T cell expansion in cancer patients. *Cancer Cell* (2018) 34(5):775–91 e3. doi: 10.1016/j.ccell.2018.10.007
- Scialo F, Daniele A, Amato F, Pastore L, Matera MG, Cazzola M, et al. ACE2: the major cell entry receptor for SARS-CoV-2. *Lung* (2020) 198(6):867–77. doi: 10.1007/s00408-020-00408-4

Funding

This work was supported by FDV grants from the Italian Association for Cancer Research (n. IG 13025 and IG 18581), the Ministry of Education of Italy (PRIN n. 20178YTNCW), the European H2020 office through the COST Action CA21130 “P2X receptors as a therapeutic opportunity (PRESTO)”, and institutional funds from the University of Ferrara (FIR 2021 N. 195447 JMS, FAR 2021 ALG).

Acknowledgments

The authors would like to thank Dr. Simonetta Falzoni for her valuable cooperation.

Conflict of interest

Author FDV is a member of the Scientific Advisory Board of Biosceptre Ltd, a biotech Company involved in the development of anti-P2X7 antibodies, and a Consultant with Axxam SpA.

The remaining authors declare that the research was conducted in the absence of any commercial or financial relationships that could be construed as a potential conflict of interest.

Publisher's note

All claims expressed in this article are solely those of the authors and do not necessarily represent those of their affiliated organizations, or those of the publisher, the editors and the reviewers. Any product that may be evaluated in this article, or claim that may be made by its manufacturer, is not guaranteed or endorsed by the publisher.

15. Shirato K, Kizaki T. SARS-CoV-2 spike protein S1 subunit induces pro-inflammatory responses via toll-like receptor 4 signaling in murine and human macrophages. *Heliyon* (2021) 7(2):e06187. doi: 10.1016/j.heliyon.2021.e06187
16. Yue Y, Nabar NR, Shi CS, Kamenyeva O, Xiao X, Hwang IY, et al. SARS-coronavirus open reading frame-3a drives multimodal necrotic cell death. *Cell Death Dis* (2018) 9(9):904. doi: 10.1038/s41419-018-0917-y
17. Di Virgilio F, Sarti AC, Coutinho-Silva R. Purinergic signaling, DAMPs, and inflammation. *Am J Physiol Cell Physiol* (2020) 318(5):C832–C5. doi: 10.1152/ajpcell.00053.2020
18. Di Virgilio F, Dal Ben D, Sarti AC, Giuliani AL, Falzoni S. The P2X7 receptor in infection and inflammation. *Immunity* (2017) 47(1):15–31. doi: 10.1016/j.immuni.2017.06.020
19. Adinolfi E, Giuliani AL, De Marchi E, Pegoraro A, Orioli E, Di Virgilio F. The P2X7 receptor: a main player in inflammation. *Biochem Pharmacol* (2018) 151:234–44. doi: 10.1016/j.bcp.2017.12.021
20. Di Virgilio F. Liaisons dangereuses: P2X(7) and the inflammasome. *Trends Pharmacol Sci* (2007) 28(9):465–72. doi: 10.1016/j.tips.2007.07.002
21. Garlanda C, Dinarello CA, Mantovani A. The interleukin-1 family: back to the future. *Immunity* (2013) 39(6):1003–18. doi: 10.1016/j.immuni.2013.11.010
22. Giuliani AL, Sarti AC, Falzoni S, Di Virgilio F. The P2X7 receptor-Interleukin-1 liaison. *Front Pharmacol* (2017) 8:123. doi: 10.3389/fphar.2017.00123
23. Karki R, Sharma BR, Tuladhar S, Williams EP, Zalduondo L, Samir P, et al. Synergism of TNF-alpha and IFN-gamma triggers inflammatory cell death, tissue damage, and mortality in SARS-CoV-2 infection and cytokine shock syndromes. *Cell* (2021) 184(1):149–68.e17. doi: 10.1016/j.cell.2020.11.025
24. Kucia M, Ratajczak J, Bujko K, Adamiak M, Ciechanowicz A, Chumak V, et al. An evidence that SARS-Cov-2/COVID-19 spike protein (SP) damages hematopoietic stem/progenitor cells in the mechanism of pyroptosis in Nlrp3 inflammasome-dependent manner. *Leukemia* (2021) 35(10):3026–9. doi: 10.1038/s41375-021-01332-z
25. Riteau N, Gasse P, Fauconnier L, Gombault A, Couegnat M, Fick L, et al. Extracellular ATP is a danger signal activating P2X7 receptor in lung inflammation and fibrosis. *Am J Respir Crit Care Med* (2010) 182(6):774–83. doi: 10.1164/rccm.201003-0359OC
26. Moncao-Ribeiro LC, Faffe DS, Santana PT, Vieira FS, da Graca CL, Marques-da-Silva C, et al. P2X7 receptor modulates inflammatory and functional pulmonary changes induced by silica. *PLoS One* (2014) 9(10):e110185. doi: 10.1371/journal.pone.0110185
27. Pacheco PAF, Faria RX. The potential involvement of P2X7 receptor in COVID-19 pathogenesis: a new therapeutic target? *Scand J Immunol* (2021) 93(2):e12960. doi: 10.1111/sji.12960
28. Leao Batista Simoes J, Fornari Basso H, Cristine Kosvoski G, Gavioli J, Marafon F, Elias Assmann C, et al. Targeting purinergic receptors to suppress the cytokine storm induced by SARS-CoV-2 infection in pulmonary tissue. *Int Immunopharmacol* (2021) 100:108150. doi: 10.1016/j.intimp.2021.108150
29. Giuliani AL, Berchan M, Sanz JM, Passaro A, Pizzicotti S, Vultaggio-Poma V, et al. The P2X7 receptor is shed into circulation: correlation with c-reactive protein levels. *Front Immunol* (2019) 10:793. doi: 10.3389/fimmu.2019.00793
30. Conte G, Menendez-Mendez A, Bauer S, El-Naggar H, Alves M, Nicke A, et al. Circulating P2X7 receptor signaling components as diagnostic biomarkers for temporal lobe epilepsy. *Cells* (2021) 10(9):2444. doi: 10.3390/cells10092444
31. Garcia-Villalba J, Hurtado-Navarro L, Penin-Franch A, Molina-Lopez C, Martinez-Alarcon L, Angosto-Bazarra D, et al. Soluble P2X7 receptor is elevated in the plasma of COVID-19 patients and correlates with disease severity. *Front Immunol* (2022) 13:894470. doi: 10.3389/fimmu.2022.894470
32. Baroja-Mazo A, Martin-Sanchez F, Gomez AI, Martinez CM, Amores-Iniesta J, Compan V, et al. The NLRP3 inflammasome is released as a particulate danger signal that amplifies the inflammatory response. *Nat Immunol* (2014) 15(8):738–48. doi: 10.1038/ni.2919
33. Choe JY, Kim SK. Clinical significance of serum NLRP3 levels in patients with chronic gouty arthritis. *Joint Bone Spine* (2018) 85(2):257–8. doi: 10.1016/j.jbspin.2017.02.009
34. Peng Y, Liu B, Pei S, Zheng D, Wang Z, Ji T, et al. Higher CSF levels of NLRP3 inflammasome is associated with poor prognosis of anti-N-methyl-D-Aspartate receptor encephalitis. *Front Immunol* (2019) 10:905. doi: 10.3389/fimmu.2019.00905
35. Wang Y, Huang H, He W, Zhang S, Liu M, Wu S. Association between serum NLRP3 and malignant brain edema in patients with acute ischemic stroke. *BMC Neurol* (2021) 21(1):341. doi: 10.1186/s12883-021-02369-4
36. Huang W, Wang X, Xie F, Zhang H, Liu D. Serum NLRP3: a biomarker for identifying high-risk septic patients. *Cytokine* (2022) 149:155725. doi: 10.1016/j.cyto.2021.155725
37. Munoz FM, Patel PA, Gao X, Mei Y, Xia J, Gilels S, et al. Reactive oxygen species play a role in P2X7 receptor-mediated IL-6 production in spinal astrocytes. *Purinergic Signal* (2020) 16(1):97–107. doi: 10.1007/s11302-020-09691-5
38. Furini F, Giuliani AL, Parlati ME, Govoni M, Di Virgilio F, Bortoluzzi A. P2X7 receptor expression in patients with serositis related to systemic lupus erythematosus. *Front Pharmacol* (2019) 10:435. doi: 10.3389/fphar.2019.00435
39. Magni L, Bouazzi R, Heredero Olmedilla H, Petersen PSS, Tozzi M, Novak I. The P2X7 receptor stimulates IL-6 release from pancreatic stellate cells and tocilizumab prevents activation of STAT3 in pancreatic cancer cells. *Cells* (2021) 10(8):1928. doi: 10.3390/cells10081928
40. Lu W, Albalawi F, Beckel JM, Lim JC, Laties AM, Mitchell CH. The P2X7 receptor links mechanical strain to cytokine IL-6 up-regulation and release in neurons and astrocytes. *J Neurochem* (2017) 141(3):436–48. doi: 10.1111/jnc.13998
41. Shao X, Guha S, Lu W, Campagno KE, Beckel JM, Mills JA, et al. Polarized cytokine release triggered by P2X7 receptor from retinal pigmented epithelial cells dependent on calcium influx. *Cells* (2020) 9(12):2537. doi: 10.3390/cells9122537
42. Solini A, Chiozzi P, Morelli A, Fellin R, Di Virgilio F. Human primary fibroblasts in vitro express a purinergic P2X7 receptor coupled to ion fluxes, microvesicle formation and IL-6 release. *J Cell Sci* (1999) 112(Pt 3):297–305. doi: 10.1242/jcs.112.3.297
43. Soare AY, Durham ND, Gopal R, Tweel B, Hoffman KW, Brown JA, et al. P2X antagonists inhibit HIV-1 productive infection and inflammatory cytokines interleukin-10 (IL-10) and IL-1beta in a human tonsil explant model. *J Virol* (2019) 93(1):e01186–18. doi: 10.1128/JVI.01186-18
44. Han H, Ma Q, Li C, Liu R, Zhao L, Wang W, et al. Profiling serum cytokines in COVID-19 patients reveals IL-6 and IL-10 are disease severity predictors. *Emerg Microbes Infect* (2020) 9(1):1123–30. doi: 10.1080/22221751.2020.1770129
45. Gu SX, Tyagi T, Jain K, Gu VW, Lee SH, Hwa JM, et al. Thrombocytopeny and endotheliopathy: crucial contributors to COVID-19 thromboinflammation. *Nat Rev Cardiol* (2021) 18(3):194–209. doi: 10.1038/s41569-020-00469-1
46. Pelegrin P. P2X7 receptor and the NLRP3 inflammasome: partners in crime. *Biochem Pharmacol* (2021) 187:114385. doi: 10.1016/j.bcp.2020.114385
47. Ferrari D, Pizzirani C, Adinolfi E, Lemoli RM, Curti A, Idzko M, et al. The P2X7 receptor: a key player in IL-1 processing and release. *J Immunol* (2006) 176(7):3877–83. doi: 10.4049/jimmunol.176.7.3877
48. Tiutan T, Wallins JS, Brown S, Gonen M, Korenstein D. Prognostic value of procalcitonin in cancer patients with coronavirus disease 2019. *Clin Chem Lab Med* (2022) 61(2):339–48. doi: 10.1515/cclm-2022-0366
49. Fukui S, Ikeda K, Kobayashi M, Nishida K, Yamada K, Horie S, et al. Predictive prognostic biomarkers in patients with COVID-19 infection. *Mol Med Rep* (2023) 27(1):15. doi: 10.3892/mmr.2022.12902
50. Mazaheri T, Ranasinghe R, Al-Hasani W, Luxton J, Kearney J, Manning A, et al. A cytokine panel and procalcitonin in COVID-19, a comparison between intensive care and non-intensive care patients. *PLoS One* (2022) 17(5):e0266652. doi: 10.1371/journal.pone.0266652
51. Sluyter R. The P2X7 receptor. *Adv Exp Med Biol* (2017) 1051:17–53. doi: 10.1007/5584_2017_59
52. da Silva GB, Manica D, da Silva AP, Kosvoski GC, Hanauer M, Assmann CE, et al. High levels of extracellular ATP lead to different inflammatory responses in COVID-19 patients according to the severity. *J Mol Med (Berl)* (2022) 100(4):645–63. doi: 10.1007/s00109-022-02185-4
53. Russo C, Raiden S, Algieri S, De Carli N, Davenport C, Sarli M, et al. Extracellular ATP and imbalance of CD4+ T cell compartment in pediatric COVID-19. *Front Cell Infect Microbiol* (2022) 12:893044. doi: 10.3389/fcimb.2022.893044
54. Dorneles GP, Teixeira PC, da Silva IM, Schipper LL, Santana Filho PC, Rodrigues Junior LC, et al. Alterations in CD39/CD73 axis of T cells associated with COVID-19 severity. *J Cell Physiol* (2022) 237(8):3394–407. doi: 10.1002/jcp.30805
55. Di Virgilio F, Pinton P, Falzoni S. Assessing extracellular ATP as danger signal *In vivo*: the pmeluc system. *Methods Mol Biol* (2016) 1417:115–29. doi: 10.1007/978-1-4939-3566-6_7
56. Forrester T. Release of adenosine triphosphate from active skeletal muscle. *J Physiol* (1966) 186(2):107P–9P.
57. Proietti M, Perruzza L, Scribano D, Pellegrini G, D'Antuono R, Strati F, et al. ATP released by intestinal bacteria limits the generation of protective IgA against enteropathogens. *Nat Commun* (2019) 10(1):250. doi: 10.1038/s41467-018-08156-z
58. Di Virgilio F, Jiang LH, Roger S, Falzoni S, Sarti AC, Vultaggio-Poma V, et al. Structure, function and techniques of investigation of the P2X7 receptor (P2X7R) in mammalian cells. *Methods Enzymol* (2019) 629:115–50. doi: 10.1016/bs.mie.2019.07.043
59. Di Virgilio F, Giuliani AL, Vultaggio-Poma V, Falzoni S, Sarti AC. Non-nucleotide agonists triggering P2X7 receptor activation and pore formation. *Front Pharmacol* (2018) 9:39. doi: 10.3389/fphar.2018.00039
60. Stokes L, Bidula S, Bibic L, Allum E. To inhibit or enhance? is there a benefit to positive allosteric modulation of P2X receptors? *Front Pharmacol* (2020) 11:627. doi: 10.3389/fphar.2020.00627
61. Ferrari D, Pizzirani C, Adinolfi E, Forchap S, Sitta B, Turchet L, et al. The antibiotic polymyxin b modulates P2X7 receptor function. *J Immunol* (2004) 173(7):4652–60. doi: 10.4049/jimmunol.173.7.4652
62. Tomasinsig L, Pizzirani C, Skerlavaj B, Pellegatti P, Gulinelli S, Tossi A, et al. The human cathelicidin LL-37 modulates the activities of the P2X7 receptor in a structure-dependent manner. *J Biol Chem* (2008) 283(45):30471–81. doi: 10.1074/jbc.M802185200
63. Helliwell RM, ShioukHuey CO, Dhuna K, Molero JC, Ye JM, Xue CC, et al. Selected ginsenosides of the protopanaxdiol series are novel positive allosteric modulators of P2X7 receptors. *Br J Pharmacol* (2015) 172(13):3326–40. doi: 10.1111/bph.13123

64. Duan Z, Zhang J, Chen X, Liu M, Zhao H, Jin L, et al. Role of LL-37 in thrombotic complications in patients with COVID-19. *Cell Mol Life Sci* (2022) 79 (6):309. doi: 10.1007/s00018-022-04309-y
65. Zhu L, Bao X, Bi J, Lin Y, Shan C, Fan X, et al. Serum magnesium in patients with severe acute respiratory syndrome coronavirus 2 from wuhan, China. *Magnes Res* (2021) 34(3):103–13. doi: 10.1684/mzh.2021.0488
66. Franceschini A, Capece M, Chiozzi P, Falzoni S, Sanz JM, Sarti AC, et al. The P2X7 receptor directly interacts with the NLRP3 inflammasome scaffold protein. *FASEB J* (2015) 29(6):2450–61. doi: 10.1096/fj.14-268714
67. Bergantini L, d'Alessandro M, Cameli P, Otranto A, Luzzi S, Bianchi F, et al. Cytokine profiles in the detection of severe lung involvement in hospitalized patients with COVID-19: the IL-8/IL-32 axis. *Cytokine* (2022) 151:155804. doi: 10.1016/j.cyto.2022.155804