



OPEN ACCESS

EDITED BY

Augusto Leone,
Städtisches Klinikum Karlsruhe, Germany

REVIEWED BY

Francesco P. Cammarata,
National Research Council (CNR), Italy
Chen Yang,
Fudan University, China
Chenlong Yang,
Peking University Health Science Center,
China

*CORRESPONDENCE

Abdallah Badou

✉ abdallah.badou@univh2c.ma

[†]These authors have contributed equally to this work

RECEIVED 06 January 2023

ACCEPTED 06 July 2023

PUBLISHED 28 July 2023

CITATION

Miftah H, Naji O, Ssi SA, Ghouzlani A, Lakhdar A and Badou A (2023) NR2F6, a new immune checkpoint that acts as a potential biomarker of immunosuppression and contributes to poor clinical outcome in human glioma. *Front. Immunol.* 14:1139268. doi: 10.3389/fimmu.2023.1139268

COPYRIGHT

© 2023 Miftah, Naji, Ssi, Ghouzlani, Lakhdar and Badou. This is an open-access article distributed under the terms of the [Creative Commons Attribution License \(CC BY\)](https://creativecommons.org/licenses/by/4.0/). The use, distribution or reproduction in other forums is permitted, provided the original author(s) and the copyright owner(s) are credited and that the original publication in this journal is cited, in accordance with accepted academic practice. No use, distribution or reproduction is permitted which does not comply with these terms.

NR2F6, a new immune checkpoint that acts as a potential biomarker of immunosuppression and contributes to poor clinical outcome in human glioma

Hayat Miftah¹, Oumayma Naji¹, Saadia Ait Ssi^{1†}, Amina Ghouzlani^{1†}, Abdelhakim Lakhdar^{2,3} and Abdallah Badou^{1,4,5*}

¹Immuno-Genetics and Human Pathology Laboratory, Faculty of Medicine and Pharmacy, Hassan II University, Casablanca, Morocco, ²Department of Neurosurgery, University Hospital Center (UHC) Ibn Rochd, Casablanca, Morocco, ³Laboratory of Research on Neurologic, Neurosensorial Diseases and Handicap, Faculty of Medicine and Pharmacy, Hassan II University, Casablanca, Morocco, ⁴Mohammed VI Center for Research and Innovation, Rabat, Morocco, ⁵Mohammed VI University of Sciences and Health, Casablanca, Morocco

Introduction: Nuclear receptor subfamily 2 group F member 6 (NR2F6) is a promising checkpoint target for cancer immunotherapy. However, there has been no investigation of NR2F6 in glioma. Our study systematically explored the clinical characteristics and biological functions of NR2F6 in gliomas.

Methods: We extracted RNA sequencing (RNA-seq) data of 663 glioma samples from The Cancer Genome Atlas (TCGA) as the training cohort and 325 samples from the Chinese Glioma Genome Atlas (CGGA) as the validation cohort. We also confirmed the NR2F6 gene expression feature in our own cohort of 60 glioma patients. R language and GraphPad Prism softwares were mainly used for statistical analysis and graphical work.

Results: We found that NR2F6 was significantly related to high tumor aggressiveness and poor outcomes for glioma patients. Functional enrichment analysis demonstrated that NR2F6 was associated with many biological processes that are related to glioma progression, such as angiogenesis, and with multiple immune-related functions. Moreover, NR2F6 was found to be significantly correlated with stromal and immune infiltration in gliomas. Subsequent analysis based on Gliomas single-cell sequencing datasets showed that NR2F6 was expressed in immune cells, tumor cells, and stromal cells. Mechanistically, results suggested that NR2F6 might act as a potential immunosuppression-mediated molecule in the glioma microenvironment through multiple ways, such as the recruitment of immunosuppressive cells, secretion of immunosuppressive cytokines, M2 polarization of macrophages, in addition to combining with other immune checkpoint inhibitors.

Conclusion: Our findings indicated that intracellular targeting of NR2F6 in both immune cells and tumor cells, as well as stromal cells, may represent a promising immunotherapeutic strategy for glioma. Stromal cells, may represent a promising immunotherapeutic strategy for glioma.

KEYWORDS

NR2F6, glioma, immunotherapy, glioma progression, immune and stromal infiltration, immunosuppression, clinical outcome

Introduction

Glioma is the most aggressive and lethal type of the central nervous system that originates from neuroglial stem or progenitor cells, with glioblastoma (GBM) being the worst malignant subtype (1). According to the world health organization (WHO), glioma is categorized into oligodendroglioma, astrocytoma, glioblastoma, and mixed gliomas (2); and classified into low grade glioma (I and II) and high grade glioma (III and IV) (3). Despite multimodal treatment approaches consisting of maximal surgical resection, followed by external radiotherapy with concomitant and adjuvant Temozolomide, there has been relatively little improvement, with a median overall survival (OS) of less than 15 months, 7 to 8 months of median progression-free survival (PFS), and a 5-year rate of only 6.8% (4–8). This is profoundly associated with heterogeneous tumors, with different regions of the tumor exhibiting distinct cellular and molecular features which facilitate immune evasion (9, 10). Moreover, high level of immunosuppressive cell infiltration (e.g., regulatory T cell (Treg), tumor-associated microglia, tumor-associated macrophages, and myeloid-derived suppressor cells) and a high prevalence of exhausted T cells represent a significant barrier to immunotherapies in GBM (11–16). Although, different immunotherapeutic modalities have been combined with conventional therapies to enhance the clinical outcomes of GBM patients, including oncolytic virus, checkpoint inhibitors, vaccines, T-cell therapy, adoptive T-cell transfer, and chimeric antigen receptor (CAR) (17), currently, a small percentage of patients experience more durable responses and are still alive two years following diagnosis, and in fewer cases, they survive even longer (7, 18, 19). Moreover, immunotherapy is assumed to elicit an anti-tumor response, PD-1 and CTLA-4 inhibition have shown

significant effectiveness in treating several solid cancers, such as melanoma and lung cancer (20–22). However, GBM patients are refractory to current immunotherapies assessing nivolumab, an anti-programmed cell death protein 1 (anti-PD-1) therapy, alone or in combination with radiotherapy and temozolomide (6, 23). According to recent reports, immunotherapy failure may be related to upregulation of various immune checkpoints in glioma patients after blocking the PD1/PDL-1 pathway (24), indicating the importance of deciphering novel biomarkers for an additive or synergistic impact on glioblastoma patients to guide and improve immune-mediated therapy concepts (25, 26).

Recently, NR2F6 has attracted particular interest as a potential novel immune checkpoint receptor target (27). NR2F6 acts as a transcriptional repressor in different cell subsets, such as Th0, Th17, CD4 T cells, and CD8 T cells, by antagonizing the DNA accessibility of NFAT and AP-1 transcription factors through direct binding to multiple regions within key cytokine promoter loci such as IL-2, IFN γ , and TNF α (28). Different research has provided an overview regarding the proper contribution of NR2F6 in the immune response. Overall, NR2F6 plays a crucial role in cellular homeostasis and various diseases, including cancer (29–32). NR2F6 has been reported to be ubiquitously weakly expressed in resting T cells and highly expressed in effector T cells, where it triggers an anti-inflammatory response (27). Moreover, NR2F6 is overexpressed in a variety of malignancies, including lymphoma, head and neck squamous cell carcinoma, acute myeloid leukemia (AML), colon cancer, and breast cancer (33–37). Consequently, the researchers found that NR2F6 expression appears to be associated with quicker tumor progression and worse overall patient survival (27, 38). Furthermore, evaluating tumor-infiltrating lymphocytes from non-small cell lung cancer (NSCLC) patients' biopsies provides substantial preclinical evidence that NR2F6 overexpression at the tumor niche produces effector T cells unable to mount a robust immune response against malignancy (39). Interestingly, genetic knockout of NR2F6 significantly improves responses to PD-1/PDL-1 cancer immune checkpoint inhibition (39).

As a promising intra-cellular immune checkpoint inhibitory, NR2F6 might be a good target for immunotherapy besides those present on the cell surface. Nevertheless, a rigorous assessment of NR2F6 involvement in glioma patients has yet to be handled. Therefore, we set out to explore NR2F6 mRNA profiling in glioma through 1048 samples. The RNA-sequencing dataset from

Abbreviations: NR2F6, Nuclear receptor subfamily 2 group F member; TCGA, The Cancer Genome Atlas; CGGA, Chinese Glioma Genome Atlas; OS, overall survival; LGG, Low-Grade Glioma; HGG, High Grade Glioma; WHO, World Health Organization; TIICs, Tumor-Infiltrating Immune Cells; MSC, Mesenchymal Stromal Cells; CD8+ Tcm, CD8+ T Central Memory; CD8+ Tem, CD8+ T Effector Memory; NKT, Natural killer T cell; Tgd cells, Gamma delta T cells; Tregs, regulatory T cells; DC, Dendritic cells; aDC, Activated dendritic cells; cDC, Conventional dendritic cells; iDC, Immature dendritic cells; pDC, Plasmacytoid dendritic cells; TISCH, Tumor Immune Single-Cell Hub; DEGs, Differentially Expressed Genes; GO, Gene Ontology; TME, Tumor Micro-Environment; TAMs, Tumor-Associated Macrophages

the Cancer Genome Atlas (TCGA) was used as a training cohort, and our results were validated in an independent cohort using the Chinese Glioma Genome Atlas (CGGA) dataset and the Moroccan glioma patient cohort. The present study is the first to clinically, molecularly, and immunologically characterize NR2F6 expression in gliomas.

Materials and methods

Clinical samples

A total of 60 tumor samples from glioma patients were collected from the Ibn Rochd University Hospital, neurosurgery department from May 2016 to April 2022 (30 specimens of high-grade glioma: 22 glioblastomas, 3 astrocytomas grade III, and 5 ependymomas grade III and 30 specimens of low-grade glioma: 19 astrocytomas grade I, 2 astrocytomas grade II, 3 oligoastrocytomas grade II, 5 ependymomas grade II, and 1 xanthoastrocytoma grade II) (Table Supplementary 2). All patients underwent surgery, and fresh tumor tissue was obtained during surgery. Moreover, none of them received any chemotherapy or radiotherapy before tumor resection. Signed informed consent forms were obtained from all subjects. The Ethical Board of the Ibn Rochd University Hospital of Casablanca approved this study.

Public data acquisition and preprocessing

From the TCGA dataset, RNA sequencing expression data and the clinicopathological characteristics from 663 glioma samples (glioblastoma (GBM) 150 cases, low-grade glioma (LGG) 513 cases) (Table Supplementary 1), were analyzed in our study (<http://cancergenome.nih.gov>). In order to corroborate the findings that we have revealed in the TCGA dataset, 325 glioma samples from the CGGA dataset were used as a validation cohort (Table Supplementary 1). CGGA transcriptome sequencing data were generated using the Illumina HiSeq platform, which is publicly available (<http://www.cgga.org.cn/>). The Limma package (40) of R software was utilized for the normalization of RNA expression profiles and the batch effect between TCGA-LGG samples and TCGA-GBM samples was corrected using the SVA package (41).

We established the following criteria for patients screening: WHO Grade II-III-IV, IDH mutation status, sex, age, histopathological type, survival status and overall survival data. As long as the six types of data mentioned above were available, we would include these subjects in this study, and there are no additional exclusion criteria.

RNA extraction and cDNA synthesis

Total RNA from 60 fresh biopsies was isolated using Trizol reagent (Invitrogen, France) (42, 43). We analyzed RNA concentration and purity with the use of a NanoVue™ Plus Spectrophotometer (GE Healthcare, UK). The samples were then

diluted with ultrapure water to ensure that each tube had the same concentration of RNA. According to the manufacturer's instructions, cDNA was synthesized from 1 µg of RNA included in a 20 µl reaction mixture containing RNase-Free Water Random Hexamer Primer (Bioline, France) and incubated at 70°C for 5 min. Afterward, 1 µL RNase-free water, 4 µL Tetro reverse transcriptase buffer, 0.5 µL RNase inhibitor (Invitrogen, France), 4 µL dNTP (10 mM), and 0.5 µL Tetro reverse transcriptase enzyme (Bioline, France) were added, followed by incubation at 25°C for 10 min, then at 45°C for 30 min, and finally at 85°C for 5 min.

Real-time quantitative PCR

The expression levels of NR2F6 and β -Actin were assayed using fluorescence-based quantitative real-time PCR (RT-qPCR) (SYBR Green PCR Master Mix; (Thermo Fischer)). A reagent mixture of 18 µL (7 µL ultra-pure water, 0.5 µL of each primer sequence (forward and reverse), and 10 µL SYBR Green) besides 2 µL of cDNA were added to each well of the PCR plate. Instead of cDNA, 2 µL of ultra-pure water were used in the negative control well. The genes were amplified under the following conditions: hold stage at 95°C for 10 min, followed by 40 cycles of denaturation at 95°C for 15 s, and annealing and extension at 60°C for 1 min. The relative expression level was calculated using the $2^{(-\Delta CT)}$ method described by Livak and Schmittgen (44) and the house-keeping gene β -Actin was used as an internal reference. At the end of the assay, a melting curve and electrophoresis were constructed to verify the specificity of the reaction.

The primers used for qPCR were as follows: β -actin, forward: 5'-GAGATGGCCACGGCTGCTT-3' and reverse: 5'-GCCACAGGACTCCATGCCCA-3', product length was 446 bp, instead of β -actin, forward: 5'-TGGAATCCTGTGGCATCCATGAAAC-3' and reverse: 5'-TAAACGCAGCTCAGTAACAGTCCG-3', product length was 144 bp.

CIBERSORT

CIBERSORT is a deconvolution algorithm that characterizes the cell composition of complex tissue from their gene expression profiles (9, 45). This method enables the quantification of a specific cell type abundance and has been verified by fluorescence-activated cell sorting (FACS) (46). We used CIBERSORT (<https://cibersortx.stanford.edu/>) to assess the relative fractions of 22 tumor-infiltrating immune cell types in high and low NR2F6 expression groups, with the algorithm run using the LM22 signature matrix at 1000 permutations. These TIICs included 7 T-cell types (Tregs, naïve CD4+ T cells, CD8+ T cells, resting memory CD4+ T cells, T follicular helper (Tfh) cells, $\gamma\delta$ T cells, activated memory CD4+ T cells), activated NK cells, resting natural killer (NK) cells, macrophages (M1 macrophages, M2 macrophages, M0 macrophages), monocytes, resting mast cells, resting dendritic cells (DC), activated DC, activated mast cells, memory B cells, naïve B cells, eosinophils, plasma cells, and neutrophils. The sum of all evaluated immune cell-type fractions equals 1 for each sample.

xCell

xCell, reported by Aran (47), a method based on ssGSEA (single sample gene set enrichment analysis) that estimates the abundance scores of 64 cell types, was used to evaluate the proportion of the 12 types of stromal cell: Adipocytes, Endothelial cells, Chondrocytes, Fibroblasts, MSC, Osteoblast, Pericytes, Preadipocytes, Skeletal muscle, Smooth muscle, ly Endothelial cells, mv Endothelial cells and 34 types of immune cell: B-cells, CD4+ T-cells, CD4+ Tcm, CD4+ memory T-cells, CD4+ naive T-cells, CD8+ T-cells, CD8+ Tcm, CD8+ Tem, CD8+ naive T-cells, Class-switched memory B-cells, Memory B-cells, NK cells, NKT, Plasma cells, Tgd cells, Tregs, Th1 cells, Th2 cells, naive B-cells, pro B-cells, Basophils, Dendritic cells, Eosinophils, Macrophages, Macrophages M1, Macrophages M2, Mast cells, Monocytes, Neutrophils, Activated dendritic cells, Conventional dendritic cells, Immature dendritic cells, Plasmacytoid dendritic cells.

Single-cell level analysis

We obtained GBM single-cell sequencing data (GSE102130, GSE103224, GSE135437, GSE138794, GSE141383, GSE141982, GSE148842, GSE162631, GSE163108, GSE70630, GSE139448, GSE131928) Based on the Tumor Immune Single-Cell Hub (TISCH) online database (<http://tisch.comp-genomics.org/>) (48, 49), which was used to classify stromal cells, immune cells, and malignant cells by hierarchical clustering. Then, NR2F6 expression in these cells was evaluated, and the results were illustrated by heatmaps.

Identification of differentially expressed genes

The differentially expressed genes between low-NR2F6 and high-NR2F6 were performed using limma package with the voom function (40). We removed genes with low expression levels to correct the batch effect. We used the calcNormFactors function to calculate the normalization factor for each patient and the voom function to perform CPM normalization, adjusted by the TMM method. Quantile normalization was used to normalize RNA-seq data. The results are presented as a table of genes ordered by significance (Table Supplementary 3, 4), and a $|\log \text{fold change (FC)}| > 0.4$ and adj. P value < 0.05 were further conducted as the cutoff criteria for the DEGs screening. The GO enrichment analysis of DEGs was shown by heatmap using the visual hierarchical cluster analysis by the web-based Morpheus software (<https://software.broadinstitute.org/morpheus/>). VennDiagram package in R software was used to identify overlapping DEGs between TCGA and CGGA.

Gene functional and pathway enrichment analysis

The biological functions and signaling pathways related to NR2F6 were explored by Gene ontology (GO) and Kyoto

Encyclopedia of Genes and Genomes (KEGG) analyses using the Database for Annotation, Visualization, and Integrated Discovery (DAVID) (<https://david.ncicrf.gov>) (50–52). Terms with p-value < 0.05 was considered significantly enriched.

Statistical analysis

The statistical software R (version 4.0.3) and GraphPad Prism 8 software (version 8.0.2) were used for the statistical analysis and generation of figures. The median value of NR2F6 expression was considered as the cutoff value to separate patients into the high and low groups. Survival analysis was conducted using Kaplan-Meier analysis and the log-rank test. The Wilcoxon Signed Rank test, Mann-Whitney and unpaired t-test were used for statistical analysis between two groups, while the Kruskal-Wallis test was applied to statistical analysis between more than two groups. Non-parametric Spearman test was conducted to evaluate the correlation of two variables. All statistical tests were independently performed by two different scientists, and a p-value less than 0.05 was considered statistically significant.

Results

High NR2F6 expression was related to higher tumor malignancy in glioma

To explore the expression pattern of NR2F6 in glioma, we first assessed NR2F6 expression in 663 RNA sequencing samples from the TCGA database, according to glioma grades. The NR2F6 expression level increased with increasing tumor grade (Figure 1A). The higher expression of NR2F6 was significantly observed in high-grade versus low-grade glioma tissues (Figure 1B). We also validated our findings in CGGA database (Figures 1D, E), as well as in the in-house cohort (Figures 1G, H). IDH mutation status is a well-established clinically relevant molecular biomarker of glioma (53). Therefore, we analyzed the NR2F6 expression pattern based on IDH mutation status. NR2F6 expression was significantly up-regulated in IDH-wildtype gliomas than IDH-mutated gliomas in TCGA as well as CGGA and in-house cohort (Figures 1C, F, I). Taken together, these results indicated that NR2F6 expression was more prevalent in aggressive glioma. The correlation between NR2F6 expression and clinicopathological characteristics of patients with gliomas in the TCGA, CGGA, and in-house cohorts is presented in Supplementary Tables 1, 2, respectively.

NR2F6 expression was relevant to worse survival in glioma

As we discussed above, higher expression of NR2F6 was observed in higher grades of glioma, highlighting the possible relationship between NR2F6 expression and a poorer prognosis. Thus, we divided glioma patients into low and high-expression

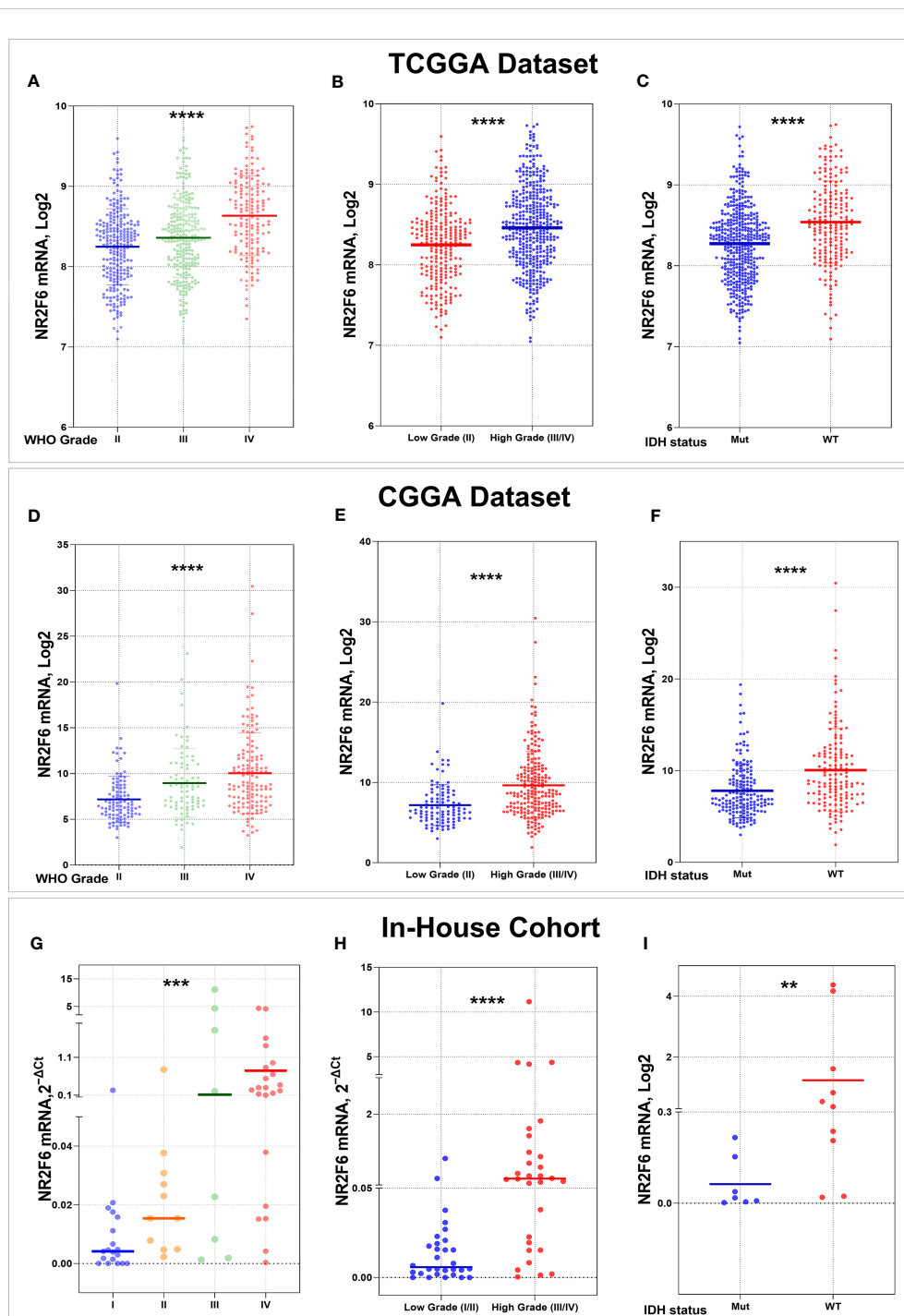


FIGURE 1

Association of NR2F6 expression with clinical glioma parameters in TCGA, CGGA databases, and in in-house cohort. NR2F6 expression level significantly increases with increasing tumor grade in gliomas (A, D, G). The NR2F6 gene is strongly expressed in high grade compared with low grade glioma tissues (B, E, H). NR2F6 expression is significantly enriched in IDH wild-type glioma (WT) compared with IDH mutant (Mut) (C, F, I). In all statistical analyses, p values less than 0.05 were considered statistically significant, ** $p < 0.01$; *** $p < 0.001$; **** $p < 0.0001$.

groups to evaluate NR2F6's prognostic value. The Kaplan–Meier curves of the overall survival (OS) of patients with gliomas are illustrated in Figure 2. As shown, patients with glioma with lower NR2F6 expression exhibited significantly longer OS compared with patients with higher NR2F6 expression in both TCGA and CGGA cohorts (Figures 2A, B). These results indicated that high expression of NR2F6 conferred worse outcomes in glioma patients.

Differential gene enrichment analysis between NR2F6 groups

Since NR2F6 expression in glioma was strongly associated with malignancy, we inferred that NR2F6 may have important biologic functions in glioma. The GO functional analysis with DAVID was used to determine the biological role of NR2F6 in gliomas. First, we

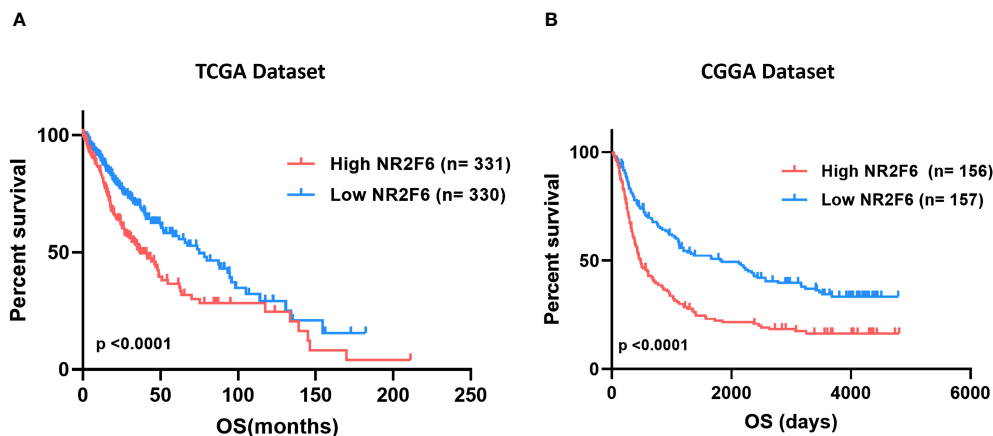


FIGURE 2

Survival analysis of glioma patients based on NR2F6 expression. Kaplan–Meier analysis indicated that high expression of NR2F6 was related to significantly worse prognosis in glioma patients, in TCGA (A) and CGGA (B) cohorts. Patients were divided into two groups based on the median value of NR2F6 expression. The red curve represents patients with high expression of NR2F6, and the blue curve represents patients with low expression of NR2F6.

performed a differential gene analysis between low- and high-NR2F6 expression samples. According to adjusted $P < 0.05$ and $|\log_2\text{FoldChange}| \geq 0.4$, 2159 genes were identified as DEGs in TCGA, of which 1127 were downregulated and 1032 were upregulated (Supplementary Table 3), and CGGA contained 772 DEGs, including 397 downregulated genes and 375 upregulated genes (Supplementary Table 4). GO Enrichment analysis of differential genes showed upregulation of many biological processes related to glioma progression such as extracellular matrix organization, collagen fibril organization, and angiogenesis. Of note, upregulated genes were also involved in several immune processes, such as leukocyte migration, cytokine-mediated signaling pathway, and inflammatory response. GO terms related to biological processes that are normal and indispensable, such as neuron projection development

and nervous system development were downregulated. All the results mentioned above were shared by the two datasets (Figures 3A, B). In line with previous studies (27), these results indicate that NR2F6 might have dual pro-tumor activity in tumor cells and immune cells in the glioma microenvironment.

NR2F6-related immune signatures in glioma

To further identify the NR2F6-associated immune signature in glioma, we downloaded gene sets of the immune system from AmiGO 2 web portal (<http://amigo.geneontology.org/amigo>). We identified 226 overlapping upregulated DEGs in TCGA and CGGA

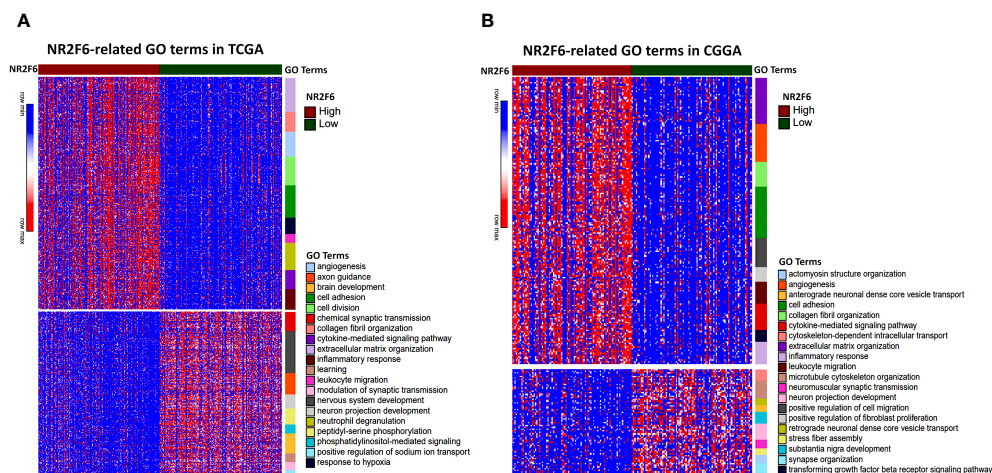


FIGURE 3

Biological function analysis for NR2F6 in glioma. NR2F6-related gene ontology (GO) terms in TCGA (A) and CGGA datasets (B). Red to blue represents high to low DEG expression. The samples were ranked according to NR2F6 expression, from high (red color) to low (green color). The color bars at the right side of the heatmap represent the enriched gene ontology terms of upregulated and downregulated DEGs. DEGs, differentially expressed genes.

datasets, which were ranked according to adjusted $P < 0.01$ (Figure 4A). GO and KEGG enrichment analyses were used to clarify the biofunctions of these genes. The results showed that overlapping genes were highly enriched in innate immune response, T cell receptor signaling pathway, I-kappaB Kinase/NF-kappaB signaling, and response to cytokines in GO terms (Figure 4B). The KEGG pathway analysis suggested that NR2F6 may be involved in TNF signaling pathway, leukocyte transendothelial migration, Toll-like receptor signaling pathway, NOD-like receptor signaling pathway, and other immune-related pathways (Figure 4C). These findings suggest that NR2F6 may be associated with both innate and adaptive immune responses.

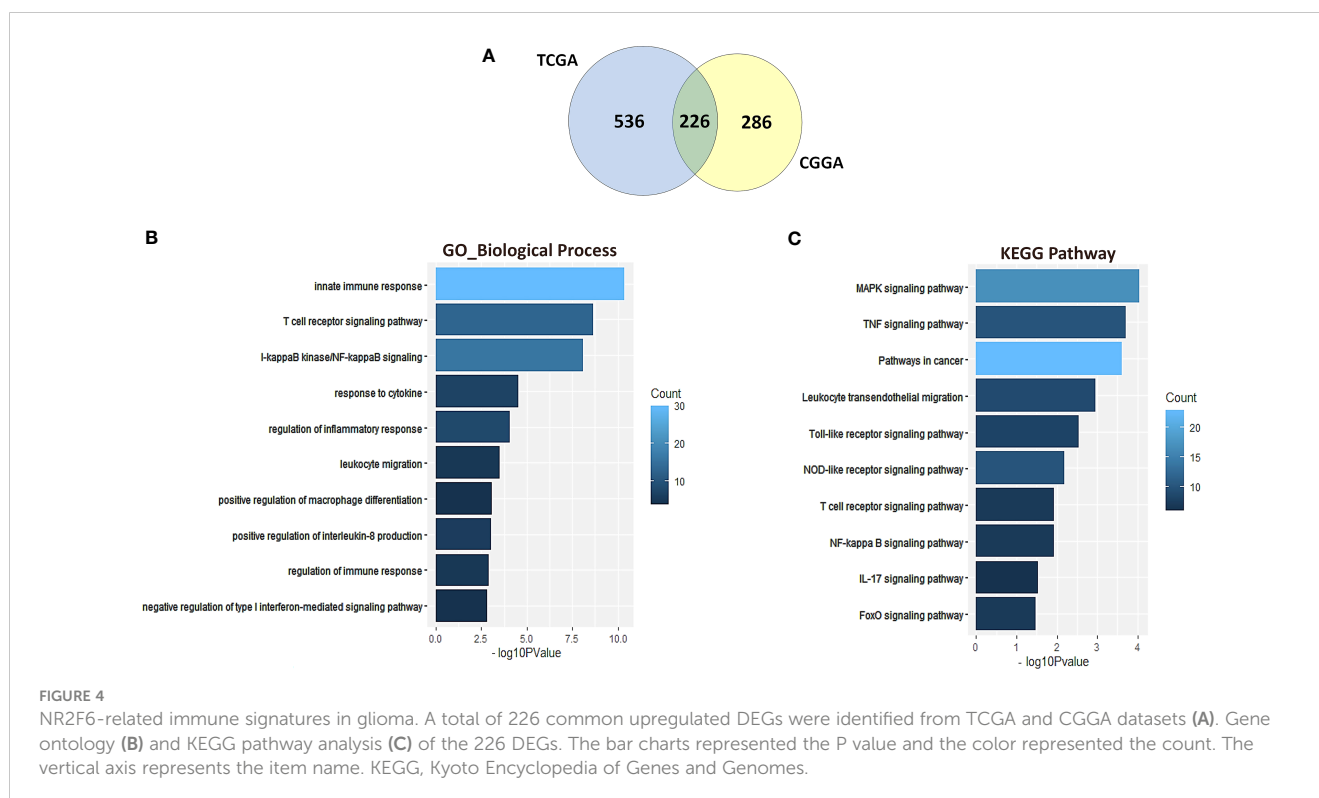
NR2F6 was associated with infiltrating immune and stromal cells in glioma microenvironment

To get a better understanding of the relationship between NR2F6 and the infiltrated cells, we analyzed the proportion of 22 immune cells between high and low NR2F6 expression groups in both TCGA and CGGA datasets using CIBERSORT software (45). We compared the analytical results of TCGA (Figure 5A) and CGGA (Supplementary Figure S1A), where we found a similar statistically significant difference in the distribution of T cells follicular helper, monocytes, NK cells resting, NK cells activated, M0 macrophages, M2 macrophages, and Mast cells activated. The increase in NR2F6 expression was associated with an increase in the proportion of T cells follicular helper, NK cells resting, M0 macrophages and M2 macrophages, and a decrease in the proportion of monocytes, NK cells activated and Mast cells

activated. This suggests that NR2F6 has a remarkable influence on the infiltration level of immune cells. To further determine these findings, we next employed xCell (47) to analyze the correlation between NR2F6 expression and 46 immune and stromal cell populations. As shown in Figure 5B and Supplementary Figure S1B, in both TCGA and CGGA datasets, NR2F6 expression was significantly associated with immune score, stroma score, and microenvironment score. NR2F6 was remarkably positively correlated with the majority of stromal cells, as well as Treg, macrophages, M2 macrophage phenotype, and neutrophils, whereas B cells, eosinophils, plasma cells, Th1, Th2, CD8⁺ T cells, and CD8⁺ Tcm were negatively correlated with NR2F6 expression. These results strongly suggested that NR2F6 has an important influence on the infiltration of immune and stromal cells in the glioma microenvironment. The TME plays a pivotal role in tumor occurrence and development, which may accelerate tumor deterioration and affect the prognosis. We further used the TISCH database to analyze NR2F6 expression in TME-related cells. We found that NR2F6 was expressed in immune cells, malignant cells, and stromal cells. NR2F6 expression was the highest in malignant cells and stromal cells in the microenvironment of gliomas (Figure 6). These findings demonstrated that NR2F6 was closely related to TME in glioma.

NR2F6 was associated with immunosuppressive properties

Immunosuppressive cells promote immune evasion by producing immunosuppressive cytokines in the tumor microenvironment, resulting in dysfunctional T cells. Our analysis of the tumor-



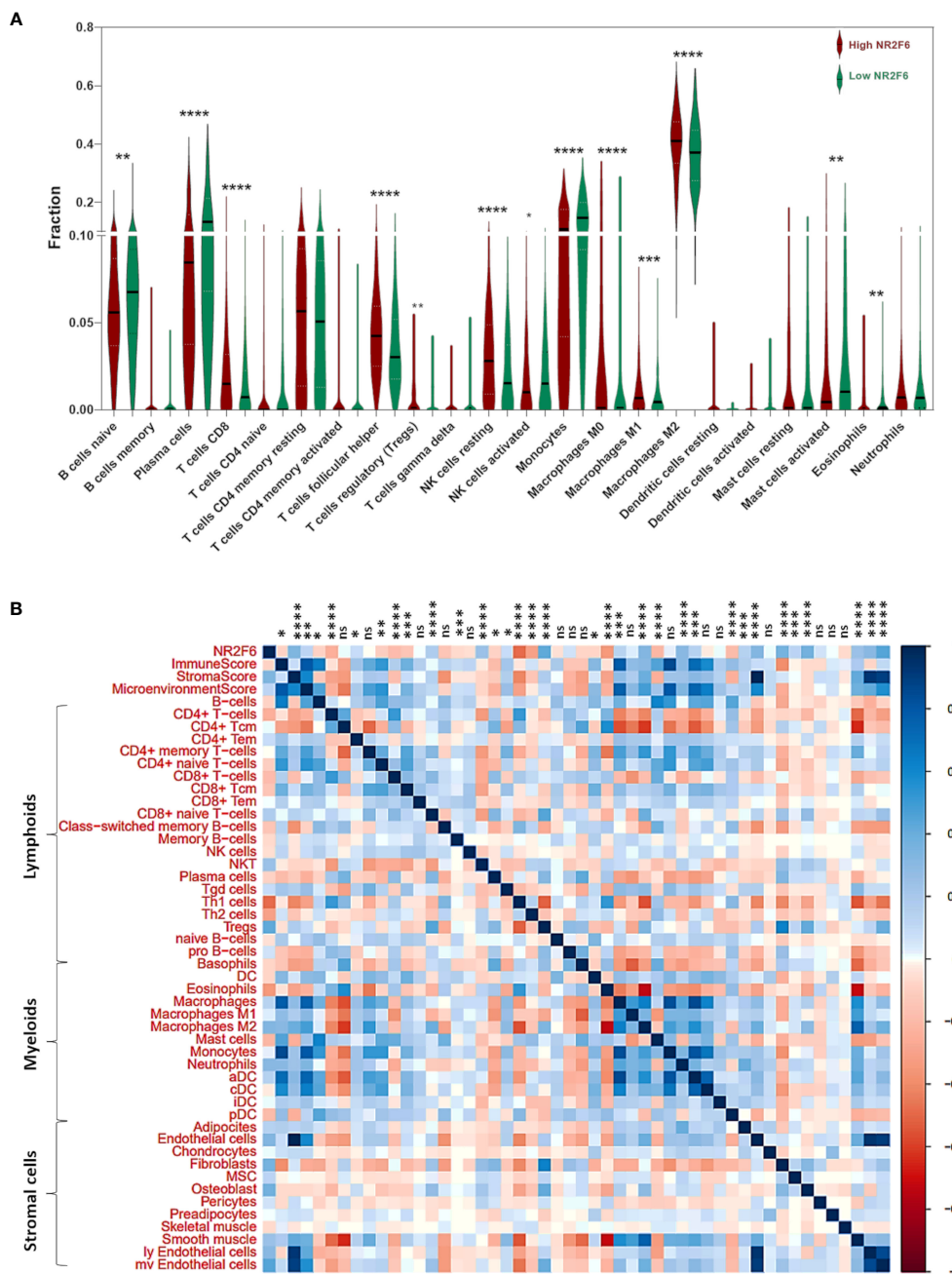
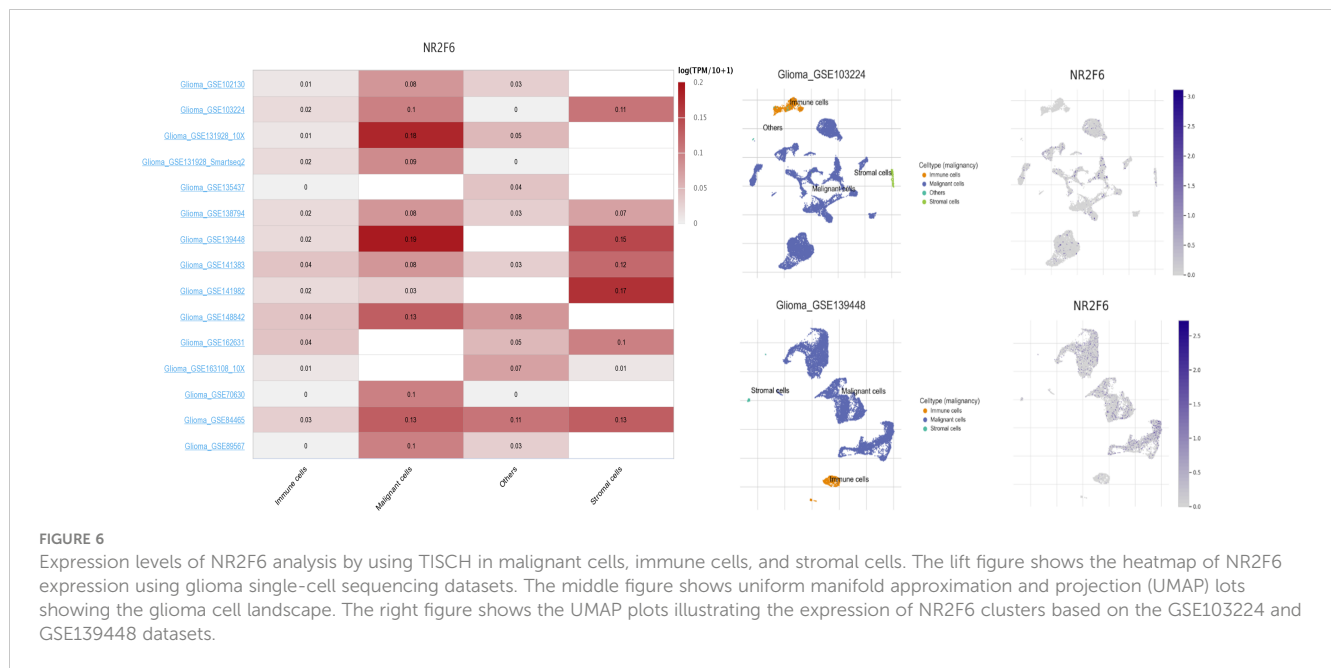


FIGURE 5 Analysis of tumor immune and stromal cell infiltration relative to the NR2F6 level in the TCGA dataset. **(A)** Proportions of the 22 types of tumor-infiltrating immune cells (TIICs) in different NR2F6 groups. **(B)** Correlation between NR2F6 expression and xCell scores in gliomas. Each colored square within the figure illustrates the correlation between NR2F6 and immune, stromal, and microenvironment scores and 46 cell types. Blue, positive correlation; red, negative correlation. * $p < 0.05$; ** $p < 0.01$; *** $p < 0.001$; **** $p < 0.0001$; ns, not significant.

infiltrating immune cells showed that NR2F6 was related to immunosuppressive cells such as regulatory T cells (Tregs), macrophages, and neutrophils. Therefore, we postulated that NR2F6 could be implicated in the immunosuppressive properties of glioma. To validate this, a correlation analysis was performed to determine the relationship between NR2F6 expression and critical immunosuppressive cytokines secreted by Tregs, tumor-associated macrophages, myeloid-derived suppressor cells, and tumor-associated neutrophils, as well as chemokines attracting these cells toward

the tumor (54–56). We found that NR2F6 was significantly positively correlated with the majority of the chemokines and immunosuppressive cytokines (Figures 7A, B). TAMs are the most important immune cells in the glioma microenvironment, which skew towards an M2 phenotype and play a critical role in immunosuppression (57, 58). Interestingly, NR2F6 was positively associated with key factors driving M2 phenotype differentiation (54, 55) (Figures 7C, D). Taken together, these findings revealed that NR2F6 might play an important immunosuppressive role in



glioma through recruiting and promoting immunosuppressive cells to secrete immune-inhibitory cytokines, as well as regulating M2 transformation.

NR2F6 was correlated with other immune checkpoint markers in gliomas

Considering the increasing clinical benefits of targeting immune checkpoints as a combination therapy (59, 60), we enrolled several immune checkpoint molecules that have been examined in clinical trials or clinical situations into correlation analysis to assess their relationship with NR2F6 in glioma samples using both TCGA and CGGA datasets (61, 62). NR2F6 showed a positive association with PD-1, LAG-3, and B7-H3 in both datasets (Figures 8A, B), indicating the potential synergistic effects of NR2F6 with these checkpoint members.

Discussion

Glioma, especially glioblastoma, is the most aggressive type of brain cancer and has a severe impact on patient health (63–65). Even with intensive therapies, the prognosis for glioblastoma patients is still dismal. This highlights the urgent need for new therapeutic approaches. In recent years, glioblastoma immunotherapy has gained increased interest, particularly in blocking immune checkpoints CTLA-4 and PD-1 (66). Glioma checkpoint inhibitor therapies have made continuous progress. However, a large proportion of patients do not respond to a single checkpoint inhibitor, therefore, it is necessary to explore novel immune checkpoints for additive or synergistic anti-tumor activities (66–68).

In this study, we comprehensively analyzed the expression pattern and related biological characteristics of the new immune

checkpoint NR2F6 and its clinical significance in glioma. First, we proved that the expression of NR2F6 was significantly upregulated in the higher malignant pathological type of gliomas. Moreover, we also found that high expression of NR2F6 was highly enriched in the phenotype of known malignant molecule, the IDH wild-type state. All these results indicated that NR2F6 expression was associated with more malignant biologic process as other solid and hematologic malignancies (33, 36, 69, 70). Most likely, these malignant biologic behaviors have contributed to tumor recurrence and resistance to therapy. Revealing the mechanism of NR2F6 in glioma may be the key to triumphing over this fatal disease. Our findings also showed that a high expression level of NR2F6 in glioma was relevant to a worse prognosis in both the TCGA and CGGA databases. This was consistent with previously reported results (34, 69, 71), overexpression of NR2F6 predicted poor patient prognosis in various malignant tumors, such as ovarian cancer, early cervical cancer, and head and neck cancer.

Through an in-depth analysis of the biological function of NR2F6 in glioma, we found that NR2F6 was involved in extracellular matrix organization, angiogenesis, cell adhesion, and other biological processes related to glioma progression. Meanwhile, NR2F6 was involved in multiple immune-related functions and pathways, such as leukocyte migration, inflammatory response, T cell receptor signaling, and innate immune response. Moreover, the results of the tumor-infiltrating cells analysis showed that NR2F6 expression significantly correlates with infiltrating stromal and immune cells in the glioma microenvironment. More interestingly, we found that NR2F6 was expressed in both immune and malignant cells, as well as stromal cells in glioma patients using the TISCH database. Hence, the function of NR2F6 in glioma may be realized by the wide expression of NR2F6 in immune cells, glioma cells, and stromal cells. Previous studies have demonstrated that NR2F6 plays a dual function in immune cells and in tumor cells. In effector T lymphocytes, NR2F6 negatively controls TCR/CD28-mediated

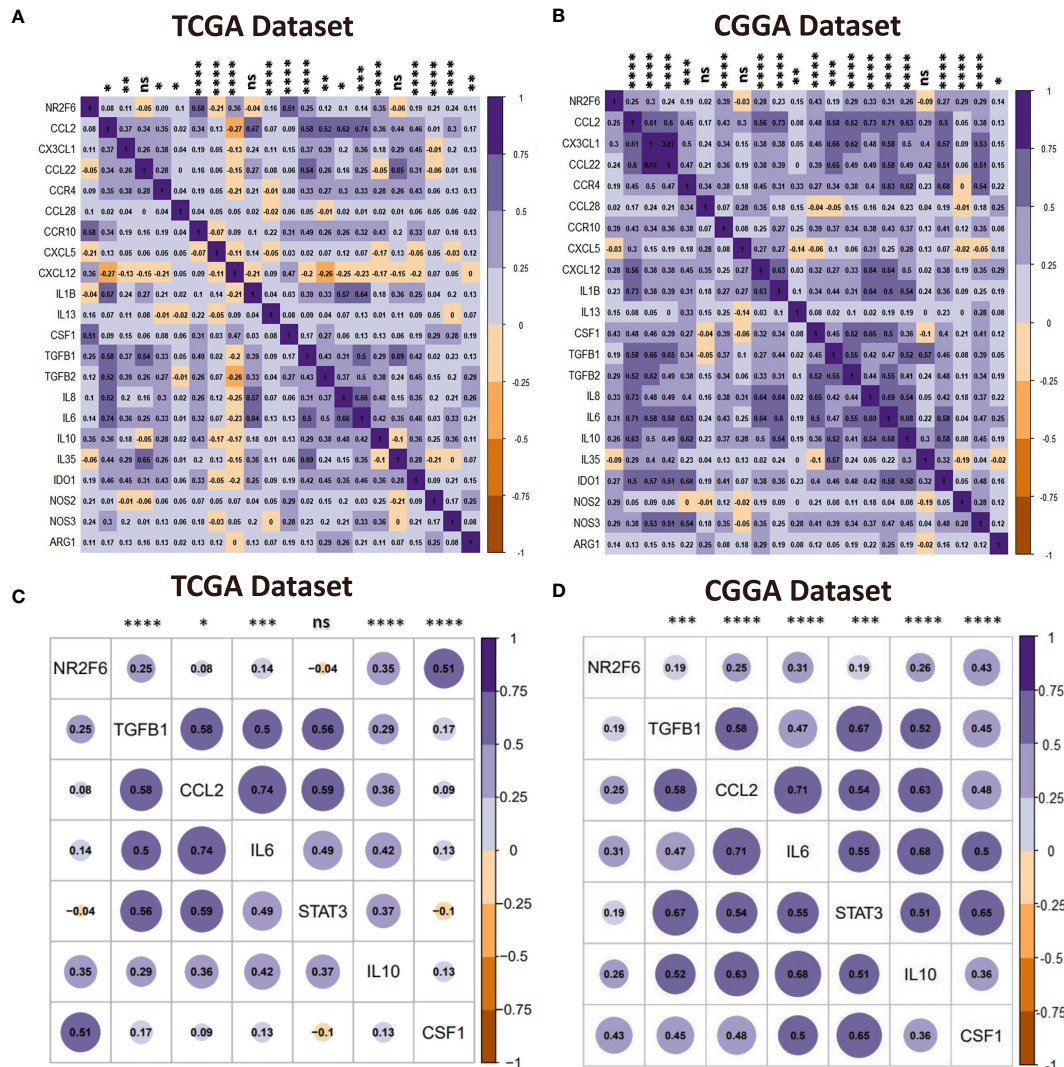


FIGURE 7 NR2F6 correlates with immunosuppressive activities. (A, B) Correlation of NR2F6 and immunosuppressive cells chemokines and immunosuppressive cytokines. The color intensity of the square is proportional to the correlation coefficients. Purple, positive correlation; Brown, negative correlation. (C, D) Correlation between NR2F6 and M2-promoting differentiation factors. Plot size and color depth show the intensity of the relationship, purple, positive correlation; brown, negative correlation; larger plot indicates a stronger correlation. * $p < 0.05$; ** $p < 0.01$; *** $p < 0.001$; **** $p < 0.0001$; ns, not significant.

signal transduction by antagonizing the DNA accessibility of activation-induced NFAT/AP-1 transcription factors at critical cytokine gene loci such as IL2 and IFN γ (28, 72). Recently, it has been shown that the genetic elimination of NR2F6 improves intratumoral CD4⁺ and CD8⁺ T-cell infiltration as well as effector functions by increasing the production of effector cytokines, resulting in strongly decelerated tumor growth in different spontaneous as well as transplantable mouse tumor models (39, 73). Besides its role in immune cells, NR2F6 is upregulated in various human cancer cells, such as cervical cancer (69), ovarian cancer (71, 74), colon carcinoma (36), leukemia (33, 35), lung cancer (70), breast cancer (37), and hepatocellular cancer (75), indicating that NR2F6 is involved in tumor promotion and progression.

Immune evasion and suppression are significant factors that prevent current immunotherapies from effectively fighting glioma. In tumors, immune-suppressive microenvironments promote the

lesion's growth and malignant properties while evading the body's immune response (76–78). Thus, the discovery of potential immunosuppressive features of glioma has considerable importance. Here, we conducted correlation analysis with two different large datasets, and found that NR2F6 expression significantly positively correlates with chemokines that recruit immunosuppressive immune cells, such as Treg, macrophages, and neutrophils, as well as key immunosuppressive cytokines secreted by these cells. Macrophages are the main immune cells in the glioma microenvironment, which may constitute up to 50% of the total cellular composition and are usually polarized to M2 phenotype (79). In gliomas, M2 macrophages exhibit an immunosuppressive phenotype and are associated with poor prognosis (80). Our analysis found that NR2F6 was positively related to M2 differentiation factors, suggesting that it may contribute to a tumor microenvironment favorable for tumor

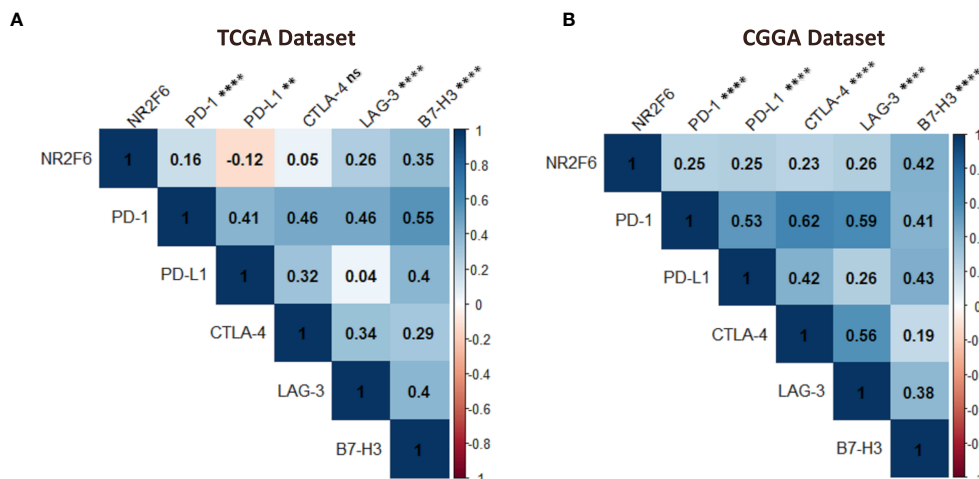


FIGURE 8

Association between NR2F6 and immune checkpoint markers in gliomas. the correlation of NR2F6 with other immune checkpoints including PD-1, PD-L1, CTLA-4, LAG-3, and B7-H3, based on TCGA (A) and CGGA (B) datasets. The color intensity of the square is proportional to the correlation coefficients. Blue, positive correlation; Red, negative correlation. ** $p < 0.01$; **** $p < 0.0001$; ns, not significant.

growth through promoting the M2-polarization of tumor-associated macrophages. In addition, a positive association was observed between NR2F6 and multiple immune checkpoints. Studies have revealed that the upregulation of immune checkpoints such as PD-1, LAG-3, and B7-H3 in glioma aids tumor immune evasion, resulting in T cell dysfunction (81–86), which suggests that NR2F6 may promote glioma immune evasion through upregulation of immune checkpoint expression.

Collectively, we can speculate that, on the one hand, NR2F6 functions as a nonimmunological regulator: expressed in cancer, facilitating angiogenesis and tumor invasion. On the other hand, NR2F6 functions as an innate and adaptative immunity regulator: expressed in immune and stromal cells, promoting tumor escape from immune surveillance, resulting in poor outcomes for glioma patients. Mechanistically, NR2F6 might regulate the immunosuppressive microenvironment by recruiting immunosuppressive cells to produce immunosuppressive cytokines, regulating M2 polarization, and combining with other immune checkpoint inhibitory molecules.

In comparison with monotherapy, immunotherapies targeting combined checkpoint inhibitory pathways have demonstrated profound clinical benefits (87, 88). Specifically, combination treatment approaches were more effective and associated with significantly longer progression-free survival compared to checkpoint monotherapy (87). Recent studies have shown that Nr2f6-deficient mice exhibit tumor growth inhibition due to an enhanced anti-tumor immune response against both solid tumors and metastases, leading to overall survival benefit (39, 73). More importantly, the genetic ablation of NR2F6 in combination with the established blockade of surface checkpoints (PD-L1, CTLA-4) has a strong synergistic effect compared to the inhibition of immune checkpoints alone (39, 89, 90). Moreover, anti-tumor immune responses in the Nr2f6^{-/-} therapy groups did not show any signs of immune-related adverse events (irAE) (39). Thus, it can be

inferred that the combination of NR2F6 blockade with other ICIs, such as PD-1, LAG-3, and B7-H3, may be an alternative treatment method for glioma patients.

The current study, which takes advantage of large population databases and systematic data analysis and shows promising transcriptional findings, provides novel insights regarding the involvement of the NR2F6 pathway in immune responses and cancer development. Therefore, it will greatly help with the development of more effective glioma treatment agents. However, future studies would help confirming the crucial role of NR2F6 in gliomas by examining NR2F6 expression at protein levels.

Conclusion

In recent years, immunotherapy research for glioma has increased exponentially due to the success of immune checkpoint blockade in other cancers. However, current immunotherapies have been proven ineffective for most patients. This has raised our interest in finding novel alternative checkpoint target, which could result in enhanced therapeutic benefits for glioma treatment.

This is the first study exploring the expression pattern, clinical value, and biological function of the immune checkpoint NR2F6 in glioma. We found that high expression of NR2F6 was closely related to high tumor aggressiveness and predicted a poor outcome, and that NR2F6 expression was involved in glioma immunosuppression, tumor invasion, and progression in the inflammatory microenvironment of glioma. Our results highlighted NR2F6, which positively interacts with other checkpoint proteins in glioma, as a promising candidate for immunotherapy. Further investigation is required on the potential use of NR2F6 pathway inhibition in combination with multiple other immune checkpoint blockade for the treatment of glioma.

Data availability statement

The original contributions presented in the study are included in the article/**Supplementary Material**. Further inquiries can be directed to the corresponding author.

Ethics statement

The studies involving human participants were reviewed and approved by the Ethical Board of the Ibn Rochd University Hospital of Casablanca. Written informed consent to participate in this study was provided by the participants' legal guardian/next of kin.

Author contributions

HM conceived and designed the study; collected, analyzed and interpreted the data; wrote the manuscript and performed the experiment. ON, collected and analyzed the data. SA and AG, contributed to the experimental work. AL, analyzed the data and revised the manuscript. AB, analyzed the data, revised the manuscript and supervised the study. All authors contributed to the article and approved the submitted version.

Funding

This work was supported by the Moroccan Ministry of Higher Education, Research and innovation through a "PPR1" project and by the Moroccan Ministry of Higher Education, Research and innovation and the Digital Development Agency "ADD" through an "Al-khawarizmi" project coordinated by AB.

Acknowledgments

We would like to thank all members of the Neurosurgery department, including, Pr. A. El azhari, Pr. S. Hilmani, Pr. K. Ibahoin, Pr. A. Bertal, Pr. A. Naja, Pr. A. Challaoui, Dr. A. Bocco, Dr.T. Mesbahi, Dr. Z. Ennhaili, Dr. M. Fatihi, Dr. O. Benhayoun, Dr. M. Haous, Dr. D. Kaba, Dr. I. Mahazou, Dr. A. Jehri, and nurses (S. Khayam, S. Watti, H. Bchira, Fz. Remiany).

References

- Zhang L, Liu Z, Li J, Huang T, Wang Y, Chang L, et al. Genomic analysis of primary and recurrent gliomas reveals clinical outcome related molecular features. *Sci Rep* (2019) 9:16058. doi: 10.1038/s41598-019-52515-9
- Ding J, Zhang L, Chen S, Cao H, Xu C, Wang X. lncRNA CCAT2 enhanced resistance of glioma cells against chemodrugs by disturbing the normal function of mir-424. *OncoTargets Ther* (2020) 13:1431. doi: 10.2147/OTT.S227831
- Feng P, Li Z, Li Y, Zhang Y. Phosphatase and tensin homolog mutation in immune cell infiltration and clinicopathological features of low-grade gliomas. *Front Mol Biosci* (2020) 7:562416. doi: 10.3389/fmolb.2020.562416
- Ostrom QT, Cioffi G, Gittleman H, Patil N, Waite K, Kruchko C, et al. CBTRUS Statistical Report: Primary Brain and Other Central Nervous System Tumors Diagnosed in the United States in 2012-2016. *Neuro-oncology* (2019) 21(Suppl 5):v1-v100. doi: 10.1093/neuonc/noz150
- Wang P-F, Cai H-Q, Zhang C-B, Li Y-M, Liu X, Wan J-H, et al. Molecular and clinical characterization of PTPN2 expression from RNA-seq data of 996 brain gliomas. *J Neuroinflamm* (2018) 15:145. doi: 10.1186/s12974-018-1187-4
- Reardon DA, Brandes AA, Omuro A, Mulholland P, Lim M, Wick A, et al. Effect of Nivolumab vs Bevacizumab in Patients With Recurrent Glioblastoma: The

Conflict of interest

The authors declare that the research was conducted in the absence of any commercial or financial relationships that could be construed as a potential conflict of interest.

Publisher's note

All claims expressed in this article are solely those of the authors and do not necessarily represent those of their affiliated organizations, or those of the publisher, the editors and the reviewers. Any product that may be evaluated in this article, or claim that may be made by its manufacturer, is not guaranteed or endorsed by the publisher.

Supplementary material

The Supplementary Material for this article can be found online at: <https://www.frontiersin.org/articles/10.3389/fimmu.2023.1139268/full#supplementary-material>

SUPPLEMENTARY FIGURE S1

Analysis of tumor immune and stromal cell infiltration relative to the NR2F6 level in the CGGA dataset. (A) Proportions of the 22 types of tumor-infiltrating immune cells (TIICs) in different NR2F6 groups. (B) Correlation between NR2F6 expression and xCell scores in gliomas. Each colored square within the figure illustrates the correlation between NR2F6 and immune, stromal, and microenvironment scores and 46 cell types. blue, positive correlation; red, negative correlation. * $p < 0.05$; ** $p < 0.01$; *** $p < 0.001$; **** $p < 0.0001$; ns, not significant.

SUPPLEMENTARY TABLE 1

Correlation between NR2F6 and clinicopathological characteristics in patients with gliomas in TCGA and CGGA.

SUPPLEMENTARY TABLE 2

Correlation between NR2F6 and clinicopathological characteristics in patients with gliomas in in-house cohort.

SUPPLEMENTARY TABLE 3

2159 DEGs in TCGA, including 1032 upregulated and 1127 downregulated genes.

SUPPLEMENTARY TABLE 4

772 DEGs in CGGA, including 375 upregulated and 397 downregulated genes.

- CheckMate 143 Phase 3 Randomized Clinical Trial. *JAMA Oncol* (2020) 6:1003–10. doi: 10.1001/jamaoncol.2020.1024
7. Stupp R, Hegi ME, Mason WP, van den Bent MJ, Taphoorn MJ, Janzer RC, et al. Effects of radiotherapy with concomitant and adjuvant temozolomide versus radiotherapy alone on survival in glioblastoma in a randomised phase III study: 5-year analysis of the EORTC-NCIC trial. *Lancet Oncol* (2009) 10:459–66. doi: 10.1016/S1470-2045(09)70025-7
8. Ratnam NM, Gilbert MR, Giles AJ. Immunotherapy in CNS cancers: the role of immune cell trafficking. *Neuro Oncol* (2019) 21:37–46. doi: 10.1093/neuonc/noy084
9. Gentles AJ, Newman AM, Liu CL, Bratman SV, Feng W, Kim D, et al. The prognostic landscape of genes and infiltrating immune cells across human cancers. *Nat Med* (2015) 21:938–45. doi: 10.1038/nm.3909
10. Cristescu R, Mogg R, Ayers M, Albright A, Murphy E, Yearley J, et al. Pan-tumor genomic biomarkers for PD-1 checkpoint blockade-based immunotherapy. *Sci (New York NY)* (2018) 362:eaar3593. doi: 10.1126/science.aar3593
11. Ohue Y, Nishikawa H. Regulatory T (Treg) cells in cancer: Can Treg cells be a new therapeutic target? *Cancer Sci* (2019) 110(7):2080–9. doi: 10.1111/cas.14069
12. Friebe E, Kapolou K, Unger S, Núñez N-G, Utz S, Rushing E-J, et al. Single-cell mapping of human brain cancer reveals tumor-specific instruction of tissue-invading leukocytes. *Cell* (2020) 181(7):1626–42. doi: 10.1016/j.cell.2020.04.055
13. Fu W, Wang W, Li H, Jiao Y, Huo R, Yan Z, et al. Single-Cell Atlas Reveals Complexity of the Immunosuppressive Microenvironment of Initial and Recurrent Glioblastoma. *Front Immunol* (2020) 11:835. doi: 10.3389/fimmu.2020.00835
14. Wang Q, Hu B, Hu X, Kim H, Squatrito M, Scarpace L, et al. Tumor Evolution of Glioma-Intrinsic Gene Expression Subtypes Associates with Immunological Changes in the Microenvironment. *Cancer Cell* (2017) 32:42–56.e6. doi: 10.1016/j.ccell.2017.06.003
15. Mohme M, Schlifke S, Maire CL, Rüniger A, Glau L, Mende KC, et al. Immunophenotyping of Newly Diagnosed and Recurrent Glioblastoma Defines Distinct Immune Exhaustion Profiles in Peripheral and Tumor-Infiltrating Lymphocytes. *Clin Cancer Res* (2018) 24(17):4187–4200. doi: 10.1158/1078-0432.CCR-17-2617
16. Raychaudhuri B, Rayman P, Ireland J, Ko J, Rini B, Borden EC, et al. Myeloid-derived suppressor cell accumulation and function in patients with newly diagnosed glioblastoma. *Neuro Oncol* (2011) 13:591–9. doi: 10.1093/neuonc/nor042
17. Yaghi NK, Gilbert MR. Immunotherapeutic Approaches for Glioblastoma Treatment. *Biomedicines* (2022) 10:427. doi: 10.3390/biomedicines10020427
18. Scott JN, Rewcastle NB, Brasher PMA, Fulton D, MacKinnon JA, Hamilton M, et al. Which glioblastoma multiforme patient will become a long-term survivor? A population-based study. *Ann Neurol* (1999) 46:183–8. doi: 10.1002/1531-8249(199908)46:2<183::AID-ANA7>3.0.CO;2-7
19. Bi WL, Beroukhi M. Beating the odds: extreme long-term survival with glioblastoma. *Neuro Oncol* (2014) 16:1159–60. doi: 10.1093/neuonc/nou166
20. Koury J, Lucero M, Cato C, Chang L, Geiger J, Henry D, et al. Immunotherapies: Exploiting the Immune System for Cancer Treatment. *J Immunol Res* (2018) 2018:9585614. doi: 10.1155/2018/9585614
21. Rotte A. Combination of CTLA-4 and PD-1 blockers for treatment of cancer. *J Exp Clin Cancer Res* (2019) 38:255. doi: 10.1186/s13046-019-1259-z
22. Rotte A, D'Orazi G, Bhandaru M. Nobel committee honors tumor immunologists. *J Exp Clin Cancer Res* (2018) 37:262. doi: 10.1186/s13046-018-0937-6
23. Jackson CM, Choi J, Lim M. Mechanisms of immunotherapy resistance: lessons from glioblastoma. *Nat Immunol* (2019) 20:1100–9. doi: 10.1038/s41590-019-0433-y
24. Habashy K, Mansour R, Moussalem C, Sawaya R, Massaad M. Challenges in glioblastoma immunotherapy: mechanisms of resistance and therapeutic approaches to overcome them. *Br J Cancer* (2022) 127:1–12. doi: 10.1038/s41416-022-01864-w
25. Xu S, Tang L, Li X, Fan F, Liu Z. Immunotherapy for glioma: Current management and future application. *Cancer Lett* (2020) 476:1–12. doi: 10.1016/j.canlet.2020.02.002
26. Desbaillets N, Hottinger AF. Immunotherapy in Glioblastoma: A Clinical Perspective. *Cancers (Basel)* (2021) 13:3721. doi: 10.3390/cancers13153721
27. Klepsch V, Siegmund K, Baier G. Emerging Next-Generation Target for Cancer Immunotherapy Research: The Orphan Nuclear Receptor NR2F6. *Cancers* (2021) 13:2600. doi: 10.3390/cancers13112600
28. Hermann-Kleiter N, Gruber T, Lutz-Nicoladoni C, Thuille N, Fresser F, Labi V, et al. The nuclear orphan receptor NR2F6 suppresses lymphocyte activation and T helper 17-dependent autoimmunity. *Immunity* (2008) 29:205–16. doi: 10.1016/j.immuni.2008.06.008
29. Lee S-O, Li X, Khan S, Safe S. Targeting NR4A1 (TR3) in cancer cells and tumors. *Expert Opin Ther Targets* (2011) 15:195–206. doi: 10.1517/14728222.2011.547481
30. Riggins RB, Mazzotta MM, Maniya OZ, Clarke R. Orphan nuclear receptors in breast cancer pathogenesis and therapeutic response. *Endocrine-Related Cancer* (2010) 17:R213–31. doi: 10.1677/ERC-10-0058
31. Ranhoski HS. The NR4A orphan nuclear receptors: mediators in metabolism and diseases. *J Recept Signal Transduct Res* (2015) 35:184–8. doi: 10.1019/10799893.2014.948555
32. Holbeck S, Chang J, Best AM, Bookout AL, Mangelsdorf DJ, Martinez ED. Expression profiling of nuclear receptors in the NCI60 cancer cell panel reveals receptor-drug and receptor-gene interactions. *Mol Endocrinol* (2010) 24:1287–96. doi: 10.1210/me.2010-0040
33. Ichim CV, Atkins HL, Iscove NN, Wells RA. Identification of a role for the nuclear receptor EAR-2 in the maintenance of clonogenic status within the leukemia cell hierarchy. *Leukemia* (2011) 25:1687–96. doi: 10.1038/leu.2011.137
34. Klapper L, Ribbat-Idel J, Kuppler P, Paulsen F-O, Bruchhage K-L, Rades D, et al. NR2F6 as a Prognostic Biomarker in HNSCC. *Int J Mol Sci* (2020) 21:5527. doi: 10.3390/ijms21155527
35. Eckerle S, Brune V, Döring C, Tiacci E, Bohle V, Sundström C, et al. Gene expression profiling of isolated tumour cells from anaplastic large cell lymphomas: insights into its cellular origin, pathogenesis and relation to Hodgkin lymphoma. *Leukemia* (2009) 23:2129–38. doi: 10.1038/leu.2009.161
36. Li X-B, Jiao S, Sun H, Xue J, Zhao W-T, Fan L, et al. The orphan nuclear receptor EAR2 is overexpressed in colorectal cancer and it regulates survivability of colon cancer cells. *Cancer Lett* (2011) 309:137–44. doi: 10.1016/j.canlet.2011.05.025
37. Muscat GEO, Eriksson NA, Byth K, Loi S, Graham D, Jindal S, et al. Research Resource: Nuclear Receptors as Transcriptome: Discriminant and Prognostic Value in Breast Cancer. *Mol Endocrinol* (2013) 27:350–65. doi: 10.1210/me.2012-1265
38. Hermann-Kleiter N, Baier G. Orphan nuclear receptor NR2F6 acts as an essential gatekeeper of Th17 CD4+ T cell effector functions. *Cell Commun Signal* (2014) 12:38. doi: 10.1186/1478-811X-12-38
39. Klepsch V, Hermann-Kleiter N, Do-Dinh P, Jakic B, Offermann A, Efreanova M, et al. Nuclear receptor NR2F6 inhibition potentiates responses to PD-L1/PD-1 cancer immune checkpoint blockade. *Nat Commun* (2018) 9:1538. doi: 10.1038/s41467-018-04004-2
40. Ritchie ME, Phipson B, Wu D, Hu Y, Law CW, Shi W, et al. limma powers differential expression analyses for RNA-sequencing and microarray studies. *Nucleic Acids Res* (2015) 43:e47. doi: 10.1093/nar/gkv007
41. Leek JT, Johnson WE, Parker HS, Jaffe AE, Storey JD. The sva package for removing batch effects and other unwanted variation in high-throughput experiments. *Bioinformatics* (2012) 28:882–3. doi: 10.1093/bioinformatics/bts034
42. Ghouziani A, Lakhdar A, Rafii S, Karkouri M, Badou A. The immune checkpoint VISTA exhibits high expression levels in human gliomas and associates with a poor prognosis. *Sci Rep* (2021) 11:21504. doi: 10.1038/s41598-021-00835-0
43. Ghouziani A, Rafii S, Karkouri M, Lakhdar A, Badou A. The Promising IgSF11 Immune Checkpoint Is Highly Expressed in Advanced Human Gliomas and Associates to Poor Prognosis. *Front Oncol* (2020) 10:608609. doi: 10.3389/fonc.2020.608609
44. Livak KJ, Schmittgen TD. Analysis of relative gene expression data using real-time quantitative PCR and the 2^{-Delta Delta C(T)} Method. *Methods* (2001) 25(4):402–8. doi: 10.1006/meth.2001.1262
45. Newman AM, Liu CL, Green MR, Gentles AJ, Feng W, Xu Y, et al. Robust enumeration of cell subsets from tissue expression profiles. *Nat Methods* (2015) 12:453–7. doi: 10.1038/nmeth.3337
46. Newman AM, Steen CB, Liu CL, Gentles AJ, Chaudhuri AA, Scherer F, et al. Determining cell type abundance and expression from bulk tissues with digital cytometry. *Nat Biotechnol* (2019) 37:773–82. doi: 10.1038/s41587-019-0114-2
47. Aran D, Hu Z, Butte AJ. xCell: digitally portraying the tissue cellular heterogeneity landscape. *Genome Biol* (2017) 18:220. doi: 10.1186/s13059-017-1349-1
48. Sun D, Wang J, Han Y, Dong X, Ge J, Zheng R, et al. TISCH: a comprehensive web resource enabling interactive single-cell transcriptome visualization of tumor microenvironment. *Nucleic Acids Res* (2020) 49:D1420–30. doi: 10.1093/nar/gkaa1020
49. Nefel C, Laffy J, Filbin MG, Hara T, Shore ME, Rahme GJ, et al. An integrative model of cellular states, plasticity and genetics for glioblastoma. *Cell* (2019) 178:835–849.e21. doi: 10.1016/j.cell.2019.06.024
50. Huang DW, Sherman BT, Lempicki RA. Systematic and integrative analysis of large gene lists using DAVID bioinformatics resources. *Nat Protoc* (2009) 4:44–57. doi: 10.1038/nprot.2008.211
51. Ashburner M, Ball CA, Blake JA, Botstein D, Butler H, Cherry JM, et al. Gene ontology: tool for the unification of biology. The Gene Ontology Consortium. *Nat Genet* (2000) 25:25–9. doi: 10.1038/75556
52. Kanehisa M, Furumichi M, Tanabe M, Sato Y, Morishima K. KEGG: new perspectives on genomes, pathways, diseases and drugs. *Nucleic Acids Res* (2017) 45: D353–61. doi: 10.1093/nar/gkw1092
53. Yan H, Parsons DW, Jin G, McLendon R, Rasheed BA, Yuan W, et al. IDH1 and IDH2 Mutations in Gliomas. *New Engl J Med* (2009) 360:765–73. doi: 10.1056/NEJMoa0808710
54. Ma Q, Long W, Xing C, Chu J, Luo M, Wang HY, et al. Cancer Stem Cells and Immunosuppressive Microenvironment in Glioma. *Front Immunol* (2018) 9:2924. doi: 10.3389/fimmu.2018.02924
55. Motz GT, Coukos G. Deciphering and reversing tumor immune suppression. *Immunity* (2013) 39:61–73. doi: 10.1016/j.immuni.2013.07.005
56. Grabowski MM, Sankey EW, Ryan KJ, Chongathidkiet P, Lorrey SJ, Wilkinson DS, et al. Immune suppression in gliomas. *J Neurooncol* (2021) 151:3–12. doi: 10.1007/s11060-020-03483-y

57. Hambardzumyan D, Gutmann DH, Kettenmann H. The role of microglia and macrophages in glioma maintenance and progression. *Nat Neurosci* (2016) 19:20–7. doi: 10.1038/nn.4185
58. Qian B-Z, Pollard JW. Macrophage diversity enhances tumor progression and metastasis. *Cell* (2010) 141:39–51. doi: 10.1016/j.cell.2010.03.014
59. Sharma P, Allison JP. The future of immune checkpoint therapy. *Science* (2015) 348:56–61. doi: 10.1126/science.aaa8172
60. Zhao X, Subramanian S. Oncogenic pathways that affect antitumor immune response and immune checkpoint blockade therapy. *Pharmacol Ther* (2018) 181:76–84. doi: 10.1016/j.pharmthera.2017.07.004
61. Anderson AC, Joller N, Kuchroo VK. Lag-3, Tim-3, and TIGIT: Co-inhibitory Receptors with Specialized Functions in Immune Regulation. *Immunity* (2016) 44:989–1004. doi: 10.1016/j.immuni.2016.05.001
62. Shi T, Ma Y, Yu L, Jiang J, Shen S, Hou Y, et al. Cancer Immunotherapy: A Focus on the Regulation of Immune Checkpoints. *Int J Mol Sci* (2018) 19:1389. doi: 10.3390/ijms19051389
63. Jiang T, Nam D-H, Ram Z, Poon W-S, Wang J, Boldbaatar D, et al. Clinical practice guidelines for the management of adult diffuse gliomas. *Cancer Lett* (2021) 499:60–72. doi: 10.1016/j.canlet.2020.10.050
64. Hu H, Mu Q, Bao Z, Chen Y, Liu Y, Chen J, et al. Mutational Landscape of Secondary Glioblastoma Guides MET-Targeted Trial in Brain Tumor. *Cell* (2018) 175:1665–1678.e18. doi: 10.1016/j.cell.2018.09.038
65. Van Meir EG, Hadjipanayis CG, Norden AD, Shu H-K, Wen PY, Olson JJ. Exciting new advances in neuro-oncology: the avenue to a cure for malignant glioma. *CA Cancer J Clin* (2010) 60:166–93. doi: 10.3322/caac.20069
66. Huang J, Liu F, Liu Z, Tang H, Wu H, Gong Q, et al. Immune checkpoint in glioblastoma: promising and challenging. *Front Pharmacol* (2017) 8:242. doi: 10.3389/fphar.2017.00242
67. Reardon DA, Freeman G, Wu C, Chiocca EA, Wucherpennig KW, Wen PY, et al. Immunotherapy advances for glioblastoma. *Neuro Oncol* (2014) 16:1441–58. doi: 10.1093/neuonc/nou212
68. Ghouziani A, Kandoussi S, Tall M, Reddy KP, Rafii S, Badou A. Immune Checkpoint Inhibitors in Human Glioma Microenvironment. *Front Immunol* (2021) 12:679425. doi: 10.3389/fimmu.2021.679425
69. Niu C, Sun X, Zhang W, Li H, Xu L, Li J, et al. NR2F6 Expression Correlates with Pelvic Lymph Node Metastasis and Poor Prognosis in Early-Stage Cervical Cancer. *Int J Mol Sci* (2016) 17:1694. doi: 10.3390/ijms17101694
70. Yang SL, Guan HQ, Yang HB, Chen Y, Huang XY, Chen L, et al. The expression and biological effect of NR2F6 in non-small cell lung cancer. *Front Oncol* (2022) 12:940234. doi: 10.3389/fonc.2022.940234
71. Liu J, Li T, Liu X-L. DDA1 is induced by NR2F6 in ovarian cancer and predicts poor survival outcome. *Eur Rev Med Pharmacol Sci* (2017) 21:1206–13.
72. Hermann-Kleiter N, Meisel M, Fresser F, Thuille N, Müller M, Roth L, et al. Nuclear orphan receptor NR2F6 directly antagonizes NFAT and ROR γ t binding to the Il17a promoter. *J Autoimmun* (2012) 39:428–40. doi: 10.1016/j.jaut.2012.07.007
73. Hermann-Kleiter N, Klepsch V, Wallner S, Siegmund K, Klepsch S, Tuzlak S, et al. The Nuclear Orphan Receptor NR2F6 Is a Central Checkpoint for Cancer Immune Surveillance. *Cell Rep* (2015) 12:2072–85. doi: 10.1016/j.celrep.2015.08.035
74. Li H, Zhang W, Niu C, Lin C, Wu X, Jian Y, et al. Nuclear orphan receptor NR2F6 confers cisplatin resistance in epithelial ovarian cancer cells by activating the Notch3 signaling pathway. *Int J Cancer* (2019) 145:1921–34. doi: 10.1002/ijc.32293
75. Wang L, Long H, Zheng Q, Bo X, Xiao X, Li B. Circular RNA circRHOT1 promotes hepatocellular carcinoma progression by initiation of NR2F6 expression. *Mol Cancer* (2019) 18:119. doi: 10.1186/s12943-019-1046-7
76. Kone A-S, Ait Ssi S, Sahraoui S, Badou A. BTN3A: A Promising Immune Checkpoint for Cancer Prognosis and Treatment. *Int J Mol Sci* (2022) 23:13424. doi: 10.3390/ijms232113424
77. Heimberger AB, Abou-Ghazal M, Reina-Ortiz C, Yang DS, Sun W, Qiao W, et al. Incidence and prognostic impact of FoxP3+ regulatory T cells in human gliomas. *Clin Cancer Res* (2008) 14:5166–72. doi: 10.1158/1078-0432.CCR-08-0320
78. Ait Ssi S, Chraa D, El Azhary K, Sahraoui S, Olive D, Badou A. Prognostic Gene Expression Signature in Patients With Distinct Glioma Grades. *Front Immunol* (2021) 12:685213. doi: 10.3389/fimmu.2021.685213
79. Wei J, Chen P, Gupta P, Ott M, Zamler D, Kassab C, et al. Immune biology of glioma-associated macrophages and microglia: functional and therapeutic implications. *Neuro Oncol* (2020) 22:180–94. doi: 10.1093/neuonc/noz212
80. Chen Y, Song Y, Du W, Gong L, Chang H, Zou Z. Tumor-associated macrophages: an accomplice in solid tumor progression. *J Biomed Sci* (2019) 26:78. doi: 10.1186/s12929-019-0568-z
81. Xue S, Hu M, Iyer V, Yu J. Blocking the PD-1/PD-L1 pathway in glioma: a potential new treatment strategy. *J Hematol Oncol* (2017) 10:81. doi: 10.1186/s13045-017-0455-6
82. Woroniecka K, Chongsathidkiet P, Rhodin K, Kemeny H, Dechant C, Farber SH, et al. T-Cell Exhaustion Signatures Vary with Tumor Type and Are Severe in Glioblastoma. *Clin Cancer Res* (2018) 24:4175–86. doi: 10.1158/1078-0432.CCR-17-1846
83. Zhang C, Zhang Z, Li F, Shen Z, Qiao Y, Li L, et al. Large-scale analysis reveals the specific clinical and immune features of B7-H3 in glioma. *Oncol Immunology* (2018) 7:e1461304. doi: 10.1080/2162402X.2018.1461304
84. Lemke D, Pfenning P-N, Sahn F, Klein A-C, Kempf T, Warnken U, et al. Costimulatory Protein 4lgB7H3 Drives the Malignant Phenotype of Glioblastoma by Mediating Immune Escape and Invasiveness. *Clin Cancer Res* (2012) 18:105–17. doi: 10.1158/1078-0432.CCR-11-0880
85. Wang L-C, Wang Y-L, He B, Zheng Y-J, Yu H-C, Liu Z-Y, et al. Expression and clinical significance of VISTA, B7-H3, and PD-L1 in glioma. *Clin Immunol* (2022) 245:109178. doi: 10.1016/j.clim.2022.109178
86. Janakiram M, Shah UA, Liu W, Zhao A, Schoenberg MP, Zang X. The third group of the B7-CD28 immune checkpoint family: HHLA2, TMIGD2, B7x, and B7-H3. *Immunol Rev* (2017) 276:26–39. doi: 10.1111/imr.12521
87. Larkin J, Chiarion-Sileni V, Gonzalez R, Grob JJ, Cowey CL, Lao CD, et al. Combined Nivolumab and Ipilimumab or Monotherapy in Untreated Melanoma. *N Engl J Med* (2015) 373:23–34. doi: 10.1056/NEJMoa1504300
88. Postow MA, Chesney J, Pavlick AC, Robert C, Grossmann K, McDermott D, et al. Nivolumab and ipilimumab versus ipilimumab in untreated melanoma. *N Engl J Med* (2015) 372:2006–17. doi: 10.1056/NEJMoa1414428
89. Lu Y-F, Zhou J-P, Zhou Q-M, Yang X-Y, Wang X-J, Yu J-N, et al. Ultra-thin layered double hydroxide-mediated photothermal therapy combine with asynchronous blockade of PD-L1 and NR2F6 inhibit hepatocellular carcinoma. *J Nanobiotechnol* (2022) 20(1):1–17. doi: 10.1186/s12951-022-01565-9
90. Klepsch V, Pommermayr M, Humer D, Brigo N, Hermann-Kleiter N, Baier G. Targeting the orphan nuclear receptor NR2F6 in T cells primes tumors for immune checkpoint therapy. *Cell Communication Signaling* (2020) 18:1–12. doi: 10.1186/s12964-019-0454-z