



## OPEN ACCESS

## Edited by:

Giulia Carla Marchetti,  
University of Milan, Italy

## Reviewed by:

Davide Firinu,  
Università di Cagliari,  
ItalyLetizia Santinelli,  
Sapienza University of Rome, Italy

## \*Correspondence:

Ricardo Pujol-Borrell  
rpujol@vhio.net  
Manuel Hernández-González  
manhernandez@vhebron.net

†These authors share first authorship

‡These authors have contributed  
equally to this work and share  
last authorship

## Specialty section:

This article was submitted to  
Viral Immunology,  
a section of the journal  
Frontiers in Immunology

Received: 23 March 2022

Accepted: 19 May 2022

Published: 29 June 2022

## Citation:

Sánchez-Montalvá A, Álvarez-Sierra D, Martínez-Gallo M, Perurena-Prieto J, Arrese-Muñoz I, Ruiz-Rodríguez JC, Espinosa-Pereiro J, Bosch-Nicolau P, Martínez-Gómez X, Antón A, Martínez-Valle F, Riveiro-Barciela M, Blanco-Grau A, Rodríguez-Frías F, Castellano-Escuder P, Poyatos-Canton E, Bas-Minguet J, Martínez-Cáceres E, Sánchez-Pla A, Zurera-Egea C, Teniente-Serra A, Hernández-González M, Pujol-Borrell R and the "Hospital Vall d'Hebron Group for the study of COVID-19 immune profile" (2022) Exposing and Overcoming Limitations of Clinical Laboratory Tests in COVID-19 by Adding Immunological Parameters; A Retrospective Cohort Analysis and Pilot Study. *Front. Immunol.* 13:902837. doi: 10.3389/fimmu.2022.902837

# Exposing and Overcoming Limitations of Clinical Laboratory Tests in COVID-19 by Adding Immunological Parameters; A Retrospective Cohort Analysis and Pilot Study

Adrián Sánchez-Montalvá<sup>1,2,3,4†</sup>, Daniel Álvarez-Sierra<sup>5†</sup>, Mónica Martínez-Gallo<sup>5,6,7</sup>, Janire Perurena-Prieto<sup>5,7</sup>, Iria Arrese-Muñoz<sup>6</sup>, Juan Carlos Ruiz-Rodríguez<sup>8,9</sup>, Juan Espinosa-Pereiro<sup>1,2,4</sup>, Pau Bosch-Nicolau<sup>1,2,4</sup>, Xavier Martínez-Gómez<sup>10,11,12</sup>, Andrés Antón<sup>13,14,15</sup>, Ferran Martínez-Valle<sup>3,16,17</sup>, Mar Riveiro-Barciela<sup>3,18,19</sup>, Albert Blanco-Grau<sup>20</sup>, Francisco Rodríguez-Frías<sup>20</sup>, Pol Castellano-Escuder<sup>21</sup>, Elisabet Poyatos-Canton<sup>22</sup>, Jordi Bas-Minguet<sup>22</sup>, Eva Martínez-Cáceres<sup>7,23,24</sup>, Alex Sánchez-Pla<sup>21,25</sup>, Coral Zurera-Egea<sup>24</sup>, Aina Teniente-Serra<sup>7,23,24</sup>, Manuel Hernández-González<sup>5,6,7\*†</sup>, Ricardo Pujol-Borrell<sup>5,6,7\*†</sup> and the "Hospital Vall d'Hebron Group for the study of COVID-19 immune profile"

<sup>1</sup> Infectious Disease Department, Hospital Universitari Vall Hebron, Barcelona, Spain, <sup>2</sup> International Health Program Institut Català de la Salut, Vall Hebron Research Institute (VHIR), Barcelona, Spain, <sup>3</sup> Department of Medicine, Universitat Autònoma Barcelona, Barcelona, Spain, <sup>4</sup> Centro de Investigación Biomédica en Red de Enfermedades Infecciosas (CIBERINFEC), Instituto de Salud Carlos III, Barcelona, Spain, <sup>5</sup> Translational Immunology Research Group, Vall Hebron Research Institute (VHIR), Barcelona, Spain, <sup>6</sup> Immunology Department, Hospital Universitari Vall Hebron, Barcelona, Spain, <sup>7</sup> Department of Cell Biology, Physiology, and Immunology, Universitat Autònoma Barcelona, Barcelona, Spain, <sup>8</sup> Intensive Medicine Department, Hospital Universitari Vall Hebron, Barcelona, Spain, <sup>9</sup> Organ Dysfunction and Resuscitation Research Group, Vall Hebron Research Institute (VHIR), Barcelona, Spain, <sup>10</sup> Epidemiology and Public Health Department, Hospital Universitari Vall Hebron, Barcelona, Spain, <sup>11</sup> Epidemiology and Public Health Research Group, Vall Hebron Research Institute (VHIR), Barcelona, Spain, <sup>12</sup> Department of Pediatrics, Obstetrics and Gynecology, Epidemiology and Public Health, Universitat Autònoma Barcelona, Barcelona, Spain, <sup>13</sup> Microbiology Department, Hospital Universitari Vall Hebron, Barcelona, Spain, <sup>14</sup> Microbiology Research Group, Vall Hebron Research Institute (VHIR), Barcelona, Spain, <sup>15</sup> Department of Genetics and Microbiology, Autonomous University of Barcelona, Barcelona, Spain, <sup>16</sup> Internal Medicine Department, Hospital Universitari Vall Hebron, Barcelona, Spain, <sup>17</sup> Systemic Disease Research Group, Vall Hebron Research Institute (VHIR), Barcelona, Spain, <sup>18</sup> Liver Disease Research Group, Vall Hebron Research Institute (VHIR), Barcelona, Spain, <sup>19</sup> CIBERehd - Instituto de Salud Carlos III, Barcelona, Spain, <sup>20</sup> Clinical Biochemistry Department, Hospital Universitari Vall d'Hebron and Clinical Biochemistry Research Group, Vall Hebron Research Institute (VHIR), Barcelona, Spain, <sup>21</sup> Bioinformatics and Statistics Group, University of Barcelona, Barcelona, Spain, <sup>22</sup> Immunology Division, Bellvitge University Hospital, Hospitalet de Llobregat, Barcelona, Spain, <sup>23</sup> Immunology Group, Germans Trias i Pujol Health Sciences Research Institute (IGTP), Badalona (Barcelona), Spain, <sup>24</sup> Immunology Department, Hospital Universitari Germans Trias Pujol, Badalona (Barcelona), Spain, <sup>25</sup> Statistics and Bioinformatics Unit, Vall Hebron Research Institute (VHIR), Barcelona, Spain

**Background:** Two years since the onset of the COVID-19 pandemic no predictive algorithm has been generally adopted for clinical management and in most algorithms the contribution of laboratory variables is limited.

**Objectives:** To measure the predictive performance of currently used clinical laboratory tests alone or combined with clinical variables and explore the predictive power of immunological tests adequate for clinical laboratories. Methods: Data from 2,600 COVID-19 patients of the first wave of the pandemic in the Barcelona area (exploratory

cohort of 1,579, validation cohorts of 598 and 423 patients) including clinical parameters and laboratory tests were retrospectively collected. 28-day survival and maximal severity were the main outcomes considered in the multiparametric classical and machine learning statistical analysis. A pilot study was conducted in two subgroups (n=74 and n=41) measuring 17 cytokines and 27 lymphocyte phenotypes respectively.

**Findings:** 1) Despite a strong association of clinical and laboratory variables with the outcomes in classical pairwise analysis, the contribution of laboratory tests to the combined prediction power was limited by redundancy. Laboratory variables reflected only two types of processes: inflammation and organ damage but none reflected the immune response, one major determinant of prognosis. 2) Eight of the thirty variables: age, comorbidity index, oxygen saturation to fraction of inspired oxygen ratio, neutrophil-lymphocyte ratio, C-reactive protein, aspartate aminotransferase/alanine aminotransferase ratio, fibrinogen, and glomerular filtration rate captured most of the combined statistical predictive power. 3) The interpretation of clinical and laboratory variables was moderately improved by grouping them in two categories i.e., inflammation related biomarkers and organ damage related biomarkers; Age and organ damage-related biomarker tests were the best predictors of survival, and inflammatory-related ones were the best predictors of severity. 4) The pilot study identified immunological tests (CXCL10, IL-6, IL-1RA and CCL2), that performed better than most currently used laboratory tests.

**Conclusions:** Laboratory tests for clinical management of COVID 19 patients are valuable but limited predictors due to redundancy; this limitation could be overcome by adding immunological tests with independent predictive power. Understanding the limitations of tests in use would improve their interpretation and simplify clinical management but a systematic search for better immunological biomarkers is urgent and feasible.

**Keywords:** SARS-CoV-2 infection, predictive risk-profile, clinical laboratory tests, cytokines, chemokines, acute phase reactants, CXCL10, flow cytometry

## INTRODUCTION

Over two years after the onset of the coronavirus disease (COVID-19) pandemic, the clinical, laboratory, and imaging features of patients with severe acute respiratory syndrome coronavirus 2 (SARS-CoV-2) infection have been widely described (1–4). The wide clinical spectrum of COVID-19 became obvious during the first wave, and although the effect of inoculum size should be considered (5, 6), variation has been mainly attributed to host factors, as variants of concern only appeared later (7) (8). The analysis of the first wave has therefore obvious advantages for the identification of host factors and their biomarkers. Among host factors that affect the severity of illness, age, sex, genetic background, immunological status and prior immunity to coronaviruses (9) have been evaluated. Gene mutations of the type interferon (IFN) pathway (10) and antibodies to type IFNs play a clear role in a small proportion of cases (11); polymorphisms in several genes associated with immune response have been identified in genome-wide association studies (12, 13); however, to date, the genotypes that convey a risk of severe COVID-19 have not been defined in a way that is practically applicable for prediction in clinical practice.

Reports originating from the analysis of electronic health records have confirmed the predictive value of clinical laboratory tests usually associated with poor outcomes in other infections i.e., blood cell counts, acute-phase reactants (APRs), and coagulation factors (14–22) but none of the proposed predictive algorithms combining demographic, clinical, and laboratory data have been widely adopted. In small case series, the state of the immune system in COVID-19 patients has been analyzed using the latest tools (23–30) leading to the detection of deep perturbations in the immune system. However, inferences of the effect of these perturbations in the efficiency of the immune response and their clinical consequences are not simple and, to date, no new predictive tests have been validated and added to the clinical laboratory toolbox for COVID-19 management, reflecting not only intrinsic technical difficulties, but also the excessive separation between research and clinical laboratories.

We report a retrospective analysis of data from a cohort of 1,579 consecutive patients treated at the Vall d'Hebron University Hospital (HUVH) during the first wave of COVID-19 in Barcelona. We validated the main conclusions by

comparison with cohorts from two other academic hospitals that belong to the same healthcare provider (the Catalan Institute of Health [ICS]) in Catalonia, Spain.

We initiated the study with the hypothesis that the predictive power of clinical laboratory tests had not been fully exploited and with the main objective of improving their interpretation. A secondary objective was to explore a selection of robust immunological tests that might identify an early dysregulated immune response associated with severe COVID-19, with the hypothesis that these tests could provide additional non-redundant prediction power.

## PATIENTS AND METHODS

### Patients

The database of the HUVH cohort was obtained by merging data sets from the Infectious Disease, Epidemiology and Public Health, and Clinical Laboratory departments. Consecutive patients aged  $\geq 18$  years with a SARS-CoV-2 positive polymerase chain reaction (PCR) from any respiratory sample, hospitalized in HUVH between 10 March and 29 April 2020 were included in the study (see **Tables 1, S1**). This COVID-19 HUVH cohort consisted of 1,579 patients (**Figure 1**). All patient medical records included the main symptoms, days from symptom onset (DFSO), initial assessment of vital signs, comorbidities, length of hospital stay (LOS), intensive care unit (ICU) admission, oxygen supplementation and supportive ventilation requirements, outcome during the hospitalization and results from clinical laboratory tests. Data were censored on the date of discharge, death, or 28 days after admission, whichever occurred first. The outcome of all patients discharged before the 28th day was ascertained through a review of the primary care electronic health record annotations.

Comorbidities were classified as 1) cardiovascular disease and/or hypertension, 2) chronic lung disease, 3) diabetes, 4) neurological disease, 5) chronic kidney disease, 6) active non-terminal malignancy, 7) obesity, and 8) chronic liver disease. Each comorbidity was assigned value of 1, and a global comorbidity index (1 to 8) was generated. The clinical severity category was assigned as the maximal score attained during hospitalization, using a simplified version of the World Health Organization (WHO) 10-point COVID-19 disease clinical progression score (31) as follows: 1) Mild, no activity limitations or not requiring hospitalization; 2) Moderate, hospitalized, not requiring high-flow oxygen therapy or ventilation support; 3) Severe, hospitalized requiring high-flow oxygen therapy or ventilation support; and 4) Deceased, those who died before day 28 of hospitalization. These categories correspond to the WHO scores 1–3, 4–5, 6–9, and 10, respectively. For some analyses, the mild and moderate categories were combined into a non-severe category, and the severe and deceased categories were combined into a severe category.

The validation cohorts from the Bellvitge University Hospital (HUB) and the Germans Trias i Pujol University Hospital (HUGTP) included 598 and 423 patients, respectively, and, together with the HUVH cohort, at total of 2,600 patients were included in the analysis (**Figure 1**).

### Outcomes

Final outcomes for comparison included survival vs. death, and maximum clinical severity. For the validation cohorts the only available outcome was survival for 28 days (survivors) and death (deceased).

### Clinical Laboratory Tests

Detection of SARS-CoV-2 was first performed by an in-house PCR assay with primers and probes from 2019-nCoV CDC PCR panel, using the One-Step RT-PCR kit (Qiagen, Germany). When commercial assays became available, a real-time multiplex RT-PCR assay (Laplet 2019-nCoV Assay, Seegene, South Korea) was used.

The clinical laboratories were equipped with Beckman Coulter (Brea, CA, USA) and Roche Diagnostics (Indianapolis, IN, USA) automatic analyzers that were integrated with two TECAN (Zug, Switzerland) continuous lines and two automatic cold storage and retrieval units that ensure sample integrity. IL-6 levels were measured in a Elysis<sup>®</sup> Cobas analyzer (Roche). Samples for assessing the predictive performance of clinical laboratory tests were taken on admission to the hospital; glomerular filtration rate (GFR) was calculated by applying the algorithm of Levey et al. (32); additional laboratory test data for the 28-day follow-up period were available from 9,475 samples corresponding to 1,079 of the 1,579 patients in the HUVH cohort.

### Immunological Tests

The levels of CCL2, CXCL10, GM-CSF, IFN-alpha, IFN-gamma, IL-10, IL-12 p70, IL-13, IL-15, IL-17A, IL-1RA, IL-2, IL-4, IL-6, IL-7, TNF and granzyme B were measured in sera using the ELLA microfluidic platform (Biotechne<sup>®</sup>, Minneapolis, MN, USA); sCD163 levels were measured by a commercial ELISA (CD163 human kit, Thermo Fisher Societies, Waltham, MA, USA).

The Human Immune Phenotyping Consortium protocol (33, 34) was adapted for the study of COVID-19 patients. The antibodies used are shown in **Table S2**. Blood was collected in EDTA vacutainer tubes (BD-Plymouth, UK) and processed within 4 hours. Lymphocytes were selected by CD45 and SSC including  $10^5$  cells in the gate. In samples with marked lymphopenia a lower number were selected. Cells were analyzed in a NAVIOS EX flow cytometer (Beckman Coulter). Data were analyzed with Kaluza Beckman Software v.2.1. Absolute values were generated by loading counts from the hematological analyzer (XN-2000; Sysmex, Japan) parallel sample analysis.

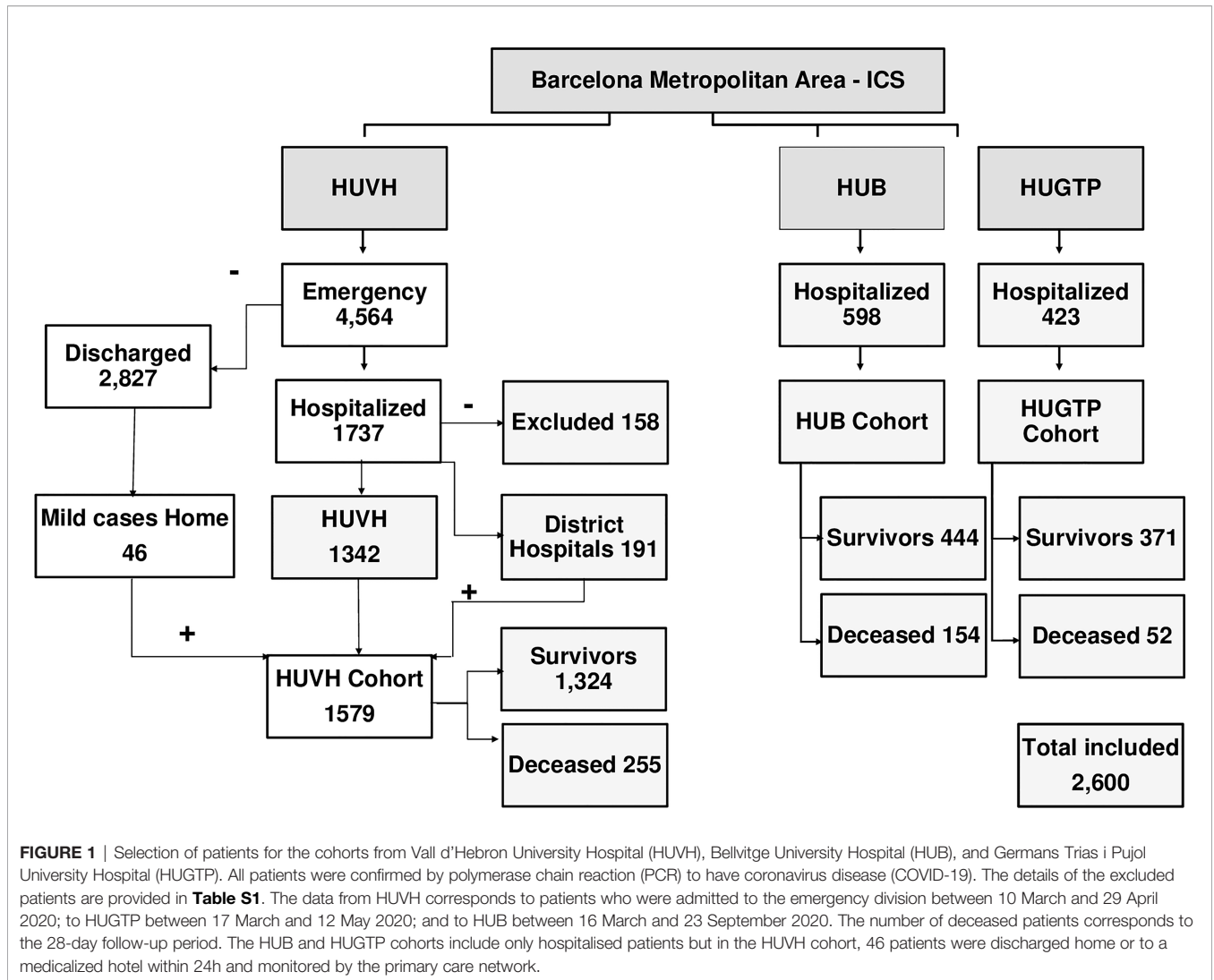
### Statistical Analysis

Categorical variables were summarized as frequencies and proportions and continuous variables as means, standard deviations, and 95% confidence intervals (CIs) or medians and interquartile ranges (IQRs), depending on their distribution. Pairwise comparisons used the Mann-Whitney U-test and Kruskal-Wallis test, adjusted for the false-discovery rate (FDR) using the Benjamini and Hochberg, or corrected by the Bonferroni method where indicated. C-reactive protein (CRP), IL-6, ferritin, and D-dimer values were logarithmically transformed. A threshold of 30% of laboratory missing data was used as the exclusion criteria for data analyses. The initial

**TABLE 1** | Summary of the clinical and demographic features of HUVH cohort vs outcome.

	Survivors vs deceased				Non-severe vs severe			
	Patients n (%)	Survivors n (%)	Deceased n (%)	p-value	Non-severe n (%)	Severe n (%)	p-value	
<b>All</b>	1,579 (100)	1324 (83.9)	255 (16.1)		1040 (63.8)	539 (34.1)		
<b>Female</b>	699 (44.3)	592 (44.7)	107 (42.0)	0.449	491 (47.2)	208 (38.6)	<b>0.001</b>	
<b>Male</b>	880 (55.7)	732 (55.3)	148 (58.0)		549 (52.8)	331 (61.4)		
<b>ICU</b>	236 (14.9)	203 (15.3)	33 (13.9)	0.4	1 (0.1)	235 (43.6)	<b>1.612E-126</b>	
	Median (IQR)	Median (IQR)	Median (IQR)		Median (IQR)	Median (IQR)		
<b>Age, years</b>	62 (50–75)	57 (48–70)	82 (74–87)	<b>7.26E-81</b>	58 (47–71)	70 (54–82)	<b>2.4872E-29</b>	
<b>DFSO</b>	7 (4–9)	7 (5–10)	5 (2–7)	<b>9.40E-19</b>	7 (5–10)	6 (3–8)	<b>2.9561E-14</b>	
<b>LOS</b>	7 (2–20)	7 (2–24)	7 (4–11)	0.4226	5 (2–10)	14 (6–36)	<b>1.5748E-44</b>	
<b>Disease duration, days</b>	15.0 (10–28)	15 (10–34)	12 (9–18)	<b>4.45E-11</b>	13 (9–21)	22 (11–43)	<b>1.4952E-17</b>	
<b>Clinical Presentation</b>	n (%)	n (%)	n (%)		n (%)	n (%)		
<b>General</b>	Fever	1314 (83.2)	1132 (85.4)	199 (75.3)	0.040	886 (85.2)	438 (81.3)	0.051
<b>Respiratory</b>	Upper respiratory symptoms (only)	94 (5.9)	85 (6.5)	9 (3.4)	0.063	69 (6.5)	25 (4.6)	0.118
	Lower respiratory symptoms	1351 (85.6)	1148 (86.7)	203 (79.6)	0.020	892 (85.8)	459 (85.2)	0.763
	Pneumonia	1524 (96.5)	1271 (96.0)	253 (99.2)	0.008	989 (95.1)	535 (99.3)	<b>3.62E-06</b>
<b>Digestive</b>	All	491 (31.1)	440 (33.2)	51 (20.0)	1.182E-05	353 (33.9)	138 (25.6)	<b>7.11E-04</b>
<b>Comorbidities</b>	n (%)	n (%)	n (%)		n (%)	n (%)		
	Cardiovascular & hypertension	712 (45.1)	508 (38.4)	204 (80.0)	<b>8.534E-37</b>	394 (37.9)	318 (59.0)	<b>1.463E-15</b>
	Chronic lung disease	278 (17.6)	198 (15.0)	80 (31.4)	<b>5.134E-09</b>	145 (13.9)	133 (24.7)	<b>2.143E-07</b>
	Diabetes	293 (1850.0)	223 (16.8)	70 (28.3)	<b>1.90E-05</b>	170 (16.3)	123 (22.8)	<b>0.002</b>
	Neurological disease	227 (14.4)	156 (11.8)	71 (27.8)	<b>1.29E-09</b>	121 (11.6)	106 (19.7)	<b>2.89E-05</b>
	Chronic kidney disease	134 (8.5)	79 (6)	55 (21.6)	<b>1.03E-13</b>	55 (5.3)	79 (14.7)	<b>9.101E-10</b>
	Active non-terminal malignancy	113 (7.2)	62 (4.7)	51 (20.0)	<b>1.10E-15</b>	41 (3.9)	72 (13.4)	<b>4.197E-11</b>
	Obesity	261 (16.5)	227 (17.3)	34 (12.8)	0.85	145 (13.9)	116 (21.5)	<b>2.00E-04</b>
	Chronic liver disease	61 (3.9)	48 (3.7)	13 (4.9)	0.139	37 (3.6)	24 (4.5)	0.409
<b>Comorbidity index*</b>								
	1 (0-2)	2 (1-3)	2 (1-3)	<b>2.2961E-38</b>	1 (0-2)	2 (1-3)	<b>1.0118E-26</b>	

\*The breakdown of patients by comorbidity index is in **Table S4**. Exact p-values from the Mann–Whitney U test, Significance should be considered for  $p \leq 0.001$  after Bonferroni. F, female; M, male; DFSD, days from symptom onset; LOS, length of stay; significant p values in bold.



**FIGURE 1** | Selection of patients for the cohorts from Vall d'Hebron University Hospital (HUVH), Bellvitge University Hospital (HUB), and Germans Trias i Pujol University Hospital (HUGTP). All patients were confirmed by polymerase chain reaction (PCR) to have coronavirus disease (COVID-19). The details of the excluded patients are provided in **Table S1**. The data from HUVH corresponds to patients who were admitted to the emergency division between 10 March and 29 April 2020; to HUGTP between 17 March and 12 May 2020; and to HUB between 16 March and 23 September 2020. The number of deceased patients corresponds to the 28-day follow-up period. The HUB and HUGTP cohorts include only hospitalised patients but in the HUVH cohort, 46 patients were discharged home or to a medicalized hotel within 24h and monitored by the primary care network.

oxygen saturation to fraction of inspired oxygen ratio (SpO<sub>2</sub>/FiO<sub>2</sub>) was available for a subset of 827 patients. The data from these patients were either analyzed separately, or when this parameter was included in a general analysis, this was indicated. Data from treatments were available in 981 patients with comparable clinical and demographic features as patients in severity categories moderate, severe, and deceased of the HUVH cohort (**Table S3**).

Bivariable logistic regression was used to calculate the age-adjusted odd ratios (OR) and effect size (Z score) of each variable. Multivariable logistic regression was used to calculate the predictive power of different combinations of variables. Correlation among variables was analyzed using the non-parametric Spearman test. For analysis of follow-up data of the HUVH cohort, locally weighted smoothing (LOESS) was applied to clinical laboratory variables to visualize the relationship between the mean and CI of each variable, time and 28-day outcome, as described in 4. To assess the performance of each clinical laboratory test, the receiver-operating characteristic (ROC) curve and the corresponding area under the

curve (AUC) values were calculated, using age as a variable for comparison. In addition, random forest simulation, as machine learning method, and principal component analysis (PCA) were performed to further compare the influence of the laboratory and clinical variables on the outcomes in each hospital dataset.

Statistical tests were 2-sided and used a significance threshold of at least  $p < 0.05$ . R, version 4.1.0 (The R Foundation for Statistical Computing, Vienna, Austria) and Prism 9<sup>®</sup> (GraphPad, San Diego, CA, USA) packages were used for all analyses. Statistical analysis was conducted by the Statistics and Bioinformatics Unit (UEB), Vall d'Hebron Hospital Research Institute, and by co-authors PC-E and RP-B under the supervision of the UEB.

## RESULTS

### Overall Clinical Features of HUVH Cohort

The HUVH cohort included 1,579 PCR-confirmed COVID-19 patients with a median age of 62 years (IQR: 50–75 years), of

whom 255 (16.1%) died during the first 28 days after hospitalization (**Figure 2A**). Eight hundred eighty (55.7%) patients were male. The proportion of males was higher than females (58.0%) among the deceased patients and this proportion of males was significantly higher than their proportion in the Barcelona metropolitan area at the time (47.5% male,  $p < 0.001$ , (35)). A total of 236 (14.9%) patients were admitted to the ICU with a 28-day case fatality rate of 13.9% for this subgroup (36).

The presenting symptoms are shown in **Table 1**. Cardiovascular and/or hypertension, chronic lung disease, diabetes, neurological disease, chronic kidney disease, and active non-terminal malignancy were significantly associated to decreased 28-day survival, but not chronic liver disease nor obesity. Of note, digestive symptoms were more frequent in survivors (31.1% vs. 20.0%,  $p < 0.001$ ). The comorbidity index was significantly higher in deceased patients and patients with severe disease than in survivors and patients with non-severe disease. Each comorbidity added 10% mortality risk up to an index of 4 (**Table S4**).

The distribution of disease severity was as follows, 71 (4.5%), 969 (61.4%), 284 (17.9%), and 255 (16.1%) in the mild, moderate, severe, and deceased categories, respectively. Among the mild patients, 46 were discharged within 24h. The age of patients increased with disease severity category, except between the moderate and severe disease groups (**Figure 2B** and **Table S4**). The LOS increased with disease severity for the three initial disease severity categories but was shorter among the deceased because 24.9% of obits occurred during the initial 4 days of hospitalization (**Figure 2C**). The median disease duration was 18

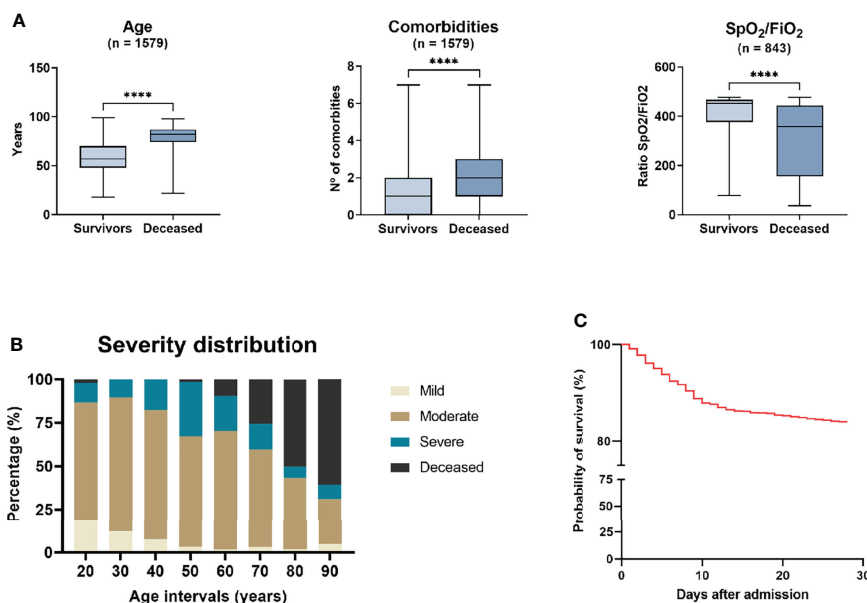
days (IQR: 10–18 days) and was progressively longer with increasing disease severity. Age had a strong effect on mortality: for patients in the age groups 50–59, 60–69, 70–79, 80–89 and >90 years, with 28-day case fatality rates of 1.82%, 10.9%, 26.4%, 49.7% and 60.6% respectively (**Table S5**).

The treatment was available in 981 cases in the exploratory cohort and can be consulted in **Table S3**. Most patients received hydroxychloroquine (90.5%) and antivirals (87.7%) following the recommendations of treatments at that stage, but a proportion also received the drugs that were later found to be effective such corticosteroids (18.3%) and Tocilizumab (25.1%).

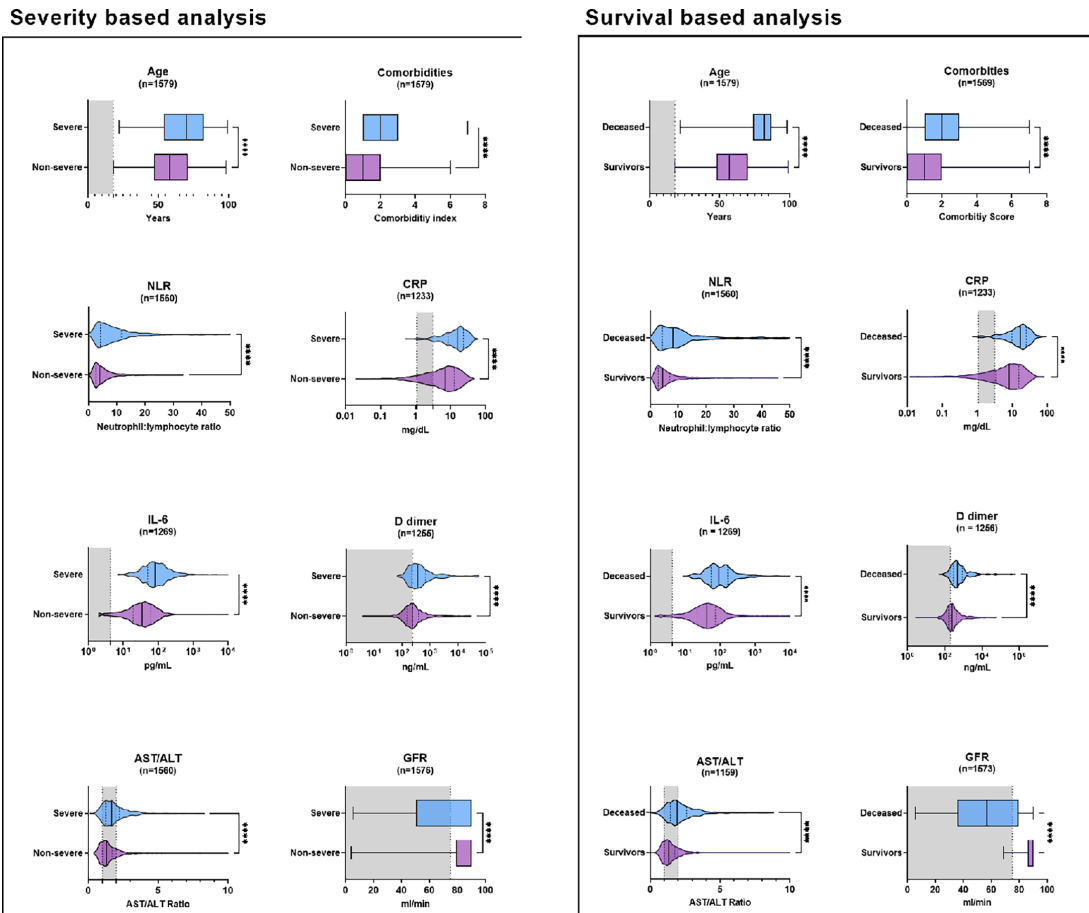
In the dichotomous disease severity grouping, there were 1,040 and 539 patients in the non-severe and severe categories, respectively. Deceased patients accounted for 43.7% of the severe category. The disease severity was significantly associated with age, DFSO, LOS, disease duration, and comorbidities other than chronic liver disease ( $p = 2.4 \cdot 10^{-29}$ ,  $p = 2.9 \cdot 10^{-14}$ ,  $p = 1.5 \cdot 10^{-44}$ ,  $p = 1.4 \cdot 10^{-17}$  respectively). Disease severity was greater in males than in females, but after adjusting for multiple comparisons the statistical significance was moderate compared with the other significant associations (exact  $p = 0.001$ , after Bonferroni's correction  $p = 0.03$ ) (**Table 1**).

## Predictive Power of Current Clinical Laboratory Tests

The exploratory statistical analysis of the HUVH cohort revealed strong association of 22 of the 30 variables with 28-day outcomes (**Figure 3** and **Tables 2** and **S6**). However, the analysis of the



**FIGURE 2** | The structure and outcomes of the Vall d'Hebron University Hospital cohort. **(A)** Left panel, age distribution of the survivors and that of the deceased is markedly different (median [IQR]: 62 years [50–75 years] vs. 82 years [74–87 years],  $p < 0.001$ ) as are comorbidities (central panel) and SpO<sub>2</sub>/FiO<sub>2</sub> (right panel). **(B)** Distribution of the patients in the HUVH cohort among the four severity categories, based on the World Health Organization criteria (described in the Material and Methods section). The number of patients in the mild category is small ( $n = 71$ ) as only patients with bilateral pneumonia or severe associated pathologies were hospitalised during this period of the pandemic. **(C)** Survival after admission: this graph highlights mortality during the initial 10 days, with a high number of patients older than 80 years dying in the initial 3–4 days (see text “Overall Clinical Features of HUVH cohort”). HUVH, Vall d'Hebron University Hospital \*\*\*\* $p < 0.0001$ .



**FIGURE 3** | Univariate comparisons of a selection of clinical laboratory-derived variables at admission and 28-days survival for the survival/decease and non-severe, severe outcomes in the Vall d’Hebron University Hospital cohort. n, number of cases plotted; NLR, neutrophil-to-lymphocyte ratio; CRP, C-reactive protein; AST, aspartate aminotransferase; ALT, alanine aminotransferase; GFR, glomerular filtration rate. \*\*\*\*p < 0.0001. When non-significant, the numerical p-values are given. The exact p-values are given in **Table 2**. The distribution of age and GFR are markedly different in both the severity and survival analysis.

classification tables generated by iterative logistic regression analysis using different sets of variables showed that, despite good ROC curves (see below), their power in predicting poor outcomes, either decease or severe disease, was under the 60% (**Table 3** and **Supplementary Tables** in excel format “Repeated Multiple Logistic Regression”). Of concern, prediction was very dependent on age (**Table 3**). Laboratory variables by themselves -without SpO<sub>2</sub>/FiO<sub>2</sub>- are poor predictors specially of decease (34.78% of correctly classified patients). Analyses with a reduced set of eight variables i.e., age, comorbidities, SpO<sub>2</sub>/FiO<sub>2</sub>, NLR, CRP, AST/ALT, fibrinogen and GFR, gave similar results as those using all variables, confirming the redundancy of many variables. Machine learning analysis using random forest confirmed this low prediction power of laboratory variables on their own. See below “Selection of a core panel of clinical laboratory tests”.

### Improving Interpretation of Current Clinical Laboratory Tests

The white blood cell differential counts showed marked imbalance due to an approximately 250% reduction in the lymphocyte count

and a 20–30% increase in the neutrophil count. At the individual level, the reduction of lymphocytes was disproportionate to the increase in neutrophils.

The Acute Phase Reactants had a broad range of variation e.g., >10,000 and 50-fold for IL-6 and CRP, respectively, and in most patients the values were out of the normal range, while the aspartate aminotransferase/alanine aminotransferase (AST/ALT) ratio and kidney function test results were only moderately altered and often remained within the normal range.

Multiple correlation (**Figure 4**), multivariable logistic regression analyses (**Table 3**), age-adjusted logistic regression (**Table 4**), and examining their respective shifts from the normal range (**Table S7**), suggested that these variables could be classified into three broad categories, clinic-demographic (CD), including age, sex and the comorbidity index; inflammation related biomarkers (IFRB) including blood cell counts, levels of APRs, and coagulation factors; and organ damage-related biomarkers (ODRB), including liver and kidney function tests and SpO<sub>2</sub>/

**TABLE 2 |** Pairwise comparison of biomarkers for disease and severity outcomes, HUVH cohort.

Patients,	Total (n=1,579)	Survivors (n=1,324)	Non-survivors (n=255)	p-value (exact)	Non-Severe (n = 1040)	Severe and deceased (n = 539)	p-value (exact)
Age, years, median and IQR	62 (50–75)	57 (48–70)	82 (74–87)	7.26E-81	58 (47–71)	70 (54–82)	2.49E-29
Comorbidities	1 (0–2)	2 (1–3)	2 (1–3)	2.30E-38	1 (0–2)	2 (1–3)	1.0118E-26
<b>INFLAMMATION RELATED BIOMARKERS (IFRB)</b>							
<b>Blood (normal range)</b>							
Hb (12–15 g/dL)	13.5 (12.3–14.5)	13.7 (10.7–11.9)	12.6 (11.4–13.8)	4.95E-15	13.7 (12.5–14.6)	13.1 (12.0–14.3)	5.64E-09
WBC (4–11 10 <sup>9</sup> /L)	6.5 (5.0–8.8)	6.5 (5.0–8.2)	7.5 (5.32–10)	1.51E-05	6.36 (4.95–8.10)	7.39 (5.29–10.4)	1.26E-10
Neutrophils, % (40–80)	76.1 (68–83.2)	74.8 (68.3–81.0)	82.9 (75.4–87.9)	1.07E-20	73.3 (65.9–79.8)	82.4 (74.3–87.6)	6.07E-39
Neutrophils (2–7 10 <sup>9</sup> /L)	4.8 (3.5–6.7)	4.7 (3.4–7.6)	6.1 (3.9–8.6)	7.18E-10	4.56 (3.33–6.23)	5.92 (4.01–8.68)	1.63E-19
Lymphocytes, % (20–50)	16 (10.5–23)	17 (12–24)	10 (7.2–17.0)	1.07E-23	18.1 (12.8–24.8)	11.6 (7.50–18.2)	8.34E-41
Lymphocytes (1.2–3.5 10 <sup>9</sup> /L)	1 (0.7–1.4)	1.1 (0.8–1.4)	0.7 (0.6–1.0)	3.69E-22	1.11 (0.82–1.50)	0.85 (0.60)	1.80E-28
Monocytes, % (2–10)	6.7 (4.8–8.8)	6.8 (5.0–8.8)	5.4 (3.6–7.80)	1.01E-10	7.20 (5.50–9.20)	5.40 (3.70–7.80)	1.92E-24
Monocytes (0.1–1 10 <sup>9</sup> /L)	0.43 (0.30–0.59)	0.44 (0.31–0.59)	0.39 (0.28–0.56)	0.013	0.45 (0.33–0.61)	0.39 (0.28–0.58)	1.02E-05
Eosinophils, % (0.0–5.0)	0.0 (0–0.3)	0.00 (0.00–0.10)	0 (0.00–0.00)	4.40E-07	0.1 (0.00–0.40)	0.00 (0.00–0.10)	1.87E-14
Eosinophils (0.0–0.5 10 <sup>9</sup> /L)	0.00 (0.00–0.01)	0.0 (0–0.01)	0 (0.00–0.00)	0.006	0.0 (0–0.03)	0 (0.00–0.01)	9.71E-12
Basophils (0.0–0.2 E9/L)	0 (0.01–0.03)	0.0 (0.01–0.03)	0.02 (0.01–0.03)	0.454	0.02 (0.01–0.02)	0.02 (0.01–0.03)	0.1591
Neutrophil–Lymphocyte ratio	4.8 (3.0–7.0)	4.4 (3.2–6.7)	7.7 (4.3–12.2)	1.39E-21	4.07 (2.68–4.21)	7.07 (4.21–11.7)	4.71E-39
Platelets (140–400 10 <sup>9</sup> /L)	197 (154–251)	202 (170–286)	174 (133–227)	2.87E-07	292 (159–254)	190 (143–190)	2.63E-04
<b>APR and related parameters</b>							
CRP (0.03–0.5 mg/dL)	8.9 (3.8–16.6)	8.1 (3.8–15.5)	17.9 (10.2–24.5)	2.05E-19	7.07 (2.57–12.58)	15.8 (8.51–23.44)	5.99E-43
IL-6 (0.0–4.3 pg/mL)	45.1 (23.6–80.0)	41.41 (24.7–85.9)	90.5 (55.3–162.8)	1.88E-24	34.6 (19.0–61.65)	81.2 (50.1–138.0)	1.01E-55
Ferritin (25–400 ng/mL)	539 (282.5–1011.5)	527 (155.5–709.5)	671 (355–1153)	0.04	467 (251.–891.2)	724 (426.–1348.)	1.06E-12
<b>Coagulation</b>							
Fibrinogen (2.39–6.1 g/L)	5.1 (4.4–6)	5.2 (4.4–5.7)	4.9 (4.2–5.9)	0.04	5.06 (4.42–5.86)	5.31 (4.45–6.15)	0.0129
D-dimer (0–243 ng/mL)	263 (168–463.5)	248.5 (197.8–591.0)	477 (292.5–860.8)	4.65E-16	234 (151–389)	371 (223–692)	3.80E-20
Prothrombin time, INR (0.7–1.3)	1.1 (1.0–1.2)	1.1 (1.0–1.2)	1.1 (1.1–1.3)	9.32E-08	1.09 (1.02–1.17)	1.11 (1.04–1.23)	1.25E-05
<b>ORGAN DAMAGE RELATED BIOMARKERS (ODRB)</b>							
SpO <sub>2</sub> /FiO <sub>2</sub>	448 (354–462)	452 (377–465)	358 (156–443)	5.55E-22	457 (438–467)	369 (230–448)	8.58E-44
<b>Liver function tests</b>							
AST (12–50 IU/L)	40 (30–60)	39 (26.0–49.5)	44.5 (31–68)	0.01	38 (28–55)	45 (33–68)	6.55E-11
AST/ALT (<1.5)	1.39 (1.06–1.88)	1.3 (1.0–1.8)	1.9 (1.4–2.6)	6.06E-31	1.3 (1–1.71)	1.67 (1.24–2.21)	2.97E-24
Bilirubin, Direct (0.1–0.57 mg/dL)	0.30 (0.24–0.38)	0.30 (0.24–0.37)	0.35 (0.27–0.46)	8.37E-05	0.29 (0.24–0.36)	0.32 (0.26–0.43)	1.34E-05
Bilirubin, Total (0.3–1.2 mg/dL)	0.57 (0.45–0.74)	0.57 (0.44–0.73)	0.63 (0.47–0.85)	0.03	0.56 (0.45–0.73)	0.58 (0.44–0.81)	0.185
<b>Kidney function tests</b>							
Urea (17–42 mg/dL)	35 (25–51)	32 (24.0–55.0)	58 (42–87)	8.77E-47	31 (24–44)	46 (31.8–72.3)	2.23E-31
Creatinine (0.67 - 1.17 mg/dL)	0.80 (0.60–0.97)	0.79 (0.65–0.94)	1.01 (0.78–1.36)	2.20E-20	0.79 (0.64–0.95)	0.92 (0.74–1.29)	2.48E-23
GFR (>75 mL/min/1.73m <sup>2</sup> )	88.5 (67.8–90.0)	90.0 (76.4–90.0)	56.9 (35.9–79.5)	2.37E-101	90 (78.9–90)	76.3 (50.3–90)	1.42E-37

AST, Aspartic Amino Transferase; ALT, Alanine Amino Transferase; CRP; C Reactive Protein; GFR, Glomerular Filtration Rate; Hb, Hemoglobin; NLR, Neutrophil Lymphocyte Ratio; SpO<sub>2</sub>/FiO<sub>2</sub>, Oxygen saturation to fraction of inspired oxygen ratio; WBC, White Blood cell Count.



**TABLE 3** | Classification tables from multiple logistic regression including different sets of variables for survival vs decrease or severe vs non-severe as outcome.**Predicted outcome, 19 clinical and laboratory variables\* for survival versus decrease**

Classification table	Predicted survival	Predicted decrease	Total	% Correctly classified
Observed Survival	357	8	365	97.81
Observed Decrease	21	25	46	54.35
Total	378	33	411	92.94
<b>Predicted outcome, 19 clinical and laboratory variables* severe versus non-severe</b>				
Classification table	Predicted non-severe	Predicted severe	Total	% Correctly classified
Observed non-severe	244	26	270	90.37
Observed severe	64	77	141	54.61
Total	308	103	411	78.10
<b>Predicted outcome, 16 non-clinical variables** for survival versus decrease</b>				
Classification table	Predicted survival	Predicted decrease	Total	% Correctly classified
Observed survival	356	9	365	97.53
Observed decrease	30	16	46	34.78
Total	386	25	411	90.51
<b>Predicted outcome, 16 non-clinical variables** for severe versus non-severe</b>				
Classification table	Predicted non-severe	Predicted severe	Total	% Correctly classified
Observed non-severe	245	25	270	90.74
Observed severe	59	82	141	58.16
Total	304	107	411	79.56
<b>Predicted outcome, 15 non-clinical variables for survival versus decrease (no SpO2/FiO2).***</b>				
Classification table	Predicted survival	Predicted decrease	Total	% Correctly classified
Observed survival	897	9	906	99.01
Observed decrease	68	20	88	22.73
Total	965	29	994	92.25
<b>Predicted outcome, 15 non-clinical variables for severe versus non-severe (no SpO2/FiO2)***</b>				
Classification table	Predicted non-severe	Predicted severe	Total	% Correctly classified
Observed non-severe	691	49	740	93.38
Observed severe	162	92	254	36.22
Total	853	141	994	78.77

\*The 19 variables included were age, gender, comorbidity index, SpO2/FiO2, Hb, Neutrophil %, Lymph %, monocyte %, eosinophils %, NLR, Platelets, CRP, IL-6, D-dimer, ferritin, fibrinogen, prothrombin time INR, AST/ALT ratio and GFR. \*\* The 16 variables included were the same minus for age, sex, and comorbidities. \*\*\* The 15 variables were the same minus for age, sex, comorbidities and, SpO2/FiO2.

FiO2. These analyses also revealed that the neutrophil-lymphocyte ratio (NLR) and the AST/ALT ratio captured most of the predictive value of lymphocyte and neutrophils variations and of liver function test variations, respectively, and that SpO2/FiO2 conveyed much of the predictive power of the ODRBs (see supplementary text “Sequence of statistical biomarker analysis”).

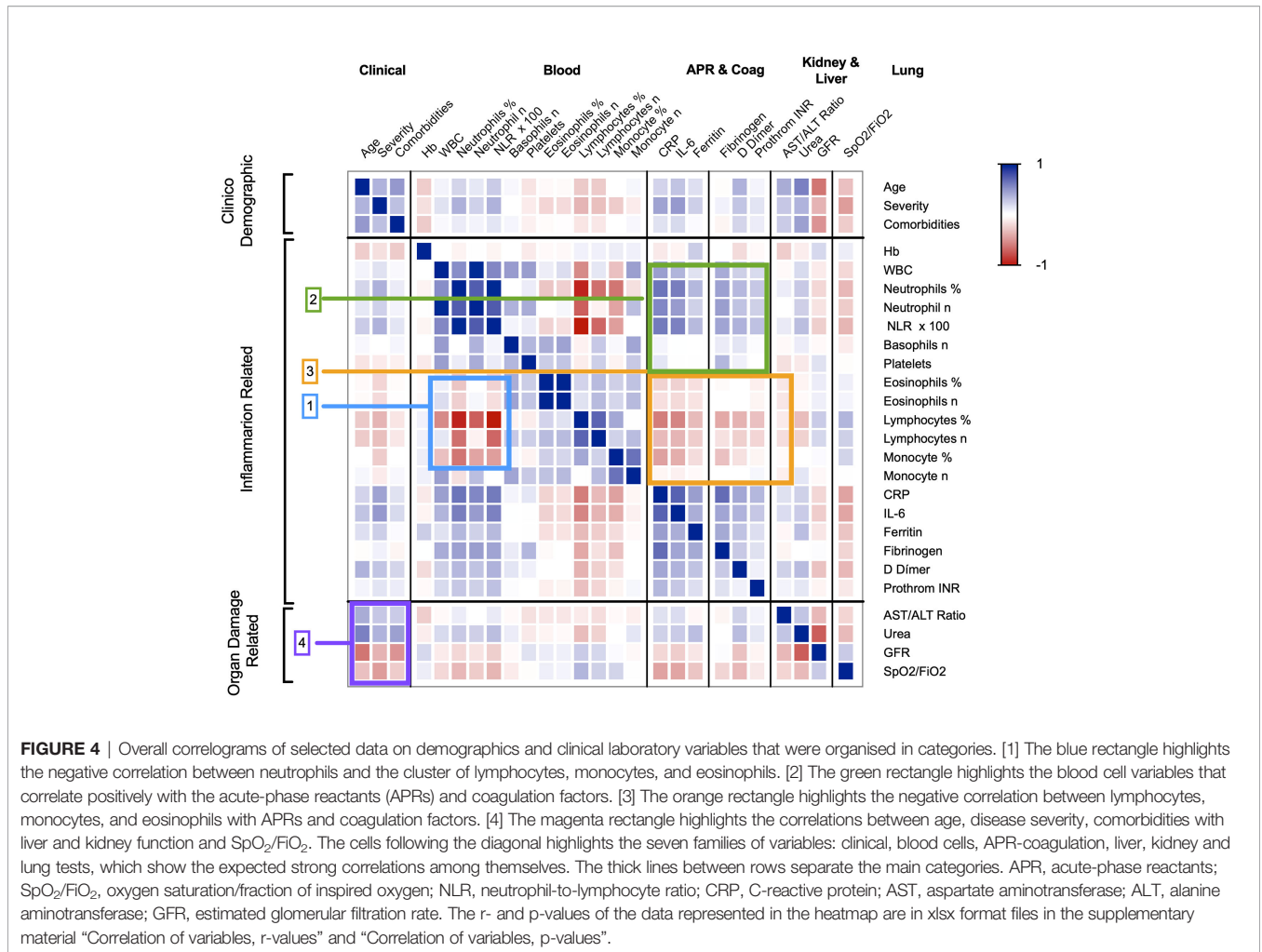
Applying this classification to assess clinical parameters and test performance using ROC curve analysis (Table 5), it emerged that the CD and ODRB performed better at predicting survival, while IFRB performed better at predicting disease severity (Figure 5A and Table 3). The strong influence of age was more evident in the analysis of survival curves (Figure 5S) using Youden index for the cut-off values (Table 5); the hazard ratio (HR) for patients age under or above 60 years was 32, while the next highest HR was for GFR 9.3 (Figure 5B). The predictors of disease severity in descending order were age, GFR, urea, IL-6, D-dimer, and comorbidities (Figure 5B). The predictive power of both the ODRB and IFRB variables was maintained in the age-adjusted logistic regression analysis (Table 4) but reduced when ROC analysis was stratified by age intervals (Table S8). The random forest simulation further confirmed that age was the single best predictor of outcome, and that the combination with all laboratory variables was only partially additive (Table S9).

## Predictive Power of Laboratory Variables During Hospitalization

The analysis of the 7,586-follow-up observations showed that association of biomarkers with survival varied during the 28 days of follow-up. The daily average curves of most IFRB for survivors and deceased remained separated during the first few days of hospitalization with maximum separation around day 5 (Figure 6). Interpretation of the values in patients with longer hospital stays was difficult due to the decreasing sample size and complications arising from medical interventions. The survival curves for ODRBs, GFRs and AST/ALT ratio maintained their separation for most of the follow-up period.

## Selection of a Core Panel of Clinical Laboratory Tests

At present in HUVH, as in many hospitals, approximately 30 clinical laboratory variables and SpO2/FiO2 are routinely measured in COVID-19 patients as part of the work-up on admission. Correlation analysis and multivariable logistic regression showed that these variables had a high level of multicollinearity which was confirmed by PCA and random forest simulation (Figure 3S and Table S9). Using iterative logistic regression analysis with different variable combinations, a reduced set of eight variables: age, comorbidity index, SpO2/FiO2, hemoglobin, NLR, CRP, AST/ALT



**FIGURE 4** | Overall correlograms of selected data on demographics and clinical laboratory variables that were organised in categories. [1] The blue rectangle highlights the negative correlation between neutrophils and the cluster of lymphocytes, monocytes, and eosinophils. [2] The green rectangle highlights the blood cell variables that correlate positively with the acute-phase reactants (APRs) and coagulation factors. [3] The orange rectangle highlights the negative correlation between lymphocytes, monocytes, and eosinophils with APRs and coagulation factors. [4] The magenta rectangle highlights the correlations between age, disease severity, comorbidities with liver and kidney function and SpO<sub>2</sub>/FiO<sub>2</sub>. The cells following the diagonal highlights the seven families of variables: clinical, blood cells, APR-coagulation, liver, kidney and lung tests, which show the expected strong correlations among themselves. The thick lines between rows separate the main categories. APR, acute-phase reactants; SpO<sub>2</sub>/FiO<sub>2</sub>, oxygen saturation/fraction of inspired oxygen; NLR, neutrophil-to-lymphocyte ratio; CRP, C-reactive protein; AST, aspartate aminotransferase; ALT, alanine aminotransferase; GFR, estimated glomerular filtration rate. The r- and p-values of the data represented in the heatmap are in xlsx format files in the supplementary material “Correlation of variables, r-values” and “Correlation of variables, p-values”.

**TABLE 4** | Bivariate age adjusted logistic regression for 28-days survival/decease and non-severe/severe outcomes.

Variables	28d decease outcome age adjusted					28 maximal severity age adjusted				
	OR	CI	Z value	Pr(> z )	Z value Rank	OR	CI	Z value	Pr(> z )	Z value Rank
IL-6 (pg/mL)	2.59	2.06-3.31	7.84	<0.001	1	12.24	8.24-18.56	12.10	<0.001	1
CRP (mg/dL)	3.20	2.38-4.41	7.40	<0.001	2	9.55	6.47-14.40	11.06	<0.001	2
SpO <sub>2</sub> /FiO <sub>2</sub> ratio	0.99	0.99-1.00	7.05	<0.001	3	0.99	0.98-0.99	10.17	0.001	4
Neutrophils (%)	1.06	1.04-1.08	6.38	<0.001	4	1.19	1.14-1.23	10.76	<0.001	3
NLR x 100	1.08	1.06-1.11	6.33	<0.001	5	1.13	1.10-1.16	9.87	0.001	5
Monocytes (%)	0.86	0.81-0.90	6.20	<0.001	6	0.86	0.83-0.89	7.89	<0.001	8
Neutrophils (10 <sup>9</sup> /L)	1.14	1.09-1.19	5.74	<0.001	7	1.19	1.14-1.23	8.86	<0.001	7
GFR (mL/1.73 m <sup>2</sup> )	0.98	0.97-0.99	5.44	<0.001	8	0.98	0.97-0.98	6.94	<0.001	11
Lymphocytes (%)	0.95	0.92-0.97	5.04	<0.001	9	1.03	1.03-1.04	9.79	<0.001	6
WBC (10 <sup>9</sup> /L)	1.11	1.06-1.16	4.82	<0.001	10	1.14	1.01-1.18	7.29	<0.001	9
AST/ALT ratio	1.49	1.26-1.76	4.74	<0.001	11	1.53	1.32-1.80	5.47	<0.002	13
D dimer (ng/mL)	1.51	1.26-1.83	4.35	<0.001	12	2.60	1.92-3.56	6.05	<0.001	12
Creatinine (mg/dL)	1.32	1.14-1.53	3.68	<0.001	13	1.39	1.20-1.65	4.02	<0.001	16
Lymphocytes (10 <sup>9</sup> /L)	0.51	0.35-0.73	3.61	<0.001	14	0.41	0.32-0.52	6.95	<0.001	10
Ferritin (ng/mL)	1.43	1.12-1.85	2.85	0.004	15	1.00	1.000-1.001	5.42	<0.001	14
Eosinophils (%)	0.63	0.45-0.85	2.79	0.005	16	0.62	0.49-0.76	4.35	<0.001	15
Hb (g/dL)	0.89	0.81-0.98	2.41	0.016	17	1.12	1.04-1.19	3.23	0.001	17
Eosinophils (10 <sup>9</sup> /L)	0.02	0.00-0.62	2.07	0.039	18	0.04	0.003-0.360	2.67	0.007	18
Monocytes (10 <sup>9</sup> /L)	0.72	0.45-1.07	NA	0.127	NA	0.74	0.51-1.04	1.66	0.097	20
Platelets (10 <sup>9</sup> /L)	1.00	1.00-1.00	NA	0.203	NA	1.00	0.997-1.000	1.80	0.070	19

AST, Aspartic Amino Transferase; ALT, Alanine Amino Transferase; CRP; C Reactive Protein; GFR, Glomerular Filtration Rate; Hb, Hemoglobin; NLR, Neutrophil Lymphocyte Ratio; NA, not applicable (Z values not directly comparable), WBC, White Blood cell Count.

**TABLE 5 |** ROC curve analysis as for clinical laboratory test performance comparison for survival/death and non-severe/severe outcomes.

Decease Outcome				
Variable	AUC	CI	p	YOUDEN for Hazard Ratios cut off
Age	0.87	0.85-0.89	0.001	>60.50
Comorbidities	0.75	0.72-0.78	5.95E-25	>1.50
GFR	0.80	0.77-0.83	2.45E-53	< 87.30
IL-6	0.77	0.73-0.81	5.24E-26	> 50.50
AST/ALT	0.73	0.69-0.77	6.08E-31	> 1.64
SpO2/FiO2	0.73	0.70-0.78	1.79E-43	< 439.50
CRP	0.73	0.70-0.78	1.44E-20	>11.13
D-dimer	0.73	0.69-0.77	7.42E-20	> 353.00
Creatinine	0.71	0.67-0.74	4.35E-25	> 1.12
Lymphocyte %	0.69	0.65-0.73	1.18E-21	< 12.05
NLR	0.69	0.65-0.73	1.33E-21	>6.85
Neutrophil %	0.69	0.65-0.73	1.61E-43	> 82.15
Hb	0.65	0.62-0.69	5.67E-09	< 13.45
Monocytes	0.63	0.59-0.67	5.05E-11	< 6.65
Prothrombin time (INR)	0.61	0.56-0.65	1.37E-07	> 1.21
Platelets	0.60	0.56-0.64	9.94E-07	< 162.50
Eosinophils %	0.59	0.55-0.62	1.32E-5	> 0.15
Ferritin	0.57	0.51-0.62	0.019	> 668.00
Severity outcome				
IL6	0.78	0.75-0.80	8.65E-56	NC
SpO2/FiO2	0.77	0.74-0.81	1.79E-43	NC
CRP	0.75	0.71-0.77	5.77E-43	NC
NLR	0.71	0.68-0.73	1.74E-41	NC
GFR	0.69	0.65-0.71	1.69E-33	NC
Age	0.67	0.64-0.70	2.55E-29	NC
D-dimer	0.67	0.63-0.69	2.63E-20	NC
Monocytes %	0.66	0.62-0.68	1.92E-24	NC
AST/ALT	0.66	0.62-0.68	2.97E-24	NC
Comorbidity	0.65	0.62-0.68	5.95E-25	NC
Ferritin	0.64	0.60-0.67	1.08E-12	NC
Eosinophils %	0.61	0.57-0.63	3.14E-12	NC
Hb	0.59	0.55-0.62	5.67E-09	NC
Monocytes n	0.57	0.53-0.59	1.02E-05	NC

AST, Aspartic Amino Transferase; ALT, Alanine Amino Transferase; CRP; C Reactive Protein; GFR, Glomerular Filtration Rate; Hb, Hemoglobin; NLR, Neutrophil Lymphocyte Ratio; NC, not calculated as HR applies to mortality.

ratio, and GFR, were found to capture the best prediction power (see supplementary material, “Sequence of statistical biomarkers analyses: complexity reduction” and tables “Repeated multivariable logistic regression deceased” and “Repeated multivariable logistic binary severity” among the supplementary excel tables). As age and comorbidities are non-time-varying, only six of the eight variables are required for clinical management. These results apply to the cohort but do not imply that IL-6, ferritin, lactate dehydrogenase, triglycerides, procalcitonin, D-dimer, and coagulation tests do not provide valuable information in clinical practice depending on the context.

## Comparison With the Two Validation Cohorts

The comparison among the three cohorts confirmed the prognostic power of the main IFRB and ODRB variables, even though the statistical ranking of their positions showed small variations between cohorts (Table 6, and Figures 5C, D). In addition, biomarker performance as predictors of outcome was

maintained in the three cohorts in the random forest simulations (Table S10).

## Prediction Performance of Immunological Tests

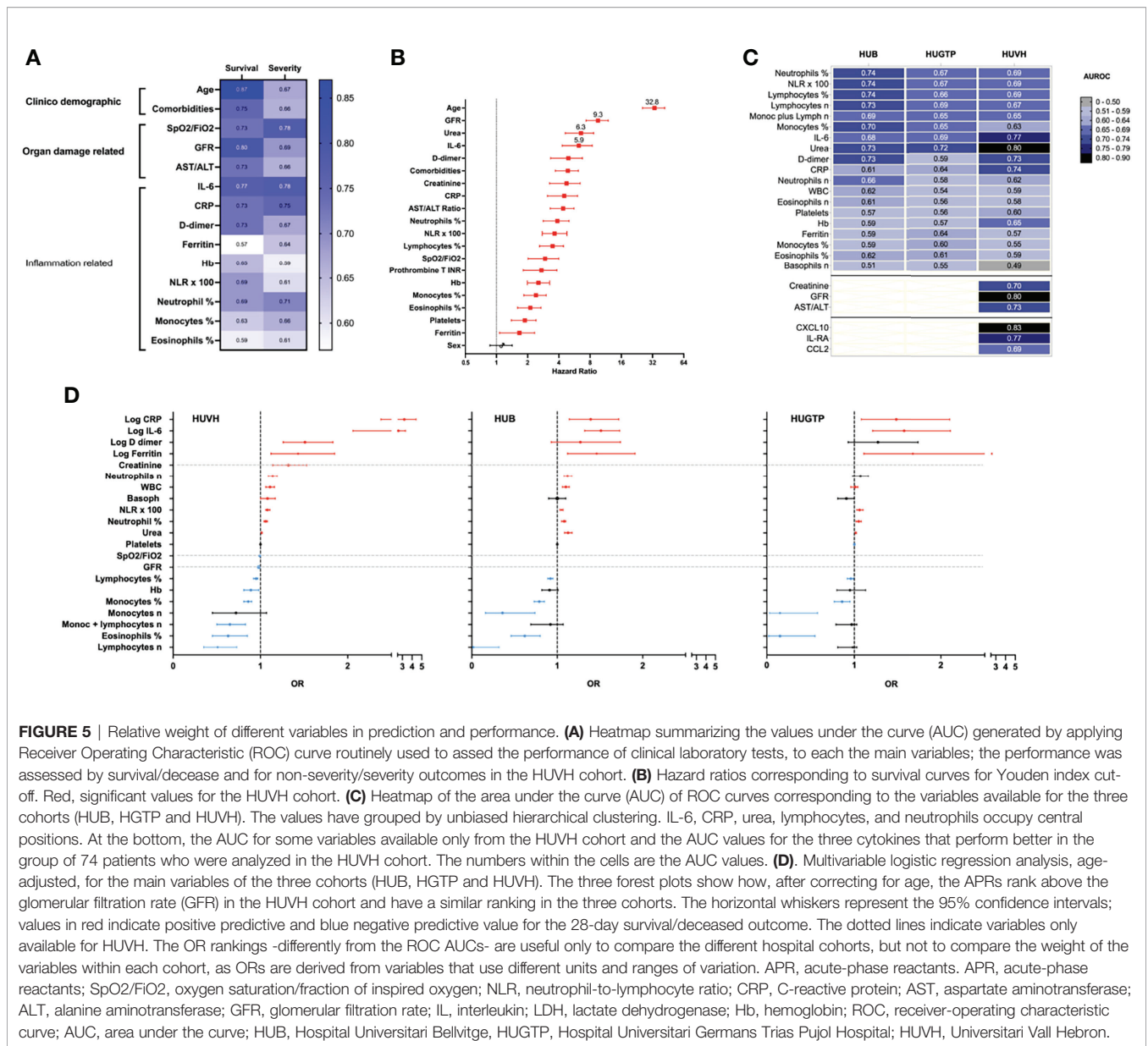
Despite the limited size of the group analyzed in the cytokines pilot study (n=74, Table S10), CXCL10 had the best ROC curve (AUC=0.83,  $p=2.3 \cdot 10^{-6}$ ) of all variables including age, IFRB and ODRB, and performed better than any of the other variables considered. IL1RA and CCL2 with AUCs of 0.77,  $p=0.002$ , and 0.69,  $p=0.006$  respectively also showed promise as biomarkers (Table 7 and Figures 5C, 7). IL-6, also an immunological test, measured both as part of the routine clinical tests (n=1269) and in this smaller group (n=74), gave the similar AUCs of 0.77,  $p=5.2 \cdot 10^{-26}$  and 0.76,  $p=1.9 \cdot 10^{-4}$  in the two set of measurements respectively.

The immune phenotype was analyzed in 41 patients (Table S11). There was a steep reduction in the size of all T-cell subsets, which was more marked for CD8 effector and memory cells, and an increase in activation markers that was like the pattern observed in other time-series analyses (25, 37), revealing a deep disturbance of the immune response in severely ill patients (see Expanded phenotype analysis in supplementary). Naïve T cells seemed associated to higher mortality (Figures 8 and 11S).

## DISCUSSION

The analyses of our COVID-19 patients series expose the limitations of the clinical laboratory tests currently applied to assess the prognosis of patients with COVID-19 but also show that they can be better interpreted if grouped into categories that reflect the two main biological processes that are measured, i.e., inflammation and organ damage. Since their prognostic limitations are due to redundancy, clinical laboratory panels for COVID-19 could be simplified, but additional biomarkers with real independent additional predictive power are urgently needed. This study also exposes the lack of tests for early prediction of the immune response to SARS-CoV-2. Such tests could provide critical non-redundant information required for clinical management during the early clinical course. The results of the reported pilot study using a selection of robust immunological tests in use in other areas of clinical immunology (primary immunodeficiencies, transplantation, etc.), indicates that such tests exist, and their value should be systematically investigated.

Beyond this central message, the findings can be summarized as follows: 1) The three cohorts confirmed the strong association of: SpO2/FiO2, neutrophilia, lymphopenia, acute phase reactants, coagulation factors, kidney function and the AST/ALT ratio with disease outcome. 2) There was a high level of collinearity (redundancy) among the different laboratory variables, which explains their disappointing prediction power when combined. 3) After reducing overall redundancy, the best combination of variables was age, comorbidity index, SpO2/FiO2, NLR, CRP, AST/ALT ratio, fibrinogen, and GFR. 4) The classification of biomarkers into inflammation and organ-



**FIGURE 5 |** Relative weight of different variables in prediction and performance. **(A)** Heatmap summarizing the values under the curve (AUC) generated by applying Receiver Operating Characteristic (ROC) curve routinely used to assess the performance of clinical laboratory tests, to each the main variables; the performance was assessed by survival/death and for non-severity/severity outcomes in the HUVH cohort. **(B)** Hazard ratios corresponding to survival curves for Youden index cut-off. Red, significant values for the HUVH cohort. **(C)** Heatmap of the area under the curve (AUC) of ROC curves corresponding to the variables available for the three cohorts (HUB, HGTP and HUVH). The values have grouped by unbiased hierarchical clustering. IL-6, CRP, urea, lymphocytes, and neutrophils occupy central positions. At the bottom, the AUC for some variables available only for the HUVH cohort and the AUC values for the three cytokines that perform better in the group of 74 patients who were analyzed in the HUVH cohort. The numbers within the cells are the AUC values. **(D)** Multivariable logistic regression analysis, age-adjusted, for the main variables of the three cohorts (HUB, HGTP and HUVH). The three forest plots show how, after correcting for age, the APRs rank above the glomerular filtration rate (GFR) in the HUVH cohort and have a similar ranking in the three cohorts. The horizontal whiskers represent the 95% confidence intervals; values in red indicate positive predictive and blue negative predictive value for the 28-day survival/deceased outcome. The dotted lines indicate variables only available for HUVH. The OR rankings - differently from the ROC AUCs - are useful only to compare the different hospital cohorts, but not to compare the weight of the variables within each cohort, as ORs are derived from variables that use different units and ranges of variation. APR, acute-phase reactants. APR, acute-phase reactants; SpO2/FiO2, oxygen saturation/fraction of inspired oxygen; NLR, neutrophil-to-lymphocyte ratio; CRP, C-reactive protein; AST, aspartate aminotransferase; ALT, alanine aminotransferase; GFR, glomerular filtration rate; IL, interleukin; LDH, lactate dehydrogenase; Hb, hemoglobin; ROC, receiver-operating characteristic curve; AUC, area under the curve; HUB, Hospital Universitari Bellvitge, HUGTP, Hospital Universitari Germans Trias Pujol Hospital; HUVH, Universitari Vall Hebron.

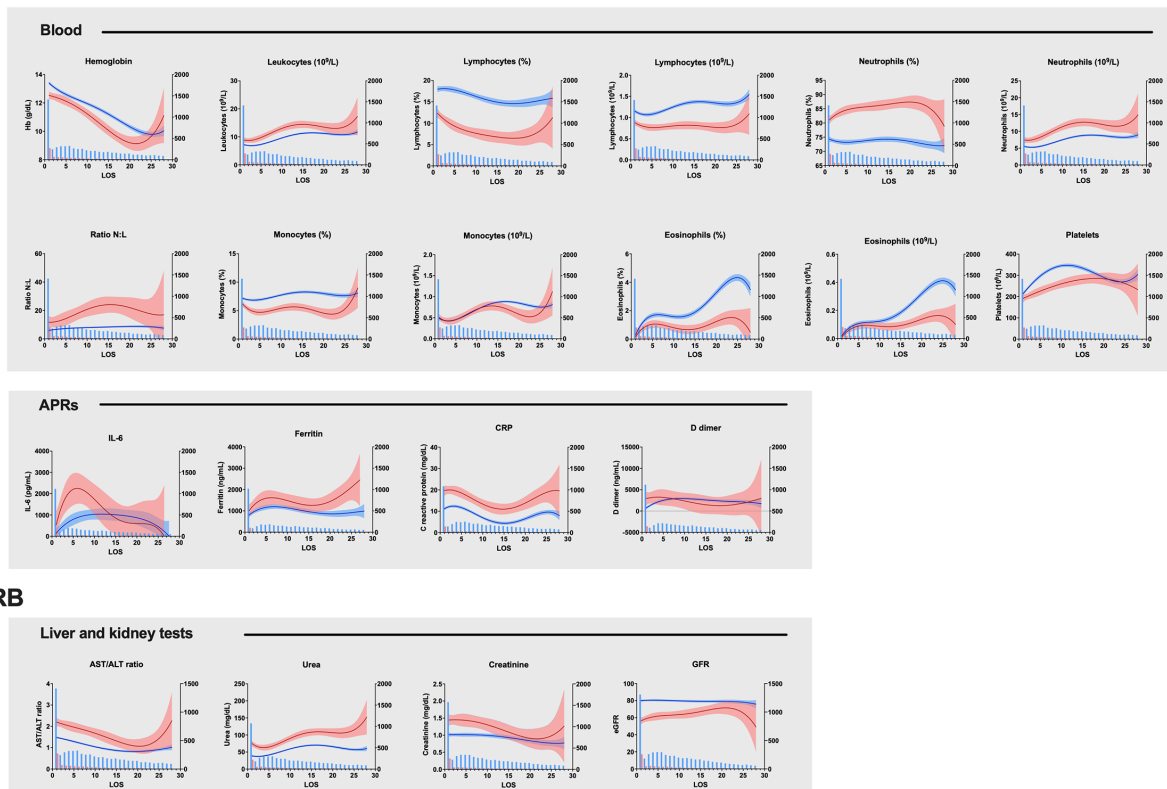
damage related helps with their interpretation and revealed that organ damage are better predictors of survival than severity while inflammatory are better predictors of severity than of death. 5) For the clinician at the bedside, some laboratory organ damage changes such as GFR reduction, may be less conspicuous than acute phase reactants increase but they may deserve attention when they deteriorate, even when they are still close to the normal range.

It is relevant that as part of another ongoing study lead by our institution (manuscript in preparation) antibodies to IFN-alpha2 and IFN-omega were measured in 917 patients of the HUVH cohort; 50 (5.6%) were found positive for one of the IFNs; the demographic features of these positive patients were concordant with previous reports (11, 38) in which age, mortality and male/female ratio were higher in IFN-antibody positive patients,

although without significant association. Inflammation and organ damage related variables were significantly higher in the IFN-positive patients (data not shown). Differences in design preclude to incorporate these data into the current project

The study here reported is similar to a number of studies carried out during the first year of the pandemic that already detected age, sex, comorbidities and the laboratory parameters used to assess severity in sepsis, to be associated with poor prognosis in COVID-19 patients (14, 16, 17, 20, 22). Differently from many of the studies that analysed cohorts over 1000 patients, in our studies the main database was generated by the physicians attending the patients and curated by medically qualified staff this providing a reliable medium granularity data set relatively unique. The statistical analysis included a variety of techniques that eventually revealed the weaknesses of the clinical

## IFRB



**FIGURE 6** | Vall d'Hebron University Hospital cohort, variations in the average clinical laboratory variables during the 28-day follow-up period. The blue and red lines represent the mean  $\pm$  CI values of the parameter for each day of follow-up for the survivors and deceased respectively. The blue bars indicate the number of values available for each day. Notice that samples were not obtained every day and therefore the averages result from plotting together all available values for each day of follow-up, as in 4. Data correspond to 7,586 samples, 6,589 from survivors and 997 from deceased out of 1,079 patients of the HUVH cohort. NLR, neutrophil-to-lymphocyte ratio; CRP, C-reactive protein; AST, aspartate aminotransferase; ALT, alanine aminotransferase; GFR, glomerular filtration rate; IFRB, inflammation-related biomarkers, ODBRs, organ damage-related biomarkers. APRs, acute-phase reactants.

laboratory tests. The explanation became only obvious by the careful analysis of the overall correlogram, the random forest and the iterative differential logistic regression. Among organ damage associated biomarkers, the best was SpO<sub>2</sub>/FiO<sub>2</sub>, but this is a bedside test performed by health personnel that reflects impairment in gases exchange due to important lung or circulatory system damage. However, it is a late predictor of the disease severity and only appear when the damage is well established.

We followed 4 study in the analysis of the variation of laboratory parameters along the period of hospitalisation; in their study sTNFRSF1A, sST2 (IL-33 soluble receptor), IL-10 and IL-15 maintained separated trajectories for survivors vs deceased over the hospitalization period. In our case, lymphocyte and neutrophil percentage, the corresponding NLR, and CRP also maintained a different trajectory over almost 30 days. Of note, IL-6 showed a marked peak at day 3-5 in deceased patient that is reminiscent. but sharper, than that of sST2 curve in 4. Probably, close monitoring of these and other immunological parameters during these critical 1-5 days of hospitalisation would

be a valuable tool for patient management. However, in our study, the two patients with the combined higher cytokines values survived, probably because they were relatively young (see legend to **Figure 7**). Of note, the best candidate biomarker that we detected, CXCL10 was also reported as such in 39 study,

There are several limitations to this study, starting with its retrospective nature, the relative smaller size of the mild group and the absence of non-hospitalized patients. In common to other retrospective studies, the *a priori* power calculation of the sample size was not carried out and the strategy was just to collect the maximal number of informative cases. The large cohorts obtained proved sufficient to detect the strong association of most variables considered but we cannot exclude that minor associations have been missed. The group of patients with mild COVID-19 was 71, small compared to the other groups in our study, but comparable to other retrospective studies e.g., 4. Regarding the lack of a non-hospitalised group, in fact the overall median hospital stay of the mild patients' group was 2 days, including 46 discharged within 24h. The study here reported is being followed by a prospective study, recruitment now closed, in which we put special care in recruiting

**TABLE 6** | Pairwise comparison of demographic and clinical laboratory biomarkers in the exploratory (HUVH) and the two validation cohorts (HUGTP and HUB).

Patients	Cohort HUVH (n = 1579)	Cohort HUB (n = 598)	Cohort HUGTP (n = 423)	HUVH vs. HUB (p-value)	HUVH vs. HUGTP (p-value)	HUB vs. HUGTP (p-value)
<b>Demographics</b>						
Age Median (IQR)	62 (50–75)	65 (53–74)	62 (52–71)	0.07	0.94	0.03
Females n (%)	699 (44.2 %)	208 (34.8 %)	157 (37.1 %)	<0.0001	0.46	0.009
Males n (%)	880 (55.7 %)	389 (65.2 %)	266 (62.90 %)			
<b>Mortality</b>						
Global n (%)	255/1579 (16.14 %)	154/598 (25.7%)	52/423 (12.3 %)	<0.0001	<0.0001	0.57
Females n (%)	107/699 (15.3 %)	52/208 (25.0 %)	14/157 (8.9%)	0.002	0.0001	0.42
Males n (%)	148/880 (16.8%)	101/389 (25.9 %)	38/266 (14.3)	0.0002	0.3443	0.0003
DFSO Median (IQR)	7 (4–10)	11 (8–15)	7 (4–10)	<0.0001	>0.99	<0.0001
<b>Laboratory variables</b>						
	<b>Median (IQR)</b>	<b>Median (IQR)</b>	<b>Median (IQR)</b>			
<b>Blood</b>						
Hb (g/dL)	13.5 (12.3–14.5)	12.8 (11.5–13.9)	13.6 (12.5–14.7)	<0.0001	0.14	<0.0001
WBC (10 <sup>9</sup> /L)	6.6 (5.1–8.8)	7.2 (5.3–11.1)	6.9 (5.2–9.3)	<0.0001	0.07	0.07
Neutrophils, %	76.1 (68–83.2)	80.4 (68.8–87.9)	79.5 (71.2–85.4)	<0.0001	0.0001	0.33
Neutrophils (10 <sup>9</sup> /L)	4.9 (3.5– 6.9)	5.7 (3.6–9.1)	5.2 (3.8–7.8)	<0.0001	0.005	0.17
Lymphocytes (%)	16 (10.5–23)	12.7 (7.3–20.7)	12.5 (8.1–19.1)	<0.0001	<0.0001	0.83
Lymphocytes (10 <sup>9</sup> /L)	1 (0.7–1.4)	0.9 (0.6–1.3)	0.8 (0.6–1.2)	<0.0001	<0.0001	0.09
Monocytes (%)	6.7 (4.8–8.8)	5.8 (3.6–8.9)	6.8 (4.9–9.1)	<0.0001	0.29	<0.0001
Monocytes (10 <sup>9</sup> /L)	0.4 (0.31–0.6)	0.4 (0.3–0.6)	0.5 (0.3–0.7)	0.34	0.009	0.003
Eosinophils (%)	0 (0–0.3)	0.1 (0–0.9)	0.1 (0–0.2)	<0.0001	0.47	0.006
Eosinophils (10 <sup>9</sup> /L)	0 (0–0.02)	0.01 (0–0.06)	0 (0–0)	<0.0001	<0.0001	<0.0001
Basophils (10 <sup>9</sup> /L)	0 (0.01–0.03)	0.02 (0.01–0.03)	0 (0–0)	0.06	<0.0001	<0.0001
NLR	4.8 (3.0–7.0)	6.3 (3.4–11.8)	6.3 (3.7–10.8)	<0.0001	<0.0001	0.93
Platelets (10 <sup>9</sup> /L)	197 (154–251)	234.5 (174.3–327.8)	203 (160–254)	<0.0001	0.35	<0.0001
<b>Clinical Chemistry</b>						
CRP (mg/dL)	8.9 (3.8–16.6)	8.1 (3.5–16.7)	9.5 (4.8–16.7)	0.31	0.64	0.69
IL-6 (pg/mL)	45.1 (23.6–80.0)	53.5 (20.4–131.1)	47.1 (24.6–92.6)	0.01	0.21	0.21
Ferritin (ng/mL)	539 (282.5–1011.5)	1210.4 (617.0–1903.3)	614 (316.5–1080)	<0.0001	0.16	<0.0001
Triglycerides (mg/dL)	121 (92–161)	173.9 (123.5–251.3)	NA (NA)	<0.0001	NA	NA
LDH (IU/L)	336 (271–421)	330.1 (261.3–448.1)	313 (224–441.5)	0.50	0.02	0.04
Urea (mg/dL)	35 (25–51)	39 (26.8–58.9)	34.9 (25–48.5)	0.009	0.17	0.009
AST (IU/L)	40 (30–60)	35.4 (23.9–58)	NA (NA)	<0.0001	NA	NA
ALT (IU/L)	28 (19–50)	33.1 (19.9–60.5)	30 (21–53)	<0.0001	0.008	0.11
Direct bilirubin (mg/dL)	0.3 (0.2–0.4)	NA (NA)	NA (NA)	<0.0001	NA	NA
Total bilirubin (mg/dL)	0.6 (0.5–0.7)	0.5 (0.4–0.7)	0.6 (0.5–0.8)	<0.001	0.03	<0.0001
D dimer (ng/mL)	263 (168–463.5)	590 (355–2108)	670 (415–1188.5)	<0.0001	<0.0001	0.69
Fibrinogen (g/L)	5.1 (4.4–6)	5.8 (5.1–6.6)	7.6 (6.5–8.8)	<0.0001	<0.0001	<0.0001
Prothrombin time INR	1.1 (1.0–1.2)	1.1 (1.1–1.2)	1.22 (1.1–1.4)	<0.0001	<0.0001	<0.0001

AST, Aspartic Amino Transferase; ALT, Alanine Amino Transferase; CRP, C Reactive Protein; GFR, Glomerular Filtration Rate; Hb, Hemoglobin; NLR, Neutrophil Lymphocyte Ratio; WBC, White Blood cell Count, NA, Not Available.

asymptomatic and symptomatic non-hospitalized cases. The initial analysis revealed that the inflammatory, cytokine and serological profiles show continuously progressive alterations throughout these categories (manuscript in preparation); this supports the notion that the group of mild patients here reported is similar to non-hospitalized patients in other series e.g., Jehi et al (16).

Another limitation is the absence of information regarding two key factors: the SARS-CoV-2 viral load and markers of the adaptive immune response. The SARS-CoV-2 detection techniques used during this period were diverse and not quantitative. This, added to the variability of swab sampling efficiency, made non-viable to include this important parameter (6) in the present study. Serological markers need 7–21 days to become detectable and are not too helpful as a tool to predict the prognosis of the patients during the initial medical assessment (39, 40). Finally, the effect of treatment on the outcomes was not analysed because therapeutic protocols and inclusion criteria were not uniform during the first wave. A summary of pharmacological treatments is however provided for reference

(Table S3); it shows that, as in many centres in Europe and the US, hydroxychloroquine, lopinavir/ritonavir and azithromycin were administered to most patients, while corticosteroids and tocilizumab, only later confirmed to be effective, were administered to 18 to 25 percent of patients respectively with a rapid clinical deterioration; soon later these were the predominant treatments in patients requiring oxygen supplementation. We did not strictly follow the transparent reporting of a multivariable prediction model for individual prognosis or diagnosis recommendations, as generating a prediction mode was not an objective, but most requirements were fulfilled (41).

The analyses presented here are intended for improved interpretation of available tests, but no algorithm is proposed. Most algorithms with good predictive power include parameters, such as oxygen requirements and imaging data, that reflect organ damage in patients that are already on the path to severe disease; in fact they predict what was already starting to happen (14–22, 41). By contrast, the ideal test/algorithm should be able to identify patients

**TABLE 7** | Performance of expanded immunological parameters in the special immunological studies group as assessed by ROC curve analysis and compared with other variables in the same group.

Survival/decease as outcome										
Variables	AUC	CI	p-value		AUC t1	CI	p-value	AUC t2	CI	p-value
Age	0.55	0.42-0.69	0.438							
Clin Lab Biomarkers				<b>Cytokines</b>						
GFR	0.55	0.46-0.74	0.176	CXCL10	0.83	0.74-0.92	2.34E-06	0.77	0.65-0.88	1.24E-04
IL-6	0.60	0.66-0.88	<b>0.000</b>	IL-1RA	<b>0.77</b>	0.60-0.84	0.002	<b>0.74</b>	0.61-0.85	7.71E-04
SpO2/FIO2 ratio	0.77	0.70-0.91	<b>&lt;0.001</b>	IL-6	<b>0.76</b>	0.65-0.87	1.903E-04	<b>0.83</b>	0.73-0.93	2.34E-06
CRP	0.80	0.61-0.86	<b>0.002</b>	CCL2	0.69	0.56-0.82	0.006	<b>0.81</b>	0.69-0.91	1.60E-05
D-dimer	0.73	0.43-0.71	0.353	IL-10	0.67	0.54-0.79	0.019	<b>0.72</b>	0.60-0.84	0.0014
Creatinine	0.57	0.49-0.78	0.069	IL-15	0.67	0.54-0.80	0.012	<b>0.74</b>	0.63-0.85	5.00E-04
Lymphocytes, %	0.63	0.62-0.86	<b>0.001</b>	IL-7	0.65	0.52-0.79	0.027	<b>0.73</b>	0.62-0.85	8.036E-04
NLR x100	0.74	0.63-0.87	<b>0.001</b>	TNF-α	0.65	0.51-0.79	0.033	<b>0.73</b>	0.55-0.81	0.008
Neutrophils, %	0.75	0.66-0.89	<b>0.000</b>							
Hb	0.52	0.37-0.68	0.775							
Monocytes, %	1.00	1.00-1.00	<b>&lt;0.001</b>	<b>Flow cytometry</b>						
Platelets	0.52	0.38-0.66	0.789	CD3+CD62L+	0.73	0.54-0.92	0.032	NA	NA	NA
Eosinophils, %	0.58	0.45-0.72	0.263	Naive T cells (%)						
Ferritin	0.61	0.46-0.76	0.147	TH17 (n)	0.67	0.45-0.88	0.131	NA	NA	NA
Non-severe vs severe as outcome										
Variables	AUC	CI	p-value		AUC t1	CI	p-value	AUC t2	CI	p-value
Age	0.55	0.42 to 0.69	0.438							
Clin Lab Biomarkers				<b>Cytokines</b>						
GFR	<b>0.60</b>	0.45 to 0.74	0.180	CXCL10	<b>0.83</b>	0.74-0.92	2.340E-06	<b>0.77</b>	0.65-0.89	1.24E-04
IL-6	0.77	0.65 to 0.88	<b>2.72E-04</b>	IL-6	<b>0.77</b>	0.66-0.88	1.903E-04	<b>0.83</b>	0.73-0.94	2.34E-06
SpO2/FIO2 ratio	0.80	0.70 to 0.91	<b>3.08E-05</b>	IL-1RA	<b>0.73</b>	0.60-0.84	7.714E-04	<b>0.74</b>	0.62-0.86	7.71E-04
CRP	0.73	0.61 to 0.86	<b>0.002</b>	IL-15	<b>0.72</b>	0.55-0.81	0.012	<b>0.75</b>	0.63-0.86	4.98E-04
D-dimer	0.57	0.43 to 0.71	0.353	CCL-2	0.69	0.57-0.82	0.065	<b>0.81</b>	0.69-0.92	1.60E-05
Creatinine	0.63	0.49 to 0.78	0.069	IL-10	0.67	0.54-0.79	0.019	<b>0.73</b>	0.61-0.85	0.001
Lymphocytes, %	0.74	0.62 to 0.86	<b>0.001</b>	TNF-alpha	0.65	0.51-0.79	0.033	0.69	0.56-0.82	0.008
NLR x100	0.75	0.63 to 0.87	<b>6.08E-04</b>	IL-7	0.64	0.50-0.77	0.051	<b>0.74</b>	0.62-0.85	8.04E-04
Neutrophils, %	0.77	0.66 to 0.89	<b>1.77E-04</b>	IL-2	0.6	0.46-0.73	0.176	<b>0.78</b>	0.66-0.90	7.23E-05
Hb	0.52	0.37 to 0.68	0.775	IL-17	0.52	0.38-0.66	0.777	<b>0.70</b>	0.57-0.83	0.005
Monocytes, %	0.72	0.60 to 0.84	<b>0.003</b>							
Platelets	0.52	0.38 to 0.66	0.789	<b>Flow cytometry</b>						
Eosinophils, %	0.58	0.45 to 0.72	0.263	CD3+CD62L+	0.61	0.40 to 0.83	0.3080			
Ferritin	0.61	0.46 to 0.76	0.147	Naive T (%)						
				TH17 (n)	0.57	0.34 to 0.79	0.5490			

Cytokine group of patients, n=74, Flowcytometry phenotype group of patients n= 41, for details see **Table S10**.

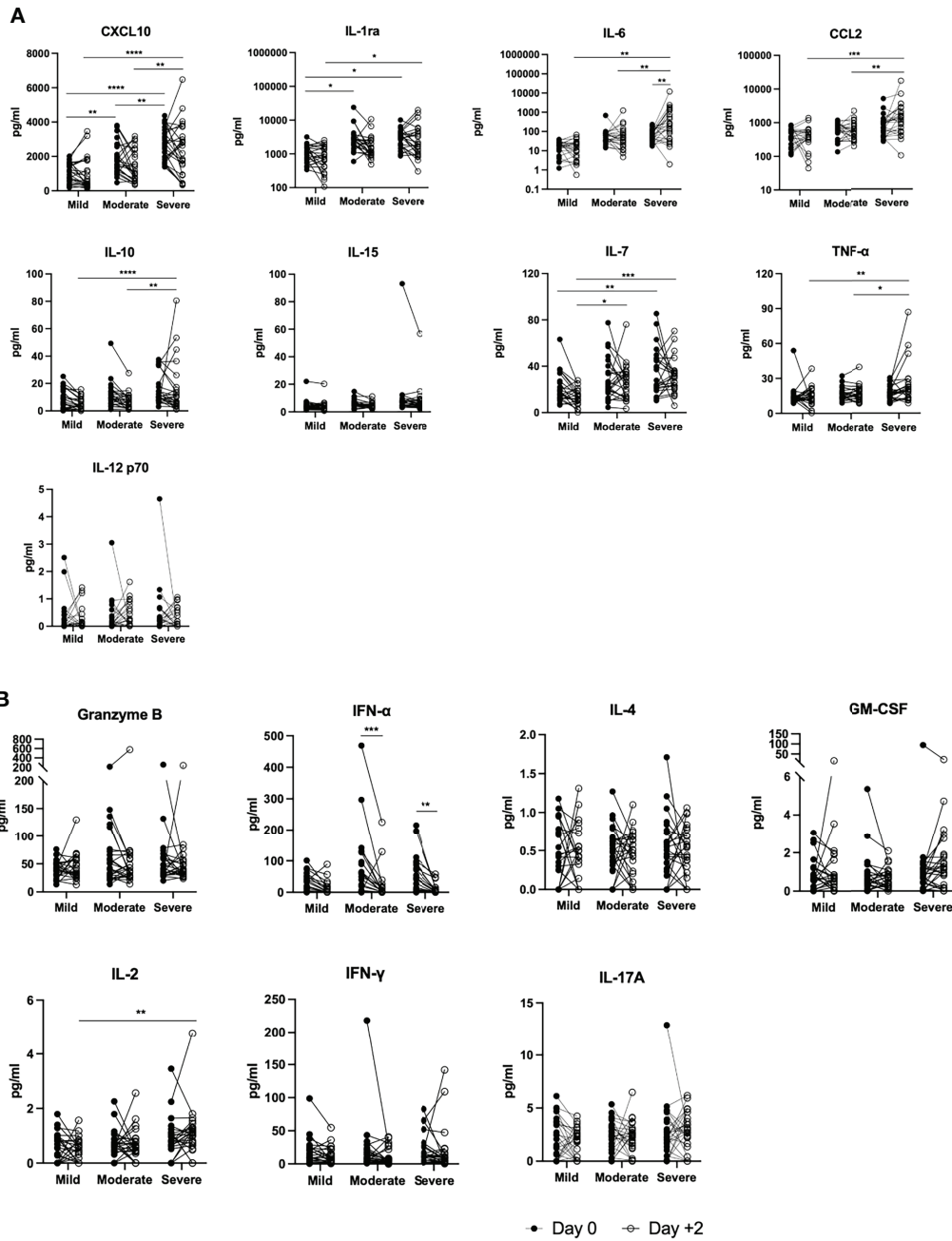
T1, time 1, initial data, T2 time 2, 2-3 days after onset. CRP; C Reactive Protein; NLR, Neutrophil/Lymphocyte Ratio; GFR, Glomerular Filtration Rate; Hb, Hemoglobin; NA, Not Available. P valued in bold, significant.

at risk before organ damage occurs. Our results suggest that this is difficult with current tests because inflammation has limited discriminatory power and by the time organ damage biomarkers are elevated, the progress towards severity of the process is already set in motion and beyond the ideal window for an immunomodulatory intervention. If, as postulated, the main determinant of COVID-19 severity is a dysregulated innate immune response leading to an delayed adaptive immune response, immunological biomarkers of this failure should be investigated in more detail during initial infection period (42, 43). The severity of COVID19 in patients with IFN pathway genetic defects (10) or autoantibodies to type I IFNs (11) supports this notion and suggests that anti-IFN antibodies should be included in future protocols. Alternatively, being the generation of specific cytotoxic T lymphocytes the main defense mechanism against an acute infection to a novel virus, monitoring these cells or a surrogate marker of them could help to predict patient outcome (4, 23, 25, 37, 44–46). These are two obvious approaches, among many, to identify

better biomarkers and the corresponding tests. This would require overcoming some technical difficulties but also the bureaucratic obstacles in transferring tests from the research to the clinical diagnostic immunology laboratories. Reliable early biomarkers would reduce the rate of hospitalisation and guide new treatment prescription to benefit patients at high-risk; generation of such biomarkers is urgent and should be feasible.

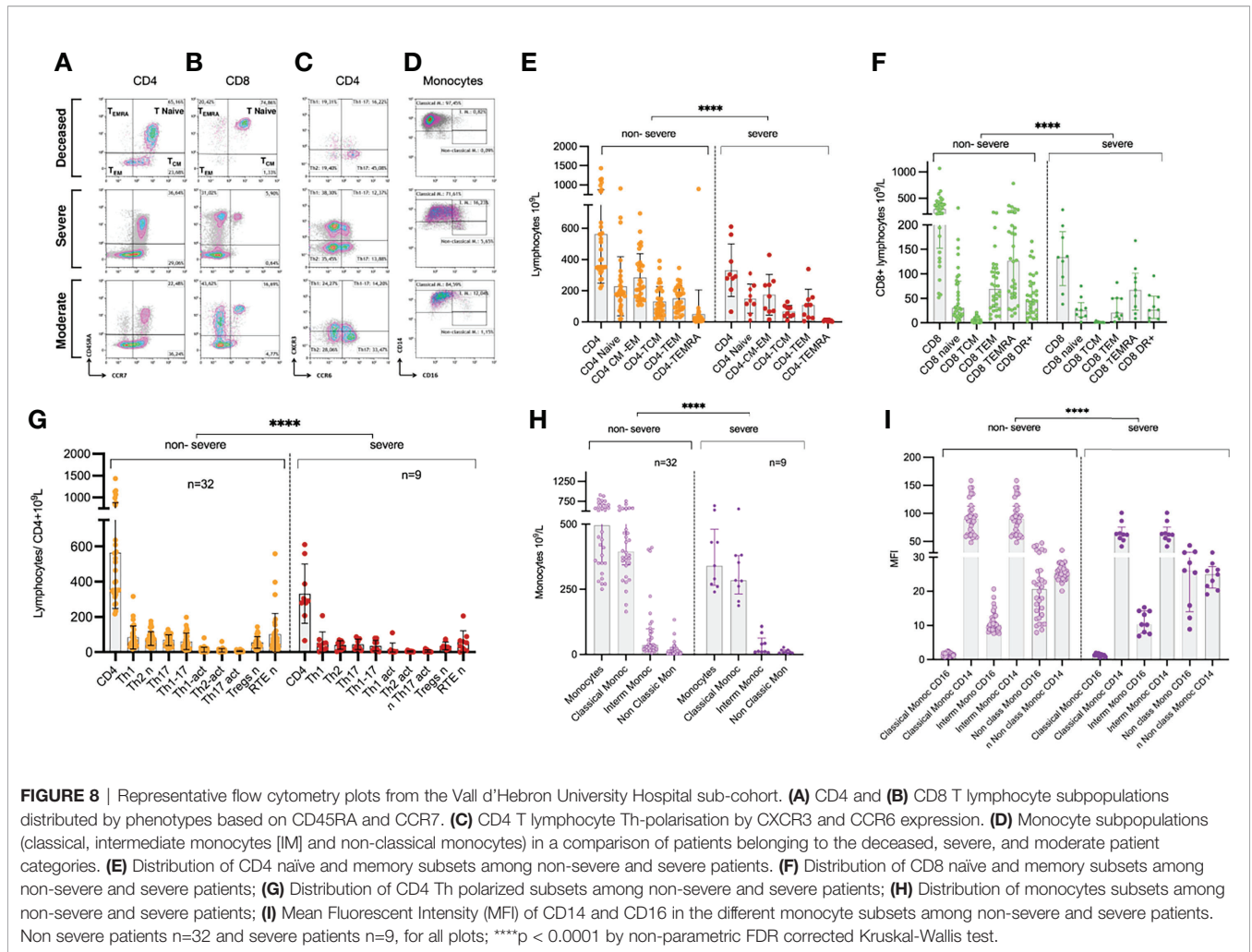
## HOSPITAL VALL D'HEBRON COVID-19 IMMUNE PROFILE GROUP

Artur Llobell Uriel MD, Romina Dieli MD, PhD and Roger Colobran PhD, Immunology Department; Gemma Codina MD, PhD and Tomas Pumarola MD, PhD, Microbiology Department; Roser Ferrer PhD and Vicente Cortina BSc, Clinical Laboratories Department; Magda Campins MD, PhD, Epidemiology and Public Health Department; Isabel Ruiz MD, Nuria Fernández



**FIGURE 7 |** Levels of cytokines and related factors in the Vall d'Hebron University Hospital cytokine studies sub-cohort. The levels of cytokines were measured in the ELLA<sup>®</sup> platform cytokines on days 0 and +2, and the changes in the levels are shown as before/after graphs. **(A)** cytokines mediating innate immunity and **(B)** Granzyme N, IFN-alpha plus cytokines mediating mostly adaptive immunity. Outliers, defined as values above mean + 2SD were identified for seven values. The three single confirmed outlier values for IL6, CXCL10 and CCL2 correspond to an early sample (day 3) of the same patient, a 44-years-old male born in South America, without comorbidities, with severe COVID; despite the cytokine storm this patient survived and was discharged after over six weeks in hospital, four of them at the ICU with mechanical ventilation. He received two doses of TCZ as part of the treatment. Another three confirmed outlier values for IL-15, IL-12p70 and GM-CSF corresponded to early samples from a single patient, a 61-year-old female with severe pneumonia, chronic lung disease, hypertension, and obesity as risk factors; she survived and was discharged after 30 days in hospital most of them in the ICU with mechanical ventilation. A third patient, with had a single outlier value for IFN-alpha corresponded to a 61-year-old female, with diabetes and hypertension; she suffered moderate COVID, remained at the regular hospital ward and was discharged after two weeks; patients was doing well at censoring time \*p < 0.05; \*\*p < 0.01; \*\*\*p < 0.001; \*\*\*\*p < 0.0001.





**FIGURE 8** | Representative flow cytometry plots from the Vall d’Hebron University Hospital sub-cohort. **(A)** CD4 and **(B)** CD8 T lymphocyte subpopulations distributed by phenotypes based on CD45RA and CCR7. **(C)** CD4 T lymphocyte Th-polarisation by CXCR3 and CCR6 expression. **(D)** Monocyte subpopulations (classical, intermediate monocytes [IM] and non-classical monocytes) in a comparison of patients belonging to the deceased, severe, and moderate patient categories. **(E)** Distribution of CD4 naïve and memory subsets among non-severe and severe patients. **(F)** Distribution of CD8 naïve and memory subsets among non-severe and severe patients; **(G)** Distribution of CD4 Th polarized subsets among non-severe and severe patients; **(H)** Distribution of monocytes subsets among non-severe and severe patients; **(I)** Mean Fluorescent Intensity (MFI) of CD14 and CD16 in the different monocyte subsets among non-severe and severe patients. Non severe patients n=32 and severe patients n=9, for all plots; \*\*\*\*p < 0.0001 by non-parametric FDR corrected Kruskal-Wallis test.

MD, Esteban Ribera MD and Joan Roig MD, Infectious Diseases Department; Ricardo Ferrer MD and Adolfo Ruiz-Sanmartín MD, Intensive Care Medicine Department; Albert Selva MD, PhD and Moises Labrador MD, PhD, Internal Medicine Department; María José Soler Romeo MD PhD, Nephrology Department; Jaume Ferrer MD, PhD, Eva Polverino MD, PhD and Antonio Alvarez MD, PhD, Pneumology Department; María Queralt Gorgas PhD and Marta Miarons PhD, Clinical Pharmacy Department; Pere Soler-Palacin, MD, PhD and Andrea Martin, MD, Pediatrics Department; Anna Suy MD, Obstetrics and Gynecology Division; Maria Jose Buzón PhD and Meritxell Genescà PhD, Infectious Disease Research Group; Santiago Perez-Hoyos and Miriam Mota-Foix, Statistics and Bioinformatics Unit, Vall Hebron Research Institute (VHIR).

the datasets should be directed to RP-B, Ricardo.pujol@uab.cat; MH-G, manhernandez@vhebron.net.

### ETHICS STATEMENT

This project was approved by the institutional ethics board of the three institutions (HUVH, HUGTP, and HUB) which waived the requirement for individual informed consent (protocol R(AG)242/2020). In the HUVH cohort, residual sera samples were transferred to the Vall d’Hebron University Hospital Biobank (PT17/0015/0047) part of the Carlos III Institute of Health network of biobanks (Number C.0006012). Written informed consent for participation was not required for this study in accordance with the national legislation and the institutional requirements.

### DATA AVAILABILITY STATEMENT

Deidentified data tables will be shared on request after approval of a proposal, with a signed data access agreement. Requests to access

### AUTHOR CONTRIBUTIONS

AS-M, MH-G, MM-G, and RP-B: Conceived, designed the work and reviewed the final manuscript. DÁ-S carried out laboratory experiments, data analysis, figure generation, data base

management and reviewed the Ms. RP-B generated the relational data base, performed the exploratory data analysis and wrote the first draft of manuscript. JP-P and IA-M collected the samples and carried out the flowcytometric blood phenotyping; PC-E performed part of the bioinformatic and statistical analysis; CZ-E, AT-S, and EM-C provided the HGTP patients data and reviewed the Ms. EP-C and JB-M provided the HUB patients data and reviewed the Ms. MR-B and FM-V provided data of internal medicine patients HUVH and reviewed the Ms; AA provided the SARS-CoV-2 data and reviewed the Ms; AS-P contribute to design the study, data collection and analysis, and reviewed the final version of the manuscript; AB-G provided the clinical laboratory data; JR provided the clinical the ICU data and reviewed the final version of the manuscript. All authors contributed to the article and approved the submitted version.

## FUNDING

This study was funded by Instituto de Salud Carlos III, Madrid, Spain, grants COV20/00416, COV20/00654 and COV20/00388 to RP-B, AT-S, and JB-M respectively and co-financed by the European Regional Development Fund (ERDF). DÁ-S is recipient of a doctoral fellowship from the Vall d'Hebron Research Institute, Barcelona, Spain. AS-M was supported by a postdoctoral grant "Juan Rodés" (JR18/00022) from Instituto de Salud Carlos III through the Ministry of Economy and Competitiveness, Spain. AS-P was financially supported by the Spanish Ministerio de Ciencia e Innovacion, grant PID2019-104830RB-I00, and by the Departament d'Economia i Coneixement de la Generalitat de Catalunya, grant 2017SGR622 (GRBIO).

## REFERENCES

- Chams N, Chams S, Badran R, Shams A, Araj A, Raad M, et al. COVID-19: A Multidisciplinary Review. *Front Public Health* (2020) 8:383. doi: 10.3389/fpubh.2020.00383
- Ghayda RA, Lee J, Lee JY, Kim DK, Lee KH, Hong SH, et al. Correlations of Clinical and Laboratory Characteristics of Covid-19: A Systematic Review and Meta-Analysis. *Int J Environ Res Public Health* (2020) 17:1–15. doi: 10.3390/ijerph17145026
- Zhou F, Yu T, Du R, Fan G, Liu Y, Liu Z, et al. Clinical Course and Risk Factors for Mortality of Adult Inpatients With COVID-19 in Wuhan, China: A Retrospective Cohort Study. *Lancet* (2020) 6736:1–9. doi: 10.1016/S0140-6736(20)30566-3
- Abers MS, Delmonte OM, Ricotta EE, Fintzi J, Fink DL, Almeida de Jesus AA, et al. An Immune-Based Biomarker Signature Is Associated With Mortality in COVID-19 Patients. *JCI Insight* (2021) 6:m1985. doi: 10.1172/jci.insight.144455
- Guallar MP, Meiriño R, Donat-Vargas C, Corral O, Juvé N, Soriano V. Inoculum at the Time of SARS-CoV-2 Exposure and Risk of Disease Severity. *Int J Infect Diseases* (2020) 97:290–2. doi: 10.1016/j.ijid.2020.06.035
- Marks M, Millat-Martinez P, Ouchi D, Roberts C, Alemany A, Corbacho-Monné M, et al. Transmission of COVID-19 in 282 Clusters in Catalonia, Spain: A Cohort Study. *Lancet Infect Dis* (2021) 21:629–36. doi: 10.1016/S1473-3099(20)30985-3
- Korber B, Fischer WM, Gnanakaran S, Yoon H, Theiler J, Abfalterer W, et al. Tracking Changes in SARS-CoV-2 Spike: Evidence That D614G Increases Infectivity of the COVID-19 Virus. *Cell* (2020) 182:812–827.e19. doi: 10.1016/j.cell.2020.06.043
- Sempere A, Salvador F, Monforte A, Sampol J, Espinosa-Pereiro J, Miarons M, et al. Covid-19 Clinical Profile in Latin American Migrants Living in Spain: Does the Geographical Origin Matter? *J Clin Med* (2021) 10:1–9. doi: 10.3390/jcm10225213
- Meyerholz DK, Perlman S. Does Common Cold Coronavirus Infection Protect Against Severe No pages available (only on line) SARS-CoV-2 Disease? *J Clin Invest* (2021) 131. doi: 10.1172/JCI144807
- Zhang Q, Bastard P, Liu Z, le Pen J, Moncada-Velez M, Chen J, et al. Inborn Errors of Type I IFN Immunity in Patients With Life-Threatening COVID-19. *Science* (2020) 370:eabd4570. doi: 10.1126/science.abd4570
- Bastard P, Rosen LB, Zhang Q, Michailidis E, Hoffmann H-H, Zhang, et al. Autoantibodies Against Type I IFNs in Patients With Life-Threatening COVID-19. *Science* (2020) 370:eabd4585. doi: 10.1126/science.abd4585
- Ellinghaus D, Degenhardt F, Bujanda L, Buti M, Albillos A, Invernizzi P, et al. Genomewide Association Study of Severe Covid-19 With Respiratory Failure. *N Engl J Med* (2020) 383:1522–34. doi: 10.1101/2020.10.06.20205864
- COVID-19 Host Genetics Initiative. Mapping the Human Genetic Architecture of COVID-19. *Nature* (2021) 600:472–7. doi: 10.1038/s41586-021-03767-x
- Smith GB, Prytherch DR, Meredith P, Schmidt PE, Featherstone PI. The Ability of the National Early Warning Score (NEWS) to Discriminate Patients at Risk of Early Cardiac Arrest, Unanticipated Intensive Care Unit Admission, and Death. *Resuscitation* (2013) 84:465–70. doi: 10.1016/j.resuscitation.2012.12.016
- Gupta RK, Marks M, Samuels THA, Luintel A, Rampling T, Chowdhury H, et al. Systematic Evaluation and External Validation of 22 Prognostic Models Among Hospitalised Adults With COVID-19: An Observational Cohort Study. *Eur Respir J* (2020) 56:2003498. doi: 10.1183/13993003.03498-2020
- Jehi L, Ji X, Milinovich A, Erzurum S, Merlino A, Gordon S, et al. Development and Validation of a Model for Individualized Prediction of Hospitalization Risk in 4,536 Patients With COVID-19. *PLoS One* (2020) 15: e0237419. doi: 10.1371/journal.pone.0237419

## ACKNOWLEDGMENTS

The authors thank all the patients and health staff of the Hospitals Vall d'Hebron, Bellvitge, and Germans Trias i Pujol and of the associated hospitals mentioned in the text who endured and did their best to overcome the first wave of COVID-19 in Barcelona, an experience that none of us would ever forget. The authors are grateful to Dr Isabel Novoa Garcia and Ms. Sheyla Pascual Martin for their invaluable help in organizing and maintain the COVID-19 collection in the Bio-Bank in particular to Sergio Navarro-Velázquez, Blanca Angelica Urban-Vargas, Mario Framil-Seoane, Virginia Mas-Bosch, Francisco Morandeira-Reg who collected the clinical data at HUB to Mr. Alex Pérez Rodríguez, Ms. Jessica Muñoz, Ms. Cinta Rabaza Martí, and Ms. Aina Aguiló Cucurull, the technical staff HUVH of the HUVH immunology laboratory who collected and organized the COVID-19 patient samples; and to Ms. Adelaida Parada Ramos, the secretary of the Immunology Division HUVH, who helped retrieve the electronic medical records and discharge notes in regard to this study for review by the medical personnel for this study.

## SUPPLEMENTARY MATERIAL

The Supplementary Material for this article can be found online at: <https://www.frontiersin.org/articles/10.3389/fimmu.2022.902837/full#supplementary-material>

17. Knight SR, Ho A, Pius R, Buchan I, Carson G, Drake TM, et al. Risk Stratification of Patients Admitted to Hospital With Covid-19 Using the ISARIC WHO Clinical Characterisation Protocol: Development and Validation of the 4C Mortality Score. *BMJ* (2020) 2:m3339. doi: 10.1136/bmj.m3339
18. Riveiro-Barciela M, Labrador-Horrillo M, Camps-Relats L, Gonzalez-Sans D, Ventura-Cots M, Terrones-Peinador M, et al. Simple Predictive Models Identify Patients With COVID-19 Pneumonia and Poor Prognosis. *PLoS One* (2020) 15(12):e0244627 doi: 10.1371/journal.pone.0244627
19. Wynants L, van Calster B, Collins GS, Riley RD, Heinze G, Schuit E, et al. Prediction Models for Diagnosis and Prognosis of Covid-19: Systematic Review and Critical Appraisal. *BMJ* (2020) 369:m1328. doi: 10.1136/bmj.m1328
20. Ambale-Venkatesh B, Quinaglia T, Shabani M, Sesso J, Kapoor K, Matheson MB, et al. Prediction of Mortality in Hospitalized COVID-19 Patients in a Statewide Health Network. *medRxiv* (2021). doi: 10.1101/2021.02.17.21251758
21. Galván-Román JM, Rodríguez-García SC, Roy-Vallejo E, Marcos-Jiménez A, Sánchez-Alonso S, Fernández-Díaz C, et al. IL-6 Serum Levels Predict Severity and Response to Tocilizumab in COVID-19: An Observational Study. *J Allergy Clin Immunol* (2021) 147:72–80.e8. doi: 10.1016/j.jaci.2020.09.018
22. Marcolino MS, Pires MC, Ramos LEF, Silva RT, Oliveira LM, Carvalho RLR, et al. ABC2-SPH Risk Score for in-Hospital Mortality in COVID-19 Patients: Development, External Validation and Comparison With Other Available Scores. *Int J Infect Dis* (2021) 110:281–308. doi: 10.1016/j.ijid.2021.07.049
23. Arunachalam PS, Wimmers F, Mok CKP, Perera RAPM, Scott M, Hagan T, et al. Systems Biological Assessment of Immunity to Mild Versus Severe COVID-19 Infection in Humans. *Science* (2020) 369:1210–20. doi: 10.1126/SCIENCE.ABC6261
24. Kuri-Cervantes L, Pampena MB, Meng W, Rosenfeld AM, Ittner CAG, Weisman AR, et al. Comprehensive Mapping of Immune Perturbations Associated With Severe COVID-19. *Sci Immunol* (2020) 5. doi: 10.1126/sciimmunol.abd7114
25. Lucas C, Wong P, Klein J, Castro TBR, Silva J, Sundaram M, et al. Longitudinal Analyses Reveal Immunological Misfiring in Severe COVID-19. *Nature* (2020) 584:463–9. doi: 10.1038/s41586-020-2588-y
26. Mann ER, Menon M, Knight SB, Konkel JE, Jagger C, Shaw TN, et al. Longitudinal Immune Profiling Reveals Key Myeloid Signatures Associated With COVID-19. *Sci Immunol* (2020) 5:eabd6197. doi: 10.1126/sciimmunol.abd6197
27. Mathew D, Giles JR, Baxter AE, Oldridge DA, Greenplate AR, Wu JE, et al. Deep Immune Profiling of COVID-19 Patients Reveals Distinct Immunotypes With Therapeutic Implications. *Science* (2020) 369. doi: 10.1126/science.abc8511
28. Wilk AJ, Rustagi A, Zhao NQ, Roque J, Martínez-Colón GJ, McKechnie JL, et al. A Single-Cell Atlas of the Peripheral Immune Response in Patients With Severe COVID-19. *Nat Med* (2020) 26:1070–6. doi: 10.1038/s41591-020-0944-y
29. Mueller YM, Schrama TJ, Ruijten R, Schreurs MWJ, Dwin GB, Grashof DGB, et al. Stratification of Hospitalized COVID-19 Patients Into Clinical Severity Progression Groups by Immuno-Phenotyping and Machine Learning. *Nat Commun* (2022) 13:915. doi: 10.1038/s41467-022-28621-0
30. Grau-Expósito J, Sánchez-Gaona N, Massana N, Suppi M, Astorga-Gamaza A, Perea D, et al. Peripheral and Lung Resident Memory T Cell Responses Against SARS-CoV-2. *Nat Commun* (2021) 12:3010 doi: 10.1038/s41467-021-23333-3
31. Marshall JC, Murthy S, Diaz J, Adhikari N, Angus DC, Arabi YM, et al. A Minimal Common Outcome Measure Set for COVID-19 Clinical Research. *Lancet Infect Dis* (2020) 20:e192–7. doi: 10.1016/S1473-3099(20)30483-7
32. Levey AS, Stevens LA, Schmid CH, Zhang YL, Castro AF3rd, Feldman HI, et al. A New Equation to Estimate Glomerular Filtration Rate. *Ann Internal Med* (2009) 150:604–12. doi: 10.7326/0003-4819-150-9-200905050-00006
33. Maecker HT, McCoy JP, Nussenblatt R. Standardizing Immunophenotyping for the Human Immunology Project. *Nat Rev Immunol* (2012) 12:191–200. doi: 10.1038/nri3158
34. García-Prat M, Álvarez-Sierra D, Aguiló-Cucurull A, Salgado-Perandrés S, Briongos-Sebastian S, Franco-Jarava C, et al. Extended Immunophenotyping Reference Values in a Healthy Pediatric Population. *Cytometry B Clin Cytometry* (2019) 96:223–33. doi: 10.1002/cyto.b.21728
35. *Barcelona Demography* (2020). Available at: <https://www.ine.es/jaxiT3/Datos.htm?t=2861>.
36. Ferrer R, Báguena M, Balcells J, Bañeras J, Biarnes A, de Nadal M, et al. Planning for the Assistance of Critically Ill Patients in a Pandemic Situation: The Experience of Vall D'hebron University Hospital. *Enfermedades Infecciosas y Microbiología Clínica* (2020) 110:697–700. doi: 10.1016/j.eimc.2020.08.007
37. Chen Z, John Wherry E. T Cell Responses in Patients With COVID-19. *Nat Rev Immunol* (2020) 20:529–36. doi: 10.1038/s41577-020-0402-6
38. Bastard P, Gervais A, le Voyer T, Rosain J, Philippot Q, Manry, et al. Autoantibodies Neutralizing Type I IFNs Are Present in ~ 4% of Uninfected Individuals Over 70 Years Old and Account for ~ 20% of COVID-19 Deaths. *Sci Immunol* (2021) 6(62):eabl4340. doi: 10.1126/sciimmunol.abl4340
39. Rydzynski Moderbacher C, Ramirez SI, Dan JM, Grifoni A, Hastie KM, Weiskopf D, et al. Antigen-Specific Adaptive Immunity to SARS-CoV-2 in Acute COVID-19 and Associations With Age and Disease Severity. *Cell* (2020) 183:996–1012. doi: 10.1016/j.cell.2020.09.038
40. Röltgen K, Powell AE, Wirz OF, Stevens BA, Hogan CA, Najeeb J, et al. Defining the Features and Duration of Antibody Responses to SARS-CoV-2 Infection Associated With Disease Severity and Outcome. *Sci Immunol* (2020) 5:eabe0240. doi: 10.1126/sciimmunol.ab0240
41. Collins GS, Reitsma JB, Altman DG, Moons KGM. Transparent Reporting of a Multivariable Prediction Model for Individual Prognosis or Diagnosis (TRIPOD): The TRIPOD Statement. *Ann Internal Med* (2015) 162:55–63. doi: 10.7326/M14-0697
42. Osuchowski MF, Winkler MS, Skirecki T, Cajander S, Shankar-Hari M, Lachmann G, et al. The COVID-19 Puzzle: Deciphering Pathophysiology and Phenotypes of a New Disease Entity. *Lancet Respir Med* (2021) 9:622–642. doi: 10.1016/S2213-2600(21)00218-6
43. Paludan SR, Mogensen TH. Innate Immunological Pathways in COVID-19 Pathogenesis. *Sci Immunol* (2022) 7:eabm5505. doi: 10.1126/sciimmunol.abm5505
44. Hadjadj J, Yatim N, Barnabei L, Corneau A, Bouscier J, Smith N, et al. Impaired Type I Interferon Activity and Inflammatory Responses in Severe COVID-19 Patients. *Science* (2020) 369:718–24. doi: 10.1126/science.abc6027
45. Lucas C, Klein J, Sundaram ME, Liu F, Wong P, Silva J, et al. Delayed Production of Neutralizing Antibodies Correlates With Fatal COVID-19. *Nat Med* (2021) 27:1178–86. doi: 10.1038/s41591-021-01355-0
46. Sette A, Crotty S. Adaptive Immunity to SARS-CoV-2 and COVID-19. *Cell* (2021) 184:861–80. doi: 10.1016/j.cell.2021.01.007

**Conflict of Interest:** The authors declare that the research was conducted in the absence of any commercial or financial relationships that could be construed as a potential conflict of interest.

**Publisher's Note:** All claims expressed in this article are solely those of the authors and do not necessarily represent those of their affiliated organizations, or those of the publisher, the editors and the reviewers. Any product that may be evaluated in this article, or claim that may be made by its manufacturer, is not guaranteed or endorsed by the publisher.

Copyright © 2022 Sánchez-Montalvá, Álvarez-Sierra, Martínez-Gallo, Perurena-Prieto, Arrese-Muñoz, Ruiz-Rodríguez, Espinosa-Pereiro, Bosch-Nicolau, Martínez-Gómez, Antón, Martínez-Valle, Riveiro-Barciela, Blanco-Grau, Rodríguez-Frias, Castellano-Escuder, Poyatos-Canton, Bas-Minguet, Martínez-Cáceres, Sánchez-Pla, Zurera-Egea, Teniente-Serra, Hernández-González, Pujol-Borrell and the "Hospital Vall d'Hebron Group for the study of COVID-19 immune profile". This is an open-access article distributed under the terms of the Creative Commons Attribution License (CC BY). The use, distribution or reproduction in other forums is permitted, provided the original author(s) and the copyright owner(s) are credited and that the original publication in this journal is cited, in accordance with accepted academic practice. No use, distribution or reproduction is permitted which does not comply with these terms.