



# Physical Fitness Attenuates the Impact of Higher Body Mass and Adiposity on Inflammation in Women With Systemic Lupus Erythematosus

## OPEN ACCESS

### Edited by:

Nancy Agmon-Levin,  
Sheba Medical Center, Israel

### Reviewed by:

Ralf J. Ludwig,  
University of Lübeck, Germany  
Ming-Kuei Shih,  
National Kaohsiung University of  
Hospitality and Tourism, Taiwan

### \*Correspondence:

José Antonio Vargas-Hitos  
joseantoniovh@hotmail.com

### Specialty section:

This article was submitted to  
Autoimmune and  
Autoinflammatory Disorders,  
a section of the journal  
Frontiers in Immunology

**Received:** 25 June 2021

**Accepted:** 20 September 2021

**Published:** 14 October 2021

### Citation:

Sola-Rodríguez S, Vargas-Hitos JA, Gavilán-Carrera B, Rosales-Castillo A, Ríos-Fernández R, Sabio JM and Soriano-Maldonado A (2021) Physical Fitness Attenuates the Impact of Higher Body Mass and Adiposity on Inflammation in Women With Systemic Lupus Erythematosus. *Front. Immunol.* 12:729672. doi: 10.3389/fimmu.2021.729672

**Sergio Sola-Rodríguez**<sup>1,2</sup>, **José Antonio Vargas-Hitos**<sup>3\*</sup>, **Blanca Gavilán-Carrera**<sup>4</sup>, **Antonio Rosales-Castillo**<sup>3</sup>, **Raquel Ríos-Fernández**<sup>5</sup>, **José Mario Sabio**<sup>3</sup> and **Alberto Soriano-Maldonado**<sup>1,2</sup>

<sup>1</sup> Department of Education, Faculty of Education Sciences, University of Almería, Almería, Spain, <sup>2</sup> SPORT Research Group (CTS-1024), CERNEP Research Center, University of Almería, Almería, Spain, <sup>3</sup> Systemic Autoimmune Diseases Unit, Department of Internal Medicine, "Virgen de las Nieves" University Hospital, Granada, Spain, <sup>4</sup> Department of Physical Education and Sport, Faculty of Sport Sciences, University of Granada, Granada, Spain, <sup>5</sup> Systemic Autoimmune Diseases Unit, Department of Internal Medicine, "San Cecilio" University Hospital, Granada, Spain

**Aims:** Higher body mass and adiposity represent independent contributors to the systemic low-grade inflammatory state often observed in patients with systemic lupus erythematosus (SLE). This study assessed the role of physical fitness in the association of body mass and adiposity with inflammation in women with SLE.

**Methods:** A total of 77 women with SLE were included in this cross-sectional study. We obtained body mass index, waist-to-height ratio, and body fat percentage as indicators of body mass and adiposity. Inflammation was assessed through Serum levels of C-reactive protein, interleukin 6, and leptin. Cardiorespiratory fitness was assessed with the 6-minute walk test, range of motion with the back-scratch test, and muscular strength with handgrip dynamometry.

**Results:** Cardiorespiratory fitness attenuated the association of both body mass index and body fat percentage with interleukin 6 (all,  $P < 0.05$ ). Range of motion attenuated the association of body mass index with interleukin 6 ( $P < 0.05$ ) and the association of body fat percentage with C-reactive protein ( $P < 0.05$ ). These interactions indicated that higher fitness was associated with a lower increase in inflammation per unit increase of body mass or adiposity. Muscular strength showed a non-significant trend to attenuate the

association of body fat percentage with interleukin 6 ( $P=0.057$ ) but potentiated the association of body fat percentage with leptin ( $P<0.05$ ).

**Conclusion:** These findings suggest that higher levels of cardiorespiratory fitness and range of motion might attenuate the impact of higher body mass and adiposity on inflammation in women with SLE. The role of muscular strength requires further investigation.

**Keywords:** obesity, systemic low-grade inflammation, cardiorespiratory fitness, range of motion, flexibility, autoimmune diseases, body mass index, body fat percentage (BF%)

## 1 INTRODUCTION

Systemic lupus erythematosus (SLE) is an autoimmune disease characterized by a chronic low-grade inflammatory state that is independent of the disease activity (1). This inflammatory state, along with a higher prevalence of traditional cardiovascular risk factors, seems to contribute to the increased risk of atherosclerosis and premature cardiovascular diseases observed in this population (2, 3).

Higher body mass and adiposity represent have shown to be independent contributors to the systemic low-grade inflammatory state of patients with SLE (4, 5) that worsen the course of SLE (2) and are associated with higher disease activity and damage accrual (5). This is not surprising since adipose tissue is an active endocrine organ that secretes a variety of cytokines such as C-reactive protein (hsCRP), interleukin-6 (IL-6), and leptin, which are, in fact, involved in atherosclerosis not only in the general population (6) but also in patients with systemic autoimmune diseases (2, 7, 8). Among other relevant indicators, body mass index (BMI; a measure of body mass) (9), waist-to-height ratio (a measure of central adiposity) (10) and body fat percentage (a measure of total adiposity) (11), are independent predictors of cardiovascular diseases (2, 12).

Physical fitness is a strong modifiable health marker both in the general population (13) and in patients with rheumatological diseases (14, 15). Several studies have observed that patients with SLE present low levels of cardiorespiratory fitness (16, 17) and muscular strength (18), which are closely related to the functional status, fatigue and the quality of life of the patients (19). As low physical fitness, and particularly low cardiorespiratory fitness is a significant mortality predictor in the general population (20) that seems to be associated with higher age-related arterial stiffness (16) and a worse cardiovascular profile in patients with rheumatic conditions (14), we hypothesized that physical fitness could attenuate the impact of higher body mass and adiposity on inflammation in women with SLE. As fitness is modifiable through exercise interventions, investigating the extent to which fitness influences the association of body mass and adiposity with inflammation in patients with SLE is of clinical interest and may help to provide further insight into the potential role of exercise as an anti-inflammatory therapy in this population.

Therefore, the aim of this study was to assess the role of physical fitness in the association of body mass and adiposity with inflammation in women with SLE.

## 2 MATERIAL AND METHODS

### 2.1 Design and Participants

This is a cross-sectional study in which 172 patients with SLE were recruited. Women, with a diagnosis of SLE according to the ACR criteria (21), with a minimum medical follow-up of 1 year at our unit and both treatment and clinical stability (defined as no changes in the systemic lupus erythematosus disease activity index [SLEDAI]) during the previous 6 months of the study were included. Exclusion criteria were not being able to read, understand and/or sign the informed consent; personal history of clinical cardiovascular diseases in the previous year, receiving a biological treatment or requiring doses of prednisone (or equivalent) greater than 10 mg/day during the previous 6 months of the study. Detailed information about the aims and study procedures was given to all the participants, who signed informed consent before being included in the study. The Research Ethics Committee reviewed and approved the study protocol.

### 2.2 Sample Size Calculation

The sample size was calculated for a clinical trial (NCT03107442) about the effects of aerobic exercise on arterial stiffness (primary outcome), inflammation, fitness (secondary outcomes) and patient-reported outcomes that was published earlier (22, 23). A total of 58 women with SLE were recruited for the trial, although a larger sample ( $n=77$ ) performed baseline evaluations for cross-sectional analyses. Therefore, the nature of this study can be considered exploratory.

### 2.3 Procedures

Potentially eligible participants were invited by phone to a personal screening. Included participants attended the Hospital facilities on two different occasions. On day 1, socio-demographic and clinical information were collected, and anthropometric measures and physical fitness tests performed. On day 2 (i.e. between 2 and 4 days after day 1), 8-h fasting blood samples were collected between 8:00 am and 10:00 am.

### 2.4 Outcome Measures

#### 2.4.1 Body Mass and Adiposity Assessment

Height (cm) was measured using a height gauge, weight (kg) and body fat percentage with a bioimpedance device (InBody R20, Biospace, Seoul, Korea), and BMI was calculated ( $\text{kg}/\text{m}^2$ ). Waist

circumference (cm) was measured with an anthropometric tape (Harpندن, Holtain Ltd., Wales, UK), and waist-to-height ratio (waist circumference/height) was calculated.

#### 2.4.2 Blood Samples and Biochemical Analyses

Fasting blood specimens for biochemical and immunological tests were collected and routinely processed by the central laboratory of our hospital.

Regarding inflammatory markers, high-sensitivity CRP and interleukin 6 (IL-6) were measured in serum, which was initially separated by centrifugation and stored at  $-70^{\circ}\text{C}$ . CRP levels were assessed by an immunoturbidimetric method using the ARCHITECT cSystems; MULTIGENT CRP Vario assay. Bioserum concentration of IL-6 (pg/mL) was measured by immunoradiometric assay using commercial kits (MILLIPLEX MAP Kit Human High Sensitivity T Cell Magnetic Bead Panel [HSTMAG-28SK], Millipore) following the manufacturer's instructions. Quantitative data were obtained by using the Luminex-200 system (Luminex Corporation, Austin, TX), and data analysis was performed on Xponent 3.1 software. The detection limits for IL-6 were 0.73 pg/mL.

Leptin was measured in serum by the enzyme-linked immunosorbent assay DBC Direct Kit (Diagnostic Biochem. Canada, Canada) with 0.5 ng/ml sensitivity. Intra assay coefficient of variation (CV) and interassay CV of the kit were 5.9 and 3.7%, respectively.

#### 2.4.3 Physical Fitness

Cardiorespiratory fitness was assessed through the 6-minute walk test. The 6-minute walk test measures the maximum distance (in meters) a person is able to walk during six minutes (24). Previously, this test has been commonly used to investigate cardiorespiratory fitness in rheumatic diseases, including patients with SLE (25–27).

Upper-body range of motion, also referred to as flexibility, was assessed with the back-scratch test (24). This test measures how close the hands can be brought together behind the back. The distance between (or overlap of) the middle fingers behind the back was recorded twice for each arm, and the best scores from the right and left arms were averaged.

Muscular strength was assessed with the handgrip strength test as previously described (28). In this test, the subject holds a dynamometer in the hand, with the arm at right angles and the elbow by the side of the body. When ready, the subject squeezes the dynamometer with maximum isometric effort for about 5 seconds. The best result after two trials for each hand is recorded, with at least 30 seconds recovery between each effort, and best score of each hand was used to compute an average of the two hands.

#### 2.4.4 Other Measurements

All participants filled out a socio-demographic and clinical data questionnaire, information that was completed consulting a computerized database of the patients that included age, educational level, occupational status, and SLE data (diagnostic criteria, year of diagnosis, time of evolution, and treatments). Disease activity was assessed through SLEDAI, which takes into

account the presence/absence of several clinical and analytical manifestations; the final score ranges from 0 to 105, where a higher score indicates higher degree of disease activity (29). Blood pressure was measured with Mobil-O-Graph<sup>®</sup> (IEM GmbH, Stolberg, Germany) (30).

### 2.5 Statistical Analysis

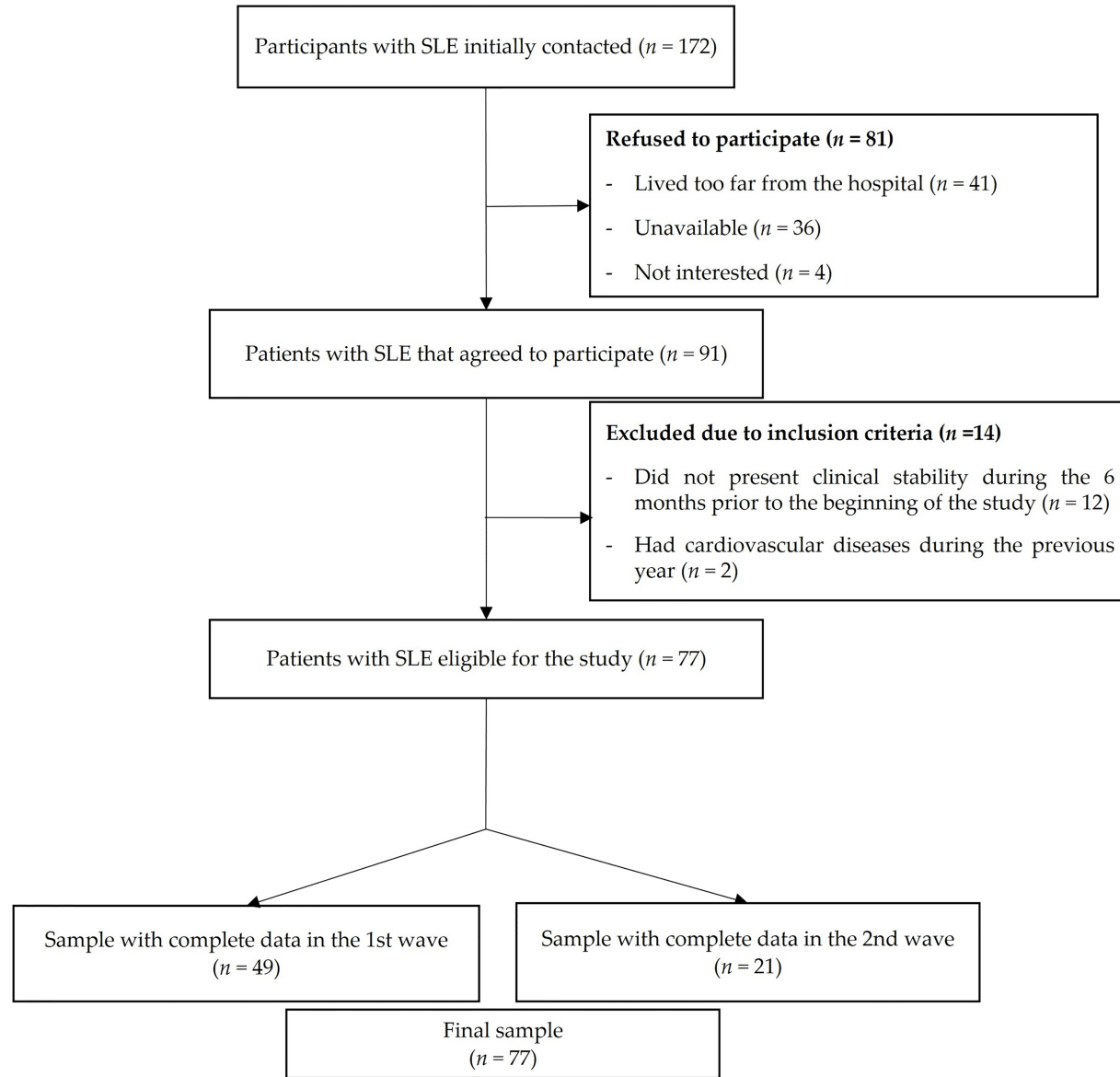
The descriptive characteristics of the study participants are presented as median and interquartile range for continuous variables, and frequencies and percentages for categorical variables, unless otherwise indicated. Two inflammatory markers (i.e. IL-6 and hsCRP) were winsorized due to the presence of 1 and 3 outliers, respectively. The distribution of the main study variables assessed through histograms, Kolmogorov-Smirnov Test, and Q-Q charts, showed a non-normal distribution. Consequently, non-parametric tests were used. Quantile regression models were built, including each inflammatory marker as dependent variable in separate models and the body mass or adiposity indicator, fitness, and the body mass/adiposity $\times$ fitness interaction as independent variables. Age, SLEDAI, and corticosteroid intake were entered as potential confounders (31). Whenever the interaction was not significant, it was removed from the models and the results are presented without the interaction term.

The statistical analyses were performed with Stata v.14.0 (Stata Corp LP., Texas, USA). Statistical significance was set at  $P < 0.05$ .

## 3 RESULTS

The flowchart of the study participants is presented in **Figure 1**. From a total of 172 patients initially invited, 81 refused to participate (41 patients reported living very far from the hospital, 36 were not able to find time to perform the evaluations, and 4 were not interested), 12 patients did not present clinical stability during the previous 6 months at the beginning of the study, and 2 patients had cardiovascular disease during the previous year. A total of 77 women with SLE (mean age 43.2, SD 13.8) fulfilled the inclusion criteria, agreed to participate, and were assessed in two waves (49 women in October 2016 and 28 women in February 2017). Both evaluations were identical, with the exception that 6-minute walk test, IL-6 and CRP were not carried out ( $n=28$ ) in 2017 wave due to timing issues. One woman did not perform both handgrip strength test and back-scratch test due to a wrist injury.

The descriptive characteristics of the study participants are presented in **Table 1**. The median BMI was 24.0 (IQR 22.5 – 27.3)  $\text{kg}/\text{m}^2$ , the median waist-to-height ratio was 0.48 (IQR 0.47 – 0.55) cm and the median body fat percentage was 34.5 (IQR 28.9 – 40.5). Regarding inflammatory variables, the median hsCRP levels were 1.77 mg/L (IQR 0.7 – 3.12), the median IL-6 levels were 2.16 (IQR 1 – 4.23) pg/mL, and the median leptin levels were 28.8 ng/mL (IQR 19.15 – 52.55). For cardiorespiratory fitness, the median walking distance assessed with the 6-minute walk test was 575 (IQR 525 – 625) meters. For muscular strength, the median handgrip strength was 24.2 (IQR 20.2 – 26.5) kg. For range of



**FIGURE 1** | Flow diagram of the study participants throughout the study.

**TABLE 1 |** Descriptive characteristics of the study participants.

	<b>N</b>	<b>Median</b>	<b>IQR</b>
Age (years)	77	42.7	32.6 – 53.88
Weight (kg)	77	62.7	57.9 – 69.0
Height (cm)	77	159.5	155 – 164
Body Mass Index (kg/m <sup>2</sup> )	77	24.0	22.5 – 27.3
Waist-to-Height Ratio (cm)	77	0.48	0.465 – 0.552
Body Fat (%)	77	34.5	28.9 – 40.5
Waist circumference (cm)	77	78.0	73.4 – 87.0
6-Minute Walk Test (meters)	49	575	525 – 625
Back-scratch Test (cm)	76	0.125	-7.5 – 7.25
Dominant back-scratch Test (cm)	76	3.0	-4.5 – 8.25
Non dominant back-scratch Test (cm)	76	-2.75	-11.5 – 6.0
Handgrip Strength (kg)	76	24.2	20.2 – 26.5
Dominant Handgrip Strength (kg)	76	24.05	20.3 – 27.25
Non dominant Handgrip Strength (kg)	75	24.0	20.3 – 27.0
Interleukin 6 (pg/mL)	44	2.16	1.0 – 4.23
hsCRP (mg/L)	77	1.77	0.7 – 3.12
Leptin (ng/mL)	44	28.75	19.15 – 52.55
Dyslipidemia (n, %)	77	14 (18)	
Diabetes (n, %)	77	1 (1)	
Smokers (n, %)	77	45 (58)	
Duration of SLE (years)	77	12	6 – 21
SLEDAI*	77	0.68	1.5
SDI*	77	0.55	1.11
Cumulative Prednisone dose (mg)	77	2547.5	0 – 5056.25
Daily Prednisone dose (mg)	77	2.5	0 – 5
		<b>n (%)</b>	
Prednisone use (%)	77	50 (65)	
Immunosuppressants (%)	77	35 (45)	
Antimalarials (%)	77	69 (89)	
NSAIDs intake (%)	77	0 (0)	

IQR, Interquartile range; hsCRP, High sensitivity C-reactive protein; SLEDAI, Systemic lupus erythematosus disease activity index; NSAIDs, Nonsteroidal anti-inflammatory drugs; SLE, Systemic lupus erythematosus. SDI, Systemic Lupus International Collaborating Clinics/American College of Rheumatology Damage Index. All variables show mean and SD values except corticosteroid dose, immunosuppressants, dyslipidemia, diabetes, and smokers. \*Mean and standard deviation.

motion, the average score in the back-scratch test was 0.1 (IQR -7.5 – 7.25) cm.

**Tables 2–4** represent the association of body mass/adiposity and physical fitness (and their interaction) with inflammation after controlling for potential confounders. Regarding cardiorespiratory fitness, there was a significant interaction with BMI on IL-6 ( $P<0.05$ ), indicating that higher cardiorespiratory fitness was associated with a lower increase in IL-6 per each additional BMI unit. For example, participants who were able to walk 380 meters in the 6-minute walk test presented an increase of 1.13 pg/mL in IL-6 for 1 incremental BMI unit, while those who were able to walk 560 meters presented an increase of 0.12 pg/mL in IL-6 for 1 incremental BMI unit. There was also a significant interaction of cardiorespiratory fitness with body fat percentage on IL-6 ( $P<0.05$ ). Range of motion also interacted with BMI on IL-6 ( $P<0.05$ ) so that, for example, a score of -20 cm in the back-scratch test was associated with an increase of 0.80 pg/mL in IL-6 for 1 incremental BMI unit, while a score of +1 cm was associated with an increase of 0.07 pg/mL in IL-6 for 1 incremental BMI unit. Furthermore, there was an interaction with body fat percentage on hsCRP ( $P<0.05$ ). Finally, there was an interaction of muscular strength with body fat percentage on leptin ( $P<0.05$ ). There were also non-significant interactions, such as interaction of range of motion with BMI on hsCRP ( $P=0.056$ ), the interaction of

cardiorespiratory fitness with waist-to-height ratio on IL-6 ( $P=0.078$ ), and the interaction of muscular strength with body fat percentage on IL-6 ( $P=0.057$ ). A graphical representation of the main study findings presenting the key interactions of body mass/adiposity with physical fitness on inflammatory markers is displayed in **Figure 2**.

## 4 DISCUSSION

The main findings of this study suggest that higher levels of physical fitness might attenuate the impact of higher body mass and adiposity on inflammation in women with SLE. Overall, we observed that higher fitness was associated with lower increase of some inflammatory markers for each additional unit of body mass/adiposity. These findings open a window of opportunity to understand the potential of fitness to counteract the effect of higher body mass and adiposity on inflammation in autoimmune diseases, although this needs to be corroborated in future and larger prospective studies.

To the best of our knowledge, this is the first study evaluating how the association of body mass and adiposity with relevant inflammatory markers might be dependent of physical fitness in

**TABLE 2 |** Quantile regression analyses assessing the interaction of body mass/adiposity with cardiorespiratory fitness on inflammatory markers.

hsCRP						
	B	SE	95% CI		p	
BMI	0.209	0.063	0.082	, 0.336	<b>0.002</b>	
CRF	0.01	0.005	-0.001	, 0.02	0.065	
BMI×CRF					NS*	
WHtR	4.661	5.193	-5.811	, 15.133	0.374	
CRF	0.005	0.005	-0.006	, 0.016	0.371	
WHtR×CRF					NS*	
BF%	0.048	0.038	-0.028	, 0.124	0.213	
CRF	0.006	0.005	-0.048	, 0.017	0.268	
BF%×CRF					NS*	
IL-6						
	B	SE	95% CI		p	
BMI	5.504	1.478	2.509	, 8.5	<b>0.001</b>	
CRF	0.229	0.071	0.085	, 0.372	<b>0.003</b>	
BMI×CRF	-0.009	0.003	-0.015	, -0.004	<b>0.002</b>	
WHtR	142.8	71.72	-2.522	, 288.1	0.054	
CRF	0.122	0.069	-0.019	, 0.263	0.088	
WHtR×CRF	-0.245	0.135	-0.519	, 0.029	0.078	
BF%	1.351	0.537	0.264	, 2.438	<b>0.016</b>	
CRF	0.076	0.035	0.004	, 0.148	<b>0.039</b>	
BF%×CRF	-0.002	0.001	-0.004	, 0	<b>0.026</b>	
Leptin						
	B	SE	95% CI		p	
BMI	3.188	0.568	2.038	, 4.338	<b>&lt;0.001</b>	
CRF	0.016	0.047	-0.079	, 0.111	0.741	
BMI×CRF	NS*					
WHtR	-356.93	295.76	-956.21	, 242.33	0.235	
CRF	-0.587	0.283	-1.16	, -0.013	<b>0.045</b>	
WHtR×CRF	NS*					
BF%	2.442	0.346	1.742	, 3.142	<b>&lt;0.001</b>	
CRF	0	0.048	-0.097	, 0.097	0.997	
BF%×CRF					NS*	

The markers of inflammation were high sensitivity C-reactive protein (hsCRP), interleukin 6 (IL-6) and leptin. The markers of body mass/adiposity were body mass index (BMI), waist-to-height ratio (WHtR) and body fat percentage (BF%); CRF, cardiorespiratory fitness.

B, unstandardized regression coefficient indicating the expected unit change in the dependent variable for one-unit change in the independent variable; SE, standard error NS, non-significant.

Quantile regression models were built including each inflammatory marker as dependent variable in separate models and the body mass or adiposity indicator, CRF, and the body mass/adiposity×CRF interaction as independent variables. All the analyses were adjusted for age, SLEDAI, and accumulated corticosteroid intake. When the interaction was not significant, the interaction term was removed from the regression model and the results are presented without interaction (i.e., the independent association of body mass/adiposity and CRF with the inflammatory marker).

women with SLE. Although the association of body mass and adiposity with inflammation is well-described both in the general population (32–34) and in SLE (4), research analyzing the potential role of fitness in this association is limited and inconclusive. While Park et al. (35) found an interaction effect of cardiorespiratory fitness with waist circumference on IL-6 in young adults, Bergens, Nilsson and Kadi (36) did not find an interaction effect when considering cardiorespiratory fitness and adiposity with pro and anti-inflammatory biomarkers in a sample of older women.

In this study, higher cardiorespiratory fitness was associated with lower increase in IL-6 per additional unit of either BMI, body fat percentage and, to a lesser extent, of waist-to-height

ratio. These findings suggest that the association of body mass and adiposity with inflammation in SLE could depend on the level of cardiorespiratory fitness and that SLE patients with lower cardiorespiratory fitness levels could have higher risk of obesity-related low-grade inflammation. Cardiorespiratory fitness is a relevant health-related parameter that strongly predicts mortality risk in the general population (13) and is associated with a more favorable body composition (37) and higher health-related quality of life in SLE (38). These results extend the potential beneficial roles of cardiorespiratory fitness in women with SLE.

We also observed that higher levels of upper-body range of motion were associated with lower increase in IL-6 per unit of

**TABLE 3** | Quantile regression analyses assessing the interaction of body mass/adiposity with range of motion on inflammatory markers.

hsCRP						
	B	SE	95% CI		p	
BMI	-0.014	0.067	-0.148	, 0.12	0.835	
ROM	0.203	0.135	-0.066	, 0.473	0.137	
BMI×ROM	-0.01	0.005	-0.021	, 0.0003	0.056	
WHtR	3.359	4.472	-5.561	, 12.281	0.455	
ROM	-0.054	0.034	-0.123	, 0.139	0.116	
WHtR×ROM					NS*	
BF%	-0.02	0.03	-0.08	, 0.04	0.496	
ROM	0.222	0.087	0.048	, 0.397	<b>0.013</b>	
BF%×ROM	-0.008	0.002	-0.013	, -0.003	<b>0.001</b>	
IL-6						
	B	SE	95% CI		p	
BMI	0.109	0.203	-0.302	, 0.52	0.594	
ROM	0.932	0.443	0.035	, 1.829	<b>0.042</b>	
BMI×ROM	-0.035	0.017	-0.068	, -0.001	<b>0.045</b>	
WHtR	1.845	10.924	-20.27	, 23.96	0.867	
ROM	0.06	0.074	-0.089	, 0.21	0.417	
WHtR ×ROM					NS*	
BF%	0.135	0.08	-0.028	, 0.298	0.102	
ROM	0.07	0.073	-0.078	, 0.218	0.34	
BF%×ROM					NS*	
Leptin						
	B	SE	95% CI		p	
BMI	3.636	0.558	2.507	, 4.766	<0.001	
ROM	0.433	0.323	-0.221	, 1.086	0.188	
BMI×ROM					NS*	
WHtR	253.53	52.62	147.01	, 360.06	<b>&lt;0.001</b>	
ROM	0.17	0.4	-0.639	, 0.98	0.673	
WHtR×ROM					NS*	
BF%	2.374	0.402	1.56	, 3.189	<b>&lt;0.001</b>	
ROM	-0.064	0.392	-0.859	, 0.73	0.871	
BF%×ROM					NS*	

The markers of inflammation were high sensitivity C-reactive protein (hsCRP), interleukin 6 (IL-6) and leptin. The markers of body mass/adiposity were body mass index (BMI), waist-to-height ratio (WHtR) and body fat percentage (BF%); ROM, range of motion (ROM).

B, unstandardized regression coefficient indicating the expected unit change in the dependent variable for one-unit change in the independent variable; SE, standard error; NS, non-significant.

Quantile regression models were built including each inflammatory marker as dependent variable in separate models and the body mass or adiposity indicator, ROM, and the body mass/adiposity×ROM interaction as independent variables. All the analyses were adjusted for age, SLEDAI, and accumulated corticosteroid intake. When the interaction was not significant, the interaction term was removed from the regression model and the results are presented without interaction (i.e., the independent association of body mass/adiposity and ROM with the inflammatory marker).

both BMI, and with lower increase in hsCRP per additional unit of body fat percentage. Evidence regarding the role of range of motion on health in patients with SLE is scarce, although its potential has recently gained attention in other populations (39–41). For instance, greater range of motion has been related with lower cardiometabolic risk (42) and a more favorable cardiovascular profile (43) in perimenopausal women, and with lower risk of metabolic syndrome in older adults (44). Further research on the association of range of motion with health-related parameters in autoimmune diseases is needed. Taken together, these findings suggest that the low-grade

inflammatory profile associated with higher body mass and adiposity in SLE could be attenuated in people with higher range of motion, which also needs to be confirmed or contrasted.

Our results corroborated prior research underlining that higher body mass and adiposity is associated with higher leptin concentrations (45, 46). However, we failed to observe that fitness attenuated the association of body mass and adiposity with leptin. In fact, higher muscular strength was surprisingly related to higher increase in leptin per additional unit of body fat percentage. This particular result is difficult to explain and further research is needed to understand the rationale behind

**TABLE 4** | Quantile regression analyses assessing the interaction of body mass/adiposity with muscular strength on inflammatory markers.

hsCRP						
	B	SE	95% CI		p	
BMI	0.181	0.056	0.069	, 0.293	<b>0.002</b>	
HGS	-0.05	0.052	-0.154	, 0.054	0.342	
BMI×HGS					NS*	
WHtR	5.574	4.352	-3.109	, 14.258	0.205	
HGS	-0.038	0.062	-0.162	, 0.085	0.539	
WHtR×HGS					NS*	
BF%	0.054	0.033	-0.011	, 0.121	0.103	
HGS	-0.026	0.057	-0.141	, 0.089	0.653	
BF%×HGS					NS*	
IL-6						
	B	SE	95% CI		p	
BMI	0.067	0.187	-0.312	, 0.446	0.723	
HGS	-0.013	0.163	-0.342	, 0.317	0.939	
BMI×HGS					NS*	
WHtR	0.407	9.671	-19.17	, 19.98	0.967	
HGS	0.002	0.114	-0.228	, 0.233	0.983	
WHtR ×HGS					NS*	
BF%	0.571	0.276	0.012	, 1.129	<b>0.046</b>	
HGS	0.751	0.429	-0.118	, 0.354	0.989	
BF%×HGS	-0.021	0.107	-0.043	, 0	0.057	
Leptin						
	B	SE	95% CI		p	
BMI	3.193	0.526	2.128	, 4.259	<b>&lt;0.001</b>	
HGS	-0.282	0.564	-1.424	, 0.859	0.619	
BMI×HGS					NS*	
WHtR	264.53	35.574	192.52	, 336.55	<b>&lt;0.001</b>	
HGS	0.543	0.5	-0.47	, 1.557	0.285	
WHtR×HGS					NS*	
BF%	-0.231	1.094	-2.448	, 1.985	0.834	
HGS	-3.095	1.735	-6.611	, 0.42	0.083	
BF%×HGS	0.106	0.043	0.019	, 0.194	<b>0.018</b>	

The markers of inflammation were high sensitivity C-reactive protein (hsCRP), interleukin 6 (IL-6) and leptin. The markers of body mass/adiposity were body mass index (BMI), waist-to-height ratio (WHtR) and body fat percentage (BF%); HGS, handgrip strength (HGS).

B, unstandardized regression coefficient indicating the expected unit change in the dependent variable for one-unit change in the independent variable; SE, standard error NS, non-significant.

Quantile regression models were built including each inflammatory marker as dependent variable in separate models and the body mass or adiposity indicator, HGS, and the body mass/adiposity×HGS interaction as independent variables. All the analyses were adjusted for age, SLEDAI, and accumulated corticosteroid intake. When the interaction was not significant, the interaction term was removed from the regression model and the results are presented without interaction (i.e., the independent association of body mass/adiposity and HGS with the inflammatory marker).

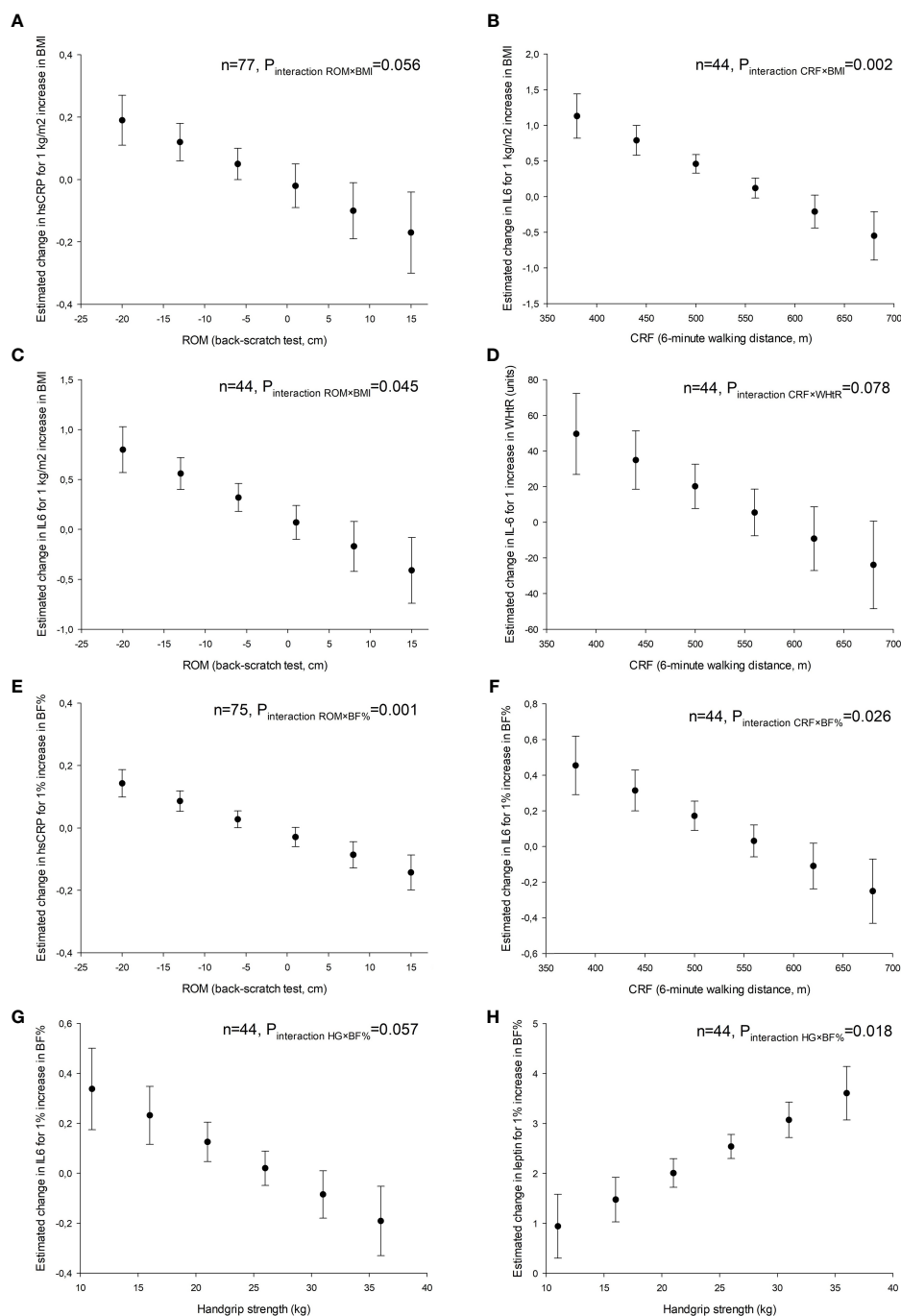
it. In fact, previous research showed that resistance training decreases plasma leptin levels in elderly women (47), which to some extent contrasts this observation.

Physical fitness has previously shown to attenuate the detrimental effect that obesity has on cardiovascular mortality in the general population (48). We might speculate that one of the mechanisms by which fitness attenuates this association is through attenuating the impact of obesity on inflammation. Obesity is present in almost 50% of women with SLE (8) and adipose tissue has the capacity not only to recruit and activate mononuclear cells (49) but also to produce key inflammatory cytokines, such as IL-6, which stimulates the production of CRP

and other acute phase proteins by the liver (50). Therefore, the potential role of fitness in this association is of research and clinical relevance and requires further investigation, particularly in autoimmune diseases, because all the components of fitness can be enhanced through exercise programs.

This study has limitations. The cross-sectional design precludes establishment of causal relationships; therefore, we do not know whether increasing fitness through exercise programs will have an impact on the obesity-inflammation relationship. The sample size was relatively small, particularly for the leptin and IL-6 analyses, and thus they need to be confirmed or contrasted in future prospective and experimental research with larger sample sizes.





**FIGURE 2** | Graphical representation of the interaction of body mass and adiposity with physical fitness on inflammation in women with systemic lupus erythematosus. **(A, C, E)** ROM, upper-body range of motion assessed by the back-scratch test. **(B, D, F)** CRF, cardiorespiratory fitness assessed by the distance walked in the 6-minute walk test. **(G, H)** Muscular strength assessed with handgrip dynamometry. BMI, body mass index; BF%, body fat percentage; WHtR, waist-to-height ratio; hsCRP, high sensitivity C-reactive protein; IL6, interleukin6.

Finally, the study was performed only in women with SLE with low or inactive disease; thus, we do not know whether these results apply to men or to women with higher disease activity.

In conclusion, the findings of the present study suggest that higher levels of physical fitness, particularly cardiorespiratory fitness and

range of motion, might attenuate the association of higher body mass and adiposity with inflammation in women with SLE. These results underline a potential mechanism by which fitness might mitigate the effect of obesity on cardiovascular disease, although they must be corroborated in future prospective and experimental research.

## DATA AVAILABILITY STATEMENT

The original contributions presented in the study are included in the article/supplementary material. Further inquiries can be directed to the corresponding author.

## ETHICS STATEMENT

The studies involving human participants were reviewed and approved by the Research Ethics Committee of Granada. The participants provided written informed consent to participate in this study.

## AUTHOR CONTRIBUTIONS

Conceptualization, SS-R, JV-H, and AS-M. Data curation, JVH and AS-M. Formal analysis, SS-R, BG-C, and AS-M. Funding acquisition, JVH, JS, and AS-M. Investigation, SS-R, JVH, BG-C, AR-C, RR-F, JM, and AS-M. Methodology, BG-C, JV-H, and AS-M. Project administration, JV-H. Resources, AR-C, RR-F, JM, and AS-M. Supervision JV-H and AS-M. Visualization, AR-C. Writing—Original draft, SS-R, JVH, and AS-M. Writing—Review & editing, SS-R, JV-H, BG-C, AR-C, RR-F, JS, and AS-M.

## REFERENCES

1. Kravvariti E, Konstantonis G, Sfikakis PP, Tektonidou MG. Progression of Subclinical Atherosclerosis in Systemic Lupus Erythematosus Versus Rheumatoid Arthritis: The Impact of Low Disease Activity. *Rheumatol (Oxford)* (2018) 57:2158–66. doi: 10.1093/rheumatology/key233
2. Versini M, Jeandel PY, Rosenthal E, Shoenfeld Y. Obesity in Autoimmune Diseases: Not a Passive Bystander. *Autoimmun Rev* (2014) 13:981–1000. doi: 10.1016/j.autrev.2014.07.001
3. Mok CC. Metabolic Syndrome and Systemic Lupus Erythematosus: The Connection. *Expert Rev Clin Immunol* (2019) 15:765–75. doi: 10.1080/1744666X.2019.1620601
4. Oeser A, Chung CP, Asanuma Y, Avalos I, Stein CM. Obesity is an Independent Contributor to Functional Capacity and Inflammation in Systemic Lupus Erythematosus. *Arthritis Rheum* (2005) 52:3651–9. doi: 10.1002/art.21400
5. Correa-Rodriguez M, Pocovi-Gerardino G, Callejas Rubio JL, Rios-Fernández R, Martín Amada M, Cruz Caparrós M, et al. The Impact of Obesity on Disease Activity, Damage Accrual, Inflammation Markers and Cardiovascular Risk Factors in Systemic Lupus Erythematosus. *Painminerva Med* (2020) 62(2):75–82. doi: 10.23736/S0031-0808.19.03748-0
6. Weissberg PL, Bennett MR. Atherosclerosis: An Inflammatory Disease. *N Engl J Med* (1999) 340:1928–9. doi: 10.1056/NEJM199906173402418
7. Van Raemdonck K, Umar S, Szekanez Z, Zomorodi RK, Shahrara S. Impact of Obesity on Autoimmune Arthritis and its Cardiovascular Complications. *Autoimmun Rev* (2018) 17:821–35. doi: 10.1016/j.autrev.2018.02.007
8. Katz P, Gregorich S, Yazdany J, Trupin L, Julian L, Yelin E, et al. Obesity and Its Measurement in a Community-Based Sample of Women With Systemic Lupus Erythematosus. *Arthritis Care Res (Hoboken)* (2011) 63:261–8. doi: 10.1002/acr.20343
9. Ortega FB, Sui X, Lavie CJ, Blair SN. Body Mass Index, the Most Widely Used But Also Widely Criticized Index: Would a Criterion Standard Measure of Total Body Fat Be a Better Predictor of Cardiovascular Disease Mortality? *Mayo Clin Proc* (2016) 91:443–55. doi: 10.1016/j.mayocp.2016.01.008
10. Corrêa MM, Facchini LA, Thumé E, Oliveira ERA, Tomasi E. The Ability of Waist-To-Height Ratio to Identify Health Risk. *Rev Saude Publica* (2019) 23:53–66. doi: 10.11606/s1518-8787.2019053000895

All authors contributed to the article and approved the submitted version.

## FUNDING

This work was funded by the Consejería de Salud, Junta de Andalucía (grant numbers: PI-0525-2016 and PIER-0223-2019). BG-C was supported by the Spanish Ministry of Education (FPU15/00002). AS-M was supported by the Spanish Ministry of Science, Innovation and Universities (ref. RTI2018–093302-A-I00). The funders had no role in the study design, data collection and analysis, decision to publish, or preparation of the manuscript.

## ACKNOWLEDGMENTS

The authors would like to thank the members of the Autoimmune Diseases Unit at the “Virgen de las Nieves” University Hospital (i.e. Nuria Navarrete-Navarrete, Mónica Zamora-Pasadas and Juan Jiménez-Alonso) as well as Luis Manuel Sáez-Urán and Cristina Montalbán-Méndez for their support during data collection and study design. The study participants are also gratefully acknowledged for their collaboration.

11. Linauskas A, Overvad K, Symmons D, Johansen MB, Stengaard-Pedersen K, de Thurah A. Body Fat Percentage, Waist Circumference, and Obesity As Risk Factors for Rheumatoid Arthritis: A Danish Cohort Study. *Arthritis Care Res (Hoboken)* (2019) 71(6):777–86. doi: 10.1002/acr.23694
12. Ortega FB, Cadenas-Sanchez C, Lee DC, Ruiz JR, Blair SN, Sui X. Fitness and Fatness as Health Markers Through the Lifespan: An Overview of Current Knowledge. *Prog Prev Med (N Y)* (2018) 3(2):e0013. doi: 10.1097/pp9.0000000000000013
13. Kodama S, Saito K, Tanaka S, Maki M, Yachi Y, Asumi M, et al. Cardiorespiratory Fitness as a Quantitative Predictor of All-Cause Mortality and Cardiovascular Events in Healthy Men and Women: A Meta-Analysis. *JAMA* (2009) 301:2024–35. doi: 10.1001/jama.2009.681
14. Metsios GS, Koutedakis Y, Veldhuijzen van Zanten JJ, Stavropoulos-Kalinoglou A, Vitalis P, Duda JL, et al. Cardiorespiratory Fitness Levels and Their Association With Cardiovascular Profile in Patients With Rheumatoid Arthritis: A Cross-Sectional Study. *Rheumatol (Oxford)* (2015) 54:2215–20. doi: 10.1093/rheumatology/kev035
15. Soriano-Maldonado A, Ruiz JR, Aparicio VA, Estevez-López F, Segura-Jimenez V, Alvarez-Gallardo IC, et al. Association of Physical Fitness With Pain in Women With Fibromyalgia: The Al-Andalus Project. *Arthritis Care Res (Hoboken)* (2015) 67:1561–70. doi: 10.1002/acr.22610
16. Montalbán-Méndez C, Soriano-Maldonado A, Vargas-Hitos JA, Sáez-Urán LM, Rosales-Castillo A, Morillas-de-Laguno P, et al. Cardiorespiratory Fitness and Age-Related Arterial Stiffness in Women With Systemic Lupus Erythematosus. *Eur J Clin Invest* (2018) 48(3). doi: 10.1111/eci.12885
17. Pinto AJ, Miyake CN, Benatti FB, Silva CA, Sallum AM, Borba E, et al. Reduced Aerobic Capacity and Quality of Life in Physically Inactive Patients With Systemic Lupus Erythematosus With Mild or Inactive Disease. *Arthritis Care Res* (2016) 68:1780–6. doi: 10.1002/acr.22905
18. Andrews JS, Trupin L, Schmajuk G, Barton J, Margaretten M, Yazdany J, et al. Muscle Strength, Muscle Mass, and Physical Disability in Women With Systemic Lupus Erythematosus. *Arthritis Care Res (Hoboken)* (2015) 67:120–7. doi: 10.1002/acr.22399
19. Balsamo S, da Mota LM, de Carvalho JF, Nascimento Dda C, Tibana RA, de Santana FS, et al. Low Dynamic Muscle Strength and its Associations With Fatigue, Functional Performance, and Quality of Life in Premenopausal Patients With Systemic Lupus Erythematosus and Low Disease Activity: A Case–Control Study. *BMC Musculoskelet Disord* (2013) 14:263. doi: 10.1186/1471-2474-14-263

20. Harber MP, Kaminsky LA, Arena R, Blair SN, Franklin BA, Myers J, et al. Impact of Cardiorespiratory Fitness on All-Cause and Disease-Specific Mortality: Advances Since 2009. *Prog Cardiovasc Dis* (2017) 60:11–20. doi: 10.1016/j.pcad.2017.03.001
21. Hochberg MC. Updating the American College of Rheumatology Revised Criteria for the Classification of Systemic Lupus Erythematosus. *Arthritis Rheum* (1997) 40:1725. doi: 10.1002/art.1780400928
22. Soriano-Maldonado A, Morillas-de-Laguno P, Sabio JM, Gavilán-Carrera B, Rosales-Castillo A, Montalbán-Méndez C, et al. Effects of 12-Week Aerobic Exercise on Arterial Stiffness, Inflammation, and Cardiorespiratory Fitness in Women With Systemic LUPUS Erythematosus: Non-Randomized Controlled Trial. *J Clin Med* (2018) 7(12):477. doi: 10.3390/jcm7120477
23. Gavilán-Carrera B, Vargas-Hitos JA, Morillas-de-Laguno P, Rosales-Castillo A, Sola-Rodríguez S, Callejas-Rubio JL, et al. Effects of 12-Week Aerobic Exercise on Patient-Reported Outcomes in Women With Systemic Lupus Erythematosus [Published Online Ahead of Print 2020 Sep 2]. *Disabil Rehabil* (2020), 1–9. doi: 10.1080/09638288.2020.1808904
24. Rikli RE, Jones CJ. Development and Validation of a Functional Fitness Test for Community-Residing Older Adults. *J Aging Phys Act* (1999) 7:129–61. doi: 10.1123/japa.7.2.129
25. Fidler L, Keen KJ, Touma Z, Mittoo S. Impact of Pulmonary Disease on Patient-Reported Outcomes and Patient-Performed Functional Testing in Systemic Lupus Erythematosus. *Lupus* (2016) 25:1004–11. doi: 10.1177/0961203316630818
26. Soriano-Maldonado A, Estevez-Lopez F, Segura-Jimenez V, Aparicio V, Álvarez-Gallardo IC, Herrador-Colmenero M, et al. Association of Physical Fitness With Depression in Women With Fibromyalgia. *Pain Med* (2016) 17:1542–52. doi: 10.1093/pm/pnv036
27. Pugnet G, Marjanovic Z, Deligny C, Boussardon K, Benzidia I, Puyade M, et al. Reproducibility and Utility of the 6-Minute Walk Test in Systemic Sclerosis. *J Rheumatol* (2018) 45:1273–80. doi: 10.3899/jrheum.170994
28. Ruiz-Ruiz J, Mesa JL, Gutiérrez A, Castillo MJ. Hand Size Influences Optimal Grip Span in Women But Not in Men. *J Handb Surg Am* (2002) 27:897–901. doi: 10.1053/jhsu.2002.34315
29. Griffiths B, Mosca M, Gordon C. Assessment of Patients With Systemic Lupus Erythematosus and the Use of Lupus Disease Activity Indices. *Best Pract Res Clin Rheumatol* (2005) 19:685–708. doi: 10.1016/j.berh.2005.03.010
30. Wei W, Tölle M, Zidek W, van der Giet M. Validation of the Mobil-O-Graph: 24 H-Blood Pressure Measurement Device. *Blood Press Monit* (2010) 15:225–8. doi: 10.1097/MBP.0b013e328338892f
31. Kippen Y, Briganti EM, Strauss BJ, Littlejohn GO, Morand EF. Three Year Follow-Up of Body Composition Changes in Pre-Menopausal Women With Systemic Lupus Erythematosus. *Rheumatol (Oxford)* (1999) 38:59–65. doi: 10.1093/rheumatology/38.1.59
32. Delgado C, Chertow GM, Kaysen GA, Dalrymple LS, Kornak J, Grimes B, et al. Associations of Body Mass Index and Body Fat With Markers of Inflammation and Nutrition Among Patients Receiving Hemodialysis. *Am J Kidney Dis* (2017) 70:817–25. doi: 10.1053/j.ajkd.2017.06.028
33. Hosseinzadeh-Attar MJ, Golpaie A, Foroughi M, Hosseinpanah F, Zahediasl S, Azizi F. The Relationship Between Visfatin and Serum Concentrations of C-Reactive Protein, Interleukin 6 in Patients With Metabolic Syndrome. *J Endocrinol Invest* (2016) 39:917–22. doi: 10.1007/s40618-016-0457-1
34. Visser M, Bouter LM, McQuillan GM, Wener MH, Harris TB. Elevated C-Reactive Protein Levels in Overweight and Obese Adults. *JAMA* (1999) 282:2131–5. doi: 10.1001/jama.282.22.2131
35. Park E, Meininger JC, Kang DH, Gabriel KP, Padhye NS. Association of Cardiorespiratory Fitness and Adiposity With Inflammatory Biomarkers in Young Adults. *Am J Hum Biol* (2017) 29(3). doi: 10.1002/ajhb.22959
36. Bergens O, Nilsson A, Kadi F. Cardiorespiratory Fitness Does Not Offset Adiposity-Related Systemic Inflammation in Physically Active Older Women. *J Clin Endocrinol Metab* (2019) 104:4119–26. doi: 10.1210/jc.2019-00067
37. Sola-Rodríguez S, Gavilán-Carrera B, Vargas-Hitos JA, Sabio JM, Morillas-de-Laguno P, Soriano-Maldonado A. Physical Fitness and Body Composition in Women With Systemic Lupus Erythematosus. *Medicina (Kaunas)* (2019) 55(2):57. doi: 10.3390/medicina55020057
38. Gavilán-Carrera B, Garcia da Silva J, Vargas-Hitos JA, Sabio JM, Morillas-de-Laguno P, Rios-Fernández R, et al. Association of Physical Fitness Components and Health-Related Quality of Life in Women With Systemic Lupus Erythematosus With Mild Disease Activity. *PLoS One* (2019) 14(2). doi: 10.1371/journal.pone.0212436
39. Bouaziz W, Lang PO, Schmitt E, Kaltenbach G, Geny B, Vogel T. Health Benefits of Multicomponent Training Programmes in Seniors: A Systematic Review. *Int J Clin Pract* (2016) 70:520–36. doi: 10.1111/ijcp.12822
40. Musumeci G. Effects of Exercise on Physical Limitations and Fatigue in Rheumatic Diseases. *World J Orthop* (2015) 6:762–9. doi: 10.5312/wjo.v6.i10.762
41. Galloza J, Castillo B, Micheo W. Benefits of Exercise in the Older Population. *Phys Med Rehabil Clin N Am* (2017) 28:659–69. doi: 10.1016/j.pmr.2017.06.001
42. Gregorio-Arenas E, Ruiz-Cabello P, Camiletti-Moirón D, Moratalla-Cecilia N, Aranda P, López-Jurado M, et al. The Associations Between Physical Fitness and Cardiometabolic Risk and Body-Size Phenotypes in Perimenopausal Women. *Maturitas* (2016) 92:162–7. doi: 10.1016/j.maturitas.2016.08.008
43. Acosta-Manzano P, Segura-Jiménez V, Coll-Risco I, Borges-Cosic M, Castro-Piñero J, Delgado-Fernández M, et al. Association of Sedentary Time and Physical Fitness With Ideal Cardiovascular Health in Perimenopausal Women: The FLAMENCO Project. *Maturitas* (2019) 120:53–60. doi: 10.1016/j.maturitas.2018.11.015
44. Chang KV, Hung CY, Li CM, Lin YH, Wang TG, Tsai KS, et al. Reduced Flexibility Associated With Metabolic Syndrome in Community-Dwelling Elders. *PLoS One* (2015) 10(1). doi: 10.1371/journal.pone.0117167
45. Landecho MF, Tuero C, Valenti V, Bilbao I, de la Higuera M, Frühbeck G. Relevance of Leptin and Other Adipokines in Obesity-Associated Cardiovascular Risk. *Nutrients* (2019) 11(11):2664. doi: 10.3390/nu11112664
46. Francisco V, Pino J, Campos-Cabaleiro V, Ruiz-Fernández C, Mera A, Gonzalez-Gay MA, et al. Obesity, Fat Mass and Immune System: Role for Leptin. *Front Physiol* (2018) 9:640. doi: 10.3389/fphys.2018.00640
47. Bouassida A, Chamari K, Zaouali M, Feki Y, Zbidi A, Tabka Z. Review on Leptin and Adiponectin Responses and Adaptations to Acute and Chronic Exercise. *Br J Sports Med* (2010) 44:620–30. doi: 10.1136/bjism.2008.046151
48. Lavie CJ, Deedwania P, Ortega FB. Obesity is Rarely Healthy. *Lancet Diabetes Endocrinol* (2018) 6:678–9. doi: 10.1016/S2213-8587(18)30143-8
49. Ghanim H, Aljada A, Hofmeyer D, Syed T, Mohanty P, Dandona P. Circulating Mononuclear Cells in the Obese Are in a Proinflammatory State. *Circulation* (2004) 110:1564–71. doi: 10.1161/01.CIR.0000142055.53122.FA
50. Kershaw EE, Flier JS. Adipose Tissue as an Endocrine Organ. *J Clin Endocrinol Metab* (2004) 89:2548–56. doi: 10.1210/jc.2004-0395

**Conflict of Interest:** The authors declare that the research was conducted in the absence of any commercial or financial relationships that could be construed as a potential conflict of interest.

**Publisher's Note:** All claims expressed in this article are solely those of the authors and do not necessarily represent those of their affiliated organizations, or those of the publisher, the editors and the reviewers. Any product that may be evaluated in this article, or claim that may be made by its manufacturer, is not guaranteed or endorsed by the publisher.

Copyright © 2021 Sola-Rodríguez, Vargas-Hitos, Gavilán-Carrera, Rosales-Castillo, Ríos-Fernández, Sabio and Soriano-Maldonado. This is an open-access article distributed under the terms of the Creative Commons Attribution License (CC BY). The use, distribution or reproduction in other forums is permitted, provided the original author(s) and the copyright owner(s) are credited and that the original publication in this journal is cited, in accordance with accepted academic practice. No use, distribution or reproduction is permitted which does not comply with these terms.