



Continuous Exposure to Non-Soluble β -Glucans Induces Trained Immunity in M-CSF-Differentiated Macrophages

Bart G. J. Moerings^{1,2†}, Priscilla de Graaff^{1,3†}, Matthew Furber⁴, Renger F. Witkamp², Reno Debets³, Jurriaan J. Mes¹, Jeroen van Bergenhenegouwen^{4‡} and Coen Govers^{1,5*‡}

OPEN ACCESS

Edited by:

Philip Calder,
University of Southampton,
United Kingdom

Reviewed by:

Vaclav Vetvicka,
University of Louisville, United States
Aaron Neumann,
University of New Mexico,
United States

*Correspondence:

Coen Govers
Coen.govers@wur.nl

[†]These authors have contributed
equally to this work and
share first authorship

[‡]These authors have contributed
equally to this work and
share last authorship

Specialty section:

This article was submitted to
Nutritional Immunology,
a section of the journal
Frontiers in Immunology

Received: 26 February 2021

Accepted: 13 May 2021

Published: 02 June 2021

Citation:

Moerings BGJ, de Graaff P,
Furber M, Witkamp RF, Debets R,
Mes JJ, van Bergenhenegouwen J
and Govers C (2021) Continuous
Exposure to Non-Soluble β -Glucans
Induces Trained Immunity in M-CSF-
Differentiated Macrophages.
Front. Immunol. 12:672796.
doi: 10.3389/fimmu.2021.672796

¹ Wageningen Food and Biobased Research, Wageningen University & Research, Wageningen, Netherlands, ² Nutritional Biology Group, Division of Human Nutrition and Health, Wageningen University & Research, Wageningen, Netherlands, ³ Laboratory of Tumor Immunology, Department of Medical Oncology, Erasmus Medical Center (MC)-Cancer Institute, Rotterdam, Netherlands, ⁴ Danone Nutricia Research, Utrecht, Netherlands, ⁵ Cell Biology and Immunology Group, Department of Animal Sciences, Wageningen University & Research, Wageningen, Netherlands

Beta-glucans enable functional reprogramming of innate immune cells, a process defined as “trained immunity”, which results in enhanced host responsiveness against primary (training) and/or secondary infections (resilience). Trained immunity holds great promise for promoting immune responses in groups that are at risk (e.g. elderly and patients). In this study, we modified an existing *in vitro* model for trained immunity by actively inducing monocyte-to-macrophage differentiation using M-CSF and applying continuous exposure. This model reflects mucosal exposure to β -glucans and was used to study the training effects of a variety of soluble or non-soluble β -glucans derived from different sources including oat, mushrooms and yeast. In addition, trained immunity effects were related to pattern recognition receptor usage, to which end, we analyzed β -glucan-mediated Dectin-1 activation. We demonstrated that β -glucans, with different sources and solubilities, induced training and/or resilience effects. Notably, trained immunity significantly correlated with Dectin-1 receptor activation, yet Dectin-1 receptor activation did not perform as a sole predictor for β -glucan-mediated trained immunity. The model, as validated in this study, adds on to the existing *in vitro* model by specifically investigating macrophage responses and can be applied to select non-digestible dietary polysaccharides and other components for their potential to induce trained immunity.

Keywords: β -glucan, trained immunity, macrophage model, resilience, dectin-1

INTRODUCTION

An important feature of the adaptive immune system is the ability to develop long-lasting memory responses. Over the past years, it has been clearly established that innate immune cells also retain a memory of previous challenges with the long-recognized hypo responsiveness following lipopolysaccharide challenges (LPS tolerance) and, the more recent established, hyper responsiveness following β -glucan challenges (trained innate immunity) (1, 2). These properties

of innate immune cells have been termed ‘innate immune memory’ and are a consequence of long-term functional reprogramming of innate immune cells following an initial trigger (3). First indications for trained innate immunity in humans emerged from epidemiological studies on vaccine responses. In these studies, it was established that vaccination did not only lead to protection against a specific pathogen, but also to cross-protection against unrelated pathogens (4). The best described example is that of *Bacillus Calmette-Guérin* (BCG) vaccination against *Mycobacterium tuberculosis*, reducing neonatal mortality due to sepsis, respiratory infection, and fever (4). Next to offering cross-protection against pathogens, vaccination with BCG has also been shown to elicit anti-tumor immune effects. BCG vaccination reduced melanoma burden in adults but also associated with a reduced risk of developing melanomas in newborns (5–8). Preclinically, the pre-treatment of mice with a fungal β -glucan resulted in diminished tumor growth mediated through epigenetic effects on innate effector cells, providing evidence for the anti-cancer effects of immune training (9). These observations suggest that enhanced immune responses as a result of trained innate immunity might also be beneficial in immunotolerant states such as cancer.

Several studies have now shown that tolerance, a counter-regulatory mechanism to protect against collateral tissue damage in response to inflammation, can be reversed by induction of trained immunity to reinstate cytokine production upon re-challenge (10, 11). A study in healthy volunteers showed that β -glucan treatment resulted in enhanced responsiveness both by *in vivo* as well as *ex vivo* LPS-tolerized monocytes (11). Reversal of tolerance could be especially relevant for hospitalized elderly patients who often suffer from an attenuated immune response as a consequence of a previous insult, leading to increased susceptibility to secondary infections such as pneumonia (12). Recent data would suggest that supplementation of elderly with β -glucans could offer increased protection against the development of upper respiratory tract infections (13).

Trained innate immunity can be induced by a number of compounds containing danger-associated molecular patterns (DAMPs) or microbe-associated molecular patterns (MAMPs), such as oxidized low density lipoprotein (oxLDL), raw bovine milk and fungal cell wall derived β -glucans (13–15). In fact, yeast β -glucans are one of the best characterized stimuli to induce trained innate immunity (16, 17). Beta-glucans are large polysaccharides produced by a large variety of eukaryotic and prokaryotic organisms. All β -glucans share the same β -1,3-glucan backbone, however, the source and extraction methods determine the β -1,4 or β -1,6 branching patterns, insertions and impurities in the final commercial preparation (18, 19). While for some β -glucans such as oat (20), zymosan (21) and baker’s yeast (22) immune-modulatory activities have been described, for many others it is still unknown. The recognition of β -glucans by various immune cells is dependent on specific pattern recognition receptors (PRRs), which can initiate numerous downstream responses, including phagocytosis, respiratory burst, and secretion of cytokines and chemokines (23). Interestingly, immune cells derived from individuals deficient

for the PRR Dectin-1 could not be trained with fungal β -glucans, which suggest that the C-type Lectin Dectin-1 is the primary candidate to confer innate immune training by β -glucans upon innate immune cells (24). Small intestinal routes of nutrient uptake can include capture by phagocytic immune cells through direct luminal sampling or the M-cell/Peyer’s patch route (25, 26). For β -glucans specifically, capture by gut-associated lymphoid tissue (GALT)-associated immune cells and/or epithelial cells has been demonstrated (27). Once internalized, β -glucan containing immune cells can travel to the different organs of the immune system where smaller β -glucan fragments are released over several days to further interact with immune cells via complement receptor 3 (CR3) and to modulate the functional capacity of immune cells (28, 29). These bioavailability studies were performed in mice and it remains to be determined whether it works similarly in humans. However, clinical efficacy data on β -glucan interventions and described effects on supporting innate immune functions would support a comparable mechanism (30).

The currently existing trained immunity model is not dedicated to investigate macrophage responses to continued oral exposure to β -glucans. In addition, limited β -glucans have been tested to provide insight into which physicochemical properties relate to induction of trained immunity. Therefore, we aimed to modify the current trained immunity model to reflect mucosal β -glucan exposure by introducing M-CSF-differentiated macrophages as well as continued exposure to β -glucans. To this end, we tested a broad panel of different commercially available dietary β -glucans for their potency to induce training and resilience. Metabolic and secretory markers of trained immunity were correlated to Dectin-1 activation with the aim to determine whether Dectin-1 activation could be a substitute for trained immunity in determining the potency of β -glucans.

MATERIALS AND METHODS

Reagents

We used nine different β -glucans as previously described (31); yeast-a (Megazyme, Bray, Ireland), yeast-b (Immitec, Tonsberg, Norway), zymosan (InvivoGen, Toulouse, France), yWGP (InvivoGen) (all yeast-derived), curdlan [bacteria-derived, *Alcaligenes faecali*, (Megazyme)], lentinan [*Lentinula edodus* (31)], grifolan (*Grifola frondosa* [Hangzhou New Asia International Co., Ltd, Hangzhou, China]), schizophyllan [*Schizophyllum commune* (InvivoGen)] (all fungi-derived), and oat β G [oat-derived, (Megazyme)]. Their characteristics, such as solubility, protein content, molecular weight distribution, branching and linkages, monosaccharide composition, total saccharide content (*i.e.* purity) as well as LPS/LTA contamination levels have been reported previously (31).

Isolation and Culture of Human Monocytes

Buffy coats from healthy donors were collected after written informed consent (Sanquin, Nijmegen, The Netherlands). Isolation of human peripheral blood mononuclear cells

(PBMCs) was performed by dilution of the buffy coat fractions 1:1 with sterile phosphate-buffered saline (PBS) (Sigma Aldrich, Zwijndrecht, The Netherlands) containing 2% fetal bovine serum (FBS) (HyClone™ Fetal Bovine Serum, Fisher Scientific, Loughborough, UK) and loading onto Greiner Bio-One™ LeucoSEP™ Polypropylene Tubes that were pre-loaded with 15 ml Ficoll-Paque plus (GE Healthcare Life Sciences). Cells were centrifuged at 200xg for 5 min followed by centrifugation at 500xg for 10 min. The interface layer, containing PBMCs, was isolated and the cells were washed three times in PBS containing 2% FBS. After washing, cells were diluted in 8 ml MACS buffer (2 mM EDTA, 2% FBS in PBS), after which 1 ml of CD14 microbeads (Miltenyi Biotec, Leiden, The Netherlands) was added per buffy coat followed by an incubation step for 15 min at 4°C and mixing every 5 min. Cells were washed and resuspended in 0.5 ml MACS buffer, and monocytes were isolated using positive selection with the quadromaMACS system and LS Columns according to the manufacturer's protocol (Miltenyi Biotec). Sorted cells were frozen in FBS with 10% dimethyl sulfoxide (DMSO) (Sigma Aldrich) and stored in liquid nitrogen.

Training and Resilience Model for Human Monocytes

Monocytes (500,000 cells/well) were added to 24-well tissue culture (TC) plates (Corning Costar, New York, NY, USA) and incubated for 24 h at 37°C in RPMI 1640 – Glutamax – HEPES medium (Gibco, Bleiswijk, The Netherlands) supplemented with 10% FBS, 1% MEM with non-essential amino acids (Gibco), 1%

Na-pyruvate (Gibco), 1% Pen/strep (Gibco) with or without 50 ng/ml macrophage colony-stimulating factor (M-CSF) (R&D systems, Minneapolis, MN, USA) in a total volume of 1 ml for 24 h at 37°C. Next, monocytes were stimulated by adding fresh medium, 5 μ g/ml β -glucan, 10 ng/ml LPS (LPS derived from *Escherichia coli* O111:B4, Sigma Aldrich) or a combination of 5 μ g/ml β -glucan and 10 ng/ml LPS with or without 50 ng/ml M-CSF (see **Figure 1**). After 24 h of stimulation, cells were washed once with pre-warmed medium, after which culture medium with or without 50 ng/ml M-CSF was added for another 5 days to start monocyte differentiation. At day 7, macrophages were stimulated for 24 h with 10 ng/ml LPS, after which the supernatant was collected and stored at -20°C for further analysis (see **Figure 1**). Alternatively, during the 5 day incubation period, monocytes were exposed to 5 μ g/ml β -glucan and 50 ng/ml of M-CSF and the medium was collected and stored at -20°C for further analysis.

Reporter Assay

The NF κ B reporter cell lines HEK-Blue™ Null1-v cells, HEK-Blue™-hDectin-1a and HEK-Blue™-hDectin-1b (InvivoGen) were cultured and maintained in high glucose DMEM GlutaMAX™ (Gibco) supplemented with 10% heat-inactivated FBS (Gibco). These reporter cell lines overexpress the Secreted Embryonic Alkaline Phosphatase (SEAP) reporter gene driven by an NF κ B-inducible promoter. All reporter assays were performed according to the manufacturer's protocol. Briefly, cell passage was performed by trypsinization with 0.05% trypsin-EDTA (Life Technologies) and a split ratio of 1:10 was used. All cell lines

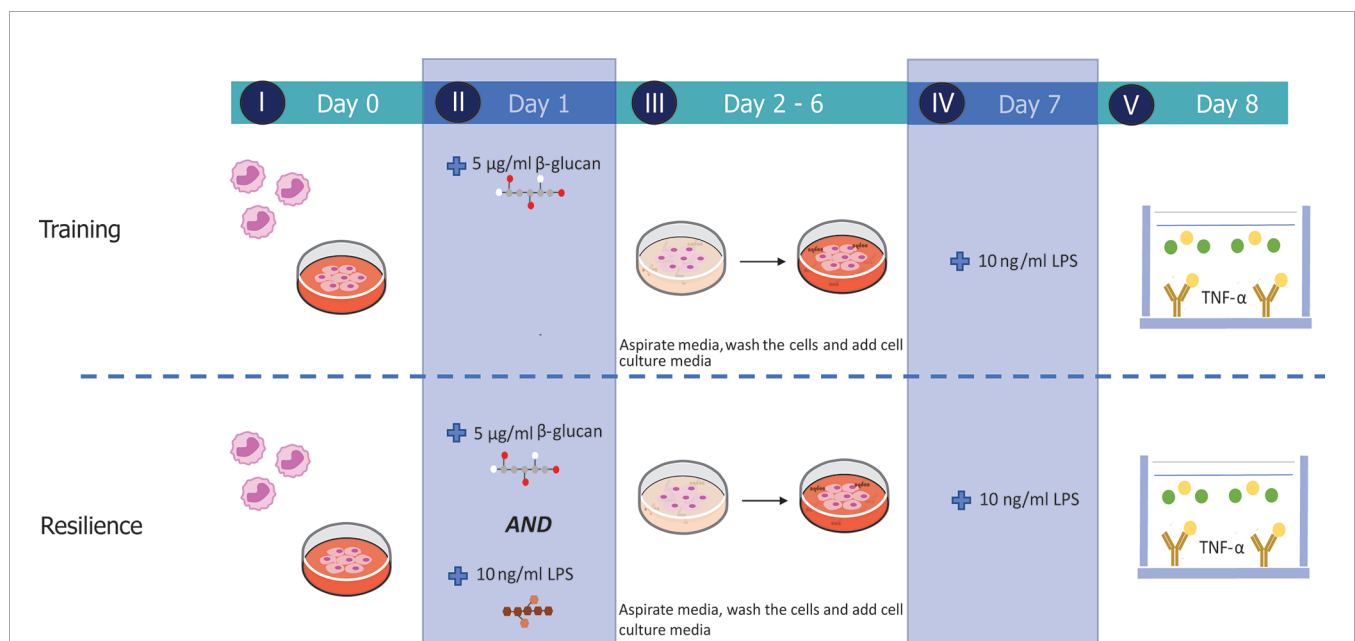


FIGURE 1 | Experimental set-up of the established *in vitro* training and resilience protocols. Monocytes were retrieved from cryogenic vials and allowed to settle for 24 h (I) before cells were stimulated with medium, 5 μ g/ml β -glucan (yeast-b, yWGP, grifolan), 10 ng/ml LPS or both β -glucan and LPS for 24 h (II). Stimuli were removed and cells were rested for 5 days (III) and subsequently challenged at day 7 with 10 ng/ml LPS (IV). Supernatant was collected on day 8 to quantify TNF- α levels measured by means of ELISA (V).

(passage 4-32) were seeded at 1×10^6 cells/ml in 100 μ l/well in a poly-D-Lysine coated 96-well microplate (Greiner bio-one, Alphen a/d Rijn, The Netherlands) overnight at 37°C and 5% CO₂. The following day, reporter cell lines were stimulated for 24 h with different concentrations of β -glucans (5, 10, 100 and 1000 μ g/ml) in a total volume of 200 μ l/well, after which, cell-free volumes of 20 μ l/well were transferred to a 96 well-plate (Corning Costar) containing 180 μ l/well QUANTI-Blue™ Solution (InvivoGen). Following a last incubation of 2 h at 37°C and 5% CO₂, SEAP secretion was measured spectrophotometrically at 635 nm (TECAN, Giessen, The Netherlands).

Cytokine Production

The production of interleukin (IL)-6 and tumor necrosis factor alpha (TNF- α) in cell-conditioned supernatants was determined by means of ELISA (BioLegend, San Diego, CA, USA) according to manufacturer's protocol.

Nitric Oxide Production

To measure nitric oxide (NO) production, monocytes were trained for 5 days with β -glucans and NO was determined in supernatants on day 6 before stimulation with LPS using Griess reagent (Sigma-Aldrich).

Lactate Release

To assess release of lactate, monocytes were again trained for 5 days with β -glucans. After stimulation with LPS on day 7, supernatants were collected. The lactate concentration in supernatant was measured using a lactate colorimetric assay kit (Bio-connect, Huissen, The Netherlands).

Statistical Analysis

All experiments were conducted with a minimum of five human donors. All data were analyzed using GraphPad Prism software version 5.0 (Graphad, La Jolla, CA, USA). Results were analyzed using a paired Student's t-test, one-tailed Spearman's correlation test or 2-way ANOVA. A *P* value <0.05 was considered as statistically significant. Data are shown as means \pm standard deviation (SD).

RESULTS

Yeast-Derived β -Glucan Induced Training and Resilience in M-CSF-Differentiated Macrophages

We investigated whether a yeast-derived WGP (yWGP), extensively studied for its immunomodulatory activities, a second yeast-derived β -glucan extract (yeast-b) and a third fungi-derived β -glucan (grifolan) induce training or resilience when applying the established model as depicted in **Figure 1**. To control macrophage differentiation, the established model (16) was modified by adding M-CSF at all steps and using FBS instead of human serum. Yeast-b and yWGP, but not grifolan, enhanced release of TNF- α following an LPS stimulus at day 7 in both the established and macrophage training models (**Figures 2A, C**).

Beta-glucan yWGP also increased TNF- α release when compared to LPS-induced tolerance in the resilience protocol using either models while yeast provided resilience only in the adapted model and grifolan was unable to increase TNF- α release compared to LPS-induced tolerance in either model (**Figures 2B, D**).

Yeast-b Induces Training and Resilience in M-CSF-Induced Macrophages Following Continuous Exposure

To mimic daily intake of β -glucans, we investigated the effect of continuous exposure by supplementing β -glucans to day 2 until day 6 cultures without medium refreshment, as schematically depicted in **Figure 3A**. Again, at day 1 the LPS challenge was provided in the absence of β -glucans, as β -glucans can bind LPS, and therefore could prolong LPS presence in the medium (32). Similarly, as observed with single day exposure, continuous exposure in both the established and M-CSF modified training models enhanced release of TNF- α following an LPS-stimulation on day 7 (**Figure 3B**). Continuous exposure of LPS-activated cells to yeast-b enhanced the release of TNF- α following a secondary LPS stimulation on day 7 compared to cells receiving LPS as primary stimulus and did not receive yeast-b (**Figure 3C**). Taken together, our macrophage model of controlled and M-CSF-mediated macrophage differentiation and continuous exposure to β -glucans can demonstrate the induction of trained immunity by yeast-b.

Yeast and Bacteria-Derived β -Glucans Enhanced Secretion of Pro-Inflammatory Cytokines IL-6 and TNF- α in Training and Resilience Protocols With M-CSF-Induced Macrophages

With our macrophage model of M-CSF addition and continuous exposure to β -glucans, we next evaluated a range of different soluble and insoluble β -glucans derived from different sources for their effect on training and resilience. Next to yeast-b, yWGP and grifolan, we tested yeast-a, zymosan, curdlan, lentinan, oat β G and schizophyllan. All were previously characterized for their physicochemical composition and LPS/LTA contamination levels (31).

Upon employing the training protocol, supplementation with yeast-b, zymosan, curdlan, yWGP or yeast-a, all β -glucans increased TNF- α and IL-6 release compared to medium control, while lentinan, grifolan, oat β G and schizophyllan showed no additional TNF- α or IL-6 release (**Figures 4A, B**). Oat β G even showed a reduction in TNF- α release compared to medium control. In cultures receiving a primary trigger with LPS (*i.e.*, resilience protocol), supplementation with yeast-b, zymosan and yWGP increased TNF- α release following a secondary LPS triggering compared to the LPS control (**Figure 4C**). The observed effect was less strong for IL-6, with only yeast-b and lentinan showing a significantly increased release of IL-6 compared to the LPS control (**Figure 4D**). Supplementation with curdlan also increased TNF- α and IL-6 releases, however, these releases did not reach statistical significance.

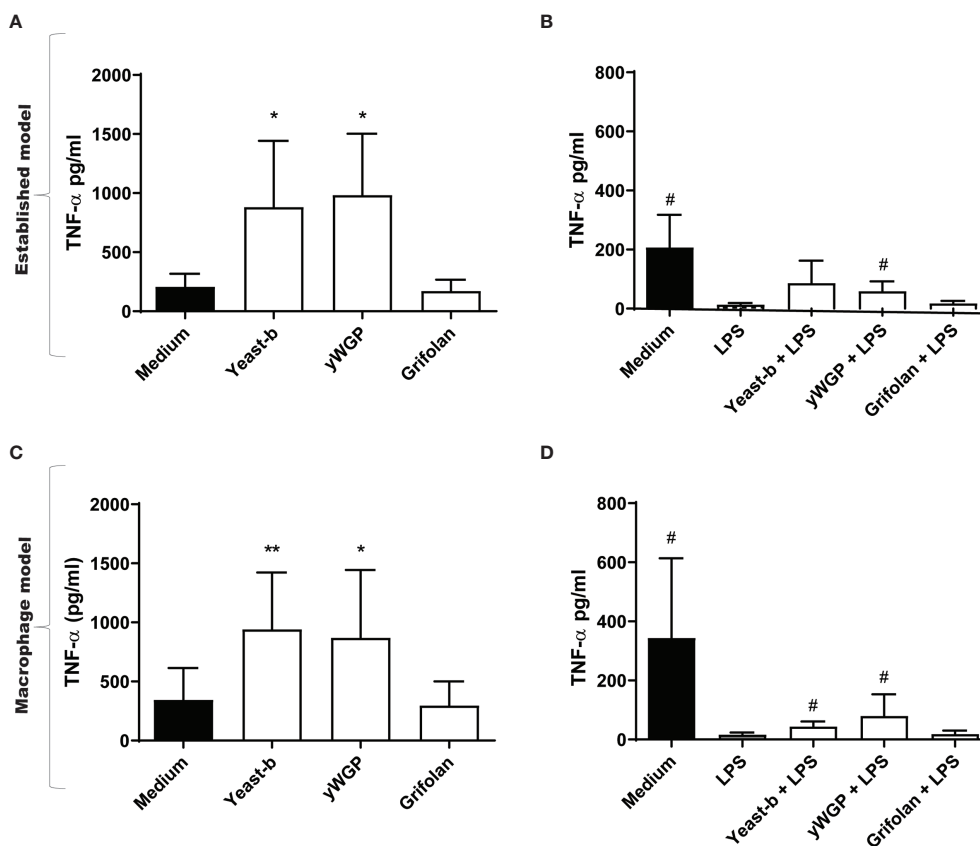


FIGURE 2 | Beta-glucans induced training and increase resilience in both trained immunity protocols. The protocols of the *in vitro* training and resilience model for (A–D) are schematically depicted in Figure 1 and described in the legend to Figure 1, with the adjustment that 50 ng/ml M-CSF was added to step I–III for (C) and (D). Results from training (A) and induced resilience (B) when applying the established protocol and training (C) and (D) when applying the controlled M-CSF-mediated macrophage differentiation protocol are shown in a bar graph as average pg/ml TNF- α \pm SD of $n = 5$ different donors. Data was analyzed with paired Student's *t* test and statistical significances were indicated: * $P < 0.05$ compared to the medium control; ** $P < 0.01$ compared to the medium control; # $P < 0.05$ compared to the LPS control.

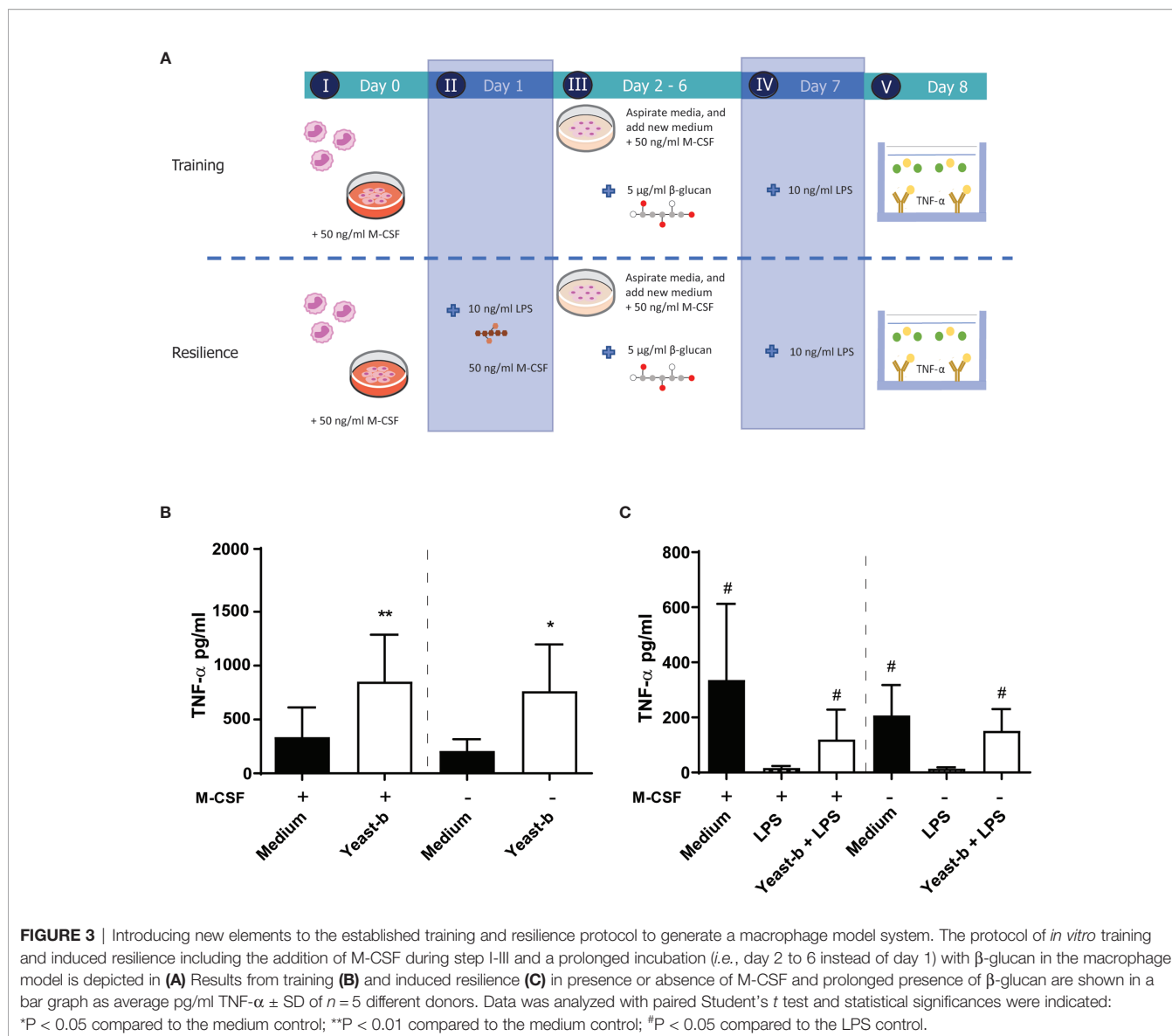
Beta-Glucans From Variable Sources Activated Dectin-1a and -1b Receptor Isoforms in a Concentration-Dependent Manner

Dectin-1 is a primary receptor for β -glucans to exert their immunomodulatory activity. To identify whether the β -glucans that were tested in this study can also signal via this receptor, the activation of both Dectin-1 isoforms (*i.e.*, 1a and 1b) was measured. HEK-Blue Dectin-1 reporter cells and their controls were stimulated with 5, 10, 100 and 1000 μ g/ml of β -glucans for 24 h and their activation measured as described in the materials and methods. Both Dectin-1a (Figure 5A) and Dectin-1b (Figure 5B) transfected cells, but not the non-transfected control cell line Null-1V (Supplementary Figure 1), showed activation following β -glucan supplementation. When using a high dose of 100 and 1000 μ g/ml, all β -glucans, except oat β G and yeast-a, showed concentration-dependent activation of both Dectin-1a and Dectin-1b. Of note, schizophyllan appeared to lower the activation of both Dectin-isoforms when applying the

highest dose. At a dose of 5 and 10 μ g/ml, the differences between β -glucan preparations became more noticeable revealing yeast-b, zymosan, yWGP, schizophyllan and yeast-b as the most potent inducers of Dectin-1a and Dectin-1b activation.

Dectin-1b Activation by β -Glucans Correlated With Lactate and TNF- α Secretion Following Training of Macrophages

To study the functional consequence of β -glucan-induced immune training of macrophages in more detail, we investigated the release of nitric oxide (NO) and lactate. In both experimental protocols (training / resilience) NO release was assessed before the LPS challenge at day 7 while lactate release was measured 24 h after challenge with LPS at day 7. Nitric oxide secretion was non-significantly increased in macrophages supplemented with curdlan, and significantly reduced in macrophages supplemented with grifolan, schizophyllan, lentinan, yeast-a or yeast-b, when compared to



medium only (Figure 6A). In cultures receiving a primary trigger with LPS on day 1, yeast-a significantly increased NO secretion when compared to medium following a secondary LPS challenge on day 7 (Figure 6B). Macrophages supplemented with yWGP, zymosan or yeast-b resulted in an increased concentration of lactate in their medium when compared to medium treated macrophages (Figure 6C). Macrophages receiving an LPS-challenge on day 1 followed by supplementation with β -glucans demonstrated no significant change in lactate secretion when compared to medium following a secondary LPS challenge on day 7 (Figure 6D).

Finally, we tested whether Dectin-1 activation correlated with above mentioned macrophage functions (Supplementary Table 1). In the training protocol, correlations found between secreted molecules and Dectin-1b were more significant rather than with Dectin-1a activation. Notably, TNF- α release, but not IL-6, was

found to correlate with Dectin-1b across all β -glucan concentrations (Figure 7A and Supplementary Table 1). Nitric oxide release and Dectin-1 activation showed no correlation. Lactate release correlated with Dectin-1b activation for β -glucan concentrations of 5, 10 and 1000 μ g/ml (Figure 7B and Supplementary Table 1). In the resilience protocol correlations between macrophage functions and Dectin-1 activation was far less evident. Only a few correlations were found at the highest β -glucan concentrations for both Dectin-1 isoforms. At a dose of 1000 μ g/ml Dectin-1a and Dectin-1b activation correlated with NO and/or IL-6, and at a dose of 100 μ g/ml Dectin-1a activation correlated with lactate release. Of interest, solubility, which is considered a defining feature in non-digestible polysaccharide functionality (33), significantly correlated with TNF- α in both protocols (Figures 7C, D). In addition, solubility of β -glucans also significantly correlated with IL-6 in both protocols (data not shown).

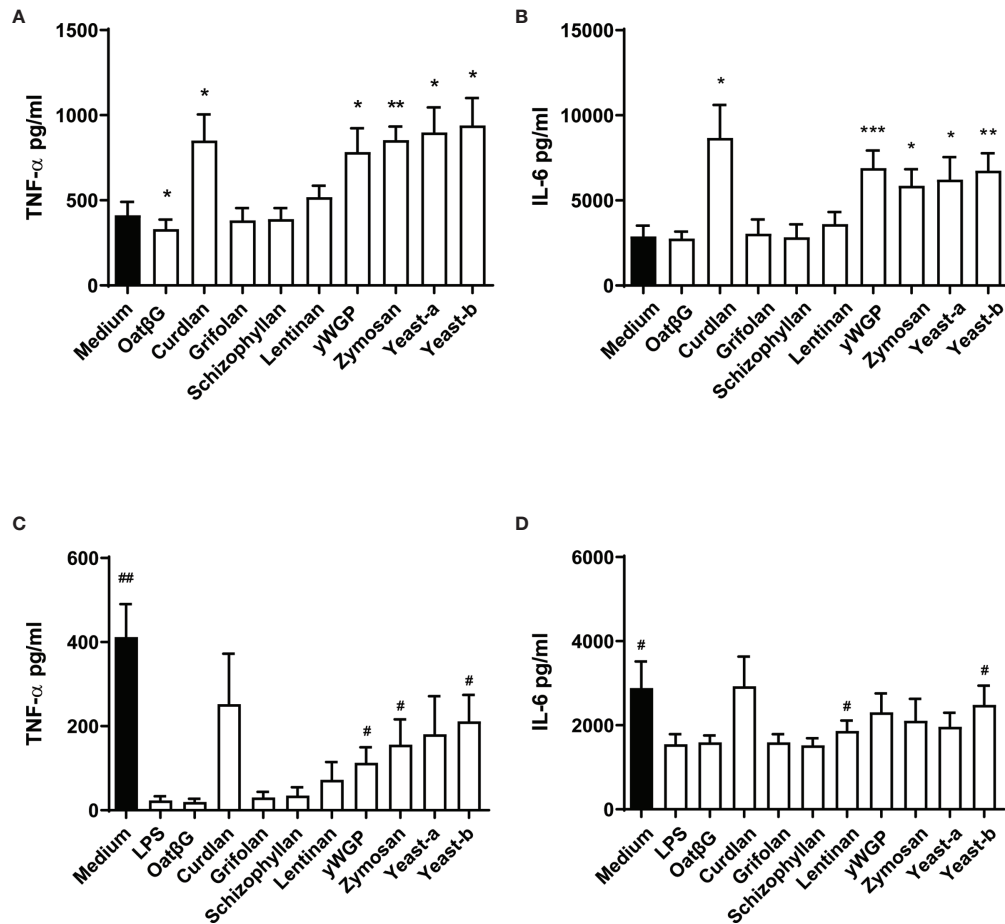


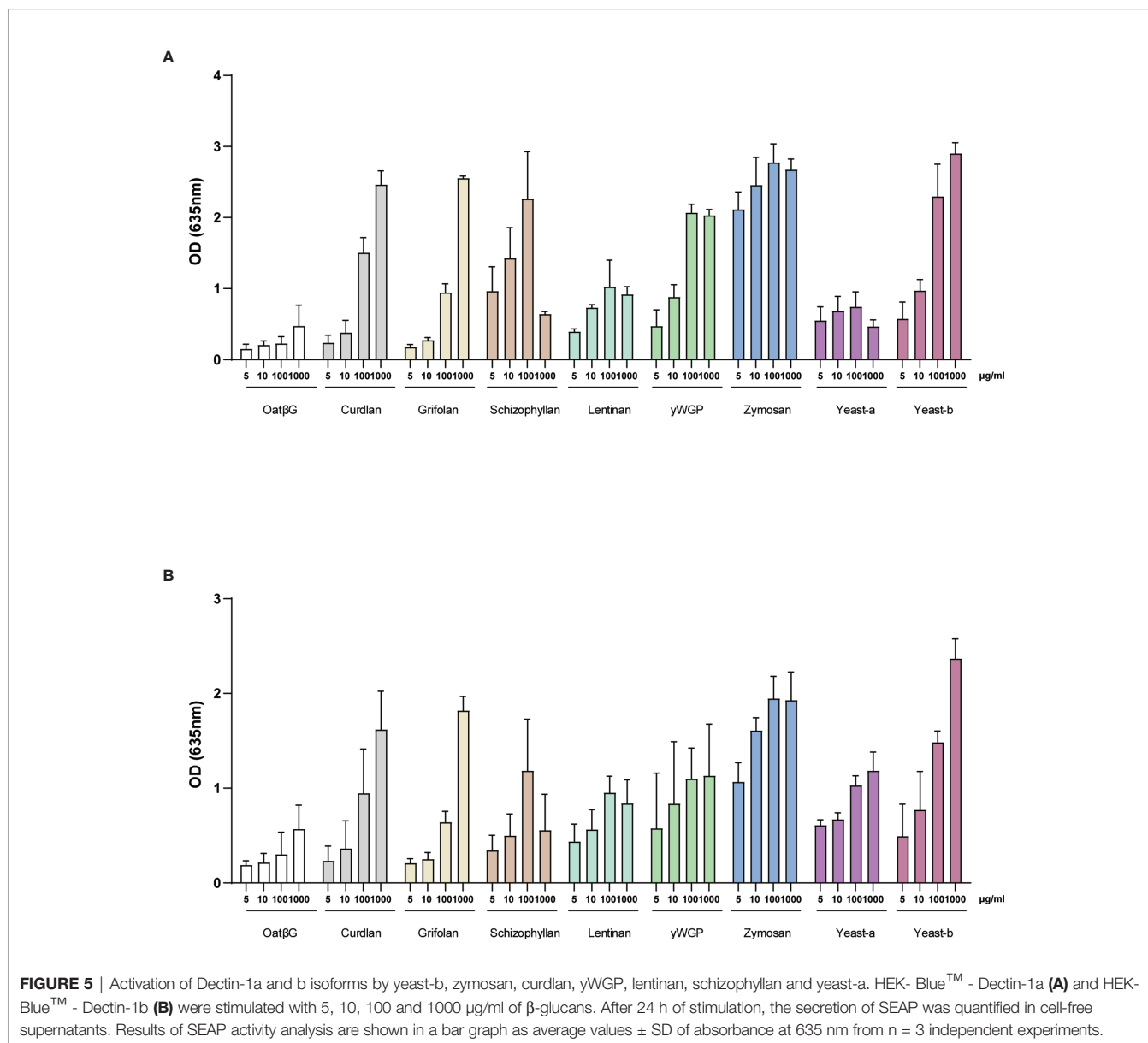
FIGURE 4 | Yeast-b, zymosan, curdlan, yWGP and yeast-a induced training and/or resilience in the macrophages model with continuous exposure. Monocytes were treated as depicted in **Figure 3A**. Monocytes were exposed to medium from days 1 to 6, or trained with 5 μ g/ml β -glucans from days 2 to 6, before testing the training effect by challenging them with 10 ng/ml LPS at day 7 for 24 h (**A, B**). Alternatively, to test induced resilience, monocytes were challenged with LPS at day 1, from days 2 to day 6 cells were cultured in medium or with 5 μ g/ml β -glucans and challenged with 10 ng/ml LPS at day 7 for 24 h (**C, D**). Supernatants of conditioned media were collected and TNF- α (**A, C**) and IL6 (**B, D**) measured by ELISA. Results are shown in a bar graph as average pg/ml cytokine \pm SD of $n = 6$ different donors. Data was analyzed with paired Student's *t* test and statistical significances were indicated: * $P < 0.05$ compared to the no β -glucan (medium) control; ** $P < 0.01$ compared to the medium control; # $P < 0.05$ compared to the LPS control. *** $P < 0.001$ compared to the medium control.

DISCUSSION

There is increasing evidence that β -glucans from different sources can modulate local and systemic immune responses. Data of our study clearly underline that β -glucans possess the ability to induce trained immunity and resilience of the innate immune system. However, several knowledge gaps remain regarding their mechanisms of action and structure-activity relationships. For instance, in human clinical studies it is not clear whether β -glucans can also be sufficiently absorbed from the intestinal tract, as Leentjes and colleagues found hardly detectable serum concentrations of β -glucan in blood (34). In addition, Lehne and colleagues found low concentrations of serum β -1,3 glucan without detection of systemic absorption following oral administration (35).

In contrast, preclinical studies have shown that orally ingested β -glucans can be absorbed in the gut (27, 28), in particular by

macrophages, rather than monocytes, that are present in the proximal small intestine and are subsequently transported to distant lymph nodes, bone marrow and spleen (28). The existing immune training model relies on human serum with unknown and variable levels of monocyte-differentiation factors to induce macrophages from monocytes. To remove this variability, we opted to use M-CSF at a concentration known to yield macrophages (36). Our findings indicate that both models show similar induction of both innate immune training and resilience as measured by the increased release of TNF- α and IL-6 following supplementation with β -glucan. A limitation of the current models is that both serum and M-CSF-differentiated monocyte-derived macrophages may not fully mimic the function of intestinal tissue resident macrophages (TRMs), that will probably ligate, engulf and fragment orally ingested β -glucans after intake. Tissue-derived macrophages originating from different sources were demonstrated to share over 90% similarity in their genetic



repertoire with only limited phenotypic differences, suggesting that the tissue micro-environment plays an important role in directing macrophage functionality (37–40). To improve the predictive value of the current immune cell models, future studies should focus on enhancing environmental mimicry through, for instance, the combination with intestinal organoids.

We next considered the exposure strategy for the therapeutic or preventive supplementation of β -glucans to support host immunity by replacing the single intake approach with daily intake. So, we made another change to the established model by providing continuous exposure instead of a single exposure. Measuring the effect of β -glucan supplementation in both models revealed that both the established model as well as the macrophage model led to enhanced training as well as resilience. Collectively, our macrophage model reflects mucosal exposure to β -glucans via the oral route and

can be used to screen β -glucans for their training and resilience effects in a similar fashion as the established model.

In our validated macrophage model, multiple β -glucans from a variety of sources, with reported purity and solubility, were screened for induction of training or resilience. Results are in line with literature in that none of the soluble β -glucans, not even the high molecular weight fraction of such β -glucans, induced TNF- α or IL-6 production in either human monocytes or monocyte-derived macrophages (33). In contrast with our findings, Pan and colleagues showed that oat-derived β -glucan induces trained immunity through metabolic reprogramming (20). The oat-derived β -glucan used in our studies was highly soluble and induced neither immune training, resilience nor Dectin-1 activation. A likely explanation for this discrepancy could be a difference in the preparation of the tested oat-derived β -glucans, with the

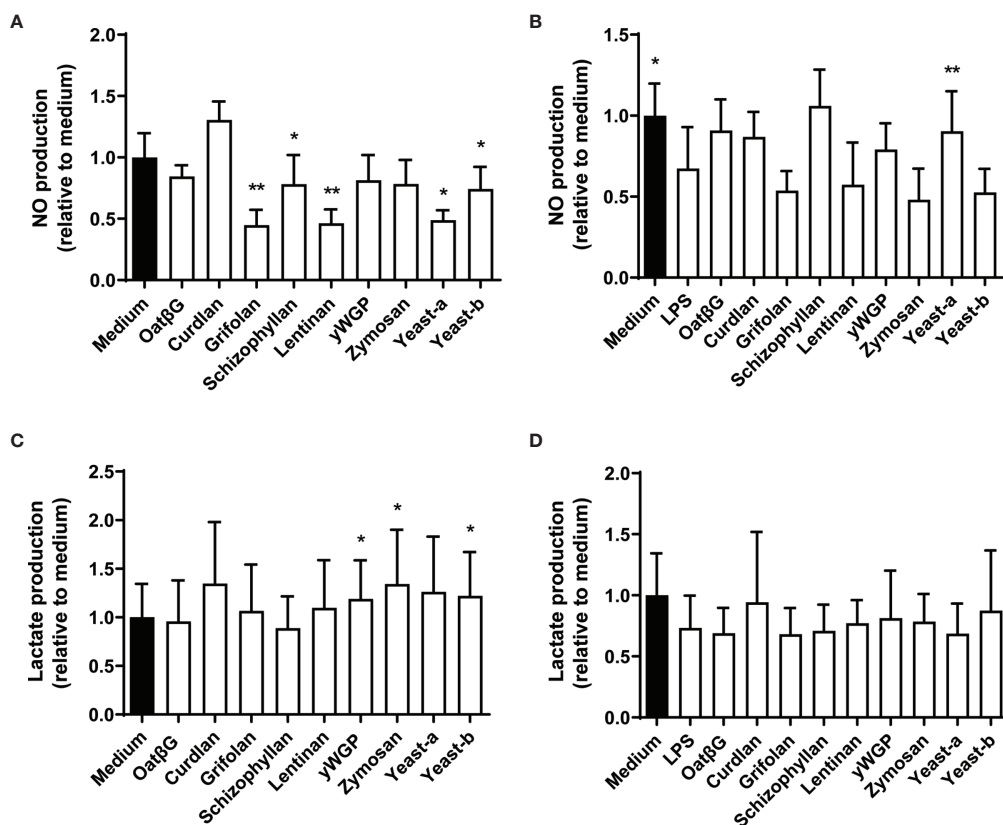


FIGURE 6 | The induction of training and resilience in macrophages by various β -glucans affects NO and lactate secretion. Human monocytes were trained (**A, C**) and resilience was induced (**B, D**) as described in the legend to **Figure 3**. Nitric oxide (**A, B**) was determined before challenging the macrophages with LPS at day 7 and lactate (**C, D**) release was determined after day 7 of LPS challenge. NO and lactate levels were determined in the supernatant and shown as percentages relative to non-treated macrophages (medium is set at 100%). Results are shown in bar graphs as average \pm SD of $n = 3$ -5 different donors. Data was analyzed with paired Student's t test and statistical significances were indicated: * $P < 0.05$ compared to the no β -glucan (medium) control; ** $P < 0.01$ compared to the medium control.

preparation used in the study by Pan and colleagues potentially containing an insoluble component. Another explanation could be the difference in cell origins as Pan and colleagues employed a monocytic cell line and mouse bone-marrow derived monocytes. Since PPR interaction by β -glucans are critical for innate immune training, differential PRR expression between human primary cells versus mouse immune cells, or human cell lines for that matter, may further underlie the different findings between the two studies. In fact, mouse and human Dectin-1 do not similarly mediate β -glucan recognition nor activation (41) and while primary monocytes and macrophages constitutively express Dectin-1, the human THP-1 cell line needs to be activated to do so (42, 43). In addition to analyze secretion of IL-6 and TNF- α , we also assessed the induction of NO and lactate secretion. Training of monocytes was shown to induce a shift in the metabolism from oxidative phosphorylation toward aerobic glycolysis (44) with lactate being a marker for glycolysis (10, 16). Using our macrophage model, we validated the metabolic shift towards increased glycolysis by showing increased lactate release, associated with increased cytokine production. In contrast, the release of NO was not altered as a result of training or resilience induction by β -glucans. This was also in line with previous findings (16, 45).

To the best of our knowledge, we demonstrated for the first time that human Dectin-1b activation by β -glucans was significantly and positively correlated with TNF- α secretion and lactate production following training of macrophages. In accordance with these results, previous studies demonstrated that maturation of monocytes was accompanied by enhanced expression of the Dectin-1b isoform, whereas isoform 1a expression tended to decline during maturation (46). Moreover, differentiation of monocytes with M-CSF also increased expression of Dectin-1b isoform that mainly conveys signals through the Syk/cPLA2 route (47). In the present study, particulate β -glucans demonstrated strong and significant activation of Dectin-1a as well as Dectin-1b receptors, also observed for some soluble β -glucan at high concentrations. It is noteworthy that insolubility overall strongly correlated to TNF- α release in both training and resilience assays. Goodridge and colleagues demonstrated that soluble β -glucans could reduce particulate β -glucan activity (33). They reported that, despite efficient binding to Dectin-1, soluble β -glucans are incapable of activating this receptor, and their presence might explain the lower Dectin-1 activation as we observed for schizophyllan specifically at

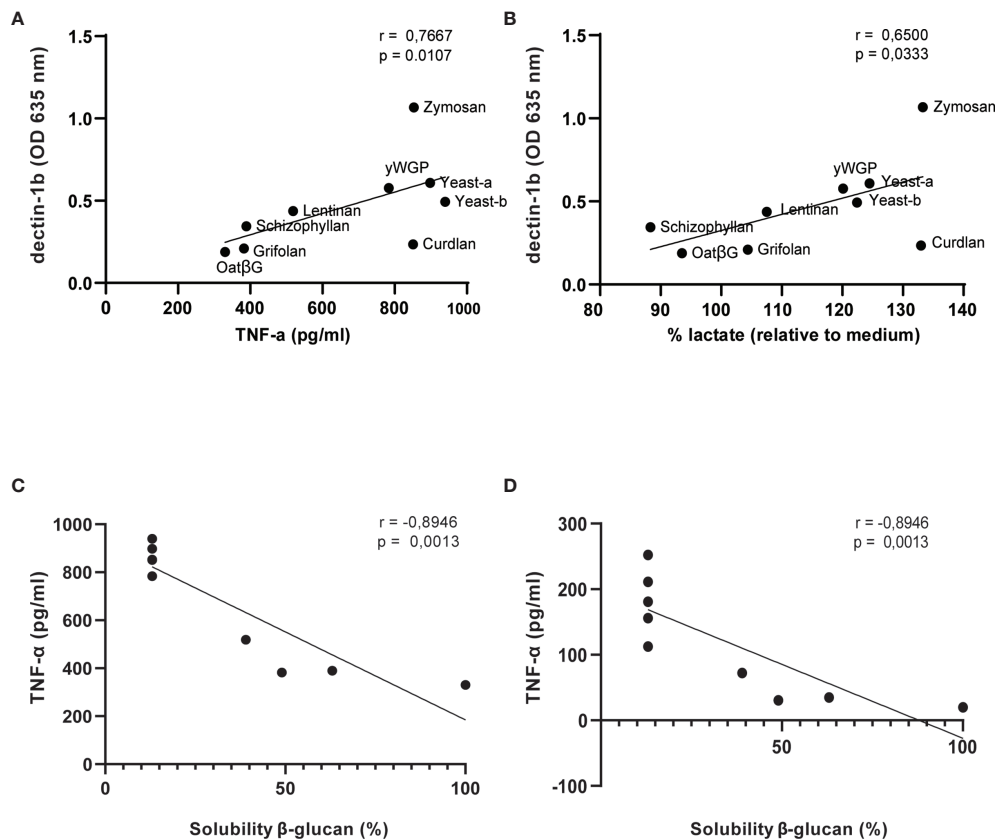


FIGURE 7 | Dectin-1b activation and solubility of β -glucans correlate with macrophage functions following training or induced resilience. Scatterplots displaying SEAP release upon exposure of 5 $\mu\text{g/ml}$ β -glucans to HEK-Blue™-Dectin-1b cells and TNF- α (A) or lactate (B) release following training of macrophages. Correlation coefficients of Dectin-1b activation with macrophage secretion of TNF- α and lactate upon exposure of 5, 10, 100 and 1000 $\mu\text{g/ml}$ β -glucans are displayed in **Supplementary Table 1**. Correlations between β -glucan solubility and TNF- α release following training (C) or resilience (D) testing in macrophages. Solubility of β -glucans was measured previously by de Graaff and colleagues (31): oat β G (100%), curdlan (<13%), grifolan (49%), schizophyllan (63%), lentinan (39%), yWGP (<13%), zymosan (<13%), yeast-a (<13%) and yeast-b (<13%).

a high concentration. Furthermore, these authors showed that immobilization of soluble β -glucans allows for Dectin-1 activation potentially due to the formation of a phagocytic synapse. However, the paper by Goodridge and colleagues does not indicate whether they investigated Dectin-1a or Dectin-1b. Although the differences between Dectin-1a and Dectin-1b function remains an understudied aspect of Dectin-1 function, literature would suggest that ligand binding might be different between Dectin-1a and Dectin-1b isoforms (48). Moreover, both isoforms are differently susceptible to neutrophil elastase cleavage which could impact the immune response towards pathogens (49). This could indicate that Dectin-1a or Dectin-1b usage might offer a means to regulate cellular responses towards β -glucan. Our own findings suggest that soluble β -glucans are capable of inducing Dectin-1 receptor clustering on HEK cells when applied at high enough concentrations. This, together with the observed correlations between Dectin-1b activation and macrophage functions, argues that Dectin-1b-expressing HEK cells may represent a pre-screening tool to assess the ability of compounds to train macrophages. In addition to Dectin-1, the CR3 receptor has also

been demonstrated to be necessary to induce training by β -glucans (24). In fact, blocking of Dectin-1 or CR3 inhibited the priming of monocytes by β -glucans (23). Therefore, extending the mentioned pre-screening with a cell line to also identify CR3 activation is considered a valuable addition.

Finally, we would like to state that our model is limited to assess direct effects on macrophages, while the translation to the human *in vivo* situation will be more complex. Data have shown that the Dectin-1 receptor is essential for the distribution of β -glucans by macrophages through the body (50). After ingestion, β -glucans are slowly degraded and smaller β -glucan fragments are systemically released to be recognized by and activate CR3 present on various innate immune cells (24, 50). Together these lead to increased responsiveness of the innate immune response upon secondary challenges. It is still a matter of debate whether primary activation of Dectin-1 is necessary and whether β -glucan binding and uptake is sufficient for the *in vivo* effect of β -glucans. Findings presented in this study and reports on *in vitro* data clearly indicate a role for β -glucan solubility in the induction of immune innate training. Although blocking of CR3

was shown to only partially prevent induction of immune training (24), future studies should aim to investigate the activation of CR3 or other PRRs by β -glucan fragments to provide additional proof whether or not Dectin-1-mediated uptake of β -glucans is sufficient to induce immune training. Importantly, β -glucans were shown to reduce tumor onset, growth and progression in murine models (51). However, β -glucans from different molecular sizes, soluble/insoluble ratios and branching patterns may have significantly variable bioavailability and immune potency, and consequently variable anti-tumor effects. Therefore, the applied model for β -glucan selection must fit and represent the intended *in vivo* activity to accurately investigate clinical effects of β -glucans.

In conclusion, firstly this study presents a new macrophage-based *in vitro* model that reflects mucosal immunomodulation by β -glucans. We have shown that indigestible β -glucans induce training and/or resilience in macrophages leading to an increase in cytokine production and glycolysis. Furthermore, soluble and particulate β -glucans demonstrated different effects on Dectin-1 activation, which might be an additional explanation for the difference in trained innate immunity effects of soluble and particulate β -glucans as previously found by others.

Secondly, our data suggest that both insolubility and Dectin-1b activation predict whether β -glucans contain the capacity to induce training or resilience. Therefore, physicochemical analysis as well as Dectin-1b ligation could be considered a proxy for induction of training or resilience in macrophages, which in turn yield a simplified model to identify dietary ingredients with macrophage training properties. A simplified model to screen dietary fibers, beyond β -glucans, for their potential to induce immune training would benefit manufacturers who would aim to include immune-potentiating ingredients in their products.

REFERENCES

- Christ A, Gunther P, Lauterbach MAR, Duewelling P, Biswas D, Pelka K, et al. Western Diet Triggers NLRP3-Dependent Innate Immune Reprogramming. *Cell* (2018) 172(1-2):162–75.e14. doi: 10.1016/j.cell.2017.12.013
- Netea MG, Quintin J, van der Meer JW. Trained Immunity: A Memory for Innate Host Defense. *Cell Host Microbe* (2011) 9(5):355–61. doi: 10.1016/j.chom.2011.04.006
- Netea MG, Joosten LA, Latz E, Mills KH, Natoli G, Stunnenberg HG, et al. Trained Immunity: A Program of Innate Immune Memory in Health and Disease. *Science* (2016) 352(6284):aaf1098. doi: 10.1126/science.aaf1098
- Aaby P, Roth A, Ravn H, Napirna BM, Rodrigues A, Lisse IM, et al. Randomized Trial of BCG Vaccination at Birth to Low-Birth-Weight Children: Beneficial Nonspecific Effects in the Neonatal Period? *J Infect Dis* (2011) 204(2):245–52. doi: 10.1093/infdis/jir240
- Morra ME, Kien ND, Elmarazy A, Abdelaziz OAM, Elsayed AL, Halhouli O, et al. Early Vaccination Protects Against Childhood Leukemia: A Systematic Review and Meta-Analysis. *Sci Rep* (2017) 7(1):15986. doi: 10.1038/s41598-017-16067-0
- Pfahlberg A, Kolmel KF, Grange JM, Mastrangelo G, Krone B, Botev IN, et al. Inverse Association Between Melanoma and Previous Vaccinations Against Tuberculosis and Smallpox: Results of the FEBIM Study. *J Invest Dermatol* (2002) 119(3):570–5. doi: 10.1046/j.1523-1747.2002.00643.x
- Stewart J, Levine EA. Role of Bacillus Calmette-Guerin in the Treatment of Advanced Melanoma. *Expert Rev Anticancer Ther* (2011) 11(11):1671–6. doi: 10.1586/era.11.163
- Villumsen M, Sorup S, Jess T, Ravn H, Relander T, Baker JL, et al. Risk of Lymphoma and Leukaemia After Bacille Calmette-Guerin and Smallpox Vaccination: A Danish Case-Cohort Study. *Vaccine* (2009) 27(49):6950–8. doi: 10.1016/j.vaccine.2009.08.103
- Kalafati L, Kourtzelis I, Schulte-Schrepping J, Li X, Hatzioannou A, Grinenko T, et al. Innate Immune Training of Granulopoiesis Promotes Anti-tumor Activity. *Cell* (2020) 183(3):771–85.e12. doi: 10.1016/j.cell.2020.09.058
- Dominguez-Andres J, Novakovic B, Li Y, Scicluna BP, Gresnigt MS, Arts RJW, et al. The Itaconate Pathway Is a Central Regulatory Node Linking Innate Immune Tolerance and Trained Immunity. *Cell Metab* (2019) 29(1):211–20.e5. doi: 10.1016/j.cmet.2018.09.003
- Novakovic B, Habibi E, Wang SY, Arts RJW, Davar R, Megchelenbrink W, et al. Beta-Glucan Reverses the Epigenetic State of LPS-Induced Immunological Tolerance. *Cell* (2016) 167(5):1354–68.e14. doi: 10.1016/j.cell.2016.09.034
- Henig O, Kaye KS. Bacterial Pneumonia in Older Adults. *Infect Dis Clin North Am* (2017) 31(4):689–713. doi: 10.1016/j.idc.2017.07.015
- Fuller R, Moore MV, Lewith G, Stuart BL, Ormiston RV, Fisk HL, et al. Yeast-Derived beta-1,3/1,6 Glucan, Upper Respiratory Tract Infection and Innate Immunity in Older Adults. *Nutrition* (2017) 39–40:30–5. doi: 10.1016/j.nut.2017.03.003
- Bekkering S, Joosten LA, Netea MG, Riksen NP. Trained Innate Immunity as a Mechanistic Link Between Sepsis and Atherosclerosis. *Crit Care* (2014) 18(6):645. doi: 10.1186/s13054-014-0645-3
- van Splunter M, van Osch TLJ, Brugman S, Savelkoul HFJ, Joosten LAB, Netea MG, et al. Induction of Trained Innate Immunity in Human Monocytes by Bovine Milk and Milk-Derived Immunoglobulin G. *Nutrients* (2018) 10(10):1378. doi: 10.3390/nu10101378
- Bekkering S, Blok BA, Joosten LA, Riksen NP, van Crevel R, Netea MG. In Vitro Experimental Model of Trained Innate Immunity in Human Primary Monocytes. *Clin Vaccine Immunol* (2016) 23(12):926–33. doi: 10.1128/CVI.00349-16

DATA AVAILABILITY STATEMENT

The raw data supporting the conclusions of this article will be made available by the authors, without undue reservation.

AUTHOR CONTRIBUTIONS

BM and PG acquired the data. BM and PG analyzed and interpreted the data. BM and PG drafted the manuscript. CG, JB, RW, RD, JM, and MF critically revised the manuscript. All authors contributed to the article and approved the submitted version.

FUNDING

This research is funded by the Partnership between NWO domain Applied and Engineered Sciences and Danone Nutricia Research and with additional financial support from Topsector Agri and Food. Danone Nutricia Research was not involved in the study design, collection, analysis, interpretation of data, the writing of this article or the decision to submit it for publication. This work was further supported by the Dutch Cancer Society [WUR 2015–7734] ‘Food-derived beta-glucans and fungal proteins to support anti-melanoma immune therapy’ and by the Dutch Ministry of Economic Affairs (KB-23-001-015).

SUPPLEMENTARY MATERIAL

The Supplementary Material for this article can be found online at: <https://www.frontiersin.org/articles/10.3389/fimmu.2021.672796/full#supplementary-material>

17. Leonhardt J, Grosse S, Marx C, Siwczak F, Stengel S, Bruns T, et al. Candida Albicans Beta-Glucan Differentiates Human Monocytes Into a Specific Subset of Macrophages. *Front Immunol* (2018) 9:2818. doi: 10.3389/fimmu.2018.02818
18. Murphy EA, Davis JM, Carmichael MD. Immune Modulating Effects of Beta-Glucan. *Curr Opin Clin Nutr Metab Care* (2010) 13(6):656–61. doi: 10.1097/MCO.0b013e32833f1afb
19. Wichers H. Immunomodulation by Food: Promising Concept for Mitigating Allergic Disease? *Anal Bioanal Chem* (2009) 395(1):37–45. doi: 10.1007/s00216-009-2838-1
20. Pan W, Hao S, Zheng M, Lin D, Jiang P, Zhao J, et al. Oat-Derived Beta-Glucans Induced Trained Immunity Through Metabolic Reprogramming. *Inflammation* (2020) 43(4):1323–36. doi: 10.1007/s10753-020-01211-2
21. Kankkunen P, Teirila L, Rintahaka J, Alenius H, Wolff H, Matikainen S. (1,3)-Beta-Glucans Activate Both Dectin-1 and NLRP3 Inflammasome in Human Macrophages. *J Immunol* (2010) 184(11):6335–42. doi: 10.4049/jimmunol.0903019
22. McFarlin BK, Carpenter KC, Davidson T, McFarlin MA. Baker's Yeast Beta Glucan Supplementation Increases Salivary IgA and Decreases Cold/Flu Symptomatic Days After Intense Exercise. *J Diet Suppl* (2013) 10(3):171–83. doi: 10.3109/19390211.2013.820248
23. Patin EC, Thompson A, Orr SJ. Pattern Recognition Receptors in Fungal Immunity. *Semin Cell Dev Biol* (2019) 89:24–33. doi: 10.1016/j.semcdb.2018.03.003
24. Quintin J, Saeed S, Martens JHA, Giamarellos-Bourboulis EJ, Ifrim DC, Logie C, et al. Candida Albicans Infection Affords Protection Against Reinfection Via Functional Reprogramming of Monocytes. *Cell Host Microbe* (2012) 12(2):223–32. doi: 10.1016/j.chom.2012.06.006
25. Dillon A, Lo DD. M Cells: Intelligent Engineering of Mucosal Immune Surveillance. *Front Immunol* (2019) 10:1499. doi: 10.3389/fimmu.2019.01499
26. Mazzini E, Massimiliano L, Penna G, Rescigno M. Oral Tolerance can be Established Via Gap Junction Transfer of Fed Antigens From CX3CR1(+) Macrophages to CD103(+) Dendritic Cells. *Immunity* (2014) 40(2):248–61. doi: 10.1016/j.immuni.2013.12.012
27. Rice PJ, Adams EL, Ozment-Skelton T, Gonzalez AJ, Goldman MP, Lockhart BE, et al. Oral Delivery and Gastrointestinal Absorption of Soluble Glucans Stimulate Increased Resistance to Infectious Challenge. *J Pharmacol Exp Ther* (2005) 314(3):1079–86. doi: 10.1124/jpet.105.085415
28. Hong F, Yan J, Baran JT, Allendorf DJ, Hansen RD, Ostroff GR, et al. Mechanism by Which Orally Administered beta-1,3-glucans Enhance the Tumoricidal Activity of Antitumor Monoclonal Antibodies in Murine Tumor Models. *J Immunol* (2004) 173(2):797–806. doi: 10.4049/jimmunol.173.2.797
29. Chan GC, Chan WK, Sze DM. The Effects of Beta-Glucan on Human Immune and Cancer Cells. *J Hematol Oncol* (2009) 2:25. doi: 10.1186/1756-8722-2-25
30. Zhong K, Liu Z, Lu Y, Xu X. Effects of Yeast Beta-Glucans for the Prevention and Treatment of Upper Respiratory Tract Infection in Healthy Subjects: A Systematic Review and Meta-Analysis. *Eur J Nutr* (2021), 1–13. doi: 10.1007/s00394-021-02566-4
31. de Graaff P, Berrevoets C, Rsch C, Schols HA, Verhoef K, Wichers HJ, et al. Curdlan, Zymosan and a Yeast-Derived Beta-Glucan Reshape Tumor-Associated Macrophages Into Producers of Inflammatory Chemo-Attractants. *Cancer Immunol Immunother* (2021) 70(2):547–61. doi: 10.1007/s00262-020-02707-4
32. Chaliha C, Rugen MD, Field RA, Kalita E. Glycans as Modulators of Plant Defense Against Filamentous Pathogens. *Front Plant Sci* (2018) 9:928. doi: 10.3389/fpls.2018.00928
33. Goodridge HS, Reyes CN, Becker CA, Katsumoto TR, Ma J, Wolf AJ, et al. Activation of the Innate Immune Receptor Dectin-1 Upon Formation of a 'Phagocytic Synapse'. *Nature* (2011) 472(7344):471–5. doi: 10.1038/nature10071
34. Leentjens J, Quintin J, Gerretsen J, Kox M, Pickkers P, Netea MG. The Effects of Orally Administered Beta-glucan on Innate Immune Responses in Humans, a Randomized Open-Label Intervention Pilot-Study. *PLoS One* (2014) 9(9):e108794. doi: 10.1371/journal.pone.0108794
35. Lehne G, Haneberg B, Gaustad P, Johansen PW, Preus H, Abrahamsen TG. Oral Administration of a New Soluble Branched Beta-1,3-D-glucan is Well Tolerated and can Lead to Increased Salivary Concentrations of Immunoglobulin A in Healthy Volunteers. *Clin Exp Immunol* (2006) 143(1):65–9. doi: 10.1111/j.1365-2249.2005.02962.x
36. Tang YF, Govers C, Wichers HJ, Mes JJ. Macrophages Treated With non-Digestible Polysaccharides Reveal a Transcriptionally Unique Phenotype. *J Funct Foods* (2017) 36:280–9. doi: 10.1016/j.jff.2017.07.003
37. Lavin Y, Winter D, Blecher-Gonen R, David E, Keren-Shaul H, Merad M, et al. Tissue-Resident Macrophage Enhancer Landscapes are Shaped by the Local Microenvironment. *Cell* (2014) 159(6):1312–26. doi: 10.1016/j.cell.2014.11.018
38. Beattie L, Sawtell A, Mann J, Frame TCM, Teal B, de Labastida Rivera F, et al. Bone Marrow-Derived and Resident Liver Macrophages Display Unique Transcriptomic Signatures But Similar Biological Functions. *J Hepatol* (2016) 65(4):758–68. doi: 10.1016/j.jhep.2016.05.037
39. Gibbings SL, Goyal R, Desch AN, Leach SM, Prabagar M, Atif SM, et al. Transcriptome Analysis Highlights the Conserved Difference Between Embryonic and Postnatal-Derived Alveolar Macrophages. *Blood* (2015) 126(11):1357–66. doi: 10.1182/blood-2015-01-624809
40. Scott CL, Zheng F, De Baetselier P, Martens L, Saeys Y, De Prijck S, et al. Bone Marrow-Derived Monocytes Give Rise to Self-Renewing and Fully Differentiated Kupffer Cells. *Nat Commun* (2016) 7:10321. doi: 10.1038/ncomms10321
41. Wu ML, Huang TC, Hung HJ, Yu JH, Chung WB, Chaung HC. Investigation of Beta-Glucans Binding to Human/Mouse Dectin-1 and Associated Immunomodulatory Effects on Two Monocyte/Macrophage Cell Lines. *Biotechnol Prog* (2010) 26(5):1391–9. doi: 10.1002/btpr.429
42. Ferwerda G, Meyer-Wentrup F, Kullberg BJ, Netea MG, Adema GJ. Dectin-1 Synergizes With TLR2 and TLR4 for Cytokine Production in Human Primary Monocytes and Macrophages. *Cell Microbiol* (2008) 10(10):2058–66. doi: 10.1111/j.1462-5822.2008.01188.x
43. Rogers H, Williams DW, Feng GJ, Lewis MA, Wei XQ. Role of Bacterial Lipopolysaccharide in Enhancing Host Immune Response to Candida Albicans. *Clin Dev Immunol* (2013) 2013:320168. doi: 10.1155/2013/320168
44. Cheng SC, Quintin J, Cramer RA, Shephardson KM, Saeed S, Kumar V, et al. mTOR- and HIF-1 α -mediated Aerobic Glycolysis as Metabolic Basis for Trained Immunity. *Science* (2014) 345(6204):1250684. doi: 10.1126/science.1250684
45. Dos Santos JC, Barroso de Figueiredo AM, Teodoro Silva MV, Cirovic B, de Bree LCJ, Damen M, et al. Beta-Glucan-Induced Trained Immunity Protects Against Leishmania Braziliensis Infection: A Crucial Role for IL-32. *Cell Rep* (2019) 28(10):2659–72.e6. doi: 10.1016/j.celrep.2019.08.004
46. Fischer M, Muller JP, Spies-Weissart B, Grafe C, Kurzai O, Hunniger K, et al. Isoform Localization of Dectin-1 Regulates the Signaling Quality of Anti-Fungal Immunity. *Eur J Immunol* (2017) 47(5):848–59. doi: 10.1002/eji.201646849
47. Municio C, Alvarez Y, Montero O, Hugo E, Rodriguez M, Domingo E, et al. The Response of Human Macrophages to Beta-Glucans Depends on the Inflammatory Milieu. *PLoS One* (2013) 8(4):e62016. doi: 10.1371/journal.pone.0062016
48. Heinsbroek SE, Taylor PR, Rosas M, Willment JA, Williams DL, Gordon S, et al. Expression of Functionally Different Dectin-1 Isoforms by Murine Macrophages. *J Immunol* (2006) 176(9):5513–8. doi: 10.4049/jimmunol.176.9.5513
49. Griffiths JS, Thompson A, Stott M, Benny A, Lewis NA, Taylor PR, et al. Differential Susceptibility of Dectin-1 Isoforms to Functional Inactivation by Neutrophil and Fungal Proteases. *FASEB J* (2018) 32(6):3385–97. doi: 10.1096/fj.201701145R
50. Cheung NK, Modak S, Vickers A, Knuckles B. Orally Administered Beta-Glucans Enhance Anti-Tumor Effects of Monoclonal Antibodies. *Cancer Immunol Immunother* (2002) 51(10):557–64. doi: 10.1007/s00262-002-0321-3
51. de Graaff P, Govers C, Wichers HJ, Debets R. Consumption of Beta-Glucans to Spice Up T Cell Treatment of Tumors: A Review. *Expert Opin Biol Ther* (2018) 18(10):1023–40. doi: 10.1080/14712598.2018.1523392

Conflict of Interest: MF and JB are employed by Danone Nutricia Research.

The remaining authors declare that the research was conducted in the absence of any commercial or financial relationships that could be construed as a potential conflict of interest.

Copyright © 2021 Moerings, de Graaff, Furber, Witkamp, Debets, Mes, van Bergenhenegouwen and Govers. This is an open-access article distributed under the terms of the Creative Commons Attribution License (CC BY). The use, distribution or reproduction in other forums is permitted, provided the original author(s) and the copyright owner(s) are credited and that the original publication in this journal is cited, in accordance with accepted academic practice. No use, distribution or reproduction is permitted which does not comply with these terms.