



Decreased Peripheral Naïve T Cell Number and Its Role in Predicting Cardiovascular and Infection Events in Hemodialysis Patients

Fangfang Xiang^{1†}, Xuesen Cao^{1†}, Xiaohong Chen¹, Zhen Zhang¹, Xiaoqiang Ding¹, Jianzhou Zou^{1,2,3,4*} and Bo Shen^{1,2,3,4*}

¹ Department of Nephrology, Zhongshan Hospital, Fudan University, Shanghai, China, ² Shanghai Key Laboratory of Renal Disease and Blood Purification, Shanghai, China, ³ Shanghai Medical Center of Kidney, Shanghai, China, ⁴ Shanghai Institute of Kidney and Dialysis, Shanghai, China

OPEN ACCESS

Edited by:

Valquiria Bueno,
Federal University of São Paulo, Brazil

Reviewed by:

Mary A. Markiewicz,
University of Kansas Medical Center,
United States
Alejandra Pera,
University of Cordoba, Spain

*Correspondence:

Jianzhou Zou
zou.jianzhou@zs-hospital.sh.cn
Bo Shen
shen.bo@zs-hospital.sh.cn

[†]These authors have contributed
equally to this work

Specialty section:

This article was submitted to
Inflammation,
a section of the journal
Frontiers in Immunology

Received: 21 December 2020

Accepted: 26 February 2021

Published: 17 March 2021

Citation:

Xiang F, Cao X, Chen X, Zhang Z,
Ding X, Zou J and Shen B (2021)
Decreased Peripheral Naïve T Cell
Number and Its Role in Predicting
Cardiovascular and Infection
Events in Hemodialysis Patients.
Front. Immunol. 12:644627.
doi: 10.3389/fimmu.2021.644627

Patients with end-stage renal disease (ESRD) are at high risk of morbidity and mortality from cardiovascular and infectious diseases, which have been found to be associated with a disturbed immune response. Accelerated T-cell senescence is prevalent in these patients and considered a significant factor contributing to increased risk of various morbidities. Nevertheless, few studies have explicated the relevance of T-cell senescence to these fatal morbidities in ESRD patients. In this study, we designed a longitudinal prospective study to evaluate the influence of T-cell senescence on cardiovascular events (CVEs) and infections in hemodialysis (HD) patients. Clinical outcomes of 404 patients who had been on HD treatment for at least 6 months were evaluated with respect to T-cell senescence determined using flow cytometry. We found that T-cell senescence was associated with systemic inflammation. High-sensitivity C-reactive protein was positively associated with decreased naïve T cell levels. Elevated tumor necrosis factor- α and interleukin 6 levels were significantly associated with lower central memory T cell and higher T effector memory CD45RA cell levels. Decreased CD4⁺ naïve T cell count was independently associated with CVEs, whereas decreased CD8⁺ naïve T cell count was independently associated with infection episodes in HD patients. In conclusion, HD patients exhibited accelerated T-cell senescence, which was positively related to inflammation. A reduction of naïve T cell could be a strong predictor of CVEs and infection episodes in HD patients.

Keywords: hemodialysis, T-cell senescence, naïve T cells, cardiovascular event, infection

INTRODUCTION

End-stage renal disease (ESRD), considered as a public health concern, affects more than 1.5 million people worldwide (1). Patients with ESRD usually have a high risk of life-threatening comorbidities, especially cardiovascular and infectious diseases. According to the U.S. Renal Data System, ESRD patients have a 25% annual mortality rate, and almost 50% patient deaths are attributed to

cardiovascular complications (2). Infection is the second leading cause of death, accounting for 35% of all-cause mortality (3). It has been proposed that chronic kidney disease may be a model of premature aging, since uremia could induce premature senescence and many aging-related complications are prevalent in ESRD patients, including those with cardiovascular diseases (CVDs) and infections (4). Recent evidence suggests that uremia can induce T-cell senescence, indicated by a lower thymic output of naïve T cells, a decline in T-cell telomere length, and an increase in differentiation toward the terminal differentiated memory phenotype; T-cell senescence is more pronounced in patients undergoing hemodialysis (HD) therapy (5, 6). Compared with physiological aging, ESRD seems to have the ability to increase the immunological age of T cells by 20–30 years (7). In terms of function, T cells in ESRD patients are pre-activated by secreting more inflammatory cytokines in the resting state, leading to persistent inflammation and providing a breeding ground for CVD (8, 9). On the contrary, T cells in ESRD patients have diminished reaction toward pathogen stimulation, with susceptibility to apoptotic death after activation (9), reduced humoral response to vaccination (10), and impaired maintenance of specific T cell memory (11), resulting in a high incidence of infection. Hence, interventions targeting T cell function could improve morbidity and mortality in such patients.

While it is well-recognized that ESRD-related T cell dysfunction is prominent, few studies have explicated the relevance of T-cell senescence to the fatal morbidity resulting from ESRD, and existing results are based on different markers of immune senescence. It has been reported that telomere length shortening is associated with a higher risk of death, reduced thymic output is associated with severe infection episodes, and terminally differentiated CD8⁺T cell expansion is closely linked to accelerated atherosclerosis in ESRD patients (5). CD4⁺CD28⁻ T cells, as a terminal differentiated memory phenotype, were independently associated with the presence of atherosclerotic disease in ESRD patients (12). Cytomegalovirus (CMV) infection is considered to act as a critical factor for accelerated T-cell senescence in ESRD patients by exacerbating the selective depletion of naïve T cells and clonal expansion of memory T cells (13). However, since most patients with ESRD are CMV-seropositive (14, 15), it is difficult to distinguish the CMV-independent effects of T-cell aging in ESRD. The question that then arises is whether it would be possible to find one consistent marker for evaluating overall immunological age, assessing the risk of multiple complications, and aiding early intervention in ESRD patients.

Depletion of naïve T cells, the most significant and consistent change reported during aging, is also prevalent in ESRD (8, 15). Our previous study findings revealed that a decrease in the number of naïve T cells is significantly associated with increased mortality in HD patients (16), supporting the idea that selective reduction of naïve T cell is a critical feature in this population and may impact clinical outcomes profoundly. In the present study, we prospectively analyzed whether T-cell senescence is associated with cardiovascular events (CVEs) and

infectious episodes in HD patients and aimed to find valuable markers for clinically evaluating immunological aging and predicting risk of ESRD.

MATERIALS AND METHODS

Study Population

This current study included patients who had been on HD treatment for at least 6 months in the Blood Purification Center, Department of Nephrology, Zhongshan Hospital, Fudan University. Patients were enrolled from August to September, 2016 and followed weekly. Individuals who experienced CVE or infection within 3 months were excluded. Those with evidence of hematological diseases, rheumatic diseases, active malignancies, and history of human immunodeficiency virus infection or using immunosuppressants were also excluded. Follow-up lasted for 2 years and ended in October 2018. During follow-up, CVEs and infection episodes were documented. CVEs were defined as coronary artery disease, congestive heart failure, stroke, and peripheral arterial occlusive disease. Infection episodes were defined as infectious diseases requiring regular intravenous antibiotics in hospital or emergency department.

We obtained blood samples from the arterial site of vascular access before the start of the HD session in the middle of the week. Anti-CMV-IgM and IgG antibodies were detected using the Roche Elecsys assay. All procedures were performed at the Department of Clinical Chemistry, Zhongshan Hospital, Fudan University using standard methods. Written informed consent was obtained from all patients that met the inclusion criteria. This study was approved by the Ethics committee of Zhongshan Hospital, Fudan University.

Cell Preparation and Flow Cytometry Analysis

On the day of blood drawing, blood samples mixed with heparin anticoagulant were lysed with red blood cell lysis solution and 0.1 mM EDTA and prepared for flow cytometry analysis with the following fluorescein-conjugated monoclonal antibodies: CD3-PE (Bio-Legend, San Diego, CA, USA), CD4-APC (eBioscience, San Diego, CA, USA), CD8a-PerCP/Cy5.5 (eBioscience), CD45RO-FITC (Miltenyi Biotec, Bergisch Gladbach, Germany), and CCR7-APC/Cy7 (BioLegend). The relative expression of CD45RO and CCR7 was used to identify naïve T cell ($T_{\text{Naïve}}$, CD45RO⁻ CCR7⁺), central memory T cell (T_{CM} , CD45RO⁺ CCR7⁺), effector memory T cell (T_{EM} , CD45RO⁺ CCR7⁻), and T effector memory CD45RA cell (T_{EMRA} , CD45RO⁻ CCR7⁻) subsets of CD4⁺ or CD8⁺ T cells. These markers were selected according to previous studies (7, 17). The immunophenotyping methods and gating strategy have been elaborated in the supplementary materials (**Figure S1**).

Statistical Analysis

All data are expressed as mean ± standard deviation or median (interquartile range), as appropriate. Correlations between T cell parameters and laboratory variables were tested using a non-

parametric Spearman rank analysis. Free survival of CVEs and infection episodes were estimated using the Kaplan–Meier curve, and differences between groups were examined using the log-rank test. Univariate Cox regression analysis was used to identify predictors of CVE and infection. Significant predictors were subsequently added to the multivariable model, and backward stepwise Cox regression identified the most parsimonious model. The probability used for the stepwise regression was set at 0.05 for entry of variables and 0.1 for removal of variables. The results of the Cox proportional hazards analysis are presented as the hazard ratio (HR) and 95% confidence interval (95% CI). Statistical significance was considered at $P < 0.05$. All statistical analyses were performed using SPSS version 20.0.

RESULTS

Demographic and Clinical Characteristics of Patients

A total of 404 patients (248 men and 156 women) were enrolled in this study. The average age of patients was 59.4 ± 14.6 years. The median time in HD was 53 (26, 80) months. Of the 404 patients, 94 (23.3%) had diabetes mellitus and 324 (80.2%) had hypertension. The overall frequency of CVD in this cohort was 30.7%; stroke and congestive heart failure were the most prevalent complications, followed by coronary artery disease and peripheral arterial occlusive disease. The underlying kidney diseases included chronic glomerulonephritis (46.8%), diabetic nephropathy (16.8%), polycystic kidney disease (9.4%), hypertension renal disease (3.5%), others (10.9%), and unknown (12.6%). Only one patient (0.2%) was seropositive for CMV-IgM, and 401 patients (99.3%) were seropositive for CMV-IgG. The median level of CMV-IgG was 468 U/ml, and 189 patients (46.8%) had CMV-IgG titers exceeding the upper limit of 500 U/ml. **Table 1** presents the baseline characteristics of the study population.

T-Cell Senescence Is Associated With Systemic Inflammation in HD Patients

We examined the association between T cell subsets and circulating inflammatory markers at enrollment. As shown in **Table 2**, high-sensitivity C-reactive protein (hsCRP) was positively associated with decreased T_{Naive} cell count in both $CD4^+$ and $CD8^+$ T cell compartments ($p < 0.05$). Meanwhile, elevated tumor necrosis factor- α (TNF- α) and interleukin 6 (IL-6) levels were significantly associated with lower $CD4^+$ T_{CM} and higher $CD4^+$ T_{EMRA} levels ($p < 0.001$).

Decreased $CD4^+$ T_{Naive} Cell Count as a Predictor of CVEs in HD Patients

During the 650 ± 176 days of follow-up, 86 patients (21.3%) experienced at least one CVE and a total of 99 CVEs were recorded. The incidence of CVE was 13.4% per year. A total of 42 patients died of CVEs, accounting for 56.8% of all-cause mortality. Furthermore, 32 patients had stroke and 14 died of it; 24 patients developed acute coronary syndrome and 12 died of

TABLE 1 | Demographic data of the study population.

Variable	mean \pm SD/median (interquartile range)
Age, years	59.4 \pm 14.6
Time on HD, months	53 (26,80)
Male (%)	248 (61.4%)
Diabetes mellitus (%)	94 (23.3%)
CVD history (%)	124 (30.7%)
Hypertension (%)	324 (80.2%)
CMV seropositive (%)	401 (99.3%)
BMI (kg/m ²)	21.5 \pm 3.2
Kt/Vurea	1.31 \pm 0.57
Hemoglobin, g/L	112.4 \pm 15.9
White blood cell, $\times 10^9/L$	6.56 \pm 2.02
Lymphocytes, $\times 10^9/L$	1.3 \pm 0.5
Albumin, g/L	39.0 \pm 3.2
Prealbumin, g/L	0.32 \pm 0.13
Creatinine, $\mu\text{mol/L}$	1,000.3 \pm 277.3
Uric acid, mmol/L	441.6 \pm 88.8
Calcium, mmol/L	2.32 \pm 0.24
Phosphorus, mmol/L	2.17 \pm 0.65
Total cholesterol, mmol/L	4.11 \pm 1.07
Triglyceride, mmol/L	1.45 (1.03, 2.23)
LDL-C, mmol/L	2.27 \pm 0.87
HDL-C, mmol/L	1.06 \pm 0.59
Homocysteine, $\mu\text{mol/L}$	34.7 (26.4, 46.6)
NT-proBNP, pg/ml	3,882.0 (1,782.3, 10,324.2)
iPTH, pg/ml	260.7 (150.3, 407.2)
Ferritin, pg/ml	296.9 (139.3, 495.5)
hsCRP, mg/L	4.0 (1.4, 10.2)
TNF- α , pg/ml	33.4 (22.8, 58.8)
IL-6, pg/ml	9.6 (4.2, 36.2)

CVD, cardiovascular disease; CMV, cytomegalovirus; BMI, Body mass index; LDL-C, low density lipoprotein-cholesterol; HDL-C, high density lipoprotein-cholesterol; NT-proBNP, N-terminal pro-brain natriuretic peptide; iPTH, intact parathyroid hormone; hsCRP, high-sensitivity C-reactive protein; TNF- α , tumor necrosis factor- α ; IL-6, interleukin 6.

it; 22 patients experienced at least one event of heart failure and 8 died of it; 12 patients developed lower extremity atherosclerotic occlusive disease and 4 died of it; and 4 patients died of sudden cardiac death. The median value of each T cell parameter was used in analyzing the correlation between CVEs. A lower absolute number/percentage of $CD4^+$ T_{Naive} as well as a higher percentage of $CD4^+$ T_{EM} and $CD8^+$ T_{EM} could significantly predict CVEs (**Figure S2**). When taking age into consideration, only $CD4^+$ T_{Naive} cells were shown to significantly predict CVEs. In the pairwise comparison, patients with a lower $CD4^+$ T_{Naive} count had a significantly higher CVE incidence in both the middle-aged [$36 < \text{age (years)} \leq 65$, $p = 0.014$] and old (age > 65 years old, $p = 0.003$) groups. There was no difference in CVE incidence between middle-aged patients with a lower $CD4^+$ T_{Naive} count and old patients with a higher $CD4^+$ T_{Naive} count (**Figure 1**). In the univariate Cox proportional hazard model, other CVE predictors included older age, history of CVD and diabetes mellitus, usage of central venous catheter, lower serum levels of albumin, prealbumin, creatinine, and uric acid, and increased levels of white blood cell count, hsCRP, and N-terminal pro-brain natriuretic peptide (NT-proBNP) (**Table 3**). In the multivariate Cox hazard model, a decreased count of $CD4^+$ T_{Naive} cells along with older age, history of diabetes, history of CVD, as well as elevated white blood cell count and

TABLE 2 | Correlations between T cell subsets and inflammatory markers in hemodialysis patients.

	TNF- α		IL-6		hsCRP	
	Correlation coefficient	<i>p</i>	Correlation coefficient	<i>p</i>	Correlation coefficient	<i>p</i>
Cell subset percentage						
CD4 ⁺ T cells %	-0.198**	<0.001	-0.093	0.062	0.005	NS
CD4 ⁺ T _{Naïve} %	0.015	NS	0.026	NS	-0.097	0.052
CD4 ⁺ T _{CM} %	-.225**	<0.001	-.248**	<0.001	0.071	NS
CD4 ⁺ T _{EM} %	-0.032	NS	-0.016	NS	0.096	0.054
CD4 ⁺ T _{EMRA} %	0.321**	<0.001	0.312**	<0.001	-0.034	NS
CD8 ⁺ T cells%	0.180**	<0.001	0.05	NS	-0.002	NS
CD8 ⁺ T _{Naïve} %	-0.016	NS	-0.023	NS	-0.146*	0.003
CD8 ⁺ T _{CM} %	-0.083	0.095	-0.046	NS	0.052	NS
CD8 ⁺ T _{EM} %	-0.121*	0.015	-0.061	NS	0.100*	0.045
CD8 ⁺ T _{EMRA} %	0.104*	0.037	0.073	NS	0.073	NS
Absolute cell number						
CD4 ⁺ T cells (cells/ μ l)	-0.085	0.089	-0.129*	0.01	-0.062	NS
CD4 ⁺ T _{Naïve} (cells/ μ l)	-0.058	NS	-0.085	0.087	-0.108*	0.03
CD4 ⁺ T _{CM} (cells/ μ l)	-0.215*	0.001	-0.260*	0.001	0.012	NS
CD4 ⁺ T _{EM} (cells/ μ l)	-0.021	NS	-0.075	NS	0.043	NS
CD4 ⁺ T _{EMRA} (cells/ μ l)	0.242*	0.001	0.205*	0.001	-0.063	NS
CD8 ⁺ T cells (cells/ μ l)	0.075	NS	-0.059	NS	-0.035	NS
CD8 ⁺ T _{Naïve} (cells/ μ l)	0.033	0.051	-0.062	NS	-0.148*	0.003
CD8 ⁺ T _{CM} (cells/ μ l)	-0.07	NS	-0.084	0.093	0.013	NS
CD8 ⁺ T _{EM} (cells/ μ l)	-0.033	NS	-0.103*	0.039	0.044	NS
CD8 ⁺ T _{EMRA} (cells/ μ l)	-0.016	NS	0.044	NS	0.046	NS

Spearman rank analysis was applied to investigate the relationship between inflammatory markers and T cell subset level, including the percentages as well as absolute cell counts of naive (T_{Naïve}), central memory (T_{CM}), effector memory (T_{EM}), and effector memory CD45RA (T_{EMRA}) subsets. **p* value < 0.05. ***p* value < 0.001. NS, non-significant, *p* value > 0.1.

NT-proBNP was independently associated with CVEs (HR 0.430, 95% CI 0.253–0.731, *p* = 0.002).

Decreased CD8⁺ T_{Naïve} Cell Count as a Predictor of Infection Episodes in HD Patients

A total of 90 patients (22.3%) experienced at least one infectious episode and 16 died of it, which accounted for 21.6% of all-cause

mortality. The incidence of infection was 15.6% per year. A total of 97 infectious events were recorded. The following infections were reported: pulmonary infections [n = 55 (56.7%)], dialysis access-related infections [n = 14 (14.4%)], skin or joint infections [n = 9 (9.3%)], urinary or abdominal infections [n = 10 (10.3%)], septic shock [n = 3 (3.1%)], and infections at other sites or undocumented sites [n = 6 (6.2%)]. The median value of each T cell parameter was used for analyzing the correlation between

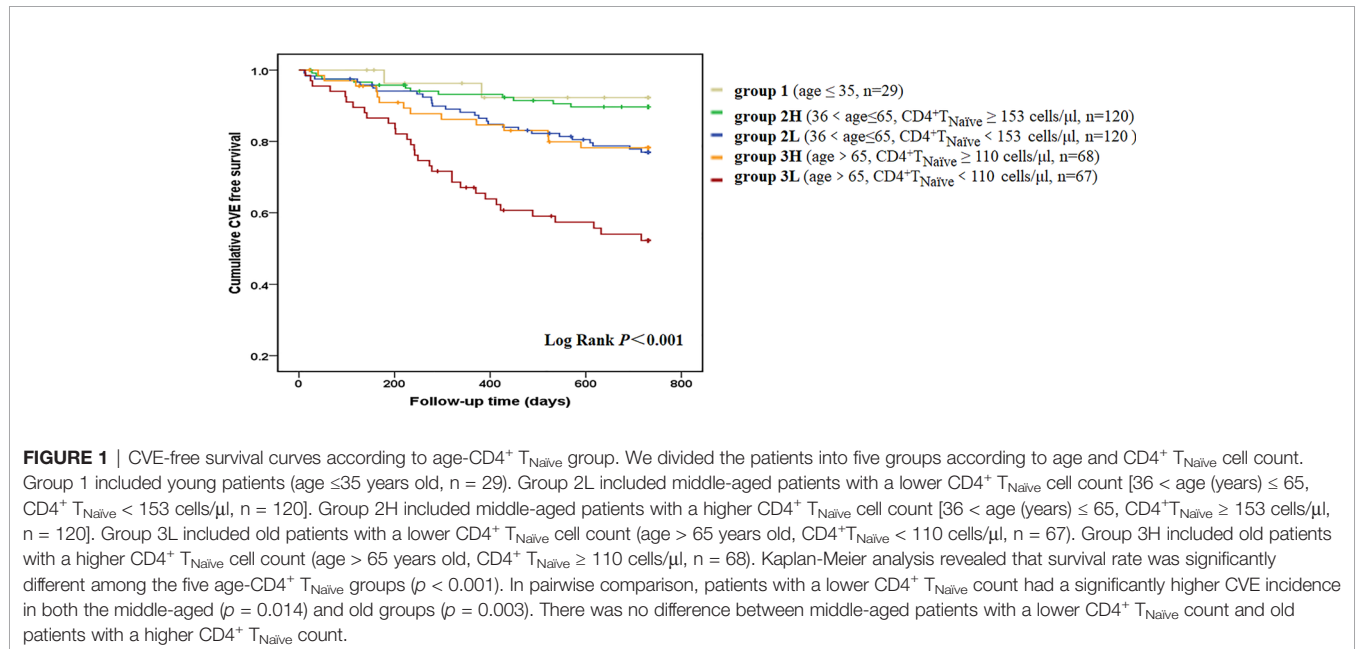


TABLE 3 | Cox hazard model for CVEs in hemodialysis patients.

Variables	Univariate Cox hazard model		Multivariate Cox hazard model ¹	
	HR (95% CI)	P value	HR (95% CI)	P value
Age (≥65 years old = 1)	2.967 (1.929, 4.564)	<0.001	1.747 (1.068, 2.857)	0.026
Sex (male = 1)	1.263 (0.810, 1.968)	0.303		
Diabetes mellitus (yes = 1)	2.767 (1.802, 4.249)	<0.001	1.687 (1.060, 2.683)	0.027
CVD (yes = 1)	5.169 (3.323, 8.034)	<0.001	3.118 (1.839, 5.286)	<0.001
Central venous catheter (yes = 1)	2.137 (1.383, 3.302)	<0.001		
BMI (kg/m ²)	0.961 (0.902, 1.024)	0.275		
Kt/Vurea	0.556 (0.288, 1.074)	0.081		
Time on HD (month)	0.996 (0.991, 1.001)	0.108		
CMV IgG (U/ml) ²	1.003 (1.000, 1.007)	0.084		
Hemoglobin (g/L)	0.989 (0.976, 1.003)	0.116		
White blood cell (×10 ⁹ /L)	1.111 (1.011, 1.220)	0.029	1.155 (1.040, 1.283)	0.007
Albumin (g/L)	0.859 (0.804, 0.916)	<0.001		
Prealbumin (g/L)	0.023 (0.003, 0.199)	0.001		
Creatinine (μmol/L)	0.998 (0.998, 0.999)	<0.001		
Uric acid (mmol/L)	0.995 (0.993, 0.998)	<0.001		
Triglyceride (mmol/L)	0.804 (0.649, 0.996)	0.045		
LDL-C (mmol/L)	0.974 (0.758, 1.251)	0.835		
Phosphorus (mmol/L)	0.928 (0.664, 1.295)	0.660		
Calcium (mmol/L)	0.723 (0.297, 1.759)	0.475		
Log-iPTH (pg/ml)	1.107 (0.616, 1.989)	0.735		
β2-Microglobulin (mg/L)	1.012 (0.986, 1.040)	0.371		
Homocysteine (μmol/L)	1.001 (0.995, 1.007)	0.705		
Log-hsCRP (mg/L)	2.058 (1.439, 2.943)	<0.001		
Log-NT-proBNP (pg/ml)	4.407 (2.777, 6.994)	<0.001	2.388 (1.409, 4.048)	0.001
CD4 ⁺ T _{Naïve} count (≥137 cells/μl = 1)	0.352 (0.219, 0.553)	<0.001	0.430 (0.253, 0.731)	0.002
CD4 ⁺ T _{Naïve} % (≥36.7 = 1)	0.505 (0.325, 0.784)	0.002		
CD4 ⁺ T _{EM} % (≥33.2 = 1)	1.987 (1.279, 3.087)	0.002		
CD8 ⁺ T _{EM} % (≥22.0 = 1)	1.770 (1.143, 2.741)	0.011		

CVD, cardiovascular disease; BMI, Body mass index; HD, hemodialysis; CMV IgG, cytomegalovirus immunoglobulin G; LDL-C, low density lipoprotein-cholesterol; Log-iPTH, log transformed intact parathyroid hormone; Log-hsCRP, log transformed high-sensitivity C-reactive protein; Log-NT-proBNP, log transformed N-terminal pro-brain natriuretic peptide. T_{Naïve}, naïve T cell; T_{EM}, effector memory T cell.

¹Backward conditional method was used. Model included each T cell parameters and was adjusted for age, gender, history of CVD, history of diabetes, types of vascular access, Kt/Vurea, CMV IgG, albumin, prealbumin, white blood cell, creatinine, uric acid, triglyceride, LDL-C, NT-proBNP, and hsCRP.

²For those with CMV-IgG titers exceeding the upper limit of 500 U/ml, the numbers were regarded as 500 U/ml.

infections. Decreased absolute count/percentage of CD8⁺ T_{Naïve} and increased percentage of CD8⁺ T_{EMRA} cells were significant predictors of infection (**Figure S3**). Although aging contributes to both infection and depletion of CD8⁺ T_{Naïve} cells, patients with a lower CD8⁺ T_{Naïve} count in the middle-aged group [36 < age (years) ≤ 65] had a significantly higher infection incidence than those with a higher CD8⁺ T_{Naïve} count in the same age group ($p = 0.04$) (**Figure 2**). Other infection event predictors included a history of CVD, usage of central venous catheter, decreased levels of hemoglobin, albumin, prealbumin, creatinine, and uric acid, and increased serum levels of hsCRP, NT-proBNP, ferritin, and globulin (**Table 4**). In the multivariate Cox hazard model, a decreased count of CD8⁺ T_{Naïve} cells was independently associated with infection episodes in HD patients (HR 0.460, 95% CI 0.279–0.758, $p = 0.002$).

DISCUSSION

In the current study, CVEs and infections were the major complications accounting for more than 70% of all-cause mortality. Our study finding indicates that a decreased level of

CD4⁺ naïve T cells is a strong predictor of CVEs, while a decreased level of CD8⁺ naïve T cells is a strong predictor of infectious episodes in HD patients. Loss of naïve T cells might be a hallmark of immune disturbance, leading to a more intense immune incompetence with profound clinical outcomes.

In the original model of the T cell system, naïve T cells are activated in the presence of infection, which then proliferate and generate heterogeneous classes of effector and memory cells with distinctive surface phenotypes, cytokine production abilities, and homing potentials (18). The T cell system has unique mechanisms of replenishment. Thymic T cell generation is the only way to add novel naïve T cells and enrich diversity; however, thymic function rapidly declines during adolescence and early adulthood and is quantitatively irrelevant throughout adult life (19). Instead, homeostatic proliferation is responsible for maintaining the size of the naïve T cell compartment and sustaining the richness of the T cell receptor repertoire (20). Generally, homeostatic proliferation in humans is efficient in maintaining a sizable CD4⁺ naïve T cell pool (21). CD8⁺ naïve T cells, on the contrary, are progressively lost with age, which induces a higher homeostatic proliferation of aged-CD8⁺ naïve T cells than that of aged-CD4⁺ naïve T cells (20).

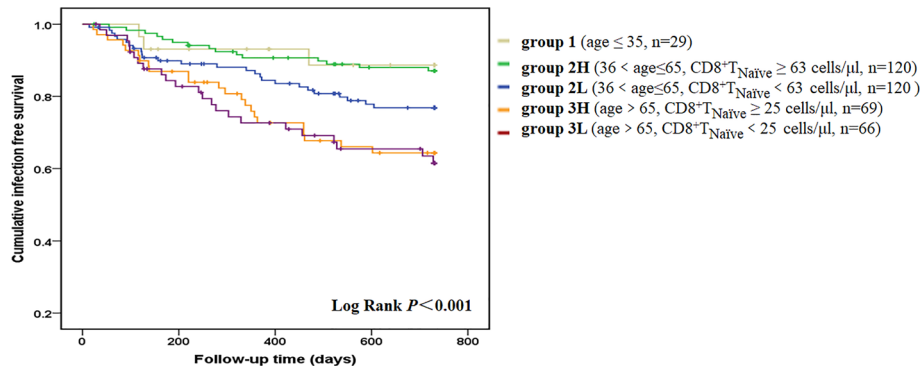


FIGURE 2 | Infection-free survival curves according to age-CD8⁺ T_{Naive} group. We divided the patients into five groups according to age and CD8⁺ T_{Naive} cell count. Group 1 included young patients (age ≤ 35 years old, n = 29). Group 2L included middle-aged patients with a lower CD8⁺ T_{Naive} cell count [36 < age (years) ≤ 65, CD8⁺ T_{Naive} < 63 cells/μl, n = 120]. Group 2H included middle-aged patients with a higher CD8⁺ T_{Naive} cell count [36 < age (years) ≤ 65, CD8⁺ T_{Naive} ≥ 63 cells/μl, n = 120]. Group 3L included old patients with a lower CD8⁺ T_{Naive} cell count (age > 65 years old, CD8⁺ T_{Naive} < 25 cells/μl, n = 66). Group 3H included old patients with a higher CD8⁺ T_{Naive} cell count (age > 65 years old, CD8⁺ T_{Naive} ≥ 25 cells/μl, n = 69). Kaplan-Meier analysis revealed that survival rate was significantly different among the five age-CD8⁺ T_{Naive} groups ($p < 0.001$). In pairwise comparison, old patients had a significantly higher infection incidence, regardless of the CD8⁺ T_{Naive} cell count. Patients with a lower CD8⁺ T_{Naive} count in the middle-aged group had a significantly higher infection incidence than those with a higher CD8⁺ T_{Naive} count in the same age group ($p = 0.04$).

To the best of our knowledge, this is the first study to identify a decrease in CD4⁺ naïve T cells as a novel CVE risk factor and a decrease in CD8⁺ naïve T cells as a novel infection risk factor in patients with ESRD. Notably, compelling data suggest profound lymphopenia of naïve T cells in both the CD4⁺ and CD8⁺ compartments in ESRD (15, 22), although the underlying mechanism is not sufficiently understood. It is evident from the literature that there is a reduced thymic output in ESRD (15, 22); however, the more important reason seems to be the failure to maintain quiescence in these cell compartments. Maintenance of quiescence is vital for naïve T cells to retain their self-renewal potential and differentiation plasticity throughout life. In circumstances of inflammation, T cells can leave their usual quiescent state and accumulate as partially differentiated cells, even in the absence of antigen stimulation (23, 24). In ESRD, inflammation is significantly enhanced with uremia (25), and dialysis treatment certainly exposes these patients to microbial products and other antigenic stimulations, which can lead to accelerated activation and turnover of naïve T cells. Thus, chronic inflammation could be responsible for the decreased naïve T cells in ESRD patients, which is supported by our finding that decreased levels of naïve T cells were correlated with elevated levels of the inflammation marker hsCPR in both CD4⁺ and CD8⁺ compartments. In earlier studies on aging, the decline in naïve T cells and relative expansion of memory and effector T cell populations were entirely due to chronic CMV stimulation (26). In this context, chronic immune stimulation could be the reason for accelerated T cell aging in ESRD patients, including at least the prevalent CMV infection, renal damage, uremia toxin retention, and increased reactive oxygen species generation. Any attempts to maintain the naïve T cell pool eventually lead to its further depletion and extinction, as such attempts result in the partial loss of stemness and incomplete

differentiation and activation of negative regulatory programs (20, 27). In this context, decreased naïve T cells could represent their maladaptive behavior in ageing and even trigger a vicious cycle of aggravated immunosenescence. This is more so in case of CD4⁺ naïve T cells, as their shrinkage is not common during normal aging. Besides chronic kidney diseases, rheumatoid arthritis is another pathological condition wherein there are several lines of evidence of premature aging of T cells, indicating a defective DNA repair mechanism in CD4⁺ naïve T cells (28, 29). T cell senescence should be included in the assertion that cellular senescence is an emerging cardiovascular risk factor along with senescence of the endothelial and vascular smooth muscle cells (30, 31). We have reported that the absolute numbers of CD8⁺ naïve T cells decreased significantly with age in a nearly parallel pattern in HD patients aged 20–89 years (16). In the current study, we found that the levels of CD8⁺ naïve T cells dropped to an extremely low level in HD patients older than 65 years, which could explain why we did not find a significant correlation between CD8⁺ naïve T cells and infection in these patients. In the middle-aged patients, a decreased CD8⁺ naïve T cell count was significantly related to a higher risk of infection episodes. This could be attributed to a decreased T cell receptor diversity in naïve T cells, which are not only vital for a primary T cell response but continue to be a resource for T cell responses to antigens previously encountered. On the contrary, chronic immune stimulation, such as that by CMV infection, can also lead to the clonal expansion of the T cell population, which can severely compromise repertoire diversity. Recent studies indicated that ESRD patients present reduced T cell receptor diversity with clonal expansion (32, 33), leading to a high incidence of infection in these patients.

Generated from naïve T cells, T_{CM} cells home to lymph nodes, lack potent effector functions, and mount rapid

TABLE 4 | Cox hazard model for infection incident in hemodialysis patients.

Variables	Univariate Cox hazard model		Multivariate Cox hazard model ¹	
	HR (95% CI)	P value	HR (95% CI)	P value
Age (≥65 years old = 1)	2.514 (1.658, 3.813)	<0.001		
Sex (male = 1)	1.207 (0.784, 1.858)	0.394		
Diabetes mellitus (yes = 1)	1.213 (0.755, 1.949)	0.425		
CVD (yes = 1)	1.724 (1.130, 2.630)	0.011		
Central venous catheter (yes = 1)	2.653(1.744, 4.036)	<0.001	2.225 (1.416, 3.497)	0.001
BMI (kg/m ²)	0.985 (0.925, 1.048)	0.626		
Kt/Vurea	0.777 (0.481, 1.255)	0.303		
Time on HD (month)	0.999 (0.995, 1.003)	0.700		
Hemoglobin (g/L)	0.978 (0.967, 0.990)	<0.001	0.983 (0.970, 0.997)	0.014
White blood cell (×10 ⁹ /L)	1.013 (0.915, 1.122)	0.800		
Albumin (g/L)	0.864 (0.812, 0.920)	<0.001		
Globulin (g/L)	1.048 (1.003, 1.095)	0.036	1.039 (0.996, 1.084)	0.074
Prealbumin (g/L)	0.079 (0.011, 0.540)	0.010		
Creatinine (μmol/L)	0.998 (0.998, 0.999)	<0.001		
Uric acid (mmol/L)	0.997 (0.994, 0.999)	0.007		
Phosphorus (mmol/L)	0.794 (0.571, 1.104)	0.171		
Calcium (mmol/L)	1.136 (0.475, 2.716)	0.775		
Log-iPTH (pg/ml)	0.902 (0.517, 1.573)	0.717		
Log-hsCRP (mg/L)	1.780 (1.268, 2.498)	<0.001		
Log-NT-proBNP (pg/ml)	2.180 (1.403, 3.388)	0.001	1.559 (0.977, 2.488)	0.062
Log-ferritin (pg/ml)	1.729 (1.002, 2.983)	0.049		
CD8 ⁺ T _{Naive} count (≥46 cells/μl = 1)	0.469 (0.304, 0.725)	<0.001	0.460 (0.279, 0.758)	0.002
CD8 ⁺ T _{Naive} % (≥19.7 = 1)	0.420 (0.270, 0.654)	<0.001		
CD8 ⁺ T _{EMRA} % (≥50.3 = 1)	1.902 (1.239, 2.920)	0.003	1.549 (0.978, 2.453)	0.062

CVD, cardiovascular disease; BMI, Body mass index; HD, hemodialysis; Log-iPTH, log transformed intact parathyroid hormone; Log-hsCRP, log transformed high-sensitivity C-reactive protein; Log-NT-proBNP, log transformed N-terminal pro-brain natriuretic peptide; T_{Naive}, naïve T cell; T_{EMRA}, T effector memory CD45RA cells.

¹Backward conditional method was used. Model included each T cell parameters and was adjusted for age, history of CVD, history of diabetes, types of vascular access, hemoglobin, albumin, prealbumin, creatinine, uric acid, globulin, ferritin, NT-proBNP, and hsCRP.

secondary responses upon re-exposure to antigens. T_{EM} cells migrate to peripheral tissues and display immediate effector function at the sites of inflammation. T_{EMRA} cells are usually considered to be at an advanced stage of differentiation and are promoted by homeostatic cytokines or low load but protracted antigen exposure (34, 35). T_{EMRA} cells share the same characteristics as senescent cells, such as possessing short telomeres, DNA damage foci, and a secretome of senescence-associated secretory phenotype (36). Consistent with the concept that senescent cells exert systemic detrimental effects, T_{EMRA} cells have been implicated in several chronic disease states, such as rheumatoid arthritis, acute coronary syndromes, as well as poor vaccine responses (37–39). In the current study, T_{EMRA} cells were correlated with proinflammatory cytokines, such as TNF- α and IL-6. It is hard to distinguish causality between inflammation and expanded T_{EMRA} cells. In the present study, a higher percentage of T_{EM} cells was associated with CVEs, and a higher percentage of CD8⁺ T_{EMRA} cells was associated with infection. However, after including naïve T cells in the model, the association between these cells and clinical events diminished, indicating that an increase in differentiated T cells might partly be due to the decrease in naïve T cells; this is partly explained by some epigenetic studies (40, 41).

Overall, T-cell senescence in HD patients is markedly evident, and the contraction of the naïve T cell pool may act as a major player in developing CVEs and infections in these patients. Mechanistic studies on T cell homeostasis are needed in these patients. The central theme emerging from our finding is to

alleviate chronic inflammation and promote cellular quiescence. Modifying HD therapy seems to be a feasible way to ameliorate T-cell inflammation and improve immunity against pathogens using antioxidant electrolyzed-reduced water (42) and introducing hemodiafiltration (43). To the best of our knowledge, only one study has investigated these T cell parameters in healthy individuals for each decade, with T cell subsets defined by co-expression of CD95 and CD62L, and reported that an increased absolute number of CD8⁺ memory T cells (CD95⁺CD62L⁻) correlated with increased mortality (44). Few other studies have reported the relevance of T-cell senescence to morbidity in the aged population. One study conducted in 1,072 elderly individuals from a nursing home indicated that a decreased percentage of CD4⁺ naïve T cells and CD8⁺ T_{EM} cells was correlated with frailty (45). In a case-control study conducted in 122 women aged 65 and above, no significant correlation was observed in naïve nor memory T cells between cases and controls (46). However, these studies did not take absolute count of these T cell parameters into consideration, which could miss the vital date of T-cell senescence in aged individuals. Thus, studying T-cell senescence in patients with ESRD can help to shed light onto the alteration of immune function in the general aged population.

Our study had several limitations. First, it remains unclear whether inflammation is the cause or the consequence of T-cell senescence. Second, T-cell senescence can be assessed by several other markers, such as telomere length, recent thymic emigrants, CD57, and CD28. This study cannot exclude the impact of these

unmeasured parameters. Of particular interest is the fact that CMV infection has a substantial impact on T-cell senescence. In the current study, nearly all patients were seropositive for CMV-IgG, and half of them had an extremely high CMV-IgG titer, which could lead to underestimation of the relevance of CMV infection and T-cell senescence in HD patients. Finally, this was a single-center study, which might potentially limit the statistical power and its external validity. Hence, further studies are needed in this area to gain a deeper understanding.

In conclusion, HD patients exhibited accelerated immunosenescence in the T lymphocyte compartment, and these changes were positively related to inflammation. A reduction of naïve T cells was shown to be a strong predictor of CVEs and infection episodes in these patients. Monitoring naïve T cells could be useful for the early identification of patients at a high risk of profound complications.

DATA AVAILABILITY STATEMENT

The raw data supporting the conclusions of this article will be made available by the authors, without undue reservation.

ETHICS STATEMENT

The studies involving human participants were reviewed and approved by Ethical Committee, Zhongshan Hospital, Fudan

REFERENCES

- Thomas B, Wulf S, Bikbov B, Perico N, Cortinovis M, Courville DVK, et al. Maintenance Dialysis throughout the World in Years 1990 and 2010. *J Am Soc Nephrol* (2015) 26(11):2621–33. doi: 10.1681/ASN.2014101017
- Patient mortality and survival. United States Renal Data System. *Am J Kidney Dis* (1998) 32:S69–80. doi: 10.1053/ajkd.1998.v32.pm9713409
- Charytan DM, Lewis EF, Desai AS, Weinrauch LAM, Ivanovich PM, Toto RDM, et al. Cause of Death in Patients With Diabetic CKD Enrolled in the Trial to Reduce Cardiovascular Events With Aranesp Therapy (TREAT). *Am J Kidney Dis* (2015) 66(3):429–40. doi: 10.1053/j.ajkd.2015.02.324
- Stenvinkel P, Larsson TE. Chronic Kidney Disease: A Clinical Model of Premature Aging. *Am J Kidney Dis* (2013) 62(2):339–51. doi: 10.1053/j.ajkd.2012.11.051
- Crépin T, Legendre M, Carron C, Vachey C, Courivaud C, Rebibou J, et al. Uraemia-induced immune senescence and clinical outcomes in chronic kidney disease patients. *Nephrol Dial Transplantation* (2020) 35(4):624–32. doi: 10.1093/ndt/gfy276
- Meijers RW, Litjens NH, de Wit EA, Langerak AW, van der Spek A, Baan CC, et al. Uremia causes premature ageing of the T cell compartment in end-stage renal disease patients. *Immun Ageing* (2012) 9(1):19. doi: 10.1186/1742-4933-9-19
- Betjes MG, Langerak AW, van der Spek A, de Wit EA, Litjens NH. Premature aging of circulating T cells in patients with end-stage renal disease. *Kidney Int* (2011) 80(2):208–17. doi: 10.1038/ki.2011.110
- Litjens NHR, van Druningen CJ, Betjes MG. Progressive loss of renal function is associated with activation and depletion of naïve T lymphocytes. *Clin Immunol (Orlando Fla.)* (2006) 118(1):83–91. doi: 10.1016/j.clim.2005.09.007
- Meier P, Dayer E, Blanc E, Wauters J. Early T cell activation correlates with expression of apoptosis markers in patients with end-stage renal disease. *J Am Soc Nephrol* (2002) 13(1):204–12.
- Litjens N, Huisman M, Dorpel M, Betjes M. Impaired immune responses and antigen-specific memory CD4+ T cells in hemodialysis patients. *J Am Soc Nephrol* (2008) 19(8):1483–90. doi: 10.1681/ASN.2007090971
- Sester U, Schmidt T, Kuhlmann MK, Gärtner BC, Uhlmann-Schiffler H, Sester M. Serial influenza-vaccination reveals impaired maintenance of specific T-cell memory in patients with end-stage renal failure. *Vaccine* (2013) 31(38):4111–20. doi: 10.1016/j.vaccine.2013.06.076
- Betjes MG, de Wit EE, Weimar W, Litjens NH. Circulating pro-inflammatory CD4posCD28null T cells are independently associated with cardiovascular disease in ESRD patients. *Nephrol Dial Transplant* (2010) 25(11):3640–6. doi: 10.1093/ndt/gfq203
- Yang TO, Chuang YF, Chiu YL. T-cell aging in end-stage renal disease: an evolving story with CMV. *Med Microbiol Immunol* (2019) 208(3–4):281–7. doi: 10.1007/s00430-019-00596-8
- Litjens NH, de Wit EA, Betjes MG. Differential effects of age, cytomegalovirus-seropositivity and end-stage renal disease (ESRD) on circulating T lymphocyte subsets. *Immun Ageing* (2011) 8(1):2. doi: 10.1186/1742-4933-8-2
- Chiu YL, Shu KH, Yang FJ, Chou TY, Chen PM, Lay FY, et al. A comprehensive characterization of aggravated aging-related changes in T lymphocytes and monocytes in end-stage renal disease: the iESRD study. *Immun Ageing* (2018) 15:27. doi: 10.1186/s12979-018-0131-x
- Xiang F, Chen R, Cao X, Shen B, Chen X, Ding X, et al. Premature aging of circulating T cells predicts all-cause mortality in hemodialysis patients. *BMC Nephrol* (2020) 21(1):271. doi: 10.1186/s12882-020-01920-8
- Ruud WM, Betjes MG. T-cell ageing in end-stage renal disease patients: Assessment and clinical relevance. *World J Nephrol* (2014) 3(4):268–76. doi: 10.5527/wjn.v3.i4.268
- Sprent J, Surh CD. Normal T cell homeostasis: the conversion of naïve cells into memory-phenotype cells. *Nat Immunol* (2011) 12(6):478–84. doi: 10.1038/ni.2018

University. The patients/participants provided their written informed consent to participate in this study.

AUTHOR CONTRIBUTIONS

FX analyzed the data and drafted the manuscript. BS and JZ made the diagnosis and designed the experiments. XD, XHC, and ZZ revised the manuscript. FX and XSC collected the data. All authors contributed to the article and approved the submitted version.

FUNDING

This work was supported by Natural Science Foundation of China (No. 82000705), Shanghai Municipal Hospital Frontier Technology Project supported by Shanghai Shen Kang Hospital Development Center (No. SHDC12018127), and Shanghai “science and technology innovation plan” popular science project (No. 19DZ2321400).

SUPPLEMENTARY MATERIAL

The Supplementary Material for this article can be found online at: <https://www.frontiersin.org/articles/10.3389/fimmu.2021.644627/full#supplementary-material>

19. Palmer DB. The effect of age on thymic function. *Front Immunol* (2013) 4:316–6. doi: 10.3389/fimmu.2013.00316
20. Goronzy JJ, Fang F, Cavanagh MM, Weyand CM. Naive T cell maintenance and function in human aging. *J Immunol* (2015) 194(9):4073–80. doi: 10.4049/jimmunol.1500046
21. Westera L, van Hoeven V, Drylewicz J, Spiereburg G, van Velzen JF, de Boer RJ, et al. Lymphocyte maintenance during healthy aging requires no substantial alterations in cellular turnover. *Aging Cell* (2015) 14(2):219–27. doi: 10.1111/acel.12311
22. Yoon JW, Gollapudi S, Pahl MV, Vaziri ND. Naïve and central memory T-cell lymphopenia in end-stage renal disease. *Kidney Int* (2006) 70(2):371–6. doi: 10.1038/sj.ki.5001550
23. Cheng T, Rodrigues N, Shen H, Yang Y, Dombkowski D, Sykes M, et al. Hematopoietic Stem Cell Quiescence Maintained by p21cip1/waf1. *Sci (American Assoc Advancement Science)* (2000) 287(5459):1804–8. doi: 10.1126/science.287.5459.1804
24. Goronzy JJ, Li G, Yang Z, Weyand CM. The janus head of T cell aging - autoimmunity and immunodeficiency. *Front Immunol* (2013) 4:131. doi: 10.3389/fimmu.2013.00131
25. Stenvinkel P. Inflammation in end-stage renal failure: could it be treated? *Nephrol Dial Transplant* (2002) 17 Suppl 8:33–8; discussion 40. doi: 10.1093/ndt/17.suppl_8.33
26. Wertheimer AM, Bennett MS, Park B, Uhrlaub JL, Martinez C, Pulko V, et al. Aging and cytomegalovirus infection differentially and jointly affect distinct circulating T cell subsets in humans. *J Immunol* (1950) (2014) 192(5):2143–55. doi: 10.4049/jimmunol.1301721
27. Goronzy JJ, Weyand CM. Successful and Maladaptive T Cell Aging. *Immunity* (2017) 46(3):364–78. doi: 10.1016/j.immuni.2017.03.010
28. Yang Z, Shen Y, Oishi H, Matteson EL, Tian L, Goronzy JJ, et al. Restoring oxidant signaling suppresses proarthritisogenic T cell effector functions in rheumatoid arthritis. *Sci Trans Med* (2016) 8(331):331ra38–331ra38. doi: 10.1126/scitranslmed.aad7151
29. Li Y, Goronzy JJ, Weyand CM. DNA damage, metabolism and aging in pro-inflammatory T cells: Rheumatoid arthritis as a model system. *Exp gerontology* (2018) 105:118–27. doi: 10.1016/j.exger.2017.10.027
30. Minamino T, Miyachi H, Yoshida T, Ishida Y, Yoshida H, Komuro I. Endothelial cell senescence in human atherosclerosis: role of telomere in endothelial dysfunction. *Circulation* (2002) 105(13):1541–4. doi: 10.1161/01.CIR.0000013836.85741.17
31. Erusalimsky JD, Kurz DJ. Cellular senescence in vivo: its relevance in ageing and cardiovascular disease. *Exp Gerontol* (2005) 40(8-9):634–42. doi: 10.1016/j.exger.2005.04.010
32. Crawford DC, Bailey JNC, Miskimen K, Miron P, McCauley JL, Sedor JR, et al. Somatic T-cell Receptor Diversity in a Chronic Kidney Disease Patient Population Linked to Electronic Health Records. *AMIA Summits Trans Sci Proc* (2018) 2017:63–71.
33. Huang L, Betjes M, Klepper M, Langerak AW, Baan CC, Litjens N. End-Stage Renal Disease Causes Skewing in the TCR Vbeta-Repertoire Primarily within CD8(+) T Cell Subsets. *Front Immunol* (2017) 8:1826. doi: 10.3389/fimmu.2017.01826
34. Harari A, Enders FB, Cellera C, Bart P, Pantaleo G. Distinct Profiles of Cytotoxic Granules in Memory CD8 T Cells Correlate with Function, Differentiation Stage, and Antigen Exposure. *J Virol* (2009) 83(7):2862–71. doi: 10.1128/JVI.02528-08
35. Harari A, Vallelian F, Pantaleo G. Phenotypic heterogeneity of antigen-specific CD4 T cells under different conditions of antigen persistence and antigen load. *Eur J Immunol* (2004) 34(12):3525–33. doi: 10.1002/eji.200425324
36. Akbar AN, Henson SM. Are senescence and exhaustion intertwined or unrelated processes that compromise immunity? *Nat Rev Immunol* (2011) 11(4):289–95. doi: 10.1038/nri2959
37. Martens PB, Goronzy JJ, Schaid D, Weyand CM. Expansion of unusual CD4+ T cells in severe rheumatoid arthritis. *Arthritis Rheumatism* (1997) 40(6):1106–14. doi: 10.1002/art.1780400615
38. Liuzzo G, Goronzy JJ, Yang H, Kopecky SL, Holmes DR, Frye RL, et al. Monoclonal T-cell proliferation and plaque instability in acute coronary syndromes. *Circulation* (2000) 101(25):2883–8. doi: 10.1161/01.CIR.101.25.2883
39. Goronzy JJ, Fulbright JW, Crowson CS, Poland GA, O'Fallon WM, Weyand CM. Value of immunological markers in predicting responsiveness to influenza vaccination in elderly individuals. *J Virol* (2001) 75(24):12182–7. doi: 10.1128/JVI.75.24.12182-12187.2001
40. Moskowitz DM, Zhang DW, Hu B, Le Saux S, Yanes RE, Ye Z, et al. Epigenomics of human CD8 T cell differentiation and aging. *Sci Immunol* (2017) 2(8):eaag0192. doi: 10.1126/sciimmunol.aag0192
41. Sen DR, Kaminski J, Barnitz RA, Kurachi M, Gerdemann U, Yates KB, et al. The epigenetic landscape of T cell exhaustion. *Science* (2016) 354(6316):1165–9. doi: 10.1126/science.aae0491
42. Huang K, Hsu S, Yang C, Ou-Yang P, Lee K, Morisawa S, et al. Electrolysed-reduced water dialysate improves T-cell damage in end-stage renal disease patients with chronic haemodialysis. *Nephrol Dial Transplant* (2010) 25(8):2730–7. doi: 10.1093/ndt/gfq082
43. Nongnuch A, Ngampongpan W, Srichatrapimuk S, Wongs A, Thongpraphai S, Boonarkart C, et al. Immune response to influenza vaccination in ESRD patients undergoing hemodialysis vs. hemodiafiltration. *PLoS One* (2020) 15(2):e0227719. doi: 10.1371/journal.pone.0227719
44. Provinciali M, Moresi R, Donnini A, Lisa RM. Reference values for CD4+ and CD8+ T lymphocytes with naive or memory phenotype and their association with mortality in the elderly. *Gerontology* (2009) 55(3):314–21. doi: 10.1159/000199451
45. Johnstone J, Parsons R, Botelho F, Millar J, McNeil S, Fulop T, et al. T-Cell Phenotypes Predictive of Frailty and Mortality in Elderly Nursing Home Residents. *J Am Geriatrics Soc (JAGS)* (2017) 65(1):153–9. doi: 10.1111/jgs.14507
46. Semba RD, Margolick JB, Leng S, Walston J, Ricks MO, Fried LP. T cell subsets and mortality in older community-dwelling women. *Exp Gerontol* (2005) 40(1-2):81–7. doi: 10.1016/j.exger.2004.09.006

Conflict of Interest: The authors declare that the research was conducted in the absence of any commercial or financial relationships that could be construed as a potential conflict of interest.

Copyright © 2021 Xiang, Cao, Chen, Zhang, Ding, Zou and Shen. This is an open-access article distributed under the terms of the Creative Commons Attribution License (CC BY). The use, distribution or reproduction in other forums is permitted, provided the original author(s) and the copyright owner(s) are credited and that the original publication in this journal is cited, in accordance with accepted academic practice. No use, distribution or reproduction is permitted which does not comply with these terms.