



The Dual Roles of Human $\gamma\delta$ T Cells: Anti-Tumor or Tumor-Promoting

Yang Li^{1†}, Gen Li^{1†}, Jian Zhang¹, Xiaoli Wu^{2*} and Xi Chen^{3*}

¹ School of Chinese Materia Medica, Tianjin University of Traditional Chinese Medicine, Tianjin, China, ² School of Life Sciences, Tian Jin University, Tian Jin, China, ³ College of Pharmaceutical Engineering of Traditional Chinese Medicine, Tianjin University of Traditional Chinese Medicine, Tianjin, China

OPEN ACCESS

Edited by:

Jianlei Hao,
Jinan University, China

Reviewed by:

Haiyan Liu,
National University of Singapore,
Singapore
Yangqiu Li,
Jinan University, China
Manolo Sambucci,
Santa Lucia Foundation (IRCCS), Italy

*Correspondence:

Xi Chen
andychen0803@sina.com
Xiaoli Wu
wuxiaoli@tju.edu.cn

[†]These authors have contributed
equally to this work

Specialty section:

This article was submitted to
T Cell Biology,
a section of the journal
Frontiers in Immunology

Received: 21 October 2020

Accepted: 29 December 2020

Published: 16 February 2021

Citation:

Li Y, Li G, Zhang J, Wu X and Chen X
(2021) The Dual Roles of
Human $\gamma\delta$ T Cells: Anti-Tumor
or Tumor-Promoting.
Front. Immunol. 11:619954.
doi: 10.3389/fimmu.2020.619954

$\gamma\delta$ T cells are the unique T cell subgroup with their T cell receptors composed of γ chain and δ chain. Unlike $\alpha\beta$ T cells, $\gamma\delta$ T cells are non-MHC-restricted in recognizing tumor antigens, and therefore defined as innate immune cells. Activated $\gamma\delta$ T cells can promote the anti-tumor function of adaptive immune cells. They are considered as a bridge between adaptive immunity and innate immunity. However, several other studies have shown that $\gamma\delta$ T cells can also promote tumor progression by inhibiting anti-tumor response. Therefore, $\gamma\delta$ T cells may have both anti-tumor and tumor-promoting effects. In order to clarify this contradiction, in this review, we summarized the functions of the main subsets of human $\gamma\delta$ T cells in how they exhibit their respective anti-tumor or pro-tumor effects in cancer. Then, we reviewed recent $\gamma\delta$ T cell-based anti-tumor immunotherapy. Finally, we summarized the existing problems and prospect of this immunotherapy.

Keywords: $\gamma\delta$ T cells, tumor, human, immunity, immunotherapy

INTRODUCTION

$\gamma\delta$ T cells are the non-classical cell subgroup characterized by expression of $\gamma\delta$ heterodimeric T cell receptor (TCR $\gamma\delta$) on cell surface. They only account for 1% to 5% of T lymphocytes in peripheral blood circulation and lymphatic circulation, and predominantly reside in the mucosal tissues such as skin, intestine, lung, and uterus (1–3). $\gamma\delta$ T cells are the intermediate group of cells between innate and adaptive immune cells, serving as a bridge between innate immunity and adaptive immune response (4, 5). They play important roles in tumor immunity. Depending on the microenvironment, different $\gamma\delta$ T cell subgroups can have anti-tumor or pro-tumor activities.

Compare with $\alpha\beta$ T cells, $\gamma\delta$ T cells have different antigen recognition mechanisms and capabilities without the histocompatibility complex (MHC) and the second signal (CD28 and CD80/86) (6). They can use TCR $\gamma\delta$ and natural killer cell receptors (NKR) to recognize a variety of tumor-associated antigens (TAA), including non-peptidic prenyl-pyrophosphate antigens (PAg) and stress proteins (7). The PAg are products of isoprenoid biosynthesis pathways, such as isoprene pyrophosphate (IPP) from mammalian cells and (E)-4-Hydroxy-3-Methylbut-2-Enyl Diphosphate (HMBPP, the strongest stimulant of $\gamma\delta$ T cells) from pathogenic microorganisms (8–12). Besides,

the stress proteins will up-regulate or ectopically express under the stress conditions, such as apolipoprotein A1-F1-ATPase complex (F1-ATPase Apo A1) (13), MHC-like molecules MICA/B, UL16 Binding protein (ULBP) (14–18), endothelial cell protein C receptor (EPCR) (19, 20), heat shock protein (21–23) and human MutS homolog 2 (24–26). These antigens can activate $\gamma\delta$ T cells to secrete interferon γ (IFN- γ) and tumor necrosis factor α (TNF- α) (6), or kill tumor cells through Fas/FasL and antibody-dependent cell-mediated cytotoxicity (ADCC) (27–30). Moreover, $\gamma\delta$ T cells can also enhance the anti-tumor ability of other immune cells by secreting cytokines or expressing costimulatory molecules. For example, human $\gamma\delta$ T cells can stimulate the cytotoxicity of NK cells through expressed the costimulatory molecule CD137L (31). $\gamma\delta$ T cells have been used in clinic for the treatment of non-small cell lung cancer and breast cancer. Such $\gamma\delta$ T-based immunotherapy appeared to be safe and well-tolerated in patients (32–35).

However, it was reported that $\gamma\delta$ T cells could also promote cancer development (36). For example, as one of the main sources of interleukin-17 (IL-17), tumor-infiltrating $\gamma\delta$ T cells were shown to promote tumor development and metastasis by enhancing angiogenesis and recruiting inhibitory cells (37–40). Tumor-infiltrating $\gamma\delta$ T cells could also directly induce the apoptosis of anti-tumor immune cells (41).

In this review, we introduced the classification of human $\gamma\delta$ T cells and summarized how $\gamma\delta$ T cell subsets play different roles in tumorigenesis. We further discussed the $\gamma\delta$ T cell-based anti-tumor immunotherapy which has been widely used in clinic. Finally, we briefly summarized the current limitation and caveats associated with such therapy, and proposed new approach for optimization. We believe that the summary of biological functions of different $\gamma\delta$ T cells can help us improve our understanding of tumor microenvironment, and provide novel insights for anti-tumor immunity.

CLASSIFICATION OF $\gamma\delta$ T CELLS

Human $\gamma\delta$ T cells can be classified into different groups based on the expression of TCR γ chains or TCR δ chains, and they can be further classified by the expression of different CD molecules (42, 43).

Classification Based on the Expression of TCR γ Chain or TCR δ Chain

Different TCR γ chains (V γ 2/3/4/5/8/9) and TCR δ chains (V δ 1/2/3/5) can be combined to form different types of $\gamma\delta$ T cells. Interestingly, each TCR δ chain usually forms with one or several dominant TCR γ chains a fixed combination pattern, rather than with random combinations (44–47).

Different $\gamma\delta$ T cells have diversified distribution and functions. V δ 1 chain can interact with different γ chains to form various $\gamma\delta$ T cells. They are mainly distributed in the skin, intestine, liver, spleen and mucosal tissues. The role of V δ 1 T cells is controversial. In certain situations, they have been shown to have strong anti-tumor effects in colorectal cancer,

multiple myeloma, chronic lymphocytic leukemia (48–50). On the other hand, tumor-infiltrating V δ 1 T cells often demonstrate strong immunosuppressive effects. They secreted IL-17 and transforming growth factor- β (TGF- β) (51), expressed programmed cell death 1 ligand 1 (PD-L1), and inhibited the activation of other immune cells (41).

The V δ 2 chain only combines with the V γ 9 chain to form the V γ 9V δ 2 T cells, which mainly exist in peripheral blood. Given that the V γ 9V δ 2 T cells have strong anti-tumor effects in various types of tumors, they were widely used in clinics (52–55). In addition, they have also been shown to kill the cancer stem cells (CSC) in various tumors including colon cancer, ovarian cancer, and neuroblastoma (56, 57).

The V δ 3 chain mainly interacts with the V γ 2 and V γ 3 chains. V δ 3 T cells mainly exist in the liver, and also in a small amount in the peripheral blood of patients with chronic lymphocytic leukemia. The functions of V δ 3 T cells in tumors have not been elucidated in depth (58–61).

The V δ 5 chain usually combines with the V γ 4 chain to form the V γ 4V δ 5 T cells. They mainly exist in peripheral blood. The TCR of V γ 4V δ 5 T cells could directly bind to the endothelial protein C receptor (EPCR) to recognize epithelial tumor cells. Like V δ 3 T cells, they were rarely studied for their tumor-related functions (19, 62) (Table 1).

Classifications Based on the Phenotype of CD Molecules

Human $\gamma\delta$ T cells can be classified based on the expression of CD27 and CD45RA. The naive type (T_{naive} , CD27⁺CD45RA⁺) and the central-memory phenotype (T_{CM} , CD27⁺CD45RA⁻), mainly exist in the secondary lymphoid organs. T_{CM} can maintain immune memory for a long time and quickly mediate immune response after receiving antigen stimulation. The effector-memory type (T_{EM} , CD27⁻CD45RA⁻) and terminally-differentiated type (T_{EMRA} , CD27⁻CD45RA⁺) mainly exist at the site of inflammation and exert instant effects, namely secreting cytokines and exerting cytotoxicity (63, 64).

Classification of $\gamma\delta$ T Cells According to Their Cellular Function

Based on their varied functions, $\gamma\delta$ T cells can be divided into several subtypes. Similar to $\alpha\beta$ T cells, effector $\gamma\delta$ T cells can exert an anti-tumor effect through various pathways. Regulatory $\gamma\delta$ T cells (CD4⁺CD25⁺Foxp3⁺) or inhibitory $\gamma\delta$ T cells can regulate the immune balance and maintain immune tolerance (17, 51). In addition, $\gamma\delta$ T17 cells can produce IL-17 to promote tumor development (6, 36, 41).

TABLE 1 | Subsets of human $\gamma\delta$ T cells.

Subset	Paired TCR γ chains	Cellular localization
V δ 1	V γ 2, V γ 3, V γ 4, V γ 5, V γ 8 and V γ 9	Skin, intestine, liver, spleen and mucosal tissues
V δ 2	V γ 9	Peripheral blood
V δ 3	V γ 2, V γ 3	Liver and peripheral blood
V δ 5	V γ 4	Peripheral blood

$\gamma\delta$ T CELLS PLAY A DIRECT ANTI-TUMOR ROLE

The Tumor-Associated Antigens Recognition by $\gamma\delta$ T Cells

V γ 9V δ 2 T cells recognizes TAA through TCR $\gamma\delta$ and NKR and V γ 9V δ 2TCR can recognize PAg. This type of antigen was a product of isoprenoid biosynthesis pathway in eukaryotic cells, such as IPP and the adenylated, thymidylated, and uridylated triphosphate derivatives. In tumor cells, the isoprenoid biosynthetic pathway is enhanced to ensure energy supply and PAg accumulation, prompting recognition by the V γ 9V δ 2 T cells (65–68). V γ 9V δ 2TCR requires the help of Butyrophilin (BTN) 3A1 to recognize tumor cells. BTN3A1 is an immunoglobulin-like molecule with immunomodulatory function, which could mediate the interaction between $\gamma\delta$ T cells and PAg, and could also be directly recognized by V γ 9V δ 2TCR (69–71). There were two theories on how BTN3A1 helps V γ 9V δ 2TCR recognize PAg. The first proposed mechanism was that BTN3A1 is a sensor that senses the level of PAg inside the cell. The intracellular B30.2 domain of the BTN3A1 molecule is a positively charged pocket that could directly bind to PAg, lead to changes in the structure of the extracellular dimer of BTN3A1 that can be recognized by V γ 9V δ 2TCR, and then activate the $\gamma\delta$ T cells (72–77). The second proposed mechanism was that BTN3A1 formed a BTN3A1-PAg complex with PAg, presented PAg to the outside of the cell, and directly bound to V γ 9V δ 2TCR to activate $\gamma\delta$ T cells (78). The latest study found that BTN2A1, which was in the same family as BTN3A1, was also a ligand for V γ 9V δ 2TCR and necessary for V γ 9V δ 2 T cells to recognize PAg. BTN2A1 and BTN3A1 can be found on the surface of tumor cells and recognized by two sites of V γ 9V δ 2TCR. BTN2A1 is recognized by the V γ 9 area, and BTN3A1 is recognized by the V δ 2 area (79, 80). In addition, V γ 9V δ 2TCR could recognize the F1-ATPaseApoA1 complex. This complex are normally expressed in the inner membrane of mitochondria, but some tumor cells, such as human leukemia (K562) cells and lymphoma (Raji) cells, could ectopic express it on the cell membrane. ApoA1 in the complex could not directly activate V γ 9V δ 2 T cells, instead it plays a function in stabilizing the interaction between V γ 9V δ 2TCR and F1-ATPase (13, 81).

V γ 9V δ 2 T cells could also recognize TAA through NKR, such as the natural killer 2D receptor (NKG2D) and DNAX accessory molecule 1 (DNAM-1). NKG2D is a lectin-type activation receptor, expressed on most natural killer cells (NK) and natural killer T (NKT) cells and partly expressed on $\gamma\delta$ T cells and antigen-activated CD8⁺ T cells (82). When $\gamma\delta$ T cells contacted by the tumor cells, V γ 9⁺ subpopulations rapidly proliferated, and $\gamma\delta$ T cells up-regulated their NKG2D expression (83). NKG2D ligands on tumor cells include MICA, MICB and ULBP1~4 (84, 85). They could be recognized by NKG2D and enable $\gamma\delta$ T cells to exert anti-tumor function (82). DNAM-1 is expressed on the $\gamma\delta$ T cells and believed to promote the secretion of cytokines and enhance the cytotoxicity of immune cells. V γ 9V δ 2 T cells used DNAM-1 to recognize Nectin-2 and PVR, which were widely expressed on the tumor cells (86–88). Shielding DNAM-1 from the surface of $\gamma\delta$ T cells could significantly inhibit its ability to kill tumor cells (89). It

was shown that DNAM-1 is one of the important factors mediating $\gamma\delta$ T cells to recognize tumor cells.

V δ 1 T cells also recognize tumor cells through TCR $\gamma\delta$ and NKR. V δ 1TCR could recognize MHC-like molecule CD1d and the lipid antigen presented by it (90, 91). CD1d is expressed on a variety of cancers, such as myeloma, breast cancer and prostate cancer (92–94). The decrease of CD1d molecules on the primitive neuroectodermal tumor cells would cause these cells to evade immune recognition (95). In addition, V δ 1TCR could recognize tumor cells through MICA, but the MICA bindings by V δ 1TCR and NKG2D were mutually exclusive (96). V δ 1 T cells also express NKR. These cells recognize ULBP3 which is expressed on chronic lymphocytic leukemia of B-cell type (B-CLL) through NKR (97). They recognize human breast cancer cells through NKG2D, significantly preventing the disease progression (35). In addition to NKG2D and DNAM-1, V δ 1 T cells stimulated by IL-2 or IL-15 also express NKp30, NKp44 and NKp46 (48, 98), and have strong IFN- γ secretion ability (99, 100). Moreover, it has been confirmed that in acute myeloid leukemia, the ligand of NKp30 is B7-H6, a member of the B7 family (101).

Other studies have also confirmed that V γ 4V δ 5TCR can recognize EPCR, which is expressed on the epithelial tumor cells (19, 20) (**Figure 1**).

Anti-Tumor Mechanism of $\gamma\delta$ T Cells

First, $\gamma\delta$ T cells could kill tumor cells directly through secreting perforin and granzyme B (82). $\gamma\delta$ T cells recognize tumor cells and release perforin and granzyme B into the synaptic space. They could further activate caspases to break DNA of tumor cells and lead to tumor cell death (102–105). $\gamma\delta$ T cells could kill the human squamous cell carcinoma through perforin and granzyme B (106). Perforin and granzyme B inhibitor significantly reduce the ability of V γ 9V δ 2 T cells to lyse breast cancer cells *in vitro* (107). Moreover, in patients with renal carcinoma, activated V γ 9V δ 2 T cells showed a strong cytotoxicity to autologous tumor cells through perforin and granzyme B (108).

Second, $\gamma\delta$ T cells kill tumor cells through ADCC. The Fab and Fc segment of antibody could bind to the TAA and $\gamma\delta$ T cells, respectively. Then $\gamma\delta$ T cells are activated to kill the tumor cells. Upon interaction with tumor cells, the expression of CD16 (Fc γ RIIIA) could be up-regulated on $\gamma\delta$ T cells to induce tumor death through ADCC (82, 109, 110). In chronic lymphocytic leukemia and breast cancer patients, the cytotoxicity of V γ 9V δ 2 T cells is significantly enhanced after treatment with monoclonal antibodies including rituximab, trastuzumab and alemtuzumab (111–113).

Third, $\gamma\delta$ T cells kill tumors through the Fas/FasL pathway and TRAIL (106). FasL expressed on $\gamma\delta$ T cells could bind to Fas, and formed Fas trimer, which lead to the binding of the death effector domain (DED) to Fas-associated death domain-containing protein (FADD), and then activate caspases to induced the apoptosis of target cells (114–116). Similar to Fas/FasL, TRAIL also activates caspases through FADD, and then leads to apoptosis of tumor cells (117–124). In addition, IFN- γ could enhance the cytotoxicity of $\gamma\delta$ T cells by up-regulating the expression of Fas on osteosarcoma cells (125, 126).

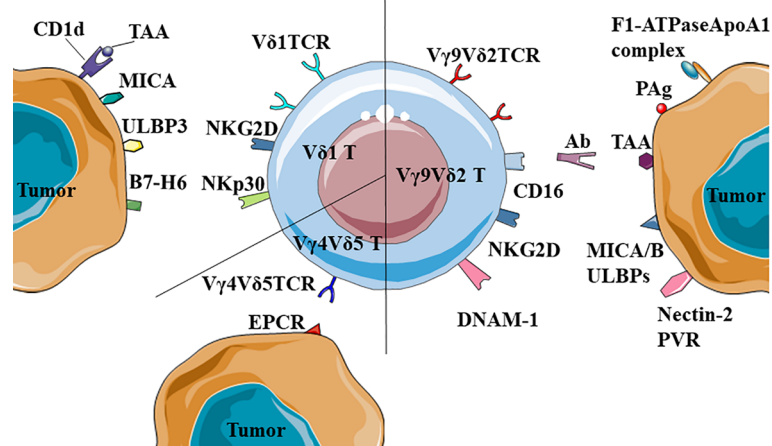


FIGURE 1 | Recognition of tumor-associated antigens (TAA) by different $\gamma\delta$ T cells. V δ 1TCR could recognize MICA or the complexes of CD1d and TAA; NKR+ (NKG2D and NKp30) V δ 1 T cells could recognize ULBP3 and B7-H6. Besides, V γ 9V δ 2 T cells could also recognize and kill tumors by CD16-mediated antibody-dependent cell-mediated cytotoxicity (ADCC). Notably, V γ 4V δ 5TCR could recognize the antigen of epithelial tumor cells, EPCR.

Similar to V γ 9V δ 2 T cells, V δ 1 T cells could kill tumor cells through the perforin-granzyme B, Fas/FasL and TRAIL pathway (49, 50, 98, 101). For example, human skin V δ 1 T cells could secrete perforin to kill melanoma cells (127). Granzyme B⁺ V δ 1 T cells and TRAIL⁺ V δ 1 T cells showed strong cytotoxicity to lymphoma cells and chronic lymphocytic leukemia (128–130). Beyond that, *ex vivo* expanded V δ 1 T cells highly express FasL, and have strong cytotoxicity on colon cancer cells (131).

$\gamma\delta$ T CELLS ENHANCE THE ANTI-TUMOR ABILITY OF OTHER IMMUNE CELLS

$\gamma\delta$ T cells share similar functions as antigen presenting cells (APC), which could activate CD8⁺T cells (132, 133). When co-cultured with chronic myeloid leukemia (CML) cell lysates, the expression of co-stimulatory molecules (CD40, CD80 and CD86) and antigen-presenting molecule HLA-DR on V γ 9V δ 2 T cells could be strongly up-regulated. When these $\gamma\delta$ T cells were co-cultured with CD8⁺ T cells, the proliferation rate of CD8⁺ T cells became 3 times faster than that of the control group (134, 135). Tumor cell fragments activate MAPK signaling pathways through V γ 9V δ 2TCR, up-regulate the expression of scavenger receptor CD36, enhance antigen uptake and processing of V γ 9V δ 2 T cells, and then induced tumor antigen-specific CD8⁺T cell response (136). Furthermore, $\gamma\delta$ T cells toned to interact with cell surface-bound antibodies to acquire the ability of APC (137).

In addition, activated $\gamma\delta$ T cells could secrete IFN- γ , which stimulates CSC to up-regulate the expression of MHC I molecules and CD54, and enhance the killing effect of CD8⁺T cells on tumor cells (138). Activated $\gamma\delta$ T cells could also express CD137L to stimulate NK cells that upon proliferation exhibit strong anti-tumor activity through cell-to-cell contact (31).

The interaction between $\gamma\delta$ T cells and dendritic cells (DC) is mutual. $\gamma\delta$ T cells promote the maturation of DC, and mature DC induces the activation and proliferation of $\gamma\delta$ T cells, which yield enhanced anti-tumor effect (139, 140). For example, activated V γ 9V δ 2 T cells could secrete IFN- γ and TNF- α to promote DC maturation and increase the expression of CD86 and MHC-I molecules on DC (141, 142). Mature DC could activate $\gamma\delta$ T cells through presenting IPP, which synergizes with ATP-binding cassette transporter A1 (ABCA1), ApoA1 and BTN3A1 (143) (Figure 2).

TUMOR-INFILTRATING $\gamma\delta$ T CELLS PROMOTE TUMOR DEVELOPMENT BY SECRETING IL-17

Interestingly, patients with increased number of tumor-infiltrating $\gamma\delta$ T cells have higher recurrence rates and likelihood of metastasis (144–146). Among the tumor-infiltrating $\gamma\delta$ T cells, V δ 1 T cells are present as the main population and secrete IL-17 to promote tumor development. IL-17 can promote the proliferation of tumor cells by activating IL-6/STAT3 and NF- κ B pathways. In addition, it can also stimulate tumor cells to secrete vascular endothelial growth factor (VEGF) and matrix metalloproteinases (MMP) to further help tumor metastasis. High levels of IL-17 have been found in patients with advanced tumor or metastasized tumors (64, 147, 148). For example, in patients with solid tumors, V δ 1 T cells account for a large proportion of tumor-infiltrating $\gamma\delta$ T cells; unlike V δ 1 T cells in adjacent non-tumor tissues, tumor-infiltrating $\gamma\delta$ T cells do not express granzyme B, perforin, IFN- γ , FasL, TRAIL and NKR, but secrete IL-17 (149–154). Majority of the tumor-infiltrating V δ 1 T cells were T_{EM} phenotype, while most of the V δ 1 T cells in healthy subjects were T_{CM} phenotype

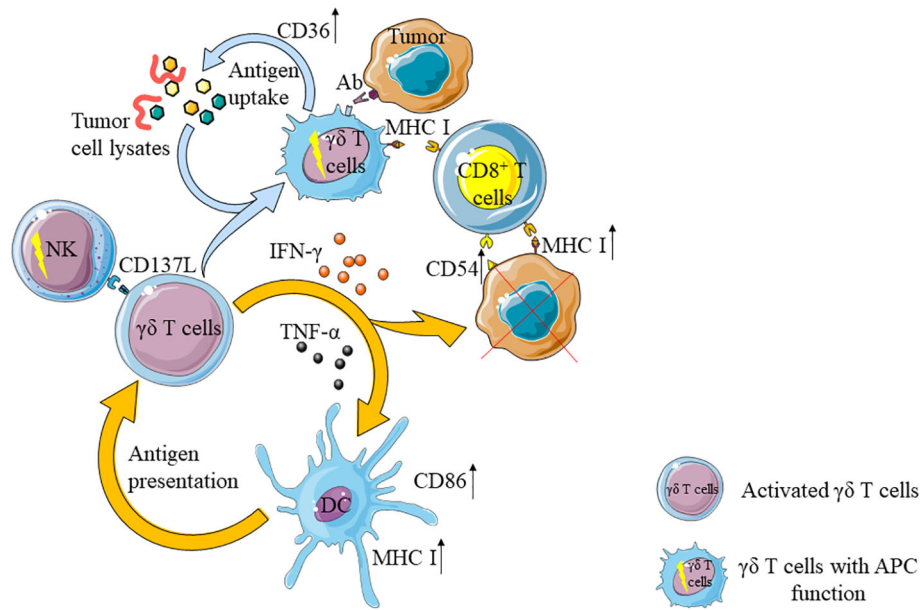


FIGURE 2 | $\gamma\delta$ T cells enhance the anti-tumor ability of other immune cells. On the one hand, activated $\gamma\delta$ T cells can activate natural killer cells (NK) and dendritic cells (DC), activated DC can further activate $\gamma\delta$ T cells. On the other hand, activated $\gamma\delta$ T cells can up-regulate the expression of CD36 and enhance their antigen uptake ability after uptake of tumor cell lysates. At the same time, through contact with tumor cells with antibodies, the ability of antigen-presenting cells (APC) is obtained and CD8⁺T cells are activated. In addition, IFN- γ secreted by $\gamma\delta$ T cells can up-regulate the expression of CD54 and MHC I molecules in tumor cells, and further enhance the anti-tumor effect of CD8⁺T cells.

(64). Similarly and compared with healthy people, cancer patients have a larger proportion of V δ 1 T cells and higher IL-17 levels in their peripheral blood (155, 156).

TUMOR-INFILTRATING $\gamma\delta$ T CELLS INHIBIT THE ANTI-TUMOR FUNCTION OF OTHER IMMUNE CELLS

IL-17, secreted by tumor-infiltrating V δ 1 T cells not only acts on tumor cells directly, but can also recruit myeloid-derived suppressor cells (MDSC) to tumor (147, 148, 150). MDSC inhibits the activation of CD8⁺ T cells by expressing high levels of ARG1, which decomposes arginine in the tumor microenvironment (157–160).

In addition, tumor-infiltrating $\gamma\delta$ T cells could significantly inhibit the maturation of CD4⁺ T cells (155). Studies in breast cancer settings showed that tumor-infiltrating $\gamma\delta$ T cells could inhibit the maturation of CD4⁺ or CD8⁺ T cells and change their functions by arresting cell cycle in G0/G1 phase and increasing the expression of p53, P21, and P16. Through secreting IL-10 and TGF- β 1, these suppressed T cells further amplified the inhibitory effect (161, 162). Beyond that, these cells express high levels of PD-L1 to promote the apoptosis of CD8⁺ T cells in cancer patients (41).

V δ 1 T cells could also inhibit the maturation of DC, reduce the expression of CD80/86 and HLA-DR on DC, attenuate the secretion of pro-inflammatory cytokines TNF- α , and up-

regulate the expression of PD-L1 on the surface of DC (161, 163) (Figure 3).

ANTI-TUMOR IMMUNOTHERAPY WITH $\gamma\delta$ T CELLS

The unique antigen recognition mechanism of $\gamma\delta$ T cells renders them the ability to kill various types of tumors. Therefore, $\gamma\delta$ T cell-based therapies have been widely used in clinical as anti-tumor immunotherapies and achieved good results (Table 2). At present, the most routine method in these therapies is to activate the anti-tumor activity of natural $\gamma\delta$ T cells and the V γ 9V δ 2 T cells, which as the most abundant subtype in peripheral blood are often selected and utilized through transferring back to cancer patient after stimulation *in vitro* or direct activation *in vivo*.

The most widely used stimulants for expanding V γ 9V δ 2 T cells *in vitro* are zoledronic acid (ZOL) and IL-2. As a kind of bisphosphate, ZOL could specifically inhibit farnesyl pyrophosphate synthase (FPPS) in isoprene biosynthesis pathway, thus causing the accumulation of endogenous PA γ in cells and promoting the activation of V γ 9V δ 2 T cells (65). This method could effectively expand and activate V γ 9V δ 2 T cells from patients or healthy people *in vitro* (52). In addition, another kind of PA γ , 2-methyl-3-butenyl-1-pyrophosphate(2M3B1-PP) could also effectively stimulate and expand V γ 9V δ 2 T cells (164, 165). The activated immune cells are transferred back into the patients to produce anti-tumor effects. In order to track the activated V γ 9V δ 2

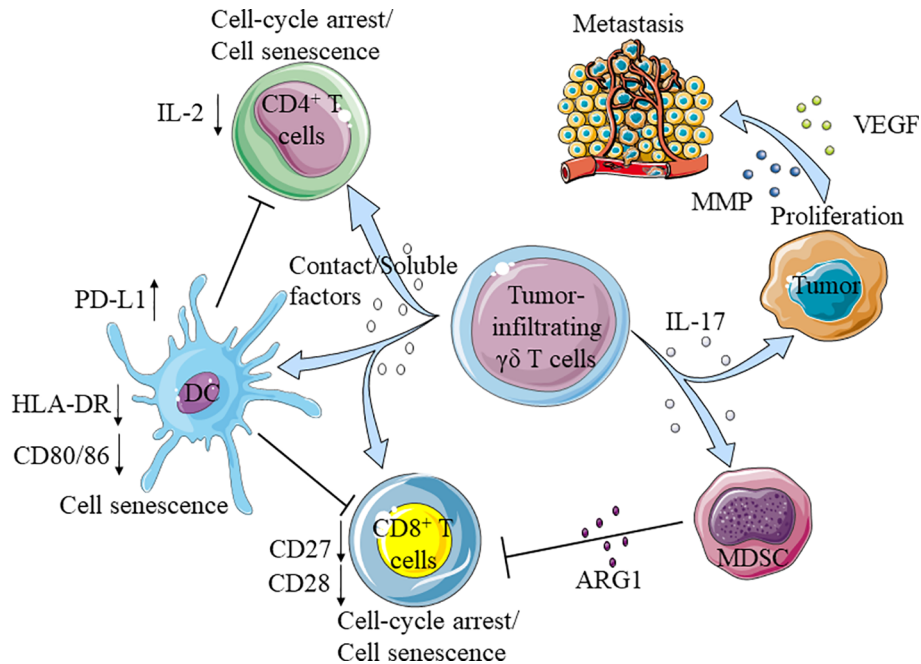


FIGURE 3 | Tumor-infiltrating $\gamma\delta$ T cells promote the development of tumor. Tumor-infiltrating $\gamma\delta$ T cells secrete IL-17 promote the proliferation and metastasis of tumor cells, and recruit myeloid-derived suppressor cells (MDSC) to inhibit the function of CD8⁺T cells. Moreover, tumor-infiltrating $\gamma\delta$ T cells directly impaired the function of CD4⁺/CD8⁺T cells and dendritic cells (DC), the aging DC further inhibited CD4⁺/CD8⁺T cells.

TABLE 2 | Clinical trials of $\gamma\delta$ T cell-based immunotherapy.

Cell types	Cell source	Stimulation method	Disease	Number of patients	Phase	Ref.
V γ 9V δ 2 T	Peripheral blood of healthy people	ZOL+ a variety of interleukins (Patent pending)	Cholangio-carcinoma	1	IV	(52)
V γ 9V δ 2 T	Peripheral blood	ZM3B1PP+IL-2	Advanced renal cell carcinoma	7	Pilot study	(164)
V γ 9V δ 2 T	Peripheral blood	2M3B1PP+ZOL+IL-2	Advanced renal cell carcinoma	11	I/II	(165)
V γ 9V δ 2 T	Peripheral blood	ZOL+IL-2	Several solid tumors	18	I	(166)
V γ 9V δ 2 T	Peripheral blood	ZOL+IL-2	Multiple myeloma	6	I	(167)
V γ 9V δ 2 T	Peripheral blood	IPH1101+IL-2	Metastatic renal cell carcinoma	10	I	(168)
V γ 9V δ 2 T	Peripheral blood	ZOL+IL-2	Recurrent non-small-cell lung cancer	10	I	(169)
V γ 9V δ 2 T	Peripheral blood	ZOL+IL-2	Advanced non-small lung cancer	15	I	(170)
V γ 9V δ 2 T	Peripheral blood	ZOL+IL-2	Malignant ascites (gastic cancer)	7	Pilot study	(171)
V γ 9V δ 2 T	Peripheral blood	ZOL+IL-2	Refractory renal cell carcinoma	12	Pilot study	(172)
		Injection ZOL+IL-2	Neuroblastoma	4	I	(173)
		Injection ZOL+IL-2	Several advanced tumors	21	I/II	(174)
		Injection ZOL+IL-2	Lymphoid malignacies	19	Pilot study	(175)
		Injection IPH 1101+IL-2	Several solid tumors	28	I	(176)

T cells, they are typically labeled with indium¹¹¹. Studies have confirmed that these cells mainly metastasize to the lung, liver and spleen, as well as to the tumor sites (166). In the treatment of patients with multiple myeloma, the stimulated V γ 9V δ 2 T cells expressed high levels of NKG2D and IFN- γ , but not IL-17. After treatment, the number of V γ 9V δ 2 T cells in the tumor

microenvironment increased, lasting as long as 4 weeks (167). In patients with renal cell carcinoma and non-small cell lung cancer, repeated injections of IL-2 has demonstrated good safety (168), enhanced the cytotoxicity of V γ 9V δ 2 T cells. As results, the deterioration of tumor was alleviated with patients' condition stabilized, and the survival time was pro-longed (164, 165, 169,

170). In the clinical study of malignant ascites, after transferring back the activated V γ 9V δ 2 T cells, the number of tumor cells in ascites decreased significantly and the level of IFN- γ in ascites increased. During the course of treatment, there were no significant adverse effects and the amounts of ascites decreased significantly (171). In addition to the direct anti-tumor effect of V γ 9V δ 2 T cells, the numbers of CD4⁺ T and CD8⁺ T cells could also get increased after the allogeneic V γ 9V δ 2 T cells were transferred into the patients, as shown in another study of cholangio-carcinoma (52).

V γ 9V δ 2 T cells could also be activated *in vivo*. Injection of ZOL and IL-2 could directly activate these cells in cancer patients. Several clinical trials have demonstrated that, upon injection and activation of V γ 9V δ 2 T cells *in vivo*, IFN- γ was strongly induced and the deterioration of the tumor was controlled (53, 172–175). Besides ZOL, V γ 9V δ 2 T cells could also be activated by synthetic PAG or bromohydrin pyrophosphate (BrHPP, IPH1101) with good safety tolerability in patients (176).

OPTIMIZATION OF $\gamma\delta$ T CELL-BASED IMMUNOTHERAPY

In clinic, repeated use of ZOL and IL-2 carry the liability in inhibiting the proliferation of V γ 9V δ 2 T cells (172), which could be alleviated by vitamin C (VC) and L-ascorbic acid 2-phosphate (pVC). VC has the ability to reduce the apoptosis of $\gamma\delta$ T cells during stimulation, and pVC may enhance the expansion of $\gamma\delta$ T cells. Therefore, VC and pVC have been utilized to improve the efficacy of the $\gamma\delta$ T cells in anti-tumor immunotherapy (177). In addition, cytotoxicity of V γ 9V δ 2 T cells could be improved by adding IL-21, IL-15, or IL-33 *in vitro* (55, 178–182). Anti-cancer drug Gemcitabine or anti-epileptic drug Valproic acid (VPA) in combination with ZOL could also enhance the anti-tumor ability of $\gamma\delta$ T cells (183, 184).

In recent years, chitosan nanoparticles (CSNPs) and antibodies have been developed as potential anti-tumor therapies. CSNPs have been shown to regulate $\gamma\delta$ T cells by up-regulating the expression of NKG2D, CD56 and FasL, and enhancing their anti-tumor functions (185). TIM-3 could also inhibit the killing effect of V γ 9V δ 2 T cells on tumor by reducing the expression of perforin and granzyme B. PD-1 and TIM-3 antibodies could protect anti-tumor activity of V γ 9V δ 2 T cells (186–188). Beyond these, the application of bispecific antibodies can also promote $\gamma\delta$ T cells to inhibit tumor development. For example, in the study of hepatoblastoma and pediatric hepatocellular carcinoma, the application of EpCAM/CD3-bispecific BiTE antibody (MT110) enhanced the anti-tumor ability of $\gamma\delta$ T cells; similarly, in epithelial ovarian cancer and pancreatic ductal adenocarcinoma, bispecific antibody [HER2xCD3] and [(HER2)2xV γ 9] (tribody format) could also effectively enhance the cytotoxicity of $\gamma\delta$ T cells (189–193).

Finally, chimeric antigen receptor engineered $\gamma\delta$ T (CAR- $\gamma\delta$ T) technology is another new direction in immunotherapy. CAR- $\gamma\delta$ T cells could target GD2, a TAA on the surface of neuroblastoma cells, and effectively kill tumors. This kind of CAR- $\gamma\delta$ T cells need to recognize GD2 to become activated. Such mechanism ensures the specificity of these cells in killing tumor cells and offering lower

toxicities and side effects (194, 195). On the hand, V γ 9V δ 2TCR could also be transduced into $\alpha\beta$ T cells. These CAR-T cells are called TEGs, which carry not only the extensive recognition ability of $\gamma\delta$ T cells but also and the memory ability of $\alpha\beta$ T cells (196–199).

SUMMARY

Taken together, we described in this review that V δ 1 T cells and V γ 9V δ 2 T cells are the two most important subgroups of human $\gamma\delta$ T cells. Peripheral V δ 1 T cells and V γ 9V δ 2 T cells could recognize tumor cells through TCR $\gamma\delta$ and NKR, and kill them through perforin-granzyme B, Fas/FasL and TRAIL. Activated V γ 9V δ 2 T cells could perform the function of APC, and furthermore, they could activate NK cells and DC directly. On the contrary, tumor-infiltrating V δ 1 T cells promoted tumor development by secreting IL-17 and inhibiting the maturation of CD4⁺/CD8⁺ T cells and DC. In immunotherapy, ZOL, 2M3B1-PP or IPH1101 has been commonly used to activate V γ 9V δ 2 T cells to achieve anti-tumor effect. The failure caused by repeated application of this method can be solved by adding VC or replacing cytokines. In addition, new classes of drugs such as CSNPs, were also applied to $\gamma\delta$ T cell-based anti-tumor immunotherapy.

It is noteworthy to mention that although V δ 1 T cells account for the majority of tumor-infiltrating $\gamma\delta$ T cells, the definition of $\gamma\delta$ T cell subsets still rely on their profile in cytokine production (32, 64, 149). Secondly, the interaction mechanism between $\gamma\delta$ T cells and the environment or other immune cells remains to be further elucidated. For example, V γ 9V δ 2 T cells could ingest LDL-cholesterol upon activation and lead to reduced function, suggesting that obesity may inhibit the anti-tumor activity of $\gamma\delta$ T cells (200). Another myth exists in how exactly soluble molecules mediate the inhibition of $\gamma\delta$ T cells in tumor microenvironment (161, 163). In addition, $\gamma\delta$ T cell-based immunotherapy needs to be further optimized, with emphasis on how to carry out personalized therapy according to the actual situation of individual patient.

In summary, a more comprehensive understanding of the biological characteristics of $\gamma\delta$ T cells, an important group of lymphocytes, will guide the improvement of their clinical application methods and provide new strategies to fight against human cancers.

AUTHOR CONTRIBUTIONS

JZ completed the writing of the classification of $\gamma\delta$ T cells. XC and XW completed the writing of introduction and summary. YL and GL completed the writing of the rest of this review. All authors contributed to the article and approved the submitted version.

FUNDING

Funding support from China Postdoctoral Science Foundation (2018M641666).

REFERENCES

- Carding SR, Egan PJ. Gammadelta T cells: functional plasticity and heterogeneity. *Nat Rev Immunol* (2002) 2(5):336–45. doi: 10.1038/nri797
- Chien YH, Meyer C, Bonneville M. $\gamma\delta$ T cells: first line of defense and beyond. *Annu Rev Immunol* (2014) 32:121–55. doi: 10.1146/annurev-immunol-032713-120216
- Poggi A, Zocchi MR. $\gamma\delta$ T Lymphocytes as a First Line of Immune Defense: Old and New Ways of Antigen Recognition and Implications for Cancer Immunotherapy. *Front Immunol* (2014) 5:575. doi: 10.3389/fimmu.2014.00575
- Holtmeier W, Kabelitz D. gammadelta T cells link innate and adaptive immune responses. *Chem Immunol Allergy* (2005) 86:151–83. doi: 10.1159/000086659
- Bonneville M, O'Brien RL, Born WK. Gammadelta T cell effector functions: a blend of innate programming and acquired plasticity. *Nat Rev Immunol* (2010) 10(7):467–78. doi: 10.1038/nri2781
- Chitadze G, Oberg HH, Wesch D, Kabelitz D. The Ambiguous Role of $\gamma\delta$ T Lymphocytes in Antitumor Immunity. *Trends Immunol* (2017) 38(9):668–78. doi: 10.1016/j.it.2017.06.004
- Correia DV, Lopes A, Silva-Santos B. Tumor cell recognition by $\gamma\delta$ T lymphocytes: T-cell receptor vs. NK-cell receptors. *Oncoimmunology* (2013) 2(1):e22892. doi: 10.4161/onci.22892
- Sanders JM, Ghosh S, Chan JM, Meints G, Wang H, Raker AM, et al. Quantitative structure-activity relationships for gammadelta T cell activation by bisphosphonates. *J Med Chem* (2004) 47(2):375–84. doi: 10.1021/jm0303709
- Wei H, Huang D, Lai X, Chen M, Zhong W, Wang R, et al. Definition of APC presentation of phosphoantigen (E)-4-hydroxy-3-methyl-but-2-enyl pyrophosphate to Vgamma2Vdelta 2 TCR. *J Immunol* (2008) 181(7):4798–806. doi: 10.4049/jimmunol.181.7.4798
- Wang H, Sarikonda G, Puan KJ, Tanaka Y, Feng J, Giner JL, et al. Indirect stimulation of human V γ 2V δ 2 T cells through alterations in isoprenoid metabolism. *J Immunol* (2011) 187(10):5099–113. doi: 10.4049/jimmunol.1002697
- Puan KJ, Jin C, Wang H, Sarikonda G, Raker AM, Lee HK, et al. Preferential recognition of a microbial metabolite by human Vgamma2Vdelta2 T cells. *Int Immunol* (2007) 19(5):657–73. doi: 10.1093/intimm/dxm031
- Kondo M, Izumi T, Fujieda N, Kondo A, Morishita T, Matsushita H, et al. Expansion of human peripheral blood $\gamma\delta$ T cells using zoledronate. *J Vis Exp* (2011) 55:3182. doi: 10.3791/3182
- Scotet E, Martinez LO, Grant E, Barbaras R, Jenö P, Guiraud M, et al. Tumor recognition following Vgamma9Vdelta2 T cell receptor interactions with a surface F1-ATPase-related structure and apolipoprotein A-I. *Immunity* (2005) 22(1):71–80. doi: 10.1016/j.immuni.2004.11.012
- Kong Y, Cao W, Xi X, Ma C, Cui L, He W. The NKG2D ligand ULBP4 binds to TCRgamma9/delta2 and induces cytotoxicity to tumor cells through both TCRgamma/delta and NKG2D. *Blood* (2009) 114(2):310–7. doi: 10.1182/blood-2008-12-196287
- Peipp M, Wesch D, Oberg HH, Lutz S, Muskulus A, van de Winkel JGJ, et al. CD20-Specific Immunoligands Engaging NKG2D Enhance $\gamma\delta$ T Cell-Mediated Lysis of Lymphoma Cells. *Scand J Immunol* (2017) 86(4):196–206. doi: 10.1111/sji.12581
- Gundermann S, Klinker E, Kimmel B, Flierl U, Wilhelm M, Einsele H, et al. A comprehensive analysis of primary acute myeloid leukemia identifies biomarkers predicting susceptibility to human allogeneic V γ 9V δ 2 T cells. *J Immunother* (2014) 37(6):321–30. doi: 10.1097/CJI.0000000000000043
- Lu J, Aggarwal R, Kanji S, Das M, Joseph M, Pompili V, et al. Human ovarian tumor cells escape $\gamma\delta$ T cell recognition partly by down regulating surface expression of MICA and limiting cell cycle related molecules. *PLoS One* (2011) 6(9):e23348. doi: 10.1371/journal.pone.0023348
- Knight A, Arnouk H, Britt W, Gillespie GY, Cloud GA, Harkins L, et al. CMV-independent lysis of glioblastoma by ex vivo expanded/activated V δ 1+ $\gamma\delta$ T cells. *PLoS One* (2013) 8(8):e68729. doi: 10.1371/journal.pone.0068729
- Willcox CR, Pitard V, Netzer S, Couzi L, Salim M, Silberzahn T, et al. Cytomegalovirus and tumor stress surveillance by binding of a human $\gamma\delta$ T cell antigen receptor to endothelial protein C receptor. *Nat Immunol* (2012) 13(9):872–9. doi: 10.1038/ni.2394
- Witherden DA, Havran WL. EPCR: a stress trigger for $\gamma\delta$ T cells. *Nat Immunol* (2012) 13(9):812–4. doi: 10.1038/ni.2398
- Zhang H, Hu H, Jiang X, He H, Cui L, He W. Membrane HSP70: the molecule triggering gammadelta T cells in the early stage of tumorigenesis. *Immunity Invest* (2005) 34(4):453–68. doi: 10.1080/08820130500265349
- Thomas ML, Samant UC, Deshpande RK, Chiplunkar SV. gammadelta T cells lyse autologous and allogenic oesophageal tumours: involvement of heat-shock proteins in the tumour cell lysis. *Cancer Immunol Immunother* (2000) 48(11):653–9. doi: 10.1007/s002620050014
- Laad AD, Thomas ML, Fakhri AR, Chiplunkar SV. Human gamma delta T cells recognize heat shock protein-60 on oral tumor cells. *Int J Cancer* (1999) 80(5):709–14. doi: 10.1002/(sici)1097-0215(19990301)80:5<709::aid-ijc14>3.0.co;2-r
- Mo C, Dai Y, Kang N, Cui L, He W. Ectopic expression of human MutS homologue 2 on renal carcinoma cells is induced by oxidative stress with interleukin-18 promotion via p38 mitogen-activated protein kinase (MAPK) and c-Jun N-terminal kinase (JNK) signaling pathways. *J Biol Chem* (2012) 287(23):19242–54. doi: 10.1074/jbc.M112.349936
- Dai Y, Chen H, Mo C, Cui L, He W. Ectopically expressed human tumor biomarker MutS homologue 2 is a novel endogenous ligand that is recognized by human $\gamma\delta$ T cells to induce innate anti-tumor/virus immunity. *J Biol Chem* (2012) 287(20):16812–9. doi: 10.1074/jbc.M111.327650
- Chen H, He X, Wang Z, Wu D, Zhang H, Xu C, et al. Identification of human T cell receptor gammadelta-recognized epitopes/proteins via CDR3delta peptide-based immunobiochemical strategy. *J Biol Chem* (2008) 283(18):12528–37. doi: 10.1074/jbc.M708067200
- Meraviglia S, Caccamo N, Guggino G, Tolomeo M, Siragusa S, Stassi G, et al. Optimizing tumor-reactive $\gamma\delta$ T cells for antibody-based cancer immunotherapy. *Curr Mol Med* (2010) 10(8):719–26. doi: 10.2174/156652410793384150
- Hoeres T, Smetak M, Pretscher D, Wilhelm M. Improving the Efficiency of V γ 9V δ 2 T-Cell Immunotherapy in Cancer. *Front Immunol* (2018) 9:800. doi: 10.3389/fimmu.2018.00800
- Chen J, Fan Y, Cui B, Li X, Yu Y, Du Y, et al. HMG2: An Antitumor Effector Molecule of $\gamma\delta$ T Cells. *J Immunother* (2018) 41(3):118–24. doi: 10.1097/CJI.0000000000000211
- Iovino F, Meraviglia S, Spina M, Orlando V, Saladino V, Dieli F, et al. Immunotherapy targeting colon cancer stem cells. *Immunotherapy* (2011) 3(1):97–106. doi: 10.2217/imt.10.87
- Maniar A, Zhang X, Lin W, Gastman BR, Pauza CD, Strome SE, et al. Human gammadelta T lymphocytes induce robust NK cell-mediated antitumor cytotoxicity through CD137 engagement. *Blood* (2010) 116(10):1726–33. doi: 10.1182/blood-2009-07-234211
- Silva-Santos B, Mensurado S, Coffelt SB. $\gamma\delta$ T cells: pleiotropic immune effectors with therapeutic potential in cancer. *Nat Rev Cancer* (2019) 19(7):392–404. doi: 10.1038/s41568-019-0153-5
- Sebestyen Z, Prinz I, Déchanet-Merville J, Silva-Santos B, Kuball J. Translating gammadelta ($\gamma\delta$) T cells and their receptors into cancer cell therapies. *Nat Rev Drug Discovery* (2020) 19(3):169–84. doi: 10.1038/s41573-019-0038-z
- Kakimi K, Matsushita H, Murakawa T, Nakajima J. $\gamma\delta$ T cell therapy for the treatment of non-small cell lung cancer. *Transl Lung Cancer Res* (2014) 3(1):23–33. doi: 10.3978/j.issn.2218-6751.2013.11.01
- Wu Y, Kyle-Cezar F, Woolf RT, Naceur-Lombardelli C, Owen J, Biswas D, et al. An innate-like V δ 1+ $\gamma\delta$ T cell compartment in the human breast is associated with remission in triple-negative breast cancer. *Sci Transl Med* (2019) 11(513):eaax9364. doi: 10.1126/scitranslmed.aax9364
- Rei M, Pennington DJ, Silva-Santos B. The emerging Protumor role of $\gamma\delta$ T lymphocytes: implications for cancer immunotherapy. *Cancer Res* (2015) 75(5):798–802. doi: 10.1158/0008-5472.CAN-14-3228
- Wu X, Yang T, Liu X, Guo JN, Xie T, Ding Y, et al. IL-17 promotes tumor angiogenesis through Stat3 pathway mediated upregulation of VEGF in gastric cancer. *Tumour Biol* (2016) 37(4):5493–501. doi: 10.1007/s13277-015-4372-4
- Pan B, Shen J, Cao J, Zhou Y, Shang L, Jin S, et al. Interleukin-17 promotes angiogenesis by stimulating VEGF production of cancer cells via the STAT3/GIV signaling pathway in non-small-cell lung cancer. *Sci Rep* (2015) 5:16053. doi: 10.1038/srep16053

39. Yan J, Huang J. Innate $\gamma\delta$ T17 cells convert cancer-elicited inflammation into immunosuppression through myeloid-derived suppressor cells. *Oncoimmunology* (2014) 3(8):e953423. doi: 10.4161/21624011.2014.953423
40. Qu P, Wang LZ, Lin PC. Expansion and functions of myeloid-derived suppressor cells in the tumor microenvironment. *Cancer Lett* (2016) 380(1):253–6. doi: 10.1016/j.canlet.2015.10.022
41. Daley D, Zambirinis CP, Seifert L, Akkad N, Mohan N, Werba G, et al. $\gamma\delta$ T Cells Support Pancreatic Oncogenesis by Restraining $\alpha\beta$ T Cell Activation. *Cell* (2016) 166(6):1485–99.e15. doi: 10.1016/j.cell.2016.07.046
42. Lafont V, Sanchez F, Laprevotte E, Michaud HA, Gros L, Eliaou JF, et al. Plasticity of $\gamma\delta$ T Cells: Impact on the Anti-Tumor Response. *Front Immunol* (2014) 5:622. doi: 10.3389/fimmu.2014.00622
43. Lee HW, Chung YS, Kim TJ. Heterogeneity of Human $\gamma\delta$ T Cells and Their Role in Cancer Immunity. *Immune Netw* (2020) 20(1):e5. doi: 10.4110/in.2020.20.e5
44. Pang DJ, Neves JF, Sumaria N, Pennington DJ. Understanding the complexity of $\gamma\delta$ T-cell subsets in mouse and human. *Immunology* (2012) 136(3):283–90. doi: 10.1111/j.1365-2567.2012.03582.x
45. Adams EJ, Gu S, Luoma AM. Human gamma delta T cells: Evolution and ligand recognition. *Cell Immunol* (2015) 296(1):31–40. doi: 10.1016/j.cellimm.2015.04.008
46. Wu D, Wu P, Qiu F, Wei Q, Huang J. Human $\gamma\delta$ T-cell subsets and their involvement in tumor immunity. *Cell Mol Immunol* (2017) 14(3):245–53. doi: 10.1038/cmi.2016.55
47. Fichtner AS, Ravens S, Prinz I. Human $\gamma\delta$ TCR Repertoires in Health and Disease. *Cells* (2020) 9(4):800. doi: 10.3390/cells9040800
48. Mikulak J, Oriolo F, Bruni E, Roberto A, Colombo FS, Villa A, et al. NKp46-expressing human gut-resident intraepithelial V δ 1 T cell subpopulation exhibits high antitumor activity against colorectal cancer. *JCI Insight* (2019) 4(24):e125884. doi: 10.1172/jci.insight.125884
49. Knight A, Mackinnon S, Lowdell MW. Human Vdelta1 gamma-delta T cells exert potent specific cytotoxicity against primary multiple myeloma cells. *Cytotherapy* (2012) 14(9):1110–8. doi: 10.3109/14653249.2012.700766
50. Siegers GM, Dhamko H, Wang XH, Mathieson AM, Kosaka Y, Felizardo TC, et al. Human V δ 1 $\gamma\delta$ T cells expanded from peripheral blood exhibit specific cytotoxicity against B-cell chronic lymphocytic leukemia-derived cells. *Cytotherapy* (2011) 13(6):753–64. doi: 10.3109/14653249.2011.553595
51. Kühl AA, Pawlowski NN, Grollich K, Blessenohl M, Westermann J, Zeitz M, et al. Human peripheral gammadelta T cells possess regulatory potential. *Immunology* (2009) 128(4):580–8. doi: 10.1111/j.1365-2567.2009.03162.x
52. Alnaggar M, Xu Y, Li J, He J, Chen J, Li M, et al. Allogenic V γ 9V δ 2 T cell as new potential immunotherapy drug for solid tumor: a case study for cholangiocarcinoma. *J Immunother Cancer* (2019) 7(1):36. doi: 10.1186/s40425-019-0501-8
53. Meraviglia S, Eberl M, Vermijlen D, Todaro M, Buccheri S, Cicero G, et al. In vivo manipulation of Vgamma9Vdelta2 T cells with zoledronate and low-dose interleukin-2 for immunotherapy of advanced breast cancer patients. *Clin Exp Immunol* (2010) 161(2):290–7. doi: 10.1111/j.1365-2249.2010.04167.x
54. Di Carlo E, Bocca P, Emionite L, Cilli M, Cipollone G, Morandi F, et al. Mechanisms of the antitumor activity of human V γ 9V δ 2 T cells in combination with zoledronic acid in a preclinical model of neuroblastoma. *Mol Ther* (2013) 21(5):1034–43. doi: 10.1038/mt.2013.38
55. Joalland N, Chauvin C, Oliver L, Vallette FM, Pecqueur C, Jarry U, et al. IL-21 Increases the Reactivity of Allogeneic Human V γ 9V δ 2 T Cells Against Primary Glioblastoma Tumors. *J Immunother* (2018) 41(5):224–31. doi: 10.1097/CJI.0000000000000225
56. Lai D, Wang F, Chen Y, Wang C, Liu S, Lu B, et al. Human ovarian cancer stem-like cells can be efficiently killed by $\gamma\delta$ T lymphocytes. *Cancer Immunol Immunother* (2012) 61(7):979–89. doi: 10.1007/s00262-011-1166-4
57. Nishio N, Fujita M, Tanaka Y, Maki H, Zhang R, Hirose T, et al. Zoledronate sensitizes neuroblastoma-derived tumor-initiating cells to cytotoxicity mediated by human $\gamma\delta$ T cells. *J Immunother* (2012) 35(8):598–606. doi: 10.1097/CJI.0b013e31826a745a
58. Bartkowiak J, Kulczyk-Wojdala D, Blonski JZ, Robak T. Molecular diversity of gammadelta T cells in peripheral blood from patients with B-cell chronic lymphocytic leukaemia. *Neoplasma* (2002) 49(2):86–90. doi: 10.1038/sj.neo.7900211
59. Kenna T, Golden-Mason L, Norris S, Hegarty JE, O'Farrelly C, Doherty DG. Distinct subpopulations of gamma delta T cells are present in normal and tumor-bearing human liver. *Clin Immunol* (2004) 113(1):56–63. doi: 10.1016/j.clim.2004.05.003
60. Petrasca A, Melo AM, Breen EP, Doherty DG. Human V δ 3+ $\gamma\delta$ T cells induce maturation and IgM secretion by B cells. *Immunol Lett* (2018) 196:126–34. doi: 10.1016/j.imlet.2018.02.002
61. Mangan BA, Dunne MR, O'Reilly VP, Dunne PJ, Exley MA, O'Shea D, et al. Cutting edge: CD1d restriction and Th1/Th2/Th17 cytokine secretion by human V δ 3 T cells. *J Immunol* (2013) 191(1):30–4. doi: 10.4049/jimmunol.1300121
62. Zhao Y, Niu C, Cui J. Gamma-delta ($\gamma\delta$) T cells: friend or foe in cancer development? *J Transl Med* (2018) 16(1):3. doi: 10.1186/s12967-017-1378-2
63. Qin G, Liu Y, Zheng J, Xiang Z, Ng IH, Malik Peiris JS, et al. Phenotypic and functional characterization of human $\gamma\delta$ T-cell subsets in response to influenza A viruses. *J Infect Dis* (2012) 205(11):1646–53. doi: 10.1093/infdis/jis253
64. Lo Presti E, Toia F, Oieni S, Buccheri S, Turdo A, Mangiapane LR, et al. Squamous Cell Tumors Recruit $\gamma\delta$ T Cells Producing either IL17 or IFN γ Depending on the Tumor Stage. *Cancer Immunol Res* (2017) 5(5):397–407. doi: 10.1158/2326-6066.CIR-16-0348
65. Gober HJ, Kistowska M, Angman L, Jenö P, Mori L, De Libero G. Human T cell receptor gammadelta cells recognize endogenous mevalonate metabolites in tumor cells. *J Exp Med* (2003) 197(2):163–8. doi: 10.1084/jem.20021500
66. Silva-Santos B, Serre K, Norell H. $\gamma\delta$ T cells in cancer. *Nat Rev Immunol* (2015) 15(11):683–91. doi: 10.1038/nri3904
67. Mullen PJ, Yu R, Longo J, Archer MC, Penn LZ. The interplay between cell signalling and the mevalonate pathway in cancer. *Nat Rev Cancer* (2016) 16(11):718–31. doi: 10.1038/nrc.2016.76
68. Moulin M, Alguacil J, Gu S, Mehtougui A, Adams EJ, Peyrottes S, et al. V γ 9V δ 2 T cell activation by strongly agonistic nucleotidic phosphoantigens. *Cell Mol Life Sci* (2017) 74(23):4353–67. doi: 10.1007/s00018-017-2583-0
69. Kabelitz D. CD277 takes the lead in human $\gamma\delta$ T-cell activation. *Blood* (2012) 120(11):2159–61. doi: 10.1182/blood-2012-07-442731
70. Peigné CM, Léger A, Gesnel MC, Konczak F, Olive D, Bonneville M, et al. The Juxtamembrane Domain of Butyrophilin BTN3A1 Controls Phosphoantigen-Mediated Activation of Human V γ 9V δ 2 T Cells. *J Immunol* (2017) 198(11):4228–34. doi: 10.4049/jimmunol.1601910
71. Gu S, Sachleben JR, Boughter CT, Nawrocka WI, Borowska MT, Tarrasch JT, et al. Phosphoantigen-induced conformational change of butyrophilin 3A1 (BTN3A1) and its implication on V γ 9V δ 2 T cell activation. *Proc Natl Acad Sci U.S.A.* (2017) 114(35):E7311–20. doi: 10.1073/pnas.1707547114
72. Sandstrom A, Peigné CM, Léger A, Crooks JE, Konczak F, Gesnel MC, et al. The intracellular B30.2 domain of butyrophilin 3A1 binds phosphoantigens to mediate activation of human V γ 9V δ 2 T cells. *Immunity* (2014) 40(4):490–500. doi: 10.1016/j.immuni.2014.03.003
73. Wang H, Morita CT. Sensor Function for Butyrophilin 3A1 in Prenyl Pyrophosphate Stimulation of Human V γ 2V δ 2 T Cells. *J Immunol* (2015) 195(10):4583–94. doi: 10.4049/jimmunol.1500314
74. Gu S, Nawrocka W, Adams EJ. Sensing of Pyrophosphate Metabolites by V γ 9V δ 2 T Cells. *Front Immunol* (2015) 5:688. doi: 10.3389/fimmu.2014.00688
75. Nguyen K, Li J, Puthenveetil R, Lin X, Poe MM, Hsiao CC, et al. The butyrophilin 3A1 intracellular domain undergoes a conformational change involving the juxtamembrane region. *FASEB J* (2017) 31(11):4697–706. doi: 10.1096/fj.201601370RR
76. Vantourout P, Laing A, Woodward MJ, Zlatareva I, Apolonia L, Jones AW, et al. Heteromeric interactions regulate butyrophilin (BTN) and BTN-like molecules governing $\gamma\delta$ T cell biology. *Proc Natl Acad Sci U S A* (2018) 115(5):1039–44. doi: 10.1073/pnas.1701237115
77. Yang Y, Li L, Yuan L, Zhou X, Duan J, Xiao H, et al. A Structural Change in Butyrophilin upon Phosphoantigen Binding Underlies Phosphoantigen-Mediated V γ 9V δ 2 T Cell Activation. *Immunity* (2019) 50(4):1043–1053.e5. doi: 10.1016/j.immuni.2019.02.016
78. Vavassori S, Kumar A, Wan GS, Ramanjaneyulu GS, Cavallari M, El Daker S, et al. Butyrophilin 3A1 binds phosphorylated antigens and stimulates human $\gamma\delta$ T cells. *Nat Immunol* (2013) 14(9):908–16. doi: 10.1038/ni.2665

79. Karunakaran MM, Willcox CR, Salim M, Paletta D, Fichtner AS, Noll A, et al. Butyrophilin-2A1 Directly Binds Germline-Encoded Regions of the V γ 9V δ 2 TCR and Is Essential for Phosphoantigen Sensing. *Immunity* (2020) 52(3):487–498.e6. doi: 10.1016/j.immuni.2020.02.014
80. Rigau M, Ostrouska S, Fulford TS, Johnson DN, Woods K, Ruan Z, et al. Butyrophilin 2A1 is essential for phosphoantigen reactivity by $\gamma\delta$ T cells. *Science* (2020) 367(6478):eaay5516. doi: 10.1126/science.aay5516
81. Mookerjee-Basu J, Vantourout P, Martinez LO, Perret B, Collet X, Périgaud C, et al. F1-adenosine triphosphatase displays properties characteristic of an antigen presentation molecule for Vgamma9Vdelta2 T cells. *J Immunol* (2010) 184(12):6920–8. doi: 10.4049/jimmunol.0904024
82. Dhar P, Wu JD. NKG2D and its ligands in cancer. *Curr Opin Immunol* (2018) 51:55–61. doi: 10.1016/j.coi.2018.02.004
83. Niu C, Jin H, Li M, Xu J, Xu D, Hu J, et al. In vitro analysis of the proliferative capacity and cytotoxic effects of ex vivo induced natural killer cells, cytokine-induced killer cells, and gamma-delta T cells. *BMC Immunol* (2015) 16:61. doi: 10.1186/s12865-015-0124-x
84. Corvaisier M, Moreau-Aubry A, Diez E, Bennouna J, Mosnier JF, Scotet E, et al. V gamma 9V delta 2 T cell response to colon carcinoma cells. *J Immunol* (2005) 175(8):5481–8. doi: 10.4049/jimmunol.175.8.5481
85. Wang Z, Wang Z, Li S, Li B, Sun L, Li H, et al. Decitabine Enhances V γ 9V δ 2 T Cell-Mediated Cytotoxic Effects on Osteosarcoma Cells via the NKG2DL-NKG2D Axis. *Front Immunol* (2018) 9:1239. doi: 10.3389/fimmu.2018.01239
86. Toutirais O, Cabillic F, Le Fric G, Salot S, Loyer P, Le Gallo M, et al. DNAX accessory molecule-1 (CD226) promotes human hepatocellular carcinoma cell lysis by Vgamma9Vdelta2 T cells. *Eur J Immunol* (2009) 39(5):1361–8. doi: 10.1002/eji.200838409
87. Gertner-Dardenne J, Castellano R, Mamessier E, Garbit S, Kochbati E, Etienne A, et al. Human V γ 9V δ 2 T cells specifically recognize and kill acute myeloid leukemic blasts. *J Immunol* (2012) 188(9):4701–8. doi: 10.4049/jimmunol.1103710
88. Deniger DC, Maiti SN, Mi T, Switzer KC, Ramachandran V, Hurton LV, et al. Activating and propagating polyclonal gamma delta T cells with broad specificity for malignancies. *Clin Cancer Res* (2014) 20(22):5708–19. doi: 10.1158/1078-0432.CCR-13-3451
89. Wang X, Mou W, Han W, Xi Y, Chen X, Zhang H, et al. Diminished cytolytic activity of $\gamma\delta$ T cells with reduced DNAM-1 expression in neuroblastoma patients. *Clin Immunol* (2019) 203:63–71. doi: 10.1016/j.clim.2019.04.006
90. Luoma AM, Castro CD, Adams EJ. $\gamma\delta$ T cell surveillance via CD1 molecules. *Trends Immunol* (2014) 35(12):613–21. doi: 10.1016/j.it.2014.09.003
91. Luoma AM, Castro CD, Mayassi T, Bembinster LA, Bai L, Picard D, et al. Crystal structure of V δ 1 T cell receptor in complex with CD1d-sulfatide shows MHC-like recognition of a self-lipid by human $\gamma\delta$ T cells. *Immunity* (2013) 39(6):1032–42. doi: 10.1016/j.immuni.2013.11.001
92. Dhodapkar MV, Geller MD, Chang DH, Shimizu K, Fujii S, Dhodapkar KM, et al. A reversible defect in natural killer T cell function characterizes the progression of premalignant to malignant multiple myeloma. *J Exp Med* (2003) 197(12):1667–76. doi: 10.1084/jem.20021650
93. Shyanti RK, Sehrawat A, Singh SV, Mishra JPN, Singh RP. Zerumbone modulates CD1d expression and lipid antigen presentation pathway in breast cancer cells. *Toxicol In Vitro* (2017) 44:74–84. doi: 10.1016/j.tiv.2017.06.016
94. Nowak M, Arredouani MS, Tun-Kyi A, Schmidt-Wolf I, Sanda MG, Balk SP, et al. Defective NKT cell activation by CD1d+ TRAMP prostate tumor cells is corrected by interleukin-12 with α -galactosylceramide. *PLoS One* (2010) 5(6):e11311. doi: 10.1371/journal.pone.0011311
95. Vermeulen JF, van Hecke W, Spliet WG, Villacorta Hidalgo J, Fisch P, Broekhuizen R, et al. Pediatric Primitive Neuroectodermal Tumors of the Central Nervous System Differentially Express Granzyme Inhibitors. *PLoS One* (2016) 11(3):e0151465. doi: 10.1371/journal.pone.0151465
96. Xu B, Pizarro JC, Holmes MA, McBeth C, Groh V, Spies T, et al. Crystal structure of a gammadelta T-cell receptor specific for the human MHC class I homolog MICA. *Proc Natl Acad Sci U S A* (2011) 108(6):2414–9. doi: 10.1073/pnas.1015433108
97. Poggi A, Venturino C, Catellani S, Clavio M, Miglino M, Gobbi M, et al. Vdelta1 T lymphocytes from B-CLL patients recognize ULBP3 expressed on leukemic B cells and up-regulated by trans-retinoic acid. *Cancer Res* (2004) 64(24):9172–9. doi: 10.1158/0008-5472.CAN-04-2417
98. Almeida AR, Correia DV, Fernandes-Platzgummer A, da Silva CL, da Silva MG, Anjos DR, et al. Delta One T Cells for Immunotherapy of Chronic Lymphocytic Leukemia: Clinical-Grade Expansion/Differentiation and Preclinical Proof of Concept. *Clin Cancer Res* (2016) 22(23):5795–804. doi: 10.1158/1078-0432.CCR-16-0597
99. Hudspeth K, Silva-Santos B, Mavilio D. Natural cytotoxicity receptors: broader expression patterns and functions in innate and adaptive immune cells. *Front Immunol* (2013) 4:69. doi: 10.3389/fimmu.2013.00069
100. Silva-Santos B, Strid J. Working in “NK Mode”: Natural Killer Group 2 Member D and Natural Cytotoxicity Receptors in Stress-Surveillance by $\gamma\delta$ T Cells. *Front Immunol* (2018) 9:851. doi: 10.3389/fimmu.2018.00851
101. Di Lorenzo B, Simões AE, Caiado F, Tieppo P, Correia DV, Carvalho T, et al. Broad Cytotoxic Targeting of Acute Myeloid Leukemia by Polyclonal Delta One T Cells. *Cancer Immunol Res* (2019) 7(4):552–8. doi: 10.1158/2326-6066.CIR-18-0647
102. Voskoboinik I, Whisstock JC, Trapani JA. Perforin and granzymes: function, dysfunction and human pathology. *Nat Rev Immunol* (2015) 15(6):388–400. doi: 10.1038/nri3839
103. Praper T, Sonnen A, Viero G, Kladnik A, Froelich CJ, Anderlüh G, et al. Human perforin employs different avenues to damage membranes. *J Biol Chem* (2011) 286(4):2946–55. doi: 10.1074/jbc.M110.169417
104. Prager I, Liesche C, van Ooijen H, Urlaub D, Verron Q, Sandström N, et al. NK cells switch from granzyme B to death receptor-mediated cytotoxicity during serial killing. *J Exp Med* (2019) 216(9):2113–27. doi: 10.1084/jem.20181454
105. van Tetering G, Bovenschen N, Meeldijk J, van Diest PJ, Vooijs M. Cleavage of Notch1 by granzyme B disables its transcriptional activity. *Biochem J* (2011) 437(2):313–22. doi: 10.1042/BJ20110226
106. Alexander AA, Maniar A, Cummings JS, Hebbeler AM, Schulze DH, Gastman BR, et al. Isopentenyl pyrophosphate-activated CD56+ {gamma} {delta} T lymphocytes display potent antitumor activity toward human squamous cell carcinoma. *Clin Cancer Res* (2008) 14(13):4232–40. doi: 10.1158/1078-0432.CCR-07-4912
107. Dhar S, Chiplunkar SV. Lysis of aminobisphosphonate-sensitized MCF-7 breast tumor cells by V γ 9V δ 2 T cells. *Cancer Immunol* (2010) 10:10.
108. Viey E, Fromont G, Escudier B, Morel Y, Da Rocha S, Chouaib S, et al. Phosphostim-activated gamma delta T cells kill autologous metastatic renal cell carcinoma. *J Immunol* (2005) 174(3):1338–47. doi: 10.4049/jimmunol.174.3.1338
109. Lafont V, Liautard J, Liautard JP, Favero J. Production of TNF-alpha by human V gamma 9V delta 2 T cells via engagement of Fc gamma RIIIA, the low affinity type 3 receptor for the Fc portion of IgG, expressed upon TCR activation by nonpeptidic antigen. *J Immunol* (2001) 166(12):7190–9. doi: 10.4049/jimmunol.166.12.7190
110. Fisher JP, Yan M, Heuwerkerks J, Carter L, Abolhassani A, Frosch J, et al. Neuroblastoma killing properties of V δ 2 and V δ 2-negative $\gamma\delta$ T cells following expansion by artificial antigen-presenting cells. *Clin Cancer Res* (2014) 20(22):5720–32. doi: 10.1158/1078-0432.CCR-13-3464
111. Tokuyama H, Hagi T, Mattarollo SR, Morley J, Wang Q, So HF, et al. V gamma 9 V delta 2 T cell cytotoxicity against tumor cells is enhanced by monoclonal antibody drugs—rituximab and trastuzumab. *Int J Cancer* (2008) 122(11):2526–34. doi: 10.1002/ijc.23365
112. Gertner-Dardenne J, Bonnafous C, Bezombes C, Capietto AH, Scaglione V, Ingoure S, et al. Bromohydrin pyrophosphate enhances antibody-dependent cell-mediated cytotoxicity induced by therapeutic antibodies. *Blood* (2009) 113(20):4875–84. doi: 10.1182/blood-2008-08-172296
113. Capietto AH, Martinet L, Fournié JJ. Stimulated $\gamma\delta$ T cells increase the in vivo efficacy of trastuzumab in HER-2+ breast cancer. *J Immunol* (2011) 187(2):1031–8. doi: 10.4049/jimmunol.1100681
114. Tatsuta T, Shiraishi A, Mountz JD. The prodomain of caspase-1 enhances Fas-mediated apoptosis through facilitation of caspase-8 activation. *J Biol Chem* (2000) 275(19):14248–54. doi: 10.1074/jbc.275.19.14248
115. Sprick MR, Rieser E, Stahl H, Grosse-Wilde A, Weigand MA, Walczak H. Caspase-10 is recruited to and activated at the native TRAIL and CD95 death-inducing signalling complexes in a FADD-dependent manner but can

- not functionally substitute caspase-8. *EMBO J* (2002) 21(17):4520–30. doi: 10.1093/emboj/cdf441
116. Milhas D, Cuvillier O, Therville N, Clavé P, Thomsen M, Levade T, et al. Caspase-10 triggers Bid cleavage and caspase cascade activation in FasL-induced apoptosis. *J Biol Chem* (2005) 280(20):19836–42. doi: 10.1074/jbc.M414358200
 117. Todaro M, D'Asaro M, Caccamo N, Iovino F, Francipane MG, Meraviglia S, et al. Efficient killing of human colon cancer stem cells by gammadelta T lymphocytes. *J Immunol* (2009) 182(11):7287–96. doi: 10.4049/jimmunol.0804288
 118. Dieli F, Vermijlen D, Fulfaro F, Caccamo N, Meraviglia S, Cicero G, et al. Targeting human $\{\gamma\}$ $\{\delta\}$ T cells with zoledronate and interleukin-2 for immunotherapy of hormone-refractory prostate cancer. *Cancer Res* (2007) 67(15):7450–7. doi: 10.1158/0008-5472.CAN-07-0199
 119. Li Z, Peng H, Xu Q, Ye Z. Sensitization of human osteosarcoma cells to $\{\gamma\}$ $\{\delta\}$ T-cell-mediated cytotoxicity by zoledronate. *J Orthop Res* (2012) 30(5):824–30. doi: 10.1002/jor.21579
 120. Dokouhaki P, Schuh NW, Joe B, Allen CA, Der SD, Tsao MS, et al. NKG2D regulates production of soluble TRAIL by ex vivo expanded human $\gamma\delta$ T cells. *Eur J Immunol* (2013) 43(12):3175–82. doi: 10.1002/eji.201243150
 121. Fiandalo MV, Schwarze SR, Kyprianou N. Proteasomal regulation of caspase-8 in cancer cell apoptosis. *Apoptosis* (2013) 18(6):766–76. doi: 10.1007/s10495-013-0821-y
 122. Li M, Le W, Zhang XM, Zhang YJ, Jiang J, Liu PY. The M476W/Q482H mutation of procaspase-8 restored caspase-8-mediated apoptosis. *Biochem Biophys Res Commun* (2019) 514(3):653–8. doi: 10.1016/j.bbrc.2019.05.023
 123. Mao ZG, Jiang CC, Yang F, Thorne RF, Hersey P, Zhang XD. TRAIL-induced apoptosis of human melanoma cells involves activation of caspase-4. *Apoptosis* (2010) 15(10):1211–22. doi: 10.1007/s10495-010-0513-9
 124. Seo J, Lee EW, Shin J, Seong D, Nam YW, Jeong M, et al. K6 linked polyubiquitylation of FADD by CHIP prevents death inducing signaling complex formation suppressing cell death. *Oncogene* (2018) 37(36):4994–5006. doi: 10.1038/s41388-018-0323-z
 125. Li Z, Xu Q, Peng H, Cheng R, Sun Z, Ye Z. IFN- γ enhances HOS and U2OS cell lines susceptibility to $\gamma\delta$ T cell-mediated killing through the Fas/Fas ligand pathway. *Int Immunopharmacol* (2011) 11(4):496–503. doi: 10.1016/j.intimp.2011.01.001
 126. Reboursiere E, Gac AC, Garnier A, Salaun V, Reman O, Pham AD, et al. Increased frequencies of circulating and tumor-resident $\{\delta\}$ $\{\delta\}$ T cells in patients with diffuse large B-cell lymphoma. *Leuk Lymphoma* (2018) 59(1):187–95. doi: 10.1080/10428194.2017.1321751
 127. Ebert LM, Meuter S, Moser B. Homing and function of human skin gammadelta T cells and NK cells: relevance for tumor surveillance. *J Immunol* (2006) 176(7):4331–6. doi: 10.4049/jimmunol.176.7.4331
 128. Zhou J, Kang N, Cui L, Ba D, He W. Anti- $\gamma\delta$ TCR antibody-expanded $\gamma\delta$ T cells: a better choice for the adoptive immunotherapy of lymphoid malignancies. *Cell Mol Immunol* (2012) 9(1):34–44. doi: 10.1038/cmi.2011.16
 129. Simões C, Silva I, Carvalho A, Silva S, Santos S, Marques G, et al. Quantification and phenotypic characterization of peripheral blood $\{\delta\}$ $\{\delta\}$ T cells in chronic lymphocytic leukemia and monoclonal B cell lymphocytosis. *Cytometry B Clin Cytom* (2019) 96(2):164–8. doi: 10.1002/cyto.b.21645
 130. Correia DV, Fogli M, Hudspeth K, da Silva MG, Mavilio D, Silva-Santos B. Differentiation of human peripheral blood $\{\delta\}$ $\{\delta\}$ T cells expressing the natural cytotoxicity receptor NKP30 for recognition of lymphoid leukemia cells. *Blood* (2011) 118(4):992–1001. doi: 10.1182/blood-2011-02-339135
 131. Wu D, Wu P, Wu X, Ye J, Wang Z, Zhao S, et al. Ex vivo expanded human circulating $\{\delta\}$ $\{\delta\}$ T cells exhibit favorable therapeutic potential for colon cancer. *Oncoimmunology* (2015) 4(3):e992749. doi: 10.4161/2162402X.2014.992749
 132. Brandes M, Willmann K, Moser B. Professional antigen-presentation function by human gammadelta T Cells. *Science* (2005) 309(5732):264–8. doi: 10.1126/science.1110267
 133. Khan MW, Curbishley SM, Chen HC, Thomas AD, Pircher H, Mavilio D, et al. Expanded Human Blood-Derived $\gamma\delta$ T Cells Display Potent Antigen-Presentation Functions. *Front Immunol* (2014) 5:344. doi: 10.3389/fimmu.2014.00344
 134. Mao C, Mou X, Zhou Y, Yuan G, Xu C, Liu H, et al. Tumor-activated TCR $\gamma\delta^+$ T cells from gastric cancer patients induce the antitumor immune response of TCR $\alpha\beta^+$ T cells via their antigen-presenting cell-like effects. *J Immunol Res* (2014) 2014:593562. doi: 10.1155/2014/593562
 135. Sawaisorn P, Tangchaikereee T, Chan-On W, Leepiyasakulchai C, Udomsangpetch R, Hongeng S, et al. Antigen-Presenting Cell Characteristics of Human $\gamma\delta$ T Lymphocytes in Chronic Myeloid Leukemia. *Immunol Invest* (2019) 48(1):11–26. doi: 10.1080/08820139.2018.1529039
 136. Muto M, Baghdadi M, Maekawa R, Wada H, Seino K. Myeloid molecular characteristics of human $\gamma\delta$ T cells support their acquisition of tumor antigen-presenting capacity. *Cancer Immunol Immunother* (2015) 64(8):941–9. doi: 10.1007/s00262-015-1700-x
 137. Himoudi N, Morgenstern DA, Yan M, Vernay B, Saraiva L, Wu Y, et al. Human $\gamma\delta$ T lymphocytes are licensed for professional antigen presentation by interaction with opsonized target cells. *J Immunol* (2012) 188(4):1708–16. doi: 10.4049/jimmunol.1102654
 138. Chen HC, Joalland N, Bridgeman JS, Alchami FS, Jarry U, Khan MWA, et al. Synergistic targeting of breast cancer stem-like cells by human $\gamma\delta$ T cells and CD8+ T cells. *Immunol Cell Biol* (2017) 95(7):620–9. doi: 10.1038/icb.2017.21
 139. Münz C, Steinman RM, Fujii S. Dendritic cell maturation by innate lymphocytes: coordinated stimulation of innate and adaptive immunity. *J Exp Med* (2005) 202(2):203–7. doi: 10.1084/jem.20050810
 140. Devilder MC, Maillat S, Bouyge-Moreau I, Donnadieu E, Bonneville M, Scotet E. Potentiation of antigen-stimulated V gamma 9V delta 2 T cell cytokine production by immature dendritic cells (DC) and reciprocal effect on DC maturation. *J Immunol* (2006) 176(3):1386–93. doi: 10.4049/jimmunol.176.3.1386
 141. Conti L, Casetti R, Cardone M, Varano B, Martino A, Belardelli F, et al. Reciprocal activating interaction between dendritic cells and pamidronate-stimulated gammadelta T cells: role of CD86 and inflammatory cytokines. *J Immunol* (2005) 174(1):252–60. doi: 10.4049/jimmunol.174.1.252
 142. Girard P, Ponsard B, Charles J, Chaperot L, Aspod C. Potent Bidirectional Cross-Talk Between Plasmacytoid Dendritic Cells and $\gamma\delta$ T Cells Through BTN3A, Type I/II IFNs and Immune Checkpoints. *Front Immunol* (2020) 11:861. doi: 10.3389/fimmu.2020.00861
 143. Castella B, Kopecka J, Sciancalepore P, Mandili G, Foglietta M, Mitro N, et al. The ATP-binding cassette transporter A1 regulates phosphoantigen release and $\{\delta\}$ $\{\delta\}$ T cell activation by dendritic cells. *Nat Commun* (2017) 8:15663. doi: 10.1038/ncomms15663
 144. Nabholtz JM, Abrial C, Mouret-Reynier MA, Dauplat MM, Weber B, Gligorov J, et al. Multicentric neoadjuvant phase II study of panitumumab combined with an anthracycline/taxane-based chemotherapy in operable triple-negative breast cancer: identification of biologically defined signatures predicting treatment impact. *Ann Oncol* (2014) 25(8):1570–7. doi: 10.1093/annonc/mdu183
 145. Van Hede D, Polese B, Humblet C, Wilharm A, Renoux V, Dortu E, et al. Human papillomavirus oncoproteins induce a reorganization of epithelial-associated $\gamma\delta$ T cells promoting tumor formation. *Proc Natl Acad Sci U S A* (2017) 114(43):E9056–65. doi: 10.1073/pnas.1712883114
 146. Zhou BY, Gong JH, Cai XY, Wang JX, Luo F, Jiang N, et al. An imbalance between stellate cells and $\gamma\delta$ T cells contributes to hepatocellular carcinoma aggressiveness and recurrence. *Hepato Int* (2019) 13(5):631–40. doi: 10.1007/s12072-019-09969-w
 147. Welte T, Zhang XH. Interleukin-17 Could Promote Breast Cancer Progression at Several Stages of the Disease. *Mediators Inflamm* (2015) 2015:804347. doi: 10.1155/2015/804347
 148. Qian X, Chen H, Wu X, Hu L, Huang Q, Jin Y. Interleukin-17 acts as double-edged sword in anti-tumor immunity and tumorigenesis. *Cytokine* (2017) 89:34–44. doi: 10.1016/j.cyt.2015.09.011
 149. Meraviglia S, Lo Presti E, Tosolini M, La Mendola C, Orlando V, Todaro M, et al. Distinctive features of tumor-infiltrating $\gamma\delta$ T lymphocytes in human colorectal cancer. *Oncoimmunology* (2017) 6(10):e1347742. doi: 10.1080/2162402X.2017.1347742
 150. Wu P, Wu D, Ni C, Ye J, Chen W, Hu G, et al. $\gamma\delta$ T17 cells promote the accumulation and expansion of myeloid-derived suppressor cells in human

- colorectal cancer. *Immunity* (2014) 40(5):785–800. doi: 10.1016/j.immuni.2014.03.013
151. Aotsuka A, Matsumoto Y, Arimoto T, Kawata A, Ogishima J, Taguchi A, et al. Interleukin-17 is associated with expression of programmed cell death 1 ligand 1 in ovarian carcinoma. *Cancer Sci* (2019) 110(10):3068–78. doi: 10.1111/cas.14174
152. Wistuba-Hamprecht K, Di Benedetto S, Schilling B, Sucker A, Schadendorf D, Garbe C, et al. Phenotypic characterization and prognostic impact of circulating $\gamma\delta$ and $\alpha\beta$ T-cells in metastatic malignant melanoma. *Int J Cancer* (2016) 138(3):698–704. doi: 10.1002/ijc.29818
153. Wistuba-Hamprecht K, Martens A, Haehnel K, Geukes Foppen M, Yuan J, Postow MA, et al. Proportions of blood-borne V δ 1+ and V δ 2+ T-cells are associated with overall survival of melanoma patients treated with ipilimumab. *Eur J Cancer* (2016) 64:116–26. doi: 10.1016/j.ejca.2016.06.001
154. Rong L, Li K, Li R, Liu HM, Sun R, Liu XY. Analysis of tumor-infiltrating gamma delta T cells in rectal cancer. *World J Gastroenterol* (2016) 22(13):3573–80. doi: 10.3748/wjg.v22.i13.3573
155. Chen X, Shang W, Xu R, Wu M, Zhang X, Huang P, et al. Distribution and functions of $\gamma\delta$ T cells infiltrated in the ovarian cancer microenvironment. *J Transl Med* (2019) 17(1):144. doi: 10.1186/s12967-019-1897-0
156. Patil RS, Shah SU, Shrikhande SV, Goel M, Dikshit RP, Chiplunkar SV. IL17 producing $\gamma\delta$ T cells induce angiogenesis and are associated with poor survival in gallbladder cancer patients. *Int J Cancer* (2016) 139(4):869–81. doi: 10.1002/ijc.30134
157. Sacchi A, Tumino N, Sabatini A, Cimini E, Casetti R, Bordoni V, et al. Myeloid-Derived Suppressor Cells Specifically Suppress IFN- γ Production and Antitumor Cytotoxic Activity of V δ 2 T Cells. *Front Immunol* (2018) 9:1271. doi: 10.3389/fimmu.2018.01271
158. Yu SJ, Ma C, Heinrich B, Brown ZJ, Sandhu M, Zhang Q, et al. Targeting the crosstalk between cytokine-induced killer cells and myeloid-derived suppressor cells in hepatocellular carcinoma. *J Hepatol* (2019) 70(3):449–57. doi: 10.1016/j.jhep.2018.10.040
159. Romano A, Parrinello NL, La Cava P, Tibullo D, Giallongo C, Camiolo G, et al. PMN-MDSC and arginase are increased in myeloma and may contribute to resistance to therapy. *Expert Rev Mol Diagn* (2018) 18(7):675–83. doi: 10.1080/14737159.2018.1470929
160. Okla K, Czerwonka A, Wawruszak A, Bobiński M, Bilaska M, Tarkowski R, et al. Clinical Relevance and Immunosuppressive Pattern of Circulating and Infiltrating Subsets of Myeloid-Derived Suppressor Cells (MDSCs) in Epithelial Ovarian Cancer. *Front Immunol* (2019) 10:691. doi: 10.3389/fimmu.2019.00691
161. Peng G, Wang HY, Peng W, Kiniwa Y, Seo KH, Wang RF. Tumor-infiltrating gammadelta T cells suppress T and dendritic cell function via mechanisms controlled by a unique toll-like receptor signaling pathway. *Immunity* (2007) 27(2):334–48. doi: 10.1016/j.immuni.2007.05.020
162. Ye J, Ma C, Wang F, Hsueh EC, Toth K, Huang Y, et al. Specific recruitment of $\gamma\delta$ regulatory T cells in human breast cancer. *Cancer Res* (2013) 73(20):6137–48. doi: 10.1158/0008-5472.CAN-13-0348
163. Ye J, Ma C, Hsueh EC, Eickhoff CS, Zhang Y, Varvares MA, et al. Tumor-derived $\gamma\delta$ regulatory T cells suppress innate and adaptive immunity through the induction of immunosenescence. *J Immunol* (2013) 190(5):2403–14. doi: 10.4049/jimmunol.1202369
164. Kobayashi H, Tanaka Y, Yagi J, Osaka Y, Nakazawa H, Uchiyama T, et al. Safety profile and anti-tumor effects of adoptive immunotherapy using gamma-delta T cells against advanced renal cell carcinoma: a pilot study. *Cancer Immunol Immunother* (2007) 56(4):469–76. doi: 10.1007/s00262-006-0199-6
165. Kobayashi H, Tanaka Y, Yagi J, Minato N, Tanabe K. Phase I/II study of adoptive transfer of $\gamma\delta$ T cells in combination with zoledronic acid and IL-2 to patients with advanced renal cell carcinoma. *Cancer Immunol Immunother* (2011) 60(8):1075–84. doi: 10.1007/s00262-011-1021-7
166. Nicol AJ, Tokuyama H, Mattarollo SR, Hagi T, Suzuki K, Yokokawa K, et al. Clinical evaluation of autologous gamma delta T cell-based immunotherapy for metastatic solid tumours. *Br J Cancer* (2011) 105(6):778–86. doi: 10.1038/bjc.2011.293
167. Abe Y, Muto M, Nieda M, Nakagawa Y, Nicol A, Kaneko T, et al. Clinical and immunological evaluation of zoledronate-activated Vgamma9gammadelta T-cell-based immunotherapy for patients with multiple myeloma. *Exp Hematol* (2009) 37(8):956–68. doi: 10.1016/j.exphem.2009.04.008
168. Bennouna J, Bompas E, Neidhardt EM, Rolland F, Philip I, Galéa C, et al. Phase-I study of Innacell gammadelta, an autologous cell-therapy product highly enriched in gamma9delta2 T lymphocytes, in combination with IL-2, in patients with metastatic renal cell carcinoma. *Cancer Immunol Immunother* (2008) 57(11):1599–609. doi: 10.1007/s00262-008-0491-8
169. Nakajima J, Murakawa T, Fukami T, Goto S, Kaneko T, Yoshida Y, et al. A phase I study of adoptive immunotherapy for recurrent non-small-cell lung cancer patients with autologous gammadelta T cells. *Eur J Cardiothorac Surg* (2010) 37(5):1191–7. doi: 10.1016/j.ejcts.2009.11.051
170. Sakamoto M, Nakajima J, Murakawa T, Fukami T, Yoshida Y, Murayama T, et al. Adoptive immunotherapy for advanced non-small cell lung cancer using zoledronate-expanded $\gamma\delta$ Tcells: a phase I clinical study. *J Immunother* (2011) 34(2):202–11. doi: 10.1097/CJI.0b013e318207ecfb
171. Wada I, Matsushita H, Noji S, Mori K, Yamashita H, Nomura S, et al. Intraperitoneal injection of in vitro expanded V γ 9V δ 2 T cells together with zoledronate for the treatment of malignant ascites due to gastric cancer. *Cancer Med* (2014) 3(2):362–75. doi: 10.1002/cam4.196
172. Lang JM, Kaikobad MR, Wallace M, Staab MJ, Horvath DL, Wilding G, et al. Pilot trial of interleukin-2 and zoledronic acid to augment $\gamma\delta$ T cells as treatment for patients with refractory renal cell carcinoma. *Cancer Immunol Immunother* (2011) 60(10):1447–60. doi: 10.1007/s00262-011-1049-8
173. Pressey JG, Adams J, Harkins L, Kelly D, You Z, Lamb LS Jr. In vivo expansion and activation of $\gamma\delta$ T cells as immunotherapy for refractory neuroblastoma: A phase 1 study. *Med (Baltimore)* (2016) 95(39):e4909. doi: 10.1097/MD.0000000000004909
174. Kunzmann V, Smetak M, Kimmel B, Weigang-Koehler K, Goebeler M, Birkmann J, et al. Tumor-promoting versus tumor-antagonizing roles of $\gamma\delta$ T cells in cancer immunotherapy: results from a prospective phase I/II trial. *J Immunother* (2012) 35(2):205–13. doi: 10.1097/CJI.0b013e318245bb1e
175. Wilhelm M, Kunzmann V, Eckstein S, Reimer P, Weissinger F, Ruediger T, et al. Gammadelta T cells for immune therapy of patients with lymphoid malignancies. *Blood* (2003) 102(1):200–6. doi: 10.1182/blood-2002-12-3665
176. Bennouna J, Levy V, Sicard H, Senellart H, Audrain M, Huret S, et al. Phase I study of bromohydrin pyrophosphate (BrHPP, IPH 1101), a Vgamma9Vdelta2 T lymphocyte agonist in patients with solid tumors. *Cancer Immunol Immunother* (2010) 59(10):1521–30. doi: 10.1007/s00262-010-0879-0
177. Kouakanou L, Xu Y, Peters C, He J, Wu Y, Yin Z, et al. Vitamin C promotes the proliferation and effector functions of human $\gamma\delta$ T cells. *Cell Mol Immunol* (2020) 17(5):462–73. doi: 10.1038/s41423-019-0247-8
178. Jiang H, Yang Z, Song Z, Green M, Song H, Shao Q. $\gamma\delta$ T cells in hepatocellular carcinoma patients present cytotoxic activity but are reduced in potency due to IL-2 and IL-21 pathways. *Int Immunopharmacol* (2019) 70:167–73. doi: 10.1016/j.intimp.2019.02.019
179. Duault C, Betous D, Bezombes C, Roga S, Cayrol C, Girard JP, et al. IL-33-expanded human V γ 9V δ 2 T cells have anti-lymphoma effect in a mouse tumor model. *Eur J Immunol* (2017) 47(12):2137–41. doi: 10.1002/eji.201747093
180. Van Acker HH, Anguille S, Willemen Y, Van den Bergh JM, Berneman ZN, Lion E, et al. Interleukin-15 enhances the proliferation, stimulatory phenotype, and antitumor effector functions of human gamma delta T cells. *J Hematol Oncol* (2016) 9(1):101. doi: 10.1186/s13045-016-0329-3
181. Cairo C, Sagnia B, Cappelli G, Colizzi V, Leke RG, Leke RJ, et al. Human cord blood $\gamma\delta$ T cells expressing public V γ 2 chains dominate the response to bisphosphonate plus interleukin-15. *Immunology* (2013) 138(4):346–60. doi: 10.1111/imm.12039
182. Duault C, Franchini DM, Familiades J, Cayrol C, Roga S, Girard JP, et al. TCRV γ 9 $\gamma\delta$ T Cell Response to IL-33: A CD4 T Cell-Dependent Mechanism. *J Immunol* (2016) 196(1):493–502. doi: 10.4049/jimmunol.1500260
183. Aoki T, Matsushita H, Hoshikawa M, Hasegawa K, Kokudo N, Kakimi K. Adjuvant combination therapy with gemcitabine and autologous $\gamma\delta$ T-cell transfer in patients with curatively resected pancreatic cancer. *Cytotherapy* (2017) 19(4):473–85. doi: 10.1016/j.jcyt.2017.01.002
184. Wang S, Li H, Ye C, Lin P, Li B, Zhang W, et al. Valproic Acid Combined with Zoledronate Enhance $\gamma\delta$ T Cell-Mediated Cytotoxicity against Osteosarcoma Cells via the Accumulation of Mevalonate Pathway

- Intermediates. *Front Immunol* (2018) 9:377:377. doi: 10.3389/fimmu.2018.00377
185. Lin L, He J, Li J, Xu Y, Li J, Wu Y. Chitosan Nanoparticles Strengthen $V\gamma9V\delta2$ T-Cell Cytotoxicity Through Upregulation Of Killing Molecules And Cytoskeleton Polarization. *Int J Nanomedicine* (2019) 14:9325–36. doi: 10.2147/IJN.S212898
 186. Rossi C, Gravelle P, Decaup E, Bordenave J, Poupot M, Tosolini M, et al. Boosting $\gamma\delta$ T cell-mediated antibody-dependent cellular cytotoxicity by PD-1 blockade in follicular lymphoma. *Oncoimmunology* (2018) 8(3):1554175. doi: 10.1080/2162402X.2018.1554175
 187. Wu K, Zhao H, Xiu Y, Li Z, Zhao J, Xie S, et al. IL-21-mediated expansion of $V\gamma9V\delta2$ T cells is limited by the Tim-3 pathway. *Int Immunopharmacol* (2019) 69:136–42. doi: 10.1016/j.intimp.2019.01.027
 188. Li X, Lu H, Gu Y, Zhang X, Zhang G, Shi T, et al. Tim-3 suppresses the killing effect of $V\gamma9V\delta2^+$ T cells on colon cancer cells by reducing perforin and granzyme B expression. *Exp Cell Res* (2020) 386(1):111719. doi: 10.1016/j.yexcr.2019.111719
 189. Hoh A, Dewerth A, Vogt F, Wenz J, Baeuerle PA, Warmann SW, et al. The activity of $\gamma\delta$ T cells against paediatric liver tumour cells and spheroids in cell culture. *Liver Int* (2013) 33(1):127–36. doi: 10.1111/liv.12011
 190. Oberg HH, Janitschke L, Sulaj V, Weimer J, Gonnermann D, Hedemann N, et al. Bispecific antibodies enhance tumor-infiltrating T cell cytotoxicity against autologous HER-2-expressing high-grade ovarian tumors. *J Leukoc Biol* (2020) 107(6):1081–95. doi: 10.1002/JLB.5MA1119-265R
 191. Oberg HH, Peipp M, Kellner C, Sebens S, Krause S, Petrick D, et al. Novel bispecific antibodies increase $\gamma\delta$ T-cell cytotoxicity against pancreatic cancer cells. *Cancer Res* (2014) 74(5):1349–60. doi: 10.1158/0008-5472.CAN-13-0675
 192. Oberg HH, Kellner C, Gonnermann D, Peipp M, Peters C, Sebens S, et al. $\gamma\delta$ T cell activation by bispecific antibodies. *Cell Immunol* (2015) 296(1):41–9. doi: 10.1016/j.cellimm.2015.04.009
 193. Tawfik D, Groth C, Gundlach JP, Peipp M, Kabelitz D, Becker T, et al. TRAIL-Receptor 4 Modulates $\gamma\delta$ T Cell-Cytotoxicity Toward Cancer Cells. *Front Immunol* (2019) 10:2044. doi: 10.3389/fimmu.2019.02044
 194. Fisher J, Abramowski P, Wisidagamage Don ND, Flutter B, Capsomidis A, Cheung GW, et al. Avoidance of On-Target Off-Tumor Activation Using Co-stimulation-Only Chimeric Antigen Receptor. *Mol Ther* (2017) 25(5):1234–47. doi: 10.1016/j.ymthe.2017.03.002
 195. Capsomidis A, Benthall G, Van Acker HH, Fisher J, Kramer AM, Abeln Z, et al. Chimeric Antigen Receptor-Engineered Human Gamma Delta T Cells: Enhanced Cytotoxicity with Retention of Cross Presentation. *Mol Ther* (2018) 26(2):354–65. doi: 10.1016/j.ymthe.2017.12.001
 196. Marcu-Malina V, Heijhuurs S, van Buuren M, Hartkamp L, Strand S, Sebestyen Z, et al. Redirecting $\alpha\beta$ T cells against cancer cells by transfer of a broadly tumor-reactive $\gamma\delta$ T-cell receptor. *Blood* (2011) 118(1):50–9. doi: 10.1182/blood-2010-12-325993
 197. Gründer C, van Dorp S, Hol S, Drent E, Straetmans T, Heijhuurs S, et al. $\gamma9$ and $\delta2$ CDR3 domains regulate functional avidity of T cells harboring $\gamma9\delta2$ TCRs. *Blood* (2012) 120(26):5153–62. doi: 10.1182/blood-2012-05-432427
 198. Braham MVJ, Minnema MC, Aarts T, Sebestyen Z, Straetmans T, Vyborova A, et al. Cellular immunotherapy on primary multiple myeloma expanded in a 3D bone marrow niche model. *Oncoimmunology* (2018) 7(6):e1434465. doi: 10.1080/2162402X.2018.1434465
 199. Straetmans T, Kierkels GJJ, Doorn R, Jansen K, Heijhuurs S, Dos Santos JM, et al. GMP-Grade Manufacturing of T Cells Engineered to Express a Defined $\gamma\delta$ TCR. *Front Immunol* (2018) 9:1062. doi: 10.3389/fimmu.2018.01062
 200. Rodrigues NV, Correia DV, Mensurado S, Nóbrega-Pereira S, deBarros A, Kyle-Cezar F, et al. Low-Density Lipoprotein Uptake Inhibits the Activation and Antitumor Functions of Human $V\gamma9V\delta2$ T Cells. *Cancer Immunol Res* (2018) 6(4):448–57. doi: 10.1158/2326-6066.CIR-17-0327

Conflict of Interest: The authors declare that the research was conducted in the absence of any commercial or financial relationships that could be construed as a potential conflict of interest.

Copyright © 2021 Li, Li, Zhang, Wu and Chen. This is an open-access article distributed under the terms of the Creative Commons Attribution License (CC BY). The use, distribution or reproduction in other forums is permitted, provided the original author(s) and the copyright owner(s) are credited and that the original publication in this journal is cited, in accordance with accepted academic practice. No use, distribution or reproduction is permitted which does not comply with these terms.