



Tissue Resident Memory $\gamma\delta$ T Cells in Murine Uterus Expressed High Levels of IL-17 Promoting the Invasion of Trophocytes

Shuangpeng Kang¹, Qiongli Wu¹, Jun Huang², Binyan Yang¹, Changyan Liang³, Peidong Chi^{4*} and Changyou Wu^{1*}

¹ Institute of Immunology, Zhongshan School of Medicine, Sun Yat-sen University, Guangzhou, China, ² Key Laboratory of Immunology, Sino-French Hoffmann Institute, Guangzhou Medical University, Guangzhou, China, ³ Department of Gynecology and Obstetrics, Third Affiliated Hospital of Sun Yat-Sen University, Guangzhou, China, ⁴ Department of Clinical Laboratory, Sun Yat-sen University Cancer Center, State Key Laboratory of Oncology in South China, Collaborative Innovation Center for Cancer Medicine, Guangzhou, China

OPEN ACCESS

Edited by:

Wanjun Chen,
National Institutes of Health (NIH),
United States

Reviewed by:

Bin Li,
Shanghai Jiao Tong University School
of Medicine, China
Jianmin Zhang,
Chinese Academy of Medical
Sciences and Peking Union Medical
College, China

*Correspondence:

Peidong Chi
chipd@sysucc.org.cn
Changyou Wu
changyou_wu@yahoo.com

Specialty section:

This article was submitted to
T Cell Biology,
a section of the journal
Frontiers in Immunology

Received: 28 July 2020

Accepted: 02 December 2020

Published: 14 January 2021

Citation:

Kang S, Wu Q, Huang J, Yang B,
Liang C, Chi P and Wu C (2021) Tissue
Resident Memory $\gamma\delta$ T Cells in Murine
Uterus Expressed High Levels of IL-17
Promoting the Invasion of Trophocytes.
Front. Immunol. 11:588227.
doi: 10.3389/fimmu.2020.588227

$\gamma\delta$ T cells are non-conventional T cells and serve as the bridge for connecting the innate and adaptive immune systems. $\gamma\delta$ T cells form a substantial population at barrier sites and play an important role in the development of physiology, inflammation, autoimmune diseases and tumors. $\gamma\delta$ T cells not only distribute in the maternal-fetal interface during pregnancy but also in non-pregnant uterus. However, the phenotypes and functions of $\gamma\delta$ T cells in uterus were not clear. In the current study, we found that the percentages of $\gamma\delta$ T cells were significantly higher in uterus than peripheral blood and most of $\gamma\delta$ T cells in uterus were distributed in endometrium. Further studies indicated that the majority of $\gamma\delta$ T cells in uterus were memory cells with higher expression of CD44 and CD27 but lower expression of CD62L and CCR7 compared to those in blood. In addition, we found that $\gamma\delta$ T cells in uterus were tissue resident memory $\gamma\delta$ T cells expressing CD69, expressed high levels of CCR6, GranzymeB and CD107a. Moreover, $\gamma\delta$ T cells in uterus were activated and fully expressed transcription factor ROR γ t. After short time of activation, $\gamma\delta$ T cells in uterus significantly expressed high levels of IL-17 but not IFN- γ , which promotes the invasion of murine trophocytes. Taken together, our study will lay the foundation for future research on uterine $\gamma\delta$ T cells in pregnancy and autoimmune disease.

Keywords: tissue resident memory $\gamma\delta$ T cell, uterus, IL-17, ROR γ t, trophocyte

INTRODUCTION

T cells can be divided into $\alpha\beta$ T cells and $\gamma\delta$ T cells according to the constitution of T cell receptor (TCR). Unlike $\alpha\beta$ T cells, $\gamma\delta$ T cells are greatly enriched in mucosal and epithelial sites, such as the skin, respiratory tract, reproductive tracts and display immunologic features common to both the innate and adaptive immune systems (1–4). $\gamma\delta$ T cells can be divided into either IFN- γ -producing $\gamma\delta$ T cells or IL-17–producing $\gamma\delta$ T cells (5, 6). It has been previously reported that $\gamma\delta$ T cells play divergent roles in different tissues, such as pathogen clearance, core body temperature control in

adipose and synaptic plasticity regulation in meninges (7–9). In contrast to their beneficial role, $\gamma\delta$ T cells can lead to negative outcomes or exacerbate disease in some autoimmune diseases and cancers (10–12).

It was previously thought that memory T cells consisted of two major subsets: central memory T (T_{CM}) cells and effector memory T (T_{EM}) cells (13). More recently, it has been clear that there is another important subset of memory T cells: tissue resident memory T (T_{RM}) cells. Once established, T_{RM} cells could be long-term residency in peripheral tissues and provide protective immunity against pathogens that enter through the local tissues (14–16). In recent years, long-lived memory $\gamma\delta$ T cells are observed in certain tissues after local inflammation or bacterial infection which is termed as tissue resident $\gamma\delta$ T cells (3, 17, 18). Different from $\gamma\delta$ T cells in other tissues, the immune cells of uterus must both protect against infection and tolerate an allogeneic fetus during pregnancy. $\gamma\delta$ T cells are found to be abundant not only in the maternal-fetal interface during pregnancy, but also in non-pregnant uterus. In addition, there was higher percentages of $\gamma\delta$ T cells in allogenic matings compared with syngeneic matings, indicating that $\gamma\delta$ T cells may play an important role in successful pregnancy (4, 19, 20). $\gamma\delta$ T cells are significantly abundant in uterus and highly expressed IL-17. As we all know, autoimmune diseases tend to occur in women and IL-17 plays a crucial role in the development and progression of autoimmune diseases (11, 21, 22). Thus, it is tempting to assume that IL-17-producing- $\gamma\delta$ T cells in uterus may be related to the occurrence of autoimmune diseases in women. However, few literature on the phenotypic and functional characteristics of $\gamma\delta$ T cells in uterus has been published.

In the present study, to our knowledge for the first time, we found that $\gamma\delta$ T cells were enriched in uterus and the majority of $\gamma\delta$ T cells in uterus were tissue resident memory cells expressing significant high percentages of IL-17 with transcription factor ROR γ t but not IFN- γ . Based on our data, we might propose that those $\gamma\delta$ T cells in uterus were key source of IL-17, which can promote the invasion of trophocytes and play an important role in protecting infections or may be involved in the pregnancy or the pathogenesis of some autoimmune diseases in young female humans.

MATERIALS AND METHODS

Study Participants

Human endometrium tissues from 20 individuals obtained from patients undergoing uterectomy at Third Affiliated Hospital of Sun Yat-Sen University. Written informed consent was obtained from all individuals, and the protocol was approved by the Review Board of Sun Yat-sen University.

Animals

C57BL/6 mice aged 6 to 8 weeks were purchased from the Laboratory Animal Center of Sun Yat-sen University (S.C. XK 2016-0029) and maintained under pathogen-free conditions. Mice were age- and weight-matched in each experiment. All animal studies were reviewed and approved by the Zhongshan School of Experimental Animal Ethics Committee, Sun Yat-sen University, Guangzhou, China.

In Vivo Labeling of Cells in Circulation

To distinguish cells in circulation from uterine immune cells, anti-CD45- phycoerythrin (clone: 30-F11, BD Bioscience) was diluted to 10 μ g/ml in sterile PBS and injected intravenously into mice in a volume of 200 μ l/mouse. The mice were sacrificed after 5 min with or without cardiac perfusion, and mononuclear cells were isolated from blood and tissues for experiments. The cells labeled with anti-CD45 were identified as in circulation, and its counterpart was identified as uterine immune cells in flow cytometry data.

Cell Isolation

Mice were anesthetized by isoflurane and sacrificed in sterile environment. The blood in tissues was removed by cardiac perfusion with 50 ml PBS. Uterus were collected after opening the abdominal cavity and removing the surrounding adipose tissues. Uterus and human endometrium were cut into small pieces and digested with 5 to 10 ml digestion medium containing 2 mg/ml endotoxin-free collagenase I and 10 mg/ml DNase I (Sigma-Aldrich, USA) in RPMI-1640 for 1 h at 37°C with regular gentle shaking. Single cell suspensions were obtained by filtering through a 100- μ m nylon cell strainer (BD Bioscience Pharmingen, USA). The cell suspension was carefully layered over a discontinuous (40%/70%) Percoll (GE healthcare, USA) density gradients and then centrifuged at speed 2500 rpm/min for 20 min. The middle layer mononuclear cells were collected and washed with complete RPMI-1640 twice. The cells were counted and adjusted to a density of 1×10^6 cells/ml in complete RPMI-1640 medium for the next study.

Blood was obtained through orbit and heparin was used as anticoagulation. Blood was loaded onto Ficoll-Hypaque (Tianjin HaoYang Biological Manufacture, China) and centrifuged at speed 2200 rpm/min for 20 min, collected the mononuclear cells on upper layer and washed with complete RPMI-1640 twice. The cells were counted and adjusted to a density of 1×10^6 cells/ml in complete RPMI-1640 medium for the next study.

Murine placenta were collected on 13.5 dpc in pregnancy, minced into small pieces and digested with digestion medium containing 0.5 mg/ml endotoxin-free collagenase I (Sigma-Aldrich, USA) in RPMI-1640 for 30 min at 37°C. The cell suspension was carefully layered over a discontinuous (30%/45%/60%) Percoll density gradients and then centrifuged at speed 2200 rpm/min for 20 min. Single cell suspensions were obtained between 30% and 45% Percoll gradient and cultured in 5% CO₂ at 37°C for 30 min to remove the macrophage and fibroblasts. The non-adherent trophocytes were counted and adjusted to a density of 2.5×10^5 cells/ml in RPMI-1640 medium.

Flow Cytometry and MAbs

The procedures for studying cell phenotype, intracellular cytokines, and transcriptional factor expression had been previously described (23). Generally, cells were washed and suspended in 100 μ l of PBS containing 0.1% BSA and 0.05% sodium azide. For surface staining, cells were incubated with the respective mAbs at 4°C in the dark for 30 min. For the detection of intracellular cytokines, cells were fixed with 4% paraformaldehyde and permeabilized in PBS buffer containing

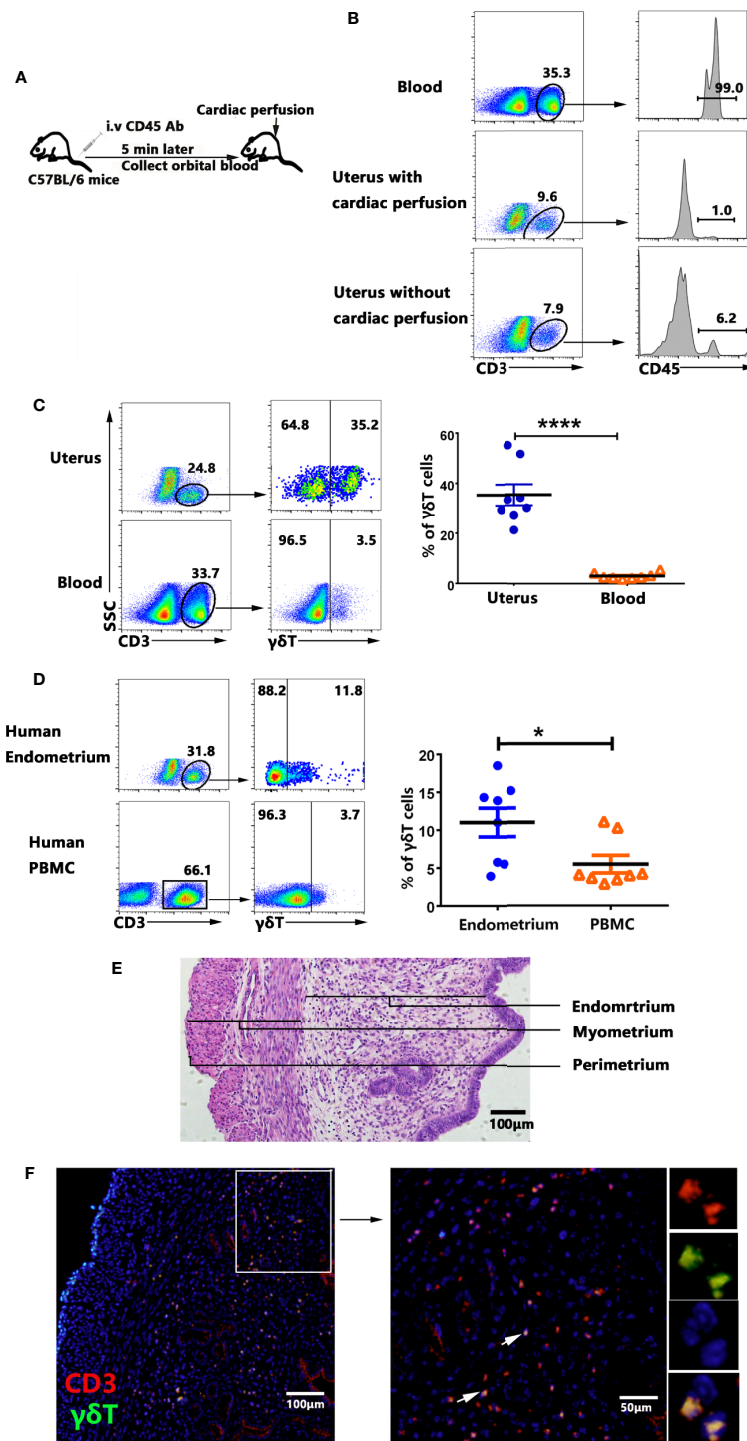


FIGURE 1 | Percentages and tissue localization of $\gamma\delta$ T cells within uterus. Female mice were intravenously injected (i.v.) with CD45-PE antibody to label the circulating T cells, collected orbital blood after 5 min and removed the blood in tissues by cardiac perfusion (A). The mononuclear cells from uterus and blood were stained with anti-CD3 and checked for the proportion of CD3⁺CD45⁺T cells by FACS. Data were representative of three independent experiments with 4 mice per group (B). The representative graphs and statistical analyses for the percentages of $\gamma\delta$ T cells in uterus and blood were shown (C). The representative graphs and statistical analyses for the percentages of $\gamma\delta$ T cells in human endometrium and peripheral blood were shown (D). Plots were gated on total live $\gamma\delta$ T cells. Histology of uterus sections was stained with haematoxylin and eosin (E). Immunofluorescence staining of CD3 (red), $\gamma\delta$ T cells (green) and DAPI (blue) in paraffin-embedded uterus tissues was shown (F). The arrows display the colocalization of CD3 and $\gamma\delta$ T cells. The scale bars represented 100 μ M (left) and 50 μ M (right). The data of each point from six mice were expressed as the mean \pm SEM. The statistical significance was determined with the Mann-Whitney U test. * $P < 0.05$, **** $P < 0.0001$.

0.1% saponin (Sigma-Aldrich, USA), 0.1% BSA and 0.05% sodium azide for at least 2 h or overnight at 4°C and stained with conjugated mAbs for intracellular cytokines. For the detection of intracellular transcription factors, cells were stained for surface antigens, followed by fixation, permeabilization with Permeabilization/Fixation buffer (BD Bioscience, USA) and staining according to the protocol of Permeabilization/Fixation Kit. Flow cytometry data were acquired with FACS Arial II (BD Bioscience, USA) and were analyzed with FlowJo software (Tree Star, USA). The following mAbs were used for cell surface or intracellular staining: PE-CF594 labeled anti-CD3, FITC labeled anti- $\gamma\delta$ T, anti-CD107a, anti-CD4, anti-CD127, APC-labeled anti-CD62L, anti-IFN- γ , anti-TNF- α , anti-NKG2D, anti-CD25, PE-labeled anti- $\gamma\delta$ T, anti-IL-17, anti-CCR7, anti-CD103, anti-GranzymeB, anti-ROR γ t, anti-pSTAT3, anti-Foxp3, Percp-cy5.5-labeled anti-CD44, PE-cy7 labeled anti-CD69, anti-IFN- γ , Apc-cy7 labeled anti-IL-17 and isotype-matched control antibodies were all purchased from BD Bioscience Pharmingen (San Jose, CA, USA).

Immunofluorescence Staining

Uterus were collected from mice after cardiac perfusion with PBS and fixed in 4% formaldehyde solution immediately and made into paraffin sections. Paraffin sections were stained with hematoxylin and eosin (HE). Paraffin sections of uterus were rehydrated and boiled in EDTA buffer (pH 6.0) for 20 min to induce antigen retrieval. After washing, tissue sections were blocked with 5% goat serum for 30 min at 37°C, followed by staining with rabbit anti-mouse CD3 antibody (Abcam, polyclone, 1:100) and armenian hamster anti-mouse $\gamma\delta$ T antibody (Santa Cruz Biotechnology, clone: UC7-13D5, 1:100) at 4°C overnight. Sections were washed four times for 5 min each time and incubated with Alexa Fluor 555-conjugated anti-rabbit IgG (Beyotime, 1:1000) plus DyLight 488-conjugated anti-Syrian hamster IgG (Abcam, 1:1000) for 30 min at 37°C in the dark. After a final washing, cover slips were mounted onto slides with fluoroshield mounting medium with DAPI (4, 6-diamidino-2-phenylindole, Abcam). Images were captured with Olympus microscope BX53 and processed with LSM Image Examiner software (Zeiss).

RT-PCR

For the gene expression of chemokine CCL20 in uterus and blood, uterus and blood were collected as described above. Total RNA were extracted by Trizol reagent (Invitrogen) and then reverse-transcribed with a cDNA Synthesis Supermix (novoprotein scientific Inc) according to the manufacturer's instruction. Amplification of cDNA was conducted in a DNA thermal cycler (Biometra, Germany). The following sense and antisense primers for each molecule were used: CCL20 Forward: 5'-CTCCTGGAGCTGAGAAT-3', reverse: 5'-C ATCTTC TTGACTCTTAGGC-3'; glyceraldehyde-3-phosphate dehydrogenase (GAPDH) forward: 5'-TCAATGAAG GGGTCTTGAT-3', reverse: 5'-CGTCCCGTA GACAAAATGG T-3'. The ratio of CCL20 over GAPDH was calculated according to the relative intensities of the bands revealed under UV illumination with Bio-1D software (VilberLourmat, Marne la Vallee, France).

Matrigel Invasion Assay

Transwell plates (6.5 mm in diameter) (Corning, Corning, NY, USA) containing polycarbonate filters with a pore size of 8.0 mm were used to perform the experiment. The upper surface of the filter was coated with 50 μ g Matrigel (Corning, Corning, NY, USA) and dried aseptically. The Matrigel was rehydrated with 200 μ l warm RPMI-1640 with 1% BSA for 2 h before use. The isolated murine trophocytes (0.5×10^5 in 200 μ l RPMI-1640 with 1%BSA) were seeded in the upper chamber. rmIL-17 (R&D Systems, USA) at final concentrations of 0, 2, 20 and 100 ng/ml was added. The lower chamber was filled with 800 μ l RPMI-1640 with 20% FBS. The cells were allowed to invade for 24 h in 5% CO₂ at 37°C. The migrated cells on the lower surface were fixed in methanol for 10 min at room temperature, then stained with 0.1% crystal violet for 20 min and washed with PBS three times for 5 min each time. The cells that had migrated to the lower surface were counted under a light microscope in five fields at a magnification of $\times 200$. The results are expressed as the ratio of the mean number of invasive cells with treatment relative to the controls.

Statistical Analysis

Data were presented as the mean \pm standard error of mean (SEM). Statistical significance was analyzed by Mann-Whitney test using Prism5 (GraphPad, San Diego, CA, USA). Significant p-values are indicated in figures for the following ranges: NS, no significance; *, P < 0.05; **, P < 0.01; ***, P < 0.001; ****, P < 0.0001.

RESULTS

$\gamma\delta$ T Cells Were Enriched in Uterus Compared to Blood and Most of Uterine $\gamma\delta$ T Cells Distributed in Endometrium

To rule out the influence of peripheral blood $\gamma\delta$ T cells, female mice were intravenously injected (i.v.) with anti-CD45-PE antibody to label the circulating T cells, collected orbital blood 5 min later and removed the blood in tissues by cardiac perfusion (Figure 1A). The uterus was collected and the cells were prepared and checked for CD45⁺ cells compared with blood by flow cytometry. The results (Figure 1B) showed that 99% T cells in blood were labeled with CD45-antibody and only 1% of the T cells in uterus were labeled with CD45-antibody after cardiac perfusion. Approximate 6.2% T cells in uterus were CD45-antibody labeled without cardiac perfusion. The experiment proved that cardiac perfusion could effectively remove the blood in uterus and rule out the influence of blood T cells. We then compared the percentage of $\gamma\delta$ T cells in uterus and blood T lymphocytes. The result clearly showed that the percentages of $\gamma\delta$ T cells in uterus (34.0%) was significantly higher than those in blood (1.78%, p<0.0001) (Figure 1C). Similarly, the percentages of $\gamma\delta$ T cells in human endometrium was much higher than those in peripheral blood (Figure 1D). HE staining was used to show the structure of endometrium, myometrium and perimetrium (Figure 1E). To find out the distribution of $\gamma\delta$ T cells in uterus tissues, immunofluorescence analysis of paraffin uterus sections confirmed that most $\gamma\delta$ T cells including T cells in uterus

distributed in endometrium, and a small part were distributed in the myometrium, but not in perimetrium (Figure 1F). These results indicated that $\gamma\delta$ T cells were enriched in uterus and most of uterine $\gamma\delta$ T cells distributed in endometrium.

The Majority of $\gamma\delta$ T Cells in Uterus Are Tissue Resident Memory Cells

To compare the phenotypes between $\gamma\delta$ T cells from uterus and blood, we analyzed the expression of memory and residence markers by FACS after cell surface staining. The results showed that $\gamma\delta$ T cells from uterus expressed significantly higher levels of CD44, CD27 and CD127 compared to $\gamma\delta$ T cells from blood. Moreover, $\gamma\delta$ T cells from uterus expressed significantly lower levels of CD62L (9.6%) compared to those from blood ($p < 0.0001$). In addition, we found that $\gamma\delta$ T cells from uterus expressed significantly higher levels of CD69 than $\gamma\delta$ T cells from blood ($p < 0.0001$), but expressed lower levels of CD103 than $\gamma\delta$ T cells from blood ($p < 0.01$) (Figures 2A, B). Taken together, our results demonstrated that the majority of $\gamma\delta$ T cells in uterus were tissue resident memory $\gamma\delta$ T cells.

$\gamma\delta$ T Cells From Uterus Expressed Higher Levels of CCR6 and Lower Levels of CXCR3, CCR7 Compared to $\gamma\delta$ T Cells From Blood

In order to gain insight into the mechanisms of $\gamma\delta$ T cells recruitment to the uterus, the expression of chemokine receptors on $\gamma\delta$ T cells from uterus and blood were assessed by FACS. Results showed that $\gamma\delta$ T cells from uterus expressed higher levels of CCR6 but expressed lower levels of CXCR3 and CCR7 than $\gamma\delta$ T cells from blood (Figures 3A, B). There was no difference in the expression of CX3CR1, CCR5, CXCR5 on $\gamma\delta$ T cells from uterus and blood (Figures 3A, B). In addition, uterus expressed higher levels of CCL20 than in blood ($p < 0.0001$) (Figures 3C, D). Overall, our results indicated that the CCR6-CCL20 chemokine axis might contribute to the selective migration of $\gamma\delta$ T cells into uterus.

Tissue Resident $\gamma\delta$ T Cells in Uterus Expressed High Levels of IL-17 But Not IFN- γ

To evaluate the expression of IL-17, IFN- γ and TNF- α from $\gamma\delta$ T cells, the mononuclear cells from uterus and blood were stimulated with or without PMA plus ionomycin for 6 h in the presence of BFA. The results from FACS data demonstrated that higher percentages of $\gamma\delta$ T cells from uterus expressed IL-17 (31.7%) compared with $\gamma\delta$ T cells from blood (5.6%, $p < 0.0001$), but lower levels of IFN- γ compared to blood ($p < 0.0001$). Moreover, there was no difference on the expression of TNF- α (Figure 4A). In addition, our study further demonstrated that the proportion of $\gamma\delta$ T cells in uterus was equal to that of CD4⁺T cells. However, the expression of IL-17 by $\gamma\delta$ T cells (31.7%) was around three times more than that of CD4⁺T cells (11.7%) (Figure 4B). Consistent with results in mouse, $\gamma\delta$ T cells from human endometrium also expressed significantly higher levels of IL-17 compared to $\gamma\delta$ T cells from peripheral blood (Figure 4C). To examine the co-expression of IL-17, IFN- γ , and TNF- α between $\gamma\delta$ T cells from uterus and blood, we gated on $\gamma\delta$ T cells and the results showed that high percentages of uterine $\gamma\delta$ T cells expressed IL-17 and IL-17⁺ $\gamma\delta$ T cells did not co-express IFN- γ but some IL-17⁺ $\gamma\delta$ T cells co-expressed TNF- α . High percentages of blood $\gamma\delta$ T cells expressed IFN- γ and did not co-express with IL-17. As for the co-expression of IFN- γ and TNF- α , a large amount of TNF- α ⁺ $\gamma\delta$ T cells co-expressed IFN- γ both by uterus and blood (Figure 4D). Gated on uterine CD3⁺ $\gamma\delta$ T⁺CD44⁺ cells, the results showed that the majority of $\gamma\delta$ T cells in uterus were CD69⁺CD103⁺, CD69⁺CD103⁻, or CD69⁻CD103⁺ (Figure 4E). Results in human also showed that most $\gamma\delta$ T cells in human endometrium were tissue resident memory T cells, highly expressing CD45RO, CD69, and CD103 (Figure 4F). To confirm the expression of cytokines by CD69⁺CD103⁺, CD69⁺CD103⁻, CD69⁻CD103⁺ and CD69⁻CD103⁻ cells, we gated on CD3⁺ $\gamma\delta$ T⁺CD44⁺ cells and analyzed the expression of IL-17 and IFN- γ by FACS. Our results demonstrated that subsets of tissue resident $\gamma\delta$ T cells (CD69⁺CD103⁺, CD69⁺CD103⁻ and CD69⁻CD103⁺) expressed higher percentages of IL-17 and lower

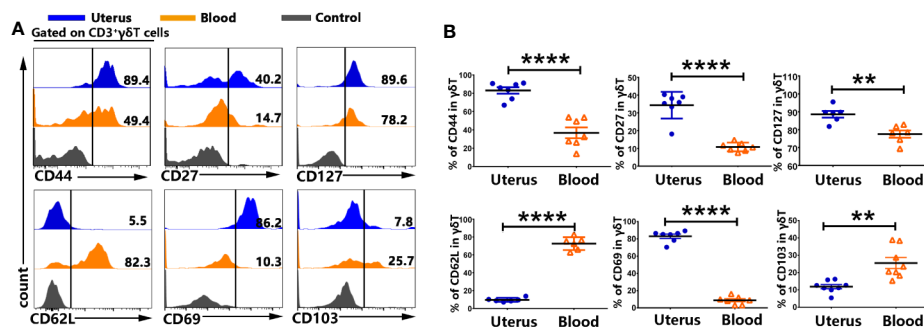


FIGURE 2 | $\gamma\delta$ T cells from uterus expressed memory and residence markers. The mononuclear cells from uterus and blood were prepared and stained with anti-CD3, $\gamma\delta$ T, CD44, CD27, CD127, CD62L, CD69, and CD103, and assessed by FACS. Gated on CD3⁺ $\gamma\delta$ T cells from uterus (blue) and blood (orange), compared to the control (gray), the representative graphs for the expression of CD44, CD27, CD127, CD62L, CD69, and CD103 were shown (A). Statistical results (B) from 6-9 independent experiments with six mice in each experiment were shown as mean \pm SEM, and the statistical significance was determined with the Mann-Whitney U test. ** < 0.01 , **** $p < 0.0001$.

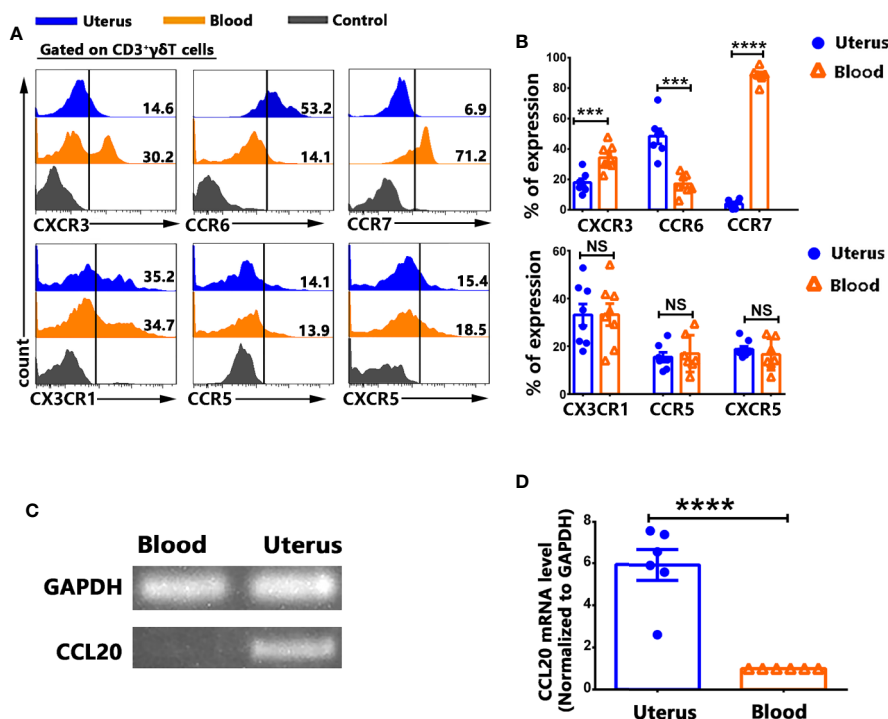


FIGURE 3 | $\gamma\delta$ T cells from uterus expressed higher levels of CCR6 and lower levels of CXCR3, CCR7 than $\gamma\delta$ T cells from blood. Uterus and blood mononuclear cells were stained with anti-CD3, $\gamma\delta$ T, CXCR3, CCR6, CCR7, CX3CR1, CCR5, CXCR5, and analyzed by flow cytometry. The cells were gated on CD3⁺ $\gamma\delta$ T⁺ and the representative histogram graph for the expression of CXCR3, CCR6, CCR7, CX3CR1, CCR5, and CXCR5 were shown (A). Statistical results (B) were from 6–8 independent experiments with six mice in each experiment. The levels of CCL20 and GAPDH mRNA in uterus and in blood were determined by RT-PCR (C), and the ratio of CCL20 to GAPDH were quantified by densitometry (D). Data were shown as mean \pm SEM. The statistical significance was determined with the Mann-Whitney U test. NS, no significance, *** P < 0.001, **** P < 0.0001.

percentages of IFN- γ than CD69⁻CD103⁻ $\gamma\delta$ T cells in uterus (Figures 4G, H). Taken together, these data indicated that tissue resident $\gamma\delta$ T cells expressed higher percentages of IL-17 than circulating $\gamma\delta$ T cells in uterus.

$\gamma\delta$ T Cells From Uterus Expressed High Level of Cytotoxic Molecules Which Co-Expressed IFN- γ but not IL-17

The expression of cytotoxic molecules on $\gamma\delta$ T cells from uterus and blood were examined by FACS. Results showed that $\gamma\delta$ T cells from uterus expressed higher levels of GranzymeB (27.3%) than $\gamma\delta$ T cells from blood (10.9%, p <0.001), and higher percentages of CD107a (28.9%) than $\gamma\delta$ T cells from blood (5.9%, p <0.001) (Figures 5A, B). By contrast, there was no difference in the expression of NKG2D (data not shown). In addition, the results showed that GranzymeB⁺ and CD107a⁺ $\gamma\delta$ T cells in uterus co-expressed IFN- γ but not IL-17 (Figures 5C, D).

Transcription Factor ROR γ t but Not pSTAT3 Modulated the Expression of IL-17 in Uterus

To investigate the possible mechanism of the expression of IL-17 by $\gamma\delta$ T cells in uterus, the mononuclear cells from uterus and blood

were stimulated with or without PMA plus ionomycin for 6 h in the presence of BFA and stained with mAbs. The results demonstrated that 61.0% of $\gamma\delta$ T cells in uterus were CD25⁺ but CD25⁺ $\gamma\delta$ T cells did not co-express Foxp3 (Figure 6A). In addition, IL-17 was mainly expressed by CD25⁺ $\gamma\delta$ T cells in uterus (Figure 6B). The data showed that 90.0% of $\gamma\delta$ T cells in uterus and 12.7% of $\gamma\delta$ T cells in blood expressed transcription factor ROR γ t (Figure 6C). In contrary to ROR γ t, $\gamma\delta$ T cells in uterus expressed lower percentages of pSTAT3 than did $\gamma\delta$ T cells in blood (p <0.0001) (Figure 6D). Gated on uterine $\gamma\delta$ T cells, we found that IL-17 was mainly expressed by ROR γ t⁺ $\gamma\delta$ T cells (Figure 6E). Those results indicated that $\gamma\delta$ T cells in uterus were highly activated and expressed transcription factor ROR γ t, which might be the reason why $\gamma\delta$ T cells in uterus could express IL-17.

rmIL-17 Promoted the Invasion of Murine Trophocytes *In Vitro*

To determine the function of IL-17 on pregnancy, murine trophocytes were isolated at pregnancy day 13.5. We investigated the invasion of trophocytes after treatment with different concentration of rmIL-17. Importantly, the results showed that rmIL-17 could promote the invasion of trophocytes in a dose-dependent manner (Figures 7A, B).

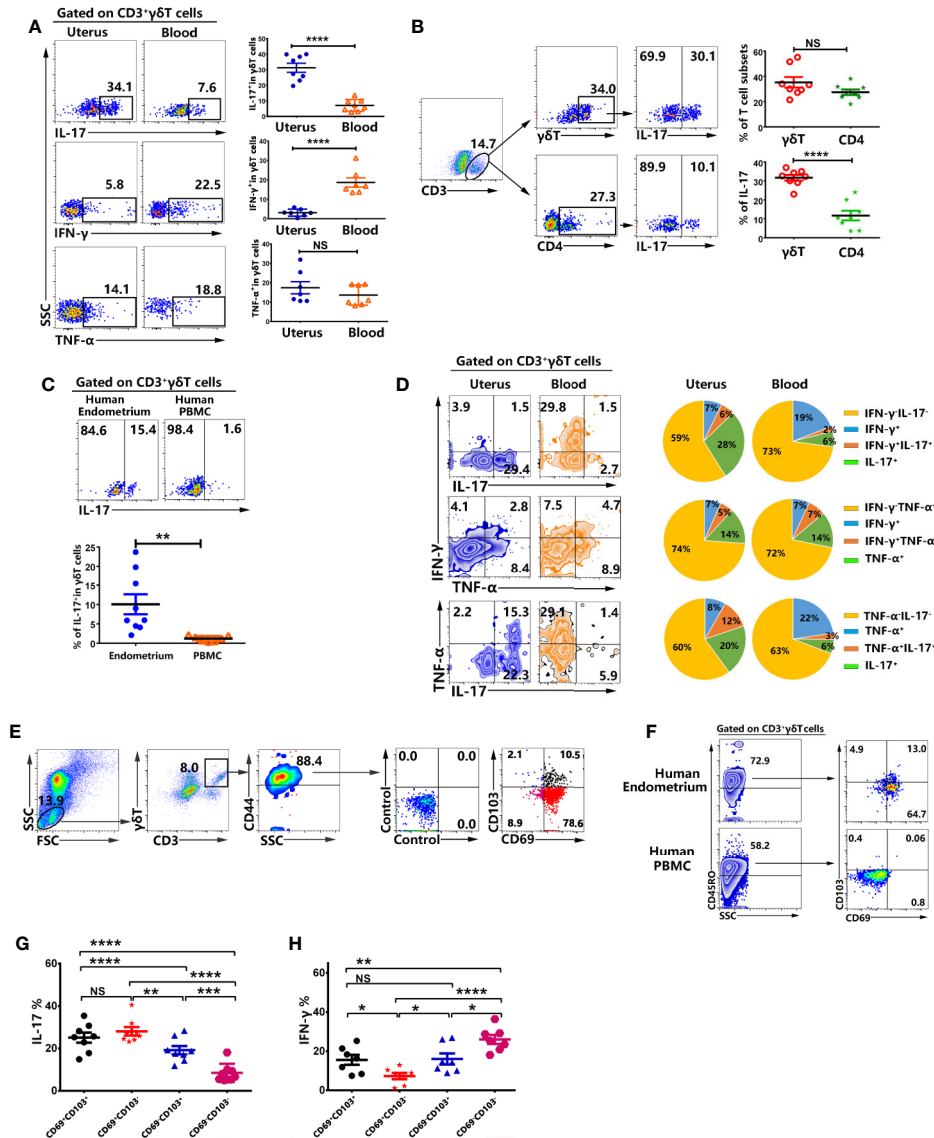


FIGURE 4 | Tissue resident memory $\gamma\delta$ T cells from uterus expressed high percentages of IL-17 but less expression of IFN- γ . The mononuclear cells from uterus and blood were stimulated with or without PMA plus ionomycin in the presence of BFA for 6 h and analyzed by FACS. The representative graph and statistical results from 7-8 independent experiments with six mice in each experiment for the expression IL-17, IFN- γ and TNF- α in $\gamma\delta$ T cells were shown (A). The representative graph and statistical results for the expression of IL-17 in $\gamma\delta$ T and CD4⁺T cells were shown (B). The representative graph and statistical results for the expression of IL-17 in $\gamma\delta$ T cells from human endometrium and peripheral blood were shown (C). The co-expression of IL-17, IFN- γ and TNF- α was analyzed by FACS. The representative graph and pie chat (n=6) of IL-17, IFN- γ and TNF- α single and co-expression were shown (D). Gated on uterine CD3⁺ $\gamma\delta$ T⁺CD44⁺ cells, the representative graph of the expression of CD69 and CD103 were shown (E). Gated on CD3⁺ $\gamma\delta$ T⁺ cells, the representative graph of the expression of CD45RO, CD69, and CD103 in human endometrium and peripheral blood were shown (F). The expression of IL-17 (G) and IFN- γ (H) on CD69⁺CD103⁺, CD69⁺CD103⁻, CD69⁻CD103⁺, CD69⁻CD103⁻ $\gamma\delta$ T cells from uterus was analyzed by FACS. The data were shown as mean \pm SEM and statistical significance was determined with the Mann-Whitney U test. NS, no significance, *P < 0.05, **P < 0.01, ***P < 0.001 and ****P < 0.0001.

The enhancement of IL-17 in trophocytes invasion prompted us to confirm whether there was significant difference in non-pregnant and pregnant uterus. Similar to the results from non-pregnant mice, $\gamma\delta$ T cells were enriched in pregnancy uterus and highly expressed IL-17 but did not express IFN- γ (Figure 7C). $\gamma\delta$ T cells in pregnancy uterus also highly expressed memory marker CD44, residence marker CD69, activation

marker CD25 and transcription factor ROR γ t, but expressed less CD103 (Figure 7D).

DISCUSSION

$\gamma\delta$ T cells are programmed into two main effector subsets that produce either interferon γ (IFN- γ) or interleukin 17 (IL-17)

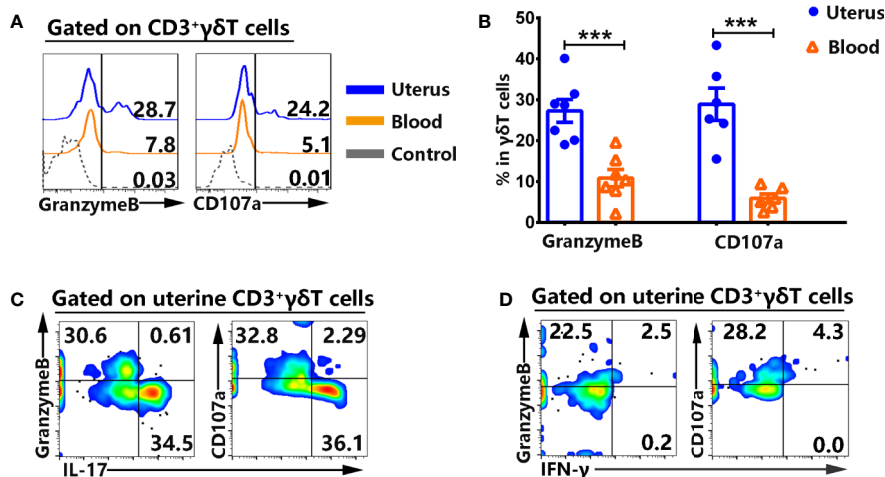


FIGURE 5 | $\gamma\delta$ T cells from uterus highly expressed cytotoxic molecules and did not co-express IL-17. Uterus and blood mononuclear cells were stained, gated on CD3⁺ $\gamma\delta$ T⁺ cells and analyzed by flow cytometry for the expression of cytotoxic molecules. The expression of GranzymeB and CD107a was assessed after intracellular and cell surface staining by FACS. The representative histogram graph (A) and statistical results (B) from 6-7 independent experiments with six mice in each experiment were shown. The mononuclear cells from uterus were stimulated with or without PMA plus ionomycin in the presence of BFA for 6 h and analyzed by FACS for the co-expression of IL-17, IFN- γ with GranzymeB and CD107a. The graphs were representative of six independent experiments (C, D). The data were shown as mean \pm SEM. The statistical significance was determined with the Mann-Whitney U test. ***P < 0.001.

depend on the strength of the signal they encountered in fetal thymus (5, 6). These fetal-derived $\gamma\delta$ T cells are typically innate-like and seed peripheral tissues where they maintain for life. IL-17-producing $\gamma\delta$ T cells ($\gamma\delta$ 17 T cells) preferentially migrate to the genital tract, dermis and lungs. Fetal-derived $\gamma\delta$ 17 T cells are characterized as ROR γ t⁺CCR6⁺CD25⁺CD27⁻. $\gamma\delta$ 17 T cells are known to constitute a major source of IL-17 in various non-lymphoid tissues and interestingly contribute to disease development and normal tissue physiology in different tissues (8, 9, 24). $\gamma\delta$ 17 T cells are found to be widely distributed in maternal-fetal interface during pregnancy as well as in non-pregnant uterus (4). However, the role of $\gamma\delta$ 17 T cells in sustaining normal pregnancy remains unknown. In addition, there are emerging data point to a pathogenic role of IL-17 in pre-eclampsia, pre-term birth and miscarriage (25–27). It is urgent to comprehensively study the immunological characteristics and function of $\gamma\delta$ 17 T cells in pregnancy and non-pregnant uterus.

The $\gamma\delta$ T cells reached the 34% of T cells and it was equal to the proportion of CD4⁺T cells in uterus. By contrast, $\gamma\delta$ T cells in peripheral blood were much sparser than in uterus. Our study demonstrated that most of $\gamma\delta$ T cells and T cells in uterus were distributed in endometrium, and a small part were distributed in the myometrium, but not in perimetrium. The tissue localization of $\gamma\delta$ T cells within endometrium provided an ideal environment for both protecting against infections and regulating immune rejection response to allogenic fetus during pregnancy. $\gamma\delta$ T cells in uterus significantly expressed memory marker CD44 and expressed minimal CD62L and CCR7, indicating that they lack a capacity to adhere to HEV and hence they cannot circulate between peripheral tissues and lymphoid organs. Although $\gamma\delta$ T cells in uterus expressed higher levels of CD27 than $\gamma\delta$ T cells in

blood, consistently with the study in adipose (8), $\gamma\delta$ 17 T cells were CD27⁻ and IL-17 did not co-express with CD27 (data not shown). CD69 and CD103 are markers commonly used to identify CD8⁺ or CD4⁺T_{RM} cells. However, studies in lungs after *Bordetella pertussis* and *Streptococcus pneumoniae* infection showed that tissue resident memory $\gamma\delta$ T cells expressed CD69 and some co-expressed CD103, supporting the conclusion that CD69 and/or CD103 expression were also surface markers of tissue resident $\gamma\delta$ T cells (17, 28). Our result indicated that a considerable fraction of $\gamma\delta$ T cells in uterus expressed CD69 and some also co-expressed with CD103. Taken together, the majority of $\gamma\delta$ T cells in uterus were CD44⁺CD62L⁻CCR7⁻CD69⁺ $\gamma\delta$ T cells and displayed a tissue resident memory $\gamma\delta$ T cell phenotype.

It is well known that chemokines and their receptors act together with adhesion molecules to control the migration of lymphocytes to lymphoid and non-lymphoid tissues. Our results demonstrated that most of $\gamma\delta$ T cells in uterus significantly expressed CCR6 but less expressed CXCR3. Consistently with the high expression of CCR6, uterus expressed higher levels of CCL20 than in blood which is the only ligand to CCR6. It is widely recognized that CCR6 expression was clearly associated with the production of IL-17 in CD4⁺T cells and $\gamma\delta$ T cells (29, 30). Furthermore, IL-17-producing $\gamma\delta$ T cells were dependent on CCR6- recruitment into the injured liver and inflamed skin (31, 32). At least in part, CCR6-CCL20 chemokine axis is essential for uterine $\gamma\delta$ T cells to produce IL-17 and recruit into uterus. $\gamma\delta$ T cells in uterus expressed significantly higher levels of cytotoxic molecules GranzymeB and CD107a compared to $\gamma\delta$ T cells in blood. In addition, Granzyme B⁺ and CD107a⁺ $\gamma\delta$ T cells did not express IL-17. It is possible that there are two $\gamma\delta$ T cell subsets

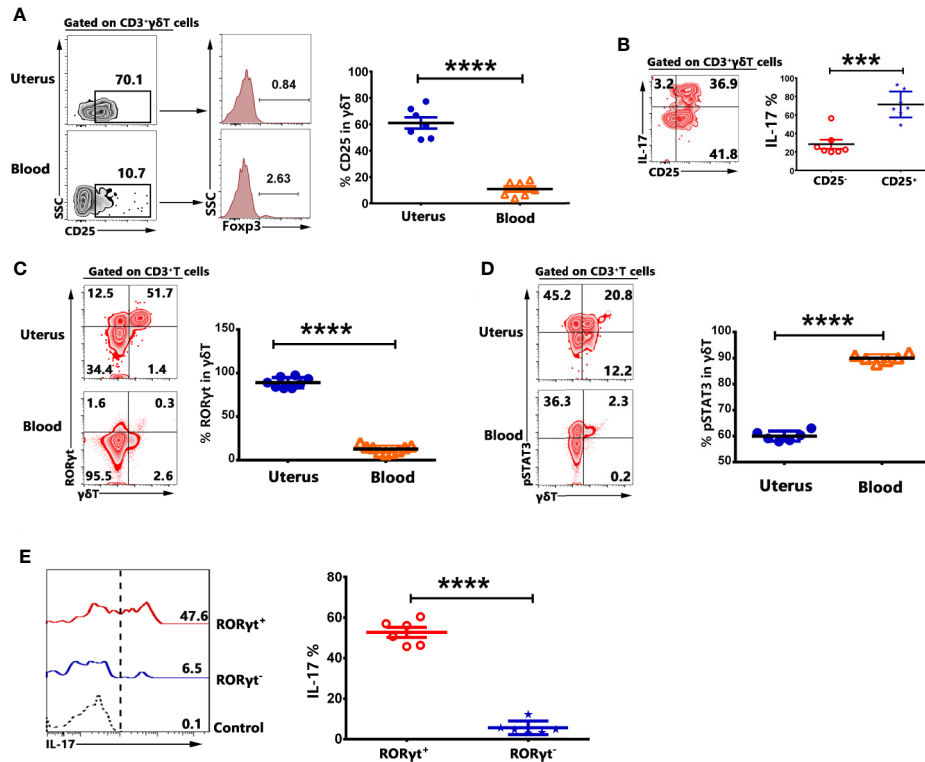


FIGURE 6 | $\gamma\delta$ T cells in uterus expressed CD25 and transcription factors ROR γ t. The expression of CD25 and transcription factor Foxp3 on $\gamma\delta$ T cells from uterus and blood were assessed by FACS. Gated on $\gamma\delta$ T cells, the representative graph and statistical results for the expression of CD25 and Foxp3 were shown (A). The mononuclear cells from uterus and blood were stimulated with or without PMA plus ionomycin in the presence of BFA for 6 h. The expression of IL-17 by CD25⁺ and CD25⁻ $\gamma\delta$ T cells was analyzed and the representative graph as well as summary data were shown (B). The expression of ROR γ t (C) and pSTAT3 (D) on $\gamma\delta$ T cells from uterus and blood was shown. The expression of IL-17 by ROR γ t⁺ and ROR γ t⁻ $\gamma\delta$ T cells was analyzed and the representative graph and summary data were shown (E). Data were expressed as the mean \pm SEM, and each dot represented one independent experiment with six mice. The statistical significance was determined with the Mann-Whitney U test. ***P < 0.001 and ****P < 0.0001.

with different functions in uterus, one is IL-17-producing $\gamma\delta$ T cells another one is cytotoxic $\gamma\delta$ T cells.

Over the past decades, IL-17 has received much attention for its pro-inflammatory role in autoimmune disease. However, a substantial body of research demonstrated that IL-17 had important context- and tissue-dependent roles in maintaining health during response to injury, physiological stress and infection (21, 33). Th17 cells is traditional considered to be the main source of IL-17. In recent years, studies have found that $\gamma\delta$ T cells constituted a major source of IL-17 in various non-lymphoid tissues (4, 8, 34). Our results indicated that after polyclonal activation, $\gamma\delta$ T cells in uterus expressed significantly higher levels of IL-17, lower levels of IFN- γ and equal levels of TNF- α compared to $\gamma\delta$ T cells in blood. Tissue resident $\gamma\delta$ T cells (CD69⁺CD103⁺, CD69⁺CD103⁻, and CD69⁻CD103⁺) in uterus expressed higher percentages of IL-17 than circulating $\gamma\delta$ T cells (CD69⁻CD103⁻). Transcription factors ROR γ t regulates the differentiation of $\gamma\delta$ 17 T cells and the production of IL-17. IL-6-STAT3 activation is crucial to turn on ROR γ t expression and development of Th17 T cells (35–37). Our results indicated that 70% of $\gamma\delta$ T cells in uterus expressed CD25 but did not express Foxp3, indicating CD25⁺ $\gamma\delta$ T cells in uterus were not Foxp3⁺ $\gamma\delta$

Treg cells which were regulatory $\gamma\delta$ T cells and reported to be present in human PBMC and tumor infiltrating leukocytes(TIL) (38–41). In addition, nearly 90% of $\gamma\delta$ T cells in uterus expressed ROR γ t and 50% of ROR γ t⁺ $\gamma\delta$ T cells expressed IL-17 but expressed lower percentages of pSTAT3 than $\gamma\delta$ T cells in blood. These data indicated that $\gamma\delta$ T cells were the major source of IL-17 and transcription factor ROR γ t but not pSTAT3 modulated the production of IL-17 in uterus.

It was reported that human trophocytes expressed high levels of IL-17 receptor and by secreting IL-17 Th17 cells could promote invasion of human first-trimester trophocytes (42). Clearly, our results confirmed that rmIL-17 could also promote the invasion of murine trophocytes *in vitro*. In addition, our study demonstrated that $\gamma\delta$ T were enriched in pregnancy uterus and there were no significant difference in cytokine production, memory and activation markers between non-pregnant and pregnant uterus. Taken together, our study for the first time showed that tissue resident memory $\gamma\delta$ T cells were enriched in uterus and expressed IL-17 but not IFN- γ , which could promote the invasion of trophocytes. In addition, $\gamma\delta$ T cells in uterus were highly activated and fully expressed transcription factor ROR γ t. These findings not only enrich knowledge on the immunological characteristics of $\gamma\delta$ T

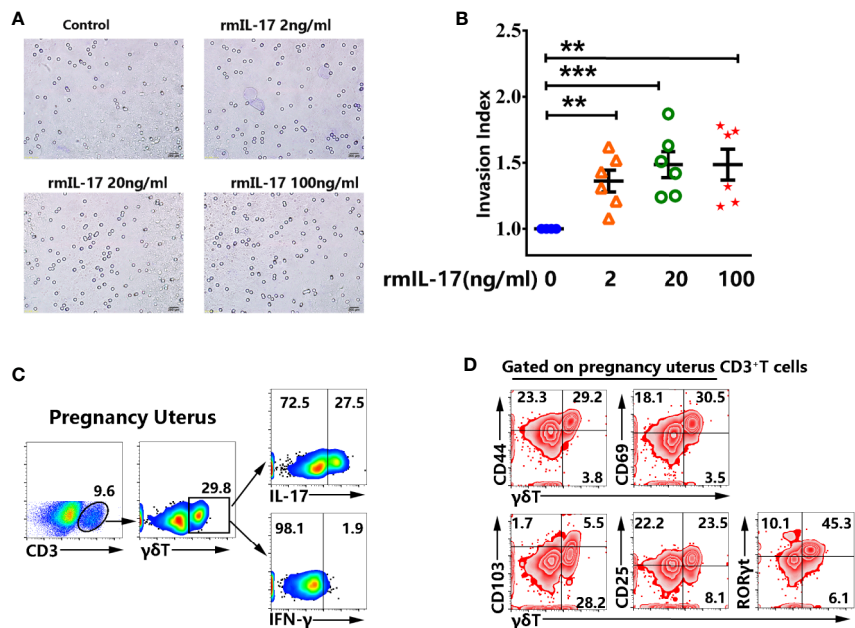


FIGURE 7 | rmlL-17 promoted the invasion of murine trophocytes *in vitro*. The isolated trophocytes were cultured with different concentration of rmlL-17 (0, 2, 20, 100 ng/ml) at the upper chamber. The trophocytes migrated to the lower surface were photographed and the representative graphs were shown ($\times 200$) (A). The statistical results (B) were expressed the ratio of the mean number of invasive cells with treatment related to the controls. Data were expressed as the mean \pm SEM. The mononuclear cells from pregnancy uterus were stimulated with or without PMA plus ionomycin in the presence of BFA for 6 h. The representative graph for the proportion of $\gamma\delta$ T cells from pregnant uterus and production of IL-17 and IFN- γ were shown (C). Gated on CD3⁺T cells in pregnant uterus, the representative graph for the expression of CD44, CD69, CD103, CD25, ROR γ t in $\gamma\delta$ T cells were shown (D). Data were representative of three independent experiments with 6 mice per group. The statistical significance was determined with the Mann-Whitney U test. **P < 0.01, ***P < 0.001.

cells, but also lay the foundation for future research on uterine $\gamma\delta$ T cells in pregnancy and autoimmune disease.

DATA AVAILABILITY STATEMENT

The original contributions presented in the study are included in the article/supplementary materials. Further inquiries can be directed to the corresponding authors.

ETHICS STATEMENT

The animal study was reviewed and approved by the Animal Ethics Committee, Sun Yat-sen University.

REFERENCES

- Marc B, Rebecca LO, Willi KB. $\gamma\delta$ T cell effector functions: a blend of innate programming and acquired plasticity. *Nat Rev Immunol* (2010) 10:467–78. doi: 10.1038/nri2781
- Elizabeth EG, Kazuhiro S, Jason GC. Cutting edge: Identification of a motile IL-17- producing gammadelta T cell population in the dermis. *J Immunol* (2011) 186:6091–5. doi: 10.4049/jimmunol.1100427
- Min C, Shilian H. Lung-resident $\gamma\delta$ T cells and their roles in lung diseases. *Immunology* (2017) 151:375–84. doi: 10.1111/imm.12764

AUTHOR CONTRIBUTIONS

SK performed most experiments and analyzed data with the support from CW. QW performed flow cytometry on uterus. JH performed immunofluorescence staining. BY and CL contributed to scientific planning. PC and CW oversaw and designed the study. SK and CW wrote the manuscript. All authors contributed to the article and approved the submitted version.

FUNDING

This study was supported by the National Natural Science Foundation of China (Grant No. 81971556).

- Gabriela VP, Theresa MC, Jessica S, Erin LL, Kerrilyn RD, Sarah AR, et al. The majority of murine $\gamma\delta$ T cells at the maternal-fetal interface in pregnancy produce IL-17. *Immunol Cell Biol* (2016) 94:623–30. doi: 10.1038/icc.2016.48
- Kirk DC, Xiaoqin S, Sunny S, Luke L, Sawsan Y, Sho Y, et al. Thymic selection determines gammadelta T cell effector fate: antigen-naive cells make interleukin-17 and antigen-experienced cells make interferon gamma. *Immunity* (2008) 29:90–100. doi: 10.1016/j.immuni
- Miguel MR, Julie CR, Ana RG, Natacha GS, Ana P, Daniel JP, et al. TCR signal strength controls thymic differentiation of discrete proinflammatory $\gamma\delta$ T cell subsets. *Nat Immunol* (2016) 17:721–7. doi: 10.1038/ni.3424

7. Kathleen WD, Prasanna J. $\gamma\delta$ T Cells in antimalarial immunity: new insights into their diverse functions in protection and tolerance. *Front Immunol* (2018) 9:2445. doi: 10.3389/fimmu.2018.02445
8. Ayano CK, Shani TG, Nelson ML, Moto S, Danielle D, Hui-FK, et al. $\gamma\delta$ T cells producing interleukin-17A regulate adipose regulatory T cell homeostasis and thermogenesis. *Nat Immunol* (2018) 19:464–74. doi: 10.1038/s41590-018-0094-2
9. Miguel R, Helena CB, Mariana TF, Paula AP, Tommy R, Cátia S, et al. Meningeal $\gamma\delta$ T cell-derived IL-17 controls synaptic plasticity and short-term memory. *Sci Immunol* (2019) 4:eay5199. doi: 10.1126/sciimmunol.aay5199
10. Pin W, Dang W, Chao N, Jun Y, WuZhen C, GuoMing H, et al. $\gamma\delta$ T17 cells promote the accumulation and expansion of myeloid-derived suppressor cells in human colorectal cancer. *Immunity* (2014) 40:785–800. doi: 10.1016/j.immuni.2014.03.013
11. Caroline ES, Stephen JL, Cheryl MS, Corinna F, Ed CL, Kingston HG. Interleukin-1 and IL-23 induce innate IL-17 production from gd T Cells, amplifying Th17 responses and autoimmunity. *Immunity* (2009) 31:331–41. doi: 10.1016/j.immuni.2009.08.001
12. Yihua C, Xiaoyan S, Chuanlin D, Chunjian Q, Kejia L, Xia L, et al. Pivotal role of dermal IL-17-producing $\gamma\delta$ T cells in skin inflammation. *Immunity* (2011) 35:596–610. doi: 10.1016/j.immuni
13. Federica S, Danielle L, Reinhold F, Martin L, Antonio L. Two subsets of memory T lymphocytes with distinct homing potentials and effector functions. *Nature* (1999) 401:708–12. doi: 10.1038/44385
14. David M, Daniel C, Vaiva V, John W, Jaikumar D, Rama A, et al. Dynamic T cell migration program provides resident memory within intestinal epithelium. *J Exp Med* (2010) 207:553–64. doi: 10.1084/jem.20090858
15. Linda MW, Amanda WD, Michael JB. Memory T cells persisting within the brain after local infection show functional adaptations to their tissue of residence. *Proc Natl Acad Sci USA* (2010) 107:17872–9. doi: 10.1073/pnas.1010201107
16. Thomas G, Umaimainthan P, David CT, Sammy B. Tissue-resident memory T cells in tissue homeostasis, persistent infection, and cancer surveillance. *Immunol Rev* (2018) 283:54–76. doi: 10.1111/immr.12650
17. Alicia M, Mieszko MW, Mathilde R, Kingston HG. IL-17-Producing innate and pathogen-specific tissue resident memory $\gamma\delta$ T cells expand in the lungs of bordetella pertussis- infected mice. *J Immunol* (2017) 198:363–74. doi: 10.4049/jimmunol.1601024
18. Stuart H, Carrie RW, Martin SD, Sofya AK, Hannah CJ, Dmitriy MC, et al. Human liver infiltrating $\gamma\delta$ T cells are composed of clonally expanded circulating and tissue-resident populations. *J Hepatol* (2018) 69:654–65. doi: 10.1016/j.jhep.2018.05.007
19. Mincheva-Nilsson L, Hammarström S, Hammarström ML. Human decidual leukocytes from early pregnancy contain high numbers of gamma delta⁺ cells and show selective down-regulation of alloreactivity. *J Immunol* (1992) 149:2203–11.
20. Heyborne KD, Cranfill RL, Carding SR, Born WK, O'Brien RL. Characterization of gammadelta T lymphocytes at the maternal-fetal interface. *J Immunol* (1992) 149:2872–8.
21. Mandy JM, Daniel JC, Sarah LG. The IL-17 family of cytokines in health and disease. *Immunity* (2019) 50:892–906. doi: 10.1016/j.immuni
22. Gil A, Elaine VL, Fu-DS, Antonio LC. IL-17 promotes murine lupus. *J Immunol* (2014) 193:540–3. doi: 10.4049/jimmunol.1400931
23. Li J, Shen J, Lao S, Li X, Liu J, Wu C. Mycobacterium tuberculosis RV3615c is a highly immunodominant antigen and specifically induces potent Th1-type immune responses in tuberculosis pleurisy. *Clin Sci* (2017) 131:1859–76. doi: 10.1042/CS20170205
24. Takehito O, Kazuo O, Tomoki N, Takeshi N, Shohei H, Yoichiro I, et al. IL-17-producing $\gamma\delta$ T cells enhance bone regeneration. *Nat Commun* (2016) 7:10928. doi: 10.1038/ncomms10928
25. Brigitte SN, Michael JP, Roma K, Luise R, Erhua Z, Barbara F, et al. Systemic increase in the ratio between Foxp3⁺ and IL-17-producing CD4⁺ T cells in healthy pregnancy but not in preeclampsia. *J Immunol* (2009) 183:7023–30. doi: 10.4049/jimmunol.0901154
26. Wen JW, Cui FH, Yi L, Guang JY, Shi HB, Li HQ, et al. Increased prevalence of T helper 17 (Th17) cells in peripheral blood and decidua in unexplained recurrent spontaneous abortion patients. *J Reprod Immunol* (2010) 84:164–70. doi: 10.1016/j.jri
27. Mika I, Akitoshi N, Takao H, Motonori O, Nguyen D, Shihomi I, et al. A role for IL-17 in induction of an inflammation at the fetomaternal interface in preterm labour. *J Reprod Immunol* (2010) 8:75–85. doi: 10.1016/j.jri.2009.09.005
28. Alun CK, Darren JN, Simon RC, Paul MK. Evidence for the involvement of lung-specific gammadelta T cell subsets in local responses to Streptococcus pneumoniae infection. *Eur J Immunol* (2007) 37:3404–13. doi: 10.1002/eji.200737216
29. Eva VA, Laura R, Jens G, David J, Marco G, Antonio L, et al. Surface phenotype and antigenic specificity of human interleukin 17-producing T helper memory cells. *Nat Immunol* (2007) 8:639–46. doi: 10.1038/ni1467
30. Tomotaka M, Tomonori T, Sam TH. Epidermal CCR6⁺ $\gamma\delta$ T cells are major producers of IL-22 and IL-17 in a murine model of psoriasis form dermatitis. *J Immunol* (2011) 187:5026–31. doi: 10.4049/jimmunol.1101817
31. Linda H, Jörg MB, Olivier G, Henning WZ, Nikolaus G, Sebastian H, et al. Chemokine receptor CCR6-dependent accumulation of $\gamma\delta$ T cells in injured liver restricts hepatic inflammation and fibrosis. *Hepatology* (2014) 59:630–42. doi: 10.1002/hep.26697
32. James JC, Karen E, Linda SE, Jeffrey PM, Dale N, Yu W, et al. IL-17-Secreting $\gamma\delta$ T cells are completely dependent upon CCR6 for homing to inflamed skin. *J Immunol* (2017) 199:3129–36. doi: 10.4049/jimmunol
33. Jacob SL, Cristina MT, Barbara JS, Muhammet FG, Corinne C, Yi C, et al. Interleukin-23-independent IL-17 production regulates intestinal epithelial permeability. *Immunity* (2015) 43:727–38. doi: 10.1016/j.immuni.2015.09.003
34. Nital S, Ben R, Lai GN, Jim Q, Rachel P, Lois LC, et al. Cutaneous immunosurveillance by self-renewing dermal gammadelta T cells. *J Exp Med* (2011) 208:505–18. doi: 10.1084/jem.20101824
35. Ivalyo II, Brent SM, Liang Z, Carlos ET, Alice L, Juan JL, et al. The orphan nuclear receptor ROR γ directs the differentiation program of proinflammatory IL-17⁺T helper cells. *Cell* (2006) 126:1121–33. doi: 10.1016/j.cell.2006.07.035
36. Lai W, Arian L, Kevin ME, John JO. IL-21 is produced by Th17 cells and drives IL-17 production in a STAT3-dependent manner. *J Biol Chem* (2007) 282:34605–10. doi: 10.1074/jbc.M705100200
37. Daniel JC, Cristina MT. Innate IL-17-producing cells: the sentinels of the immune system. *Nat Rev Immunol* (2010) 10:479–89. doi: 10.1038/nri2800
38. Rita C, Chiara A, Marianne W, Alessandra S, Federico M, Angelo M, et al. Cutting edge: TGF-beta1 and IL-15 induce FOXP3⁺gammadelta regulatory T cells in the presence of antigen stimulation. *J Immunol* (2009) 183:3574–7. doi: 10.4049/jimmunol.0901334
39. Xiaoyan L, Ning K, Xuan Z, Xiaoying D, Wei W, Lianxian C, et al. Generation of human regulatory gammadelta T cells by TCRgammadelta stimulation in the presence of TGF-beta and their involvement in the pathogenesis of systemic lupus erythematosus. *J Immunol* (2011) 186:6693–700. doi: 10.4049/jimmunol.1002776
40. Ning K, Long T, Xiaoyan L, Dan W, Wenjing L, Xingming C, et al. Identification and characterization of Foxp3⁺gammadelta T cells in mouse and human. *Immunol Lett* (2009) 125:105–13. doi: 10.1016/j.imlet.2009.06.005
41. Sourav P, Girdhari L. Regulatory and effector functions of gamma-delta ($\gamma\delta$) T cells and their therapeutic potential in adoptive cellular therapy for cancer. *Int J Cancer* (2016) 139:976–85. doi: 10.1002/ijc.30109
42. Wu HX, Jin LP, Xu B, Liang SS, Li DJ. Decidual stromal cells recruit Th17 cells into decidua to promote proliferation and invasion of human trophoblast cells by secreting IL-17. *Cell Mol Immunol* (2014) 11:253–62. doi: 10.1038/cmi.2013.67

Conflict of Interest: The authors declare that the research was conducted in the absence of any commercial or financial relationships that could be construed as a potential conflict of interest.

Copyright © 2021 Kang, Wu, Huang, Yang, Liang, Chi and Wu. This is an open-access article distributed under the terms of the Creative Commons Attribution License (CC BY). The use, distribution or reproduction in other forums is permitted, provided the original author(s) and the copyright owner(s) are credited and that the original publication in this journal is cited, in accordance with accepted academic practice. No use, distribution or reproduction is permitted which does not comply with these terms.