



# Higher Incidence of B Cell Malignancies in Primary Immunodeficiencies: A Combination of Intrinsic Genomic Instability and Exocytosis Defects at the Immunological Synapse

## OPEN ACCESS

### Edited by:

Paul Thomas Manna,  
University of Cambridge,  
United Kingdom

### Reviewed by:

Saul Oswaldo Lugo Reyes,  
National Institute of Pediatrics, Mexico  
Sandra Kathrin Ammann,  
University of Freiburg Medical Center,  
Germany

### \*Correspondence:

Lisa S. Westerberg  
lisa.westerberg@ki.se  
Clément Thomas  
Clement.Thomas@lih.lu

<sup>†</sup>These authors have contributed  
equally to this work

<sup>‡</sup>These authors share senior  
authorship

### Specialty section:

This article was submitted to  
Primary Immunodeficiencies,  
a section of the journal  
Frontiers in Immunology

**Received:** 07 July 2020

**Accepted:** 09 October 2020

**Published:** 09 November 2020

### Citation:

Mastio J, Saeed MB, Wurzer H,  
Krecke M, Westerberg LS and  
Thomas C (2020) Higher Incidence of  
B Cell Malignancies in Primary  
Immunodeficiencies: A Combination of  
Intrinsic Genomic Instability and  
Exocytosis Defects at the  
Immunological Synapse.  
*Front. Immunol.* 11:581119.  
doi: 10.3389/fimmu.2020.581119

Jérôme Mastio<sup>1†</sup>, Mezida B. Saeed<sup>2†</sup>, Hannah Wurzer<sup>1</sup>, Max Krecke<sup>1</sup>,  
Lisa S. Westerberg<sup>2\*‡</sup> and Clément Thomas<sup>1\*‡</sup>

<sup>1</sup> Department of Oncology, Cytoskeleton and Cancer Progression, Luxembourg Institute of Health, Luxembourg City, Luxembourg, <sup>2</sup> Department of Microbiology, Tumor and Cell Biology, Karolinska Institutet, Stockholm, Sweden

Congenital defects of the immune system called primary immunodeficiency disorders (PID) describe a group of diseases characterized by a decrease, an absence, or a malfunction of at least one part of the immune system. As a result, PID patients are more prone to develop life-threatening complications, including cancer. PID currently include over 400 different disorders, however, the variety of PID-related cancers is narrow. We discuss here reasons for this clinical phenotype. Namely, PID can lead to cell intrinsic failure to control cell transformation, failure to activate tumor surveillance by cytotoxic cells or both. As the most frequent tumors seen among PID patients stem from faulty lymphocyte development leading to leukemia and lymphoma, we focus on the extensive genomic alterations needed to create the vast diversity of B and T lymphocytes with potential to recognize any pathogen and why defects in these processes lead to malignancies in the immunodeficient environment of PID patients. In the second part of the review, we discuss PID affecting tumor surveillance and especially membrane trafficking defects caused by altered exocytosis and regulation of the actin cytoskeleton. As an impairment of these membrane trafficking pathways often results in dysfunctional effector immune cells, tumor cell immune evasion is elevated in PID. By considering new anti-cancer treatment concepts, such as transfer of genetically engineered immune cells, restoration of anti-tumor immunity in PID patients could be an approach to complement standard therapies.

**Keywords:** immunological synapse, actin cytoskeleton, membrane trafficking, exocytosis, cancer, primary immunodeficiencies, B cells, cytotoxic cells

## INTRODUCTION

Primary immunodeficiency disorders (PID) represent a group of more than 400 inherited diseases that occur when at least one component of the immune system is either absent or dysfunctional (1, 2). PID patients have a higher risk of developing severe and often fatal infections, allergies, autoimmune complications, and malignancies (3, 4). Not long ago, these PID were considered rare conditions. However, with the advent of high throughput next generation sequencing technologies, the accuracy of PID diagnosis has markedly improved, especially for complex PID (5). Consequently, the incidence of PID has increased, from approximately 1/10000 to 1/1000–1/5000 during the last years (1). The discovery of new genetic defects continues to increase the incidence of PID. For these reasons, a better understanding of the PID related complications is critical to improve treatments and the clinical outcome of PID patients.

Among the complications associated with PID, cancer has received a particular attention. Several large cohort studies conducted in different parts of the world have shown an increased relative risk of cancer in PID patients (6–8). Cancer in PID often involves hematological malignancies that may stem from intrinsic failure to regulate genetic instability and cell transformation during hematopoietic cell differentiation and/or from altered tumor immunosurveillance by cytotoxic lymphocytes. During diversification of the B cell receptor (BCR) and T cell receptor (TCR), B and T cells undergo complex genetic alteration including DNA double strand breaks (DSB), DNA repair, cell proliferation and cell death (9). Tumor immunosurveillance involves multiple types of immune cells with cytotoxic lymphocytes, CD8<sup>+</sup> T cells and Natural Killer (NK) cells, playing a major role in cancer cell elimination (10). Detection and eradication of cancer cells rely on the ability of cytotoxic lymphocytes to form a stable and functional lytic immunological synapse (IS). The IS can be defined as the interface between a cytotoxic immune cell and a target cell. The center of the IS consists of a closed nanoscale space termed

synaptic cleft where most of the transcellular communications occurs. Both the cytotoxic cell and the target cell engage multiple complementary receptors and ligands across the synaptic cleft. For CD8<sup>+</sup> T cells, the interaction between the T cell receptor (TCR) and the class I major histocompatibility complex (MHC) is critical for killing of the target cell. For NK cells, the recognition of activating and inhibitory ligands by NK cell specific receptors drives the killing response. These interactions trigger intracellular signals that allow cytotoxic lymphocytes to respond to the encountered cell accordingly. When the cognate target cell is a healthy cell, an inhibitory synapse is formed. This inhibitory synapse prevents the engagement of the cytotoxic lymphocytes lytic machinery and thus preserves healthy cells from cytotoxic deleterious effects (11). When cytotoxic cells are in contact with antigen presenting cells (APC), such as dendritic cells (DC), the lytic cascade is prevented and the synapse that is assembled is called a regulatory synapse (11). Regulatory synapses are required to promote CD8<sup>+</sup> T cell priming by DC, but also DC licensing by CD4<sup>+</sup> T cells. Finally, if the target cell is recognized as malignant, a lytic IS is formed (11). A characteristic of the lytic IS is the secretion of cytotoxic molecules within the cleft. Once released, the cytotoxic molecules penetrate the cancer cell and induce cell death, mostly by apoptosis. Directed release of cytotoxic granules toward the target cell guarantees that surrounding healthy cells are not affected by the immune surveillance defense mechanism (12). In PID patients with aberrantly functional cytotoxic lymphocytes, the immune surveillance is impaired (1, 2). As a result, the appearance and progression of malignancies are common in PID patients. Dysfunctions of cytotoxic cells can occur at several stages during cancer cell killing and can affect multiple subcellular networks. For instance, the IS is frequently altered in PID patients. Most of the time, the loss of molecules in the actin and microtubule cytoskeleton causes defective IS formation. The actin and microtubule cytoskeleton are needed to support the architecture and dynamics of the IS, notably the three concentric supra-molecular activation clusters (SMACs) (central, peripheral and distal) observed at the T cell IS (13). In addition to mutations in cytoskeletal proteins, mutations in molecules of the exocytosis machinery are commonly found among PID patients.

In this review, we will first address the different factors that increase the risk of cancer in PID patients. We will specifically focus on the most represented cancer types found in the PID population, namely lymphomas and leukemia and why they develop. We will thereafter present genetic defects classified as PID and known to impair either the formation, stability or function of the IS. Any alterations affecting regulatory synapses will also be discussed (11).

## MALIGNANCIES IN PID PATIENTS

### PID Associated Malignancies

Over the past decade, advances, and availability of genetic diagnostic tools such as next generation sequencing has shed

**Abbreviations:** A-EJ, alternative end joining; AID, activation-induced cytidine deaminase; APC, antigen presenting cell; Arp2/3, actin-related proteins 2/3; BCR, B cell receptor; BER, base excision repair; C, constant (segment in the IgH locus); CSH, Chediak-Higashi syndrome; CSR, class switch recombination; CVID, common variable immunodeficiency; DAG, diacylglycerol; DC, dendritic cell; DOCK, dedicator of cytokinesis; DSB, DNA double strand breaks; DZ, dark zone; EBV, Epstein-Barr virus; F-actin, filamentous actin; FDC, follicular dendritic cell; FHL, familial hemophagocytic lymphohistiocytosis; GC, germinal center; GS, Griscelli syndrome; HPS, Hermansky-Pudlak syndrome; HR, homologous recombination; Ig, immunoglobulin; IgH, immunoglobulin heavy chain; Igk, immunoglobulin kappa light chain; Igl, immunoglobulin lambda light chain; IgL, immunoglobulin light chain; IS, immunological synapse; ITK, inducible T cell kinase; LZ, light zone; MHC, major histocompatibility complex; MMR, mismatch repair; MTOC, microtubule-organizing center; N, non-germline-encoded nucleotides; NHEJ, non-homologous end joining; NK cell, natural killer cell; P, palindromic (nucleotides); PI3K, phosphoinositide 3-kinases; PID, primary immunodeficiency disorders; PIP2, phosphatidylinositol 4,5 bisphosphate; PLC $\gamma$ 1, phospholipase C $\gamma$ 1; PPR, proline rich region; PSTPIP1, proline-serine-threonine phosphatase interacting protein 1; RAG, recombination activation gene; ROS, reactive oxygen species; RSS, recombination signature sequences; SHM, somatic hypermutation; SMAC, supra-molecular activation cluster.

light on the prevalence of PID with  $\approx$  400 disorders identified (2). Large multi-centre studies in different countries have also been conducted to describe the complexity of clinical presentations (14). Systematic reviews of epidemiological data describing the frequency and nature of malignancies associated with PID has yielded surprising insights. Firstly, malignancies occur more frequently and earlier in life in PID patients (15). Secondly, when compared to cancer incidence in general, malignancies associated with PID are narrower in range with higher incidence of hematological malignancies, with non-Hodgkin lymphomas, diffuse large B cell lymphomas, marginal zone lymphomas and Burkitt lymphomas accounting for a high proportion of these disorders (16). Finally, the nature of PID associated malignancies is different from malignancies caused by secondary immunosuppression. In transplant recipients or patients with acquired immunodeficiency syndrome most malignancies present as melanoma and renal cell carcinoma. However, melanoma and renal cancer carcinoma is uncommon in PID patients (17). Taken together, these observations argue for an intrinsic role of the PID causing genes in molecular mechanisms of genomic stability and cell transformation. The development of antigen specific immunity requires the generation of B and T cells bearing antigen specific receptors that are expressed upon complex rearrangements of gene segments followed by cell proliferation and cell death during selection of antigen receptor bearing B and T cells. This remarkable system enables the host to develop an astounding diversity in adaptive immune cells against a wide range of pathogens. It is not surprising that the large network of molecular players involved in the genetic rearrangements, proliferation and apoptosis make B and T cells highly susceptible to cellular transformation. Here, we focus on the development of B cells to first describe the molecular machinery required for generating receptor diversity and then discuss aspects of this process that predispose to PID with malignancies.

## Programmed DNA Repair and Proliferation of B Cells

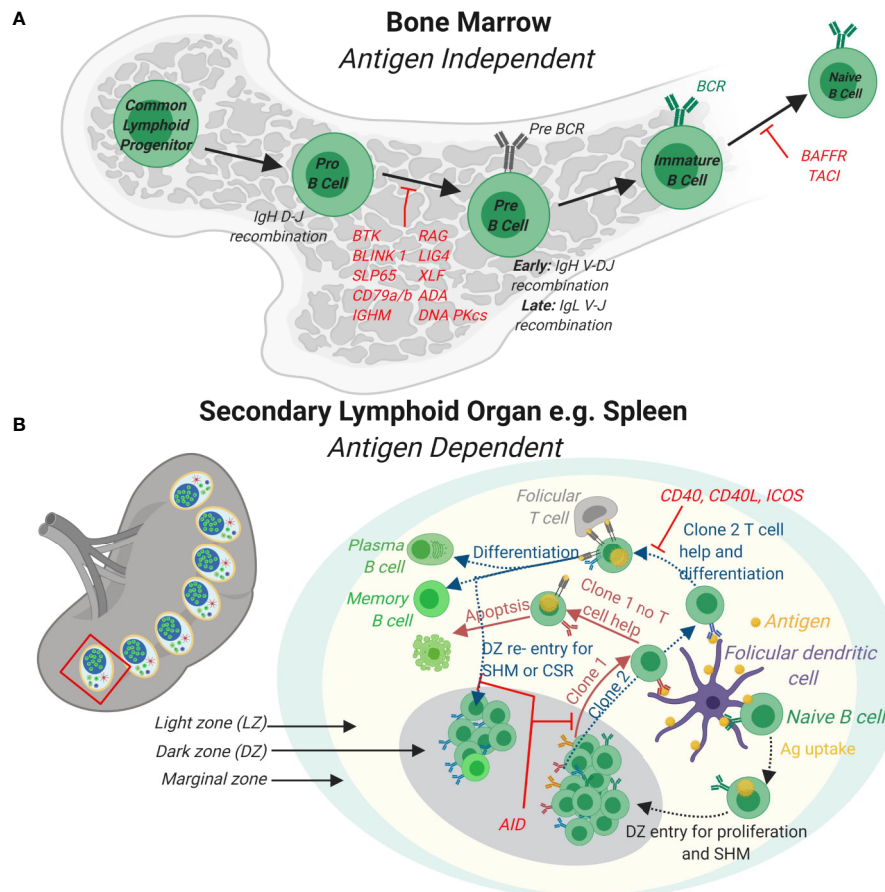
### V(D)J Recombination

B cells are characterized by the expression of the BCR that is composed of the immunoglobulin (Ig) heavy (IgH) and light (IgL or Ig $\lambda$ , collectively IgL) chains (18). Antibody producing B cells in the periphery develop from common progenitor cells in a series of developmental processes in the bone marrow and in secondary lymphoid organs such as lymph nodes and spleen (Figure 1) (19). The genomic rearrangements to generate the BCR serve to increase the repertoire of antigens that can be identified by the BCR (via V(D)J recombination and somatic hypermutations, SHM) as well as the efficacy of the antibody response (Ig class switch recombination, CSR). Development in the bone marrow results in the formation of naïve B cells that express a functional BCR that contain a unique combination of IgH and IgL chains. The IgH is the product of joining germline V (variable), D (diversity) and J (joining) gene segments while the IgL is a product of recombining V and J gene segments only (20). Both rearrangements are mediated by the lymphocyte-specific

recombination activation gene 1 (RAG1) and RAG2 endonucleases (21–23). The RAG1/2 complex initiates the Ig loci rearrangement by introducing DNA DSB through binding to recombination signature sequences (RSS) that flank the V(D)J segments and introduces a nick that exposes a 3'-OH group to form a hairpin by a transesterification reaction (Figure 2) (24, 25). The hairpin structures can be resolved in different ways to generate palindromic P elements. Exonucleases can remove nucleotides from the ends of the rearranged genes. The enzyme terminal deoxynucleotidyl transferase (TdT) randomly adds non-germline-encoded N nucleotides to the ends of the rearranged genes before they are joined. The RAG1/2 mediated DSB are repaired by the classical non-homologous end joining (NHEJ) repair machinery (9). During NHEJ, the Ku70 and Ku80 end-binding complex recognizes DSB and the XRCC4 and DNA Ligase 4 complex joins them (9). Ku70/Ku80 recruits the DNA dependent protein kinase catalytic subunit (DNA-PKc) that activates end processing by the Artemis endonuclease (26, 27). Several DNA polymerases may contribute to end polishing including Pol $\eta$  (28). DNA DSB activate the ATM-dependent DNA damage response (DDR) in which ATM phosphorylates numerous substrates that mediate cell-cycle checkpoints and DNA repair, including p53 for cell cycle arrest and the chromatin-associated proteins H2AX and 53BP1 that binds to DSB (29). In contrast to homologous recombination (HR) that depends on large stretches of homologous sequence to guide repair and takes place in the S phase of the cell cycle, NHEJ repairs DNA breaks throughout the cell cycle using a spectrum of ends. These include DNA breaks lacking homology (direct joining) to those employing short microhomology sequences often from single strand overhangs from the break to guide repair (9). During the repair process, additional nucleotides are incorporated into the junctions from P and N nucleotides. The nucleotide changes caused by NHEJ repair, most often additions, is termed junctional diversity because of the large contribution to the diversity of BCRs that can be produced. An important mechanism to ascertain that one B cell expresses only one specific combination of IgH and IgL chains is allelic exclusion. Upon productive rearrangement of the IgH and IgL chains, successful signaling by the surface expressed BCR silences rearrangement of the additional alleles encoding the IgH and IgL chains. Allelic exclusion was discovered based on allotypic markers for each of the IgH alleles to distinguish surface expression of the two IgH alleles (30).

### Somatic Hypermutation and Germinal Center Response

During an immune response, transient structures called germinal centers (GC) form in secondary lymphoid organs such as the spleen and lymph nodes. In GCs, B cells undergo further maturation to become memory cells and plasma cells that produce high-affinity antibodies (Figure 1) (31). Affinity maturation describes the evolution of high affinity antibody producing B cells in GCs through iterative rounds of somatic hypermutations (SHM) in the variable region of the BCR and clonal expansion (32). SHM is mediated in GCs through the activity of the enzyme activation-induced cytidine deaminase

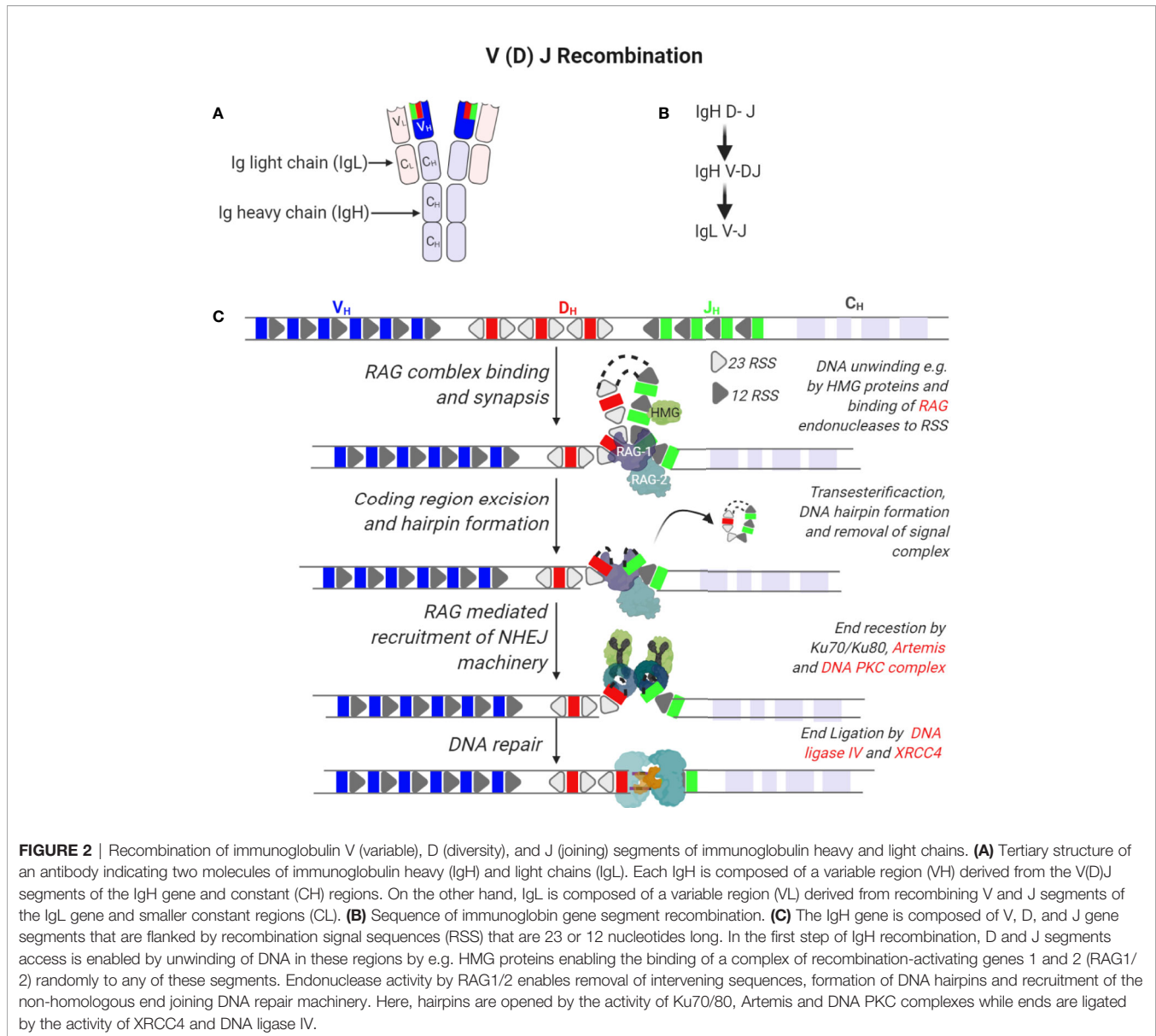


**FIGURE 1** | B cell development in the bone marrow and periphery. **(A)** In the bone marrow, B cells develop from Common Lymphoid Progenitor cells to naïve B cells expressing a functional B cell receptor (BCR) in a series of developmental steps. Firstly, expression of lymphocyte specific RAG complexes triggers Pro-B cell development by initiating the recombination of the D and J segments of the Immunoglobulin heavy chain (IgH) and expression of surrogate light chains. Further differentiation of Pre-B cells leads to the rearrangement of the complete IgH and also Ig light (IgL) gene. Immature B cells with functional BCRs receive stimulatory signals completing naïve B cell development in the bone marrow. **(B)** In response to antigens, naïve B cells develop further into effector B cells in peripheral lymphoid organs such as the spleen (shown) or lymph nodes (not shown). In the spleen, germinal centers (GCs) that are specialized structures that contain follicular dendritic cells and T follicular helper cells are formed. A GC contains a light zone (LZ) and a dark zone (DZ). The marginal zone surrounds the GC. Naïve B cells take up antigen presented by follicular dendritic cells in the LZ. BCR signaling induces B cell proliferation in the DZ and triggers AID somatic hyper mutation (SHM) of the BCR. B cells expressing newly formed clones (e.g. clones 1 and 2) re-enter the LZ to take up antigen from follicular DCs and present these *via* major histocompatibility complex (MHC) II to T follicular helper cells. Clones (e.g. clone 1) that do not receive T cell help *via* CD40-CD40 L signaling axis fail to differentiate and survive. Clones that receive T cell help (e.g. clone 2) differentiate to antibody secreting plasma cells or long-lived memory cell or re-enter the DZ for further SHM and class switch recombination (CSR). Loss of function mutations for genes involved and that cause PID are indicated in red.

(AID) (33–35). AID belongs to the APOBEC family of RNA editing enzymes and catalyzes deamination of cytidine *in vitro*, from deoxycytidine (dC) into deoxyuridine (dU) in V segments of the IgH and IgL genes (Figure 3) (35). Uridine nucleotides in DNA are recognized and removed by the Uracil-DNA glycosylase (UNG) (36). UNG triggers DNA repair *via* multiple pathways including the base excision repair (BER) or mismatch repair (MMR) pathways. These DNA repair pathways are error prone and introduce nucleotide exchange and additional nucleotide mutations during the repair of the V segment, diversifying the BCR. Affinity maturation through SHM is important for development of the robust immune response to pathogens, as highlighted in the many PID that affect the GC response leading to aberrant B cell antibody

responses (37). For instance, patients lacking AID or UNG activity and therefore SHM, develop hyper IgM syndrome and are prone to severe bacterial infections (38). Interestingly, SHM in GCs upon an infection may be important to prevent expansion of autoreactive B cells since a vast majority of germline encoded antibodies produced by early B cell precursors contain autoreactive epitopes (39, 40).

GC B cells that have undergone SHM of the BCR are subjected to fierce competition for survival and clonal expansion. Competition involves BCR mediated binding of native antigen presented on follicular dendritic cells (FDC) and the availability of limited help from T follicular helper (Tfh) cells (41). GCs contain dark and light zone areas (DZ and LZ, respectively). Pulse chase experiments and more recently

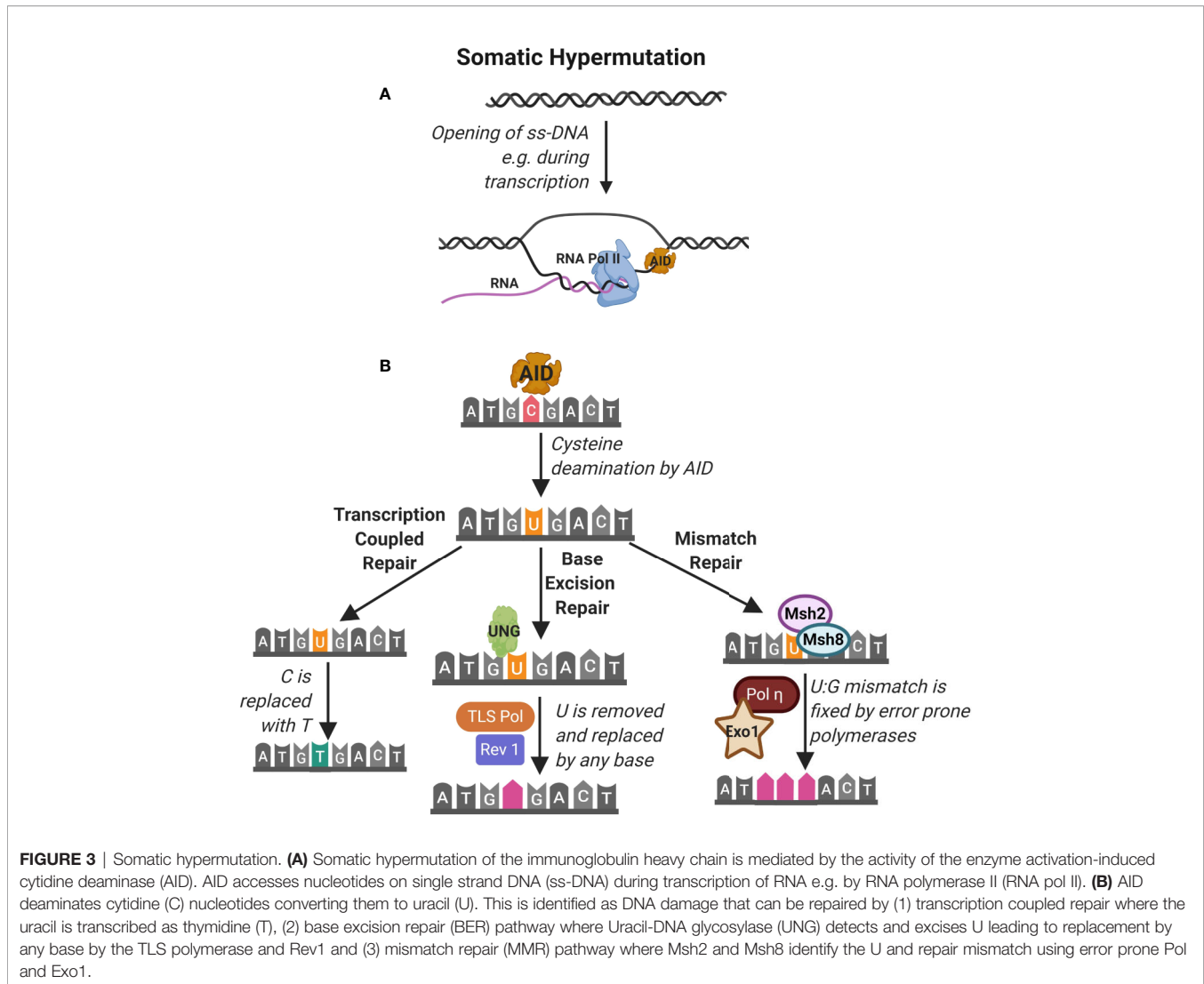


multiphoton intravital imaging studies revealed that follicular B cells are highly dynamic and migrate considerably between the LZ and DZ (42, 43). Moreover, GC B cells form short dynamic interactions with antigen presenting FDC and Tfh cells in the LZ while the DZ is filled with proliferating B cells expressing AID. Thus, B cells form specialized intracellular contact sites to capture antigens from the FDC and to present antigen on MHC class II molecules to receive help *via* IS formation with Tfh cells (44). B cells that have the highest affinity receptor for the antigen will capture the highest quantity of antigens, leading to increased antigen presentation to Tfh cells and thereby receiving an increased help from Tfh cells to initiate the memory cell and plasma cell program (44, 45). Therefore, synaptic interactions *via* IS are critical for the expansion, contraction and selection of GC clones as they provide important feedback on the strength of BCR signaling and

efficiency of antigen presentation. B cells interactions with Tfh cells are critical in GC formation and propagation as (1) inborn errors in the CD40 receptor expressed on GC B cells or the CD40 ligand (CD40L) expressed on Tfh cells cause PID with complete lack of GCs and (2) CD40/CD40L blocking antibodies are sufficient to stop an ongoing GC reaction (46, 47).

### Ig Class Switch Recombination

An important aspect of adaptive immunity is the functional diversification of antibodies from IgM and IgD subclasses, co-expressed on immature B cells, to IgG, IgA, and IgE antibody subclasses encoded by the constant (C) segments (C $\mu$ , C $\delta$ , C $\gamma$ , C $\alpha$ , C $\epsilon$ ) in the IgH chain (**Figure 4**). The functional antibody isotype is determined by the microenvironment where B cells integrate signals from cytokines and receptor interactions to produce different antibody isotypes. This process is known as Ig



CSR and involves the introduction of double strand breaks in the switch regions 5' of each IgH constant region (**Figure 4**) (48). Similar to SHM, CSR is mediated by the activity of AID. AID deaminates cytosine to uracil in the switch regions in a process that involves formation of DNA-RNA R-loops with non-template single stranded DNA. Due to the high frequency of GC nucleotides in the switch regions, AID deamination and UNG removal of uracils lead to double strand breaks that are repaired by the error prone BER and MMR pathways. The repair results in short (1-4 bp) addition of nucleotides, termed microhomology regions, between the joined switch regions. Chromatin remodeling and loop extrusion are critical features of CSR for ligation of double strand breaks in the two switch regions (**Figure 4**) (49). Many malignancies result from faulty repair of DNA double strand breaks during CSR, which can lead to c-myc and Bcl6 oncogenes translocations to the IgH chain locus under the control of the powerful promoter normally required for BCR expression (29).

### Malignant DNA Repair and Proliferation in B Cells

A hallmark of cancer is genomic instability leading to cellular transformation. The multiple rounds of DNA damage and repair required for B cell development makes B cells susceptible to the absence of molecules involved in repair pathways and PID can arise from the functional loss of such genes. B cell lymphomas comprises a heterogeneous group of malignancies that can be distinguished using clinical and pathological methods owing to subtype resemblance to B cells at a stage of differentiation as well as to gene expression profiling (50). Genetic studies have identified chromosome translocations as the most frequent genetic lesions in B cell malignancies (51). These can include deregulated expression by the juxtaposition of promoters or enhancers from other chromosomes such as translocation of c-myc under the enhancer of the IgH locus or fusion of genes on two separate chromosomes such as translocation leading to chronic myeloid leukemia (CML) and B cell acute lymphocytic



has been implicated in cellular processes such as cytokinesis and genomic stability that are often dysregulated in malignant transformation (70). Specifically, most of the PID causative actin regulators, including Coronin-1A (71, 72), Rac2 (73), Dock2 (74), Dock8 (75), Moesin (73), RhoH (76), WIP (77), ARHGEF1 (78), CARMIL2 (79), and MKL1 (80), have been associated with increased predisposition to malignancy in multicenter or case studies, animal models or identified as specific biomarkers for specific malignant transformations.

Actin dynamics in immune cells are critical for cellular activation and function. To what extent the actin cytoskeleton intrinsically regulates genomic stability in addition to its well described cytoplasmic role in immune cell activation are only now beginning to be parsed out. This complex interplay and the challenge in untangling the two can be illustrated with the hematopoietic lineage restricted actin regulator Wiskott-Aldrich syndrome protein (WASp). WASp is perhaps the best studied actin regulator and WASp associated-PID include both loss and gain of function [causing Wiskott-Aldrich syndrome (WAS) (81) and X-linked neutropenia (XLN), respectively (82–84)]. These mutations are associated with aberrant functioning of multiple types of immune cells including Natural Killer (NK) cells (85–87), B cells (88–94), and T cells (95–97). Both gain of function and loss of function mutations in WASp have been associated with higher risk of malignancies. The tumor incidence in WAS is estimated to be 13%–22% with a median age of onset of 9.5 years and with poor prognosis (98, 99) and most frequently lymphoreticular tumors including non-Hodgkin lymphoma (76% of the total tumors associated with WAS), Hodgkin lymphoma, and Burkitt lymphoma (99–105). Both reduced tumor immunosurveillance by cytotoxic cells (85–87, 106, 107) and intrinsic cell transformation (107–109) contribute to malignancies in WAS. In the first XLN family with constitutively active WASp (WAS-L270P) (82), two out of six affected males have developed myelodysplastic syndrome and leukemia and one unrelated XLN patient with the WAS-I294T mutation developed myelodysplastic syndrome (83). Interestingly, somatic loss-of-function and gain-of-functions of WASp have been described in patients with lymphomas and juvenile leukemia (110, 111). Here, we discuss how WASp that has a key role in synchronizing antigen receptor signaling with actin cytoskeleton dynamics (112, 113) could also play a role in preventing cell transformation.

### Cytokinesis

Actin is critical during cell division to correctly segregate chromosomes and during cytokinesis by regulating the contractile ring of actin and myosin that cleaves the cell into two daughter cells (114, 115). During cell division, the actin cytoskeleton in adherent cells undergoes well characterized morphological changes enabling cells to detach from the substratum, round up and increase cortical rigidity, divide, and is reassembled after cytokinesis. These changes are mediated by coordination of cell cycle progression signals and the actin cytoskeleton (116). Increased actin polymerization during mitosis is associated with genomic instability and transformation. Increased activity of WASp in XLN patients leads to increased polymerized actin that during mitosis abnormally localizes around

the mitotic spindle and chromosomes throughout their alignment and separation, and also accumulates within the cleavage furrow around the spindle midzone (117). This results in genomic instability as evident in polyploid cells and cells with micronuclei and aberrant chromosomes (117–119). These abnormalities were attributable to increased actin filament content in the cells accumulating around mitotic chromosomes and delaying mitosis. Moreover, increased accumulation of polymerized actin in the cleavage furrow impeded cytokinesis. Importantly, this defect was a mechanical impedance caused by the increased actin content of the cells as these defects could be induced in WASp sufficient cells by treatment with Jasplakolide that stabilizes actin filaments or rescued by inhibiting actin polymerization *via* the Arp2/3 complex using the small molecule inhibitor CK666 (117, 118). B cells expressing constitutively active WASp show decreased Ig CSR, cell proliferation, and increased apoptosis associated with genetic instability (119).

### Genomic Stability

A phenotype observed in WAS T cells is the reduced inability to generate type 1 helper cells (120). One mechanism for this could be a reduced efficiency of IS formation by WAS T cells (121–123). Alternatively, WASp could play a role in genetic regulation of T cells. In this regard, chromatin immunoprecipitation (ChIP) experiments have revealed an association of WASp with TbxT1 genes (124, 125). Moreover, RNA sequencing analysis revealed different genetic regulation in the presence and absence of WASp (126). As WASp lacks DNA binding motifs, it is possible that these effects are in part mediated *via* its actin polymerization activity. The role of actin filaments in nuclear biology has been a matter of controversy for much of its history. While a case could be made for the presence of actin monomers in the nucleus due to the presence of specific nuclear import and export components, visualizing actin filaments, or conceptualizing biochemical signals that would drive actin polymerization has been technically challenging (127). Emergence of tools to specifically study actin filaments in the nucleus using specific reporters with nuclear localization signals as well as the presence of filament regulators such as WASp and Arp2/3 in the nucleus have reignited interest in this field. A role for nuclear actin filaments has been described in (1) homologous repair of heterochromatic double strand breaks in *Drosophila* oocyte where actin nucleation *via* Arp2/3 generate tracks for myosins to transport heterochromatic double-strand break to the nuclear lamina (128, 129), (2) regulating gene expression following serum starvation *via* N-WASp/RNA polymerase II interactions (130) and (3) in regulating the expression of key cytokines downstream of T cell receptor engagement (126, 131).

### Mechanosensing in the Nucleus

Nuclear actin polymerization is linked to functional integrin signaling at the cell surface and components of the Linker of Nucleoskeleton and Cytoskeleton complex (LINC), suggesting that cellular adhesion and mechanosensing between the plasma membrane and nucleus contribute to nuclear actin dynamics (132). Aurora A and Aurora B jointly coordinate chromosome segregation and anaphase microtubule dynamics (133). Aurora



A regulates microtubule dynamics and Aurora B regulates chromosome alignment at metaphase and delays abscission in cells with structural defects or chromatin bridges (134). Elevated F-actin caused by increased WASp activity such as in XLN patients leads to increased cell viscosity and activation of the Aurora B during mitosis (118). Aurora B activity is crucial in sensing mechanical changes to the centromere during chromosome alignment (134). Aurora B is interesting since it is a target for hematopoietic malignancies. A selective Aurora B inhibitor induces growth arrest and apoptosis by the accumulation of 4N and 8N DNA content of human acute leukemia cells *in vitro* and *in vivo* (135). Overexpression of Aurora B can prevent polyploidy in cells that have chemically and genetically induced mitosis defects (136) and rescue mitosis defect in cells expressing constitutively active WASp (118). The megakaryoblastic leukemia 1 (MKL1) is an actin sensor regulated by integrin signaling that binds globular (G)-actin in the cytoplasm. When the cytoplasmic G-actin concentration drops, MKL1 shuttles into the nucleus where MKL1 interacts with the serum response factor (SRF) to regulate expression of genes involved in the actin cytoskeleton. MKL1 deficiency results in severe immunodeficiency diseases (137). Increased MKL1 expression is associated with increased actin content in patient B cells leading to increased genomic instability and development of Hodgkin lymphomas (138). Together, this data suggests that increased actin content is associated with genetic instability and malignancies. Our understanding of the nuclear actin contribution in PID caused by mutations in actin regulators is in its infancy and may reveal unexpected causes for cell transformation and development of malignancies in PID.

## GENETIC DEFECTS AFFECTING THE FORMATION, STABILITY, AND FUNCTION OF THE IS

Multiple intracellular changes occur during immune cell activation upon target cell recognition, especially in regard to the actin and microtubule cytoskeletons. Together with the exocytosis machinery, these cytoskeletons regulate the adhesion to the target cell, the activation of the immune cell and the release of cytotoxic granules at the IS. Any alterations in these processes result in suboptimal eradication of cancer cells. PID with such defects are discussed in this second part. The first section is dedicated to issues mostly affecting the formation and the stability of the IS, along with their consequences on immune cells activation. PID with altered exocytosis of cytotoxic granules are addressed in the second section.

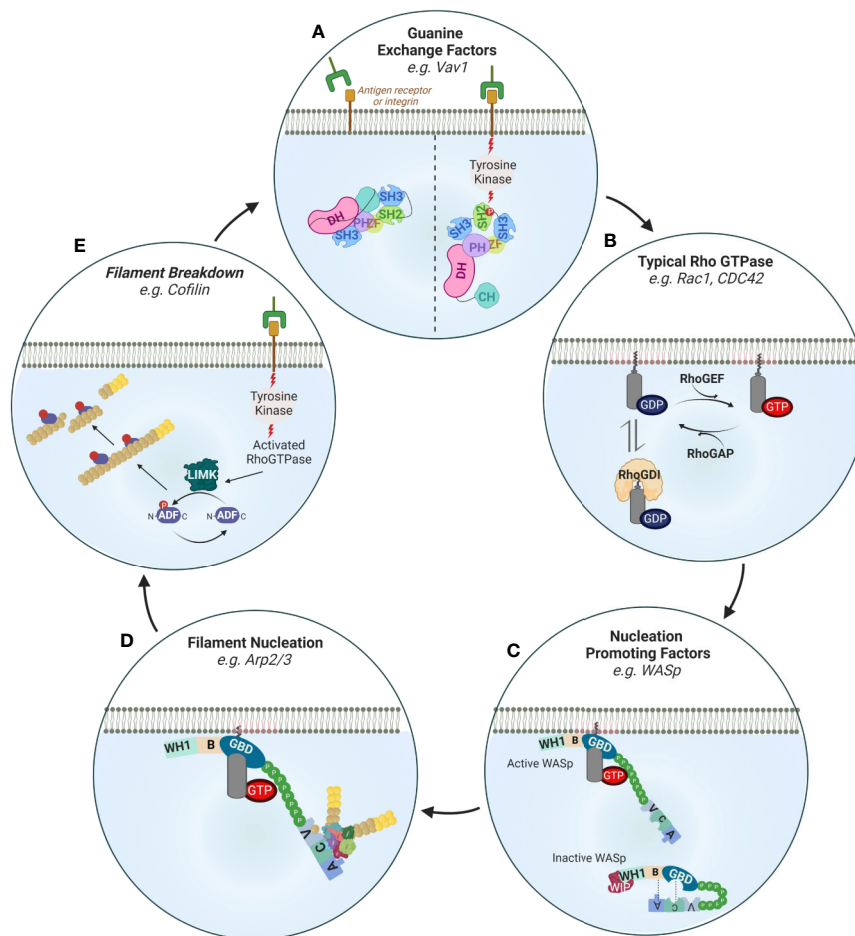
### PID Affecting the Formation and the Stability of the IS

Many PID patients harbor mutations in the genes encoding key proteins of the actin polymerization cascade (139, 140). As reorganization of the actin cytoskeleton is indispensable for IS formation, maturation, stability, and function (11), such

mutations can have profound effects on the IS. Although formins, that directly nucleates actin polymerization, are required for various functional aspects of the IS (141–143), mutations in formin encoding genes have not yet been identified in PID patients. In contrast, mutations in regulators of actin polymerization mediated by the Arp2/3 complex are numerous. Of these, mutations in the WAS gene encoding WASp have been extensively studied and revealed the importance for actin cytoskeleton dynamics in tumor surveillance by cytotoxic cells. In the steady state, WASp is maintained in an inactive conformation that is stabilized by WIP (144). In addition, WIP acts as a chaperon by protecting WASp from both proteasome and calpain-mediated degradation. Upon intracellular transmission of activating signals, the active form of the Rho GTPase CDC42 (GTP-bound) binds to the GTPase binding domain of WASp. This interaction with CDC42 converts WASp into an active open confirmation that delivers actin monomers to the Arp2/3 complex. Consequently, the Arp2/3 complex initiates the formation of a branched actin network underneath the membrane of the IS (**Figure 5**).

### Defects Associated With WASp

In PID patients deficient of WASp expression, this branched actin network is defective. As WASp contains multiple functional domains, the effects of the mutations on WASp can vary greatly depending on where the mutations are located on the WAS gene. Some WASp mutations result in half size truncated proteins that are devoid of the verprolin-cofilin-acidic (VCA) C-terminal domain. Without this VCA domain, the interaction with Arp2/3 is completely abolished (145) (**Figure 5**). Other mutations, in particular those in the proline rich region (PRR), can prevent WASp localization at the T cell:APC contact site. As a result, WASp has a diffuse pattern inside T cells and fails to polymerize actin at the IS (146, 147). A possible explanation for this mislocalization could come from the inability of WASp to interact with the adaptor proline-serine-threonine phosphatase interacting protein 1 (PSTPIP1) (148). Interestingly, a similar role for PSTPIP1 in IS formation has been described in CD4<sup>+</sup> T cells from common CVID patients (149), suggesting that the TCR-PSTPIP1-WASp pathway can be altered in different PID. At the membrane level, the precise recruitment pathway of WASp is still controversial. While WASp is recruited within lipid rafts by Zap70 and CrKL (150), this is not the case for its PSTPIP1 mediated recruitment. It is interesting to note that CrKL is also one of the genes deleted in the DiGeorge syndrome, a PID associated with reduced NK cell cytotoxicity (151) and T cell proliferation (152). In addition, Zap70 activity is also required for CDC42 recruitment at the T cell:APC IS (147). These results indicate that Zap70 positioning at the membrane is critical for IS formation. In fact, membrane recruitment of Zap70 is dependent on the RhoH GTPase (153). Although the tyrosine kinase SYK can partially compensate for Zap70 loss in CD8<sup>+</sup> T cells (154), both Zap70 and RhoH deficiencies lead to PID with alterations in T cells (155). WASp deficiency can also be caused by an absence of WIP. Without WIP, WASp is rapidly



**FIGURE 5** | Regulation of actin filament turnover. **(A)** Guanine exchange factors such as Vav1 are activated downstream of receptor tyrosine kinase (RTK) signaling. Upon phosphorylation of its SH2 domain, Vav1 undergoes intramolecular reorganization that releases its nucleotide exchanging Dbl homology (DH)-pleckstrin homology (PH). Other important GEFs in immune cells are the DOCK family members (not shown). DOCKs are structurally different from the Vav family members in important ways. Namely, they contain lipid-binding domains (and thus are directly recruited to membranes) and lack DH-PH domains requiring association with the Elmo family of proteins to exchange nucleotides. **(B)** The activity of typical Rho GTPases is regulated by 1) GTP cycling and 2) intracellular retention by Rho GDI proteins. Rho GEFs such as Vav1, DOCK2 or DOCK8 enhance the exchange of GDP to GTP while Rho GAPs switch off Rho GTPases by enhancing the exchange of GTP with GDP. An important mechanism of signaling specificity is the preference of certain GEFs for certain Rho GTPases e.g. DOCK-2 to Rac, Gef-1 to CDC42 (not shown). **(C)** Nucleation promoting factors such as WASp are activated by Rho GTPases by relieving intramolecular folding (shown) or as in the case of the NPF WAVE regulatory complex by stabilizing a specific orientation (not shown). Inactive WASp in the cytoplasm is autoinhibited through interactions of its Basic Region (BR) with the Acidic (A) domain as well as its GTPase binding domain (GBD) with the central (C) domain. Interaction with activated CDC42 (through the GBD) and recruitment to the plasma membrane (through PIP2) relieves this inhibited conformation. Through its WH1 domain WASp also interacts with WIP which regulates its activity. **(D)** Activated membrane-proximal WASp interacts with the Arp2/3 complex to mediate the nucleation of new filaments at a 70° angle by direct binding of its CA domains to Arp2/3 and to profilin and actin through its verprolin (V) domain. Other important actin nucleators are the forms that are also similarly activated by relief of autoinhibitory intramolecular folding following interaction with Rho GTPases downstream of tyrosine kinase signaling (not shown). **(E)** Receptor tyrosine kinases also activate filament breakdown which is important in maintaining a pool of profilin actin monomers that can be used for *de novo* actin polymerization as well as feedback regulation of activation. A key protein in actin severing is cofilin which enhances filament severing and breakdown by decorating actin filaments. Cofilin is activated by LIMK mediated phosphorylation.

degraded. As a result, CD8<sup>+</sup> T cells from WIP deficient patients cannot assemble an IS and thus perform cytolytic functions (156).

DCs and CD4<sup>+</sup> T cells, both of which are required to support an optimal CD8<sup>+</sup> T cell response, can also be affected by WASp deficiency. Indeed unstable synapses have been observed in murine WASp deficient DCs (157). Due to a shorter cell-cell interaction time, these DCs failed to prime T cells. Moreover,

WASp deficient DCs migrate less efficiently from the periphery to secondary lymphoid organs, a major hurdle for tumor antigen presentation to CD8<sup>+</sup> T cells (158). Interestingly, in the absence of WASp, CD8<sup>+</sup> DCs acquire antigen cross-presentation ability that is dependent on Rac2, a Rho GTPase mutated in some PID (159, 160). In CD4<sup>+</sup> T cells, the absence of WASp leads to unstable synapses and CD4<sup>+</sup> T cells are then unable to uphold a sustained calcium flux required for their full activation (161). In

addition, studies performed with murine CD4<sup>+</sup> T cells have shown that the Fyn kinase needs to be recruited to the IS to activate WASp (148). Surprisingly, this type of WASp activation occurs independently of CDC42 binding.

Impaired NK cells lytic functions are also observed in WAS patients and WASp deficient mice (85, 86, 106, 107). In the absence of WASp, the NK cell IS is immature and lacks multiple signaling molecules. The local recruitment of proteins involved in calcium signaling, like Zap70 and calcineurin, is delayed (162). Consequently, the calcium-dependent nuclear translocation of the NFAT2 and NF- $\kappa$ B (RelA) transcription factors is reduced. Although their exact functions in NK cells are still unclear, their roles in cytokine gene transcription during T cell activation have been well characterized (163, 164). However, the lytic functions of WASp deficient NK cells can be restored by exposure to interleukin-2 (IL-2). This effect is mediated by WAVE2 and is thus completely independent of WASp (87). This result showed that IL-2 can trigger a WAVE2-dependent alternative actin reorganization pathway. In a similar manner, IL-2 can restore actin polymerization, degranulation and interferon- $\gamma$  (IFN- $\gamma$ ) production in murine WASp KO NK cells (86). Tumors naturally producing IL-2 could thus be kept in check by murine WASp KO NK cells *in vivo*. Interestingly, the same study reported that high expression of WASp and IL-2 correlated with a better survival in neuroblastoma patients. All these different results paved the road for IL-2-based clinical trials in WAS patients (165). Other types of therapies, such as hematopoietic stem cells gene transfer, have been proposed to overcome WASp deficiency (166). In some rare cases, secondary mutations in the WAS gene can correct the DNA sequence modification caused by the first mutation and thus restore the submembrane localization of WASp (167).

### Defects Associated With the Arp2/3 Complex

In addition to WASp mutations, mutations in the genes encoding for the different subunits of the Arp2/3 complex can also affect the IS stability and function. CD8<sup>+</sup> T cells from patients lacking ARPC1B, a component of the Arp2/3 complex, fail to remain firmly attached to cancer cells, resulting in lower degranulation and killing efficiency (168). Additionally, these CD8<sup>+</sup> T cells harbor defective proliferation due to reduced cell surface expression of the glucose transporter GLUT1, the CD8 co-receptor and the TCR. Interestingly, the microtubule cytoskeleton is unaltered in ARPC1B PID patients. Reduced IS area and conjugates number were reported in additional ARPC1B deficient patients by Brigida et al. (169). As the Arp2/3 complex needs actin monomers to induce branched polymerization, maintaining an intracellular actin monomer pool is essential. Accordingly, inhibition of the actin filament depolymerization can indirectly perturb Arp2/3 activity. This could explain why T cells from patients deficient for WDR1, a protein implicated in actin filament turnover, show impaired calcium influx and proliferation upon TCR engagement (156).

### Defects Associated With LFA-1

The LFA-1 integrin present on the cell surface of cytotoxic lymphocytes is essential to ensure a tight adhesion to cancer

cells. LFA-1 can adopt multiple conformations, which all differ in their ligand-binding affinities. Activation of LFA-1 and subsequent switch to its high affinity conformation are mediated by inside-out signaling (170). Defects in the inside-out signaling molecules, or mislocalization of LFA-1 and its partners at the plasma membrane can severely impair the IS. As all these steps are dependent on actin dynamics, any perturbation of the actin cytoskeleton can have harmful consequences for LFA-1 activation (171). When LFA-1 density at the IS is reduced, the conjugation frequency is decreased. DOCK8 is required for LFA-1 clustering at the NK cell IS (172). Low conjugation efficiency along with diminished cell cytotoxicity were found in NK cells from DOCK8 deficient patients (173). In contrast to WASp deficient NK cells, impaired IS formation of DOCK8 deficient NK cells could not be rescued by IL-2 treatment. This suggests that DOCK8 acts upstream of WASp and WAVE2 in activation-induced actin cytoskeleton reorganization. As for NK cells, CD8<sup>+</sup> T cells are affected by DOCK8 deficiency indicated by absence of LFA-1 clustering at the T:DC synapse using murine cells (174). This incorrect priming leads to decreased proliferation and survival of DOCK8 deficient CD8<sup>+</sup> T cells. The T:DC synapse stability is also impaired in the absence of the CXCR4 chemokine receptor, as observed in WHIM PID patients (175). This could be due to the ability of CXCR4/CXCL12 axis to control LFA-1 conformation, a process known as chemokine induced inside-out signaling (176). Interestingly, T cells from PID patients deficient for moesin have an overexpression of LFA-1 but no alteration in IS formation was reported (73). However, as the proliferation of moesin deficient T cells was decreased, the signal transduction function of the IS may still be defective. Signals coming from the TCR or chemokine receptors transit through integrin binding adaptor proteins to modify the affinity of LFA-1. Such adaptors, like talin and kindlin, must be recruited to the IS to ensure LFA-1 activation (177). T cells from LAD3 syndrome patients, who are deficient for kindlin-3, fail to spread on DCs upon TCR stimulation (178) or on ICAM-1-coated slides (179). In regard to talin, its recruitment at the IS depends on the cell type. Indeed, while this process is WAVE2-dependent in T cells (180), it is mediated by DOCK8 in NK cells (172). This study also reported that DOCK8 mediates WASp recruitment. These results suggest that WASp can be recruited at the IS by various adaptors proteins. Finally, the kinase MST1 has been shown to induce the activation of DOCK8, notably upon chemokine stimulation (181, 182). In addition, MST1 and the downstream kinase NDR1 are required for kindlin-3 recruitment at the T cell IS (183). Defective LFA-1/ICAM-1-dependent cellular adhesion has been described in PID patients deficient for MST1 (184).

### PID Affecting the Secretion Cytotoxic Granules

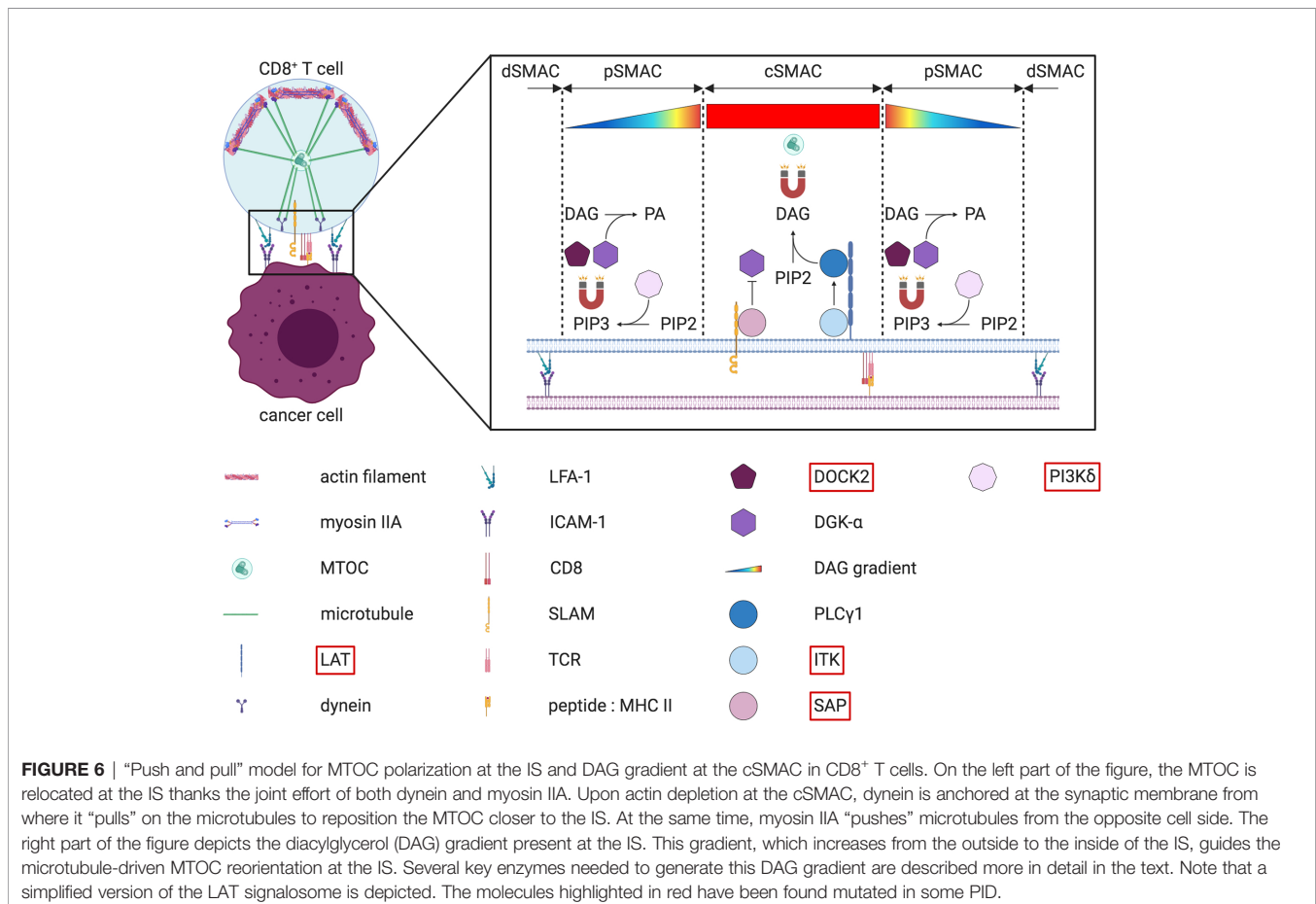
Although an intact actin cytoskeleton is mandatory for the formation of a stable IS, it is not sufficient to ensure cancer cell killing. Upon formation of a stable synapse, the second part of the target cell lysis process, when cytotoxic granules migrate towards the IS and release their content, can be affected in PID patients too. The secretion of cytotoxic granules from NK cells

and CD8<sup>+</sup> T cells requires the coordination of both microtubule and actin cytoskeletons with different vesicular pathways (185). All these steps involve multiple membrane fusion events, mostly driven by the Rab, SNARE and Munc proteins families (186–188). In addition to the mutations affecting the microtubule and the actin cytoskeletons, genetic alteration in these protein families can also result in impaired secretion of cytotoxic molecules into the synaptic cleft. Such defects are at the basis of various PID.

### Polarization of Lytic Granules to the IS

Before their secretion at the contact site, cytotoxic granules first need to reach and accumulate at the IS. Upon target recognition, lytic granules rapidly cluster around the microtubule-organizing center (MTOC). Convergence of these cytotoxic granules towards the MTOC is dependent on dynein and microtubules (189, 190). The MTOC with adjacent lytic granules migrates towards the IS. In T cells, the MTOC repositioning at the IS is mediated by a diacylglycerol (DAG) gradient (191) (Figure 6). This gradient of DAG must be tightly regulated, with a perfect balance between DAG synthesis and DAG degradation. Multiple enzymes are required to shape this gradient, and several of them have been found mutated in different PID. DAG is a secondary lipid messenger that is generated upon hydrolysis of phosphatidylinositol 4,5 bisphosphate (PIP<sub>2</sub>) by the

phospholipase C $\gamma$ 1 (PLC $\gamma$ 1). PLC $\gamma$ 1 is part of a multiprotein complex that becomes activated by the interleukin-2-inducible T cell kinase (ITK) upon TCR signaling (192). Mutations affecting the phosphorylation and activation of ITK lead to a PID with impaired degranulation of CD8<sup>+</sup> T cells (193, 194). Thus, orchestration of this cascade of enzymes and kinases is essential for DAG synthesis. To maintain optimal DAG levels, a fine-tuning of the enzyme responsible for DAG degradation, the diacylglycerol kinase- $\alpha$  (DGK- $\alpha$ ), is important. To generate a DAG gradient with increasing concentration from the periphery towards the center of the IS, DGK- $\alpha$  is specifically recruited to the pSMAC (195). In the pSMAC, synaptic PIP<sub>3</sub> is directly responsible for both the recruitment and the activation of DGK- $\alpha$ . It is produced upon phosphorylation of PIP<sub>2</sub> by the phosphoinositide 3-kinases (PI3K), especially PI3K $\delta$ . Interestingly, mutations in the subunits of PI3K also translate into multiple PID associated with decreased NK cell cytotoxicity (196, 197) and CD8<sup>+</sup> T cell proliferation (198). In addition to DGK- $\alpha$ , PIP<sub>3</sub> also recruits DOCK2, which is needed to drive a Rac1/WAVE2-dependent actin polymerization at the pSMAC (199, 200). DOCK2 deficiency has been shown to negatively alter both NK cell and CD8<sup>+</sup> T cell degranulation and is recognized as a PID (199, 201). At the same time as the peripheral recruitment of DGK- $\alpha$ , a supplementary safeguard mechanism also ensures DGK- $\alpha$  inhibition at the cSMAC. This inhibitory signal is



transmitted by the SAP adaptor protein (202). In the absence of functional SAP, as observed in XLP-1 patients, the killing of EBV-infected B cells by NK cells is severely compromised (203–205). Additional data obtained from murine cells suggest that MTOC polarization and cytotoxicity can also be impaired in SAP-deficient CD8<sup>+</sup> T cells (206). All these results demonstrate that the membrane local pool of PIP2 plays a key role in the establishment of the DAG gradient. As a consequence, this PIP2 pool is constantly replenished by the phosphatidylinositol 4-phosphate 5-kinases (PIP5K) (207, 208). In T cells, once the DAG gradient is established, actin filaments can be cleared from the cSMAC, allowing the microtubule related motor protein dynein to be recruited (209). This depletion of cortical actin is critical for the MTOC repositioning at the IS and subsequent lytic granules secretion (210, 211). These studies emphasize the involvement of the actin cytoskeleton for the MTOC polarization (141). Alterations in actin polymerization can also negatively impact the MTOC and lytic granules polarization at the IS. Simultaneously to dynein accumulation at the IS, the actin-based myosin IIA is relocalized at the opposite cell side of the IS (212). Together, dynein and myosin IIA generate the mechanical forces necessary to recruit the MTOC in a “push and pull” manner (212) (Figure 6). In NK cells, an additional role of myosin IIA in

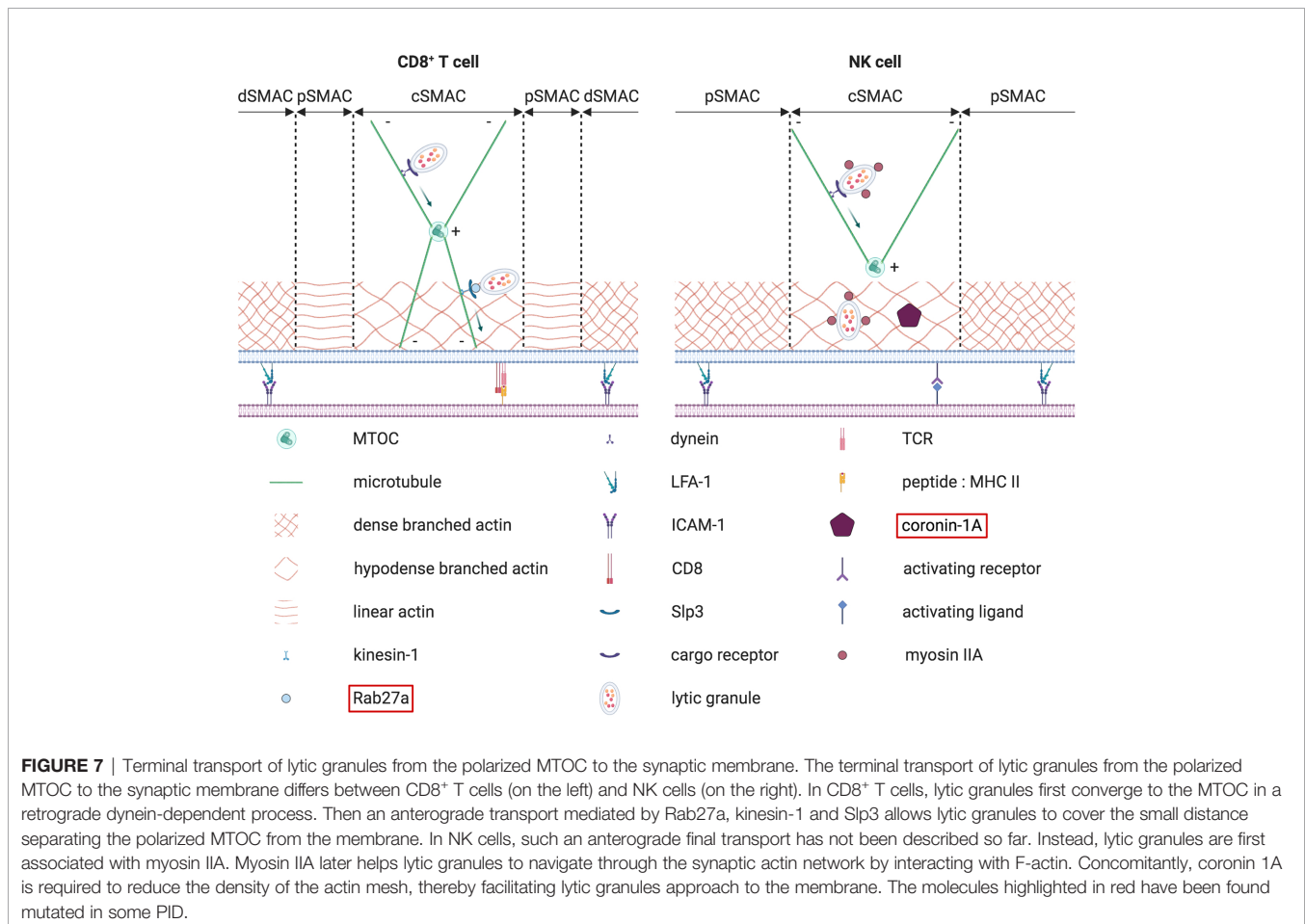
the progression of lytic granules through the synaptic actin network has been suggested (213, 214) (Figure 7).

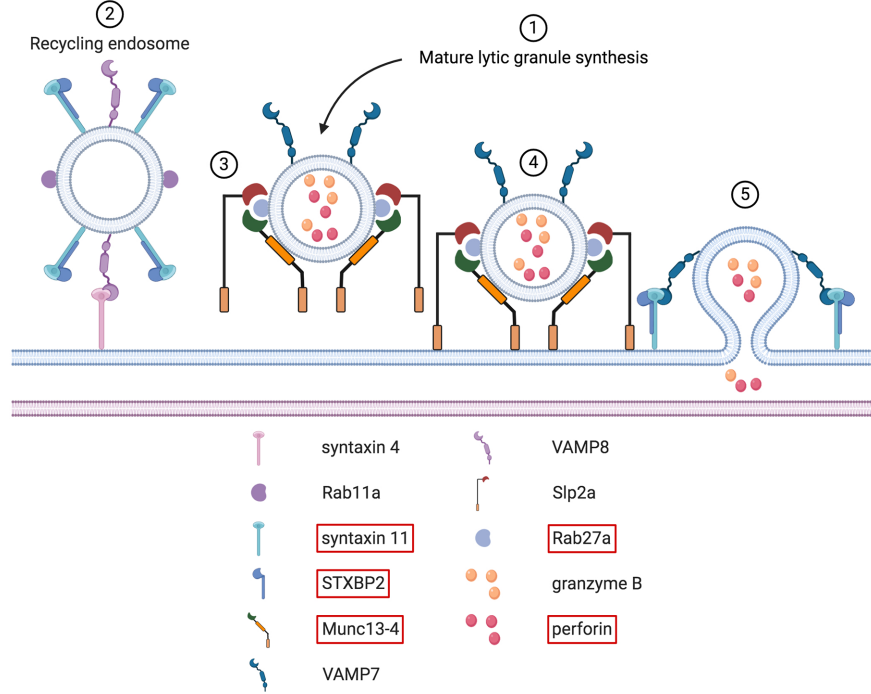
### Exocytosis of Polarized Lytic Granules

Once the cytotoxic granules have reached the IS, several sequential steps must occur to allow the release of their content within the synaptic cleft (Figure 8). Different PID are characterized by alterations of these steps. Among them are the different forms of familial hemophagocytic lymphohistiocytosis (FHL). HL is characterized by an uncontrolled activation of cytotoxic lymphocytes, which results in the hypersecretion of inflammatory cytokines. This cytokine storm syndrome often leads to fatal multi-organ failure. Depending on the gene affected, different FHL subtypes can be defined (216). As the secretory pathway is similar between NK cells and CD8<sup>+</sup> T cells, both cell types are equally affected in FHL (217).

#### Type 1 and Type 2 FHL

Although the gene mutated in type 1 FHL is located on chromosome 9, its exact name is currently unknown. Type 2 FHL is caused by mutations in the gene encoding for perforin (218). In these patients the majority of mutations lead to loss of perforin expression. As a result, the killing capacity of their





**FIGURE 8** | Docking, tethering, priming and fusion of lytic granules at the IS. Upon immune cell activation, synthesis of mature lytic granules occurs (step # 1). Several molecules, including LYST and the AP-3 complex, are involved in this process (not shown here). These two proteins are causative in the Chediak-Higashi syndrome and the type 2 Hermansky-Pudlak syndrome, respectively. Once mature lytic granules have reached the IS, sequential steps must take place to guarantee their proper docking, tethering, priming and fusion with the synaptic membrane. Before the arrival of lytic granules, Rab11a<sup>+</sup> recycling endosomes fuse with the plasma membrane through a VAMP8-syntaxin 4 interaction (step # 2). Upon this fusion, syntaxin 11/STXBP2 complexes are deposited at the plasma membrane. After newly arrived lytic granules are docked at the IS (step # 3), tethering factors ensure that these granules remain firmly in place. This is mediated by several tethering proteins, such as Munc13-4 and Slp2a (step # 4). Simultaneously, Munc13-4 primes the lytic granules for the final fusion stage. Syntaxin 11/STXBP2 complexes, formerly brought by recycling endosomes, mediate the fusion of lytic granules with the synaptic membrane by interacting with VAMP7. After this fusion step, cytotoxic molecules present within the lytic granules are released within the synaptic cleft (step # 5). Note that the interfacial actin protrusions described in CD8<sup>+</sup> T cells by Tamzalit et al. (215) are not shown.

cytotoxic lymphocytes is severely impaired. As the exocytosis machinery of these patients is normal, this subtype will not be further discussed within the scope of this special research topic (219–221).

### Type 3 FHL

Type 3 FHL is linked to mutations in the UNC13D gene. This gene encodes the Munc13-4 protein that is implicated in the cytotoxic granules priming phase, the last step before fusion with the plasma membrane (222) (**Figure 8**). Consequently, the earlier steps of IS formation, including the microtubule mediated movement of granules towards the IS, are not affected. Data obtained with murine NK cells have shown that calcium binding of Munc13-4 is essential for degranulation (223). This could potentially explain why PID affecting calcium channels also result in NK cells and CD8<sup>+</sup> T cells degranulation defects (224). Interestingly, studies performed on murine CD8<sup>+</sup> T cells suggest that the remaining degranulation observed in the absence of Munc13-4 could be due to the expression of the Munc13-1 isoform (225). Upon NK cell activation, Munc13-4 is recruited in membrane lipid rafts in a PIP2-dependent process (226). PIP2 controls Munc13-4 recycling that is essential to

ensure serial killing, a process where a cytotoxic cell can kill multiple target cells sequentially. These additional pieces of data further highlight the importance of PIP2. Regarding possible treatments options, IL-2 therapy is unfortunately not conceivable for FHL3 patients. However, they could potentially benefit from retroviral gene transfer therapy to re-establish CD8<sup>+</sup> T cell cytotoxicity (227).

### Type 4 FHL

Abnormalities in the syntaxin 11 protein are accountable for type 4 FHL (**Figure 8**). Although different types of defects have been reported, they all lead to an impaired degranulation of both NK cells and CD8<sup>+</sup> T cells (228). Some of the type 4 FHL can alter the conformation of syntaxin 11 while preserving its activity (229). This residual activity observed in NK cells could explain why some patient show signs of type 4 FHL only later in their life. Other mutations can affect the recruitment of syntaxin 11 at the IS. Transfection of different syntaxin 11 mutant constructs in the YTS NK cell line revealed that the C-terminal domain is essential for its correct localization. Without this carboxy-terminal region, syntaxin 11 is no longer S-acylated and remains dispersed in the cytoplasm (230). Initial studies suggested that CD-M6PR<sup>+</sup> late

endosomes were responsible for syntaxin 11 deposit at the NK IS (231). However, more recent data obtained from CD8<sup>+</sup> T cells suggest that syntaxin 11 rather is localized within Rab11a<sup>+</sup> recycling endosomes (232) (**Figure 8**). This specialized endosome subtype is necessary to convey syntaxin 11 at the IS prior the arrival of lytic granules, without which they fail to dock at the membrane. The interaction between VAMP8 and syntaxin 4 is required for the fusion of these recycling endosomes with the plasma membrane (233, 234) (**Figure 8**). Upon fusion, syntaxin 11 is transferred to the plasma membrane and can interact with VAMP7 that is present on arriving cytotoxic granules (235) (**Figure 8**). Alterations in VAMP7, VAMP8, and syntaxin 4 can lead to impaired degranulation and killing. In addition, defects in VAMP7 could also result in defective CD8<sup>+</sup> T cell activation, provided that the VAMP7 mediated recruitment of LAT at the IS is conserved between T cell subsets (236, 237). At the end, NK cell degranulation can also be partially restored upon IL-2 treatment (238).

#### Type 5 FHL

Type 5 FHL is characterized by mutations in the STXBP2 gene, encoding STXBP2 (also known as Munc18-2) (239, 240) (**Figure 8**). These two studies were the first to show a direct interaction between STXBP2 and syntaxin 11 (**Figure 8**). In addition, several FHL5 patients had a decreased expression of syntaxin, suggesting that STXBP2 acts as a chaperon for syntaxin 11. For this interaction, both the N terminal part and the Habc domain of syntaxin 11 must be intact (230, 241). However, STXBP2 alone is not sufficient to guarantee syntaxin 11 expression. Proteasome-mediated caspase degradation is also required (231). Moreover, syntaxin 11 cannot be transferred to the plasma membrane in the absence of STXBP2 (242). At the IS, STXBP2 promotes the assembly of syntaxin 11 containing SNARE complexes (233, 243). This step is essential to ensure complete membrane fusion. Similar to FHL4, degranulation can be partially restored with IL-2 (244). It has been suggested that STXBP1 could potentially drive this IL-2-dependent rescue pathway in the absence of STXBP2 (245).

#### Type 2 Griscelli Syndrome

Contrary to FHL where HL is the sole clinical manifestation, HL can also develop occasionally in patients initially affected by others PID (246). One of these PID is the type 2 Griscelli syndrome (GS2). GS2 is caused by mutations in RAB27A (247) (**Figure 8**). This gene encodes for the Rab27a Ras-like GTPase. Initial studies using *ashen* mice (deficient for Rab27a) showed that Rab27a is involved in the docking of lytic granules at the membrane in both NK and CD8<sup>+</sup> T cells but not in their microtubule dependent polarization (248, 249). This was later confirmed in human CD8<sup>+</sup> T cells deficient for Rab27a (222). Rab27a is not only required for the docking but also for the tethering of lytic granules at the membrane (250) (**Figure 8**). Interestingly, this tethering function of Rab27a is dependent on its interaction with Munc13-4, the protein mutated in FHL3. In addition to Munc13-4, Rab27a interacts with Slp2a to enhance the tethering (185, 251). Mutations disrupting the binding with

Rab27a interacting proteins, including Munc13-4, are found in GS2 patients (252–254). Moreover, the interaction between Rab27a and Munc-13-4 could be necessary to coordinate the transition between the tethering and priming steps (185, 255). A detailed description of the Rab27a-Munc13-4 interaction has recently been published (187). Finally, in CD8<sup>+</sup> T cells, Rab27a is implicated in the anterograde transport of lytic granules from the polarized MTOC to the plasma membrane (256, 257) (**Figure 7**).

#### Chediak-Higashi Syndrome

The Chediak-Higashi syndrome (CHS) is a PID with clinical manifestations similar to those observed in GS2 patients. The hallmark of CHS is the presence of giant lysosomes-related organelles, including cytotoxic granules, inside the cells. This is due to mutations in the gene encoding the lysosomal trafficking regulator *LYST*. About 85% of CHS patients progress into an accelerated phase which is identical to HLH (258). As seen in the other forms of HLH, both CD8<sup>+</sup> T cells and NK cells from CHS patients have an impaired degranulation (259–261). *LYST* contains several functional domains that do not result in the same pathophysiological effects when mutated. Mutations in the BEACH domain lead to the production of a normal number of slightly enlarged lytic granules in NK cells. However, these granules are not able to polarize to the IS and thus remain scattered in the cytoplasm. The reason for this defect in polarization remains unclear. On the other hand, mutations in the ARM/HEAT domain induce the formation of a small number of large lytic granules. Although these granules can migrate to the IS, they cannot efficiently be exocytosed, suggesting that the size of the actin meshwork at the cSMAC could block their passage (262), a hypothesis proposed based on work from the Orange and Davis' labs (263, 264). In 2018, Gil-Krzewska et al. confirmed it by using *LYST*-deficient NK-92 MI cells (265). Even though the machinery required for granule polarization, docking, priming and fusion of lytic granules are unaffected, these cells were unable to degranulate. Reduction of the actin network density or restoration of the normal size of lytic granules through Rab14 silencing corrected the degranulation defect, showing that the enlarged lytic granules were too big to navigate through the cortical actin mesh. Interestingly, it appears that this lytic granule size defect is more prominent in NK cells than in CD8<sup>+</sup> T cells (266). This defect is highly reminiscent of the one observed in patients deficient for coronin-1A (267). In these patients the reverse situation occurs: the lytic granules have a normal size, but the cortical actin network is too dense and thus not permissive enough for lytic granules to move properly (**Figure 7**).

#### Type 2 Hermansky-Pudlak Syndrome

HLH is also one of the complications of patients affected by the type 2 Hermansky-Pudlak syndrome (HPS2) (268, 269). HPS2 is caused by mutations in *AP3B1*, the gene encoding the  $\beta$ 3A subunit of the AP-3 complex (270). AP-3 is a multimeric complex involved in the organelle synthesis and early endosomal protein sorting. When the conformation of the  $\beta$ 3A subunit is altered, the whole AP-3 complex becomes unstable

and susceptible to degradation (271). In the absence of AP-3, the cytotoxic potential of CD8<sup>+</sup> T cells is severely reduced. This is due to the inability of lytic granules to move along microtubules towards the MTOC and thus to polarize at the IS (272). Interestingly, this study also reported that the lytic granules were enlarged, a phenotype reminiscent of CHS. Moreover, the degranulation of NK cells is impaired (273). Occasionally, some mutations located close to the C-terminal end only result in a mild HPS2, where the NK cell degranulation is still impaired but the NK cells and CD8<sup>+</sup> T cells cytotoxic response is normal (274). In addition to the  $\beta$ 3A subunit, problems with NK cells and CD8<sup>+</sup> T cells degranulation are observed when the  $\delta$  subunit is mutated (275). Given that this subunit is common to both the ubiquitous and the neuronal AP-3 forms, these patients also experienced neurologic disorders. The authors proposed to name this new PID HPS10 to distinguish it from HPS2.

## CONCLUDING REMARKS

Over the last decade, the positive correlation between PID and cancer has become more obvious. This observation is further supported by a growing body of literature and has been the subject of a special issue in *Frontiers In Immunology* in 2019 (276). Several cancer risk factors have been clearly identified in PID patients. Recurrent bacterial, viruses and fungal infections are some of the major factors. Chronic inflammation triggered by persistence of *H. pylori* is often preceding gastric cancer appearance (277–279), a phenomenon drastically worsened in some PID patients (280, 281). Similar observations were made for fungal infections (282) or for the Epstein Barr Virus, as recently highlighted in another special issue of *Frontiers In Immunology* (283). Due to their impaired immune system, PID patients fail to efficiently eradicate these cancer promoting pathogens. The immunocompromised environment of PID patients fails to successfully stop the proliferation of cancer promoting pathogens and is incapable of efficiently eliminating tumor cells once they appear. In PID patients, the tumor “search and destroy” process orchestrated by cytotoxic CD8<sup>+</sup> T cells and NK cells is often defective. A lack of both CD8<sup>+</sup> T cells and NK cells, as described in certain severe combined immunodeficiencies, can easily render tumor immunosurveillance almost non-existent. However, some alterations commonly found in PID patients are subtle in the sense that they impair the functions of cytotoxic lymphocytes rather than simply preventing their development. This is notably the case for genetic mutations with negative consequences on the formation, stability or the function of the IS.

In addition to NK cells and CD8<sup>+</sup> T cells (including the accessory DCs and CD4<sup>+</sup> helper T cells required for the CD8<sup>+</sup> T cell response), other immune cell types can assemble a synapse. Dysfunction in these types of synapses can contribute directly or indirectly to cancer onset and progression. T regulatory (Tregs) cells, a subset of CD4<sup>+</sup> T cells, is one of these cell types. In the absence of WASp, Tregs are unable to stop the proliferation of B cells (284). However, they can control the proliferation of conventional T (T conv) cells. This study provides one possible

explanation why B cell malignancies are more frequently observed among WAS patients (99). Nevertheless, the reason why the Tregs : Tconv synapse is still functional remains unclear and warrants further investigations. Besides Tregs, phagocytic cells can also form a synapse. This synapse, which is called a phagocytic synapse, shares many features with the IS, including prominent remodeling of the actin cytoskeleton (285). It is thus not surprising that the phagocytic activity by macrophages is impaired in the absence of WASp (286–288). This point is particularly interesting because multiple studies showed that macrophages are also important players in tumor immunosurveillance (289). Given that CD8<sup>+</sup> T cells and NK cells draw most of the attention, the specific role of macrophages in tumor cell eradication in the context of PID remains to be explored. Abnormalities in neutrophil mediated phagocytosis may be associated to cancer progression too. Indeed, activated neutrophils from patients affected by chronic granulomatous disease (CGD) are unable to kill non-opsonized K562 cancer cells *in vitro*, a defect linked to lower reactive oxygen species (ROS) production (290). However, elimination of antibody-coated K562 cancer cells was unaffected, suggesting a ROS-independent mechanism in this specific situation. Mechanical disruption of the cancer cell membrane has recently been proposed as the mechanism behind this ROS-independent cancer cell death (291). This new killing mechanism, named trogocytosis, requires a cell-cell contact that is dependent on the integrin Mac-1 and might also involve an actin-myosin contraction phase. Accordingly, it is highly conceivable that actin cytoskeleton alterations, such as those described here, could inhibit this process. A careful analysis of this newly described mechanism and its potential impairment in the pathogenesis of PID related cancers needs to be conducted.

Some genetic mutations found in PID patients can pose major hurdles to some anticancer therapies, such as CAR-T cells. CAR-T cell is an adoptive cell transfer therapy that has been approved as a standard of care for some lymphomas and leukemia, two of the most frequent tumor types found in PID patients (292). However, autologous CAR-T cells cannot be considered as a curative cancer treatment in PID patients. Indeed, as the transfused CAR-T cells are derived from T cells isolated from the patient’s own blood, they still carry the same genetic defect (292). Given that CAR-T cells need to form an IS with cancer target cells, the treatment is likely to fail. However, it should be noted that as the CAR-T cell synapse is less dependent on LFA-1 and shows a smaller actin ring, CAR-T cells from PID patients may be functional despite defects in actin polymerization (293). But with a cumbersome and costly process associated to an unpredictable outcome, autologous CAR-T cells are not a realistic option for PID patients (294). An alternative would be to use allogeneic CAR-T cells (295). As the infused T cells are derived from an unrelated donor, the genetic mutation initially found in the patient is no longer present. However, such adoptive transfer can lead to life-threatening complications such as the graft-versus-host disease (GVHD). “Off-the-shelf” CAR-NK cells, a promising therapy able to overcome GVDH while maintaining production costs low, could be more appropriate (296, 297).



Like many other diseases, the best strategy is to adopt a preventive approach by directly correcting the genetic defect itself. This greatly reduces the risk of developing cancer. Therefore, among all the treatments options currently available for PID patients, hematopoietic stem cell transplantation (HSCT) is the most curative and reliable one. Multiple studies have reported significant efficacy of HSCT in different PID associated with synaptic defects (92, 201, 298–305). However, HSCT is a heavy surgical procedure that requires prior immunosuppressive conditioning. Determining the best intensity of such regimens is essential before injection in individuals with already an impaired immune system (306). In addition, several complications can arise after HSCT (307, 308). Despite the recent progress achieved in HSCT, the benefit/risk ratio must be carefully assessed for each patient (309). The fact that some of these PID can be managed without HSCT makes this assessment even more critical (310). Alternative strategies are emerging and could potentially replace HSCT for specific PID (165). Until such treatments become approved as first line therapies, regular monitoring of PID patients associated with new routine procedures is critical to potentially detect early signs of cancer (310), especially as NK cytotoxicity issues have recently been identified in other PID (311–313).

## REFERENCES

1. Tangye SG, Al-Herz W, Bousfiha A, Chatila T, Cunningham-Rundles C, Etzioni A, et al. Human Inborn Errors of Immunity: 2019 Update on the Classification from the International Union of Immunological Societies Expert Committee. *J Clin Immunol* (2020) 40(1):24–64. doi: 10.1007/s10875-019-00737-x
2. Bousfiha A, Jeddane L, Picard C, Al-Herz W, Ailal F, Chatila T, et al. Human Inborn Errors of Immunity: 2019 Update of the IUIS Phenotypical Classification. *J Clin Immunol* (2020) 40(1):66–81. doi: 10.1007/s10875-020-00758-x
3. de Wit J, Brada RJK, Van Veldhuizen J, Dalm V, Pasmans S. Skin disorders are prominent features in primary immunodeficiency diseases: A systematic overview of current data. *Allergy* (2019) 74(3):464–82. doi: 10.1111/all.13681
4. Haas OA. Primary Immunodeficiency and Cancer Predisposition Revisited: Embedding Two Closely Related Concepts Into an Integrative Conceptual Framework. *Front Immunol* (2018) 9:3136. doi: 10.3389/fimmu.2018.03136
5. Gallo V, Dotta L, Giardino G, Cirillo E, Lougaris V, D'assante R, et al. Diagnostics of Primary Immunodeficiencies through Next-Generation Sequencing. *Front Immunol* (2016) 7:466. doi: 10.3389/fimmu.2016.00466
6. Jonkman-Berk BM, Van Den Berg JM, Ten Berge IJ, Bredius RG, Driessen GJ, Dalm VA, et al. Primary immunodeficiencies in the Netherlands: national patient data demonstrate the increased risk of malignancy. *Clin Immunol* (2015) 156(2):154–62. doi: 10.1016/j.clim.2014.10.003
7. Mayor PC, Eng KH, Singel KL, Abrams SII, Odunsi K, Moysich KB, et al. Cancer in primary immunodeficiency diseases: Cancer incidence in the United States Immune Deficiency Network Registry. *J Allergy Clin Immunol* (2018) 141(3):1028–35. doi: 10.1016/j.jaci.2017.05.024
8. Vajdic CM, Mao L, Van Leeuwen MT, Kirkpatrick P, Grulich AE, Riminton S. Are antibody deficiency disorders associated with a narrower range of cancers than other forms of immunodeficiency? *Blood* (2010) 116(8):1228–34. doi: 10.1182/blood-2010-03-272351
9. Alt FW, Zhang Y, Meng F. L, Guo C, Schwer B. Mechanisms of programmed DNA lesions and genomic instability in the immune system. *Cell* (2013) 152(3):417–29. doi: 10.1016/j.cell.2013.01.007
10. Martinez-Lostao L, Anel A, Pardo J. How Do Cytotoxic Lymphocytes Kill Cancer Cells? *Clin Cancer Res* (2015) 21(22):5047–56. doi: 10.1158/1078-0432.CCR-15-0685

## AUTHOR CONTRIBUTIONS

JM and MS wrote the manuscript and designed the figures. HW provided guidance to draft the plan of the manuscript. MK participated in the writing of the introduction. JM, MS, HW, LW, and CT edited the manuscript. All authors contributed to the article and approved the submitted version.

## FUNDING

This work was supported by a postdoctoral fellowship from Wenner-Gren foundations to MS, the Swedish Research Council, Cancer Society, Childhood Cancer Fund, a StratCan BlueSky award, the European Commission 7<sup>th</sup> framework program Marie Curie reintegration grant (#249177), Åke Olsson foundation, Åke Wiberg Foundation, Bergvall Foundation, King Gustaf V's 80-year Foundation, and Karolinska Institutet to LW. The work done by CT's group is supported by Cancer Foundation Luxembourg (FC/2019/02), the National Research Fund (C19/BM/13579644 and PRIDE15/10675146/CANBIO), and Think Pink Lux.

11. Wurzer H, Hoffmann C, Al Absi A, Thomas C. Actin Cytoskeleton Straddling the Immunological Synapse between Cytotoxic Lymphocytes and Cancer Cells. *Cells* (2019)8(5):463. doi: 10.3390/cells8050463
12. Hsu HT, Mace EM, Carisey AF, Viswanath DII, Christakou AE, Wiklund M, et al. NK cells converge lytic granules to promote cytotoxicity and prevent bystander killing. *J Cell Biol* (2016) 215(6):875–89. doi: 10.1083/jcb.201604136
13. Hammer JA, Wang J. C, Saeed M, Pedrosa A. T. Origin, Organization, Dynamics, and Function of Actin and Actomyosin Networks at the T Cell Immunological Synapse. *Annu Rev Immunol* (2019) 37:201–24. doi: 10.1146/annurev-immunol-042718-041341
14. Abolhassani H, Chou J, Bainter W, Platt C. D, Tavassoli M, Momen T, et al. Clinical, immunologic, and genetic spectrum of 696 patients with combined immunodeficiency. *J Allergy Clin Immunol*(2018) 141(4):1450–8. doi: 10.1016/j.jaci.2017.06.049
15. Mueller BU, Pizzo PA. Cancer in children with primary or secondary immunodeficiencies. *J Pediatr* (1995) 126(1):1–10. doi: 10.1016/S0022-3476(95)70491-4
16. Riaz IB, Faridi W, Patnaik MM, Abraham RS. A Systematic Review on Predisposition to Lymphoid (B and T cell) Neoplasias in Patients With Primary Immunodeficiencies and Immune Dysregulatory Disorders (Inborn Errors of Immunity). *Front Immunol* (2019) 10:777. doi: 10.3389/fimmu.2019.00777
17. Hauck F, Voss R, Urban C, Seidel MG. Intrinsic and extrinsic causes of malignancies in patients with primary immunodeficiency disorders. *J Allergy Clin Immunol* (2018) 141(1):59–68.e4. doi: 10.1016/j.jaci.2017.06.009
18. Froland S, Natvig JB, Berdal P. Surface-bound immunoglobulin as a marker of B lymphocytes in man. *Nat N Biol* (1971) 234(51):251–2. doi: 10.1038/newbio234251a0
19. Pillai S, Mattoo H, Cariappa A. B cells and autoimmunity. *Curr Opin Immunol* (2011) 23(6):721–31. doi: 10.1016/j.coi.2011.10.007
20. Brack C, Hirama M, Lenhard-Schuller R, Tonegawa S. A complete immunoglobulin gene is created by somatic recombination. *Cell* (1978) 15(1):1–14. doi: 10.1016/0092-8674(78)90078-8
21. Schatz DG, Oettinger MA, Baltimore D. The V(D)J recombination activating gene, RAG-1. *Cell* (1989) 59(6):1035–48. doi: 10.1016/0092-8674(89)90760-5
22. Oettinger MA, Schatz DG, Gorka C, Baltimore D. RAG-1 and RAG-2, adjacent genes that synergistically activate V(D)J recombination. *Science* (1990) 248(4962):1517–23. doi: 10.1126/science.2360047

23. Schatz DG, Baltimore D. Uncovering the V(D)J recombinase. *Cell* (2004) 116(2 Suppl):S103–6, 2 p following S106. doi: 10.1016/S0092-8674(04)00042-X
24. Gellert M. V(D)J recombination: RAG proteins, repair factors, and regulation. *Annu Rev Biochem* (2002) 71:101–32. doi: 10.1146/annurev.biochem.71.090501.150203
25. Ru H, Chambers MG, Fu TM, Tong AB, Liao M, Wu H. Molecular Mechanism of V(D)J Recombination from Synaptic RAG1-RAG2 Complex Structures. *Cell* (2015) 163(5):1138–52. doi: 10.1016/j.cell.2015.10.055
26. Gu J, Li S, Zhang X, Wang LC, Niewolik D, Schwarz K, et al. DNA-PKcs regulates a single-stranded DNA endonuclease activity of Artemis. *DNA Repair (Amst)* (2010) 9(4):429–37. doi: 10.1016/j.dnarep.2010.01.001
27. Rivera-Munoz P, Soulas-Spraul P, Le Guyader G, Abramowski V, Bruneau S, Fischer A, et al. Reduced immunoglobulin class switch recombination in the absence of Artemis. *Blood* (2009) 114(17):3601–9. doi: 10.1182/blood-2008-11-188383
28. Lieber MR. The mechanism of double-strand DNA break repair by the nonhomologous DNA end-joining pathway. *Annu Rev Biochem* (2010) 79:181–211. doi: 10.1146/annurev.biochem.052308.093131
29. Nussenzweig A, Nussenzweig MC. Origin of chromosomal translocations in lymphoid cancer. *Cell* (2010) 141(1):27–38. doi: 10.1016/j.cell.2010.03.016
30. Mostoslavsky R, Alt FW, Rajewsky K. The lingering enigma of the allelic exclusion mechanism. *Cell* (2004) 118(5):539–44. doi: 10.1016/j.cell.2004.08.023
31. De Silva NS, Klein U. Dynamics of B cells in germinal centres. *Nat Rev Immunol* (2015) 15(3):137–48. doi: 10.1038/nri3804
32. Gitlin AD, Shulman Z, Nussenzweig MC. Clonal selection in the germinal centre by regulated proliferation and hypermutation. *Nature* (2014) 509(7502):637–40. doi: 10.1038/nature13300
33. Revy P, Muto T, Levy Y, Geissmann F, Plebani A, Sanal O, et al. Activation-induced cytidine deaminase (AID) deficiency causes the autosomal recessive form of the Hyper-IgM syndrome (HIGM2). *Cell* (2000) 102(5):565–75. doi: 10.1016/S0092-8674(00)00079-9
34. Muramatsu M, Kinoshita K, Fagarasan S, Yamada S, Shinkai Y, Honjo T. Class switch recombination and hypermutation require activation-induced cytidine deaminase (AID), a potential RNA editing enzyme. *Cell* (2000) 102(5):553–63. doi: 10.1016/S0092-8674(00)00078-7
35. Muramatsu M, Sankaranand VS, Anant S, Sugai M, Kinoshita K, Davidson NO, et al. Specific expression of activation-induced cytidine deaminase (AID), a novel member of the RNA-editing deaminase family in germinal center B cells. *J Biol Chem* (1999) 274(26):18470–6. doi: 10.1074/jbc.274.26.18470
36. Rada C, Williams GT, Nilsen H, Barnes DE, Lindahl T, Neuberger MS. Immunoglobulin isotype switching is inhibited and somatic hypermutation perturbed in UNG-deficient mice. *Curr Biol* (2002) 12(20):1748–55. doi: 10.1016/S0960-9822(02)01215-0
37. He MH, Westerberg LS. Congenital Defects in Actin Dynamics of Germinal Center B Cells. *Front Immunol* (2019) 10:296. doi: 10.3389/fimmu.2019.00296
38. Durandy A, Kracker S, Fischer A. Primary antibody deficiencies. *Nat Rev Immunol* (2013) 13(7):519–33. doi: 10.1038/nri3466
39. Wardemann H, Yurasov S, Schaefer A, Young JW, Meffre E, Nussenzweig MC. Predominant autoantibody production by early human B cell precursors. *Science* (2003) 301(5638):1374–7. doi: 10.1126/science.1086907
40. Meffre E, Wardemann H. B-cell tolerance checkpoints in health and autoimmunity. *Curr Opin Immunol* (2008) 20(6):632–8. doi: 10.1016/j.coi.2008.09.001
41. Victora GD, Nussenzweig MC. Germinal centers. *Annu Rev Immunol* (2012) 30:429–57. doi: 10.1146/annurev-immunol-020711-075032
42. Okada T, Miller MJ, Parker I, Krummel MF, Neighbors M, Hartley SB, et al. Antigen-engaged B cells undergo chemotaxis toward the T zone and form motile conjugates with helper T cells. *PLoS Biol* (2005) 3(6):e150. doi: 10.1371/journal.pbio.0030150
43. Schwickert TA, Victora GD, Fooksman DR, Kamphorst AO, Mugnier MR, Gitlin AD, et al. A dynamic T cell-limited checkpoint regulates affinity-dependent B cell entry into the germinal center. *J Exp Med* (2011) 208(6):1243–52. doi: 10.1084/jem.20102477
44. Papa I, Vinuesa CG. Synaptic Interactions in Germinal Centers. *Front Immunol* (2018) 9:1858. doi: 10.3389/fimmu.2018.01858
45. Lau AW, Brink R. Selection in the germinal center. *Curr Opin Immunol* (2020) 63:29–34. doi: 10.1016/j.coi.2019.11.001
46. Ferrari S, Plebani A. Cross-talk between CD40 and CD40L: lessons from primary immune deficiencies. *Curr Opin Allergy Clin Immunol* (2002) 2(6):489–94. doi: 10.1097/00130832-200212000-00003
47. Banchereau J, Bazan F, Blanchard D, Briere F, Galizzi JP, Van Kooten C, et al. The CD40 antigen and its ligand. *Annu Rev Immunol* (1994) 12:881–922. doi: 10.1146/annurev.iy.12.040194.004313
48. Stavnezer J, Guikema JE, Schrader CE. Mechanism and regulation of class switch recombination. *Annu Rev Immunol* (2008) 26:261–92. doi: 10.1146/annurev.immunol.26.021607.090248
49. Zhang X, Zhang Y, Ba Z, Kyritsis N, Casellas R, Alt FW. Fundamental roles of chromatin loop extrusion in antibody class switching. *Nature* (2019) 575(7782):385–9. doi: 10.1038/s41586-019-1723-0
50. Shaffer AL, Young RM, Staudt LM. Pathogenesis of human B cell lymphomas. *Annu Rev Immunol* (2012) 30:565–610. doi: 10.1146/annurev-immunol-020711-075027
51. Robbiani DF, Nussenzweig MC. Chromosome translocation, B cell lymphoma, and activation-induced cytidine deaminase. *Annu Rev Pathol* (2013) 8:79–103. doi: 10.1146/annurev-pathol-020712-164004
52. Kloosterman WP, Tavakoli-Yaraki M, van Roosmalen MJ, Van Binsbergen E, Renkens I, Duran K, et al. Constitutional chromothripsis rearrangements involve clustered double-stranded DNA breaks and nonhomologous repair mechanisms. *Cell Rep* (2012) 1(6):648–55. doi: 10.1016/j.celrep.2012.05.009
53. Shannon-Lowe C, Rickinson AB, Bell AI. Epstein-Barr virus-associated lymphomas. *Philos Trans R Soc Lond B Biol Sci* (2017) 372(1732):20160271. doi: 10.1098/rstb.2016.0271
54. Moshous D, Callebaut I, De Chasseval R, Corneo B, Cavazzana-Calvo M, Le Deist F, et al. Artemis, a novel DNA double-strand break repair/V(D)J recombination protein, is mutated in human severe combined immune deficiency. *Cell* (2001) 105(2):177–86. doi: 10.1016/S0092-8674(01)00309-9
55. Andres SN, Vergnes A, Ristic D, Wyman C, Modesti M, Junop M. A human XRCC4-XLF complex bridges DNA. *Nucleic Acids Res* (2012) 40(4):1868–78. doi: 10.1093/nar/gks022
56. Buck D, Malivert L, De Chasseval R, Barraud A, Fondanèche M. C, Sanal O, et al. Cernunnos, a novel nonhomologous end-joining factor, is mutated in human immunodeficiency with microcephaly. *Cell* (2006) 124(2):287–99. doi: 10.1016/j.cell.2005.12.030
57. Zha S, Guo C, Boboila C, Oksenysh V, Cheng HL, Zhang Y, et al. ATM damage response and XLF repair factor are functionally redundant in joining DNA breaks. *Nature* (2011) 469(7329):250–4. doi: 10.1038/nature09604
58. Yan CT, Boboila C, Souza EK, Franco S, Hickernell TR, Murphy M, et al. IgH class switching and translocations use a robust non-classical end-joining pathway. *Nature* (2007) 449(7161):478–82. doi: 10.1038/nature06020
59. Savitsky K, Bar-Shira A, Gilad S, Rotman G, Ziv Y, Vanagaite L, et al. A single ataxia telangiectasia gene with a product similar to PI-3 kinase. *Science* (1995) 268(5218):1749–53. doi: 10.1126/science.7792600
60. Stewart GS, Stankovic T, Byrd PJ, Wechsler T, Miller ES, Huissoon A, et al. RIDDLE immunodeficiency syndrome is linked to defects in 53BP1-mediated DNA damage signaling. *Proc Natl Acad Sci U S A* (2007) 104(43):16910–5. doi: 10.1073/pnas.0708408104
61. Mohamed AJ, Yu L, Backesjo C. M, Vargas L, Faryal R, Aints A, et al. Bruton's tyrosine kinase (Btk): function, regulation, and transformation with special emphasis on the PH domain. *Immunol Rev* (2009) 228(1):58–73. doi: 10.1111/j.1600-065X.2008.00741.x
62. Minegishi Y, Coustan-Smith E, Rapalus L, Ersoy F, Campana D, Conley M. E. Mutations in Igalpha (CD79a) result in a complete block in B-cell development. *J Clin Invest* (1999) 104(8):1115–21. doi: 10.1172/JCI7696
63. Lee YN, Frugoni F, Dobbs K, Walter JE, Giliani S, Gennery AR, et al. A systematic analysis of recombination activity and genotype-phenotype correlation in human recombination-activating gene 1 deficiency. *J Allergy Clin Immunol* (2014) 133(4):1099–108. doi: 10.1016/j.jaci.2013.10.007

64. Gereige JD, Maglione PJ. Current Understanding and Recent Developments in Common Variable Immunodeficiency Associated Autoimmunity. *Front Immunol* (2019) 10:2753. doi: 10.3389/fimmu.2019.02753
65. Xu S, Tan JE, Wong EP, Manickam A, Ponniah S, Lam KP. B cell development and activation defects resulting in *xid*-like immunodeficiency in BLNK/SLP-65-deficient mice. *Int Immunol* (2000) 12(3):397–404. doi: 10.1093/intimm/12.3.397
66. Grimbacher B, Hutloff A, Schlesier M, Glocker E, Warnatz K, Drager R, et al. Homozygous loss of ICOS is associated with adult-onset common variable immunodeficiency. *Nat Immunol* (2003) 4(3):261–8. doi: 10.1038/ni902
67. He M, Westerberg LS. Congenital Defects in Actin Dynamics of Germinal Center B Cells. *Front Immunol* (2019) 10:296. doi: 10.3389/fimmu.2019.00296
68. Sherman MH, Kuraishy AI, Deshpande C, Hong JS, Cacalano NA, Gatti RA, et al. AID-induced genotoxic stress promotes B cell differentiation in the germinal center via ATM and LKB1 signaling. *Mol Cell* (2010) 39(6):873–85. doi: 10.1016/j.molcel.2010.08.019
69. Dahlberg CI, He M, Visnes T, Torres M. L, Cortizas E. M, Verdun R. E, et al. A novel mouse model for the hyper-IgM syndrome: a spontaneous activation-induced cytidine deaminase mutation leading to complete loss of Ig class switching and reduced somatic hypermutation. *J Immunol* (2014) 193(9):4732–8. doi: 10.1049/jimmunol.1401242
70. Izdebska M, Zielinska W, Grzanka D, Gagat M. The Role of Actin Dynamics and Actin-Binding Proteins Expression in Epithelial-to-Mesenchymal Transition and Its Association with Cancer Progression and Evaluation of Possible Therapeutic Targets. *BioMed Res Int* (2018) 2018:4578373. doi: 10.1155/2018/4578373
71. Stray-Pedersen A, Jouanguy E, Crequer A, Bertuch AA, Brown BS, Jhangiani SN, et al. Compound heterozygous CORO1A mutations in siblings with a mucocutaneous-immunodeficiency syndrome of epidermodysplasia verruciformis-HPV, molluscum contagiosum and granulomatous tuberculoid leprosy. *J Clin Immunol* (2014) 34(7):871–90. doi: 10.1007/s10875-014-0074-8
72. Latour S, Winter S. Inherited Immunodeficiencies With High Predisposition to Epstein-Barr Virus-Driven Lymphoproliferative Diseases. *Front Immunol* (2018) 9:1103. doi: 10.3389/fimmu.2018.01103
73. Lagresle-Peyrou C, Luce S, Ouchani F, Soheili TS, Sadek H, Chouteau M, et al. X-linked primary immunodeficiency associated with hemizygous mutations in the moesin (MSN) gene. *J Allergy Clin Immunol* (2016) 138(6):1681–9.e8. doi: 10.1016/j.jaci.2016.04.032
74. Chen Y, Meng F, Wang B, He L, Liu Y, Liu Z. Dock2 in the development of inflammation and cancer. *Eur J Immunol* (2018) 48(6):915–22. doi: 10.1002/eji.201747157
75. Biggs CM, Keles S, Chatila TA. DOCK8 deficiency: Insights into pathophysiology, clinical features and management. *Clin Immunol* (2017) 181:75–82. doi: 10.1016/j.clim.2017.06.003
76. Crequer A, Troeger A, Patin E, Ma CS, Picard C, Pedergnana V, et al. Human RHOA deficiency causes T cell defects and susceptibility to EV-HPV infections. *J Clin Invest* (2012) 122(9):3239–47. doi: 10.1172/JCI62949
77. Zhang T, Shen X, Liu R, Zhu G, Bishop J, Xing M. Epigenetically upregulated WIPF1 plays a major role in BRAF V600E-promoted papillary thyroid cancer aggressiveness. *Oncotarget* (2017) 8(1):900–14. doi: 10.18632/oncotarget.13400
78. O'Hayre M, Inoue A, Kufareva I, Wang Z, Mikelis CM, Drummond RA, et al. Inactivating mutations in GNA13 and RHOA in Burkitt's lymphoma and diffuse large B-cell lymphoma: a tumor suppressor function for the Gα13/RhoA axis in B cells. *Oncogene* (2016) 35(29):3771–80. doi: 10.1038/onc.2015.442
79. Yonkof JR, Gupta A, Rueda CM, Mangray S, Prince BT, Rangarajan HG, et al. A Novel Pathogenic Variant in CARMIL2 (RLTPR) Causing CARMIL2 Deficiency and EBV-Associated Smooth Muscle Tumors. *Front Immunol* (2020) 11:884–4. doi: 10.3389/fimmu.2020.00884
80. Scharenberg MA, Chiquet-Ehrismann R, Asparuhova MB. Megakaryoblastic leukemia protein-1 (MKL1): Increasing evidence for an involvement in cancer progression and metastasis. *Int J Biochem Cell Biol* (2010) 42(12):1911–4. doi: 10.1016/j.biocel.2010.08.014
81. Derry JM, Ochs HD, Francke U. Isolation of a novel gene mutated in Wiskott-Aldrich syndrome. *Cell* (1994) 79(5):following 922. doi: 10.1016/0092-8674(94)90528-2
82. Devriendt K, Kim AS, Mathijs G, Frints SG, Schwartz M, Van Den Oord JJ, et al. Constitutively activating mutation in WASP causes X-linked severe congenital neutropenia. *Nat Genet* (2001) 27(3):313–7. doi: 10.1038/85886
83. Ancliff PJ, Blundell MP, Cory GO, Calle Y, Worth A, Kempinski H, et al. Two novel activating mutations in the Wiskott-Aldrich syndrome protein result in congenital neutropenia. *Blood* (2006) 108(7):2182–9. doi: 10.1182/blood-2006-01-010249
84. Beel K, Cotter MM, Blatny J, Bond J, Lucas G, Green F, et al. A large kindred with X-linked neutropenia with an I294T mutation of the Wiskott-Aldrich syndrome gene. *Br J Haematol* (2009) 144(1):120–6. doi: 10.1111/j.1365-2141.2008.07416.x
85. Orange JS, Ramesh N, Remold-O'donnell E, Sasahara Y, Koopman L, Byrne M, et al. Wiskott-Aldrich syndrome protein is required for NK cell cytotoxicity and colocalizes with actin to NK cell-activating immunologic synapses. *Proc Natl Acad Sci U S A* (2002) 99(17):11351–6. doi: 10.1073/pnas.162376099
86. Kritikou JS, Dahlberg CII, Baptista MA, Wagner AK, Banerjee PP, Gwalani LA, et al. IL-2 in the tumor microenvironment is necessary for Wiskott-Aldrich syndrome protein deficient NK cells to respond to tumors in vivo. *Sci Rep* (2016) 6:30636. doi: 10.1038/srep30636
87. Orange JS, Roy-Ghanta S, Mace EM, Maru S, Rak GD, Sanborn KB, et al. IL-2 induces a WAVE2-dependent pathway for actin reorganization that enables WASp-independent human NK cell function. *J Clin Invest* (2011) 121(4):1535–48. doi: 10.1172/JCI44862
88. Westerberg L, Larsson M, Hardy SJ, Fernandez C, Thrasher AJ, Severinson E. Wiskott-Aldrich syndrome protein deficiency leads to reduced B-cell adhesion, migration, and homing, and a delayed humoral immune response. *Blood* (2005) 105(3):1144–52. doi: 10.1182/blood-2004-03-1003
89. Westerberg LS, Dahlberg C, Baptista M, Moran CJ, Detre C, Keszei M, et al. Wiskott-Aldrich syndrome protein (WASP) and N-WASP are critical for peripheral B-cell development and function. *Blood* (2012) 119(17):3966–74. doi: 10.1182/blood-2010-09-308197
90. Westerberg LS, De La Fuente MA, Wermeling F, Ochs HD, Karlsson MC, Snapper SB, et al. WASP confers selective advantage for specific hematopoietic cell populations and serves a unique role in marginal zone B-cell homeostasis and function. *Blood* (2008) 112(10):4139–47. doi: 10.1182/blood-2008-02-140715
91. Dahlberg CI, Torres ML, Petersen SH, Baptista MA, Keszei M, Volpi S, et al. Deletion of WASp and N-WASP in B cells cripples the germinal center response and results in production of IgM autoantibodies. *J Autoimmun* (2015) 62:81–92. doi: 10.1016/j.jaut.2015.06.003
92. Volpi S, Cicalese MP, Tuijnburg P, Tool ATJ, Cuadrado E, Abu-Halaweh M, et al. A combined immunodeficiency with severe infections, inflammation, and allergy caused by ARPC1B deficiency. *J Allergy Clin Immunol* (2019) 143(6):2296–9. doi: 10.1016/j.jaci.2019.02.003
93. Castiello MC, Bosticardo M, Pala F, Catucci M, Chamberlain N, VAN Zelm MC, et al. Wiskott-Aldrich Syndrome protein deficiency perturbs the homeostasis of B-cell compartment in humans. *J Autoimmun* (2014) 50:42–50. doi: 10.1016/j.jaut.2013.10.006
94. Meyer-Bahlburg A, Becker-Herman S, Humblet-Baron S, Khim S, Weber M, Bouma G, et al. Wiskott-Aldrich syndrome protein deficiency in B cells results in impaired peripheral homeostasis. *Blood* (2008) 112(10):4158–69. doi: 10.1182/blood-2008-02-140814
95. Cotta-de-Almeida V, Westerberg L, Maillard MH, Onaldi D, Wachtel H, Meelu P, et al. Wiskott Aldrich syndrome protein (WASP) and N-WASP are critical for T cell development. *Proc Natl Acad Sci U S A* (2007) 104(39):15424–9. doi: 10.1073/pnas.0706881104
96. Humblet-Baron S, Sather B, Anover S, Becker-Herman S, Kasprovicz DJ, Khim S, et al. Wiskott-Aldrich syndrome protein is required for regulatory T cell homeostasis. *J Clin Invest* (2007) 117(2):407–18. doi: 10.1172/JCI29539
97. Maillard MH, Cotta-De-Almeida V, Takeshima F, Nguyen DD, Michetti P, Nagler C, et al. The Wiskott-Aldrich syndrome protein is required for the function of CD4(+)CD25(+)Foxp3(+) regulatory T cells. *J Exp Med* (2007) 204(2):381–91. doi: 10.1084/jem.20061338
98. Imai K, Morio T, Zhu Y, Jin Y, Itoh S, Kajiwara M, et al. Clinical course of patients with WASP gene mutations. *Blood* (2004) 103(2):456–64. doi: 10.1182/blood-2003-05-1480

99. Sullivan KE, Mullen CA, Blaese RM, Winkelstein JA. A multiinstitutional survey of the Wiskott-Aldrich syndrome. *J Pediatr* (1994) 125(6 Pt 1):876–85. doi: 10.1016/S0022-3476(05)82002-5
100. Tran H, Nourse J, Hall S, Green M, Griffiths L, Gandhi MK. Immunodeficiency-associated lymphomas. *Blood Rev* (2008) 22(5):261–81. doi: 10.1016/j.blre.2008.03.009
101. Du S, Scuderi R, Malicki DM, Willert J, Bastian J, Weidner N. Hodgkin's and non-Hodgkin's lymphomas occurring in two brothers with Wiskott-Aldrich syndrome and review of the literature. *Pediatr Dev Pathol* (2011) 14(1):64–70. doi: 10.2350/10-01-0787-CR.1
102. Filipovich AH, Chandrakasan S. Pathogenesis of Hemophagocytic Lymphohistiocytosis. *Hematol Oncol Clin North Am* (2015) 29(5):895–902. doi: 10.1016/j.hoc.2015.06.007
103. Salavoura K, Kolialexi A, Tsangaris G, Mavrou A. Development of cancer in patients with primary immunodeficiencies. *Anticancer Res* (2008) 28(2B):1263–9.
104. Worth AJ, Thrasher AJ. Current and emerging treatment options for Wiskott-Aldrich syndrome. *Expert Rev Clin Immunol* (2015) 11(9):1015–32. doi: 10.1586/1744666X.2015.1062366
105. Yoshimi A, Kamachi Y, Imai K, Watanabe N, Nakadate H, Kanazawa T, et al. Wiskott-Aldrich syndrome presenting with a clinical picture mimicking juvenile myelomonocytic leukaemia. *Pediatr Blood Cancer* (2013) 60(5):836–41. doi: 10.1002/pbc.24359
106. Catucci M, Zanon I, Draghici E, Bosticardo M, Castiello M. C, Venturini M, et al. Wiskott-Aldrich syndrome protein deficiency in natural killer and dendritic cells affects antitumor immunity. *Eur J Immunol* (2014) 44(4):1039–45. doi: 10.1002/eji.201343935
107. Keszei M, Kritikou J, S, Sandfort D, He M, Oliveira M. M. S, Wurzer H, et al. Wiskott-Aldrich syndrome gene mutations modulate cancer susceptibility in the p53(+/-) murine model. *Oncoimmunology* (2018) 7(9):e1468954. doi: 10.1080/2162402X.2018.1468954
108. Wen KK, Han SS, Vyas YM. Wiskott-Aldrich syndrome protein senses irradiation-induced DNA damage to coordinate the cell-protective Golgi dispersal response in human T and B lymphocytes. *J Allergy Clin Immunol* (2020) 145(1):324–34. doi: 10.1016/j.jaci.2019.09.026
109. Sarkar K, Han SS, Wen KK, Ochs HD, Dupre L, Seidman MM, et al. R-loops cause genomic instability in T helper lymphocytes from patients with Wiskott-Aldrich syndrome. *J Allergy Clin Immunol* (2018) 142(1):219–34. doi: 10.1016/j.jaci.2017.11.023
110. Menotti M, Ambrogio C, Cheong TC, Pighi C, Mota I, Cassel SH, et al. Wiskott-Aldrich syndrome protein (WASP) is a tumor suppressor in Tcell lymphoma. *Nat Med* (2019) 25(1):130–40. doi: 10.1038/s41591-018-0262-9
111. Coppe A, Nogara L, Pizzuto MS, Cani A, Cesaro S, Masetti R, et al. Somatic mutations activating Wiskott-Aldrich syndrome protein concomitant with RAS pathway mutations in juvenile myelomonocytic leukemia patients. *Hum Mutat* (2018) 39(4):579–87. doi: 10.1002/humu.23399
112. Massaad MJ, Ramesh N, Geha RS. Wiskott-Aldrich syndrome: a comprehensive review. *Ann N Y Acad Sci* (2013) 1285:26–43. doi: 10.1111/nyas.12049
113. Padrick SB, Rosen MK. Physical mechanisms of signal integration by WASP family proteins. *Annu Rev Biochem* (2010) 79:707–35. doi: 10.1146/annurev.biochem.77.060407.135452
114. Gachet Y, Tournier S, Millar JB, Hyams JS. A MAP kinase-dependent actin checkpoint ensures proper spindle orientation in fission yeast. *Nature* (2001) 412(6844):352–5. doi: 10.1038/35085604
115. Ganem NJ, Pellman D. Limiting the proliferation of polyploid cells. *Cell* (2007) 131(3):437–40. doi: 10.1016/j.cell.2007.10.024
116. Bendris N, Lemmers B, Blanchard JM. Cell cycle, cytoskeleton dynamics and beyond: the many functions of cyclins and CDK inhibitors. *Cell Cycle* (2015) 14(12):1786–98. doi: 10.1080/15384101.2014.998085
117. Moulding DA, Blundell MP, Spiller DG, White MR, Cory GO, Calle Y, et al. Unregulated actin polymerization by WASp causes defects of mitosis and cytokinesis in X-linked neutropenia. *J Exp Med* (2007) 204(9):2213–24. doi: 10.1084/jem.20062324
118. Moulding DA, Moeendarbary E, Valon L, Record J, Charras GT, Thrasher AJ. Excess F-actin mechanically impedes mitosis leading to cytokinesis failure in X-linked neutropenia by exceeding Aurora B kinase error correction capacity. *Blood* (2012) 120(18):3803–11. doi: 10.1182/blood-2012-03-419663
119. Westerberg LS, Meelu P, Baptista M, Eston MA, Adamovich DA, Cotta-De-Almeida V, et al. Activating WASP mutations associated with X-linked neutropenia result in enhanced actin polymerization, altered cytoskeletal responses, and genomic instability in lymphocytes. *J Exp Med* (2010) 207(6):1145–52. doi: 10.1084/jem.20091245
120. Trifari S, Sitia G, Aiuti A, Scaramuzza S, Marangoni F, Guidotti LG, et al. Defective Th1 cytokine gene transcription in CD4+ and CD8+ T cells from Wiskott-Aldrich syndrome patients. *J Immunol* (2006) 177(10):7451–61. doi: 10.4049/jimmunol.177.10.7451
121. Kumari S, Depoil D, Martinelli R, Judokusumo E, Carmona G, Gertler FB, et al. Actin foci facilitate activation of the phospholipase C-g in primary Tlymphocytes via the WASP pathway. *Elife* (2015) 4:e04953.
122. Kumari S, Mak M, Poh YC, Tohme M, Watson N, Melo M, et al. DJCytoskeletal tension actively sustains the migratory T-cellsynaptic contact. *EMBO J* (2020) 39(5):e102783. doi: 10.15252/embj.2019102783
123. Houmadi R, Guipouy D, Rey-Barroso J, Vasconcelos Z, Cornet J, Manghi M, et al. The Wiskott-Aldrich Syndrome Protein Contributes to the Assembly of the LFA-1 Nanocluster Belt at the Lytic Synapse. *Cell Rep* (2018) 22(4):979–91. doi: 10.1016/j.celrep.2017.12.088
124. Sadhukhan S, Sarkar K, Taylor M, Candotti F, Vyas YM. Nuclear role of WASp in gene transcription is uncoupled from its ARP2/3-dependent cytoplasmic role in actin polymerization. *J Immunol* (2014) 193(1):150–60. doi: 10.4049/jimmunol.1302923
125. Taylor MD, Sadhukhan S, Kottangada P, Ramgopal A, Sarkar K, D'silva S, et al. Nuclear role of WASp in the pathogenesis of dysregulated TH1 immunity in human Wiskott-Aldrich syndrome. *Sci Transl Med* (2010) 2(37):37ra44. doi: 10.1126/scitranslmed.3000813
126. Kuznetsov NV, Almuzzaini B, Kritikou JS, Baptista MAP, Oliveira MMS, Keszei M, et al. Nuclear Wiskott-Aldrich syndrome protein co-regulates T cell factor 1-mediated transcription in T cells. *Genome Med* (2017) 9(1):91. doi: 10.1186/s13073-017-0481-6
127. Percipalle P, Vartiainen M. Cytoskeletal proteins in the cell nucleus: a special nuclear actin perspective. *Mol Biol Cell* (2019) 30(15):1781–5. doi: 10.1091/mbc.E18-10-0645
128. Caridi CP, D'agostino C, Ryu T, Zapotoczny G, Delabaere L, Li X, et al. Nuclear F-actin and myosins drive relocalization of heterochromatic breaks. *Nature* (2018) 559(7712):54–60. doi: 10.1038/s41586-018-0242-8
129. Schrank BR, Aparicio T, Li Y, Chang W, Chait BT, Gundersen GG, et al. Nuclear ARP2/3 drives DNA break clustering for homology-directed repair. *Nature* (2018) 559(7712):61–6. doi: 10.1038/s41586-018-0237-5
130. Wei M, Fan X, Ding M, Li R, Shao S, Hou Y, et al. Nuclear actin regulates inducible transcription by enhancing RNA polymerase II clustering. *Sci Adv* (2020) 6(16):eaay6515. doi: 10.1126/sciadv.aay6515
131. Tsooulidis N, Kaw S, Laketa V, Kutscheid S, Baarlink C, Stolp B, et al. T cell receptor-triggered nuclear actin network formation drives CD4(+) T cell effector functions. *Sci Immunol* (2019) 4(31):eaav1987. doi: 10.1126/sciimmunol.aav1987
132. Chang W, Worman HJ, Gundersen GG. Accessorizing and anchoring the LINC complex for multifunctionality. *J Cell Biol* (2015) 208(1):11–22. doi: 10.1083/jcb.201409047
133. Hegarat N, Aurora A. and Aurora B jointly coordinate chromosome segregation and anaphase microtubule dynamics. *J Cell Biol* (2011) 195(7):1103–13. doi: 10.1083/jcb.201105058
134. Liu D, Vader G, Vromans MJ, Lampson MA, Lens SM. Sensing chromosome bi-orientation by spatial separation of aurora B kinase from kinetochore substrates. *Science* (2009) 323(5919):1350–3. doi: 10.1126/science.1167000
135. Yang J, Ikezoe T, Nishioka C, Tasaka T, Taniguchi A, Kuwayama Y, et al. AZD1152, a novel and selective aurora B kinase inhibitor, induces growth arrest, apoptosis, and sensitization for tubulin depolymerizing agent or topoisomerase II inhibitor in human acute leukemia cells in vitro and in vivo. *Blood* (2007) 110(6):2034–40. doi: 10.1182/blood-2007-02-073700
136. Nair JS, Ho AL, Tse AN, Coward J, Cheema H, Ambrosini G, et al. Aurora B kinase regulates the postmitotic endoreduplication checkpoint via phosphorylation of the retinoblastoma protein at serine 780. *Mol Biol Cell* (2009) 20(8):2218–28. doi: 10.1091/mbc.e08-08-0885

137. Record J, Malinova D, Zenner HL, Plagnol V, Nowak K, Syed F, et al. Immunodeficiency and severe susceptibility to bacterial infection associated with a loss-of-function homozygous mutation of MKL1. *Blood* (2015) 126(13):1527–35. doi: 10.1182/blood-2014-12-611012
138. Record J, Sendel A, Kritikou JS, Kuznetsov NV, Brauner H, He M, et al. An intronic deletion in megakaryoblastic leukemia 1 is associated with hyperproliferation of B cells in triplets with Hodgkin lymphoma. *Haematologica* (2020) 105(5):1339–50. doi: 10.3324/haematol.2019.216317
139. Janssen E, Geha RS. Primary immunodeficiencies caused by mutations in actin regulatory proteins. *Immunol Rev* (2019) 287(1):121–34. doi: 10.1111/imr.12716
140. Tangye SG, Bucciol G, Casas-Martin J, Pillay B, Ma CS, Moens L, et al. Human inborn errors of the actin cytoskeleton affecting immunity: way beyond WAS and WIP. *Immunol Cell Biol* (2019) 97(4):389–402. doi: 10.1111/imcb.12243
141. Gomez TS, Kumar K, Medeiros RB, Shimizu Y, Leibson PJ, Billadeau DD. Formins regulate the actin-related protein 2/3 complex-independent polarization of the centrosome to the immunological synapse. *Immunity* (2007) 26(2):177–90. doi: 10.1016/j.immuni.2007.01.008
142. Murugesan S, Hong J, Yi J, Li D, Beach JR, Shao L, et al. Formin-generated actomyosin arcs propel T cell receptor microcluster movement at the immune synapse. *J Cell Biol* (2016) 215(3):383–99. doi: 10.1083/jcb.201603080
143. Thumkeo D, Katsura Y, Nishimura Y, Kanchanawong P, Tohyama K, Ishizaki T, et al. mDia1/3-dependent actin polymerization spatiotemporally controls LAT phosphorylation by Zap70 at the immune synapse. *Sci Adv* (2020) 6(1):eay2432. doi: 10.1126/sciadv.aay2432
144. Fried S, Matalon O, Noy E, Barda-Saad M. WIP: more than a WASp-interacting protein. *J Leukoc Biol* (2014) 96(5):713–27. doi: 10.1189/jlb.2RU0314-162R
145. Fathi M, Shahraki H, Sharif Rahmani E, Rahimi H, Omid P, Darvishi S, et al. Whole Exome Sequencing of an X-linked Thrombocytopenia Patient with Normal Sized Platelets. *Avicenna J Med Biotechnol* (2019) 11(3):253–8.
146. Jain N, George B, Thanabalu T. Wiskott-Aldrich Syndrome causing mutation, Pro373Ser restricts conformational changes essential for WASP activity in T-cells. *Biochim Biophys Acta* (2014) 1842(4):623–34. doi: 10.1016/j.bbdis.2014.01.006
147. Cannon JL, Labno C. M, Bosco G, Seth A, Mcgavin M. H, Siminovitch K. A, et al. Wasp recruitment to the T cell: APC contact site occurs independently of Cdc42 activation. *Immunity* (2001) 15(2):249–59. doi: 10.1016/S1074-7613(01)00178-9
148. Badour K, Zhang J, Shi F, Leng Y, Collins M, Siminovitch K. A. Fyn and PTP-PEST-mediated regulation of Wiskott-Aldrich syndrome protein (WASP) tyrosine phosphorylation is required for coupling T cell antigen receptor engagement to WASP effector function and T cell activation. *J Exp Med* (2004) 199(1):99–112. doi: 10.1084/jem.20030976
149. Janssen WJM, Grobarova V, Leleux J, Jongeneel L, van Gijn M, van Montfrans JM, et al. Proline-serine-threonine phosphatase interacting protein 1 (PSTPIP1) controls immune synapse stability in human T cells. *Allergy Clin Immunol* (2018) 142(6): 1947–55. doi: 10.1016/j.jaci.2018.01.030
150. Sasahara Y, Rachid R, Byrne MJ, De La Fuente MA, Abraham RT, Ramesh N, et al. Mechanism of recruitment of WASP to the immunological synapse and of its activation following TCR ligation. *Mol Cell* (2002) 10(6):1269–81. doi: 10.1016/S1097-2765(02)00728-1
151. Zheng P, Noroski LM, Hanson IC, Chen Y, Lee ME, Huang Y, et al. Molecular mechanisms of functional natural killer deficiency in patients with partial DiGeorge syndrome. *J Allergy Clin Immunol* (2015) 135(5):1293–302. doi: 10.1016/j.jaci.2015.01.011
152. Giacomelli M, Soresina A, Tamassia N, Lorenzini T, Moratto D, et al. Reduction of CRKL expression in patients with partial DiGeorge syndrome is associated with impairment of T-cell functions. *J Allergy Clin Immunol* (2016) 138(1):229–40.e3. doi: 10.1016/j.jaci.2015.10.051
153. Gu Y, Chae HD, Siefing JE, Jasti AC, Hildeman DA, Williams DA. RhoGTPase recruits and activates Zap70 required for T cell receptor signaling and thymocyte development. *Nat Immunol* (2006) 7(11):1182–90. doi: 10.1038/ni1396
154. Hauck F, Blumenthal B, Fuchs S, Lenoir C, Martin E, Speckmann C, et al. SYK expression endows human ZAP70-deficient CD8 T cells with residual TCR signaling. *Clin Immunol* (2015) 161(2):103–9. doi: 10.1016/j.clim.2015.07.002
155. Tangye SG, Al-Herz W, Bousfiha A, Chatila T, Cunningham-Rundles C, Etzioni A, et al. Correction to: Human Inborn Errors of Immunity: 2019 Update on the Classification from the International Union of Immunological Societies Expert Committee. *J Clin Immunol* (2020) 40(1):65. doi: 10.1007/s10875-020-00763-0
156. Pfäfler L, Mair NK, Jimenez-Heredia R, Genel F, Gulez N, Ardeniz O, et al. Mutations affecting the actin regulator WD repeat-containing protein 1 lead to aberrant lymphoid immunity. *J Allergy Clin Immunol* (2018) 142(5):1589–604.e11. doi: 10.1016/j.jaci.2018.04.023
157. Bouma G, Mendoza-Naranjo A, Blundell MP, De Falco E, Parsley KL, Burns SO, et al. Cytoskeletal remodeling mediated by WASp in dendritic cells is necessary for normal immune synapse formation and T-cell priming. *Blood* (2011) 118(9):2492–501. doi: 10.1182/blood-2011-03-340265
158. Pulecio J, Tagliani E, Scholer A, Prete F, Fetler L, Burrone OR, et al. Expression of Wiskott-Aldrich syndrome protein in dendritic cells regulates synapse formation and activation of naive CD8+ T cells. *J Immunol* (2008) 181(2):1135–42. doi: 10.4049/jimmunol.181.2.1135
159. Baptista MA, Keszei M, Oliveira M, Sunahara KK, Andersson J, Dahlberg CII, et al. Deletion of Wiskott-Aldrich syndrome protein triggers Rac2 activity and increased cross-presentation by dendritic cells. *Nat Commun* (2016) 7:12175. doi: 10.1038/ncomms12175
160. Baptista MAP, Westerberg LS. Activation of compensatory pathways via Rac2 in the absence of the Cdc42 effector Wiskott-Aldrich syndrome protein in Dendritic cells. *Small GTPases* (2019) 10(2):81–8. doi: 10.1080/21541248.2016.1275363
161. Calvez R, Lafouresse F, De Meester J, Galy A, Valitutti S, Dupre L. The Wiskott-Aldrich syndrome protein permits assembly of a focused immunological synapse enabling sustained T-cell receptor signaling. *Haematologica* (2011) 96(10):1415–23. doi: 10.3324/haematol.2011.040204
162. Huang M, Pring M, Yang C, Taoka M, Zigmund SH. Presence of a novel inhibitor of capping protein in neutrophil extract. *Cell Motil Cytoskeleton* (2005) 62(4):232–43. doi: 10.1002/cm.20097
163. Macian F. NFAT proteins: key regulators of T-cell development and function. *Nat Rev Immunol* (2005) 5(6):472–84. doi: 10.1038/nri1632
164. Gerondakis S, Siebenlist U. Roles of the NF-kappaB pathway in lymphocyte development and function. *Cold Spring Harb Perspect Biol* (2010) 2(5):a000182. doi: 10.1101/cshperspect.a000182
165. Jyonouchi S, Gwafila B, Gwalani LA, Ahmad M, Moertel C, Holbert C, et al. Phase I trial of low-dose interleukin 2 therapy in patients with Wiskott-Aldrich syndrome. *Clin Immunol* (2017) 179:47–53. doi: 10.1016/j.clim.2017.02.001
166. Dupre L, Marangoni F, Scaramuzza S, Trifari S, Hernandez RJ, Aiuti A, et al. Efficacy of gene therapy for Wiskott-Aldrich syndrome using a WAS promoter/cDNA-containing lentiviral vector and nonlethal irradiation. *Hum Gene Ther* (2006) 17(3):303–13. doi: 10.1089/hum.2006.17.303
167. Trifari S, Scaramuzza S, Catucci M, Ponzoni M, Mollica L, Chiesa R, et al. Revertant T lymphocytes in a patient with Wiskott-Aldrich syndrome: analysis of function and distribution in lymphoid organs. *J Allergy Clin Immunol* (2010) 125(2):439–48.e8. doi: 10.1016/j.jaci.2009.11.034
168. Randzavola LO, Strege K, Juzans M, Asano Y, Stinchcombe JC, Gawden-Bone CM, et al. Loss of ARPC1B impairs cytotoxic T lymphocyte maintenance and cytolytic activity. *J Clin Invest* (2019) 129(12):5600–14. doi: 10.1172/JCI129388
169. Brigida I, Zoccolillo M, Cicalese MP, Pfäfler L, Barzaghi F, Scala S, et al. T-cell defects in patients with ARPC1B germline mutations account for combined immunodeficiency. *Blood* (2018) 132(22):2362–74. doi: 10.1182/blood-2018-07-863431
170. Walling BL, Kim M. LFA-1 in T Cell Migration and Differentiation. *Front Immunol* (2018) 9:952. doi: 10.3389/fimmu.2018.00952
171. Comrie WA, Babich A, Burkhardt JK. F-actin flow drives affinity maturation and spatial organization of LFA-1 at the immunological synapse. *J Cell Biol* (2015) 208(4):475–91. doi: 10.1083/jcb.201406121
172. Ham H, Guerrier S, Kim J, Schoon RA, Anderson EL, Hamann MJ, et al. Dedicator of cytokinesis 8 interacts with talin and Wiskott-Aldrich syndrome protein to regulate NK cell cytotoxicity. *J Immunol* (2013) 190(7):3661–9. doi: 10.4049/jimmunol.1202792

173. Mizesko MC, Banerjee PP, Monaco-Shawver L, Mace EM, Bernal WE, Sawalle-Belohradsky J, et al. Defective actin accumulation impairs human natural killer cell function in patients with dedicator of cytokinesis 8 deficiency. *J Allergy Clin Immunol* (2013) 131(3):840–8. doi: 10.1016/j.jaci.2012.12.1568
174. Randall KL, Chan S. S, Ma C. S, Fung I, Mei Y, Yabas M, et al. DOCK8 deficiency impairs CD8 T cell survival and function in humans and mice. *J Exp Med* (2011) 208(11):2305–20. doi: 10.1084/jem.20110345
175. Kallikourdis M, Trovato AE, Anselmi F, Sarukhan A, Roselli G, Tassone L, et al. The CXCR4 mutations in WHIM syndrome impair the stability of the T-cell immunologic synapse. *Blood* (2013) 122(5):666–73. doi: 10.1182/blood-2012-10-461830
176. Kinashi T. Intracellular signalling controlling integrin activation in lymphocytes. *Nat Rev Immunol* (2005) 5(7):546–59. doi: 10.1038/nri1646
177. Sun Z, Costell M, Fassler R. Integrin activation by talin, kindlin and mechanical forces. *Nat Cell Biol* (2019) 21(1):25–31. doi: 10.1038/s41556-018-0234-9
178. Feigelson SW, Grabovsky V, Manevich-Mendelson E, Pasvolosky R, Shulman Z, Shinder V, et al. Kindlin-3 is required for the stabilization of TCR-stimulated LFA-1:ICAM-1 bonds critical for lymphocyte arrest and spreading on dendritic cells. *Blood* (2011) 117(26):7042–52. doi: 10.1182/blood-2010-12-322859
179. McDowall A, Svensson L, Stanley P, Patzak I, Chakravarty P, Howarth K, et al. Two mutations in the KINDLIN3 gene of a new leukocyte adhesion deficiency III patient reveal distinct effects on leukocyte function in vitro. *Blood* (2010) 115(23):4834–42. doi: 10.1182/blood-2009-08-238709
180. Nolz JC, Medeiros RB, Mitchell JS, Zhu P, Freedman BD, Shimizu Y, et al. WAVE2 regulates high-affinity integrin binding by recruiting vinculin and talin to the immunological synapse. *Mol Cell Biol* (2007) 27(17):5986–6000. doi: 10.1128/MCB.00136-07
181. Cheng J, Jing Y, Kang D, Yang L, Li J, Yu Z, et al. The Role of Mst1 in Lymphocyte Homeostasis and Function. *Front Immunol* (2018) 9:149. doi: 10.3389/fimmu.2018.00149
182. Hong L, Li X, Zhou D, Geng J, Chen L. Role of Hippo signaling in regulating immunity. *Cell Mol Immunol* (2018) 15(12):1003–9. doi: 10.1038/s41423-018-0007-1
183. Kondo N, Ueda Y, Kita T, Ozawa M, Tomiyama T, Yasuda K, et al. NDR1-Dependent Regulation of Kindlin-3 Controls High-Affinity LFA-1 Binding and Immune Synapse Organization. *Mol Cell Biol* (2017) 37(8):e00424–16. doi: 10.1128/MCB.00424-16
184. Dang TS, Willet JD, Griffin HR, Morgan NV, O'boyle G, Arkwright PD, et al. Defective Leukocyte Adhesion and Chemotaxis Contributes to Combined Immunodeficiency in Humans with Autosomal Recessive MST1 Deficiency. *J Clin Immunol* (2016) 36(2):117–22. doi: 10.1007/s10875-016-0232-2
185. de Saint Basile G, Menasche G, Fischer A. Molecular mechanisms of degenesis and exocytosis of cytotoxic granules. *Nat Rev Immunol* (2010) 10(8):568–79. doi: 10.1038/nri2803
186. Cai H, Reinisch K, Ferro-Novick S. Coats, tethers, Rab, and SNAREs work together to mediate the intracellular destination of a transport vesicle. *Dev Cell* (2007) 12(5):671–82. doi: 10.1016/j.devcel.2007.04.005
187. Phatarpekar PV, Billadeau DD. Molecular regulation of the plasma membrane-proximal cellular steps involved in NK cell cytolytic function. *J Cell Sci* (2020) 133(5):jcs240424. doi: 10.1242/jcs.240424
188. Hong W. Cytotoxic T lymphocyte exocytosis: bring on the SNAREs! *Trends Cell Biol* (2005) 15(12):644–50. doi: 10.1016/j.tcb.2005.10.003
189. Mentlik AN, Sanborn KB, Holzbaur EL, Orange JS. Rapid lytic granule convergence to the MTOC in natural killer cells is dependent on dynein but not cytolytic commitment. *Mol Biol Cell* (2010) 21(13):2241–56. doi: 10.1091/mbc.e09-11-0930
190. Daniele T, Hackmann Y, Ritter AT, Wenham M, Booth S, Bossi G, et al. A role for Rab7 in the movement of secretory granules in cytotoxic T lymphocytes. *Traffic* (2011) 12(7):902–11. doi: 10.1111/j.1600-0854.2011.01194.x
191. Quann EJ, Merino E, Furuta T, Huse M. Localized diacylglycerol drives the polarization of the microtubule-organizing center in T cells. *Nat Immunol* (2009) 10(6):627–35. doi: 10.1038/ni.1734
192. Kabanova A, Zurli V, Baldari CT. Signals Controlling Lytic Granule Polarization at the Cytotoxic Immune Synapse. *Front Immunol* (2018) 9:307. doi: 10.3389/fimmu.2018.00307
193. Howe MK, Dowdell K, Roy A, Niemela JE, Wilson W, Mcelwee JJ, et al. Magnesium Restores Activity to Peripheral Blood Cells in a Patient With Functionally Impaired Interleukin-2-Inducible T Cell Kinase. *Front Immunol* (2019) 10:2000. doi: 10.3389/fimmu.2019.02000
194. Kapnick SM, Stinchcombe JC, Griffiths GM, Schwartzberg PL. Inducible T Cell Kinase Regulates the Acquisition of Cytolytic Capacity and Degranulation in CD8(+) CTLs. *J Immunol* (2017) 198(7):2699–711. doi: 10.4049/jimmunol.1601202
195. Chauveau A, Le Floch A, Bantilan NS, Koretzky GA, Huse M, et al. Diacylglycerol kinase alpha establishes T cell polarity by shaping diacylglycerol accumulation at the immunological synapse. *Sci Signal* (2014) 7(340):ra82. doi: 10.1126/scisignal.2005287
196. Ruiz-Garcia R, Vargas-Hernandez A, Chinn IK, Angelo LS, Cao TN, Coban-Akdemir Z, et al. Mutations in PI3K110delta cause impaired natural killer cell function partially rescued by rapamycin treatment. *J Allergy Clin Immunol* (2018) 142(2):605–17.e7. doi: 10.1016/j.jaci.2017.11.042
197. Lougaris V, Patrizi O, Baronio M, Tabellini G, Tampella G, Lanzi G, et al. p85alpha is an intrinsic regulator of human natural killer cell effector functions. *J Allergy Clin Immunol* (2016) 138(2):605–8.e3. doi: 10.1016/j.jaci.2016.01.026
198. Cura Daball P, Ventura Ferreira MS, Ammann S, Klemann C, Lorenz MR, Warthorst U, et al. CD57 identifies T cells with functional senescence before terminal differentiation and relative telomere shortening in patients with activated PI3 kinase delta syndrome. *Immunol Cell Biol* (2018) 96(10):1060–71. doi: 10.1111/imcb.12169
199. Le Floch A, Tanaka Y, Bantilan NS, Voisinne G, Altan-Bonnet G, Fukui Y. Annular PIP3 accumulation controls actin architecture and modulates cytotoxicity at the immunological synapse. *J Exp Med* (2013) 210(12):2721–37. doi: 10.1084/jem.20131324
200. Sakai Y, Tanaka Y, Yanagihara T, Watanabe M, Duan X, Terasawa M, et al. The Rac activator DOCK2 regulates natural killer cell-mediated cytotoxicity in mice through the lytic synapse formation. *Blood* (2013) 122(3):386–93. doi: 10.1182/blood-2012-12-475897
201. Dobbs K, Dominguez Conde C, Zhang S. Y, Parolini S, Audry M, Chou J, et al. Inherited DOCK2 Deficiency in Patients with Early-Onset Invasive Infections. *N Engl J Med* (2015) 372(25):2409–22. doi: 10.1056/NEJMoa1413462
202. Baldanzi G, Pighini A, Bettio V, Rainero E, Traini S, Chianale F, et al. SAP-mediated inhibition of diacylglycerol kinase alpha regulates TCR-induced diacylglycerol signaling. *J Immunol* (2011) 187(11):5941–51. doi: 10.4049/jimmunol.1002476
203. Parolini S, Bottino C, Falco M, Augugliaro R, Giliani S, Franceschini R, et al. X-linked lymphoproliferative disease. 2B4 molecules displaying inhibitory rather than activating function are responsible for the inability of natural killer cells to kill Epstein-Barr virus-infected cells. *J Exp Med* (2000) 192(3):337–46. doi: 10.1084/jem.192.3.337
204. Meazza R, Tuberosa C, Cetica V, Falco M, Parolini S, Grieve S, et al. Diagnosing XLP1 in patients with hemophagocytic lymphohistiocytosis. *J Allergy Clin Immunol* (2014) 134(6):1381–7.e7. doi: 10.1016/j.jaci.2014.04.043
205. Panchal N, Booth C, Cannons JL, Schwartzberg PL. X-Linked Lymphoproliferative Disease Type 1: A Clinical and Molecular Perspective. *Front Immunol* (2018) 9:666. doi: 10.3389/fimmu.2018.00666
206. Ruffo E, Malacarne V, Larsen SE, Das R, Patrussi L, Wulffing C, et al. Inhibition of diacylglycerol kinase alpha restores restimulation-induced cell death and reduces immunopathology in XLP-1. *Sci Transl Med* (2016) 8(321):321ra7. doi: 10.1126/scitranslmed.aad1565
207. Porciello N, Kunkl M, Viola A, Tuosto L. Phosphatidylinositol 4-Phosphate 5-Kinases in the Regulation of T Cell Activation. *Front Immunol* (2016) 7:186. doi: 10.3389/fimmu.2016.00186
208. Gawden-Bone CM, Frazer GL, Richard AC, Ma CY, Strega K, Griffiths GM. PIP5 Kinases Regulate Membrane Phosphoinositide and Actin Composition for Targeted Granule Secretion by Cytotoxic Lymphocytes. *Immunity* (2018) 49(3):427–37.e4. doi: 10.1016/j.immuni.2018.08.017

209. Sanchez E, Liu X, Huse M. Actin clearance promotes polarized dynein accumulation at the immunological synapse. *PLoS One* (2019) 14(7):e0210377. doi: 10.1371/journal.pone.0210377
210. Ritter AT, Asano Y, Stinchcombe JC, Dieckmann NM, Chen BC, Gawden-Bone C, et al. Actin depletion initiates events leading to granule secretion at the immunological synapse. *Immunity* (2015) 42(5):864–76. doi: 10.1016/j.immuni.2015.04.013
211. Stinchcombe JC, Majorovits E, Bossi G, Fuller S, Griffiths GM. Centrosome polarization delivers secretory granules to the immunological synapse. *Nature* (2006) 443(7110):462–5. doi: 10.1038/nature05071
212. Liu X, Kapoor TM, Chen JK, Huse M. Diacylglycerol promotes centrosome polarization in T cells via reciprocal localization of dynein and myosin II. *Proc Natl Acad Sci U S A* (2013) 110(29):11976–81. doi: 10.1073/pnas.1306180110
213. Sanborn KB, Rak GD, Maru SY, Demers K, Difeo A, Martignetti JA, et al. Myosin IIA associates with NK cell lytic granules to enable their interaction with F-actin and function at the immunological synapse. *J Immunol* (2009) 182(11):6969–84. doi: 10.4049/jimmunol.0804337
214. Carisey AF, Mace EM, Saeed MB, Davis DM, Orange JS. Nanoscale Dynamism of Actin Enables Secretory Function in Cytolytic Cells. *Curr Biol* (2018) 28(4):489–502.e9. doi: 10.1016/j.cub.2017.12.044
215. Tamzalit F, Wang MS, Jin W, Tello-Lafoz M, Boyko V, Heddeleston JM, et al. Interfacial actin protrusions mechanically enhance killing by cytotoxic T cells. *Sci Immunol* (2019) 4(33):eaav5445. doi: 10.1126/sciimmunol.aav5445
216. Al-Samkari H, Berliner N. Hemophagocytic Lymphohistiocytosis. *Annu Rev Pathol* (2018) 13:27–49. doi: 10.1146/annurev-pathol-020117-043625
217. Chiang SC, Theorell J, Entesarian M, Meeths M, Mastafa M, Al-Herz W, et al. Comparison of primary human cytotoxic T-cell and natural killer cell responses reveal similar molecular requirements for lytic granule exocytosis but differences in cytokine production. *Blood* (2013) 121(8):1345–56. doi: 10.1182/blood-2012-07-442558
218. Brennan AJ, Chia J, Trapani JA, Voskoboinik I. Perforin deficiency and susceptibility to cancer. *Cell Death Differ* (2010) 17(4):607–15. doi: 10.1038/cdd.2009.212
219. Chiang SCC, Bleesing JJ, Marsh RA. Current Flow Cytometric Assays for the Screening and Diagnosis of Primary HLH. *Front Immunol* (2019) 10:1740. doi: 10.3389/fimmu.2019.01740
220. Bryceson YT, Pende D, Maul-Pavicic A, Gilmour KC, Ufheil H, Vraetz T, et al. A prospective evaluation of degranulation assays in the rapid diagnosis of familial hemophagocytic syndromes. *Blood* (2012) 119(12):2754–63. doi: 10.1182/blood-2011-08-374199
221. Marcenaro S, Gallo F, Martini S, Santoro A, Griffiths GM, Arico M. Analysis of natural killer-cell function in familial hemophagocytic lymphohistiocytosis (FHL): defective CD107a surface expression heralds Munc13-4 defect and discriminates between genetic subtypes of the disease. *Blood* (2006) 108(7):2316–23. doi: 10.1182/blood-2006-04-015693
222. Feldmann J, Callebaut I, Raposo G, Certain S, Bacq D, Dumont C. Munc13-4 is essential for cytolytic granules fusion and is mutated in a form of familial hemophagocytic lymphohistiocytosis (FHL3). *Cell* (2003) 115(4):461–73. doi: 10.1016/S0092-8674(03)00855-9
223. Bin NR, Ma K, Tien CW, Wang S, Zhu D, Park S, et al. C2 Domains of Munc13-4 Are Crucial for Ca(2+)-Dependent Degranulation and Cytotoxicity in NK Cells. *J Immunol* (2018) 201(2):700–13. doi: 10.4049/jimmunol.1800426
224. Maul-Pavicic A, Chiang SC, Rensing-Ehl A, Jessen B, Fauriat C, Wood SM, et al. ORAI1-mediated calcium influx is required for human cytotoxic lymphocyte degranulation and target cell lysis. *Proc Natl Acad Sci U S A* (2011) 108(8):3324–9. doi: 10.1073/pnas.1013285108
225. Dudenhoffer-Pfeifer M, Schirra C, Pattu V, Halimani M, Maier-Peuschel M, Marshall M. R, et al. Different Munc13 isoforms function as priming factors in lytic granule release from murine cytotoxic T lymphocytes. *Traffic* (2013) 14(7):798–809. doi: 10.1111/tra.12074
226. Capuano C, Paolini R, Molfetta R, Frati L, Santoni A, Galandrini R. PIP2-dependent regulation of Munc13-4 endocytic recycling: impact on the cytolytic secretory pathway. *Blood* (2012) 119(10):2252–62. doi: 10.1182/blood-2010-12-324160
227. Dettmer V, Bloom K, Gross M, Weissert K, Aichele P, Ehl S, et al. Retroviral UNC13D Gene Transfer Restores Cytotoxic Activity of T Cells Derived from Familial Hemophagocytic Lymphohistiocytosis Type 3 Patients In Vitro. *Hum Gene Ther* (2019) 30(8):975–84. doi: 10.1089/hum.2019.025
228. D'Orlando O, Zhao F, Kasper B, Orinska Z, Muller J, Hermans-Borgmeyer I, et al. Syntaxin 11 is required for NK and CD8(+) T-cell cytotoxicity and neutrophil degranulation. *Eur J Immunol* (2013) 43(1):194–208. doi: 10.1002/eji.201142343
229. Marsh RA, Satake N, Biroschak J, Jacobs T, Johnson J, Jordan M. B, et al. STX11 mutations and clinical phenotypes of familial hemophagocytic lymphohistiocytosis in North America. *Pediatr Blood Cancer* (2010) 55(1):134–40. doi: 10.1002/pbc.22499
230. Hellewell AL, Foresti O, Gover N, Porter MY, Hewitt EW. Analysis of familial hemophagocytic lymphohistiocytosis type 4 (FHL-4) mutant proteins reveals that S-acylation is required for the function of syntaxin 11 in natural killer cells. *PLoS One* (2014) 9(6):e98900. doi: 10.1371/journal.pone.0098900
231. Dabrazhynetskaya A, Ma J, Guerreiro-Cacais AO, Arany Z, Rudd E, Henter JII, et al. Syntaxin 11 marks a distinct intracellular compartment recruited to the immunological synapse of NK cells to colocalize with cytotoxic granules. *J Cell Mol Med* (2012) 16(1):129–41. doi: 10.1111/j.1582-4934.2011.01280.x
232. Halimani M, Pattu V, Marshall MR, Chang HF, Matti U, Jung M, et al. Syntaxin11 serves as a t-SNARE for the fusion of lytic granules in human cytotoxic T lymphocytes. *Eur J Immunol* (2014) 44(2):573–84. doi: 10.1002/eji.201344011
233. Spessott WA, Sanmillan ML, Kulkarni VV, McCormick ME, Giraudo CG. Syntaxin 4 mediates endosome recycling for lytic granule exocytosis in cytotoxic T-lymphocytes. *Traffic* (2017) 18(7):442–52. doi: 10.1111/tra.12490
234. Marshall MR, Pattu V, Halimani M, Maier-Peuschel M, Muller ML, Becherer U, et al. VAMP8-dependent fusion of recycling endosomes with the plasma membrane facilitates T lymphocyte cytotoxicity. *J Cell Biol* (2015) 210(1):135–51. doi: 10.1083/jcb.201411093
235. Chitrala P, Ravichandran K, Galgano D, Sleiman M, Krause E, Bryceson YT, et al. Cytotoxic Granule Exocytosis From Human Cytotoxic T Lymphocytes Is Mediated by VAMP7. *Front Immunol* (2019) 10:1855. doi: 10.3389/fimmu.2019.01855
236. Larghi P, Williamson DJ, Carpiere JM, Dogniaux S, Chemin K, Bohineust A, et al. VAMP7 controls T cell activation by regulating the recruitment and phosphorylation of vesicular Lat at TCR-activation sites. *Nat Immunol* (2013) 14(7):723–31. doi: 10.1038/ni.2609
237. Ou-Yang CW, Zhu M, Fuller DM, Sullivan SA, Chuck MII, Ogden S, et al. Role of LAT in the granule-mediated cytotoxicity of CD8 T cells. *Mol Cell Biol* (2012) 32(14):2674–84. doi: 10.1128/MCB.00356-12
238. Bryceson YT, Rudd E, Zheng C, Edner J, Ma D, Wood SM, et al. Defective cytotoxic lymphocyte degranulation in syntaxin-11 deficient familial hemophagocytic lymphohistiocytosis 4 (FHL4) patients. *Blood* (2007) 110(6):1906–15. doi: 10.1182/blood-2007-02-074468
239. Cote M, Menager MM, Burgess A, Mahloui N, Picard C, Schaffner C, et al. Munc18-2 deficiency causes familial hemophagocytic lymphohistiocytosis type 5 and impairs cytotoxic granule exocytosis in patient NK cells. *J Clin Invest* (2009) 119(12):3765–73. doi: 10.1172/JCI40732
240. zur Stadt U, Rohr J, Seifert W, Koch F, Grieve S, Pagel J, et al. Familial hemophagocytic lymphohistiocytosis type 5 (FHL-5) is caused by mutations in Munc18-2 and impaired binding to syntaxin 11. *Am J Hum Genet* (2009) 85(4):482–92. doi: 10.1016/j.ajhg.2009.09.005
241. Muller ML, Chiang SC, Meeths M, Tesi B, Entesarian M, Nilsson D, et al. An N-Terminal Missense Mutation in STX11 Causative of FHL4 Abrogates Syntaxin-11 Binding to Munc18-2. *Front Immunol* (2014) 4:515. doi: 10.3389/fimmu.2013.00515
242. Dieckmann NM, Hackmann Y, Arico M, Griffiths GM. Munc18-2 is required for Syntaxin 11 Localization on the Plasma Membrane in Cytotoxic T-Lymphocytes. *Traffic* (2015) 16(12):1330–41. doi: 10.1111/tra.12337
243. Spessott WA, Sanmillan ML, McCormick ME, Patel N, Villanueva J, Zhang K, et al. Hemophagocytic lymphohistiocytosis caused by dominant-negative mutations in STXBP2 that inhibit SNARE-mediated membrane fusion. *Blood* (2015) 125(10):1566–77. doi: 10.1182/blood-2014-11-610816
244. Meeths M, Entesarian M, Al-Herz W, Chiang SC, Wood SM, Al-Atteqi W, et al. Spectrum of clinical presentations in familial hemophagocytic

- lymphohistiocytosis type 5 patients with mutations in STXBP2. *Blood* (2010) 116(15):2635–43. doi: 10.1182/blood-2010-05-282541
245. Lopez JA, Noori T, Minson A, Li Jovanoska L, Thia K, Hildebrand MS, et al. Bi-Allelic Mutations in STXBP2 Reveal a Complementary Role for STXBP1 in Cytotoxic Lymphocyte Killing. *Front Immunol* (2018) 9:529. doi: 10.3389/fimmu.2018.00529
246. Weitzman S. Approach to hemophagocytic syndromes. *Hematol Am Soc Hematol Educ Program* (2011) 2011:178–83. doi: 10.1182/asheducation-2011.1.178
247. Menasche G, Pastural E, Feldmann J, Certain S, Ersoy F, Dupuis S, et al. Mutations in RAB27A cause Griscelli syndrome associated with haemophagocytic syndrome. *Nat Genet* (2000) 25(2):173–6. doi: 10.1038/76024
248. Stinchcombe JC, Bossi G, Booth S, Griffiths GM. The immunological synapse of CTL contains a secretory domain and membrane bridges. *Immunity* (2001) 15(5):751–61. doi: 10.1016/S1074-7613(01)00234-5
249. Haddad EK, Wu X, Hammer JA, 3, Henkart PA. Defective granule exocytosis in Rab27a-deficient lymphocytes from Ashen mice. *J Cell Biol* (2001) 152(4):835–42. doi: 10.1083/jcb.152.4.835
250. Elstak ED, Neef M, Nehme NT, Voortman J, Cheung M, Goodarzifard M, et al. The munc13-4-rab27 complex is specifically required for tethering secretory lysosomes at the plasma membrane. *Blood* (2011) 118(6):1570–8. doi: 10.1182/blood-2011-02-339523
251. Menasche G, Menager MM, Lefebvre JM, Deutsch E, Athman R, Lambert N, et al. A newly identified isoform of Slp2a associates with Rab27a in cytotoxic T cells and participates to cytotoxic granule secretion. *Blood* (2008) 112(13):5052–62. doi: 10.1182/blood-2008-02-141069
252. Menasche G, Feldmann J, Houdusse A, Desaymard C, Fischer A, Goud B, et al. Biochemical and functional characterization of Rab27a mutations occurring in Griscelli syndrome patients. *Blood* (2003) 101(7):2736–42. doi: 10.1182/blood-2002-09-2789
253. Zhang M, Bracaglia C, Prencipe G, Bemrich-Stolz CJ, Beukelman T, Dimmitt RA, et al. A Heterozygous RAB27A Mutation Associated with Delayed Cytolytic Granule Polarization and Hemophagocytic Lymphohistiocytosis. *J Immunol* (2016) 196(6):2492–503. doi: 10.4049/jimmunol.1501284
254. Cetica V, Hackmann Y, Grieve S, Sieni E, Ciambotti B, Coniglio ML, et al. Patients with Griscelli syndrome and normal pigmentation identify RAB27A mutations that selectively disrupt MUNC13-4 binding. *J Allergy Clin Immunol* (2015) 135(5):1310–8.e1. doi: 10.1016/j.jaci.2014.08.039
255. Menager MM, Menasche G, Romao M, Knapnougel P, Ho CH, Garfa M, et al. Secretory cytotoxic granule maturation and exocytosis require the effector protein hMunc13-4. *Nat Immunol* (2007) 8(3):257–67. doi: 10.1038/ni1431
256. Kurowska M, Goudin N, Nehme NT, Court M, Garin J, Fischer A, et al. Terminal transport of lytic granules to the immune synapse is mediated by the kinesin-1/Slp3/Rab27a complex. *Blood* (2012) 119(17):3879–89. doi: 10.1182/blood-2011-09-382556
257. Wood SM, Bryceson YT. Lymphocyte cytotoxicity: tug-of-war on microtubules. *Blood* (2012) 119(17):3873–5. doi: 10.1182/blood-2012-02-410381
258. Kaplan J, De Domenico I, Ward DM. Chediak-Higashi syndrome. *Curr Opin Hematol* (2008) 15(1):22–9. doi: 10.1097/MOH.0b013e3282f2bccc
259. Sepulveda FE, Burgess A, Heiligenstein X, Goudin N, Menager MM, Romao M, et al. LYST controls the biogenesis of the endosomal compartment required for secretory lysosome function. *Traffic* (2015) 16(2):191–203. doi: 10.1111/tra.12244
260. Kaya Z, Ehl S, Albayrak M, Maul-Pavicic A, Schwarz K, Kocak U, et al. A novel single point mutation of the LYST gene in two siblings with different phenotypic features of Chediak Higashi syndrome. *Pediatr Blood Cancer* (2011) 56(7):1136–9. doi: 10.1002/pbc.22878
261. Nagai K, Ochi F, Terui K, Maeda M, Ohga S, Kanegane H, et al. Clinical characteristics and outcomes of chediak-Higashi syndrome: a nationwide survey of Japan. *Pediatr Blood Cancer* (2013) 60(10):1582–6. doi: 10.1002/pbc.24637
262. Gil-Krzewska A, Wood SM, Murakami Y, Nguyen V, Chiang SCC, Cullinane AR, et al. Chediak-Higashi syndrome: Lysosomal trafficking regulator domains regulate exocytosis of lytic granules but not cytokine secretion by natural killer cells. *J Allergy Clin Immunol* (2016) 137(4):1165–77. doi: 10.1016/j.jaci.2015.08.039
263. Rak GD, Mace EM, Banerjee PP, Svitkina T, Orange JS. Natural killer cell lytic granule secretion occurs through a pervasive actin network at the immune synapse. *PLoS Biol* (2011) 9(9):e1001151. doi: 10.1371/journal.pbio.1001151
264. Brown AC, Oddos S, Dobbie IM, Alakoskela JM, Parton RM, Eissmann P, et al. Remodelling of cortical actin where lytic granules dock at natural killer cell immune synapses revealed by super-resolution microscopy. *PLoS Biol* (2011) 9(9):e1001152. doi: 10.1371/journal.pbio.1001152
265. Gil-Krzewska A, Saeed MB, Oszmiana A, Fischer ER, Lagrue K, Gahl WA, et al. An actin cytoskeletal barrier inhibits lytic granule release from natural killer cells in patients with Chediak-Higashi syndrome. *J Allergy Clin Immunol* (2018) 142(3):914–27.e6. doi: 10.1016/j.jaci.2017.10.040
266. Chiang SCC, Wood SM, Tesi B, Akar HH, Al-Herz W, Ammann S, et al. Differences in Granule Morphology yet Equally Impaired Exocytosis among Cytotoxic T Cells and NK Cells from Chediak-Higashi Syndrome Patients. *Front Immunol* (2017) 8:426. doi: 10.3389/fimmu.2017.00426
267. Mace EM, Dongre P, Hsu HT, Sinha P, James AM, Mann SS, et al. Cell biological steps and checkpoints in accessing NK cell cytotoxicity. *Immunol Cell Biol* (2014) 92(3):245–55. doi: 10.1038/icb.2013.96
268. Enders A, Zieger B, Schwarz K, Yoshimi A, Speckmann C, Knoepfle EM, et al. Lethal hemophagocytic lymphohistiocytosis in Hermansky-Pudlak syndrome type II. *Blood* (2006) 108(1):81–7. doi: 10.1182/blood-2005-11-4413
269. Jessen B, Bode SF, Ammann S, Chakravorty S, Davies G, Diestelhorst J, et al. The risk of hemophagocytic lymphohistiocytosis in Hermansky-Pudlak syndrome type 2. *Blood* (2013) 121(15):2943–51. doi: 10.1182/blood-2012-10-463166
270. El-Chemaly S, Young LR. Hermansky-Pudlak Syndrome. *Clin Chest Med* (2016) 37(3):505–11. doi: 10.1016/j.ccm.2016.04.012
271. Huizing M, Scher CD, Strovel E, Fitzpatrick DL, Hartnell LM, Anikster Y, et al. Nonsense mutations in ADTB3A cause complete deficiency of the beta3A subunit of adaptor complex-3 and severe Hermansky-Pudlak syndrome type 2. *Pediatr Res* (2002) 51(2):150–8. doi: 10.1203/00006450-200202000-00006
272. Clark RH, Stinchcombe JC, Day A, Blott E, Booth S, Bossi G, et al. Adaptor protein 3-dependent microtubule-mediated movement of lytic granules to the immunological synapse. *Nat Immunol* (2003) 4(11):1111–20. doi: 10.1038/ni1000
273. Nishikawa T, Okamura K, Moriyama M, Watanabe K, Ibusuki A, Sameshima S, et al. Novel AP3B1 compound heterozygous mutations in a Japanese patient with Hermansky-Pudlak syndrome type 2. *J Dermatol* (2020) 47(2):185–9. doi: 10.1111/1346-8138.15177
274. Kurnik K, Bartsch I, Maul-Pavicic A, Ehl S, Sandrock-Lang K, Bidlingmaier C, et al. Novel mutation in Hermansky-Pudlak syndrome type 2 with mild immunological phenotype. *Platelets* (2013) 24(7):538–43. doi: 10.3109/09537104.2012.741275
275. Ammann S, Schulz A, Krageloh-Mann I, Dieckmann NM, Niethammer K, Fuchs S, et al. Mutations in AP3D1 associated with immunodeficiency and seizures define a new type of Hermansky-Pudlak syndrome. *Blood* (2016) 127(8):997–1006. doi: 10.1182/blood-2015-09-671636
276. Hauck F, Gennery AR, Seidel MG. Editorial: The Relationship Between Cancer Predisposition and Primary Immunodeficiency. *Front Immunol* (2019) 10:1781. doi: 10.3389/fimmu.2019.01781
277. Palrasu M, Zaika E, El-Rifai W, Garcia-Buitrago M, Piazuelo MB, Wilson KT, et al. Bacterial CagA protein compromises tumor suppressor mechanisms in gastric epithelial cells. *J Clin Invest* (2020) 130(5):2422–34. doi: 10.1172/JCI130015
278. Alfarouk KO, Bashir AHH, Aljarbou AN, Ramadan AM, Muddathir AK, Alhoufi STS, et al. The Possible Role of Helicobacter pylori in Gastric Cancer and Its Management. *Front Oncol* (2019) 9:75. doi: 10.3389/fonc.2019.00075
279. Diaz P, Valenzuela Valderrama M, Bravo J, Quest AFG. Helicobacter pylori and Gastric Cancer: Adaptive Cellular Mechanisms Involved in Disease Progression. *Front Microbiol* (2018) 9:5. doi: 10.3389/fmicb.2018.00005
280. Pulvirenti F, Pecoraro A, Cinetto F, Milito C, Valente M, Santangeli E, et al. Gastric Cancer Is the Leading Cause of Death in Italian Adult Patients With Common Variable Immunodeficiency. *Front Immunol* (2018) 9:2546. doi: 10.3389/fimmu.2018.02546
281. Keenan JI, Peterson R, Hampton MB. NADPH oxidase involvement in the pathology of Helicobacter pylori infection. *Free Radic Biol Med* (2005) 38(9):1188–96. doi: 10.1016/j.freeradbiomed.2004.12.025



282. Koo S, Kejarawal D, Al-Shehri T, Dhar A, Lilic D. Oesophageal candidiasis and squamous cell cancer in patients with gain-of-function STAT1 gene mutation. *U Eur Gastroenterol J* (2017) 5(5):625–31. doi: 10.1177/2050640616684404
283. Cohen JI, Meyts I. Editorial: EBV Infection and Human Primary Immune Deficiencies. *Front Immunol* (2020) 11:130. doi: 10.3389/fimmu.2020.00130
284. Adriani M, Jones KA, Uchiyama T, Kirby MR, Silvin C, Anderson SM, et al. Defective inhibition of B-cell proliferation by Wiskott-Aldrich syndrome protein-deficient regulatory T cells. *Blood* (2011) 117(24):6608–11. doi: 10.1182/blood-2010-12-322834
285. Niedergang F, Di Bartolo V, Alcover A. Comparative Anatomy of Phagocytic and Immunological Synapses. *Front Immunol* (2016) 7:18. doi: 10.3389/fimmu.2016.00018
286. Leverrier Y, Lorenzi R, Blundell MP, Brickell P, Kinnon C, Ridley AJ, et al. Cutting edge: the Wiskott-Aldrich syndrome protein is required for efficient phagocytosis of apoptotic cells. *J Immunol* (2001) 166(8):4831–4. doi: 10.4049/jimmunol.166.8.4831
287. Tsuboi S. Requirement for a complex of Wiskott-Aldrich syndrome protein (WASP) with WASP interacting protein in podosome formation in macrophages. *J Immunol* (2007) 178(5):2987–95. doi: 10.4049/jimmunol.178.5.2987
288. Lorenzi R, Brickell PM, Katz DR, Kinnon C, Thrasher AJ. Wiskott-Aldrich syndrome protein is necessary for efficient IgG-mediated phagocytosis. *Blood* (2000) 95(9):2943–6. doi: 10.1182/blood.V95.9.2943.009k17\_2943\_2946
289. Jaiswal S, Chao MP, Majeti R, Weissman IL. Macrophages as mediators of tumor immunosurveillance. *Trends Immunol* (2010) 31(6):212–9. doi: 10.1016/j.it.2010.04.001
290. van Kessel KP, Van Strijp JA, Van Kats-Renaud HJ, Miltenburg LA, Fluitt AC, Verhoef J. Uncoupling of oxidative and non-oxidative mechanisms in human granulocyte-mediated cytotoxicity: use of cytoplasts and cells from chronic granulomatous disease patient. *J Leukoc Biol* (1990) 48(4):359–66. doi: 10.1002/jlb.48.4.359
291. Matlung HL, Babes L, Zhao XW, Van Houdt M, Treffers LW, Van Rees DJ, et al. Neutrophils Kill Antibody-Opsonized Cancer Cells by Trophic Osmolysis. *Cell Rep* (2018) 23(13):3946–59.e6. doi: 10.1016/j.celrep.2018.05.082
292. June CH, Sadelain M. Chimeric Antigen Receptor Therapy. *N Engl J Med* (2018) 379(1):64–73. doi: 10.1056/NEJMra1706169
293. Davenport AJ, Cross RS, Watson KA, Liao Y, Shi W, Prince HM, et al. Chimeric antigen receptor T cells form nonclassical and potent immune synapses driving rapid cytotoxicity. *Proc Natl Acad Sci U S A* (2018) 115(9):E2068–76. doi: 10.1073/pnas.1716266115
294. Papanthasiou MM, Stamatis C, Lakelin M, Farid S, Titchener-Hooker N, Shah N, et al. Autologous CAR T-cell therapies supply chain: challenges and opportunities? *Cancer Gene Ther* (2020). doi: 10.1038/s41417-019-0157-z
295. Depil S, Duchateau P, Grupp SA, Mufti G, Poirot L. ‘Off-the-shelf’ allogeneic CAR T cells: development and challenges. *Nat Rev Drug Discov* (2020) 19(3):185–99. doi: 10.1038/s41573-019-0051-2
296. Li Y, Hermanson DL, Moriarity BS, Kaufman DS. Human iPSC-Derived Natural Killer Cells Engineered with Chimeric Antigen Receptors Enhance Anti-tumor Activity. *Cell Stem Cell* (2018) 23(2):181–92.e5. doi: 10.1016/j.stem.2018.06.002
297. Mitwasi N, Feldmann A, Arndt C, Koristka S, Berndt N, Jureczek J, et al. “UniCAR”-modified off-the-shelf NK-92 cells for targeting of GD2-expressing tumour cells. *Sci Rep* (2020) 10(1):2141. doi: 10.1038/s41598-020-59082-4
298. Ngwube A, Hanson IC, Orange J, Rider NL, Seeborg F, Shearer W, et al. Outcomes after Allogeneic Transplant in Patients with Wiskott-Aldrich Syndrome. *Biol Blood Marrow Transplant* (2018) 24(3):537–41. doi: 10.1016/j.bbmt.2017.11.019
299. Pillay BA, Avery DT, Smart JM, Cole T, Choo S, Chan D, et al. Hematopoietic stem cell transplant effectively rescues lymphocyte differentiation and function in DOCK8-deficient patients. *JCI Insight* (2019) 5(11):e127527. doi: 10.1172/jci.insight.127527
300. Moens L, Frans G, Bosch B, Bossuyt X, Verbinnen B, Poppe W, et al. Successful hematopoietic stem cell transplantation for myelofibrosis in an adult with warts-hypogammaglobulinemia-immunodeficiency-myelokathexis syndrome. *J Allergy Clin Immunol* (2016) 138(5):1485–9.e2. doi: 10.1016/j.jaci.2016.04.057
301. Shamriz O, Vilk SR, Wolf DG, Ta-Shma A, Averbuch D, Weintraub M, et al. Hematopoietic stem cell transplantation conditioning with use of rituximab in EBV related lymphoproliferative disorders. *Clin Immunol* (2014) 151(2):79–83. doi: 10.1016/j.clim.2014.01.007
302. Nademi Z, Slatter MA, Dvorak CC, Neven B, Fischer A, Suarez F, et al. Hematopoietic stem cell transplant in patients with activated PI3K delta syndrome. *J Allergy Clin Immunol* (2017) 139(3):1046–9. doi: 10.1016/j.jaci.2016.09.040
303. Ouachee-Charadin M, Elie C, De Saint Basile G, Le Deist F, Mahlaoui N, Picard C, et al. Hematopoietic stem cell transplantation in hemophagocytic lymphohistiocytosis: a single-center report of 48 patients. *Pediatrics* (2006) 117(4):e743–50. doi: 10.1542/peds.2005-1789
304. Kuskonmaz B, Ayvaz D, Gokce M, Ozgur TT, Okur FV, Cetin M, et al. Hematopoietic stem cell transplantation in children with Griscelli syndrome: A single-center experience. *Pediatr Transplant* (2017) 21(7). doi: 10.1111/ptr.13040
305. Eapen M, Delaat CA, Baker KS, Cairo MS, Cowan MJ, Kurtzberg J, et al. Hematopoietic cell transplantation for Chediak-Higashi syndrome. *Bone Marrow Transplant* (2007) 39(7):411–5. doi: 10.1038/sj.bmt.1705600
306. Shaw P, Shizuru J, Hoenig M, Veys P, Iewp E. Conditioning Perspectives for Primary Immunodeficiency Stem Cell Transplants. *Front Pediatr* (2019) 7:434. doi: 10.3389/fped.2019.00434
307. Sandler RD, Carter S, Kaur H, Francis S, Tattersall RS, Snowden JA. Haemophagocytic lymphohistiocytosis (HLH) following allogeneic haematopoietic stem cell transplantation (HSCT)-time to reappraise with modern diagnostic and treatment strategies? *Bone Marrow Transplant* (2020) 55(2):307–16. doi: 10.1038/s41409-019-0637-7
308. Hierlmeier S, Eyrich M, Wolff M, Schlegel PG, Wiegering V. Early and late complications following hematopoietic stem cell transplantation in pediatric patients - A retrospective analysis over 11 years. *PLoS One* (2018) 13(10):e0204914. doi: 10.1371/journal.pone.0204914
309. Castagnoli R, Delmonte OM, Calzoni E, Notarangelo LD. Hematopoietic Stem Cell Transplantation in Primary Immunodeficiency Diseases: Current Status and Future Perspectives. *Front Pediatr* (2019) 7:295. doi: 10.3389/fped.2019.00295
310. Saultier P, Szepietowski S, Canault M, Falaise C, Poggi M, Suchon P, et al. Long-term management of leukocyte adhesion deficiency type III without hematopoietic stem cell transplantation. *Haematologica* (2018) 103(6):e264–7. doi: 10.3324/haematol.2017.186304
311. Shabrish S, Kelkar M, Chavan N, Desai M, Bargir U, Gupta M, et al. Natural Killer Cell Degranulation Defect: A Cause for Impaired NK-Cell Cytotoxicity and Hyperinflammation in Fanconi Anemia Patients. *Front Immunol* (2019) 10:490. doi: 10.3389/fimmu.2019.00490
312. Vely F, Barlogis V, Marinier E, Coste ME, Dubern B, Dugelay E, et al. Combined Immunodeficiency in Patients With Trichohepatoenteric Syndrome. *Front Immunol* (2018) 9:1036. doi: 10.3389/fimmu.2018.01036
313. Tabellini G, Baronio M, Patrizi O, Benevenuto A, Gazzurelli L, Plebani A, et al. The RAC2-PI3K axis regulates human NK cell maturation and function. *Clin Immunol* (2019) 208:108257. doi: 10.1016/j.clim.2019.108257

**Conflict of Interest:** The authors declare that the research was conducted in the absence of any commercial or financial relationships that could be construed as a potential conflict of interest.

Copyright © 2020 Mastio, Saeed, Wurzer, Krecke, Westerberg and Thomas. This is an open-access article distributed under the terms of the Creative Commons Attribution License (CC BY). The use, distribution or reproduction in other forums is permitted, provided the original author(s) and the copyright owner(s) are credited and that the original publication in this journal is cited, in accordance with accepted academic practice. No use, distribution or reproduction is permitted which does not comply with these terms.