



# Structural Aspects of the Allergen-Antibody Interaction

Anna Pomés<sup>1\*</sup>, Geoffrey A. Mueller<sup>2</sup> and Maksymilian Chruszcz<sup>3</sup>

<sup>1</sup> Indoor Biotechnologies, Inc., Charlottesville, VA, United States, <sup>2</sup> National Institute of Environmental Health Sciences, Durham, NC, United States, <sup>3</sup> Department of Chemistry and Biochemistry, University of South Carolina, Columbia, SC, United States

## OPEN ACCESS

### Edited by:

Christiane Hilger,  
Luxembourg Institute of  
Health, Luxembourg

### Reviewed by:

Klaus R. Liedl,  
University of Innsbruck, Austria  
Edzard Spillner,  
Aarhus University, Denmark

### \*Correspondence:

Anna Pomés  
apomes@inbio.com

### Specialty section:

This article was submitted to  
Immunological Tolerance and  
Regulation,  
a section of the journal  
Frontiers in Immunology

**Received:** 21 May 2020

**Accepted:** 29 July 2020

**Published:** 02 September 2020

### Citation:

Pomés A, Mueller GA and Chruszcz M  
(2020) Structural Aspects of the  
Allergen-Antibody Interaction.  
*Front. Immunol.* 11:2067.  
doi: 10.3389/fimmu.2020.02067

The development of allergic disease involves the production of IgE antibodies upon allergen exposure in a process called sensitization. IgE binds to receptors on the surface of mast cells and basophils, and subsequent allergen exposure leads to cross-linking of IgE antibodies and release of cell mediators that cause allergy symptoms. Although this process is quite well-understood, very little is known about the epitopes on the allergen recognized by IgE, despite the importance of the allergen-antibody interaction for the allergic response to occur. This review discusses efforts to analyze allergen-antibody interactions, from the original epitope mapping studies using linear peptides or recombinant allergen fragments, to more sophisticated technologies, such as X-ray crystallography and nuclear magnetic resonance. These state-of-the-art approaches, combined with site-directed mutagenesis, have led to the identification of conformational IgE epitopes. The first structures of an allergen (egg lysozyme) in complex with Fab fragments from IgG antibodies were determined in the 1980s. Since then, IgG has been used as surrogate for IgE, due to the difficulty of obtaining monoclonal IgE antibodies. Technical developments including phage display libraries have contributed to progress in epitope mapping thanks to the isolation of IgE antibody constructs from combinatorial libraries made from peripheral blood mononuclear cells of allergic donors. Most recently, single B cell antibody sequencing and human hybridomas are new breakthrough technologies for finally obtaining human IgE monoclonal antibodies, ideal for epitope mapping. The information on antigenic determinants will facilitate the design of hypoallergens for immunotherapy and the investigation of the fundamental mechanisms of the IgE response.

**Keywords:** allergy, allergen, IgE antibody, structure, X-ray crystallography, nuclear magnetic resonance, cryo-electron microscopy, mass spectrometry

## INTRODUCTION

The interaction between allergens and IgE antibodies is at the core of the allergic response. Epitopes could potentially be located on any part of the allergen surface. However, evidence shows that antibodies are very specific about the epitopes that they recognize and certain areas on the allergen seem to be preferential for antibody binding. The identification of epitopes recognized by IgE is valuable for the design of hypoallergens or other therapeutics. However, allergen-epitope

information has been difficult to obtain. This review will discuss various methods to probe epitopes and the knowledge that has been gained from available studies on allergens.

## HISTORICAL PERSPECTIVE TO IgE EPI TOPE MAPPING

Since the 1980s, efforts to identify antigenic determinants on allergens have been pursued, but progress in the area has been slow due to technical limitations. Original epitope mapping studies were based on the synthesis of overlapping peptides covering the full sequence of the allergen, and the selection of the peptides that bound IgE (1, 2). This approach led to the identification of linear epitopes that comprise a sequential or continuous set of amino acids. However, allergens are proteins or glycoproteins with a defined three-dimensional structure that determines the molecular surface and epitopes recognized by antibodies. Therefore, most allergenic epitopes are conformational, involving amino acids that are close in space due to the protein folding, but non-contiguous in the allergen sequence (3). Technologies that consider the three-dimensional structure of the allergens were necessary to analyze conformational epitopes.

In the absence of complete structural information, most of the original approaches to epitope mapping were indirect, based on the reduction of IgE antibody binding to modified allergen molecules in dot blots or enzyme-linked immunosorbent assays (ELISA) (4). They were possible thanks to peptide synthesis or to the development of recombinant technology, with *in vitro* expression of either allergen fragments, mutants, or allergen chimeras, and their subsequent testing for IgE antibody binding. The development of microarrays or bead-based epitope assays facilitated the investigation of the relevance of linear epitopes, using large sets of linear peptides (5, 6). Microarrays have been especially useful for food allergens because they have mainly linear epitopes due to food processing and/or digestion (6–9). Several IgE/IgG4-binding peptide epitopes were suggested as biomarkers for predicting clinical reactivity and severity to certain foods (10, 11). Another approach uses information from the allergen structure, and hybrid or chimeric allergens are designed by combining the sequences of homologous allergens from different species (12–14). Patches on the allergen surface associated with binding of IgE (from sera of subjects allergic to one of the allergens in the chimera) indicate the presence of epitopes (most likely conformational) on those regions. Another approach to epitope mapping is the identification of mimotopes, which mimic the structure of an epitope (15). It is based on the use of phage display libraries for the selection of peptides that, in combination with a computational algorithm, allow the identification of patches on the allergen surface that mimic conformational epitopes (16, 17). A knowledge of the allergen structure is needed, but the mimotope resulting from the analysis is not necessarily the same as the real epitope. Each of these technologies has provided valuable information on epitope mapping.

X-ray crystallography and nuclear magnetic resonance have determined the three-dimensional structure of many allergens, which helps immensely in interpreting epitopes. Allergens have a wide variety of three-dimensional structures, despite belonging to a limited number of protein families (18–20). Only 1.3% of the total Pfam domains are present in allergens (<http://www.meduniwien.ac.at/allfam/>). Once the allergen molecular surface is defined, certain amino acids can be selected for site-directed mutagenesis to analyze allergen-antibody interactions (21). Experimental IgE binding and cross-reactivity data can be compared for homologous allergens in conjunction with the molecular structure to understand the approximate location of IgE-binding epitopes (22, 23). Ultimately, the structures of allergen-antibody complexes provide the most detailed information of the epitope-paratope interaction. These precise technologies, although more laborious, directly identify the residues involved in allergen-antibody interactions. This review primarily covers X-ray crystallography and NMR approaches to epitope mapping (Table 1). Additional technologies that also consider the three-dimensional structure of proteins for epitope mapping are cryo-electron microscopy (cryo-EM) and chemical protection assays combined with mass spectrometry (MS). These will also be briefly discussed.

## STATE-OF-THE-ART TECHNOLOGIES FOR EPI TOPE MAPPING

### X-Ray Crystallography

Over 88% of experimental models of macromolecules that are deposited in the Protein Data Bank (PDB) were determined using X-ray crystallography (Table 1). This technique is often used to generate experimental models of antigen-antibody complexes, and allows for a detailed description of epitopes, paratopes and their chemical interactions. Structural analysis by X-ray crystallography provides the most detailed description of interactions between allergens and antibodies, but is not always easy to perform (24, 25). This approach requires the generation of: (1) significant quantities (mg amounts) of pure and homogeneous protein preparations, specifically the allergen-antibody complex, and (2) a well-diffracting crystal to perform an X-ray diffraction experiment. An additional difficulty in studying epitopes is that highly flexible molecules, like antibodies, are typically recalcitrant to the process of crystallization. To our knowledge, there is not currently a single structure of an antigen in complex with an intact antibody. Fragments derived from monoclonal antibodies (Fab, Fab') or antibody constructs (single-chain variable fragment -scFv-, scFab, rFab) are used for crystallization because they have significantly reduced conformational flexibility in comparison with intact immunoglobulins. Success in obtaining well-diffracting crystals is not guaranteed, even when sufficient quantities of pure and homogeneous allergen-antibody complexes are available. As crystallization conditions cannot be predicted, hundreds or thousands of trials using different solvent conditions are tested, as well as modifications to the allergen and antibody (26). Once a well-diffracting crystal is obtained, the process of

**TABLE 1** | Comparison of four epitope mapping techniques that consider the three-dimensional structure of the allergen: X-ray crystallography, NMR, cryo-EM and mass spectrometry.

X-ray crystallography	Nuclear magnetic resonance
<ul style="list-style-type: none"> <li>• Crystalline state, however, the crystals contain ~30–70% of disordered solvent</li> <li>• Theoretically no structure size limit</li> <li>• Proteins purified from natural sources can be used</li> <li>• Expression with isotope is typically not required for proteins or DNA. Sometimes selenomethionine is incorporated instead of Met.</li> <li>• X-rays diffraction data are recorded, and the diffraction patterns are used to calculate initial electron density maps. The maps are used to trace a model of the macromolecule, that is later refined and validated</li> <li>• Highly flexible/disordered regions of proteins cannot be modeled and are absent in the final models</li> </ul>	<ul style="list-style-type: none"> <li>• Solution conditions (requires weeks of stability for data collection).</li> <li>• High resolution structures up to ~30 kDa.</li> <li>• Protein/DNA samples usually require <sup>13</sup>C and <sup>15</sup>N labeling (stable isotopes). Cost of expression is prohibitive except in prokaryotes.</li> <li>• Data is nuclear resonance frequencies of primarily <sup>1</sup>H, <sup>13</sup>C, and <sup>15</sup>N. Distances between <sup>1</sup>H atoms are used to build ensembles of possible structures.</li> <li>• Motion and disorder can be directly measured on many time scales.</li> </ul>
<b>Mass spectrometry</b>	<b>Cryo-electron microscopy</b>
<ul style="list-style-type: none"> <li>• Typically used in protection assays for epitope mapping.</li> <li>• High sensitivity/low sample requirements.</li> <li>• Atomic resolution identifies specific residues for protection from modification.</li> <li>• Residues that are convenient to modify in protection assays are not always useful for epitope mapping.</li> <li>• Chemistry of modification procedures can have off target effects.</li> </ul>	<ul style="list-style-type: none"> <li>• Can determine atomic resolution structures frozen from solution in vitreous ice.</li> <li>• Low sample requirements.</li> <li>• Resolution occasionally as good as X-ray crystallography.</li> <li>• Performs better on very large samples with high symmetry, typically 100's of kDa, so it is currently not easily or generally applicable to allergen epitope mapping.</li> </ul>

structure determination can be very fast, as currently available software allows to determine initial models very quickly after collection of diffraction data. Therefore, taking into account the many advances in molecular biology, instrumentation, and software development, it is not surprising that the number of experimental structures deposited to the PDB and determined by X-ray crystallography continuously increases. Currently, 145,000 models have been determined using this technique. However, very few are structures of allergen-antibody complexes (see section Structures of Allergen-Antibody Complexes by X-Ray Crystallography).

## Nuclear Magnetic Resonance (NMR)

NMR approaches to observe antibody complexes utilize molecules in solution as opposed to crystallization that attempts to coax molecules out of solution and into a crystal lattice. NMR detects the resonant frequencies of atoms in a magnetic field. These frequencies are primarily influenced by the type of atom (<sup>1</sup>H, <sup>13</sup>C, or <sup>15</sup>N) and secondarily by the chemical environment of particular atoms. These data provide a rich source of atomic structure when the resonant frequencies can be specifically attributed to individual atoms (Table 1).

The primary struggle with NMR is sensitivity, which is why large powerful magnets are required. An additional difficulty in observing macromolecules is that the signals become exponentially more difficult to observe as molecular weight increases. NMR methods can determine macromolecular structures but are typically limited to molecules of <20 kDa for high resolution structures. All of the atoms in small allergens (approximately <20 kDa) can be readily observed, while much larger complexes (such as IgE, 190 kDa, combined with two allergens) require specific labeling of certain chemical groups that provide high sensitivity. It is important to realize that, in contrast to crystallography that directly determines the structure

of the complex, the NMR data on epitopes requires a careful comparison of the atomic frequencies or intensities in the allergen before and after complexation. Therefore, the NMR results are potentially subject to interpretation in the context of previously known structures or epitope mapping data.

## Cryo-Electron Microscopy (Cryo-EM)

Another emerging methodology that may become applicable to epitope mapping is cryo-electron microscopy (Cryo-EM) (Table 1). Due to technical improvements in the detectors, and secondarily computational methods, cryo-EM has demonstrated the ability to determine macromolecular structures at resolutions occasionally as good as X-ray crystallography, but frequently reasonable for epitope mapping (27). In July 2020 there were 63 Cryo-EM structures with <2 Å reconstruction resolution out of more than 5,000 reported in the PDB. Some attractive advantages of Cryo-EM include that samples are flash frozen, so they don't require crystallization and much less sample is typically required, frequently less than a mg. However, in the sample, the molecules still need to be relatively homogeneous in purity and conformation so the inherent flexibility of antibodies may preclude high resolution analysis. Cryo-EM is the opposite of NMR, regarding its preference of larger molecules for higher resolution information, whereas NMR yields more detailed information on smaller molecules. Although smaller antibody constructs such as Fv or scFv are presently too small for structural analysis by Cryo-EM, this technique may improve to facilitate the use of smaller proteins (28, 29).

There have been several papers on epitopes mapped by Cryo-EM, which are worth noting. For example, Fab fragments from monoclonal antibodies were localized on the spike protein of SARS-CoV-2, and on Zika virus particles (30, 31). More intriguing was the characterization of multiple epitopes simultaneously using polyclonal Fab from sera in a study of

neutralizing antibodies of the HIV envelope trimer (32). The study was able to characterize several epitope sites from a small blood volume derived from an immunized animal. Notice that the antigens in all three cases were very large proteins or particles, which is favorable for Cryo-EM characterization but is not typical of allergens which are usually small proteins. However, in this rapidly developing field, studies like these may be feasible in the future for allergens.

## Protection Assays Combined With Mass Spectrometry (MS)

Alternative methods for epitope mapping that rely on mass spectrometry are described in this section (Table 1). They differ from the methods described above that are traditionally associated with structural biology and determination of experimental models of macromolecules. One of the MS approaches is called paratope or epitope “excision” (33). The excision procedure includes enzymatic proteolysis that allows for generation of peptides forming epitopes or paratopes, which later are identified using, for example, a combination of MALDI (matrix-assisted laser desorption/ionization) and ESI (electrospray ionization) mass spectrometry (33–35). This approach requires a small sample that does not need to be labeled. However, as most often the epitopes of interest are discontinuous/conformational in nature, excision is usually combined with chemical modification of the studied complexes. The most common method of the chemical modification involves hydrogen-deuterium exchange (HDX). During this modification the antigen-antibody complex is placed in heavy water and protein backbone amide hydrogen atoms ( $^1\text{H}$ ) can be exchanged for deuterium ( $^2\text{H}$ ). The rate of the  $^1\text{H}$ - $^2\text{H}$  exchange (HDX) depends on solvent accessibility and dynamics of a particular protein fragment. Generally, hydrogens that are buried within the protein core or shielded from the solvent, such as hydrogens buried in an antigen-antibody interface will have a low rate of  $^1\text{H}$ - $^2\text{H}$  exchange. After the incubation in heavy water the complex undergoes enzymatic cleavage and the resulting peptides are identified by the change in mass, using MS. It is expected that surface residues forming epitopes and paratopes will have a relatively low level of incorporated  $^2\text{H}$ . This information combined with the molecular models of the antigen and the antibody allows for mapping of the interacting molecular surfaces. Therefore, HDX-MS became a very successful technique that not only has found application in analysis of antigen-antibody complexes, but also in mapping of other protein-ligand interactions (36, 37). Moreover, HDX-MS can be used for studies of protein conformational dynamics, and was successfully used in characterization of the dynamic behavior of antibodies (38, 39).

$^1\text{H}$ - $^2\text{H}$  exchange is not the only chemical modification that can be applied in protection assays combined with mass spectrometry. For example, various surface exposed amino acids can be oxidized by  $\text{H}_2\text{O}_2$  or modified by photochemically induced reactions (40, 41). The modifications to the allergen before and after complexation with the antibody can be compared for epitope information.

## STRUCTURES OF ALLERGEN-ANTIBODY COMPLEXES BY X-RAY CRYSTALLOGRAPHY

The X-ray crystallographic structures of allergen-antibody complexes were first determined for egg lysozyme with fragments of murine IgG monoclonal antibodies (mAb) (42–47). Subsequently, other structures were reported for other allergens, where murine IgG mAb were selected as surrogates for human IgE, due to their capacity to inhibit binding of human IgE antibody to the allergen (Table 2) (48–53, 56, 58, 60–64). These studies involved the purification of an allergen either from the natural source or from *in vitro* cultures expressing recombinant allergens. The IgG mAb were cleaved using pepsin or papain, which resulted in  $\text{F}(\text{ab}')_2$ -that was reduced to  $\text{F}(\text{ab}')-$  or Fab, respectively. These antibody fragments contain the paratope and were purified and combined with the allergen to form a complex, which was purified for crystallography.

Although there are <20 different allergens that have their structures determined in complexes with antibodies (Table 2) their analysis provides interesting insights into epitopes and paratopes. Chicken lysozyme (Gal d 4) is often used as a test molecule and there is a vast amount of literature on the use of this protein to study interactions with antibodies. Therefore, to avoid bias that a large number of lysozyme-antibody complex may cause we selected for analyses only some representative structures. While allergens have a wide variety of structures, antibodies of the same isotype have the same structure, formed by immunoglobulin-fold domains of about 100 amino acids. Light chains have an N-terminal variable domain ( $V_L$ ) followed by a constant domain. Similarly, heavy chains have a variable N-terminal domain ( $V_H$ ), but it is followed by either 3 (in IgG) or 4 (in IgE) constant domains. The central part of these domains is made of anti-parallel  $\beta$ -sheets, in which  $\beta$ -strands are linked to form the so-called Greek-key motifs. For example, IgG  $V_H$  domain is made of anti-parallel  $\beta$ -sheets composed of nine  $\beta$ -strands that are linked by eight loops (Figure 1) (65). Of the four apical loops, only loops 1, 2, and 4 interact with the antigen, and contain the complementary determining regions (CDRs): CDR1, CDR2, and CDR3, respectively. The loops 1, 2, and 4 are between beta-sheets B-C, C'-C'', and F-G, respectively (Figure 1). A similar  $\beta$ -sheet configuration occurs in the light chain. The 6 loops involved in paratope formation form the following CDRs: H CDR1, H CDR2, H CDR3 in the heavy chain, and L CDR1, L CDR2, and L CDR3 in the light chain. The CDRs contain the amino acids that form the paratope. The H CDR3 is sufficient for most antibody specificities (66), although exceptions have been found (67). In a few cases, additional residues outside the CDR, located in the “framework” of the antibody, can also contribute to antibody binding. While epitopes can be located on different parts of the allergen surface, paratopes are always at the apical region of the variable domain of the antibody, formed by the 6 CDRs. The CDR boundaries have been historically defined in different ways (68–70), and currently the ImmunoGenetics website ([www.imgt.org](http://www.imgt.org)) utilizes a consensus for their estimation.

**TABLE 2** | Structures of allergen-antibody complexes by X-ray crystallography.

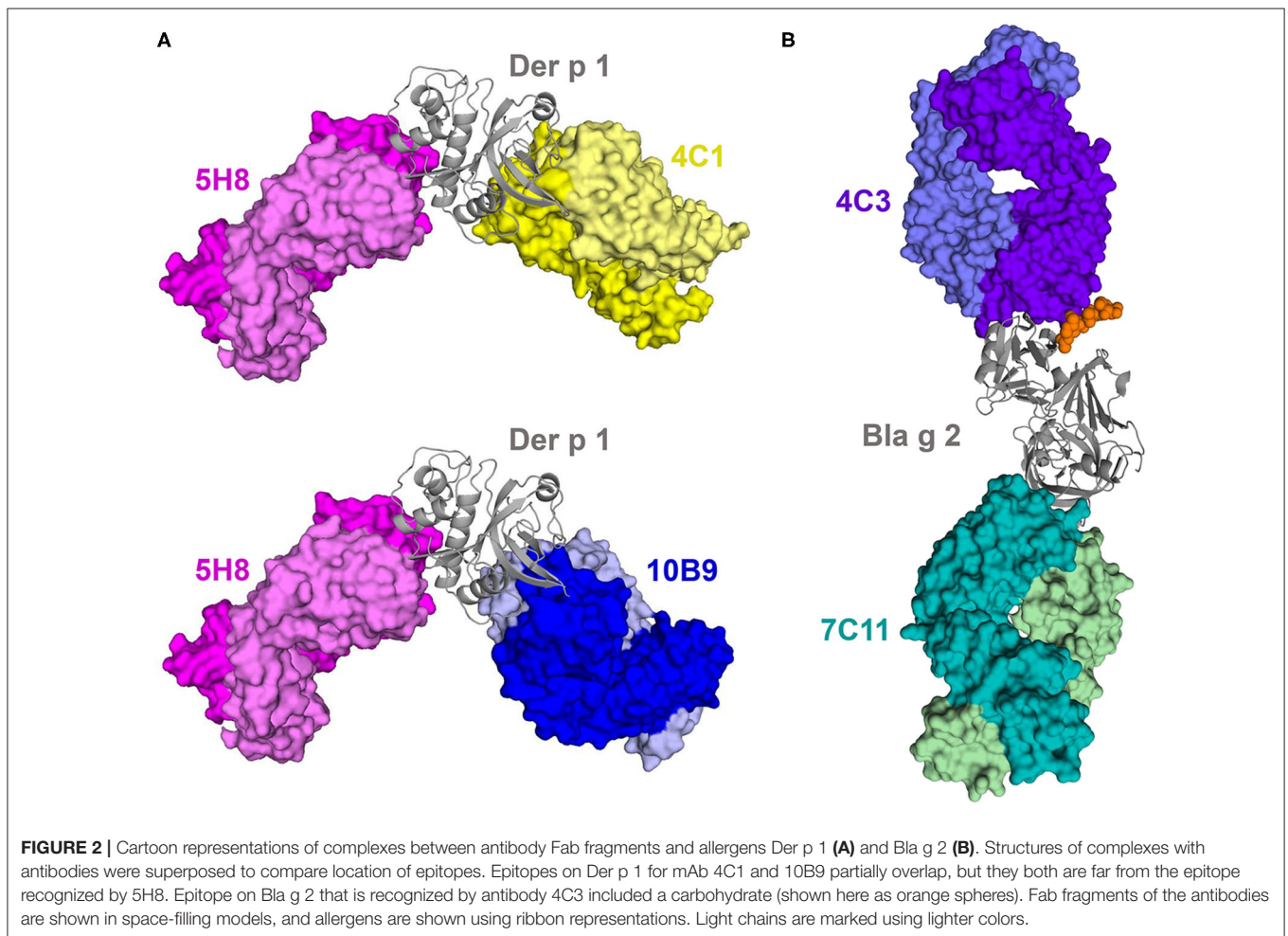
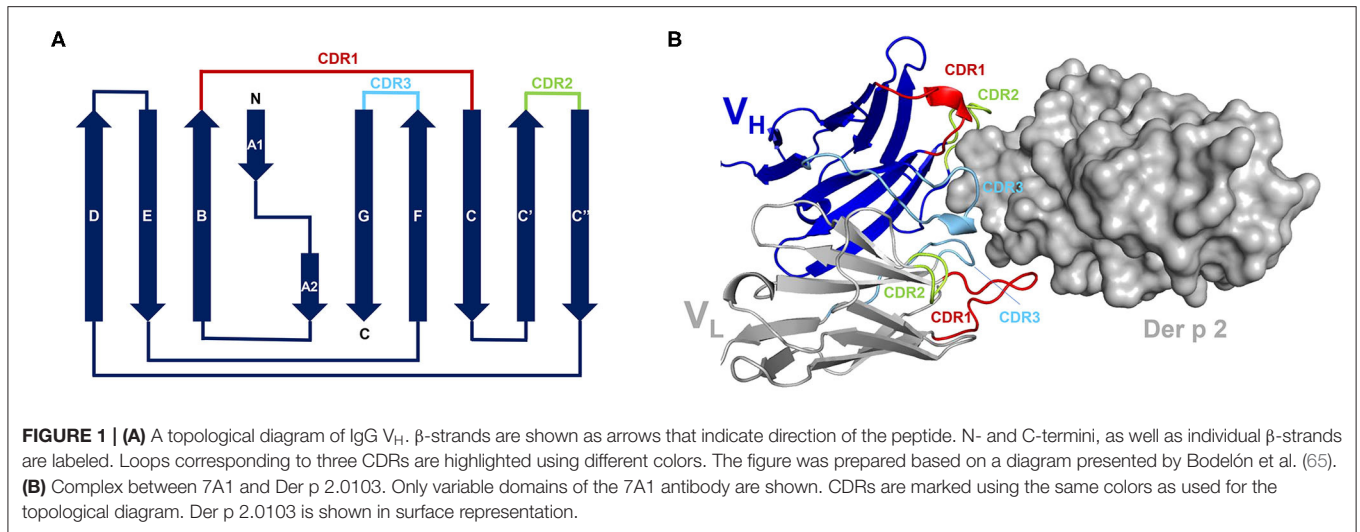
<b>Allergen in complex with IgG antibody construct</b>					
<b>Allergen</b>	<b>Allergen source</b>	<b>Allergen expression system</b>	<b>Antibody</b>	<b>Antibody expression system</b>	<b>PDB code</b>
Api m 2	Honeybee	Insect cells (high five)	Fab; mIgG1 mAb 21E11	<i>Mus musculus</i> hybridoma cells	2J88 (48)*
Bet v 1	Birch	<i>E. coli</i>	Fab'; mIgG1 mAb BV16	<i>Mus musculus</i> hybridoma cells	1FSK (49)*
Bla g 2	German cockroach	<i>P. pastoris</i>	Fab', mIgG1 mAb 7C11	<i>Mus musculus</i> hybridoma cells	2NR6 (50) (51)*
Bla g 2	German cockroach	<i>P. pastoris</i>	Fab, mIgG1 mAb 4C3	<i>Mus musculus</i> hybridoma cells	3LIZ (52)*
Der f 1	House dust mite	<i>D. farinae</i> mite culture	Fab; mIgG1 mAb 4C1	<i>Mus musculus</i> hybridoma cells	5VPL (53) (54)*
Der p 1	House dust mite	<i>D. pteronyssinus</i> mite culture	Fab; mIgG1 mAb 4C1	<i>Mus musculus</i> hybridoma cells	1) 3RVW (53) 2) 3RVX (53) (55)*
Der p 1	House dust mite	<i>D. pteronyssinus</i> mite culture	Fab; mIgG1 mAb 5H8	<i>Mus musculus</i> hybridoma cells	4PP1 (56) (57)*
Der p 1	House dust mite	<i>D. pteronyssinus</i> mite culture	Fab; mIgG1 mAb 10B9	<i>Mus musculus</i> hybridoma cells	4PP2 (56) (57)* (55)*
Der p 2	House dust mite	<i>P. pastoris</i>	Fab; mIgG1 mAb 7A1	<i>Mus musculus</i> hybridoma cells	6OY4 (58)* (59)*
Fel d 1	Cat	CHO	Fab; IgG4 mAb REGN1909	CHO <sup>c</sup>	5VYF (60)
Gal d 4 (lysozyme)	Chicken	Not specified (most likely <i>Gallus gallus</i> )		<i>E. coli</i> (1FDL) or <i>Mus musculus</i> hybridoma cells	(1) (42) (2) (43) (3) 3HFM (44) (4) 1FDL (45) (5) 1MLC (46) (6) 1YQV (47)
Gal d 4 (lysozyme)#	Chicken	Not specified	Human V <sub>H</sub> domain; VH H04 Phage displayed	<i>E. coli</i> BL21 Gold	(1) 4PGJ (61) (2) 4U3X (61)
Phl p 7	Timothy grass	<i>E. coli</i> BL21 star DE3	Fab; hlgG1 mAb 102.1F10 was expressed based on a hlgG4 that was generated from matched heavy- and light-chain sequences by single B cell cloning from allergic individuals	FreeStyle 293F	5OTJ (62)
<b>Allergen in complex with IgG antibody constructs containing human IgE variable regions</b>					
Bos d 5	Cow	<i>E. coli</i>	Fab; hlgG1 mAb D1: C <sub>κ</sub> and CH1 of IgG1 cloned with IgE V <sub>H</sub> /V <sub>L</sub> isolated from human IgE derived from a combinatorial library	<i>E. coli</i> RV308	2R56 (63)
Phl p 2	Timothy grass	<i>E. coli</i> BL21	Fab; hlgG1 mAb huMab2: C <sub>κ</sub> and CH1 of IgG1 cloned with IgE V <sub>H</sub> /V <sub>L</sub> isolated from human IgE derived from a combinatorial library	CHO-K1	2VXQ (64)*

\*Manuscripts that report inhibition of IgE antibody binding by the antibody used in the X-ray crystal structure (or viceversa).

#Only selected complexes with lysozyme are listed. For example, complexes of human V<sub>H</sub> domains with lysozyme were chosen to compare them with complexes formed by Fabs.

A significant fraction of the available allergen-antibody structures corresponds to complexes of Group 1—the best studied—and Group 2 house dust mite allergens, and the cockroach allergen Bla g 2 (Figure 2). Groups 1 and 2 comprise the most important major allergens from house dust mites. A major allergen is one to which >50% of subjects allergic to the allergen source are sensitized. Group 1 includes Der p 1, Der f 1, Blo t 1, and others, and are cysteine proteases. Group 2 includes Der p 2, Der f 2, Blo t 2, and others with an MD-2-related lipid-recognition (ML) domain (www.allergen.org). Three X-ray crystal structures of Der p 1 have been determined in complexes

with three different murine IgG mAb (4C1, 5H8, and 10B9), from which mAb 4C1 is a cross-reacting antibody that also binds to Der f 1 (53, 56). Comparison of Der f 1 and Der p 1 structures with 4C1 revealed that the cross-reactive mAb binds to a conserved surface patch that is present on both allergens (53). Unexpectedly, this patch is not a part of the largest conserved surface area in common for both Der f 1 and Der p 1, and which includes the active site of the enzymes. The majority of the amino acids forming the central part of the epitope are conserved, and in very similar conformations. Interestingly, the epitopes for 10B9 and 4C1 partially overlap, but 10B9 is



not able to bind to Der f 1. The epitope for 4C1 is “rotated counterclockwise” by  $\sim 90^\circ$  in relation to the position of the 10B9 epitope on Der p 1. On the other hand, the 5H8 binding

epitope is located at a significant distance from both 4C1 and 10B9 epitopes. The image of the structure of three Der p 1-antibody complexes clearly illustrates that mAb 5H8 and 4C1

or 10B9 can simultaneously bind to the same allergen molecule (**Figure 2**) (56). Bla g 2 has a bilobal structure typical of aspartic proteases, but it is enzymatically inactive due to substitutions in the catalytic site (71, 72). Two structures of Bla g 2 with mAb 7C11 and 4C3 have been determined, showing their binding to opposite lobes of the molecule (50, 52). The complex with mAb 4C3 was unique because it showed that carbohydrates contributed to the interactions with Bla g 2 (**Figure 2**). The murine IgG mAbs used in these crystallographic studies were chosen as surrogate IgE antibodies, because they inhibit binding of IgE to the allergen. Once the IgG epitope was identified, site-directed mutagenesis of the allergen residues involved in antibody recognition was performed, followed by IgE antibody binding analysis of the mutants, to identify IgE antibody binding sites. This approach resulted in the design and production of allergen mutants with decreased capacity to bind IgE, which are being investigated as future candidates for immunotherapy (51, 58, 67, 73).

The antibodies in the majority of allergen-antibody complexes that have their structures determined are IgG1. However, three of the structures reported in **Table 2** are different from the IgG1 isotype: 1) IgG4 (in complex with Fel d 1), 2) an IgG1 construct engineered to combine the constant domains of human IgG1 heavy and kappa light chains with variable regions of a human IgE construct derived from an scFv combinatorial library (in complex with Bos d 5), or 3) an Fab isolated from a combinatorial library, which is a hybrid of the variable domain of the IgE Fab and the constant domain of human IgG1 (in complex with Phl p 2) (60, 63, 64). The IgG4 (REGN1909) binding Fel d 1 is a fully humanized antibody that was derived from mice immunized with recombinant dimeric Fel d 1 (60). REGN1909 is able to partially block IgE binding to natural Fel d 1, with a maximum inhibition of 51%. REGN1909 together with another IgG4 (REGN1908), which binds to a different non-overlapping epitope, was able to block up to 83% of IgE binding to natural Fel d 1. A combination of X-ray crystallography and HDX-MS was used to elucidate information on the antibody binding epitopes for REGN1908 and REGN1909. Only the crystal structure of Fel d 1 in complex with REGN1908 was obtained (60).

While most often the antibodies that are used in studies of allergens are composed of light and heavy chains with six total CDRs, there are also examples of heavy chain only antibodies. These can contain two heavy chains only (and therefore have 3CDRs for recognition per chain) or single domain antibodies, which have a single antigen binding domain (74–76). Heavy chain only antibodies are present in nature and are produced by camelids and sharks. The paratopes formed by the single chain antibodies have a very similar amino acid composition to that observed in conventional antibodies (77, 78). The heavy chain only antibodies, and especially their  $V_H$  domains, are relatively easy to produce and their biophysical, as well as structural properties, allow for easy application in biotechnology and therapeutics (77, 79). Single domain antibodies (specific for lysozyme) were isolated years before discovery of heavy chain antibodies in camelids (76), and were proposed as alternative to conventional monoclonal antibodies. Later on, camelids'  $V_H$

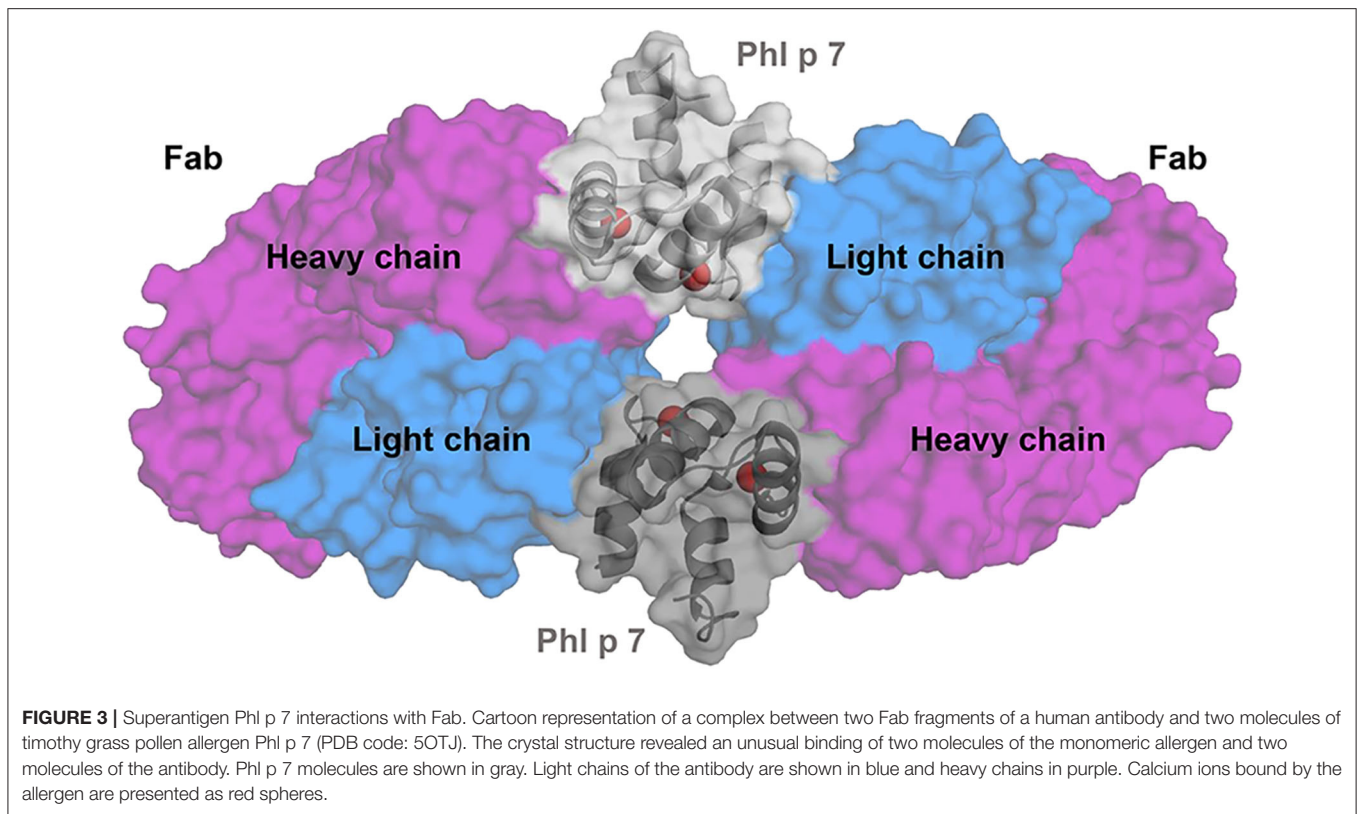
domains also became a model for the generation of their human equivalents. Fully human  $V_H$  single domains were used to generate complexes with Gal d 4 (**Table 2**) (61).

A new type of allergen-antibody interaction was recently reported thanks to the determination of a Phl p 7-antibody crystal structure (**Figure 3**) (62). An IgG4 originally generated from single B cell cloning was converted into an IgG1 for structure determination of the allergen-antibody complex. The structure revealed that two antibodies bind simultaneously to Phl p 7 in two different ways: (1) the classical mode that involves both heavy and light chains of the antibody, and (2) an unusual non-standard way, involving only binding of the light chain to the allergen to a separate Phl p 7. This resulted in trapping two monomeric allergen molecules between two molecules of the same antibody (62). While Phl p 7 was not a dimer, the stoichiometry of the complex still required two Phl p 7 molecules. Therefore, this Phl p 7-antibody structure has changed the prior view that one antibody is able to recognize only a single epitope on an allergen/antigen.

The allergens that we have described are proteins, and their interactions with antibodies are the same as for other proteinaceous antigens. It also has to be stressed that X-ray crystallography provides generally a static picture of the interacting molecules. However, both antigens and specifically antibodies display a great level of conformational flexibility (80, 81). It was shown that conformational flexibility and local structural dynamics of antibodies play a very important role in recognition and binding (82, 83). A higher level of conformational flexibility usually is attributed to antibodies that are not matured, and the flexibility allows them to recognize more antigens and/or altered antigens (84). During an antibody's maturation the increase of specificity is often achieved at the cost of the conformational flexibility, and a more rigid antibody binds better to one antigen (85, 86). Therefore, studies of the CDR conformations are critical for understanding the process of recognition and binding of antigens by antibodies (87–90), and these studies are most often performed using NMR, HDX-MS and various computational methods.

## LESSONS LEARNED ABOUT ALLERGEN-ANTIBODY INTERACTIONS USING X-RAY CRYSTALLOGRAPHY

An analysis of 16 allergen-antibody structures selected from **Table 2** revealed a detailed description of the interface formed by epitopes and paratopes (45–50, 52, 53, 56, 58, 60–64). Typically, the interface area falls in the 650–920 Å<sup>2</sup> range (an average of 813 Å<sup>2</sup>; **Figure 4A**) (91). In the complex with Phl p 7 mentioned above, the interface area is larger, and can be divided between a “classic” interface (~820 Å<sup>2</sup>) with one antibody, and an additional interface (~380 Å<sup>2</sup>) responsible for the non-standard interaction with the light chain from the second antibody (62). In most cases, the antibody heavy chain provides the largest contribution toward the total area of the interface, but this contribution is not always significantly bigger than the light chain share (**Figure 4A**). The light chain provides between 23 and



53% of the interface area. In the Api m 2 and Bla g 2 (2NR6) complexes, the light and heavy chains contribute almost equally to the interface area (48, 50). However, it is worthwhile to note that in two complexes of antibody V<sub>H</sub> domains with Gal d 4 (PDB codes: 4PGJ and 4U3X), the allergen-antibody interface areas are quite large (810 and 826 Å<sup>2</sup>, respectively), perhaps to compensate that the paratope is formed only by the heavy chain.

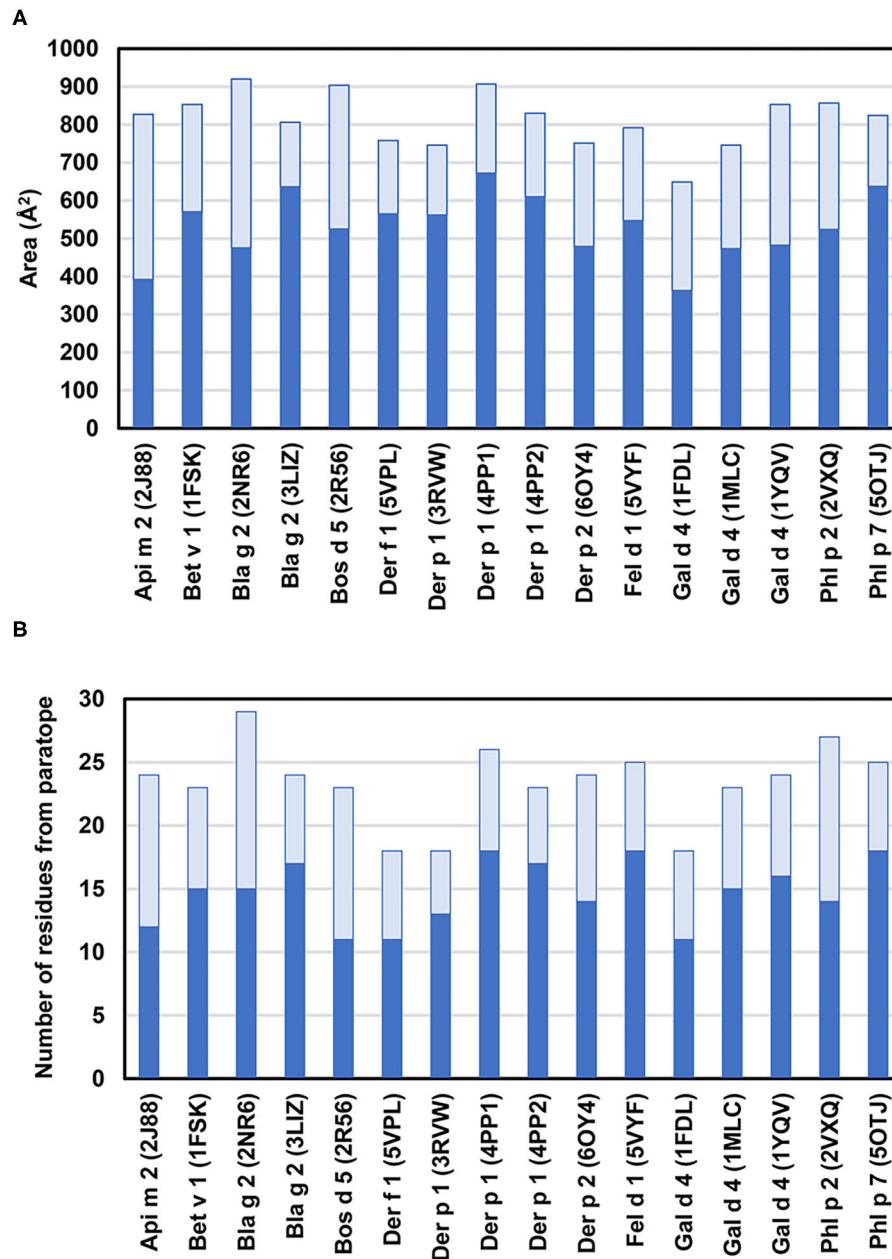
Analysis of the allergen-antibody interfaces at the amino acid level shows that paratopes are formed by 18–28 residues that interact with epitopes composed of a similar number of amino acids (12–25 in the set of 16 complexes analyzed here) (Figure 4B, Table 2) (45–50, 52, 53, 56, 58, 60–64). In addition, it is possible to examine the distribution of various amino acids in the epitope and paratope areas. While the amino acid composition of epitopes is barely different from the overall composition of the allergen surface residues (93), there is a significant bias in amino acid composition of paratopes (Figures 5–7). Namely, the paratopes have a very high content of tyrosine, serine, and glycine residues, with relatively low content of isoleucine, leucine, lysine, methionine, and proline (94–97). The paratopes also tend to have a relatively high content of aromatic residues (Tyr, Trp, Phe, and His). Unfortunately, the relatively small number of determined structures of allergen-antibody complexes does not allow for generalizations on the compositional bias of allergen epitopes, especially when among the 16 structures analyzed here, three contain Der p 1, three contain Gal d 4, and two contain Bla g 2. However, in

large datasets of protein-protein interactions, aromatic residues are also generally favored (98, 99). No obvious differences were observed between allergen-antibody interactions and the antibody recognition of other non-allergen proteins.

The chemical interactions that drive allergen-antibody formation include covalent (H-bonds) as well as non-covalent binding interactions (e.g., hydrophobic, van der Waals, charge-charge, and cation- $\pi$  interactions). Hydrophobic and electrostatic interactions are most important for a primary contact between antigens and antibodies (100). However, once the distance between antigen and antibody is shortened, van der Waals interactions and H-bonds start to play a significant role. H-bonds are especially important, as they quite often are associated with specificity of the binding. The analysis of 16 structures in Table 2 indicates that there are between 7 and 16 H-bonds that mediate contacts within the epitope-paratope interface (Figure 8). Heavy chains of the antibodies are responsible for the majority of the hydrogen bonds that are formed. While most often atoms that are hydrogen donors or acceptors in the H-bonds belong to the side chains of amino acids forming paratopes or epitopes, there are also hydrogen bonds formed by main chain atoms (Figure 8).

Amino acids with charged side chains also play an important role in mediation of epitope-paratope interactions (101). For example, salt bridges in the interfaces are formed between positively charged amino acids (Arg or Lys) and negatively charged side chains of Asp or Glu. Enrichment of epitopes in such



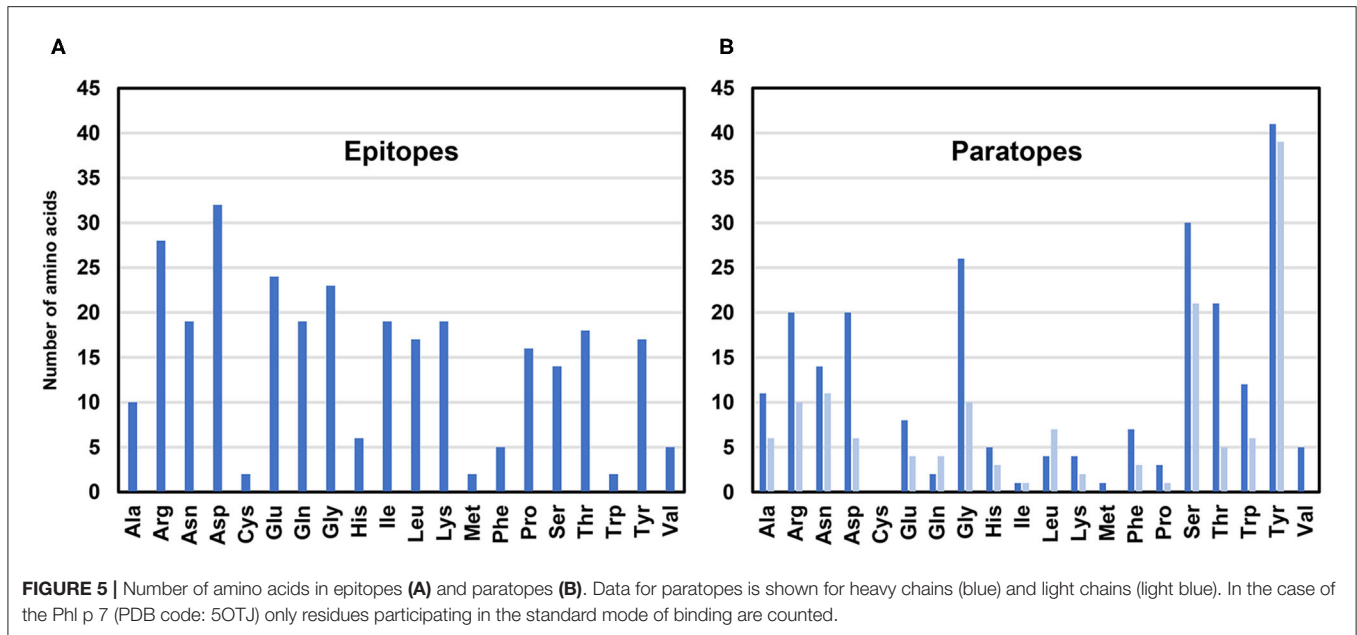


**FIGURE 4 | (A)** Allergen-antibody interface areas. Dark blue color corresponds to the area of the interface that corresponds to heavy chain and light blue color indicates the area of interaction with light chain. In the case of Phl p 7 (PDB code: 5OTJ) the only area corresponding to the standard mode of binding is reported. **(B)** Number of residues from heavy chain (blue) and light chain (light blue) that participate in interactions with allergens. Only residues that contribute at least  $2.0 \text{ \AA}^2$  to the interface area (as calculated with PDBEPIISA) (92) are counted.

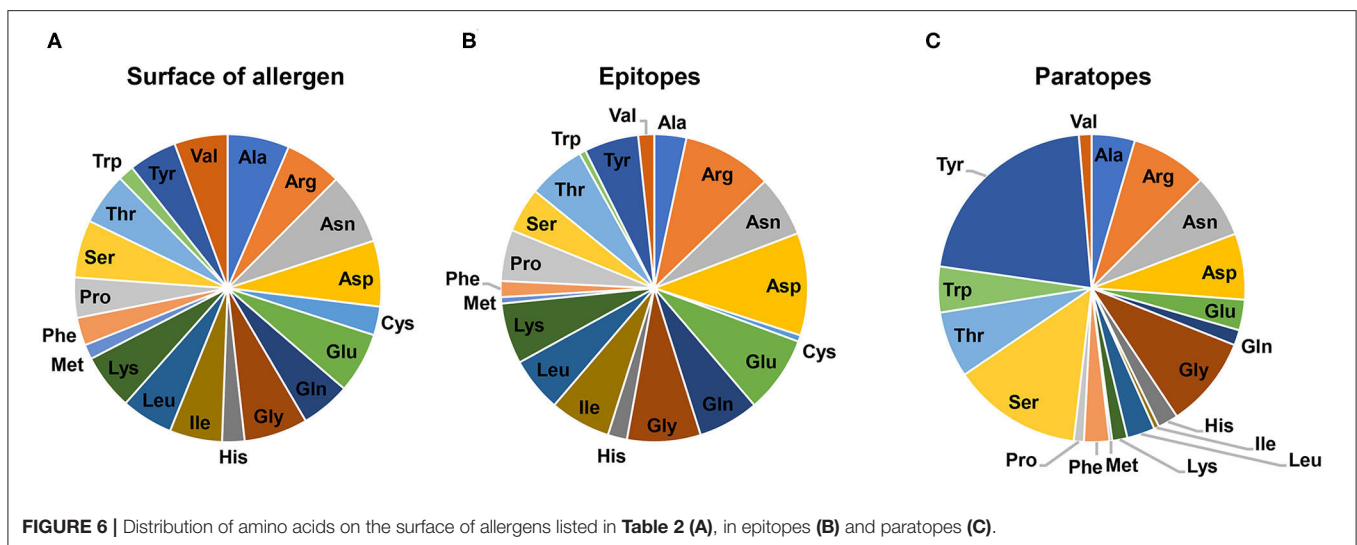
amino acids is illustrated in **Figures 5–7**. It has been shown that electrostatic interactions increase the binding specificity between antigens and antibodies (102, 103). In addition, positively charged side chains may participate in cation- $\pi$  interactions (50, 104, 105). This type of interaction is relatively common in antigen-antibody interfaces, as it is formed by aromatic residues (e.g., Phe, Tyr, Trp) and side chains of Arg or Lys, which are

over-represented in epitopes and paratopes. For example, cation- $\pi$  interactions were observed in interfaces formed between Bla g 2 and mAb 7C11, Der p 1 and 5H8, as well as between Der p 2 and mAb 7A1 (50, 56, 58). Side chains of aromatic residues may be also involved in various  $\pi$ - $\pi$  interactions (56, 105).

Besides protein-protein contacts at the allergen-antibody interface, other chemical moieties can form contacts between



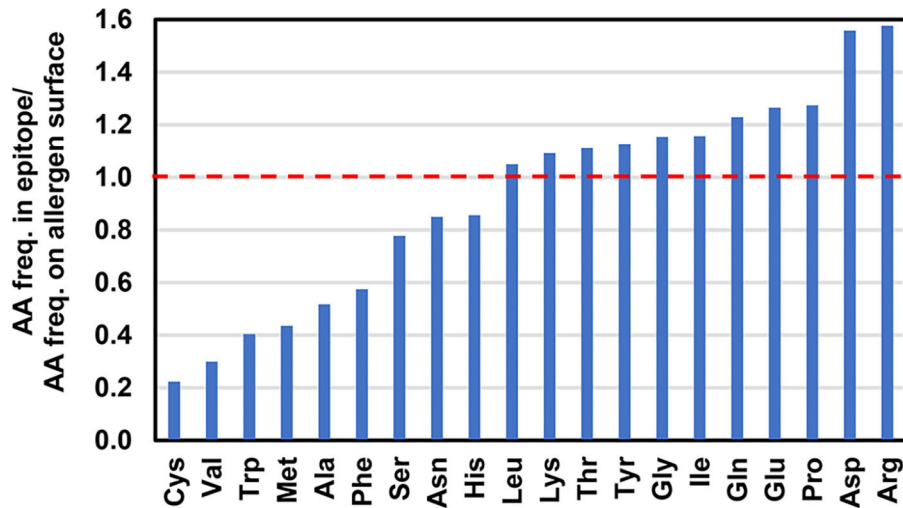
**FIGURE 5 |** Number of amino acids in epitopes (A) and paratopes (B). Data for paratopes is shown for heavy chains (blue) and light chains (light blue). In the case of the Phl p 7 (PDB code: 5OTJ) only residues participating in the standard mode of binding are counted.



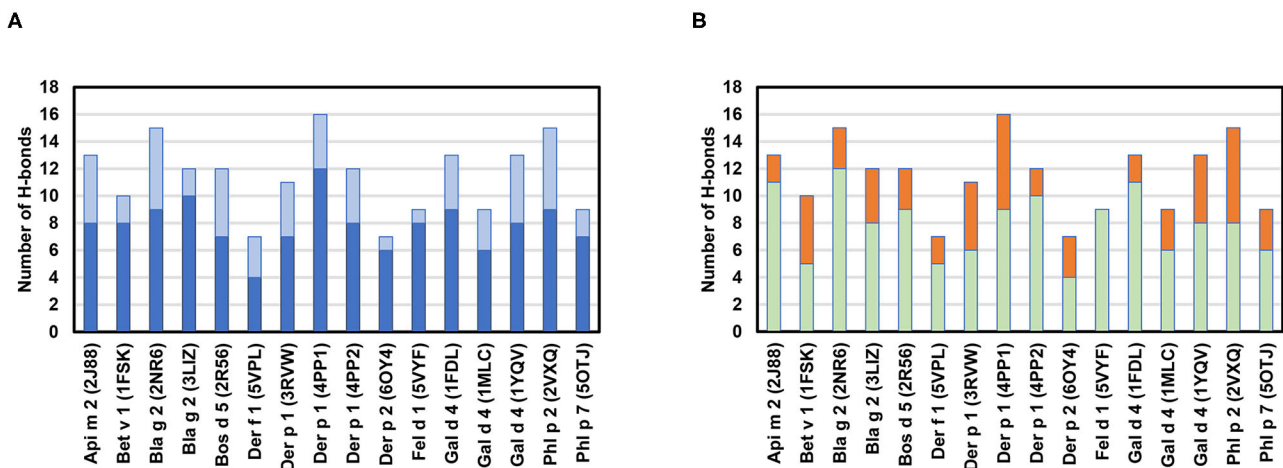
**FIGURE 6 |** Distribution of amino acids on the surface of allergens listed in Table 2 (A), in epitopes (B) and paratopes (C).

the two molecules. One of them is carbohydrates. An epitope on Bla g 2 that is recognized by mAb 4C3 includes a glycan (Figure 2) (52). The role of this glycan as part of the epitope has also been demonstrated in relation to IgE binding and basophil histamine release (106). This observation stresses the potential importance of post-translational modifications of the allergens for their interactions with antibodies (107, 108). Production of recombinant proteins in some systems, such as *E. coli*, which do not add carbohydrates to expressed proteins, may lead to a lack of proper recognition by antibodies from allergic individuals raised against the glycosylated natural allergen. Nevertheless, the allergen recognition might still occur, if the antibody recognizes the protein part of the epitope.

During the process of antigen-antibody recognition many water molecules that were on the surface of the interreacting molecules are displaced. However, this process does not always lead to their complete displacement. In fact, water molecules can play an important role in allergen-antibody interactions, in purely protein-protein complexes, and the aforementioned protein-carbohydrate complex (52). Very often, the water molecules are buried between the allergen and the antibody and mediate the contact between the macromolecules through hydrogen bonds (52, 58, 109). In some cases, the presence of buried water molecules significantly improves the fit between allergen and antibody surfaces, allowing for stronger binding (75).



**FIGURE 7 |** Ratio of amino acid frequencies (AA freq.) in the epitopes to the amino acid frequencies on allergen surfaces. A ratio value above 1 indicates that a particular amino acid is observed more often in the epitopes in comparison with the allergen surfaces.



**FIGURE 8 | (A)** Number of H-bonds between paratopes and epitopes. H-bonds formed by residues from heavy chains are indicated in blue and H-bonds formed by residues from light chains are in light blue. **(B)** Number of hydrogen bonds formed by side chain (green) or main chain atoms (orange) of the antibodies. Calculations were made with PDBePISA (92), and only H-bonds for which distances between donor and acceptors were below 3.3 Å were taken into consideration.

## IDENTIFICATION OF IgE ANTIBODY BINDING EPITOPES

The most interesting complexes for allergy research are with human IgE, but they are also the most challenging to obtain. One of the main limitations to defining epitopes for human IgE has been the difficulty of obtaining human IgE monoclonal antibodies in the amounts required for crystallography or NMR. IgE is polyclonal and present in low concentrations in blood (ng/mL). B cells expressing IgE circulate in low frequency in peripheral blood ( $3 \times 10^{-7}$  to  $7 \times 10^{-6}$ ) (110), which makes it difficult to isolate and grow them in primary cultures. Historically, several alternative methods were developed.

One approach to study the human IgE repertoire is to isolate IgE antibody constructs from phage display combinatorial libraries prepared using peripheral blood mononuclear cells (PBMC) of allergic subjects (111–113). Basically, antibody heavy chains are combined with light chains from the same or a different subject, to form IgE antibody constructs that are displayed by phagemids. These constructs are then isolated based on their allergen specificity in a selection process called panning. Such technology relies on the fact that antibody specificity largely resides in the heavy chain variable domain and its third hypervariable loop (H CDR3) (66). Phage display technology led to the isolation of IgG1 antibody constructs with IgE variable domains against Bos d 5 from cow and Phl p 2 from timothy

grass pollen, and the allergen-antibody Fab complexes were determined by X-ray crystallography (**Table 2**) (63, 64). Since the antibodies were isolated using IgE combinatorial libraries, it is not known whether light and heavy chain pairing corresponds to that observed in antibodies produced by allergic individuals. Both structures are useful, as they currently provide the closest picture of the interactions between allergens and IgE that take place in humans.

The structure of the Bos d 5-antibody complex illustrates an additional important phenomenon, namely the importance of the oligomerization state or quaternary structure of the allergen. Bos d 5 is a dimer in the reported structure (114). Dimerization of an allergen allows for cross-linking of IgE receptors with the same antibody. Localization of IgE epitopes clearly illustrates why, for allergens forming homo-oligomers, only one epitope per protein chain is sufficient for the allergic reaction to be triggered (115, 116). For example, a cockroach Bla g 2 mutant with amino acid substitutions that prevented dimerization induced less  $\beta$ -hexosaminidase release from mast cells than the dimeric wild-type Bla g 2, suggesting a functional role of dimerization in allergenicity (50). Dimerization of an allergen also provides an opportunity to use a single mAb binding for capture and detection in a “sandwich” ELISA (115, 117).

Other studies addressed allergen epitope mapping using indirect approaches. A cluster of several IgE antibody binding epitopes was located on the C-terminal domain of Phl p 1 using human IgE obtained by phage display technology. In combination with site-directed mutagenesis, the authors designed a hypoallergenic group 1 grass pollen allergen fragment (118). Two other studies used IgE constructs from phage display libraries to map epitopes on Phl p 5 and Bet v 1 (119, 120). Four independent epitope clusters on Phl p 5.0101 and two on Phl p 5.0201 were identified (119). Four Bet v 1-specific IgE (for one of which the structure was determined) were identified that targeted two non-overlapping epitopes in Bet v 1, as assessed by immunological assays (120).

Recently, a house dust mite Der p 2-specific IgG mAb overlapping with IgE was mapped by X-ray crystallography and site-directed mutagenesis analysis. A Der p 2-specific IgE construct isolated from a single-chain variable fragment (scFv)-encoding phagemid library recognized the same main residues as the IgG, further confirming the relevance of this epitope to human health (58). These studies underline the utility of using constructs derived from phage display technology to investigate the antigenic determinants relevant to allergy.

Alternative approaches to isolate antibodies are based on sorting single B cells for amplification of mRNA that encodes for the antibody. They have proven effective for identifying the exact pairing of IgG heavy and light chains, but not for B cells expressing IgE due to their low frequency in blood (121). A study used single B cell RT-PCR to obtain allergen-specific IgG antibody pairings (122). In addition, heavy chain variable gene sequences of IgE antibodies were obtained by deep sequencing PBMCs, but this study did not lead to the production of allergen-specific native pairs for IgE. One recent publication reports single B cell sorting combined with RNAseq as an approach to obtain human IgE mAb against peanut allergens (123). However, large

amounts of sequencing (currently at very high cost) would be required to obtain sequences of the full IgE repertoire using this technology.

A new approach to isolate human IgE monoclonal antibodies has emerged using hybridoma technology (124). Individuals are selected according to their specific IgE sensitization, and their B cells are screened for allergen-specific IgE reactivity before fusion with myeloma cells to create hybridomas. This is an advantage versus the RT-PCR approach, in which the allergen-specificity is not known until recombinant antibodies are expressed based on the sequences obtained. Using this technology, several allergen-specific antibodies were isolated and are being used for IgE epitope mapping by X-ray crystallography and NMR (125–127). It should be noted that this method is still labor intensive, but compared to the other approaches, the clones contain the natural pairing of the heavy and light chains increasing the relevance of this technology.

## EPITOPES DEFINED BY NUCLEAR MAGNETIC RESONANCE (NMR)

Because of the limitations in the size of proteins for which NMR can determine structures, NMR experiments to determine allergen epitopes necessarily involve clever experimental design and accurate interpretation. In well-designed experiments, the data provides atom-specific information on the epitope region, which can be readily understood in the context of the allergen structure. The following section describes the design and range of applicability of various NMR designed experiments.

### NMR Protection Assays

The earliest NMR epitope mapping experiments designed by Yvonne Paterson and co-workers were protection assays that measured the exchange rate of amide protons for deuterons in an antigen with and without the antibody present, similar to the HDX-MS (128). Instead of measuring a change in mass, the approach takes advantage of the fact that protons and deuterons resonate at very different frequencies. The exchange of protons for deuterons leads to a disappearance of observable  $^1\text{H}$  frequencies in the antigen. In the Paterson design, the antibody was covalently linked to beads to make an affinity column. Subsequently, the antigen in solution was added to the column and allowed to bind the antibody. The buffer was then easily changed from  $^1\text{H}_2\text{O}$  to  $^2\text{H}_2\text{O}$ , so the  $^1\text{H}$ -amide protons on the antigen surface could be exchanged for deuterons, except in the epitope that was protected by the antibody. Finally, the antigen was eluted at low pH to quench or stop further amide exchange. The cleverness of this design is that the antigen (smaller than the antibody, and therefore with better NMR properties) retains information about the protection. Paterson applied this method to the model antigen cytochrome c, and it was subsequently adapted for the allergens hen-egg lysozyme (Gal d 4) and Der p 2 (59, 129).

Each of these protection studies provided useful epitope mapping information for the antibodies analyzed. Paterson showed that one antibody protected from amide exchange 11

residues that were derived from 3 discontinuous peptides (128). The 3 peptides were all in close proximity on the crystal structure. The Der p 2 studies probed the epitopes of 3 murine mAb, one of which (epitope for mAb 7A1) was recently corroborated with a crystal structure, and further NMR data (see below) (58). However, only the protection assays for mAb 7A1 gave discontinuous epitope information. The absence of protection information for the other two antibodies does not imply that the other epitopes are linear. Instead, it was probably due to unfortunate circumstances where the exchange rate for protected versus non-protected was too fast to measure using the antibody column technology.

Additionally, in the lysozyme studies, it became apparent that not only could amides in the epitope be protected from exchange, but more distal atoms could show differences in exchange rate (129). This is understood to be due to conformational changes in the antigen, or changes in the folding-unfolding rate of the protein due to the formation of the complex with the antibody, which was also noticed by Paterson et al. (130). Interestingly, similar distal changes in exchange rate were observed for binding of the Fv fragment of the lysozyme antibody and the mAb 7A1 (58, 131). This is an important lesson for all NMR studies: proximal and distal changes in antigen conformation upon antibody binding can similarly influence the data, and it might be difficult to differentiate *a priori* which changes occur within the epitope. Therefore, it is frequently important to support the observed changes in the NMR data with additional information. This additional data could be proximity in the structure of atoms that experience NMR spectral changes, or data from mutant proteins and complimentary immunoassays to prove or disprove antibody binding.

The HDX-NMR protection assays were successful but have fallen out of favor for several reasons. First, creating an antibody column with enough capacity for an NMR experiment, typically 5–10 mg of antibody, can be cost prohibitive. Second, not all antigens survive the low pH required to quench the exchange. Third, NMR instrumentation improved and labeling techniques (132) with newer experiments [called TROSY (133, 134)] were developed to better observe larger complexes directly, obviating the need of using the antibody column and the measurement of exchange rates.

## NMR Direct Observation of Complexes

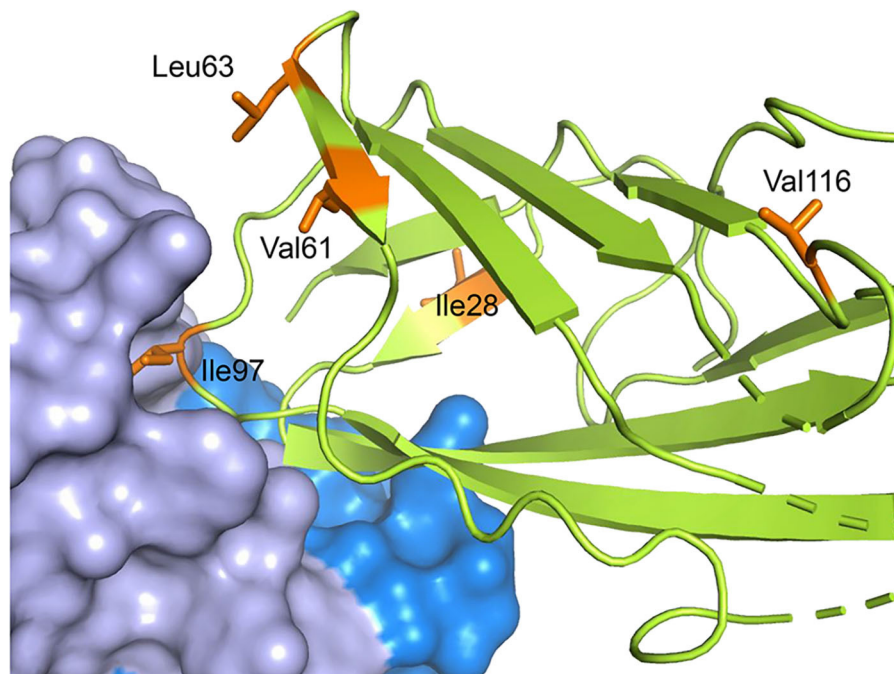
The “antibody”-allergen complex can now be directly observed with careful choices of the labeling scheme. Complete  $^{15}\text{N}$  backbone labeling of the allergen or antibody fragment such as Fab (~50 kDa) or scFv (~25 kDa) is sometimes possible. These amide detection techniques using antibody fragments have been successfully applied to the allergen Blo t 5 in complex with a Fab. A discontinuous epitope was identified by comparing the  $^1\text{H}$ - $^{15}\text{N}$  chemical shift perturbations of the bound and free allergen (135, 136). This epitope was shown to overlap with binding sites of patient polyclonal IgE. However, in our experience, the use of smaller forms of the whole antibody, such as Fab or scFv, in an attempt to increase NMR signals, has not always been successful. Some of these smaller antibody constructs are hard to produce,

and surprisingly, do not always maintain the high affinity of the full antibody for the antigen. Therefore, other techniques such as those below have been explored for NMR detection of allergen-antibody complexes.

A similar labeling scheme, but in a subtly different experiment, was used to map the Der f 2 epitopes of two full length murine IgG (150 kDa) (137). The authors again utilized  $^1\text{H}$ - $^{15}\text{N}$  labeled allergen, which would typically not be detectable at this large size when bound to antibody, assuming tight binding to the IgG. In this case, detergent was added to the sample to reduce the antibody affinity. As a result, in the NMR experiment the researchers were observing the allergen  $^1\text{H}$ - $^{15}\text{N}$  chemical shift perturbations between bound and free, with the smaller molecule in the free state being the one that was detected. The ratio of bound to free was tuned with the concentration of detergent so that there was a differential reduction or broadening in the NMR signals of those residues in proximity to the antibody compared to the free protein. The broadening is due to increased relaxation of the NMR signal due to the large fully  $^1\text{H}$  labeled antibody binding to the antigen (138). This same effect is noted below in other experiments. In the Der f 2 study, the differential exchange broadening data provided results that mapped the epitopes to two disparate regions of the protein, consistent with the simultaneous binding of the two antibodies. A potential disadvantage of this technique is that it requires empirical tuning of the solvent conditions, which may or may not be applicable to all systems.

Instead of looking at fragments of the antibody-allergen complex, or the free allergen in exchange with complex, it is also possible to utilize whole antibodies, but this requires another compromise in the labeling scheme. At the very high molecular weights of allergen-antibody complexes, usually only methyl groups are still observable in a background of otherwise  $^2\text{H}$  labeled proteins (132). Focusing on only labeling methyl groups in the allergen restricts the number of probes available for epitope mapping to the methyl groups of Val, Leu and Ile. The effectiveness of this was demonstrated for [ $\text{U}$ - $^2\text{H}$ ,  $^1\text{H}$ ,  $^{13}\text{C}$ -methyl Val, Leu, Ile] Der p 2 bound to an scFv fragment of mAb 7A1 (58). The data showed relaxation broadening for Ile-97 in the allergen, which was directly in contact with the scFv, and chemical shift perturbations for V63 and L61, which were adjacent to the epitope as described in a crystal structure (Figure 9). This is again consistent with previous observations that close proximity to the  $^1\text{H}$  antibody causes broadening or a disappearance of signal, and distal residues can also experience chemical shift perturbations (138).

Methyl labeled Der p 2 as described above was successfully applied to study 4 human IgE mAb epitopes and 3 murine IgG mAb epitopes (127). Similar data observations of broadening and chemical shift perturbations were analyzed to map the epitope regions. Since the epitope data is sparse, being only derived from a few methyl probes, it needs to be interpreted with caution. For each antibody, the data indicated that few residues in close proximity were broadened or perturbed, and this was consistent with previous mutagenesis studies or data from Der p 2 isoforms. The NMR data were in agreement with the relative epitope



**FIGURE 9 |** Residues both near and far from the epitope can be affected by antibody binding. The crystal structure of Der p 2 in complex with the murine IgG mAb 7A1 is shown with Der p 2 rendered in green with specific methyl residues highlighted in orange. The mAb 7A1 heavy and light chains are rendered as blue and lavender surfaces, respectively. The shift of methyl resonances of the orange residues upon complex formation were measured by NMR. The figure shows that residues proximal and distal from the epitope can be affected by binding to an antibody.

mapping obtained using competitive and direct antibody binding immunoassays, which demonstrated which epitopes did or did not overlap.

While these data are an impressive first mapping of human IgE epitopes, three important drawbacks of the technique need to be mentioned. First, it requires monoclonal antibodies, of which human IgE are very difficult to clone from patients. Although this technique may be applicable to polyclonal antibodies, its effectiveness remains to be demonstrated in this case.  $^1\text{H}$ - $^{15}\text{N}$  labeling of Art v 1 and Bet v 1 was combined with either pooled allergic sera, or individual allergic sera, respectively, but the NMR results were nebulous (139–141). Second, the methyl labeling is expensive, typically \$1,000 per liter of bacterial expression culture. Thus, high expression levels of the protein are needed to be cost effective. And third, as mentioned above, the distribution of sparse methyl groups may not be ideal for all allergens to get good epitope data. The paucity of data also requires a rather generous interpretation of which residues might be directly involved in the epitope. Hence, the epitopes proposed from these NMR data likely include more residues than the ones that are directly observed contacting the antibody in a crystal structure and should be further tested for functional importance.

In summary, a variety of NMR techniques and labeling schemes have been applied for allergen epitope mapping. In each case, atoms or residues specific to the epitope were successfully identified.

## FUTURE DIRECTIONS

Experimental epitope mapping of IgE antibodies on allergens originated ~30 years ago with the identification of mostly linear epitopes. Several breakthroughs have allowed the identification of conformational epitopes. These epitopes are the most common on allergens, especially on allergens for which exposure occurs by inhalation. Techniques such as recombinant technology, X-ray crystallography and nuclear magnetic resonance were developed and used for the determination of structures of allergen-antibody complexes. These advances required preparation of pure and homogeneous allergens and monoclonal antibodies. Initially, mostly IgG antibodies that inhibit IgE antibody binding were used as surrogates of IgE and fragmented for epitope mapping. Another approach led to the isolation of IgE antibody constructs using phage display technology. Only more recently, single cell antibody sequencing and human hybridoma technology are opening a new era of epitope mapping that will allow direct visualization of allergen-IgE antibody interactions in detail. Other technologies such as cryo-electron microscopy and labeling with mass spectrometry will also contribute to epitope mapping with less demanding protein amounts. Moreover, the experimental results allow for a significant development of many computational approaches to identify and/or analyze paratopes and epitopes (142). For example, approaches used in image recognition, like Zernike moments, were shown to be very promising in predicting B-cell epitopes (143–145). Therefore,

we expect that computational methods will start to play a more important role in studies of interactions between antibodies and allergens. Ultimately, identification of IgE antibody binding epitopes associated with the human IgE repertoire will contribute to understanding the immune response to allergens and will lead to the design of modified recombinant allergens for safer and more effective immunotherapy.

## AUTHOR CONTRIBUTIONS

AP designed, wrote, and edited the review. She especially wrote the sections about IgE epitope mapping. GM wrote the sections associated with NMR and cryo-EM. MC analyzed crystal structures of allergen-antibody complexes and wrote sections about X-ray crystallography and mass spectrometry.

GM and MC also contributed to editing the manuscript. All authors contributed to the article and approved the submitted version.

## FUNDING

Research reported in this publication was supported by the National Institute of Allergy and Infectious Diseases of the National Institutes of Health under Award Number R01AI077653 (to AP-contact PI-, MC). The content is solely the responsibility of the authors and does not necessarily represent the official views of the National Institutes of Health. This research was supported in part by the Intramural Research Program of the National Institute of Environmental Health Sciences (Z01-ES102906, GM).

## REFERENCES

- Greene WK, Thomas WR. IgE binding structures of the major house dust mite allergen Der p 1. *Mol Immunol.* (1992) 29:257–62. doi: 10.1016/0161-5890(92)90107-9
- Burks AW, Shin D, Cockrell G, Stanley JS, Helm RM, Bannon GA. Mapping and mutational analysis of the IgE-binding epitopes on Ara h 1, a legume vicilin protein and a major allergen in peanut hypersensitivity. *Eur J Biochem.* (1997) 245:334–9. doi: 10.1111/j.1432-1033.1997.t01-1-00334.x
- Pomés A. Relevant B cell epitopes in allergic disease. *Int Arch Allergy Immunol.* (2010) 152:1–11. doi: 10.1159/000260078
- Curin M, Weber M, Hofer G, Apostolovic D, Keller W, Reininger R, et al. Clustering of conformational IgE epitopes on the major dog allergen Can f 1. *Sci Rep.* (2017) 7:12135. doi: 10.1038/s41598-017-11672-5
- Pomés A, Chruszcz M, Gustchina A, Wlodawer A. Interfaces between allergen structure and diagnosis: know your epitopes. *Curr Allergy Asthma Rep.* (2015) 15:506. doi: 10.1007/s11882-014-0506-9
- Suprun M, Getts R, Raghunathan R, Grishina G, Witmer M, Gimenez G, et al. Novel bead-based epitope assay is a sensitive and reliable tool for profiling epitope-specific antibody repertoire in food allergy. *Sci Rep.* (2019) 9:18425. doi: 10.1038/s41598-019-54868-7
- Shreffler WG, Beyer K, Chu TH, Burks AW, Sampson HA. Microarray immunoassay: association of clinical history, *in vitro* IgE function, and heterogeneity of allergenic peanut epitopes. *J Allergy Clin Immunol.* (2004) 113:776–82. doi: 10.1016/j.jaci.2003.12.588
- Matsuo H, Yokooji T, Taogoshi T. Common food allergens and their IgE-binding epitopes. *Allergol Int.* (2015) 64:332–43. doi: 10.1016/j.alit.2015.06.009
- Kühne Y, Reese G, Ballmer-Weber BK, Niggemann B, Hanschmann KM, Vieths S, et al. A novel multipeptide microarray for the specific and sensitive mapping of linear IgE-binding epitopes of food allergens. *Int Arch Allergy Immunol.* (2015) 166:213–24. doi: 10.1159/000381344
- Ayuso R, Sanchez-Garcia S, Pascal M, Lin J, Grishina G, Fu Z, et al. Is epitope recognition of shrimp allergens useful to predict clinical reactivity? *Clin Exp Allergy.* (2012) 42:293–304. doi: 10.1111/j.1365-2222.2011.03920.x
- Wang J, Lin J, Bardina L, Goldis M, Nowak-Wegrzyn A, Shreffler WG, et al. Correlation of IgE/IgG4 milk epitopes and affinity of milk-specific IgE antibodies with different phenotypes of clinical milk allergy. *J Allergy Clin Immunol.* (2010) 125:695–702. doi: 10.1016/j.jaci.2009.12.017
- King TP, Jim SY, Monsalve RI, Kagey-Sobotka A, Lichtenstein LM, Spangfort MD. Recombinant allergens with reduced allergenicity but retaining immunogenicity of the natural allergens: hybrids of yellow jacket and paper wasp venom allergen antigen 5s. *J Immunol.* (2001) 166:6057–65. doi: 10.4049/jimmunol.166.10.6057
- Karisola P, Alenius H, Mikkola J, Kalkkinen N, Helin J, Pentikainen OT, et al. The major conformational IgE-binding epitopes of hevein (Hev b6.02) are identified by a novel chimera-based allergen epitope mapping strategy. *J Biol Chem.* (2002) 277:22656–61. doi: 10.1074/jbc.M201076200
- Gepp B, Lengger N, Bublin M, Hemmer W, Breiteneder H, Radauer C. Chimeras of Bet v 1 and Api g 1 reveal heterogeneous IgE responses in patients with birch pollen allergy. *J Allergy Clin Immunol.* (2014) 134:188–94. doi: 10.1016/j.jaci.2013.12.1073
- Davies JM, O’Hehir RE, Suphioglu C. Use of phage display technology to investigate allergen-antibody interactions. *J Allergy Clin Immunol.* (2000) 105(6 Pt 1):1085–92. doi: 10.1067/mai.2000.107040
- Tiwari R, Negi SS, Braun B, Braun W, Pomés A, Chapman MD, et al. Validation of a phage display and computational algorithm by mapping a conformational epitope of Bla g 2. *Int Arch Allergy Immunol.* (2012) 157:323–30. doi: 10.1159/000330108
- Bøgh KL, Nielsen H, Eiwegger T, Madsen CB, Mills EN, Rigby NM, et al. IgE versus IgG4 epitopes of the peanut allergen Ara h 1 in patients with severe allergy. *Mol Immunol.* (2014) 58:169–76. doi: 10.1016/j.molimm.2013.11.014
- Pomés A, Chruszcz M, Gustchina A, Minor W, Mueller GA, Pedersen LC, et al. 100 years later: celebrating the contributions of x-ray crystallography to allergy and clinical immunology. *J Allergy Clin Immunol.* (2015) 136:29–37. doi: 10.1016/j.jaci.2015.05.016
- Radauer C, Bublin M, Wagner S, Mari A, Breiteneder H. Allergens are distributed into few protein families and possess a restricted number of biochemical functions. *J Allergy Clin Immunol.* (2008) 121:847–52. doi: 10.1016/j.jaci.2008.01.025
- Radauer C, Breiteneder H. Pollen allergens are restricted to few protein families and show distinct patterns of species distribution. *J Allergy Clin Immunol.* (2006) 117:141–7. doi: 10.1016/j.jaci.2005.09.010
- Reginald K, Chew FT. Conformational IgE epitope mapping of Der p 2 and the evaluations of two candidate hypoallergens for immunotherapy. *Sci Rep.* (2018) 8:3391. doi: 10.1038/s41598-018-21792-1
- Dall’Antonia F, Gieras A, Devanaboyina SC, Valenta R, Keller W. Prediction of IgE-binding epitopes by means of allergen surface comparison and correlation to cross-reactivity. *J Allergy Clin Immunol.* (2011) 128:872–9. doi: 10.1016/j.jaci.2011.07.007
- Mueller GA, Pedersen LC, Glesner J, Edwards LL, Zakzuk J, London RE, et al. Analysis of glutathione S-transferase allergen cross-reactivity in a North American population: relevance for molecular diagnosis. *J Allergy Clin Immunol.* (2015) 136:1369–77. doi: 10.1016/j.jaci.2015.03.015
- Wlodawer A, Minor W, Dauter Z, Jaskolski M. Protein crystallography for non-crystallographers, or how to get the best (but not more) from published macromolecular structures. *FEBS J.* (2008) 275:1–21. doi: 10.1111/j.1742-4658.2007.06178.x
- Chruszcz M, Wlodawer A, Minor W. Determination of protein structures—a series of fortunate events. *Biophys J.* (2008) 95:1–9. doi: 10.1529/biophysj.108.131789

26. McPherson A, Gavira JA. Introduction to protein crystallization. *Acta Crystallogr F Struct Biol Commun.* (2014) 70(Pt 1):2–20. doi: 10.1107/S2053230X13033141
27. Egelman EH. The current revolution in cryo-EM. *Biophys J.* (2016) 110:1008–12. doi: 10.1016/j.bpj.2016.02.001
28. Merk A, Bartesaghi A, Banerjee S, Falconieri V, Rao P, Davis MI, et al. Breaking cryo-EM resolution barriers to facilitate drug discovery. *Cell.* (2016) 165:1698–707. doi: 10.1016/j.cell.2016.05.040
29. Wu M, Lander GC. How low can we go? Structure determination of small biological complexes using single-particle cryo-EM. *Curr Opin Struct Biol.* (2020) 64:9–16. doi: 10.1016/j.sbi.2020.05.007
30. Chi X, Yan R, Zhang J, Zhang G, Zhang Y, Hao M, et al. A neutralizing human antibody binds to the N-terminal domain of the Spike protein of SARS-CoV-2. *Science.* (2020) 369:650–5. doi: 10.1126/science.abc6952
31. Long F, Doyle M, Fernandez E, Miller AS, Klose T, Sevvana M, et al. Structural basis of a potent human monoclonal antibody against Zika virus targeting a quaternary epitope. *Proc Natl Acad Sci USA.* (2019) 116:1591–6. doi: 10.1073/pnas.1815432116
32. Bianchi M, Turner HL, Nogal B, Cottrell CA, Oyey D, Pauthner M, et al. Electron-microscopy-based epitope mapping defines specificities of polyclonal antibodies elicited during HIV-1 BG505 envelope trimer immunization. *Immunity.* (2018) 49:288–300. doi: 10.1016/j.immuni.2018.07.009
33. Stefanescu R, Iacob RE, Damoc EN, Marquardt A, Amstalden E, Manea M, et al. Mass spectrometric approaches for elucidation of antigen-antibody recognition structures in molecular immunology. *Eur J Mass Spectrom.* (2007) 13:69–75. doi: 10.1255/ejms.849
34. Opuni KFM, Al-Majdoub M, Yefremova Y, El-Kased RF, Koy C, Glocker MO. Mass spectrometric epitope mapping. *Mass Spectrom Rev.* (2018) 37:229–41. doi: 10.1002/mas.21516
35. Parker CE, Tomer KB. MALDI/MS-based epitope mapping of antigens bound to immobilized antibodies. *Mol Biotechnol.* (2002) 20:49–62. doi: 10.1385/MB:20:1:049
36. Gallagher ES, Hudgens JW. Mapping protein-ligand interactions with proteolytic fragmentation, hydrogen/deuterium exchange-mass spectrometry. *Methods Enzymol.* (2016) 566:357–404. doi: 10.1016/bs.mie.2015.08.010
37. Abbott WM, Damschroder MM, Lowe DC. Current approaches to fine mapping of antigen-antibody interactions. *Immunology.* (2014) 142:526–35. doi: 10.1111/imm.12284
38. Deng B, Zhu S, Macklin AM, Xu J, Lento C, Sljoka A, et al. Suppressing allostery in epitope mapping experiments using millisecond hydrogen / deuterium exchange mass spectrometry. *MAbs.* (2017) 9:1327–36. doi: 10.1080/19420862.2017.1379641
39. Houde D, Arndt J, Domeier W, Berkowitz S, Engen JR. Characterization of IgG1 conformation and conformational dynamics by hydrogen/deuterium exchange mass spectrometry. *Anal Chem.* (2009) 81:2644–51. doi: 10.1021/ac802575y
40. Maleknia SD, Ralston CY, Brenowitz MD, Downard KM, Chance MR. Determination of macromolecular folding and structure by synchrotron x-ray radiolysis techniques. *Anal Biochem.* (2001) 289:103–15. doi: 10.1006/abio.2000.4910
41. Maleknia SD, Downard KM. Protein footprinting with radical probe mass spectrometry- Two decades of achievement. *Protein Pept Lett.* (2019) 26:4–15. doi: 10.2174/0929866526666181128124241
42. Amit AG, Mariuzza RA, Phillips SE, Poljak RJ. Three-dimensional structure of an antigen-antibody complex at 2.8 Å resolution. *Science.* (1986) 233:747–53. doi: 10.1126/science.2426778
43. Sheriff S, Silverton EW, Padlan EA, Cohen GH, Smith-Gill SJ, Finzel BC, et al. Three-dimensional structure of an antibody-antigen complex. *Proc Natl Acad Sci USA.* (1987) 84:8075–9. doi: 10.1073/pnas.84.22.8075
44. Padlan EA, Silverton EW, Sheriff S, Cohen GH, Smith-Gill SJ, Davies DR. Structure of an antibody-antigen complex: crystal structure of the HyHEL-10 Fab-lysozyme complex. *Proc Natl Acad Sci USA.* (1989) 86:5938–42. doi: 10.1073/pnas.86.15.5938
45. Fischmann TO, Bentley GA, Bhat TN, Boulot G, Mariuzza RA, Phillips SE, et al. Crystallographic refinement of the three-dimensional structure of the FabD1.3-lysozyme complex at 2.5-Å resolution. *J Biol Chem.* (1991) 266:12915–20. doi: 10.2210/pdb1fdl/pdb
46. Braden BC, Souchon H, Eisele JL, Bentley GA, Bhat TN, Navaza J, et al. Three-dimensional structures of the free and the antigen-complexed Fab from monoclonal anti-lysozyme antibody D44.1. *J Mol Biol.* (1994) 243:767–81. doi: 10.1016/0022-2836(94)90046-9
47. Cohen GH, Silverton EW, Padlan EA, Dyda F, Wibbenmeyer JA, Willson RC, et al. Water molecules in the antibody-antigen interface of the structure of the Fab HyHEL-5-lysozyme complex at 1.7 Å resolution: comparison with results from isothermal titration calorimetry. *Acta Crystallogr D Biol Crystallogr.* (2005) 61(Pt 5):628–33. doi: 10.1107/S0907444905007870
48. Padavattan S, Schirmer T, Schmidt M, Akdis C, Valenta R, Mittermann I, et al. Identification of a B-cell epitope of hyaluronidase, a major bee venom allergen, from its crystal structure in complex with a specific Fab. *J Mol Biol.* (2007) 368:742–52. doi: 10.1016/j.jmb.2007.02.036
49. Mirza O, Henriksen A, Ipsen H, Larsen JN, Wissenbach M, Spangfort MD, et al. Dominant epitopes and allergic cross-reactivity: complex formation between a Fab fragment of a monoclonal murine IgG antibody and the major allergen from birch pollen Bet v 1. *J Immunol.* (2000) 165:331–8. doi: 10.4049/jimmunol.165.1.331
50. Li M, Gustchina A, Alexandratos J, Wlodawer A, Wunschmann S, Kepley CL, et al. Crystal structure of a dimerized cockroach allergen Bla g 2 complexed with a monoclonal antibody. *J Biol Chem.* (2008) 283:22806–14. doi: 10.1074/jbc.M800937200
51. Glesner J, Wunschmann S, Li M, Gustchina A, Wlodawer A, Himly M, et al. Mechanisms of allergen-antibody interaction of cockroach allergen Bla g 2 with monoclonal antibodies that inhibit IgE antibody binding. *PLoS ONE.* (2011) 6:e22223. doi: 10.1371/journal.pone.0022223
52. Li M, Gustchina A, Glesner J, Wunschmann S, Vailes LD, Chapman MD, et al. Carbohydrates contribute to the interactions between cockroach allergen Bla g 2 and a monoclonal antibody. *J Immunol.* (2011) 186:333–40. doi: 10.4049/jimmunol.1002318
53. Chruszcz M, Pomés A, Glesner J, Vailes LD, Osinski T, Porebski PJ, et al. Molecular determinants for antibody binding on group 1 house dust mite allergens. *J Biol Chem.* (2012) 287:7388–98. doi: 10.1074/jbc.M111.311159
54. Heymann PW, Chapman MD, Platts-Mills TA. Antigen Der f I from the dust mite *Dermatophagoides farinae*: structural comparison with Der p I from *Dermatophagoides pteronyssinus* and epitope specificity of murine IgG and human IgE antibodies. *J Immunol.* (1986) 137:2841–7.
55. Chapman MD, Heymann PW, Platts-Mills TA. Epitope mapping of two major inhalant allergens, Der p I and Der f I, from mites of the genus *Dermatophagoides*. *J Immunol.* (1987) 139:1479–84.
56. Osinski T, Pomés A, Majorek KA, Glesner J, Offermann LR, Vailes LD, et al. Structural analysis of Der p 1-antibody complexes and comparison with complexes of proteins or peptides with monoclonal antibodies. *J Immunol.* (2015) 195:307–16. doi: 10.4049/jimmunol.1402199
57. Chapman MD, Sutherland WM, Platts-Mills TA. Recognition of two *Dermatophagoides pteronyssinus*-specific epitopes on antigen P1 by using monoclonal antibodies: binding to each epitope can be inhibited by serum from dust mite-allergic patients. *J Immunol.* (1984) 133:2488–95.
58. Glesner J, Kapingidza AB, Godzwon M, Offermann LR, Mueller GA, DeRose EF, et al. A human IgE antibody binding site on Der p 2 for the design of a recombinant allergen for immunotherapy. *J Immunol.* (2019) 203:2545–56. doi: 10.4049/jimmunol.1900580
59. Mueller GA, Smith AM, Chapman MD, Rule GS, Benjamin DC. Hydrogen exchange nuclear magnetic resonance spectroscopy mapping of antibody epitopes on the house dust mite allergen Der p 2. *J Biol Chem.* (2001) 276:9359–65. doi: 10.1074/jbc.M010812200
60. Orenco JM, Radin AR, Kamat V, Badithe A, Ben LH, Bennett BL, et al. Treating cat allergy with monoclonal IgG antibodies that bind allergen and prevent IgE engagement. *Nat Commun.* (2018) 9:1421. doi: 10.1038/s41467-018-03636-8
61. Rouet R, Dudgeon K, Christie M, Langley D, Christ D. Fully human VH single domains that rival the stability and cleft recognition of camelid antibodies. *J Biol Chem.* (2015) 290:11905–17. doi: 10.1074/jbc.M114.614842
62. Mitropoulou AN, Bowen H, Dodev TS, Davies AM, Bax HJ, Beavil RL, et al. Structure of a patient-derived antibody in complex with allergen



- reveals simultaneous conventional and superantigen-like recognition. *Proc Natl Acad Sci USA*. (2018) 115:E8707–16. doi: 10.1073/pnas.1806840115
63. Niemi M, Jylha S, Laukkanen ML, Soderlund H, Makinen-Kiljunen S, Kallio JM, et al. Molecular interactions between a recombinant IgE antibody and the beta-lactoglobulin allergen. *Structure*. (2007) 15:1413–21. doi: 10.1016/j.str.2007.09.012
  64. Padavattan S, Flicker S, Schirmer T, Madritsch C, Randow S, Reese G, et al. High-affinity IgE recognition of a conformational epitope of the major respiratory allergen Phl p 2 as revealed by X-ray crystallography. *J Immunol*. (2009) 182:2141–51. doi: 10.4049/jimmunol.0803018
  65. Bodelón G, Palomino C, Fernández LÁ. Immunoglobulin domains in *Escherichia coli* and other enterobacteria: from pathogenesis to applications in antibody technologies. *FEMS Microbiol Rev*. (2013) 37:204–50. doi: 10.1111/j.1574-6976.2012.00347.x
  66. Xu JL, Davis MM. Diversity in the CDR3 region of V(H) is sufficient for most antibody specificities. *Immunity*. (2000) 13:37–45. doi: 10.1016/S1074-7613(00)00006-6
  67. Glesner J, Vailes LD, Schlachter C, Mank N, Minor W, Osinski T, et al. Antigenic determinants of Der p 1: specificity and cross-reactivity associated with IgE antibody recognition. *J Immunol*. (2017) 198:1334–44. doi: 10.4049/jimmunol.1600072
  68. Kabat EA, Wu TT. Attempts to locate complementarity-determining residues in the variable positions of light and heavy chains. *Ann NY Acad Sci*. (1971) 190:382–93. doi: 10.1111/j.1749-6632.1971.tb13550.x
  69. Chothia C, Lesk AM. Canonical structures for the hypervariable regions of immunoglobulins. *J Mol Biol*. (1987) 196:901–17. doi: 10.1016/0022-2836(87)90412-8
  70. MacCallum RM, Martin AC, Thornton JM. Antibody-antigen interactions: contact analysis and binding site topography. *J Mol Biol*. (1996) 262:732–45. doi: 10.1006/jmbi.1996.0548
  71. Gustchina A, Li M, Wünschmann S, Chapman MD, Pomés A, Wlodawer A. Crystal structure of cockroach allergen Bla g 2, an unusual zinc binding aspartic protease with a novel mode of self-inhibition. *J Mol Biol*. (2005) 348:433–44. doi: 10.1016/j.jmb.2005.02.062
  72. Wünschmann S, Gustchina A, Chapman MD, Pomés A. Cockroach allergen Bla g 2: an unusual aspartic proteinase. *J Allergy Clin Immunol*. (2005) 116:140–5. doi: 10.1016/j.jaci.2005.04.024
  73. Woodfolk JA, Glesner J, Wright PW, Kempley CL, Li M, Himly M, et al. Antigenic determinants of the bilobal cockroach allergen Bla g 2. *J Biol Chem*. (2016) 291:2288–301. doi: 10.1074/jbc.M115.702324
  74. Hamers-Casterman C, Atarhouch T, Muyldermans S, Robinson G, Hamers C, Songa EB, et al. Naturally occurring antibodies devoid of light chains. *Nature*. (1993) 363:446–8. doi: 10.1038/363446a0
  75. Kapingidza AB, Kowal K, Chruszcz M. Antigen-antibody complexes. *Subcell Biochem*. (2020) 94:465–97. doi: 10.1007/978-3-030-41769-7\_19
  76. Ward ES, Güssow D, Griffiths AD, Jones PT, Winter G. Binding activities of a repertoire of single immunoglobulin variable domains secreted from *Escherichia coli*. *Nature*. (1989) 341:544–6. doi: 10.1038/341544a0
  77. Henry KA, MacKenzie CR. Antigen recognition by single-domain antibodies: structural latitudes and constraints. *MAbs*. (2018) 10:815–26. doi: 10.1080/19420862.2018.1489633
  78. Harmsen MM, Ruuls RC, Nijman JJ, Niewold TA, Frenken LG, de GB. Llama heavy-chain V regions consist of at least four distinct subfamilies revealing novel sequence features. *Mol Immunol*. (2000) 37:579–90. doi: 10.1016/S0161-5890(00)00081-X
  79. De GE, Silence K, Decanniere K, Conrath K, Loris R, Kinne J, et al. Molecular basis for the preferential cleft recognition by dromedary heavy-chain antibodies. *Proc Natl Acad Sci USA*. (2006) 103:4586–91. doi: 10.1073/pnas.0505379103
  80. Saphire EO, Stanfield RL, Crispin MD, Parren PW, Rudd PM, Dwek RA, et al. Contrasting IgG structures reveal extreme asymmetry and flexibility. *J Mol Biol*. (2002) 319:9–18. doi: 10.1016/S0022-2836(02)00244-9
  81. Kourentzi K, Srinivasan M, Smith-Gill SJ, Willson RC. Conformational flexibility and kinetic complexity in antibody-antigen interactions. *J Mol Recognit*. (2008) 21:114–21. doi: 10.1002/jmr.874
  82. Keskin O. Binding induced conformational changes of proteins correlate with their intrinsic fluctuations: a case study of antibodies. *BMC Struct Biol*. (2007) 7:31. doi: 10.1186/1472-6807-7-31
  83. Liang Y, Guttman M, Davenport TM, Hu SL, Lee KK. Probing the impact of local structural dynamics of conformational epitopes on antibody recognition. *Biochemistry*. (2016) 55:2197–213. doi: 10.1021/acs.biochem.5b01354
  84. Krishnan L, Sahni G, Kaur KJ, Salunke DM. Role of antibody paratope conformational flexibility in the manifestation of molecular mimicry. *Biophys J*. (2008) 94:1367–76. doi: 10.1529/biophysj.107.108654
  85. Adhikary R, Yu W, Oda M, Walker RC, Chen T, Stanfield RL, et al. Adaptive mutations alter antibody structure and dynamics during affinity maturation. *Biochemistry*. (2015) 54:2085–93. doi: 10.1021/bi501417q
  86. Lees WD, Stejskal L, Moss DS, Shepherd AJ. Investigating substitutions in antibody-antigen complexes using molecular dynamics: a case study with broad-spectrum, influenza A antibodies. *Front Immunol*. (2017) 8:143. doi: 10.3389/fimmu.2017.00143
  87. Fernández-Quintero ML, Heiss MC, Pomarici ND, Math BA, Liedl KR. Antibody CDR loops as ensembles in solution vs. canonical clusters from X-ray structures. *MAbs*. (2020) 12:1744328. doi: 10.1080/19420862.2020.1744328
  88. Fernández-Quintero ML, Loeffler JR, Kraml J, Kahler U, Kamenik AS, Liedl KR. Characterizing the diversity of the CDR-H3 loop conformational ensembles in relationship to antibody binding properties. *Front Immunol*. (2018) 9:3065. doi: 10.3389/fimmu.2018.03065
  89. Fernández-Quintero ML, Math BA, Loeffler JR, Liedl KR. Transitions of CDR-L3 loop canonical cluster conformations on the micro-to-millisecond timescale. *Front Immunol*. (2019) 10:2652. doi: 10.3389/fimmu.2019.02652
  90. Teplyakov A, Obmolova G, Malia TJ, Luo J, Muzammil S, Sweet R, et al. Structural diversity in a human antibody germline library. *MAbs*. (2016) 8:1045–63. doi: 10.1080/19420862.2016.1190060
  91. Dall'Antonia F, Pavkov-Keller T, Zangger K, Keller W. Structure of allergens and structure based epitope predictions. *Methods*. (2013) 66:3–21. doi: 10.1016/j.ymeth.2013.07.024
  92. Krissinel E, Henrick K. Inference of macromolecular assemblies from crystalline state. *J Mol Biol*. (2007) 372:774–97. doi: 10.1016/j.jmb.2007.05.022
  93. Kunik V, Ofra Y. The indistinguishability of epitopes from protein surface is explained by the distinct binding preferences of each of the six antigen-binding loops. *Protein Eng Des Sel*. (2013) 26:599–609. doi: 10.1093/protein/gzt027
  94. Fellouse FA, Wiesmann C, Sidhu SS. Synthetic antibodies from a four-amino-acid code: a dominant role for tyrosine in antigen recognition. *Proc Natl Acad Sci USA*. (2004) 101:12467–72. doi: 10.1073/pnas.0401786101
  95. Fellouse FA, Barthelemy PA, Kelley RF, Sidhu SS. Tyrosine plays a dominant functional role in the paratope of a synthetic antibody derived from a four amino acid code. *J Mol Biol*. (2006) 357:100–14. doi: 10.1016/j.jmb.2005.11.092
  96. Kringlel JV, Nielsen M, Padkjær SB, Lund O. Structural analysis of B-cell epitopes in antibody:protein complexes. *Mol Immunol*. (2013) 53:24–34. doi: 10.1016/j.molimm.2012.06.001
  97. Nguyen MN, Pradhan MR, Verma C, Zhong P. The interfacial character of antibody paratopes: analysis of antibody-antigen structures. *Bioinformatics*. (2017) 33:2971–6. doi: 10.1093/bioinformatics/btx389
  98. Yan C, Wu F, Jernigan RL, Dobbs D, Honavar V. Characterization of protein-protein interfaces. *Protein J*. (2008) 27:59–70. doi: 10.1007/s10930-007-9108-x
  99. Wu D, Sun J, Xu T, Wang S, Li G, Li Y, et al. Stacking and energetic contribution of aromatic islands at the binding interface of antibody proteins. *Immunome Res*. (2010) 6(Suppl 1):S1. doi: 10.1186/1745-7580-6-S1-S1
  100. Van Oss CJ. Hydrophobic, hydrophilic and other interactions in epitope-paratope binding. *Mol Immunol*. (1995) 32:199–211. doi: 10.1016/0161-5890(94)00124-J
  101. Ramaraj T, Angel T, Dratz EA, Jesaitis AJ, Mumey B. Antigen-antibody interface properties: composition, residue interactions, and features of 53 non-redundant structures. *Biochim Biophys Acta*. (2012) 1824:520–32. doi: 10.1016/j.bbapap.2011.12.007
  102. Sinha N, Mohan S, Lipschultz CA, Smith-Gill SJ. Differences in electrostatic properties at antibody-antigen binding sites: implications

- for specificity and cross-reactivity. *Biophys J.* (2002) 83:2946–68. doi: 10.1016/S0006-3495(02)75302-2
103. Sinha N, Li Y, Lipschultz CA, Smith-Gill SJ. Understanding antibody-antigen associations by molecular dynamics simulations: detection of important intra- and inter-molecular salt bridges. *Cell Biochem Biophys.* (2007) 47:361–75. doi: 10.1007/s12013-007-0031-8
  104. Arzhanik V, Svistunova D, Koliashnikov O, Egorov AM. Interaction of antibodies with aromatic ligands: the role of pi-stacking. *J Bioinform Comput Biol.* (2010) 8:471–83. doi: 10.1142/S0219720010004835
  105. Dalkas GA, Teheux F, Kwasigroch JM, Rooman M. Cation- $\pi$ , amino- $\pi$ ,  $\pi$ - $\pi$ , and H-bond interactions stabilize antigen-antibody interfaces. *Proteins.* (2014) 82:1734–46. doi: 10.1002/prot.24527
  106. Do DC, Yang S, Yao X, Hamilton RG, Schroeder JT, Gao P. N-glycan in cockroach allergen regulates human basophil function. *Immun Inflamm Dis.* (2017) 5:386–99. doi: 10.1002/iid3.145
  107. Altmann F. The role of protein glycosylation in allergy. *Int Arch Allergy Immunol.* (2007) 142:99–115. doi: 10.1159/000096114
  108. Commins SP. Carbohydrates as allergens. *Curr Allergy Asthma Rep.* (2015) 15:492. doi: 10.1007/s11882-014-0492-y
  109. Braden BC, Fields BA, Poljak RJ. Conservation of water molecules in an antibody-antigen interaction. *J Mol Recognit.* (1995) 8:317–25. doi: 10.1002/jmr.300080505
  110. Horst A, Hunzelmann N, Arce S, Herber M, Manz RA, Radbruch A, et al. Detection and characterization of plasma cells in peripheral blood: correlation of IgE+ plasma cell frequency with IgE serum titre. *Clin Exp Immunol.* (2002) 130:370–8. doi: 10.1046/j.1365-2249.2002.02025.x
  111. Levin M, Levander F, Palmason R, Greiff L, Ohlin M. Antibody-encoding repertoires of bone marrow and peripheral blood—a focus on IgE. *J Allergy Clin Immunol.* (2017) 139:1026–30. doi: 10.1016/j.jaci.2016.06.040
  112. Levin M, King JJ, Glanville J, Jackson KJ, Looney TJ, Hoh RA, et al. Persistence and evolution of allergen-specific IgE repertoires during subcutaneous specific immunotherapy. *J Allergy Clin Immunol.* (2016) 137:1535–44. doi: 10.1016/j.jaci.2015.09.027
  113. Gadermaier E, Levin M, Flicker S, Ohlin M. The human IgE repertoire. *Int Arch Allergy Immunol.* (2014) 163:77–91. doi: 10.1159/000355947
  114. Niemi M, Janis J, Jylhä S, Kallio JM, Hakulinen N, Laukkanen ML, et al. Characterization and crystallization of a recombinant IgE Fab fragment in complex with the bovine beta-lactoglobulin allergen. *Acta Crystallogr Sect F Struct Biol Cryst Commun.* (2008) 64(Pt 1):25–8. doi: 10.1107/S174430910706160X
  115. Chruszcz M, Chapman MD, Osinski T, Solberg R, Demas M, Porebski PJ, et al. *Alternaria alternata* allergen Alt a 1: a unique beta-barrel protein dimer found exclusively in fungi. *J Allergy Clin Immunol.* (2012) 130:241–7. doi: 10.1016/j.jaci.2012.03.047
  116. Rouvinen J, Jänis J, Laukkanen ML, Jylhä S, Niemi M, Päivinen T, et al. Transient dimers of allergens. *PLoS ONE.* (2010) 5:e9037. doi: 10.1371/journal.pone.0009037
  117. Zhao L, Zhao L, Zhang B, Robotham JM, Roux KH, Tang H. Identification of a common Ara h 3 epitope recognized by both the capture and the detection monoclonal antibodies in an ELISA detection kit. *PLoS ONE.* (2017) 12:e0182935. doi: 10.1371/journal.pone.0182935
  118. Levin M, Rydnert F, Kallstrom E, Tan LW, Wormald PJ, Lindstedt M, et al. Phl p 1-specific human monoclonal IgE and design of a hypoallergenic group 1 grass pollen allergen fragment. *J Immunol.* (2013) 191:551–60. doi: 10.4049/jimmunol.1202051
  119. Levin M, Rothus S, Wendel S, Najafi N, Källström E, Focke-Tejkl M, et al. Multiple independent IgE epitopes on the highly allergenic grass pollen allergen Phl p 5. *Clin Exp Allergy.* (2014) 44:1409–19. doi: 10.1111/cea.12423
  120. Levin M, Davies AM, Liljekvist M, Carlsson F, Gould HJ, Sutton BJ, et al. Human IgE against the major allergen Bet v 1 - defining an epitope with limited cross-reactivity between different PR-10 family proteins. *Clin Exp Allergy.* (2014) 44:288–99. doi: 10.1111/cea.12230
  121. Tiller T, Meffre E, Yurasov S, Tsuiji M, Nussenzweig MC, Wardemann H. Efficient generation of monoclonal antibodies from single human B cells by single cell RT-PCR and expression vector cloning. *J Immunol Methods.* (2008) 329:112–24. doi: 10.1016/j.jim.2007.09.017
  122. Hoh RA, Joshi SA, Liu Y, Wang C, Roskin KM, Lee JY, et al. Single B-cell deconvolution of peanut-specific antibody responses in allergic patients. *J Allergy Clin Immunol.* (2016) 137:157–67. doi: 10.1016/j.jaci.2015.05.029
  123. Croote D, Darmanis S, Nadeau KC, Quake SR. High-affinity allergen-specific human antibodies cloned from single IgE B cell transcriptomes. *Science.* (2018) 362:1306–9. doi: 10.1126/science.aau2599
  124. Wurth MA, Hadadianpour A, Horvath DJ, Daniel J, Bogdan O, Goleniewska K, et al. Human IgE mAbs define variability in commercial *Aspergillus* extract allergen composition. *JCI Insight.* (2018) 3:e123387. doi: 10.1172/jci.insight.123387
  125. Pomés A, Glesner J, Horvath DJ, Chapman MD, Smith SA. First naturally occurring human IgE antibody against mite allergen Der p 2. *J Allergy Clin Immunol.* (2017) 139:AB260. doi: 10.1016/j.jaci.2016.12.837
  126. Pomés A, Glesner J, Horvath DJ, Wünschmann S, Chapman MD, Smith SA. Human IgE monoclonal antibodies with natural heavy and light chain pairing and specificity for asthma-associated allergens. *Allergy.* (2017) 72:11. doi: 10.1111/all.13250
  127. Mueller GA, Glesner J, Daniel JL, Zhang J, Hyde N, Richardson CR, et al. Mapping human monoclonal IgE epitopes on the major dust mite allergen Der p 2. *J Immunol.* (2020). doi: 10.4049/jimmunol.2000295
  128. Paterson Y, Englander SW, Roder H. An antibody binding site on cytochrome c defined by hydrogen exchange and two-dimensional NMR. *Science.* (1990) 249:755–9. doi: 10.1126/science.1697101
  129. Williams DC Jr, Benjamin DC, Poljak RJ, Rule GS. Global changes in amide hydrogen exchange rates for a protein antigen in complex with three different antibodies. *J Mol Biol.* (1996) 257:866–76. doi: 10.1006/jmbi.199.6.0207
  130. Mayne L, Paterson Y, Cerasoli D, Englander SW. Effect of antibody binding on protein motions studied by hydrogen-exchange labeling and two-dimensional NMR. *Biochemistry.* (1992) 31:10678–85. doi: 10.1021/bi00159a006
  131. Williams DC Jr, Rule GS, Poljak RJ, Benjamin DC. Reduction in the amide hydrogen exchange rates of an anti-lysozyme Fv fragment due to formation of the Fv-lysozyme complex. *J Mol Biol.* (1997) 270:751–62. doi: 10.1006/jmbi.1997.1122
  132. Goto NK, Gardner KH, Mueller GA, Willis RC, Kay LE. A robust and cost-effective method for the production of Val, Leu, Ile (delta 1) methyl-protonated 15N-, 13C-, 2H-labeled proteins. *J Biomol NMR.* (1999) 13:369–74. doi: 10.1023/A:1008393201236
  133. Pervushin KV, Wider G, Wuthrich K. Single transition-to-single transition polarization transfer (ST2-PT) in [15N,1H]-TROSY. *J Biomol NMR.* (1998) 12:345–8. doi: 10.1023/A:1008268930690
  134. Salzmann M, Pervushin K, Wider G, Senn H, Wuthrich K. TROSY in triple-resonance experiments: new perspectives for sequential NMR assignment of large proteins. *Proc Natl Acad Sci USA.* (1998) 95:13585–90. doi: 10.1073/pnas.95.23.13585
  135. Naik MT, Chang CF, Kuo IC, Kung CC, Yi FC, Chua KY, et al. Roles of structure and structural dynamics in the antibody recognition of the allergen proteins: an NMR study on *Blomia tropicalis* major allergen. *Structure.* (2008) 16:125–36. doi: 10.1016/j.str.2007.10.022
  136. Naik MT, Chang CF, Kuo IC, Yu T, Fang PJ, Chua KY, et al. Complete 1H, 13C and 15N resonance assignments of Blo t 5, a major mite allergen from *Blomia tropicalis*. *J Biomol NMR.* (2007) 38:189. doi: 10.1007/s10858-006-9113-y
  137. Ichikawa S, Takai T, Inoue T, Yuuki T, Okumura Y, Ogura K, et al. NMR study on the major mite allergen Der f 2: its refined tertiary structure, epitopes for monoclonal antibodies and characteristics shared by ML protein group members. *J Biochem.* (2005) 137:255–63. doi: 10.1093/jb/mvi039
  138. Hamel DJ, Dahlquist FW. The contact interface of a 120 kD CheA-CheW complex by methyl TROSY interaction spectroscopy. *J Am Chem Soc.* (2005) 127:9676–7. doi: 10.1021/ja052517m
  139. Razzera G, Gadermaier G, de P, V, Almeida MS, Egger M, Jahn-Schmid B, et al. Mapping the interactions between a major pollen allergen and human IgE antibodies. *Structure.* (2010) 18:1011–21. doi: 10.1016/j.str.2010.05.012

140. Asam C, Batista AL, Moraes AH, de Paula VS, Almeida FC, Aglas L, et al. Bet v 1 - a Trojan horse for small ligands boosting allergic sensitization? *Clin Exp Allergy*. (2014) 44:1083–93. doi: 10.1111/cea.12361
141. Mueller GA. Contributions and future directions for structural biology in the study of allergens. *Int Arch Allergy Immunol*. (2017) 174:57–66. doi: 10.1159/000481078
142. Yao B, Zheng D, Liang S, Zhang C. Conformational B-cell epitope prediction on antigen protein structures: a review of current algorithms and comparison with common binding site prediction methods. *PLoS ONE*. (2013) 8:e62249. doi: 10.1371/journal.pone.0062249
143. Di RL, Milanetti E, Lepore R, Olimpieri PP, Tramontano A. Superposition-free comparison and clustering of antibody binding sites: implications for the prediction of the nature of their antigen. *Sci Rep*. (2017) 7:45053. doi: 10.1038/srep45053
144. Jespersen MC, Mahajan S, Peters B, Nielsen M, Marcatili P. Antibody specific B-cell epitope predictions: leveraging information from antibody-antigen protein complexes. *Front Immunol*. (2019) 10:298. doi: 10.3389/fimmu.2019.00298
145. Graves J, Byerly J, Priego E, Makkapati N, Parish SV, Medellin B, et al. A review of deep learning methods for antibodies. *Antibodies*. (2020) 9:12. doi: 10.3390/antib9020012

**Conflict of Interest:** AP was employed by the company Indoor Biotechnologies, Inc. She is the contact PI of the R01 Award that funded this manuscript.

The remaining authors declare that the research was conducted in the absence of any commercial or financial relationships that could be construed as a potential conflict of interest.

The handling editor declared a past co-authorship with one of the authors AP.

Copyright © 2020 Pomés, Mueller and Chruszcz. This is an open-access article distributed under the terms of the Creative Commons Attribution License (CC BY). The use, distribution or reproduction in other forums is permitted, provided the original author(s) and the copyright owner(s) are credited and that the original publication in this journal is cited, in accordance with accepted academic practice. No use, distribution or reproduction is permitted which does not comply with these terms.