



Peripheral Blood Classical Monocytes and Plasma Interleukin 10 Are Associated to Neoadjuvant Chemotherapy Response in Breast Cancer Patients

OPEN ACCESS

Edited by:

Brian J. Czerniecki,
Moffitt Cancer Center, United States

Reviewed by:

Jennifer Keating Litton,
University of Texas MD Anderson
Cancer Center, United States

Manisha Singh,
University of Texas MD Anderson
Cancer Center, United States

*Correspondence:

Cesar Sánchez
csanchez@med.puc.cl
Alexis M. Kalergis
akalergis@bio.puc.cl;
akalergis@icloud.com

Specialty section:

This article was submitted to
Cancer Immunity and Immunotherapy,
a section of the journal
Frontiers in Immunology

Received: 21 January 2020

Accepted: 02 June 2020

Published: 09 July 2020

Citation:

Valdés-Ferrada J, Muñoz-Durango N,
Pérez-Sepulveda A, Muñoz S,
Coronado-Arrázola I, Acevedo F,
Soto JA, Bueno SM, Sánchez C and
Kalergis AM (2020) Peripheral Blood
Classical Monocytes and Plasma
Interleukin 10 Are Associated to
Neoadjuvant Chemotherapy
Response in Breast Cancer Patients.
Front. Immunol. 11:1413.
doi: 10.3389/fimmu.2020.01413

Javier Valdés-Ferrada¹, Natalia Muñoz-Durango¹, Alejandra Pérez-Sepulveda²,
Sabrina Muñoz², Irenice Coronado-Arrázola¹, Francisco Acevedo², Jorge A. Soto¹,
Susan M. Bueno¹, Cesar Sánchez^{2*} and Alexis M. Kalergis^{1,3*}

¹ Instituto Milenio de Inmunología e Inmunoterapia, Departamento de Genética Molecular y Microbiología, Facultad de Ciencias Biológicas, Pontificia Universidad Católica de Chile, Santiago, Chile, ² Departamento de Hematología-Oncología, Facultad de Medicina, Pontificia Universidad Católica de Chile, Santiago, Chile, ³ Instituto Milenio de Inmunología e Inmunoterapia, Departamento de Endocrinología, Facultad de Medicina, Pontificia Universidad Católica de Chile, Santiago, Chile

Worldwide, breast cancer (BC) is the leading cause of cancer death among women. For many patients the most effective treatment is a resection surgery that removes the tumor. Within this subset, patients sometimes receive chemotherapy treatment (CT) prior to surgery aiming to reduce tumor size in order to preserve healthy breast tissue. This strategy is commonly called neoadjuvant chemotherapy (NAC). This approach also offers an opportunity to determine treatment sensitivity, especially in aggressive tumors. Post NAC absence of residual disease is associated to long term survival in BC patients and is used to define the need of adjuvant therapy options. Studies suggest that NAC allows the recognition of tumor antigens by immune cells potentiating the eradication of the tumor. However, the dynamic changes in patients' immune cells under NAC remain unclear. Here, we assessed changes in leucocyte and cytokine profiles in order to determine its association to NAC response in BC patients. Peripheral blood patient samples were taken prior to each NAC cycle to assess the abundance of leukocyte subsets and serum cytokines in 20 patients. These immunological features were associated with clinical outcomes including pathological response. We found a positive correlation between plasma Interleukin 10 (IL-10) and classical monocytes in HER2+ BC patients under NAC. We also observed a trend between increased IL-10 and classical monocytes levels and lower rates of pathologic complete response at the end of NAC. These data support the notion that monocyte subsets and IL-10 could be applied as a novel indicator of NAC efficacy in HER2+ BC patients. Finally, we confirm a key role of the immune system in cancer progression and CT response.

Keywords: breast cancer, monocytes, cytokines, neoadjuvant chemotherapy, prognosis

INTRODUCTION

Currently, breast cancer (BC) is the most common cancer among women and the second most common overall. Only in 2018, a total of >2 million new cases were diagnosed (1). As occurs with other malignancies, BC is highly heterogeneous; BC subtypes include estrogen receptor (ER) positive (often called Luminal), human epidermal growth factor receptor type-2 (HER2)-enriched and triple negative breast cancer (TNBC). Some subtypes correlate with clinical and pathological characteristics, for example TNBC and HER2-enriched are more sensitive to chemotherapy (CT). To date, surgery is the most effective BC treatment. Sometimes, patients receive CT prior to surgery with the purpose of reducing tumor size in order to preserve healthy breast tissue. This strategy is called neoadjuvant chemotherapy (NAC). In this setting, pathologic complete response (pCR) is a useful clinical biomarker related to overall survival (2).

The immune system plays a pivotal role in cancer development and progression. Recently the widespread use of immune checkpoint modulators has revolutionize treatment for several solid neoplasms (3). In fact, Atezolizumab (an anti PDL-1 antibody) and Pembrolizumab (Anti PD-1 antibody) have been successfully used in TNBC, improving overall survival but only in the subgroup of tumors expressing high levels of programmed cell death ligand 1 (PD-L1-stained tumor-infiltrating immune cells of any intensity covering $\geq 1\%$ of the tumor area), as determined by a U.S. Food and Drug Administration (FDA)-approved test (4), and pCR in the neoadjuvant setting; respectively (5). Specifically, clinical follow up of the PD-L1-positive subgroup treated with atezolizumab displayed significantly higher median progression-free survival (7.5 months) than did the PD-L1-positive subgroup treated with placebo, who displayed lower median progression-free survival (5.0 months) (4).

Inflammation favors tumor growth, metastatic spread and progression (6), it also increases oxidative stress and cell damage, leading to genomic alterations, aberrant gene expression and mutations (7). Tumor cells may also express molecules, such as surface calreticulin, tumor antigens or NKG2D ligands (8). These molecules are recognized by CD8⁺ effector cells and NK cells that target and destroy tumor cells (9). In a previous study, our group suggested that high neutrophil/lymphocyte ratio (NLR) in complete blood counts (CBC) could act as a predictor of death in BC patients (10).

Immune myeloid cells, such as macrophages, myeloid-derived suppressor cells (MDSC), and monocytes have been recently shown to play a major role in BC (11). Studies have shown increases in circulating MDSC in BC patient undergoing NAC treatment (12). Also, taxanes, alquilants (one of the main drugs using in NAC) may promote the generation of anti-tumorigenic

human macrophages *in vitro* (13). However, the role of monocytes in BC is still unclear.

On the other hand, inflammatory markers, such as cytokines, play a crucial role for tumor progression. In particular, IFN γ and IL-10 have opposite roles in cancer (14). High IFN γ levels are associated to anti-tumor responses and a pro-inflammatory microenvironment (15). Activated CD8⁺ T cells release IFN γ inhibiting tumor cell proliferation and angiogenesis (15). Conversely, IL-10 contributes to tumor growth by inducing an immune response and an anti-inflammatory microenvironment that promotes tumor escape from immune surveillance (16). In general, increased IL-10 levels are associated to poorer prognosis, however its precise role in BC progression remains not fully understood (17).

Herein, we sought to correlate changes in leukocyte population subsets and cytokines levels in BC patients receiving NAC with pCR rates. We hypothesized that monocyte subsets and IL-10 could serve as predictive markers for pCR in these patients.

METHODS

Study Goal

The Millennium Institute of Immunology and Immunotherapy (MIII) in collaboration with the Cancer Center of the *Pontificia Universidad Católica de Chile* and the *Complejo Asistencial Doctor Sótero del Río* leded the currently work. The main aim of the study was to evaluate whether the changes in population subsets of leucocytes in peripheral blood samples from patients with BC under NAC treatment could be useful as indicator of the efficacy of such treatment.

Patient Recruitment, Chemotherapy Treatment, and Study Design

Adult (>18-year-old) female BC patients selected for NAC treatment were enrolled into this study. Intravenous NAC protocol consisted of four cycles of doxorubicin (DOX - 60 mg/m²) plus cyclophosphamide (600 mg/m²) every 21 days, followed by 12 doses of paclitaxel (PXL 90 mg/m²) weekly (3 doses of PLX (21 days) corresponding to one cycle). Additionally, HER2-enriched BC patients received trastuzumab (600 mg) every 3 weeks for 1 year. Blood samples were collected prior to the first DOX dose of each cycle and prior to the first PXL dose of each cycle. Blood samples were used to perform hemograms obtain peripheral blood mononuclear cells (PBMC) and serum. A total of eight time points were evaluated throughout the NAC treatment (Figure 1A).

Purification of Peripheral Blood Mononuclear Cells From Blood Samples

Blood samples were collected in EDTA-tubes; PBMC were extracted with lymphocyte separation medium (LSM) according to the manufacturer's protocol (Corning, 25-072-CV, Virginia, USA). Viable PBMC were counted in Neubauer chamber using Trypan Blue staining. Purified PBMCs were frozen in 10%FBS-DMSO. Vials were stored at -80°C overnight and then transferred into -150°C until used.

Abbreviations: BC, Breast Cancer; NAC, Neoadjuvant Chemotherapy; HER2, Human epidermal growth factor receptor type 2; ALC, Absolute lymphocyte count; AMC, Absolute monocyte count; ANC, Absolute neutrophil count; ER, Estrogen receptor; TN, Triple negative; PBMC, Peripheral blood mononuclear cells; MDSC, Myeloid derived suppressor cells; NLR, Neutrophil to Lymphocyte Ratio; PLX, Paclitaxel; DOX, Doxorubicine; pCR, Pathologic complete response.

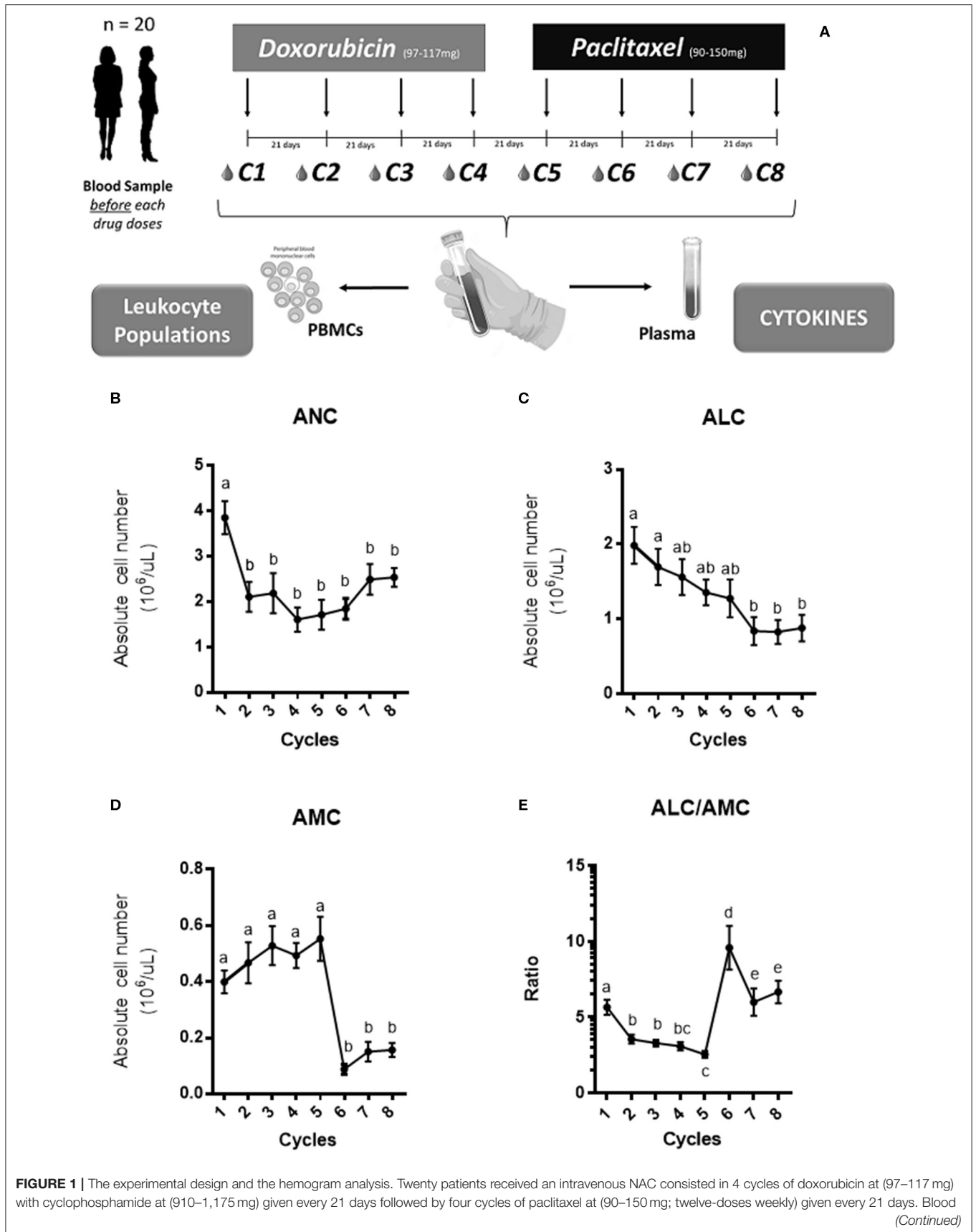


FIGURE 1 | samples were collected before the first dose of the drug in each cycle **(A)**. Both peripheral blood mononuclear cells (PBMC) and plasma were obtained to measure leukocyte cells and cytokines levels, respectively. The absolute neutrophil count (ANC), absolute lymphocyte count (ALC) and absolute monocyte count (AMC) across the NAC is shown in **(B–D)**, respectively. The ratio between both subsets ALC/AMC across the NAC is shown in **(E)**. The concentration for each cell group was expressed in $10^6/\mu\text{l}$ and the mean with SEM was displayed. The statistical significances were assessed using a One-way ANOVA test and the significant differences were grouped in letters.

Flow Cytometry Analyses

To evaluate the leukocyte populations, 5×10^5 cells of the thawed PBMCs were seeded in 96-well plates (Additional file 1: **Figure S1**) and stained with a panel of humans antibodies CD4-PE (Clone, RPA-T4 BD bioscience), CD8-BB515 (Clone, RPA-T8 BD bioscience), CD3-PeCy7 (Clone, SK7 BD bioscience), CD14-BV510 (Clone, M0P9 BD bioscience), CD16-APC (Clone, 3G8 BD bioscience) and CD56-BUV-395 (Clone, NCAM16.2 BD bioscience), according to manufacturer instructions. Cells were resuspended in 100 μl of PBS 1%FBS containing the mix of antibodies and incubated at 4°C for 30 min. After incubation, cells were washed twice with PBS and centrifuged at 400 g for 5 min at 4°C . Then, the cell pellet was resuspended in 200 μl of PBS 1%FBS. Samples were acquired at the LSRFortessa X20 flow cytometer (BD Biosciences) and analyzed using FlowJo v10.0.7 software (BD Biosciences). Gating strategy used to identify lymphoid and myeloid subsets is showed in additional file 1: **Figure S1**.

Plasma Extraction and Cytokines Measurement From Blood Samples

Blood samples were centrifuged at 2,500 rpm at room temperature for 15 min. Then, plasma was removed, and 2 ml aliquots were frozen at -80°C . Plasma cytokines were quantified using the OptEIA™ human IFN γ and IL-10 kits (Biosciences BD) according to the manufacturer's protocol.

Assessment of Clinical Responses

Biopsies were obtained at the beginning of the study to confirm BC diagnosis and to identify tumor subtype (2, 18). Also, at the end of NAC (8th cycle) all patients were subjected to tumor resection and histopathological analyses were performed to evaluate the pathologic response defined as a total, partial or not-response. The histopathological studies were performed by an expert clinician under blind methodology.

In vitro PBMC Stimulation Assay

To evaluate the cytokine profile across the NAC treatment in BC patients, 500,000 PBMCs/well (previously thawed) were seeded and stimulated with $5 \mu\text{g}/\text{ml}$ of $\alpha\text{CD3}/\text{CD28}$, $2.5 \mu\text{g}/\text{ml}$ of concanavalin A (ConA) or $0.5 \mu\text{g}/\text{ml}$ of lipopolysaccharide (LPS). Unstimulated cells were included as negative controls. The cells were incubated for 48 h at 37°C 5% CO_2 . After the incubation, the cells were separated, and supernatant was collected for the future assay. Afterwards, the levels of IFN- γ and IL-10 cytokines of these samples were measured by ELISA according to manufacturing protocol (Biosciences BD IFN γ , and IL-10 BD OptEIA™ human kits).

TABLE 1 | Clinical characteristics of patients.

Characteristics	N (%)
Total of patients	20
Age (years)	
Median	46
Range	30–62
Weight (kg)	
Median	79
Range	58–100
BMI (kg/m^2)	
Median	29.5
Range	20–39
Tumor HER2	
Positive	14 (70)
Negative	6 (30)
BC Subtype	
ER+	13 (65)
HER2-enriched	5 (25)
TN	2 (10)

BMI, Body Mass Index; HER2, Human Epidermal growth factor type 2 receptor; BC, Breast cancer; ER+, Estrogen Receptor positive; TN, Triple Negative.

Statistical Analyses

Statistical analyses were performed in GraphPad v.6.0. Statistical significance was assessed by One-way or Two-way ANOVA followed by Tukey's post-test. Spearman correlation was assessed to study the relationships among BC types and cell subsets. Finally, a contingency table analyzed Chi-square or Fisher's test for the pCR data. Statistical significance was set at $p < 0.05$ and r values in a range between -1 and 1 .

RESULTS

Patient Characteristics

A total of 20 BC patients were recruited into this study. Clinical characteristics are summarized in **Table 1**. In line with previous reports in the Chilean population median age was 48 years (range: 30–62) (19). Median weight and body mass index (BMI) were 79 kg and 29.5; respectively. Regarding BC subtypes, the most frequent was ER+ ($n = 13$) followed by HER2 enriched ($n = 5$) and TNBC ($n = 2$). Confirming the subtype distribution previously reported by our research group (20, 21).

BC Patients Under NAC Showed Decreasing Leukocyte Counts

As shown in **Figure 1A**, NAC was associated to a reduction of leukocyte counts in all patients. Then, to assess the impact of

CT in specific leukocyte subpopulations we quantified absolute neutrophil count (ANC), the absolute lymphocyte count (ALC) and absolute monocyte count (AMC) from CBC. We found that ANC and ALC decreased significantly along the NAC (Figures 1A,B). On the other hand, AMC levels increased during the first cycles of NAC and decreased after the 5th cycle (Figure 1C). Finally, we calculated the monocyte/lymphocyte ratio; Figure 1D shows an increase in AMC/ALC during the first NAC cycles followed by a drastic decrease after the 5th cycle, concomitant to the switch in chemotherapeutic drug. Both lymphopenia (22) and neutropenia (23) are commonly seen in patients under CT treatment and could explain this decrease.

Across NAC Cycles, Classical and Non-classical Monocytes Subsets Show a Dynamic Change in Their Proportions

In order to assess changes in mononuclear cell populations associated to NAC we performed flow cytometry analyses. First, we focused on the CD4⁺ and CD8⁺ T lymphocytes along with NK (CD3^{Neg} CD56⁺) and NKT (CD3⁺ CD56⁺) cells (8, 14, 24). Then, to understand the potential contribution of monocytes during NAC we classified these cells as classical (CD3^{Neg} CD14^{High} CD16^{Neg}) or non-classical (CD3^{Neg} CD14⁺ CD16^{High}) monocytes according to surface markers (25, 26). Neither CD4 nor CD8 T cells displayed significant differences in their percentages across NAC (Figures 2A,B). Similar results were obtained for NK (CD3^{Neg} CD56⁺) and NKT cells (CD3⁺ CD56⁺) (Figures 2C,D). Classical monocytes (CD3^{Neg} CD14^{High} CD16^{Neg}) increased significantly after the first cycle of NAC with DOX and remained high. After the PXL treatment was started (6th cycle), classical monocytes decreased but the percentage of these cells was later restored. Importantly, non-classical monocytes (CD3^{Neg} CD14⁺ CD16^{High}) significantly decreased after the first cycle of NAC and tended to increase during the 6th cycle (Figure 2E), displaying an opposite pattern compared to classical monocytes (Figure 2F). In summary, flow cytometry analyses confirmed hemogram results shown in Figure 1, demonstrating dynamic changes in monocyte populations by NAC. According to our data, these increased numbers of AMC in peripheral blood could be due to classical monocytes (CD3^{Neg} CD14^{High} CD16^{Neg}).

IL-10 and IFN γ Plasma Levels Increase During NAC in BC Patients

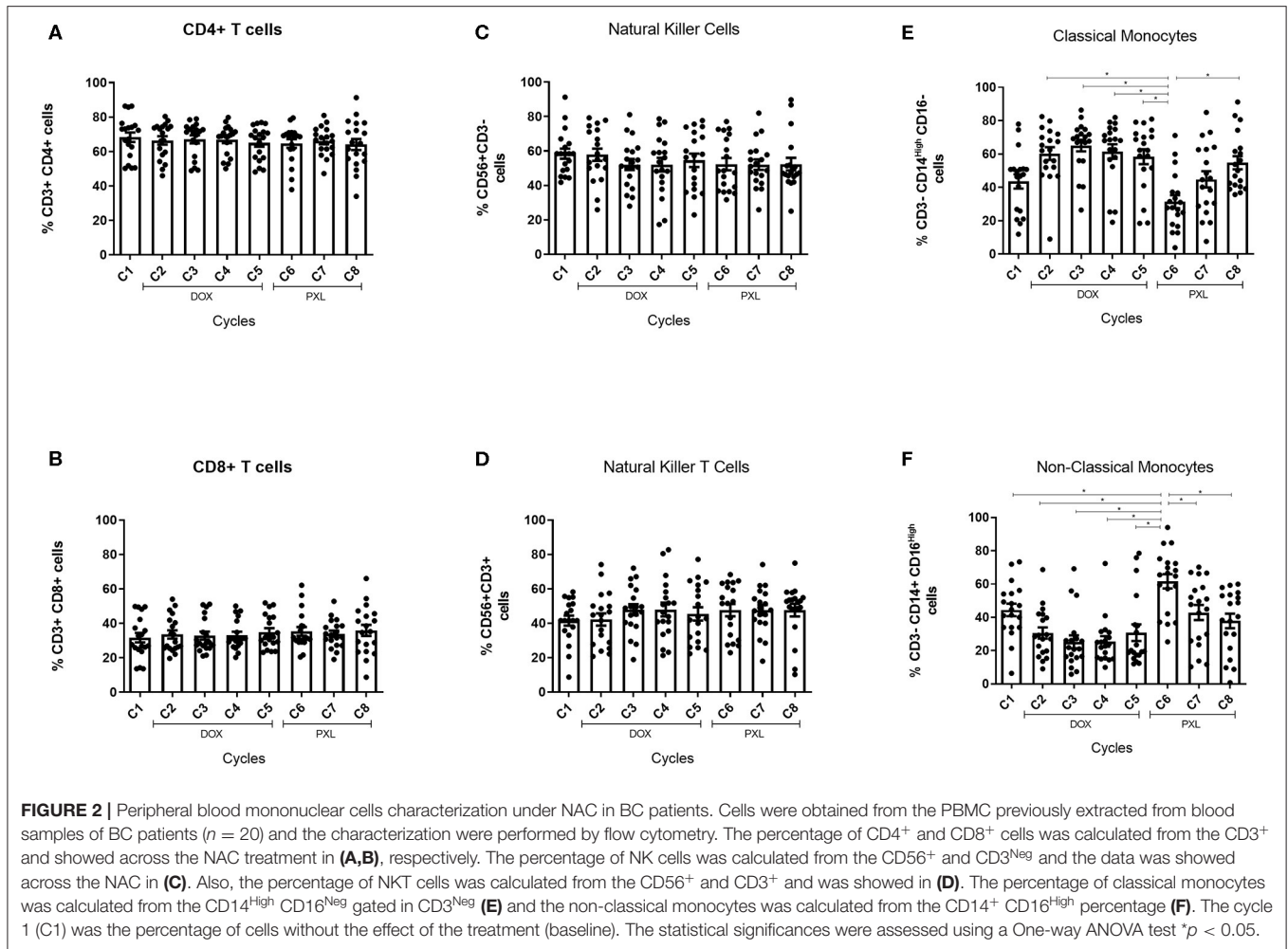
In addition to peripheral leukocytes, we measured serum cytokines during NAC. While IFN γ plasma levels showed a tendency to increase ($p = 0.1333$) during the NAC/DOX treatment (Figure 3A), the levels of this cytokine remained stable during PLX treatment (Figure 3B). Similarly, IL-10 levels significantly increased during DOX treatment between the first and third NAC cycle ($p = 0.0332$; Figure 3C); IL-10 levels also remained stable during PLX treatment (Figure 3D). We also measured the plasma levels of IL-12 (non-detected), TNF- α and TGF- β (Additional file 2: Figure S2), but we did not see any tendency or secretion profile during NAC.

Percentage of Classical Monocytes Decreased During NAC and Non-classical Monocytes Increased in HER2-Enriched and Luminal Breast Cancers

Since monocyte subsets were the only population that showed significant changes by NAC treatment (Figure 1), we analyzed the distribution of these cells by BC subtypes. We grouped the percentage of classical or non-classical monocytes by ER+ and HER2-enriched BC (Figure 4). TNBC subtype was excluded from this analysis given the low number of patients ($n = 2$). Importantly, the percentage of classical monocytes cells (CD3^{Neg} CD14^{High} CD16^{Neg}) increased during treatment with DOX and decreased with PLX, showing a significant difference compared with the 6th NAC cycle in ER+ BC patients (Figure 4A). Nevertheless, classical monocytes in HER2+ BC patients only showed a tendency to increase across cycles (Figure 4B). On the other hand, non-classical monocytes (CD3^{Neg} CD14⁺ CD16^{High}) tended to decrease with DOX and to increase with PLX in both subtypes showing significant difference against the 6th NAC cycle in the ER+ BC subtype (Figure 4C). In summary, significant differences between cycles were only found in the luminal group for both monocyte subsets. In addition, an opposite distribution was showed for classical and non-classical monocytes across the NAC (Figures 4A,C).

Increased Levels of IL-10 Correlate With Increased Percentage of Non-classical Monocytes in HER2 Enriched Breast Cancer

Next, correlation analyses between IFN γ or IL-10 plasma levels and the percentage of non-classical and classical monocytes were performed across the NAC and the ER+ or HER2-enriched BC (Figure 5). No significant correlations in ER+ BC for cytokine levels and monocyte subsets were observed ($p = 0.2195$ for IFN γ and $p = 0.8426$ for IL-10). However, the IFN γ levels showed a tendency to a positive Spearman coefficient in classical monocytes ($r = 0.4884$) and a negative one ($r = -0.3729$) in non-classical monocytes (Figures 5A,C, respectively). Remarkably, the IFN γ levels in HER2-enriched BC did not show a significant correlation for any monocyte subset ($p = 0.1105$ for Figure 5B and $p = 0.0853$ for Figure 5D). However, the highest Spearman coefficient ($r = 0.6071$) for classical monocytes suggests a correlation between increasing levels of IFN γ and high percentage of classical monocytes (Figure 5B). In addition, an inverse correlation was found between non-classical monocytes and IFN γ levels (Figure 5D) ($r = -0.6433$). On the other hand, the cytokine levels grouped by monocytes subset in HER2-enriched BC showed a significant correlation between IL-10 levels for both classical monocytes and non-classical monocytes ($p = 0.0331$ and $p = 0.0161$, respectively) (Figures 5B,D). The highest levels of IL-10 were correlated with high percentages of classical monocytes with a positive Spearman coefficient ($r = 0.7474$) (Figure 5B). On the other hand, an opposite correlation is showed for non-classical



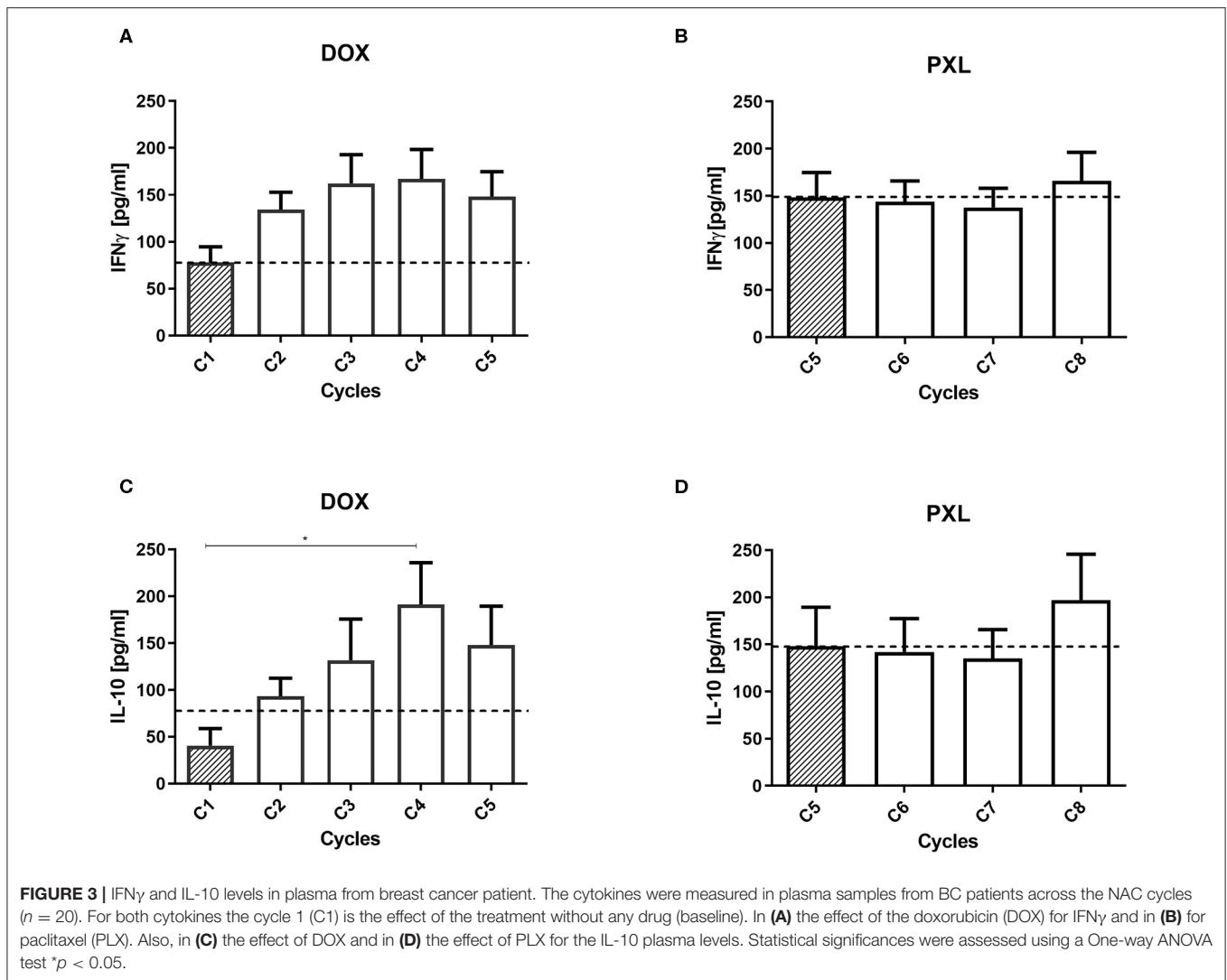
monocytes and the IL-10 levels in HER2-enriched patients. The lowest levels of IL-10 were correlated with high percentage of non-classical monocytes and a negative Spearman coefficient ($r = -0.8027$) (Figure 5D). In summary, only for HER2-enriched patients and IL-10 levels we saw a significant difference between monocytes subsets.

To explore the potential source of IFN- γ and IL-10, PBMC were stimulated *in vitro* with three different molecules, each of them to promote cytokine production from lymphoid (Concanavalin A or anti-CD3/CD28) or myeloid cells (LPS) (27, 28). The main source of IFN- γ came from these cells stimulated with Concanavalin A or anti-CD3/CD28, indicating that the source was from lymphoid cells (Figure 6A). In contrast, the levels of IFN- γ obtained from myeloid cells stimulated with LPS was significantly lower (Figure 6A). On the other hand, secretion of IL-10 was induced with all stimuli used (Figure 6B); however, the main source of IL-10 secretion came from myeloid cells that respond to LPS stimulation (Figure 6B). In addition, only cell stimulated with LPS displayed a significant increasing IL-10 production across NAC cycles, displayed the higher level at cycles 4 and 5 (Figure 6B). After cycle 5 only cells stimulated with LPS decreased the levels of IL-10 secretion, in contrast

with levels of IL-10 secreted from lymphocytes stimulated with Concanavalin A and anti-CD3/CD28. Above results suggest that main source of IL-10 during NAC coming from myeloid cells.

IL-10 Levels and Classical Monocytes From a Pathologic Complete Response May Be Used as a Predictive Indicator in Breast Cancer Patients

To associate the changes observed during the NAC in monocyte populations, IL-10 and IFN γ with the clinical outcome, we calculated the proportion of pCR based in the histological analyses of biopsies obtained from definitive surgery of the primary tumor. Results were classified as total responder for those patient biopsies that displayed no residual invasive tumor, partial responder for those patient biopsies with a moderate response to the NAC, and no response in patients without an effect of the NAC in the biopsies. We built contingency tables for pathological response and plasma cytokines (Table 2), and the peripheral blood monocytes (Table 3). We divided the cytokine levels and the monocyte subsets percentage in low and high.

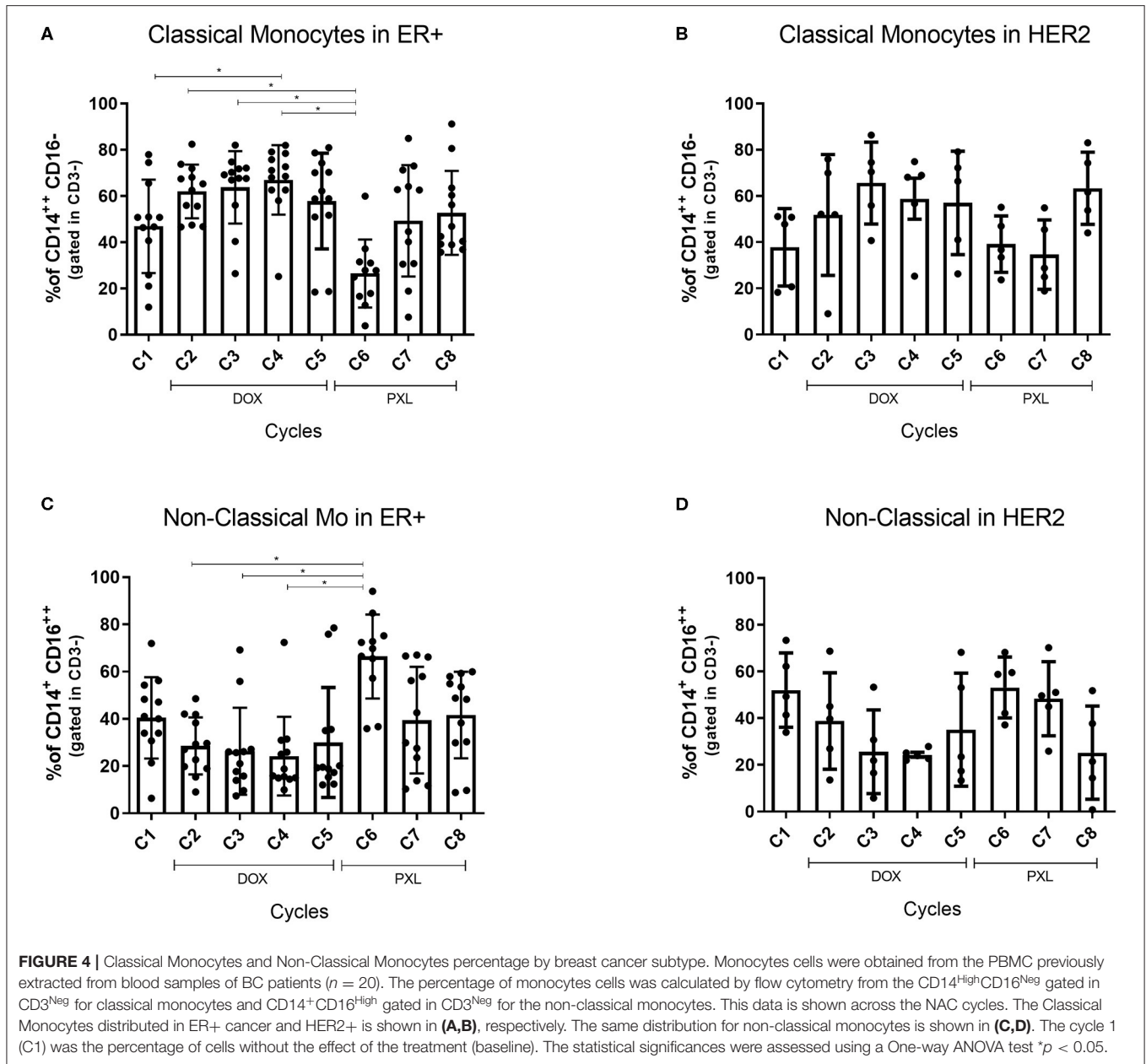


These parameters were determined by the basal levels observed in the first cycle of NAC. Unfortunately, we did not obtain enough blood sample in the last NAC cycle for each patient to perform both analyses, therefore our total of patients decreased from 20 to 15 in **Table 2** and from 20 to 19 in **Table 3**. Both tables contain the number of patients for each category previously described. We perform a Fisher's test to evaluate the association between the cytokine levels and the pathological response. We found that highest levels of IL-10 were associated with a partial response, but without a statistically significant results ($p = 0.1357$ for IL-10 and $p = 0.3287$ for IFN γ). Furthermore, the relative risk for IL-10 was 3 (95% CI 0.7799–11.540) and 2 for IFN γ (95% CI 0.6102–6.555). For the monocytes subsets analyses, we perform a Chi-square test. In the same way, a highest percentage of classical monocytes showed to be more frequent in patients with partial response. However, there was no statistically significant difference between the subset's percentage and the pCR ($p = 0.2690$ for classical monocytes and $p = 0.5174$ for non-classical monocytes).

DISCUSSION

Inflammation (29) is widely recognized as a “hallmark of cancer” (30). Chronic systemic inflammation correlates with poorer outcomes in BC patients (31). Systemic markers, such as cytokines secretion or changes in leukocytes ratios could help to obtain a more accurate clinical follow up. These changes could also serve as prognostic factors in patients receiving CT (17, 31, 32).

In agreement with our results, a study in BC patients reported no differences in CD4⁺/CD8⁺ or NK cells by NAC (33). The ratio of peripheral leukocytes have been used as prognostic factors for chemotherapeutic interventions (31). Previously, we and others have reported that the neutrophil-to lymphocyte ratio (NLR) could be useful as prognosis factor in BC confirming a role of myeloid cells in this malignancy (10). Lymphocyte to monocyte ratio (LMR) has also been explored as predictor for progression in BC patients under NAC (34–36). Accordingly, low LMR patients displayed shorter disease-free survival, suggesting



a prognostic role of LMR. However, none of these studies found a significant correlation with pCR (35). Consequently, our study was not limited to peripheral monocytes counts prior and after NAC, it also included LMR and phenotypic changes in monocytes subsets during NAC.

In clinical studies the presence of $CD14^{+}CD16^{+}$ cells indicates inflammatory disease (37). These monocytes increase their levels in several human diseases such as atherosclerosis, rheumatoid arthritis and Crohn's disease (26). On the other hand, non-classical monocytes may have a patrolling role in vessel walls, infiltrating tissues following the interaction between CXCR1 and CCL3 (38). This subset can also secrete inflammatory cytokines such as $TNF-\alpha$ and $IL-1\beta$ upon inflammatory

stimulation (38). In our study the characterization of both types of monocytes displayed significant differences in the levels of non-classical/classical monocytes during NAC (Figures 2E,F). These differences peaked in the 6th NAC cycle, coinciding with the first measured point for the PLX drug suggesting both drugs could modulate the response of these cells. Although, we fail searching similar studies performed in human monocytes that explain this result, we found an *in vitro* study performed in murine dendritic cells (mDCs) treated with no-toxic doses of chemotherapeutics (39). Here it was shown that DOX and PLX enhance the antigen processing machinery and induced higher expression of surface maturation markers in DCs, suggesting an immunogenic phenotype. Also, these cells secreted higher levels

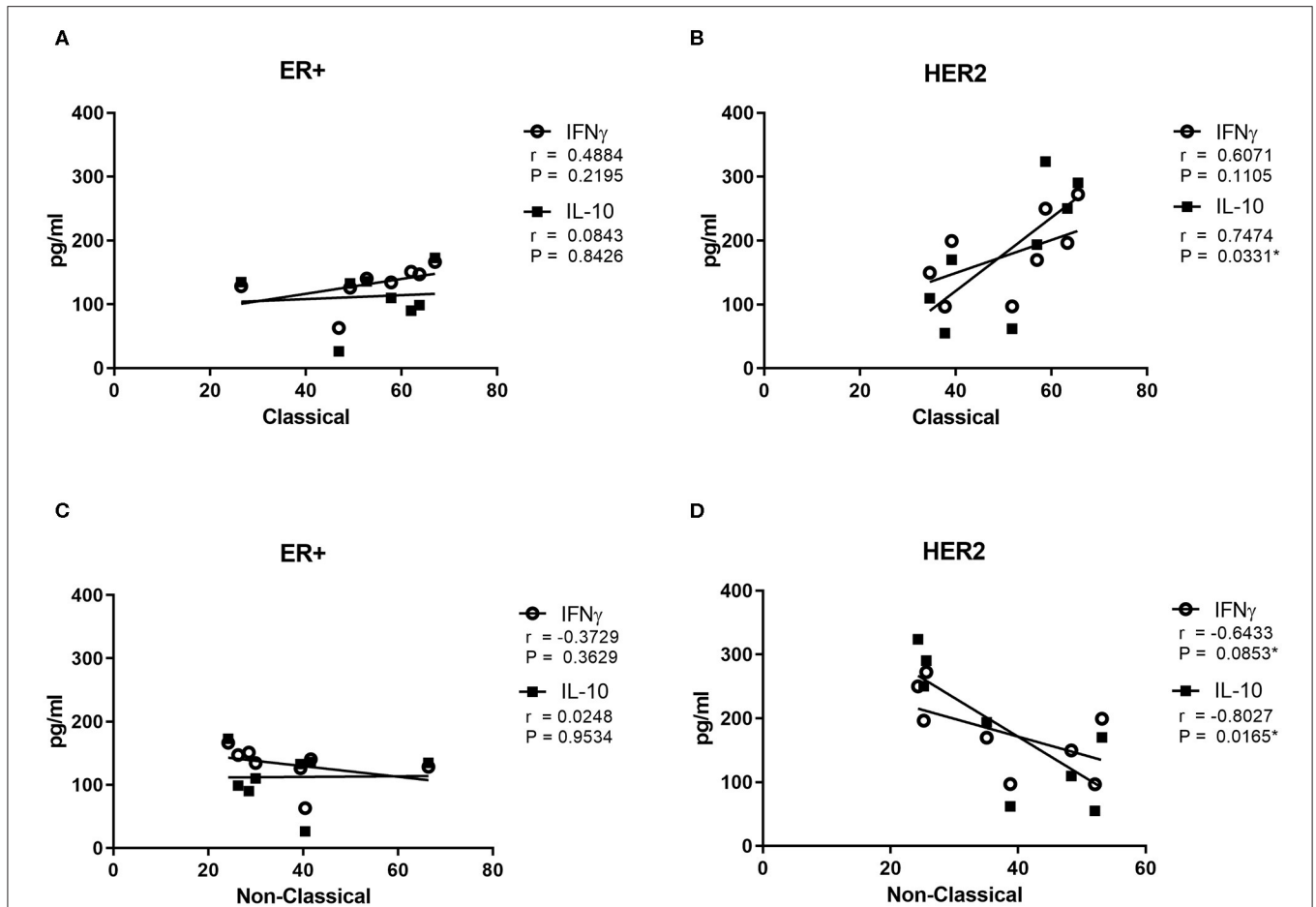


FIGURE 5 | Classical and Non-Classical Monocytes correlation between cytokines levels and breast cancer subtype. Cytokines levels in plasma were measured in the blood samples of patient with breast cancer previously extracted ($n = 20$). The results were grouped by kind of BC and monocytes subset. In squares are displayed the IL-10 levels and in circles the IFN γ levels. Cytokines levels are presented against the media percentage of each monocyte's subset. The classical monocytes data is divided in ER+ and HER2+ BC and it is exhibited in (A,B), respectively. The same distribution for non-classical monocytes is shown in (C,D). The Spearman analysis was used to study the relationships among BC types, cytokines levels and monocytes subsets. The differences were considered significant when $p < 0.05$.

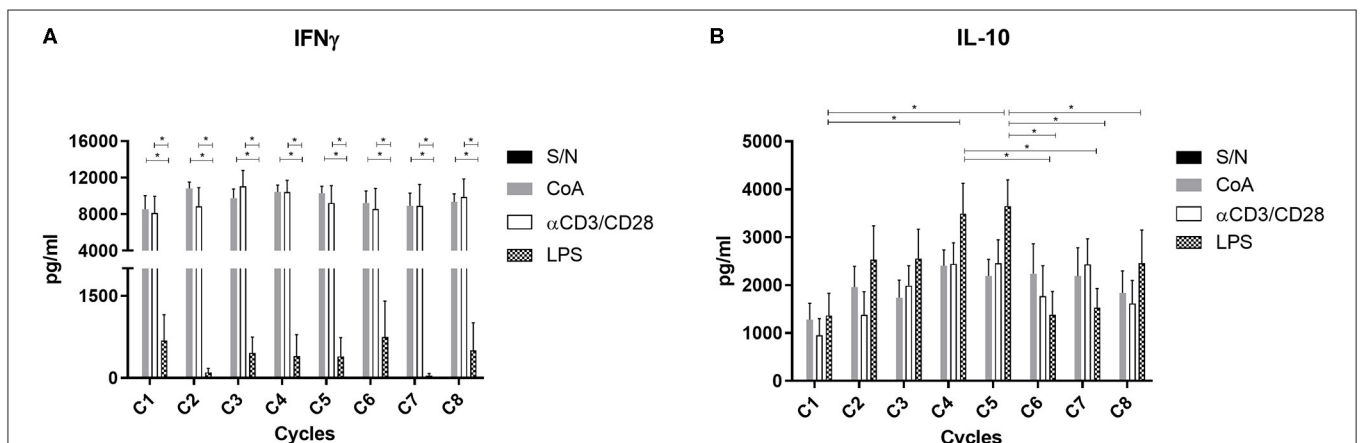


FIGURE 6 | Stimulation assay and cytokine levels across the NAC. The PBMC previously extracted from blood samples in BC patients were stimulated with ConA (2.5 $\mu\text{g/ml}$), $\alpha\text{CD3/CD28}$ (5 $\mu\text{g/ml}$), LPS (0.5 $\mu\text{g/ml}$) or without stimulus for 48 h in a CO_2 incubator at 37°C. After incubation IFN- γ (A) and IL-10 (B) levels were evaluated by ELISA. Two-way ANOVA test and $*p < 0.05$.

TABLE 2 | Plasma cytokine levels vs. complete pathologic response.

Plasma cytokines	Biopsies 8th cycle results	Low production 0–100 pg/ml	High production > 100 pg/ml	Fisher's test ($\alpha = 0.05$)	
				P-value	Relative risk
IL-10	Total response	4	2	0.1357	3 (0.7799–11.540)
	Partial response	2	7		
IFN γ	Total response	3	2	0.3287	2 (0.6102–6.555)
	Partial response	3	7		

Low and high levels of cytokine production were determined by the basal levels observed before cycle 1.

TABLE 3 | Monocytes subsets levels against the complete pathologic response.

Monocytes subsets	Biopsies 8th cycle results	Low percentage 0–40	High percentage > 40	χ^2 test ($\alpha = 0.05$)	
				P-value	χ^2 value
Classical	Total response	3	3	0.2690	2.626
	Partial response	1	7		
	No response	1	4		
Non-Classical	Total response	2	4	0.5174	1.318
	Partial response	5	3		
	No response	3	2		

Low and high percentage of monocytes were determined by the basal levels observed before cycle 1.

of IL-12 in contrast to control (39). Other studies performed in human DCs derived from monocytes, showed that both DOX and PLX increased the levels of MHC-II and CD80 surface expression (40, 41). These studies indicate that both drugs can modulate the function of myeloid cells, however the specific mechanism in different subsets of monocytes must be explored in further studies.

We observed increased levels in the IFN γ and IL-10 secretion in DOX treatment of NAC (Figure 2), but only IL-10 showed a statistically significant difference between some cycles (Figure 2C). The PLX treatment showed stable levels of both cytokines in plasma. Those cytokines are described with contrary effects in the tumor carcinogenesis (15). The first one, IFN γ , is associated with an anti-tumor response and is an inflammatory marker in the elimination of the tumor (42). On the other hand, IL-10 has been classically associated with an immunosuppressive microenvironment and may promote tumor development and progression (24). Unfortunately, our results in plasma did not clarify an unbalance for both cytokines and they may be are not directly related with the effect of the CT in BC patient.

In order to establish a potential relationship between plasma cytokines and monocyte subsets we performed a Spearman correlation analysis. Our data also was analyzed by BC subtypes. Unfortunately, we did not find a significant correlation between ER+ BC and classical (Figure 5A) or non-classical monocytes (Figure 5C) monocytes. The highest percentage of classical monocytes was correlated with the highest IL-10 levels in HER2-enriched BC (Figure 5B). Previous reports demonstrate that classical monocytes may secrete IL-10 (43). In contrast, plasma IL-10 levels were lower when the percentage

of non-classical monocytes decreased in HER2-enriched BC (Figure 5D). Although we could not perform intracellular IL-10 stain to decipher whether monocytes were the source of these cytokine; we performed *in vitro* stimulation with LPS which stimulates principally to monocytes (Figure 6) and dendritic cells (27). This result displayed that only cells stimulated with LPS induced significant high levels of IL-10 comparing first cycles of NAC to 5th cycle. This result is also in agreement with the time-lapse of monocytes increasing displayed in Figures 2E,F. On the other hand, it is highly described that various myeloid cells of the immune system are capable of secreting IL-10 such as DCs, macrophages and even neutrophils (44). An additional study demonstrated that plasmacytoid dendritic cells located in draining lymph nodes are an important source of cytokines in BC (45). They associated increased levels of IL-12 and IFN γ produced by PCD, with good prognostic, and IL-4 and IL-10 with poor prognostic. Therefore, our data suggest a relationship between classical monocytes and plasma IL-10 in HER2-enriched BC patients with PLX mediated the abundance of the monocytes' subsets.

Previous reports have described that PLX may induce maturation of mouse macrophages and dendritic cells via TLR4, mimicking the effects of LPS (46). We speculate that DOX induces differentiation of classical monocytes in HER2-enriched BC. These cells may secrete IL-10 (26). The second part of NAC with PLX may change the breast microenvironment triggering differentiation of classical monocytes into non-classical, macrophages and dendritic cells by mimicking the LPS effect (46). The reason why we did not see a similar IL-10 levels and monocytes relation in ER+ BC even with the same PLX

effect (Figures 4A, 5A) may suggest that severity of the cancer and progesterone and ER play a role in plasma IL-10 levels, but this information is not elucidated in this study (47).

Higher IL-10 plasma levels were associated to poorer NAC outcomes (Table 2). Also, the percentage of classical monocytes was the highest in a patient with partial responses (Table 3). Despite this, when we compared immune markers vs. pCR differences did not reach statistical significance. Our conclusions are limited by the heterogeneity, the size of our sample and absence of a molecular definition for BC subtypes. However, our results show a trend that could guide future studies. Therefore, our findings should be further confirmed in larger studies increasing the number of patients and selecting only HER2-enriched tumors in order to perform more specific measurements of IL-10 secretion and classical monocytes, to demonstrate a consistent relationship.

CONCLUSION

Our results suggest that peripheral blood monocyte subsets and plasma IL-10 levels in BC patients under NAC may serve as useful indicators to guide BC treatments in the future.

DATA AVAILABILITY STATEMENT

The datasets generated for this study are available on request to the corresponding author.

ETHICS STATEMENT

This study was approved by the Scientific Ethics committee of our institution (CEC-MEDUC); project 16-312 and

follows the principles outlined by the Helsinki Declaration. The patients/participants provided their written informed consent to participate in this study.

AUTHOR CONTRIBUTIONS

AP-S designed the experiments and collected the clinical data with SM. JV-F and NM-D designed and performed the experiments and analyzed the obtained data. SM supported with the collection of the patient's samples and the logistics. IC-A design and performed the pCR statistics analyzes. JV-F lead the wrote of the manuscript with the support of all the authors. SB, JS, and FA helped to write and edit the manuscript. AK and CS gave direction and provided financial support. All authors contributed to the article and approved the submitted version.

FUNDING

This study supported by the Fondo de Investigación Científica y tecnológica (FONDECYT Nos. 11161103 and 3190590), Chilean Government grants Nos. 1150862, 11161103, and 1190830, as well as the Millennium Institute Immunology and Immunotherapy P09/016-F. AK is a Helen C. Levitt Visiting Professor at the Department of Microbiology and Immunology of the University of Iowa.

SUPPLEMENTARY MATERIAL

The Supplementary Material for this article can be found online at: <https://www.frontiersin.org/articles/10.3389/fimmu.2020.01413/full#supplementary-material>

REFERENCES

- Bray F, Ferlay J, Soerjomataram I, Siegel RL, Torre LA, Jemal A. Global cancer statistics 2018: GLOBOCAN estimates of incidence and mortality worldwide for 36 cancers in 185 countries. *CA Cancer J. Clin.* (2018) 68:394–424. doi: 10.3322/caac.21492
- Acevedo SCF, Camus M, Vial C, Panay S, Abarca M, Dominguez F. Predictive value of conventional immuno- histochemical biomarkers in breast cancer. *Rev Med Chile.* (2015) 2:724–32. doi: 10.4067/S0034-98872015000600005
- Liu M, Guo F. Recent updates on cancer immunotherapy. *Precis Clin Med.* (2018) 1:65–74. doi: 10.1093/pcmedi/pby011
- Schmid P, Adams S, Rugo HS, Schneeweiss A, Barrios CH, Iwata HT, et al. Atezolizumab and Nab-paclitaxel in advanced triple-negative breast cancer. *N Engl J Med.* (2018) NEJMoa1809615. doi: 10.1056/NEJMoa1809615
- Schmid P, Cortes J, Pusztai L, McArthur H, Kümmel S, Bergh J, et al. Pembrolizumab for early triple-negative breast cancer. *N Engl J Med.* (2020) 382:810–21. doi: 10.1056/NEJMoa1910549
- Grivennikov SI, Greten FR, Karin M. Immunity, inflammation, and cancer. *Cell.* (2010) 140:883–99. doi: 10.1016/j.cell.2010.01.025
- Ohnishi S, Ma N, Thanan R, Pinlaor S, Hammam O, Murata M, et al. DNA damage in inflammation-related carcinogenesis and cancer stem cells. *Oxid Med Cell Longev.* (2013) 2013:387014. doi: 10.1155/2013/387014
- Larsen SK, Gao Y, Basse PH. NK cells in the tumor microenvironment. *Crit Rev Oncog.* (2014) 19:91–105. doi: 10.1615/CritRevOncog.2014011142
- Fernández L, Metais JY, Escudero A, Vela M, Valentín J, Vallcorba I, et al. Memory T cells expressing an NKG2D-CAR efficiently target osteosarcoma cells. *Clin. Cancer Res.* (2017) 23:5824–35. doi: 10.1158/1078-0432.CCR-17-0075
- Mimica X, Acevedo F, Oddo D, Ibanez C, Medina L, Kalergis A, et al. Neutrophil/lymphocyte ratio in complete blood count as a mortality predictor in breast cancer. *Rev Med Chil.* (2016) 144:691–6. doi: 10.4067/S0034-98872016000600001
- Bergenzel C, Roxà A, Mehmeti M, Leandersson K, Larsson AM. Clinical relevance of systemic monocytic-MDSCs in patients with metastatic breast cancer. *Cancer Immunol. Immunother.* (2020) 69:435–48. doi: 10.1007/s00262-019-02472-z
- Wesolowski R, Duggan MC, Stiff A, Markowitz J, Trikha P, Levine KM, et al. Circulating myeloid-derived suppressor cells increase in patients undergoing neo-adjuvant chemotherapy for breast cancer. *Cancer Immunol. Immunother.* (2017) 66:1437–47. doi: 10.1007/s00262-017-2038-3
- Shree T, Olson OC, Elie BT, Kester JC, Garfall AL, Simpson K, et al. Macrophages and cathepsin proteases blunt chemotherapeutic response in breast cancer. *Genes Dev.* (2011) 25:2465–79. doi: 10.1101/gad.180331.111
- Vesely MD, Kershaw MH, Schreiber RD, Smyth MJ. Natural innate and adaptive immunity to cancer. *Annu Rev Immunol.* (2011) 29:235–71. doi: 10.1146/annurev-immunol-031210-101324
- Mittal D, Gubin MM, Schreiber RD, Smyth MJ. New insights into cancer immunoediting and its three component phases- elimination, equilibrium and escape. *Curr Opin Immunol.* (2015) 27:16–25. doi: 10.1016/j.coi.2014.01.004
- Mittal SK, Cho KJ, Ishido S, Roche PA. Interleukin 10 (IL-10)-mediated Immunosuppression March-i induction regulates antigen presentation by

- macrophages but not Dendritic cells. *J Biol Chem.* (2015) 290:27158–67. doi: 10.1074/jbc.M115.682708
17. Bhattacharjee HK, Bansal VK, Nepal B, Srivastava S, Dinda AK, Misra MC. Is Interleukin 10 (IL10) expression in breast cancer a marker of poor prognosis?. *Indian J Surg Oncol.* (2016) 7:320–5. doi: 10.1007/s13193-016-0512-6
 18. Prat A, Pineda E, Adamo B, Galván P, Fernández A, Gaba L, et al. Clinical implications of the intrinsic molecular subtypes of breast cancer. *Breast.* (2015) 24:S26–35. doi: 10.1016/j.breast.2015.07.008
 19. Icaza G, Núñez L, Buguéño H. Descripción epidemiológica de la mortalidad por cáncer de mama en mujeres en Chile. *Rev Med Chil.* (2017) 145:106–14. doi: 10.4067/S0034-98872017000100014
 20. Sánchez C, Acevedo F, Petric M, Galindo H, Domínguez F, León A, et al. Cáncer de mama metastásico. Caracterización de una cohorte según subtipos. *Rev Med Chil.* (2014) 142:428–35. doi: 10.4067/S0034-98872014000400003
 21. Vaz-Luis I, Ottesen RA, Hughes ME, Marcom PK, Moy B, Rugo HS, et al. Impact of hormone receptor status on patterns of recurrence and clinical outcomes among patients with human epidermal growth factor-2-positive breast cancer in the National Comprehensive Cancer Network: a prospective cohort study. *Breast Cancer Res.* (2012) 14:1–14. doi: 10.1186/bcr3324
 22. Yoshino Y, Taguchi A, Takao M, Kashiyama T, Furusawa A, Uno M, et al. Lymphopenia after induction chemotherapy correlates with incomplete surgical resection in patients with advanced ovarian cancer. *Int J Clin Oncol.* (2019) 24:428–36. doi: 10.1007/s10147-018-1374-4
 23. Ma RM, Chen CZ, Zhang W, You J, Huang DP, Guo GL. Prognostic value of chemotherapy-induced neutropenia at the first cycle in invasive breast cancer. *Medicine.* (2016) 95:e3240. doi: 10.1097/MD.0000000000003240
 24. Messerschmidt JL, Prendergast GC, Messerschmidt GL. How cancers escape immune destruction and mechanisms of action for the new significantly active immune therapies: helping nonimmunologists decipher recent advances. *Oncologist.* (2016) 21:233–43. doi: 10.1634/theoncologist.2015-0282
 25. Ziegler-Heitbrock L, Ancuta P, Crowe S, Dalod M, Grau V, Hart DN, et al. Nomenclature of monocytes and dendritic cells in blood. *Nomenclature of monocytes and dendritic cells in blood.* (2014) 116:5–7. doi: 10.1182/blood-2010-02-258558
 26. Yang J, Zhang L, Yu C, Yang XF, Wang H. Monocyte and macrophage differentiation: circulation inflammatory monocyte as biomarker for inflammatory diseases. *Biomark Res.* (2014) 2:1–9. doi: 10.1186/2050-7771-2-1
 27. Kelly B, O'Neill LAJ. Metabolic reprogramming in macrophages and dendritic cells in innate immunity. *Cell Res.* (2015) 25:771–84. doi: 10.1038/cr.2015.68
 28. Olsen Saraiva Camara N, Lepique AP, Basso AS. Lymphocyte differentiation and effector functions. *Clin Dev Immunol.* (2012) 2012:510603. doi: 10.1155/2012/510603
 29. de La Cruz-Merino L, Chiesa M, Caballero R, Rojo F, Palazón N, Carrasco FH, et al. Breast cancer immunology and immunotherapy: current status and future perspectives. *Int Rev Cell Mol Biol.* (2017) 331:1–53. doi: 10.1016/bs.ircmb.2016.09.008
 30. Hanahan D, Weinberg RA. Hallmarks of cancer: the next generation. *Cell.* (2011) 144:646–74. doi: 10.1016/j.cell.2011.02.013
 31. Chen L, Kong X, Yan C, Fang Y, Wang J. The research progress on the prognostic value of the common hematological parameters in peripheral venous blood in breast cancer. *Onco Targets Ther.* (2020) 13:1397–412. doi: 10.2147/OTT.S227171
 32. Cho U, Park HS, Im SY, Yoo CY, Jung JH, Suh YJ, et al. Prognostic value of systemic inflammatory markers and development of a nomogram in breast cancer. *PLoS ONE.* (2018) 13:1–20. doi: 10.1371/journal.pone.0200936
 33. Melichar B, Tousková M, Dvorák J, Jandík P, Kopecký O. The peripheral blood leukocyte phenotype in patients with breast cancer: effect of doxorubicin/paclitaxel combination chemotherapy. *Immunopharmacol Immunotoxicol.* (2001) 23:163–73. doi: 10.1081/IPH-100103857
 34. Hernandez CM, Madrona AP, Vazquez PG, Fernández PG, Merino GR, Romero JA, et al. Usefulness of lymphocyte-to-monocyte, neutrophil-to-monocyte and neutrophil-to-lymphocyte ratios as prognostic markers in breast cancer patients treated with neoadjuvant chemotherapy. *Clin Transl Oncol.* (2018) 20:476–83. doi: 10.1007/s12094-017-1732-0
 35. Goto W, Kashiwagi S, Asano Y, Takada K, Takahashi K, Hatano T, et al. Predictive value of lymphocyte-to-monocyte ratio in the preoperative setting for progression of patients with breast cancer. *BMC Cancer.* (2018) 18:1–9. doi: 10.1186/s12885-018-5051-9
 36. Jin Hu R, Liu Q, Ying Ma J, Zhou J, Liu G. Preoperative lymphocyte-to-monocyte ratio predicts breast cancer outcome: a meta-analysis. *Clin Chim Acta.* (2018) 484:1–6. doi: 10.1016/j.cca.2018.05.031
 37. Ritz BW, Alexander GM, Nogusa S, Perreault MJ, Peterlin BL, Grothusen JR, et al. Elevated blood levels of inflammatory monocytes (CD14+CD16+) in patients with complex regional pain syndrome. *Clin Exp Immunol.* (2011) 164:108–17. doi: 10.1111/j.1365-2249.2010.04308.x
 38. Cros J, Cagnard N, Woollard K, Patey N, Zhang SY, Senechal B, et al. Human CD14dimmonocytes patrol and sense nucleic acids and viruses via TLR7 and TLR8 receptors. *Immunity.* (2010) 33:375–86. doi: 10.1016/j.immuni.2010.08.012
 39. Shurin GV, Tourkova IL, Kaneno R, Shurin MR. Chemotherapeutic agents in nontoxic concentrations increase antigen presentation by dendritic cells via an IL-12-dependent mechanism. *J Immunol.* (2009) 183:137–44. doi: 10.4049/jimmunol.0900734
 40. John J, Ismail M, Riley C, Askham J, Morgan R, Melcher A, et al. Differential effects of Paclitaxel on dendritic cell function. *BMC Immunol.* (2010) 11:14. doi: 10.1186/1471-2172-11-14
 41. Hu J, Kinn J, Zirakzadeh AA, Sherif A, Norstedt G, Wikström AC, et al. The effects of chemotherapeutic drugs on human monocyte-derived dendritic cell differentiation and antigen presentation. *Clin Exp Immunol.* (2013) 172:490–9. doi: 10.1111/cei.12060
 42. O'Sullivan T, Saddawi-Konefka R, Vermi W, Koebel CM, Arthur C, White JM, et al. Cancer immunoeediting by the innate immune system in the absence of adaptive immunity. *J Exp Med.* (2012) 209:1869–82. doi: 10.1084/jem.20112738
 43. Shantsila E, Wrigley B, Tapp L, Apostolakis S, Montoro-Garcia S, Drayson MT, et al. Immunophenotypic characterization of human monocyte subsets: possible implications for cardiovascular disease pathophysiology. *J Thromb Haemost.* (2011) 9:1056–66. doi: 10.1111/j.1538-7836.2011.04244.x
 44. Saraiva M, O'Garra A. The regulation of IL-10 production by immune cells. *Nat Rev Immunol.* (2010) 10:170–81. doi: 10.1038/nri2711
 45. Cox K, North M, Burke M, Singhal H, Renton S, Aqel N, et al. Plasmacytoid dendritic cells (PDC) are the major DC subset innately producing cytokines in human lymph nodes. *J Leukoc Biol.* (2005) 78:1142–52. doi: 10.1189/jlb.1103532
 46. Pfannenstiel LW, LAM SS, Emens LA, Jaffe EM, and Armstrong TD. Paclitaxel enhances early dendritic cell maturation and function through TLR4 signaling in mice. *Cell Immunol.* (2010) 263:79–87. doi: 10.1016/j.cellimm.2010.03.001
 47. Hamidullah B, Changkija B, Konwar R. Role of interleukin-10 in breast cancer. *Breast Cancer Res Treat.* (2012) 133:11–21. doi: 10.1007/s10549-011-1855-x

Conflict of Interest: The authors declare that the research was conducted in the absence of any commercial or financial relationships that could be construed as a potential conflict of interest.

Copyright © 2020 Valdés-Ferrada, Muñoz-Durango, Pérez-Sepulveda, Muñiz, Coronado-Arrázola, Acevedo, Soto, Bueno, Sánchez and Kalergis. This is an open-access article distributed under the terms of the Creative Commons Attribution License (CC BY). The use, distribution or reproduction in other forums is permitted, provided the original author(s) and the copyright owner(s) are credited and that the original publication in this journal is cited, in accordance with accepted academic practice. No use, distribution or reproduction is permitted which does not comply with these terms.