



Interferon Alpha Favors Macrophage Infection by Visceral *Leishmania* Species Through Upregulation of Sialoadhesin Expression

Lieselotte Van Bockstal, Dimitri Bulté, Magali Van den Kerkhof, Laura Dirckx, Dorien Mabilie, Sarah Hendrickx, Peter Delputte, Louis Maes and Guy Caljon*

Laboratory of Microbiology, Parasitology and Hygiene (LMPH), Faculty of Pharmaceutical, Biomedical and Veterinary Sciences, University of Antwerp, Wilrijk, Belgium

OPEN ACCESS

Edited by:

Malcolm Scott Duthie,
HDT Biotech Corporation,
United States

Reviewed by:

Fabienne Tacchini-Cottier,
Université de Lausanne, Switzerland
Prashant Khare,
All India Institute of Medical Sciences
Bhopal, India

*Correspondence:

Guy Caljon
guy.caljon@uantwerpen.be

Specialty section:

This article was submitted to
Microbial Immunology,
a section of the journal
Frontiers in Immunology

Received: 08 November 2019

Accepted: 07 May 2020

Published: 09 June 2020

Citation:

Van Bockstal L, Bulté D, Van den Kerkhof M, Dirckx L, Mabilie D, Hendrickx S, Delputte P, Maes L and Caljon G (2020) Interferon Alpha Favors Macrophage Infection by Visceral *Leishmania* Species Through Upregulation of Sialoadhesin Expression. *Front. Immunol.* 11:1113. doi: 10.3389/fimmu.2020.01113

Type I interferons (IFNs) induced by an endogenous *Leishmania* RNA virus or exogenous viral infections have been shown to exacerbate infections with New World Cutaneous *Leishmania* parasites, however, the impact of type I IFNs in visceral *Leishmania* infections and implicated mechanisms remain to be unraveled. This study assessed the impact of type I IFN on macrophage infection with *L. infantum* and *L. donovani* and the implication of sialoadhesin (Siglec-1/CD169, Sn) as an IFN-inducible surface receptor. Stimulation of bone marrow-derived macrophages with type I IFN (IFN- α) significantly enhanced susceptibility to infection of reference laboratory strains and a set of recent clinical isolates. IFN- α particularly enhanced promastigote uptake. Enhanced macrophage susceptibility was linked to upregulated Sn surface expression as a major contributing factor to the infection exacerbating effect of IFN- α . Stimulation experiments in Sn-deficient macrophages, macrophage pretreatment with a monoclonal anti-Sn antibody or a novel bivalent anti-Sn nanobody and blocking of parasites with soluble Sn restored normal susceptibility levels. Infection of Sn-deficient mice with bioluminescent *L. infantum* promastigotes revealed a moderate, strain-dependent role for Sn during visceral infection under the used experimental conditions. These data indicate that IFN-responsive Sn expression can enhance the susceptibility of macrophages to infection with visceral *Leishmania* promastigotes and that targeting of Sn may have some protective effects in early infection.

Keywords: *Leishmania*, sialoadhesin, CD169, macrophages, IFN- α , type I IFN

INTRODUCTION

Leishmaniasis is a family of related protozoal diseases occurring in the New- and Old World and is caused by *Leishmania* parasites responsible for clinical features ranging from cutaneous, mucocutaneous to visceral manifestations. Visceral leishmaniasis (VL), also known as kala-azar, is a lethal neglected tropical disease caused by *Leishmania donovani* and *L. infantum* and responsible for ~0.2–0.4 million cases each year (1). It is a vector-borne disease transmitted by the bites of infected female phlebotomine sand flies (2). In the vertebrate host, entry and survival inside myeloid cells are essential factors to complete its life cycle (3) and to enable dissemination to internal organs such as the liver, spleen and bone marrow (4).

Recent reports on New World cutaneous *L. guyanensis* infections revealed a considerable impact of exogenous IFN-inducing viruses and an endogenous *Leishmania* dsRNA virus (LRV1) on primary infection and reactivation in mice (5). LRV1 presence in clinical isolates of *L. braziliensis* has been associated to increased risk of treatment failure (6). LRV-sequences were also detected in an Iranian *L. infantum* clinical isolate from a patient unresponsive to antimonial treatment (7). Viral co-infections and presence of *Leishmania* RNA virus are therefore increasingly perceived as risk factors for pathogenicity of human leishmaniasis (5, 7–9). The virus appears to use the *Leishmania* exosomal pathway to reach the extracellular environment (10). The exacerbating features of LRV1 in *L. guyanensis* were linked to the induction of type I interferons which primarily occurred through stimulation of the endosomal Toll-Like Receptor 3 (TLR3) pathway by viral dsRNA in mice (11, 12). Type I IFN is known to trigger the expression of various so-called interferon-stimulated genes (ISGs) (13), including some that are involved in viral recognition and entry. Sialoadhesin (Sn, CD169, Siglec-1) is an ISG-gene product (14–17) expressed on macrophages, belonging to the Siglec (sialic acid binding Ig-lectin) family (18). Human and mice Sn share 72% sequence homology (19, 20) and, unlike other Siglecs, seem to lack tyrosine-based signaling motifs which suggests a primary role in cell-cell interactions rather than in cell signaling (21). During HIV-infection, Sn expression levels have been correlated with type I IFN levels and inflammatory disease progression *in vivo* in macaques (16). Regarding HIV-1, Pino et al. showed that IFN- α activated macrophages have an enhanced ability to capture HIV-1 via Sn recognition. These macrophages could fuel novel CD4⁺ T cell infections and contribute to HIV-1 dissemination (22). Recent reports described that Sn recognizes the sialic acid moieties onto the *Leishmania* surface (3, 23, 24) and is responsible for phagocytosis during a *Leishmania* infection (3). Other pathogens such as *Campylobacter jejuni* (25), group B *Streptococcus* (26) and *Trypanosoma cruzi* (27) were also shown to be phagocytosed by macrophages using the Sn-sialic acid interaction. Sn becomes highly upregulated under conditions of IFN- α stimulation, for example, during viral or bacterial infections *in vitro* and *in vivo* (14, 16, 17). As such, co-infections and/or IFN- α stimulation may have an impact on the course and pathogenicity of a *Leishmania* infection (5).

The present study evaluated the role of type I IFN in the infection outcome of different *L. infantum* and *L. donovani* strains. IFN- α stimulated macrophages showed higher infection levels compared to control-treated macrophages. Since Sn expression was described to be upregulated by type I IFN, we further unraveled the role of Sn during *in vitro* and *in vivo* *Leishmania* infections.

MATERIALS AND METHODS

Ethics

The use of laboratory rodents was carried out in accordance to all mandatory guidelines (EU directives, including the Revised Directive 2010/63/EU on the Protection of Animals used for Scientific Purposes that came into force on 01/01/2013, and the

TABLE 1 | Overview of *Leishmania* isolates used and their respective origin.

Strain	Code	Origin
<i>L. infantum</i>		
ITMAP263	MHOM/MA/67/ITMAP263	Reference lab strain, originally isolated from VL-patient in Morocco
LEM3323	MHOM/FR/96/LEM3323	French field isolate from HIV-patient
LEM5159	MHOM/FR/2006/LEM5159	French field isolate from HIV-patient
LLM2346	MHOM/ES/2016/LLM-2346	Spanish field isolate
<i>L. donovani</i>		
Ldl82	MHOM/ET/67/L82	Reference lab strain, originally isolated from VL-patient in Ethiopia
LLM1599	MHOM/ET/2007/LLM-1599	Ethiopian field isolate
LLM1600	MHOM/ET/2007/LLM-1600	Ethiopian field isolate
<i>L. major</i>		
JISH118	MHOM/SA/85/JISH118	Saudi Arabian field isolate

declaration of Helsinki in its latest version) and was approved by the ethical committee of the University of Antwerp, Belgium (UA-ECD 2014-17, UA-ECD 2017-04, UA-ECD 2015-90).

Animals

Female C57BL/6 and BALB/c mice (6–8 weeks old) were used for the collection of bone marrow cells and for the *in vivo* bioluminescent imaging experiments. Female golden hamsters (body weight 100–120 g) were used as donors for the collection of *Leishmania* amastigotes. Animals were purchased from Janvier (France) and kept in quarantine for at least 5 days before starting the experiment. Sn-deficient mice (Sn^{-/-} C57BL/6) were reared at our facilities from breeding pairs provided by UGent (Prof. Dr. Dirk Elewaut, Molecular Immunology and Inflammation Unit, VIB-UGent). Food for laboratory rodents and drinking water were available *ad libitum*.

Parasite Species/Strains

The different *L. infantum*, *L. donovani*, and *L. major* strains used in this paper for the *in vitro* infections are listed in **Table 1**. Promastigotes were routinely cultured in T25 culture flasks containing 5 mL of HOMEM medium (Invitrogen, UK) supplemented with 10% heat inactivated fetal bovine serum (iFBS). *Ex vivo* amastigotes of *L. infantum* ITMAP263 were obtained from the spleen of heavily infected donor hamsters and purified using two centrifugation steps as described elsewhere (28). The strains for the *in vivo* infections were the bioluminescent *L. infantum* MHOM/FR/96/LEM3323^{PpyRE9} and MHOM/MA/67/ITMAP263^{PpyRE9}, generated by the stable introduction of the red-shifted firefly luciferase PpyRE9 using the pLEXSY-hyg2.1 vector (29).

Purification of a Sn-Specific Bivalent Nanobody and Conventional Antibody

Anti-mouse Sn monoclonal antibodies (mAb) SySy94 were produced and purified as described previously (17). Anti-mouse Sn bivalent nanobody (Biv4.40 Nb, courtesy UGent) was produced in the periplasm of transformed *Escherichia coli*. The

bacterial expression clone was expanded in LB Broth medium containing 100 μ g/mL ampicillin, 2 mM MgCl₂ and 0.1% D-glucose at 37°C and 200 rpm in a New Brunswick incubator shaker. The induction of protein synthesis was carried out at OD₆₀₀ 0.6–0.9 by addition of 1 mM IPTG (isopropyl β -D-1-thiogalactopyranoside) and continued incubation at 28°C and 200 rpm. Bacterial pellets were collected by centrifugation (20 min at 4,400 \times g) at 16 h post-induction. Periplasmic protein extracts were obtained by osmotic shock. In brief, cells were resuspended in ice cold TES buffer (Tris-HCl 0.2 M, EDTA 0.5 mM, sucrose 0.5 M) and kept for 1 h at 4°C while shaking. Subsequently, TES/4 was added to the cells for 2 h at 4°C while shaking. MgCl₂ was added to a final concentration of 12 mM and the periplasmic extract was obtained by using the supernatant after two ultracentrifugation steps: first 30 min at 7,860 \times g and second 15 min at 18,050 \times g. The extract was $\frac{1}{2}$ diluted in binding buffer (20 mM sodiumphosphate, 0.5 M NaCl and 20 mM imidazole in miliQ) and was loaded onto a Histrap HP column using an Akta Prime plus (GE Healthcare Life Sciences). His-tagged Biv4.40 Nb was eluted using 20 mM sodiumphosphate, 0.5 M NaCl and 0.5 M imidazole. Next, a size exclusion chromatography was performed on a Superdex GF75 10–300 mm column in Gibco LPS-free cell culture grade PBS (ThermoFisher Scientific). Chromatography was performed at 0.5 mL/min with elution of Biv4.40 Nb (30 kDa) after \pm 22 min (**Supplementary Figure 1A**).

Quality Assessment of the Sn-Binding Capacity of the Bivalent Nanobody

The binding capacity of myc-tagged Biv4.40 to Sn was assessed by immunofluorescent staining. Biv4.40 was added to Sn-expressing CHO cells and non-transfected CHO cells that served as negative controls (30). Cells were seeded onto coverslips and incubated at 37°C for 24 h. Biv4.40 was added to the cells on ice for 60 min at 1 μ g/mL. Cells were fixed with 4% paraformaldehyde for 20 min at ambient temperature. After fixation, the secondary mouse-anti-myc antibody (R950-25, ThermoFisher Scientific) was added at 1 μ g/mL. After three wash steps with PBS, the chicken anti-mouse Alexa Fluor 488 (ThermoFisher Scientific, A21200) antibody was added to the cells. Nuclei were stained with DAPI (Sigma-Aldrich). Images were obtained using an Axio Observer inverted microscope (Zeiss) equipped with a Compact Light Source HXP 120C and with filter sets 49 and 10 for DAPI and Alexa Fluor 488 fluorophores, respectively. Images were processed using Image J software (**Supplementary Figures 1B,C**).

in vitro Infections in Bone Marrow-Derived Macrophages

Bone marrow cells from tibia and femur were collected from wildtype and Sn^{-/-} C57BL/6 and BALB/c mice as described previously (31). Red blood cell lysis was performed with ACK buffer for 3 min. Bone marrow cells were incubated in a petri-dish with 10 mL RPMI-1640 culture medium (Gibco[®], Life Technologies) enriched with 1% non-essential amino acids, 1% penicillin/streptomycin, 1% sodium pyruvate, 1% L-glutamine,

10% iFCS and 15% L929 cell line supernatant containing macrophage colony stimulating factor (M-CSF) for 6 days at 37°C and 5% CO₂ (17). On the fourth day of incubation, bone marrow-derived macrophages were either or not stimulated with 50 IU/mL (for assessing dose-dependency) or the standard dose of 5.0 \times 10² IU/mL IFN- α (PBL Assay Science, 12100) in a 10 mL petri dish. After incubation, cells were detached with PBS containing 2% 1.0 M HEPES and 1% 0.5 EDTA solution. Bone marrow cells were seeded in 96-well plates at 30,000 cells/well in 100 μ L. After 24 h of attachment, cells were infected with *L. infantum* metacyclic promastigotes (multiplicity of infection 5:1) or *ex vivo* amastigotes (multiplicity of infection 20:1) in 100 μ L RPMI-1640. In some experiments, extracellular parasites were maximally removed after 24 h of infection, using an established protocol by rinsing the cells 2 \times with PBS and incubating the cells with RPMI supplemented with 2% heat-inactivated horse serum, 1% penicillin/streptomycin and 1% L-glutamine (32). After various time points post-infection, infected macrophages were fixed with methanol and stained with Giemsa. For each condition, the intracellular parasite burden was quantified microscopically in at least 50 macrophages for determination of the infection index: $\frac{\# \text{ amastigotes counted}}{\text{total} \# \text{ macrophages counted}}$ (33).

Flow Cytometric Analysis of Sn Expression

Bone marrow cells from tibia and femur were collected and either or not subjected to IFN- α stimulation. Liver cells were collected following a 10-min transcatheter perfusion with Krebs-Henseleit solution at a flow rate of 100 mL/h. The gallbladder was removed. Livers were mechanically disrupted in 5 mL DMEM medium (Thermo Fisher) containing liver dissociation enzymes (Miltenyi Biotec) and the gentleMACS[™] Dissociator (Miltenyi Biotec). After a 30' enzymatic digestion at 37°C, the cell suspensions were passed through a 100 μ m filter. Cells were counted in a KOVA chamber[®] with trypan blue and resuspended to a concentration of 2.0 \times 10⁷ cells/mL. 50 μ L (1.0 \times 10⁶ cells) of the cell suspension was used for analysis. Cells were kept on ice for 15 minutes and incubated with an Fc-blocking antibody (2.4G2, courtesy Dr. Benoît Stijlemans, VUB, Brussels). Next, cells were stained for 20 minutes with anti-mouse CD169 (Sn)-APC (3D6.112, Biolegend[®]) and the KC panel was supplemented with CD45-APC-Cy7 (30-F11, eBioscience[™]), F4/80-PE-Cy7 (BM8, eBioscience[™]) and antibodies Tim4-PerCP (RMT4-54, eBioscience[™]). Viability 405/520 fixable dye (Miltenyi Biotec) was used for exclusion of dead cells. Flow cytometry was performed on a BD FACSCalibur[®] apparatus (for bone marrow cells) or MACSQUANT 10[®] apparatus (for KC) and data were analyzed using the FlowJo[®] software. The Kupffer cell (KC) gating strategy is presented in **Supplementary Figure 2**.

Evaluation of the Impact of Sn and Sialic Acids During *in vitro* Infections

The impact of the Sn-sialic acid interaction was assessed using various complementary approaches. *In vitro* infections were conducted in parallel as described above in bone marrow-derived macrophages from Sn-deficient mice. Alternatively, bone marrow-derived macrophages were pre-incubated with 10 μ g/mL SySy94 or Biv4.40 for 1 h prior to infection. To fully

exclude any role for LPS despite the precautions taken, cells were treated in one experiment with 25 $\mu\text{g}/\text{mL}$ of polymyxin B (81334, Sigma-Aldrich) prior to addition of the pharmacological inhibitors. Blocking of sialic acids on the surface of *Leishmania* parasites was performed by adding 5 $\mu\text{g}/\text{mL}$ soluble Sn (5610-SL, Bio-Techne, R&D Systems) to the parasites 1 h prior to infection.

***in vivo* Infections With VL Strains**

Wildtype and Sn-deficient mice were infected in the tail vein with 1.0×10^8 metacyclic promastigotes MHOM/FR/96/LEM3323^{PpyRE9} or MHOM/MA/67/ITMAP^{PpyRE9} in 100 μL RPMI. In some experiments, mice were stimulated subcutaneously (34) with 1,000 IU/g IFN- α 3 days prior to infection. In another experiment, mice were injected intraperitoneally with 4 $\mu\text{g}/\text{g}$ Poly(I:C) at 3 days prior to infection, on the day of infection and weekly after infection (35). Poly(I:C) (Sigma-Aldrich, P1530) was freshly dissolved at 800 $\mu\text{g}/\text{mL}$ in PBS and was first heated to 50°C for 5 min followed by cooling on ice to maximize annealing.

At different time points post-infection, mice were subjected to bioluminescent imaging in an IVIS[®] Spectrum *in vivo* Imaging System (PerkinElmer). Briefly, D-luciferin substrate (Promega, Benelux) was injected intraperitoneally (0.15 mg/g BW), followed by anesthesia for 3 min in an induction chamber with 2.5% isoflurane (IsoFlo[®], Zoetis). Upon induction, mice were imaged in the IVIS[®] chamber for 10 min. Images were analyzed using LivingImage v4.3.1 within regions of interest (ROI) corresponding with the liver (29).

Cytokine Response Analysis

Blood samples were collected via the tail vein using heparinized capillaries (75 μL per capillary). Two capillaries were collected per mice. The blood was centrifuged at 20,000 $\times g$ for 10 min. The supernatant was stored at -80°C until further analysis. A custom panel of cytokines (mouse, IFN- γ , IL-6, IL-10, TNF- α , and KC/GRO) Multispot Assay System kit from MSD[®] (Mesoscale diagnostics) was used for the multiplex ELISA analysis according to the manufacturer's instructions.

Statistical Analyses

Mann-Whitney U, Kruskal-Wallis and ANOVA statistical tests were performed in GraphPad Prism 7, considering $p < 0.05$ as statistically significant. Graphs were prepared in GraphPad Prism 7.

RESULTS

IFN- α Induces a Higher Susceptibility of Macrophages to Infection With Visceral *Leishmania* Species

We evaluated the infection of different *L. infantum* and *L. donovani* promastigote laboratory strains and clinical isolates in bone marrow-derived macrophages either or not subjected to stimulation with IFN- α . Although the focus of this study was on VL species, the cutaneous *L. major* JISH118 strain was also included. The infection indices were elevated when IFN- α was added to macrophages of BALB/c ($p = 0.0072$) and C57Bl/6

mice ($p = 0.0480$) (Figure 1A). Although some strains seem to benefit more from the IFN- α induced effects than others, recorded infection indices were consistently higher in stimulated macrophages of LEM3323 in both mice species (BALB/c $p = 0.0180$, C57Bl/6 $p = 0.0454$), resulting in the selection of this strain for the majority of the subsequent *in vitro* and *in vivo* infection experiments. *In vitro* effects on numbers of intracellular amastigotes were notable within 48 h (Figure 1B, $p < 0.05$). Interestingly, the increase in infection index was mainly due to the cumulative entry of extracellular parasites, rather than an accelerated replication of amastigotes (Figure 1B). Using the *L. infantum* ITMAP263 strain from which both promastigotes and hamster spleen-derived amastigotes were available, the impact of also the life cycle stage could be assessed. In contrast to the promastigote infections ($p = 0.0047$), no effect of IFN- α was observed on infections initiated with ITMAP263 amastigotes under the stated experimental conditions (Figure 1C). The effect of IFN- α was dose-dependent, with the infection index increasing with higher IFN- α concentrations (Figure 1D).

Upregulation of Sn Expression by IFN- α Enhances *Leishmania* Infection in Macrophages

To investigate the impact of IFN- α on Sn expression, a flow cytometric analysis was performed to detect Sn expression (Figure 2A). Incubation of bone marrow-derived macrophages for 2 days with IFN- α resulted in enhanced Sn expression (MFI = 95.6 ± 75.8) compared to the non-stimulated cells (MFI = 50.0 ± 29.8) and IFN- α stimulated Sn^{-/-} cells (MFI = 42.9 ± 21.2).

Since Sn was described to contribute to *Leishmania* entry and multiplication in macrophages (3), the effect of IFN- α stimulation on infection was evaluated in wildtype and Sn^{-/-} macrophages. While marked differences were observed in wildtype macrophages, infection indices did not significantly increase at 4 and 48 h post-infection ($p > 0.9999$) in stimulated bone marrow-derived macrophages originating from Sn^{-/-} mice (Figure 2B). Trends were already notable within 4 h of infection, indicating that IFN- α affects the early infection processes.

The contribution of Sn to the effect of IFN- α was assessed using two different pharmacological inhibitors, a monoclonal anti-Sn antibody (SySy94) and a bivalent nanobody (Biv4.40 Nb) that lacks an Fc antibody domain (Figures 2C,D). Our findings show that pre-treatment of macrophages with Sn-specific antibodies or nanobodies partially abrogates the IFN- α induced effects resulting in a lower infection index 48 h post-infection with the different VL strains (SySy94: $p = 0.0037$; Biv4.40: $p = 0.0053$). Some effects of IFN- α and the pharmacological inhibitors were also noted in Sn^{-/-} mice. Although precautions were taken to purify antibodies and nanobodies in LPS-free conditions, an additional experiment was performed to exclude an impact of LPS by including polymyxin B in the cell system. The same impact of the pharmacological inhibitors on the infection indices was observed in the presence of polymyxin B. To further confirm the role of the Sn-sialic acid interaction, an excess of soluble Sn was added to the parasites prior to infection in order to saturate the surface sialic acids

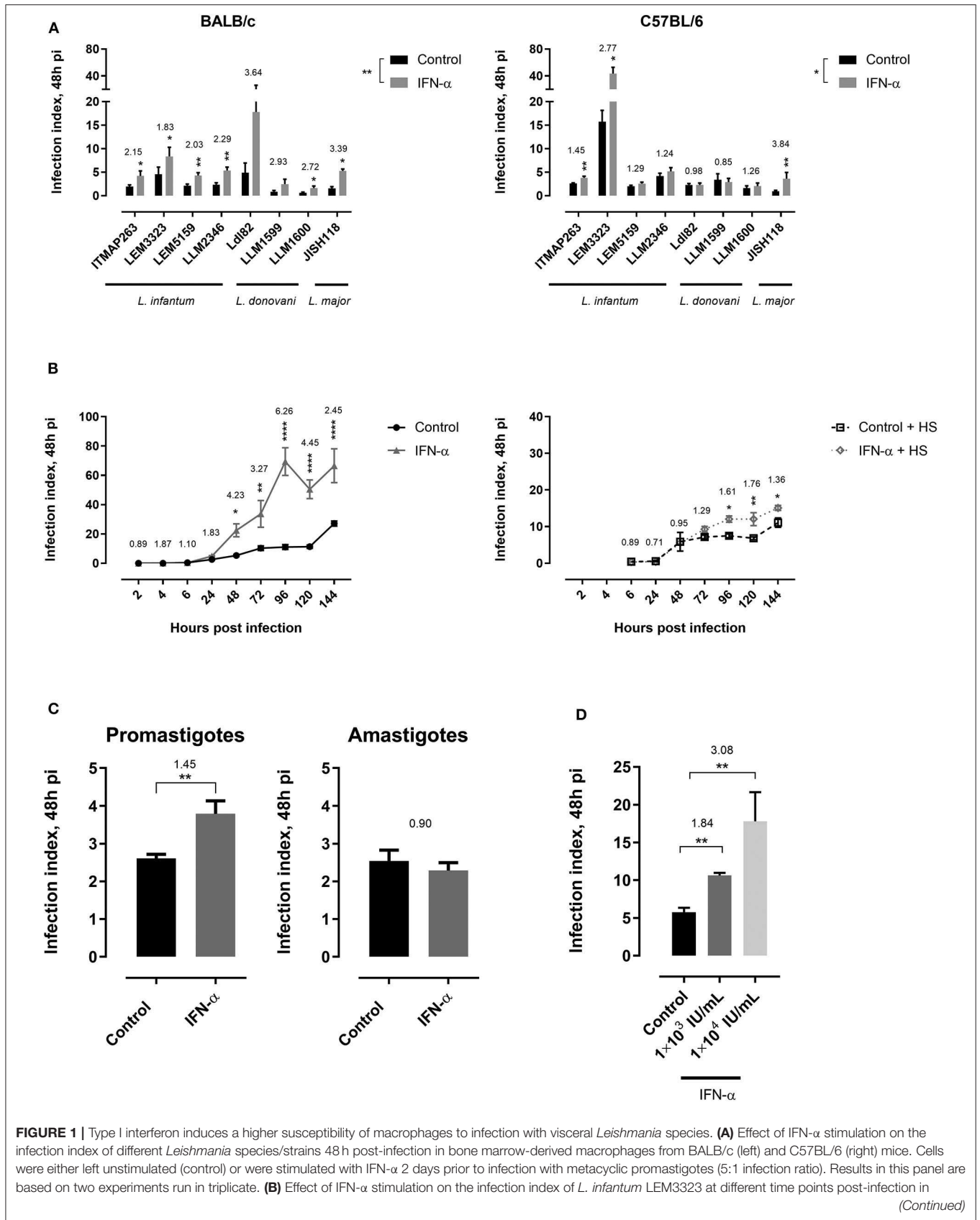


FIGURE 1 | bone marrow-derived macrophages from C57BL/6 mice. Cells were either left unstimulated (control) or were stimulated with IFN- α 2 days prior to infection with metacyclic promastigotes (5:1 infection ratio). Extracellular promastigotes were either washed (right panel) or not (left panel) with PBS 24 h after infection and cells were thereafter incubated with medium containing 2% horse serum (HS). Results in this panel are based on two experiments run in triplicate. **(C)** Infection index in bone marrow-derived cells of C57BL/6 mice either or not stimulated with IFN- α following infection with *L. infantum* ITMAP263 metacyclic promastigote or hamster spleen-derived amastigotes. Results in this panel are based on two experiments run in quadruplicate. **(D)** Effect of different doses of IFN- α stimulation on the infection index of LEM3323 48 h post-infection in bone-marrow derived macrophages from C57BL/6 mice. Results in this panel are based on two experiments run in triplicate. All results are expressed as mean \pm standard error of mean (SEM) and the ratio of IFN- α /control is stated above the bars (* $p < 0.05$; ** $p < 0.01$; **** $p < 0.0001$).

(Figure 2E). A lower infection index ($p = 0.0013$) was obtained in the IFN- α stimulated condition when parasites were pretreated with the soluble Sn compared to the non-treated parasites.

Sn Plays a Moderate Role During *in vivo* VL Infections

Infection of *L. infantum* LEM3323^{PPyRE9} showed higher relative luminescent units in the liver of wildtype as compared to Sn^{-/-} mice at 2 weeks post-infection ($p = 0.0454$) (Figures 3A,B) but was not associated with major changes in the serum cytokine levels (Supplementary Figure 3). Infection with *L. infantum* ITMAP263^{PPyRE9} in wildtype and Sn^{-/-} mice did not show significant differences in liver burdens (Supplementary Figure 4), matching the *in vitro* observations of strain-dependent effects. Additional experiments were performed to mimic an antiviral response by combining the infection with a subcutaneous IFN- α stimulation (Figure 3C) or an exposure to Poly(I:C) (Figure 3D). No significant enhancement of infection was observed in response to these experimental triggers. The impact of these triggers on *in vivo* Sn expression was monitored on KCs (Figure 3E). KCs were found to already express steady-state levels of Sn which are unaffected by the IFN- α stimulation protocol. Poly(I:C) triggers enhanced Sn-expression, but without significantly affecting hepatic parasite burdens (Figure 3D and Supplementary Figure 4C).

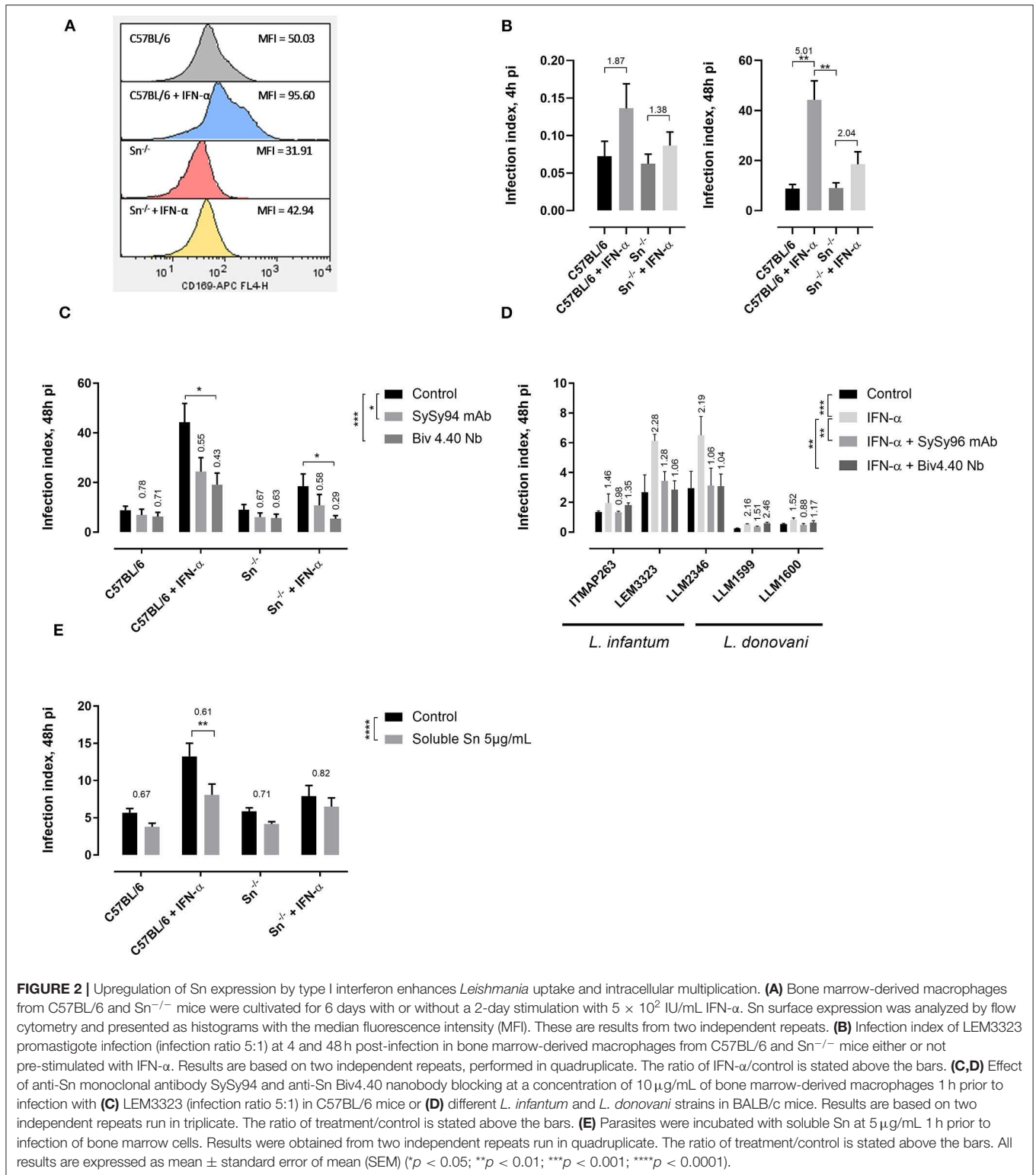
DISCUSSION

The present study provides evidence for an enhanced infection of *Leishmania* in macrophages that are stimulated with type I interferon. Following experimental triggering with IFN- α , bone marrow-derived macrophages become significantly more susceptible to infection by several laboratory and recent clinical VL strains, linked to enhanced promastigote entry. A putative role for type I IFNs that are typically induced during viral infection is in line with recent studies that document an interplay between leishmaniasis and viral infections. For instance, Ethiopian VL patients co-infected with HIV were found to suffer a higher risk of relapse (36). Adai and colleagues described a significant association between treatment failure and the presence of an endogenous LRV1 in *L. braziliensis* (6). Another study documented that LRV1 confers an advantage to *L. guyanensis* by promoting survival of infected macrophages through a TLR3/miR-155/Akt signaling pathway (37). These combined literature findings suggest that responses induced by HIV-1 or LRV1 can impact on *Leishmania* infection and efficacy of treatment (38).

Blood transcriptomics conducted in *L. infantum* infected individuals revealed activation of the type I interferon pathway (39), which is also observed in infected BALB/c mice (40). Available literature about the role of type I IFN during leishmaniasis seems to ascribe both protective and exacerbating roles. Protective roles of type I IFNs against *L. donovani* relate to interferon regulatory factor-7 (IRF-7) which plays a critical role in regulating amastigote killing (41). Low doses of IFN- β also conferred iNOS-dependent protection of BALB/c mice from progressive cutaneous and fatal visceral disease caused by low and high doses of *L. major* (42). In addition, the *in vivo* protective effects of CpG-oligodesoxynucleotides against *L. major* depend on IFN- α/β -receptor chain 1 (IFNAR1) signaling (43). *In vitro* exposure of mouse peritoneal macrophages to low doses of IFN- α/β and *L. major* promastigotes leads to the expression of iNOS and subsequent killing of intracellular amastigotes. In contrast, high doses and pretreatment exert antagonistic effects on iNOS induction (44). Type I IFN was also reported to correlate with increased susceptibility to *L. infantum* by triggering IL-27 production by macrophages, resulting in inhibition of Th17 responses (45).

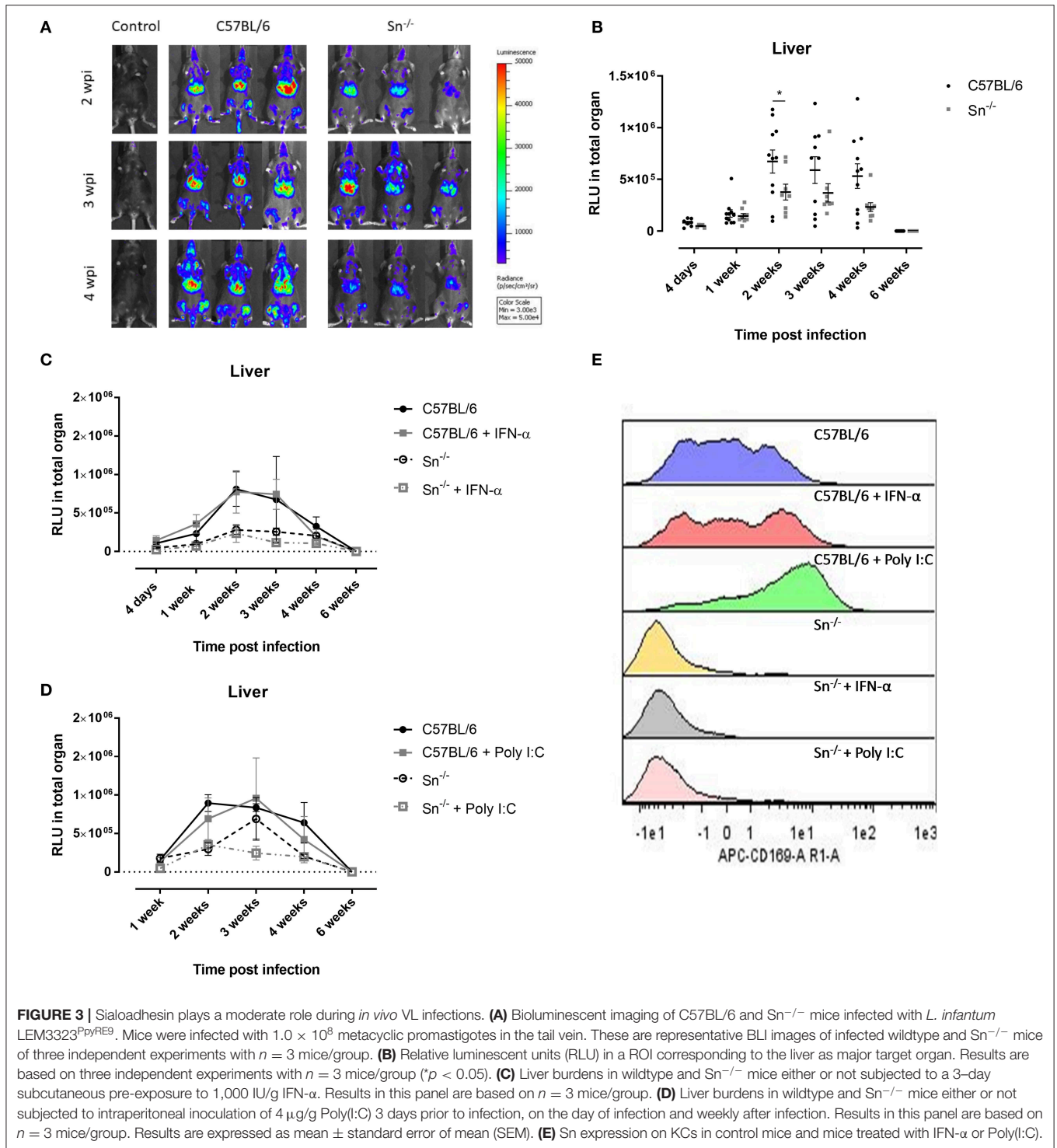
Inspired by the effect of IFN- α and the influence of virus presence, the role of the virus-responsive interferon-stimulated gene sialoadhesin (Sn, CD169, Siglec-1) was explored during *Leishmania* infection as Sn is expressed on macrophages in the major VL target organs. In the liver, KC express Sn and are known to function in clearance of microorganisms and senescent cells/debris from the blood (46). Our data in mice confirm that KCs already express Sn in steady-state conditions. In the spleen, Sn⁺ macrophages are a subpopulation of tissue-resident macrophages positioned in the splenic marginal zone that are among the first cell types to encounter invading pathogens (47). These splenic Sn⁺ are often referred to as the marginal-zone metallophilic macrophages (46, 48, 49). In the bone marrow, Sn⁺ macrophages are found in the stroma (19, 50, 51) and have a scavenging function (19, 20). Importantly, all these Sn⁺ macrophage populations become involved during VL infection (52–54). An *in vitro* study further supported a role for sialic acid binding lectins (Siglec-1 and Siglec-5) in *L. donovani* phagocytosis and down-regulation of innate immune signaling responses (3). Next to Sn, other Siglecs were described to be implicated in pathogen-macrophage interactions (3, 55). For *Leishmania* infection, interaction with siglec-5 was shown to deactivate various downstream signaling pathways resulting in a controlled regulation of cytokines in infected macrophages (3).

The present study indicated that the *in vitro* effect of IFN- α is in large part linked to the upregulation of Sn which was confirmed by complementary approaches, i.e., by using



Sn-deficient mice, by treatment of macrophages with either an anti-Sn monoclonal antibody or a novel anti-Sn bivalent nanobody (lacking the Fc-domain) and by pretreating parasites with soluble Sn. Both genetic deficiency and pharmacological

inhibition largely counteracted the effect of IFN- α . Similarly, Akiyama et al. found that IFN- α stimulation caused enhanced HIV-1 entry and replication in macrophages that could be reduced by pretreatment with an anti-Sn antibody (16). A



study on porcine primary alveolar macrophages documented a significant reduction of phagocytotic capacity after Sn-blocking with a monoclonal antibody (56). Some effects of IFN- α and the pharmacological inhibitors were also noted in Sn^{-/-} mice. This supports the implication of additional effects of IFN- α and suggests potential compensatory mechanisms in Sn^{-/-}

macrophages (e.g., expression of other Siglecs which may explain promiscuity of the pharmacological inhibitors). For instance, IFN-alpha/beta stimulation of macrophages prior to infection was shown to exert antagonistic effects on iNOS expression (44). IFN- α indeed also slightly enhances susceptibility of Sn^{-/-} macrophages. However, these effects are likely to primarily favor

amastigote multiplication, whereas the effects described in this study mainly relate to uptake of the extracellular promastigotes, as illustrated with an established protocol to maximally remove extracellular parasites using horse serum (32).

The role of Sn was further explored *in vivo* by making use of gene-deficient mice (57) and the recently developed bioluminescent *L. infantum* reporter lines LEM3323^{PpyRE9} (29) and ITMAP263^{PpyRE9}. Longitudinal follow-up of hepatic parasite burdens in wildtype and deficient mice revealed that Sn only plays a moderate role during *in vivo* VL infections, depending on the *Leishmania* strain used. These results correspond to earlier findings that the surface display of host sialic acids is strain-dependent, resulting in lower virulence when parasites contain fewer sialic acids (3). We also have shown that Sn is already expressed under steady-state conditions on KCs and that neither IFN- α nor poly (I:C) treatment increase liver burdens.

To our knowledge, this is the first study that explored the *in vivo* contribution of Sn to *Leishmania* infection. The role of Sn seems to vary substantially depending on the pathogen involved. Two studies on *Plasmodium* demonstrated that mice depleted of Sn⁺ macrophages developed significantly higher parasitaemia, weight loss and mortality relative to controls (58, 59), indicating that Sn⁺ macrophages are effective in controlling *Plasmodium in vivo*. *Streptococcus pneumoniae*, known to replicate inside Sn⁺ splenic macrophages, was not hampered in Sn-deficient mice (60). A study by Martinez-Picado (61) investigated the outcome of HIV-1 in Sn null individuals and found no measurable impact of a truncation in the Sn protein on HIV-1 acquisition or AIDS outcome *in vivo*. This actually contrasts with the *in vitro* functional role of Sn in HIV-1 *trans*-infection. Similarly, our study found a definite functional role *in vitro* but a rather moderate impact *in vivo*. A possible explanation is that Sn primarily affects early infection with promastigotes, but plays a less prominent role during an established infection with amastigotes. The amastigote/promastigote-comparison in our study was limited to the ITMAP263 strain which is not highly modulated by IFN- α but for which hamster spleen-derived amastigotes were available. This could not show elevated uptake and expansion of *L. infantum* ITMAP263 amastigotes in IFN- α stimulated macrophages with elevated surface Sn-expression levels. Amastigotes may indeed employ different strategies for macrophage entry than promastigotes (62), especially because sialic acids on the *Leishmania* surface are acquired by adsorption of serum proteins from the host (23, 24). A study by Chava and colleagues (63) using the Indian *L. donovani* strain MHOM/IN/83/AG83 did demonstrate the presence of sialoglycoconjugates on the amastigote surface, which suggests that strain-dependent differences can be expected.

A recent paper delivered a proof-of-concept that blocking Sn by monoclonal antibodies could be of therapeutic value as exemplified by the halting of Ebola viral uptake and cytoplasmic entry in dendritic cells (64). The fact that Sn null individuals exist also suggests that Sn may serve as a safe therapeutic target (61). Our data on VL indicate that Sn plays a moderate role *in vivo*

depending on the parasite strain, although *in vitro* data suggest significant exacerbation in particular conditions with presence of type I interferon. It remains to be seen if the *in vivo* role of the IFN- α /Sn axis could be more prominent under certain conditions, determining whether therapeutic targeting of Sn may deserve further exploration during VL infection and/or in combination with drug treatment.

DATA AVAILABILITY STATEMENT

All datasets generated for this study are included in the article/**Supplementary Material**.

ETHICS STATEMENT

The animal study was reviewed and approved by Ethical committee of the University of Antwerp, Belgium.

AUTHOR CONTRIBUTIONS

LV, PD, LM, and GC: conceived and designed the experiments. LV, DB, MV, LD, DM, and SH: performed the experiments. LV, DB, and GC: analyzed the data. LV, and GC: wrote the manuscript. PD, LM, and GC: critically revised the manuscript.

FUNDING

This project was supported by the Fonds Wetenschappelijk Onderzoek (FWO, Belgium). LV is a Ph.D. fellow of the FWO (1136417N). DB is supported by a DOCPRO4 Ph.D. fellowship of the UA (33265). GC is supported by UA research funds (TT-ZAPBOF 33049 and TOP-BOF 35017). LMPH is a partner of Excellence Center Infla-Med (www.uantwerpen.be/infla-med).

ACKNOWLEDGMENTS

The authors acknowledge Pim-Bart Feijens for his help with the animal experiments and Rik Hendrickx for his help during the Biv4.40 nanobody purification and binding experiments. We thank Prof. Paul Crocker for the Sn-deficient mice and Prof. Dirk Elewaut and dr. Els Louagie (VIB-UGent) for providing breeding pairs of Sn-deficient mice. Also thanks to Prof. Hans Nauwynck and dr. Inge Hoebeke (UGent) for providing the anti-Sn Biv4.40 Nb expression clone and to dr. Javier Moreno and dr. Nieto Javier (WHO Collaborating Center for Leishmaniasis) for providing a panel of recent clinical *Leishmania* strains.

SUPPLEMENTARY MATERIAL

The Supplementary Material for this article can be found online at: <https://www.frontiersin.org/articles/10.3389/fimmu.2020.01113/full#supplementary-material>

Supplementary Figure 1 | Purification and binding of Biv4.40 nanobody to Sn-expressing CHO cells. **(A)** Size exclusion chromatography (SEC) profile of Biv4.40 (30 kDa) with an elution peak at 22 min. Abs, absorbance at 280 nm. Biv4.40 binding onto CHO control cells **(B)** and CHO cells expressing mouse

sialoadhesin (mSn⁺) **(C)** Cells were stained with Biv4.40 nanobody and anti-myc Alexa Fluor 488 (green) and with DAPI (blue).

Supplementary Figure 2 | Gating strategy for KCs. KCs were gated according to their CD45⁺ F4/80⁺ Tim4⁺ expression profile.

Supplementary Figure 3 | Cytokine profile over time after infection with LEM3323^{PpyRE9} in wildtype and Sn^{-/-} C57BL/6 mice. Cytokine data of serum samples from C57BL/6 and Sn^{-/-} mice infected in the tail vein with 1.0 × 10⁸ metacyclic promastigotes of *L. infantum* MHOM/FR/96/LEM^{3323PpyRE9}. Cytokines **(A)** IL-6, **(B)** IL-10, **(C)** TNF- γ , **(D)** KC/GRO and **(E)** IFN- γ were analyzed with

multiplex ELISA. Results in this panel are based two experiments with $n = 3$ mice/group. Results are expressed as mean \pm standard error of mean (SEM).

Supplementary Figure 4 | Role of Sn during ITMAP263^{PpyRE9} infection. **(A)** Bioluminescent imaging of C57BL/6 and Sn^{-/-} mice infected with *L. infantum* ITMAP^{PpyRE9}. Mice were infected with 1.0 × 10⁸ metacyclic promastigotes in the tail vein. **(B)** Relative luminescent units (RLU) in a ROI corresponding to the liver as major target organ. **(C)** Liver burdens in wildtype and Sn^{-/-} mice either or not subjected to intraperitoneal inoculation of 4 μ g/g Poly(I:C). Results are expressed as mean \pm standard error of mean (SEM).

REFERENCES

- Alvar J, Velez ID, Bern C, Herrero M, Desjeux P, Cano J, et al. Leishmaniasis worldwide and global estimates of its incidence. *PLoS ONE*. (2012) 7:e35671. doi: 10.1371/journal.pone.0035671
- Kamhawi S. Phlebotomine sand flies and *Leishmania* parasites: friends or foes? *Trends Parasitol*. (2006) 22:439–45. doi: 10.1016/j.pt.2006.06.012
- Roy S, Mandal C. *Leishmania donovani* utilize sialic acids for binding and phagocytosis in the macrophages through selective utilization of siglecs and impair the innate immune arm. *PLoS Negl Trop Dis*. (2016) 10:e0004904. doi: 10.1371/journal.pntd.0004904
- Kaye P, Scott P. Leishmaniasis: complexity at the host-pathogen interface. *Nat Rev Microbiol*. (2011) 9:604–15. doi: 10.1038/nrmicro2608
- Rossi M, Castiglioni P, Hartley MA, Eren RO, Prevel F, Desponds C, et al. Type I interferons induced by endogenous or exogenous viral infections promote metastasis and relapse of leishmaniasis. *Proc Natl Acad Sci USA*. (2017) 114:4987–92. doi: 10.1073/pnas.1621447114
- Adaui V, Lye LF, Akopyants NS, Zimic M, Llanos-Cuentas A, Garcia L, et al. Association of the endobiont double-stranded RNA virus LRV1 with treatment failure for human leishmaniasis caused by *Leishmania braziliensis* in peru and bolivia. *J Infect Dis*. (2016) 213:112–21. doi: 10.1093/infdis/jiv354
- Hajjaran H, Mahdi M, Mohebbi M, Samimi-Rad K, Ataei-Pirkooch A, Kazemi-Rad E, et al. Detection and molecular identification of *Leishmania* RNA virus (LRV) in Iranian *Leishmania* species. *Arch Virol*. (2016) 161:3385–90. doi: 10.1007/s00705-016-3044-z
- Parmentier L, Cusini A, Muller N, Zangger H, Hartley MA, Desponds C, et al. Severe cutaneous leishmaniasis in a human immunodeficiency virus patient coinfecting with *Leishmania braziliensis* and its endosymbiotic virus. *Am J Trop Med Hyg*. (2016) 94:840–3. doi: 10.4269/ajtmh.15-0803
- Kariyawasam R, Grewal J, Lau R, Purssell A, Valencia BM, Llanos-Cuentas A, et al. Influence of *Leishmania* RNA virus 1 on proinflammatory biomarker expression in a human macrophage model of american tegumentary leishmaniasis. *J Infect Dis*. (2017) 216:877–86. doi: 10.1093/infdis/jix416
- Atayde VD, Da Silva Lira Filho A, Chaparro V, Zimmermann A, Martel C, Jaramillo M, et al. Exploitation of the *Leishmania* exosomal pathway by *Leishmania* RNA virus 1. *Nat Microbiol*. (2019) 4:714–23. doi: 10.1038/s41564-018-0352-y
- Ives A, Ronet C, Prevel F, Ruzzante G, Fuertes-Marraco S, Schutz F, et al. *Leishmania* RNA virus controls the severity of mucocutaneous leishmaniasis. *Science*. (2011) 331:775–8. doi: 10.1126/science.1199326
- Hartley MA, Ronet C, Zangger H, Beverley SM, Fasel N. *Leishmania* RNA virus: when the host pays the toll. *Front Cell Infect Microbiol*. (2012) 2:99. doi: 10.3389/fcimb.2012.00099
- Ivashkiv LB, Donlin LT. Regulation of type I interferon responses. *Nat Rev Immunol*. (2014) 14:36–49. doi: 10.1038/nri3581
- Delputte PL, Van Breedam W, Barbe F, Van Reeth K, Nauwynck HJ. IFN- α treatment enhances porcine arterivirus infection of monocytes via upregulation of the porcine arterivirus receptor sialoadhesin. *J Interferon Cytokine Res*. (2007) 27:757–66. doi: 10.1089/jir.2007.0001
- York MR, Nagai T, Mangini AJ, Lemaire R, Van Seventer JM, Lafyatis R. A macrophage marker, siglec-1, is increased on circulating monocytes in patients with systemic sclerosis and induced by type I interferons and toll-like receptor agonists. *Arthritis Rheum*. (2007) 56:1010–20. doi: 10.1002/art.22382
- Akiyama H, Ramirez NP, Gibson G, Kline C, Watkins S, Ambrose Z, et al. Interferon-inducible CD169/siglec1 attenuates anti-HIV-1 effects of alpha interferon. *J Virol*. (2017) 91:e00972–17. doi: 10.1128/JVI.00972-17
- De Schryver M, Cappoen D, Elewaut D, Nauwynck HJ, Maes L, Caljon G, et al. Monoclonal antibody binding to the macrophage-specific receptor sialoadhesin alters the phagocytic properties of human and mouse macrophages. *Cell Immunol*. (2017) 312:51–60. doi: 10.1016/j.cellimm.2016.11.009
- Crocker PR, Varki A. Siglecs, sialic acids and innate immunity. *Trends Immunol*. (2001) 22:337–42. doi: 10.1016/S1471-4906(01)01930-5
- Hartnell A, Steel J, Turley H, Jones M, Jackson DG, Crocker PR. Characterization of human sialoadhesin, a sialic acid binding receptor expressed by resident and inflammatory macrophage populations. *Blood*. (2001) 97:288–96. doi: 10.1182/blood.V97.1.288
- Chow A, Huggins M, Ahmed J, Hashimoto D, Lucas D, Kunisaki Y, et al. CD169(+) macrophages provide a niche promoting erythropoiesis under homeostasis and stress. *Nat Med*. (2013) 19:429–36. doi: 10.1038/nm.3057
- Crocker PR, Paulson JC, Varki A. Siglecs and their roles in the immune system. *Nat Rev Immunol*. (2007) 7:255. doi: 10.1038/nri2056
- Pino M, Erkizia I, Benet S, Erikson E, Fernandez-Figueras MT, Guerrero D, et al. HIV-1 immune activation induces siglec-1 expression and enhances viral trans-infection in blood and tissue myeloid cells. *Retrovirology*. (2015) 12:37. doi: 10.1186/s12977-015-0160-x
- Chatterjee M, Chava AK, Kohla G, Pal S, Merling A, Hinderlich S, et al. Identification and characterization of adsorbed serum sialoglycans on *Leishmania donovani* promastigotes. *Glycobiology*. (2003) 13:351–61. doi: 10.1093/glycob/cwg027
- Khatua B, Roy S, Mandal C. Sialic acids siglec interaction: a unique strategy to circumvent innate immune response by pathogens. *Indian J Med Res*. (2013) 138:648–62.
- Heikema AP, Koning RI, Duarte Dos Santos Rico S, Rempel H, Jacobs BC, Endtz HP, et al. Enhanced, sialoadhesin-dependent uptake of guillain-barre syndrome-associated *Campylobacter jejuni* strains by human macrophages. *Infect Immun*. (2013) 81:2095–103. doi: 10.1128/IAI.01437-12
- Chang YC, Olson J, Louie A, Crocker PR, Varki A, Nizet V. Role of macrophage sialoadhesin in host defense against the sialylated pathogen group B *Streptococcus*. *J Mol Med*. (2014) 92:951–9. doi: 10.1007/s00109-014-1157-y
- Monteiro VG, Lobato CS, Silva AR, Medina DV, De Oliveira MA, Seabra SH, et al. Increased association of *Trypanosoma cruzi* with sialoadhesin positive mice macrophages. *Parasitol Res*. (2005) 97:380–5. doi: 10.1007/s00436-005-1460-1
- Hendrickx S, Caljon G, Maes L. *In vitro* growth inhibition assays of *Leishmania* spp. *Methods Mol Biol*. (2020) 2116:791–800. doi: 10.1007/978-1-0716-0294-2_47
- Eberhardt E, Bulte D, Van Bockstal L, Van Den Kerkhof M, Cos P, Delputte P, et al. Miltefosine enhances the fitness of a non-virulent drug-resistant *Leishmania infantum* strain. *J Antimicrob Chemother*. (2018) 74:395–406. doi: 10.1093/jac/dky450
- De Schryver M, Van Gorp H, Hoebeke I, De Maeyer B, Ooms K, Pintelon I, et al. Development and characterization of new species cross-reactive anti-sialoadhesin monoclonal antibodies. *Antibodies*. (2016) 5:E7. doi: 10.3390/antib5020007
- Van Den Kerkhof M, Van Bockstal L, Gielis JF, Delputte P, Cos P, Maes L, et al. Impact of primary mouse macrophage cell types on *Leishmania* infection and *in vitro* drug susceptibility. *Parasitol Res*. (2018) 117:3601–12. doi: 10.1007/s00436-018-6059-4

32. Tegazzini D, Díaz R, Aguilar F, Peña I, Presa JL, Yardley V, et al. A replicative *in vitro* assay for drug discovery against *Leishmania Donovanii*. *Antimicrob Agents Chemother.* (2016) 60:3524–32. doi: 10.1128/AAC.01781-15
33. Hendrickx S, Mondelaers A, Eberhardt E, Lachaud L, Delputte P, Cos P, et al. Intracellular amastigote replication may not be required for successful *in vitro* selection of miltefosine resistance in *Leishmania infantum*. *Parasitol Res.* (2015) 114:2561–5. doi: 10.1007/s00436-015-4460-9
34. Sarasin-Filipowicz M, Wang X, Yan M, Duong FH, Poli V, Hilton DJ, et al. Alpha interferon induces long-lasting refractoriness of JAK-STAT signaling in the mouse liver through induction of USP18/UBP43. *Mol Cell Biol.* (2009) 29:4841–51. doi: 10.1128/MCB.00224-09
35. Lantier L, Drouet F, Guesdon W, Mancassola R, Metton C, Lo-Man R, et al. Poly(I:C)-induced protection of neonatal mice against intestinal *Cryptosporidium Parvum* infection requires an additional TLR5 signal provided by the gut flora. *J Infect Dis.* (2014) 209:457–67. doi: 10.1093/infdis/jit432
36. Abongomera C, Diro E, Vogt F, Tsoumanis A, Mekonnen Z, Admassu H, et al. The risk and predictors of visceral leishmaniasis relapse in human immunodeficiency virus-coinfected patients in ethiopia: a retrospective cohort study. *Clin Infect Dis.* (2017) 65:1703–10. doi: 10.1093/cid/cix607
37. Eren RO, Reverte M, Rossi M, Hartley MA, Castiglioni P, Prevel F, et al. Mammalian innate immune response to a *Leishmania*-resident RNA virus increases macrophage survival to promote parasite persistence. *Cell Host Microbe.* (2016) 20:318–28. doi: 10.1016/j.chom.2016.08.001
38. Grybchuk D, Akopyants NS, Kostygov AY, Konovalova A, Lye LF, Dobson DE, et al. Viral discovery and diversity in trypanosomatid protozoa with a focus on relatives of the human parasite *Leishmania*. *Proc Natl Acad Sci USA.* (2018) 115:E506–E515. doi: 10.1073/pnas.1717806115
39. Gardinassi LG, Garcia GR, Costa CHN, Silva VC, De Miranda Santos IKF. Blood transcriptional profiling reveals immunological signatures of distinct states of infection of humans with *Leishmania Infantum*. *PLoS Negl Trop Dis.* (2016) 10:e0005123. doi: 10.1371/journal.pntd.0005123
40. Agallou M, Athanasiou E, Kammona O, Tastsoglou S, Hatzigeorgiou AG, Kiparissides C, et al. Transcriptome analysis identifies immune markers related to visceral leishmaniasis establishment in the experimental model of BALB/c mice. *Front Immunol.* (2019) 10:2749. doi: 10.3389/fimmu.2019.02749
41. Phillips R, Svensson M, Aziz N, Maroof A, Brown N, Beattie L, et al. Innate killing of *Leishmania donovani* by macrophages of the splenic marginal zone requires IRF-7. *PLoS Pathog.* (2010) 6:e1000813. doi: 10.1371/journal.ppat.1000813
42. Mattner J, Wandersee-Steinhäuser A, Pahl A, Röllinghoff M, Majeau GR, Hochman PS, et al. Protection against progressive leishmaniasis by IFN- β . *J Immunol.* (2004) 172:7574–82. doi: 10.4049/jimmunol.172.12.7574
43. Schleicher U, Liese J, Justies N, Mischke T, Haerberlein S, Sebald H, et al. Type I interferon signaling is required for CpG-Oligodesoxynucleotide-induced control of *Leishmania major*, but not for spontaneous cure of subcutaneous primary or secondary L. major infection. *Front Immunol.* (2018) 9:79. doi: 10.3389/fimmu.2018.00079
44. Mattner J, Schindler H, Diefenbach A, Röllinghoff M, Gresser I, Bogdan C. Regulation of type 2 nitric oxide synthase by type 1 interferons in macrophages infected with *Leishmania major*. *Eur J Immunol.* (2000) 30:2257–67. doi: 10.1002/1521-4141(2000)30:8<2257::AID-IMMU2257>3.0.CO;2-U
45. Quirino GF, Nascimento MS, Davoli-Ferreira M, Sacramento LA, Lima MH, Almeida RP, et al. Interleukin-27 (IL-27) mediates susceptibility to visceral leishmaniasis by suppressing the IL-17–neutrophil response. *Infect Immun.* (2016) 84:2289–98. doi: 10.1128/IAI.00283-16
46. Davies LC, Jenkins SJ, Allen JE, Taylor PR. Tissue-resident macrophages. *Nat Immunol.* (2013) 14:986–95. doi: 10.1038/ni.2705
47. Perez OA, Yeung ST, Vera-Licona P, Romagnoli PA, Samji T, Ural BB, et al. CD169+ macrophages orchestrate innate immune responses by regulating bacterial localization in the spleen. *Sci Immunol.* (2017) 2:eah5520. doi: 10.1126/sciimmunol.ah5520
48. Mebius RE, Kraal G. Structure and function of the spleen. *Nat Rev Immunol.* (2005) 5:606–16. doi: 10.1038/nri1669
49. Machelart A, Khadrawi A, Demars A, Willemart K, De Trez C, Letesson JJ, et al. Chronic *Brucella* infection induces selective and persistent interferon gamma-dependent alterations of marginal zone macrophages in the spleen. *Infect Immun.* (2017) 85:e00115–7. doi: 10.1128/IAI.00115-17
50. Chow A, Lucas D, Hidalgo A, Mendez-Ferrer S, Hashimoto D, Scheiermann C, et al. Bone marrow CD169+ macrophages promote the retention of hematopoietic stem and progenitor cells in the mesenchymal stem cell niche. *J Exp Med.* (2011) 208:261–71. doi: 10.1084/jem.20101688
51. Kaur S, Raggatt LJ, Millard SM, Wu AC, Batoon L, Jacobsen RN, et al. Self-repopulating recipient bone marrow resident macrophages promote long-term hematopoietic stem cell engraftment. *Blood.* (2018) 132:735–49. doi: 10.1182/blood-2018-01-829663
52. Engwerda CR, Ato M, Cotterell SE, Mynott TL, Tschannerl A, Gorak-Stolinska PM, et al. A role for tumor necrosis factor-alpha in remodeling the splenic marginal zone during *Leishmania donovani* infection. *Am J Pathol.* (2002) 161:429–37. doi: 10.1016/S0002-9440(10)64199-5
53. Beattie L, Peltan A, Maroof A, Kirby A, Brown N, Coles M, et al. Dynamic imaging of experimental *Leishmania donovani*-induced hepatic granulomas detects Kupffer cell-restricted antigen presentation to antigen-specific CD8 T cells. *PLoS Pathog.* (2010) 6:e1000805. doi: 10.1371/journal.ppat.1000805
54. Preham O, Pinho FA, Pinto AI, Rani GF, Brown N, Hitchcock IS, et al. CD4(+) T cells alter the stromal microenvironment and repress medullary erythropoiesis in murine visceral leishmaniasis. *Front Immunol.* (2018) 9:2958. doi: 10.3389/fimmu.2018.02958
55. Chang Y-C, Nizet V. The interplay between siglecs and sialylated pathogens. *Glycobiology.* (2014) 24:818–25. doi: 10.1093/glycob/cwu067
56. De Baere MI, Van Gorp H, Nauwynck HJ, Delputte PL. Antibody binding to porcine sialoadhesin reduces phagocytic capacity without affecting other macrophage effector functions. *Cell Immunol.* (2011) 271:462–73. doi: 10.1016/j.cellimm.2011.08.016
57. Oetke C, Vinson MC, Jones C, Crocker PR. Sialoadhesin-deficient mice exhibit subtle changes in B- and T-cell populations and reduced immunoglobulin M levels. *Mol Cell Biol.* (2006) 26:1549–57. doi: 10.1128/MCB.26.4.1549-1557.2006
58. Fontana MF, De Melo GL, Anidi C, Hamburger R, Kim CY, Lee SY, et al. Macrophage colony stimulating factor derived from CD4+ T cells contributes to control of a blood-borne infection. *PLoS Pathog.* (2016) 12:e1006046. doi: 10.1371/journal.ppat.1006046
59. Gupta P, Lai SM, Sheng J, Tetlak P, Balachander A, Claser C, et al. Tissue-resident CD169(+) macrophages form a crucial front line against *Plasmodium* infection. *Cell Rep.* (2016) 16:1749–61. doi: 10.1016/j.celrep.2016.07.010
60. Ercoli G, Fernandes VE, Chung WY, Wanford JJ, Thomson S, Bayliss CD, et al. Intracellular replication of *Streptococcus pneumoniae* inside splenic macrophages serves as a reservoir for septicaemia. *Nat Microbiol.* (2018) 3:600–10. doi: 10.1038/s41564-018-0147-1
61. Martinez-Picado J, McLaren PJ, Erkizia I, Martin MP, Benet S, Rotger M, et al. Identification of siglec-1 null individuals infected with HIV-1. *Nat Commun.* (2016) 7:12412. doi: 10.1038/ncomms12412
62. Ueno N, Wilson ME. Receptor-mediated phagocytosis of *Leishmania*: implications for intracellular survival. *Trends Parasitol.* (2012) 28:335–44. doi: 10.1016/j.pt.2012.05.002
63. Chava AK, Chatterjee M, Gerwig GJ, Kamerling JP, Mandal C. Identification of sialic acids on *Leishmania donovani* amastigotes. *Biol Chem.* (2004) 385:59–66. doi: 10.1515/BC.2004.008
64. Perez-Zsolt D, Erkizia I, Pino M, Garcia-Gallo M, Martin MT, Benet S, et al. Anti-siglec-1 antibodies block ebola viral uptake and decrease cytoplasmic viral entry. *Nat Microbiol.* (2019) 4:1558–70. doi: 10.1038/s41564-019-0453-2

Conflict of Interest: The authors declare that the research was conducted in the absence of any commercial or financial relationships that could be construed as a potential conflict of interest.

Copyright © 2020 Van Bockstal, Bulté, Van den Kerkhof, Dirx, Mabile, Hendrickx, Delputte, Maes and Caljon. This is an open-access article distributed under the terms of the Creative Commons Attribution License (CC BY). The use, distribution or reproduction in other forums is permitted, provided the original author(s) and the copyright owner(s) are credited and that the original publication in this journal is cited, in accordance with accepted academic practice. No use, distribution or reproduction is permitted which does not comply with these terms.