



# TRPV4 Mediates Acute Bladder Responses to Bacterial Lipopolysaccharides

Yeranddy A. Alpizar<sup>1,2†</sup>, Pieter Uvin<sup>1,3†</sup>, Robbe Naert<sup>1,2</sup>, Jan Franken<sup>1,3</sup>, Silvia Pinto<sup>1,2</sup>, Alicia Sanchez<sup>1,2</sup>, Thomas Gevaert<sup>3</sup>, Wouter Everaerts<sup>1,3</sup>, Thomas Voets<sup>1,2</sup>, Dirk De Ridder<sup>3</sup> and Karel Talavera<sup>1,2\*</sup>

<sup>1</sup> Laboratory for Ion Channel Research, Department of Cellular and Molecular Medicine, VIB Center for Brain & Disease Research, Leuven, Belgium, <sup>2</sup> VIB Center for Brain & Disease Research, Leuven, Belgium, <sup>3</sup> Laboratory of Organ System, Department of Development and Regeneration, KU Leuven, Leuven, Belgium

## OPEN ACCESS

### Edited by:

Albrecht Schwab,  
University of Münster, Germany

### Reviewed by:

Miguel Angel Valverde,  
Pompeu Fabra University, Spain  
Chaofeng Han,  
Second Military Medical University,  
China

### \*Correspondence:

Karel Talavera  
karel.talavera@kuleuven.vib.be;  
karel.talavera@med.kuleuven.be

† These authors share first authorship

### Specialty section:

This article was submitted to  
Molecular Innate Immunity,  
a section of the journal  
Frontiers in Immunology

Received: 31 January 2020

Accepted: 07 April 2020

Published: 06 May 2020

### Citation:

Alpizar YA, Uvin P, Naert R,  
Franken J, Pinto S, Sanchez A,  
Gevaert T, Everaerts W, Voets T,  
De Ridder D and Talavera K (2020)  
TRPV4 Mediates Acute Bladder  
Responses to Bacterial  
Lipopolysaccharides.  
Front. Immunol. 11:799.  
doi: 10.3389/fimmu.2020.00799

Urinary tract infections (UTI) affect a large proportion of the population, causing among other symptoms, more frequent and urgent micturition. Previous studies reported that the gram-negative bacterial wall component lipopolysaccharides (LPS) trigger acute epithelial and bladder voiding responses, but the underlying mechanisms remain unknown. The cation channel TRPV4 is implicated in the regulation of the bladder voiding. Since TRPV4 is activated by LPS in airway epithelial cells, we sought to determine whether this channel plays a role in LPS-induced responses in urothelial cells (UCs). We found that human-derived UCs display a fast increase in intracellular Ca<sup>2+</sup> concentration upon acute application of *Escherichia coli* LPS. Such responses were detected also in freshly isolated mouse UCs, and found to be dependent on TRPV4, but not to require the canonical TLR4 signaling pathway of LPS detection. Confocal microscopy experiments revealed that TRPV4 is dispensable for LPS-induced nuclear translocation of NF-κB in mouse UCs. On the other hand, quantitative RT PCR determinations showed an enhanced LPS-induced production of proinflammatory cytokines in TRPV4-deficient UCs. Cystometry experiments in anesthetized wild type mice revealed that acute intravesical instillation of LPS rapidly increases voiding frequency. This effect was not observed in TRPV4-deficient animals, but was largely preserved in *Tlr4* KO and *Trpa1* KO mice. Our results suggest that activation of TRPV4 by LPS in UCs regulates the proinflammatory response and contributes to LPS-induced increase in voiding frequency. These findings further support the concept that TRP channels are sensors of LPS, mediating fast innate immunity mechanisms against gram-negative bacteria.

**Keywords:** LPS, TRPV4, bladder, urothelial cells, cystitis

## INTRODUCTION

Epithelial cells lining the bladder and upper urinary tracts play key roles in defensive mechanisms against urinary tract infections (UTI). In addition to serving as physical barrier, urothelial cells (UCs) act as first responders upon recognition of several virulence factors, such as hemolysin and cytotoxic necrotizing factor, the siderophore aerobactin, bacterial capsules and lipopolysaccharide (LPS) (1). UCs host several defensive responses against invading bacteria, of which the most common is uropathogenic *Escherichia coli*

(2, 3). These include the production of specific soluble epithelial cell-derived mediators (i.e.: lactoferrin, soluble IgA, Tamm-Horsfall protein, lipocalin), bactericidal antimicrobial peptides (defensins, cathelicidin), and bacterial clearance by urothelium exfoliation mechanisms (3). In addition, LPS recognition by Toll-like receptor 4 (TLR4) activates the transcriptional factor NF- $\kappa$ B, which regulates the expression of several immunomodulatory cytokines (4), causing the infiltration of inflammatory cells, and eventually edema and hemorrhage (5–8). These histological changes in the bladder wall are accompanied by burning sensation during urination, low-abdominal pain and frequent urge to urinate, typical symptoms of UTI (9).

Interestingly, there is evidence for rather fast bladder responses to LPS. For instance, acute application of LPS induces an increase of intracellular  $\text{Ca}^{2+}$  concentration within minutes and secretion of the proinflammatory cytokine IL-6 in a grade II human carcinoma bladder epithelium cell line (10). Furthermore, an increased mouse bladder voiding frequency was observed 1 h after direct intravesical instillation of LPS, that is, sooner than any histological inflammatory changes have been detected (11). Although these effects may be regarded as early bladder defensive responses against bacterial infection based LPS detection, the underlying mechanisms remain unknown.

We recently showed that airway epithelial cells respond to LPS with an elevation of cytosolic  $\text{Ca}^{2+}$  via the activation of the Transient Receptor Potential Vanilloid 4 (TRPV4) cation channel. This triggers protective responses such as production of bactericidal nitric oxide and increased ciliary beat frequency within a few minutes (12). Similar to airway epithelial cells, UCs have a prominent expression of TRPV4, and activation of this channel has been implicated in the mechanisms of bladder voiding (13, 14).

Thus, in this study we tested the hypothesis that LPS activates TRPV4 in UCs, which might lead to immediate increase in intracellular  $\text{Ca}^{2+}$  concentration, regulation of cytokine production and to changes in the bladder voiding pattern. To do this, we performed intracellular  $\text{Ca}^{2+}$  imaging experiments and NF- $\kappa$ B nuclear translocation and cytokine expression determinations in freshly isolated UCs. We found that *E. coli* LPS activates TRPV4 in UCs independent of the TLR4 signaling pathway. Activation of TRPV4 did not have an impact in NF- $\kappa$ B nuclear translocation, but we obtained evidence for a regulatory role of TRPV4 on the increase in proinflammatory cytokine expression induced by LPS. Finally, using cystometry in anesthetized mice, we found that TRPV4, but not TLR4, is required for a fast increase in voiding frequency triggered by intravesical instillation of LPS.

## MATERIALS AND METHODS

### Animals

*Trpv4* KO mice were kindly provided by Prof W. Liedtke (Duke University, Durham, NC). *Tlr4* KO (B6.B10ScN-Tlr4<sup>lps-del/JthJ</sup>) mice were purchased at Charles River Laboratories (Chatillon-sur-Chalaronne, France). These knockout strains were backcrossed at least ten times into the C57BL/6J background,

and C57BL/6J mice were used as wild type controls. Mice of all genotypes were housed under identical conditions, with a maximum of four animals per cage on a 12-h light-dark cycle and with food and water *ad libitum*. Ten- to twelve-week-old female mice were used in all experiments. All animal experiments were carried out in accordance with the European Union Community Council guidelines and were approved by the local ethics committee.

### Primary Urothelial Cells Culture

Isolation and culture of mouse urothelial cells was performed as previously described by others (15). After euthanasia, bladders were quickly removed, cut open, and stretched out on a Sylgard-coated dish containing MEM (Invitrogen, Merelbeke, Belgium) with 2.5 mg/ml dispase (Invitrogen) for 2 h at room temperature. After incubation, the urothelium was gently scraped from the underlying tissue, treated with trypsin-EDTA (Invitrogen) for 15 min, and resuspended in defined keratinocyte serum-free medium (Invitrogen). The cell suspension was plated on collagen (type IV; Sigma, Overijse, Belgium)-coated coverslips. Cells were used for experiments 16 h after isolation.

Human urothelial cells were collected from bladder cancer patients undergoing cystectomy, as previously described (16). Briefly, healthy bladder strips were incubated overnight at 4°C in sterile HBSS-based stripping solution containing 14 mM HEPES, 20 KIU aprotinin, 0.1% EDTA, pH 7.6. After incubation, the urothelium was gently scraped, treated with collagenase for 15 min, and resuspended in keratinocyte medium (Invitrogen). Cells were seeded in gelatin-coated glass coverslip and used for experiments 16 h after isolation.

### Intracellular $\text{Ca}^{2+}$ Imaging

Urothelial cells were incubated with Fura-2 acetoxymethyl (2  $\mu$ M) ester for 30 min at 37°C. During recordings cells were perfused by gravity via a multi-barreled pipette tip with bath solutions prepared in Krebs, containing (in mM): 150 NaCl, 6 KCl, 1.5  $\text{CaCl}_2$ , 1  $\text{MgCl}_2$ , and 10 HEPES, 10 glucose and titrated to 7.4 with NaOH. Intracellular  $\text{Ca}^{2+}$  concentration was monitored through the ratio of fluorescence measured upon alternating illumination at 340 and 380 nm using an MT-10 illumination system and the Xcellence pro software (Olympus Belgium N.V., Berchem, Belgium).

### Quantitative Real-Time PCR

Total RNA from cultured urothelial cells was extracted using the RNeasy Mini Kit (Qiagen, Antwerp, Belgium), following manufacturer's protocol. RNA concentration was determined in a micro-volume spectrophotometer DropSense16 (Trinean NV, Gent, Belgium). cDNA synthesis was performed with 1  $\mu$ g of total RNA using the Ready-To-Go You-Prime First-Strand Beads (GE Healthcare, Diegem, Belgium). Quantitative PCR reactions (20  $\mu$ l), containing 3  $\mu$ l cDNA template (diluted 1:5), Universal TaqMan MasterMix (2x concentrated, Life Technologies), specific TaqMan probes (Table 1, 20 $\times$  concentrated, Life Technologies) and  $\text{H}_2\text{O}$ , were performed with the 7500 Fast Real-Time PCR System (Life Technologies). Reactions were made using the following program: 50°C for 2 min and 95°C for 10 min,

**TABLE 1** | List of TaqMan probes.

Gene name	Probe ID (in Applied Biosystems)
<i>Trpv2</i>	Mm00449223_m1
<i>Trpv4</i>	Mm00499025_m1
<i>Trpm7</i>	Mm00457998_m1
<i>Tlr4</i>	Mm00445273_m1
<i>Gapdh</i>	Mm99999915_g1
<i>Il-1b</i>	Mm00434228_m1
<i>Cxcl-1</i>	Mm04207460_m1
<i>Cxcl-2</i>	Mm00436450_m1
<i>Tnf</i>	Mm00443258_m1

followed by 40 cycles of 95°C for 15 s and 60°C for 1 min. Non-template controls (NTCs) were used as negative controls in every experiment.

## Confocal Microscopy

Freshly isolated urothelial cells from wild type, *Trpv4* KO and *Tlr4* KO mice were seeded in glass coverslips and exposed to LPS (20 µg/ml) for 30 min. After treatment, cells were fixed with cold paraformaldehyde and permeabilized with 0.2% Triton X-100. Primary antibody against p65 NF-κB (1:250; Cell Signaling #4764) or S534-phosphorylated p65 NF-κB (1:800; Cell Signaling #3033) was incubated overnight at 4°C, followed by anti-rabbit Alexa Fluor 633 (1:600; A21070, Invitrogen) for 1 h at room temperature. Coverslips were mounted in glass slides using DAPI-containing mounting solution (VectaShield, Vector Laboratories, Burlingame, CA, United States). Confocal images were obtained from ten randomly selected fields from three independent experiments using the optimal pinhole size for the 63X oil objective on a Zeiss LSM 880-Airyscan (Carl Zeiss AG, Oberkochen, Germany). Images were analyzed using Fiji software (17) as described before (18).

## Cystometry

Catheter implantation and intravesical pressure recordings were performed as previously described (19). All recordings were performed under urethane anesthesia, and body temperature was maintained at 37°C using a heating lamp and an animal temperature controller (World Precision Instruments, Hertfordshire, United Kingdom). Bladders were infused with saline at a constant rate (20 µl/min), inducing repetitive cycles of bladder filling and voiding. After an equilibration period of 60 min, baseline intravesical pressures were recorded for 30 min. The infusion fluid was then switched to a solution containing LPS in saline, and intravesical pressures were measured again for 30 min. In a group of animals HC-067047 (1 ml at 100 µM = 2.35 mg/kg) was administered intraperitoneally 30 min prior recordings.

## Statistics

Magnitudes were statistically compared using GraphPad Prism version 7.0d for MacOS, GraphPad Software, La Jolla, CA, United States<sup>1</sup> (<sup>1</sup>www.graphpad.com). The non-parametric Wilcoxon and Mann-Whitney *U* tests were used to determine

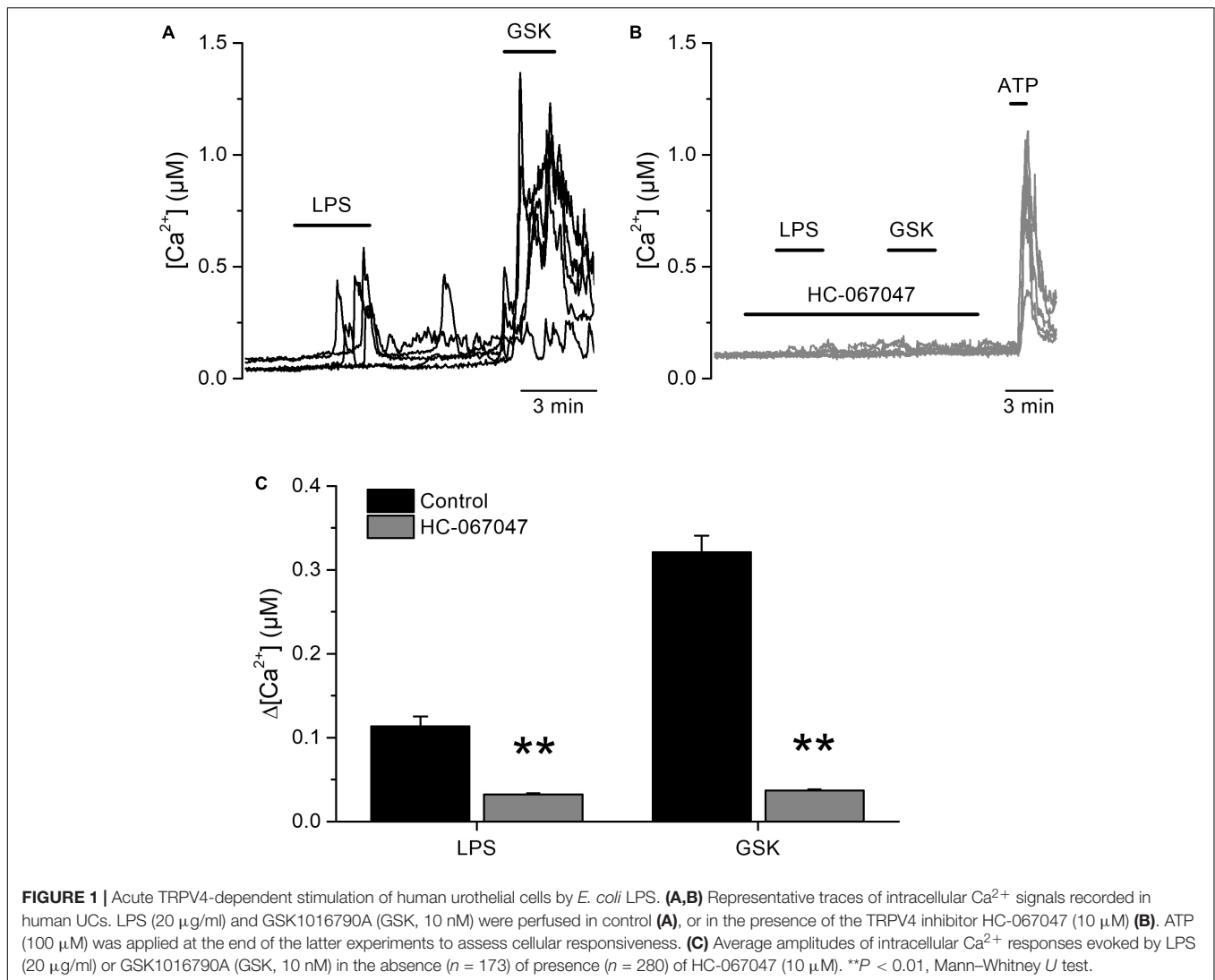
statistically significant changes and differences in medians, respectively. Differences were considered to be statistically significant when  $P < 0.05$  (labeled as \* in the Figures), but  $P < 0.01$  (\*\*) was also indicated when applicable.

## RESULTS

### TRPV4 Mediates LPS-Induced Ca<sup>2+</sup> Entry in Freshly Isolated Urothelial Cells

To determine whether LPS induces acute responses in freshly isolated human urothelial cells (hUCs) we isolated hUCs from bladder strips obtained after cystectomy and followed the dynamics of intracellular Ca<sup>2+</sup> concentration using Fura-2. We explored the effects of LPS in the micromolar range of concentrations to be able to compare our results to those previously reported (10, 20). We found that acute application of *E. coli* LPS (20 µg/ml) induced a significant increase in the intracellular Ca<sup>2+</sup> concentration in 41% (72 out of 173) of cells responding to the TRPV4-specific agonist GSK1016790A. The rise in intracellular Ca<sup>2+</sup> concentration appears rapidly after LPS application and was quickly reversed upon LPS washout (**Figure 1A**). Pharmacological inhibition of TRPV4 with the specific antagonist HC-067047 (21) strongly suppressed LPS- and GSK1016790A-induced responses (**Figures 1B,C**), indicating that TRPV4 activation is necessary for the immediate response of hUCs to LPS.

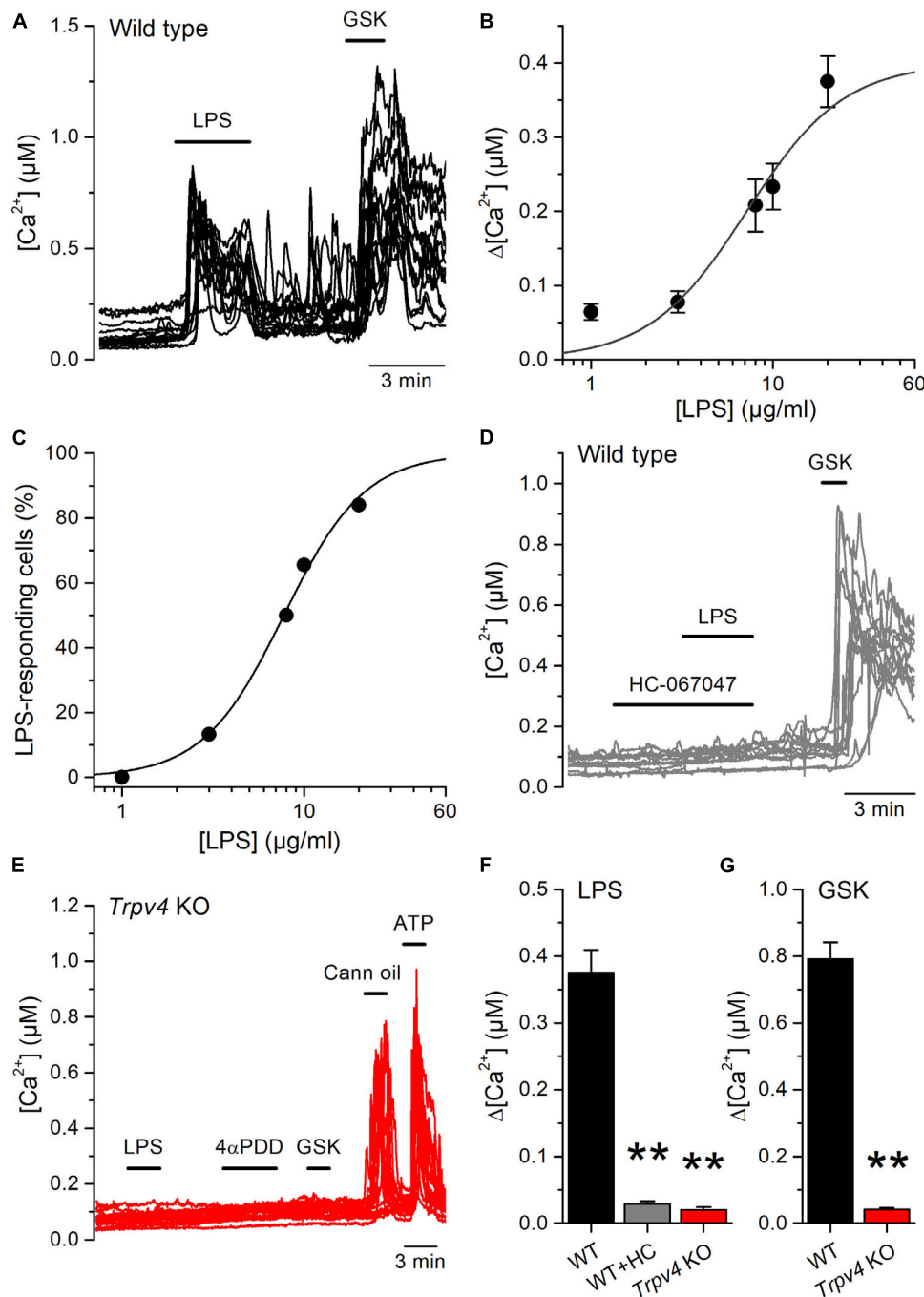
We next tested the effects of LPS on freshly isolated mouse UC (mUCs), because this preparation was more readily available than human-derived cells, and the possibility to study cells from genetically modified animals. LPS triggered intracellular Ca<sup>2+</sup> responses in a subpopulation of mUCs derived from wild type (WT) animals. LPS (20 µg/ml) induced a fast and reversible increase in the intracellular Ca<sup>2+</sup> concentration in 78% (110 out of 141, average amplitude  $0.37 \pm 0.03$  µM) of mUCs responsive to the TRPV4 agonist GSK1016790A (10 nM; **Figure 2A**). The amplitude of these responses and the proportion of LPS-sensitive cells were concentration-dependent, with effective concentrations ( $EC_{50}$ ) of  $7.1 \pm 1.1$  and  $7.7 \pm 0.3$  µg/ml, respectively and Hill coefficients of  $1.6 \pm 0.4$  and  $1.9 \pm 0.2$ , respectively (**Figures 2B,C**). LPS largely failed to increase the intracellular Ca<sup>2+</sup> concentration in mUCs in the presence of the TRPV4 inhibitor HC-067047 (10 µM) (**Figures 2D,F**). mUCs harvested from *Trpv4*-deficient animals were also largely insensitive to LPS (**Figures 2E,F**). As expected, *Trpv4*-deficient mUCs were also unresponsive to the TRPV4 agonists GSK1016790A and 4αPDD (**Figures 2E,G**). To assess the possibility that the lack of TRPV4 results in a generalized loss of cellular responsiveness, we evaluated the activation of other Ca<sup>2+</sup>-permeable channels expressed in mUCs cells, namely TRPV2 (22) and purinergic receptors (23). Application of the TRPV2 activator cannabis oil or ATP induced acute and reversible increases in cytoplasmic Ca<sup>2+</sup> concentration (**Figure 2E**). Altogether, these results demonstrate that, as shown above in hUCs, TRPV4 mediates the LPS-induced acute increase of intracellular Ca<sup>2+</sup> concentration in mUCs.



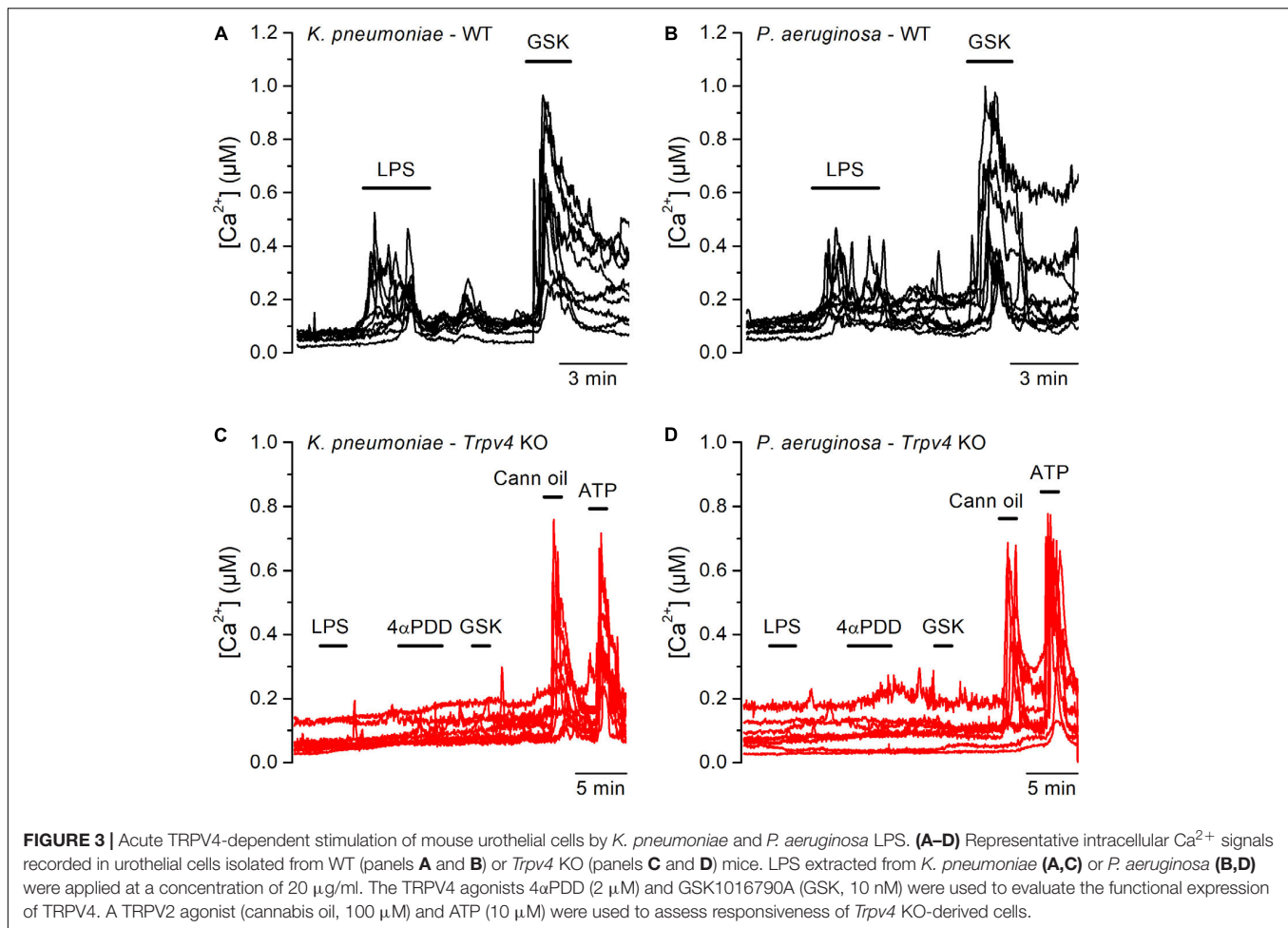
Although *E. coli* accounts for 75–90% of UTI, the bacterial spectrum differs in immunocompromised hosts (3). For instance, the opportunistic gram-negative bacteria *Klebsiella pneumoniae* and *Pseudomonas aeruginosa* are common causative agents during nosocomial UTI (2, 24). Thus, we tested whether also LPS from these bacterial strains are capable of activating TRPV4 in mUCs. We found that LPS (20  $\mu\text{g/ml}$ ) extracted from *K. pneumoniae* or *P. aeruginosa* induced robust increases in intracellular  $\text{Ca}^{2+}$  concentration in 80% (72 out of 90 mUCs) and 47% (42 out of 88 mUCs), respectively (**Figures 3A,B**). Although the amplitudes of the responses elicited by these two LPS were not significantly different from each other (*K. pneumoniae* LPS:  $0.14 \pm 0.01 \mu\text{M}$  ( $n = 72$ ), vs. *P. aeruginosa* LPS:  $0.12 \pm 0.02 \mu\text{M}$  ( $n = 42$ );  $P = 0.24$ , two-tailed unpaired  $t$  test), they were significantly smaller than the amplitude of the response evoked by *E. coli* LPS (*E. coli*:  $0.38 \pm 0.03 \mu\text{M}$  ( $n = 68$ );  $P < 0.0001$ , Tukey's multiple comparison test). LPS from *K. pneumoniae* and *P. aeruginosa* largely failed to increase the intracellular  $\text{Ca}^{2+}$  concentration in mUCs isolated from *Trpv4* KO mice

(**Figures 3C,D**), confirming that TRPV4 is necessary for acute responses to LPS.

Next, we tested whether the canonical immune receptor TLR4 contributes to the acute responses of mUCs to LPS. We found that 65% (99 out of 151) of the mUCs isolated from *Tlr4* KO mice exhibited an increase in intracellular  $\text{Ca}^{2+}$  concentration upon LPS application (**Figures 4A,C**). As found in WT cells, both the amplitude of the LPS-induced intracellular  $\text{Ca}^{2+}$  responses (**Figures 4B,C**) and the percentage of LPS-responding cells (1.3%; 2 out of 148) were significantly smaller in the presence of the TRPV4 inhibitor HC-067047, compared to untreated *Tlr4* KO mUCs ( $P < 0.001$ , Dunn's multiple comparison test and  $P < 0.0001$ , Fisher's exact test, respectively). Interestingly, *Tlr4*-deficient mUCs exhibited a lower fraction of responding cells (65%) and smaller amplitude of responses to LPS ( $0.27 \pm 0.01 \mu\text{M}$ ) in comparison to WT mUCs ( $P = 0.019$ , Fisher's exact test and  $P = 0.0008$ , two-tailed unpaired  $t$  test, respectively). Furthermore, we found that also the responses to GSK1016790A were significantly smaller in *Tlr4*-deficient cells (WT:  $0.79 \pm 0.05$



**FIGURE 2 |** Acute TRPV4-dependent stimulation of mouse urothelial cells by *E. coli* LPS. **(A)** Representative intracellular  $\text{Ca}^{2+}$  signals recorded in urothelial cells isolated from wild type mice, showing the responses to acute application of LPS (20  $\mu\text{g}/\text{ml}$ ) or GSK1016790A (GSK, 10 nM). **(B,C)** Concentration dependences of the amplitude (B) and percentage of occurrence (C) of LPS-evoked intracellular  $\text{Ca}^{2+}$  responses in TRPV4-expressing cells (responsive to GSK1016790A 10 nM). The solid lines represent the fits with Hill equations.  $n > 80$  cells per data point. **(D)** Representative intracellular  $\text{Ca}^{2+}$  signals recorded in WT MUCs to which LPS (20  $\mu\text{g}/\text{ml}$ ) was applied in the presence of the TRPV4 inhibitor HC-067047 (10  $\mu\text{M}$ ). GSK1016790A (GSK, 10 nM) was later perfused to assess functional expression of TRPV4. **(E)** Representative intracellular  $\text{Ca}^{2+}$  signals recorded in urothelial cells isolated from *Trpv4* KO mice. LPS was applied at a concentration of 20  $\mu\text{g}/\text{ml}$ . The TRPV4 agonists 4 $\alpha$ PDD (2  $\mu\text{M}$ ) and GSK1016790A (GSK, 10 nM) were used to evaluate the functional expression of TRPV4. A TRPV2 agonist (cannabis oil, 100  $\mu\text{M}$ ) and ATP (10  $\mu\text{M}$ ) were used to assess cell responsiveness. **(F,G)** Average amplitude of responses to LPS (20  $\mu\text{g}/\text{ml}$ ) (F) and GSK1016790A (10 nM) (G) in urothelial cells isolated from wild type (WT, black bars) and *Trpv4* KO (red bars) mice. HC, HC-067047 (10  $\mu\text{M}$ ). The \*\* symbols indicate  $P < 0.01$  with a Dunn's multiple comparison test.



$\mu\text{M}$  vs. *Tlr4* KO:  $0.49 \pm 0.02 \mu\text{M}$ ;  $P < 0.0001$ , two-tailed unpaired *t* test). These weaker TRPV4-mediated responses in *Tlr4* KO mUCs may be related to the lower expression levels of TRPV4, since comparative transcripts analysis showed significant lower expression of *Trpv4* (and *Trpv2*) in *Tlr4* KO than in WT mUCs (Figure 4D). Altogether, these findings confirm that TRPV4 is the main contributor to the fast increase in intracellular  $\text{Ca}^{2+}$  concentration induced by LPS in mUCs and demonstrate that the TLR4 signaling pathway is not critically required for LPS-induced activation of TRPV4.

### LPS-Induced Inflammatory Gene Expression Is Enhanced in *Trpv4*-Deficient Urothelial Cells

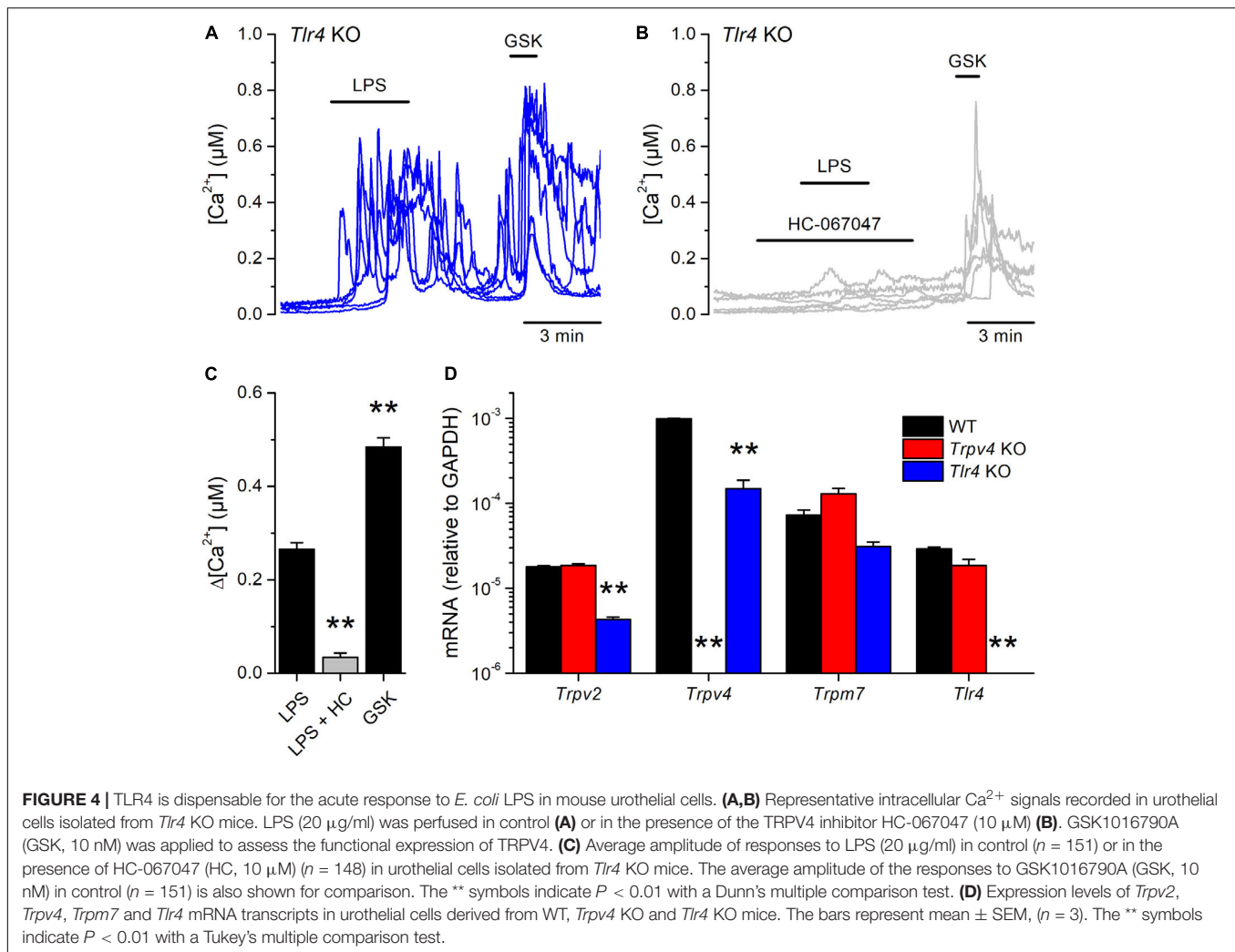
Lipopolysaccharides triggers an increase in intracellular  $\text{Ca}^{2+}$  concentration that leads to  $\text{Ca}^{2+}$ -dependent phosphorylation of NF- $\kappa\text{B}$ , inducing its nuclear translocation and a consequent increased production of proinflammatory cytokines in a line of human carcinoma bladder epithelial cells and in macrophages (10, 25). Thus, we sought to determine whether the TRPV4-mediated increase in intracellular  $\text{Ca}^{2+}$  induced by LPS triggers NF- $\kappa\text{B}$  translocation in mUCs. For this, we incubated these cells with LPS during 30 min and quantified the presence

of NF- $\kappa\text{B}$  in the nucleus. Untreated WT mUCs exhibited a scattered distribution of NF- $\kappa\text{B}$ , with similar expression in the nucleus and the cytoplasm, whereas LPS-treated cells displayed a significant increase in nuclear NF- $\kappa\text{B}$  and S534-phosphorylated p65 subunit (Figures 5A–C and Supplementary Figures 1, 2). *Trpv4*-deficient mUCs showed results similar to WT cells, but *Tlr4* KO mUCs appeared unresponsive to LPS (Figures 5A–C and Supplementary Figures 1, 2).

We also tested for the implication of TRPV4 in the regulation of the expression of pro-inflammatory cytokines. We found that the LPS challenge induced a significantly larger increase in *Il-6*, *Cxcl-1*, *Cxcl-2*, and *Tnf* transcript levels in TRPV4-deficient mUC than in WT mUC (Figure 6). Interestingly, LPS-treated *Tlr4* KO mUC did not display *Il-6* upregulation, but did show about 10-fold increased expression of *Cxcl-1*, *Cxcl-2*, and *Tnf* (Figure 6).

### TRPV4 Is Required for LPS-Induced Increase in Bladder Voiding Frequency

Finally, we determined whether intravesical infusion of LPS produces acute changes in the mouse bladder voiding reflex using cystometry *in vivo* (19). Given that ablation of TRPV4 induces a reduction of the voiding frequency in mice (21), we hypothesized



that LPS-induced activation of the channel may produce the opposite effect.

During infusion of saline solution at a rate of 20  $\mu\text{l}/\text{min}$  *Trpv4* KO mice displayed a basal voiding frequency that was significantly lower than that of WT animals (Figures 7A,B;  $P = 0.0011$ ), as previously reported (13, 26). Acute intravesical administration of LPS (200  $\mu\text{g}/\text{ml}$  in saline) via the infusion catheter induced an increase in the voiding frequency in WT ( $P = 8 \times 10^{-4}$ ), but not in *Trpv4*-deficient mice ( $P = 0.74$ ) (Figures 7A,C).

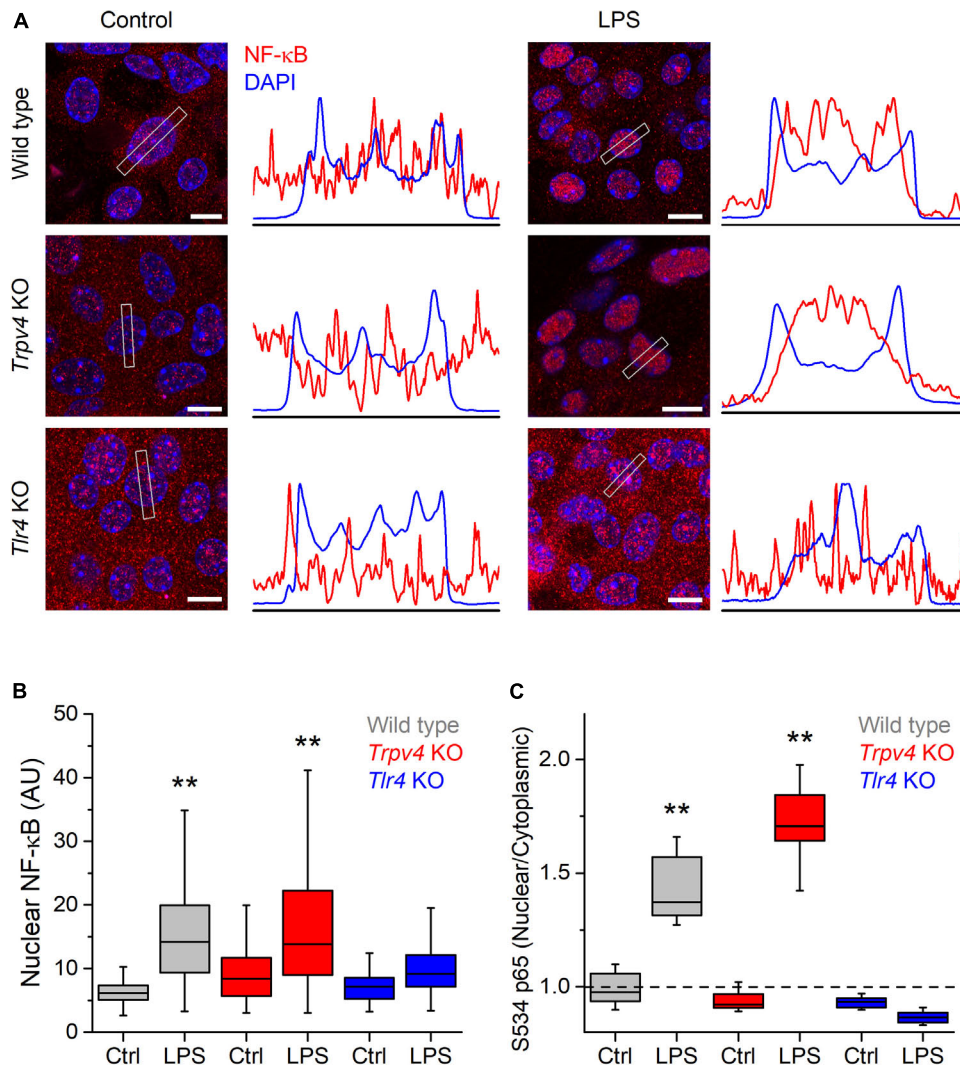
The lack of effect of LPS in the latter could be related to the lower rate of administration of this compound to the bladder, given the lower basal voiding frequency in these animals. To assess this possibility, we performed another series of experiments in WT mice using an intravesical infusion rate 8  $\mu\text{l}/\text{min}$  to adjust the basal voiding frequency in these animals to values closer to that of *Trpv4* KO mice (Figure 7B). In this condition, LPS increased the voiding frequency to levels similar to those found in WT animals at a perfusion rate of 20  $\mu\text{l}/\text{min}$  ( $P = 0.48$ ; Figure 7C). WT mice under pharmacological inhibition of TRPV4 by intraperitoneal administration of

HC-067047 (2.35 mg/kg) displayed a basal voiding frequency that was not different from that of control animals (Figure 7B;  $P = 0.18$ ). However, instillation of LPS did not result in changes in voiding frequency in HC-067047-treated mice ( $P = 0.58$ ; Figure 7C), which is consistent with the result obtained in *Trpv4* KO animals.

We also tested the implication of TLR4 in the voiding response by performing experiments in *Tlr4* KO mice. These animals displayed a basal voiding frequency and response to LPS that were not different from those of WT mice (Figures 7B,C). Finally, given its reported role in acute inflammation and pain responses to LPS (27), we assessed the implication of TRPA1. Mice deficient of this channel showed no difference in basal voiding frequency or response to LPS with respect to WT animals (Figures 7B,C).

## DISCUSSION

The quick defensive responses of cells lining the urinary tract and bladder wall are determinant in limiting further bacterial colonization and tissue damage. Of particular interest in this



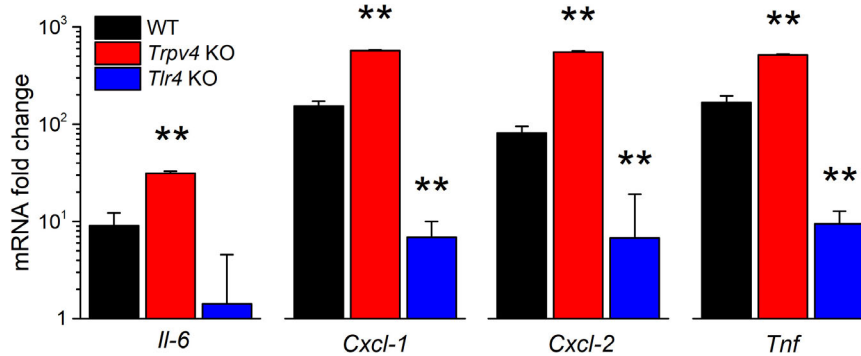
**FIGURE 5 |** TRPV4 is not required for the phosphorylation and nuclear translocation of NF- $\kappa$ B induced by *E. coli* LPS in mouse urothelial cells. **(A)** Representative confocal immunofluorescence microscopy images of fixed mUCs in control or 30 min after treatment with LPS (20  $\mu$ g/ml). Cells were stained with NF- $\kappa$ B p65 (red) and DAPI nuclear staining (blue). Scale bar, 10  $\mu$ m. The average linear intensity along the gray rectangle is represented next to each image. **(B)** Mean intensity of nuclear NF- $\kappa$ B p65 staining in mUCs in control or 30 min after treatment with LPS (20  $\mu$ g/ml, 30 min). The data is represented in a box plot indicating the median (black line), the 25–75 percentiles (box) and the 10–90 percentile range (whiskers). The \*\* symbols indicate  $P < 0.01$  and with a Tukey's multiple comparison test (the  $n$  values (control/LPS) are 53/100 for WT, 96/92 for *Trpv4* KO and 88/103 for *Tlr4* KO). **(C)** Average nuclear/cytoplasmic ratio of S534 p65 subunit in mUCs in control or 30 min after treatment with LPS (20  $\mu$ g/ml, 30 min). The data is represented in a box plot indicating the median (black line), the 25–75 percentiles (box) and the 10–90 percentile range (whiskers). The \*\* symbols indicate  $P < 0.01$ , with a Tukey's multiple comparison test. At least eight randomly selected images were analyzed per conditions from three independent experiments.

regard are the fast increases in intracellular  $\text{Ca}^{2+}$  concentration and in proinflammatory gene expression induced by acute LPS application that were reported in a carcinoma human bladder epithelium cell line (10). In this study we found that fast LPS-induced  $\text{Ca}^{2+}$  responses are present also in primary cultured UCs isolated from human and mouse bladder samples, and obtained pharmacologic and genetic evidence indicating that TRPV4 activation is a necessary factor for this effect in both cell types.

Of note, we found that mUCs express mRNA of TRPV2 and TRPM7, two channels that were reported to mediate  $\text{Ca}^{2+}$  influx required for TLR4-dependent cytokine production in

macrophages (25, 28). However, these channels do not play a critical role in the generation of the fast  $\text{Ca}^{2+}$  responses to LPS in mUCs, because these cells fail to respond when TRPV4 function is ablated. The activation of TRPM7 by LPS in macrophages occurs through interaction with the adaptor protein CD14, which facilitates the inclusion of this channel in the TLR4-MD2-CD14 complex (25). This mechanism is unlikely to operate in UCs since they lack expression of CD14 (29). Regarding TRPV2, we have previously reported that this channel is larger insensitive to LPS (30), and therefore is not expected to contribute to LPS-induced  $\text{Ca}^{2+}$  responses. Importantly, our data in *Tlr4* KO mUCs





**FIGURE 6 |** Differential regulation of LPS-induced cytokine gene expression by TRPV4 and TLR4 in mUCs. Fold change of the expression levels of pro-inflammatory genes in urothelial cells derived from WT, *Trpv4* KO and *Tlr4* KO mice and treated with *E. coli* LPS (20  $\mu$ g/ml, 30 min). The data is presented as mean  $\pm$  SEM. of the expression levels relative to the respective values obtained in the untreated condition ( $n = 3$ ). The \*\* symbols indicate  $P < 0.01$ , with a Tukey's multiple comparison test.

demonstrate that this receptor is not critical for LPS-induced activation of TRPV4. These conclusions fall in line with our previous observations in airway epithelial cells (12), suggesting for a general role of TRPV4 as LPS effector in epithelial cells.

Another feature that recapitulates what was found in airway epithelial cells (12) is that LPS elicits intracellular  $Ca^{2+}$  responses only in a fraction of UCs responding to the potent TRPV4 agonist GSK1016790A. This is probably due to the fact that LPS is a weaker channel agonist (31). The apparent effective stimulatory concentration of LPS on TRPV4 in mUCs we report here ( $\sim 7$   $\mu$ g/ml) is very similar to that previously found in airway epithelial cells (11  $\mu$ g/ml) (12). These values are in the same range as that reported for the broadly tuned chemosensory channel TRPA1 (32) ( $\sim 3$   $\mu$ g/ml) (27), and lower than for the other sensory TRP channels, TRPV1, TRPV2, TRPM3, and TRPM8 (30). This confirms TRPA1 and TRPV4 as the most sensitive to LPS of the sensory TRP channels studied so far in this respect.

The effect of endotoxins on intracellular  $Ca^{2+}$  levels in mUCs and the implication of TRPV4 were confirmed for LPS extracted from *K. pneumoniae* and *P. aeruginosa*, which are two of the most frequent bacterial strains associated with the presence of indwelling urinary catheters (33). The weaker action of LPS from these strains compared to that of *E. coli*-derived LPS in activating TRPV4 is reminiscent of the stronger agonist effect of *E. coli* in TRPA1 (27). The molecular mechanism underlying TRPV4 activation by LPS remains to be fully clarified. However, because of the widely reported mechanosensitivity of this channel (34–36), we hypothesize that it could be similar as that operating in TRPA1, i.e., via the detection of LPS-induced mechanical perturbations in the plasma membrane (27, 37–39).

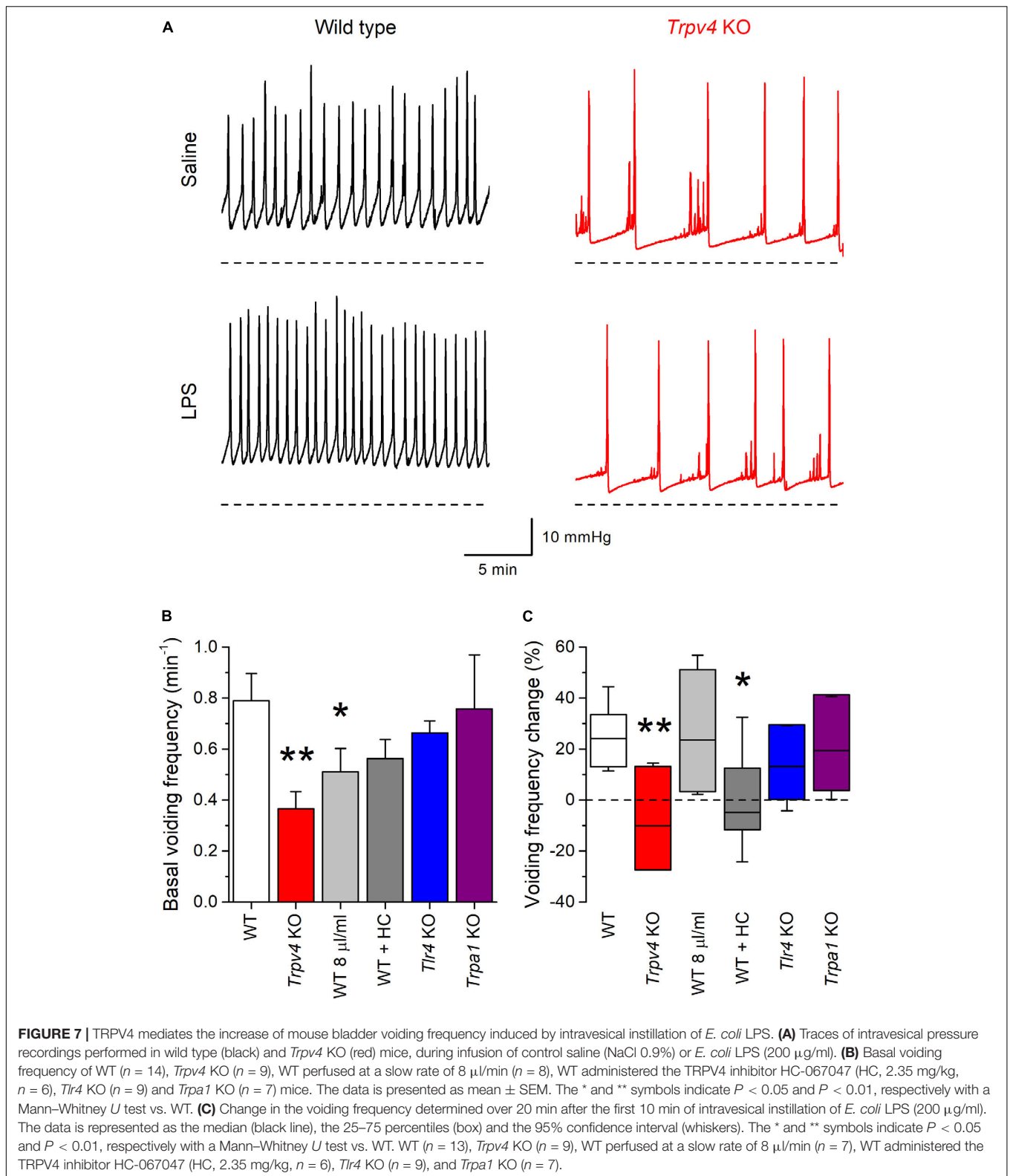
Our results show that TRPV4 activation does not influence the level of TLR4-dependent phosphorylation of NF- $\kappa$ B nor its translocation to the nucleus observed after 30 min stimulation with LPS. On the other hand, TRPV4-deficient cells displayed enhanced LPS-induced gene expression of the proinflammatory cytokines *Il-6*, *Cxcl-1*, *Cxcl-2*, *Tnf*, irrespective of whether this depended fully or not on TLR4 activation. The fact that this was also observed for *Il-6* and *Cxcl-1*, although not for *Cxcl-2*,

in mouse tracheobronchial cells, suggests that the increase in  $Ca^{2+}/Na^{+}$  and/or the depolarization resulting from TRPV4 activation can have a negative regulatory action on LPS-induced gene expression of some proinflammatory cytokines in epithelial cells. The elucidation of the mechanism underlying this regulation requires further investigation.

The effects of luminal LPS in the urinary bladder are not restricted to long-term histological inflammatory changes in the bladder wall, but also to an immediate increase in voiding frequency (11). Our cystometry experiments demonstrate that TRPV4 is a key mediator of the LPS-induced acute increase in voiding frequency. Notably, these effects are already established within minutes of LPS installation, a time-frame in which histological inflammatory changes are not seen yet (6). The rapidity of these events is likely linked to the activation of sensory fibers densely innervating the bladder wall. However, the full abrogation of changes in voiding frequency in *Trpv4* KO mice excludes the direct interaction of LPS with TRPA1 (27) in sensory afferents as the trigger for changes in voiding pattern. Instead, TRPV4 activation may lead to the release of  $H_2O_2$  (40), a known activator of TRPA1 (41, 42). However, the lack of difference in the voiding response to intravesical LPS administration between *Trpa1* KO and WT animals indicates that TRPA1 channels are not implicated. Alternatively, the activation of TRPV4 in UCs by LPS may induce the release of ATP (13, 36, 43), triggering afferent pathways through activation of purinergic receptors (13).

Altogether, our results suggest that UCs can recognize bacterial colonization through TRPV4 activation by LPS. The increase in voiding frequency induced by LPS may explain the strong urge to void frequently during cystitis, even immediately after the bladder is emptied. Together with UCs exfoliation during cystitis (44, 45), the increased flushing activity mediated by TRPV4 may contribute to the elimination of the pathogen from the bladder lumen.

In more general terms, our present findings further support the notion that TRP channels may function as sensors of bacterial endotoxins, playing crucial roles in the timely detection of



invading gram-negative bacteria (38). Importantly, they indicate that the pharmacological inhibition of TRPV4, which has been suggested for the treatment of several airway diseases (46–48), as

well as of cyclophosphamide-induced cystitis (21), may lead to undesirably decreased defensive responses of the bladder against rather common bacterial infections.

## DATA AVAILABILITY STATEMENT

The datasets generated for this study are available on request to the first and corresponding authors.

## ETHICS STATEMENT

The animal study was reviewed and approved by the KU Leuven Ethics Committee.

## AUTHOR CONTRIBUTIONS

YA and KT conceived and designed the project, and wrote the manuscript. JF and YA isolated and cultured the human urothelial cells. YA conducted and analyzed the Ca<sup>2+</sup> imaging experiments. RN and YA performed the confocal imaging and quantitative RT-PCR. PU, SP, and YA designed and conducted the cystometry recordings. AS contributed to the data analyses. DD, TG, WE, and TV contributed to the interpretation of data. All authors edited the manuscript.

## FUNDING

This work was supported by grants from the Belgian Federal Government (IUAP P7/13), the Research Foundation-Flanders (Grants G.0565.07, G.0686.09, and G.A022.11N), and the Research Council of the KU Leuven (Grants GOA 2009/07, EF/95/010, and PFV/10/006).

## REFERENCES

- Johnson JR. Virulence factors in *Escherichia coli* urinary tract infection. *Clin Microbiol Rev.* (1991) 4:80–128. doi: 10.1128/cmr.4.1.80
- Salvatore S, Salvatore S, Cattoni E, Siesto G, Serati M, Sorice P, et al. Urinary tract infections in women. *Eur J Obstet Gynecol Reprod Biol.* (2011) 156:131–6. doi: 10.1016/j.ejogrb.2011.01.028
- Weichhart T, Haidinger M, Horl WH, Saemann MD. Current concepts of molecular defence mechanisms operative during urinary tract infection. *Eur J Clin Invest.* (2008) 38(Suppl. 2):29–38. doi: 10.1111/j.1365-2362.2008.02006.x
- Kawai T, Akira S. TLR Signaling. *Cell Death Differ.* (2006) 13:816–25. doi: 10.1038/sj.cdd.4401850
- Bjorling DE, Jerde TJ, Zine MJ, Busser BW, Saban MR, Saban R. Mast cells mediate the severity of experimental cystitis in mice. *J Urol.* (1999) 162:231–6. doi: 10.1097/00005392-199907000-00073
- Gonzalez RR, Fong T, Belmar N, Saban M, Felsen D, Te A. Modulating bladder neuro-inflammation: RDP58, a novel anti-inflammatory peptide, decreases inflammation and nerve growth factor production in experimental cystitis. *J Urol.* (2005) 173:630–4. doi: 10.1097/01.ju.0000143192.68223.f7
- Jerde TJ, Bjorling DE, Steinberg H, Warner T, Saban R. Determination of mouse bladder inflammatory response to *E. coli* lipopolysaccharide. *Urol Res.* (2000) 28:269–73. doi: 10.1007/s002400001114
- Saban MR, Saban R, Hammond TG, Haak-Frendscho M, Steinberg H, Tengowski MW, et al. Peptide communication in experimental cystitis. *Am J Physiol Renal Physiol.* (2002) 282:F202–10. doi: 10.1152/ajprenal.0163.2001
- Moore EE, Jackson SL, Boyko EJ, Scholes D, Fihn SD. Urinary incontinence and urinary tract infection: temporal relationships in postmenopausal women. *Obstet Gynecol.* (2008) 111:317–23. doi: 10.1097/AOG.0b013e318160d64a

## ACKNOWLEDGMENTS

We thank Melissa Benoit for the maintenance of the cell cultures and Evy van den Broek for the breeding and maintenance of genetically modified mice included in this work. We thank the Cell and Tissue Imaging Cluster (CIC), supported by Hercules AKUL/15/37\_GOH1816N and FWO G.0929.15 to Prof. Pieter Vanden Berghe, KU Leuven. We are grateful to Bernd Nilius and all members of the Laboratory of Ion Channel Research for helpful discussions. YA held a Postdoctoral Mandate of the KU Leuven and is currently a Postdoctoral Fellow of the Fund for Scientific Research Flanders (FWO).

## SUPPLEMENTARY MATERIAL

The Supplementary Material for this article can be found online at: <https://www.frontiersin.org/articles/10.3389/fimmu.2020.00799/full#supplementary-material>

**FIGURE S1** | TRPV4 is not required for the LPS-induced nuclear translocation of the p65 subunit of NF- $\kappa$ B in mouse urothelial cells. Single-color confocal images of NF- $\kappa$ B p65 (red) and DAPI nuclear staining (blue). The corresponding merged images are shown in **Figure 5A**. Scale bar, 10  $\mu$ m.

**FIGURE S2** | TRPV4 is not required for the LPS-induced phosphorylation of S534 p65 subunit of NF- $\kappa$ B in mouse urothelial cells. Representative confocal immunofluorescence microscopy images of fixed mUCs in control or 30 min after treatment with LPS (20  $\mu$ g/ml). Cells were stained with phospho p65 NF- $\kappa$ B (red) and DAPI nuclear staining (blue). Scale bar, 10  $\mu$ m. The histograms show the corresponding pixel intensity distribution (8-bit scale) of phospho p65 NF- $\kappa$ B staining in the cytoplasmic area (gray-shaded bars) or within the nuclear area (blue bars). Ratios represented in **Figure 5C** were calculated using the mean intensity values from the pixel intensity distribution in these two areas.

- Song J, Duncan MJ, Li G, Chan C, Grady R, Stapleton A, et al. A novel TLR4-mediated signaling pathway leading to IL-6 responses in human bladder epithelial cells. *PLoS Pathog.* (2007) 3:e60. doi: 10.1371/journal.ppat.0030060
- Takezawa K, Kondo M, Kiuchi H, Soda T, Takao T, Miyagawa Y, et al. Combination of bladder ultrasonography and novel cystometry method in mice reveals rapid decrease in bladder capacity and compliance in LPS-induced cystitis. *Am J Physiol Renal Physiol.* (2014) 307:F234–41. doi: 10.1152/ajprenal.00043.2014
- Alpizar YA, Boonen B, Sanchez A, Jung C, Lopez-Requena A, Naert R, et al. TRPV4 activation triggers protective responses to bacterial lipopolysaccharides in airway epithelial cells. *Nat Commun.* (2017) 8:1059. doi: 10.1038/s41467-017-01201-3
- Gevaert T, Vriens J, Segal A, Everaerts W, Roskams T, Talavera K, et al. Deletion of the transient receptor potential cation channel TRPV4 impairs murine bladder voiding. *J Clin Invest.* (2007) 117:3453–62. doi: 10.1172/JCI31766
- Thorneloe KS, Sulpizio AC, Lin Z, Figueroa DJ, Clouse AK, McCafferty GP, et al. N-((1S)-1-[[4-((2S)-2-[[2,4-dichlorophenyl)sulfonyl]amino]-3-hydroxypropanoyl]-1-piperazinyl]carbonyl]-3-methylbutyl)-1-benzothiophene-2-carboxamide (GSK1016790A), a novel and potent transient receptor potential vanilloid 4 channel agonist induces urinary bladder contraction and hyperactivity: Part I. *J Pharmacol Exp Ther.* (2008) 326:432–42. doi: 10.1124/jpet.108.139295
- Truschel ST, Ruiz WG, Shulman T, Pilewski J, Sun TT, Zeidel ML, et al. Primary uroepithelial cultures. A model system to analyze umbrella cell barrier function. *J Biol Chem.* (1999) 274:15020–9. doi: 10.1074/jbc.274.21.15020
- Southgate J, Masters J, Trejdosiewicz L. Culture of human urothelium. In: Freshney R, Freshney M editors. *Culture of Epithelial Cells*. New York: John Wiley & Sons, Inc (2002).

17. Schindelin J, Arganda-Carreras I, Frise E, Kaynig V, Longair M, Pietzsch T, et al. Fiji: an open-source platform for biological-image analysis. *Nat Methods*. (2012) 9:676–82. doi: 10.1038/nmeth.2019
18. Noursadeghi M, Tsang J, Hausteijn T, Miller RF, Chain BM, Katz DR. Quantitative imaging assay for NF-kappaB nuclear translocation in primary human macrophages. *J Immunol Methods*. (2008) 329:194–200. doi: 10.1016/j.jim.2007.10.015
19. Uvin P, Everaerts W, Pinto S, Alpizar YA, Boudes M, Gevaert T, et al. The use of cystometry in small rodents: a study of bladder chemosensation. *J Vis Exp*. (2012) 21:e3869. doi: 10.3791/3869
20. Prywer J, Torzewska A. Aggregation of poorly crystalline and amorphous components of infectious urinary stones is mediated by bacterial lipopolysaccharide. *Sci Rep*. (2019) 9:17061. doi: 10.1038/s41598-019-53359-z
21. Everaerts W, Zhen X, Ghosh D, Vriens J, Gevaert T, Gilbert JP, et al. Inhibition of the cation channel TRPV4 improves bladder function in mice and rats with cyclophosphamide-induced cystitis. *Proc Natl Acad Sci USA*. (2010) 107:19084–9. doi: 10.1073/pnas.1005333107
22. Shabir S, Cross W, Kirkwood LA, Pearson JF, Appleby PA, Walker D, et al. Functional expression of purinergic P2 receptors and transient receptor potential channels by the human urothelium. *Am J Physiol Renal Physiol*. (2013) 305:F396–406. doi: 10.1152/ajprenal.00127.2013
23. Chess-Williams R, Sellers DJ, Brierley SM, Grundy D, Grundy L. Purinergic receptor mediated calcium signalling in urothelial cells. *Sci Rep*. (2019) 9:16101. doi: 10.1038/s41598-019-52531-9
24. Bagshaw SM, Laupland KB. Epidemiology of intensive care unit-acquired urinary tract infections. *Curr Opin Infect Dis*. (2006) 19:67–71. doi: 10.1097/01.qco.0000200292.37909.e0
25. Schappe MS, Szteyn K, Stremeska ME, Mendu SK, Downs TK, Seegren PV, et al. Chanzyme TRPM7 mediates the Ca(2+) influx essential for lipopolysaccharide-induced toll-like receptor 4 endocytosis and macrophage activation. *Immunity*. (2018) 48:59–74e5. doi: 10.1016/j.immuni.2017.11.026
26. Everaerts W, Nilius B, Owsianik G. The vanilloid transient receptor potential channel TRPV4: from structure to disease. *Prog Biophys Mol Biol*. (2010) 103:2–17. doi: 10.1016/j.pbiomolbio.2009.10.002
27. Meseguer V, Alpizar YA, Luis E, Tajada S, Denlinger B, Fajardo O, et al. TRPA1 channels mediate acute neurogenic inflammation and pain produced by bacterial endotoxins. *Nat Commun*. (2014) 5:3125. doi: 10.1038/ncomms4125
28. Yamashiro K, Sasano T, Tojo K, Namekata I, Kurokawa J, Sawada N, et al. Role of transient receptor potential vanilloid 2 in LPS-induced cytokine production in macrophages. *Biochem Biophys Res Commun*. (2010) 398:284–9. doi: 10.1016/j.bbrc.2010.06.082
29. Smith NJ, Varley CL, Eardley I, Feather S, Trejdosiewicz LK, Southgate J. Toll-like receptor responses of normal human urothelial cells to bacterial flagellin and lipopolysaccharide. *J Urol*. (2011) 186:1084–92. doi: 10.1016/j.juro.2011.04.112
30. Boonen B, Alpizar YA, Sanchez A, Lopez-Requena A, Voets T, Talavera K. Differential effects of lipopolysaccharide on mouse sensory TRP channels. *Cell Calcium*. (2018) 73:72–81. doi: 10.1016/j.ceca.2018.04.004
31. Alpizar YA, Sanchez A, Radwan A, Radwan I, Voets T, Talavera K. Lack of correlation between the amplitudes of TRP channel-mediated responses to weak and strong stimuli in intracellular Ca(2+) imaging experiments. *Cell Calcium*. (2013) 54:362–74. doi: 10.1016/j.ceca.2013.08.005
32. Talavera K, Startek JB, Alvarez-Collazo J, Boonen B, Alpizar YA, Sanchez A, et al. Mammalian transient receptor potential TRPA1 channels: from structure to disease. *Physiol Rev*. (2019) 100:725–803. doi: 10.1152/physrev.00005.2019
33. Murphy CN, Clegg S. *Klebsiella pneumoniae* and type 3 fimbriae: nosocomial infection, regulation and biofilm formation. *Future Microbiol*. (2012) 7:991–1002. doi: 10.2217/fmb.12.74
34. Liedtke W. TRPV4 plays an evolutionary conserved role in the transduction of osmotic and mechanical stimuli in live animals. *J Physiol*. (2005) 567:53–8. doi: 10.1113/jphysiol.2005.088963
35. Liedtke W, Choe Y, Marti-Renom MA, Bell AM, Denis CS, Sali A, et al. Vanilloid receptor-related osmotically activated channel (VR-OAC), a candidate vertebrate osmoreceptor. *Cell*. (2000) 103:525–35. doi: 10.1016/s0092-8674(00)00143-4
36. Mochizuki T, Sokabe T, Araki I, Fujishita K, Shibasaki K, Uchida K, et al. The TRPV4 cation channel mediates stretch-evoked Ca<sup>2+</sup> influx and ATP release in primary urothelial cell cultures. *J Biol Chem*. (2009) 284:21257–64. doi: 10.1074/jbc.M109.020206
37. Startek JB, Talavera K, Voets T, Alpizar YA. Differential interactions of bacterial lipopolysaccharides with lipid membranes: implications for TRPA1-mediated chemosensation. *Sci Rep*. (2018) 8:12010. doi: 10.1038/s41598-018-30534-2
38. Boonen B, Alpizar YA, Meseguer VM, Talavera K. TRP channels as sensors of bacterial endotoxins. *Toxins (Basel)*. (2018) 10:E326. doi: 10.3390/toxins10080326
39. Startek JB, Boonen B, Talavera K, Meseguer V. TRP channels as sensors of chemically-induced changes in cell membrane mechanical properties. *Int J Mol Sci*. (2019) 20:371. doi: 10.3390/ijms20020371
40. Donko A, Ruisanchez E, Orient A, Enyedi B, Kapui R, Peterfi Z, et al. Urothelial cells produce hydrogen peroxide through the activation of Duox1. *Free Radic Biol Med*. (2010) 49:2040–8. doi: 10.1016/j.freeradbiomed.2010.09.027
41. Andersson DA, Gentry C, Moss S, Bevan S. Transient receptor potential A1 is a sensory receptor for multiple products of oxidative stress. *J Neurosci*. (2008) 28:2485–94. doi: 10.1523/JNEUROSCI.5369-07.2008
42. Sawada Y, Hosokawa H, Matsumura K, Kobayashi S. Activation of transient receptor potential ankyrin 1 by hydrogen peroxide. *Eur J Neurosci*. (2008) 27:1131–42. doi: 10.1111/j.1460-9568.2008.06093.x
43. Beckel JM, Daugherty SL, Tyagi P, Wolf-Johnston AS, Birder LA, Mitchell CH, et al. Pannexin 1 channels mediate the release of ATP into the lumen of the rat urinary bladder. *J Physiol*. (2015) 593:1857–71. doi: 10.1113/jphysiol.2014.283119
44. Song J, Bishop BL, Li G, Grady R, Stapleton A, Abraham SN. TLR4-mediated expulsion of bacteria from infected bladder epithelial cells. *Proc Natl Acad Sci USA*. (2009) 106:14966–71. doi: 10.1073/pnas.0900527106
45. Mulvey MA, Schilling JD, Martinez JJ, Hultgren SJ. Bad bugs and beleaguered bladders: interplay between uropathogenic *Escherichia coli* and innate host defenses. *Proc Natl Acad Sci USA*. (2000) 97:8829–35. doi: 10.1073/pnas.97.16.8829
46. Grace MS, Baxter M, Dubuis E, Birrell MA, Belvisi MG. Transient receptor potential (TRP) channels in the airway: role in airway disease. *Br J Pharmacol*. (2014) 171:2593–607. doi: 10.1111/bph.12538
47. Bonvini SJ, Birrell MA, Smith JA, Belvisi MG. Targeting TRP channels for chronic cough: from bench to bedside. *Naunyn Schmiedebergs Arch Pharmacol*. (2015) 388:401–20. doi: 10.1007/s00210-014-1082-1
48. Goldenberg NM, Ravindran K, Kuebler WM. TRPV4: physiological role and therapeutic potential in respiratory diseases. *Naunyn Schmiedebergs Arch Pharmacol*. (2015) 388:421–36. doi: 10.1007/s00210-014-1058-1

**Conflict of Interest:** The authors declare that the research was conducted in the absence of any commercial or financial relationships that could be construed as a potential conflict of interest.

Copyright © 2020 Alpizar, Uvin, Naert, Franken, Pinto, Sanchez, Gevaert, Everaerts, Voets, De Ridder and Talavera. This is an open-access article distributed under the terms of the Creative Commons Attribution License (CC BY). The use, distribution or reproduction in other forums is permitted, provided the original author(s) and the copyright owner(s) are credited and that the original publication in this journal is cited, in accordance with accepted academic practice. No use, distribution or reproduction is permitted which does not comply with these terms.