



Tribody [(HER2)₂xCD16] Is More Effective Than Trastuzumab in Enhancing $\gamma\delta$ T Cell and Natural Killer Cell Cytotoxicity Against HER2-Expressing Cancer Cells

OPEN ACCESS

Edited by:

Francesco Dieli,
Università degli Studi di
Palermo, Italy

Reviewed by:

Kent Gustafsson,
University College London,
United Kingdom
Jean Jacques Fournie,
ERL5294 Centre de
Recherches en Cancérologie
de Toulouse, France
Elena Lo Presti,
Università degli Studi
di Palermo, Italy

***Correspondence:**

Daniela Wesch
daniela.wesch@uksh.de

[†]Shared first authorship.

[‡]Shared senior authorship.

Specialty section:

This article was submitted
to T Cell Biology,
a section of the journal
Frontiers in Immunology

Received: 10 January 2018

Accepted: 04 April 2018

Published: 19 April 2018

Citation:

Oberg HH, Kellner C, Gonnermann D,
Sebens S, Bauerschlag D,
Gramatzki M, Kabelitz D, Peipp M
and Wesch D (2018) Tribody
[(HER2)₂xCD16] Is More Effective
Than Trastuzumab in Enhancing
 $\gamma\delta$ T Cell and Natural Killer Cell
Cytotoxicity Against HER2-
Expressing Cancer Cells.
Front. Immunol. 9:814.
doi: 10.3389/fimmu.2018.00814

Hans H. Oberg^{1†}, Christian Kellner^{2†}, Daniel Gonnermann¹, Susanne Sebens³, Dirk Bauerschlag⁴, Martin Gramatzki², Dieter Kabelitz¹, Matthias Peipp^{2‡} and Daniela Wesch^{1*‡}

¹Institute of Immunology, University Hospital Schleswig-Holstein (UKSH), Christian-Albrechts University (CAU) of Kiel, Kiel, Germany, ²Division of Stem Cell Transplantation and Immunotherapy, Department of Medicine II, University Hospital Schleswig-Holstein (UKSH), Christian-Albrechts University (CAU) of Kiel, Kiel, Germany, ³Institute for Experimental Cancer Research, University Hospital Schleswig-Holstein (UKSH), Christian-Albrechts University (CAU) of Kiel, Kiel, Germany, ⁴Clinic of Gynecology and Obstetrics, University Hospital Schleswig-Holstein (UKSH), Christian-Albrechts University (CAU) of Kiel, Kiel, Germany

An enhanced expression of human epidermal growth factor receptor 2 (HER2, ErbB2) often occurs in an advanced stage of breast, ovarian, gastric or esophageal cancer, and pancreatic ductal adenocarcinoma (PDAC). Commonly, HER2 expression is associated with poor clinical outcome or chemoresistance in ovarian and breast cancer patients. Treatment with humanized anti-HER2 monoclonal antibodies, such as trastuzumab or pertuzumab, has improved the outcome of patients with HER2-positive metastatic gastric or breast cancer, but not all patients benefit. In this study, the bispecific antibody [(HER2)₂xCD16] in the tribody format was employed to re-direct CD16-expressing $\gamma\delta$ T lymphocytes as well as natural killer (NK) cells to the tumor-associated cell surface antigen HER2 to enhance their cytotoxic anti-tumor activity. Tribody [(HER2)₂xCD16] comprises two HER2-specific single chain fragment variable fused to a fragment antigen binding directed to the CD16 (Fc γ RIII) antigen expressed on $\gamma\delta$ T cells and NK cells. Our results revealed the superiority of tribody [(HER2)₂xCD16] compared to trastuzumab in triggering $\gamma\delta$ T cell and NK cell-mediated lysis of HER2-expressing tumor cells, such as PDAC, breast cancer, and autologous primary ovarian tumors. The increased efficacy of [(HER2)₂xCD16] can be explained by an enhanced degranulation of immune cells. Although CD16 expression was decreased on $\gamma\delta$ T cells in several PDAC patients and the number of tumor-infiltrating NK cells and $\gamma\delta$ T cells was impaired in ovarian cancer patients, [(HER2)₂xCD16] selectively enhanced cytotoxicity of cells from these patients. Here, unique anti-tumor properties of tribody [(HER2)₂xCD16] are identified which beyond addressing HER2 overexpressing solid tumors may allow to treat with similar immunoconstructs combined with the adoptive transfer of $\gamma\delta$ T cells and NK cells refractory hematological

malignancies. A major advantage of $\gamma\delta$ T cells and NK cells in the transplant situation of refractory hematological malignancies is given by their HLA-independent killing and a reduced graft-*versus*-host disease.

Keywords: human $\gamma\delta$ T cells, human natural killer cells, human epidermal growth factor receptor 2, trastuzumab, bispecific antibody, tribody, cancer, CD16

INTRODUCTION

The human epidermal growth factor receptor 2 [(HER2), ErbB2] stimulates tumor cell proliferation *via* the Ras-MAP-kinase pathway and its expression is often associated with an aggressive tumor phenotype, advanced stage diseases, and poor clinical outcome (1, 2). Since anti-HER2 therapies are successful for the treatment of HER2-expressing tumors, HER2 is often selected as a tumor target antigen (3). HER2 expression in cardiomyocytes does not exclude an anti-HER2 therapy when the cardiac function in patients receiving anti-HER2 therapy is closely monitored. A dysfunction of cardiomyocytes, which is induced in 4% of the cancer patients receiving anti-HER2 therapy, is reversible (4). However, several HER2-positive tumors are resistant against anti-HER2 therapy or develop a resistance often accompanied by loss of anti-HER2-directed Th1 immunity (5). In an attempt to optimize anti-HER2 therapies, the initial monotherapy with humanized anti-HER2 mAb trastuzumab (Herceptin[®], Genentech, South San Francisco, CA, USA) against metastatic gastric or breast cancer was gradually replaced by combination therapies with cytostatic agents (e.g., docetaxel, capecitabine, paclitaxel) and/or other anti-HER2 mAb (e.g., pertuzumab), and/or tyrosine kinase inhibitors (e.g., lapatinib) (2, 3, 6–12). Alternatively, the antibody-drug conjugate (ADC) trastuzumab emtansine (T-DM-1) consisting of the anti-HER2 mAb trastuzumab linked to the cytotoxic agent emtansine (DM-1), which enters and destroys the HER2-overexpressing cells by binding to tubulin, was successful in patients with advanced breast cancer (13, 14). Trastuzumab and pertuzumab induce antibody-dependent cell-mediated cytotoxicity (ADCC) and/or cell death of tumor cells by inhibition of HER2 signaling (15–17). ADCC is mediated by activating Fc γ -receptor (Fc γ R) bearing myeloid cells as well as by natural killer (NK) cells or $\gamma\delta$ T lymphocytes (10, 18–20). Regarding $\gamma\delta$ T cells, Capietto and colleagues recently reported that adoptive transfer of human V γ 9V δ 2-expressing $\gamma\delta$ T lymphocytes from healthy donors (HDs) together with trastuzumab reduced growth of HER2-expressing breast cancer tumors grafted into immunocompromised mice. In their study, $\gamma\delta$ T cells bound to mAb-labeled breast cancer tumors *via* Fc γ RIII (CD16) and thereby exerted ADCC (21).

Differential clinical responses toward therapeutic antibodies such as trastuzumab or rituximab related to polymorphisms in *FCGR1IA* and *FCGR1IIA* genes have promoted the development of Fc engineered antibodies, which improve cellular cytotoxicity

against tumors (16, 17, 22, 23). Besides, enhanced cytotoxicity was also obtained with bispecific antibodies (bsAb), which allow redirecting of distinct effector cell populations including T lymphocytes to the tumor-site (24). The development of bsAb recruiting T cells has been successfully introduced into clinical application for blinatumomab and catumaxomab for treatment of relapsed or refractory B-cell precursor acute lymphoblastic leukemia and malignant ascites, respectively (25–27). Targeting solid tumors with bsAb is more complex and is under investigation (28, 29). bsAb also offer the ability to selectively trigger a distinct activating Fc γ R with high affinity and allow recruitment of Fc γ R expressing effector cells. For example, bispecific [HER2xCD16] antibodies retargeting NK cells to tumors have proven efficacy (30–32).

$\gamma\delta$ T lymphocytes are attractive effector cells for bsAb based on their HLA-independent recognition of antigens, their capacity to present antigens to $\alpha\beta$ T cells and not to induce a severe graft-*versus*-host disease (33–36). Previously, we have shown the efficacy of bsAb, such as [HER2xCD3] and [(HER2)₂xV γ 9], which selectively target CD3- and/or V γ 9-expressing T cells to HER2-expressing pancreatic ductal adenocarcinoma (PDAC) cells. HER2 is overexpressed on tumor cells of patients with PDAC (37). In particular, [(HER2)₂xV γ 9] selectively enhanced the cytotoxicity of V γ 9-expressing T cells from PDAC patients *in vitro* by inducing the release of perforin and granzyme B as well as *in vivo* in xenograft models of PDAC upon transfer of human $\gamma\delta$ T cells (38). These data are of great interest because PDAC is an extremely aggressive disease with poor prognosis and limited therapeutic options due to the resistance of PDAC to chemotherapy (39). Similar to PDAC, ovarian cancer (OC) is also regarded as an aggressive malignancy with a characteristic immunosuppressive tumor microenvironment (40). Ultimate recurrence of (serous) OC after surgery is often associated with poor prognosis and resistance against chemotherapy (41). In this study, we focused on a bsAb in the tribody format, [(HER2)₂xCD16], to redirect CD16-expressing $\gamma\delta$ T cells in addition to NK cells to lyse HER2-expressing tumor cells. For this purpose, $\gamma\delta$ T cells and NK cells were used for cytotoxicity assays, and applied either as peripheral blood lymphocytes (PBL) or tumor-infiltrating lymphocytes (TIL), as purified cells isolated out of PBL or TIL (freshly isolated) or as short-term *in vitro* expanded cells (suitable for adoptive cell transfer). The potential of tribody [(HER2)₂xCD16] to enhance the cytotoxicity of these cells against allogeneic cancer cell lines and autologous primary OC cells was compared to the cytotoxic activity mediated by trastuzumab.

MATERIALS AND METHODS

Patient Cohorts

Leukocyte concentrates from healthy adult blood donors were obtained from the Department of Transfusion Medicine of

Abbreviations: BrHPP, bromohydrin-pyrophosphate; bsAb, bispecific antibodies; HD, healthy donors; HER2, human epidermal growth factor receptor 2; mAb, monoclonal antibodies; n-BP, nitrogen-containing bisphosphonates; OC, ovarian cancer; PAg, phosphorylated antigen; PBL, peripheral blood lymphocytes; pCR, pathological complete response; PDAC, pancreatic ductal adenocarcinoma; RTCA, real-time cell analyzer; TCR, T cell receptor; TIL, tumor-infiltrating lymphocytes.

the University Hospital Schleswig-Holstein (UKSH) in Kiel, Germany. Heparinized blood was drawn from healthy donors (HDs) of the Institute of Immunology [UKSH, Christian-Albrechts University (CAU)], whereas blood from patients was obtained from the Department of General and Thoracic Surgery or the Clinic of Gynecology and Obstetrics, both of the UKSH in Kiel. In accordance with the Declaration of Helsinki, written informed consent was obtained from all donors, and the research was approved by the relevant institutional review boards (ethic committee of the Medical Faculty of the CAU to Kiel, code number: D405/10, D403/14, D404/14). Twenty-four patients with histologically verified PDAC (10 females, age 67.2 ± 12.1 years; 14 males, age 66.6 ± 6.9 years, stage pT1-4, pN0-1, L0-1, V0-1Pn 0-1, R0-1) were enrolled. None of the patients had been treated with chemo- or radio-therapy prior to this investigation. Moreover, 20 patients (7 females, age 72.3 ± 6.5 years; 13 males, age 67.2 ± 7.5 years) with other (cancer) diseases were included as follows: 3x papillary carcinoma, pancreaticobiliary type, 3x (multi-cystic) serous cystadenoma of the pancreas, 3x neuroendocrine papilla carcinoma, 2x cholangiocarcinoma, 2x bile duct carcinoma, 2x gastrointestinal carcinoma, 1x tubular adenocarcinoma with high-grade epithelial dysplasia, 1x lymph nodes in the pancreatic head, 1x jejunum metastasis, 1x hepatocellular carcinoma, 1x B cell Non-Hodgkin lymphoma. For functional assays, one patient with advanced stage of breast cancer (age 55 years, stage IIIB, high grading) and one patient with OC (OC1, age 60, high-grade serous, stage IIIC) at first diagnosis shortly after surgery and before chemotherapy were additionally enrolled (code number: AZ A157/11, AZ B3277/10). From another OC patient (OC11, age 52, high-grade serous, stage IIIC) tumor material was obtained after exploratory laparotomy before chemotherapy and blood before and after neoadjuvant chemotherapy with carboplatin/paclitaxel (4x, q3w) plus bevacizumab administered at the second cycle. The adjuvant therapy was followed by three further cycles with carboplatin/paclitaxel (3x, q3w). For flow cytometric analysis, PBL and TIL of 15 patients with advanced OC [age 56 ± 13 years, FIGO-stage IB-IVB (serous or mucinous carcinomas)] were enrolled (AZ B3277/10).

Isolation and *In Vitro* Culture of Lymphocyte Populations

Peripheral blood lymphocytes were isolated from the leukocyte concentrates, from heparinized blood, or from EDTA blood by Ficoll-Hypaque (Biochrom, Berlin) density gradient centrifugation. To separate freshly isolated $\gamma\delta$ T cells or NK cells, negative selection kits [T cell receptor (TCR) $\gamma\delta^+$ T Cell Isolation Kit or NK cell Isolation Kit, Miltenyi Biotec, Bergisch Gladbach], according to the manufacturer's instructions were used.

To establish short-term $\gamma\delta$ T cell lines, PBL were cultured in RPMI 1640 supplemented with 2 mM L-glutamine, 25 mM Hepes, 100 U/mL penicillin, 100 μ g/mL streptomycin, 10% FCS (complete medium), and stimulated with their selective antigens 300 nM phosphorylated antigen (PAg) Bromohydrin-pyrophosphate [(BrHPP); kindly provided by Innate Pharma, Marseille, France] or 5 μ M of nitrogen-containing bisphosphonates (n-BP) zoledronic acid (Novartis, Basel, Switzerland).

50 U/mL rIL-2 (Novartis) was added every 2 days over a culture period of 14–21 days. After 2–3 weeks, most $\gamma\delta$ T cell lines had a purity of >95% V δ 2 $\gamma\delta$ T cells. $\gamma\delta$ T cells with a purity of <98% were labeled with anti-TCR $\alpha\beta$ mAb clone IP26 (Biolegend, San Diego, CA, USA) and subjected to magnetic separation in order to deplete remaining $\alpha\beta$ T cells. Magnetically depleted $\gamma\delta$ T cells as well as $\gamma\delta$ T cells of donors of whom we initially received only 1 mL blood with a low percentage of $\gamma\delta$ T cells were re-stimulated to ensure large-scale expansion of pure $\gamma\delta$ T cell lines as previously described (42, 43).

Separation of Tumor-Infiltrating Lymphocytes and Primary Tumor Cells

Tumors from patients with advanced OC removed during surgery were dissected in tumor tissues by the pathologist of the UKSH. Tumor tissue was washed in 10 cm dishes with PBS to remove blood debris. Subsequently, the tumor tissue was minced into approximately 1 mm³ pieces and digested in 5–10 mL PBS with enzymes A, K, and R of the Tumor Dissociation Kit (Miltenyi Biotec) for 1 h at 37°C. Digested cell suspension was then passed through a 100 μ m cell strainer (Falcon, BD Bioscience, Heidelberg), visually controlled by light microscopy and centrifuged at 481 g for 5 min. Cell pellet was resuspended in complete medium and cultured in 75 cm² culture flasks to establish primary tumor cell lines. TILs were isolated by Ficoll-Hypaque density gradient centrifugation. Polyploidy of primary tumor cells was analyzed by using the tricolor probe TERC (3q26)/MYC (8q24)/SE 7 TC (Kreatech/Leica, #KBI-10704) for fluorescence *in situ* hybridization (FISH) as previously described (44). Polyploidy was detected in 60–100% of cells in each investigated primary ovarian tumor sample which classified them together with a high expression of HER2 and epithelial cell adhesion molecule as cancer cells.

Tumor Cell Lines

Pancreatic ductal adenocarcinoma cell lines, such as PancTu-I, Panc1, and Panc89 were kindly provided by Dr. Christian Röder, Institute for Experimental Cancer Research UKSH/CAU, Kiel. PDAC cell lines, Burkitt lymphoma Raji cells (DSMZ, Braunschweig) as well as OC cell line SK-OV-3 or IGROV-1 and esophageal cell line OE33 (ATCC, Manassas, VA, USA) were cultured in complete medium. The genotype of tumor cell lines was recently confirmed by short tandem repeats analysis and mycoplasma negativity routinely once per month by RT-PCR. For removing adherent tumor cells from flasks, cells were treated with 0.05% trypsin/0.02% EDTA.

Generation of bsAb

The tribodies [(HER2)₂xCD16] (45), [(CD20)₂xCD16] (45), and [(HER2)₂xCD89] (unpublished) were expressed as published previously (45). Briefly, Lenti-X™ 293T-cells were co-transfected with corresponding expression vectors coding for light or heavy chain derivatives of the tribodies using the calcium phosphate technique including 5 mM chloroquine. Heterodimeric tribody molecules composed of a light chain and a heavy chain tagged with a C-terminal hexahistidine motif were purified from

supernatant by two successive steps of affinity chromatography using CaptureSelect Fab kappa affinity matrix (BAC B.V., Naarden, The Netherlands) and nickel-nitrilotriacetic acid agarose beads (Qiagen, Hilden, Germany) as described earlier (38, 45). Purity and integrity of bsAb were verified by capillary electrophoresis using an Experion™ Automated Electrophoresis System (Bio-Rad, München).

Flow Cytometry

Fluorochrome-labeled mAb were used for six-color surface staining as follows: anti-CD3 clone SK7, anti-TCR $\gamma\delta$ clone 11F2 (both from BD Biosciences), anti-TCR $\alpha\beta$ clone IP26 (Biolegend), anti-TCRV δ 2 clone Immu389 (Beckman Coulter, Krefeld), anti-TCRV δ 1 clone TS8.2 (Thermo Fisher Scientific, Schwerte), and anti-CD56 clone NCAM16.2 (BD Biosciences), and corresponding isotype controls (BD Biosciences or Biolegend). Fluorochrome-labeled mAb were used for three-color surface staining as follows: anti-TCR $\gamma\delta$ clone 11F2 (BD Biosciences), anti-TCRV δ 2 clone Immu389 (Beckman Coulter), and anti-CD16 clone B73.1 (BD Biosciences) or anti-CD3 clone SK7 (BD Biosciences) plus corresponding isotype controls (BD Biosciences or Biolegend). To analyze HER2 expression, we used 20 $\mu\text{g}/\text{mL}$ trastuzumab (Roche Pharma AG, Grenzach Wyhlen), and the corresponding humanized IgG control (20 $\mu\text{g}/\text{mL}$) followed by a second step staining with goat-anti-human *F(ab)*₂ (Medac, Hamburg). The binding properties of tribody [(HER2)₂xCD16] and tribody [(HER2)₂xCD89] as a control were analyzed by using HER2-positive tumor cells, CD16-expressing immune cells as well as antigen-negative cells as a control. Briefly, 3–5 $\times 10^5$ cells were incubated with or without purified bispecific antibody derivatives in wash buffer (1% BSA, 0.1% NaN₃ in PBS) for 30 min at 4°C. Cells were washed twice with washing buffer. After incubation with 10 $\mu\text{g}/\text{mL}$ anti-Penta-His™ Alexa Fluor® 488 labeled IgG at 4°C for 30 min, cells were washed and analyzed by a flow cytometer.

For intracellular staining of granzyme B, 5 $\times 10^5$ cells were washed with staining buffer, fixed and permeabilized with the Cytofix/Cytoperm kit (BD Biosciences). Thereafter, cells were washed twice with Perm/Wash by centrifugation and stained with PE-conjugated anti-granzyme B mAb clone GB11 (BD Biosciences) for 30 min, washed and measured.

All samples were analyzed on a FACS-Calibur or LSR-Fortessa flow cytometer (both from BD Biosciences) using CellQuestPro, Diva, or FlowJo software.

⁵¹Cr-Release Assay

Cytotoxicity against tumor cells was analyzed in a standard 4 h ⁵¹Cr-release assay with titrated numbers of $\gamma\delta$ T effector cells supplemented with 12.5 U/mL IL-2 as described elsewhere (38). To investigate possible increase of cytotoxic activity, cells were treated with 300 nM BrHPP, the indicated concentrations of trastuzumab, tribody [(HER2)₂xCD16], or tribody [(CD20)₂xCD16] as a control construct. Supernatants were measured in a Micro-Beta Trilux β -counter (Perkin Elmer). Specific lysis was calculated as $[(\text{cpm}_{\text{test}} - \text{cpm}_{\text{spontaneous}})/(\text{cpm}_{\text{max}} - \text{cpm}_{\text{spontaneous}})] \times 100$, where spontaneous release was determined in medium only and

maximal release in Triton-X-100-lysed target cells. Spontaneous release did not exceed 15% of the maximal release.

Real-Time Cell Analyzer (RTCA)

As an alternative assay to measure cytotoxicity against adherent cells a real-time cell analyzer (RTCA, xCELLigence, ACEA, San Diego, CA, USA) was used as described elsewhere (35, 43, 46). Briefly, 5,000–15,000 adherent tumor cells/well were added to 96-well micro-E-plate in complete medium to monitor the impedance of the cells *via* electronic sensors every 5 min for up to 24 h. The impedance of the cells is expressed as an arbitrary unit called cell index (CI) which reflects changes in cellular parameters such as morphological changes (e.g., spreading, adherence), cell proliferation, and cell death. Since the initial adherence in different wells can differ slightly, the CI was normalized to 1 after having reached the linear growth phase and before the addition of constructs, substances, or suspended cells. Then, trastuzumab or tribody [(HER2)₂xCD16] and corresponding control constructs were added in the previously titrated optimal concentrations. Thereafter, PBL, freshly isolated $\gamma\delta$ T cells or NK cells, or short-term activated $\gamma\delta$ T cells together with the indicated 12.5–50 U/mL IL-2 were added to the RTCA-single plate (SP) assay (xCELLigence). Where indicated, short-term activated V δ 2 $\gamma\delta$ T cells were stimulated with 300 nM BrHPP. When effector cells induced lysis of the tumor cells, the loss of impedance of tumor cells shown as decrease of the normalized CI was analyzed. As positive control for killing, tumor cells were treated with a final concentration of 1% Triton X-100. For the precise analysis of cytotoxicity, the cells were monitored every minute for the indicated time points.

CD107a-Degranulation Assay and ELISA

Twenty thousand PDAC cells in 96-well microtiter plates (Nunc, Wiesbaden) were cultured overnight. Medium or 1 $\mu\text{g}/\text{mL}$ [(HER2)₂xCD16] or control constructs with or without 300 nM BrHPP together with short-term activated $\gamma\delta$ T cells (E/T ratio: 12.5:1) supplemented with 12.5 U/mL rIL-2 were added after 24 h. For CD107a-assay, 10 μL FITC-labeled anti-human CD107a mAb clone H4A3 (50 $\mu\text{g}/\text{mL}$, Biolegend) was added directly, whereas 3 μM monensin was added 1 h after co-culturing the cells. After additional 3 h, $\gamma\delta$ T cells were stained with PE-labeled anti-TCR $\gamma\delta$ mAb, and analyzed by flow cytometry.

For assessment of granzyme B with ELISA, cell culture supernatants of duplicates were collected after 4 h and stored at –20°C until use. Human granzyme B was measured by a sensitive sandwich ELISA following the procedures outlined by the manufacturer (R&D System, Wiesbaden, Germany).

Statistical Analysis

The statistical analysis was assessed by Wilcoxon rank sum test or ANOVA using Graph Pad Prism (Graph Pad Software, Inc., La Jolla, CA, USA). Data from at least three independent biological replicates were used to test for normal distribution with the Shapiro–Wilk test (Graph pad Prism) followed by a parametrically *t* test using Microsoft Excel. All statistical tests were two-sided and the level of significance was set at 5%.

RESULTS

Differential Trastuzumab-Mediated Lysis of Cancer Cells

In this study, we asked whether the treatment of HER2-expressing PDAC cells or OC cells with trastuzumab in the absence or presence of patients' PBL can induce tumor cell lysis comparable to that of breast cancer cells. In order to analyze trastuzumab-mediated lysis of HER2-expressing cancer cells by inhibition of HER2 signaling after its homodimerization and ADCC-mediated lysis by FcγRIII (CD16)-expressing cells, such as NK cells or γδ T cells, we applied a RTCA-assay. The RTCA system allows monitoring of cytotoxic activity of a low number of innate and innate-like cells such as NK cells and γδ T cells within PBL, respectively, in real time without the incorporation of labels over time periods of several days. As shown in **Figure 1A**, the addition of trastuzumab alone induced a strong, but incomplete cell death of breast cancer cell line MCF-7 (**Figure 1A**), whereas there was almost no lysis of PDAC cell line PancTu-I and primary OC cells OC1 by trastuzumab. The co-culture of tumor cells with IL-2 stimulated allogeneic breast cancer, PDAC, or OC patients' PBL, respectively, in the absence of trastuzumab induced a delayed lysis of MCF-7 cells, a low lysis rate of PancTu-I cells and an obvious lysis of OC1 cells (**Figure 1A**) in comparison to the trastuzumab-mediated lysis suggesting an IL-2-mediated activation of PBL effector cells. PBL without IL-2 did not lyse these tumor cells (data not shown). The combination of trastuzumab and PBL enhanced lysis of all applied tumor cells (**Figure 1A**) compared to trastuzumab alone. This effect was more pronounced in MCF-7- and OC1-cells than in PancTu-I cells and other PDAC cells such as Panc1 co-cultured with allogeneic PBL from HDs (Figure S1A in Supplementary Material, upper figure). In contrast, the OC cell line SK-OV-3 or primary OC cells OC11, which highly expressed HER2 (Figure S1B in Supplementary Material), but not IGROV-1 cells (data not shown), were lysed very efficiently after co-culture with allogeneic PBL of HDs in the presence of IL-2 and trastuzumab suggesting a higher heterogeneity within OC cells (**Figure 1A**; Figure S1A in Supplementary Material). The differential intensity of lysis induced by trastuzumab alone was not due to a heterogenous HER2 expression as shown by similar staining patterns of the tumor cells with trastuzumab (**Figure 1B**; Figure S1B in Supplementary Material). Taken together, in the presence of patients' PBL trastuzumab induced lysis of HER2-expressing tumor cells but was unable to eradicate all target cells. In further experiments, we asked for possible reasons for this and strategies to further enhance cytotoxicity by cells of the innate and innate-like immunity.

Characterization of Immune Cells of Tumor Patients Which Can Be Engaged by Trastuzumab

Besides varying direct effects of trastuzumab on the different tumor cells, one possible additional explanation for the weak lysis of PDAC cell lines by PBL from cancer patients is our observation of a significantly decreased CD16 expression on Vδ2-positive γδ T cells within the PBL of PDAC patients (**Figure 2A**, right panel),

in contrast to TCR γδ-negative NK cells (**Figure 2A**, left panel), which was not present in age-matched HDs or patients with other different (cancer) diseases (shortly before surgery, listed in Section "Materials and Methods") (**Figure 2A**). Of note expression of other activating Fcγ receptors, i.e., Fcγ RI (CD64) and Fcγ RIIA (CD32A) on γδ T cells were not observed (data not shown). Independent of our *in vitro* assay studies with PBL and tumor cells, a low number of CD16-expressing immune cells within the tumors can be responsible for a reduced response toward trastuzumab in tumor patients. Thus, we exemplarily analyzed fresh tumor material of advanced OC patients, where the majority of the analyzed tumors expressed HER2 and compared the distribution of NK cells and γδ T cells within the tumors and the blood of these patients (**Figure 2B**). Interestingly, a significantly reduced number of NK- and γδ-T cells within TIL compared to PBL was observed (**Figure 2B**).

Bispecific Antibody as an Alternative to Trastuzumab

As trastuzumab did not optimally inhibit tumor cell proliferation, we employed a bispecific antibody in the tribody format (**Figure 3A**). [(HER2)₂xCD16] consists of a CD16 Fab fragment and two single chain fragments variable (scFv), which were derived from trastuzumab variable regions and which were genetically fused with a flexible linker to the CH1- or CL-domains of the CD16 Fab. [(HER2)₂xCD16] was transiently expressed in Lenti-X 293 T cells, purified, and analyzed by capillary electrophoresis (**Figure 3B**). Tribody [(HER2)₂xCD16] specifically bound HER2-positive tumor cells (**Figure 3C**) and CD16-expressing NK cells as well as γδ T cells (**Figure 3D**), but not antigen-negative cells such as Raji or αβ T cells (**Figures 3C,D**). In addition, tribody [(HER2)₂xCD89] was used as a control, which did not bind to CD89-negative NK cells, γδ-, or αβ-T cells (**Figure 3D**). The cytotoxic activity triggered by the tribody [(HER2)₂xCD16] was initially analyzed at varying concentrations and varying effector to target cell ratios (E/T ratio) (data not shown and following Figures). We measured a saturating concentration of tribody [(HER2)₂xCD16] between 0.1 and 1 μg/mL. In contrast, the saturating concentration of trastuzumab was 10 μg/mL.

Enhanced PBL-Mediated Lysis of HER2-Expressing Tumor Cells by Tribody [(HER2)₂xCD16] in Comparison to Trastuzumab

To compare the cytotoxic potential of [(HER2)₂xCD16] tribody with that of trastuzumab, we initially analyzed freshly isolated PBL from different PDAC patients ($n = 9$) and HDs ($n = 6$) that had been co-cultured with HER2-expressing PDAC cells (PancTu-I- or Panc89 cells) or breast cancer cells (MCF-7 cells) in the RTCA system (**Figure 4A**). Previously titrated saturating concentrations of 10 μg/mL trastuzumab and 1 μg/mL of tribody [(HER2)₂xCD16] together with IL-2 were applied (**Figure 4A**). Although the concentration of tribody [(HER2)₂xCD16] was 10-fold lower than that of trastuzumab, the tribody significantly and more potently enhanced the PBL-mediated lysis of HER2-expressing tumor cells (**Figure 4A**).

Moreover, PBL or TIL of patient OC11 were co-cultured with autologous primary ovarian tumor cells OC11 in the presence or absence of 1 µg/mL tribody [(HER2)₂xCD16] together with IL-2 (Figure 4B). Interestingly, lysis of HER2-expressing primary

ovarian tumor cells by autologous PBL or TIL was also significantly increased after the addition of tribody [(HER2)₂xCD16] (Figure 4B). The TIL-mediated lysis of autologous primary ovarian tumor cells was not complete, but very impressive due to the very

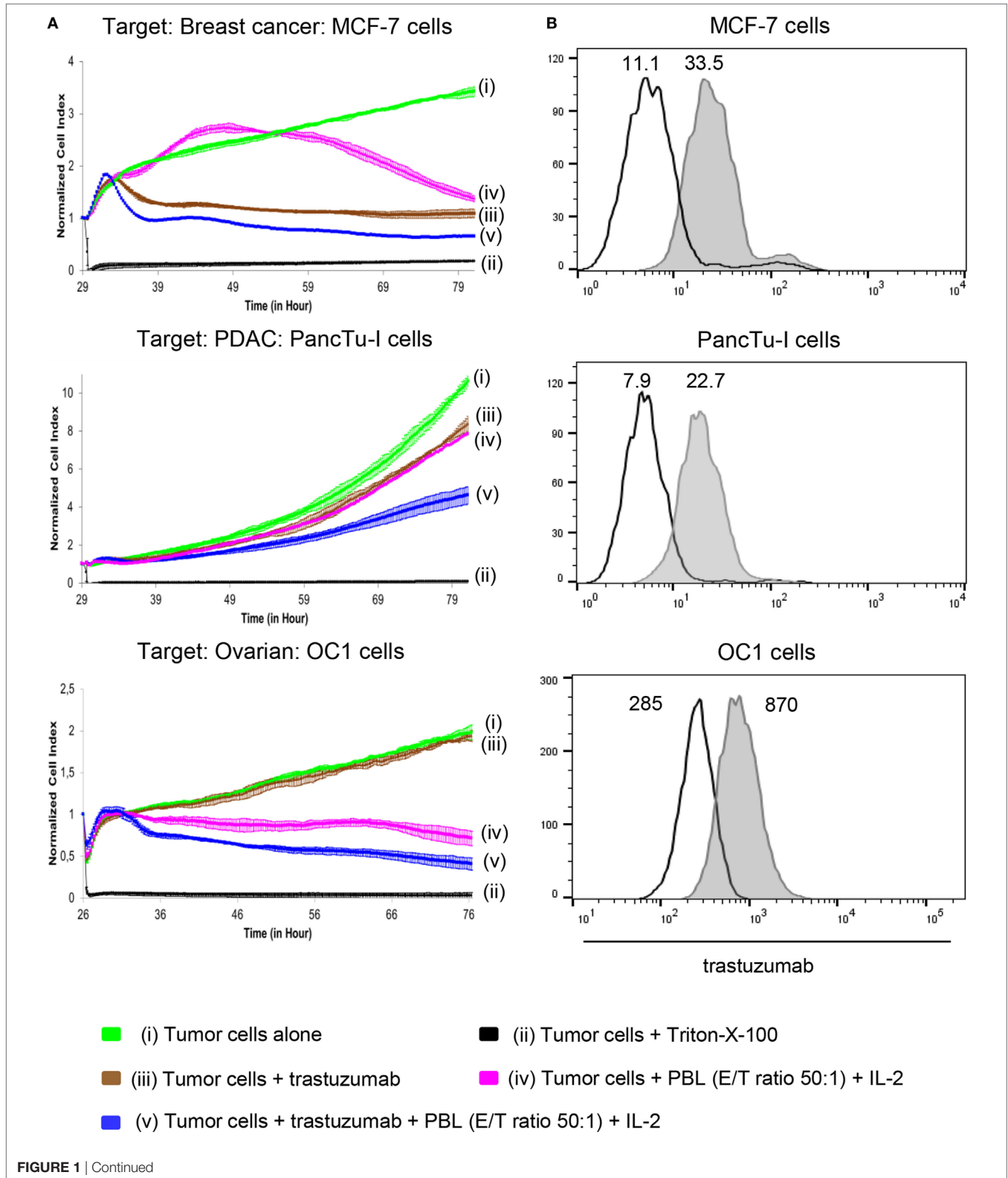


FIGURE 1 | Effect of trastuzumab on breast cancer, pancreatic ductal adenocarcinoma (PDAC), and ovarian cancer (OC) cells with different human epidermal growth factor receptor 2 (HER2) expression. **(A)** 10×10^3 MCF-7 cells, 5×10^3 PancTu-I cells, and 5×10^3 primary OC cells, OC1 [(i), green lines] were cultured in complete medium for 26–29 h on an E-plate covered at the bottom with electronic sensors that measured the impedance of the adherent tumor cells expressed as an arbitrary unit called cell index (CI) every 5 min. The CI was normalized to 1 shortly before the addition of substances as follows: (ii) Triton-X-100 to induce maximal lysis (black line), (iii) 10 $\mu\text{g}/\text{mL}$ trastuzumab (brown line), (iv) peripheral blood lymphocytes (PBL) of allogeneic breast cancer, PDAC, or OC patients (E/T ratio 50:1), respectively, together with 50 IU/mL rIL-2 (purple line), or (v) a combination of trastuzumab with PBL (blue line). CI was then measured every minute for additional 40 h. The loss of tumor cell impedance and thus a decrease of CI correlated with lysis of tumor cells. The average of triplicates and SD were calculated; one representative experiment out of four is shown. **(B)** HER2 expression of MCF-7 cells, PancTu-I cells, and primary OC cells OC1 cells was analyzed by staining the cells with 10 $\mu\text{g}/\text{mL}$ trastuzumab (gray histograms) and appropriate isotype controls (open black lines) as indicated, followed by appropriate second step Ab and measuring by flow cytometry. Numbers indicate the median fluorescence intensity of the isotype control and staining with trastuzumab, respectively.

low percentage of <0.5% NK cells and 0.9% $\gamma\delta$ T cells compared to 5% NK cells and 1.5% $\gamma\delta$ T cells within the PBL (**Figure 4B**; **Figure 2B** filled circle). Further, tribody [(HER2)₂xCD16] alone or control constructs such as tribody [(HER2)₂xCD89] which has no specificity for NK cells or $\gamma\delta$ T cells or tribody [(CD20)₂xCD16] targeting CD20 being not expressed on the applied tumor cells, did not trigger target cell lysis (Figure S2 in Supplementary Material).

NK Cells as Well as $\gamma\delta$ T Cells Are Activated by Tribody [(HER2)₂xCD16]

To analyze whether the cytotoxicity of both NK cells and $\gamma\delta$ T cells can be enhanced by the tribody [(HER2)₂xCD16], we magnetically isolated both cell populations from PBL of HDs. HER2-expressing PDAC cells such as Panc89 cells were used as targets to analyze the effect of the tribody [(HER2)₂xCD16] on freshly isolated NK cell- or $\gamma\delta$ T cell cytotoxicity in several RTCA-assays. We observed that the tribody [(HER2)₂xCD16] enhanced cytotoxic activity of freshly, negatively isolated NK cells which was dependent on the number of NK cells as expected (**Figures 5A–C**). At a higher E/T ratio all tumor cells were lysed. At lower E/T ratios tribody [(HER2)₂xCD16] triggered lysis was more pronounced in the presence of IL-2 (**Figures 5B,C**). Regarding a reduced percentage of innate immune cells at the tumor site as described for NK cells (**Figure 2B**), a parallel activation of additional innate-like immune cells can be beneficial. For instance, freshly, negatively isolated $\gamma\delta$ T cells can be activated *via* the TCR through their selective antigens [e.g., phosphorylated antigens (PAg)] in the presence of exogenous IL-2 to kill HER2-expressing Panc89 cells (**Figure 5D**, light blue and orange line indicating different E/T ratios), which can be further increased by the addition of tribody [(HER2)₂xCD16] (**Figure 5D**, dark blue and red line indicating different E/T ratios). In contrast to NK cells, the addition of exogenous IL-2 as well as the TCR engagement is absolutely essential for inducing optimal cytotoxic activity of freshly isolated $\gamma\delta$ T cells (**Figure 5D**, upper panel, pink and purple line indicating different E/T ratios). Tribody [(HER2)₂xCD16] alone (central **Figure 5D**, brown line) and control constructs such as tribody [(HER2)₂xCD89] or tribody [(CD20)₂xCD16] did not trigger target lysis (Figure S2 in Supplementary Material).

Tribody [(HER2)₂xCD16] Increased Cytotoxic Activity of $\gamma\delta$ T Cells Suitable for Adoptive Cell Transfer

In general bsAb can be applied in cancer immunotherapy in various clinical settings. Besides application as single agent, they

can be combined in regimens including adoptive cell transfer. Patient-derived $\gamma\delta$ T cells expanded with their selective antigens and IL-2 *in vitro* might be combined with bsAb to enhance cytotoxic activity of transferred $\gamma\delta$ T cells. The latter approach requires an examination of the cytotoxic activity of short-term expanded $\gamma\delta$ T cells in comparison to freshly isolated ones. As shown in ⁵¹chromium-release experiments, we observed a limited cytotoxic capacity of short-term expanded $\gamma\delta$ T cells from HDs ($n = 5$) as well as from PDAC patients ($n = 5$) against the PDAC cell line PancTu-I (**Figure 6B**, medium, left two panels). The limited cytotoxicity of short-term expanded $\gamma\delta$ T cells was somewhat enhanced by the addition of their selective antigens such as PAg (**Figure 6B**, phosphoantigen, right two panels), whereas the addition of trastuzumab only weakly increased the cytotoxicity of these $\gamma\delta$ T cells (**Figure 6C**, medium). Lysis induced by trastuzumab (**Figure 6C**, medium) correlated with the CD16 expression on the surface of the $\gamma\delta$ T cells (**Figure 6A**). Thus, short-term expanded $\gamma\delta$ T cells of HD donor 5 (**Figure 6A**, quadrat) and PDAC donor 3 (**Figure 6A**, circle), which both had a high percentage of CD16-positive cells, exerted an enhanced cytotoxic activity (**Figure 6C**, medium). In contrast, short-term expanded $\gamma\delta$ T cells of other donors, which expressed lower numbers of CD16 (**Figure 6A**), were only slightly affected (**Figure 6C**, medium). Similar to the $\gamma\delta$ T cells within the PBL, we screened the CD16 expression on all established short-term expanded $\gamma\delta$ T cells of HD ($n = 43$) as well as of PDAC patients ($n = 20$) which were used in different experiments in this studies (Figure S3 in Supplementary Material). In general, we observed a high variability in CD16 expression between 1 and 70% which drastically influenced the effectiveness of trastuzumab (Figure S3 in Supplementary Material; **Figure 6C**). Although we observed that the combination of trastuzumab and PAg BrHPP enhanced $\gamma\delta$ T cell-mediated killing of PancTu-I cells (**Figure 6C**, phosphoantigen), the application of tribody [(HER2)₂xCD16] was more potent in enhancing $\gamma\delta$ T cell-mediated killing (**Figure 6D**, medium) than trastuzumab (**Figure 6C**, medium) presumably due to the higher CD16 binding affinity. Interestingly, the combination of tribody [(HER2)₂xCD16] and BrHPP enhanced the cytotoxic activity of $\gamma\delta$ T cells from PDAC patients more prominent than $\gamma\delta$ T cells from HDs (**Figure 6D**, phosphoantigen). This can be explained by the lower CD16 expression on $\gamma\delta$ T cell lines of PDAC patients (**Figure 6A**). Importantly, it demonstrates the effectiveness of tribody [(HER2)₂xCD16] on low CD16-expressing cells.

In another assay with additional short-term expanded $\gamma\delta$ T cell lines of three different donors as effector cells and HER2-expressing PancTu-I cells, we analyzed in parallel HER2-negative, CD20-positive Raji tumor cell line as target cells to prove specificity

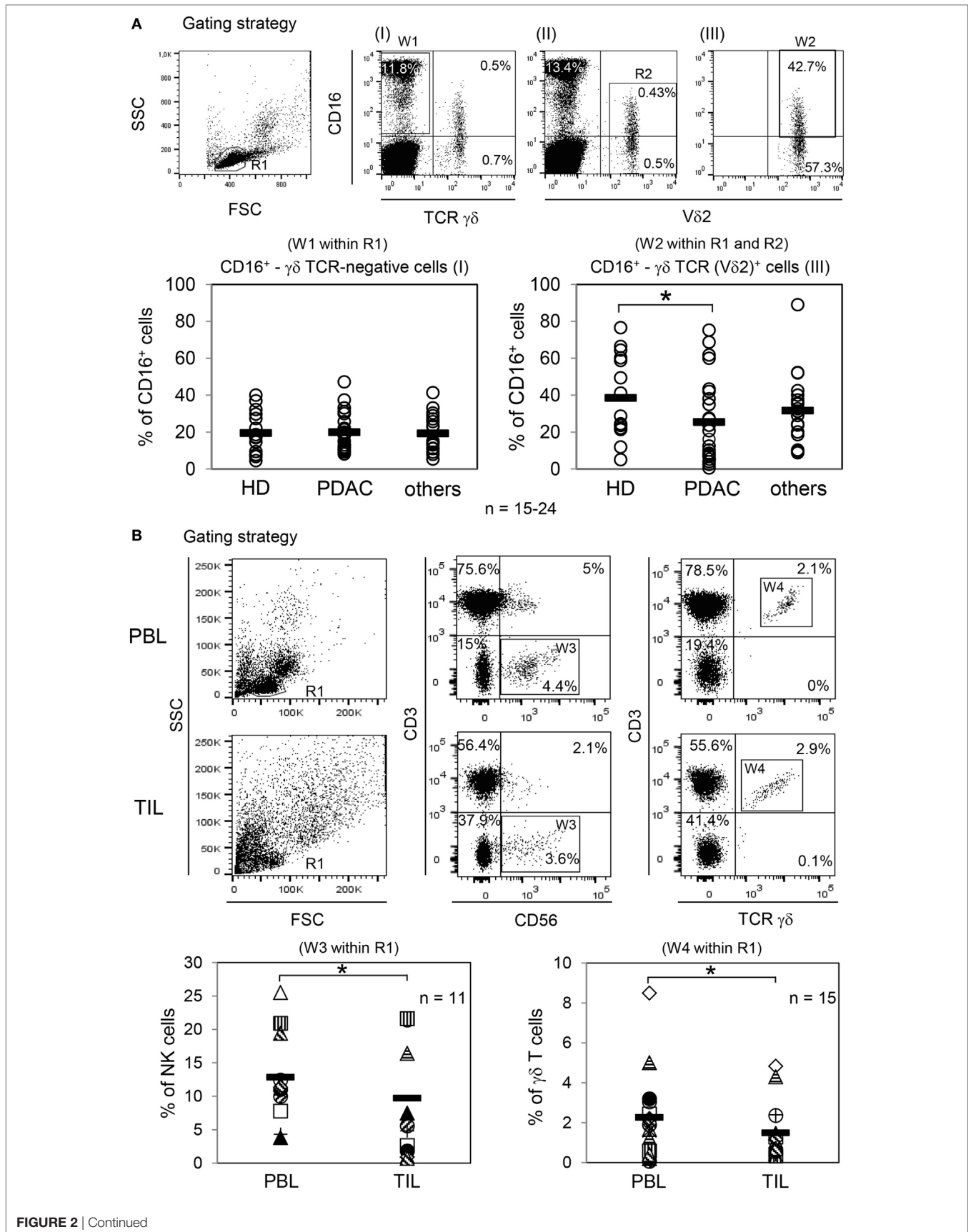


FIGURE 2 | Analysis of CD16 expression within peripheral blood lymphocytes (PBL) and distribution of natural killer (NK) cells and $\gamma\delta$ T cells within PBL and tumor-infiltrating lymphocytes (TIL) of ovarian cancer (OC) patients. **(A)** Gating strategy with one healthy donor (HD) for determination of CD16⁺ $\gamma\delta$ T cell-negative or -positive cells. CD16⁺ $\gamma\delta$ TCR-negative cells were calculated within lymphocytes (R1; FSC/SSC) by pan T cell receptor (TCR) $\gamma\delta$ -negative and CD16-positive expression (W1; I). CD16⁺ TCR $\gamma\delta$ (V δ 2)-positive T cells were determined within lymphocytes (R1; FSC/SSC) by CD16-positive as well as by pan TCR $\gamma\delta$ -positive (I) and V δ 2-positive (II) cells. For precise CD16 expression on V δ 2-positive T cells, an additional gate (R2; II) was set and the expression was calculated in the logical gate of “R1 AND R2” (W2; III). In parallel, CD3 expression of all analyzed $\gamma\delta$ T cells was determined (data not shown). The relative percentage of CD16-expressing $\gamma\delta$ T cell-negative cells [NK cells, (W1 within R1)] and TCR V δ 2 $\gamma\delta$ -positive T cells (W2 within R1 and R2) were analyzed from PBL of age-matched HDs (HD, $n = 24$, 12 females, 12 males; age 65 ± 10 years), from PDAC patients ($n = 24$, 12 females, 12 males; age 64 ± 11 years), and from patients with other cancer diseases ($n = 15$, age 64 ± 11 years). Each symbol represents the data of one donor, and the thick bars represent the mean value of different experiments. Significances were performed by the Wilcoxon rank sum test and are shown as P value; * $P < 0.05$. **(B)** Gating strategy of NK cells and $\gamma\delta$ T cells within PBL or TIL of one OC patient. NK cells were defined by CD3-negative and CD56⁺ cells (W3) within R1 (FSC/SSC) and $\gamma\delta$ T cells by CD3⁺ pan TCR $\gamma\delta$ ⁺ cells (W4) within R1. The relative percentage of NK cells ($n = 11$; age 57 ± 10) is shown in “W3 within R1” and for $\gamma\delta$ T cells ($n = 15$; age 56 ± 13) in “W4 within R1.” Each symbol presents the data of one donor. Mean values of different experiments are indicated (thick bars). Significances were assessed by the Wilcoxon rank sum test and are shown as P value, * $P < 0.05$.

of the tribody [(HER2)₂xCD16]. Tribody [(HER2)₂xCD16] triggered lysis of HER2-expressing tumor cells, but not of HER2-negative Raji cells, which, however, were efficiently killed in the presence of PAg BrHPP or tribody [(CD20)₂xCD16] (Figure S4 in Supplementary Material).

In addition, the results of the ⁵¹Cr-release assay for PancTu-I cells were confirmed by the RTCA-assay (Figure 7). Again, the tribody [(HER2)₂xCD16] enhanced the $\gamma\delta$ T cell-mediated cytotoxicity against PancTu-I cells at different E/T ratios more extensively than trastuzumab independent of whether short-term expanded $\gamma\delta$ T cells from PDAC patients ($n = 7$) or from HDs ($n = 4$) were used (Figure 7A). Similar to the results with PancTu-I cells, we observed that $\gamma\delta$ T cell cytotoxicity against other HER2-expressing tumor cells such as established breast cancer cell line MCF-7 (Figure 7B) or autologous primary OC cells OC11 (Figure 7C) was increased. The lysis of the latter one was enhanced after addition of autologous short-term expanded $\gamma\delta$ T cells isolated from TIL together with tribody [(HER2)₂xCD16]. As expected, the control constructs had no cytolytic effect (data not shown). We observed no significant enhancement of $\gamma\delta$ T cell cytotoxicity by the tribody [(HER2)₂xCD16] compared to trastuzumab when we used a high E/T ratio and Panc89 cells as target cells, which were lysed more efficiently than other PDAC cells (e.g., PancTu-I- or Panc1 cells; Figure S5 in Supplementary Material). Interestingly, a reduced lysis of Panc89 cells by short-term expanded $\gamma\delta$ T cells, which was due to a lower E/T ratio (5:1) was more effective with tribody [(HER2)₂xCD16] than with trastuzumab, although $\gamma\delta$ T cells from some donors expressed CD16 very weakly at the cell surface (Figures S3 and S5 in Supplementary Material). Enhanced $\gamma\delta$ T cell-mediated lysis with tribody [(HER2)₂xCD16] was also observed at a lower E/T ratio when other HER2-expressing tumor cells such as the esophageal cancer cell line OE33 were used (Figure S5 in Supplementary Material).

Enhanced $\gamma\delta$ T Cell Cytotoxicity Against HER2-Expressing Tumor Cells by Tribody [(HER2)₂xCD16] Is Mediated by Cytolytic Granules

Besides the aspect that several PDAC cells are almost resistant to the CD95- or TRAILR-induced cell death, $\gamma\delta$ T cells mainly mediate their cytotoxic activity through the release of cytolytic granules (47). As shown in Figure 8, the CD107a-degranulation

assay revealed a significantly enhanced exocytosis after application of tribody [(HER2)₂xCD16] to short-term expanded $\gamma\delta$ T cells from HDs or PDAC patients co-cultured with PancTu-I cells which was accompanied by an increase in granzyme B release (Figures 8A,B). Degranulation was *per se* higher after PAg-stimulation, but was further significantly enhanced after additional application tribody [(HER2)₂xCD16] (Figure 8A). Interestingly, the intracellular content of granzyme B was not influenced by the treatment with tribody [(HER2)₂xCD16] suggesting a permanent intracellular production of granzyme B (Figure 8C).

DISCUSSION

In this study, the tribody [(HER2)₂xCD16] efficiently enhanced the cytotoxic activity of NK cells and $\gamma\delta$ T cells of healthy persons as well as of cancer patients against HER2-expressing tumor cells including breast-, pancreatic-, ovarian-, and esophageal cancer cells. While NK cells can be activated directly by tribody [(HER2)₂xCD16], the addition of exogenous IL-2 as well as the TCR engagement is essential for inducing cytotoxicity in resting $\gamma\delta$ T cells pointing to a pre-activation of $\gamma\delta$ T cells by their selective antigens (e.g., PAg or n-BP) *in vivo* or an adoptive transfer of short-term activated $\gamma\delta$ T cells together with the tribody as potential therapeutic strategies.

In contrast to trastuzumab, tribody [(HER2)₂xCD16] enhanced the cytotoxic activity even of CD16 low-expressing $\gamma\delta$ T cells of PDAC patients together with their selective antigens (e.g., PAg or nBP) and IL-2 against HER2-low-expressing PDAC cell lines. Interestingly, we observed a reduced number of NK cells within TIL of OC patients before surgery and chemotherapy which may explain the superiority of PBL compared to TIL (both from OC patients) against autologous tumor cells. An activation of $\gamma\delta$ TIL of OC patient OC11 after neoadjuvant chemotherapy stimulated *via* PAg together with Th1 cytokine IL-2 and tribody [(HER2)₂xCD16] efficiently increased lysis of autologous HER2-expressing primary OC cells (OC11) suggesting a compensation of the low number of NK cells within TIL by $\gamma\delta$ T cell activation. In this context, our own additional data reveal that the absolute $\gamma\delta$ T cell number in a cohort of 26 breast cancer patients receiving chemotherapy did not differ from the number before chemotherapy, in contrast to decreased NK cells and $\alpha\beta$ T cell numbers (48).

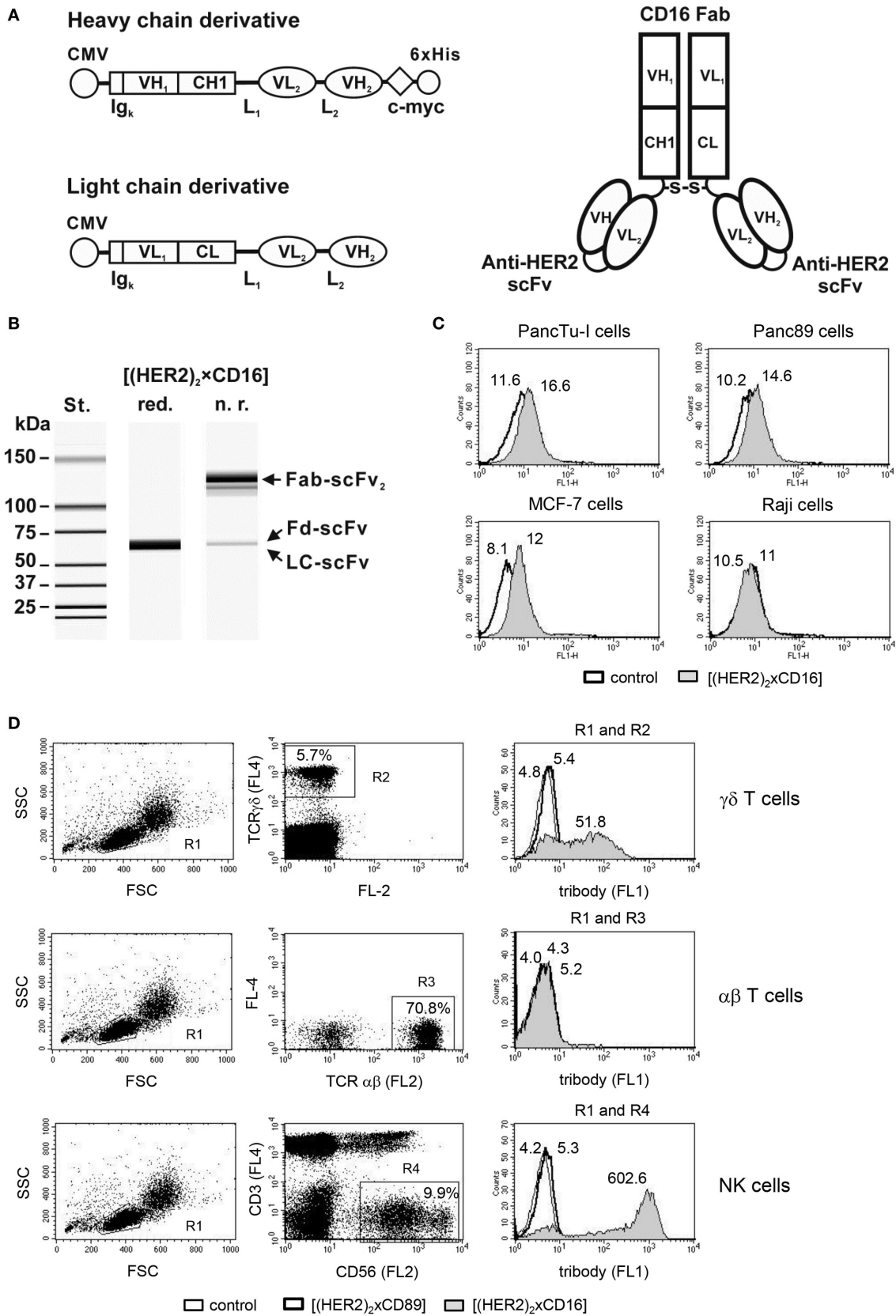


FIGURE 3 | Continued

FIGURE 3 | Design and purification of [(HER2)₂xCD16]. **(A)** Scheme of the expression cassettes for (left) the tribody protein and (right) the assembled tribody molecule. CMV, cytomegalovirus immediate early promoter; Ig_κ, murine Ig kappa secretion leader; VH₁, VL₁, and CH1, CL, sequences coding for the human immunoglobulin (Ig) variable (V) or constant (C) heavy and light chain regions from the CD16 mAb, respectively; VH₂, VL₂, sequences coding for the variable heavy and light chain regions building a scFv with specificity for HER2; L₁, L₂, sequence coding for a 15 amino acid flexible linker (G₄S)₃ and a 20 amino acid flexible linker (G₄S)₄, respectively; c-myc and 6xHis, sequence coding for the c-myc epitope and a hexahistidine tag, respectively. S-S, disulfide bond. **(B)** Evaluation of the purity of the [(HER2)₂xCD16] tribody by capillary electrophoresis; Fd, fragment difficult; LC, light chain. Specific binding of **(C)** tumor cells (e.g., PancTu-1, Panc89, MCF-7, and Raji) and **(D)** γδ T and NK cells within PBL and lack of binding to αβ T cells within PBL was analyzed by flow cytometry. Representative experiments out of three analyzed are presented. **[(D), left and middle panel]** The percentage of γδ T cells were defined by pan TCR γδ⁺ cells (R2), αβ T cells by pan TCR αβ⁺ cells (R3), and NK cells by CD3-negative and CD56⁺ cells (R4), respectively, all within the lymphocyte gate R1 (FSC/SSC). **[(D), right panel]** The median fluorescence intensity of isotype or tribody staining was presented by histogram blots for γδ T cells (R1 and R2), αβ T cells (R1 and R3), or for NK cells (R1 and R4). Numbers indicate the median fluorescence intensity of the isotype control [bold line in **(C)** and thin line in **(D)** as indicated] and staining with [(HER2)₂xCD89] [bold line in **(D)**] or [(HER2)₂xCD16] [gray filled in **(C,D)**] respectively.

Human epidermal growth factor receptor 2 can be overexpressed in advanced breast, gastric, colorectal, pancreatic, and OC cells (6). In general, HER2-expressing tumors are regarded as biologically aggressive neoplasms frequently associated with chemo-resistance and poor clinical outcome. Therapy with humanized HER2 mAb targeting different members of the epidermal growth factor receptor (EGFR) family combined with cytostatic agents e.g., docetaxel and potentially tyrosine kinase inhibitors such as, e.g., lapatinib or neratinib/afatinib has clearly improved the outcome of patients with metastatic breast or gastric cancer (6, 10–12). Trastuzumab as well as pertuzumab induce cell death *in vitro* by inhibiting the Ras-MAP-kinase- or PI3K/Akt/mTOR pathway in tumors or ADCC (2, 49). In neoadjuvant settings, trastuzumab and pertuzumab in combination with chemotherapy have been shown to improve pathological complete response (pCR) in early or locally advanced breast cancer. In adjuvant settings, trastuzumab with taxane-based chemotherapy is considered standard of care (2, 11, 50–53).

Combining trastuzumab with chemotherapy has been also described in a few clinical trials to significantly improve overall survival compared with chemotherapy alone in HER2-positive advanced gastric and in one clinical trial in metastatic pancreatic cancer (37, 54, 55). In addition, several case reports described an effect of trastuzumab on HER2-expressing uterine serous and high-graded endometrioid tumors varying from complete response to stable disease for 11 months (56–58). However, single drug trastuzumab in HER2-overexpressing OC show only moderate activity (59). Anti-HER2 monotherapy is currently not a standard therapy for OC patients. Several previously unpublished or ongoing phase I or II trial studies (<https://clinicaltrials.gov/>) treated OC patients with either trastuzumab combined with chemotherapy (NCT00433407) or HER2 cytotoxic T-cell (CTL) peptide-based vaccine (NCT00194714) or anti-CD3xanti-HER2/neu (HER2Bi) armed anti-CD3 activated T cells (aATC) plus low-dose aldesleukin and sargramostim (NCT02470559). The application of our tribody [(HER2)₂xCD16] to OC patients could be an option to enhance avidity to HER2-expressing OC cells due to the format with the two HER2-binding sites as well as the possibility to target innate cells (NK cells) as well as cells linking innate and adaptive immunity (γδ T cells) instead of a polyclonal activation of all T cells after stimulation with anti-CD3.

In our studies, we observed a direct effect of trastuzumab on breast cancer cells MCF-7 *in vitro* and enhanced trastuzumab-mediated lysis in the presence of PBL which mediate ADCC. In

addition, we demonstrated an enhanced lysis of HER2-expressing tumor cells by the combination of trastuzumab and PBL in PDAC cell lines established from primary cells (stage G1–G3, e.g., PancTu-1 and Panc1) as well as in OC cells such as cisplatin-resistant SK-OV-3 cells and primary tumor cells OC1 and OC11.

Besides an initial existing resistance against anti-HER2 treatment, a further not completely understood problem seems to be an evolving secondary HER2-resistance. Several reasons are suggested as follows (6, 10, 49): (i) diminished HER2 expression, (ii) accumulation of an intracellular truncated active kinase p95-HER2 which lacks an extracellular domain (60, 61), (iii) overexpression of other EGFR family members, (iv) hindrance of trastuzumab binding, (v) hyper-activation of the downstream PI3K-Akt-mTOR pathway based on genetic alterations of the tumors (62), (vi) competing circulating immunoglobulins for FcγR (e.g., CD16) binding, (vii) cleavage of CD16 from the cell surface of NK cells by matrix metalloproteinases (63), (viii) undesired binding of inhibitory FcγR instead of activating ones, or (ix) loss of Th1 CD4⁺ T cells in the tumor microenvironment which supports cytotoxic T cells, such as CD8⁺ αβ TCR⁺ or γδ TCR⁺ cells (5, 64, 65).

Novel strategies are in development aiming to achieve more effective and durable responses. An attempt to combat trastuzumab resistance was the development of the ADC trastuzumab emtansine (T-DM-1). The cytotoxic agent emtansine (DM-1), which destroys tumor cells by binding to tubulin, has been conjugated to trastuzumab which inhibits the PI3K signaling (13, 49). An improvement of progression-free and overall survival in heavily pretreated patients with advanced HER2⁺ breast cancer and an acceptable toxicity profile has been demonstrated in phase III clinical trials (66, 67). Ongoing trials evaluate the role of T-DM-1 in neoadjuvant treatment of HER2⁺ breast cancer (68). In parallel, the development of further ADC such as SYD985 which are tested in ongoing phase I clinical trials, is enforced (49).

Another possibility can be a Th1 cytokine-induced senescence in tumor cells (5, 64, 65). The treatment of HER2-expressing breast cancer cells with Th1 cytokines, IFN-γ and TNF-α can cause oncogene inactivation of HER2 followed by a cell-cycle arrest of the tumor cells (5, 64). Since IFN-γ/TNF-α treatment of patients is not advisable, HER2⁺ breast cancer patients were treated with HER2-pulsed dendritic cells (DC) to restore depressed Th1 response which seems to be due to a functional and reversible cytokine shift (69). Datta et al. reported that a preserved

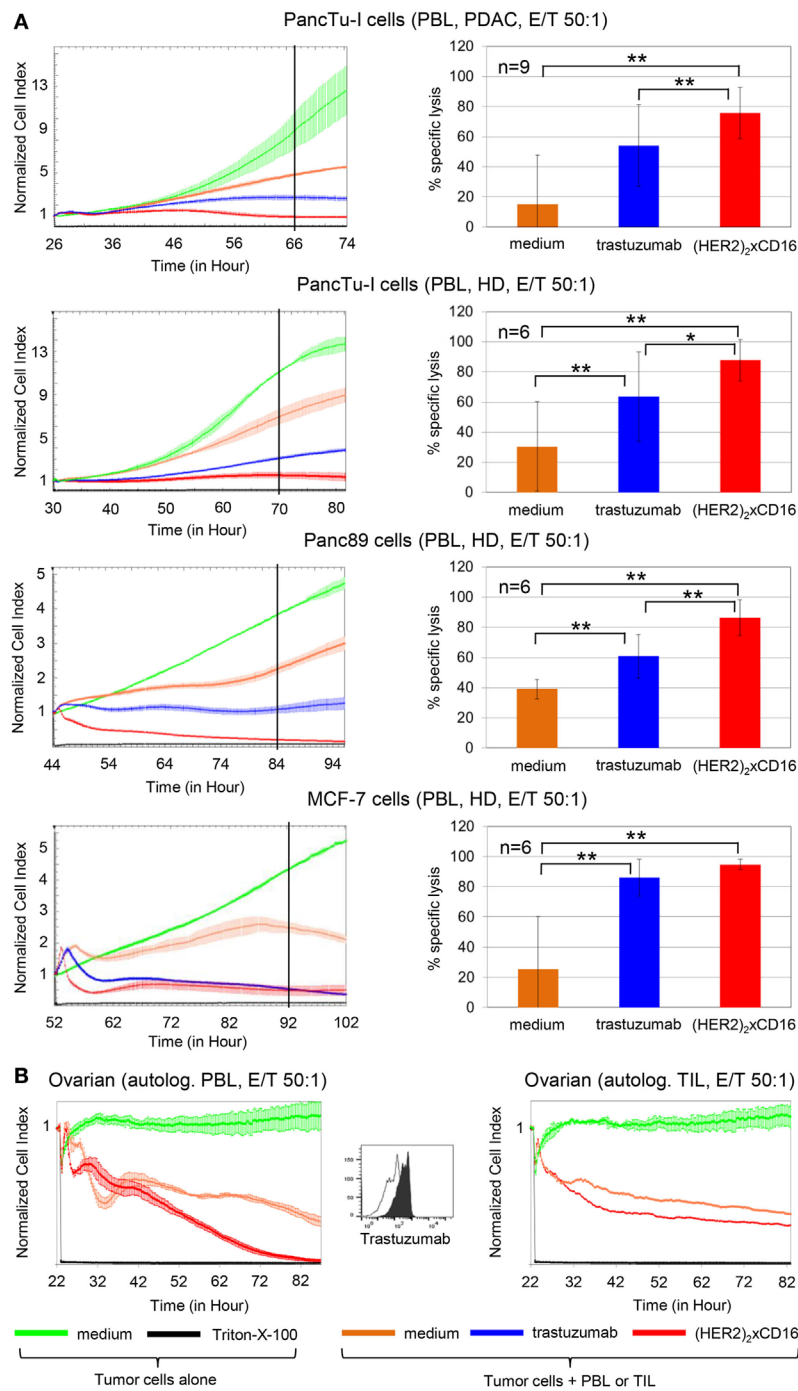


FIGURE 4 | Tribody [(HER2)₂xCD16] increased cytotoxicity compared to trastuzumab. **(A)** After culturing 5×10^3 pancreatic ductal adenocarcinoma (PDAC) cells (PancTu-I- and Panc89 cells), 10×10^3 breast cancer cells (MCF-7 cells) overnight, cells were cultured without or with allogeneic peripheral blood lymphocytes (PBL) at an E/T ratio of 50:1 in the presence of 50 IU/mL rIL-2 with medium (orange line), 10 μ g/mL trastuzumab (blue line), or 1 μ g/mL tribody [(HER2)₂xCD16] (red line). As control cells were left untreated (green line) or treated with Triton-X-100 (black line). **(B)** 5×10^3 primary ovarian cancer (OC) cells OC11 had been cultured overnight in medium before the addition of medium control (green line) or Triton-X-100 (black line) in the absence of effector cells. Autologous PBL or TIL of human epidermal growth factor receptor 2 (HER2)-expressing OC patient OC11 cultivated with 50 IU/mL rIL-2 were added at an E/T ratio of 50:1 alone (orange line) or with 1 μ g/mL tribody [(HER2)₂xCD16] (red line). **(A,B)** The cell index was analyzed in 5 min steps over ~24–52 h and after normalization to 1 (after addition of PBL \pm substances) in 1 min steps for >50 h as indicated. The average of three replicates with SD is presented for each tumor cell line with PBL **(A,B)** or TIL **(B)**, right figure for OC) of one representative healthy donor or cancer patients (PDAC, OC, left panel) in independent experiments. For validation, experiments were replicated several times under equal conditions using different PBL of different donors in independent experiments (right panel). The cytotoxic capacity of PBL against the indicated tumor cells in the presence of medium (orange bars), 10 μ g/mL trastuzumab (blue bars), or 1 μ g/mL tribody [(HER2)₂xCD16] (red bars) was calculated 40 h (black line, left panel) after addition of effector cells (PBL) as % of specific lysis compared to control sample (green line) and maximal lysis (black line). Statistical analysis was performed by *t* test. Significances are shown as *P* value; **P* < 0.05 and ***P* < 0.01.

anti-HER2 Th1 response was associated with pCR to neoadjuvant trastuzumab application combined with chemotherapy (70). In addition, the anti-HER2 DC vaccination was combined with

anti-estrogen therapy which improved regional nodal immune response and pCR rate in patients with estrogen receptor⁺/HER2⁺ early breast cancer (71).

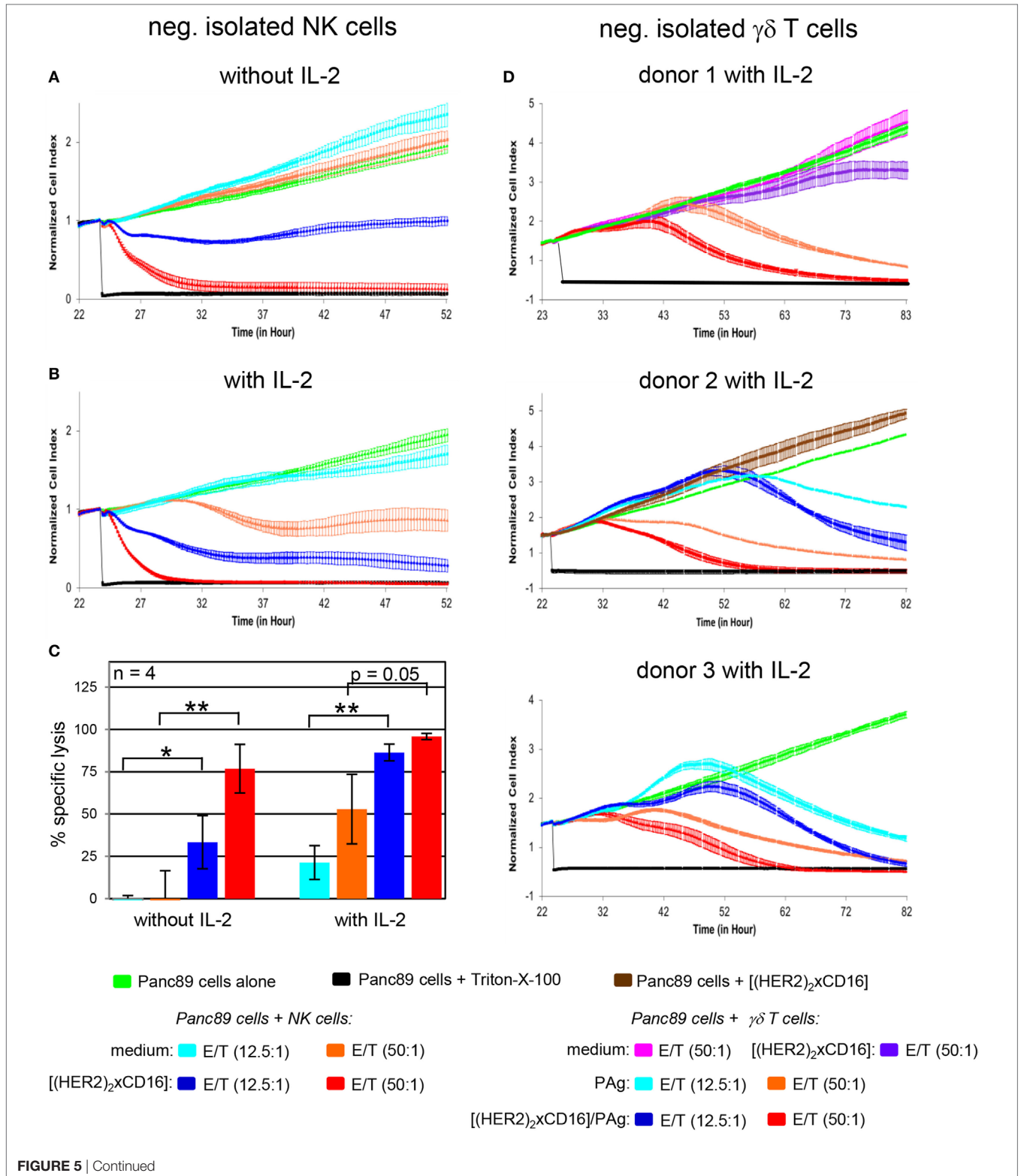


FIGURE 5 | Enhancement of freshly isolated natural killer (NK) cell- and $\gamma\delta$ T cell-mediated lysis of Panc89 cells by tribody [(HER2)₂xCD16]. 5×10^5 Panc89 cells were seeded overnight in complete medium. Cell index was analyzed in 5 min steps over ~22 h. After overnight adherence, Panc89 cells were cultured with additional complete medium (green line), 1 $\mu\text{g}/\text{mL}$ tribody [(HER2)₂xCD16] (brown line), or positive control Triton-X-100 (black line). Additionally, Panc89 cells were co-cultured with (A–C) allogeneic negatively, freshly isolated NK cells or (D) $\gamma\delta$ T cells at the indicated E/T ratio with or without 50 IU/mL rIL-2 (as indicated) in the presence of medium [light blue line (E/T ratio 12.5:1); orange line (E/T ratio 50:1)] or 1 $\mu\text{g}/\text{mL}$ tribody [(HER2)₂xCD16] [dark blue line (E/T ratio 12.5:1); red line (E/T ratio 50:1)] and for $\gamma\delta$ T cells with 300 nM phosphorylated antigen bromohydrin-pyrophosphate (BrHPP) or without BrHPP in medium (pink line) or 1 $\mu\text{g}/\text{mL}$ tribody [(HER2)₂xCD16] at an E/T ratio 50:1. Lysis of tumor cells was measured after normalization to 1 in 1 min steps for >30 h as indicated. (A,B,D) The average of three replicates with SD is represented for each tumor cell line with effector cells of one representative healthy donor (HD) in independent experiments. (C) Several replications of the experiments under equal conditions using different NK cells of different donors in independent experiments were performed. The NK cell cytotoxicity against Panc89 cells was calculated 30 h after addition of NK cells without or with IL-2. The % of specific lysis was calculated by comparing measured samples to control sample (green line) and maximal lysis (black line). Statistical analysis was performed by *t* test. Significances are shown as *P* value; **P* < 0.05 and ***P* < 0.01.

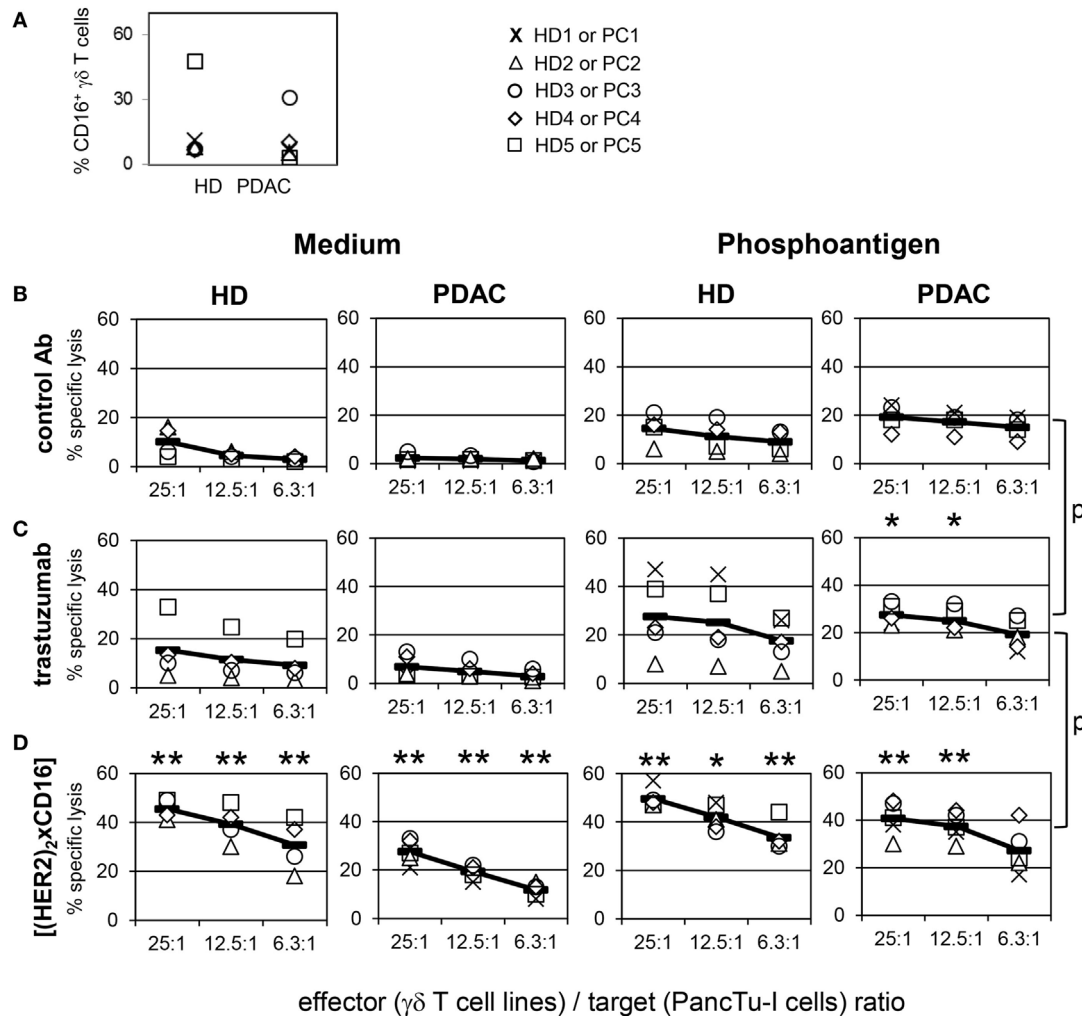


FIGURE 6 | Enhancement of $\gamma\delta$ T cell-mediated pancreatic ductal adenocarcinoma (PDAC) lysis by tribody [(HER2)₂xCD16]. (A) V γ 9V δ 2 $\gamma\delta$ T cell lines of healthy donors (HDs) or PDAC patients were stained with anti-CD16 monoclonal antibodies (% CD16⁺ $\gamma\delta$ T cells) or cultured with (B) control Ab, (C) 10 $\mu\text{g}/\text{mL}$ trastuzumab, or (D) 1 $\mu\text{g}/\text{mL}$ tribody [(HER2)₂xCD16] in complete medium (left panel) or with 300 nM phosphoantigen bromohydrin-pyrophosphate (right panel) as indicated. (B–D) $\gamma\delta$ T cell lines at the indicated E/T ratios were added to ⁵¹Cr-labeled PancTu-I cells for 4 h. Each symbol represents the mean value of triplicate assays of one donor. Representative results from five different HDs and five different PDAC patients are shown. Statistical analysis was performed by *t* test. Significances are shown as *P* value; **P* < 0.05 and ***P* < 0.01.

A very promising strategy to overcome certain limitations of mAb and above-mentioned HER2-resistance mechanisms may be the use of bsAb with an enhanced cytotoxic activity against

tumor cells (24). Sahied et al. designed bispecific minibodies targeting HER2 and CD16 which possess the advantages of a native IgG with respect to flexibility but in a different format.

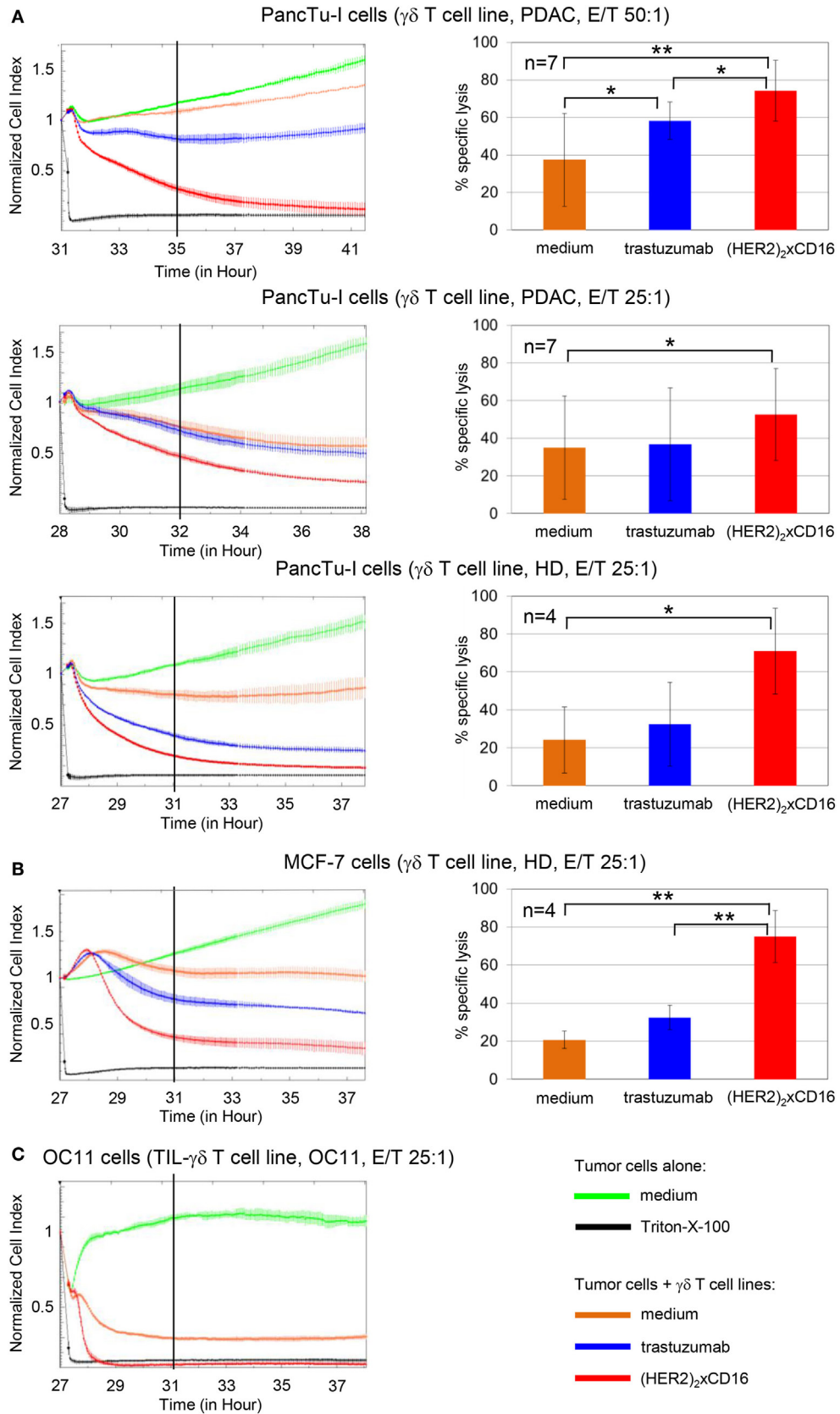


FIGURE 7 | Continued

FIGURE 7 | Enhanced cytotoxicity of tribody [(HER2)₂xCD16] compared to trastuzumab. 5×10^3 PDAC cells (PancTu-1 and Panc89 cells), 10×10^3 breast cancer cells (MCF-7 cells), or 5×10^3 ovarian cancer (OC) OC11 cells were seeded overnight. Cell index was analyzed in 5 min steps over ~27–31 h. After reaching the linear growth phase, tumor cells were co-cultured with medium (green line) or with (A,B) allogeneic or (C) autologous V γ 9V δ 2 T cell lines at the indicated E/T ratio with 12.5 IU/mL rIL-2 in the presence of medium (orange line), 10 μ g/mL trastuzumab (blue line), or 1 μ g/mL [(HER2)₂xCD16] tribody (red line). Lysis of tumor cells was measured after normalization to 1 in 1 min steps for >10 h as indicated and compared to maximal lysis (black line). The average of three replicates with SD is represented for each tumor cell line with allogeneic V γ 9V δ 2 T cell lines of one representative healthy donor or cancer patients (PDAC) or autologous V γ 9V δ 2 T cell line established out of the TIL of patient OC11 (left panel) in independent experiments. Several replications of the experiments using different V γ 9V δ 2 T cell lines of different donors in independent experiments were performed (right panel). The cytotoxicity of V γ 9V δ 2 T cell lines against the indicated tumor cells in the presence of medium (orange bars), 10 μ g/mL trastuzumab (blue bars), or 1 μ g/mL tribody [(HER2)₂xCD16] (red bars) was calculated 4 h after addition of V γ 9V δ 2 T cell lines. The % of specific lysis was calculated by comparing measured samples to control sample (green line) and maximal lysis (black line). Statistical analysis was performed by *t* test. Significances are shown as *P* value; **P* < 0.05 and ***P* < 0.01.

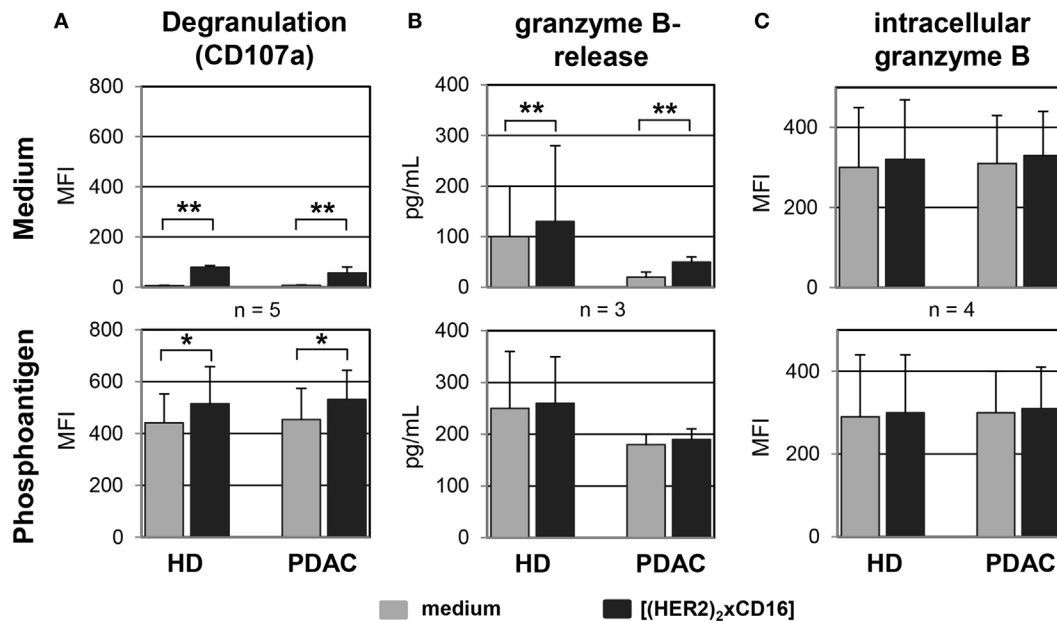


FIGURE 8 | Tribody [(HER2)₂xCD16] induces an enhanced degranulation and release of granzyme B. Short-term expanded $\gamma\delta$ T cells were co-cultured with PancTu-1 cells (E/T ratio of 12.5:1) in medium (upper panel) or 300 nM phosphoantigen bromohydrin-pyrophosphate (lower panel) in the presence of medium or 1 μ g/mL of the tribody [(HER2)₂xCD16] and (A) degranulation was analyzed by staining $\gamma\delta$ T cells with anti-V δ 2 TCR and anti-CD107a monoclonal antibodies and then determining the median fluorescence intensity (MFI) of CD107a on V δ 2 TCR-expressing $\gamma\delta$ T cells using flow cytometry or by (B) measuring the release of granzyme B in the supernatants using specific ELISAs or (C) the intracellular MFI of granzyme B using a flow cytometer after 4 h of co-culturing. Result \pm SD of three donors is shown. Statistical analysis was performed by *t* test. Significance is presented as **P* < 0.05 and ***P* < 0.01.

These minibodies have the potential to target HER2-expressing tumor cells and promote their lysis by NK cells and mononuclear phagocytes. Here, we employed the tribody [(HER2)₂xCD16] to examine whether $\gamma\delta$ T cells within PBL or TIL of PDAC and OC patients can be activated additionally to NK cells. Besides their HLA-independent recognition of antigens and their reduced induction of a graft-versus-host disease, an additional advantage of simultaneously activated $\gamma\delta$ T cells is their capacity to present antigens, their possibility to induce maturation of DC, and their production of Th1 cytokines such as IFN- γ and TNF- α , which could compensate for a decreased number of CD4⁺ T cells (producing Th1 cytokines) at the tumor-site of PDAC patients (33–35, 72). Regarding the role of $\gamma\delta$ T cells in the uptake of antigens *via* Ab-opsonization and CD16 and their possibility to cross-present antigens to $\alpha\beta$ T cells after their activation (33, 73), we can speculate that tumor antigens

could be taken up by $\gamma\delta$ T cells and presented to $\alpha\beta$ T cells after activation based on our observation that PAG and tribody [(HER2)₂xCD16] stimulation induce a $\gamma\delta$ T-APC phenotype. In contrast to the activation of NK cells by [(HER2)₂xCD16], our results revealed that $\gamma\delta$ T cells have to be concomitantly activated by their selective antigens and IL-2 in addition to the tribody to exert enhanced cytotoxic activity. Regarding a pre-activation of $\gamma\delta$ T cells, an initial application of clinically licensed n-BP or PAG together with IL-2 is necessary for $\gamma\delta$ T cells expansion to guarantee their enhanced cytotoxic activity by tribody [(HER2)₂xCD16].

Our results clearly demonstrate that $\gamma\delta$ T cells within PBL or TIL can be activated *via* a combined stimulation by their selective antigens plus IL-2 plus tribody [(HER2)₂xCD16] to effectively lyse allogeneic as well as autologous tumor cells *via* the release of granzyme B. In general, cytotoxic $\gamma\delta$ T cells often release

granzymes out of their cytolytic granules after their activation by bsAb, which could be an advantage regarding the aspect that several tumor cells are almost resistant to the CD95- or TRAILR-induced cell death (38, 47). In addition, an adoptive transfer of $\gamma\delta$ T cells with [(HER2)₂xCD16] or [(HER2)₂xV γ 9] could enhance their cytotoxicity and support the anti-tumor response of innate cells activated *via* [(HER2)₂xCD16]. Regarding the reported anti-tumor response of macrophages and neutrophils, an additional activation of $\gamma\delta$ T cells at the tumor-site can be promising with respect to the differential infiltration of innate cells and $\gamma\delta$ T cells in different tumor entities (74). If a bsAb targeting two HER2 molecules should be replaced by a bsAb targeting HER2/HER3 or HER2/HER4 or other families of the EGFR family has to be evaluated but the cognate activation of innate and innate-like cells (e.g., $\gamma\delta$ T cells) *via* CD16 or other common ligands such as NKG2D-specific ligands for NK cells and $\gamma\delta$ T cells seems to be promising (75).

ETHICS STATEMENT

Patient cohorts leukocyte concentrates from healthy adult blood donors were obtained from the Department of Transfusion Medicine of the University Hospital Schleswig-Holstein (UKSH) in Kiel, Germany. Heparinized blood was drawn from HDs of the Institute of Immunology [UKSH, Christian-Albrechts University (CAU)], whereas blood from patients was obtained from the Department of General and Thoracic Surgery or the Clinic of Gynecology and Obstetrics, both of the UKSH in Kiel. In accordance with the Declaration of Helsinki, written informed consent was obtained from all donors, and the research was approved by the relevant institutional review boards (ethic committee of the Medical Faculty of the CAU to Kiel, code number: D405/10, D403/14, D404/14, AZ A157/11, AZ B3277/10).

AUTHOR CONTRIBUTIONS

HO, CK, MP, and DW performed the conception and the experimental design. The experiments, the analysis, and interpretation of the data and the preparation of the figures were done by HO, CK, MP, DG, and DW. SS and DB organized and provided the blood and tissue from PDAC and ovarian cancer patients, respectively. DK and MG provided the infrastructure for experimental set up and were helpful with the interpretation of the results. DW and HO wrote the manuscript. CK, MP, DK, SS, DB, DG, and MG revised the manuscript critically. All authors read and approved the final version of the manuscript.

ACKNOWLEDGMENTS

We gratefully acknowledge the technical assistance of Sandra Ussat and Anja Muskulus. We thank Liane Carstensen, Bianca Zinke, and Dr. Christian Röder for organizing and providing blood and tissue from PDAC patients. We also thank Frank Rösel, Sigrid Hamann, Doris Karkow, and Dr. Nina Hedemann for organizing and providing blood, ascites, and tissue from ovarian patients. Thanks to Sarah Habig for supporting us with

several ⁵¹Cr-release assays. Special thanks to Dr. Christian Röder for providing tumor samples, PDAC cell lines, and his help with the short tandem repeat analysis as well as to Dr. Jörg Weimer for polyploidy characterization of primary ovarian cancer cells by FISH. BrHPP was kindly provided by Innate Pharma (Marseille, France).

FUNDING

This work was supported by the Medical Faculty (DW), the Werner Klara-Kreitz Stiftung (DG/DW), DFG Ka502/16-1 (DK) and EXC 306 CL VII (DK). MP is supported by the Mildred-Scheel Professorship program of the Deutsche Krebshilfe (MP).

SUPPLEMENTARY MATERIAL

The Supplementary Material for this article can be found online at <https://www.frontiersin.org/articles/10.3389/fimmu.2018.00814/full#supplementary-material>.

FIGURE S1 | Impact of trastuzumab on cancer cells with different human epidermal growth factor receptor 2 (HER2) expression. **(A)** 5×10^3 Panc1 cells, 5×10^3 SK-OV-3 cells and 5×10^3 primary ovarian cancer OC11 [(i), green lines] had been cultured in 10 % FCS medium for 26 h in plates which measured the impedance of the adherent tumor cells with electronic sensors. Impedance is expressed as an arbitrary unit called cell index (CI) every 5 min, which was normalized to 1 shortly before the addition of substances as follows: 10 μ g/mL trastuzumab [(iii), brown line], PBL of healthy donors (E/T ratio 50:1) together with 50 IU/mL rIL-2 [(iv), purple line], or a combination of (iii) and (iv) as indicated [(v), blue line]. Triton-X-100 was added as positive control to induce maximal lysis [(ii), black line, positive control]. CI was then measured every minute for analysis of precise cytotoxicity time point for additional 40 h. The trastuzumab and/or PBL-mediated lysis of HER2-expressing tumor cells correlated with the loss of tumor cell impedance and thus a decrease of the normalized CI. The average of triplicates and SD are presented; one representative experiment out of three is shown. **(B)** HER2 expression of Panc1 cells, SK-OV-3 cells as well as primary ovarian cancer cells OC11 was analyzed by staining the cells with 10 μ g/mL trastuzumab (grey histograms) and appropriate isotype controls (open black lines) as indicated, following by appropriate second step Ab and measuring by flow cytometry. Numbers indicate the median fluorescence intensity of the appropriate staining with trastuzumab.

FIGURE S2 | Control constructs and tribody [(HER2)₂xCD16] did not modulate impedance of tumor cells. 5×10^3 pancreatic ductal adenocarcinoma cells (Panc89 and PancTu-I) were cultured with medium (green line), control constructs such as 1 μ g/mL tribody [(HER2)₂xCD89] (purple line) or [(CD20)₂xCD16] (light blue line), respectively or 1 μ g/mL [(HER2)₂xCD16] (red line) or with Triton-X-100 (black line) for the indicated time points. The cell index (CI) was analyzed in 5 min steps over ~24 h and in 1 min steps after 24 h. The average of three replicates with SD is presented for each tumor cell line in independent experiments.

FIGURE S3 | Analysis of CD16 expression on short-term activated $\gamma\delta$ T cells. For flow cytometric analysis, a gate was set on expanded V δ 2 $\gamma\delta$ T cells with a purity of >95% (based on forward and side scatter properties to exclude dead cells) and on pan T cell receptor $\gamma\delta$ -positive cells to determine the relative percentage of CD16-expressing V δ 2 $\gamma\delta$ -positive T cells from healthy donors ($n = 11$) and from pancreatic ductal adenocarcinoma patients ($n = 11$). Each symbol presents the data of one donor, and the thick bars represent the mean value of different experiments. Statistical analysis was performed by *t* test. Significances are shown as *P* value; **P* < 0.05.

FIGURE S4 | $\gamma\delta$ T cell cytotoxicity against human epidermal growth factor receptor 2 (HER2)-positive PancTu-I cells and HER2-negative Raji cells with

tribody [(HER2)₂×CD16]. Vγ9Vδ2 γδ T cell lines of three healthy donors were co-cultured with complete medium (no bispecific antibodies), 1 μg/mL control tribody [(CD20)₂×CD16] or 1 μg/mL tribody [(HER2)₂×CD16] in the presence or absence of 300 nM phosphoantigen bromohydrin-pyrophosphate as indicated. γδ T cell lines at the indicated E/T ratios were added to ⁵¹Cr-labeled HER2-positive PancTu-1 cells or HER2-negative Raji cells for 4 h. Each bar represents the mean value of three independent donors in triplicate assays. Statistical analysis was performed by ANOVA. Significances are shown as *P* value; **P* < 0.05 and ***P* < 0.01.

FIGURE S5 | Tribody [(HER2)₂×CD16] enhanced lysis of human epidermal growth factor receptor 2 (HER2)-expressing cancer cells in comparison to trastuzumab. 5 × 10³ Panc89 cells or esophageal cell line OE33 were cultured overnight in complete medium. After reaching the linear growth phase, Vγ9Vδ2

T cell lines at the indicated E/T ratio and substances were added as follows: without effector cells: complete medium (green line) or Triton-X-100 (black line); with effector cells and 12.5 IU/mL rIL-2 in medium (orange line), with 10 μg/mL trastuzumab (blue line), or with 1 μg/mL tribody [(HER2)₂×CD16] (red line). The cell index was analyzed in 5 min steps over ~28–53 h and after normalization to 1 (after addition of PBL ± substances) in 1 min steps for >10 h. The average of three replicates with SD is represented for each tumor cell line with effector cells of one representative healthy donor (in independent experiments (left panel). For validation, experiments were replicated several times under equal conditions using different Vγ9Vδ2 T cell lines of different donors in independent experiments (right panel). The cytotoxic capacity of Vγ9Vδ2 T cell lines against the indicated tumor cells calculated 4 h after addition of effector cells as % of specific lysis compared to control sample (green line) and maximal lysis (black line). Statistical analysis was performed by *t* test. Significances are shown as *P* value; ***P* < 0.01.

REFERENCES

- Rimawi MF, Shetty PB, Weiss HL, Schiff R, Osborne CK, Chamness GC, et al. Epidermal growth factor receptor expression in breast cancer association with biologic phenotype and clinical outcomes. *Cancer* (2010) 116:1234–42. doi:10.1002/cncr.24816
- Singh JC, Jhaveri K, Esteva FJ. HER2-positive advanced breast cancer: optimizing patient outcomes and opportunities for drug development. *Br J Cancer* (2014) 111:1888–98. doi:10.1038/bjc.2014.388
- Loibl S, Gianni L. HER2-positive breast cancer. *Lancet* (2017) 389:2415–29. doi:10.1016/S0140-6736(16)32417-5
- Babar T, Blomberg C, Hoffner E, Yan X. Anti-HER2 cancer therapy and cardiotoxicity. *Curr Pharm Des* (2014) 20:4911–9. doi:10.2174/1381612820666140604145037
- Nocera NF, Lee MC, De La Cruz LM, Roseblit C, Czerniecki BJ. Restoring lost anti-HER-2 Th1 immunity in breast cancer: a crucial role for Th1 cytokines in therapy and prevention. *Front Pharmacol* (2016) 7:356. doi:10.3389/fphar.2016.00356
- English DP, Roque DM, Santin AD. HER2 expression beyond breast cancer: therapeutic implications for gynecologic malignancies. *Mol Diagn Ther* (2013) 17:85–99. doi:10.1007/s40291-013-0024-9
- Miller K, Cortes J, Hurvitz SA, Krop IE, Tripathy D, Verma S, et al. HERMIONE: a randomized phase 2 trial of MM-302 plus trastuzumab versus chemotherapy of physician's choice plus trastuzumab in patients with previously treated, anthracycline-naïve, HER2-positive, locally advanced/metastatic breast cancer. *BMC Cancer* (2016) 16:352. doi:10.1186/s12885-016-2385-z
- Tripathy D. Capecitabine in combination with novel targeted agents in the management of metastatic breast cancer: underlying rationale and results of clinical trials. *Oncologist* (2007) 12:375–89. doi:10.1634/theoncologist.12-4-375
- de Mello RA, Marques AM, Araujo A. HER2 therapies and gastric cancer: a step forward. *World J Gastroenterol* (2013) 19:6165–9. doi:10.3748/wjg.v19.i37.6165
- Spellman A, Tang SC. Immunotherapy for breast cancer: past, present, and future. *Cancer Metastasis Rev* (2016) 35:525–46. doi:10.1007/s10555-016-9654-9
- Swain SM, Baselga J, Kim SB, Ro J, Semiglazov V, Campone M, et al. Pertuzumab, trastuzumab, and docetaxel in HER2-positive metastatic breast cancer. *N Engl J Med* (2015) 372:724–34. doi:10.1056/NEJMoa1413513
- Baselga J, Bradbury I, Eidtmann H, Di CS, de AE, Aura C, et al. Lapatinib with trastuzumab for HER2-positive early breast cancer (NeoALTTO): a randomised, open-label, multicentre, phase 3 trial. *Lancet* (2012) 379:633–40. doi:10.1016/S0140-6736(11)61847-3
- Sadeghi S, Olevsky O, Hurvitz SA. Profiling and targeting HER2-positive breast cancer using trastuzumab emtansine. *Pharmgenomics Pers Med* (2014) 7:329–38. doi:10.2147/PGPM.S47524
- Lewis Phillips GD, Li G, Dugger DL, Crocker LM, Parsons KL, Mai E, et al. Targeting HER2-positive breast cancer with trastuzumab-DM1, an antibody-cytotoxic drug conjugate. *Cancer Res* (2008) 68:9280–90. doi:10.1158/0008-5472.CAN-08-1776
- Carter P, Presta L, Gorman CM, Ridgway JB, Henner D, Wong WL, et al. Humanization of an anti-p185HER2 antibody for human cancer therapy. *Proc Natl Acad Sci U S A* (1992) 89:4285–9. doi:10.1073/pnas.89.10.4285
- Carter PJ, Lazar GA. Next generation antibody drugs: pursuit of the 'high-hanging fruit'. *Nat Rev Drug Discov* (2017) 17:197–223. doi:10.1038/nrd.2017.227
- Musolino A, Naldi N, Bortesi B, Pezzuolo D, Capelletti M, Missale G, et al. Immunoglobulin G fragment C receptor polymorphisms and clinical efficacy of trastuzumab-based therapy in patients with HER-2/neu-positive metastatic breast cancer. *J Clin Oncol* (2008) 26:1789–96. doi:10.1200/JCO.2007.14.8957
- Seidel UJ, Schlegel P, Lang P. Natural killer cell mediated antibody-dependent cellular cytotoxicity in tumor immunotherapy with therapeutic antibodies. *Front Immunol* (2013) 4:76. doi:10.3389/fimmu.2013.00076
- Tokuyama H, Hagi T, Mattarollo SR, Morley J, Wang Q, So HF, et al. Vγ9 Vδ2 T cell cytotoxicity against tumor cells is enhanced by monoclonal antibody drugs – rituximab and trastuzumab. *Int J Cancer* (2008) 122:2526–34. doi:10.1002/ijc.23365
- Muntasell A, Cabo M, Servitja S, Tusquets I, Martinez-Garcia M, Rovira A, et al. Interplay between natural killer cells and anti-HER2 antibodies: perspectives for breast cancer immunotherapy. *Front Immunol* (2017) 8:1544. doi:10.3389/fimmu.2017.01544
- Capietto AH, Martinet L, Fournie JJ. Stimulated γδ T cells increase the in vivo efficacy of trastuzumab in HER-2+ breast cancer. *J Immunol* (2011) 187:1031–8. doi:10.4049/jimmunol.1100681
- Cartron G, Dacheux L, Salles G, Solal-Celigny P, Bardos P, Colombat P, et al. Therapeutic activity of humanized anti-CD20 monoclonal antibody and polymorphism in IgG Fc receptor Fc γRIIIa gene. *Blood* (2002) 99:754–8. doi:10.1182/blood.V99.3.754
- Kellner C, Otte A, Cappuzzello E, Klaus K, Peipp M. Modulating cytotoxic effector functions by Fc engineering to improve cancer therapy. *Transfus Med Hemother* (2017) 44:327–36. doi:10.1159/000479980
- Brinkmann U, Kontermann RE. The making of bispecific antibodies. *MAbs* (2017) 9:182–212. doi:10.1080/19420862.2016.1268307
- Bargou R, Leo E, Zugmaier G, Klinger M, Goebeler M, Knop S, et al. Tumor regression in cancer patients by very low doses of a T cell-engaging antibody. *Science* (2008) 321:974–7. doi:10.1126/science.1158545
- Topp MS, Gokbuget N, Zugmaier G, Klappers P, Stelljes M, Neumann S, et al. Phase II trial of the anti-CD19 bispecific T cell-engager blinatumomab shows hematologic and molecular remissions in patients with relapsed or refractory B-precursor acute lymphoblastic leukemia. *J Clin Oncol* (2014) 32:4134–40. doi:10.1200/JCO.2014.56.3247
- Jager M, Schoberth A, Ruf P, Hess J, Hennig M, Schmalfeldt B, et al. Immunomonitoring results of a phase II/III study of malignant ascites patients treated with the trifunctional antibody catumaxomab (anti-EpCAM x anti-CD3). *Cancer Res* (2012) 72:24–32. doi:10.1158/0008-5472.CAN-11-2235
- Ishiguro T, Sano Y, Komatsu SI, Kamata-Sakurai M, Kaneko A, Kinoshita Y, et al. An anti-glypican 3/CD3 bispecific T cell-redirecting antibody for treatment of solid tumors. *Sci Transl Med* (2017) 9:eal4291. doi:10.1126/scitranslmed.aal4291
- Yu S, Li A, Liu Q, Yuan X, Xu H, Jiao D, et al. Recent advances of bispecific antibodies in solid tumors. *J Hematol Oncol* (2017) 10:155. doi:10.1186/s13045-017-0522-z
- Shahied LS, Tang Y, Alpaugh RK, Somer R, Greenspon D, Weiner LM. Bispecific minibodies targeting HER2/neu and CD16 exhibit improved tumor

- lysis when placed in a divalent tumor antigen binding format. *J Biol Chem* (2004) 279:53907–14. doi:10.1074/jbc.M407888200
31. Weiner LM, Harvey E, Padavic-Shaller K, Willson JK, Walsh C, LaCreta F, et al. Phase II multicenter evaluation of prolonged murine monoclonal antibody 17-1A therapy in pancreatic carcinoma. *J Immunother Emphasis Tumor Immunol* (1993) 13:110–6. doi:10.1097/00002371-199302000-00005
 32. McCall AM, Adams GP, Amoroso AR, Nielsen UB, Zhang L, Horak E, et al. Isolation and characterization of an anti-CD16 single-chain Fv fragment and construction of an anti-HER2/neu/anti-CD16 bispecific scFv that triggers CD16-dependent tumor cytotoxicity. *Mol Immunol* (1999) 36:433–45. doi:10.1016/S0161-5890(99)00057-7
 33. Brandes M, Willmann K, Bioley G, Levy N, Eberl M, Luo M, et al. Cross-presenting human $\gamma\delta$ T cells induce robust CD8+ $\alpha\beta$ T cell responses. *Proc Natl Acad Sci U S A* (2009) 106:2307–12. doi:10.1073/pnas.0810059106
 34. Himoudi N, Morgenstern DA, Yan M, Vernay B, Saraiva L, Wu Y, et al. Human $\gamma\delta$ T lymphocytes are licensed for professional antigen presentation by interaction with opsonized target cells. *J Immunol* (2012) 188:1708–16. doi:10.4049/jimmunol.1102654
 35. Oberg HH, Kellner C, Peipp M, Sebens S, Adam-Klages S, Gramatzki M, et al. Monitoring circulating $\gamma\delta$ T cells in cancer patients to optimize $\gamma\delta$ T cell-based immunotherapy. *Front Immunol* (2014) 5:643. doi:10.3389/fimmu.2014.00643
 36. Wilhelm M, Smetak M, Schaefer-Eckart K, Kimmel B, Birkmann J, Einsele H, et al. Successful adoptive transfer and in vivo expansion of haploidentical $\gamma\delta$ T cells. *J Transl Med* (2014) 12:45. doi:10.1186/1479-5876-12-45
 37. Harder J, Ihorst G, Heinemann V, Hofheinz R, Moehler M, Buechler P, et al. Multicentre phase II trial of trastuzumab and capecitabine in patients with HER2 overexpressing metastatic pancreatic cancer. *Br J Cancer* (2012) 106:1033–8. doi:10.1038/bjc.2012.18
 38. Oberg HH, Peipp M, Kellner C, Sebens S, Krause S, Petrick D, et al. Novel bispecific antibodies increase $\gamma\delta$ T-cell cytotoxicity against pancreatic cancer cells. *Cancer Res* (2014) 74:1349–60. doi:10.1158/0008-5472.CAN-13-0675
 39. Leung L, Radulovich N, Zhu CQ, Organ S, Bandarchi B, Pintilie M, et al. Lipocalin2 promotes invasion, tumorigenicity and gemcitabine resistance in pancreatic ductal adenocarcinoma. *PLoS One* (2012) 7:e46677. doi:10.1371/journal.pone.0046677
 40. Luo Z, Wang Q, Lau WB, Lau B, Xu L, Zhao L, et al. Tumor microenvironment: the culprit for ovarian cancer metastasis? *Cancer Lett* (2016) 377:174–82. doi:10.1016/j.canlet.2016.04.038
 41. Gershenson DM, Sun CC, Bodurka D, Coleman RL, Lu KH, Sood AK, et al. Recurrent low-grade serous ovarian carcinoma is relatively chemoresistant. *Gynecol Oncol* (2009) 114:48–52. doi:10.1016/j.ygyno.2009.03.001
 42. Kabelitz D, Wesch D, Pitters E, Zoller M. Characterization of tumor reactivity of human V γ 9V δ 2 $\gamma\delta$ T cells in vitro and in SCID mice in vivo. *J Immunol* (2004) 173:6767–76. doi:10.4049/jimmunol.173.11.6767
 43. Oberg HH, Kellner C, Gonnermann D, Peipp M, Peters C, Sebens S, et al. $\gamma\delta$ T cell activation by bispecific antibodies. *Cell Immunol* (2015) 296:41–9. doi:10.1016/j.cellimm.2015.04.009
 44. Acar-Perk B, Brautigam K, Grunewald R, Schmutzler A, Schem C, Arnold NK, et al. The t(14;15) in mouse strain CBA/CaH-T(14;15)6Ca/J causes a break in the ADAMTS12 gene. *Comp Med* (2010) 60:118–22.
 45. Glorius P, Baerenwaldt A, Kellner C, Staudinger M, Dechant M, Stauch M, et al. The novel tribody [(CD20)(2)xCD16] efficiently triggers effector cell-mediated lysis of malignant B cells. *Leukemia* (2013) 27:190–201. doi:10.1038/leu.2012.150
 46. Oberg HH, Grage-Griebenow E, Adam-Klages S, Jerg E, Peipp M, Kellner C, et al. Monitoring and functional characterization of the lymphocytic compartment in pancreatic ductal adenocarcinoma patients. *Pancreatol* (2016) 16:1069–79. doi:10.1016/j.pan.2016.07.008
 47. Roder C, Trauzold A, Kalthoff H. Impact of death receptor signaling on the malignancy of pancreatic ductal adenocarcinoma. *Eur J Cell Biol* (2011) 90:450–5. doi:10.1016/j.ejcb.2010.10.008
 48. Schmidt T, Jonat W, Wesch D, Oberg HH, Adam-Klages S, Keller L, et al. Influence of physical activity on the immune system in breast cancer patients during chemotherapy. *J Cancer Res Clin Oncol* (2018) 144:579–86. doi:10.1007/s00432-017-2573-5
 49. de Melo GD, Jardim DL, Marchesi MS, Hortobagyi GN. Mechanisms of resistance and sensitivity to anti-HER2 therapies in HER2+ breast cancer. *Oncotarget* (2016) 7:64431–46. doi:10.18632/oncotarget.7043
 50. Capelan M, Pugliano L, de Azambuja E, Bozovic I, Saini KS, Sotiriou C, et al. Pertuzumab: new hope for patients with HER2-positive breast cancer. *Ann Oncol* (2013) 24:273–82. doi:10.1093/annonc/mds328
 51. Gianni L, Dafni U, Gelber RD, Azambuja E, Muehlbauer S, Goldhirsch A, et al. Treatment with trastuzumab for 1 year after adjuvant chemotherapy in patients with HER2-positive early breast cancer: a 4-year follow-up of a randomised controlled trial. *Lancet Oncol* (2011) 12:236–44. doi:10.1016/S1470-2045(11)70033-X
 52. Swain SM, Kim SB, Cortes J, Ro J, Semiglazov V, Campone M, et al. Pertuzumab, trastuzumab, and docetaxel for HER2-positive metastatic breast cancer (CLEOPATRA study): overall survival results from a randomised, double-blind, placebo-controlled, phase 3 study. *Lancet Oncol* (2013) 14:461–71. doi:10.1016/S1470-2045(13)70130-X
 53. Abramovitz M, Williams C, Loibl S, Leyland-Jones B. Dual blockade of HER-2 provides a greater magnitude of benefit in patients with hormone-negative versus hormone-positive breast cancer. *Clin Breast Cancer* (2016) 16:444–55. doi:10.1016/j.clbc.2016.06.004
 54. Satoh T, Bang YJ, Gotovkin EA, Hamamoto Y, Kang YK, Moiseyenko VM, et al. Quality of life in the trastuzumab for gastric cancer trial. *Oncologist* (2014) 19:712–9. doi:10.1634/theoncologist.2014-0058
 55. Gong J, Liu T, Fan Q, Bai L, Bi F, Qin S, et al. Optimal regimen of trastuzumab in combination with oxaliplatin/ capecitabine in first-line treatment of HER2-positive advanced gastric cancer (CGOG1001): a multicenter, phase II trial. *BMC Cancer* (2016) 16:68. doi:10.1186/s12885-016-2092-9
 56. Jewell E, Secord AA, Brotherton T, Berchuck A. Use of trastuzumab in the treatment of metastatic endometrial cancer. *Int J Gynecol Cancer* (2006) 16:1370–3. doi:10.1111/j.1525-1438.2006.00543.x
 57. Santin AD, Bellone S, Roman JJ, McKenney JK, Pecorelli S. Trastuzumab treatment in patients with advanced or recurrent endometrial carcinoma overexpressing HER2/neu. *Int J Gynaecol Obstet* (2008) 102:128–31. doi:10.1016/j.ijgo.2008.04.008
 58. Villella JA, Cohen S, Smith DH, Hibshoosh H, Hershman D. HER-2/neu overexpression in uterine papillary serous cancers and its possible therapeutic implications. *Int J Gynecol Cancer* (2006) 16:1897–902. doi:10.1111/j.1525-1438.2006.00664.x
 59. Bookman MA, Darcy KM, Clarke-Pearson D, Boothby RA, Horowitz IR. Evaluation of monoclonal humanized anti-HER2 antibody, trastuzumab, in patients with recurrent or refractory ovarian or primary peritoneal carcinoma with overexpression of HER2: a phase II trial of the Gynecologic Oncology Group. *J Clin Oncol* (2003) 21:283–90. doi:10.1200/JCO.2003.10.104
 60. Gajria D, Chandralapaty S. HER2-amplified breast cancer: mechanisms of trastuzumab resistance and novel targeted therapies. *Expert Rev Anticancer Ther* (2011) 11:263–75. doi:10.1586/era.10.226
 61. Scaltriti M, Rojo F, Ocana A, Anido J, Guzman M, Cortes J, et al. Expression of p95HER2, a truncated form of the HER2 receptor, and response to anti-HER2 therapies in breast cancer. *J Natl Cancer Inst* (2007) 99:628–38. doi:10.1093/jnci/djk134
 62. Guerrero-Zotano A, Mayer IA, Arteaga CL. PI3K/AKT/mTOR: role in breast cancer progression, drug resistance, and treatment. *Cancer Metastasis Rev* (2016) 35:515–24. doi:10.1007/s10555-016-9637-x
 63. Romee R, Foley B, Lenvik T, Wang Y, Zhang B, Ankarlo D, et al. NK cell CD16 surface expression and function is regulated by a disintegrin and metalloprotease-17 (ADAM17). *Blood* (2013) 121:3599–608. doi:10.1182/blood-2012-04-425397
 64. Braumuller H, Wieder T, Brenner E, Assmann S, Hahn M, Alkhaled M, et al. T-helper-1-cell cytokines drive cancer into senescence. *Nature* (2013) 494:361–5. doi:10.1038/nature11824
 65. Verma C, Eremin JM, Robins A, Bennett AJ, Cowley GP, El-Sheemy MA, et al. Abnormal T regulatory cells (Tregs: FOXP3+, CTLA-4+), myeloid-derived suppressor cells (MDSCs: monocytic, granulocytic) and polarised T helper cell profiles (Th1, Th2, Th17) in women with large and locally advanced breast cancers undergoing neoadjuvant chemotherapy (NAC) and surgery: failure of abolition of abnormal treg profile with treatment and correlation of treg levels with pathological response to NAC. *J Transl Med* (2013) 11:16. doi:10.1186/1479-5876-11-16

66. Krop IE, Kim SB, Martin AG, LoRusso PM, Ferrero JM, Badovinac-Crnjevic T, et al. Trastuzumab emtansine versus treatment of physician's choice in patients with previously treated HER2-positive metastatic breast cancer (TH3RESA): final overall survival results from a randomised open-label phase 3 trial. *Lancet Oncol* (2017) 18:743–54. doi:10.1016/S1470-2045(17)30313-3
67. Dieras V, Miles D, Verma S, Pegram M, Welslau M, Baselga J, et al. Trastuzumab emtansine versus capecitabine plus lapatinib in patients with previously treated HER2-positive advanced breast cancer (EMILIA): a descriptive analysis of final overall survival results from a randomised, open-label, phase 3 trial. *Lancet Oncol* (2017) 18:732–42. doi:10.1016/S1470-2045(17)30312-1
68. Doroshow DB, LoRusso PM. Trastuzumab emtansine: determining its role in management of HER2+ breast cancer. *Future Oncol* (2017) 14:589–602. doi:10.2217/fon-2017-0477
69. Datta J, Rosembli C, Berk E, Showalter L, Namjoshi P, Mick R, et al. Progressive loss of anti-HER2 CD4(+) T-helper type 1 response in breast tumorigenesis and the potential for immune restoration. *Oncimmunology* (2015) 4:e1022301. doi:10.1080/2162402X.2015.1022301
70. Datta J, Fracol M, McMillan MT, Berk E, Xu S, Goodman N, et al. Association of depressed anti-HER2 T-helper type 1 response with recurrence in patients with completely treated HER2-positive breast cancer: role for immune monitoring. *JAMA Oncol* (2016) 2:242–6. doi:10.1001/jamaoncol.2015.5482
71. Lowenfeld L, Zaheer S, Oechsle C, Fracol M, Datta J, Xu S, et al. Addition of anti-estrogen therapy to anti-HER2 dendritic cell vaccination improves regional nodal immune response and pathologic complete response rate in patients with ER(pos)/HER2(pos) early breast cancer. *Oncimmunology* (2017) 6:e1207032. doi:10.1080/2162402X.2016.1207032
72. Chitadze G, Oberg HH, Wesch D, Kabelitz D. The ambiguous role of $\gamma\delta$ T lymphocytes in antitumor immunity. *Trends Immunol* (2017) 38:668–78. doi:10.1016/j.it.2017.06.004
73. Wu Y, Wu W, Wong WM, Ward E, Thrasher AJ, Goldblatt D, et al. Human $\gamma\delta$ T cells: a lymphoid lineage cell capable of professional phagocytosis. *J Immunol* (2009) 183:5622–9. doi:10.4049/jimmunol.0901772
74. Sun R, Luo J, Li D, Shu Y, Luo C, Wang SS, et al. Neutrophils with protumor potential could efficiently suppress tumor growth after cytokine priming and in presence of normal NK cells. *Oncotarget* (2014) 5:12621–34. doi:10.18632/oncotarget.2181
75. Peipp M, Wesch D, Oberg HH, Lutz S, Muskulus A, van de Winkel JGJ, et al. CD20-specific immunoligands engaging NKG2D enhance $\gamma\delta$ T cell-mediated lysis of lymphoma cells. *Scand J Immunol* (2017) 86:196–206. doi:10.1111/sji.12581

Conflict of Interest Statement: The authors declare that the research was conducted in the absence of any commercial or financial relationships that could be construed as a potential conflict of interest.

The reviewer EL and handling Editor declared their shared affiliation.

Copyright © 2018 Oberg, Kellner, Gonnermann, Sebens, Bauerschlag, Gramatzki, Kabelitz, Peipp and Wesch. This is an open-access article distributed under the terms of the Creative Commons Attribution License (CC BY). The use, distribution or reproduction in other forums is permitted, provided the original author(s) and the copyright owner are credited and that the original publication in this journal is cited, in accordance with accepted academic practice. No use, distribution or reproduction is permitted which does not comply with these terms.