



Orally Administered *Salacia reticulata* Extract Reduces H1N1 Influenza Clinical Symptoms in Murine Lung Tissues Putatively Due to Enhanced Natural Killer Cell Activity

Gustavo A. Romero-Pérez¹, Masayo Egashira², Yuri Harada², Takeshi Tsuruta², Yuriko Oda³, Fumitaka Ueda³, Takamitsu Tsukahara^{1,2}, Yasuhiro Tsukamoto⁴ and Ryo Inoue^{2*}

¹Kyoto Institute of Nutrition and Pathology, Kyoto, Japan, ²Laboratory of Animal Science, Department of Agricultural and Life Sciences, Kyoto Prefectural University, Kyoto, Japan, ³Life Science Research Laboratories, Research and Development Management Headquarters, Fujifilm Corporation, Kanagawa, Japan, ⁴Laboratory of Animal Hygiene, Department of Agricultural and Life Sciences, Kyoto Prefectural University, Kyoto, Japan

OPEN ACCESS

Edited by:

Laurel L. Lenz,
University of Colorado School of
Medicine, USA

Reviewed by:

Diego A. Vargas-Inchaustegui,
National Cancer Institute, USA
Vijayakumar Velu,
Emory University, USA

*Correspondence:

Ryo Inoue
r-inoue@kpu.ac.jp

Specialty section:

This article was submitted to
Microbial Immunology,
a section of the journal
Frontiers in Immunology

Received: 08 December 2015

Accepted: 14 March 2016

Published: 31 March 2016

Citation:

Romero-Pérez GA, Egashira M,
Harada Y, Tsuruta T, Oda Y, Ueda F,
Tsukahara T, Tsukamoto Y and
Inoue R (2016) Orally Administered
Salacia reticulata Extract Reduces
H1N1 Influenza Clinical Symptoms in
Murine Lung Tissues Putatively Due
to Enhanced Natural Killer
Cell Activity.
Front. Immunol. 7:115.
doi: 10.3389/fimmu.2016.00115

Influenza is a major cause of respiratory tract infection. Although most cases do not require further hospitalization, influenza periodically causes epidemics in humans that can potentially infect and kill millions of people. To countermeasure this threat, new vaccines need to be developed annually to match emerging influenza viral strains with increased resistance to existing vaccines. Thus, there is a need for finding and developing new anti-influenza viral agents as alternatives to current treatments. Here, we tested the antiviral effects of an extract from the stems and roots of *Salacia reticulata* (SSRE), a plant rich in phytochemicals, such as salacinol, kotalanol, and catechins, on H1N1 influenza virus-infected mice. Following oral administration of 0.6 mg/day of SSRE, the incidence of coughing decreased in 80% of mice, and only one case of severe pulmonary inflammation was detected. Moreover, when compared with mice given *Lactobacillus casei* JCM1134, a strain previously shown to help increase *in vitro* natural killer (NK) cell activity, SSRE-administered mice showed greater and equal NK cell activity in splenocytes and pulmonary cells, respectively, at high effector cell:target cell ratios. Next, to test whether or not SSRE would exert protective effects against influenza in the absence of gut microbiota, mice were given antibiotics before being inoculated influenza virus and subsequently administered SSRE. SSRE administration induced an increase in NK cell activity in splenocytes and pulmonary cells at levels similar to those detected in mice not treated with antibiotics. Based on our results, it can be concluded that phytochemicals in the SSRE exerted protective effects against influenza infection putatively *via* modulation of the immune response, including enhancement of NK cell activity, although some protective effects were not necessarily through modulation of gut microbiota. Further investigation is necessary to elucidate the molecular mechanisms underlying the protective effects of SSRE against influenza infection.

Keywords: *Salacia reticulata* extract, H1N1 influenza virus, *Lactobacillus casei* JCM1134, antibiotics, gut microbiota, natural killer cells, splenocytes, pulmonary cells

INTRODUCTION

Influenza is a leading cause of respiratory tract infection (1). Influenza viruses are categorized as A, B, and C (2), and influenza A virus can be further subtyped as H3N2, H2N2, and H1N1. Every year, approximately 10% of the world's population is infected with influenza (3) that results in 250,000–500,000 deaths (4), but in most cases, the infection only lasts for 1–2 weeks without the need for hospitalization (4). Nonetheless, influenza viruses periodically cause epidemics in humans, such as the 2009 H1N1 pandemic in Mexico (5), which can potentially infect and kill millions of people. Thus, medication with antiviral agents that trigger an immune response and inhibit viral replication in infected patients is required to prevent further viral spread and higher mortality rates among the population.

Following an influenza viral infection, natural killer (NK) cells are reportedly activated by proinflammatory cytokines, such as interleukin-12 (6) and/or type I interferons (7), and cytotoxicity of NK cells is stimulated by interferon-gamma (IFN- γ) (8, 9). Since toxicity receptors NKp46 and NKp44 on human NK cells readily identify hemagglutinin and neuraminidase on the surface of influenza virus, NK cells alone have the potential of destroying infected cells (9). Nonetheless, impaired cytotoxicity and depletion of NK cells that lead to higher morbidity and mortality rates are often observed in influenza virus-infected subjects for reasons not yet fully understood (10). Hence, presently influenza viral infections are most efficiently prevented and controlled by vaccines that are mainly designed to mobilize a strain-specific antibody response to viral surface hemagglutinin or neuraminidase (2). Nevertheless, every year, new vaccines need to be developed to match emerging influenza viral strains with increased resistance to existing vaccines (11, 12). This challenge highlights the need for finding and developing new antiviral agents as alternatives to those currently available.

Although the human gut microflora is remarkably stable under dietary changes (13) and its composition is highly individualized (14), administration of lactic acid bacterial (LAB) strains, such as those found in fermented food products (15–17), has been shown to protect experimental models against influenza viral infections by enhancing the immune response (16–20). For example, continual consumption of a milk-based drink containing a *Lactobacillus brevis* strain was reported to lower the incidence of influenza in unvaccinated schoolchildren in Japan (15). These findings emphasize the potential of probiotics as complement to conventional vaccine-based approaches for treatment of influenza infection (21). Nonetheless, inconsistency in the survival rate of strains (22, 23) and lack of consensus on the effective doses (24, 25) are issues needed to be addressed before LAB can be considered reliable as therapeutic agents against viral infections.

A new generation of antiviral extracts from biological sources has shown promising effects against influenza virus. For example, Ladania067 from the leaves of black currant (*Ribes nigrum folium*) showed potent antiviral activity against influenza A/Regensburg/D6/09 (H1N1) (26), although efficacy observed 24 h after intranasal application *in vivo* was not higher than 85%. Likewise, a crude extract from *Cryptoporus volvatus*, a polypore fungus, showed

strong activity against H1N1/09 influenza viral infection in mice. Nonetheless, while *C. volvatus* extract indeed reduced virus loads in lungs and protected from a lethal viral dose, it failed to substantially decrease the virus titer (27). Although *Salacia* species have long been used as therapeutic agents in traditional medicine in Asia for treating disorders, such as diabetes, cancer, and immunosuppression (28, 29), the properties of *Salacia* species against viral infections have not been well characterized. Recently, in our premises, we observed that an extract from the bark and roots of *Salacia reticulata* induced an increase in activity of immune-related genes, including Cd26, IgG2a, TNF- α , and Ccl5 in intestinal epithelial cells (IEC) of Sprague-Dawley rats (30). Cd26 and IgG2a are involved in cell-mediated immunity (31) and the humoral immune response (32), and TNF- α and Ccl5 in the antiviral defense response (33), respectively, upon a challenge with influenza virus. Thus, it is likely that extracts from *S. reticulata* may induce a similar increase in immune cell activity after influenza virus infection.

In the present study, we first evaluated the effect of administration of an *S. reticulata* stem and root extract (SSRE) on lung damage caused by influenza viral infection. Next, we measured NK cell activity in spleen and lungs of influenza virus-infected mice to further assay the protective effect of administration of SSRE against influenza viral infection, and compared this effect with that exerted by a commercially available LAB strain. We also investigated the effect of SSRE on NK cell activity in spleen and lung cells of mice given a powerful antibiotic cocktail and inoculated with H1N1 influenza virus.

MATERIALS AND METHODS

Animals

Six-week-old ddY mice were purchased from Japan SLC (Shizuoka, Japan) and bred in a pathogen-free animal facility. Mice had *ad libitum* access to regular rodent chow (Lab MR stock; Nihon Nosan Kogyo, Tokyo, Japan) and water. Prior to experiments, all mice were allowed to acclimatize for 7 days. The experimental animals were handled in accordance with the guidelines for animal studies issued by the Experimental Animal Committee of Kyoto Prefectural University (Approval No. KPU270406).

Bacterial and Viral Strains

Lactobacillus casei JCM1134 was purchased from Japan Collection of Microorganisms (Tsukuba, Japan). *L. casei* was grown under anaerobic conditions at 37°C overnight in 10-mL Hungate tubes, with de Man, Rogosa, and Sharpe (MRS) broth as medium.

A murine influenza virus, A/PR/8/34/2009 (H1N1), was used for this study. Madin-Darby canine kidney cells were infected with the virus and after several passages, viral solutions were prepared and titrated as the tissue-culture-infective dose (TCID₅₀), according to a standard procedure (34, 35).

Preparation of the Hot Water Extract of *S. reticulata*

The stems and roots of *S. reticulata* grown in and imported from Sri Lanka were dehydrated and pulverized. The powdered

material was boiled in water at 90°C for an hour. The concoction was then filtered to remove any solid material, and the resulting filtrate was spray-dried (ADL-310, Yamato Science, Tokyo, Japan). The SSRE was stored at 4°C until further use.

Experimental Design

Experiment 1

Twelve mice were equally divided and allocated to two experimental groups. Mice were orally administered treatments as follows.

- (1) Control group treatment: 500 μ L of phosphate-buffered saline (PBS; 137 mM NaCl, 2.7 mM KCl, 10 mM Na₂HPO₄, and 1.8 mM KH₂PO₄; pH 7.4).
- (2) SSRE group treatment: 500 μ L of SSRE solution (1.2 mg of SSRE/mL of PBS).

Experiment 2

Eighteen mice were equally divided and allocated to three experimental groups. Mice were orally administered treatments as follows.

- (1) Control group treatment,
- (2) SSRE group treatment,
- (3) Probiotic group treatment: 10⁸ cfu of JCM1134 in 500 μ L of PBS.

Experiment 3

Eighteen mice were equally divided and allocated to three experimental groups. Mice were orally administered treatments as follows.

- (1) Antibiotic–control group (baseline group) treatment: antibiotics in drinking water [1 g/L of ampicillin (Nacalai Tesque, Kyoto, Japan), 500 mg/L of vancomycin (Wako Pure Chemicals, Osaka, Japan), 1 g/L neomycin sulfate (Sigma-Aldrich, Tokyo, Japan), and 1 g/L of metronidazole (Nacalai Tesque, Kyoto, Japan)] + control group treatment.
- (2) Antibiotic–SSRE group treatment: antibiotics + SSRE.
- (3) Normal microbiota group treatment: control group treatment.

In Experiment 3, administration of antibiotics started 3 days prior to administration of SSRE. Treatments in all experiments were administered once a day for 2 weeks. The humane endpoint was established at a body weight loss >20%, at which mice would be killed, as previously suggested (36).

Experimental Influenza Viral Infection to Mice

After completion of the treatment period, mice from all experiments were intranasally inoculated with 10⁵ TCID₅₀ of A/PR/8/34/2009 (H1N1) virus. Five days post-inoculation, mice were killed with an overdose of sodium pentobarbital

(Schering-Plough, K.K. Osaka, Japan). Except for tissues from Experiment 1, which were immersed immediately after removal in 10% neutral-buffered formalin and used for histopathology analysis, all murine lungs and spleen tissues of mice were collected and immediately used for further analyses.

Histopathology

Lung tissues of mice from Experiment 1 were used for this experiment. Lung tissues were embedded in paraffin, and 5- μ m sections were excised from bilateral posterior lobes and stained with hematoxylin and eosin (H&E). All samples were randomly numbered and examined by an experienced pathologist blinded to the study conditions. The pathologist used an Olympus microscope (Olympus Optical Co., Ltd., Tokyo, Japan) with a 100 \times magnification lens and scanned the entire surface area of each lung section.

Isolation of Splenocytes and Pulmonary Cells

Lung and spleen tissues were sectioned into small pieces and immersed in ice-cold Hanks buffered solution (HBSS, Nacalai Tesque, Kyoto, Japan). The pieces were gently pressed against sterile 70- μ m cell strainers (BD Biosciences Japan, Tokyo, Japan) to obtain single-cell suspensions, which were centrifuged at 500 \times g for 4 min at 4°C. The cell supernatant was retrieved, resuspended in ACK lysis buffer (0.5 mol/L of NH₄Cl, 10 mmol/L of KHCO₃, and 0.1 nmol/L of Na₂EDTA; pH 7.2), and incubated at room temperature for 5 min to remove erythrocytes. The remaining cells were washed twice with HBSS and resuspended in 1 mL of culture medium [RPMI medium (Nacalai Tesque) containing 10% fetal bovine serum (FBS), penicillin (100 U/mL, Sigma-Aldrich Japan, Tokyo, Japan), and streptomycin (100 μ g/mL; Sigma-Aldrich, Japan)]. Splenocytes and pulmonary cells were stained with trypan blue and counted with a TC10 automated cell counter (Bio-Rad, Richmond, CA, USA).

NK Activity of Splenocytes and Pulmonary Cells

A murine T cell lymphoma cell line, YAC-1, was obtained from RIKEN Bio-Resource Center (Ibaraki, Japan). YAC-1 cells were cultured in 75-cm² culture flasks containing 10 mL of culture media and incubated in a humidified chamber (37°C, 5% CO₂). After 3-day incubation, YAC-1 cells were stained for 15 min at 37°C with 10- μ M Dioc18 [3,3'-diocadecyloxycarbocyanine perchlorate (Life Technologies Japan, Tokyo, Japan)] to cause green fluorescence of cell membranes. YAC-1 cells were then washed twice with 1-mL HBSS and seeded in 100 μ L of culture media in 96-well culture plates (Orange Scientific, Tokyo, Japan) in a concentration of 1.0 \times 10⁴ cells (for coculture with splenocytes) or 5.0 \times 10³ cells (for coculture with pulmonary cells) per well.

Natural killer cell activity was assessed by a flow-cytometric method, as previously described (37, 38). For the NK activity assays, YAC-1 cells were used as target cells, and splenocytes and pulmonary cells as effector cells. One hundred microliters each of splenocyte and pulmonary cell suspensions were added to each well containing Dioc18-labeled YAC-1 cells to achieve 25:1 and 10:1, and 10:1 and 5:1 effector cell:target cell (E:T)

ratios, respectively. After incubation for 4 h, 10 μ L of ethidium monoazide bromide (EMA, 0.5 ng/mL, Sigma-Aldrich, Japan) solution was added to each well for nuclear staining of dead cells. The ethidium was bound to nuclei by photo affinity using a 26-W fluorescent light (5 cm distance) for 10 min at room temperature. After washing twice with PBS containing 0.5% BSA (Nacalai Tesque), the cells were fixed with 2% PFA overnight. Each sample was incubated in duplicate and analyzed using an Accuri C6 flow cytometer (Beckton Dickinson). During the data acquisition, a live gate was set in the FL1 histogram on the green fluorescent target cells to discriminate effector and target cells (Figures 1A,B). At least 2,000 target cells per sample were collected. The gated target cells were further analyzed with a dot plot of FL1 (green fluorescence) versus FL3 (red fluorescence) to calculate the percentage of EMA-positive dead cells.

The percentage of spontaneously lysed target cells was determined for DioC18-labeled YAC-1 cells incubated for 4 h in the absence of effector cells (Figure 1C), and the value was subtracted from the data of each sample. Spontaneous lysis of target cells ranged from 3 to 10% depending on the experiment. DioC18-labeled YAC-1 cells treated with 3% saponin were also stained with EMA and further analyzed to set the gate for discrimination of live and dead cells (Figure 1D). A representative dot plot image of the target cells after incubation with effector cells is shown in Figure 1E.

Statistical Analysis

Data of NK activity were analyzed by one-way ANOVA followed by Tukey HSD *post hoc* test to determine significant differences among the treatment groups. In all statistical analyses, differences

were considered significant if P values were <0.05 . All data were analyzed using freely available R software version 3.1.2 (<https://www.r-project.org/>).

RESULTS

Effect of Salacia Extract

Five days post-infection, mice infected with influenza virus showed noticeable clinical symptoms, including sneezing and coughing. Nonetheless, upon oral administration of 0.6 mg/day of SSRE, 80% of mice showed a decrease in the incidence of coughing (Table 1).

Histopathology

Histopathologically, pulmonary tissues of control mice showed typical acute influenza-associated pneumonia, as neutrophilic and lymphocyte infiltration was prominent in the alveoli and peri-bronchi (Figure 2A). Edema and cell debris were also noted. In contrast, pulmonary inflammation was clearly inhibited in mice in the SSRE group (Figure 2B), and the influenza cases in this group decreased from five severe to one severe and four moderate (Table 1).

NK Cell Activity Assays

Comparison between the Effects of Salacia Extract and Lactic Acid Bacteria Preparation

At the E:T ratio of 25:1, NK cell activity in splenocytes of SSRE-administered mice was significantly higher than that observed in splenocytes of mice given JCM1134 or in the control group

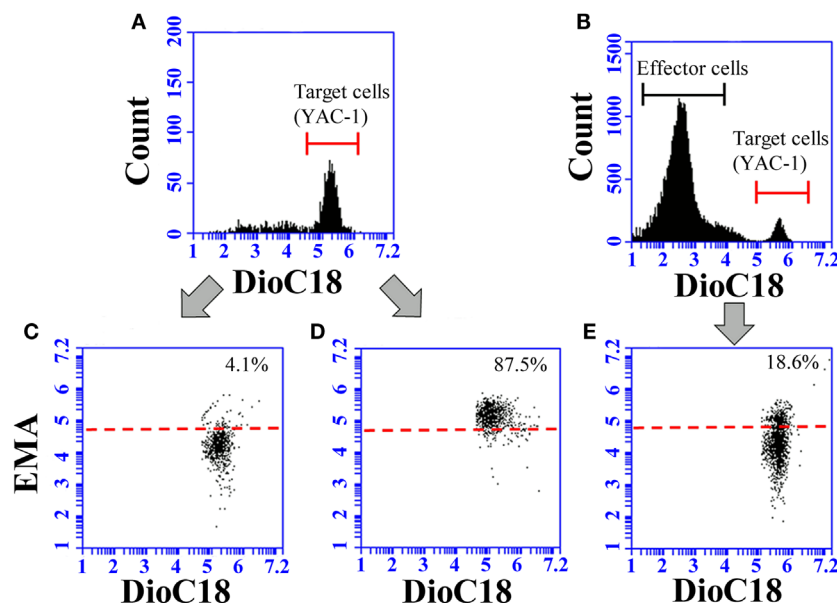


FIGURE 1 | Representative images of flow-cytometric analysis for the determination of NK activity. To discriminate the target cells, live gate (red line) was set in the FL1 histogram on the green fluorescent (A,B). The target cells were further analyzed with a dot plot of FL1 and FL3 (C–E). Spontaneous lysis of YAC-1 cells during the incubation was determined for DioC18-labeled YAC-1 cells incubated in the absence of effector cells (C). The gate for the discrimination of live and dead target cells (red dotted line) was set in accordance with the red fluorescence of DioC18-labeled YAC-1 cells treated with 3% saponin (D). The target cells lysed by effector cells appear in the gate for dead cells (E).

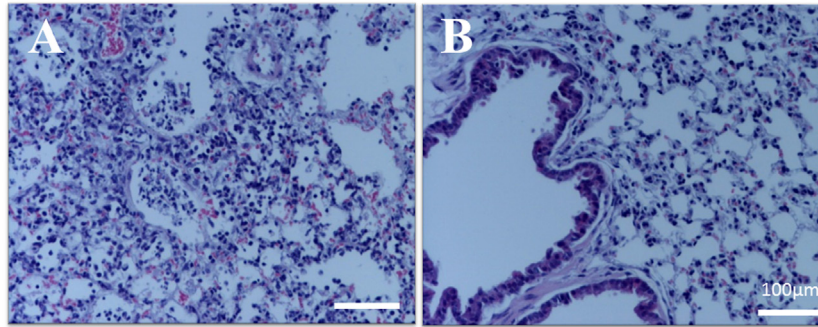


FIGURE 2 | Pulmonary histopathology of influenza virus-infected mice. Influenza virus-infected mice were administered an *S. reticulata* stem and root extract (SSRE), and their lung tissues were examined histopathologically 5 days post-viral infection. **(A)** Control group: pulmonary tissue sections from control mice show acute influenza pneumonia. In addition, infiltration of inflammatory cells, such as neutrophils and macrophages, can be observed in the alveoli, along with associated edema and cell debris. **(B)** SSRE group: only slight inflammation was observed in the pulmonary tissue sections of SSRE-administered mice.

TABLE 1 | Effect of *Salacia* stem and root extract on influenza virus-infected mice.

Treatment	Concentration (mg/day)	Infected mice	Viral dose (TCID ₅₀)	Number of mice				
				Symptoms		Pulmonary inflammation		
				Sneezing	Coughing	Normal	Moderate	Severe
Control	0	5	10 ⁶	1	5	0	0	5
SSRE	0.6	5	10 ⁶	1	1	0	4	1

SSRE, *S. reticulata* stem and root extract.

(Figure 3A). At the E:T ratio of 10:1, splenocytes of SSRE-administered mice had higher NK cell activity than did those of mice administered JCM1134, although this difference was not significantly higher than the NK cell activity detected in splenocytes of control mice (Figure 3B).

Regarding the NK cell activity in pulmonary cells, at the E:T ratio of 10:1, it increased in mice administered both SSRE and JCM1134 when compared with the NK cell activity in pulmonary cells of mice in the control group (Figure 4A). However, at the E:T ratio of 5:1, the NK cell activity was comparable across all treatment groups (Figure 4B).

Effect of *Salacia* Extract upon Administration of an Antibiotic Cocktail

The body weight of mice drastically decreased after antibiotic administration. As a result, most tissues, including spleen, were substantially small and thus, collecting a sufficient number of cells from them for the analyses proved difficult. Hence, to ensure reliability and based on the results from Experiment 2, it was decided to use splenocytes and pulmonary cells only at E:T ratios of 25:1 and 10:1, respectively.

At the 25:1 E:T ratio, SSRE administration induced an increase in NK cell activity in splenocytes of antibiotic-administered mice that reached a level similar to that detected in splenocytes of mice not treated with antibiotics (Figure 5A). Likewise, at the 10:1 E:T ratio, NK cell activity in pulmonary cells of antibiotic-treated mice was increased by SSRE administration to a level similar to that detected in splenocytes of mice not given the antibiotic cocktail (Figure 5B).

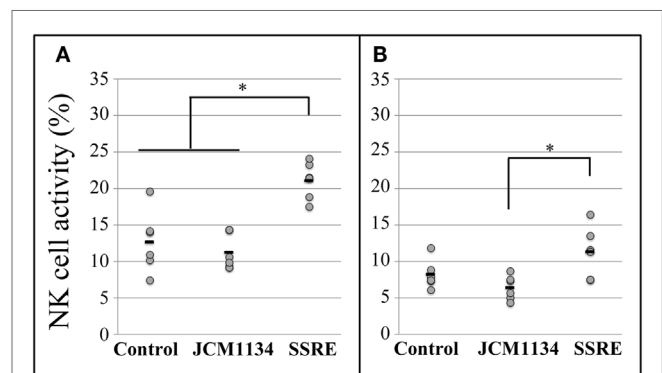
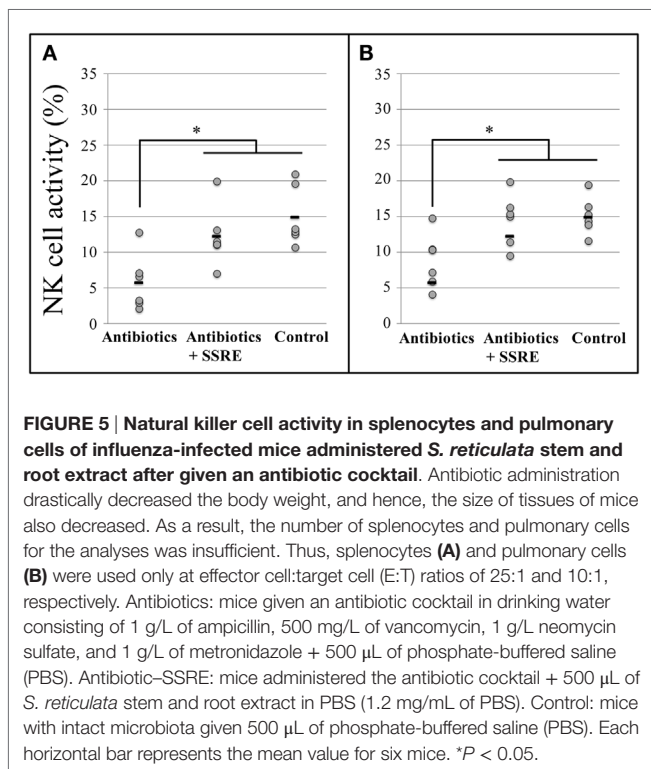
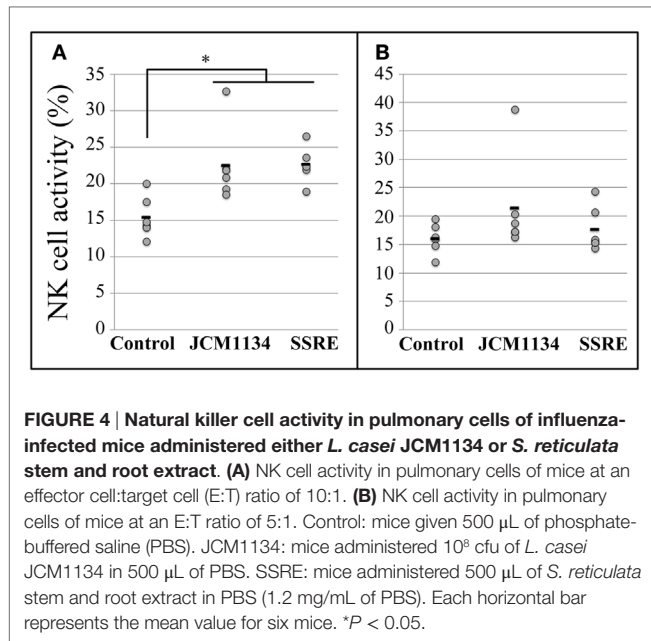


FIGURE 3 | Natural killer cell activity in splenocytes of influenza-infected mice administered either *L. casei* JCM1134 or *S. reticulata* stem and root extract. **(A)** NK cell activity in splenocytes of mice at an effector cell:target cell (E:T) ratio of 25:1. **(B)** NK cell activity in splenocytes of mice at an E:T ratio of 10:1. Control: mice given 500 µL of phosphate-buffered saline (PBS). JCM1134: mice administered 10⁸ cfu of *L. casei* JCM1134 in 500 µL of PBS. SSRE: mice administered 500 µL of *S. reticulata* stem and root extract in PBS (1.2 mg/mL of PBS). Each horizontal bar represents the mean value for six mice. **P* < 0.05.

DISCUSSION

Salacia species were previously found to have potential immunomodulatory properties for treating influenza *in vitro* (39, 40). At these premises, we also observed that administration of a bark



and root extract from *S. reticulata* triggered an antiviral immune response in rat ileum involving Cd26 and IgG2a (30). Therefore, we wanted to test whether SSRE would trigger similar immune responses in H1N1 influenza-inoculated mice.

Excessive production of immune cells, such as neutrophils and lymphocytes, during influenza infection often leads to severe lung inflammation (41). In contrast, our results showed that upon

SSRE administration, pulmonary inflammation of lung tissues markedly decreased (Figure 2B) and cough scores improved (Table 1) in influenza-inoculated mice. Similar effects were previously reported in influenza virus-infected mice that administered a compound prepared with extracts from plant roots and rice grains (42). It is very likely that SSRE was effective in reducing production of immune cells by inhibiting influenza viral replication. For example, in previous work, it was reported that *Salvia chinensis* inhibited the binding of viral double stranded RNA and non-structural protein 1 (39) expressed in nuclei of H5N1 virus-infected cells (43). Non-structural protein 1 is essential for the virus replication cycle (44), blocks gene expression (45), and antagonizes innate immune response (46) initiated in host cells.

In the present study, we focused on NK cell activity to further evaluate the protective effect of SSRE against H1N1 influenza virus-infected mice. NK cells are the first line of defense against influenza infection (7). However, if NK cell activity is not regulated, healthy cells may also be damaged by NK cell cytotoxicity (47). While we observed that SSRE administration substantially enhanced NK cell activity, histological observation confirmed that there was no excessive infiltration of cells in lung tissues of SSRE-administered mice. Hence, we believe that although SSRE administration induced an increase in NK cell activity, it also activated regulatory processes that maintained the number of NK cells produced under control. A preliminary experiment conducted in our laboratory provided further evidence for this theory, as it suggested that SSRE administration did not alter NK cell activity in splenocyte and pulmonary cells of healthy mice, that is, mice not infected with influenza virus (data not shown). In other words, this result seems to indicate an absence of overstimulation by SSRE of NK cell activity under healthy conditions. Our results also showed that at high E:T ratios, NK cell activity was enhanced in splenocytes and pulmonary cells of SSRE-administered mice, but at lower E:T ratios, NK cell activity was not different across treatment groups. During viral infections, cell-to-cell contact between NK cells and infected cells downregulates receptors on NK cell surface, such as NKG2D and Nkp30, which inhibits NK cell activity *in vivo* (48). Thus, high effector/target ratios at primary infection sites are required for an effective immune protection (49), which is consistent with our results.

In Experiments 1 and 2, it is very probable that gut microbiota of mice played a role in the effects observed after administration of SSRE. Evidence suggests that during viral infection, gut microbiota helps reduce host susceptibility by exerting *colonization resistance* (50) to prevent adhesion of pathogens and maintain immune homeostasis. Indeed, gut microbiota has been suggested to upregulate the expression of NK cell surface ligands on IEC when microbiota imbalance and intestinal inflammation are detected (51). Influenza virus infection, however, can severely alter the composition of gut microbiota and disrupt gut homeostasis. For example, previous studies showed that influenza virus infection increased exposure of galactose and mannose residues on IEC surfaces and hence overexpression of glycoreceptors, which increased adhesion of pathogens and caused an elevated production of proinflammatory cytokines (52).

Certain LAB strains with probiotic activity also show antiviral properties. Moreover, LAB supplementation to influenza-infected models has been reported to help protect against influenza infections. For example, LAB preparations were demonstrated to modulate immune responses in influenza virus-infected mice (16–19), which resulted in lower virus titer (16) and improved clinical symptoms (20). Therefore, to estimate the immunomodulatory properties of SSRE, in Experiment 2, we tested SSRE against JCM1134, a bacterial strain previously used elsewhere as adjuvant to help increase *in vitro* NK cell activity (53). Interestingly, our results showed that NK cell activity induced by SSRE was similar to or greater than that induced by JCM1134, especially in spleen, which suggests that SSRE could be used as an alternative or complement to LAB supplementation to treat influenza infections.

Although detailed investigation of the molecular mechanisms of action of individual active ingredients in SSRE was beyond the scope of the present work, two routes can be theorized. *S. reticulata* is rich in phytochemicals with immunomodulatory properties, such as polyphenols salacinol, kotalanol (54, 55), epigallocatechin, and epicatechin (56). Thus, one route may have been an indirect effect by salacinol and kotalanol. Salacinol and kotalanol likely inhibited disaccharidases, including α -glucosidase, in the gut of mice (54, 55, 57), which altered the composition of gut microbiota, such as the ratio between firmicutes and bacteroidetes (30). This shift in microbial composition resulted in an increased release of activated cytokines, such as NKT cell-induced IFN- γ in IEC (9).

An alternative route may have been a more direct effect of phytochemicals in SSRE, as they were likely absorbed unaltered. Indeed, phytochemicals, such as catechins, may have stimulated NK cell immune surveillance levels (58) which, upon detection of viral particles, inhibited further replication of influenza virus (59). To test this alternative route, in Experiment 3, mice were administered SSRE after being given a powerful antibiotic cocktail and inoculated with influenza virus. We confirmed by fecal smear assays that the antibiotic cocktail removed most gut microbiota, because at the start and end of SSRE/PBS administration, only a negligible number of bacteria were found in feces of antibiotic-administered mice (data not shown). Moreover, as expected, the sole administration of antibiotics drastically inhibited NK activity in mice (Figure 5), the result of which was chosen as baseline to test the effect of SSRE administration. The significant reduction in NK activity detected in microbiota-deprived mice was likely due to the microbiota composition was severely altered by the antibiotic administration (60), which in turn caused downregulation of gene expression and disruption

of the immune response (61). Antibiotics, such as azithromycin (62) and neomycin (63), reportedly suppress NK cell cytotoxicity and vancomycin decreases IFN- γ levels (51). Thus, the fact that the administration of SSRE increased NK cell activity to normal levels in splenocytes and pulmonary cells of microbiota-deprived mice was somewhat unexpected (Figures 5A,B). These results strongly suggest that phytochemicals in SSRE, possibly catechins, stimulated without mediation of gut microbiota an increase in NK cell activity in spleen and lungs. Moreover, these results are in concordance with previous work reporting the effectivity of a mixed extract from three edible plants, namely, *Angelica radix*, *Cnidium rhizome*, and *Paeonia radix*, in helping restore the proliferative response, cytokine production, and NK cell activity in splenocytes of aged mice with impaired immune response (64). Further investigation of the antiviral activity of phytochemicals in *S. reticulata* is needed to determine the underlying molecular mechanisms of action against influenza infection.

In summary, in the present work, we assayed the antiviral properties of an extract from stems and roots of *S. reticulata*. We showed that SSRE administration markedly reduced clinical symptoms and immune cells infiltration in lung tissues of influenza virus-infected mice. In addition, SSRE administration induced an increase in NK cell activity in splenocytes and pulmonary cells of mice equal to or greater than that observed in JCM1134-administered mice. The enhancement of NK cell activity by SSRE may contribute at least to some extent to the attenuation of lung damage observed in Experiment 1. Furthermore, when SSRE was given to mice deprived of gut microbiota by an antibiotic cocktail, NK cell activity was increased to a level similar to that observed in mice not given antibiotics. It can be reasonably concluded that at least some of the protective effects exerted by phytochemicals in SSRE against influenza infection were not necessarily through modulation of gut microbiota, but the underlying molecular mechanisms need to be further elucidated.

AUTHOR CONTRIBUTIONS

GR-P: wrote the paper, analyzed the data, helped complete the experiments, and prepared and edited figures and tables. ME, YH and TTsuruta: carried out the experiments. YO and FU: conceived the experiment and prepared the experimental material (*Salacia*). TTsukahara: conceived and co-designed the experiment. YT: conceived and co-designed the experiment and prepared influenza virus inoculant. RI: conceived and co-designed the experiment, supported during the experiments, co-wrote the paper, and supervised data analysis.

REFERENCES

- Paget C, Ivanov S, Fontaine J, Blanc F, Pichavant M, Renneson J, et al. Potential role of invariant NKT cells in the control of pulmonary inflammation and CD8+ T cell response during acute influenza A virus H3N2 pneumonia. *J Immunol* (2011) **186**(10):5590–602. doi:10.4049/jimmunol.1002348
- Prevato M, Cozzi R, Pezzicoli A, Taddei AR, Ferlenghi I, Nandi A, et al. An innovative pseudotypes-based enzyme-linked lectin assay for the measurement of functional anti-neuraminidase antibodies. *PLoS One* (2015) **10**(8):e0135383. doi:10.1371/journal.pone.0135383
- Rajasekaran D, Palombo EA, Chia Yeo T, Lim Siok Ley D, Lee Tu C, Malherbe F, et al. Identification of traditional medicinal plant extracts with novel anti-influenza activity. *PLoS One* (2013) **8**(11):e79293. doi:10.1371/journal.pone.0079293
- World Health Organization. *Influenza (Seasonal). Fact sheet No. 211* (2014) [cited 2015 Aug 24]. Available from: <http://www.who.int/mediacentre/factsheets/fs211/en/>

5. Thomson CA, Wang Y, Jackson L, Olson M, Wang W, Liavonchanka A, et al. Pandemic H1N1 influenza infection and vaccination in humans induces cross-protective antibodies that target the hemagglutinin stem. *Front Immunol* (2012) **3**:87. doi:10.3389/fimmu.2012.00087
6. Lanier LL. Evolutionary struggles between NK cells and viruses. *Nat Rev Immunol* (2008) **8**(4):259–68. doi:10.1038/nri2276
7. Hwang I, Scott JM, Kakarla T, Duriancik DM, Choi S, Cho C, et al. Activation mechanisms of natural killer cells during influenza virus infection. *PLoS One* (2012) **7**(12):e51858. doi:10.1371/journal.pone.0051858
8. Carnaud C, Lee D, Donnars O, Park S-H, Beavis A, Koezuka Y, et al. Cutting edge: cross-talk between cells of the innate immune system: NKT cells rapidly activate NK cells. *J Immunol* (1999) **163**(9):4647–50.
9. Ishikawa H, Tanaka K, Kutsukake E, Fukui T, Sasaki H, Hata A, et al. IFN- γ production downstream of NKT cell activation in mice infected with influenza virus enhances the cytolytic activities of both NK cells and viral antigen-specific CD8+ T cells. *Virology* (2010) **407**(2):325–32. doi:10.1016/j.virol.2010.08.030
10. McAuley J, Kedzierska K, Brown L, Shanks D. Host immunological factors enhancing mortality of young adults during the 1918 influenza pandemic. *Front Immunol* (2015) **6**:419. doi:10.3389/fimmu.2015.00419
11. Monto AS. Viral susceptibility and the choice of influenza antivirals. *Clin Infect Dis* (2008) **47**(3):346–8. doi:10.1086/589749
12. Rappuoli R, Dormitzer PR. Influenza: options to improve pandemic preparation. *Science* (2012) **336**(6088):1531–3. doi:10.1126/science.1221466
13. Bartram HP, Scheppach W, Gerlach S, Ruckdeschel G, Kelber E, Kasper H. Does yogurt enriched with *Bifidobacterium longum* affect colonic microbiology and fecal metabolites in health subjects? *Am J Clin Nutr* (1994) **59**(2):428–32.
14. Benson AK, Kelly SA, Legge R, Ma F, Low SJ, Kim J, et al. Individuality in gut microbiota composition is a complex polygenic trait shaped by multiple environmental and host genetic factors. *Proc Natl Acad Sci U S A* (2010) **107**(44):18933–8. doi:10.1073/pnas.1007028107
15. Waki N, Matsumoto M, Fukui Y, Suganuma H. Effects of probiotic *Lactobacillus brevis* KB290 on incidence of influenza infection among schoolchildren: an open-label pilot study. *Lett Appl Microbiol* (2014) **59**(6):565–71. doi:10.1111/lam.12340
16. Yasui H, Kiyoshima J, Hori T. Reduction of influenza virus titer and protection against influenza virus infection in infant mice fed *Lactobacillus casei* Shirota. *Clin Diagn Lab Immunol* (2004) **11**(4):675–9. doi:10.1128/CDLI.11.4.675-679.2004
17. Yeo J-M, Lee H-J, Kim J-W, Lee J-B, Park S-Y, Choi I-S, et al. *Lactobacillus fermentum* CJL-112 protects mice against influenza virus infection by activating T-helper 1 and eliciting a protective immune response. *Int Immunopharmacol* (2014) **18**(1):50–4. doi:10.1016/j.intimp.2013.10.020
18. Goto H, Sagitani A, Ashida N, Kato S, Hirota T, Shinoda T, et al. Anti-influenza virus effects of both live and non-live *Lactobacillus acidophilus* L-92 accompanied by the activation of innate immunity. *Br J Nutr* (2013) **110**(10):1810–8. doi:10.1017/S0007114513001104
19. Kawase M, He F, Kubota A, Yoda K, Miyazawa K, Hiramatsu M. Heat-killed *Lactobacillus gasseri* TMC0356 protects mice against influenza virus infection by stimulating gut and respiratory immune responses. *FEMS Immunol Med Microbiol* (2012) **64**(2):280–8. doi:10.1111/j.1574-695X.2011.00903.x
20. Waki N, Yajima N, Suganuma H, Buddle BM, Luo D, Heiser A, et al. Oral administration of *Lactobacillus brevis* KB290 to mice alleviates clinical symptoms following influenza virus infection. *Lett Appl Microbiol* (2014) **58**(1):87–93. doi:10.1111/lam.12160
21. Inoue R, Tsukahara T, Matsukawa N, Watanabe T, Bukawa W, Nakayama K, et al. Rapid induction of an immune response in rat Peyer's Patch after oral administration of *Enterococcus faecalis* strain EC-12. *Biosci Biotechnol Biochem* (2013) **77**(4):863–6. doi:10.1271/bbb.120838
22. González-Rodríguez I, Ruiz L, Gueimonde M, Margolles A, Sánchez B. Factors involved in the colonization and survival of bifidobacteria in the gastrointestinal tract. *FEMS Microbiol Lett* (2013) **340**(1):1–10. doi:10.1111/1574-6968.12056
23. Guérin D, Vuilleumard JC, Subirade M. Protection of bifidobacteria encapsulated in polysaccharide-protein gel beads against gastric juice and bile. *J Food Prot* (2003) **66**(11):2076–84.
24. McFarland LV. Meta-analysis of probiotics for the prevention of antibiotic associated diarrhea and the treatment of *Clostridium difficile* disease. *Am J Gastroenterol* (2006) **101**(4):812–22. doi:10.1111/j.1572-0241.2006.00465.x
25. McFarland LV. Evidence-based review of probiotics for antibiotic-associated diarrhea and *Clostridium difficile* infections. *Anaerobe* (2009) **15**(6):274–80. doi:10.1016/j.anaerobe.2009.09.002
26. Haasbach E, Hartmayer C, Hettler A, Sarnecka A, Wulle U, Ehrhardt C, et al. Antiviral activity of *Ladania067*, an extract from wild black currant leaves against influenza A virus in vitro and in vivo. *Front Microbiol* (2014) **5**:171. doi:10.3389/fmicb.2014.00171
27. Gao L, Sun Y, Si J, Liu J, Sun G, Sun X, et al. *Cryptosporidium parvum* extract inhibits influenza virus replication in vitro and in vivo. *PLoS One* (2014) **9**(12):e113604. doi:10.1371/journal.pone.0113604
28. Deepak KGK, Giri PR, Kishor PBK, Surekha C. *Salacia* as an ayurvedic medicine with multiple targets in diabetes and obesity. *Ann Phytomed* (2015) **4**(1):46–53.
29. Malar CGR, Chellaram C. In vitro studies on antioxidant activity of stem extract of *Salacia oblonga* from Karnataka regions, India. *Pharm Lett* (2015) **7**(7):405–10.
30. Oda Y, Ueda F, Kamei A, Kakinuma C, Abe K. Biochemical investigation and gene expression analysis of the immunostimulatory functions of an edible *Salacia* extract in rat small intestine. *Biofactors* (2011) **37**(1):31–9. doi:10.1002/biof.132
31. Hatano R, Ohnuma K, Otsuka H, Komiya E, Taki I, Iwata S, et al. CD26-mediated induction of EGR2 and IL-10 as potential regulatory mechanism for CD26 costimulatory pathway. *J Immunol* (2015) **194**(3):960–72. doi:10.4049/jimmunol.1402143
32. Hovden AO, Cox RJ, Haaheim LR. Whole influenza virus vaccine is more immunogenic than split influenza virus vaccine and induces primarily an IgG2a response in BALB/c mice. *Scand J Immunol* (2005) **62**(1):36–44. doi:10.1111/j.1365-3083.2005.01633.x
33. Ramírez-Martínez G, Cruz-Lagunas A, Jiménez-Alvarez L, Espinosa E, Ortiz-Quintero B, Santos-Mendoza T, et al. Seasonal and pandemic influenza H1N1 viruses induce differential expression of SOCS-1 and RIG-I genes and cytokine/chemokine production in macrophages. *Cytokine* (2013) **62**(1):151–9. doi:10.1016/j.cyto.2013.01.018
34. Adachi K, Soejodono RD, Handharyani E, Inai M, Tsukamoto Y. Therapeutic trial of an endothelin receptor agonist for the highly pathogenic avian influenza A/H5N1 virus infection in chicks. *Health* (2014) **6**(19):2553–61. doi:10.4236/health.2014.619294
35. Reed LJ, Muench H. A simple method of estimating fifty percent end-points. *Am J Hyg* (1938) **27**(3):493–7.
36. Young SW, Roberts T, Johnson S, Dalton JP, Coleman B, Wiles S. Regional intrasosseous administration of prophylactic antibiotics is more effective than systemic administration in a mouse model of TKA. *Clin Orthop Relat Res* (2015) **473**(11):3573–84. doi:10.1007/s11999-015-4464-x
37. Huang H-Y, Chieh S-Y, Tso TK, Chien T-Y, Lin H-T, Tsai Y-C. Orally administered mycelial culture of *Phellinus linteus* exhibits antitumor effects in hepatoma cell-bearing mice. *J Ethnopharmacol* (2011) **133**(2):460–6. doi:10.1016/j.jep.2010.10.015
38. Chang L, Gusevitch GA, Chritton DBW, Folz JC, Lebeck LK, Nehlsen-Cannarella SL. Rapid flow cytometric assay for the assessment of natural killer cell activity. *J Immunol Methods* (1993) **166**(1):45–54. doi:10.1016/0022-1759(93)90327-4
39. Klaywong K, Khutrakul G, Choowongkorn K, Lekcharoensuk C, Petcharat N, Lekcharoensuk P. Screening for lead compounds and herbal extracts with potential anti-influenza viral activity. *Southeast Asian J Trop Med Public Health* (2014) **45**(1):62–74.
40. Maria John KM, Enkhtaivan G, Ayyanar M, Jin K, Yeon JB, Kim DH. Screening of ethnic medicinal plants of South India against influenza (H1N1) and their antioxidant activity. *Saudi J Biol Sci* (2015) **22**(2):191–7. doi:10.1016/j.sjbs.2014.09.009
41. McHugh KJ, Mandalapu S, Kolls JK, Ross TM, Alcorn JF. A novel outbred mouse model of 2009 pandemic influenza and bacterial co-infection severity. *PLoS One* (2013) **8**(12):e82865. doi:10.1371/journal.pone.0082865
42. Hokari R, Nagai T, Yamada H. In vivo anti-influenza virus activity of Japanese herbal (Kampo) medicine, “Shahakusan,” and its possible mode of action. *Evid Based Complement Alternat Med* (2012) **2012**:794970. doi:10.1155/2012/794970
43. Lin D, Lan J, Zhang Z. Structure and function of the NS1 protein of influenza A virus. *Acta Biochim Biophys Sin* (2007) **39**(3):155–62. doi:10.1111/j.1745-7270.2007.00263.x

44. Hale BG, Randall RE, Ortín J, Jackson D. The multifunctional NS1 protein of influenza A viruses. *J Gen Virol* (2008) **89**(10):2359–76. doi:10.1099/vir.0.2008/004606-0
45. Spesock A, Malur M, Hossain MJ, Chen L-M, Njaa BL, Davis CT, et al. The virulence of 1997 H5N1 influenza viruses in the mouse model is increased by correcting a defect in their NS1 proteins. *J Virol* (2011) **85**(14):7048–58. doi:10.1128/JVI.00417-11
46. Li Z, Jiang Y, Jiao P, Wang A, Zhao F, Tian G, et al. The NS1 gene contributes to the virulence of H5N1 avian influenza viruses. *J Virol* (2006) **80**(22):11115–23. doi:10.1128/JVI.00993-06
47. French AR, Yokoyama WM. Natural killer cells and autoimmunity. *Arthritis Res Ther* (2004) **6**(1):8–14. doi:10.1186/ar1034
48. Yoon JC, Lim J-B, Park JH, Lee JM. Cell-to-cell contact with hepatitis C virus-infected cells reduces functional capacity of natural killer cells. *J Virol* (2011) **85**(23):12557–69. doi:10.1128/JVI.00838-11
49. De Boer RJ. Understanding the failure of CD8+ T-cell vaccination against simian/human immunodeficiency virus. *J Virol* (2007) **81**(6):2838–48. doi:10.1128/jvi.01914-06
50. Pfeiffer JK, Sonnenburg JL. The intestinal microbiota and viral susceptibility. *Front Microbiol* (2011) **2**:92. doi:10.3389/fmicb.2011.00092
51. Hansen CHF, Holm TL, Krych Ł, Andresen L, Nielsen DS, Rune I, et al. Gut microbiota regulates NKG2D ligand expression on intestinal epithelial cells. *Eur J Immunol* (2013) **43**(2):447–57. doi:10.1002/eji.201242462
52. Aleandri M, Conte MP, Simonetti G, Panella S, Celestino I, Checconi P, et al. Influenza A virus infection of intestinal epithelial cells enhances the adhesion ability of Crohn's disease associated *Escherichia coli* strains. *PLoS One* (2015) **10**(2):e0117005. doi:10.1371/journal.pone.0117005
53. Ogawa T, Asai Y, Tamai R, Makimura Y, Sakamoto H, Hashikawa S, et al. Natural killer cell activities of synbiotic *Lactobacillus casei* ssp. *casei* in conjunction with dextran. *Clin Exp Immunol* (2006) **143**(1):103–9. doi:10.1111/j.1365-2249.2005.02975.x
54. Yoshikawa M, Murakami T, Shimada H, Matsuda H, Yamahara J, Tanabe G, et al. Salacinol, potent antidiabetic principle with unique thiosugar sulfonium sulfate structure from the ayurvedic traditional medicine *Salacia reticulata* in Sri Lanka and India. *Tetrahedron Lett* (1997) **38**(48):8367–70. doi:10.1016/S0040-4039(97)10270-2
55. Yoshikawa M, Murakami T, Yashiro K, Matsuda H. Kotalanol, a potent alpha-glucosidase inhibitor with thiosugar sulfonium sulfate structure, from antidiabetic ayurvedic medicine *Salacia reticulata*. *Chem Pharm Bull (Tokyo)* (1998) **46**:1339–40. doi:10.1248/cpb.46.1339
56. Yoshikawa M, Shimoda H, Nishida N, Takada M, Matsuda H. *Salacia reticulata* and its polyphenolic constituents with lipase inhibitory and lipolytic activities have mild antiobesity effects in rats. *J Nutr* (2002) **132**(7):1819–24.
57. Matsuda H, Morikawa T, Yoshikawa M. Antidiabetogenic constituents from several natural medicines. *Pure Appl Chem* (2002) **74**(7):1301–8. doi:10.1351/pac200274071301
58. Shimizu K, Kinouchi Shimizu N, Hakamata W, Unno K, Asai T, Oku N. Preventive effect of green tea catechins on experimental tumor metastasis in senescence-accelerated mice. *Biol Pharm Bull* (2010) **33**(1):117–21. doi:10.1248/bpb.33.117
59. Song J-M, Lee K-H, Seong B-L. Antiviral effect of catechins in green tea on influenza virus. *Antiviral Res* (2005) **68**(2):66–74. doi:10.1016/j.antiviral.2005.06.010
60. Dethlefsen L, Huse S, Sogin ML, Relman DA. The pervasive effects of an antibiotic on the human gut microbiota, as revealed by deep 16S rRNA sequencing. *PLoS Biol* (2008) **6**(11):e280. doi:10.1371/journal.pbio.0060280
61. Fujimura KE, Slusher NA, Cabana MD, Lynch SV. Role of the gut microbiota in defining human health. *Expert Rev Anti Infect Ther* (2010) **8**(4):435–54. doi:10.1586/eri.10.14
62. Lin S-J, Yan D-C, Lee W-I, Kuo M-L, Hsiao H-S, Lee P-Y. Effect of azithromycin on natural killer cell function. *Int Immunopharmacol* (2012) **13**(1):8–14. doi:10.1016/j.intimp.2012.02.013
63. Orago AS, Facer CA. Cytotoxicity of human natural killer (NK) cell subsets for *Plasmodium falciparum* erythrocytic schizonts: stimulation by cytokines and inhibition by neomycin. *Clin Exp Immunol* (1991) **86**(1):22–9. doi:10.1111/j.1365-2249.1991.tb05768.x
64. Park H-R, Jo S-K, Jung U, Yee S-T. Restoration of the immune functions in aged mice by supplementation with a new herbal composition, HemoHIM. *Phytother Res* (2008) **22**(1):36–42. doi:10.1002/ptr.2255

Conflict of Interest Statement: The present work was conducted in the absence of any commercial or financial relationship that could be construed as a potential conflict of interest.

Copyright © 2016 Romero-Pérez, Egashira, Harada, Tsuruta, Oda, Ueda, Tsukahara, Tsukamoto and Inoue. This is an open-access article distributed under the terms of the Creative Commons Attribution License (CC BY). The use, distribution or reproduction in other forums is permitted, provided the original author(s) or licensor are credited and that the original publication in this journal is cited, in accordance with accepted academic practice. No use, distribution or reproduction is permitted which does not comply with these terms.