



OPEN ACCESS

APPROVED BY
Frontiers Editorial Office,
Frontiers Media SA, Switzerland

*CORRESPONDENCE
G. D. Giebel
✉ godwin.giebel@medman.uni-due.de

RECEIVED 12 April 2024
ACCEPTED 15 April 2024
PUBLISHED 26 April 2024

CITATION
Giebel GD, Abels C, Borchers K, Kampka B,
Neusser S, Cissarek HR, Plescher F, Wasem J
and Blase N (2024) Corrigendum: Integration
of digital health applications into the German
healthcare system: development of “The
DiGA-Care Path”.
Front. Health Serv. 4:1416456.
doi: 10.3389/frhs.2024.1416456

COPYRIGHT
© 2024 Giebel, Abels, Borchers, Kampka,
Neusser, Cissarek, Plescher, Wasem and Blase.
This is an open-access article distributed
under the terms of the [Creative Commons
Attribution License \(CC BY\)](#). The use,
distribution or reproduction in other forums is
permitted, provided the original author(s) and
the copyright owner(s) are credited and that
the original publication in this journal is cited,
in accordance with accepted academic
practice. No use, distribution or reproduction
is permitted which does not comply with
these terms.

Corrigendum: Integration of digital health applications into the German healthcare system: development of “The DiGA-Care Path”

G. D. Giebel^{1*}, C. Abels¹, K. Borchers², B. Kampka², S. Neusser¹,
H. R. Cissarek¹, F. Plescher¹, J. Wasem¹ and N. Blase¹

¹Institute for Healthcare Management and Research, University of Duisburg-Essen, Essen, Germany,
²QM BÖRCHERS CONSULTING+, Herne, Germany

KEYWORDS

digital health application, DHA, Digitale Gesundheitsanwendungen, DiGA, care path,
mHealth, mobile app

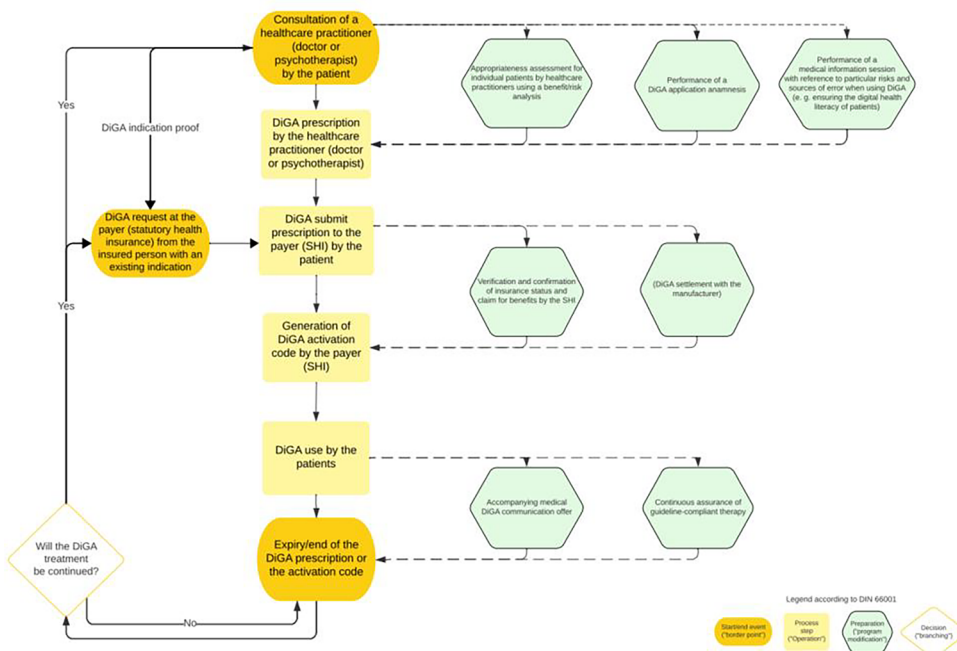
A Corrigendum on

Integration of digital health applications into the German healthcare
system: development of “The DiGA-Care Path”

By Giebel GD, Abels C, Borchers K, Kampka B, Neusser S, Cissarek HR, Plescher F, Wasem J,
Blase N (2024). Front Health Serv. 4:1372522. doi: 10.3389/frhs.2024.1372522

In the published article, there was an error in Supplementary Figure S1. A preliminary, German-language version of the attachment was uploaded by mistake. The correct and final version of Supplementary Figure S1 appears below.

Ideal Typical DiGA-Care Path (2024)



The authors apologize for this error and state that this does not change the scientific conclusions of the article in any way. The original article has been updated.

organizations, or those of the publisher, the editors and the reviewers. Any product that may be evaluated in this article, or claim that may be made by its manufacturer, is not guaranteed or endorsed by the publisher.

Publisher's note

All claims expressed in this article are solely those of the authors and do not necessarily represent those of their affiliated