



OPEN ACCESS

EDITED BY

Huilang Wen,
Nanchang University, China

REVIEWED BY

Yuan Lin,
Memorial Sloan Kettering Cancer Center,
United States
Xiaodong Zou,
The Chinese University of Hong Kong, China

*CORRESPONDENCE

Yingpu Sun,
✉ syp2008@vip.sina.com

RECEIVED 08 April 2024

ACCEPTED 27 May 2024

PUBLISHED 21 June 2024

CITATION

Wang Y, Niu W, Shi H, Bao X, Liu Y, Lu M and Sun Y (2024), A novel variation in *DEPDC5* causing familial focal epilepsy with variable foci. *Front. Genet.* 15:1414259. doi: 10.3389/fgene.2024.1414259

COPYRIGHT

© 2024 Wang, Niu, Shi, Bao, Liu, Lu and Sun. This is an open-access article distributed under the terms of the [Creative Commons Attribution License \(CC BY\)](https://creativecommons.org/licenses/by/4.0/). The use, distribution or reproduction in other forums is permitted, provided the original author(s) and the copyright owner(s) are credited and that the original publication in this journal is cited, in accordance with accepted academic practice. No use, distribution or reproduction is permitted which does not comply with these terms.

A novel variation in *DEPDC5* causing familial focal epilepsy with variable foci

Yanchi Wang^{1,2,3,4}, Wenbin Niu^{1,2,3,4}, Hao Shi^{1,2,3,4},
Xiao Bao^{1,2,3,4}, Yidong Liu^{1,2,3,4}, Manman Lu^{1,2,3,4} and
Yingpu Sun^{1,2,3,4*}

¹Center for Reproductive Medicine, The First Affiliated Hospital of Zhengzhou University, Zhengzhou, China, ²Henan Key Laboratory of Reproduction and Genetics, The First Affiliated Hospital of Zhengzhou University, Zhengzhou, China, ³Henan Provincial Obstetrical and Gynecological Diseases (Reproductive Medicine) Clinical Research Center, The First Affiliated Hospital of Zhengzhou University, Zhengzhou, China, ⁴Henan Engineering Laboratory of Preimplantation Genetic Diagnosis and Screening, The First Affiliated Hospital of Zhengzhou University, Zhengzhou, China

Background: Disheveled, EGL-10, and pleckstrin (DEP) domain-containing protein 5 (*DEPDC5*) is a component of GTPase-activating protein (GAP) activity toward the RAG complex 1 (GATOR1) protein, which is an inhibitor of the amino acid-sensing branch of the mammalian target of rapamycin complex 1 (mTORC1) pathway. GATOR1 complex variations were reported to correlate with familial focal epilepsy with variable foci (FFEVF). With the wide application of whole exome sequencing (WES), more and more variations in *DEPDC5* were uncovered in FFEVF families.

Methods: A family with a proband diagnosed with familial focal epilepsy with variable foci (FFEVF) was involved in this study. Whole exome sequencing (WES) was performed in the proband, and Sanger sequencing was used to confirm the variation carrying status of the family members. Mini-gene splicing assay was performed to validate the effect on the alternative splicing of the variation.

Results: A novel variant, c.1217 + 2T>A, in *DEPDC5* was identified by WES in the proband. This splicing variant that occurred at the 5' end of intron 17 was confirmed by mini-gene splicing assays, which impacted alternative splicing and led to the inclusion of an intron fragment. The analysis of the transcribed mRNA sequence indicates that the translation of the protein is terminated prematurely, which is very likely to result in the loss of function of the protein and lead to the occurrence of FFEVF.

Conclusion: The results suggest that c.1217 + 2T>A variations in *DEPDC5* might be the genetic etiology for FFEVF in this pedigree. This finding expands the genotype spectrum of FFEVF and provides new etiological information for FFEVF.

KEYWORDS

disheveled, EGL-10, and pleckstrin domain-containing protein 5, focal epilepsy, gene variation, mini-gene splicing assay, mTORC1 pathway

Introduction

Focal epilepsy is a neurological condition in which the predominant symptom is recurring seizures that affect one hemisphere of the brain. It is the most commonly seen epilepsy, accounting for approximately 60% of all epilepsy cases (Dibbens et al., 2013; Zhang et al., 2021). It is increasingly recognized that focal epilepsy might have a genetic basis, and a number of mutations have been identified in autosomal dominant focal epilepsies in both ion-channel and non-ion-channel genes (Baulac, 2014; Steinlein, 2014). Among these genes, mutations in Disheveled, EGL-10, and pleckstrin (DEP) domain-containing protein 5 (*DEPDC5*) have been identified in 5% of sporadic epilepsy cases and 13% of familial epilepsy cases (Baulac, 2014; Tsai et al., 2017).

DEPDC5 plays a role in the GTPase-activating protein (GAP) activity toward RAG complex 1 (GATOR1), along with nitrogen permease regulator like-2 (NPRL2) and nitrogen permease regulator like-3 (NPRL3). The GATOR1 complex is a repressor of the mammalian target of rapamycin (mTOR) signaling pathway, which changes the nucleotide loading status (GTP or GDP) of the RAG proteins and deactivates them to release mTOR complex 1 (mTORC1) from the lysosome (Nicastro et al., 2017; Shen et al., 2018). The mTORC1 pathway is involved in regulating various important cellular processes, such as cell growth, protein synthesis, and autophagy, and its deregulation has been linked with diseases including cancer and epilepsy through the mutation of other repressors of the pathway (Meng et al., 2013; Lipton and Sahin, 2014; D’Gama et al., 2017). As an inhibitor of mTORC1, mutations in GATOR1 are predicted to cause epilepsy through mTORC1 hyperactivity, although the mechanism by which mTORC1 hyperactivity causes epilepsy and associated pathology needs further research (Baulac, 2016).

Here, we performed whole-exome sequencing (WES) for a male patient suffering from multiple unprovoked seizures and uncovered a novel variation (c.1217 + 2T>A) in the *DEPDC5* gene. This variation was inherited from his mother, who has a normal phenotype. The variation was verified to impact the alternative splicing of *DEPDC5* and introduce an early stop codon that resulted in the pre-maturation and loss of function of *DEPDC5*, which, as a consequence, might disturb the mTOR signaling pathway and lead to epilepsy. Our study expands the phenotype and genotype spectrum of *DEPDC5* and further emphasizes the important role of *DEPDC5* in focal epilepsy.

Materials and methods

Patients

A family with a proband diagnosed with familial focal epilepsy with variable foci (FFEVF) was involved in this study. The family members taking part in this study were thoroughly informed about this study, and written informed consent was signed at their first consultation. This study was approved by the Ethics Committee of The First Affiliated Hospital of Zhengzhou University (Ethic no. 2019-KY-166).

WES, variant interpretation, and Sanger sequencing

Genomic DNA (gDNA) was extracted from peripheral blood using the QIAamp DNA Blood Mini Kit (QIAGEN), following the manufacturer’s instructions. The gDNA was fragmented, and the sequencing library was prepared. Subsequently, target gene exons and DNA near the sheared region were captured and enriched using the BGI V4 chip, followed by mutation detection using the MGISEQ-2000 sequencing platform.

Mutations were annotated and screened based on patient’s clinical information, population databases, disease databases, and bioinformatic prediction tools. The classification of variation pathogenicity is based on the sequence variation interpretation guidelines of the American Society for Medical Genetics and Genomics (ACMG). “Ada” and “RF” scores were used to evaluate potential splicing variants predicted by dbSNV (Jian et al., 2014). Variants identified through WES were confirmed by Sanger sequencing.

Mini-gene construction

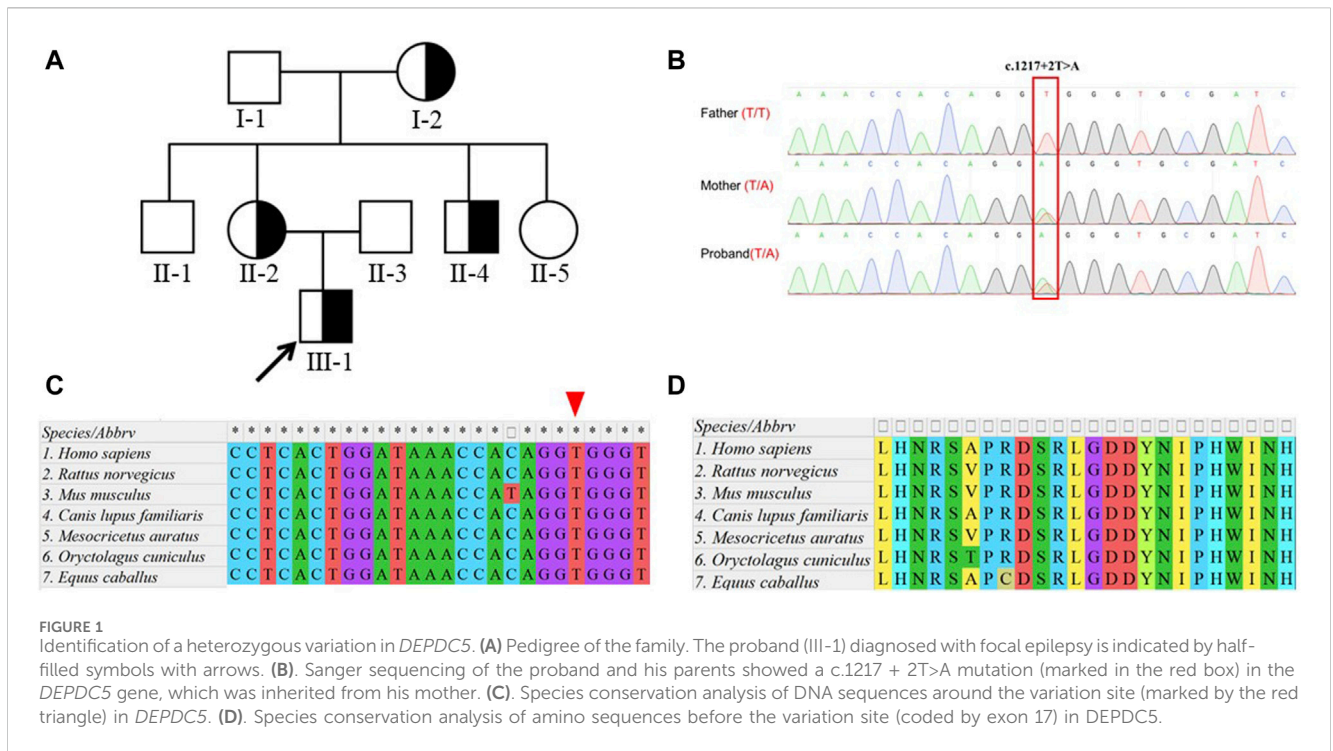
In order to construct the mini gene, we amplified the fragment of *DEPDC5* from exon 16 to the end of exon 18 by PCR and added the endonuclease recognition sequences of HindIII and NotI to the front and end of the fragment, respectively. The PCR products were purified using alcohol and digested along with vector pCDNA3.1 (+) using endonucleases NotI and HindIII (NEB). The digested PCR products and vector were purified via electrophoresis and ligated together with T4 ligase (NEB). Ligase products were transformed into DH5α competent cells, and transformed competent cells were plated on the LB plate coated with ampicillin. Then, single clones were picked up for proliferation and Sanger sequencing. Identified colonies were amplified, and plasmid DNA without endotoxin was extracted using the FastPure EndoFree Plasmid Maxi Kit (Vazyme). Primers used in this study are listed in [Supplementary Material S1](#).

Cell transfection

Human embryonic kidney 293T (HEK293T) cells were cultured in DMEM/high glucose (Gibco) using 10% FBS (Sigma) in a 37°C constant temperature water bath incubator at 5% CO₂. The cells were dissociated into single cells using trypsin-EDTA (Thermo Fisher) after growth to an 80% confluence degree. Cells were counted, and 4 × 10⁵ cells were seeded in 6-well plates 24 h before transfection. The cell medium was changed using Opti-MEM (Thermo Fisher) 2 h before transfection. Lipofectamine 2000 (Thermo Fisher) was incubated for 20 min at room temperature and mixed thoroughly with 1 μg plasmid, and then the mixture was gently added to the cell medium. The cell medium was replaced by a fresh culture medium using 10% FBS 12 h after transfection.

RT-PCR and Sanger sequencing

Total RNA was extracted 48 h after transfection using TRIzol reagent (Thermo Fisher) following the routine procedure. Retro-



transcription was performed using HiScript III 1st strand cDNA Synthesis Kit with gDNA wiper (Vazyme) according to the manufacturer’s manual. cDNA was used as a template for PCR with primers pairs F3/R3 specifically binding to *DEPDC5* exons 16 and 18 (Supplementary Material S1). PCR products were analyzed via agarose gel electrophoresis and Sanger sequencing.

Bio-informative analyses and 3D protein structure modeling

The *DEPDC5* gene sequences of different species were obtained from the NCBI Gene database (<https://www.ncbi.nlm.nih.gov/gene/>) and aligned by Molecular Evolutionary Genetics Analysis Version 11 (MEGA11) (Tamura et al., 2021).

The molecular structure of the cryo-EM structure of GATOR1 viewed by Mol* Viewer (Sehnal et al., 2021) was created by Shen et al. (2018) and stored at RCSB PDB (Berman et al., 2000). The structure of the mutated *DEPDC5* protein was predicted and modeled using the SWISS-MODEL (Waterhouse et al., 2018) program.

Results

Case presentation

The proband was a 7-year-old boy born following an uneventful full-term pregnancy. He presented with unprovoked seizures and dyskinesia and exhibited motor developmental delays such as the inability to walk or raise his head, along with high muscle tone and inconsistent limb activities on both sides. According to the mother’s account, the labor process went smoothly; however, antiepileptic drugs

did not effectively control the symptoms during early childhood, resulting in a prolonged disease course. Screening for infection as well as blood and urine metabolic screening showed no abnormalities. The head MRI of the proband showed no obvious signal abnormalities. Both parents of the proband had normal phenotypes; one of the proband’s maternal uncles also had epilepsy, while one sister had normal phenotypes. Additionally, both maternal grandparents had normal phenotypes (Figure 1A).

Identification of *DEPDC5* variation related to familial focal epilepsy with variable foci

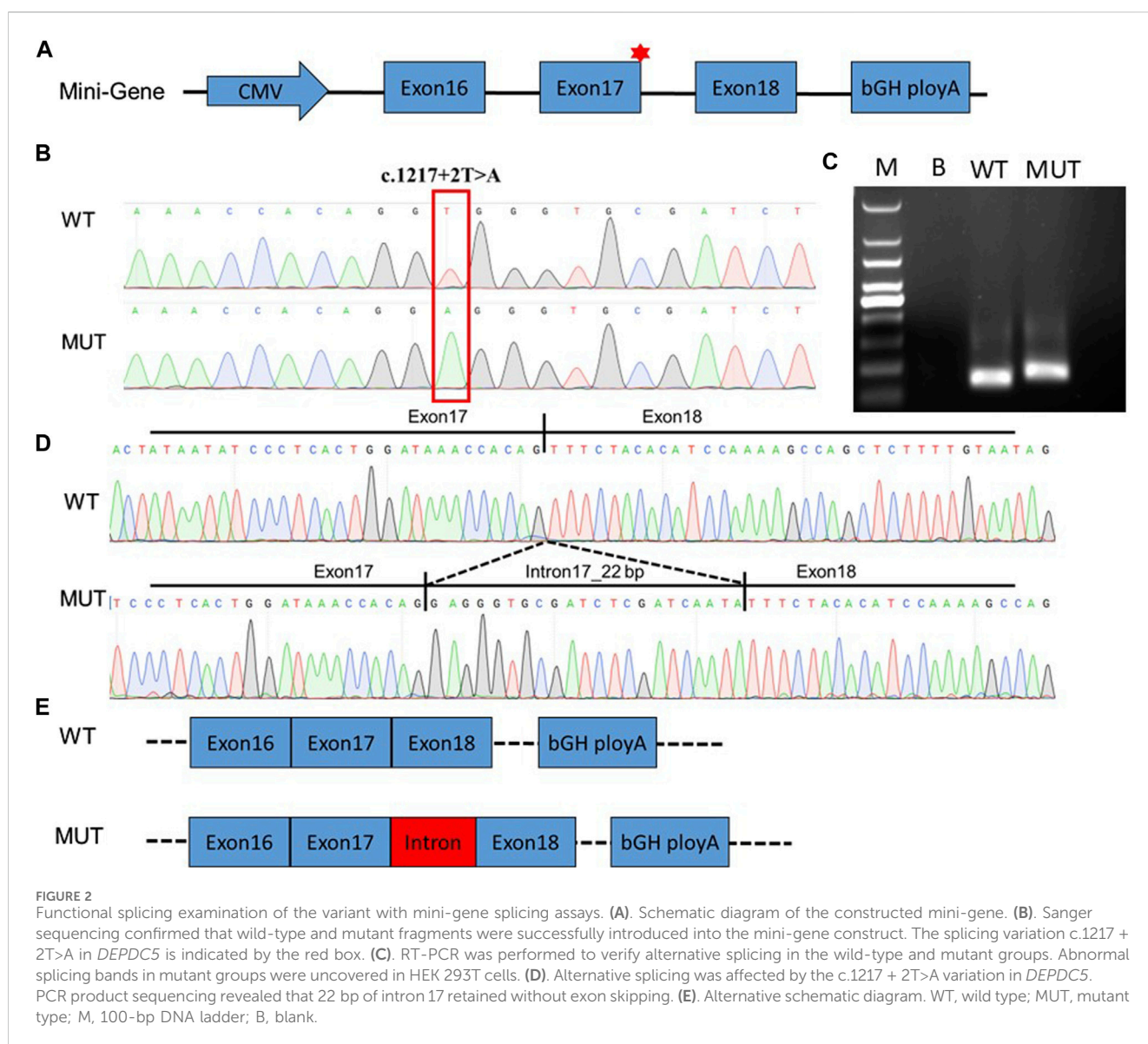
To further elucidate the diagnosis and explore the etiology of the case, WES was performed, which identified a heterozygous variant (NM_001242897.1, exon 17, c.1217 + 2T>A) in the *DEPDC5* gene. The variant affected a canonical splicing site at the 5’ end of intron 17, potentially disrupting alternative splicing and leading to the loss-of-function effect on the protein. Sanger sequencing confirmed that this variant was inherited from his healthy mother, who did not exhibit any seizure-related symptoms (Figure 1B). The proband’s younger uncle (with epilepsy) and grandmother (without symptoms) also carried this variant (Supplementary Figure S1).

Notably, this variant was absent in the databases ESP6500 (the Genome Aggregation Database, V2), 1KGP (1000 Genomes Project, Phase3), ExAC (the Exome Aggregation Consortium, r0.3.1), and gnomAD (the Genome Aggregation Database, r2.0.1), indicating its rarity within these populations. The variant was also predicted to be splicing-influencing by “Ada” and “RF” scores (Table 1). Sequence alignments of different species showed that both the DNA loci and the amino acid residues upstream and downstream were evolutionarily conserved (Figures 1C, D). According to the

TABLE 1 Clinical examination and variant information.

Gene	Mutation	Inheritance	MAF				dbscSNV_Ada_Score	dbscSNV_RF_Score	Category
			ESP6500	ExAC	1,000 genomes	gnomAD			
<i>DEPDC5</i>	c.1217 + 2T>A	Inherited	NE	NE	NE	NE	0.9999	0.93	LP

Transcript, NM_001242897.1; MAF, minor allele frequency; NE, not exist; LP, likely pathogenic.

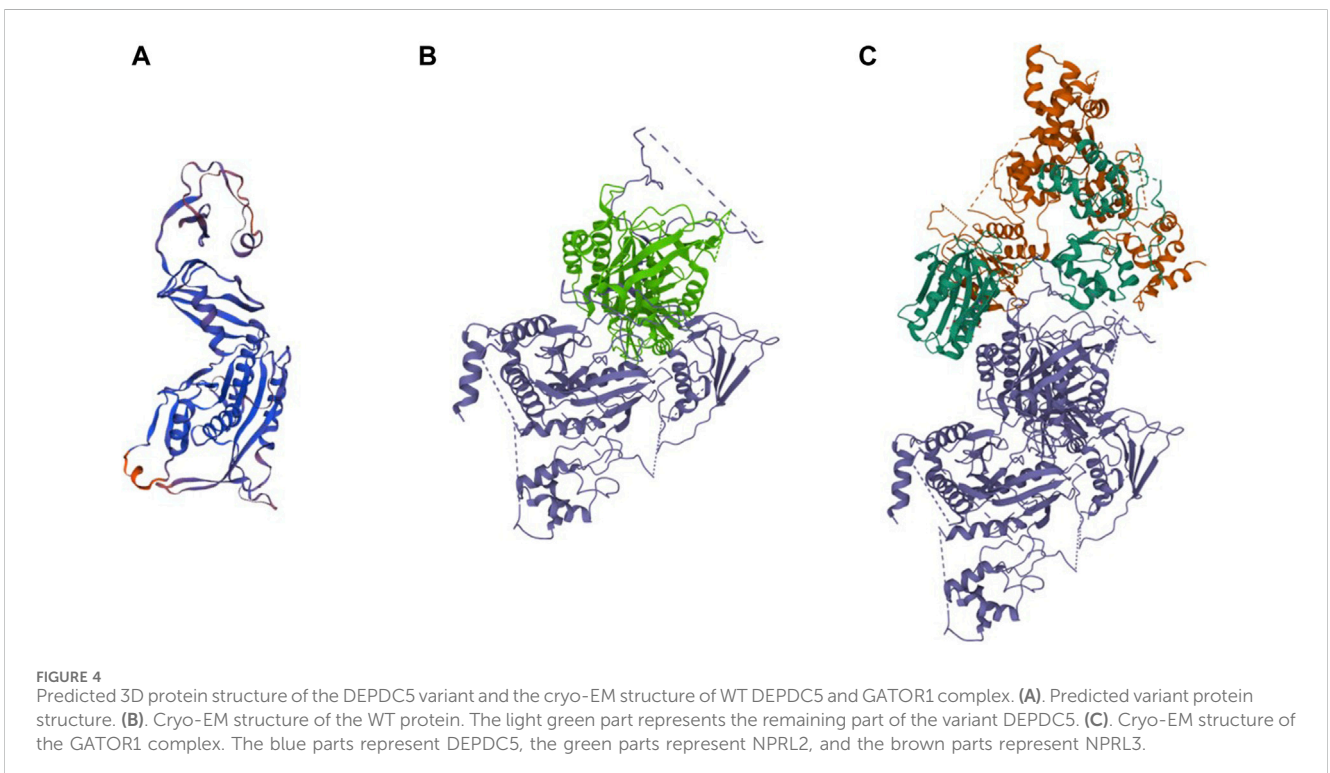
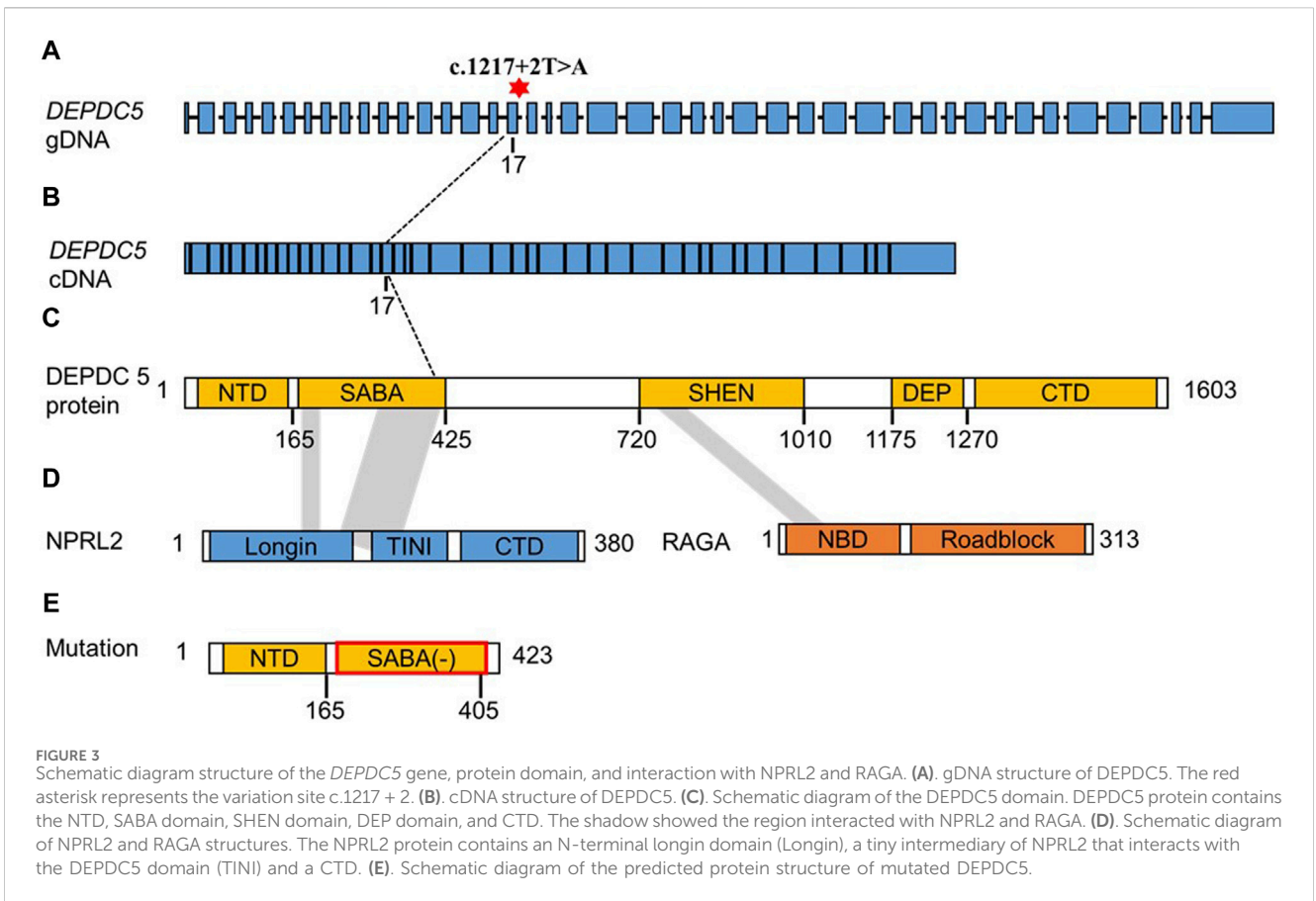


ACMG guidelines, the novel variation c.1217 + 2T>A in our study was designated as likely pathogenic.

Functional splicing examination of the variant with mini-gene splicing assays

To validate the effect of the c.1217 + 2T>A variation on RNA alternative splicing, we conducted a mini-gene splicing assay by

constructing expression vectors containing the wild-type (WT) and mutation-type (MUT) target DNA fragments (Figure 2A). The vectors were confirmed by Sanger sequencing (Figure 2B), and plasmid DNA without endotoxin was transfected into HEK 293T cells. The total RNA of transfected cells was extracted, and reverse transcription was performed to achieve the cDNA. Agarose electrophoresis of RT-PCR products revealed two distinct splicing patterns (Figure 2C), and Sanger sequencing uncovered abnormal splicing that occurred in cells transfected with the mutation plasmid.



Sequencing analysis showed that a 22-bp intron 17 fragment was retained in the mutation group (Figures 2D, E).

Translation analysis and protein modeling

We further analyzed the cDNA sequence of *DEPDC5* with variation and found that the retention of the 22-bp fragment led to frameshift variation and the early appearance of the stop codon, which resulted in the pre-maturation of *DEPDC5* with 423 amino acid residues. Thus, the variation could be described as c.1217 + 2T>A (p.S406Rfs*18). Mutated *DEPDC5* lost the whole enhancement of nucleotidase activity (SHEN) domain, Disheveled, EGL-10, and pleckstrin (DEP) domain, and C-terminal domain (CTD), and the end of the structural axis for binding arrangement (SABA) domain also changed, as shown by the SABA (-) labeled in the red frame in Figure 3. According to the previous study, the SHEN domain contacts the nucleotide-binding domain of RAGA, and the CTD is located in the core of *DEPDC5* and contacts all the other domains of *DEPDC5* except the N-terminal domain (NTD) (Figure 3), making it the central organizer of this multi-domain protein (Shen et al., 2018). Loss of these domains means a radical change in the protein, and its function would be severely compromised. We could intuitively observe the significant alteration of *DEPDC5* brought by the gene variation through the 3D model comparison of the mutated protein with the wild type (Figure 4).

Discussion

In this article, we described a patient with a clinical presentation compatible with the *DEPDC5* phenotype, and we discovered a germline splicing variant c.1217 + 2T>A in the *DEPDC5* gene. As far as we know, this splicing variant has not been recorded or reported before. Approximately 9% of all mutations reported in the Human Gene Mutation Database (HGMD) are splicing mutations (18761/208368), and this number may be underestimated (Anna and Monika, 2018). Accurate pre-mRNA splicing is critical for proper protein translation, and it depends on the existence of consistent cis sequences that define exon–intron boundaries and regulatory sequences recognized by splicing mechanisms. Point mutations in these consistent sequences may result in the improper recognition of exons and introns and may lead to the formation of abnormal transcripts of mutant genes. However, the exact effect of specific splicing mutations on alternative pre-mRNA splicing needs further validation. The alternative splicing that does not result in the frameshift might have a mild effect on protein function. Mutations in the canonical splice sequences usually lead to single-exon skipping; however, in our study, unlike the skipping of exon 17 as expected, a segment of intron 17 was included in mRNA due to the variation. One possible reason for this may be that the splicing site is weak, while the presence of mutations uncovers the cryptic splice site in the neighboring intron, and this alternative site is used in the splicing process (Anna and Monika, 2018). The retention of the intron sequence resulted in a frameshift and the early appearance of a stop codon, causing the *DEPDC5* protein to be pre-matured and lose its normal function.

DEPDC5 (OMIM 614191) is located on chromosome 22q12.3 and is 154 kb in length. The *DEPDC5* protein contains 1,603 amino acids and can be divided into five domains, which were

named—in order from the N terminus to the C terminus—the NTD, (SABA) domain, steric hindrance for the SHEN domain, DEP domain, and CTD (Figure 3C). (Shen et al., 2018) *DEPDC5* interacts with the NPRL2–NPRL3 heterodimer through the SABA domain and forms the GATOR1 complex, while the GATOR1 complex interacts with RAGA through the SHEN domain of *DEPDC5*. The variation in this study led to an alternative splice and might produce a truncated protein with 423 amino acids. Even if the truncated protein could be stable *in vivo*, the protein lost the SHEN and CTD domains; so, the GATOR1 complex formed with the truncated protein might lose its GAP activity. Thus, this splicing variant was highly likely to result in haploinsufficiency.

Haploinsufficiency is the likely mechanism underlying the pathogenesis of *DEPDC5* mutations, and epilepsy related to *DEPDC5* variants is inherited in an autosomal dominant manner. Nevertheless, asymptomatic carriers are commonly seen in *DEPDC5*-related families, and the incomplete penetrance differs among different pedigrees (Baldassari et al., 2019; Liu et al., 2020). Incomplete penetrance is probably due to the combination of genetic, environmental, and lifestyle factors (Coll et al., 2018). Furthermore, this might also result in the additive effect of multiple independent variations, which can interfere with and often increase the severity of the phenotype. Ingrid et al. first proposed the second-hit hypothesis in *DEPDC5* mutation-related epilepsy (Scheffer et al., 2014). According to the hypothesis, in addition to the germline mutations, there is also a somatic mutation on the other allele or on another gene involved in the mTOR pathway in local brain tissue (Ribierre et al., 2018; Lee et al., 2019). Though there are already a few cases supporting this hypothesis, further exploration is still needed.

Nevertheless, there are also some limitations to this study. For instance, some clinical materials were already not suitable for special tests, like RNA analysis or Western blotting, when we started the study, as this was a retrospective study. So, the results of the mini-gene splicing assay were not further validated in patients' samples.

In conclusion, in this article, we describe a pedigree with FFEVF harboring a novel splicing variation, c. 1217+2T>A (p.S406Rfs*18), in the *DEPDC5* gene. The effect of this variation on alternative splicing and translation was confirmed by mini-gene splice assays and the following analysis. Our study provided a new source of evidence for the pathogenicity of splicing variation in the GATOR1 complex and expanded the phenotype and genotype spectrum of FFEVF, enhancing the critical role of *DEPDC5* in neurodevelopment.

Data availability statement

The datasets presented in this study can be found in online repositories (https://figshare.com/articles/dataset/DataSheet1_xlsx/26021818). The names of the repository/repositories and accession number(s) can be found in the article/Supplementary Material.

Ethics statement

The studies involving humans were approved by the Ethics Committee of, The First Affiliated Hospital of Zhengzhou University. The studies were conducted in accordance with the local legislation and institutional requirements. Written informed

consent for participation in this study was provided by the participants' legal guardians/next of kin.

Author contributions

YW: conceptualization, funding acquisition, writing—original draft, writing—review and editing, methodology, validation, data curation, and software. WN: writing—review and editing, validation, resources, and supervision. HS: data curation, writing—review and editing, validation, and resources. XB: writing—review and editing, validation, and resources. YL: writing—review and editing, methodology, and software. ML: writing—review and editing, methodology, and software. YS: conceptualization, funding acquisition, supervision, and writing—review and editing.

Funding

The author(s) declare that financial support was received for the research, authorship, and/or publication of this article. This work was funded by the National Key R&D Program of China (2019YFA0110900 to YS), Joint Co-construction Project of Henan Medical Science and Technology Research Plan (LHGJ20200321 to YW), and Postdoctoral Foundation of Henan Province (to YW).

References

- Anna, A., and Monika, G. (2018). Splicing mutations in human genetic disorders: examples, detection, and confirmation. *J. Appl. Genet.* 59 (3), 253–268. doi:10.1007/s13533-018-0444-7
- Baldassari, S., Picard, F., Verbeek, N. E., van Kempen, M., Brilstra, E. H., Lesca, G., et al. (2019). The landscape of epilepsy-related GATOR1 variants. *Genet. Med.* 21 (2), 398–408. doi:10.1038/s41436-018-0060-2
- Baulac, S. (2014). Genetics advances in autosomal dominant focal epilepsies: focus on DEPDC5. *Prog. Brain Res.* 213 (C), 123–139. doi:10.1016/B978-0-444-63326-2.00007-7
- Baulac, S. (2016). mTOR signaling pathway genes in focal epilepsies. *Prog. Brain Res.* 226, 61–79. doi:10.1016/B.S.PBR.2016.04.013
- Berman, H. M., Westbrook, J., Feng, Z., Gilliland, G., Bhat, T. N., Weissig, H., et al. (2000). The protein data bank. *Nucleic Acids Res.* 28 (1), 235–242. doi:10.1093/NAR/28.1.235
- Coll, M., Pérez-Serra, A., Mates, J., Del Olmo, B., Puigmulé, M., Fernandez-Falgueras, A., et al. (2018). Incomplete penetrance and variable expressivity: hallmarks in channelopathies associated with sudden cardiac death. *Biol. (Basel)*. 7 (1), 3. doi:10.3390/biology7010003
- D'Gama, A. M., Woodworth, M. B., Hossain, A. A., Bizzotto, S., Hatem, N. E., LaCoursiere, C. M., et al. (2017). Somatic mutations activating the mTOR pathway in dorsal telencephalic progenitors cause a continuum of cortical dysplasias. *Cell Rep.* 21, 3754–3766. doi:10.1016/j.celrep.2017.11.106
- Dibbens, L. M., De Vries, B., Donatello, S., Heron, S. E., Hodgson, B. L., Chintawar, S., et al. (2013). Mutations in DEPDC5 cause familial focal epilepsy with variable foci. *Nat. Genet.* 45 (5), 546–551. doi:10.1038/ng.2599
- Jian, X., Boerwinkle, E., and Liu, X. (2014). *In silico* prediction of splice-altering single nucleotide variants in the human genome. *Nucleic Acids Res.* 42 (22), 13534–13544. doi:10.1093/nar/gku1206
- Lee, W. S., Stephenson, S. E. M., Howell, K. B., Pope, K., Gillies, G., Wray, A., et al. (2019). Second-hit DEPDC5 mutation is limited to dysmorphic neurons in cortical dysplasia type IIA. *Ann. Clin. Transl. Neurol.* 6 (7), 1338–1344. doi:10.1002/acn3.50815
- Lipton, J. O., and Sahin, M. (2014). The Neurology of mTOR. *Neuron* 84 (2), 275–291. doi:10.1016/j.neuron.2014.09.034
- Liu, L., Chen, Z. R., Xu, H. Q., Liu, D. T., Mao, Y., Liu, H. K., et al. (2020). DEPDC5 variants associated malformations of cortical development and focal epilepsy

Acknowledgments

The authors would like to express their sincere gratitude to the patients involved in this study.

Conflict of interest

The authors declare that the research was conducted in the absence of any commercial or financial relationships that could be construed as a potential conflict of interest.

Publisher's note

All claims expressed in this article are solely those of the authors and do not necessarily represent those of their affiliated organizations, or those of the publisher, the editors, and the reviewers. Any product that may be evaluated in this article, or claim that may be made by its manufacturer, is not guaranteed or endorsed by the publisher.

Supplementary material

The Supplementary Material for this article can be found online at: <https://www.frontiersin.org/articles/10.3389/fgene.2024.1414259/full#supplementary-material>

with febrile seizure plus/febrile seizures: the role of molecular sub-regional effect. *Front. Neurosci.* 14 (August), 821. doi:10.3389/fnins.2020.00821

Meng, X.-F., Yu, J.-T., Song, J.-H., Chi, S., and Tan, L. (2013). Role of the mTOR signaling pathway in epilepsy. *J. Neurol. Sci.* 332 (1), 4–15. doi:10.1016/j.jns.2013.05.029

Nicastro, R., Sardu, A., Panchaud, N., and De Virgilio, C. (2017). The architecture of the Rag GTPase signaling network. *Biomolecules* 7, 48–69. doi:10.3390/biom7030048

Ribierre, T., Deleuze, C., Bacq, A., Baldassari, S., Marsan, E., Chipaux, M., et al. (2018). Second-hit mosaic mutation in mTORC1 repressor DEPDC5 causes focal cortical dysplasia-associated epilepsy. *J. Clin. Invest.* 128 (6), 2452–2458. doi:10.1172/JCI99384

Scheffer, I. E., Heron, S. E., Regan, B. M., Mandelstam, S., Crompton, D. E., Hodgson, B. L., et al. (2014). Mutations in mammalian target of rapamycin regulator DEPDC5 cause focal epilepsy with brain malformations. *Ann. Neurol.* 75 (5), 782–787. doi:10.1002/ana.24126

Sehna, D., Bittrich, S., Deshpande, M., Svobodová, R., Berka, K., Bazgier, V., et al. (2021). Mol* Viewer: modern web app for 3D visualization and analysis of large biomolecular structures. *Nucleic Acids Res.* 49 (W1), W431–W437. doi:10.1093/NAR/GKAB314

Shen, K., Huang, R. K., Brignole, E. J., Condon, K. J., Valenstein, M. L., Chantranupong, L., et al. (2018). Architecture of the human GATOR1 and GATOR1-Rag GTPases complexes. *Nature* 556 (7699), 64–69. doi:10.1038/nature26158

Steinlein, O. K. (2014) *Genetic heterogeneity in familial nocturnal frontal lobe epilepsy*. 1st ed. Elsevier B.V. doi:10.1016/B978-0-444-63326-2.00001-6

Tamura, K., Stecher, G., and Kumar, S. (2021). MEGA11: molecular evolutionary genetics analysis version 11. *Mol. Biol. Evol.* 38 (7), 3022–3027. doi:10.1093/molbev/msab120

Tsai, M. H., Chan, C. K., Chang, Y. C., Yu, Y. T., Chuang, S. T., Fan, W. L., et al. (2017). DEPDC5 mutations in familial and sporadic focal epilepsy. *Clin. Genet.* 92 (4), 397–404. doi:10.1111/cge.12992

Waterhouse, A., Bertoni, M., Bienert, S., Studer, G., Tauriello, G., Gumienny, R., et al. (2018). SWISS-MODEL: homology modelling of protein structures and complexes. *Nucleic Acids Res.* 46 (W1), W296–W303. doi:10.1093/NAR/GKY427

Zhang, X., Huang, Z., Li, M., Liu, J., Zhao, X., Ye, J., et al. (2021). Phenotypic and genotypic characterization of DEPDC5-related familial focal epilepsy: case series and literature review. *Front. Neurol.* 12 (June), 641019. doi:10.3389/fneur.2021.641019