



Landscape Analysis of Matrix Metalloproteinases Unveils Key Prognostic Markers for Patients With Breast Cancer

Tianyi Cheng¹, Peiyong Chen¹, Jingyi Chen¹, Yingtong Deng¹ and Chen Huang^{1,2*}

¹Faculty of Chinese Medicine, State Key Laboratory of Quality Research in Chinese Medicines, Macau University of Science and Technology, Macau, China, ²Dr. Neher's Biophysics Laboratory for Innovative Drug Discovery, Macau University of Science and Technology, Macau, China

OPEN ACCESS

Edited by:

Jie Sun,
Wenzhou Medical University, China

Reviewed by:

Xin Chen,
Guangdong University of Technology,
China
Wei Li,
Fudan University, China

*Correspondence:

Chen Huang
chuang@must.edu.mo

Specialty section:

This article was submitted to
Computational Genomics,
a section of the journal
Frontiers in Genetics

Received: 05 November 2021

Accepted: 16 December 2021

Published: 06 January 2022

Citation:

Cheng T, Chen P, Chen J, Deng Y and
Huang C (2022) Landscape Analysis of
Matrix Metalloproteinases Unveils Key
Prognostic Markers for Patients With
Breast Cancer.
Front. Genet. 12:809600.
doi: 10.3389/fgene.2021.809600

Breast cancer (BRCA) is the most common cancer in the world, of which incidence rate and mortality are the highest in women. Being responsible for the remodeling and degradation of extracellular matrix proteins, matrix metalloproteinases (MMPs) have been regarded as one of the most important protease family related to tumorigenesis. It has been demonstrated that MMPs play crucial roles in some tumor invasion and metastasis. However, the potential roles of MMPs in tumorigenesis and progression of BRCA and its subtype remain elusive. Herein, we conducted a systematic study on MMPs via a series of database-based retrospective analysis, including TCGA, R Studio, GEPIA, Kaplan-Meier Plotter, cBioPortal, STRING, GeneMANIA and TIMER. As a result, many MMP family members were differentially expressed in patients with BRCA, e.g., the expressions of MMP1, MMP9, MMP11 and MMP13 were up-regulated, whereas the expression levels of MMP19 and MMP28 were down-regulated. MMP9, MMP12, MMP15 and MMP27 were significantly correlated with the clinical stages of BRCA, implying their important roles in the occurrence and development of BRCA. In addition, the survival analysis indicated that different expression pattern of MMPs exhibited distinct outcomes in patient with BRCA, e.g., patients with high expression of MMP2, MMP8, MMP16, MMP17, MMP19, MMP20, MMP21, MMP24, MMP25, MMP26 and MMP27 had a prolonged survival time, while the others (MMP1, MMP7, MMP9, MMP12 and MMP15) exhibited poor prognosis. Subsequent functional and network analysis revealed MMPs were mainly correlated with parathyroid hormone synthesis and secretion pathway, collagen metabolism, and their effect on the activities of serine hydrolase, serine peptidase and aminopeptidase. Notably, our analysis showed that the expression of MMPs was significantly correlated with the infiltration of various immune cells in BRCA, including CD8+T cells, CD4+T cells, macrophages, neutrophils, B cells, and dendritic cells, suggesting the close correlations between MMPs and immune functions. In short, our study disclosed MMPs play multiple biological roles in the development of BRCA, MMP1

Abbreviations: BRCA, Breast cancer; ECM, Extracellular matrix; Her2, Human epidermal growth factor receptor 2-positive/estrogen receptor-negative (HER2+/ER-); MMPs, Matrix metalloproteinases; OS, Overall survival; PPI, Protein-protein interactions; RFS, Recurrence-free survival; TME, Tumor microenvironment.

and MMP9 might be used as independent prognostic markers and potential therapeutic targets for diagnosis and treatment for patients with BRCA.

Keywords: breast cancer, matrix metalloproteinases, immune infiltration, bioinformatics, prognostic value

1 INTRODUCTION

1.1 Background

In 2020, breast cancer (BRCA) has become the most common cancer worldwide, replacing lung cancer (Sung et al., 2021). Five major intrinsic subtypes of breast tumors were identified, including Basal-like, Luminal A, Luminal B, Human epidermal growth factor receptor 2-positive/estrogen receptor-negative (HER2+/ER-) and Normal Breast-like (Zhang et al., 2018). Although BRCA diagnostic examinations such as mammography, computed tomography, magnetic resonance imaging, biopsy, ultrasound, and molecular imaging had made a significant progression, mortality is still progressively increasing because BRCA is undetected in initial stages and breast tumor can metastasize (Perez-Rivas et al., 2012). Early BRCA has no obvious characteristics, which is often ignored by patients and makes them blunder away the most appropriate treatment time (Ren et al., 2020). The limitation relates to the evidence that available tumor markers show low levels of sensitivity (Lawicki et al., 2016), which makes the necessity of potential constructive diagnostic methods of detection. Additionally, previous studies have shown that the major reason for the death of BRCA patients is the invasion and metastasis of breast tumors (Curigliano et al., 2017). Therefore, mechanisms and drugs that effectively inhibit tumor cell migration and invasion have become hotspots (Luo and Zhou 2020).

Matrix metalloproteinases (MMPs) are a family of zinc-dependent endoproteases responsible for the tissue remodeling and degradation of extracellular matrix (ECM) proteins (Nagase et al., 2006). MMPs are the most important protease family related to tumorigenesis (Kessenbrock et al., 2010), and play an important role in tumor invasion and metastasis (Endres et al., 2016). There are at least 23 matrix metalloproteinases expressed in human body, and they can usually be divided into the following five types (Cerofolini et al., 2019): 1) Non-furin regulated MMPs, including MMP1, MMP3, MMP7, MMP8, MMP10, MMP12, MMP13, MMP20 and MMP27; 2) MMPs containing three fibronectin-like inserts in the catalytic domain, including MMP2 and MMP9; 3) MMPs anchored to the cell membrane via the C-terminal glycosylphosphatidylinositol moiety, including MMP11, MMP17 and MMP25; 4) MMPs with transmembrane domains, including MMP14, MMP15, MMP16 and MMP24; 5) Other types of MMPs, including MMP19, MMP21, MMP23, MMP26 and MMP28.

In previous studies, some genes of the MMP family have been confirmed to be related to breast cancer. For example, MMP2 and MMP9 were possible tumor markers for breast cancer patients (Stankovic et al., 2010; Radenkovic et al., 2014). MMP7 was a decisive factor in Chinese women with breast cancer (Beeghly-Fadiel et al., 2009). The level of MMP7 in patients with bone metastasis was much higher than that in patients without bone metastasis (Voorzanger-Rousselot et al., 2006). The expression level

of MMP11 in BRCA was higher than that in normal tissues, reflecting the differentiation stage of BRCA, and could be used as one of the prognostic markers of breast cancer (Cheng et al., 2010). Some scholars also investigated that MMP14 was the most significant factor related to the prognosis of breast cancer (Têtu et al., 2006). However, the functions and prognostic effects of other different types of MMP family members in breast cancer tissues are still unknown. Therefore, this study aims at unveiling clinical values of MMPs in BRCA and its subtypes via analyzing the expression differences, prognostic effects, gene mutations, as well as their potential association with immune cell infiltration level based on the application of series of public biological data platforms.

2 METHODS

2.1 The Gene Expression Profiling Interactive Analysis Database Used to Extract the Expression of the Matrix Metallo Proteinases Family

The GEPIA database (Gene Expression Profiling Interactive Analysis, <http://gepia.cancer-pku.cn/>) contains RNA sequencing data of common malignant tumor samples and normal samples in the TCGA and GEO databases (Tang et al., 2017). In this study, the GEPIA database was used to extract the expression and pathological stage analysis of each gene of the MMP family in breast cancer. For the expression analysis, we selected the “expression analysis” mode and “BRCA” as cancer types. Each MMP was input. Other options were set to the default values. For the pathological stage analysis, we input each MMP gene, added “BRCA” as cancer types, and used major stage for plotting.

2.2 Kaplan-Meier Plotter Database Used to Analyze the Relationship Between Matrix Metallo Proteinases and Breast Cancer Survival and Prognosis

This study used the Kaplan-Meier Plotter data analysis platform (Nagy et al., 2018) (<https://kmplot.com/analysis/>) to search for each gene in the MMP family, for survival analysis of breast cancer patients. In this analysis, the pathological type, clinical staging, and grading conditions of breast cancer were not restricted.

2.3 cBioPortal Used to Analyze the Expression of Matrix Metallo Proteinases in Breast Cancer

cBioPortal (cBio Cancer Genomics Portal, <http://cbioportal.org/>) provides a multi-dimensional visualization tool for research and analysis of cancer-related genetic data (Gao et al., 2013). Based on

283 large-scale tumor-related gene expression and proteomics studies in databases such as TCGA, gene mutation analysis of MMPs in the cBioPortal database was conducted, along with the survival rate analysis of the mutant group and the non-mutant group.

2.4 GeneMANIA Database Used for Function Analysis of Matrix Metalloproteinases

The GeneMANIA database (Warde-Farley et al., 2010) (<http://genemania.org/>) generates hypotheses about gene functions and analyzes gene lists, and determines the priority of genes according to their functions. The list of MMP family genes was imported. Functional analysis of differentially expressed MMP family genes and related molecules was performed.

2.5 STRING Database Used to Analyze Protein-Protein Interactions of Matrix Metalloproteinases

The STRING database (Szklarczyk et al., 2019) (<https://www.string-db.org/>) is a platform for analyzing protein interactions. The database was used to analyze the interaction between known proteins and predicted proteins, including direct interactions and indirect interactions. This study analyzed the interaction of MMP family proteins through STRING database. The protein-protein interactions (PPI) network was constructed from the STRING database (<https://string-db.org/>), which included data compiled from several sources. “MMP1, MMP2, MMP3, MMP7, MMP8, MMP9, MMP10, MMP11, MMP12, MMP13, MMP14, MMP15, MMP16, MMP17, MMP19, MMP20, MMP21, MMP24, MMP25, MMP26, MMP27 and MMP28” were input to the “multiple proteins” box with “*Homo sapiens*” selected as the organism. Other options were left as default options.

2.6 TIMER Database Used for Analysis of the Immune Infiltration Status of Matrix Metalloproteinases

The TIMER2.0 (Li et al., 2017) (<http://timer.comp-genomics.org/>) database was used to systematically evaluate the infiltration of different immune cells and their clinical effects. This study analyzed the correlation between MMP expression in BRCA and the infiltration of six immune cells (CD4⁺T cells, CD8⁺T cells, B cells, macrophages, neutrophils, and dendritic cells in breast cancer) through the TIMER2.0 database.

2.7 The Cancer Genome Atlas and R Studio Used for Analysis of the Breast Cancer Subtype

The Cancer Genome Atlas (TCGA) (<https://portal.gdc.cancer.gov/>) is a genomics database and used for analyzing cancer samples (Tomczak et al., 2015). To comprehensively investigate corresponding analysis of MMPs and BRCA subtypes, we used R package Kruskal wallis and ggplot2 to analyze the differential expression of MMPs in five major subtypes of BRCA. We also used R package cgdscr, survival and survminer to analyze the survival

and prognosis for each subtype. Moreover, we investigated the estimate score of MMP1 and MMP9 in five subtypes of BRCA via R Package Estimate.

2.8 Statistical Methods

The Kaplan-Meier model was used to analyze the relationship between breast cancer survival prognosis and the expression of MMP family, and the log-rank test was used to estimate the difference in survival rate. The MMP family genes were significantly correlated with immune cell infiltration ($p < 0.05$) through the GENE module in the TIMER2.0 database.

3 RESULTS

3.1 Differential Expression of Matrix Metalloproteinases in Breast Cancer and its Subtype Patients

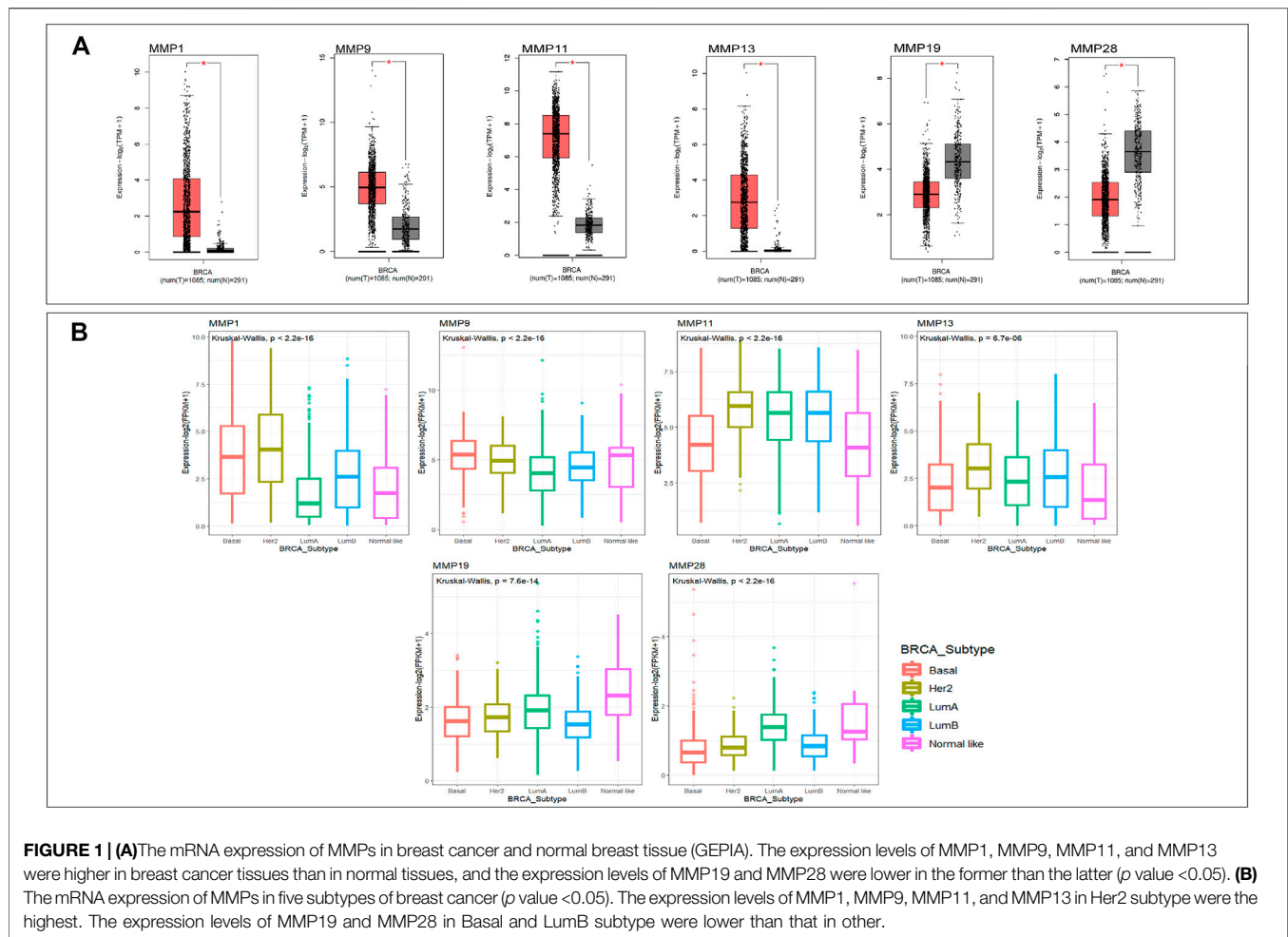
Through the GEPIA database, we compared the mRNA expression of MMPs in tumor with normal breast tissues, including 1085 BRCA samples and 291 normal tissue samples. The results showed that the expression levels of MMP1, MMP9, MMP11, and MMP13 were significantly up-regulated ($p < 0.05$) in BRCA (Figure 1A). The expression levels of MMP19 and MMP28, however, in BRCA were significantly decreased compared with normal samples ($p < 0.05$) (Figure 1A). The expressions of other genes in the MMP family in BRCA exhibited no statistically difference. Additionally, we further explored the differential expression of MMPs in the five subtypes of BRCA by using R package Kruskal wallis and ggplot2 (Figure 1B). In Her2 subtype, the expression levels of MMP1, MMP9, MMP11, and MMP13 were highest. In Basal and LumB subtype, the expression levels of MMP19 and MMP28 were lower than others ($p < 0.05$).

3.2 Correlation Analysis Between Matrix Metalloproteinases and Pathological Stages of Breast Cancer

Next, we want to investigate the potential correlation between the expression of MMPs and the pathological stages in BRCA. Similarly, GEPIA was used to achieve this analysis. The results showed that MMP9, MMP12, MMP15, and MMP27 groups were all highly variable ($p < 0.01$), whereas the other groups were not markedly different, indicating that these genes may play important roles in the occurrence and development of breast cancer (Figures 2A–D). Notably, the difference of MMP2 among five stages was close to 0.05 ($p = 0.0529$), which suggested that its significance may need further studies (Figure 2E).

3.3 Prognosis of the Expression of Matrix Metalloproteinases in Breast Cancer and its Subtype Patients

Our above-mentioned analyses indicated that several MMP genes were significantly expressed in BRCA. In order to



further clarify the prognostic values of these MMPs in patients with BRCA, the Kaplan-Meier Plotter database was used to analyze the recurrence-free survival (RFS) and overall survival (OS) of the genes of the MMP family. The results showed that the expression of many MMPs exhibited correlation with the RFS of BRCA patients. Concretely, patients with high MMP1, MMP7, MMP9, MMP12, and MMP15 were correlated with short RFS compared to low MMP mRNA expression ($p < 0.05$) (Figures 3A–E), whereas the patients with lower expression of MMP2, MMP8, MMP16, MMP17, MMP19, MMP20, MMP21, MMP24, MMP25, MMP26, and MMP27 had a poor survival time ($p < 0.05$) (Figure 3F–O).

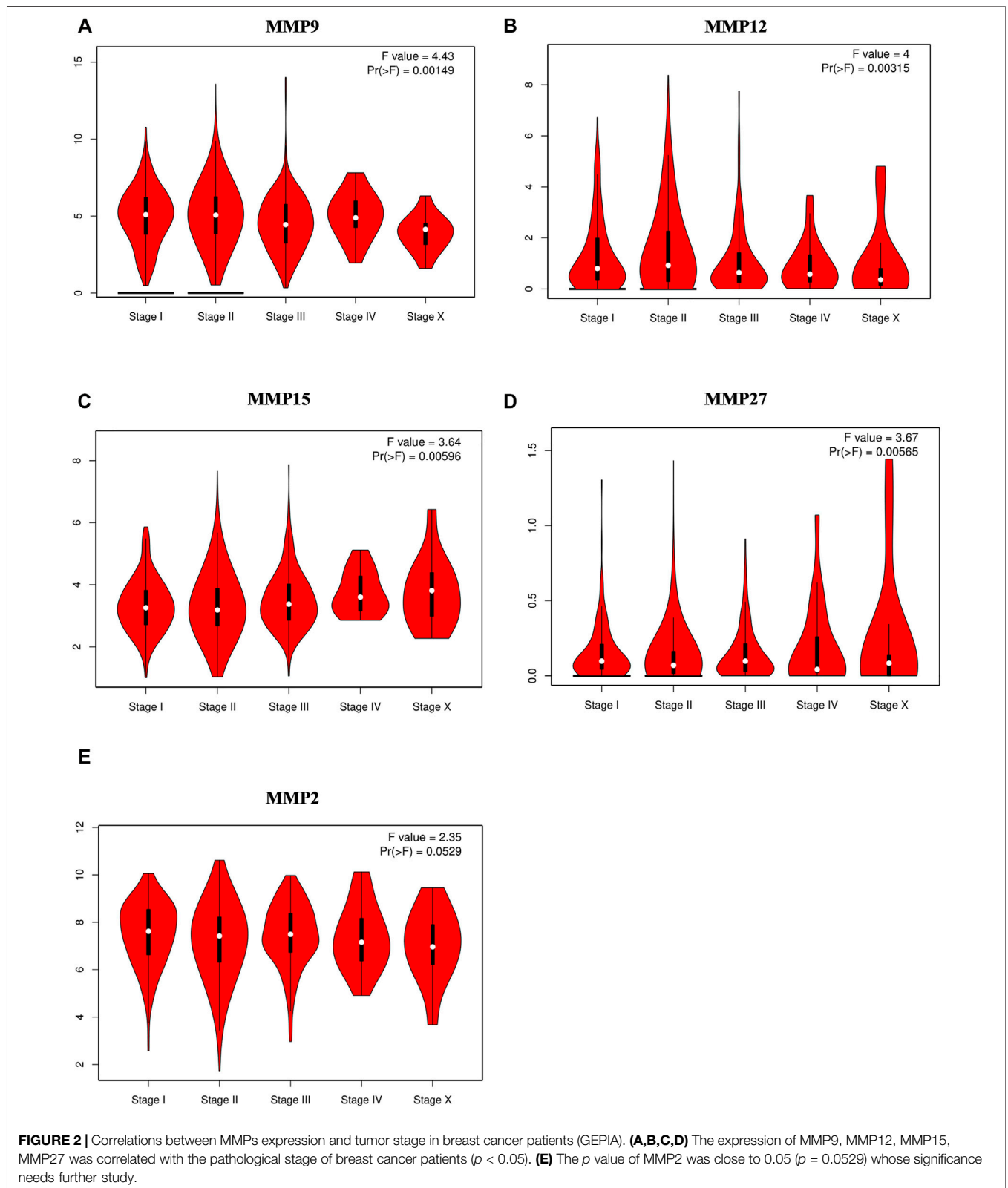
As for the OS analysis of BRCA and its subtype, it was indicated that the overall survival rate of BRCA patients with high expression of MMP1, MMP12, MMP15 were significantly lower than that of patients with low expression (Figure 4A) ($p < 0.05$). The remaining OS analysis showed no significant statistical difference ($p > 0.05$). Moreover, we explored the survival and prognosis for each subtype (Figure 4B). There were statistical significances of overall survival between five subtypes and the high expression of MMP1, MMP12 and MMP15. Notably, the

high expression of MMP15 had a poorer prognosis in Normal-like subtype than that in other subtypes ($p = 0.033$).

3.4 Matrix Metallo Proteinases Related Gene Mutation, Expression and Interaction Analysis

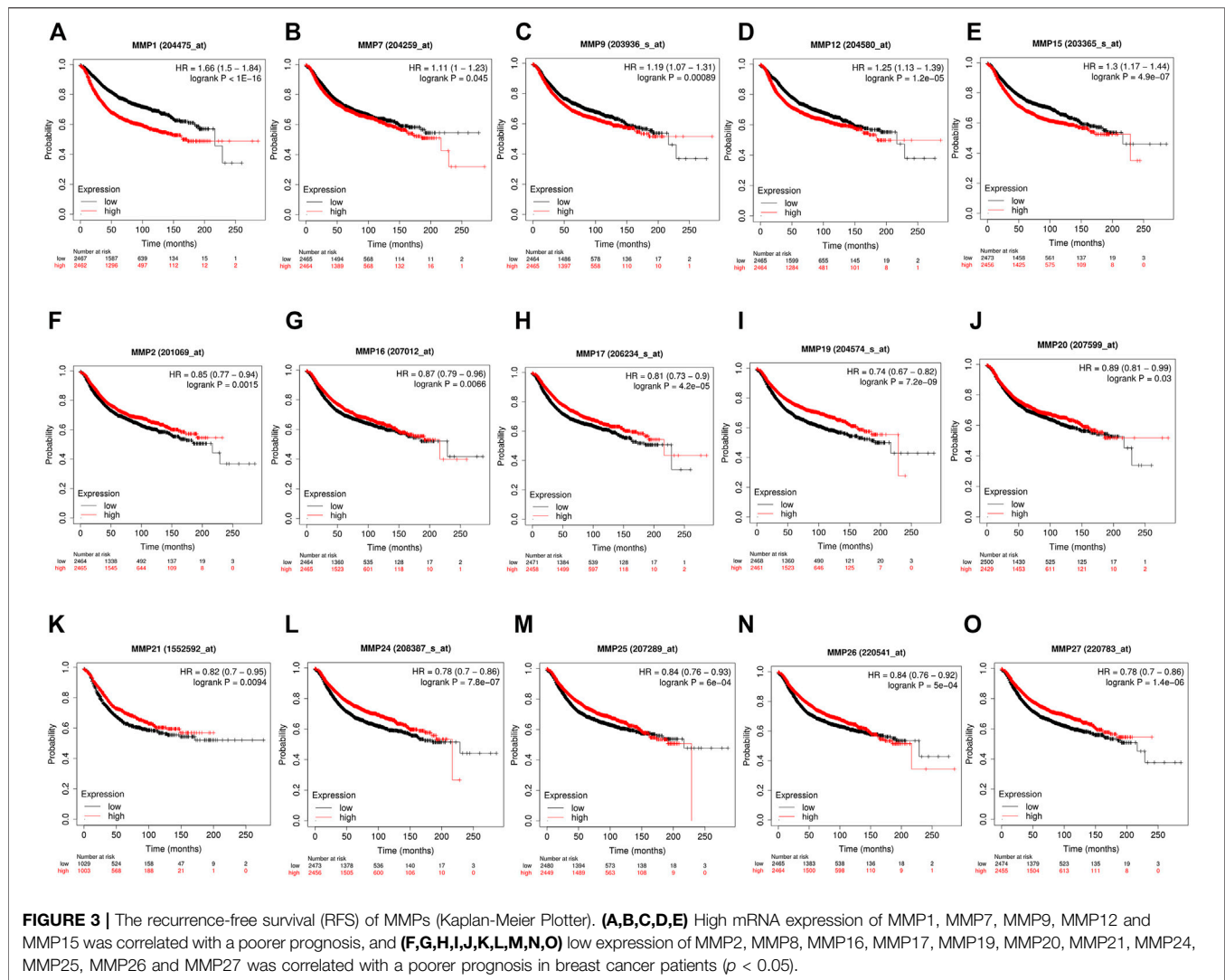
To further explore, we extracted genomic alterations by Expectation-Maximization (RSEM) value for every MMP gene in the BRCA-TCGA cohort using RNA seq values obtained from cBioPortal. In this study, a waterfall map and heat map of tumor gene mutations of the remaining genes were conducted (Figure 5), and it was found that 57% of the 1,084 samples, namely 613 cases, had genetic mutations. Among them, MMP17, MMP24, MMP25, MMP11, MMP2, MMP14 were the most common genes that had changed, and their mutation rates were 12, 8, 7, 7, 6, and 6%, respectively.

In the meanwhile, we found that in the matrix metalloproteinase mutation group, tumor protein (TP53) and phosphatidylinositol-3-kinase catalytic subunit α (PIK3CA) had the most abundant gene mutations



(Figure 6B). Secondly, we conducted survival analysis between the mutant group and the wildtype group. The results showed that there was no significant statistical difference between the

mutant group and the wildtype group (Figure 6A), while the overall survival rate in mutant MMP1 and MMP13 group was lower than the unaltered group (Figures 6C,D), which



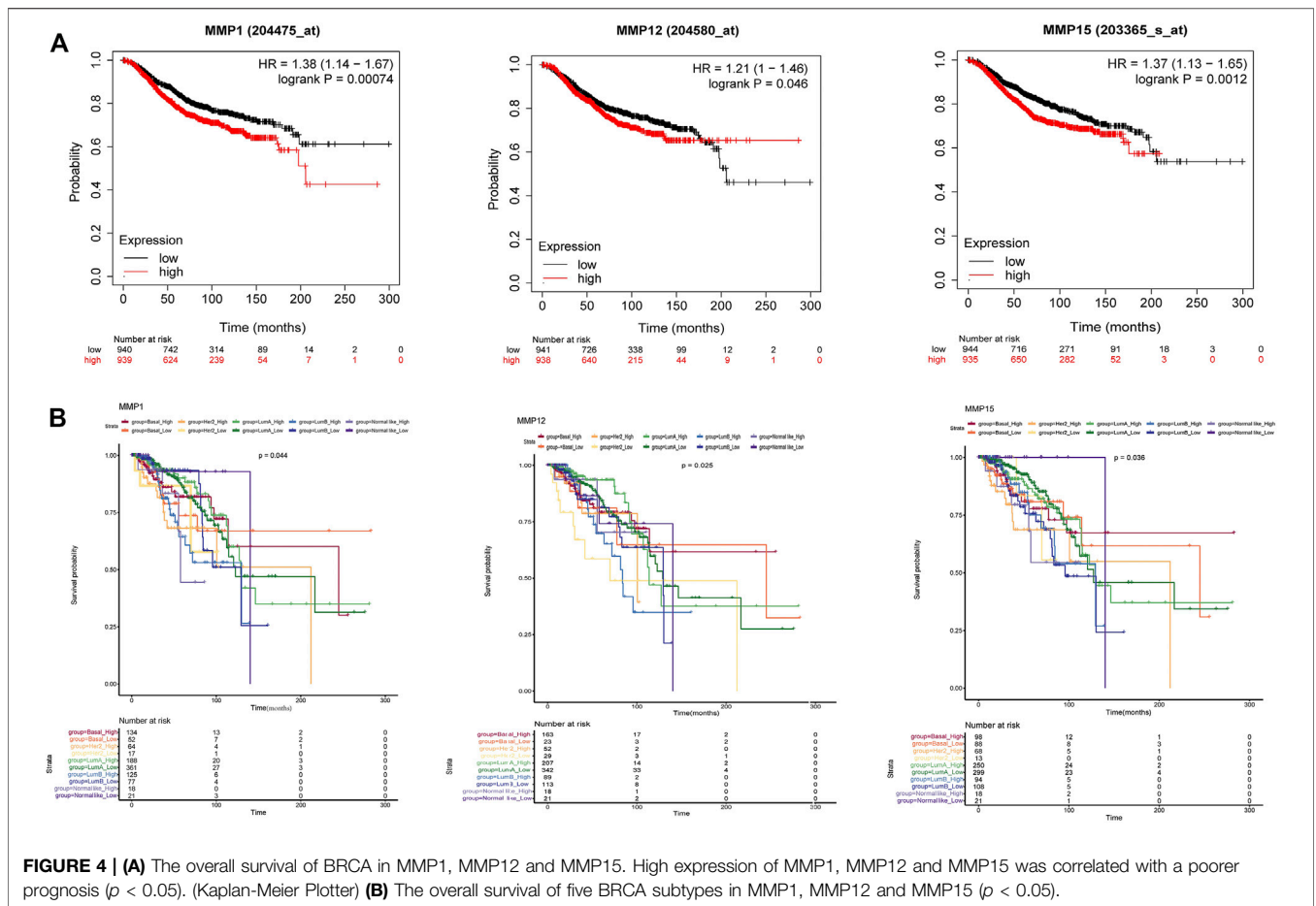
suggested that the patient with mutant MMP1 and MMP13 had a poor prognosis.

In addition, MMPs were subjected to STRING for PPI analysis, the species was set to “*Homo sapiens*”, and the other values were kept as default settings for PPI analysis. Our results showed that the PPI network had 22 nodes and 50 edges, and the average node degree was 4.55. The average local clustering coefficient was 0.519. The expected number of edges was 2. The PPI enrichment p -value was less than $1.0e-16$ (Figure 7A). Furthermore, KEGG pathway enrichment analysis obtained from STRING database showed enrichment function in parathyroid hormone synthesis, secretion and action, IL-17 signaling pathway, relaxin signaling pathway (Table 1).

Moreover, we used GeneMANIA database to analyze MMPs again and the results showed that MMPs and related molecules, such as: AC002094.3, HPX, PRG4, VTN, and the function of differentially expressed genes were mainly related to collagen metabolism process, serine hydrolase, serine peptidase, and the activity of aminopeptidase (Figure 7B).

3.5 Immune Cell Infiltration of Matrix Metalloproteinases in Breast Cancer and its Subtype Patients

Given the importance of the immune microenvironment on BRCA development, the correlation between MMPs and immune cell infiltration is another concern in the present study. For this purpose, every MMP was imported into TIMER2.0 to analyze the correlation between the infiltration of B cells, CD8⁺T cells, CD4⁺T cells, macrophages, neutrophils, and dendritic cells in BRCA, respectively (Table 2 and Figure 8A). MMP1 had a positive correlation with the infiltration of macrophages, neutrophils, and dendritic cells. MMP2, MMP13 and MMP19 were both positively associated with CD8⁺T cells, macrophages, neutrophils, and dendritic cells. Notably, MMP2 and MMP19 expressions were negatively linked to B cells infiltration. In BRCA, MMP13 expression was shown to have a negative relation with CD4⁺T cells infiltration. Regarding MMP9, CD4⁺T cells, macrophages, neutrophils, and dendritic



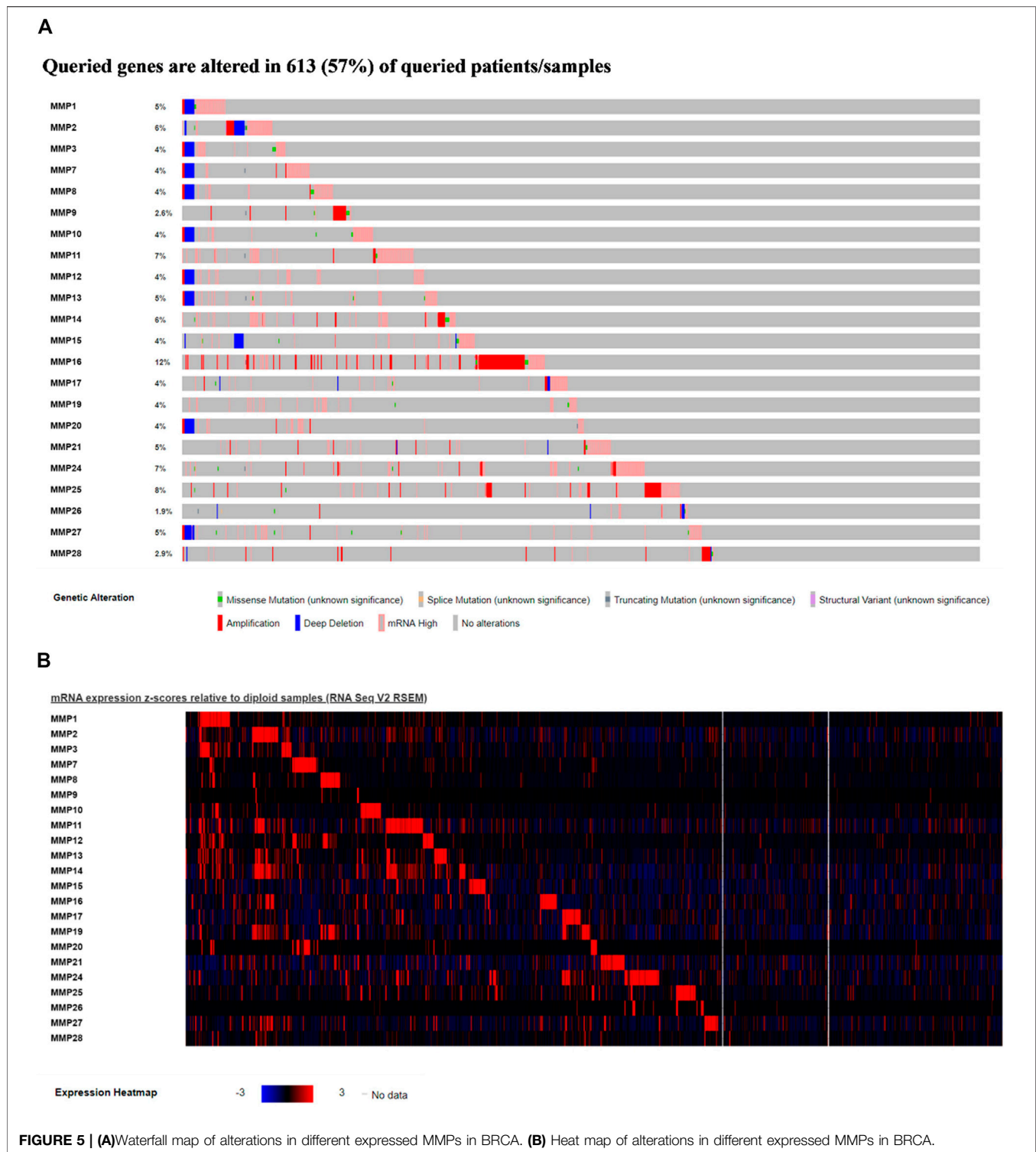
cells have a positive correlation in BRCA patients. Additionally, the infiltration of neutrophils and dendritic cells was positively associated with MMP12 expression in BRCA. Besides, we have investigated the estimate score of MMP1 and MMP9 in five subtypes of BRCA via Estimate Package. Moreover, we have investigated the stromal score, immune score, and tumor purity of five subtypes, along with the estimate score of MMP1, MMP2, MMP9, MMP12, MMP13 in five subtypes of BRCA. The results showed that estimate scores of five subtypes were positively related with the expression of MMP1, MMP2, MMP9, MMP12, and MMP13 ($p < 0.05$) (Figure 8B).

4 DISCUSSION

In recent years, the clinical treatment of BRCA has formed a comprehensive system consisting of surgical treatment, physical therapy, and drug therapy (Harbeck and Gnant 2017). However, in actual clinical application, high mortality, high recurrence rate and adverse reactions are still major problems (Chen et al., 2018). Like other malignant tumors, the metastasis of BRCA is also a multi-step complex process, which includes an important process-cancer cells penetrating the basement membrane (Zhang 2013).

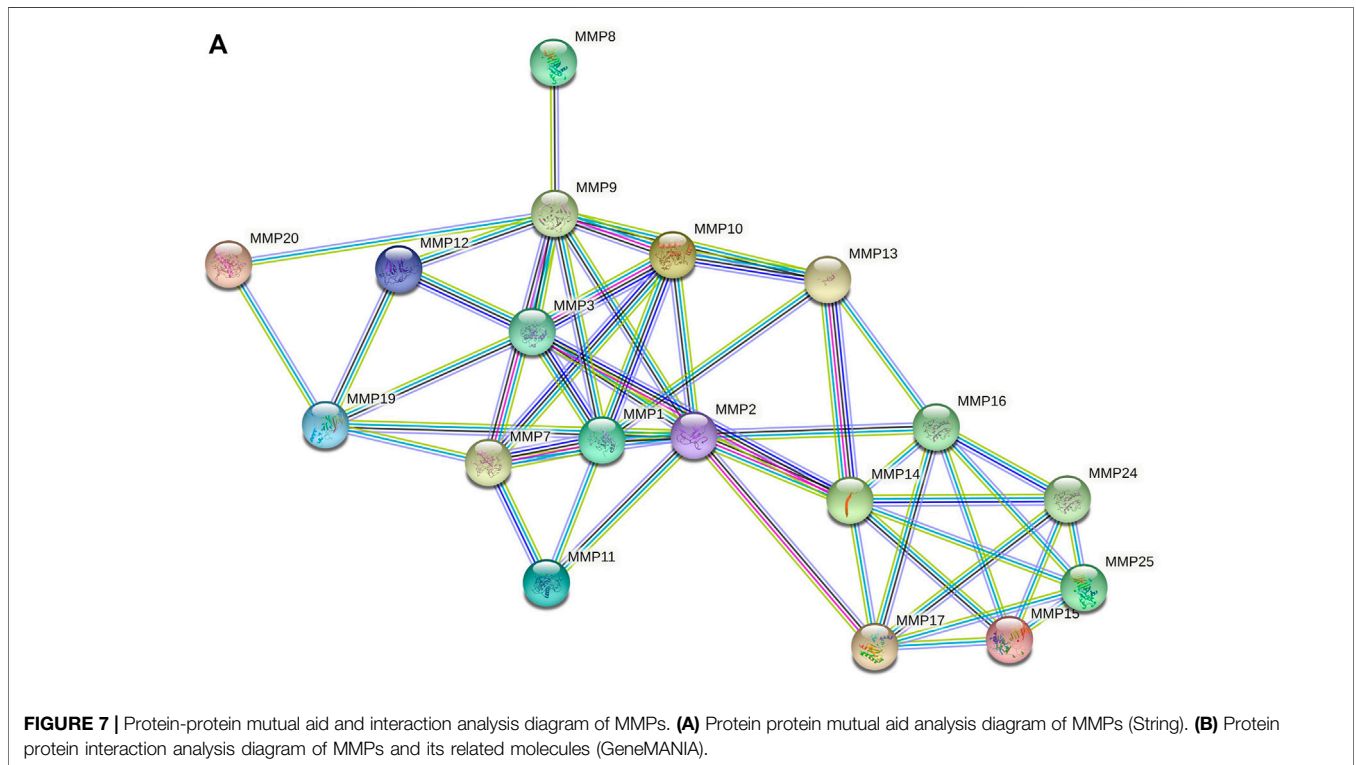
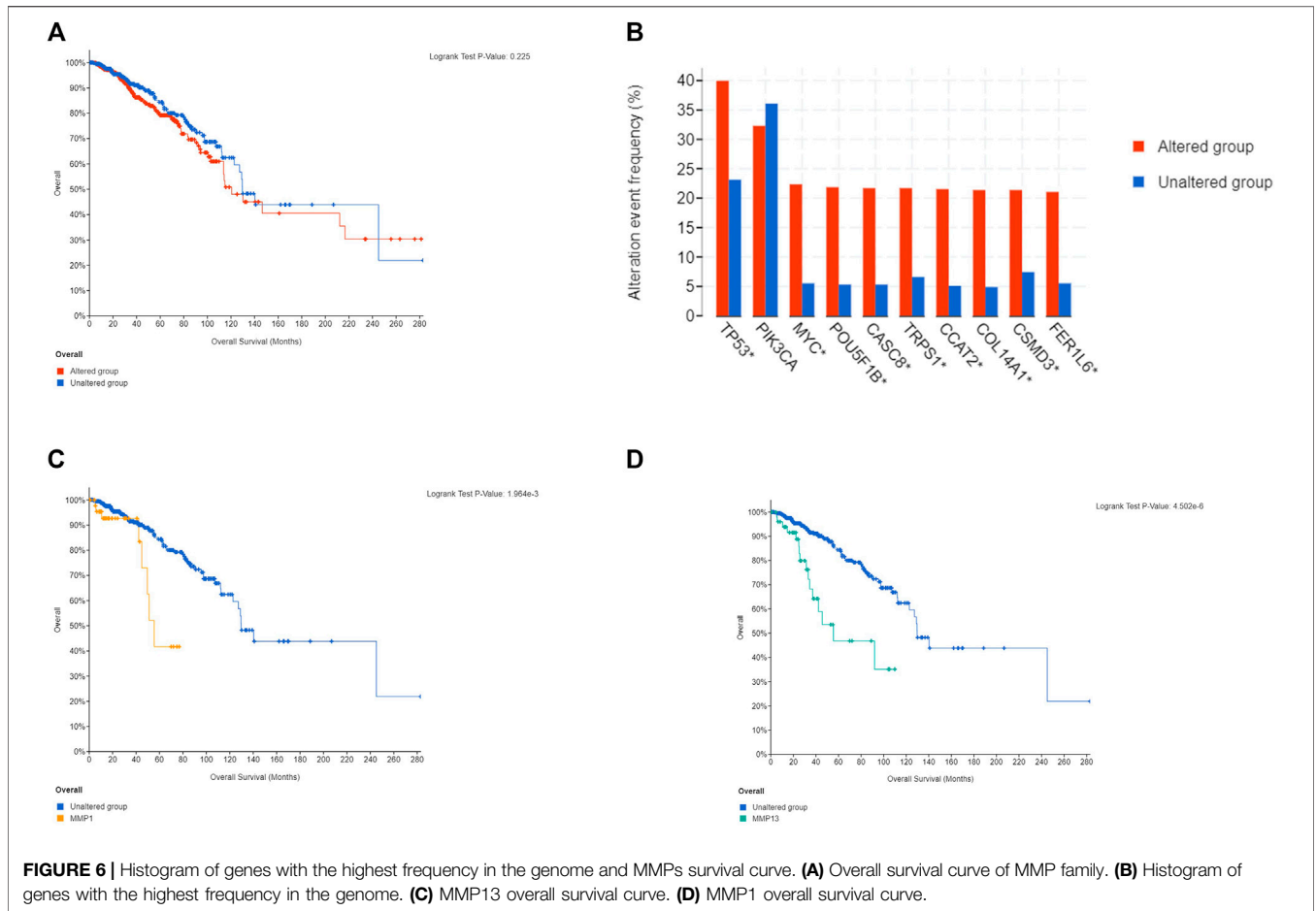
Basement membrane is the extracellular matrix (ECM) constructed by glycoproteins and proteoglycans and is located between the epithelial cell layer and the endothelial cell layer. Benign tumors are restricted to the epithelial cell layer by the basement membrane. Therefore, basement membrane is the first important line of defense against cancer invasion (John and Tuszynski 2001). Once tumor cells undergo malignant transformation, they activate the activity of basement membrane-related proteases through a variety of mechanisms, destroy the structure of the basement membrane, penetrate the basement membrane into the adjacent stroma, and start tumor cell infiltration and metastasis (Condeelis and Segall 2003; Xie and Wang 2005). In this process, MMPs play an important role.

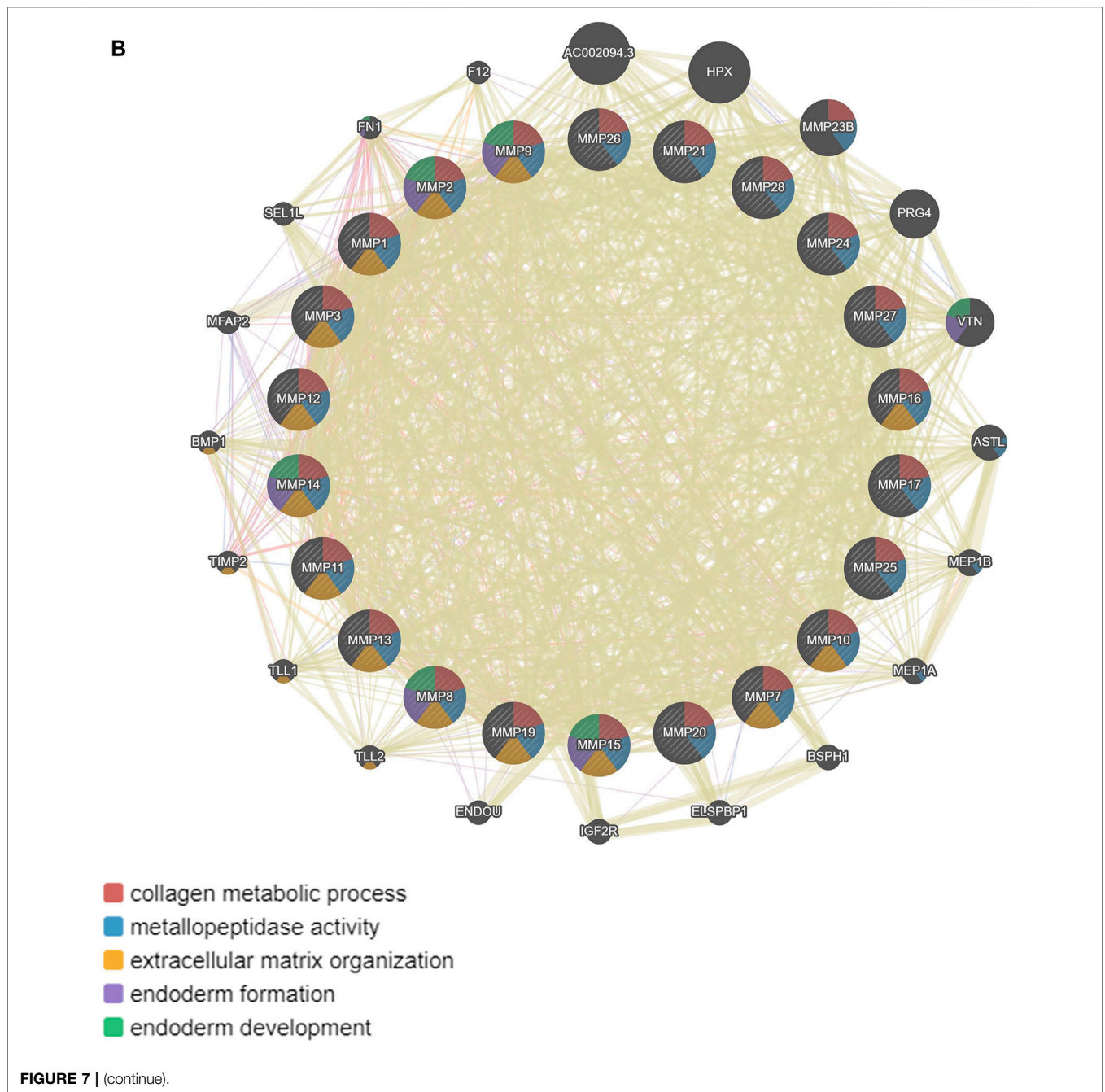
As a family of zinc-dependent proteolytic enzymes, MMPs provide pathways for tumor cell infiltration and metastasis by destroying basement membrane and ECM and damaging the metastatic barrier (Nagase et al., 2006). Therefore, MMPs have become an important factor affecting cancer metastasis, growth and poor prognosis (Egeblad and Werb 2002). In the past studies of MMPs, most of them focused on the expression and prognosis of one or several MMPs in different cancers. There has not been a systematic study of the relationship between whole MMPs and BRCA, along with its five subtypes. Due to the small sample size and some errors of



previous studies, the credibility of the conclusions of some independent studies is not high. Therefore, this study is based on bioinformatics and conducts data mining through public biological data platforms to analyze the gene expression and clinical data of BRCA and its subtypes patients, immune cell infiltration and other conditions.

MMP1 belongs to the type of collagenases, which was found to be closely related to lung squamous cell carcinoma (OuYang et al., 2003) and colon cancer (Lu et al., 2011) in previous studies. In this study, GEPIA analysis showed that the expression of MMP1 in BRCA tissues was higher than that in normal tissues. As for subtype analysis, McGowan et al. found that MMP1 was always



**TABLE 1 |** KEGG pathway enrichment of MMPs (STRING).

Description	Count in Network	Strength	False discovery rate
Parathyroid hormone synthesis, secretion and action	7 of 103	1.62	1.97e-07
IL-17 signaling pathway	5 of 92	1.52	0.00011
Relaxin signaling pathway	5 of 128	1.38	0.00026

upregulated (McGowan and Duffy 2008), especially in Her2 and Basal BRCA subtype, which was similar with our results. There are also studies showing that by inhibiting MMP1, bone

metastasis in breast cancer patients can be reduced (Lu et al., 2009). Moreover, through the Kaplan-Meier Plotter database, it was found that the high expression of MMP1 can lead to poor

TABLE 2 | Correlations between MMPs expression and immune cell infiltration Abbreviations: P, positive; N, negative; 0, without correlation; MMP, Matrix metalloproteinase.

	B Cell	CD8 ⁺ T Cell	CD4 ⁺ T Cell	Macrophage	Neutrophil	Dendritic Cell
MMP1	0	0	0	P	P	P
MMP2	N	P	0	P	P	P
MMP3	N	P	0	P	P	P
MMP7	N	0	P	0	P	P
MMP8	N	0	0	P	P	P
MMP9	0	0	P	P	P	P
MMP10	0	P	N	P	0	0
MMP11	0	P	N	P	0	0
MMP12	0	0	0	0	P	P
MMP13	0	P	N	P	P	P
MMP14	0	P	N	P	P	P
MMP15	0	0	0	0	0	P
MMP16	N	P	N	P	P	0
MMP17	0	0	0	P	N	0
MMP19	N	P	0	P	P	P
MMP20	0	0	P	0	P	P
MMP21	0	P	0	P	0	0
MMP24	0	0	0	N	N	0
MMP25	0	0	P	N	P	P
MMP26	0	0	0	0	N	N
MMP27	N	P	0	P	P	P
MMP28	N	P	0	P	N	P

prognosis of BRCA. At the same time, among BRCA patients, PIK3CA and TP53 had a high mutation rate (Lu et al., 2019). Through cBioPortal analysis, it was found that MMP1 may be related to the mutations of TP53 and PIK3CA, leading to poor prognosis of breast cancer patients. A Transwell experiment (Wang 2018) proved that when the MMP1 gene was silenced, the invasion and migration ability of BRCA was significantly reduced. In addition, collagen is also an important part of ECM (Ma et al., 2016), while MMP1 can degrade type I, II and III collagen (Singh et al., 2016). This study confirmed that MMP1 participated in collagen metabolism and the degradation of extracellular matrix tissue, promoting cancer metastasis. These results all indicate that MMP1, as an oncogene, might play an important role in the tumorigenesis and progression of BRCA, especially in Her2 and Basel subtype. The high expression of MMP1 in breast cancer tissues made it promising as one of the diagnostic markers of BRCA.

It is also worth noting the role of MMP9 in breast cancer. This study proved that high expression of MMP9 existed in BRCA patients, along with a bad prognosis, and there was a close relationship between the expression level of MMP9 and the pathological stage of the tumor. In an animal study, Mendes et al. (Mendes et al., 2005) found that MMP9 inhibitors significantly reduced the occurrence of breast cancer metastases in brain. As for the subtype analysis, overexpression of MMP9 revealed itself as a prominent feature of Basel and Her2 breast cancers (Yousef et al., 2014), which was almost consistent with our results. Moreover, through TIMER2.0 analysis, it was found that MMP9 had a significant positive correlation with CD4⁺ T cells, dendritic cells, macrophages, and neutrophils, indicating that MMP9 may be involved in the immune cell infiltration process of breast cancer tissues. The microenvironment affects tumor growth. By regulating MMP9, it

can interfere with the activities of the tumor microenvironment, thereby inhibiting the metastasis of cancer cells (Si et al., 2021). Even in the urine of BRCA patients, the level of MMP9 was significantly higher than that of normal people (Shen et al., 2010). This is of great significance for breast cancer diagnosis.

In addition to MMP1 and MMP9, it was also found that other MMPs may be related to the prognosis of BRCA in this study. MMP12 had a significant relationship with the pathological stage of breast cancer patients, and patients with high expression levels of MMP12 had a poor prognosis. Studies have shown that CXCR4 mediates MMP12 to degrade the matrix, leading to breast cancer infiltration and growth (Hernandez et al., 2011). MMP15 may increase the level of integrin 6 (ITGB6) by mediating Rho-Rac pathway, leading to breast cancer cell metastasis (Desai et al., 2016), which is consistent with the poor prognosis of breast cancer patients caused by high-level expression of MMP15 in this study. Overexpression of MMP15 had a notably poorer prognosis in Nomal-like subtype patients than that in other subtypes. Besides, highly expressed MMP7 can reduce the survival rate of breast cancer. In the study of Sizemore et al. (Sizemore et al., 2014), it was found that the high expression of MMP7 and the hypomethylation of the MMP7 promoter can lead to the deterioration of breast tumors. In this study, MMP13 was also highly expressed, which was more prone to connective tissue expression than other MMPs (Vincenti and Brinckerhoff 2002). Among the subtypes, the expression of MMP13 in Her2 and subtype was the highest. Our analysis also indicated this approximate result (Kim et al., 2014). MMP13 can degrade not only type II collagen and proteoglycan in cartilage, but also type IV and type IX collagen, osteonectin and basement membrane proteoglycan (Shiomi et al., 2010), and participate in the degradation of ECM. At the same time, the overexpression of MMP13 was associated with shortened overall survival of patients

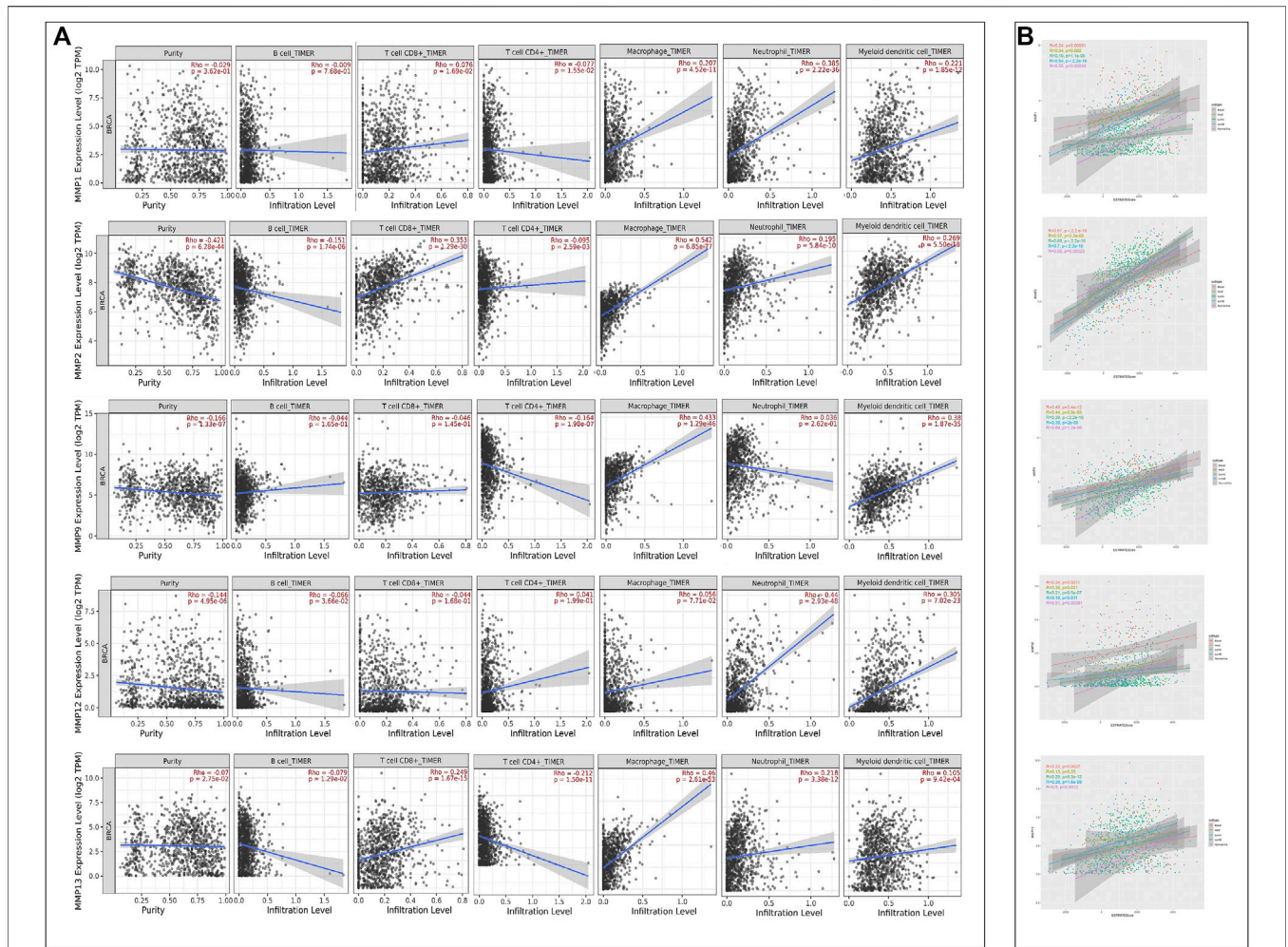


FIGURE 8 | (A) Correlations between MMPs expression and immune cell infiltration (TIMER). **(B)** The ESTIMATE Scores of MMPs. The expression levels of MMP1, MMP2, MMP9, MMP12 and MMP13 in five BRCA subtypes were positively associated with the ESTIMATE Scores.

(Zhang et al., 2008; Yin and Xia 2013). MMP13 played an important role in the metastasis and invasion of cancer and may be used as one of the prognostic indicators of breast cancer, particularly in Her2 subtype.

In this study of BRCA patients, MMP19 was lowly expressed. The low expression of MMP19 can promote the deterioration and growth of some tumors, such as nasopharyngeal carcinoma. Chan et al. (Chan et al., 2011) believed that MMP19 can inhibit tumors and anti-angiogenesis, but the mechanism of MMP19 for tumor suppression was still unclear. However, the high expression of MMP19 can also lead to the deterioration and poor prognosis of other tumors, such as colorectal cancer (Chen et al., 2019) and glioma (Luo et al., 2018). At present, there are too few studies on MMP19 and breast cancer, and no clear conclusions have been formed. At the same time, this study also found that patients with low MMP19 expression had a poor survival prognosis, and the mechanism needs further study. In addition, TIMER2.0 showed that MMP19 was positively correlated with CD8⁺ T cells, which may be related to pro-inflammatory cytokines (Beck et al., 2008),

especially with lymphocyte chemotaxis and interferon-induced T cell a chemotactic agent (I- TAC) related.

The immune cells contained in tumor microenvironment (TME) had cancer-promoting and anti-tumor effects, which can affect the progression and recurrence of tumors (Zhou et al., 2021). Analysis of the correlation between MMPs and six types of immune cell infiltration through TIMER2.0 proved that MMPs were not only related to the prognosis of breast cancer, but also reflected the immune cell infiltration status of tumor cells. Regarding the analysis of subtypes, our results showed that estimate scores of five subtypes were positively related with the expression of MMP1, MMP2, MMP9, MMP12, and MMP13. Our results showed that low tumor purity of BRCA subtypes had a higher malignancy and worse prognosis, whereas had stronger immunophenotypes, which was consistent with some studies of glioma tumors (Zhang et al., 2017) and colon cancer (Mao et al., 2018).

In addition, we discovered through the STRING database and the GeneMANIA database that MMPs were related to the

synthesis and secretion pathway of parathyroid hormone, IL-17 signaling pathway, relaxin signaling pathway, the process of collagen metabolism, and the effect on the activity of serine hydrolase, serine peptidase, and aminopeptidase: 1) Breast cancer patients produce more parathyroid hormone than normal people (Li et al., 2010), leading to hypercalcemia, and promote breast cancer invasion and bone metastasis through autocrine, paracrine and exocytosis mechanisms (Tovar Sepulveda and Falzon 2002). 2) As a cytokine, interleukin 17 (IL-17) relates to several inflammatory diseases with its pleiotropic effects (Bettelli et al., 2007). Obradović et al. investigated that the increase of MMP9 was stimulated by IL-17 via downregulating ERK1/2 activation (Obradović et al., 2016). It was also indicated that IL-17 could induce elevated expression of MMP-1 via p38 MAPK- and NF-kappaB, ERK-dependent AP-1 activation (Cortez et al., 2007). As previously described, IL-17 had a prominent effect on the modulation of MMP (Jovanovic et al., 2000; Singh et al., 2018). 3) In previous studies, relaxin has a close connection with MMPs improving the tumor metastasis. The study of Chow et al. investigated the extent that the NO pathway was involved in positive functions of relaxin regulating MMP1, MMP2, MMP9 and MMP13 (Chow et al., 2012). Ma et al. provided the evidence that relaxin siRNA could down-regulate the expression of MMP9, thus promoted the proliferation, invasion, and metastasis of tumor cells (Ma et al., 2013). The mechanism of enhanced invasiveness may lie in the formation of MT1-MMP-enriched invadopodia by overexpression of relaxin (Bialek et al., 2011). 4) Collagen IV is the main component of the extracellular matrix, so its degradation is related to the infiltration and spread of malignant tumors. Related studies have shown that the high expression of MMP2 and MMP9 is positively correlated with the degradation of collagen IV (Ma et al., 2016). 5) According to Jun research (Jun et al., 2020), ABHD12 is a serine hydrolase that can inhibit the growth, proliferation, migration, and invasion of breast cancer cells. 6) Abnormal overexpression of human kallikrein-related peptidase 6 (KLK6) among serine peptidases is one of the characteristics of a subset of breast cancer. Pampalakis' experiments (Pampalakis et al., 2019) showed that its overexpression was related to the increased ability of breast cancer cells to metastasize to the lung, the increased expression of certain S100 proteins and keratins, and the down-

regulation of apoptosis-related proteases 6. Feng et al. (2016) (Feng et al., 2016) used the immunohistochemical SP method to detect the expression of aminopeptidase in 80 cases, and found that the positive expression rate of aminopeptidase in breast cancer was much higher than that of normal breast tissue adjacent to cancer. These six points are consistent with the research of this article. MMPs may affect the above six points and cause the invasion and metastasis of breast cancer.

5 CONCLUSION

MMPs play multiple biological roles in the pathogenesis and development of breast cancer. MMP1 and MMP9 can be used as independent prognostic factors to predict the prognosis of breast cancer patients, in order to further study the pathological mechanism and possible treatment targets for breast cancer, especially for Her2 and Basel subtypes.

DATA AVAILABILITY STATEMENT

The original contributions presented in the study are included in the article/Supplementary Material, further inquiries can be directed to the corresponding author.

AUTHOR CONTRIBUTIONS

TC planned, carried out the analysis and wrote the article. PC and JC analyzed the study data and helped draft the manuscript. YD assisted with data collection and the analysis. CH was the administrator of project.

FUNDING

This work was supported by Dr. Neher's Biophysics Laboratory for Innovative Drug Discovery (File no. 001/2020/ALC), and by the Science and Technology Development Fund (File no. 0020/2021/A).

REFERENCES

- Beck, I. M., Rückert, R., Brandt, K., Mueller, M. S., Sadowski, T., Brauer, R., et al. (2008). MMP19 Is Essential for T Cell Development and T Cell-Mediated Cutaneous Immune Responses. *Plos One* 3 (6), e2343. doi:10.1371/journal.pone.0002343
- Beeghly-Fadiel, A., Shu, X.-o., Long, J., Li, C., Cai, Q., Cai, H., et al. (2009). Genetic Polymorphisms in the MMP-7 gene and Breast Cancer Survival. *Int. J. Cancer* 124 (1), 208–214. doi:10.1002/ijc.23859
- Bettelli, E., Oukka, M., and Kuchroo, V. K. (2007). TH-17 Cells in the circle of Immunity and Autoimmunity. *Nat. Immunol.* 8 (4), 345–350. doi:10.1038/ni0407-345
- Bialek, J., Kunanuvat, U., Hombach-Klonisch, S., Spens, A., Stetefeld, J., Sunley, K., et al. (2011). Relaxin Enhances the Collagenolytic Activity and *In Vitro* Invasiveness by Upregulating Matrix Metalloproteinases in Human Thyroid Carcinoma Cells. *Mol. Cancer Res.* 9 (6), 673–687. doi:10.1158/1541-7786.Mcr-10-0411
- Cerofolini, L., Fragai, M., and Luchinat, C. (2019). Mechanism and Inhibition of Matrix Metalloproteinases. *Cmc* 26 (15), 2609–2633. doi:10.2174/0929867325666180326163523
- Chan, K. C., Ko, J. M. Y., Lung, H. L., Sedlacek, R., Zhang, Z.-F., Luo, D.-Z., et al. (2011). Catalytic Activity of Matrix Metalloproteinase-19 Is Essential for Tumor Suppressor and Anti-angiogenic Activities in Nasopharyngeal Carcinoma. *Int. J. Cancer* 129 (8), 1826–1837. doi:10.1002/ijc.25855
- Chen, W., Sun, K. X., Sun, K., Zheng, R., Zeng, H., Zhang, S., et al. (2018). Cancer Incidence and Mortality in China, 2014. *Chin. J. Cancer Res.* 30 (1), 1–12. doi:10.21147/j.issn.1000-9604.2018.01.01
- Chen, Z., Wu, G., Ye, F., Chen, G., Fan, Q., Dong, H., et al. (2019). High Expression of MMP19 Is Associated with Poor Prognosis in Patients with Colorectal Cancer. *Bmc Cancer* 19, 9. doi:10.1186/s12885-019-5673-6
- Cheng, C.-W., Yu, J.-C., Wang, H.-W., Huang, C.-S., Shieh, J.-C., Fu, Y.-P., et al. (2010). The Clinical Implications of MMP-11 and CK-20 Expression in Human Breast Cancer. *Clinica Chim. Acta* 411 (3-4), 234–241. doi:10.1016/j.cca.2009.11.009

- Chow, B. S. M., Chew, E. G. Y., Zhao, C., Bathgate, R. A. D., Hewitson, T. D., and Samuel, C. S. (2012). Relaxin Signals through a RXFP1-pERK-nNOS-NO-cGMP-dependent Pathway to Up-Regulate Matrix Metalloproteinases: the Additional Involvement of iNOS. *Plos One* 7 (8), e42714. doi:10.1371/journal.pone.0042714
- Condeelis, J., and Segall, J. E. (2003). Intravital Imaging of Cell Movement in Tumours. *Nat. Rev. Cancer* 3 (12), 921–930. doi:10.1038/nrc1231
- Cortez, D. M., Feldman, M. D., Mummidi, S., Valente, A. J., Steffensen, B., Vincenti, M., et al. (2007). IL-17 Stimulates MMP-1 Expression in Primary Human Cardiac Fibroblasts via P38 MAPK- and ERK1/2-dependent C/EBP- β , NF-Kb, and AP-1 Activation. *Am. J. Physiology-Heart Circulatory Physiol.* 293 (6), H3356–H3365. doi:10.1152/ajpheart.00928.2007
- Curigliano, G., Burstein, H. J., Winer, E. P., Gnant, M., Dubsy, P., Loibl, S., et al. (2017). De-escalating and Escalating Treatments for Early-Stage Breast Cancer: the St. Gallen International Expert Consensus Conference on the Primary Therapy of Early Breast Cancer 2017. *Ann. Oncol.* 28 (8), 1700–1712. doi:10.1093/annonc/mdx308
- Desai, K., Nair, M. G., Prabhu, J. S., Vinod, A., Korlimarla, A., Rajarajan, S., et al. (2016). High Expression of Integrin β 6 in Association with the Rho-Rac Pathway Identifies a Poor Prognostic Subgroup within HER 2 Amplified Breast Cancers. *Cancer Med.* 5 (8), 2000–2011. doi:10.1002/cam4.756
- Egeblad, M., and Werb, Z. (2002). New Functions for the Matrix Metalloproteinases in Cancer Progression. *Nat. Rev. Cancer* 2 (3), 161–174. doi:10.1038/nrc745
- Endres, M., Kneitz, S., Orth, M. F., Perera, R. K., Zerneck, A., and Butt, E. (2016). Regulation of Matrix Metalloproteinases (MMPs) Expression and Secretion in MDA-MB-231 Breast Cancer Cells by LIM and SH3 Protein 1 (LASP1). *Oncotarget* 7 (39), 64244–64259. doi:10.18632/oncotarget.11720
- Feng, L., Zhao, Y. Z., Cao, W. Q., and Zhang, J. (2016). Amino-peptidase N Expression and its Correlation with MMP-2, MMP-9 in Breast Cancer. *J. Dalian Med. Univ.* 38 (03), 219–223. doi:10.11724/jdmu.2016.03.03
- Gao, J., Aksoy, B. A., Dogrusoz, U., Dresdner, G., Gross, B., Sumer, S. O., et al. (2013). Integrative Analysis of Complex Cancer Genomics and Clinical Profiles Using the cBioPortal. *Sci. Signal.* 6 (269), p11. doi:10.1126/scisignal.2004088
- Harbeck, N., and Gnant, M. (2017). Breast Cancer. *The Lancet* 389 (10074), 1134–1150. doi:10.1016/s0140-6736(16)31891-8
- Hernandez, L., Magalhaes, M. A., Coniglio, S. J., Condeelis, J. S., and Segall, J. E. (2011). Opposing Roles of CXCR4 and CXCR7 in Breast Cancer Metastasis. *Breast Cancer Res.* 13 (6), 17. doi:10.1186/bcr3074
- John, A., and Tuszynski, G. (2001). The Role of Matrix Metalloproteinases in Tumor Angiogenesis and Tumor Metastasis. *Pathol. Oncol. Res.* 7 (1), 14–23. doi:10.1007/bf03032599
- Jovanovic, D. V., Martel-Pelletier, J., Di Battista, J. A., Mineau, F., Jolicoeur, F.-C., Benderdour, M., et al. (2000). Stimulation of 92-kd Gelatinase (Matrix Metalloproteinase 9) Production by Interleukin-17 in Human Monocyte/macrophages: a Possible Role in Rheumatoid Arthritis. *Arthritis Rheum.* 43 (5), 1134–1144. doi:10.1002/1529-0131(200005)43:5<1134::aid-anr24>3.0.co;2-#
- Jun, S., Kim, S. W., Lim, J.-Y., and Park, S.-J. (2020). ABHD12 Knockdown Suppresses Breast Cancer Cell Proliferation, Migration and Invasion. *Anticancer Res.* 40 (5), 2601–2611. doi:10.21873/anticancer.14231
- Kessenbrock, K., Plaks, V., and Werb, Z. (2010). Matrix Metalloproteinases: Regulators of the Tumor Microenvironment. *Cell* 141 (1), 52–67. doi:10.1016/j.cell.2010.03.015
- Kim, G.-E., Lee, J. S., Choi, Y.-D., Lee, K.-H., Lee, J. H., Nam, J. H., et al. (2014). Expression of Matrix Metalloproteinases and Their Inhibitors in Different Immunohistochemical-Based Molecular Subtypes of Breast Cancer. *Bmc Cancer* 14, 959. doi:10.1186/1471-2407-14-959
- Li, N., Liu, M., Liu, X. M., and Li, C. Y. (2010). Correlation between Parathyroid Hormone Related Protein and Bone Metastasis in Lung Cancer and Breast Cancer. *Hebei Med. J.* 32 (14), 1854–1856. doi:10.3969/j.issn.1002-7386.2010.14.012
- Li, T., Fan, J., Wang, B., Traugh, N., Chen, Q., Liu, J. S., et al. (2017). TIMER: A Web Server for Comprehensive Analysis of Tumor-Infiltrating Immune Cells. *Cancer Res.* 77 (21), e108–e110. doi:10.1158/0008-5472.Can-17-0307
- Lu, Q. R., Liu, J. X., Yu, E. Q., and Sun, J. (2019). Detection and Clinical Significance of Plk3ca, TP53, PTEN Genes Mutation in Breast Cancer on Next-Generation Sequencing. *Chin. J. Curr. Adv. Gen. Surg.* 22 (07), 530–535. doi:10.3969/j.issn.1009-9905.2019.07.008
- Lu, X., Wang, Q., Hu, G., Van Poznak, C., Fleisher, M., Reiss, M., et al. (2009). ADAMTS1 and MMP1 Proteolytically Engage EGF-like Ligands in an Osteolytic Signaling cascade for Bone Metastasis. *Genes Dev.* 23 (16), 1882–1894. doi:10.1101/gad.1824809
- Lu, Z. H., Fang, Y. J., Wu, X. J., Pan, Z. Z., and Wan, D. S. (2011). Expression and Significance of Matrix Metalloproteinase-1 in colon Cancer. *Natl. Med. J. China* 2011 (41), 2895–2898. doi:10.3760/cma.j.issn.0376-2491.2011.41.005
- Luo, J., and Zhou, L. (2020). Progress of Exosome in the Diagnosis and Treatment of Brain Metastasis of Breast Cancer. *Tumor* 40 (05), 361–370.
- Luo, Q., Luo, H., Chen, X., Yan, P., Fu, H., Huang, H., et al. (2018). The Expression of MMP19 and its Clinical Significance in Glioma. *Int. J. Clin. Exp. Pathol.* 11 (11), 5407–5412.
- Ma, J. F., Liu, L., Yang, W. J., Zang, L. N., and Xi, Y. M. (2013). RNAi-mediated Knockdown of Relaxin Decreases *In Vitro* Proliferation and Invasiveness of Osteosarcoma MG-63 Cells by Inhibition of MMP-9. *Eur. Rev. Med. Pharmacol. Sci.* 17 (8), 1102–1109.
- Ma, J., Qiu, H., Zhang, Q., and Xu, Z. F. (2016). Expression and Clinical Significance of Type IV Collagen in Breast Cancer. *Hinese J. Woman Child Health Res.* 27 (S1), 303–304.
- Mao, Y., Feng, Q., Zheng, P., Yang, L., Liu, T., Xu, Y., et al. (2018). Low Tumor Purity Is Associated with Poor Prognosis, Heavy Mutation burden, and Intense Immune Phenotype in colon Cancer. *Cmar* 10, 3569–3577. doi:10.2147/cmar.S171855
- McGowan, P. M., and Duffy, M. J. (2008). Matrix Metalloproteinase Expression and Outcome in Patients with Breast Cancer: Analysis of a Published Database. *Ann. Oncol.* 19 (9), 1566–1572. doi:10.1093/annonc/mdn180
- Mendes, O., Kim, H.-T., and Stoica, G. (2005). Expression of MMP2, MMP9 and MMP3 in Breast Cancer Brain Metastasis in a Rat Model. *Clin. Exp. Metastasis* 22 (3), 237–246. doi:10.1007/s10585-005-8115-6
- Nagase, H., Visse, R., and Murphy, G. (2006). Structure and Function of Matrix Metalloproteinases and TIMPs. *Cardiovasc. Res.* 69 (3), 562–573. doi:10.1016/j.jcardiores.2005.12.002
- Nagy, Á., Lániczky, A., Menyhart, O., and Györfy, B. (2018). Validation of miRNA Prognostic Power in Hepatocellular Carcinoma Using Expression Data of Independent Datasets. *Sci. Rep.* 8 (1), 9227. doi:10.1038/s41598-018-27521-y
- Obradović, H., Krstić, J., Kukulj, T., Trivanović, Đ., Đorđević, I. O., Mojsilović, S., et al. (2016). Doxycycline Inhibits IL-17-Stimulated MMP-9 Expression by Downregulating ERK1/2 Activation: Implications in Myogenic Differentiation. *Mediators Inflamm.* 2016, 1–11. doi:10.1155/2016/2939658
- OuYang, Q. C., Hu, C. P., Liang, Q. H., Shi, L. J., Wu, E. S., Yang, H. Z., et al. (2003). Gene Expression of MMP1 and TIMP1 in Lung Cancer Detected with a cDNA Microarray Technique. *Hunan Yi Ke Da Xue Xue Bao* 28 (03), 227–228. doi:10.3321/j.issn:1672-7347.2003.03.008
- Pampalakis, G., Zingkou, E., Sidiropoulos, K. G., Diamandis, E. P., Zoumpourlis, V., Yousef, G. M., et al. (2019). Biochemical Pathways Mediated by KLK 6 Protease in Breast Cancer. *Mol. Oncol.* 13 (11), 2329–2343. doi:10.1002/1878-0261.12493
- Perez-Rivas, L. G., Jerez, J. M., Fernandez-De Sousa, C. E., De Luque, V., Quero, C., Pajares, B., et al. (2012). Serum Protein Levels Following Surgery in Breast Cancer Patients: A Protein Microarray Approach. *Int. J. Oncol.* 41 (6), 2200–2206. doi:10.3892/ijo.2012.1667
- Radenkovic, S., Konjevic, G., Jurisic, V., Karadzic, K., Nikitovic, M., and Gopcevic, K. (2014). Values of MMP-2 and MMP-9 in Tumor Tissue of Basal-like Breast Cancer Patients. *Cell Biochem Biophys* 68 (1), 143–152. doi:10.1007/s12013-013-9701-x
- Ren, H., Shen, Z., Shen, J., Zhang, Y., and Zhang, Y. (2020). Diagnostic Value of Doppler Ultrasound Parameters Combined with MMP-11 in Early Breast Cancer and Benign Breast Diseases. *Oncol. Lett.* 20 (2), 1028–1032. doi:10.3892/ol.2020.11676
- Shen, Z. Z., Gu, J., Zhao, W., and Zhang, Z. Q. (2010). The Clinical Significance of Urinary MMP-9 and MMP-9/NGAL Complex in Breast Disease in Female Population. *Med. J. West China* 22 (03), 423–425. doi:10.3969/j.issn.1672-3511.2010.03.011
- Shiomi, T., Lemaitre, V., D'Armiento, J., and Okada, Y. (2010). Matrix Metalloproteinases, a Disintegrin and Metalloproteinases, and a Disintegrin and Metalloproteinases with Thrombospondin Motifs in Non-neoplastic Diseases. *Pathol. Int.* 60 (7), 477–496. doi:10.1111/j.1440-1827.2010.02547.x

- Si, H. L., Zhang, J., Ma, Y. M., Ma, Y. Y., Xiao, H. J., Fang, Y., et al. (2021). Experimental Study on Regulation of MMP2, MMP9, CXCL1 and CXCL2 in Microenvironment of Liver Cancer and Lung Metastasis by Peiyuan Kang'ai Decoction Combined with Tegafur. *Liaoning J. Traditional Chin. Med.* 48 (04), 184–187+225. doi:10.13192/j.issn.1000-1719.2021.04.051
- Singh, S., Maniakis-Grivas, G., Singh, U. K., Asher, R. M., Mauri, F., Elkington, P. T., et al. (2018). Interleukin-17 Regulates Matrix Metalloproteinase Activity in Human Pulmonary Tuberculosis. *J. Pathol.* 244 (3), 311–322. doi:10.1002/path.5013
- Singh, W., Fields, G., Christov, C., and Karabencheva-Christova, T. (2016). Effects of Mutations on Structure-Function Relationships of Matrix Metalloproteinase-1. *Ijms* 17 (10), 1727. doi:10.3390/ijms17101727
- Sizemore, S. T., Sizemore, G. M., Booth, C. N., Thompson, C. L., Silverman, P., Bebek, G., et al. (2014). Hypomethylation of the MMP7 Promoter and Increased Expression of MMP7 Distinguishes the Basal-like Breast Cancer Subtype from Other Triple-Negative Tumors. *Breast Cancer Res. Treat.* 146 (1), 25–40. doi:10.1007/s10549-014-2989-4
- Stankovic, S., Konjevic, G., Gopcevic, K., Jovic, V., Inic, M., and Jurisic, V. (2010). Activity of MMP-2 and MMP-9 in Sera of Breast Cancer Patients. *Pathol. - Res. Pract.* 206 (4), 241–247. doi:10.1016/j.prp.2009.12.003
- Sung, H., Ferlay, J., Siegel, R. L., Laversanne, M., Soerjomataram, I., Jemal, A., et al. (2021). Global Cancer Statistics 2020: GLOBOCAN Estimates of Incidence and Mortality Worldwide for 36 Cancers in 185 Countries. *CA A. Cancer J. Clin.* 71 (3), 209–249. doi:10.3322/caac.21660
- Szkarczyk, D., Gable, A. L., Lyon, D., Junge, A., Wyder, S., Huerta-Cepas, J., et al. (2019). STRING V11: Protein-Protein Association Networks with Increased Coverage, Supporting Functional Discovery in Genome-wide Experimental Datasets. *Nucleic Acids Res.* 47 (D1), D607–d613. doi:10.1093/nar/gky1131
- Tang, Z., Li, C., Kang, B., Gao, G., Li, C., and Zhang, Z. (2017). GEPIA: a Web Server for Cancer and normal Gene Expression Profiling and Interactive Analyses. *Nucleic Acids Res.* 45 (W1), W98–w102. doi:10.1093/nar/gkx247
- Têtu, B., Brisson, J., Wang, C. S., Lapointe, H., Beaudry, G., Blanchette, C., et al. (2006). The Influence of MMP-14, TIMP-2 and MMP-2 Expression on Breast Cancer Prognosis. *Breast Cancer Res.* 8 (3), R28. doi:10.1186/bcr1503
- Tomczak, K., Czerwińska, P., and Wiznerowicz, M. (2015). Review the Cancer Genome Atlas (TCGA): an Immeasurable Source of Knowledge. *wo 1A* (1a), 68–77. doi:10.5114/wo.2014.47136
- Tovar Sepulveda, V. A., and Falzon, M. (2002). Parathyroid Hormone-Related Protein Enhances PC-3 Prostate Cancer Cell Growth via Both Autocrine/paracrine and Intracrine Pathways. *Regul. Peptides* 105 (2), 109–120. doi:10.1016/s0167-0115(02)00007-1
- Vincenti, M. P., and Brinckerhoff, C. E. (2002). Transcriptional Regulation of Collagenase (MMP-1, MMP-13) Genes in Arthritis: Integration of Complex Signaling Pathways for the Recruitment of Gene-specific Transcription Factors. *Arthritis Res. Ther.* 4 (3), 157–164. doi:10.1186/ar401
- Voorzanger-Rousselot, N., Juillet, F., Mareau, E., Zimmermann, J., Kalebic, T., and Garnero, P. (2006). Association of 12 Serum Biochemical Markers of Angiogenesis, Tumour Invasion and Bone Turnover with Bone Metastases from Breast Cancer: a Cross-sectional and Longitudinal Evaluation. *Br. J. Cancer* 95 (4), 506–514. doi:10.1038/sj.bjc.6603285
- Wang, Q. M. (2018). *Clinical Significance of MMP-1 in Breast Cancer and Tumor Cell Biological Characteristics in Vitro with Knockdown of MMP-1 Expression*. Dalian: Dalian Medical University.
- Warde-Farley, D., Donaldson, S. L., Comes, O., Zuberi, K., Badrawi, R., Chao, P., et al. (2010). The GeneMANIA Prediction Server: Biological Network Integration for Gene Prioritization and Predicting Gene Function. *Nucleic Acids Res.* 38, W214–W220. doi:10.1093/nar/gkq537
- Xie, Y. C., and Wang, X. D. (2005). Clinical Significance of Expressions of Collagen IV in Human Breast Carcinoma. *Chongqing Med.* 2005 (08), 1187–1189.
- Yin, W. J., and Xia, X. H. (2013). Clinical Significance of Expression of Matrix Metalloproteinase 13 in Breast Cancer. *International J. Surg.* 40 (09), 611–614+649.
- Yousef, E. M., Tahir, M. R., St-Pierre, Y., and Gaboury, L. A. (2014). MMP-9 Expression Varies According to Molecular Subtypes of Breast Cancer. *Bmc Cancer* 14, 609. doi:10.1186/1471-2407-14-609
- Zajkowska, M., Ławicki, S., Głażewska, E., Będkowska, G., and Szmittowski, M. (2016). Plasma Levels and Diagnostic Utility of VEGF, MMP-9, and TIMP-1 in the Diagnosis of Patients with Breast Cancer. *Ott* 9, 911–919. doi:10.2147/ott.S99959
- Zhang, B., Liu, Y. X., Cao, W. F., Cao, X. C., Ning, L. S., and Hao, X. S. (2008). Relationship between the Expression of Matrix Metalloproteinase-13 Protein and Other Biomarkers, Prognosis in Invasive Breast Cancer. *Zhonghua Bing Li Xue Za Zhi* 37 (07), 471–476.
- Zhang, C., Cheng, W., Ren, X., Wang, Z., Liu, X., Li, G., et al. (2017). Tumor Purity as an Underlying Key Factor in Glioma. *Clin. Cancer Res.* 23 (20), 6279–6291. doi:10.1158/1078-0432.Ccr-16-2598
- Zhang, S., Wang, Y., Gu, Y., Zhu, J., Ci, C., Guo, Z., et al. (2018). Specific Breast Cancer Prognosis-subtype Distinctions Based on DNAmethylation Patterns. *Mol. Oncol.* 12 (7), 1047–1060. doi:10.1002/1878-0261.12309
- Zhang, Y. (2013). *Proteomic and Functional Studies of Key Factors in Breast Cancer Metastasis*. Shanghai: Shanghai Jiao Tong University.
- Zhou, M., Zhang, Z., Bao, S., Hou, P., Yan, C., Su, J., et al. (2021). Computational Recognition of lncRNA Signature of Tumor-Infiltrating B Lymphocytes with Potential Implications in Prognosis and Immunotherapy of Bladder Cancer. *Brief Bioinform* 22 (3). doi:10.1093/bib/bbaa047

Conflict of Interest: The authors declare that the research was conducted in the absence of any commercial or financial relationships that could be construed as a potential conflict of interest.

Publisher's Note: All claims expressed in this article are solely those of the authors and do not necessarily represent those of their affiliated organizations, or those of the publisher, the editors and the reviewers. Any product that may be evaluated in this article, or claim that may be made by its manufacturer, is not guaranteed or endorsed by the publisher.

Copyright © 2022 Cheng, Chen, Chen, Deng and Huang. This is an open-access article distributed under the terms of the Creative Commons Attribution License (CC BY). The use, distribution or reproduction in other forums is permitted, provided the original author(s) and the copyright owner(s) are credited and that the original publication in this journal is cited, in accordance with accepted academic practice. No use, distribution or reproduction is permitted which does not comply with these terms.