



Prevalence and Spectrum of Predisposition Genes With Germline Mutations Among Chinese Patients With Bowel Cancer

Zhengyong Xie[†], Yongli Ke[†], Junyong Chen, Zehang Li, Changzheng Wang, Yuhong Chen, Hongliang Ding and Liyang Cheng*

General Surgery Department, General Hospital of Southern Theatre Command, People's Liberation Army of China (PLA), Guangzhou, China

OPEN ACCESS

Edited by:

Rajkumar S. Kalra,
Okinawa Institute of Science and
Technology Graduate University,
Japan

Reviewed by:

Aijaz Ahmad Naik,
National Institute of Mental Health
(NIH), United States
Manish Kumar Dwivedi,
Indian Institute of Science Education
and Research, Bhopal, India
Devivasha Bordoloi,
Wistar Institute, United States

*Correspondence:

Liyang Cheng
chliyang2021_1@163.com

[†]These authors share first authorship

Specialty section:

This article was submitted to
Human and Medical Genomics,
a section of the journal
Frontiers in Genetics

Received: 09 August 2021

Accepted: 04 October 2021

Published: 27 January 2022

Citation:

Xie Z, Ke Y, Chen J, Li Z, Wang C,
Chen Y, Ding H and Cheng L (2022)
Prevalence and Spectrum of
Predisposition Genes With Germline
Mutations Among Chinese Patients
With Bowel Cancer.
Front. Genet. 12:755629.
doi: 10.3389/fgene.2021.755629

Background: Bowel cancer is the third-most common cancer and the second leading cause of cancer-related death worldwide. Bowel cancer has a substantial hereditary component; however, additional hereditary risk factors involved in bowel cancer pathogenesis have not been systematically defined.

Materials and Methods: A total of 573 patients with bowel cancer were enrolled in the present study, of whom 93.72% had colorectal cancer (CRC). Germline mutations were integrated with somatic mutation information via utilizing target next-generation sequencing.

Results: Pathogenic/Likely Pathogenic (P/LP) germline alterations were identified in 47 (8.2%) patients with bowel cancer and the ratio of the number of these patients with family history was significantly higher in the P/LP group than that noted in the non-pathogenic (Non-P) group. Certain rare germline alterations were noted, such as those noted in the following genes: *FANCD2*, *CDH1*, and *FLCN*. A total of 32 patients (68.1%) had germline alterations in the DNA-damage repair (DDR) genes and homologous recombination (HR) accounted for the highest proportion of this subgroup. By comparing 573 patients with bowel cancer with reference controls (China_MAPs database), significant associations ($p < 0.01$) were observed between the incidence of bowel cancer and the presence of mutations in *APC*, *ATM*, *MLH1*, *FANCD2*, *MSH3*, *MSH6*, *PMS1*, and *RAD51D*. Somatic gene differential analysis revealed a marked difference in 18 genes and a significant difference was also noted in tumor mutation burden (TMB) between germline mutation carriers and non-germline mutation subjects ($p < 0.001$). In addition, TMB in DDR mutation groups indicated a dramatic difference compared with the non-DDR mutation group ($p < 0.01$). However, no statistically significant differences in TMB were noted among detailed DDR pathways for patients with bowel cancer, irrespective of the presence of germline mutations. Moreover, a significantly higher level ($p < 0.0001$) of mutation count was observed in the DDR group from The Cancer Genome Atlas (TCGA) database and the DDR and non-DDR alteration groups displayed various immune profiles.

Conclusion: Chinese patients with bowel cancer exhibited a distinct spectrum of germline variants, with distinct molecular characteristics such as TMB and DDR. Furthermore, the information on somatic mutations obtained from TCGA database indicated that a deeper

understanding of the interactions among DDR and immune cells would be useful to further investigate the role of DDR in bowel cancer.

Keywords: bowel cancer, germline, somatic, P/LP (pathogenic/likely-pathogenic), TMB, DDR

INTRODUCTION

Bowel cancer ranks third with regard to cancer morbidity and mortality worldwide (Thanikachalam and Khan, 2019). According to the Chinese Cancer Registration Report of 2018, 387,600 bowel cancer new cases and 187,100 bowel cancer-related deaths occurred in China during 2015, ranking it the fourth (9.87%) and fifth (8.01%) highest incidence and mortality rates, respectively, among all cancers (Arnold et al., 2020; Yang et al., 2020). In addition, the rates of bowel cancer steadily increased from 2000 to 2018 (Bhui et al., 2009; Bray et al., 2018). Although lower rates compared with the world average (incidence rate of 17.81/100,000 persons and mortality rate of 8.12/100,000 persons) (Bray et al., 2018), the number of new bowel cancer cases and bowel cancer-related deaths in China is the highest in the world due to its relatively large population. Genetic factors resulting in the early development of cancers account for a substantial number of bowel cancer (Medina Pabón and Babiker, 2021). Therefore, it is necessary to explore the prevalence of hereditary bowel cancer and the contribution of the pathogenic germline variants in the development of this disease in the Chinese population.

In general, hereditary cancer syndromes have been implicated in 3–5% of overall cases with bowel cancer (Medina Pabón and Babiker, 2021). Individuals who harbor germline mutations in specific genes are at high risk for developing bowel cancer. Clinically, individuals with hereditary bowel cancer syndromes may be alert to this situation and more likely to undertake frequent early screening (Sokic-Milutinovic and eng, 2019). It is known that germline mismatch repair (MMR) gene mutations, together with *APC* gene mutations, contribute significantly to inherited bowel cancer (Sa et al., 2020). Lynch Syndrome, the most common hereditary cancer syndrome associated with predisposition to bowel cancer, is associated with germline mutations in DNA mismatch repair (MMR) genes such as *MLH1*, *MSH2*, *MSH6*, *PMS2*, and *EPCAM* (Engel et al., 2020). Familial adenomatous polyposis (FAP) is associated with germline mutations in the *APC* tumor suppressor gene and has been implicated in 1% of cases with bowel cancer. Germline mutations in additional high and moderate penetrance cancer genes such as *BRCA1*, *CDH1*, and *MUTYH*, have also been associated with increased risk for the developing colorectal neoplasia (Ma et al., 2018). Recent studies have demonstrated that germline variants in various cancer predisposition genes have been identified in 1 out of 10 adults and children diagnosed with advanced cancer types, as well as those with colorectal (Mueller et al., 2021), pancreatic (Gentiluomo et al., 2020), and metastatic prostate (Giri et al., 2019) cancers. The impact of an individual germline variant for clinical decision-

making depends on the specific characteristics of the variant (Bertelsen et al., 2019), which classify whether the variant is pathogenic/likely pathogenic (P/LP), or whether it is known and/or it is likely to affect the function of its gene.

Accurate interpretation of genetic test results is of vital importance, notably for patients who are identified with one or more P/LP germline variant associated with a hereditary cancer syndrome. Due to the development of next-generation sequencing (NGS) technology, it has been found that various ratio of patients with bowel cancer harbor germline mutations (Bien et al., 2019). However, despite germline variants in genes related to cancer susceptibility being more common than initially expected, identification of germline mutations of Chinese patients with bowel cancer and the correlation between germline mutations and somatic mutations has not been studied in detail. The present study sought to determine the characteristics of P/LP germline variants in Chinese patients with bowel cancer. The results revealed that a wider panel of predisposition genes are recommended for Chinese patients with bowel cancer, which will be helpful to aid the establishment of prevention and surveillance strategies that can be used to reduce the incidence of this disease.

MATERIALS AND METHODS

Samples Source and Ethic Data

Patients with bowel cancer gave written informed consent prior to their participation in General Hospital of Southern Theatre Command, PLA. Formalin-fixed, paraffin-embedded (FFPE) tumor tissues and matched blood samples in EDTA tubes (for germline tests) from 573 diagnosed bowel cancer patients (Information on clinicopathological status of patients is provided in **Supplementary Table S2**) were collected. All tumor FFPE sections were evaluated by pathologist to contain at least 20% tumor cells. Family history here is defined as the confirmed bowel cancer patient who has at least one family member (first and second-degree relatives) who had a history of tumor diagnosis. The immediate family member includes father, mother, brother(s), sister(s), son(s), daughter(s); second degree relatives include grandparent(s), uncle(s), aunt(s).

Deoxy Ribonucleic Acid Isolation and Targeted Next-Generation Sequencing

The FFPE tissues and peripheral white blood cells were collected to extract DNA using QIAamp DNA FFPE Tissue Kit and DNeasy Blood and Tissue Kit (Qiagen, Inc.),

respectively. And the purified gDNA was quantified using the Qubit 3.0 Fluorometer (Life Technologies, Inc.).

For the matched germline and tumor samples, 100 ng of DNA was shared with a Covaris E210 system (Covaris, Inc.) to obtain an average of 200 bp fragments. Accel-NGS 2S DNA Library Kit (Swift Biosciences, Inc.) and xGen Lockdown Probes kit (IDT, Inc.) were used for NGS library preparation of the tumor gDNA matched germline gDNA. The custom xGen Lockdown probe was synthesized by IDT, Inc. to target the exons and selected intronic regions of 499 genes (Gene list is provided in **Supplementary Table S1**).

Interpretation of Pathogenicity of Germline Mutations and Calculation of Somatic Tumor Mutation Burden

Pathogenicity of germline mutations was defined and predicted based on the five-grade classification system according to the American College of Medical Genetics and Genomics (ACMG) Guidelines for the Interpretation of Sequence (Li et al., 2017). It was modified here that pathogenic/likely-pathogenic germline variants were depicted as P/LP and the variant of undetermined significance (VUS), benign, likely benign, and somatic mutations were defined as the non-pathogenic group (Non-P) in our results. Therefore, all mutations were categorized into P/LP or Non-P groups in this study.

Tumor mutation burden of each sample was calculated according to a published and the method of Chalmers et al (2017).

Data Processing

Germline mutation data and incidence rates were obtained from the ChinaMAP database (<http://www.GenomAD.org>). The Cancer Genome Atlas (TCGA) database (<https://tcga-data.nci.nih.gov/tcga/>) provides several expression profiles and mutation data of CRC, as well as corresponding clinical data. Gene Ontology (GO) and the Kyoto Encyclopedia of Genes and Genomes (KEGG) pathway terms were considered statistically significant when $FDR < 0.01$. CIBERSORT was used for evaluating diverse immune cell types in the cancer microenvironment. The violin software package was used to visualize differentially infiltrated immune cells between the two groups through the Wilcoxon test.

Statistical Analysis

Statistical analyses were performed using the Statistical Package for the Social Sciences (SPSS) statistical package and Graphpad (Prism 8). Student's t-test was performed when two groups were compared, and ANOVA and post hoc tests were performed when three or more groups were compared. Gene prevalence between different groups was analyzed by Chi-Square test or Fisher exact test under/with a dominant model. A two-sided p value of less than 0.05 was considered to be statistically significant.

TABLE 1 | Description of cohort.

Characteristic	Subgroups	Total evaluable cohort, no. (%)	
No. of participants		573	
Age, year	<50	124	21.64%
	≥50	449	78.36%
Sex	female	227	39.62%
	male	346	60.38%
Family history	Yes*	121	21.11%
	First-degree	108	18.85%
	Second-degree	13	2.27%
	No	275	48%
	NA	177	30.89%
Stage	I	7	1.22%
	II	202	35.25%
	III	63	10.99%
	IV	301	52.53%
Tumor Location	Colon cancer	380	66.32%
	Rectal cancer	157	27.40%
	Duodenal Cancer	27	4.71%
	Small bowel cancer	6	1.05%
	Cecal cancer	3	0.52%

Yes*: the confirmed colorectal cancer patient has at least one family member (first- and second-degree relatives) who had a history of tumor diagnosis.

RESULTS

Demographic Characteristics and Landscape of Mutational Profiles in Chinese Patients With Bowel Cancer

Briefly, paired tumor/germline analysis was conducted using a customized next generation sequencing (NGS) panel of 499 selected genes (**Supplementary Table S1**). Somatic variants were determined by comparing the data between tumor and blood samples and all participants were included as a result of successful germline sequencing, which resulted in an evaluable population of 573 patients with bowel cancer. The demographic, clinical, and pathological characteristics of this patient cohort are shown in **Table 1**. In this cohort ($n = 573$), 21.64% ($n = 124$) participants who were diagnosed with bowel cancers were < 50 years old and 78.36% ($n = 449$) > 50 years old. Approximately 39.62% ($n = 227$) patients were female, 66.32% ($n = 380$) exhibited colon cancer, 27.4% ($n = 157$) owned rectal cancer, and 52.53% ($n = 301$) patients were reported to have the stage IV tumors. A total of 108 (18.85%) participants had one or more first-degree relatives with a history of tumor diagnosis, and 13 (2.27%) had one or more second-degree relatives with a history of tumor diagnosis.

Characteristics of Pathogenic Germline Mutations in the Chinese Cohort and Their Impact on Bowel Cancer Risk

Overall, 47 patients were found to carry P/LP germline mutations (**Table 2**). The age and sex of the patients were not associated with the presence or absence of a P/PL germline mutation ($p = 0.19$

TABLE 2 | The summary of clinicopathological and history information for bowel cancer patients with or without distinct germline mutation pathogenicity.

Characteristic	Subgroups	P/LP (N = 47)		Non-pathogenic (N = 526)		p Value
Age, year	<50	14	29.79%	110	20.91%	0.194
	≥50	33	70.21%	416	79.09%	—
Sex	female	23	48.93%	204	38.78%	0.213
	male	24	51.07%	322	61.22%	—
Family history	Yes*	14	29.79%	107	20.34%	0.037
	First-degree	12	25.53%	96	18.25%	—
	Second-degree	2	4.26%	11	2.09%	—
	No	15	31.91%	260	49.43%	—
	NA	18	38.30%	159	30.23%	—

Yes*: the confirmed colorectal cancer patient has at least one family member (first and second degree relatives) who had a history of tumor diagnosis.

and $p = 0.21$, respectively, **Table 2**). Interestingly, the ratio of patients with bowel cancer with at least one family member (first- and second-degree relatives) with family history of cancer(s), such as colon, breast, endometrium, ovary, and/or pancreas was significantly higher in the P/LP group than that of the Non-P group ($p = 0.037$, **Table 2**).

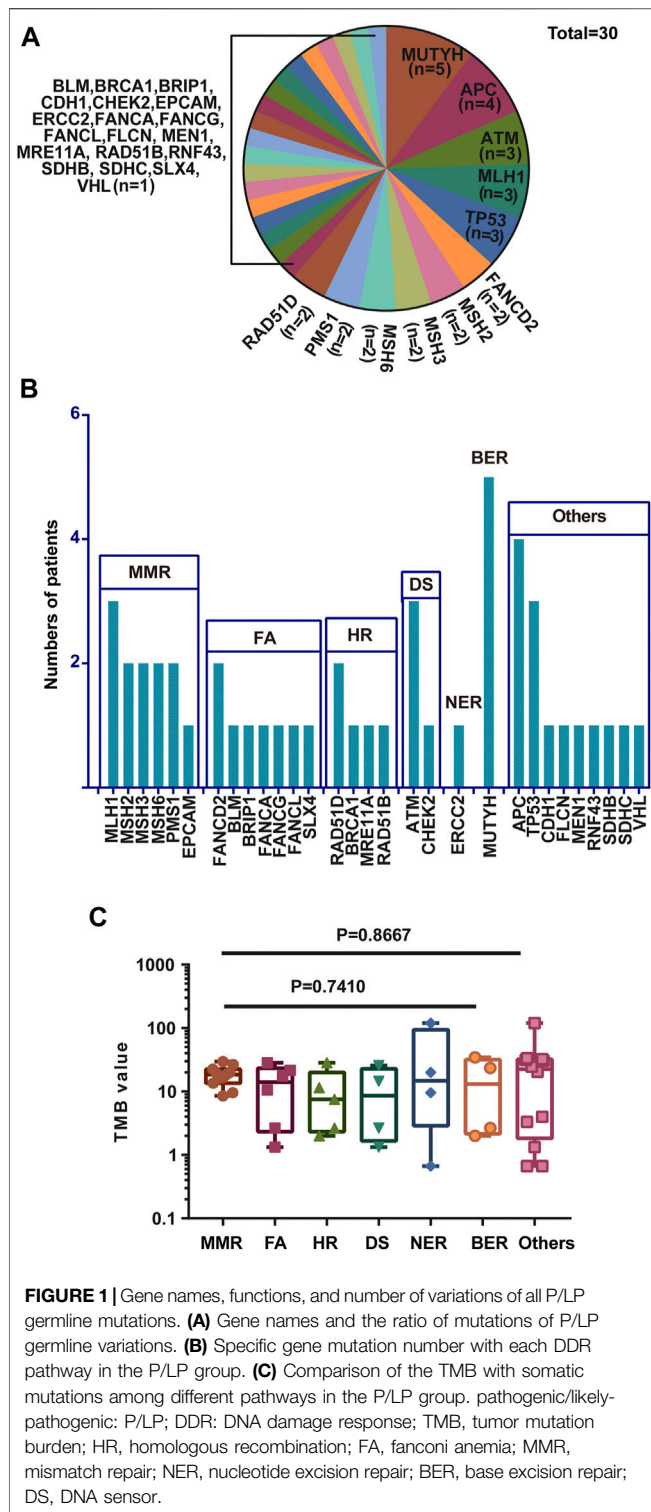
A total of 30 genes with P/PL germline variants were detected among 47 patients (**Figure 1A**). Besides, this study identified 5 out of 47 patients who carried *MUTYH* P/LP mutations (5/47), followed by *APC* (4/47) *MLH1* (3/47), *TP53*(3/47), and *ATM* (3/47) (**Supplementary Table S2**, **Figure 2A**). Moreover, it was found that 8 patients carried LS related mutations (3 *MLH1*, 2 *MSH2*, 2 *MSH6*, and 1 *EPCAM*) and 39 carried non-LS mutations (**Figure 1A**). These findings were consistent with those reported in the previous studies (Latham et al., 2019). Notably, certain novel P/LP mutations were present, including those in *FANCD2*, *RAD51D*, *BLM*, *CDH1*, *FLCN*, *MEN1*, *SDHB*, and *SLX4* were newly discovered in our cohort and have been rarely reported in the previous publications. The detailed distribution data and information on the germline mutations are presented in **Supplementary Table S2**. The functions of these genes with newly discovered P/LP mutations were mainly involved in DNA damage repair pathways (DDR-related genes were shown in **Supplementary Table S3**) and exerted a very broad impact. They included the following components: i) Those contributing to homologous recombination (HR), such as *BRCA1*, *RAD51D*, *MRE11A*, and *RAD51B*; ii) Those involved in Fanconi anemia (FA), such as *FANCG*, *FANCA*, *SLX4*, *BLM*, *FANCD2*, *FANCL*, and *BRIP1*; iii) Those involved in base excision repair (BER), such as *MUTYH*; iv) those involved in nucleotide excision repair (NER), such as *ERCC2*; v) those involved in mismatch repair (MMR), such as *MLH1*, *MSH2*, *MSH3*, *MSH6*, *PMS1*, and *EPCAM*; vi) those contributing to DNA sensor (DS), such as *ATM* and *CHEK2* (**Figure 1B**).

Mutations in the DNA damage repair genes increase the risk of subsequent mutations and therefore confer high cancer susceptibility. Previous studies verified the association between alterations in 34 DDR genes that exhibited higher TMB levels in urothelial cancer and demonstrated that DDR inactivation was associated with higher levels of TMB (Wang et al., 2018). Therefore, the

TMB of CRC patients harboring germline mutations was compared among different DDR subgroups. Although there were no statistically significant differences with regard to the incidence of TMB in these pathways, the average value of MMR was the highest with the exception of the group of others, while HR exhibited the lowest (**Figure 1C**). This phenomenon is in line with the previous studies showing that over 90% of MMR-deficient tumors exhibit high TMB levels (Stadler et al., 2016). In addition, the data indicated that the majority of germline mutations were located in or affecting protein functional domains and that they may have a significant impact on protein function (**Supplementary Figure S1**).

To investigate the risk of bowel cancer in individuals carrying P/LP germline mutations, the mutation prevalence of all germline mutations was searched in the total population and in different populations derived from the China_MAPs database (**Table 3**). Eight genes were significantly associated with CRC compared with control subjects derived from the China_MAPs database. These included the following: i) *APC*, with mutations in 0.70% of cases and in 0.01% of control subjects (OR, 74.32); ii) *ATM*, with mutations in 0.52% of cases and in 0.03% of control subjects (OR, 18.56); iii) *MLH1*, with mutations in 0.52% of cases and in 0.01% of control subjects (OR, 111.50); iv) *FANCD2*, with mutations in 0.35% of cases and in 0.03% of control subjects (OR, 12.35); v) *MSH3*, with mutations in 0.35% of cases and in 0.04% of control subjects (OR, 9.27); vi) *MSH6*, with mutations in 0.35% of cases and in 0.01% of control subjects (OR, 74.07); vii) *PMS1*, with mutations in 0.35% of cases and in 0.30% of control subjects (OR, 10.59); viii) *RAD51D*, with mutations in 0.35% of cases and in 0.01% of control subjects (OR, 74.07) (**Table 3**). These findings suggested that these P/LP germline mutations were risk factors for the development of bowel cancer.

Furthermore, the bowel cancer germline mutation frequency found in the present study was compared with that reported in other studies including the investigations performed in Japan (Fujita et al., 2020) and in America (Yurgelun et al., 2017). For the incidence of *APC* and *MUTYH* in the Japanese cohort were significantly lower than those noted in the present ($p = 0.02$, $p < 0.001$ respectively). The P/PL prevalence did not differ significantly of genes including *MLH1*, *MSH2*, *MSH6*, *BRCA1*, *TP53*, *CHEK2*, *ATM*, and *BRIP1* among the three cohorts investigated. (**Table 4**).



Molecular Analysis of Somatic Mutations of Patients With Bowel Cancer Carrying Germline P/LP Mutations

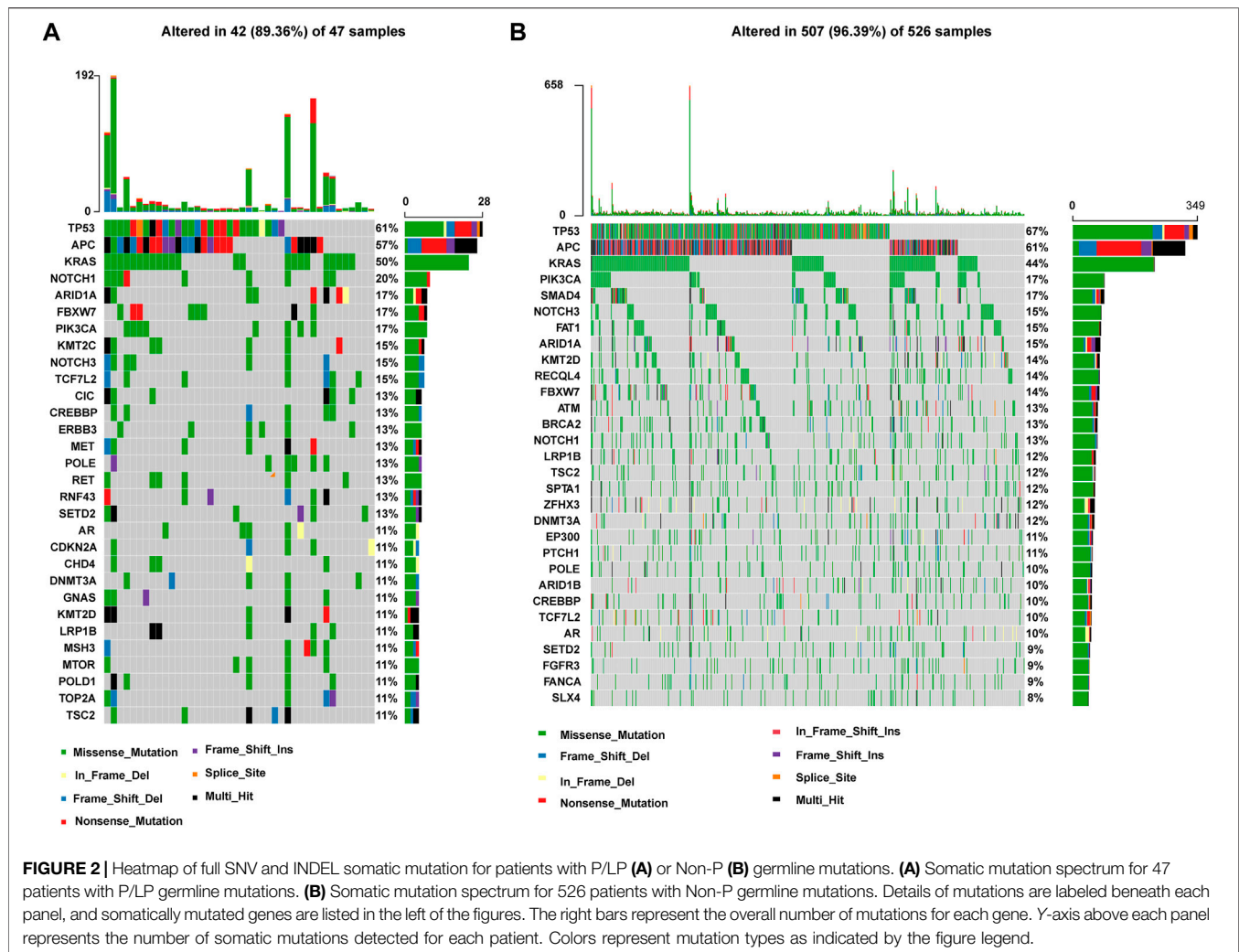
The relationship between germline mutation carriers and patients with somatic mutations has been studied in other cancer types,

such as lung cancer (Liu et al., 2020). However, the connection of germline variations and somatic mutations in bowel cancer has not been explored in detail. The somatic mutation spectrum was classified by pathogenicity/likely pathogenicity of germline mutations for all patients with bowel cancer (P/LP and Non-P groups) (Figures 2A,B). *TP53*, *APC*, *KRAS*, *NOTCH1*, *ARID1A*, *FBXW7*, *PIK3CA*, *KMT2C*, *NOTCH3*, and *TCF7L2*, were found to be the top 10 mutated genes in the P/LP group. With regard to the Non-P group, the top 10 mutated genes were *TP53*, *APC*, *PIK3CA*, *SMAD4*, *NOTCH3*, *FAT1*, *ARID1A*, *KMT2D*, *RECQL4*, and *FBXW7*. According to the different mutation classification categories, the missense mutation was the one that obtained the highest proportion in the bowel cancer samples in the presence or absence of germline variants.

To determine the presence of germline variants in the patients examined, the comparison of somatic alterations was conducted between P/LP and Non-P groups, and the results revealed dramatic differences ($p < 0.001$) in several gene mutations between these two groups (Figure 3A). A total of 17 gene mutations such as *TCF7L2*, *KMT2D*, *PRKDC*, *NOTCH1*, *KMT2C*, *ERBB3*, and *TSC2*, and others were more common in patients with bowel cancer with P/LP germline mutations; strikingly, *SMAD4* exhibited the opposite prevalence and its mutation frequency in the Non-P group was significantly higher than that in the P/LP group (Figure 3A). Subsequently, Gene Ontology (GO) and Kyoto Encyclopedia of Genes and Genomes (KEGG) enrichment analyses were further conducted to explore the biological roles of the identified differential genes. GO as well as KEGG enrichment analysis revealed that these genes were mainly enriched in the biological process (BP) terms, such as PI3K signaling, DNA recombination, HR, and MMR (Supplementary Figure S2). Furthermore, the identification of specific driver genes in the present study has been previously reported (Eklöf et al., 2013; Dow et al., 2015). The mutation rate (frequency) of *APC* was the highest among all genes both in the P/LP and non-P groups followed by the mutation rate of *TP53*, *KRAS*, *PIK3CA*, *SMAD4* and *BRAF* (Figure 3B).

Association Between Tumor Mutation Burden and the Incidence of DNA-Damage Repair Mutations in the Chinese Cohort

TMB is considered a vital biomarker in a variety of cancer types (Samstein et al., 2019; Wu et al., 2019), which may reflect the degree of genomic instability at the nucleotide level. Therefore, the TMB was initially compared in the P/LP and Non-P groups and the data indicated a significantly higher level of TMB in the P/LP group (14.56 vs. 6.39 mutations/Mb, $p = 0.0056$, Figure 4). Furthermore, the DDR system plays an important role in maintaining genome stability, based on this notion, a focused analysis was performed, specifically on the DDR-altered genes in all bowel cancer cases. In the P/LP group, DDR alterations were present in 68.1% ($n = 32$) of cases and were involved in the DDR pathways including HR (31.36%), DS (20.82%), FA (19.28%), MMR (12.85%), BER (9%) and NER (6.68%), respectively (Figure 5A). In the Non-P group, DDR gene mutations occurred in 30% ($n = 157$) of cases, including HR (26.97%),



MMR (20.22%), FA (20.22%), BER (13.48%), DS (11.24%) and NER (7.67%) (Figure 5B). In the P/LP group, *FANCA*, *ATM*, and *MUTYH* were the most commonly altered DDR genes, followed by *BRCA2*, *MSH3*, and *POLE*; whereas in the Non-P group, *BRCA2* exhibited the highest DDR gene alterations, followed by *ATM*, *POLE*, and *MSH6* (Figure 5C). Furthermore, the highest average TMB value was observed in DDR-altered Non-P cases with bowel cancer compared with that of DDR-altered P/LP cases of bowel cancer or Non-DDR altered cases ($p < 0.001$, Figure 5D). The data demonstrated that tumors with DDR mutations in the Non-P group exhibited increased genomic instability than that of the P/LP group. The lowest average TMB appeared in the non-DDR group, which is in line with the evidence reported in the previous studies.

Comparison of Somatic Mutations Between the Chinese Cohort and the Independent The Cancer Genome Atlas Cohort

A total of 223 bowel cancer samples with somatic mutation profiles were downloaded from the TCGA database. The

relevant clinical information was listed in **Supplementary Table S4**. DDR gene mutation analysis was also conducted in the TCGA cohort, and the FA pathway accounted for the highest proportion (25.22%), while NER accounted for the lowest proportion (7.42%) (Figure 6A). Moreover, a similar finding was obtained regarding specific gene mutations in these pathways between TCGA cohort and the Chinese cohort, such as *ATM* (the highest mutation frequency) and *EPCAM* (relative lower mutation frequency) (Figure 6B).

Subsequently, the TMB in the Chinese cohort was compared with the mutation count in the TCGA cohort (TMB was not accessible and therefore the mutation count was adopted here). The selection of mutation genes with P/LP was performed *via* the cBioportal website. In concordance with the previous results, a significantly higher level of TMB was observed in bowel cancer harboring DDR somatic mutations compared with cases with non-DDR bowel cancer in TCGA cohort ($p < 0.0001$, Figure 7). A similar finding was obtained from the Chinese cohort (Figure 5D). Especially, although there was no statistically significant difference among the DDR pathways examined in the TCGA and the Chinese cohort, the lowest TMB or mutation

TABLE 3 | Comparison of mutation carriers by panel gene between colorectal cancer cases and China_MAPs control cases.

Genes	Cases			China_MAPs Cases			Cancer Risk	
	Cases With Mutations, No	Individuals Tested, No	Carrier Frequency, %	Controls With Mutations, No	Individuals Tested, No	Carrier Frequency, %	Odds Ratio(95%CI)	p Value
Genes Significantly Associated with Colorectal Cancer								
<i>APC</i>	4	573	0.70	2	21,176	0.01	74.32 (10.63–833.35)	<0.001
<i>ATM</i>	3	573	0.52	6	21,176	0.03	18.56 (3.00–87.19)	0.001
<i>MLH1</i>	3	573	0.52	1	21,176	0.01	111.50 (8.92–5,589.64)	<0.001
	2	573	0.35	6	21,176	0.03	12.35 (1.22–69.42)	0.02
<i>FANCD2</i>								
<i>MSH3</i>	2	573	0.35	8	21,176	0.04	9.27 (0.96–46.56)	0.03
<i>MSH6</i>	2	573	0.354	1	21,176	0.01	74.07 (3.85–4,220.60)	0.002
<i>PMS1</i>	2	573	0.35	7	21,176	0.03	10.59 (1.07–55.73)	0.02
	2	573	0.35	1	21,176	0.01	74.07 (3.85–4,220.60)	0.002
<i>RAD51D</i>								
Genes Not Significantly Associated with Colorectal Cancer								
<i>BLM</i>	1	573	0.17	11	21,176	0.05	4.62(0.10–34.60)	3.36
<i>BRCA1</i>	1	573	0.17	8	21,176	0.04	5.29 (0.12–41.26)	4.62
<i>BRIP1</i>	1	573	0.17	7	21,176	0.03	12.33 (0.23–153.20)	5.29
<i>CHEK2</i>	1	573	0.17	3	21,176	0.01	18.50 (0.31–354.76)	12.33
<i>EPCAM</i>	1	573	0.17	2	21,176	0.01	6.17 (0.13–50.98)	18.50
<i>ERCC2</i>	1	573	0.17	6	21,176	0.03	5.29 (0.12–41.26)	6.17
<i>FANCA</i>	1	573	0.17	7	21,176	0.03	9.25 (0.19–93.72)	5.29
<i>FANCL</i>	1	573	0.17	4	21,176	0.02	36.98 (0.47–2,826.49)	9.25
<i>SLX4</i>	1	573	0.17	9	21,176	0.01	4.11 (0.09–29.76)	36.98
<i>VHL</i>	1	573	0.17	3	21,176	0.04	12.33 (0.23–153.20)	4.11
<i>MEN1</i>	1	573	0.17	1	21,176	0.01	4.62(0.10–34.60)	12.33

TABLE 4 | Comparison of germline mutation carriers with specific genes among different countries.

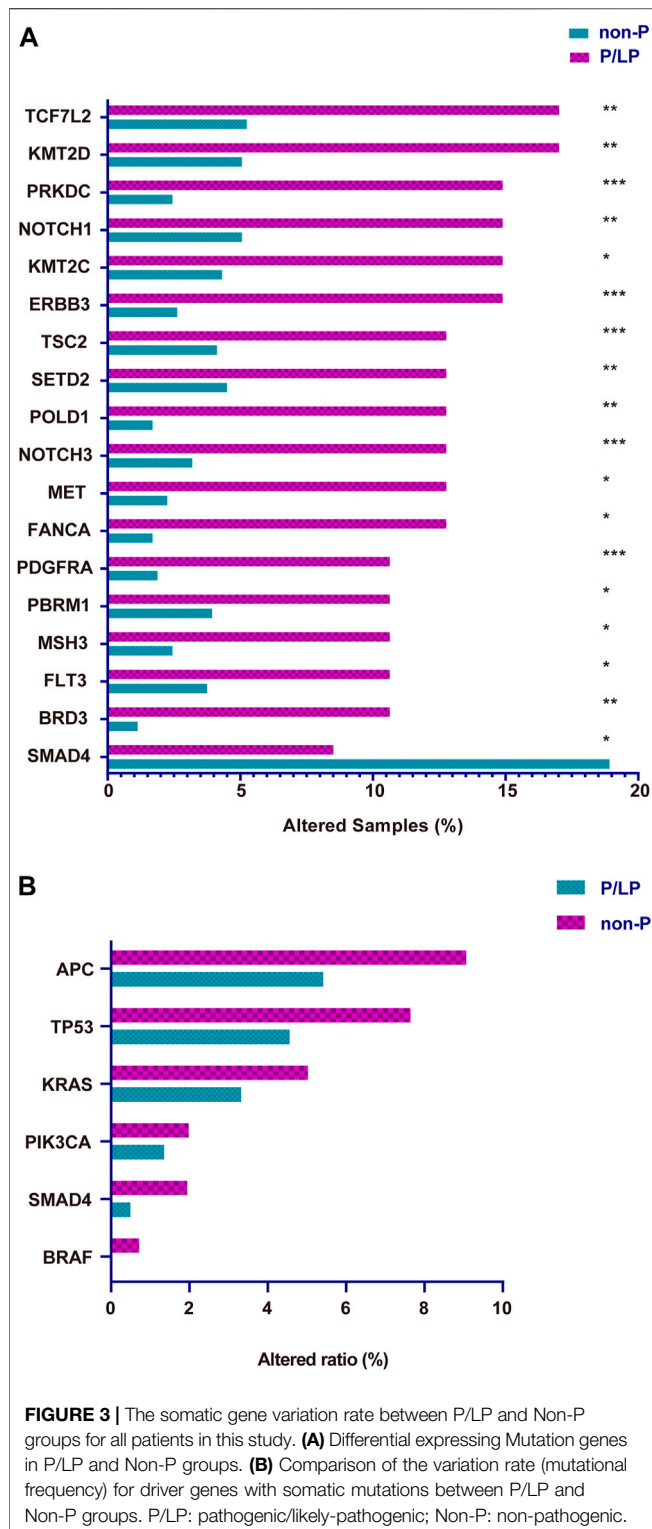
Genes	China		Japan			America		China vs. America p Value
	Individuals Tested, No	Carrier Frequency, %	Individuals Tested, No	Carrier Frequency, %	China vs. Japan p Value	Individuals Tested, No	Carrier Frequency, %	
<i>APC</i>	573	0.70	12,503	0.16	0.02	1,058	0.47	0.73
<i>MUTYH</i>	573	0.87	12,503	0.10	<0.001	1,058	1.80	0.20
<i>MLH1</i>	573	0.52	12,503	0.28	0.23	1,058	1.18	0.20
<i>MSH2</i>	573	0.35	12,503	0.29	0.68	1,058	0.66	0.51
<i>MSH6</i>	573	0.35	12,503	0.31	0.70	1,058	0.57	0.72
<i>BRCA1</i>	573	0.17	12,503	0.17	1.00	1,058	0.28	1.00
<i>TP53</i>	573	0.52	12,503	0.15	0.07	1,058	0.09	0.13
<i>CHEK2</i>	573	0.17	12,503	0.12	0.51	1,058	0.19	1.00
<i>ATM</i>	573	0.52	12,503	0.37	0.47	1,058	0.95	0.56
<i>BRIP1</i>	573	0.17	12,503	0.14	0.57	1,058	0.28	1.00

count was observed in NER pathway. In addition, the HR pathway displayed an increased mutation count in the TCGA cohort, while the Chinese cohort harbored the highest TMB of somatic mutations in BER pathway (Supplementary Figure S3).

Association Between DNA-Damage Repair Mutation and Immune Cell Infiltration Pattern in The Cancer Genome Atlas Cohort

Previous study has demonstrated that mutations can generate novel peptide sequences, which may affect the immune response

(Chalmers et al., 2017). The TMB noted in the DDR mutation group was higher in the Chinese cohort and the TCGA cohort (Figure 5D, Figure 7). Thus, higher immune cell abundance was expected in the DDR somatic mutation. By applying the CIBERSORT algorithm, the differential variation of immune cell infiltration was estimated in the DDR and non-DDR groups of bowel cancer. The Wilcoxon rank-sum test indicated that the proportion of B cell naive ($p = 0.017$), T cell follicular helper ($p = 0.0069$), Macrophage M1 ($p = 0.0038$), and Neutrophils ($p = 0.0163$) were significantly elevated in the DDR group. By contrast, the infiltration levels of T cell



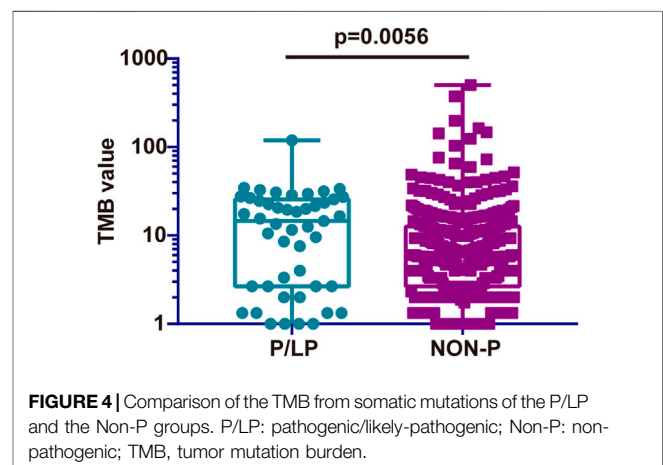
regulatory Tregs ($p = 0.0291$) and Myeloid dendritic cell resting ($p = 0.0163$) were lower in the DDR group (Figure 8A). However, no association was observed between the different DDR pathway alterations and immune cell abundance (Figure 8B).

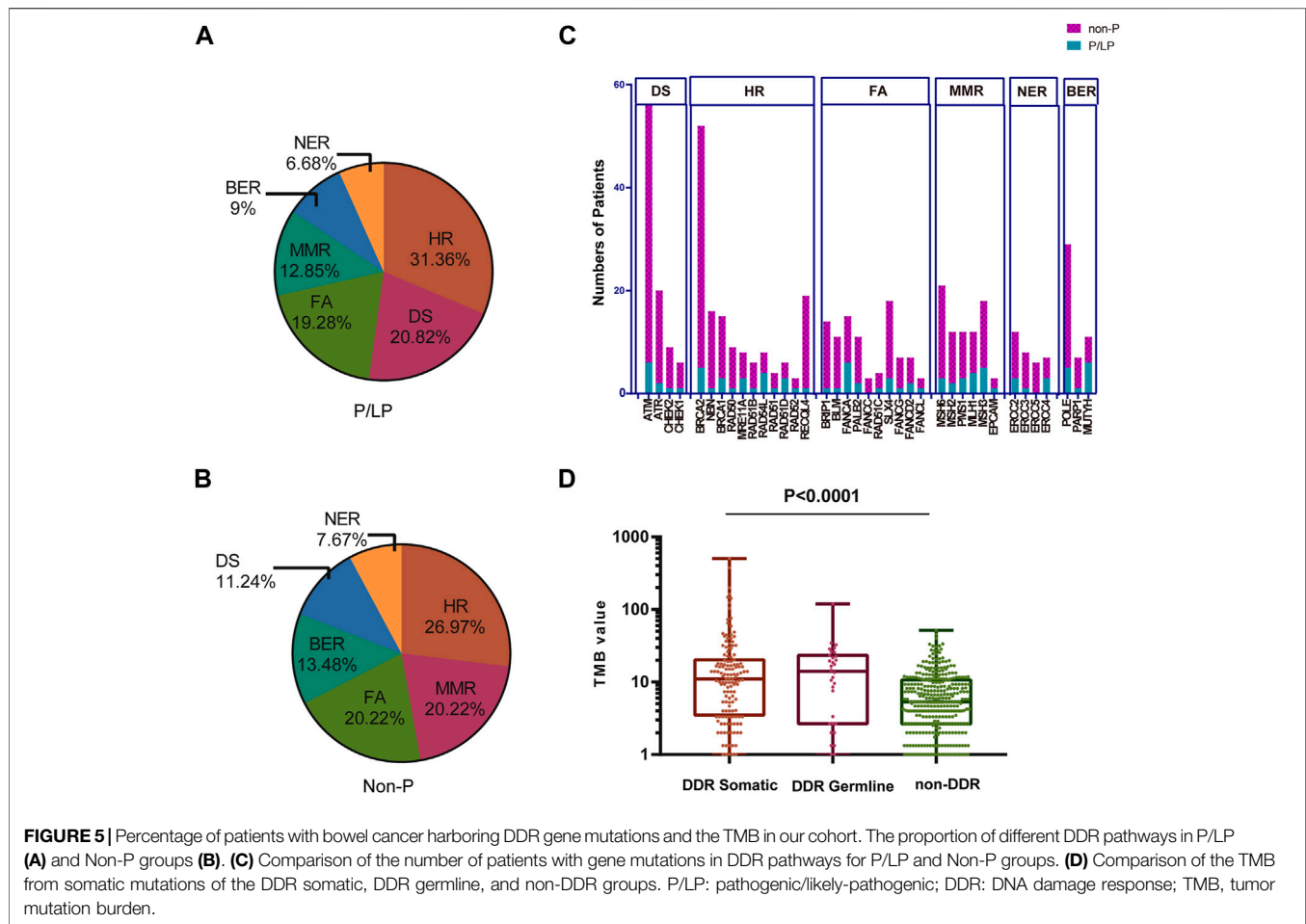
Association Between DNA-Damage Repair Mutations and Survival Outcomes

In addition, the present study further investigated whether the number of somatic mutations in the DDR genes of P/LP group was associated with improved survival following programmed cell death protein 1 (PD-1)/programmed death-ligand 1 (PD-L1) or cytotoxic T-lymphocyte-associated protein 4 immunotherapy in CRC patients. The clinical data of immunogenomic studies were downloaded from the cBioportal website. The overall survival (OS) was defined as the time from initial surgery to the date of death or last contact (censored). As expected, alteration in the mutation status of P/LP DDR conferred superior OS compared with patients without altered DDR gene(s) (HR, 0.3358; 95% CI, 0.1767 to 0.638; $p = 0.0009$) in the immunotherapy cohort (Figure 9A). However, patients with DDR mutations did not obtain a significantly prolonged OS when the MMR pathway was excluded (HR = 0.2998, 95%CI 0.1051 to 0.8556; $p = 0.0549$, Figure 9B).

DISCUSSION

Germline variants transmit genetic information that determines the heritability of complex disorders (McClellan et al., 2010). The presence of individually-rare but collectively common germline variants can explain a fraction of the missing genetic predisposition to bowel cancer. However, the major percentage of bowel cancer heritability is still not fully characterized, especially for the Chinese population. In the present study, an NGS-based analysis of germline mutations was performed for 573 Chinese patients with various stages of bowel cancer. The analysis provided a representative germline mutation landscape. The present study is the first to elucidate a more comprehensive germline mutation profile of Chinese patients with bowel cancer with the aim of identifying the novel candidate genes for hereditary bowel cancer. In addition, genetic testing and identification of germline mutations may have implications for the relatives of patients with bowel cancer because of the associated risks of CRC and other cancer types. In the present





Chinese cohort, the ratio of patients with bowel cancer with at least one family member (first- and second-degree relatives) with tumor history was significantly higher in the P/LP group than that in the Non-P group, indicating that pathogenic cancer-predisposing variants were associated with the incidence of bowel cancer and resulted in familial clustering. On the other hand, the patients with bowel cancer and their family members with a history of other cancers were included in the family history examined in the current study indicating that the presence of pathogenic germline mutations increased the incidence of other cancer types.

Germline pathogenic variants in genes encoding for DNA mismatch repair proteins cause Lynch syndrome, which is considered the most prevalent form of hereditary bowel cancer (Arora et al., 2015). Classic hereditary bowel cancer syndromes, including Lynch syndrome are mainly due to germline mutations in *APC*, *MUTYH*, and the MMR genes (such as *MLH1*, *MSH2*, *MSH6*, and *PMS2*). The data reported in the current study demonstrated that the top three genes with the highest number of germline mutations were *MUTYH* (5/47), *APC* (4/47), and *MLH1* (3/47), which was consistent with the findings of previous publications (Esteban-Jurado et al., 2015; Reilly et al., 2019). Meanwhile, the recent study also revealed the most common mutated genes of *TP53*, *APC*, *KRAS*, *SMAD4*,

PIK3CA etc., besides, the mutation frequencies of *TP53* and *APC* in the left CRC were significantly higher than that of right CRC (Huang et al., 2021). While the germline alterations in certain susceptibility genes were also detected in the bowel cancer samples including *FANCD2*, *CDH1*, *FLCN*, *MEN1*, *SDHB*, and *SLX4*, which have been rarely reported in the Chinese population. As is known, *FANCD2* is the frequently mutated gene in colorectal cancer (Offman et al., 2005). *CDH1* mutations are more predisposed to familial colorectal cancer (Richards et al., 1999). Besides, it was reported that the frameshift mutations in the *FLCN* exon 11 which would suppress the activation of *FLCN* could lead to the increased incidence of colorectal cancer (Nahorski et al., 2010). While *MEN1* was reported that it could be a novel driver causing the dysregulation of Wnt signaling pathway in colorectal cancer (Fennell et al., 2020). *SDHB* is the catalytic core of succinate dehydrogenase (SDH), of which dysfunction would exert an influence on the TGF-beta signaling pathway contributing to the colorectal cancer formation (Wang et al., 2016). Moreover, the mutation of the tumor suppressor gene *SLX4* was recently shown to be associated with the early-onset of CRC in the population of Kazakhstan (Zhunussova et al., 2019). Among these germline variants, mutations in *SLX4*, *FANCD2*, and *FLCN* are associated with FA pathway alteration (provided by RefSeq, NCBI). In other

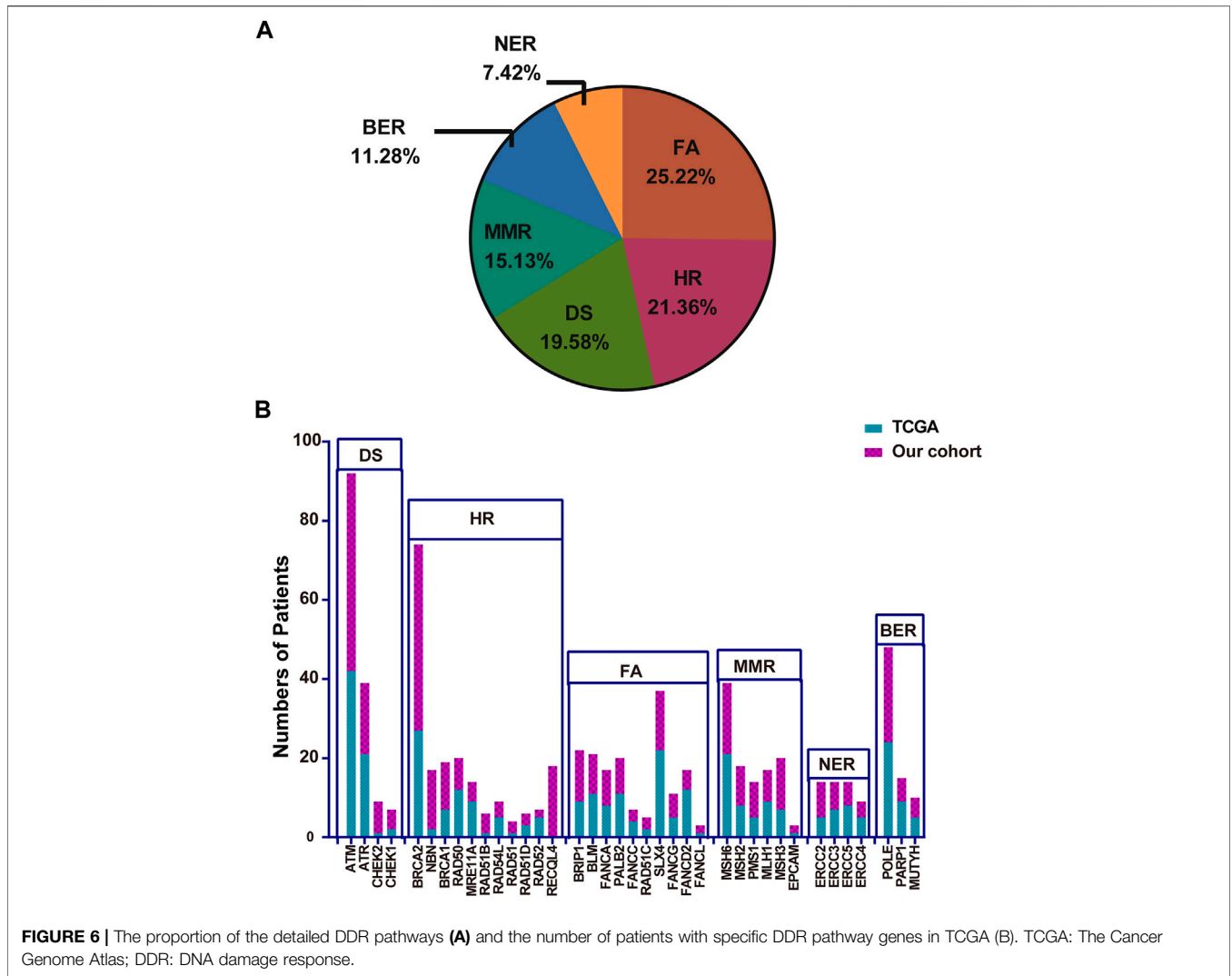


FIGURE 6 | The proportion of the detailed DDR pathways (A) and the number of patients with specific DDR pathway genes in TCGA (B). TCGA: The Cancer Genome Atlas; DDR: DNA damage response.

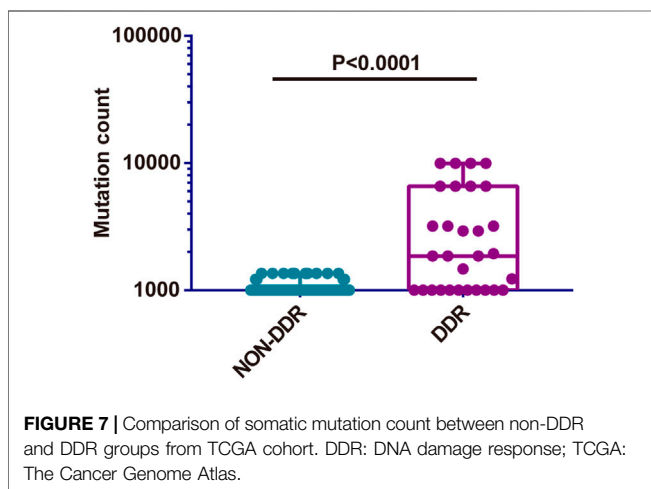
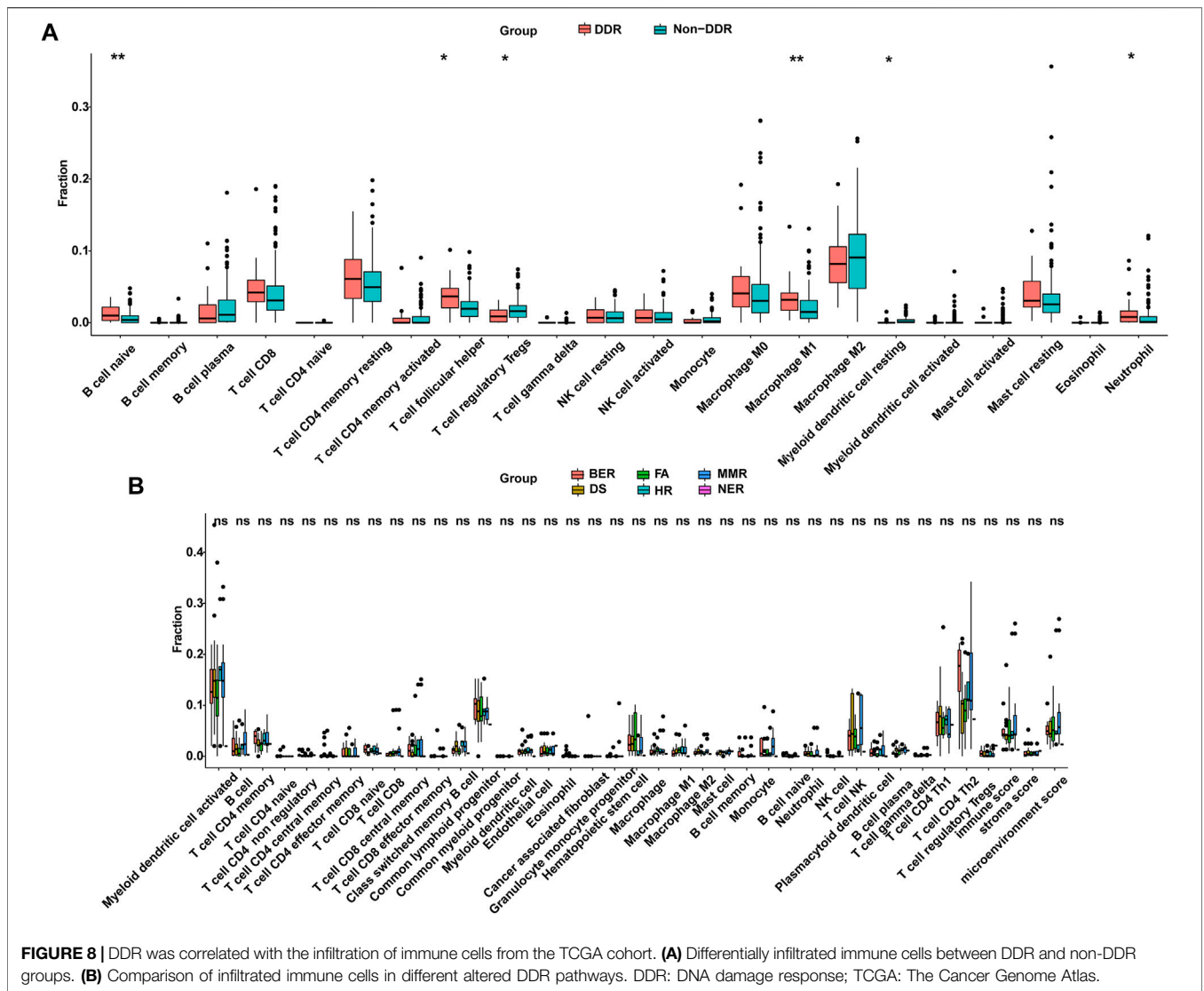


FIGURE 7 | Comparison of somatic mutation count between non-DDR and DDR groups from TCGA cohort. DDR: DNA damage response; TCGA: The Cancer Genome Atlas.

geographical regions, germline mutations of CRC patients mainly occur in the HR, DS, NER, BER, and MMR pathways (Berginc et al., 2009; Yurgelun et al., 2017; Ma et al., 2018; Schneider et al.,

2018; Fujita et al., 2020). Although the present study detected germline mutations in these DDR pathways, a higher number of genes were identified which were involved in the FA pathway compared with the previous studies, such as *FANCD2*, *FANCA*, *FANCG*, *FANCL*, and *SLX4*. The identification of a wider causative mutation in bowel cancer has implications that can apply to genetic counseling practices that are of vital importance for the family under investigation (Wells and Wise, 2017). Once established in a particular family with carriers and non-carriers, prevention strategies can be directed more precisely to those subjects carrying the causative mutation and who are therefore at risk of developing bowel cancer and other related malignancies.

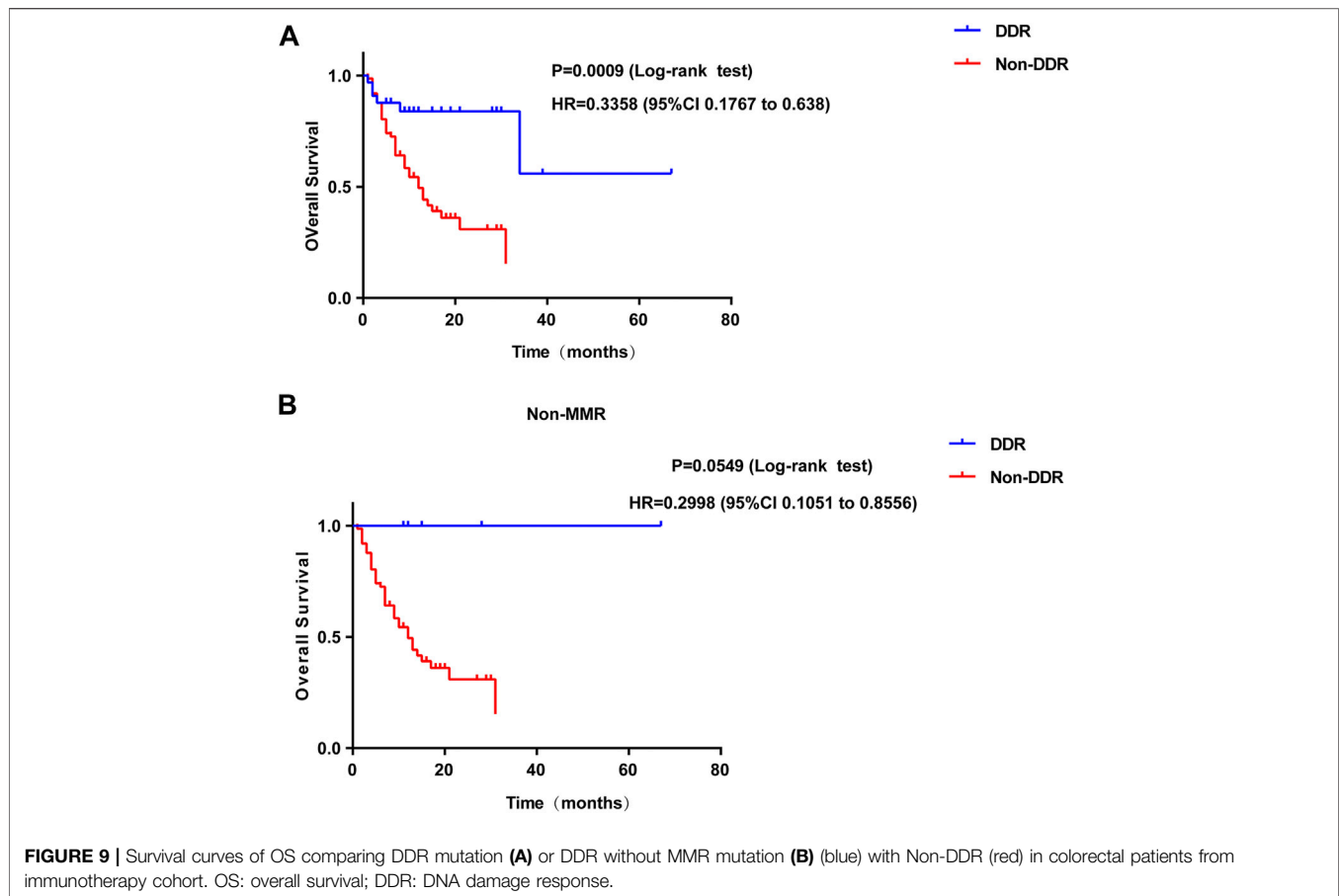
The frequency of mutations queried in the China_MAPS database represents the frequency of a certain mutation site in the general population. The OR of the cases investigated in the present study suggested that the germline mutations were risk factors for bowel cancer. In this case-control study, mutations in 8 genes (*APC*, *ATM*, *MLH1*, *FANCD2*, *MSH3*, *MSH6*, *PMS1*, and *RAD51D*) were found to be associated with bowel cancer and were present in 3.5% of patients with bowel cancer. Mutations in



APC, *ATM*, and *MLH1* were associated with the highest risks of bowel cancer. The frequency of latter two germline variants was also the highest among patients with bowel cancer (0.7, 0.52, and 0.52%, respectively). In addition to commonly mutated genes such as *APC*, *ATM*, and LS-related genes that have been previously reported (Bernstein and Concannon, 2017; Snowsill et al., 2017; Aghabozorgi et al., 2019), the current analysis further revealed significantly higher rates of *FANCD2* and *RAD51D* mutations in bowel cancer germline mutation carriers than those of the general population, suggesting that *FANCD2* and *RAD51D* can be considered as bowel cancer-susceptibility genes. *FANCD2* is monoubiquitinated in response to DNA damage, resulting in its localization to nuclear foci with other proteins (*BRCA1* and *BRCA2*) involved in homology-directed DNA repair. Furthermore, *RAD51D* is involved in the homologous recombination and repair of DNA (provided by RefSeq, NCBI). However, these genes are rarely reported in bowel cancer. Therefore, the current results provide preliminary

evidence of potential susceptibility genes that can be used for hereditary bowel cancer.

The integration of germline and somatic genomic data can provide insight into the mechanisms that drive tumor progression (Ramroop et al., 2019). Therefore, an in-depth integrated analysis was performed on germline and somatic NGS data derived from the patients with bowel cancer. The present study identified several distinct somatic mutation rates between the carriers of germline mutations and the non-carriers. For example, differential expression gene analysis indicated that the mutation incidence of specific genes, such as *TCF7L2*, *KMT2D*, *PRKDC*, and *NOTCH1* was significantly higher in the P/LP group than that of the Non-P group, suggesting a higher risk compared with subjects without germline mutations. It is interesting to note that the *SMAD4* mutation rate in the P/LP group was dramatically lower than that of the Non-P group. Mutations or deletions in this gene have been shown to result in the development of juvenile polyposis syndrome, whereas weak expression of *SMAD4* is known to associate with poor survival in



patients with bowel cancer (Yan et al., 2016). The results in this study confirmed that *SMAD4* mutation mainly occurred in somatic mutation patients rather than germline carriers. One possible explanation for this outcome could be that the environmental factors mainly affected the Non-P germline mutation carriers.

It is noteworthy that somatic mutations in patients with P/LP germline mutations showed distinct characteristics in the present study. TMB, which is considered to be a predictive biomarker of immune checkpoint inhibitor (ICIs) (Wang and Li, 2019), may reflect the degree of genomic instability at the nucleotide level. The TMB in the P/LP group was significantly lower than that in the non-germline mutant group. It was speculated that somatic mutations in patients with P/LP germline mutations may be more focused on certain key genes and key pathways, whereas somatic mutations in patients without P/LP germline mutations may be more sporadic. Therefore, patients with P/LP germline mutations may be more likely to have abnormalities in key genes and pathways, leading to an increased risk of bowel cancer. Moreover, TMB in the non-altered DDR group was significantly lower than that noted in the altered DDR groups. In addition, higher TMB was observed in the DDR of the non-germline mutation group compared with that of the DDR germline mutation group. A possible interpretation is that the

further alteration in DDR may induce a hypermutated phenotype with a higher TMB, which could be established as a biomarker of ICI treatment (Rizvi et al., 2015).

In the current comprehensive analysis, we also explored the association between DDR mutation and the number of immune cells among patients with bowel cancer from the TCGA cohort. The results found that the number of B cell naive, T cell follicular helper, Macrophage M1, and Neutrophil were elevated in the DDR group. Previous studies have demonstrated that the infiltration of B cells plays an important role in tumor immunotherapy (Cabrita et al., 2020; Helmink et al., 2020; Petitprez et al., 2020). Wei, et al. (2016) reported that B cell naive could suppress the antitumor adaptive immune response in the patients with ovarian cancer. An additional study proposed that B cell naive could be considered as a readily available and effective source of antigen-presenting cells in clinical research on tumor immunotherapy (Ren et al., 2014). Based on these findings, it was speculated that DDR alteration in bowel cancer might modulate the response to ICIs to a certain extent (Ren et al., 2014). In addition, the present study indicated that patients with DDR gene alterations were more likely to experience improved OS than patients with unaltered DDR genes. Although MMR mutations were excluded from the DDR pathway, patients with DDR

alterations did not show a significantly prolonged OS, and the p value ($p = 0.0549$) is nearly close to the significance cutoff. The limited samples ($n = 6$) may contribute to this phenomenon. Therefore, it is suggested that the predicted value of this association is investigated further in larger data sets from randomized studies that have led to the FDA approval of several anti-PD-1/PD-L1 agents. DDR alterations may represent a useful predictive bowel cancer biomarker for of the patient response to anti-PD-1/PD-L1 provided these findings are validated in a larger cohort (Samstein and Riaz, 2018; Zhang et al., 2020).

The ratio of DDR pathway alteration and other molecular results varied between the TCGA cohort and the Chinese cohort. The baseline characteristics, such as sex and tumor stage, may also contribute to the distinction.

One limitation of the present study is that the germline mutations were unavailable from TCGA cohort. This cannot comprehensive assessment of the differences between P/LP germline mutation carriers and Non-P germline mutation carriers in distinct bowel cancer populations. In addition, although the mutations were identified in the genomic sequences, their exact effects on the altered protein function were not assessed. Despite these limitations, the results can still provide a reasonable basis for exploring the applications of the DDR germline mutations in the prognosis of hereditary bowel cancer.

In conclusion, the present study identified unique genomic and molecular characteristics such as TMB and DDR between P/LP germline alteration carriers and Non-P bowel cancer patients. A preliminary basis was provided for the assessment of a wider range of susceptibility genes in Chinese CRC patients. Moreover, the TCGA database indicated that a deeper understanding of the interactions between DDR and immune cell infiltration would be useful to further investigate the role of DDR in bowel cancer.

REFERENCES

- Aghabozorgi, A. S., Bahreyni, A., Soleimani, A., Bahrami, A., Khazaei, M., Ferns, G. A., et al. (2019). "Role of Adenomatous Polyposis Coli (APC) Gene Mutations in the Pathogenesis of Colorectal Cancer; Current Status and Perspectives." *Biochimie*, 157, 64–71. doi:10.1016/j.biochi.2018.11.003
- Arnold, M., Abnet, C. C., Neale, R. E., Vignat, J., Giovannucci, E. L., McGlynn, K. A., et al. (2020). Global Burden of 5 Major Types of Gastrointestinal Cancer. *Gastroenterology* 159 (1), 335–349. doi:10.1053/j.gastro.2020.02.068
- Arora, S., Yan, H., Cho, I., Fan, H.-Y., Luo, B., Gai, X., et al. (2015). "Genetic Variants that Predispose to DNA Double-Strand Breaks in Lymphocytes from a Subset of Patients with Familial Colorectal Carcinomas." *Gastroenterol*, 149, 7, 1872–1883. e9. doi:10.1053/j.gastro.2015.08.052
- Berginc, G., Bračko, M., Ravnik-Glavac, M., and Glavac, D. (2009). "Screening for Germline Mutations of MLH1, MSH2, MSH6 and PMS2 Genes in Slovenian Colorectal Cancer Patients: Implications for a Population Specific Detection Strategy of Lynch Syndrome." *Fam. Cancer*, 8, 4, 421–429. doi:10.1007/s10689-009-9258-4
- Bernstein, J. L., and Concannon, P. (2017). ATM, Radiation, and the Risk of Second Primary Breast Cancer. *Int. J. Radiat. Biol.* 93 (10), 1121–1127. doi:10.1080/09553002.2017.1344363

DATA AVAILABILITY STATEMENT

The raw data of next generation sequencing in this study are deposited in: <https://bigd.big.ac.cn/gsa-human/browse/HRA001620> (the Chinese National Genomics Data Center) repository, accession number: HRA001620. The control data from the China Maps database were downloaded from the following: <http://www.GenomAD.org>.

AUTHOR CONTRIBUTIONS

ZX, YK contributed equally to this manuscript. ZX, YK, and LC designed this work; ZX: Data collection and drafting the article, YK: Data analysis and article revision, JC: Data collection and analysis, ZL: Data collection, CW, YC, and HD: Data collection, LC: write the manuscript draft and revise the article. All authors have read and approved the article.

FUNDING

This study was supported by the Special Funding of PLA.

ACKNOWLEDGMENTS

We are grateful of all participants in General Hospital of Southern Theatre Command, PLA.

SUPPLEMENTARY MATERIAL

The Supplementary Material for this article can be found online at: <https://www.frontiersin.org/articles/10.3389/fgene.2021.755629/full#supplementary-material>

- Bertelsen, B., Tuxen, I. V., Yde, C. W., Gabriellaite, M., Torp, M. H., Kinalis, S., et al. (2019). High Frequency of Pathogenic Germline Variants within Homologous Recombination Repair in Patients with Advanced Cancer. *Npj Genom. Med.* 4, 13. doi:10.1038/s41525-019-0087-6
- Bhui, K., Prasad, S., George, J., and Shukla, Y. (2009). Bromelain Inhibits COX-2 Expression by Blocking the Activation of MAPK Regulated NF-Kappa B against Skin Tumor-Initiation Triggering Mitochondrial Death Pathway. *Cancer Letterscancer Lett.* 282 (2), 167–176. doi:10.1016/j.canlet.2009.03.00310.1016/j.canlet.2020.01.017
- Bien, S. A., Su, Y. R., Conti, D. V., Harrison, T. A., Qu, C., Guo, X., et al. (2019). Genetic Variant Predictors of Gene Expression Provide New Insight into Risk of Colorectal Cancer. *Hum. Genet.* 138 (4), 307–326. doi:10.1007/s00439-019-01989-8
- Bray, F., Ferlay, J., Soerjomataram, I., Siegel, R. L., Torre, L. A., and Jemal, A. (2018). Global Cancer Statistics 2018: GLOBOCAN Estimates of Incidence and Mortality Worldwide for 36 Cancers in 185 Countries. *CA A. Cancer J. Clin.*, 68, 6, 394–424. doi:10.3322/caac.21492
- Cabrera, R., Lauss, M., Sanna, A., Donia, M., Skaarup Larsen, M., Mitra, S., et al. (2020). "Tertiary Lymphoid Structures Improve Immunotherapy and Survival in Melanoma." *Nature*, 577, 7791, 561–565. doi:10.1038/s41586-019-1914-8
- Chalmers, Z. R., Connelly, C. F., Fabrizio, D., Gay, L., Ali, S. M., Ennis, R., et al. (2017). Analysis of 100,000 Human Cancer Genomes Reveals the Landscape of Tumor Mutational burden. *Genome Med.* 9 (1), 34. doi:10.1186/s13073-017-0424-2

- Dow, L. E., O'Rourke, K. P., Simon, J., Tschaharganeh, D. F., van Es, J. H., Clevers, H., et al. (2015). Apc Restoration Promotes Cellular Differentiation and Reestablishes Crypt Homeostasis in Colorectal Cancer. *Cell* 161 (7), 1539–1552. doi:10.1016/j.cell.2015.05.033
- Eklöf, V., Wikberg, M. L., Edin, S., Dahlin, A. M., Jonsson, B.-A., Öberg, A., et al. (2013). The Prognostic Role of KRAS, BRAF, PIK3CA and PTEN in Colorectal Cancer. *Br. J. Cancer* 108 (10), 2153–2163. doi:10.1038/bjc.2013.212
- Engel, C., Ahadova, A., Seppälä, T. T., Aretz, S., Bigirwamungu-Bargeman, M., Bläker, H., et al. (2020). “Associations of Pathogenic Variants in MLH1, MSH2, and MSH6 with Risk of Colorectal Adenomas and Tumors and with Somatic Mutations in Patients with Lynch Syndrome.” *Gastroenterology*, 158, 5, 1326–1333. doi:10.1053/j.gastro.2019.12.032
- Esteban-Jurado, C., au, fnm., Vila-Casadesús, M., Garre, P., Lozano, J. J., Pristoupilova, A., et al. (2015). Whole-exome Sequencing Identifies Rare Pathogenic Variants in New Predisposition Genes for Familial Colorectal Cancer. *Genet. Med.* 17 (2), 131–142. doi:10.1038/gim.2014.89
- Fennell, L. J., Kane, A., Liu, C., McKeone, D., Fernando, W., Su, C., et al. (2020). APC Mutation Marks an Aggressive Subtype of BRAF Mutant Colorectal Cancers. *Cancers* 12 (5), 1171. doi:10.3390/cancers12051171
- Fujita, M., Liu, X., Iwasaki, Y., Terao, C., Mizukami, K., Kawakami, E., et al. (2020). Population-based Screening for Hereditary Colorectal Cancer Variants in Japan. *Clin. Gastroenterol. Hepatol.* doi:10.1016/j.cgh.2020.12.007
- Gentiluomo, M., Canzian, F., Nicolini, A., Gemignani, F., Landi, S., and Campa, D. (2020). “Germline Genetic Variability in Pancreatic Cancer Risk and Prognosis.” *Semin. Cancer Biol.* doi:10.1016/j.semcancer.2020.08.003
- Giri, V. N., Knudsen, K., Kelly, W., Cheng, H., Cooney, K., Cookson, M., et al. “Implementation of Germline Testing for Prostate Cancer: Philadelphia Prostate Cancer Consensus Conference 2019.” *J. Clin. Oncol.*, 38, 24, 2798–2811. doi:10.1200/jco.20.00046
- Helmink, B. A., Reddy, S. M., Gao, J., Zhang, S., Basar, R., Thakur, R., et al. (2020). B Cells and Tertiary Lymphoid Structures Promote Immunotherapy Response. *Nature* 577 (7791), 549–555. doi:10.1038/s41586-019-1922-8
- Huang, W., Li, H., Shi, X., Lin, M., Liao, C., Zhang, S., et al. (2021). Characterization of Genomic Alterations in Chinese Colorectal Cancer Patients. *Jpn. J. Clin. Oncol.* 51 (1), 120–129. doi:10.1093/jco/hyaa182
- Latham, A., Srinivasan, P., Kemel, Y., Shia, J., Bandlamudi, C., Mandelker, D., et al. (2019). Microsatellite Instability Is Associated with the Presence of Lynch Syndrome Pan-Cancer. *J. Clin. Oncol.* 37 (4), 286–295. doi:10.1200/jco.18.00283
- Li, M. M., Datto, M., Duncavage, E. J., Kulkarni, S., Lindeman, N. I., Roy, S., et al. (2017). Standards and Guidelines for the Interpretation and Reporting of Sequence Variants in Cancer: A Joint Consensus Recommendation of the Association for Molecular Pathology, American Society of Clinical Oncology, and College of American Pathologists. *J. Mol. Diagn.* 19 (1), 4–23. doi:10.1016/j.jmoldx.2016.10.002
- Liu, M., Liu, X., Suo, P., Gong, Y., Qu, B., Peng, X., et al. (2020). The Contribution of Hereditary Cancer-Related Germline Mutations to Lung Cancer Susceptibility. *Transl Lung Cancer Res.* 9 (3), 646–658. doi:10.21037/tlcr-19-403
- Ma, H., Brosens, L. A. A., Offerhaus, G. J. A., Giardiello, F. M., de Leng, W. W. J., and Montgomery, E. A. (2018). Pathology and Genetics of Hereditary Colorectal Cancer. *Pathology* 50 (1), 49–59. doi:10.1016/j.pathol.2017.09.004
- McClellan, J., and King, M.-C. (2010). “Genetic Heterogeneity in Human Disease.” *Cell*, 141, 2, 210–217. doi:10.1016/j.cell.2010.03.032
- Medina Pabón, M. A., and Babiker, H. M. (2021). *StatPearls. Treasure Island (FL)*. StatPearls Publishing Copyright © 2021 StatPearls Publishing LLC., Treasure Island, FL, USA, .
- Mueller, M., Schneider, M. A., Deplazes, B., Cabalzar-Wondberg, D., Rickenbacher, A., and Turina, M. (2021). “Colorectal Cancer of the Young Displays Distinct Features of Aggressive Tumor Biology: A Single-center Cohort Study.” *Wjgs*, 13, 2, 164–175. doi:10.4240/wjgs.v13.i2.164
- Nahorski, M. S., Lim, D. H. K., Martin, L., Gille, J. J. P., McKay, K., Rehal, P. K., et al. (2010). Investigation of the Birt-Hogg-Dube Tumour Suppressor Gene (FLCN) in Familial and Sporadic Colorectal Cancer. *J. Med. Genet.* 47 (6), 385–390. doi:10.1136/jmg.2009.073304
- Offman, J., Gascoigne, K., Bristow, F., Macpherson, P., Bignami, M., Casorelli, I., et al. (2005). Repeated Sequences in CASPASE-5 and FANCD2 but Not NF1 Are Targets for Mutation in Microsatellite-Unstable Acute Leukemia/myelodysplastic Syndrome. *Mol. Cancer Res.* 3 (5), 251–260. doi:10.1158/1541-7786.Mcr-04-0182
- Petitprez, F., de Reyniès, A., Keung, E. Z., Chen, T. W.-W., Sun, C.-M., Calderaro, J., et al. (2020). B Cells Are Associated with Survival and Immunotherapy Response in Sarcoma. *Nature* 577 (7791), 556–560. doi:10.1038/s41586-019-1906-8
- Ramroop, J. R., Gerber, M. M., and Toland, A. E. (2019). Germline Variants Impact Somatic Events during Tumorigenesis. *Trends Genet.* 35 (7), 515–526. doi:10.1016/j.tig.2019.04.005
- Reilly, N. M., Novara, L., Di Nicolantonio, F., and Bardelli, A. (2019). Exploiting DNA Repair Defects in Colorectal Cancer. *Mol. Oncol.* 13 (4), 681–700. doi:10.1002/1878-0261.12467
- Ren, H., Zhao, S., Li, W., Dong, H., Zhou, M., Cao, M., et al. (2014). Therapeutic Antitumor Efficacy of B Cells Loaded with Tumor-Derived Autophagosomes Vaccine (DRibbles). *J. Immunother.* 37 (8), 383–393. doi:10.1097/cji.0000000000000051
- Richards, F. M., McKee, S. A., Rajpar, M. H., Cole, T. R. P., Evans, D. G. R., Jankowski, J. A., et al. (1999). Germline E-Cadherin Gene (CDH1) Mutations Predispose to Familial Gastric Cancer and Colorectal Cancer. *Hum. Mol. Genet.* 8 (4), 607–610. doi:10.1093/hmg/8.4.607
- Rizvi, N. A., Hellmann, M. D., Snyder, A., Kvistborg, P., Makarov, V., Havel, J. J., et al. (2015). Cancer Immunology. Mutational Landscape Determines Sensitivity to PD-1 Blockade in Non-small Cell Lung Cancer. *Science* 348 (6230), 124–128. doi:10.1126/science.aaa1348
- Sa, R., Song, H., Wei, M., Su, H., Hong, Y., Zhou, L., et al. (2020). The Impact of APC Polymorphisms on the Transition from Polyps to Colorectal Cancer (CRC). *Gene* 740, 144486. doi:10.1016/j.gene.2020.144486
- Samstein, R. M., Lee, C.-H., Shoushtari, A. N., Hellmann, M. D., Shen, R., Janjigian, Y. Y., et al. (2019). Tumor Mutational Load Predicts Survival after Immunotherapy across Multiple Cancer Types. *Nat. Genet.* 51 (2), 202–206. doi:10.1038/s41588-018-0312-8
- Samstein, R. M., and Riaz, N. (2018). The DNA Damage Response in Immunotherapy and Radiation. *Adv. Radiat. Oncol.* 3 (4), 527–533. doi:10.1016/j.adro.2018.08.017
- Schneider, N. B., Pastor, T., Paula, A. E. d., Achatz, M. I., Santos, Á. R. d., Vianna, F. S. L., et al. (2018). Germline MLH1, MSH2 and MSH6 Variants in Brazilian Patients with Colorectal Cancer and Clinical Features Suggestive of Lynch Syndrome. *Cancer Med.* 7 (5), 2078–2088. doi:10.1002/cam4.1316
- Snowhill, T., Coelho, H., Huxley, N., Jones-Hughes, T., Briscoe, S., Frayling, I. M., et al. (2017). “Molecular Testing for Lynch Syndrome in People with Colorectal Cancer: Systematic Reviews and Economic Evaluation.” *Health Technol. Assess.*, 21, 51, 1–238. doi:10.3310/hta21510
- Sokic-Milutinovic, A. (2019). “Appropriate Management of Attenuated Familial Adenomatous Polyposis: Report of a Case and Review of the Literature.” *Dig. Dis.*, 37, 5, 400–405. doi:10.1159/000497207
- Stadler, Z. K., Battaglin, F., Middha, S., Hechtman, J. F., Tran, C., Cercek, A., et al. (2016). Reliable Detection of Mismatch Repair Deficiency in Colorectal Cancers Using Mutational Load in Next-Generation Sequencing Panels. *Jco* 34 (18), 2141–2147. doi:10.1200/jco.2015.65.1067
- Thanikachalam, K., and Khan, G. (2019). Colorectal Cancer and Nutrition. *Nutrients* 11 (1), 164. doi:10.3390/nu11010164
- Wang, H., Chen, Y., and Wu, G. (2016). SDHB Deficiency Promotes TGFβ-Mediated Invasion and Metastasis of Colorectal Cancer through Transcriptional Repression Complex SNAIL1-Smad3/4. *Translational Oncol.* 9 (6), 512–520. doi:10.1016/j.tranon.2016.09.009
- Wang, X., and Li, M. (2019). Correlate Tumor Mutation burden with Immune Signatures in Human Cancers. *BMC Immunol.* 20 (1), 4. doi:10.1186/s12865-018-0285-5
- Wang, Z., Zhao, J., Wang, G., Zhang, F., Zhang, Z., Zhang, F., et al. (2018). Computations in DNA Damage Response Pathways Serve as Potential Biomarkers for Immune Checkpoint Blockade. *Cancer Res.* 78 (22), 6486–6496. doi:10.1158/0008-5472.Can-18-1814
- Wei, X., Jin, Y., Tian, Y., Zhang, H., Wu, J., Lu, W., et al. (2016). Regulatory B Cells Contribute to the Impaired Antitumor Immunity in Ovarian Cancer Patients. *Tumor Biol.* 37 (5), 6581–6588. doi:10.1007/s13277-015-4538-0
- Wells, K., and Wise, P. E. (2017). Hereditary Colorectal Cancer Syndromes. *Surg. Clin. North America* 97 (3), 605–625. doi:10.1016/j.suc.2017.01.009
- Wu, H.-X., Wang, Z.-X., Zhao, Q., Wang, F., and Xu, R.-H. (2019). “Designing Gene Panels for Tumor Mutational Burden Estimation: the Need to Shift from ‘correlation’ to ‘accuracy’.” *J. Immunotherapy Cancer.* 7. 1. doi:10.1186/s40425-019-0681-2

- Yan, P., Klingbiel, D., Saridaki, Z., Ceppa, P., Curto, M., McKee, T. A., et al. (2016). Reduced Expression of SMAD4 Is Associated with Poor Survival in Colon Cancer. *Clin. Cancer Res.* 22 (12), 3037–3047. doi:10.1158/1078-0432.Ccr-15-0939
- Yang, Y., Han, Z., Han, Z., Li, X., Huang, A., Shi, J., et al. (2020). Epidemiology and Risk Factors of Colorectal Cancer in China. *Chin. J. Cancer Res.* 32 (6), 729–741. doi:10.21147/j.issn.1000-9604.2020.06.06
- Yurgelun, M. B., Kulke, M. H., Fuchs, C. S., Allen, B. A., Uno, H., Hornick, J. L., et al. (2017). Cancer Susceptibility Gene Mutations in Individuals with Colorectal Cancer. *Jco* 35 (10), 1086–1095. doi:10.1200/jco.2016.71.0012
- Zhang, J., Shih, D. J. H., and Lin, S.-Y. (2020). Role of DNA Repair Defects in Predicting Immunotherapy Response. *Biomark Res.* 8, 23. doi:10.1186/s40364-020-00202-7
- Zhunossova, G., Afonin, G., Abdikerim, S., Jumanov, A., Perfilyeva, A., Kaidarova, D., et al. (2019). Mutation Spectrum of Cancer-Associated Genes in Patients with Early Onset of Colorectal Cancer. *Front. Oncol.* 9, 673. doi:10.3389/fonc.2019.00673

Conflict of Interest: The authors declare that the research was conducted in the absence of any commercial or financial relationships that could be construed as a potential conflict of interest.

Publisher's Note: All claims expressed in this article are solely those of the authors and do not necessarily represent those of their affiliated organizations, or those of the publisher, the editors and the reviewers. Any product that may be evaluated in this article, or claim that may be made by its manufacturer, is not guaranteed or endorsed by the publisher.

Copyright © 2022 Xie, Ke, Chen, Li, Wang, Chen, Ding and Cheng. This is an open-access article distributed under the terms of the Creative Commons Attribution License (CC BY). The use, distribution or reproduction in other forums is permitted, provided the original author(s) and the copyright owner(s) are credited and that the original publication in this journal is cited, in accordance with accepted academic practice. No use, distribution or reproduction is permitted which does not comply with these terms.