



Association of the Lactase Persistence Haplotype Block With Disease Risk in Populations of European Descent

Shannon E. K. Joslin¹, Blythe P. Durbin-Johnson^{2,3}, Monica Britton²,
Matthew L. Settles², Ian Korf^{2,4} and Danielle G. Lemay^{2,5,6*}

¹ Department of Animal Science, UC Davis, Davis, CA, United States, ² UC Davis Genome Center, Davis, CA, United States, ³ Department of Public Health Sciences, UC Davis School of Medicine, Davis, CA, United States, ⁴ Department of Molecular and Cellular Biology, UC Davis, Davis, CA, United States, ⁵ USDA ARS Western Human Nutrition Research Center, Davis, CA, United States, ⁶ Department of Nutrition, UC Davis, Davis, CA, United States

OPEN ACCESS

Edited by:

L. Joseph Su,
University of Arkansas for Medical
Sciences, United States

Reviewed by:

Kui Zhang,
Michigan Technological University,
United States
Raja Amir Hassan Kuchay,
Baba Ghulam Shah Badshah
University, India
Luana Caroline Oliveira,
Federal University of Paraná, Brazil

*Correspondence:

Danielle G. Lemay
Danielle.Lemay@usda.gov

Specialty section:

This article was submitted to
Human Genomics,
a section of the journal
Frontiers in Genetics

Received: 04 May 2020

Accepted: 08 October 2020

Published: 29 October 2020

Citation:

Joslin SEK, Durbin-Johnson BP,
Britton M, Settles ML, Korf I and
Lemay DG (2020) Association of the
Lactase Persistence Haplotype Block
With Disease Risk in Populations
of European Descent.
Front. Genet. 11:558762.
doi: 10.3389/fgene.2020.558762

Among people of European descent, the ability to digest lactose into adulthood arose via strong positive selection of a highly advantageous allele encompassing the lactase gene. Lactose-tolerant and intolerant individuals may have different disease risks due to the shared genetics of their haplotype block. Therefore, the overall objective of the study was to assess the genetic association of the lactase persistence haplotype to disease risk. Using data from the 1000Genomes project, we estimated the size of the lactase persistence haplotype block to be 1.9 Mbp containing up to 9 protein-coding genes and a microRNA. Based on the function of the genes and microRNA, we studied health phenotypes likely to be impacted by the lactase persistence allele: prostate cancer status, cardiovascular disease status, and bone mineral density. We used summary statistics from large genome-wide meta-analyses—32,965 bone mineral density, 140,306 prostate cancer and 184,305 coronary artery disease subjects—to evaluate whether the lactase persistence allele was associated with these disease phenotypes. Despite the fact that previous work demonstrated that the lactase persistence haplotype block harbors increased deleterious mutations, these results suggest little effect on the studied disease phenotypes.

Keywords: human evolution, population genetics, diet, physiological traits, phenotype, selective sweep, lactose, lactose tolerance

INTRODUCTION

Lactose is the main carbohydrate found in milk. The enzyme lactase, encoded by the *LCT* gene, allows for the breakdown of lactose in infant mammals. Various human populations continue to express *LCT* post weaning and can digest lactose into adulthood, a trait known as lactase persistence (LP) (Swallow, 2003). The rs4988235 (−13910 C > T) transition variant, or LP allele, in the promoter of the *LCT* gene allows for LP in populations of European descent. The allele frequency of this advantageous mutation rapidly rose in groups with milk and dairy production and consumption relatively recently, as seen by

the signature of a relatively large haplotype block surrounding the LP allele (Bersaglieri et al., 2004; Itan et al., 2009; Ségurel and Bon, 2017). Therefore, lactose tolerant and intolerant individuals' genetic backgrounds differ in the alleles surrounding the LP allele. Positive selection for the trait of LP can hold slightly deleterious alleles that are in linkage disequilibrium (LD) with the LP allele at a higher frequency than expected under balancing selection alone (Smith and Haigh, 1974; Fay and Wu, 2000; Chun and Fay, 2011; Cutter and Payseur, 2013). Prior work by Chun and Fay (2011) found European samples harbored multiple deleterious or neutral non-synonymous SNPs within the *LCT* gene and two other genes in the surrounding region. However, it is unclear whether mutations found within the LP haplotype block give rise to unfavorable phenotypes. Determining the differential risk of disease based on individual genetic backgrounds with the indirect phenotype of lactase persistence may help resolve contrasting epidemiological findings and improve public health. Therefore, the objective of this study was to determine the size of the LP haplotype block and its impact on disease risk in humans with and without the LP allele.

MATERIALS AND METHODS

Data Sets

Genotype

The 1000 Genomes Phase 3 datasets were accessed on March 15, 2016 from the organization's data portal¹. Unrelated individuals from the 1000 Genomes ethnic classifications of Northern and Western European Ancestry (CEU), Finish (FIN), English or Scottish (GBR), Iberian (IBS) or Italian (TSI) were used to define the lactase persistence haplotype block.

Osteoporosis

Data used in our osteoporosis analyses were downloaded from the 2015 data release of the GEFOS single variant bone mineral density (BMD) meta-analysis dataset comprised of individuals of European ancestry (Zheng et al., 2015). We accessed the genome-wide meta-analysis summary statistics from the genome-wide association meta-analysis (GWAMA) of femoral neck BMD, forearm BMD and lumbar spine BMD using 32,965 individuals in the publicly accessible GEFOS database² in July 2018. To date, the GEFOS study is the largest publicly accessible femoral neck, lumbar spine and forearm bone mineral density genome-wide meta-analysis dataset.

Prostate Cancer

In order to carry out our prostate cancer analyses we accessed summary association statistics data from the publicly accessible Prostate Cancer Association Group to Investigate Cancer Associated Alterations in the Genome (PRACTICAL) consortium Oncoarray database³ in July 2018. Genome-wide meta-analysis statistics of prostate cancer from 79,194 prostate

cancer cases and 61,112 controls of European ancestry were made publicly available in 2018 from the PRACTICAL dataset and were subsequently used in our analyses (Schumacher et al., 2018).

Coronary Artery Disease

Meta-analysis summary data for individuals with coronary artery disease were accessed from the CARDIoGRAMplusC4D 1000 Genomes-based GWAS dataset⁴ in October 2017. The dataset is a meta-analysis of GWAS studies of mainly European, South Asian, and East Asian descent imputed using the 1000 Genomes phase 1 v3 training set with 38 million variants and was made publicly available in 2015. The study interrogated 9.4 million variants and involved 60,801 CAD cases and 123,504 controls (Nikpay et al., 2015). To date, this dataset is the most comprehensive GWAS of coronary artery disease in populations of European descent.

Analysis

Characterizing Lactase Persistence LD

We determined the pattern of LD with the lactase persistence T allele at rs4988235 in populations of European descent from the 1000 Genomes Phase 3 datasets. Unrelated subjects of CEU, FIN, GBR, IBS or TSI ethnicity were considered for the purpose of our analysis. Downloaded data were converted from vcf to PLINK formatted ped/map files using the fctools software (Roshyara and Scholz, 2014). Genome-wide pairwise associations with marker rs4988235 (2:136608646_G_A) were calculated in PLINK (Purcell et al., 2007). Pairwise calculations were conducted using 1,000,000 markers and 1,000,000,000 base pair windows. Thus, the upper limit of distance or pairwise comparisons for the marker of interest shall not exceed more than 1 M markers nor 100 Mb. LD was measured using r^2 and calculated with the equation: $r^2(p_a, p_b, p_{ab}) = \frac{(p_{ab} - p_a p_b)^2}{p_a(1-p_a)p_b(1-p_b)}$, where p_a , p_b and p_{ab} denote the frequencies of the a and b alleles and the ab haplotype, respectively. A SNP with $r^2 > 0.2$ was considered in LD with rs4988235 for the purpose of this study. The upper and lower boundaries of European LP haplotype block were determined by selecting the most distant SNPs with an $r^2 > 0.2$ with rs4988235.

Omnibus Effect

To test if SNPs in high LD with the LP SNP are also associated with a disease of interest, class-level genetic association tests (GenCAT) were performed for individual phenotypes within each disease using the GenCAT package in R (Qian et al., 2016). These tests use a user defined "class" of SNPs, in this case SNPs in high LD ($r^2 > 0.2$) with the LP SNP, to see if either the number of SNPs in the class or correlations of the SNPs in the class are statistically meaningful when compared to the SNPs associated with a disease of interest. Log odds ratios for all effect alleles were aligned to be in phase with the lactase persistence haplotype. SNPs in high LD ($r^2 > 0.2$) were considered a class and tested to determine if class had an effect on all phenotypes for each disease. A total of five phenotypes corresponding to three different diseases were evaluated for a class effect of LP haplotype block on the phenotype of interest (Table 1). We investigated

¹ftp.1000genomes.ebi.ac.uk/vol1/ftp/technical/reference/phase2_reference_assembly_sequence/hs37d5.fa.gz

²http://www.gefos.org/sites/default/files/README.txt

³http://practical.icr.ac.uk/blog/?page_id=8164

⁴www.CARDIOGRAMPLUSC4D.ORG

TABLE 1 | Disease phenotypes, measurements and corresponding test statistics.

Phenotype	Measure	Fisher's exact test <i>P</i> -value	Wilcoxon <i>P</i> -value, test on two-sided <i>P</i> -values	Wilcoxon <i>P</i> -value, test on upper <i>P</i> -values	Wilcoxon <i>P</i> -value, test on lower <i>P</i> -values	Mean Beta for SNPs in Phase
Prostate cancer	Affected	1	0.001393	1	1.611e-7	1.021982
Coronary artery disease	Affected	1	2.2e-16	2.545e-11	1	0.995843
BMD	Femoral neck	1	0.03217	1	2.2e-16	1.006456
BMD	Lumbar spine	1	1	1	2.2e-16	1.005034
BMD	Forearm	1	2.2e-16	1	2.2e-16	1.009849

class associations of the lactase persistence haplotype block on the following phenotypes: femoral neck bone mineral density, forearm bone mineral density, lumbar spine bone mineral density, individuals with prostate cancer, and individuals with coronary artery disease.

Enrichment Analyses

To determine if disease-associated markers were enriched in the lactase persistence haplotype, the distribution of *p*-values associated with SNPs in linkage disequilibrium and equilibrium were compared. A Fisher's Exact Test was used to test if the proportion of markers with an adjusted *p*-value less than 0.05 (Bonferroni correction) in each phenotype's meta-analysis results were higher among SNPs in high LD ($r^2 > 0.2$) with the lactase persistence SNP than expected under homogeneity. Wilcoxon rank sum tests were used to test if markers in high LD ($r^2 > 0.2$) with the lactase persistence marker (rs4988235) had significantly smaller *p*-values in a meta-analysis than those not in high LD. For each meta-analysis, this test was performed on three different sets of *p*-values:

- (1) Two-sided *p*-value (i.e., the raw *p*-value provided in the disease phenotype meta-analysis results), to test if the log odds ratio beta does not equal zero, i.e., an effect of a SNP on the case status in either direction. A significant enrichment test based on these *p*-values means that the SNPs most associated with case status (e.g., CAD, prostate cancer), or BMD (regardless of direction) are enriched for SNPs in LD with the lactase persistence SNP.
- (2) One-sided, upper, *p*-value to test if beta is greater than zero (derived from the *Z* statistic in the disease phenotype meta-analysis table), i.e., if a SNP is associated with a higher odds of case status or higher BMD. A significant enrichment test based on these *p*-values means that the SNPs most associated with higher odds of case status (e.g., CAD, prostate cancer), or higher BMD, are enriched for SNPs in LD with the lactase persistence SNP.
- (3) One-sided, lower, *p*-value to test if beta is less than zero (derived from the *Z* statistic in the disease phenotype meta-analysis table), i.e., if a SNP is associated with a lower odds of case status or lower BMD. A significant enrichment test based on these *p*-values means that the SNPs most associated with lower odds of case status (e.g., CAD, prostate cancer), or lower BMD, are enriched for SNPs in LD with the lactase persistence SNP.

Software

The software versions used in this paper are R versions 3.3.1, 3.3.2, and 3.4.0, fcgene-1.0.7 (Roslyara and Scholz, 2014), METAL version 2011-3-25 (Willer et al., 2010), and PLINK v1.90p 64-bit (Purcell et al., 2007). Analyses were conducted using the following R packages: GenCAT version 1.0.3 (Qian et al., 2016), SNPRelate version 1.8.0 (Zheng et al., 2012), snpStats version (Solé et al., 2006).

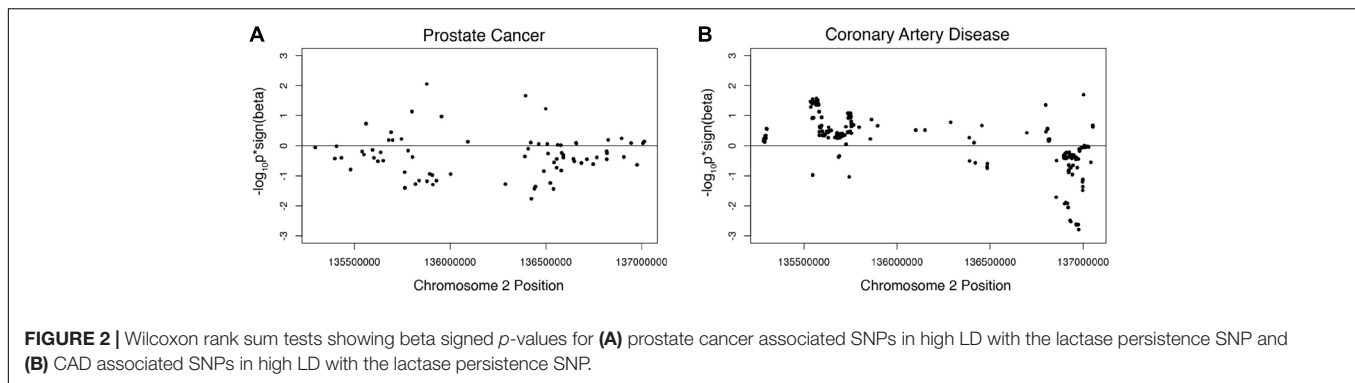
RESULTS

Patterns of Linkage Disequilibrium

We determined the pattern of LD with rs4988235 in populations of European descent from the 1000 Genomes Phase 3 datasets. Unrelated subjects of CEU, FIN, GBR, IBS or TSI ethnicity were considered for the purpose of our analysis. These individuals ($n = 407$) had a minor allele frequency (MAF) of 0.497852 for the lactase non-persistent (ancestral) C allele at rs4988235 (2:136608646_G_A). The European lactase persistence haplotype block ($r^2 > 0.2$) was 1.89 Mb, spanned from rs3791298 (135,163,759) to rs6706934 (137,052,317) on chromosome 2 and contained 1,187 SNPs in high LD with rs4988235 (**Figure 1**, **Supplementary Figures S2, S3**). This linkage block contains at least nine protein-coding genes and one micro-RNA. The protein-coding genes include RAB3GAP1, ZRANB3, R3HDM1, UBXN4, *LCT*, MCM6, DARS, CXCR4, THS7B, and possibly MAP3K19. The microRNA is MIR128-1. These genes and their known functions are listed in **Supplementary Table S1**. The microRNA, MIR-128-1, and two genes—CXCR4 and THSD7B—in the *LCT* locus all have putative roles in prostate cancer (**Supplementary Table S2**). We also manually reviewed the 100 SNPs most highly correlated with the lactase persistence SNP for known health associations in the literature. Numerous SNPs in the *LCT* locus were associated with total cholesterol or cardiovascular disease (**Supplementary Table S3**). Thus, the health phenotypes of prostate cancer and cardiovascular disease were chosen for further study. Bone mineral density phenotypes were also chosen for study due to the association of milk consumption with fracture risk in a cohort of people of European descent in which there was no assessment of genetics (Michaëlsson et al., 2014).

Health Phenotypes

For the health phenotypes of interest, we collected publicly available summary statistics from genome-wide meta-analyses



lower, but is nearly the same as association with controls. The former test (using Wilcoxon) is a comparison of the odds ratios in the *LCT* locus compared to the odds ratios outside of the *LCT* locus while the latter measurement (mean beta) is a statement about the odds ratios in the *LCT* locus taken by themselves. While the results are equivocal on whether there is a lower risk of prostate cancer with the LP allele, one can safely conclude that the LP allele does not significantly increase prostate cancer risk.

Coronary Artery Disease

Given the known SNPs associated with total cholesterol in the *LCT* locus (**Supplementary Table S3**), we next investigated the association of this locus with the risk of coronary artery disease (CAD) using summary data from CARDIoGRAMplusC4D 1000 Genomes-based GWAS dataset which included 60,801 cases and 123,504 controls (Nikpay et al., 2015). The odds ratio of the LP allele was 0.0141738 in the coronary artery disease dataset. A Manhattan plot of the LP haplotype block in the context of chromosome 2 suggests that no individual SNPs in this block are significant for CAD (**Supplementary Figure S4**). The omnibus analysis revealed no significant association of markers in high LD with the LP allele with coronary heart disease ($p = 1$, **Supplementary Table S4**). The Fisher's exact test revealed no significant difference in the proportion of CAD case-associated SNPs being higher among SNPs in high LD with the lactase persistence SNP than would be expected under homogeneity. A one-sided Wilcoxon rank sum test revealed CAD-associated SNPs in high LD with the lactase persistence SNP had smaller p -values from the one-sided test that $\beta > 0$, compared to SNPs not in high LD with lactase persistence ($p = 2.545e-11$, **Figure 2B**, **Table 1**), suggesting a possible increase in odds of coronary artery disease associated with SNPs in LD with the LP allele, relative to those not in LD. However, the mean beta for all SNPs in LD with LP was 0.99 (**Table 1**), suggesting that the odds of the LP allele being associated with coronary artery disease is nearly the same as with controls. Taken together, there is limited support for an effect of the LP locus on the risk of CAD.

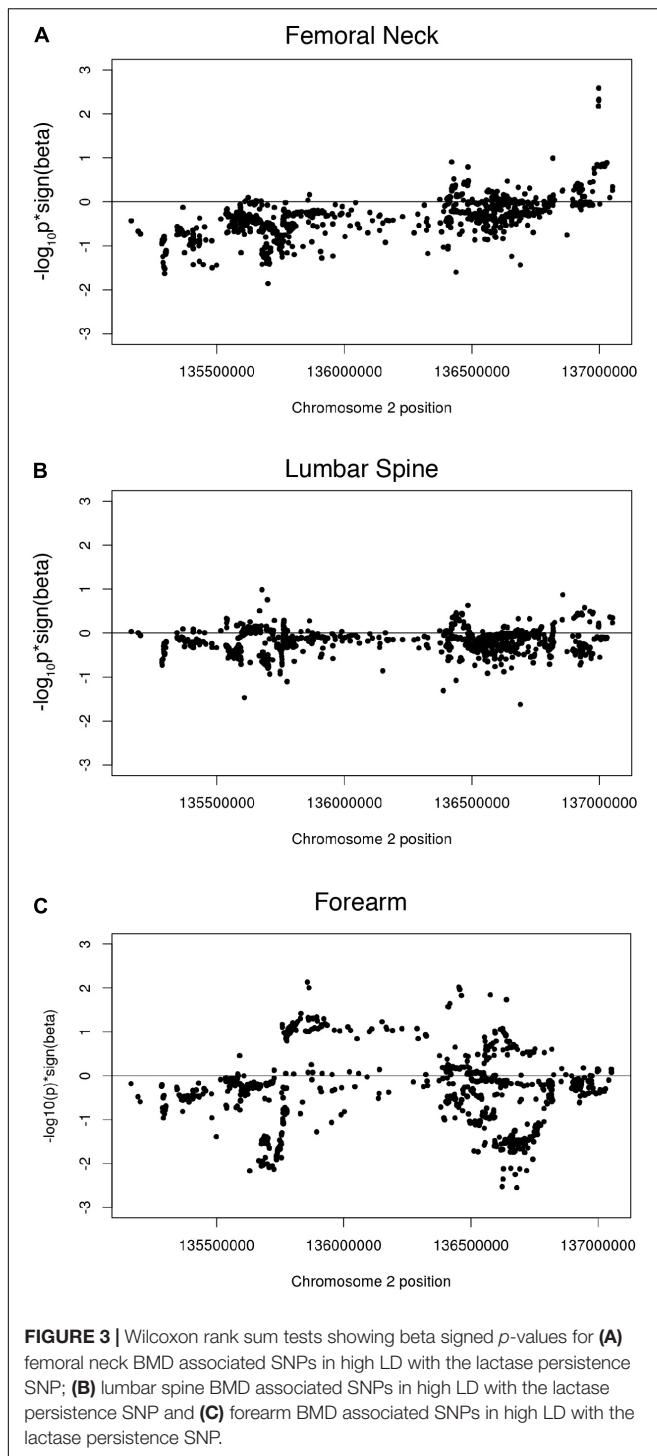
Bone Mineral Density

While most studies have shown a positive association of dairy consumption with bone mineral density, the paradoxical findings of increased fracture risk with increased milk consumption in a cohort of European descent suggested the potential for a

genetic risk shared among those with the LP allele. We therefore investigated associations of the LP locus with bone mineral density (BMD), using genome-wide meta-analysis summary statistics of BMD of the femoral neck, the forearm, and the lumbar spine from 32,965 individuals in the Genetic Factors for Osteoporosis Consortium (GEFOS) consortium. Manhattan plots of the LP haplotype block in the context of chromosome 2 suggests that no individual SNPs in this block are significant for any of the three BMD traits (**Supplementary Figures S5–S7**). Like the other phenotypes, the GenCAT analyses revealed no significant association of markers in high LD with the LP allele for any of the BMD measurements ($p = 1$, **Supplementary Table S4**). A one-sided Wilcoxon rank sum test revealed femoral neck, lumbar spine and forearm associated SNPs in high LD with the lactase persistence SNP had smaller p -values for one-sided tests of $\beta < 0$, compared to SNPs not in high LD with lactase persistence ($p = 2.2e-16$, **Figures 3A–C**, **Table 1**), suggesting a possible negative association of the *LCT* locus with bone mineral density relative to SNPs not in the locus. However, the mean beta for femoral neck, lumbar spine, and forearm BMD for all SNPs in phase with the LP SNP was approximately 1.01 for all three BMD sites (**Table 1**), suggesting little effect of the LP locus on BMD.

DISCUSSION

In the current study we investigated a locus in humans that encompasses the lactase gene (*LCT*) and shows signatures of strong, recent, positive selection with a relatively high deleterious mutation load, indicative of genetic hitchhiking. We identified the LP haplotype block in populations of European descent to be 1.9 Mb with at least nine protein-coding genes and one micro-RNA. Next, we investigated the association of the haplotype block with disease risk, prioritizing phenotypes based on known associations with SNPs in the region or with dairy consumption. Class-level (e.g., the class of all SNPs in the locus) associations were not significant for any of the phenotypes. Some of the enrichment tests were significant, but in the opposite direction of the sign of the average beta. Thus, despite recent selection for the lactase persistence allele there is little evidence that the LP haplotype block is associated with bone mineral density nor the risk of prostate cancer or coronary heart disease.



Between people who harbor the LP allele and those who don't, there are potential differences due to both genetics (e.g., DNA hitchhiking with the LP SNP in those with the LP allele) and dairy consumption. There was no information about dairy consumption for the participants included in the current analysis. However, a recent study of healthy United States adults demonstrated that the

LP genotype was only a very weak predictor of recent dairy intake as measured using 24-h recalls and was not significantly associated with overall habitual dairy intake measured using a food frequency questionnaire (Chin et al., 2019). Nevertheless, we are not able to quantify the contribution of dairy consumption to health phenotypes in the current study.

Prior studies have indicated that dairy consumption is associated with improved bone mineral density (Chan et al., 1995; Tai et al., 2015) and protective against cardiovascular disease (Alexander et al., 2016; Gholami et al., 2017; Dehghan et al., 2018), but potentially increases the risk of prostate cancer (Song et al., 2013; Aune et al., 2015). The relationship between dairy consumption and prostate cancer risk is controversial; a recent prospective investigation of 49,472 men in the United States found no association between dairy consumption and risk of prostate cancer (Preble et al., 2019). The fact that the lone microRNA in the *LCT* haplotype block has previously been shown to have a role in prostate cancer (Jin et al., 2014; Sun et al., 2015) implicated a potential for the genetics of the *LCT* locus to affect prostate cancer. However, we did not find evidence of this. MicroRNAs are highly redundant; for example, there is not a known knockout experiment of microRNAs in which their function has been shown to be essential. Thus, it is possible that deleterious mutations in or near the microRNA would have no effect on the phenotype.

Overall, across all studied phenotypes, there does not appear to be a notable effect of the LP locus on disease risk. This is surprising given the accelerated selection of the LP allele with increased potential for genetic hitchhiking and the fact that deleterious mutations have occurred in this locus at an increased rate (Chun and Fay, 2011). Our results suggest that these deleterious mutations have not given rise to unfavorable phenotypes for the studied diseases. Although it is possible that we have not studied a relevant phenotype, our manual review of the locus found SNPs or genes related to total cholesterol and prostate cancer, suggesting that cardiovascular disease and prostate cancer were the two phenotypes most likely to be affected by the genetics of the locus. Separately, the paradoxical findings of high milk consumption associated with increased fracture rate in a large cohort of European descent (Michaëlsson et al., 2014) might be explained by a genetic contribution given that dairy consumption is known to be associated with improved bone mineral density (Chan et al., 1995; Gholami et al., 2017; Dehghan et al., 2018). Thus, we covered the phenotypes most likely to be affected by the SNPs at the *LCT* locus and yet did not find an association of the locus with the phenotypes suspected to be affected. Additionally, we did not analyze other SNPs associated with LP, such as rs182549 ($-22018G > A$), due to having weaker associations of the derived allele and the LP phenotype (Enattah et al., 2002; Séguirel and Bon, 2017). Finally the rs4988235 T allele is not strictly predictive of the LP phenotype due to epigenetic effects (Leseva et al., 2018). Overall, our results suggest that rapid positive selection of the *LCT* locus and an increase in deleterious mutations have not translated into unfavorable disease phenotypes in humans.

DATA AVAILABILITY STATEMENT

Publicly available datasets were analyzed in this study. This data can be found here: http://ftp.1000genomes.ebi.ac.uk/vol1/ftp/technical/reference/phase2_reference_assembly_sequence/hs37d5.fa.gz; <http://www.gefos.org/sites/default/files/README.txt>; http://practical.icr.ac.uk/blog/?page_id=8164; www.CARDIOGRAMPLUSC4D.ORG.

AUTHOR CONTRIBUTIONS

SJ carried out manual reviews, contributed to the collection of the datasets, carried out bioinformatic analyses, interpreted results, and wrote the manuscript. BD-J conducted statistical analysis and interpretation. MB conducted bioinformatics analyses. MS and IK provided bioinformatics guidance. DL conceived and directed the study, coordinated the collection of the datasets, interpreted results, and wrote the manuscript. All authors contributed to study design, reviewed and edited the manuscript.

FUNDING

This work was supported by California Dairy Research Foundation. This research was also funded in part by United States Department of Agriculture 2032-51530-026-00D. The United States Department of Agriculture is an equal opportunity provider and employer. For the PRACTICAL consortium data, we thank the following for funding support: The Institute of Cancer Research and The Everyman Campaign, The Prostate Cancer Research Foundation, Prostate Research Campaign United Kingdom (now Prostate Action), The Orchid Cancer Appeal, The National Cancer Research Network United Kingdom, The National Cancer Research Institute (NCRI) United Kingdom. We are grateful for support of NIHR funding to the NIHR Biomedical Research Centre at

REFERENCES

- Alexander, D. D., Bylsma, L. C., Vargas, A. J., Cohen, S. S., Doucette, A., Mohamed, M., et al. (2016). Dairy consumption and CVD?: a systematic review and meta-analysis. *Br. J. Nutr.* 115, 737–750. doi: 10.1017/S0007114515005000
- Aune, D., Navarro Rosenblatt, D. A., Chan, D. S., Vieira, A. R., Vieira, R., Greenwood, D. C., et al. (2015). Dairy products, calcium, and prostate cancer risk?: a systematic review and meta-analysis of cohort studies. *Am. Soc. Nutr.* 101, 87–117. doi: 10.3945/ajcn.113.067157.Prostate
- Bersaglieri, T., Sabeti, P. C., Patterson, N., Vanderploeg, T., Schaffner, S. F., Drake, J. A., et al. (2004). Genetic signatures of strong recent positive selection at the lactase gene. *Am. J. Hum. Genet.* 74, 1111–1120. doi: 10.1086/421051
- Chan, G. M., Hoffman, K., and McMurry, M. (1995). Effects of dairy products on bone and body composition in pubertal girls. *J. Pediatr.* 126, 551–556.
- Chin, E. L., Huang, L., Bouzid, Y. Y., Kirschke, C. P., Durbin-Johnson, B., Baldiviez, L. M., et al. (2019). Association of lactase persistence genotypes (Rs4988235) and ethnicity with dairy intake in A. *Nutrients* 11, 1–23. doi: 10.3390/nu11081860
- Chun, S., and Fay, J. C. (2011). Evidence for hitchhiking of deleterious mutations within the human genome. *PLoS Genet.* 7:e1002240. doi: 10.1371/journal.pgen.1002240

The Institute of Cancer Research and The Royal Marsden NHS Foundation Trust. The Prostate cancer genome-wide association analyses are supported by the Canadian Institutes of Health Research, European Commission's Seventh Framework Programme grant agreement n° 223175 (HEALTH-F2-2009-223175), Cancer Research United Kingdom Grants C5047/A7357 C1287/A10118, C1287/A16563, C5047/A3354, C5047/A10692, C16913/A6135, and the National Institute of Health (NIH) Cancer Post-Cancer GWAS initiative grant: No. 1 U19 CA 148537-01 (the GAME-ON initiative). Genotyping of the OncoArray was funded by the United States National Institutes of Health (NIH) [U19 CA 148537 for ELucidating Loci Involved in Prostate cancer Susceptibility (ELLIPSE) project and X01HG007492 to the Center for Inherited Disease Research (CIDR) under contract number HHSN268201200008I] and by Cancer Research United Kingdom grant A8197/A16565. Additional analytic support was provided by NIH NCI U01 CA188392 (PI: Schumacher).

ACKNOWLEDGMENTS

We thank Fotios Drenos and Brendan J. Keeting for making earlier cardiovascular disease SNP data available to us. We thank Zeynep Alkan for comments on the manuscript. We thank the PRACTICAL consortium, CARDIOGRAMplusC4D Consortium, and GEFOS consortium for public access to their respective data sets. The data on coronary artery disease/myocardial infarction have been contributed by CARDIOGRAMplusC4D investigators.

SUPPLEMENTARY MATERIAL

The Supplementary Material for this article can be found online at: <https://www.frontiersin.org/articles/10.3389/fgene.2020.558762/full#supplementary-material>

- Cutter, A. D., and Payseur, B. A. (2013). Genomic signatures of selection at linked sites : unifying the disparity among species. *Nat. Rev. Genet.* 14, 262–274. doi: 10.1038/nrg3425
- Dehghan, M., Mente, A., Rangarajan, S., Sheridan, P., Mohan, V., Iqbal, R., et al. (2018). Association of dairy intake with cardiovascular disease and mortality in 21 countries from five continents (PURE): a prospective cohort study. *Lancet* 392, 2288–2297. doi: 10.1016/S0140-6736(18)31812-9
- Enattah, N. S., Sahi, T., Savilahti, E., Terwilliger, J. D., Peltonen, L., and Järvelä, I. (2002). Identification of a variant associated with adult-type hypolactasia. *Nat. Genet.* 30, 233–237. doi: 10.1038/ng826
- Fay, J. C., and Wu, C. I. (2000). Hitchhiking under positive darwinian selection. *Genetics* 155, 1405–1413.
- Gholami, F., Khoramdad, M., Esmailnasab, N., Moradi, G., Nouri, B., Safiri, S., et al. (2017). The effect of dairy consumption on the prevention of cardiovascular diseases: a meta-analysis of prospective studies. *J. Cardiovasc. Thorac. Res.* 9, 1–11. doi: 10.15171/jcvtr.2017.01
- Itan, Y., Powell, A., Beaumont, M. A., Burger, J., and Thomas, M. G. (2009). The origins of lactase persistence in Europe. *PLoS Comput. Biol.* 5:e1000491. doi: 10.1371/journal.pcbi.1000491
- Jin, M., Zhang, T., Liu, C., Badaeux, M. A., Liu, B., Liu, R., et al. (2014). MiRNA-128 suppresses prostate cancer by inhibiting BMI-1 to inhibit tumor-initiating cells. *Cancer Res.* 74, 4183–4195. doi: 10.1158/0008-5472.CAN-14-0404

- Leseva, M. N., Grand, R. J., Klett, H., Boerries, M., Busch, H., Binder, A. M., et al. (2018). Differences in DNA methylation and functional expression in lactase persistent and non-persistent individuals. *Sci Rep.* 8:5649. doi: 10.1038/s41598-018-23957-4
- Michaëlsson, K., Wolk, A., Langenskiöld, S., Basu, S., Warensjö Lemming, E., Melhus, H., et al. (2014). Milk intake and risk of mortality and fractures in women and men: cohort studies. *BMJ* 349, 1756–1833. doi: 10.1136/bmj.g6015
- Nikpay, M., Goel, A., Won, H. H., Hall, L. M., Willenborg, C., Kanoni, S., et al. (2015). A Comprehensive 1000 genomes–based genome-wide association meta-analysis of coronary artery disease. *Nat. Genet.* 47, 1121–1130. doi: 10.1038/ng.3396
- Preble, I., Zhang, Z., Kopp, R., Garzotto, M., Bobe, G., Shannon, J., et al. (2019). Dairy product consumption and prostate cancer risk in the United States. *Nutrients* 1–12. doi: 10.3390/nu11071615
- Purcell, S., Neale, B., Todd-Brown, K., Thomas, L., Ferreira, M. A., Bender, D., et al. (2007). PLINK: a tool set for whole-genome association and population-based linkage analyses. *Am. J. Hum. Genet.* 81, 559–575. doi: 10.1086/519795
- Qian, J., Nunez, S., Reed, E., Reilly, M. P., and Foulkes, A. S. (2016). A simple test of class-level genetic association can reveal novel cardiometabolic trait loci. *PLoS One*:e0148218. doi: 10.1371/journal.pone.0148218
- Roshvara, N. R., and Scholz, M. (2014). FcGENE?: a versatile tool for processing and transforming SNP datasets. *PLoS One* 9:e97589. doi: 10.1371/journal.pone.0097589
- Schumacher, F. R., Al Olama, A. A., Berndt, S. I., Benlloch, S., Ahmed, M., Saunders, E. J., et al. (2018). association analyses of more than 140,000 men identify 63 new prostate cancer susceptibility loci. *Nat. Genet.* 50, 928–936. doi: 10.1038/s41588-018-0142-8
- Ségurel, L., and Bon, C. (2017). On the evolution of lactase persistence in humans. *Annu. Rev. Genomics Hum. Genet.* 18, doi: 10.1146/annurev-genom-091416-35340
- Smith, J. M., and Haigh, J. (1974). The hitch-hiking effect of a favourable gene. *Genetics Res.* 23, 23–35. doi: 10.1017/S0016672308009579
- Solé, X., Guinó, E., Valls, J., Iniesta, R., and Moreno, V. (2006). SNPStats : a web tool for the analysis of association studies. *Bioinformatics* 22, 1928–1929. doi: 10.1093/bioinformatics/btl268
- Song, Y., Chavarro, J. E., Cao, Y., Qiu, W., Mucci, L., Sesso, H. D., et al. (2013). Whole milk intake is associated with prostate cancer-specific mortality among U.S. Male Physicians. *J. Nutr.* 143, 189–196. doi: 10.3945/jn.112.168484
- Sun, X., Li, Y., Yu, J., Pei, H., Luo, P., and Zhang, J. (2015). MiR-128 modulates chemosensitivity and invasion of prostate cancer cells through targeting ZEB1. *Jap. J. Clin. Oncol.* 45, 474–482. doi: 10.1093/jjco/hyv027
- Swallow, D. M. (2003). Genetics of lactase persistence and lactose. *Annu Rev Genet.* 37, 197–219. doi: 10.1146/annurev.genet.37.110801.143820
- Tai, V., Leung, W., Grey, A., Reid, I. R., and Bolland, M. J. (2015). Calcium intake and bone mineral density: systematic review and meta-analysis. *BMJ* 351:h4183. doi: 10.1136/bmj.h4183
- Willer, C. J., Li, Y., and Abecasis, G. R. (2010). METAL: fast and efficient meta-analysis of genomewide association scans. *Bioinformatics* 26, 2190–2191. doi: 10.1093/bioinformatics/btq340
- Zheng, H. F., Forgetta, V., Hsu, Y. H., Estrada, K., Rosello-Diez, A., Leo, P. J., et al. (2015). Whole-genome sequencing identifies EN1 as a determinant of bone density and fracture. *Nature* 526, 112–117. doi: 10.1038/nature14878
- Zheng, X., Levine, D., Shen, J., Gogarten, S. M., Laurie, C., and Weir, B. S. (2012). A high-performance computing toolset for relatedness and principal component analysis of SNP data. *Bioinformatics* 28, 3326–3328. doi: 10.1093/bioinformatics/bts606

Conflict of Interest: The authors declare that the research was conducted in the absence of any commercial or financial relationships that could be construed as a potential conflict of interest.

Copyright © 2020 Joslin, Durbin-Johnson, Britton, Settles, Korf and Lemay. This is an open-access article distributed under the terms of the Creative Commons Attribution License (CC BY). The use, distribution or reproduction in other forums is permitted, provided the original author(s) and the copyright owner(s) are credited and that the original publication in this journal is cited, in accordance with accepted academic practice. No use, distribution or reproduction is permitted which does not comply with these terms.