



OPEN ACCESS

EDITED BY
Ken Byrne,
University of Limerick, Ireland

REVIEWED BY
Tolga Ozturk,
Istanbul University-Cerrahpasa, Türkiye
Francesco Latterini,
Polish Academy of Sciences, Poland


*CORRESPONDENCE
Martin Duchan
✉ duchan@fld.czu.cz

RECEIVED 13 July 2024
ACCEPTED 09 September 2024
PUBLISHED 30 September 2024

CITATION
Allman M, Dudáková Z, Duchan M,
Jankovský M and Juško V (2024) Impact of
winch-assisted logging machinery on soil
disturbance in the mountainous forests of
Western Carpathians.
Front. For. Glob. Change 7:1464140.
doi: 10.3389/ffgc.2024.1464140

COPYRIGHT
© 2024 Allman, Dudáková, Duchan,
Jankovský and Juško. This is an open-access
article distributed under the terms of the
[Creative Commons Attribution License \(CC
BY\)](https://creativecommons.org/licenses/by/4.0/). The use, distribution or reproduction in
other forums is permitted, provided the
original author(s) and the copyright owner(s)
are credited and that the original publication
in this journal is cited, in accordance with
accepted academic practice. No use,
distribution or reproduction is permitted
which does not comply with these terms.

Impact of winch-assisted logging machinery on soil disturbance in the mountainous forests of Western Carpathians

Michal Allman¹, Zuzana Dudáková ¹, Martin Duchan^{1*},
Martin Jankovský¹ and Vladimír Juško²

¹Faculty of Forestry and Wood Sciences, Czech University of Life Sciences Prague, Prague, Czechia,
²Faculty of Forestry, Technical University in Zvolen, Zvolen, Slovakia

Introduction: Timber harvesting on steep terrain is a challenge in terms of economic viability, safety, and environmental performance. Felling with chainsaws and use of yarders seems optimal in this environment. However, using mobile traction winches allows for the safe work of ground-based technologies even in these challenging conditions.

Methods: Our study assessed the impact of winch-assisted cut-to-length harvesting on soil disturbance in young forest stands (up to 40 years old) across slopes of 14.9°–27.4° (27–52%). Utilizing 78 measurement points (i.e., 234 measurements), we analyzed soil samples from trail ruts, between ruts, and undisturbed areas for soil bulk density ($\text{g}\cdot\text{cm}^{-3}$) and soil moisture content (%), simultaneously measuring penetration resistance (MPa), penetration depth (cm) and rut depth (cm).

Results: The results highlighted that areas without winch assistance experienced the most significant increases in soil bulk density (up to 22.35%) and penetration resistance (up to 26.8%), though these differences were not statistically significant. Linear mixed effects models did not confirm a significant effect ($p > 0.05$) of a traction winch on the soil bulk density ($\text{g}\cdot\text{cm}^{-3}$) and penetration resistance (MPa) in the ruts of the forwarding trails. Mean forwarding trail profile depths ranged from 4.63 to 7.28 cm, with the maximum depths between 10.86 and 17.25 cm, showing deeper ruts in non-assisted areas. Moreover, the presence of the traction winch ($p < 0.05$) significantly affected the maximal depth of the forwarding trail rut.

Conclusion: The findings suggest that winch-assisted harvesting may mitigate soil disturbance (rut depths) on steep slopes, offering a sustainable option for utilizing ground-based machinery with reduced environmental impact.

KEYWORDS

CTL technologies, mobile traction winch, steep slopes, bulk density, penetration resistance, soil disturbance

1 Introduction

Slovakia is a mountainous country in the Central Europe. Its forest cover reaches 41.3%, which makes it the 13th most forested European country ([Ministry of Agriculture Rural Development of the Slovak Republic, 2022](#)). The demanding terrain conditions substantially limit the machinery and technologies Slovak foresters use. Approximately 22% of forests (422,000 ha) are located on slopes over 50% (26.57°), making them

impassable for conventional skidders (Ministry of Agriculture Rural Development of the Slovak Republic, 2022). Forest operations in mountainous conditions with steep slopes and rough terrain are particularly challenging (Latterini et al., 2024b). To carry out forest harvesting on steep slopes, foresters should use yarders combined with chainsaw felling (Cavalli, 2012; Holzleitner et al., 2018). Additionally, the forests on steep slopes are frequently young, established after windstorms and bark beetle disturbances (Sommerfeld et al., 2021). Small stem volume and the need to frequently remount the yarders in extreme conditions (Stampfer et al., 2006) contribute to the disinterest of foresters in using cable yarders. Yarders also show lower productivity, higher costs, and higher occupational health risks than ground-based technologies (Holzfeind et al., 2018; Raymond, 2010; Stampfer et al., 2006; Tsioras et al., 2014).

There is a possibility of deployment of cut-to-length (CTL) technologies, which are limited by the slope accessibility of standard forwarders and harvesters (Holzfeind et al., 2018). The highest level of soil disturbance generally occurs when ground-based forest operations are performed on slopes over 20% (Latterini et al., 2023). Cavalli and Amishev (2019) state that wheeled machinery equipped with wheel chains or semi-tracks can usually access a slope of 45% (24.23°), while tracked machines can climb up to 60% (30.96°). However, if winches secure the machines, they should be able to operate up to a slope between 75% (36.87°) and 85% (40.36°). Visser and Stampfer (2015) state that for downhill skidding, wheeled skidders can reach up to 50% (26.57°) slopes and crawler tractors can reach up to 60% (30.96°) slopes. Further, the authors state that operating from 50 (26.57°) to 60% (30.96°) slope is a critical zone where purpose-built steep terrain harvesters are required. Indeed, operating above 60% (30.96°) is considered hazardous and requires additional securing systems such as cable-assist or traction winch technology. Similarly, Garren et al. (2019) state that cable-assist technologies are a viable option for increasing the slope range of ground-based harvesting machinery.

Although there are technological advantages to increasing the slope range of ground-based machinery, the effects of enabling machine traffic in such demanding conditions on forest ecosystems, and especially on forest soils, should not be neglected (Picchio et al., 2020; Jourgholami et al., 2014). The ongoing climate change pressures foresters to assess the anthropic effects on ecosystems and minimize the short- and long-term ecosystem disturbances, such as post-harvesting disturbance. Indeed, through soil and tree damage, such disturbances further reduce the resilience of forest ecosystems to climate change. During forest operations, soil disturbance mainly relates to soil compaction after the machine's passage (Latterini et al., 2024a). CTL machines are heavy, which is a growing problem as producers continuously make larger and heavier machinery (Varol et al., 2020). These heavy forest machines compact the soil when they operate, create ruts (Cambi et al., 2015; Goutal et al., 2013) and lead to topsoil removal and displacement (Horn et al., 2004; Najafi and Solgi, 2010). The compaction of soil reduces its porosity and changes its structure (Macrí et al., 2017; Sohrabi et al., 2022; Solgi et al., 2015). These structural changes then cause an increase in soil penetration resistance, soil bulk density, and soil shear strength (Allman et al., 2015; Cambi et al., 2017; Picchio et al., 2020; Williamson and Neilsen, 2000). Subsequently, it decreases site productivity because soil compaction

exceeding three MPa of penetration resistance may hinder root growth (Blouin et al., 2008; Labelle et al., 2019). Wheels or tracks create compacted ruts, where water infiltration capacity is reduced, resulting in increased surface runoff (Ares et al., 2005; Lang et al., 2016). In steep terrains, surface runoff can cause substantial erosion and the removal of fertile topsoil (Etehad Abari et al., 2017).

While there is a substantial body of research on harvesting-induced soil disturbance in more favorable conditions where skidders and harvesters commonly operate (Allman et al., 2015; Cambi et al., 2017; Macrí et al., 2017; Picchio et al., 2020; Tavankar et al., 2017), studies on cable-assisted or mobile traction (Green et al., 2020) winched CTL technologies working on steep slopes are scarce. There is a lack of literature on soil disturbance (real-life measurements of soil properties) caused by this kind of technology.

To fill this knowledge gap, we asked: what are the effects of mobile traction winch-assisted CTL machines on soil in steep slopes? We hypothesize that the CTL technology causes significantly higher levels of soil disturbance on steep slopes (in terms of soil bulk density, penetration resistance, and deeper rutting).

2 Material and methods

2.1 Study area

Forests in the study were managed by Military Forests and Estates of the Slovak Republic, Forest district Kežmarok (Figure 1; GPS coordinates: 49°15'12.5" N 20°31'47.98" E). The Forest district was located in the northern part of Slovakia, in the steep, rugged slopes of Levoča mountain range (Western Carpathians).

The Forest district managed 17,833 ha of forests with elevation between 600 and 1,290 m asl. The most abundant species was *Picea abies* L. (63.2%), followed by *Fagus sylvatica* L. (14.4%), *Pinus sylvestris* L. (9.1%), *Abies alba* Mill. (5.8%), *Larix decidua* Mill. (3.5%), with annual harvests reaching ~45,000 m³ of timber and a forest road network density of 8.21 m/ha.

Due to the size and diversity of the area (from the perspective of the natural conditions), we only report on soils in stands with the measurement plots (Table 1). Umbric Podzols Schäd (2016) created from lighter solid products of weathering of acidic bedrock were the soil type in observed forest stands. According to soil particle size and texture classes, the soils were sandy loams, with a moderate soil water retention capacity (95–130 l/m²) and a moderate soil infiltration capacity (0.081–0.8 cm/min). The bedrock was created mainly from flyshoid sandstones. Mean annual rainfall in the observed mountain region ranges between 800 and 900 mm, and the mean annual temperature varies between 4 and 6°C. The mean potential evapotranspiration ranges between 400 and 450 mm. Detailed climatic data from the year 2022 were recorded by a GARNI 1025 Arcus (GARNI technology, Ostrava, Czech Republic) weather station located in Lubica village (GPS: 49°07'08.9" N and 20°29'42.9" E), the closest (16 km) weather station to the study area. According to the weather station, 595 mm of rainfall (monthly: Ø 49.55; min. 11.40; max. 107.72) occurred in 2022, which is slightly above normal (12 mm) compared to long-term rainfall (583 mm) at the given weather station. However, during August and September, when the harvesting and field work

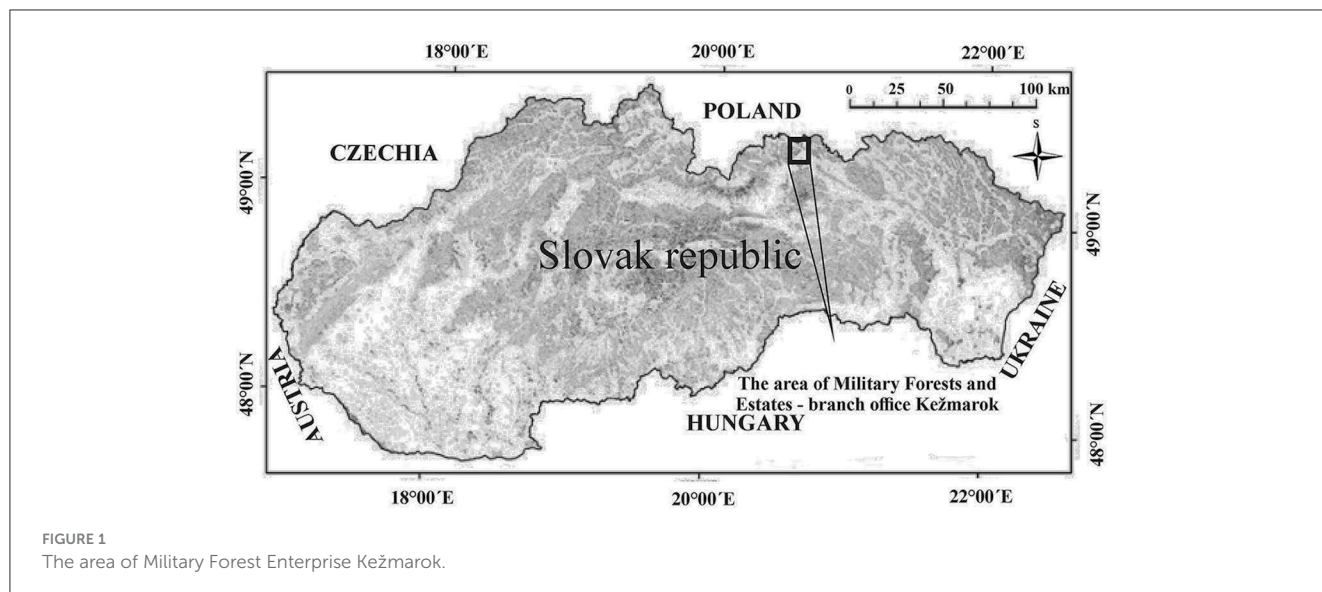


TABLE 1 Basic spatial and mensurational information on the observed forest stands.

Stand	1	2	3	Control
GPS coordinates	49°13'32.1" N 20°37'45.0" E	49°13'13.5" N 20°37'43.4" E	49°13'07.7" N 20°37'56.0" E	49°13'25.7" N 20°37'27.5" E
Stand area (ha)	15.53	7.42	17.22	7.03
Harvested area (ha)	9.31	4.03	8.67	2.89
Harvested volume by tree species (m ³)	Pa:442.17 Fs: 1.28	Pa:167.38 Fs: 54.41	Pa:391.29 Aa: 13.13	Pa: 109.34
Harvested volume Σ (m ³)	443.45	221.79	404.42	109.34
Harvested volume (m ³ /ha)	47.63	55.04	46.65	37.83
Stand age (years)	30	35	40	30
Tree species composition (%)	Pa: 85 Fs: 15	Pa: 70 Fs: 30	Pa: 85 Fs: 10 Aa: 5	Pa: 95 Aa: 5
Mean volume of harvested stems (m ³) ^{a)}	Pa: 0.11 Fs: 0.12	Pa: 0.28 Fs: 0.23	Pa: 0.20 Fs: 0.27 Aa: 0.21	Pa: 0.25 Aa: 0.35
Stocking	0.85	0.85	0.85	0.75
Elevation (m asl)	970–1,020	940–1,050	870–1,010	890–1,050
Mean slope % (°)	51.8 (27.4°)	46.4 (24.9°)	50.5 (26.8°)	26.7 (14.9°)
Exposure	East	East	East	North-west
Forwarding distance (m)	700	700	300	1,000
Number of sample plots/measurement locations	12/24	10/20	11/22	6/12
Technology with traction assistance	Yes	Yes	Yes	No

^{a)}Pa, *Picea abies* (L.); Fs, *Fagus sylvatica* (L.); Aa, *Abies alba* (Mill).

were conducted, the area experienced a rainfall deficit (August: –25.25%; September: +5.02%).

2.2 Logging operations and technology

The machinery was used as follows: a ROTTNE H11^C harvester and a ROTTNE F15^D forwarder were used to fell, limb, buck,

and extract timber from the forest stand to the roadside while secured by two Ecoforst TWINCH 10.1 mobile traction winches (i.e., a single winch per machine), located on the hilltops and radio-controlled by the harvester and forwarder operators (Table 2). The harvester carried out thinning operations and passed over 4 m wide trails, which the operator created (Supplementary Figure 1). Winch-assisted harvesting took place in stands with steep slopes (46.4–51.8%) no. 1, 2, and 3. The CTL machinery worked without

TABLE 2 Basic technical parameters of the machines deployed in the observed forest stands.

Machine	Rottne H11 ^C	Rottne F15 ^D	Machine	Ecoforst TWINCH 10.1
Type of machine	Harvester	Forwarder	Type of machine	Mobile traction winch
Engine output at 1,800 rpm (kW)	164	164	Diesel engine/power (kW)	IVECO S30 ENT—V/107
Tractive force (kN)	167	177	Fuel tank (l)	280
Crane	RK 185	RK 125	Weight (kg)	7,800
Lifting torque/torque (kNm)	193/50.8	125/35.8	Pressure on the soil surface (kg/cm ²)	0.45
Service weight (kg)	18,900	18,700	Maximum pulling force (kN)	80
Wheels	8WD	8WD	Rope diameter (mm)	18.5
Tire	Nokian 710/40–24.5	Nokian 710/45–26.5	Rope length (m)	500
Tire inflation pressure (kPa)	500	550		
Tracks	Clark tracks HX–24–75	Clark tracks HX–26–75	Maximum speed (km/h)	4.0
Operators age (years)	42	38	Operators are the same	
Operators experience (years)	7	18		

a winch-assist in the Control stand because the slope was not steep (26.7%) and enabled safe traffic (Table 1).

2.3 Measurement process and devices

We conducted the measurements between October 10 and 15, 2022, immediately after the harvesting machinery left the forest stands, and it was safe to begin measuring. During fieldwork, no precipitation occurred, and temperature ranged between 7 and 15°C. Forest stands were selected based on their similarity in soils, slopes, tree species mix, tree spatial distribution, other natural conditions, and proximity (Table 1; Figure 2). Sample plots were established on particular forwarding trails. The sample plot size was 10% of the harvested area in stands up to 50,000 m² or 5% in stands where the harvested area was larger than 50,000 m² (Allman et al., 2015). Plots were squares, with a side of 20 × 20 m. The positioning of the sample plots was calculated according to Scheer and Sedmák (2010) (Equation 1):

$$s = 100 \times \sqrt{\frac{P}{n}} \quad (1)$$

s, sample plot distance (m)

P, harvested area (ha)

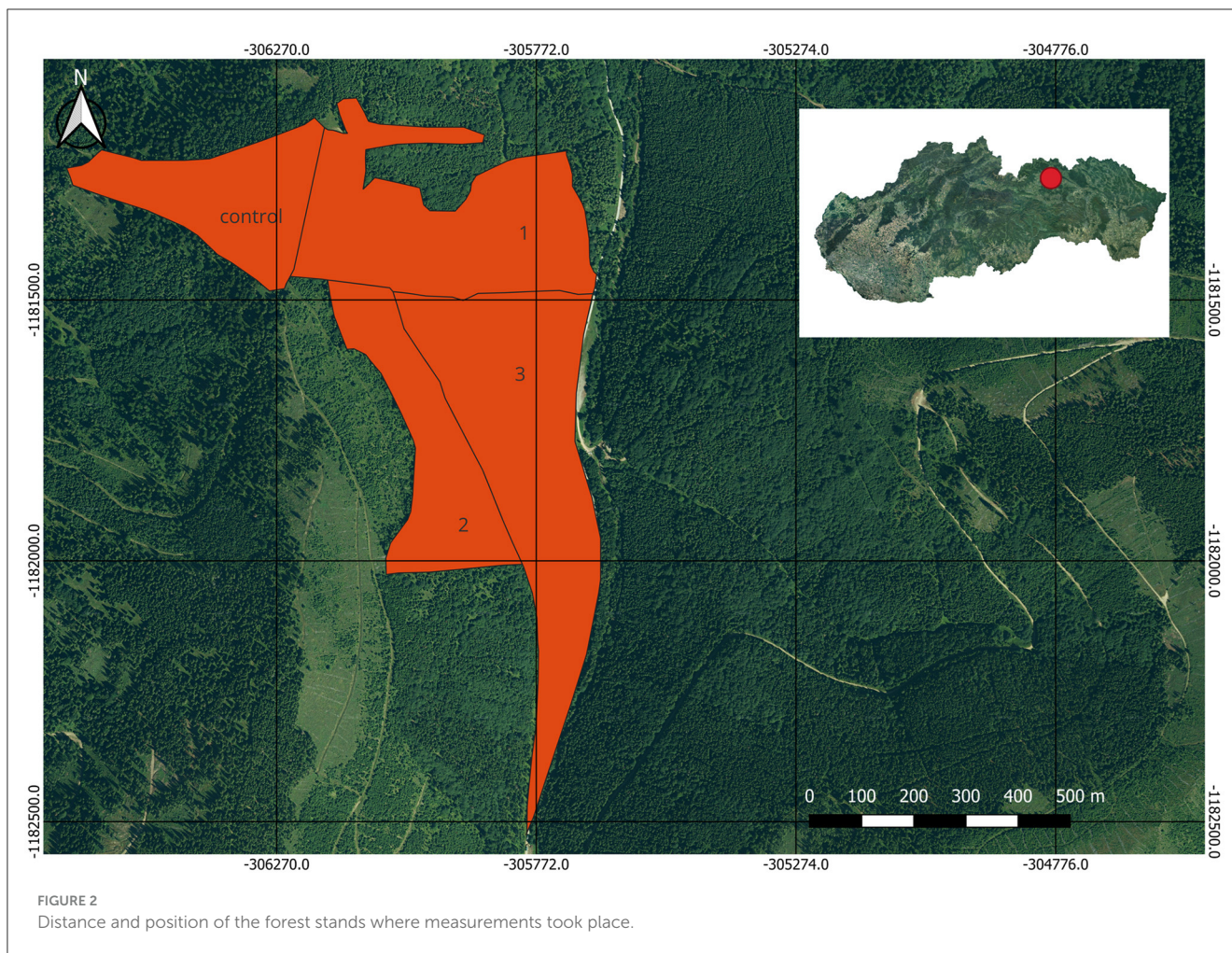
n, number of sample plots

Measurement locations were established on the opposite sides of each plot (Figure 3). In each measurement location, we (i) determined the longitudinal slope with a True Pulse 360B (Laser Tech Inc., Colorado, USA) laser range finder (in °); (ii) evaluated the presence and depth of slash on the trail (cm), (iii) measured the forwarding trail profile (cm) and maximal rut depth, (iv) collected soil samples from the localities stand, rut and in the middle of the trail to determine the bulk density (BD) of soil (g cm⁻³) and soil moisture content (%), (v) measured soil penetration resistance (PR) in MPa and penetration depth (cm).

To measure the average forwarding trail profile depth (cm), we placed a 4 m ranging rod perpendicularly on the trail. We measured the trail profile with a tape measure from the soil surface to the lower side of the rod, each 20 cm of the length of the ranging rod (Jankovský et al., 2019). Maximal rut depth (cm) was expressed as the largest value measured in the ruts of the forwarding trail. The intensity of disturbance via rut creation was classified according to the rut disturbance classification scale, shown in Table 3. Soil samples were collected into 100 cm³ Eijkelkamp sampling cylinders (Giesbeek, Netherlands). Immediately after sampling, the cylinders were sealed in a plastic bag for subsequent BD and moisture content laboratory analyses. BD of soil and moisture content (Equation 2) was determined in a dried state from samples dried for 24 h at 105°C (Allman et al., 2015).

$$\text{Moisture content (\%)} = \left(\frac{\text{raw sample (g)} - \text{dried sample (g)}}{\text{dried sample (g)}} \right) \times 100 \quad (2)$$

Penetration resistance and penetration depth of soil were measured in the exact locations of stand, rut and middle by an Eijkelkamp Penetrologger (Giesbeek, Netherlands), equipped with an 80 cm extension rod and a 30° cone screwed onto the bottom end of the rod. The cone had a nominal diameter of 11.28 mm and a base area of 1 cm². Thirty-nine sample plots containing 78 measurement locations were established in total. From the plots, 234 BD and moisture content samples were collected, and 234 PR measurements were carried out. Penetration resistance and penetration depth were measured by an Eijkelkamp Penetrologger, which recorded values per 1 cm of penetration in the range between 0 and 80 cm, based on the depth to which we were able to push the penetrometer which resulted in a higher number of values for these variables.



2.4 Statistical analyses

Data were processed in Tibco Statistica 14.0.1 and IBM SPSS statistical software. Shapiro-Wilk and Levene's tests were used to test the normality of data distribution and the homogeneity of variance for BD, moisture content, PR, and penetration depth.

One-way analysis of variance (ANOVA) was used to compare the differences between the forest stands (Duncan's test) and measurement locations (Tukey's test) for BD, soil moisture, PR and penetration depth, as well as to compare the differences between the mean and maximal rut depths formed in the observed forest stands. Linear mixed effects models (LMMs) were used to identify the effects of a particular forest stand (random effect) and measurement location (fixed effect) on the variability of BD, soil moisture, PR, and penetration depth, as well as to identify the effects of the presence of traction winches, slash in the forwarding trails, slope, and soil moisture content as fixed effects on BD, PR, and maximal rut depth in forwarding trails as dependent variables. Furthermore, we used LMMs to observe the relationships between PR and BD and the thickness of the slash cover and PR and BD on data from the rut location. We hypothesize that CTL machines cause significantly higher H_1 soil compaction in the ruts, expressed as BD; H_2 penetration resistances (PR) in the ruts of the forwarding trails; H_3 rut depths in forwarding trails

(cm), compared to CTL machines deployed in standard conditions without winch assistance. The hypotheses H_1 , H_2 , and H_3 were tested on a 5% α level of significance, i.e., they were rejected, and the alternative hypothesis H_A "no significant differences between the variables were confirmed" was accepted.

3 Results

Shapiro-Wilk's test showed that data were not normally distributed at the particular measurement locations.

3.1 Bulk density and soil moisture

From the mean dried BD values, it can be seen that machine traffic increased BD in the rut by 13.42 (no. 2)–22.35% (Control), representing the most substantial BD increase from all observed forest stands. In contrast, BD was lower in the middle (0.77–0.86 $\text{g}\cdot\text{cm}^{-3}$) than in the stand (0.82–0.90 $\text{g}\cdot\text{cm}^{-3}$), probably due to the soil displacement into the trail's center caused by machine traffic. The lowest BD values in the ruts were recorded in stands no. 2 (0.93 $\text{g}\cdot\text{cm}^{-3}$) and Control (1.04 $\text{g}\cdot\text{cm}^{-3}$), where the lowest amount of timber was harvested (221.79 and 109.34 m^3 ,

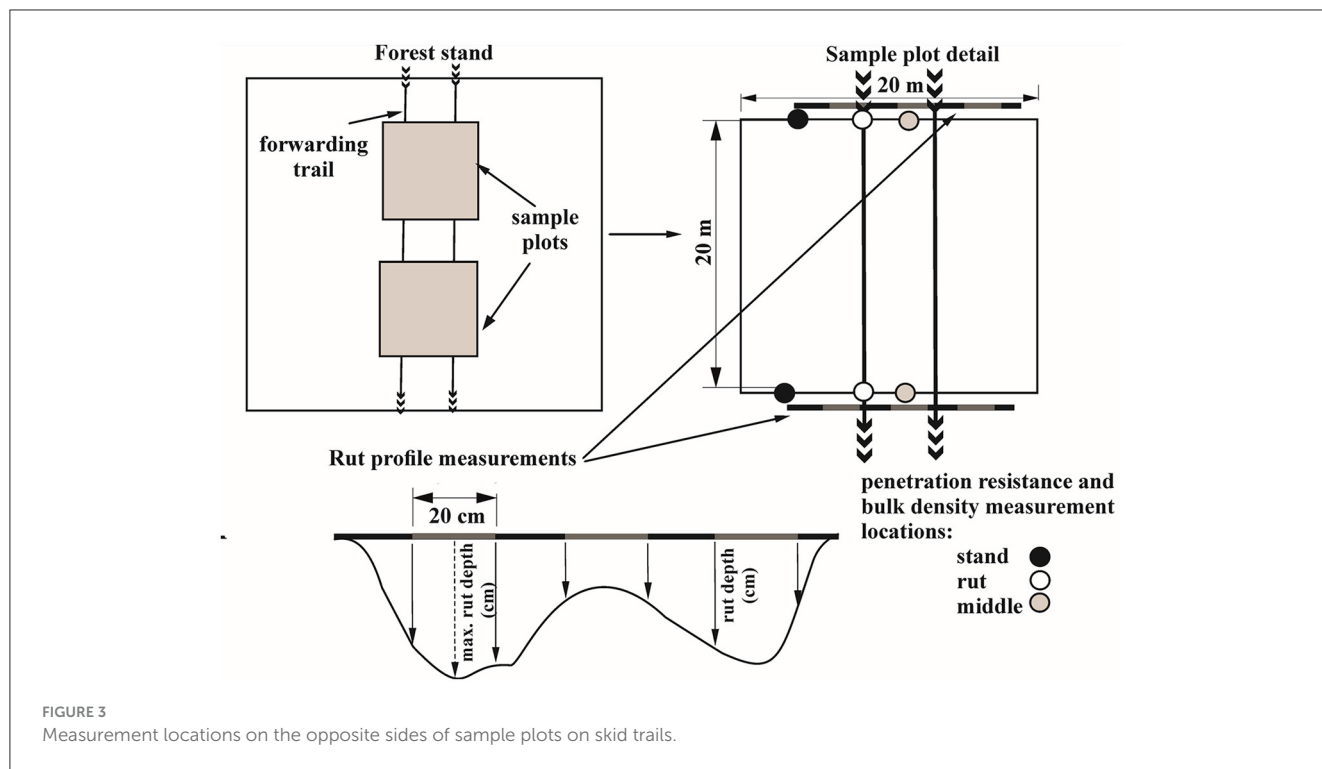


FIGURE 3 Measurement locations on the opposite sides of sample plots on skid trails.

TABLE 3 Rut disturbance classification scale used to observe soil disturbance levels.

Level of soil disturbance	Rut depth (cm)	Disturbance characteristic
No disturbance	0	Soil with unimpaired vegetation and top humus layer.
Very low disturbance	0	Humus layer partially removed (<50%) or mixed with humus soil horizon. Soil is without any visible signs of compression. Soil cover damaged.
Low disturbance	<7.9	The humus layer removed. Humus horizon partially (<50%) removed. Soil compressed by machinery passage in low precipitation conditions. Bearing capacity unimpaired.
Moderate disturbance	8–15.9	Top soil horizon removed partially (50–80%). Soil compressed, water permeability decreased significantly. Visible lateral soil displacement near ruts.
Severe disturbance	16–25.9	Mineral soil partially removed. Soil compressed or destructed by the tires, laterally displaced. Low to very low water permeability of soil. Water stays on the surface of ruts.
Very severe disturbance	≥26	Mineral horizon uncovered. Very deep ruts, soil in ruts impermeable to water

respectively), resulting in smaller passages of forest operations over the trails. The highest values of moisture content (%) were recorded at the rut location in all forest stands, except for stand

no. 3, and fluctuated in the range of 44.24 (no. 1)–54.29 (no. 2) % (Table 4). The machine passage and the resulting change in the microrelief in the trails caused higher moisture content (%) in the ruts. One-way ANOVA (Duncan’s test) did not confirm significant differences in BD between the forest stands (no. 1, 2, 3, Control) at the exact measurement locations, i.e., stand ($F = 0.638; p = 0.593$), rut ($F = 2.373; p = 0.077$), and middle ($F = 1.553; p = 0.208$). The results showed that the conditions and the intensity of soil disturbance in the ruts and middle locations were similar between the forest stands. The differences between locations (Tukey’s test) were not significant only in the case of the Control stand ($F = 2.587; p = 0.09$) (Table 4). Regarding moisture content, the differences between the four observed forest stands were insignificant only at the rut location ($F = 2.503; p = 0.07$). Moreover, in the case of stand no. 3, the differences between the stand, rut, and middle measurement locations were insignificant ($F = 14.816; p = 0.00$) (Table 4).

Linear mixed model of the effects of measurement locations (stand, rut, middle) as fixed effects, and the forest stand no. (random effect) on BD showed that 18.9% ($R^2_m = 0.189$) of the BD variability was affected by measurement location (marginal effect) and 22.4% ($R^2_c = 0.224$) by fixed and random effects (conditional effect). Only about 3.5% of the variability could be attributed to random effects. Measurement location as the fixed effects significantly affected BD ($F = 28.297; p < 0.05$). In the case of moisture content as a dependent variable, the R^2_m was 0.067, and R^2_c was 0.202, and the random effects (stand no.) explained more variability of the moisture content (13.5%) than fixed effects (6.7%) and had (fixed effect) a significant relationship with moisture content ($F = 9.749; p < 0.05$).

We then observed the relationship between the BD in ruts and the usage of traction winches, slope category, and moisture content

TABLE 4 Mean bulk density and soil moisture values and their differences (%) analyzed through Tukey's test between measurement locations and observed stand no. (Duncan's test).

	Stand (S)		Rut (R)		Middle (M)		
Stand no.	Ø BD ^a ± SD ^b	Δ ^c S→R (%)	Ø BD ± SD	Δ R→M (%)	Ø BD ± SD	Δ S→M (%)	Tukey ^e ⇄
1	0.86 ± 0.10	+22.09	1.05 ± 0.20	-18.1	0.86 ± 0.15	0	S-R; R-M
2	0.82 ± 0.12	+13.42	0.93 ± 0.22	-17.20	0.77 ± 0.14	-6.10	R-M
3	0.90 ± 0.12	+16.67	1.05 ± 0.17	-19.05	0.85 ± 0.13	-5.56	S-R; R-M
Control	0.85 ± 0.38	+22.35	1.04 ± 0.14	-20.19	0.83 ± 0.11	-2.35	<i>p</i> > 0.05
Duncan ^f ↓	<i>p</i> > 0.05	-	<i>p</i> > 0.05	-	<i>p</i> > 0.05	-	-
Stand no.	Ø MC ± SD	Δ S→R (%)	Ø MC ± SD	Δ R→M (%)	Ø MC ^d ± SD	Δ S→M (%)	Tukey ^e ⇄
1	34.85 ± 11.14	+29.94	44.24 ± 14.90	-8.97	40.27 ± 13.10	+15.55	<i>p</i> > 0.05
2	44.52 ± 9.73	+21.95	54.29 ± 25.39	-4.57	51.81 ± 12.86	+16.38	<i>p</i> > 0.05
3	28.82 ± 8.10	+40.91	40.61 ± 8.24	+7.46	43.64 ± 11.82	+51.42	S-R; S-M
Control	46.51 ± 19.50	+3.99	48.37 ± 14.50	-4.32	46.28 ± 7.95	-0.50	<i>p</i> > 0.05
Duncan ^f ↓	1-2; 1-Con.; 2-3; 3-Con.	-	<i>p</i> > 0.05	-	1-2	-	-

^a)BD, bulk density (g.cm⁻³); ^b)SD, standard deviation; ^c)Δ, value difference (%); bold typeface indicates the significance of differences (*p* ≤ 0.05) between locations; ^d)MC, moisture content (%); ^e)Tukey, between-group comparisons of differences between the measurement locations within each particular forest stand; ^f)Duncan, between-group comparisons of differences of the same measurement location between particular forest stands.

category as fixed effects and the stand no. as random effects via an LMM (Table 5). The analysis showed that 73.2% ($R^2_m = 0.732$) of rut BD variability was explained by fixed effects and 75.7% ($R^2_c = 0.757$) by the combination of fixed and random effects (Table 5). The random effect (stand no.) contributed only 2.5% to explaining rut BD variability, although only moisture content significantly affected the dependent variable ($F = 49.164$; $p < 0.05$).

3.2 Penetration resistance and penetration depth

Penetration resistance increased in the rut location, from 4.88 (no. 1) to 26.8% (Control). Table 6 shows that the increase in penetration resistances between the rut and stand locations was largest at the Control stand. Compared to the stand location (2.50–3.10 MPa), the PR in the middle of the trails (2.57–3.06 MPa) varied in some cases, it increased by 8 (Control) to 17 % (no. 2), while in other cases, it decreased by 1.29 (no. 3)–10.45 % (no. 1). There was a decrease of penetration depth (cm) 1.96 (no. 3)–10.95% (no. 2) in ruts (18.98–19.77 cm) compared to the stand location (19.36–22.20 cm) because the cone's ability to penetrate the soil was decreased as a result of machinery traffic. Interestingly, in stand no. 1, the penetration depth (cm) increased by 33.48% (4.8 cm) in the ruts compared to the stand location (Table 6). At the middle location, penetration depth (cm) increased by 0.26 (no. 3)–17.83% (no. 1), compared to the stand location, except for stand no. 2, where we observed a decrease in penetration depth by 7.79%. One-way ANOVA (Duncan's test) confirmed that the differences between the forest stands (no. 1, 2, 3, Control) were significant on the stand ($F = 19.29$; $p = 0.00$), rut ($F = 7.759$; $p = 0.00$), and middle ($F = 54.367$; $p = 0.00$) measurement locations. The differences between the stand, rut, and middle measurement locations (Tukey's test) were also significant in all forest stands

($p < 0.05$). In the case of penetration depth (cm), Duncan's test confirmed that for the same measurement locations, the differences between forest stands (no. 1, 2, 3, Control) were significant ($p < 0.05$), except for the rut location ($F = 1.368$; $p = 0.25$). Tukey's test showed that the differences between the stand, rut, and middle measurement locations were significant in all stands except for stand no. 3 ($F = 0.189$; $p = 0.828$) (Table 6).

Linear mixed modeling between PR as the dependent variable, measurement location as fixed effects, and stand no. as random effects showed that only 0.7% ($R^2_m = 0.007$) of PR variability were affected by measurement location, and further 4.3% were affected by fixed and random effects ($R^2_c = 0.05$) and the relationship was insignificant ($F = 0.446$; $p = 0.64$). We achieved similar results when penetration depth (cm) was the dependent variable ($R^2_m = 0.005$, $R^2_c = 0.012$). The LMM between the rut PR, stand no. (random effect), and the usage of traction winch ($F = 2.222$, $p = 0.164$), presence of slash in the ruts ($F = 3.134$, $p = 0.081$), slope category ($F = 0.913$, $p = 0.464$), and moisture content category ($F = 1.704$, $p = 0.160$) (fixed effects) showed no significant relationship (Table 5). Another LMM did not confirm a significant relationship between PR and BD ($F = 0.901$; $p = 0.346$; $R^2_m = 0.012$).

3.3 Slash and rut depth

Slash (treetops and limbs) were placed on the trails by the operator during the harvesting process to minimize the effects of the machine on the soil surface. From measured data, it can be seen that the share of measurements without slash placed on the trails was relatively high, ranging from 67 to 95% (Table 7). Consequently, LMM in the ruts of the forwarding trails did not confirm a significant relationship ($F = 0.264$; $p = 0.769$) between the slash thickness category (cm) and BD ($R^2_m = 0.007$; R^2_c

TABLE 5 Results of testing the fixed effects (traction winch usage, slash cover presence, slope category, moisture content category) for rut bulk density, rut penetration resistance or maximal rut depth, respectively, as dependent variables.

Source	Numerator df	Denominator df	F	Sig.
Tests of fixed effects (bulk density g cm⁻³)				
Intercept	1	8.212	214.116	<0.001
Traction winch	1	4.323	0.280	0.623
Slash cover	1	67.102	2.056	0.156
Slope category (%)	1	6.461	0.018	0.898
Moisture content category (%)	1	64.036	149.415	<0.001
Tests of fixed effects (penetration resistance MPa)				
Intercept	1	5.958	226.039	<0.001
Traction winch	1	11.217	2.222	0.164
Slash cover	1	66.962	3.134	0.081
Slope category (%)	4	50.229	0.913	0.464
Moisture content category (%)	4	65.426	1.704	0.160
Tests of fixed effects (maximal rut depth cm)				
Intercept	1	3.850	181.248	<0.001
Traction winch	1	7.127	9.091	0.019
Slash cover	1	66.672	1.231	0.271
Slope category (%)	4	61.635	1.724	0.156
Moisture content category (%)	4	65.944	0.379	0.823

= 0.094). In the case of PR and slash thickness category (cm), the relationship was significant ($F = 3.819$; $p = 0.027$), though the explanatory power was weak R^2_m (0.090) and R^2_c (0.094). Insignificant or weak relationships between slash cover and BD or PR were caused by the small amount of slash cover over the ruts of the forwarding trails, which ranged between 4.17 and 29.16%. An inadequate layer of slash on the trail or its absence was mainly caused by the harvesting operations being carried out in young, 30- to 40-year-old stands. The thin branches and the low harvesting concentrations did not permit covering the trails with sufficient slash.

Mean forwarding trail profile depth in particular forest stands varied between 4.63 and 7.28 cm, whereas maximum rut depth ranged between 10.86 and 17.25 cm (Table 8). The deepest average trail profile and maximum rut depth were recorded in the Control stand.

The most frequent intensity class of forwarding trail disturbance was a moderately strong disturbance, with a maximum rut depth between 8 and 15.9 cm (Table 8). This level of disturbance represented 77.27 (stand no. 3) to 80% (stand no. 2) of the trails in

the stands. In the Control stand, severe disturbance was the most frequent, representing 50 % of disturbances, with a maximum rut depth between 16 and 25.9 cm. One-way ANOVA (Duncan's test) confirmed significant differences between stands. In the case of average rut depth (cm) ($F = 7.21$; $p = 0.00$) and maximum rut depth ($F = 7.48$; $p = 0.00$), the differences were significant in the Control stand, which differed significantly from all other forest stands (nos. 1, 2, 3).

The LMM for maximum rut depth (dependent variable), traction winch usage, slash cover, slope category, and moisture content as fixed effects, and stand no. as a random effect showed a significant relationship between the traction winch usage ($F = 9.091$; $p = 0.019$) (Table 5). In the case of other variables, i.e., slash cover ($F = 1.231$; $p = 0.271$), slope category ($F = 1.724$; $p = 0.156$), and moisture content category ($F = 0.379$; $p = 0.823$), the relationships were insignificant.

4 Discussion

Soil disturbance caused by deploying harvesters assisted by mobile traction or other winches in thinnings is not the subject of many studies. Multiple studies research the safety, tensile forces, slope range, efficiency, and productivity of this technology on steep slopes (Holzfeind et al., 2018; Holzleitner et al., 2018; Jodłowski and Kalinowski, 2018; Mologni et al., 2018, 2021; Visser and Stampfer, 2015). Literature also states that using winches to secure ground-based harvesting machines can contribute to soil disturbance reduction due to the ability of the tethered system to avoid sliding, slipping, and digging farther into the soil (Cavalli and Amishev, 2019; Holzleitner et al., 2018). The winch can support the braking and traction of the harvesting machine, thus distributing the forces and minimizing the wheel slippage of the machine when navigating challenging terrains. Severe soil disturbance is reduced because wheel slippage decreases to <20%, making it easier to develop logging trails systematically. However, these are theoretical statements without direct measurements of the effects of this technology on soil disturbance.

4.1 Bulk density

Garren et al. (2019) studied the changes in soil parameters when mobile traction winches are used in steep slopes (27–38°, i.e., 51–78%), dividing the slopes into three categories (first: 27–31°, i.e., 51–60%; second: 31–35°, i.e., 60–70%; third: 35–38°, i.e., 70–78%). To compare, we chose the first slope category from the study by Garren et al. (2019). In that category, the bulk density in rut ranged from 1.4 to 1.58 g cm⁻³ and increased by 16% on average compared to stand locations. In our case, at 22–29.5° (40.4–56.6%) slopes, the bulk density in rut ranged between 0.93 and 1.05 g cm⁻³ and increased by 13.42 (stand no. 2)–22.09% (stand no. 3). At lower slopes (14.9° i.e., 26.6% stand Control), higher bulk density was not observed in the rut (1.04 g cm⁻³) compared to other stands, though the increase was more substantial (22.35%) than in stands with higher slopes. The LMM did not confirm a statistically significant effect of slope on the BD ($p > 0.05$). To our knowledge, very few studies focus on the problem of

TABLE 6 Mean penetration resistance and penetration depth values and their differences (%) compared through Tukey’s test between measurement locations and observed stand no. (Duncan’s test).

Stand no.	Stand (S)		Rut (R)		Middle (M)		Tukey ^{e)} ⇐
	Ø PR ^{a)} ± SD ^{b)}	Δ ^{c)} S→R (%)	Ø PR ^{d)} ± SD	Δ R→M (%)	Ø PR ^{d)} ± SD	Δ S→M (%)	
1	2.87 ± 1.58	+4.88	3.01 ± 1.50	-14.62	2.57 ± 1.50	-10.45	R-M; S-M
2	3 ± 1.38	+13	3.39 ± 1.43	+3.54	3.51 ± 1.70	+17	S-R; S-M
3	3.10 ± 1.28	+7.42	3.33 ± 1.80	-8.11	3.06 ± 1.68	-1.29	S-R; R-M
Control	2.50 ± 0.96	+26.8	3.17 ± 1.79	-14.83	2.70 ± 1.39	+ 8	S-R; R-M
Duncan ^{f)} ↓	1-3; 1-Con.; 2-Con.; 3-Con.	-	1-2; 1-3; 2-Con.	-	1-2; 1-3; 2-Con.; 2-3; 3-Con.	-	-
Stand no.	Ø PD ± SD	Δ S→R (%)	Ø PD ± SD	Δ ^{d)} R→M (%)	Ø PD ± SD	Δ S→M (%)	Tukey ^{e)} ⇐
1	18.79 ± 13.98	+33.48	25.08 ± 18.32	-11.72	22.14 ± 15.72	+17.83	S-R; R-M; S-M
2	22.20 ± 18.27	-10.95	19.77 ± 17.39	+3.54	20.47 ± 15.38	-7.79	S-R
3	19.36 ± 13.19	-1.96	18.98 ± 14.11	+2.27	19.41 ± 15.90	+0.26	<i>p</i> > 0.05
Control	22.50 ± 18.04	-9.11	20.45 ± 15.87	+14.57	23.43 ± 16.83	+4.13	R-M
Duncan ^{f)} ↓	1-3; 2-3; 3-Con.	-	<i>p</i> > 0.05	-	1-2; 1-3; 2-Con.; 3-Con.	-	-

^{a)}PR, penetration resistance; ^{b)}SD, standard deviation; ^{c)}Δ, value difference; bold typeface indicates the significance of differences (*p* ≤ 0.05) between locations; ^{d)}PD, penetration depth; ^{e)}Tukey, between-group comparisons of differences between the measurement locations within each particular forest stand; ^{f)}Duncan, between-group comparisons of differences of the same measurement location between particular forest stands.

TABLE 7 The cover of trails with slash and its thickness in 10 cm intervals recorded at particular measurement locations.

	1		2		3		Control	
	Rut	Middle	Rut	Middle	Rut	Middle	Rut	Middle
No slash (<i>n</i> /%) ^{a)}	16/66.67	3/12.5	19/95	14/70	15/68.18	6/27.27	10/83.33	5/41.67
1–10 cm (<i>n</i> /%)	7/29.16	-	-	-	5/22.73	1/4.54	2/16.67	-
11–20 cm (<i>n</i> /%)	1/4.17	7/29.17	1/5	2/10	2/9.09	8/36.37	-	4/33.33
21–30 cm (<i>n</i> /%)	-	12/50	-	2/10	-	7/31.82	-	2/16.67
31–40 cm (<i>n</i> /%)	-	2/8.33	-	2/10	-	-	-	1/8.33
Σ	24/100	24/100	20/100	20/100	22/100	22/100	12/100	12/100

^{a)}*n*/%, number of measurement places in a stand/percentage share.

using mobile traction winches combined with CTL machinery in thinnings and the soil disturbance caused by this harvesting system. However, we can use studies of non-assisted CTL machinery for comparisons. Malvar et al. (2017) indicate that mean BD at 0–5 cm depth ranges from 0.77 kg cm⁻³ at the stand area to 1.07 kg cm⁻³ at compacted rut area, and BD is between 14 and 28% higher in rut. This research was conducted on (47–53%, i.e., approximately 25.2–27.9°) slope. Allman et al. (2015) report an increase in soil bulk density from (0.82 to 1.12 g cm⁻³) in stand to (1.02 to 1.36 g cm⁻³) in rut, i.e., between 21 and 2% after CTL machine traffic. Labelle et al. (2019) indicate a pre-operation soil BD from 0.4 to 1.0 g·cm⁻³ and from 0.7 to 1.2 g cm⁻³ after machine traffic, representing an increase between 20 and 75%. Williamson and Neilsen (2000) report a BD increase of 0.17 g·cm⁻³ after machine traffic.

4.2 Penetration resistance

Penetration resistance increased by 4.8–26.8% in the rut, while the penetration depth decreased by 2–10%. The most substantial increase in PR (26.8%) was observed in stand Control, where the winch did not operate. However, according to Tukey’s test, the differences between the stand and rut locations were significant in all forest stands. Labelle et al. (2019) state that on forest or agricultural land, high soil PR may be problematic for root growth and values beyond 3.0 MPa are regarded as a threshold for interrupted root growth, thus marking severely disturbed soils. In our case, PR over 3.0 MPa was recorded even in undisturbed locations, although only in the case of stand no. 3. To compare, PR values in the rut ranged between 3.01 and 3.17 MPa. Labelle et al. (2019) concluded that while none of the pre-forwarding

TABLE 8 Mean and maximum rut depth and percentage share of trail disturbance classes in particular forest stands.

Stand	1.	2.	3.	Control
Mean rut depth \pm SD (cm)	5.08 \pm 1.1	5.59 \pm 1.1	4.63 \pm 1.4	7.28 \pm 3.0
Maximum rut depth \pm SD (cm)	12.92 \pm 3.2	13 \pm 3.1	10.86 \pm 3.3	17.25 \pm 5.9
Low disturbance \leq 7.9 cm (%)	4.16	0	13.64	0
Moderate disturbance 8–15.9 cm (%)	79.17	80	77.27	41.67
Severe disturbance 16–25.9 cm (%)	16.67	20	9.09	50
Very severe disturbance \geq 26 cm (%)	0	0	0	8.33

^{a)}SD, standard deviation.

measurement points exceeded the 3.0 MPa threshold, 10.7% of post-forwarding measurement points showed PR above 3.0 MPa, with about 80% of such values occurring in the rut. We presume that the higher PR values in the stand locations in our case were due to insufficient rainfall during August and September, as well as moisture deficit in lower soil layers. On the other hand, the LMM did not confirm a statistically significant relationship between the soil moisture content on the PR ($p > 0.05$), likely due to our use of determining the moisture content from samples taken from upper soil layers via a gravimetric method. In contrast, the PR values were recorded at depths up to 80 cm, where different moisture conditions can occur, which might have caused an increased PR when trying to penetrate the cone penetrometer into deeper soil layers. Cudzik et al. (2017) report even higher PR values. Their study showed that PR after CTL machine traffic increased by 220–308% compared to control measurements at the stand location. The penetration resistances measured ranged from 2.8 to even 4 MPa.

4.3 Rut depth and soil moisture

In their study, Garren et al. (2019) indicate that the maximum rut depth (cm) caused by the winch technology was 9.5 cm and in 39% of observations, the rut depth was 0 cm or no visible ruts and overall rutting was negligible. In our case, the maximum rut depth ranged between 10.86 and 17.25 cm. In more than one-quarter to one-fifth of observations where winch assistance was used, the soil disturbance reached a “moderately strong” category, while in the stand without a winch, the rutting reached a “severe disturbance” level most frequently, though the differences in rut depth (cm) were primarily insignificant. Visser and Spinelli (2023) state that on steeper slopes (30–40%, i.e., 16.7–21.8°), low soil disturbance and rut deeper than 15 cm covers only 2% of the observed surface after being trafficked by a two-axle skidder with winch assistance. In our case, ruts deeper than 15 cm were measured frequently, between 9 (stand no. 3) and 50% (Control) of measurement locations. Although traction-assist technology significantly reduces wheel

slippage, no mitigating effect of traction-assist technology on soil disturbance was observed. Cudzik et al. (2017) report a rut depth of up to 5 cm on 81% of trails in their study of CTL machines working in slopes between 8 and 12° (14–21.3%). Han et al. (2006) state that ruts are deeper for moist (medium and high moisture contents) than for drier soils. The high moisture content (%) contributes to the development of ruts that are significantly (13.8–35.3 cm) deeper than in the case of medium (8.2–12.0 cm) or low moisture contents (4.5–8.0 cm). In our case, the deepest ruts were recorded in the forest stand, where the CTL machines operated unassisted, as confirmed by the fact that the LMM showed a statistically significant effect of a traction winch being used ($p < 0.05$) on the maximum rut depth in the forwarding trails. Duncan’s test confirmed significant differences between the mean and maximum rut depth between the Control stand and stands no. 1, 2, and 3.

4.4 Study limitations

Forest harvesting in mountainous regions of the Carpathian mountain range happens in various technological conditions connected to machinery and their use, soil types, terrain configuration, and tree species being harvested. Therefore, large-scale studies are needed to cover the array of machines and their use in highly variable natural conditions. Future research should expand the use cases of traction winches supporting ground-based wheeled machinery and focus on repeated observations with control plots that reflect the variability of natural conditions. Different approaches to observing the soil disturbance complementary to the methods used in this study can also be used in the future.

Admittedly, our study has a limited scale. We could only perform control measurements in one comparable forest stand, while more would be preferable. Our inability to do so was caused by the fact that no suitable forest stands were being harvested by the land owner where the slope would be sufficient on the one hand, and occupational safety and health could be secured on the other since the operation of unassisted machinery in slopes over 40% slope was forbidden by the internal regulations of the land owner.

Nevertheless, even small-scale studies contribute to filling in the considerable knowledge gap on the environmental effects of this technological variant and providing practitioners with adequate information when considering what technology and machinery to deploy in their forests.

5 Conclusion

Based on our findings, we reached the following conclusions:

- In the case of BD, the winch-assisted machines did not cause a higher degree of compaction compared to unassisted machines. The LMM did not confirm a significant effect of traction winches on the BD ($p > 0.05$). Hypothesis H₁ was therefore rejected, and we can state that the two technology variants caused a similar degree of soil compaction.
- The most substantial increase in soil penetration resistance in the ruts compared to control locations (stand) was recorded

in the control stand. A significant PR increase compared to the Control stand was confirmed in the case of stands no. 2 and 3, while the LMM did not confirm a significant effect of the traction winch on PR in the rut of the forwarding trails ($p > 0.05$). Hypothesis H₂ was therefore rejected.

- The deepest ruts and most substantial mean forwarding trail profile depth were observed in the stand where CTL machines worked unassisted by traction winches. On the other hand, significant differences (Duncan's test) were confirmed between Control and stands no. 1, 2, and 3. The LMM confirmed a significant effect of traction winch on the maximum rut depth. Hypothesis H₃ was, therefore, confirmed.

Management recommendations and implications:

- The use of winch-assisted technologies in steep slopes did not cause additional soil compaction or increased penetration resistance compared to those slopes where CTL machinery can work unassisted.
- Using a traction winch causes a significantly smaller disturbance of the soil surface, as represented by the measurable depth of the ruts of the forwarding trails.
- Mobile traction winches are a viable technological adaptation that enables deploying ground-based harvesting in terrains where cable yarders would otherwise have to operate.

Data availability statement

The data that support the findings of this study are available from the corresponding author upon reasonable request.

Author contributions

MA: Writing – original draft, Writing – review & editing, Conceptualization, Data curation, Methodology, Software, Visualization. ZD: Writing – original draft, Writing – review & editing, Conceptualization, Formal analysis, Methodology, Visualization. MD: Writing – original draft, Writing – review & editing, Methodology, Software, Validation, Visualization. MJ: Writing – original draft, Writing – review

& editing, Conceptualization, Data curation, Formal analysis, Methodology. VJ: Writing – original draft, Writing – review & editing.

Funding

The author(s) declare financial support was received for the research, authorship, and/or publication of this article. Grant No. NAZV QK22020146 Guidelines for Water Management on Forest Transportation Networks supported this work.

Acknowledgments

We thank the Military forests and estates of the Slovak Republic, GOE, for enabling the measurements and supplying all data necessary for this study.

Conflict of interest

The authors declare that the research was conducted in the absence of any commercial or financial relationships that could be construed as a potential conflict of interest.

Publisher's note

All claims expressed in this article are solely those of the authors and do not necessarily represent those of their affiliated organizations, or those of the publisher, the editors and the reviewers. Any product that may be evaluated in this article, or claim that may be made by its manufacturer, is not guaranteed or endorsed by the publisher.

Supplementary material

The Supplementary Material for this article can be found online at: <https://www.frontiersin.org/articles/10.3389/ffgc.2024.1464140/full#supplementary-material>

References

- Allman, M., Jankovský, M., Messingerová, V., Allmanová, Z., and Ferenčík, M. (2015). Soil compaction of various Central European forest soils caused by traffic of forestry machines with various chassis. *For. Syst.* 24, e038–e038. doi: 10.5424/fs/2015243-07541
- Ares, A., Terry, T. A., Miller, R. E., Anderson, H. W., and Flaming, B. L. (2005). Ground-based forest harvesting effects on soil physical properties and douglas-fir growth. *Soil Sci. Soc. Am. J.* 69, 1822–1832. doi: 10.2136/sssaj2004.0331
- Blouin, V. M., Schmidt, M. G., Bulmer, C. E., and Krzic, M. (2008). Effects of compaction and water content on lodgepole pine seedling growth. *For. Ecol. Manag.* 255, 2444–2452. doi: 10.1016/j.foreco.2008.01.008
- Cambi, M., Certini, G., Neri, F., and Marchi, E. (2015). The impact of heavy traffic on forest soils: a review. *For. Ecol. Manag.* 338, 124–138. doi: 10.1016/j.foreco.2014.11.022
- Cambi, M., Hoshika, Y., Mariotti, B., Paoletti, E., Picchio, R., Venanzi, R., et al. (2017). Compaction by a forest machine affects soil quality and *Quercus robur* L. seedling performance in an experimental field. *For. Ecol. Manag.* 384, 406–414. doi: 10.1016/j.foreco.2016.10.045
- Cavalli, R. (2012). Prospects of research on cable logging. *Croat. J. Eng.* 33, 339–356. Available at: <https://hrcak.srce.hr/116850>
- Cavalli, R., and Amishev, D. (2019). Steep terrain forest operations – challenges, technology development, current implementation, and future opportunities. *Int. J. For. Eng.* 30, 175–181. doi: 10.1080/14942119.2019.1603030
- Cudzík, A., Brennenstul, M., Białczyk, W., and Czarnecki, J. (2017). Damage to soil and residual trees caused. *Croat. J. Eng.* 38, 83–95. Available at: <https://hrcak.srce.hr/174453>

- Etehad Abari, M., Majnounian, B., Malekian, A., and Jourgholami, M. (2017). Effects of forest harvesting on runoff and sediment characteristics in the Hyrcanian forests, northern Iran. *Eur. J. For. Res.* 136, 375–386. doi: 10.1007/s10342-017-1038-3
- Garren, A. M., Bolding, M. C., Aust, W. M., Moura, A. C., and Barrett, S. M. (2019). Soil Disturbance effects from tethered forwarding on steep slopes in Brazilian eucalyptus plantations. *Forests* 10:721. doi: 10.3390/f10090721
- Goutal, N., Keller, T., Défossez, P., and Ranger, J. (2013). Soil compaction due to heavy forest traffic: measurements and simulations using an analytical soil compaction model. *Ann. For. Sci.* 70, 545–556. doi: 10.1007/s13595-013-0276-x
- Green, P. Q., Chung, W., Leshchinsky, B., Belart, F., Sessions, J., Fitzgerald, S. A., et al. (2020). Insight into the productivity, cost and soil impacts of cable-assisted harvester-forwarder thinning in Western Oregon. *For. Sci.* 66, 82–96. doi: 10.1093/forsci/fxz049
- Han, H.-S., Page-Dumroese, D., Han, S.-K., and Tirocke, J. (2006). Effects of slash, machine passes, and soil moisture on penetration resistance in a cut-to-length harvesting. *Int. J. For. Eng.* 17, 11–24. doi: 10.1080/14942119.2006.10702532
- Holzfeind, T., Stampfer, K., and Holzleitner, F. (2018). Productivity, setup time and costs of a winch-assisted forwarder. *J. For. Res.* 23, 196–203. doi: 10.1080/13416979.2018.1483131
- Holzleitner, F., Kastner, M., Stampfer, K., Höller, N., and Kanzian, C. (2018). Monitoring cable tensile forces of winch-assist harvester and forwarder operations in steep terrain. *Forests* 9:53. doi: 10.3390/f9020053
- Horn, R., Vossbrink, J., and Becker, S. (2004). Modern forestry vehicles and their impacts on soil physical properties. *Soil Till. Res.* 79, 207–219. doi: 10.1016/j.still.2004.07.009
- Jankovský, M., Allman, M., Allmanová, Z., Ferenčík, M., and Vlčková, M. (2019). Changes of key soil parameters five years after forest harvesting suggest slow regeneration of disturbed soil. *J. Sustain. For.* 38, 369–380. doi: 10.1080/10549811.2018.1549500
- Jodłowski, K., and Kalinowski, M. (2018). Current possibilities of mechanised logging in mountain areas. *For. Res. Pap.* 79, 365–375. doi: 10.2478/frp-2018-0037
- Jourgholami, M., Soltanpour, S., Etehad Abari, M., and Zenner, E. K. (2014). Influence of slope on physical soil disturbance due to farm tractor forwarding in a Hyrcanian forest of northern Iran. *IForest Biogeosci. For.* 7:342. doi: 10.3832/ifer1141-007
- Labelle, E. R., Polorak, B. J., and Jaeger, D. (2019). The role of brush mats in mitigating machine-induced soil disturbances: an assessment using absolute and relative soil bulk density and penetration resistance. *Can. J. For. Res.* 49, 164–178. doi: 10.1139/cjfr-2018-0324
- Lang, A. J., Cristan, R., Aust, W. M., Bolding, M. C., Strahm, B. D., Vance, E. D., et al. (2016). Long-term effects of wet and dry site harvesting on soil physical properties mitigated by mechanical site preparation in coastal plain loblolly pine (*Pinus taeda*) plantations. *For. Ecol. Manag.* 359, 162–173. doi: 10.1016/j.foreco.2015.09.034
- Latterini, F., Dyderski, M. K., Horodecki, P., Venanzi, R., Picchio, R., and Jagodziński, A. M. (2024a). Evaluating small-scale harvesting disturbance to the forest soil in Mediterranean beech high forests. *Land Degrad. Dev.* 1–9. doi: 10.1002/ldr.5228
- Latterini, F., Horodecki, P., Dyderski, M. K., Scarfone, A., Venanzi, R., Picchio, R., et al. (2024b). Mediterranean beech forests: thinning and ground-based skidding are found to alter microarthropod biodiversity with no effect on litter decomposition rate. *For. Ecol. Manag.* 569:122160. doi: 10.1016/j.foreco.2024.122160
- Latterini, F., Venanzi, R., Picchio, R., and Jagodziński, A. M. (2023). Short-term physicochemical and biological impacts on soil after forest logging in Mediterranean broadleaf forests: 15 years of field studies summarised by a data synthesis under the meta-analytic framework. *For. Int. J. For. Res.* 96, 547–560. doi: 10.1093/forestry/cpac060
- Macri, G., Rossi, A. D., Papandrea, S., Micalizzi, F., Russo, D., and Settineri, G. (2017). Evaluation of soil compaction caused by passages of farm tractor in a forest in southern Italy. *Agron. Res.* 15, 478–489.
- Malvar, M. C., Silva, F. C., Prats, S. A., Vieira, D. C. S., Coelho, C. O. A., and Keizer, J. J. (2017). Short-term effects of post-fire salvage logging on runoff and soil erosion. *For. Ecol. Manag.* 400, 555–567. doi: 10.1016/j.foreco.2017.06.031
- Ministry of Agriculture and Rural Development of the Slovak Republic (2022). *Green Report*. Available at: <https://www.mpsr.sk/lesne-hospodarstvo/123> (accessed January 26, 2024).
- Mologni, O., Dyson, P., Amishev, D., Proto, A. R., Zimbalatti, G., Cavalli, R., et al. (2018). Tensile force monitoring on large winch-assist forwarders operating in British Columbia. *Croat. J. Eng.* 39, 193–204. Available at: <https://hrcak.srce.hr/204187>
- Mologni, O., Nance, E. D. T., Lyons, C. K., Marchi, L., Grigolato, S., Cavalli, R., et al. (2021). Cable tensile forces associated to winch design in tethered harvesting operations: a case study from the Pacific North West. *Forests* 12:827. doi: 10.3390/f12070827
- Najafi, A., and Solgi, A. (2010). Assessing site disturbance using two ground survey methods in a mountain forest. *Croat. J. For. Eng.* 31, 47–55. Available at: <https://hrcak.srce.hr/56927>
- Picchio, R., Mederski, P. S., and Tavankar, F. (2020). How and how much, do harvesting activities affect forest soil, regeneration and stands? *Curr. For. Rep.* 6, 115–128. doi: 10.1007/s40725-020-00113-8
- Raymond, K. (2010). Innovative harvesting solutions: a step change harvesting research programme. *N. Z. J. For.* 55, 4–9.
- Schad, P. (2016). “The International Soil Classification System WRB, Third Edition, 2014,” in *Novel Methods for Monitoring and Managing Land and Water Resources in Siberia*, eds. L. Mueller, A. K. Sheudshen, and F. Eulenstein (Cham: Springer International Publishing), 563–571.
- Scheer, L., and Sedmák, R. (2010). *Biometria (Biometry)*. Zvolen: Vydav. Tech. Univ. Vo Zvolene.
- Sohrabi, H., Jourgholami, M., and Labelle, E. R. (2022). The effect of forest floor on soil microbial and enzyme indices after forest harvesting operations in Hyrcanian deciduous forests. *Eur. J. For. Res.* 141, 1013–1027. doi: 10.1007/s10342-022-01486-0
- Solgi, A., Naghdi, R., Tsioras, P. A., and Nikooy, M. (2015). Soil compaction and porosity changes caused during the operation of Timberjack 450C Skidder in Northern Iran. *Croat. J. Eng.* 36, 217–225. Available at: <https://hrcak.srce.hr/151783>
- Sommerfeld, A., Rammer, W., Heurich, M., Hilmers, T., Müller, J., and Seidl, R. (2021). Do bark beetle outbreaks amplify or dampen future bark beetle disturbances in Central Europe? *J. Ecol.* 109, 737–749. doi: 10.1111/1365-2745.13502
- Stampfer, K., Visser, R., and Kanzian, C. (2006). Cable corridor installation times for European Yarders. *Int. J. For. Eng.* 17, 71–77. doi: 10.1080/14942119.2006.10702536
- Tavankar, F., Bonyad, A. E., Nikooy, M., Picchio, R., Venanzi, R., and Calienno, L. (2017). Damages to soil and tree species by cable-skidding in Caspian Forests of Iran. *For. Syst.* 26:11. doi: 10.5424/fs/2017261-09100
- Tsioras, P. A., Rottensteiner, C., and Stampfer, K. (2014). Wood harvesting accidents in the Austrian State Forest Enterprise 2000–2009. *Saf. Sci.* 62, 400–408. doi: 10.1016/j.ssci.2013.09.016
- Varol, T., Emir, T., Akgul, M., Ozel, H. B., Acar, H. H., and Cetin, M. (2020). Impacts of small-scale mechanized logging equipment on soil compaction in forests. *J. Soil Sci. Plant Nutr.* 20, 953–963. doi: 10.1007/s42729-020-00182-5
- Visser, R., and Stampfer, K. (2015). Expanding ground-based harvesting onto steep terrain: a review. *Croat. J. Eng.* 36, 321–331. Available at: <https://hrcak.srce.hr/151831>
- Visser, R. M., and Spinelli, R. (2023). Benefits and limitations of winch-assist technology for skidding operations. *Forests* 14:296. doi: 10.3390/f14020296
- Williamson, J. R., and Neilsen, W. A. (2000). The influence of forest site on rate and extent of soil compaction and profile disturbance of skid trails during ground-based harvesting. *Can. J. For. Res.* 30, 1196–1205. doi: 10.1139/x00-041