



## OPEN ACCESS

## EDITED BY

Julio Javier Diez Casero,  
University of Valladolid, Spain

## REVIEWED BY

Trudy Paap,  
University of Pretoria, South Africa  
Jane E. Stewart,  
Colorado State University, United States

## \*CORRESPONDENCE

Tod D. Ramsfield  
✉ tod.ramsfield@NRCan-RNCan.gc.ca

RECEIVED 23 February 2023

ACCEPTED 09 May 2023

PUBLISHED 06 June 2023

## CITATION

Ramsfield TD, Feau N, Tanguay P, Hamelin RC,  
Herath P and Bozic T (2023) First report of  
*Melampsora epitea* causing stem cankers on  
*Salix pentandra* in Alberta, Canada.  
*Front. For. Glob. Change* 6:1172889.  
doi: 10.3389/ffgc.2023.1172889

## COPYRIGHT

© 2023 Ramsfield, Feau, Tanguay, Hamelin,  
Herath and Bozic. This is an open-access  
article distributed under the terms of the  
[Creative Commons Attribution License \(CC BY\)](https://creativecommons.org/licenses/by/4.0/).  
The use, distribution or reproduction in other  
forums is permitted, provided the original  
author(s) and the copyright owner(s) are  
credited and that the original publication in this  
journal is cited, in accordance with accepted  
academic practice. No use, distribution or  
reproduction is permitted which does not  
comply with these terms.

# First report of *Melampsora epitea* causing stem cankers on *Salix pentandra* in Alberta, Canada

Tod D. Ramsfield<sup>1\*</sup>, Nicolas Feau<sup>2</sup>, Philippe Tanguay<sup>3</sup>,  
Richard C. Hamelin<sup>4</sup>, Padmini Herath<sup>4</sup> and Toso Bozic<sup>5</sup>

<sup>1</sup>Northern Forestry Centre, Natural Resources Canada, Canadian Forest Service, Edmonton, AB, Canada,

<sup>2</sup>Pacific Forestry Centre, Natural Resources Canada, Canadian Forest Service, Victoria, BC, Canada,

<sup>3</sup>Laurentian Forestry Centre, Natural Resources Canada, Canadian Forest Service, Quebec, QC, Canada,

<sup>4</sup>Forest Sciences Centre, Faculty of Forestry, University of British Columbia, Vancouver, BC, Canada,

<sup>5</sup>ATTS Group, Edmonton, AB, Canada

In June, 2021, laurel willow (*Salix pentandra*) near Slave Lake, Alberta, was found to be infected by a *Melampsora* sp. that produced bright yellow urediniospores in uredia that were present on catkins, leaves, and stems. All *Melampsora* species previously reported in Canada are recorded as infecting leaves; therefore, further investigation was undertaken to ascertain the identity of this pathogen. To assess the relationship between this specimen and other *Melampsora* spp. previously collected from Canada, samples of willow leaves infected by *Melampsora* spp. were sourced from mycological herbariums located at the Laurentian Forestry Centre (QFB) and the Northern Forestry Centre (CFB, WINF(M)). DNA sequence data from the internal transcribed spacer (ITS) ribosomal RNA region of the fresh specimen, herbarium specimens, and DNA sequence data deposited within GenBank, were used to conduct a phylogenetic analysis. Sequencing and BLAST analysis of the material from the sample resulted in a 99.3% sequence identity match to *Melampsora epitea* "Mel J" collected from *Larix laricina* in New York State. The ITS sequence from the herbarium sample WINF(M)7356 (described as *M. abieti-capraearum* from Manitoba) had 100.0% identity with the Alberta sample. Additionally, specimens WINF(M)11892 (*Melampsora* sp. from Manitoba) and CFB8931 (*Melampsora* sp. from the Yukon) had 99.0% sequence identity with the Alberta sample. From these results we applied the identity of *M. epitea* to the rust discovered in Slave Lake, AB. With the current emphasis on willows for bioenergy production in Canada, growers must remain vigilant for this pathogen and the damages it could cause to willow plantations.

## KEYWORDS

*Melampsora*, *Salix*, rust disease, willow health, canker

## Introduction

This study was initiated as a result of a public inquiry regarding *Salix pentandra* L. (laurel willow) infected by a rust pathogen in Alberta, Canada, in 2021. Laurel willow is native to Europe and Asia, although it has been introduced to Canada where its cold hardiness has facilitated its establishment (Farrar, 1995). The specimens that were received were subjected to further examination because uredinia were present in cankers found on stems, a symptom that is not listed in any of the descriptions of *Melampsora* spp., which infect willows in Western Canada, as outlined by Ziller (1974), leading to concerns that a new pathogen may have been introduced to Canada.

The taxonomy of rust pathogens infecting willows is complicated due to the morphological similarity of the uredinial states of *Melampsora* spp. on willows, resulting in

*Melampsora epitea* Thümen becoming a catch-all for *Melampsora* sp. infecting willow (Ziller, 1974). Recent studies based on morphology and ribosomal DNA sequences have revealed that *M. epitea* is a species complex (Smith et al., 2004; Bennett et al., 2011; Kenaley et al., 2014; Zhao et al., 2017). In total, 12–14 phylotypes were recognized in North America (Smith et al., 2004), and more recently, Zhao et al. (2017) have described 13 species based on specimens collected from East Asia. These groups are differentiated based on aecial hosts, subtle morphological differences in the urediniospores, uredinia and telia, and ribosomal DNA sequences (Smith et al., 2004; Bennett et al., 2011; Kenaley et al., 2014; Zhao et al., 2017). Morphology and host associations are important characters in making an identification, but within this group, this information must be supplemented with DNA sequence data to arrive at the best possible identification.

The objective of this study was to determine the identity of the *Melampsora* sp. causing disease on *S. pentandra* in Alberta to investigate its potential as a new introduction in Canada. This was achieved by comparing the ribosomal DNA sequence data from this specimen with the ribosomal DNA extracted from herbarium specimens collected from *Salix* spp. in Canada and ribosomal DNA sequence data present in GenBank.

## Materials and methods

### Collection information

The sample, which included infected catkins, leaves, and stems, was collected fresh from *Salix pentandra* growing on private property in the Slave Lake region of Alberta and received at the Northern Forestry Centre on 16 June 2021.

### Herbarium samples

Specimens were retrieved from the QFB herbarium at the Laurentian Forestry Centre (Quebec City, Canada) and the CFB and WIN(F) herbaria at the Northern Forestry Centre (Edmonton, Canada) based on the host and proximity to the collection site (Table 1).

### Morphology

Fresh urediniospores were mounted in water and the length ( $\mu\text{m}$ ) and width ( $\mu\text{m}$ ) of 10 urediniospores were measured under 400 $\times$  and 1,000 $\times$  magnification ( $n = 20$ ) using a Zeiss Axiophot compound microscope using differential interference contrast (Carl Zeiss AG, Jena, Germany). One-way analysis of variance ( $\alpha = 0.05$ ) was performed using Microsoft Excel to compare the size of urediniospores measured under 400 $\times$  and 1,000 $\times$  magnification. As there was no significant difference in the length or width of urediniospores observed under 400 $\times$  and 1,000 $\times$  magnification (length  $F_{1,18} = 0.04$ ,  $p = 0.839$ ; width  $F_{1,18} = 2.48$ ,  $p = 0.133$ ), urediniospore size was calculated based on the pooled sample ( $n = 20$ ).

To compare urediniospore size between uredia present on catkins, stems, and leaves, a total of 30 urediniospores from each

tissue type ( $n = 90$ ) from specimen CFB 22329 were mounted in water, and the urediniospore length ( $\mu\text{m}$ ) and width ( $\mu\text{m}$ ) were measured under 400 $\times$  magnification using a Zeiss Axiophot compound microscope (Carl Zeiss AG, Jena, Germany). One-way analysis of variance ( $\alpha = 0.05$ ) was performed using Microsoft Excel to compare the size of urediniospores from uredia present in these different tissues. As there was no significant difference in the length or width of urediniospores collected from catkins, stems, or leaves (length  $F_{2,87} = 1.24$ ,  $p = 0.294$ ; width  $F_{2,87} = 2.19$ ,  $p = 0.119$ ), the size of urediniospore was calculated based on the pooled sample ( $n = 90$ ).

### DNA extraction: willow stems and seed catkins, herbarium samples

Urediniospores were collected from both fresh samples of willow stem and seed catkins and also herbarium samples of willow leaves. Plant materials were examined under a dissecting microscope, and urediniospores were aseptically harvested into 2 ml tubes with two 3.2 mm diameter stainless steel beads per tube. Due to the difficulty in harvesting from herbarium leaf samples, urediniospores were collected along with minute amounts of leaf, taking every care to minimize leaf material (Table 1). Afterward, the urediniospore samples were ground to a fine powder using the MM 300 TissueLyser (Retsch<sup>®</sup>, PA, USA) at 30 Hz for 2 min. The total genomic DNA of all urediniospore samples was extracted using the Qiagen DNeasy Plant mini kit (Qiagen, CA, USA) according to the manufacturer's instructions. DNA concentration of samples was measured using the Nanodrop ND-1000 spectrophotometer (ver. 3.8; Thermo Fisher Scientific Inc., Ottawa, ON, Canada).

### Polymerase chain reaction (PCR) assay

For species identification, the ITS region of the ribosomal DNA was amplified by PCR using the universal fungal primers ITS1F (5'-CTTGGTCATTTAGAGGAAGTAA-3'; Gardes and Bruns, 1993)/ITS4 (5'-TCCTCCGCTTATTGATATGC-3'; White et al., 1990) following published protocols (White et al., 1990). Each PCR reaction (25  $\mu\text{l}$  total volume) contained 1X buffer (Invitrogen, Carlsbad, CA, USA), 1.5 mM  $\text{MgCl}_2$  (Invitrogen, Carlsbad, CA, USA), 0.2 mM each dNTP (Invitrogen, Carlsbad, CA, USA), 0.5 U Platinum Taq polymerase (Invitrogen, Carlsbad, CA, USA), each primer (forward and reverse) at 1  $\mu\text{M}$ , and 2  $\mu\text{l}$  of template DNA. The PCR protocol was performed in a Bio-Rad T100<sup>™</sup> Thermal Cycler (Hercules, CA, USA) and included an initial denaturation step at 94 $^\circ\text{C}$  for 3 min. This was followed by 35 cycles of denaturation (30 s at 94 $^\circ\text{C}$ ), annealing (30 s at 55 $^\circ\text{C}$ ), extension (1 min at 72 $^\circ\text{C}$ ), and final extension at 72 $^\circ\text{C}$  for 10 min.

The PCR products were mixed with safe green dye (Applied Biological Materials, Canada) at a 1:5 ratio and were analyzed by gel electrophoresis using 1% agarose in 1X TBE (10X: Tris base 108 g, Boric acid 55 g, and EDTA 7.5 g in 1 L of distilled water). The PCR products were visualized using the Prepone Sapphire Blue LED Illuminator system (Embi Tec, CA, USA). Subsequently, the PCR products were sent for purification and Sanger sequencing to

TABLE 1 Herbarium specimens examined in this study.

Herbarium number	Alternative herbarium	Species as identified	Host	Location	Collected by	Determined by	Date	GenBank accession
WINF(M) 10956	DAOM 91232	<i>Melampsora epitea</i>	<i>Salix arctica</i>	Ellesmere Island	D.B.O. Savil	D.B.O Savil	24 July 1962	OQ076903
WINF(M) 3521		<i>Melampsora epitea</i>	<i>Salix lasiandra</i>	Honeymoon Bay, Vancouver Island, British Columbia	W.G. Ziller	W.G. Ziller	17 June 1957	OQ076902
WINF(M) 3522		<i>Melampsora epitea</i>	<i>Salix</i> sp.	Dawson, Yukon	J. Holms	W.G. Ziller	17 August 1961	OQ076909
WINF(M) 11892		<i>Melampsora</i> sp.	<i>Salix</i> sp.	Braintree, Manitoba	B. Sutherland		25 June 1969	OQ076905
CFB 4785		<i>Melampsora epitea</i>	<i>Salix</i> sp.	5 Mi. N. of Grouard, Alberta	G.J. Smith	R.J. Bourchier	7 September 1963	OQ076908
CFB 8931		<i>Melampsora</i> sp.	<i>Salix</i> sp.	Ross River, Yukon	J. Susut	Y. Hiratsuka	2 July 1969	OQ076907
WINF(M) 4979		<i>Melampsora bigelowi</i>	<i>Salix</i> sp.	Mile 10.5, Dore Lake Road, Saskatchewan	C. Rentz		9 August 1966	OQ076910
WINF(M) 7356		<i>Melampsora abietis-capraearum</i>	<i>Salix</i> sp.	Devils Lake, Manitoba	D. Shepherd		12 July 1967	OQ076904
QFB 11072		<i>Melampsora paradoxa</i>	<i>Salix</i> sp.	Mont Otish, Ungava, Quebec	R. Pomerleau	R. Pomerleau	August 1949	OQ076912
QFB 18297		<i>Melampsora paradoxa</i>	<i>Salix bebbiana</i>	Chapeau de paille, Quebec	G.B. Oullette	G.B. Oullette	27 July 1960	OQ076911, OQ076913

the CHUL Research Center Sequencing and Genotyping Platform (Québec City, Québec, Canada).

## Sequences and phylogenetic analysis

ITS sequence data from the fresh specimen and herbarium specimens were aligned with ITS sequences from *M. epitea* and closely related *Melampsora* spp. retrieved from GenBank. Sequence chromatograms were trimmed, manually assessed for quality, and aligned for consensus using BioEdit ver 7.2 (Hall, 1999). Sequence identity was assigned using the BLASTn (Altschul et al., 1990) on the GenBank-NCBI nucleotide collection (nt) with homolog sequences. Maximum likelihood (ML) phylogenetic trees were constructed with RaxML (Stamatakis, 2014) using the GTR + GAMMA nucleotide evolution model. ModelTest-NG (Darrriba et al., 2020) was used to identify the best-fitting nucleotide evolution model for this dataset. The maximum parsimony (MP) tree was identified by conducting a heuristic search and 100 random additions of sequences (RAS) with PAUP ver. 4.0b10 (Swofford, 2003). Statistical support for nodes on the ML and MP phylogenetic trees were obtained with 100 bootstrap replicates, saved in a Newick format, and then edited using TreeGraph 2 (Stöver and Müller, 2010), collapsing nodes for the minimum 70% consensus rule.

## Results

Examination of the specimens revealed bright yellow uredinia present on leaves, catkins, and stems (Figure 1). Fresh urediniospores were yellow, echinulate, and globose to broadly ellipsoid and measured [(length × width) (min-)  $\bar{x}$  ± SD (-max)]: (20-)  $25.4 \pm 3.17$  (-35) × (17.5-)  $20.6 \pm 1.62$  (-23)  $\mu\text{m}$ . Further examination of dried material revealed no significant difference in urediniospore size produced in uredia on catkins, stems, or leaves (length  $F_{2,87} = 1.24$ ,  $p = 0.294$ ; width  $F_{2,87} = 2.19$ ,  $p = 0.119$ ), suggesting that all tissues were infected by the same pathogen. Urediniospores from the dried material were no longer yellow and measured (20-)  $23.8 \pm 1.89$  (-30) × (12.5-)  $15.9 \pm 1.41$  (-20)  $\mu\text{m}$ .

When the ITS sequence data were aligned with sequence data from close relatives that were deposited in GenBank, it was found that the rust collected in this study was part of the *Melampsora epitea* complex. Comparison of the ITS sequence data from the fresh material with ITS sequence data generated from herbarium material resulted in a 100% identity with the specimen WINF(M)7356, identified as *Melampsora abietis-capraearum*, which was collected in 1967 from Devils Lake, Manitoba. The sequence was also 100% identical with the GenBank sequence GQ479229, *M. epitea*, collected from Edmonton, Alberta, in 2006 (Figure 2), and had a 99% identity match with the herbarium specimens CFB8931, *Melampsora* sp. collected from the Ross River in the Yukon in 1969

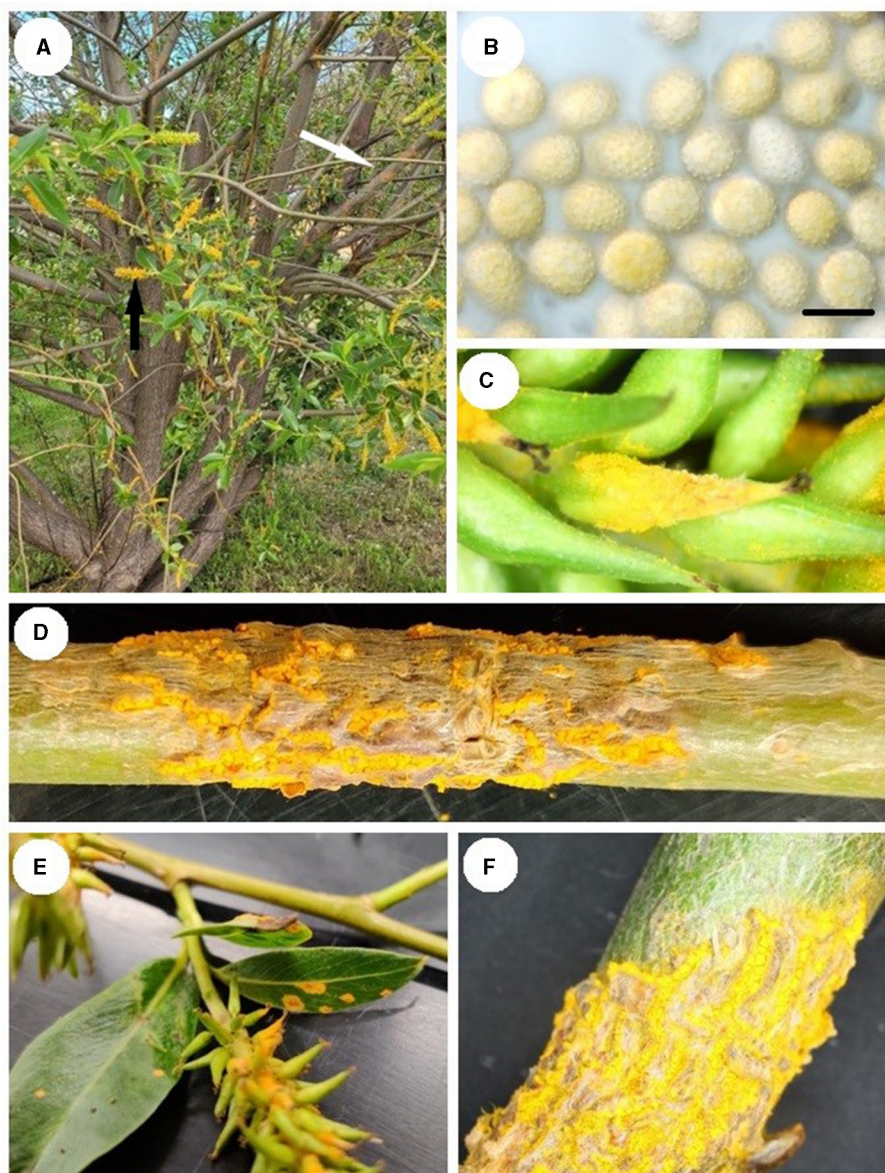


FIGURE 1

*Melampsora epiteae*-infected *Salix pentandra*: (A) Uredinia on the stem (white arrow) and seed catkins (black arrow). (B) Urediniospores under 1,000× magnification in water, scale bar 20 μm. (C) Uredinia on seed catkin. (D) Uredinia on a stem. (E) Uredinia on leaves and catkins. (F) Uredinia on branch.

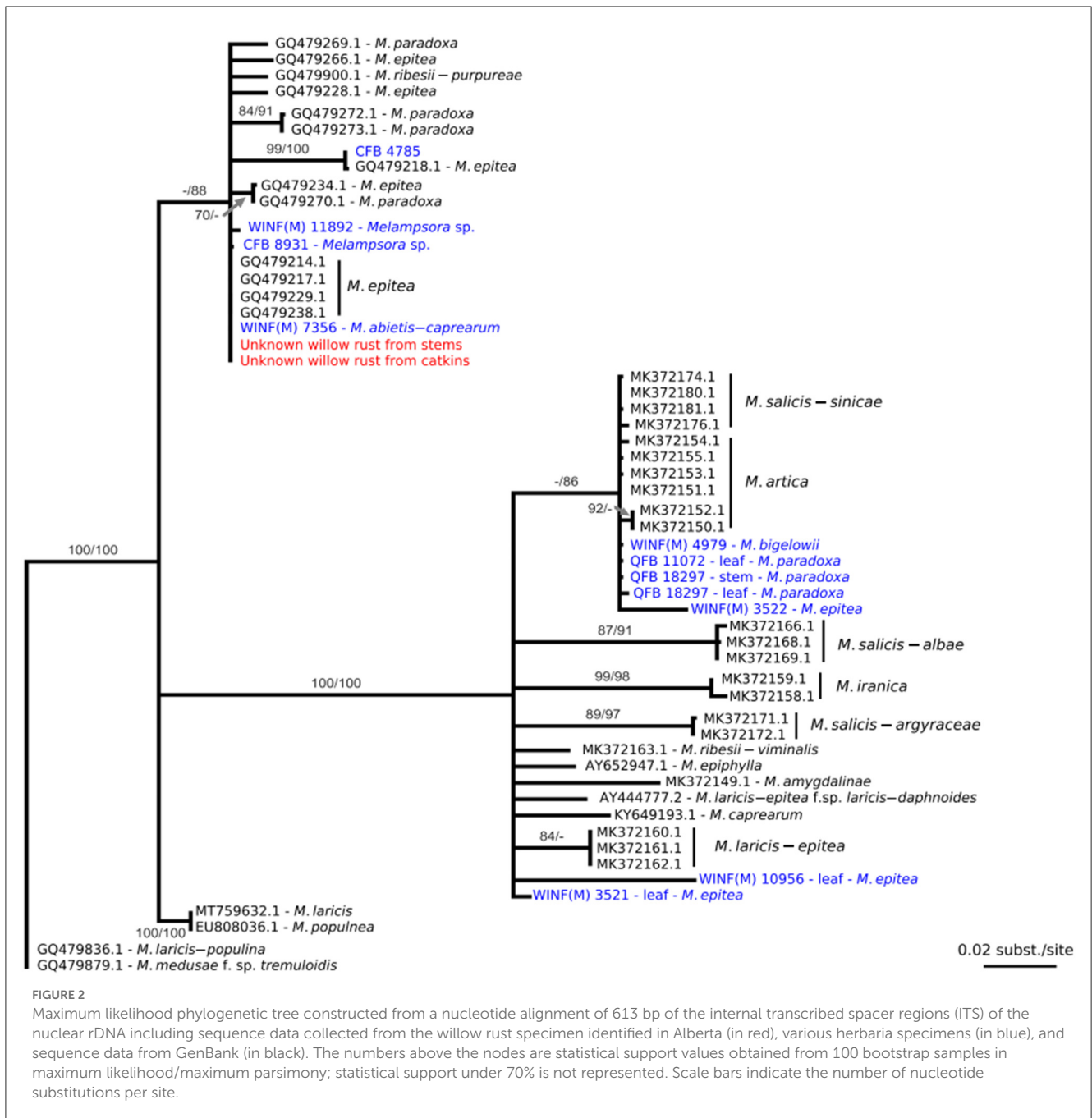
and WINF(M)11892, *Melampsora* sp. collected from Braintree, Manitoba, in 1969.

A representative sample from the specimen has been entered into the CFB herbarium under the accession number CFB22329. The ITS sequence data from this specimen has been accessioned in GenBank under the numbers OQ076914 for urediniospores from the stem and OQ076915 for urediniospores from catkins.

## Discussion

Diseased *S. pentandra* with uredinia on stems, catkins, and leaves were collected from northern Alberta, Canada. As Ziller

(1974) states that *M. epitea* is responsible for yellow leaf spots or blight, further examination of this material was undertaken. Urediniospores were larger than that reported by Ziller (1959) but otherwise matched the description. Further examination using DNA sequence data to determine the identity of this pathogen was performed. When the ITS sequence data from this specimen was compared with sequence data in GenBank, it was revealed that the specimen was part of the *Melampsora epitea* species complex. Phylogenetic analysis of the ITS data from this specimen and sequence data from herbarium specimens and GenBank accessions resulted in a 100% match with the specimen WINF(M)7356, which is morphologically identified as *M. abieti-capraearum* [which Ziller (1974) states as indistinguishable from *M. epitea* in the aecial,



uredinial, and telial stages] collected in 1967 from Manitoba, and GenBank accession GQ479229, which is identified as *M. epitea* collected from Edmonton, Alberta, in 2006. Stem cankers have also been observed on *Salix* sp. in Minnesota (Ostry and Anderson, 2001) and on *Salix arctica* Pall. from Ellesmere Island (Smith et al., 2004). Stem cankers have been hypothesized to provide an overwintering mechanism in the closely related species *M. paradoxa* (Crowell et al., 2022). Altogether, these results suggest that the diseased material collected in northern Alberta in 2021 is not the product of a recent introduction. Instead, the pathogen responsible for this stem canker symptom on willows seems to be relatively widespread in Western Canada. Two additional public inquiries during the summer of 2022 from ornamental willows

in the Edmonton region determined it to be the same pathogen, further supporting the conclusion that the pathogen is established in Canada.

This study has demonstrated the importance of preserving specimens in biological collections. The CFB, DACFP, S, and WINF(M) collections maintained at the Northern Forestry Centre in Alberta contain a combined 237 accessions of *Salix* spp. infected by *Melampsora* spp. that are identified as, *M. epitea*, *M. paradoxa*, *M. abieti-capaeorum*, and *M. bigelowii*. The QFB collection maintained in the Pomerleau herbarium at the Laurentian Forestry Centre in Quebec contains 87 specimens of willow infected by *Melampsora* rusts. Analysis of the ITS sequence data generated from a subset of these herbaria specimens was key to determining

that the pathogen collected in this study was already present in Canada. The specimens housed in these herbaria were all identified based on morphology and host associations. Identifying the causal agent of rust disease on willows based on morphology is difficult due to the similarity of key characteristics (Ziller, 1974), and recent DNA-based studies have suggested that *M. epitea* is far more complex than revealed by morphological examination (Smith et al., 2004; Bennett et al., 2011; Kenaley et al., 2014; Zhao et al., 2017). Having these specimens available for research will be an important resource for any future studies related to understanding the composition of the *M. epitea* complex in Canada.

Within Canada, short-rotation willow plantations are becoming increasingly common for phytoremediation (Jerbi et al., 2023) and bioenergy production (Buss et al., 2022). These plantations rely on genotypes that have been selected for growth and yield, and some of these genotypes have been demonstrated to become infected by *M. epitea* (McCracken and Dawson, 2003). Losses caused by a stem-infecting form of *Melampsora* that caused stem cankers on *Salix viminalis* L. in the United Kingdom (Pei et al., 1995) also demonstrated the risk posed to Canadian willows. Surveys of phytoremediation willow plantations in the Edmonton area that were conducted as part of a project to assess willow health have not revealed the presence of any *Melampsora* spp. on leaves or stems to date. As these plantations become more prominent in Canada, health surveys should include *M. epitea* as a pathogen of concern.

Further research is necessary to understand the exact identity of the pathogen observed in this study and to determine the aecial host as all materials that were examined were from the uredinial host. The finding that the ITS sequence data from the specimen examined in this study was a 100% match with herbarium material, collected between 1967 and 2006 in Canada, suggests that it is not a recent introduction, but rather that the pathogen has been long-established in central and northwestern parts of Canada. The formation of stem cankers, however, appears to have been rarely observed due to the lack of herbarium specimens that include stem material and the descriptions included within Ziller (1974). It is unknown why stem cankers have not been observed more frequently in the past, but the sample examined in this study was collected from an exotic ornamental by a homeowner who was closely monitoring the health of the trees on their property.

## Data availability statement

The datasets presented in this study can be found in online repositories. The names of the repository/repositories and

accession number(s) can be found at: <https://www.ncbi.nlm.nih.gov/genbank/>, OQ076902–OQ076913.

## Author contributions

This work was conceived by TDR who led writing of the manuscript, performed microscopic analysis, and provided herbarium material from the Northern Forestry Centre. NF conducted the phylogenetic analysis and contributed to writing. PT provided herbarium material from the Laurentian Forestry Centre and contributed to writing. RCH provided funding for DNA sequence analysis and contributed to writing. PH performed DNA extractions and sequencing and contributed to writing. TB provided sample material and observations from Alberta. All authors contributed to the article and approved the submitted version.

## Funding

Funding provided by the Canadian Forest Service. RCH was funded by Genome Canada's Large Scale Applied Research Program Project 10106.

## Acknowledgments

Pascal Frey (INRAE, France) and Salvatore Moricca (UniFI, Italy) provided important information early in this study that helped to focus our research direction. The technical assistance of Malithi Sella Kapu and Bradley Tomm is greatly appreciated.

## Conflict of interest

TB was employed by ATTS Group Inc.

The remaining authors declare that the research was conducted in the absence of any commercial or financial relationships that could be construed as a potential conflict of interest.

## Publisher's note

All claims expressed in this article are solely those of the authors and do not necessarily represent those of their affiliated organizations, or those of the publisher, the editors and the reviewers. Any product that may be evaluated in this article, or claim that may be made by its manufacturer, is not guaranteed or endorsed by the publisher.

## References

- Altschul, S. F., Gish, W., Miller, W., Myers, E. W., and Lipman, D. J. (1990). Basic local alignment search tool. *J. Mol. Biol.* 215, 403–410. doi: 10.1016/S0022-2836(05)80360-2
- Bennett, C., Aime, M. C., and Newcombe, G. (2011). Molecular and pathogenic variation within *Melampsora* on *Salix* in western North America reveals numerous cryptic species. *Mycologia* 103, 1004–1018. doi: 10.3852/10-289

- Buss, J., Mansuy, N., Laganière, J., and Persson, D. (2022). Greenhouse gas mitigation potential of replacing diesel fuel with wood-based bioenergy in an arctic Indigenous community: A pilot study in Fort McPherson, Canada. *Biomass Bioenergy* 159, 106367. doi: 10.1016/j.biombioe.2022.106367
- Crowell, C. R., Wilkerson, D. G., Smart, L. B., and Smart, C. D. (2022). Evidence of asexual overwintering of *Melampsora paradoxa* and mapping of stem rust host resistance in *Salix*. *Plants* 11, 2385. doi: 10.3390/plants11182385
- Darriba, D., Posada, D., Kozlov, A. M., Stamatakis, A., Morel, B., and Flouri, T. (2020). ModelTest-NG: A new and scalable tool for the selection of DNA and protein evolutionary models. *Mol. Biol. Evol.* 37, 291–294. doi: 10.1093/molbev/msz189
- Farrar, J. L. (1995). *Trees in Canada*. Ottawa: Fitzhenry & Whiteshead Limited and the Canadian Forest Service, Natural Resources Canada. Canada Communication Group – Publishing Supply and Services Canada.
- Gardes, M., and Bruns, T. D. (1993). ITS primers with enhanced specificity for basidiomycetes—application to the identification of mycorrhizae and rusts. *Mol. Ecol.* 2, 113–118. doi: 10.1111/j.1365-294X.1993.tb00005.x
- Hall, T. A. (1999). BioEdit: A user-friendly biological sequence alignment editor and analysis program for Windows 95/98/NT. *Nucl. Acids Symp. Ser.* 41, 95–98.
- Jerbi, A., Kalwahali-Muissa, M., Krygier, R., Johnston, C., Blank, M., Sarrazin, M., et al. (2023). Comparative wood anatomy, composition and saccharification yields of wastewater irrigated willow cultivars at three plantations in Canada and Northern Ireland. *Biomass Bioenergy* 170, 106683. doi: 10.1016/j.biombioe.2022.106683
- Kenaley, S. C., Smart, L. B., and Hudler, G. W. (2014). Genetic evidence for three discrete taxa of *Melampsora* (*Pucciniales*) affecting willows (*Salix* spp.) in New York State. *Fungal Biol.* 118, 704–720. doi: 10.1016/j.funbio.2014.05.001
- McCracken, A. R., and Dawson, W. M. (2003). Rust disease (*Melampsora epitea*) of willow (*Salix* spp.) grown as short rotation coppice (SRC) in inter- and intra-species mixtures. *Ann. App. Biol.* 143, 381–393. doi: 10.1111/j.1744-7348.2003.tb00308.x
- Ostry, M. E., and Anderson, N. A. (2001). *Melampsora* leaf rust of willow causing a stem canker in Minnesota. *Plant Dis.* 85, 229. doi: 10.1094/PDIS.2001.85.2.229C
- Pei, M. H., Royle, D. J., and Hunter, T. (1995). A comparative study of stem- and leaf-infecting forms of *Melampsora* rust on *Salix viminalis* in the U.K. *Mycol. Res.* 99, 357–363. doi: 10.1016/S0953-7562(09)80913-1
- Smith, J. A., Blanchette, R. A., and Newcombe, G. (2004). Molecular and morphological characterization of the willow rust fungus, *Melampsora epitea*, from arctic and temperate hosts in North America. *Mycologia* 96, 1330–1338. doi: 10.1080/15572536.2005.11832882
- Stamatakis, A. (2014). RAXML version 8: A tool for phylogenetic analysis and post-analysis of large phylogenies. *J. Bioinform.* 30, 1312–1313. doi: 10.1093/bioinformatics/btu033
- Stöver, B. C., and Müller, K. F. (2010). TreeGraph 2: Combinin and visualizing evidence from different phylogenetic analyses. *BMC Bioinform.* 11, 7. doi: 10.1186/1471-2105-11-7
- Swofford, D. L. (2003). *PAUP\*: Phylogenetic Analysis Using Parsimony (\* and Other Methods)*. Version 4.0b10. Sunderland, MA: Sinauer Associates Inc.
- White, T. J., Bruns, T. D., Lee, S. B., and Taylor, J. W. (1990). “Amplification and direct sequencing of fungal ribosomal RNA genes for phylogenetics,” in *PCR Protocols: A Guide to Methods and Applications*, eds M. Innis, D. Gelfand, J. Shinsky, and T. White (San Diego, CA: Academic Press), 315–322. doi: 10.1016/B978-0-12-372180-8.50042-1
- Zhao, P., Kakishima, M., Wang, Q., and Cai, L. (2017). Resolving the *Melampsora epitea* complex. *Mycologia* 109, 391–407. doi: 10.1080/00275514.2017.1326791
- Ziller, W. G. (1959). Studies of western tree rusts V. The rusts of hemlock and fir caused by *Melampsora epitea*. *Can. J. Bot.* 37, 109–119. doi: 10.1139/b59-010
- Ziller, W. G. (1974). *The Tree Rusts of Western Canada*. Ottawa, ON: Canadian Forestry Service Publication No. 1329.