



OPEN ACCESS

EDITED AND REVIEWED BY
Jan Tesarik,
MARGen Clinic, Spain

*CORRESPONDENCE

Chuan Shao

✉ scshaochuan@yahoo.com;

✉ shaochuan@nsmc.edu.cn

RECEIVED 13 October 2024

ACCEPTED 24 October 2024

PUBLISHED 05 November 2024




CITATION

Tang H, Yang X, Li Z, Zhang Y, Chen H,
Dai M and Shao C (2024) Corrigendum:
Association between female infertility
and stroke mortality: evidence from
the PLCO cancer screening trial.
Front. Endocrinol. 15:1510810.
doi: 10.3389/fendo.2024.1510810

COPYRIGHT

© 2024 Tang, Yang, Li, Zhang, Chen, Dai and
Shao. This is an open-access article distributed
under the terms of the [Creative Commons
Attribution License \(CC BY\)](#). The use,
distribution or reproduction in other forums
is permitted, provided the original author(s)
and the copyright owner(s) are credited and
that the original publication in this journal is
cited, in accordance with accepted academic
practice. No use, distribution or reproduction
is permitted which does not comply with
these terms.

Corrigendum: Association between female infertility and stroke mortality: evidence from the PLCO cancer screening trial

Hui Tang ^{1,2,3}, Xueming Yang¹, Zhou Li ^{1,2,3},
Yuan Zhang ^{1,2,3}, Huaxuan Chen^{1,2,3}, Mingjun Dai ¹
and Chuan Shao ^{1,2,4*}

¹Department of Neurosurgery, Nanchong Central Hospital, The Second Clinical Medical College, North Sichuan Medical College, Nanchong, Sichuan, China, ²Nanchong Institute of Cerebrovascular Diseases, Nanchong, Sichuan, China, ³Sichuan Clinical Research Center for Neurological Disease, Nanchong, Sichuan, China, ⁴Department of Neurosurgery, Chongqing General Hospital, Chongqing University, Chongqing, China

KEYWORDS

infertility, stroke, mortality, female, long-term impact

A Corrigendum on

Association between female infertility and stroke mortality: evidence from the PLCO cancer screening trial

By Tang H, Yang X, Li Z, Zhang Y, Chen H, Dai M and Shao C (2024). *Front. Endocrinol.* 15:1433930. doi: 10.3389/fendo.2024.1433930

In the published article, there was an error in **Table 1** and **Figure 3** as published. The terms 'Former' and 'Current' were inadvertently transposed within the smoking status category. The corrected **Table 1** and **Figure 3** and its caption appear below.

The authors apologize for this error and state that this does not change the scientific conclusions of the article in any way. The original article has been updated.

Publisher's note

All claims expressed in this article are solely those of the authors and do not necessarily represent those of their affiliated organizations, or those of the publisher, the editors and the reviewers. Any product that may be evaluated in this article, or claim that may be made by its manufacturer, is not guaranteed or endorsed by the publisher.

TABLE 1 Baseline characteristics of the subjects by the history of infertility at baseline.

Characteristic	Unexposed <i>n</i> , % or Mean (IQR)	Infertility <i>n</i> , % or Mean (IQR)	<i>p</i> value
Sample size	64,774 (85.47)	11,004 (14.53)	
Age (year)	62 (58, 67)	62 (57, 67)	0.368
Race			<0.001
White	57,190 (88.29)	9,978 (90.68)	
Other [#]	7,584 (11.71)	1,026 (9.32)	
Marital status			<0.001
Ever married or living with partner	62,138 (96.07)	10,974 (99.85)	
Never married	2,543 (3.93)	16 (0.15)	
Missing	93	14	
Education level			<0.001
Under university	30,809 (47.66)	4,706 (42.84)	
At least university	33,836 (52.34)	6,280 (57.16)	
Missing	129	18	
Smoking status			<0.001
Never	36,215 (55.91)	5,956 (54.13)	
Current	6,296 (9.72)	1,054 (9.58)	
Former	22,258 (34.37)	3,994 (36.30)	
Missing	5	0	
Body mass index (kg/m ²)			0.001
Underweight or normal	26,219 (41.04)	4,627 (42.54)	
Overweight	21,954 (34.36)	3,734 (34.33)	
Obesity	15,715 (24.60)	2,516 (23.13)	
Missing	886	127	
Hypertension			0.525
No	42,516 (65.98)	7,258 (66.29)	
Yes	21,924 (34.02)	3,691 (33.71)	
Missing	334	55	
Heart attack			0.186
No	61,303 (95.20)	10,381 (94.91)	
Yes	3,090 (4.80)	557 (5.09)	
Missing	381	66	
Diabetes mellitus			0.063
No	60,343 (93.66)	10,201 (93.19)	
Yes	4,082 (6.34)	745 (6.81)	
Missing	349	58	
Birth control pill use			<0.001
No	29,239 (45.17)	5,399 (49.11)	
Yes	35,493 (54.83)	5,594 (50.89)	

(Continued)

TABLE 1 Continued

Characteristic	Unexposed <i>n</i> , % or Mean (IQR)	Infertility <i>n</i> , % or Mean (IQR)	<i>p</i> value
Missing	42	11	
Hormone replacement therapy			<0.001
No	22,050 (34.21)	3,282 (29.97)	
Yes	42,408 (65.79)	7,668 (70.03)	
Missing	316	54	
Endometriosis			<0.001
No	57,220 (92.76)	8,878 (84.71)	
Yes	4,464 (7.24)	1,602 (15.29)	
Missing	3,090	524	
First menstrual period (year)			0.003
≤11	13,026 (20.14)	2,381 (21.67)	
12-13	34,862 (53.91)	5,797 (52.75)	
≥14	16,779 (25.95)	2,812 (25.58)	
Missing	107	14	
Pregnancy history			<0.001
No	4,036 (6.23)	1,629 (14.88)	
Yes	60,698 (93.77)	9,321 (85.12)	
Missing	40	54	

Continuous variables are presented as median (IQR, interquartile range), while categorical variables are presented as counts or percentages. *Other includes Black, Hispanic, Asian, Pacific Islander, American Indian.

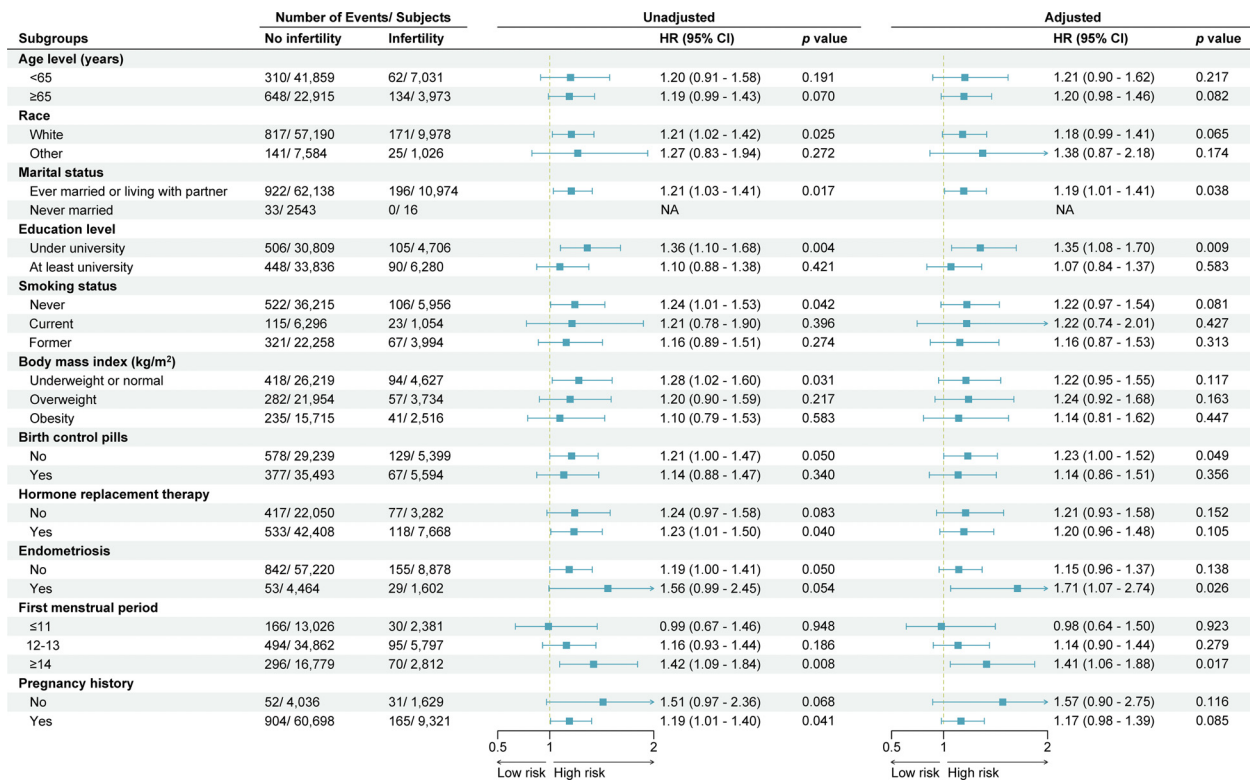


FIGURE 3 Subgroup analysis and forest plot for stroke-cause mortality in women with and without infertility. This forest plot shows the number of deaths and subjects, unadjusted and adjusted hazard ratios (HR) with 95% confidence interval (CI), according to baseline characteristics. Hazard ratios were adjusted for age, race, marital status, education level, smoking status, body mass index, history of hypertension, history of heart attack, history of diabetes mellitus, birth control pill use, hormone replacement therapy, endometriosis, first menstrual period and pregnancy history. NA, not available.