



OPEN ACCESS

EDITED BY

Lin Sun,
Central South University, China

REVIEWED BY

Hengguo Zhang,
Anhui Medical University, China
Wei Zhou,
Zhejiang University School of Medicine,
China

*CORRESPONDENCE

Juan Jin

✉ lang_018@163.com

Qiang He

✉ qianghe1973@126.com

†These authors have contributed equally to
this work

RECEIVED 20 February 2023

ACCEPTED 09 June 2023

PUBLISHED 04 July 2023

CITATION

Fang J, Song K, Zhang D, Liang Y, Zhao H,
Jin J and He Q (2023) Coffee intake and
risk of diabetic nephropathy: a Mendelian
randomization study.
Front. Endocrinol. 14:1169933.
doi: 10.3389/fendo.2023.1169933

COPYRIGHT

© 2023 Fang, Song, Zhang, Liang, Zhao, Jin
and He. This is an open-access article
distributed under the terms of the [Creative
Commons Attribution License \(CC BY\)](#). The
use, distribution or reproduction in other
forums is permitted, provided the original
author(s) and the copyright owner(s) are
credited and that the original publication in
this journal is cited, in accordance with
accepted academic practice. No use,
distribution or reproduction is permitted
which does not comply with these terms.

Coffee intake and risk of diabetic nephropathy: a Mendelian randomization study

Jiayi Fang^{1,2†}, Kai Song^{3†}, Di Zhang², Yan Liang², Huan Zhao²,
Juan Jin^{4*} and Qiang He^{4*}

¹Zhejiang Provincial People's Hospital, Qingdao University, Hangzhou, Zhejiang, China, ²Nephrology Center, Department of Nephrology, Zhejiang Provincial People's Hospital, Affiliated People's Hospital, Hangzhou Medical College, Hangzhou, Zhejiang, China, ³Geriatric Medicine Center, Department of Endocrinology, Zhejiang Provincial People's Hospital, Affiliated People's Hospital, Hangzhou Medical College, Hangzhou, Zhejiang, China, ⁴Department of Nephrology, The First Affiliated Hospital of Zhejiang Chinese Medical University, Zhejiang Provincial Hospital of Traditional Chinese Medicine, Hangzhou, Zhejiang, China

Rationale and objective: A causal relationship concerning coffee intake and diabetic nephropathy (DN) is controversial. We conducted a Mendelian randomization study to assess the causal nature of these associations.

Methods: 40 independent single nucleotide polymorphisms (SNPs) associated with coffee intake were selected from the UK Biobank study. Summary-level data for diabetic nephropathy were obtained from publicly available genome-wide association studies (GWAS) and the FinnGen consortium. Inverse variance weighted (IVW), MR-Egger, and weighted median (WM) methods were used to examine a causal association. Sensitivity analyses included Cochran's Q test, the intercept of MR-Egger, MR-PRESSO, and the Outlier method. Leave-One-Out sensitivity analyses were also conducted to reduce the heterogeneity.

Results: Our current study demonstrated positive associations of genetically predicted coffee intake with diabetic nephropathy (OR=1.939; $P = 0.045$ and type 2 diabetes with renal complications (OR = 2.787, $P = 0.047$). These findings were robust across several sensitivity analyses.

Conclusions: This study found a positive correlation between coffee consumption and the risk of diabetic nephropathy using genetic data. For a more accurate and trustworthy conclusion, subgroup analysis on coffee intake, including preparing method, variety of coffee, and quantity, is required.

KEYWORDS

coffee intake, diabetic nephropathy, Mendelian randomization, causality, risk

Introduction

Diabetes mellitus (diabetes) is a growing public health concern associated with significant health care expenses and mortality. Epidemiological studies claim that diabetes affects more than 425 million individuals worldwide, and its prevalence and incidence are growing(1), thus suggesting the concept of a diabetic pandemic. Diabetic kidney disease, also known as diabetic nephropathy, is a prevalent and refractory chronic microvascular complication in diabetic patients, and the primary cause of end-stage renal disease (ESRD) worldwide(2). The World Health Organization (WHO) estimates that the number of diabetic patients will increase to 700 million, and more than 1/3 of diabetic patients with clinically develop DKD patients until 2045, a significant cause of disability and death in diabetic patients(3). Early DKD is characterised by glomerular membrane dilatation, increased glomerular filtration rate, microalbuminuria, podocyte loss, increased basement membrane thickness, glomerular and renal tubular cell damage, which leads to glomerular sclerosis and interstitial fibrosis, and ultimately renal failure. (4). Therefore, strategies to prevent and treat diabetic nephropathy are urgently needed. The number of diabetics with end-stage renal disease continues to rise despite intensive efforts to find pharmacological therapies to halt the progression of the disease (5). However, many medications have adverse effects; therefore, dietetic therapy or a highly effective and low-toxic medication is a novel approach to the treatment of diabetic nephropathy.

Coffee is the world's most beloved drink, second only to water, with an estimated consumption value of 10 billion US dollars globally. Coffee is a commonly ingested beverage consisting of a complex mixture of compounds, such as caffeine, chlorogenic acid, and diterpenes (6). Drinking coffee can be both beneficial and detrimental to body health. The health benefits of coffee are predominantly attributable to its high plant ingredient content, including caffeine and chlorogenic acid (7, 8). Caffeine is one of the major pharmacologically active compounds found in coffee, which has both positive and negative effects on human health. The equilibrium between caffeine's positive and negative health effects depends largely on an individual's susceptibility to its effects(6).

Although there is still no solid evidence linking coffee intake to a higher risk of heart disease and hypertension (9, 10), coffee consumption is inversely linked to dementia, developing insulin resistance, type 2 diabetes, cirrhosis, and an increased risk of osteoporosis (11–15). Coffee may affect the risk of chronic diseases such as melancholy, type 2 diabetes, and Parkinson's disease, according to the majority of current research (16, 17). Epidemiological and observational research have explored the relationship between coffee consumption and the risk of T2DM and discovered that persons who consume more coffee had greater glucose tolerance and a much lower risk of T2DM(18). Although the evidence is inconclusive, a higher coffee intake has been associated with enhanced kidney function. Observational studies have found either an association between higher coffee consumption and a lower risk of chronic kidney disease (CKD) (19, 20), albuminuria (21), or kidney failure (22) or no association

with CKD(23). However, other studies have found that coffee consumption can impair glucose tolerance and reduce insulin sensitivity(24). There is evidence that caffeine consumption (5 mg/kg BW) causes diminished insulin sensitivity and acute insulin-insensitive environments in type 2 diabetics, thus disrupting blood glucose homeostasis in response to high and low glycaemic index meals in healthy men(25). In addition, caffeine in coffee may interact with adenosine receptors, interfering with adenosine's anti-inflammatory and glomerular hemodynamic effects, leading to albuminuria and glomerular remodelling and sclerosis(26, 27). To summarize, their results were not consistent. In addition, most studies have focused on the relationship between coffee intake, blood glucose level, diabetes risk, and diabetes-related complications, especially diabetic nephropathy, which were rarely included as outcome indicators.

Mendelian randomization (MR) is a research technique employed to study causal relationships. It is based on the principle of genetics, where the inheritance of genes is random. The technique employs genetic variants that are related to a risk factor to validate the assumption that this risk factor is responsible for a particular outcome. Because genetic variants are arbitrarily inherited, they can be used as a surrogate for exposure to the risk factor, providing a natural experiment for testing causality(28). Since it reduces the likelihood of confounding, reverse causality, and bias due to measurement error, it can effectively avoid confounding and reverse causal bias discrimination and provide more substantial evidence of causality to traditional epidemiological studies(29). Overall, MR is a valuable tool for causal inference and provides a complementary approach to formal observational studies, especially when conventional confounding control methods are insufficient.

Consequently, the purpose of this study was to investigate the genetic causality between coffee consumption and diabetic nephropathy using a two-sample MR analysis based on the GWAS database.

Materials and methods

Study design

GWAS data on coffee intake and four outcomes related to diabetic nephropathy were acquired by the publicly available GWAS catalog, UK Biobank (www.nealelab.is/uk-biobank), FinnGen database (www.finnngen.fi/fi) and CKDgen consortium. Because of the re-analysis of previously summarized data, no additional ethical approval was required. We used R (version 4.2.1) and Two-sample MR (version 0.5.5) to conduct a two-sample MR analysis.

Mendelian randomization relies on three fundamental hypotheses: 1) The Instrumental Variable Hypothesis: The genetic variant selected as the instrumental variable (IV) is unintentionally related to the exposure of interest in a casual manner. 2) The used genetic variants should not be associated with potential confounding variables in the exposure–outcome relationship. 3) The Pleiotropy Hypothesis: The genetic variant used as the IV is associated solely with the outcome *via* its effect on the exposure and

no other biological pathways. Figure 1 depicts the MR design's flowchart.

To develop genetic instruments for coffee consumption and diabetic nephropathy, we identified SNPs (single nucleotide polymorphisms) that are reliable ($P < 5 \times 10^{-8}$) and independent ($r^2 < 0.001$, kb = 10,000) of coffee intake. PhenoScanner V2 (www.phenoscanter.medschl.cam.ac.uk) was used to remove the SNPs related to potential confounders of Diabetic nephropathy. We compute the F statistic to determine the reliability of each genetic instrument. If the F-statistic is greater than 10, the association between IV and exposure was strong. The F-statistic for each SNP was calculated as follows:

$$F = \left(\frac{R^2}{1 - R^2} \right) * \left(\frac{n - k - 1}{k} \right)$$

R^2 was calculated as follows:

$$R^2 = 2 * (1 - MAF) * MAF * (\beta)^2$$

R^2 : the cumulative explained variance of the selected IVs on exposure; EAF: the effect of allele frequency

β : estimated effect of SNP; N: sample size of the GWAS

Genetic instrument selection

From genome-wide association studies (GWAS) on coffee consumption in the GWAS database with up to 428,860 individuals of European ancestry, 40 single-nucleotide polymorphisms (SNPs) were associated with coffee consumption. To avoid potential bias due to substantial linkage disequilibrium (LD), we chose SNPs with LD $r^2 < 0.001$. F statistics were calculated to ensure the strong correlation between SNP and exposure, and SNPs with $F > 10$ were extracted.

Data source for diabetic nephropathy

The detailed information of genome-wide association studies included in this paper were listed in Table 1. Diabetic nephropathy was defined as an outcome when glomerular disorders in patients with diabetes mellitus met the ICD-10 (code: N08.3*) criterion, with summary statistics from the FinnGen biobank including 213,746 European individuals (3,283 cases and 2,10463 controls). We also collected the aggregated data on glomerular filtration rate in diabetics from a previous study containing 144,935 participants of European (30). We extracted summary statistics for type 2 diabetes with renal complications from the FinnGen database, which included 1,296 cases and 183,185 European-descent controls. The GWAS data for type 1 diabetes with renal complications were derived from another summary-level GWAS data in FinnGen with a total of 963 cases and 183,185 controls. The GWAS summary data for Urinary albumin-to-creatinine ratio were extracted from the CKDgen consortium (<http://ckdgen.imbi.uni-freiburg.de/>), which included 5,825 cases and 46061 controls of European individuals.

Statistical analysis

The inverse variance weighting (IVW), MR-Egger, and weighted median (WM) methods were used to examine a causal association, with IVW being the primary analytical method (31). IVW method can achieve unbiased causal estimates without horizontal pleiotropy where the variants affect the direction and outcome through pathways that are not on the causal pathway of interest (32). Therefore, the results of the IVW method are the most accurate. The weight median method is less sensitive to outliers and measurement errors than other methods. The MR-Egger method

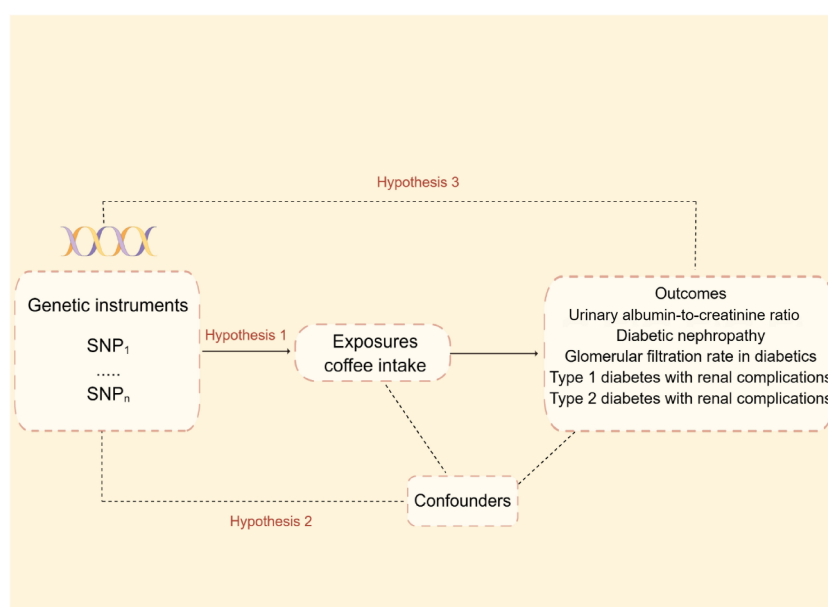


FIGURE 1 Mendelian randomization model and three fundamental assumptions of a Mendelian randomization analysis. SNP, single nucleotide polymorphisms.

TABLE 1 Details of the GWAS studies included in the Mendelian randomization.

Year	Trait	Population	Sample size	Web source
2018	Coffee intake	European	428,860	www.nealelab.is/uk-biobank
2021	Diabetic nephropathy	European	184,987	www.finngen.fi/fin
2016	Glomerular filtration rate in diabetics	European	144,935	DOI: 10.1038/ncomms10023 PMID: 26831199
2021	Type2 diabetes with renal complications	European	184,481	www.finngen.fi/fin
2021	Type 1 diabetes with renal complications	European	184,148	www.finngen.fi/fin
2015	Urinary albumin-to-creatinine ratio in diabetes	European	51,886	http://ckdgen.imbi.uni-freiburg.de/ PMID: 26631737

regresses the genetic variant-outcome associations on the genetic variant-exposure associations, allowing for the presence of pleiotropy, so it can provide a valid causal estimate even in the presence of pleiotropy, as long as certain assumptions are met. In conclusion, the WM and MR-Egger methods were performed as additional tests for the MR estimates.

Several sensitivity analyses were conducted to obtain stable MR estimates. The IVW and MR-Egger were utilised to quantify the heterogeneity effect among genetic instruments (33). The Cochran's Q test was used to evaluate the heterogeneity of a subset of genetic IVs. The vertical pleiotropy was evaluated by the intercept obtained by MR-Egger regression (34). MR-Pleiotropy Residual Sum and Outlier method (MR-PRESSO) was also performed to detect the outliers and potential horizontal pleiotropy (global $P < 0.05$ shows the presence of horizontal pleiotropy). Finally, the leave-one-out method was utilised to address sensitivity analysis.

According to the guidelines stated by STROBE-MR (35), we performed a two-sample MR study. The overall workflow of our two-sample MR study is set out in Figure 2.

Results and discussion

GWAS data on coffee intake

Summary-level GWAS data with coffee intake was obtained from the UK-biobank (www.nealelab.is/uk-biobank). As genetic instrumental variables, we extracted 38 SNPs (single nucleotide polymorphisms) that are reliable ($P < 5 \times 10^{-8}$) and independent ($r^2 < 0.001$, kb = 10,000) of coffee consumption eventually. Two SNPs (rs1421085 and rs476828) were disregarded by PhenoScanner V2 because they were associated with known confounding factors (diabetes and HbA1c). These SNPs and the strength and magnitude of their associations with coffee intake are shown in Table S1. There was no correlation between outcome variables and instrument variables, indicating the absence of instrument bias. The heterogeneity test stated the existence of heterogeneity in diabetic nephropathy and type 2 diabetes with renal complications, so we removed all outliers (with p -value < 1) identified in the MR-PRESSO outlier test and reperform MR analysis. After coordinating the allelic directions of exposure-SNP and outcome-SNP and eliminating palindromic SNP and incompatible SNP according to

the size of EAF, we finally got a summary table of SNPs for coffee intake and diabetic nephropathy. Refinement statistics are shown in Tables S2.1- S2.5.

The results of the two-sample MR analysis

Figure 3 shows estimates of the causal effects of coffee intake on diabetic nephropathy and forest plots of the estimates for each outcome using the different MR methods. Associations for individual SNPs in detail are presented in Supplementary Table S2. The causal effect estimate for each SNP on diabetic nephropathy is visualised using scatter plots of the SNP-outcome relationships and the SNP-coffee associations in Figure 4.

In a study of coffee intake and diabetic nephropathy, the odds ratio (OR) of IVW analysis was 1.939 (95% confidence interval [CI], 1.012-3.712; $P = 0.045$). The result of MR-Egger (OR = 4.384, $P = 0.025$) was consistent with IVW, indicating a significant positive causal connection were identified in coffee intake and diabetic nephropathy. When assessing heterogeneity, no indication of heterogeneity was found (Cochran's Q $P = 0.420$). The results of MR-Egger and MR-PRESSO did not suggest any evidence of horizontal pleiotropy (P for MR-Egger regression intercept = 0.137 and global test $P = 0.408$). The finding was robust in the leave-one-out sensitivity analysis (Figure S2A).

To provide a more nuanced study of coffee's casual effects on diabetic nephropathy, we analysed the two types of diabetic renal complications. For type 2 diabetes with renal complications, a weak significant causality was observed. IVW showed that the effect of coffee intake on type 2 diabetes with renal complications was statistically significant (OR = 2.787, 95% CI: 0.926-8.394; $P = 0.047$), the MR-Egger (OR = 6.622, $P = 0.095$) and WM analysis method results (OR = 3.065, $P = 0.136$) were inconsistent with IVW method however. Heterogeneity tests showed that there was no heterogeneity (Cochran's Q $P = 0.165$). And no evidence for directional horizontal pleiotropy was observed (P for intercept = 0.366, global test $P = 0.193$). The robustness of the outcomes was determined using the leave-one-out approach (Figure S1C). For type 1 diabetes with renal complications, the situation is dissimilar. A causal relationship was not found between coffee intake and type 1 diabetic renal complications (IVW: OR = 2.667, 95% CI: 0.796-8.929, $P = 0.112$). Likewise, there was no clear evidence of heterogeneity (Cochran's Q $P = 0.250$) or pleiotropy (Egger intercept

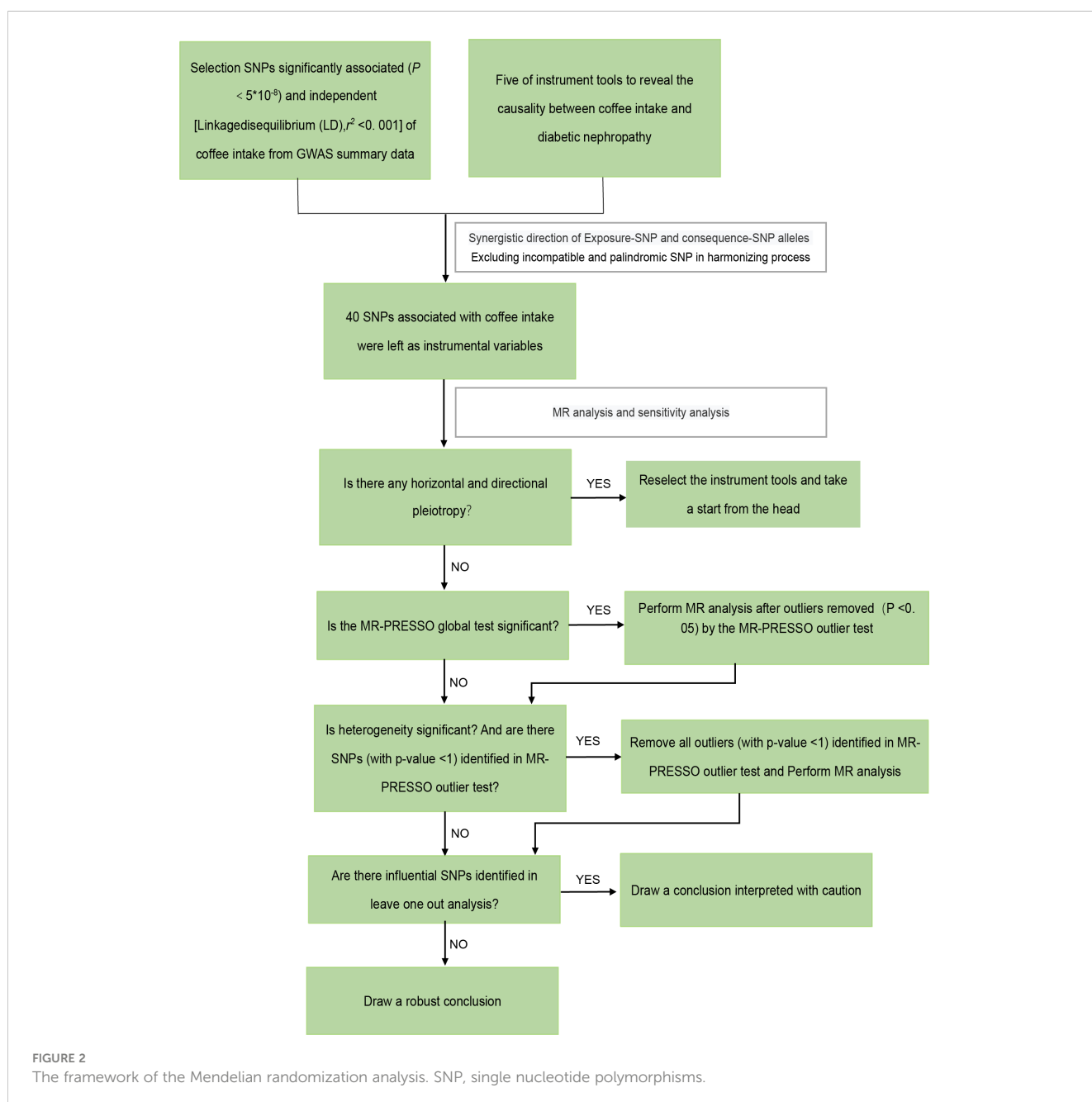
= 0.010, $P = 0.619$; global test $P = 0.277$). The leave-one-out sensitivity analysis validated the stability of the results (Figure S2B).

As for the glomerular filtration rate in diabetics, no clear causal relationship was found. Random effects IVW estimates indicated that a high level of coffee intake is not causally associated with a higher risk of glomerular filtration rate in diabetics (OR=1.004, 95% CI: 0.902-1.118, $P = 0.941$). Similar to the results of IVW analyses, the MR-Egger and WM analyses suggested a relationship of a non-distinctive character between coffee intake and glomerular filtration rate in diabetics. The P value of Cochran's Q test was 0.091, furthermore the results of the pleiotropy study performed using the MR-Egger intercept test and MR-PRESSO revealed that none of the 30 genetic variations exhibited any discernible pleiotropy (Egger intercept = -0.001, $P = 0.589$; global test $P = 0.089$). Similar to the

glomerular filtration rate, urinary albumin-to-creatinine ratio also did not find a significant causal association (OR=0.884, 95% CI: 0.395-1.802, $P = 0.661$). In addition, the MR-Egger (OR = 0.796, 95% CI = 0.173-3.663, $P = 0.772$) and WM (OR = 0.620, 95% CI = 0.200-1.913, $P = 0.405$) methods reached the same conclusion. Cochran's Q test and MR-Egger regression indicates there is no significant heterogeneity or vertical pleiotropy in our MR analysis. (Cochran's Q $P = 0.421$, Egger intercept = 0.001, $P = 0.932$; global test $P = 0.389$)

Discussion

The current study examined the relationship between coffee consumption and diabetic nephropathy using two sample MR



analyses. Our current study demonstrated positive associations of genetically predicted coffee intake with the risk of diabetic nephropathy in 428,860 participants of European ancestry.

Our finding on coffee intake concerning diabetic nephropathy aligns with some but not all previous studies. The study by Xiu et al. consisted of 7 randomised controlled trials (RCTs) in which caffeine intake was the sole variable. The researchers discovered that acute caffeine ingestion significantly decreased the insulin sensitivity index, with a standardised mean difference of 2.06 (95% confidence interval 2.67 to 1.44, I² = 49%, P for heterogeneity = 0.06) (36). The short-term trials also demonstrated a transient impairment in the 2–3h postprandial glucose response after coffee consumption. In comparison to water, caffeinated beverages may have a short-term effect on the glycemic AUC response (37). Coincidentally, when we investigated the association by coffee subtypes, individuals who consumed > 2 cups/day of caffeinated coffee revealed a more significant eGFR decline and a higher risk of accelerated kidney function decline than those who consumed none to 1 cup/day (38). Renata et al. also demonstrated that high caffeine intake exacerbates renal fibrosis and apoptosis in a mouse model that is homologous to human disease (Pkd1cond/cond:Nestincrc) (39). A cohort study that included 407 participants with AER records both at baseline and end of follow-up found that the risk of developing albuminuria (AER >30 mg/24 h) in slow metabolizers increased significantly for heavy coffee drinkers(40). A systematic review of two subsamples of atherosclerosis risk in communities detected coffee-associated metabolites positively associated with coffee consumption and higher risk for incident CKD (41). In a meta-analysis of two subsamples from an atherosclerosis risk study, William J et al. identified 41 unique metabolites associated with coffee consumption, of which O-methyl catechol sulfate and 3-methyl catechol sulfate were significantly and positively associated with CKD risk (41). Another Mendelian randomization study found coffee intake, particularly instant coffee, have an important role in shortening telomere length (42). Studies have shown that patients with advanced nephropathy in type 1 diabetes have faster telomere shortening than patients with non-advanced nephropathy. Similar situation is also found in in type 2 diabetes (43). So, coffee seems to

be a risk factor for diabetic nephropathy, which was consistent with the results of our Mendelian randomization study.

Due to the drug resistance, adverse effects, and even toxicity of antidiabetic drugs, dietetic therapy is a new direction in treating diabetes (44). In recent years, there has been a proliferation of studies on the relationship between coffee consumption and the progression of diabetes and chronic kidney disease. Several short-term randomized controlled trials and epidemiological studies have explored the association between coffee consumption and the risk of T2DM. These studies have shown that heavy coffee consumption improves glucose tolerance and reduces the risk of T2DM (18, 45). Recently, a meta-analysis of cohort studies on Coffee consumption and mortality in patients with type 2 diabetes illustrated inverse associations between coffee consumption and the risk of mortality from all-cause, CVD, and CHD (46). Less than five studies were available for the analyses of mortality in patients with type 2 diabetes, thus leading to some confounding factors, selection bias, and information bias in the traditional epidemiologic study and making the relationship between coffee intake and diabetes remains elusive and needs further exploration. The causal link between coffee and diabetic nephropathy is still debatable because of the variety of diabetic nephropathy pathogenesis that is impacted by consumption of coffee. The primary cause of this disagreement may be the difficulty in obtaining deterministic causation in perspective and cross-sectional research due to confounding variables, including environment and selection bias.

Our present study reported a positive association between coffee intake and the risk of diabetic nephropathy, which is a significant cause of chronic kidney diseases in the elderly. There are several plausible mechanisms. First of all, caffeine is a widely recognised stimulant of the central nervous system and a significant xanthine alkaloid present in many common drinks, especially coffee (*Coffea arabica* and *Coffea*) (46). James et al. reported in a controlled clinical trial that regular caffeine consumption raises chronic glucose levels. Additionally, caffeine abstinence may enhance normal glucose control in patients with type 2 diabetes who consume daily coffee (47). Additionally, according to a cohort study, excessive coffee consumption was

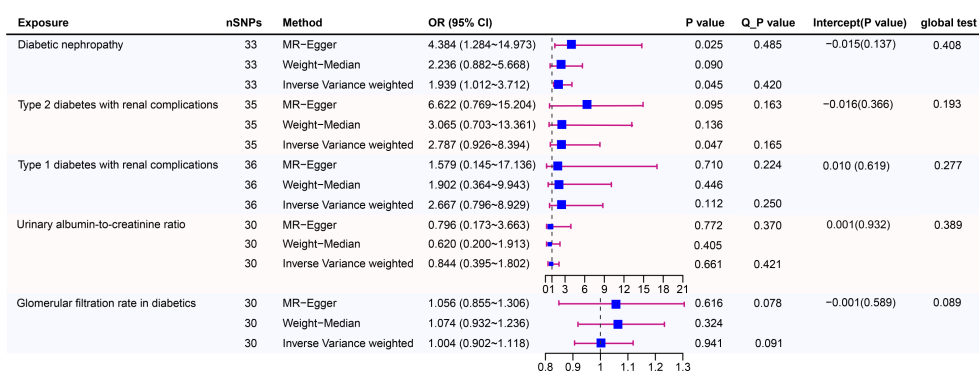


FIGURE 3 Causal risk between coffee intake and Diabetic Nephropathy was estimated using conventional inverse variance weighted (IVW) Mendelian randomization analysis, Egger-Mendelian randomization (MR-Egger), and weighted median Mendelian randomization. Forest plot and sensitivity analysis of Mendelian randomization analyses showing the effect of coffee intake on the risk of diabetic nephropathy.

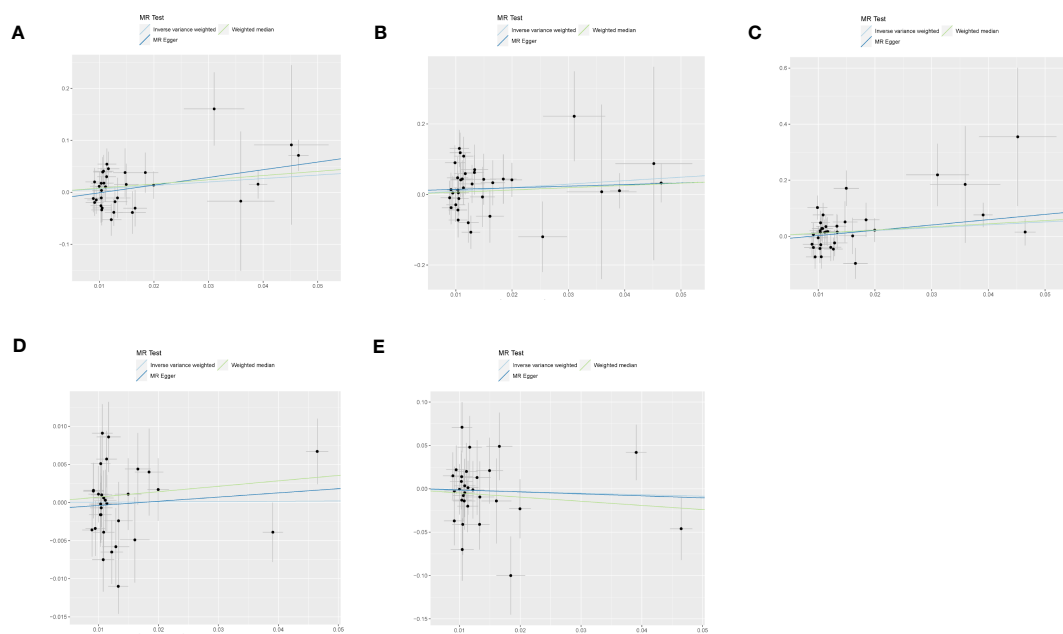


FIGURE 4

The scatter plot for MR analyses of causal associations between each coffee intake SNP and Diabetic nephropathy (A), type 1 diabetes with renal complications (B), type2 diabetes with renal complications (C), glomerular filtration rate in diabetics (D), urinary albumin-to-creatinine ratio (E).

associated with albuminuria 2.8 years earlier than minimal coffee consumption (40). More than 95% of caffeine is metabolised by cytochrome P450 1A2 (CYP1A2), and a common CYP1A2 gene polymorphism has been linked to caffeine metabolism (48). Those with the AC and CC genotypes of CYP1A2 at rs762551, which are associated with a sluggish metabolism of caffeine, will be more at risk for albuminuria and hyperfiltration with heavy coffee intake (40). So it is of vital importance to reduce the risk of diabetic nephropathy with DNA-based interventions, such as precision nutrition recommendations. Moreover, caffeine is an adenosine receptor antagonist. When ingested, it binds to adenosine receptors (49–51) and interfered with adenosine's anti-inflammatory and glomerular hemodynamic effects, resulting in albuminuria, glomerular remodelling and sclerosis (26, 27). In addition, most coffee drinks and instant coffee are loaded with refined sugars or coffee mate, which can lead to elevated blood sugar and hyperkalemia over time. Potassium is considered by influencing the body renal interstitial fibrosis and blood pressure level, oxidative stress and poor nutrition, such as mechanism, and hyperkalemia and hypokalemia short-term cause arrhythmia, indirect influence on the prognosis of patients with diabetic (52, 53).

Mendelian randomization (MR) is a statistical technique that uses genetic variants as proxies for modifiable risk factors to test causal relationships between a risk factor and an outcome, which may surmount some of the limitations inherent in traditional epidemiologic studies (54). As far as we're aware, the present study is the first large-scale Mendelian randomization study of coffee intake and diabetic nephropathy. To address the bias issue, this study chose the GWAS data set with the most notable coffee intake and diabetic nephropathy participants. Then it examined 38 SNPs. 3 SNPs were excluded with MR-PRESSO outlier test ($P < 1$) and 2 SNPs were

excluded with PhenoScanner V2 to reduce bias and guarantee the reliability and validity of MR analysis. The IVW method showed that coffee intake increase was causally associated with a substantial increase in the risk of diabetic nephropathy especially type 2 diabetes. Multiple MR estimates and sensitivity analyses, including MR Egger, Cochran's Q test, MR-PRESSO, and leave-one-out analysis, demonstrated that the results were reliable.

There were several strengths to our study. Firstly, the major merit is the MR design, which can help reduce the risk of confounding and reverse causal association, a significant limitation of observational studies. Secondly, we examined these correlations in 5 independent populations, and the consistent results ensured the reliability and validity of the study. In addition, several shortcomings also exist in this study. First, our study had a relatively small sample size and event number compared to population-based observational research although we selected the GWAS dataset with the largest sample size and the latest date in our MR analysis. Secondly, the population of individuals we included was all European ancestries. There is a population bias in the study, and the results do not applied to the whole people. The causal relationship between coffee intake and diabetic nephropathy should be further investigated with the inclusion of more pedigree populations. Thirdly, demographic characteristics and detailed clinical information about the included population were unavailable in the GWAS database, and subgroup analysis could not be performed statistically due to the insufficiency of the data. Subgroup analysis of the coffee intake, for example, <1 cup per day, 1-5 cups per day, and > 5 cups per day, must be further considered for a more accurate and reliable conclusion. In addition, the exposure and outcome data may have substantial sample overlap, which could lead the model to be overfitted and the estimate of causality to be too heavily towards observational relationships. And MR analysis implies a

linear relationship between exposure and outcome, which may not be accurate in all cases, limiting the method's ability to detect non-linear effects and the interpretation of the results.

Conclusion

To summarize, our MR analysis revealed a positive correlation between coffee intake and the risk of diabetic nephropathy from a limited perspective, corresponding to previous investigations that have described a crucial biological role for coffee in the progression of kidney dysfunction. In-depth and finer-scale whole-genome sequencing is needed better to characterize the causality between coffee intake and diabetic nephropathy. In the meantime, we look forward to conducting prospective, multicenter, large-sample, randomized controlled trials with longer follow-up time to clarify this association as soon as possible and achieving individualized treatment and precision medicine in diet therapy of diabetic nephropathy.

Data availability statement

The original contributions presented in the study are included in the article/**Supplementary Material**. Further inquiries can be directed to the corresponding authors.

Ethics statement

A publicly available GWAS catalog was used to conduct a two-sample MR study. Due to the re-analysis of previously summarized data, no additional ethical approval was required.

Author contributions

JF and KS drafted the protocol, performed MR analysis and wrote the final paper. LY, DZ and HZ contributed to figure and table drawing and interpretation of results. JJ and QH contributed to the analysis and interpretation of data, as well as the critical review of the manuscript's intellectually significant content. Each author contributed to the article and authorized the version that was submitted. All authors contributed to the article and approved the submitted version.

References

1. Lu Z, Zhong Y, Liu W, Xiang L, Deng Y. The efficacy and mechanism of Chinese herbal medicine on diabetic kidney disease. *J Diabetes Res* (2019) 2019:2697672. doi: 10.1155/2019/2697672
2. Sandholm N, Salem RM, McKnight AJ, Brennan EP, Forsblom C, Isakova T, et al. New susceptibility loci associated with kidney disease in type 1 diabetes. *PLoS Genet* (2012) 8(9):e1002921. doi: 10.1371/journal.pgen.1002921
3. Lu Y, Wang Y, Ong CN, Subramaniam T, Choi HW, Yuan JM, et al. Metabolic signatures and risk of type 2 diabetes in a Chinese population: an untargeted metabolomics study using both. *Diabetologia* (2016) 59(11):2349–59. doi: 10.1007/s00125-016-4069-2
4. Azushima K, Gurley SB, Coffman TM. Modelling diabetic nephropathy in mice. *Nat Rev Nephrol* (2018) 14(1):48–56. doi: 10.1038/nrneph.2017.142
5. Lim JH, Kim HW, Kim MY, Kim TW, Kim EN, Kim Y, et al. Cinacalcet-mediated activation of the CaMKK β -LKB1-AMPK pathway attenuates diabetic nephropathy in db/db mice by modulation of apoptosis and autophagy. *Cell Death Dis* (2018) 9(3):270. doi: 10.1038/s41419-018-0324-4
6. Ludwig IA, Clifford MN, Lean ME, Ashihara H, Crozier A. Coffee: biochemistry and potential impact on health. *Food Funct* (2014) 5(8):1695–717. doi: 10.1039/C4FO00042K
7. Butt MS, Sultan MT. Coffee and its consumption: benefits and risks. *Crit Rev Food Sci Nutr* (2011) 51(4):363–73. doi: 10.1080/10408390903586412
8. Akash MS, Rehman K, Chen S. Effects of coffee on type 2 diabetes mellitus. *Nutrition* (2014) 30(7-8):755–63. doi: 10.1016/j.nut.2013.11.020
9. Zhang Z, Hu G, Caballero B, Appel L, Chen L. Habitual coffee consumption and risk of hypertension: a systematic review and meta-analysis of prospective observational studies. *Am J Clin Nutr* (2011) 93(6):1212–9. doi: 10.3945/ajcn.110.004044

Funding

This work was supported by grants from the Key project of Basic Scientific Research Operating Funds of Hangzhou Medical College (KYZD202002).

Acknowledgments

Genetic instruments for coffee intake were obtained from the UK Biobank; Genetic association estimates for diabetic nephropathy, type 1 diabetes with renal complications, and type 2 diabetes with renal complications were obtained from the FinnGen consortium. The GWAS summary data for glomerular filtration rate in diabetics were extracted from a discovery GWAS meta-analysis of up to 133,413 individuals of European ancestry. We drew the **Figure 1** by Figdraw (www.figdraw.com). We sincerely thank all investigators for sharing these data and the free drawing support provided by the Figdraw platform.

Conflict of interest

The authors declare that the research was conducted in the absence of any commercial or financial relationships that could be construed as a potential conflict of interest.

Publisher's note

All claims expressed in this article are solely those of the authors and do not necessarily represent those of their affiliated organizations, or those of the publisher, the editors and the reviewers. Any product that may be evaluated in this article, or claim that may be made by its manufacturer, is not guaranteed or endorsed by the publisher.

Supplementary material

The Supplementary Material for this article can be found online at: <https://www.frontiersin.org/articles/10.3389/fendo.2023.1169933/full#supplementary-material>

10. Ding M, Bhupathiraju SN, Satija A, van Dam RM, Hu FB. Long-term coffee consumption and risk of cardiovascular disease: a systematic review and a dose-response meta-analysis of prospective cohort studies. *Circulation* (2014) 129(6):643–59. doi: 10.1161/CIRCULATIONAHA.113.005925
11. Korpelainen R, Korpelainen J, Heikkinen J, Väänänen K, Keinänen-Kiukkaanniemi S. Lifestyle factors are associated with osteoporosis in lean women but not in normal and overweight women: a population-based cohort study of 1222 women. *Osteoporos Int* (2003) 14(1):34–43. doi: 10.1007/s00198-002-1319-6
12. Nawrot P, Jordan S, Eastwood J, Rotstein J, Hugenholtz A, Feeley M. Effects of caffeine on human health. *Food Addit Contam* (2003) 20(1):1–30. doi: 10.1080/0265203021000007840
13. van Dam RM, Pasman WJ, Verhoef P. Effects of coffee consumption on fasting blood glucose and insulin concentrations: randomized controlled trials in healthy volunteers. *Diabetes Care* (2004) 27(12):2990–2. doi: 10.2337/diacare.27.12.2990
14. Barranco Quintana JL, Allam MF, Serrano Del Castillo A, Fernández-Crehuet Navajas R. Alzheimer's disease and coffee: a quantitative review. *Neurol Res* (2007) 29(1):91–5. doi: 10.1179/174313206X152546
15. Huxley R, Lee CM, Barzi F, Timmermeister L, Czernichow S, Perkovic V, et al. Coffee, decaffeinated coffee, and tea consumption in relation to incident type 2 diabetes mellitus: a systematic review with meta-analysis. *Arch Intern Med* (2009) 169(22):2053–63. doi: 10.1001/archinternmed.2009.439
16. Hall S, Desbrow B, Anoopkumar-Dukie S, Davey AK, Arora D, McDermott C, et al. A review of the bioactivity of coffee, caffeine and key coffee constituents on inflammatory responses linked to depression. *Food Res Int* (2015) 76(Pt 3):626–36. doi: 10.1016/j.foodres.2015.07.027
17. Medeiros MS, Schumacher-Schuh AF, Altmann V, Rieder CRM. A case-control study of the effects of chimarrão (*Ilex paraguariensis*) and coffee on parkinson's disease. *Front Neurol* (2021) 12:619535. doi: 10.3389/fneur.2021.619535
18. Bidel S, Silventoinen K, Hu G, Lee DH, Kaprio J, Tuomilehto J. Coffee consumption, serum gamma-glutamyltransferase and risk of type II diabetes. *Eur J Clin Nutr* (2008) 62(2):178–85. doi: 10.1038/sj.ejcn.1602712
19. Hu EA, Selvin E, Grams ME, Steffen LM, Coresh J, Rebholz CM. Coffee consumption and incident kidney disease: results from the atherosclerosis risk in communities (ARIC) study. *Am J Kidney Dis* (2018) 72(2):214–22. doi: 10.1053/j.ajkd.2018.01.030
20. Jhee JH, Nam KH, An SY, Cha MU, Lee M, Park S, et al. Effects of coffee intake on incident chronic kidney disease: a community-based prospective cohort study. *Am J Med* (2018) 131(12):1482–1490.e3. doi: 10.1016/j.amjmed.2018.05.021
21. Kennedy OJ, Pirastu N, Poole R, Fallowfield JA, Hayes PC, Grzeszkowiak EJ, et al. Coffee consumption and kidney function: a mendelian randomization study. *Am J Kidney Dis* (2020) 75(5):753–61. doi: 10.1053/j.ajkd.2019.08.025
22. Lew QJ, Jafar TH, Jin A, Yuan JM, Koh WP. Consumption of coffee but not of other caffeine-containing beverages reduces the risk of end-stage renal disease in the Singapore Chinese health study. *J Nutr* (2018) 148(8):1315–22. doi: 10.1093/jn/nxy075
23. Gaeini Z, Bahadoran Z, Mirmiran P, Azizi F. Tea, coffee, caffeine intake and the risk of cardio-metabolic outcomes: findings from a population with low coffee and high tea consumption. *Nutr Metab (Lond)* (2019) 16:28. doi: 10.1186/s12986-019-0355-6
24. Graham TE, Sathasivam P, Rowland M, Marko N, Greer F, Battram D. Caffeine ingestion elevates plasma insulin response in humans during an oral glucose tolerance test. *Can J Physiol Pharmacol* (2001) 79(7):559–65. doi: 10.1139/y01-026
25. Moisey LL, Kacker S, Bickerton AC, Robinson LE, Graham TE. Caffeinated coffee consumption impairs blood glucose homeostasis in response to high and low glycemic index meals in healthy men. *Am J Clin Nutr* (2008) 87(5):1254–61. doi: 10.1093/ajcn/87.5.1254
26. Wierema TK, Houben AJ, Kroon AA, Postma CT, Koster D, van Engelshoven JM, et al. Mechanisms of adenosine-induced renal vasodilatation in hypertensive patients. *J Hypertens* (2005) 23(9):1731–6. doi: 10.1097/01.hjh.0000180160.89264.9d
27. Trovato GM, Pirri C, Martines GF, Trovato F, Catalano D. Coffee, nutritional status, and renal artery resistive index. *Ren Fail* (2010) 32(10):1137–47. doi: 10.3109/0886022X.2010.516853
28. Davies NM, Holmes MV, Davey Smith G. Reading mendelian randomisation studies: a guide, glossary, and checklist for clinicians. *Bmj* (2018) 362:k601. doi: 10.1136/bmj.k601
29. Guo Q, Burgess S, Turman C, Bolla MK, Wang Q, Lush M, et al. Body mass index and breast cancer survival: a mendelian randomization analysis. *Int J Epidemiol* (2017) 46(6):1814–22. doi: 10.1093/ije/dyx131
30. Pattaro C, Teumer A, Gorski M, Chu AY, Li M, Mijatovic V, et al. Genetic associations at 53 loci highlight cell types and biological pathways relevant for kidney function. *Nat Commun* (2016) 7:10023. doi: 10.1038/ncomms10023
31. Burgess S, Butterworth A, Thompson SG. Mendelian randomization analysis with multiple genetic variants using summarized data. *Genet Epidemiol* (2013) 37(7):658–65. doi: 10.1002/gepi.121758
32. Hemani G, Zheng J, Elsworth B, Wade KH, Haberland V, Baird D, et al. The MR-base platform supports systematic causal inference across the human genome. *Elife* (2018) 7. doi: 10.7554/eLife.34408
33. Bowden J, Davey Smith G, Haycock PC, Burgess S. Consistent estimation in mendelian randomization with some invalid instruments using a weighted median estimator. *Genet Epidemiol* (2016) 40(4):304–14. doi: 10.1002/gepi.21965
34. Burgess S, Bowden J, Fall T, Ingelsson E, Thompson SG. Sensitivity analyses for robust causal inference from mendelian randomization analyses with multiple genetic variants. *Epidemiology* (2017) 28(1):30–42. doi: 10.1097/EDE.0000000000000559
35. Skrivanekova VW, Richmond RC, Woolf BAR, Yarmolinsky J, Davies NM, Swanson SA, et al. Strengthening the reporting of observational studies in epidemiology using mendelian randomization: the STROBE-MR statement. *Jama* (2021) 326(16):1614–21. doi: 10.1001/jama.2021.18236
36. Shi X, Xue W, Liang S, Zhao J, Zhang X. Acute caffeine ingestion reduces insulin sensitivity in healthy subjects: a systematic review and meta-analysis. *Nutr J* (2016) 15(1):103. doi: 10.1186/s12937-016-0220-7
37. Reis CEG, Dórea JG, da Costa THM. Effects of coffee consumption on glucose metabolism: a systematic review of clinical trials. *J Tradit Complement Med* (2019) 9(3):184–91. doi: 10.1016/j.jtcme.2018.01.001
38. Díaz-López A, Paz-Graniel I, Ruiz V, Toledo E, Becerra-Tomás N, Corella D, et al. Consumption of caffeinated beverages and kidney function decline in an elderly Mediterranean population with metabolic syndrome. *Sci Rep* (2021) 11(1):8719. doi: 10.1038/s41598-021-88028-7
39. Meca R, Balbo BE, Ormanji MS, Fonseca JM, Iannuzzi LR, Santana Costa E, et al. Caffeine accelerates cystic kidney disease in a Pkd1-deficient mouse model. *Cell Physiol Biochem* (2019) 52(5):1061–74. doi: 10.33594/000000072
40. Mahdavi S, Palatini P, El-Sohehy A. CYP1A2 genetic variation, coffee intake, and kidney dysfunction. *JAMA Netw Open* (2023) 6(1):e2247868. doi: 10.1001/jamanetworkopen.2022.47868
41. He WJ, Chen J, Razavi AC, Hu EA, Grams ME, Yu B, et al. Metabolites associated with coffee consumption and incident chronic kidney disease. *Clin J Am Soc Nephrol* (2021) 16(11):1620–9. doi: 10.2215/CJN.05520421
42. Fyhrquist F, Tiitu A, Sajjonmaa O, Forsblom C, Groop PH. Telomere length and progression of diabetic nephropathy in patients with type 1 diabetes. *J Intern Med* (2010) 267(3):278–86. doi: 10.1111/j.1365-2796.2009.02139.x
43. Tentolouris N, Nzietchueng R, Cattani V, Poitevin G, Lacolley P, Papazafropoulou A, et al. White blood cells telomere length is shorter in males with type 2 diabetes and microalbuminuria. *Diabetes Care* (2007) 30(11):2909–15. doi: 10.2337/dc07-0633
44. Waterman C, Rojas-Silva P, Tumer TB, Kuhn P, Richard AJ, Wicks S, et al. Isothiocyanate-rich moringa oleifera extract reduces weight gain, insulin resistance, and hepatic gluconeogenesis in mice. *Mol Nutr Food Res* (2015) 59(6):1013–24. doi: 10.1002/mnfr.201400679
45. Brailon A. E-cigarettes and the youngest, not a problem in Europe: no data yet. *Am J Prev Med* (2018) 54(4):e79. doi: 10.1016/j.amepre.2017.12.008
46. Shahinfar H, Jayedi A, Khan TA, Shab-Bidar S. Coffee consumption and cardiovascular diseases and mortality in patients with type 2 diabetes: a systematic review and dose-response meta-analysis of cohort studies. *Nutr Metab Cardiovasc Dis* (2021) 31(9):2526–38. doi: 10.1016/j.numecd.2021.05.014
47. Lane JD, Hwang AL, Feinglos MN, Surwit RS. Exaggeration of postprandial hyperglycemia in patients with type 2 diabetes by administration of caffeine in coffee. *Endocr Pract* (2007) 13(3):239–43. doi: 10.4158/EP.13.3.239
48. Sachse C, Brockmüller J, Bauer S, Roots I. Functional significance of a c->A polymorphism in intron 1 of the cytochrome P450 CYP1A2 gene tested with caffeine. *Br J Clin Pharmacol* (1999) 47(4):445–9. doi: 10.1046/j.1365-2125.1999.00898.x
49. Yu H, Yang T, Gao P, Wei X, Zhang H, Xiong S, et al. Caffeine intake antagonizes salt sensitive hypertension through improvement of renal sodium handling. *Sci Rep* (2016) 6:25746. doi: 10.1038/srep25746
50. Wilk M, Filip A, Krzysztofik M, Maszczyk A, Zajac A. The acute effect of various doses of caffeine on power output and velocity during the bench press exercise among athletes habitually using caffeine. *Nutrients* (2019) 11(7):1465. doi: 10.3390/nu11071465
51. Scholtes RA, Muskiet MHA, van Baar MJB, Hesp AC, Greasley PJ, Karlsson C, et al. Natriuretic effect of two weeks of dapagliflozin treatment in patients with type 2 diabetes and preserved kidney function during standardized sodium intake: results of the DAPASALT trial. *Diabetes Care* (2021) 44(2):440–7. doi: 10.2337/dc20-2604
52. Einhorn LM, Zhan M, Hsu VD, Walker LD, Moen MF, Seliger SL, et al. The frequency of hyperkalemia and its significance in chronic kidney disease. *Arch Intern Med* (2009) 169(12):1156–62. doi: 10.1001/archinternmed.2009.132
53. Tanaka K, Saito H, Iwasaki T, Oda A, Watanabe S, Kanno M, et al. Association between serum potassium levels and adverse outcomes in chronic kidney disease: the fukushima CKD cohort study. *Clin Exp Nephrol* (2021) 25(4):410–7. doi: 10.1007/s10157-020-02010-7
54. Beeghly-Fadiel A, Khankari NK, Delahanty RJ, Shu XO, Lu Y, Schmidt MK, et al. A mendelian randomization analysis of circulating lipid traits and breast cancer risk. *Int J Epidemiol* (2020) 49(4):1117–31. doi: 10.1093/ije/dy2242