



# Spexin and a Novel Cichlid-Specific Spexin Paralog Both Inhibit FSH and LH Through a Specific Galanin Receptor (Galr2b) in Tilapia

Yaron Cohen<sup>1</sup>, Krist Hausken<sup>1</sup>, Yoav Bonfil<sup>1</sup>, Michael Gutnick<sup>2</sup> and Berta Levavi-Sivan<sup>1\*</sup>

<sup>1</sup> Department of Animal Sciences, Hebrew University of Jerusalem, Rehovot, Israel, <sup>2</sup> The Robert H. Smith Faculty of Agriculture, Food, and Environment, Koret School of Veterinary Medicine, Hebrew University of Jerusalem, Rehovot, Israel

## OPEN ACCESS

### Edited by:

Vance L. Trudeau,  
University of Ottawa, Canada

### Reviewed by:

Anderson O. L. Wong,  
The University of Hong Kong,  
Hong Kong  
Zvi Naor,  
Tel Aviv University, Israel

### \*Correspondence:

Berta Levavi-Sivan  
berta.sivan@mail.huji.ac.il

### †ORCID:

Berta Levavi-Sivan  
0000-0002-0183-9524

### Specialty section:

This article was submitted to  
Neuroendocrine Science,  
a section of the journal  
Frontiers in Endocrinology

**Received:** 19 November 2019

**Accepted:** 03 February 2020

**Published:** 20 February 2020

### Citation:

Cohen Y, Hausken K, Bonfil Y,  
Gutnick M and Levavi-Sivan B (2020)  
Spexin and a Novel Cichlid-Specific  
Spexin Paralog Both Inhibit FSH and  
LH Through a Specific Galanin  
Receptor (Galr2b) in Tilapia.  
Front. Endocrinol. 11:71.  
doi: 10.3389/fendo.2020.00071

Spexin (SPX) is a 14 amino acid peptide hormone that has pleiotropic functions across vertebrates, one of which is involvement in the brain-pituitary-gonad axis of fish. SPX(1) has been identified in each class of vertebrates, and a second SPX (named SPX2) has been found in some non-mammalian species. We have cloned two spexin paralogs, designated as Spx1a and Spx1b, from Nile tilapia (*Oreochromis niloticus*) that have varying tissue distribution patterns. Spx1b is a novel peptide only identified in cichlid fish, and is more closely related to Spx1 than Spx2 homologs as supported by phylogenetic, synteny, and functional analyses. Kisspeptin, Spx, and galanin (Gal) peptides and their corresponding kiss receptors and Gal receptors (Galrs), respectively, are evolutionarily related. Cloning of six tilapia Galrs (Galr1a, Galr1b, Galr2a, Galr2b, Galr type 1, and Galr type 2) and subsequent *in vitro* second-messenger reporter assays for  $G\alpha_s$ ,  $G\alpha_q$ , and  $G\alpha_i$  suggests that Gal and Spx activate Galr1a/Galr2a and Galr2b, respectively. A decrease in plasma follicle stimulating hormone and luteinizing hormone concentrations was observed with injections of Spx1a or Spx1b *in vivo*. Additionally, application of Spx1a and Spx1b to pituitary slices decreased the firing rate of LH cells, suggesting that the peptides can act directly at the level of the pituitary. These data collectively suggest an inhibitory mechanism of action against the secretion of gonadotropins for a traditional and a novel spexin paralog in cichlid species.

**Keywords:** spexin, follicle stimulating hormone, luteinizing hormone, galanin receptors, gonadotroph, tilapia

## INTRODUCTION

Spexin (SPX1; also termed neuropeptide Q) was identified first by computational methods in humans (1), and then also by chemical methods in goldfish (2). These computational methods have been attempted mostly on the basis of the characteristics of the prohormones from which active neuropeptides are processed. The mature peptide sequence contains 14 amino acids that are flanked by monobasic and dibasic proteolytic cleavage sites. The mature spexin peptide was found to be identical in all tetrapods and elephant shark, and differs in only one amino acid (A<sup>13</sup>T) in piscine species. A paralog of spexin, termed Spx2, was later identified in non-mammalian species (3). In mammals, Spx was found to participate in inducing stomach contraction (1), inhibiting adrenocortical cell proliferation (4), postnatal hypoxia response (5), cardiovascular and renal modulation (6), nociceptive response (7), fatty acid absorption and weight regulation (8), and

diabetes (9). In teleosts, functional studies of Spx1 mainly focused on its inhibitory role in the regulation of reproduction (10) and food intake (2, 11). However, a recent study reported that *spx1* knock-out zebrafish exhibited normal reproductive capability but higher food intake than wild type fish, an effect mediated via increased expression of the appetite stimulant, agouti-related peptide AgRP1 (12).

The galanergic neurotransmission system is one of the newest described signaling systems. Today, the galanin family consists of galanin (Gal), galanin-like peptide (GalP), galanin-message associated peptide (GMAP), and alarin, and this family has been shown to be involved in a wide variety of biological and pathological functions (13). Three different types of galanin receptors have been described so far in mammals: galanin receptor 1, 2, and 3 (GALR1, GALR2, and GALR3) (14). All of them are members of the G protein-coupled receptor (GPCR) family and act through stimulation of various second messenger systems. The biological activity of GALR1 and GALR3 stimulation is linked to the activity of adenylate cyclase (AC) and cyclic AMP (cAMP) production, and stimulation of GALR2 receptor results in phospholipase C (PLC) activity (14). Recently, it was reported that SPX is a functional agonist for GALR2 and GALR3 in humans as well as Galr2a and Galr2b in zebrafish (15).

Reproduction is regulated by the hypothalamic-pituitary-gonadal (HPG) axis in all vertebrates. Hypothalamic axons secrete neuropeptides into the gonadotroph cells of the pituitary in order to mediate the expression and secretion of the gonadotropins follicle-stimulating hormone (FSH) and luteinizing hormone (LH) (16). The first identified neuropeptide that regulates this function was gonadotropin-releasing hormone (GnRH). The hypophysiotrophic type of GnRH regulates gonadotropins by neuroendocrine and neurovascular anatomical connections in zebrafish (17, 18). Recently, a plethora of neuropeptides involved in the control of reproduction were investigated. Most of them are stimulatory neuropeptides, such as neurokinin B (19), neuropeptide Y (20), secretoneurin (21), galanin (22), agouti-related peptide (23), kisspeptin (24), and melanocortin (25). However, the study of neuropeptides that relay their signal through inhibitory pathways is more challenging, and hence are less studied. The most known inhibitory pathway in fish reproduction is the dopaminergic system (26). In fish, as in mammals, dopamine D2 receptors transduce their signal through an inhibitory ( $G\alpha_i$ ) signaling pathway (27).  $G\alpha_i$  signaling is involved in a variety of physiologic processes, including chemotaxis, neuro-transmission, proliferation, hormone secretion, and analgesia (28).

Nile tilapia is one of the top principal aquaculture species, and is a suitable experimental model fish for reproductive endocrinological research on Perciformes, which is the most recently evolved and largest group of teleost fish that includes many other target aquaculture species. Our objective was to identify spexin in tilapia and clarify its role as a regulator in the HPG axis. This was accomplished by cloning two spexin and six Galr sequences, and performing *in vitro* and *in vivo* studies.

## MATERIALS AND METHODS

### Fish Husbandry and Transgenic Lines

Sexually mature Nile tilapia (*Oreochromis niloticus*, Lake Manzala strain) were kept and bred in the fish facility unit at the Hebrew University in 500-L tanks at 26°C and with a 14/10 h light/dark photoperiod regime. Fish were fed daily *ad libitum* with commercial fish pellets (Raanan fish feed, Israel).

We previously created transgenic tilapia lines by the adoption of a tol2 transposon-mediated approach and Gateway cloning technology (29). In the current study we used transgenic tilapia in which red fluorescent protein (RFP) expression is driven by the tilapia LH $\beta$  promoter, thus labeling LH gonadotrophs. The tagRFP-CAAX cassette, used in the current study directs the fluorescent protein to the cell membranes. The use of tagRFP eliminates the aggregation problems associated with mCherry and results in a more uniform labeling of the cells.

All experimental procedures were in compliance with the Animal Care and Use guidelines of the Hebrew University and were approved by the local Administrative Panel on Laboratory Animal Care.

### Cloning and Tissue Distribution of Tilapia Spexin Ligands and Receptors

The putative spexin 1a and 1b gene sequences were initially identified using tblastn against the tilapia genome (*O\_niloticus\_wgs\_v1*, Genbank 354508) with zebrafish spexin (XM\_005164774) as input, and custom full coding sequence primers were designed for PCR. Primers were designed against the nucleic acid sequences of the six galanin receptors (Galr1a, Galr1b, Galr2a, Galr2b, Galr type 1, and Galr type 2) obtained from the Ensembl Genome Browser (<http://www.ensembl.org>) and the GenBank database (<http://www.ncbi.nlm.nih.gov/genbank>). Putative transmembrane domains, glycosylation sites, and phosphorylation sites were identified using TMHMM v.2.0, NetNGlyc 1.0 (30), and NetPhos 2.0 (31).

Total RNA was extracted from sexually mature female tilapia brain using TRIzol reagent (Life Technologies), and 5  $\mu$ g was used as template for cDNA synthesis using Smart MMLV reverse transcriptase (Clontech). All cloning PCRs were performed with an initial denaturation at 94°C for 2.5 min, followed by 30 cycles of denaturation at 94°C for 30 s, annealing at each of the primers' specific  $T_m$  (**Table 1**) for 30 s, and extension at 72°C for 90 s, and a final extension at 72 °C for 10 min using Advantage 2 polymerase mix (Clontech); specific primers were designed for cloning the putative spexin ligands and receptors (**Table 1**). The PCR products were ligated into pCRII-TOPO vector and cloned into competent DH5 $\alpha$  *E. coli* cells. Plasmid DNA was isolated from overnight cultures by miniprep columns (QIAGEN) and sequenced with T7 and SP6 primers.

Cloned tilapia spexin 1a and 1b sequences were submitted to GenBank under accession numbers MN399812 and MN399813, respectively. Cloned tilapia galanin receptors sequences were submitted to GenBank under accession numbers MN326828, MN326829, MN326830, MN326831, MN614146, and MN614147 for Galr1a, Galr1b, Galr2a, Galr2b, Galr type 1, and Galr type 2, respectively.

**TABLE 1** | Gene-specific primers used for the identification of tilapia Spx peptides and Galrs.

Primer	5'-3' sequence	Direction	Gene	T <sub>m</sub> (°C)
1	ATGAACTTGACAGACTCTGTTGGCT	Forward	Galr1a	64
2	TCAAACATTTGTGCAGTTAGTTGAGG	Reverse		
3	ATGGCGCTGTCGGAAAAC	Forward	Galr1b	63
4	TCATATGTTGGTGGTGGAGTGT	Reverse		
5	ATGAATGACTCTGTGCTAACTCCTCC	Forward	Galr2a	62
6	TTAATTGGACACATCGATGCTG	Reverse		
7	ATGTCAGACTTTGAGGATTTACCT	Forward	Galr2b	64
8	TCAAGTCTGCTGCTGCTGAAAG	Reverse		
9	ATGGAGAGTTCCGGGCGAG	Forward	Galr type 1	65
10	TCAGTTTTGGCTTCTCCCTGAG	Reverse		
11	ATGGCTGTTCCCAACACCTATG	Forward	Galr type 2	66
12	CTAAAGGCTGTCTGTGGTAACGCT	Reverse		
13	ATGAAGGGTTTGAAGACCGTCACA	Forward	Spx1a	60
14	TTAGAAATATCCCTCTCCACACTGGTA	Reverse		59
15	GCAGGAGAGCACACGCTTAAAG	Forward	Spx1b	65
16	GCTCTGATGAATGTTCAAGTGG	Reverse		65

The primers sequences and their melting temperatures used for the PCR are presented.

Tissue samples were collected from three mature male and female tilapia. Total RNA was extracted from each of the following tissues: brain, pituitary gland, spleen, gills, kidneys, muscles, fat, ovaries/testes, retina, heart, caudal and front intestines, and liver. We dissected the brain into three parts, of which the anterior part contains the olfactory bulbs and preoptic area, the midbrain contains the optic tectum and hypothalamus, and the hindbrain contains the medulla oblongata and the cerebellum. cDNA samples were prepared from 2 µg of total RNA according to (24). The tissue expression patterns of Spx1a, Spx1b, Galr1a, Galr1b, Galr2a, and Galr2b in various tissues were analyzed by qPCR with the primer sets described in **Table 2**. The cycling parameters consisted of pre-incubation at 95°C for 10 min followed by 45 cycles of denaturation at 95°C for 10 s, annealing at 60°C for 30 s, and extension at 72°C for 10 s, followed by a melting curve analysis (95°C for 60 s, 65°C for 60 s, 97°C for 1 s).

## Phylogenetic and Synteny Analyses

All sequences used for spexin and galanin receptors were identified from NCBI and Ensembl databases (**Supplementary Table 1**) and aligned by MUSCLE using Mega7. Evolutionary analyses were conducted in MEGA7 (32). The evolutionary history of mature spexin peptide homologs was inferred using the Maximum Likelihood method based on the JTT matrix-based model, and an additional frequency distribution (JTT+F) was utilized for the receptors (33). The bootstrap consensus trees were inferred from 500 replicates to represent the evolutionary history of the taxa analyzed (34). The percentage of replicate trees in which the associated taxa clustered together in the bootstrap test are shown next to the branches. Initial tree(s) for the heuristic search were obtained automatically by applying Neighbor-Join and BioNJ algorithms

**TABLE 2** | Gene-specific primers used for real-time PCR.

Primer	5'-3' sequence	Direction	Gene	Efficiency
1	GAAAAAGACTGCTCAGACGGTG	Forward	Galr 1a	1.82
2	GTTTAGCGGGAAGTCCCAA	Reverse		
3	TGTTGGGGTACCTGCTACCG	Forward	Galr 1b	1.94
4	GAGGACCGTCTGAGCCGTT	Reverse		
5	TGGACAGGTATTTAGCCATTTGC	Forward	Galr 2a	2.15
6	ACAACAGTGCCAGCCAGGT	Reverse		
7	GTGTCTGTTGACAGGTATCT	Forward	Galr 2b	1.89
8	GTCATAGTAGCTGAGATATGG	Reverse		
9	TCTCCAGTCATGGAGCACG	Forward	Spx1a	1.86
10	TTCTTCCCTGGGTG	Reverse		
11	TCCACAGAGGAGAACTGG	Forward	Spx1b	1.96
12	CTGTTCTGCTTGTGAGTCCC	Reverse		
13	GCACCACCACCCACAGAATC	Forward	18S	1.97
14	CGACCATAAACGATGCCAACTAG	Reverse		

The primer sequences and PCR efficiency ( $10^{-1/\text{slope}}$ ) are shown.

to a matrix of pairwise distances estimated using a JTT model, and then selecting the topology with superior log likelihood value. The analysis involved 34 and 77 amino acid sequences and there were a total of 15 and 264 positions in the final datasets for spexins and Galrs, respectively.

We examined and compared the genomic environment around spexin1 and spexin2 in zebrafish, Nile tilapia, and Burtoni. Cichlid orthologs were identified by tblasn query using zebrafish genes in NCBI genome browsers, and organized 5'-3' on their respective chromosomes/linkage groups/scaffolds. Accession numbers can be found in **Supplementary Table 2**.

## Peptide Synthesis

Tilapia spexin 1a (NWTPQAMLYLKGTQ-NH<sub>2</sub>), tilapia spexin 1b (NWTSQAILYLKGAQ-NH<sub>2</sub>) and human galanin (GWTLNSAGYLLGPHAVGNHRFSNKNGLTS-NH<sub>2</sub>) were synthesized by GL Biochem. Peptides were synthesized by the automated solid-phase method by applying Fmoc active-ester chemistry, purified by HPLC to >95% purity and the carboxy terminus of each peptide was amidated. The peptides were dissolved to the desired concentration in fish saline (0.85% NaCl in DDW) for *in vivo* experiments.

## *In vivo* Effect of Spx1a and Spx1b on FSH and LH Release

Adult female tilapia (body weight (BW) = 82.4 ± 21.7 g) were injected intraperitoneally with saline, tilapia spexin 1a, or spexin 1b at 10 µg/kg fish ( $n = 8-12$  fish per group). The fish were bled from the caudal blood vessels into heparinized syringes at 2, 4, 8, and 24 h after injection. Blood was centrifuged (3,200 rpm for 30 min at 4°C) to obtain plasma samples, which were stored at -20°C until assayed. This time course is according to standard protocols used previously to test the effect of various hypothalamic neuropeptides on circulating levels of LH and FSH in tilapia (35, 36).

## ELISA for the Measurement of Tilapia FSH and LH

Plasma LH and FSH concentrations were measured by specific competitive ELISAs developed for tilapia (37) using primary antibodies against recombinant tilapia LH $\beta$  or FSH $\beta$ , respectively, and recombinant tilapia LH $\beta\alpha$  (38) or FSH $\beta\alpha$  (37) for the standard curves. The sensitivity was 2.43 and 1.52 ng/mL for LH and FSH, respectively. The inter-assay covariance was 14.8 and 12.5%, and the intra-assay variation was 7.2 and 8% for LH and FSH, respectively.

## Determination of Brain Spx and Galr Expression in Fed vs. Fasted Adult Tilapia by qPCR

An *in vivo* experiment where sexually mature, male tilapia ( $n = 24$ , BW =  $41.7 \pm 1.64$ ) were divided into two groups (one fed *ad libitum* and the other fasted for 26 days) was previously performed (39). Total RNA from the brains were taken for real-time PCR expression analyses from the fed and starved groups. The RNA generated from this experiment was used as template for generated cDNA and performing qPCR analysis of brain Spx1a, Spx1b, Galr2a, and Galr2b in this study.

The qPCR cycling parameters consisted of preincubation at 95°C for 10 min followed by 45 cycles of denaturation at 95°C for 10 s, annealing at 60°C for 30 s, and extension at 72°C for 10 s, followed by a melting curve analysis (95°C for 60 s, 65°C for 60 s, 97°C for 1 s). Reaction conditions were according to (19), and amplification was carried out on Lightcycler 96<sup>®</sup> (Roche Diagnostic International). Serial dilutions were prepared from a cDNA pool, and the efficiencies of the specific gene amplifications were compared by plotting Ct vs. log (template concentration). A dissociation-curve analysis was run after each real-time experiment to confirm the presence of a single product. To control for false-positives, a no reverse transcriptase negative control was run for each template and primer pair. Data were interpreted by the comparative cycle threshold method using 18S as a reference gene (19).

## Second Messenger Reporter Assays

Transient transfection, cell procedures, and stimulation protocols were generally performed as described previously (27, 40). Briefly, the entire coding sequence of tilapia Galr1a, Galr1b, Galr2a, Galr2b, Galr type 1, and Galr type 2 were inserted into pcDNA3.1 (Invitrogen). Co-transfection of the receptors (3  $\mu$ g/plate for each Galr) and a cAMP-response element-luciferase (CRE-Luc), serum response element (SRE-Luc; Invitrogen), or Gqi5 reporter plasmid (3  $\mu$ g/plate) was carried out with TransIT-X2<sup>®</sup> System (Mirus). The cells were serum-starved for 16 h, stimulated with various stimulants for 6 h, and then harvested and analyzed according to (27, 40). Experiments were repeated a minimum of three times from independent transfections and each treatment was performed in triplicate wells. EC<sub>50</sub> values were calculated from dose response curves by means of computerized non-linear curve fitting on baseline-corrected

(control) values using Prism version 6 software (GraphPad). When we have started this project the sequence of tilapia galanin was unknown, and hence we used the known human galanin. Apparently, the first thirteen residues of human and tilapia galanins are identical (Figure 1) and since it was shown that the N-terminal region of galanin is responsible for ligand binding, the effect of the human galanin is probably similar to that of the tilapia (41).

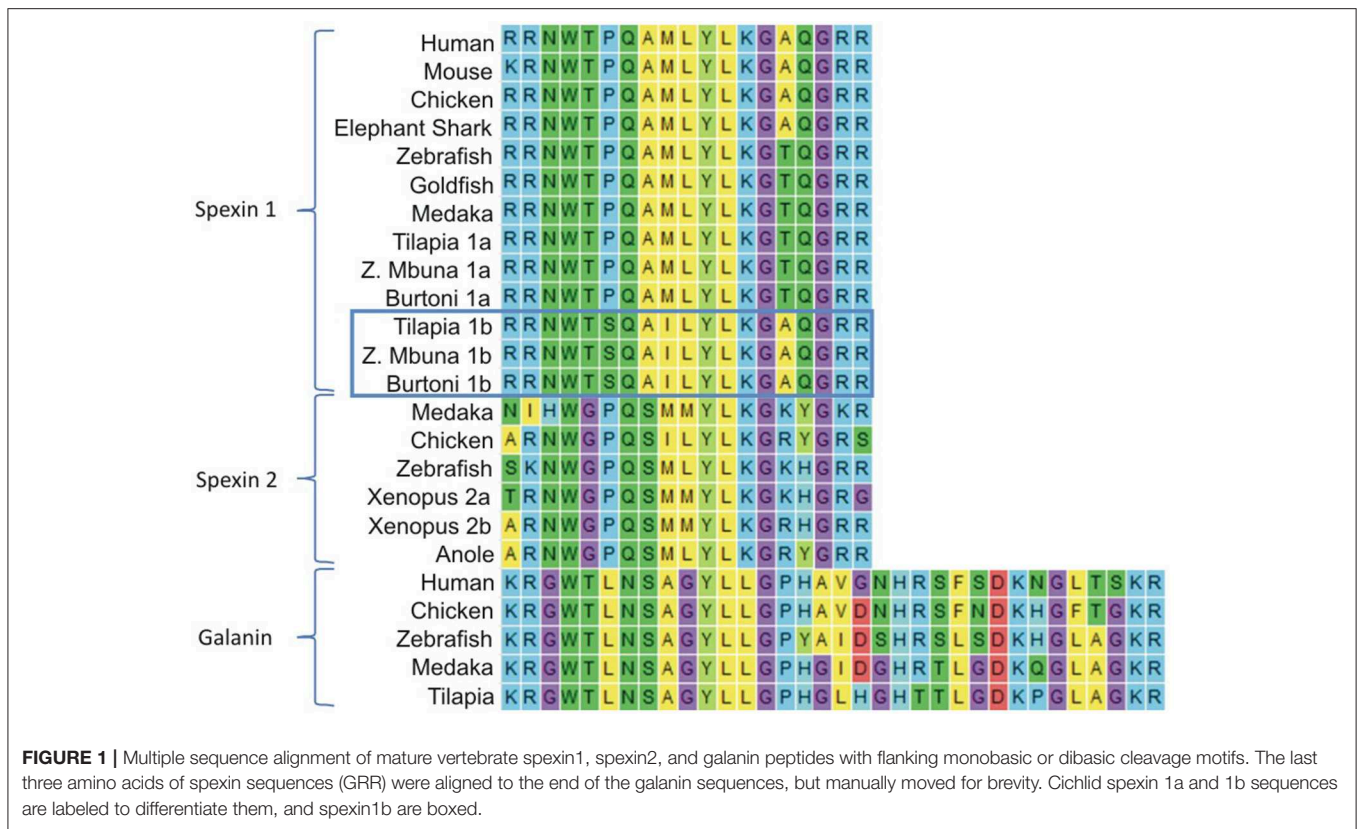
To confirm which of the novel receptors that were cloned in this study transduce effects through the inhibitory Gi signaling pathway, we used a plasmid that contains a chimeric G-protein, Gqi5, in which the five C-terminal amino acids of Gq were changed to those of Gi1, 2 (obtained from Addgene, Inc. Cambridge, MA, USA) and has been described previously (42). Gqi5 is activated by Gi-linked GPCRs, but couples to the effector protein normally activated by Gq, phospholipase C. Since phospholipase C produces IP<sub>3</sub> and actuates Ca<sup>2+</sup> release, the inhibitory nature of Gi-linked receptors can be observed as stimulation via the SRE-luc reporter (43).

## Preparation of Pituitary Slices and Electrophysiology

Pituitary slices were prepared according to (44, 45). Tilapia of both sexes were anesthetized with 2-phenoxyethanol (1 ml/ liter; Sigma-Aldrich Corp., St. Louis, MO) and decapitated. Pituitaries were removed and kept at room temperature in gassed (5% CO<sub>2</sub>) Ringer's saline containing (in mM): 124 NaCl, 3 KCl, 2 CaCl<sub>2</sub>, 2 MgSO<sub>4</sub>, 1.25 NaH<sub>2</sub>PO<sub>4</sub>, 26 NaHCO<sub>3</sub>, and 10 glucose (pH 7.35) up to 5 min before being transferred to 2% agarose low gelling temperature (Sigma) at 32°C. The agarose with the pituitary was placed in the -20°C for a short time until the agarose solidified. The block was glued to the stage of a vibratome (series 1,000, Vibratome Co., St. Louis, MO), and 150  $\mu$ m slices were transferred to cooled gassed Ringer's saline.

For electrophysiological recordings, slices were gently transferred to a chamber attached to the stage of an upright microscope (Axioskop FS, Zeiss, Oberkochen, Germany) continuously superfused with Ringer's saline at room temperature. Endocrine cells were viewed with a 40  $\times$  0.8 numerical aperture, water immersion objective lens (Olympus, Munich, Germany). Patch pipettes were pulled from borosilicate glass capillaries (Hilgenberg, Maisfeld, Germany) on a Narishige PP83 puller. Membrane currents were recorded using an on-cell patch technique—cell-attached recording in which a patch electrode is attached to the cell, but the membrane is not broken. The standard pipette solution contained (in mM): 135 potassium gluconate, 2 MgCl<sub>2</sub>, 1 CaCl<sub>2</sub>, 11 EGTA, 3 ATP (magnesium salt), and 10 HEPES (potassium salt), pH 7.25. Only fluorescently labeled cells from the pituitary were recorded. An Axoclamp-2B amplifier (Axon Instruments, Union City, CA) was used in Bridge mode. Experiments were controlled by USB-6341 data acquisition board (National Instruments, USA) and WinWCP V5.3.7 (Strathclyde Electrophysiology Software, UK). Data were analyzed using PClamp 10 (Axon Instruments) and Microcal Origin 6.0 software.





## Statistical Analyses

Data are presented as means  $\pm$  SEM. All samples had equal variance, as determined by an unequal variance test performed using JMP 7.0 software. The significance of differences between group means of plasma gonadotropin levels and reporter assays were determined by ANOVA, followed by Tukey's test using Graph-Pad Prism 5.01 software (San Diego, CA). EC<sub>50</sub> values of the receptors assays were calculated using log treatment vs. luciferase intensity on a non-linear regression curve using Prism.

## RESULTS

### Cloning and Tissue Distribution of Spexin1a, 1b, and Gal Receptors in Tilapia

The cloned full coding sequence of tilapia spexin 1a and 1b were 363 and 315 base pairs and coded preprohormones of 120 and 104 amino acids, respectively. Both mature tilapia spexin peptides were presumed to be 14 aa based on conserved peptide-flanking monobasic and dibasic cleavage sites (Figure 1). The amino acid sequence of Spx1b differs from that of orthologous piscine Spx1a at positions 4 (Pro to Ser), 7 (Met to Ile), and 13 (Thr to Ala). Both Spx1a and Spx1b are likely amidated at their C-termini due to the GRR motif. The amino acid sequence of Spx2 differs from that of Spx1 at positions 3 (Gly vs. Thr), 6 (Ser vs. Ala), 13 [Arg vs. Thr (piscine species) or Ala (shark and tetrapods)], and 14 (Tyr or His vs. Gln) (Figure 1).

Six different Galrs were found in the tilapia genome and their corresponding coding regions were cloned and sequenced. According to their positions in the phylogenetic tree, they were named Galr1a, Galr1b, Galr2a Galr2b, Galr type 1, and Galr type 2. They encoded proteins of 350, 357, 325, 379, 344, and 379 amino acids for Galr1a, Galr1b, Galr2a Galr2b, Galr type 1, and Galr type 2, respectively. All seven-transmembrane receptors contain 1–2 potential sites for N-linked glycosylation (NXT/S) in the N-terminal region, and 1–3 serine residues for potential protein kinase C phosphorylation (SSR/SKK/SKR) (Supplementary Figure 3).

To shed light on the potential physiological roles of spexins/Galrs in tilapia, we examined their mRNA tissue distribution by real-time PCR (Supplementary Figure 1). The two spexins and their related receptors exhibit overlapping and distinctive patterns of expression in various tissues. Spx1a expression was detected primarily in the midbrain and ovary, whereas Spx1b was detected in pituitary, kidney, and all brain parts, but mostly in the anterior brain. Spx1b expression levels were a few orders of magnitude higher than that of Spx1a relative to 18S ribosomal subunit expression. The expression patterns of Galr1a and Galr2a were similar, where both were detected in most of the tissues with the highest expression observed in the kidney and head kidney. However, Galr1b was detected mostly in the anterior gut and anterior brain, with lower expression found in all other tissues except the gills. High expression of Galr2b was detected in the anterior and midbrain relative to the other tissues, where virtually no expression was detected.

## Evolutionary History of Spexins and Gal Receptors

The phylogenetic analysis showed that the vertebrate SPX sequences fall into two distinct clades, with both cichlid spexins grouped with Spx1 (Figure 2A) and all Spx2 orthologs grouped together in a distinct clade. However, the second tilapia spexin paralog was more phylogenetically related with SPX1 than with SPX2 homologs. We also found that other cichlids, like zebra mbuna and Burtoni, contain two spexin paralogs that are more similar to orthologous spexin 1 sequences. Thus, we named the two cichlid spexins Spx1a and Spx1b.

The genomic organization of spexin paralogs between zebrafish, Nile tilapia, and Burtoni was determined. The genomic environment for *spx1a* was identified on zebrafish chromosome 4, Nile tilapia LG15, and Burtoni on an unplaced scaffold, and was highly conserved (Figure 2B). *Spx1b* was identified on Nile tilapia LG7 and an unplaced scaffold in Burtoni between *golt1bb* and *ldhbb*. *Spx2* was identified on zebrafish chromosome 25 between *gal* and *ldhd* (Figure 2C).

To determine the phylogenetic identity of the cloned Gal receptors we performed a phylogenetic analysis consisting of vertebrate Galr and Kissr sequences (Figure 3). The Galr and Kissr sequences formed two distinct clades. The Galr clade was subdivided into Galr1 and Galr2/3 clades, which, respectively, further formed distinct groups of Galr1a and Galr1b, and Galr3, Galr2a, and Galr2b. Tilapia Galr type 1 and 2 and medaka Galr type 1 belong to a sister group of Galr1.

## Tilapia Spexins Suppress FSH and LH Release *in vivo*

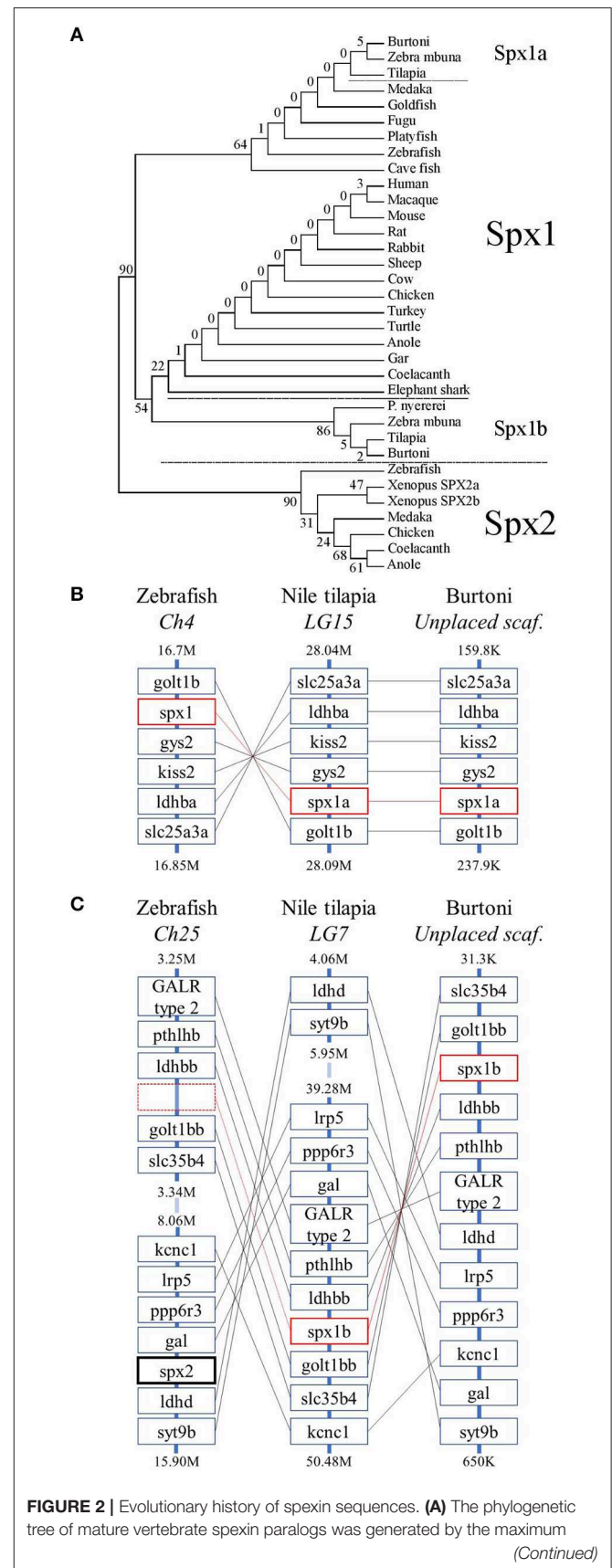
We next aimed to evaluate the biological effects of the two spexin paralogs on the release of tilapia gonadotropins. After a single intraperitoneal administration of 10  $\mu$ g/kg fish Spx1a, both FSH and LH plasma levels significantly decreased after 120 min, compared with the levels observed at 0 min, and stayed at this lower level even after 24 h (Figures 4A,C). Injection of Spx1b caused a gradual decrease in plasma levels of FSH and LH, with lower levels shown after 4 and 8 h (Figures 4B,D). In the control groups, plasma gonadotropin levels did not change for the whole experimental period.

## Fasting Lowers Spexin and Galr2 mRNA Expression in Adult Tilapia

Most of the documented knowledge relates spexin to metabolic processes or feeding behaviors. Even though our study primarily focused on reproduction, we aimed to determine differences in spexin expression in adult tilapia that were fasted or fed for 26 days. Spx1a and Spx1b mRNA expression was significantly lower in the fasted vs. fed fish. Galr2a expression was significantly lower in fasted fish than in fed fish, and Galr2b expression not affected (Figure 5).

## Activation and Signaling of Tilapia Galanin Receptors

All six cloned, full-length tilapia Galrs were sub-cloned into the pcDNA3.1 expression vector and co-transfected into COS7



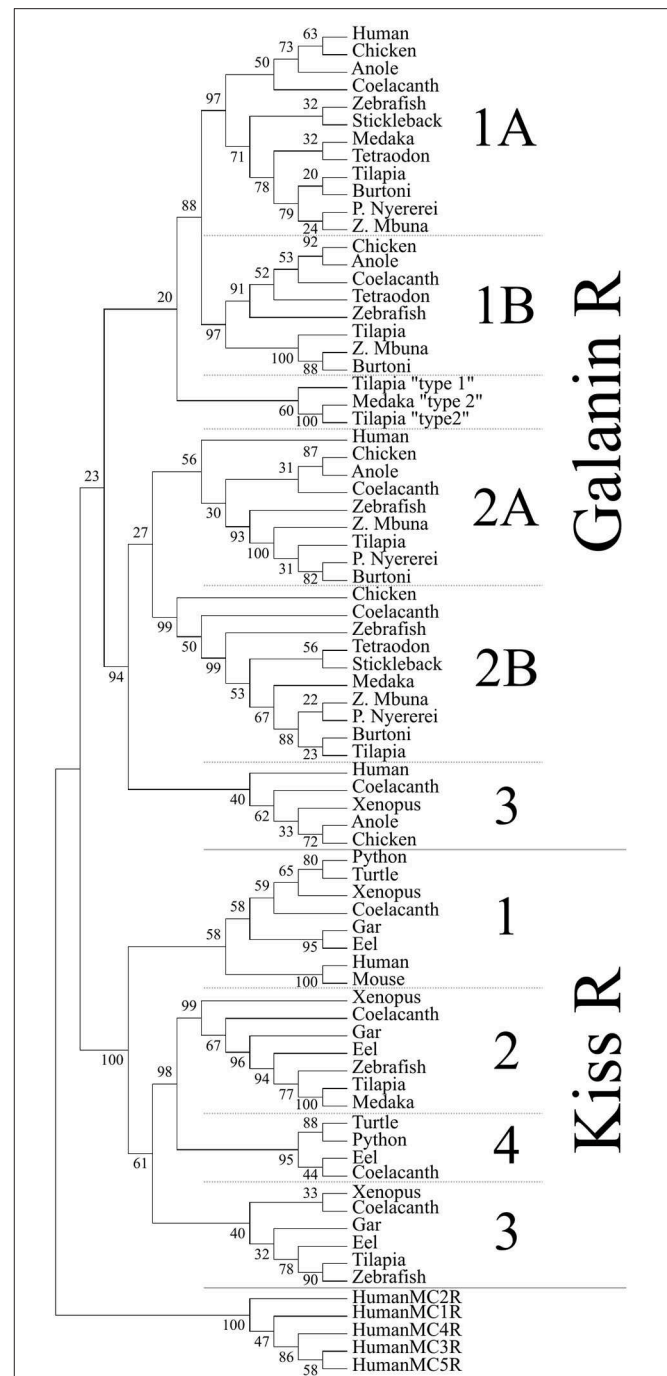
**FIGURE 2** | likelihood method and the percentage of replicate trees in which the associated taxa clustered together in the bootstrap test (500 replicates) are shown next to the branches. **(B)** The genomic environment of *spx1* and **(C)** *spx2* in zebrafish, Nile tilapia, and Burtoni. *Spx1a* and *spx1b* are surrounded in red boxes (broken to emphasize lack of a *spx*-related gene in zebrafish) and *Spx2* has a bolded black box. Chromosomes (Ch)/ linkage groups (LG)/ scaffolds (scaf.) are organized 5'-3' and genomic location [in million (M) or thousand (K) base pairs] is indicated above and below each column. Note that the range of zebrafish Ch25 and tilapia LG7 are broken for brevity.

cells with a luciferase plasmid containing either cAMP response element (CRE), serum responsive element (SRE), or Gqi5 to evaluate their signal transduction pathway(s) upon treatment with tilapia *Spx1a*, *Spx1b*, or human galanin (**Figure 6**). Since each GalR subtype is coupled to different G proteins ( $G\alpha_i$  for GalR1 and GalR3;  $G\alpha_{q/11}$  for GalR2) (14), we tested all the receptors using three different signal transduction pathways: CRE-luc for the activation of PKA/cAMP, SRE-luc for the activation of PKC/ $Ca^{2+}$  and MAPK, and Gqi5/SRE-luc for further verification of inhibition through  $G\alpha_i$ . The 5 aa at the carboxyl-terminus of Gqi5 are sufficient to enable interaction with  $G\alpha_i$ -coupled receptors (42). Ligand stimulation of a  $G\alpha_i$ -coupled receptor is expected to trigger the following cascade: Gqi5, phospholipase C, protein kinase C, SRE-luciferase transcription, luciferase activity, light emission. For verification of the activation of Gqi5 through  $G\alpha_i$ , we used the tilapia dopamine D2 receptor (27, 40). A dose-dependent increase in luciferase activity confirmed that tilapia D2 receptor relayed its activity through the inhibitory  $G_i$  (**Supplementary Figure 4**).

Tilapia *Spxs* or hGAL did not increase CRE-luc or SRE-luc levels in cells expressing GalR1a or GalR1b, but hGAL activated Gqi5 signaling via GalR1a. Increasing concentrations of Gal resulted in significant increases in CRE-luc, SRE-luc, and Gqi5 activity in cells expressing GalR2a. Stimulation by high concentrations of both tilapia *Spx* paralogs resulted in an increase in Gqi5 in cells expressing GalR2a. Exposure to increasing concentrations of either *Spx* resulted in a dose-dependent increase in SRE-luc, CRE-luc, and Gqi5 activity in cells expressing GalR2b. Both *Spx1a* and *Spx1b* were also very efficient in transcription of SRE-luc in cells expressing Gqi5, suggesting that GalR2b relays its signal through  $G_i$  ( $EC_{50} = 1nM$ ). The  $EC_{50}$  values of *Spxs* and Gal for each receptor are summarized in **Table 3**.

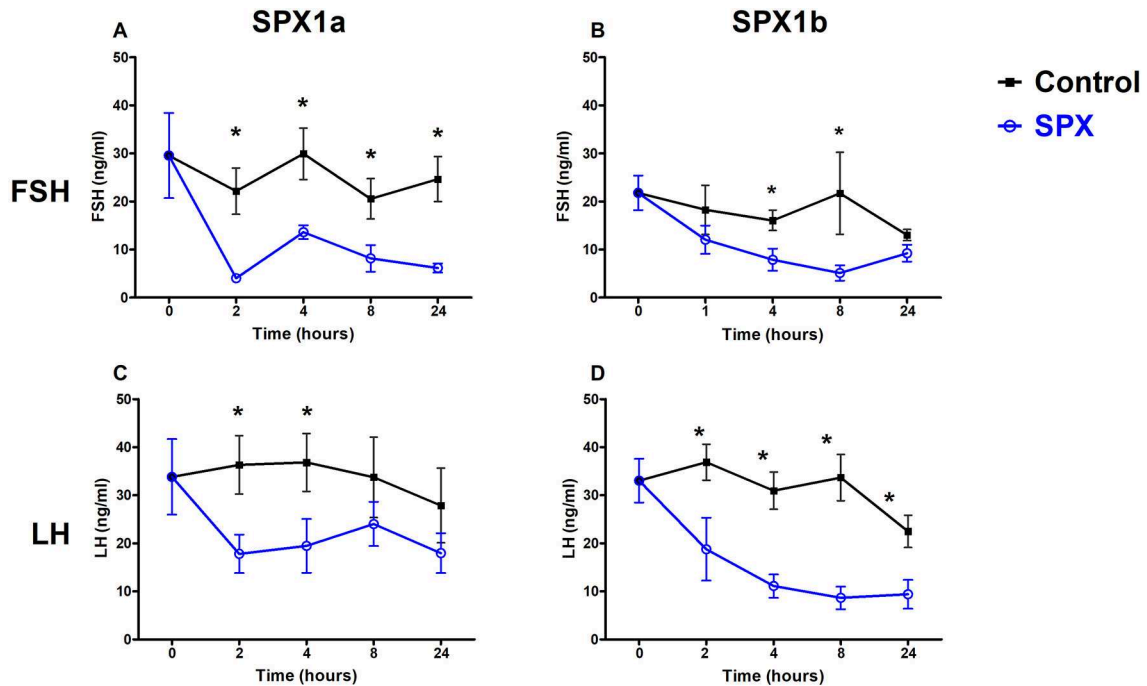
## Effect of Spexin1a on the Electrophysiological Activity of Pituitary LH Cells

Since we found that spexins activate GalR2a and 2b, and that the former is also expressed in the pituitary of tilapia, we sought to determine whether the peptides can act directly at the pituitary level. To this end, we utilized a pituitary slice preparation, and measured the effect of *Spx* on the spike rates of identified LH cells. **Figure 7** shows that upon application of 100 nM *Spx1a*, action potential generation ceased,

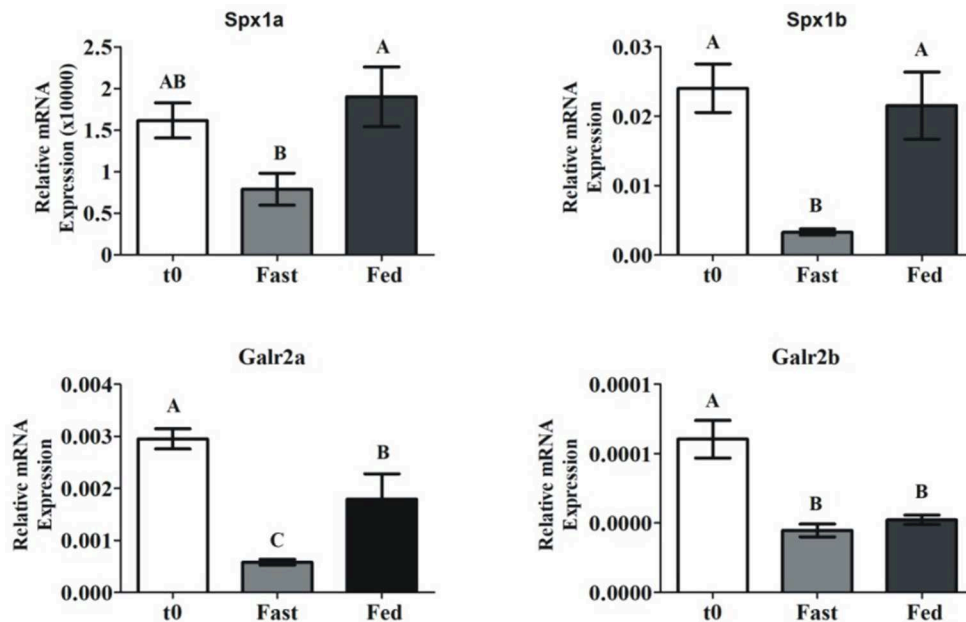


**FIGURE 3** | Phylogenetic analysis of vertebrate galanin and kisspeptin receptors. The phylogenetic tree was generated by the maximum likelihood method and the percentage of replicate trees in which the associated taxa clustered together in the bootstrap test (500 replicates) are shown next to the branches. This cladogram was rooted with human melanocortin receptors (MCR). A solid line subdivides the GalR and KissR clades, and subsequent subdivisions within these clades are separated by dashed lines.

and spike rate gradually return to the basal level upon washout of the peptide. Similar results were found for *Spx 1b* (**Supplementary Figure 5**).

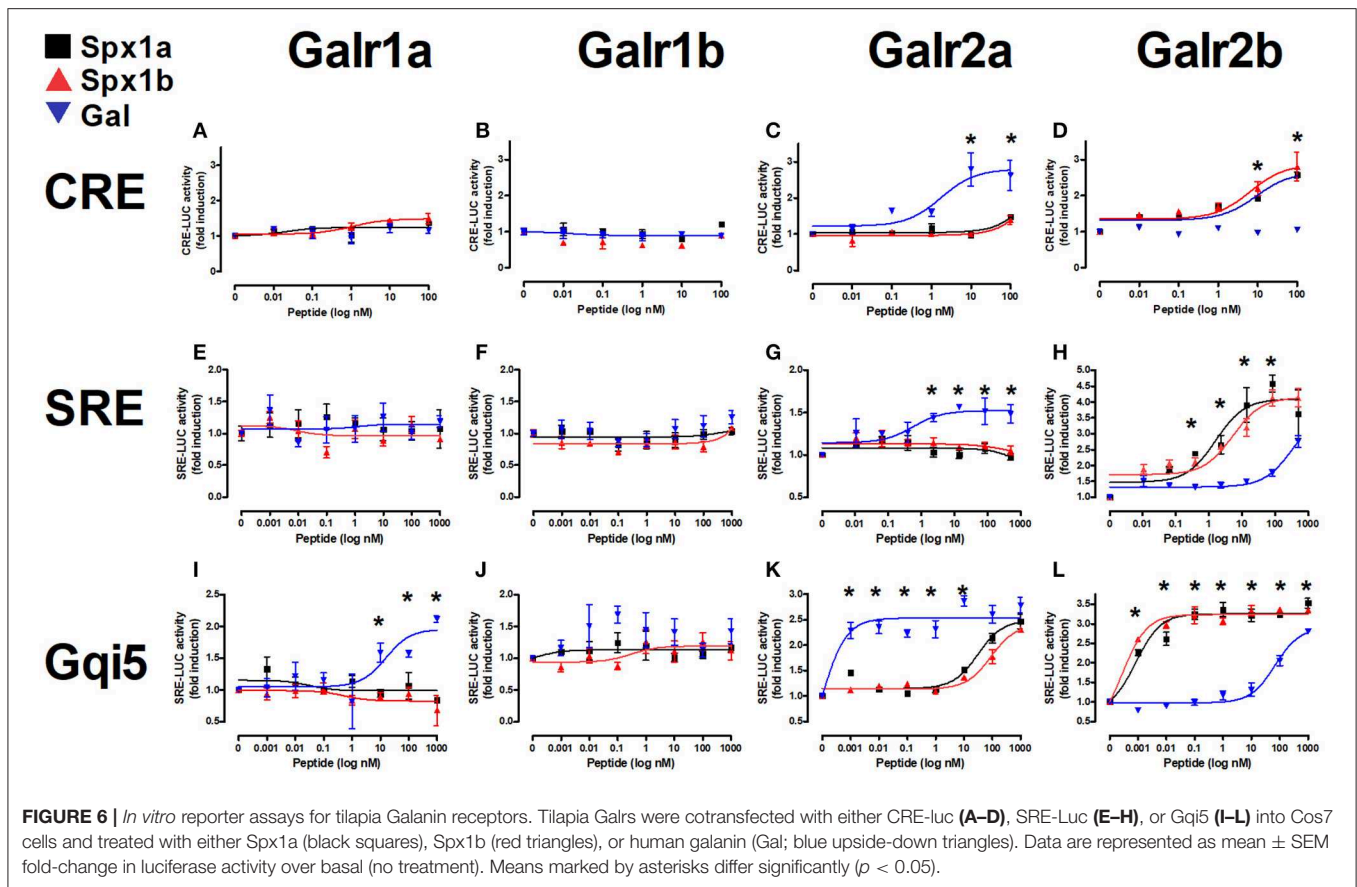


**FIGURE 4 |** Spexins inhibit LH and FSH *in vivo*. Adult female tilapia were injected with Spx1a, Spx1b, or saline and blood was sampled up to 24 h. Plasma FSH (A,B) and LH (C,D) were determined by ELISA. Control values are shown in black, and spexin treatment values are shown in blue. (A,C,D)  $N = 8$ , (B)  $N = 12$ . Data are represented as mean FSH or LH (ng/ml)  $\pm$  SEM. Means marked by asterisks differ significantly from control ( $p < 0.05$ ).



**FIGURE 5 |** Brain spexin and Galr mRNA expression in response to fasting. Sexually mature tilapia were fed *ad libitum* (Fed), or fasted (Fast) for 26 days. Results were normalized to the amount of 18S by the comparative cycle threshold method.  $N = 24$ . Values are given as mean relative expression  $\pm$  SEM. Different letters indicate significant differences between groups ( $p < 0.05$ ).





**TABLE 3** | EC50 values (log nM) of tilapia galanin receptors.

Receptor/Ligand	Pathway	GALR1a	GALR1b	GALR2a	GALR2b	GALR type 1	GALR type 2
SPX1a	CRE				9.2 $\pm$ 1.7 (2.6)		
	SRE				1.6 $\pm$ 2 (4.1)		
	Gqi			31 $\pm$ 1.5 (2.5)	0.0009 $\pm$ 1.4 (3.2)		
SPX1b	CRE				6.4 $\pm$ 2.1 (2.8)		
	SRE				5.2 $\pm$ 1.6 (4.1)		
	Gqi			88 $\pm$ 1.3 (2.4)	0.0003 $\pm$ 1.4 (3.2)		
Galanin	CRE			1.7 $\pm$ 2.5 (2.8)			
	SRE				353 $\pm$ 2.1 (3.7)		
	Gqi			0.0001 $\pm$ 5.6 (2.5)	68 $\pm$ 1.3 (2.9)		

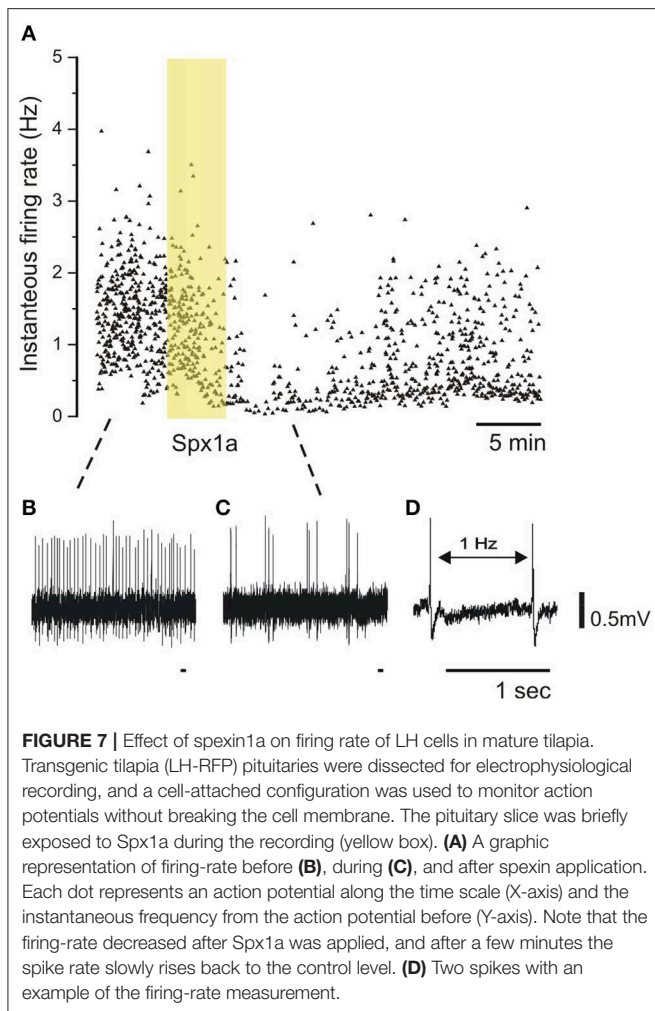
*cAMP responsive element (CRE)-Luc* was used as a reporter of PKA activation; *Serum responsive element (SRE)-Luc* was used as a reporter of PKC activation. Results are expressed as mean  $\pm$  SEM and maximum fold induction value in brackets. Only values  $>2$  presented.

## DISCUSSION

Spexin is a highly conserved peptide hormone that may have pleiotropic functions in different vertebrate species. Cloning of two spexin paralogs and six galanin receptors permitted phylogenetic, synteny, and functional analyses in Nile tilapia, supporting the involvement of the spexin/galanin receptor system in fish reproduction and metabolism. Evolutionary analyses support that cichlid species possess a novel form of Spx1, named Spx1b, but not Spx2 like in some other vertebrates.

Demonstration of Spx1a and Spx1b involvement in reproduction was shown *in vivo* and *in vitro*, and starvation limited the expression of both paralogs. Despite their differential tissue distribution and expression profiles, both Spx1a and Spx1b had similar biological effects, which are likely mediated through galanin receptor 2b.

Phylogenetic and synteny analyses coupled with vertebrate ancestral chromosome (VAC) reconstruction supported that *kiss*, *gal*, and *spx* genes were located adjacent to each other on VAC D and individually arose by local tandem duplication prior to



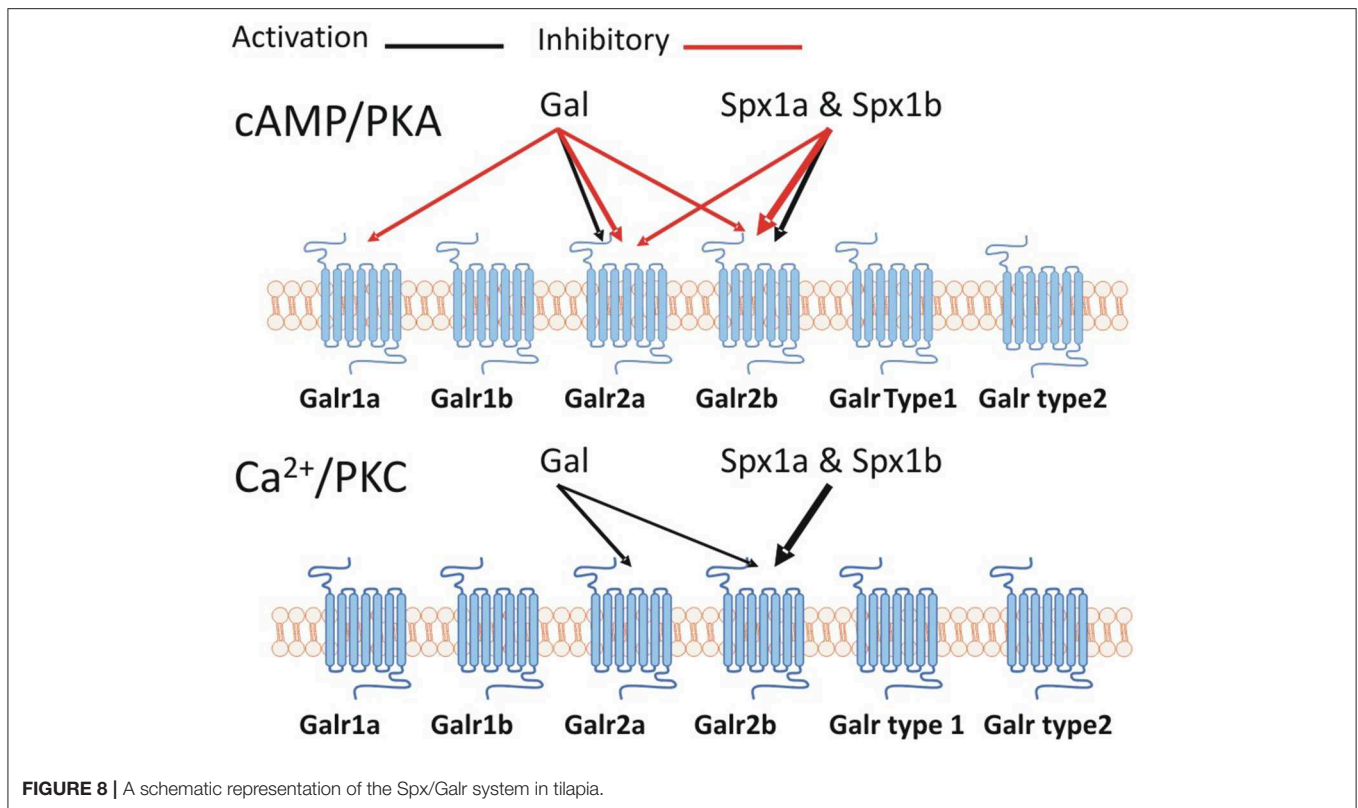
the first whole genome duplication event (15). This genomic proximity was conserved after two rounds of whole genome duplication (1R, 2R) and is observed in modern vertebrate genomes, where *spx1* is found near *kiss2*, and *spx2* is found near *gal*. Our synteny analysis supported this organization for Nile tilapia and Burtoni *spx1*, but not *spx2*. We initially had thought that the spexin-like gene flanked by *golt1bb* and *ldhbb* in tilapia was *spx2*, but this did not correspond with the genomic organization of zebrafish *spx2*, which is flanked by *gal* and *ldhd*. The genomic distance between Nile tilapia *gal* and *ldhd* is >34 million base pairs, and *spx1b* lies outside of this syntenic block between *golt1bb* and *ldhbb*. No zebrafish spexin-like gene was found between *golt1bb* and *ldhbb*, suggesting that this tilapia and Burtoni spexin paralog is not *spx2*. Additionally, Spx1b has 85–93% (12–13/14aa) sequence conservation across all vertebrate Spx1 peptides, but only 57–71% (8–10/14aa) conservation with the variable and meager Spx2 sequences. Phylogenetic analysis of mature spexin peptide sequences shows that cichlid Spx1b forms a sister clade to vertebrate Spx1, and is not placed with other teleost Spx1 homologs. Due to the highly conserved nature of short peptide sequences and a 20% divergence in amino acid

sequence identity from Spx1, we propose that Spx1b is a novel spexin peptide found only in cichlid species.

Spexin has been implicated in regulating the hypothalamic-pituitary-gonad (HPG) axis in some fish species. Our *in vivo* experiments support that not only Spx1a, but also the novel form, Spx1b, inhibits LH and FSH release in tilapia. The first report on fish spexin in zebrafish and goldfish identified high and dynamic expression in the brain throughout the reproductive stages (10). Spexin inhibited LH release in goldfish pituitary cultures and *in vivo*, and an estradiol feedback mechanism on hypothalamic spexin expression was observed. Ovariectomized goldfish had increased hypothalamic spexin expression, and estrogen replacement returned expression to basal levels (10). A similar effect was seen in the spotted scat, where estradiol decreased spexin expression in a dose-dependent manner *in vitro* (46). However, zebrafish *spx*<sup>-/-</sup> knockouts displayed normal reproductive phenotypes, so spexin may only play a direct role in regulating the reproductive axis in certain fish species (12). With that being said, knockout models of reproductive hormones in fish species tend to reproduce normally [reviewed in (47)]. There are few reports on the role of spexin in reproduction, all of which have been carried out in fish; additional studies in non-piscine species are required to determine if spexin has a functionally conserved role along the HPG axis.

A distinctive feature of the teleost pituitary gland is that LH and FSH are synthesized by different gonadotrope cells, which suggests a functional and differential regulation of gonadotropin release mechanisms. The cells of the teleost pituitary are distinctly organized and receive hypothalamic signals directly by nerve innervation as well as via neurovasculature (18). Teleost LH cells form dense networks throughout the pars distalis of the adenohypophysis, and FSH cells form small clusters that are more broadly distributed throughout the pars distalis (17). LH cells, but not FSH cells, are functionally coupled, as shown by perfusion of pituitary fragments exposed to GnRH with gap-junction blockers and by a patch-clamp technique (17). These organizational characteristics of the teleost pituitary complicate our understanding about the various ways by which the gonadotrophs decode stimulatory and inhibitory inputs. The principal stimulatory and inhibitory factors for LH release are gonadotropin-releasing hormone (GnRH) and dopamine (DA), respectively, but less is known about FSH release. LH and FSH cells are regulated by more than 20 neurohormones, but only a small portion of them function as inhibitory factors (47). In fish, the dopamine receptor (D2-R) is expressed on LH cells (48) and on GnRH neurons (26), suggesting that direct and indirect mechanisms of LH release inhibition exist. Gonadotrophs are excitable cells, and action potential frequency of LH and FSH cells were shown to be influenced by GnRH exposure (49). We performed electrophysiological measurements on LH cells in pituitary slices and observed that both Spx1a and Spx1b cause a reversible decrease in action potential frequency. Although the precise link between electrical activity and hormone release has yet to be determined, this finding does confirm that Spx can act directly at the level of the pituitary.

Spexin mRNA expression levels may also be correlated with reproductive development. Increases in LH and FSH mRNA



expression is seasonal and corresponds to gonadal development (50, 51). In goldfish, hypothalamic Spx1 expression significantly decreased as the breeding season progressed and GSI increased (10), potentially contributing to progressive LH release. A similar decrease was seen in the orange-spotted grouper over the course of oogenesis, where the highest hypothalamic Spx1 expression was observed prior to oocyte primary growth (11), and in the spotted scat, expression significantly decreased over the course of vitellogenesis (46). In zebrafish, however, Spx1 expression in the brain gradually increased from the ovarian primary growth stage, peaked in early-mid vitellogenesis, then returned to primary growth levels during final maturation (10). Given that Spx1 is negatively regulated by estrogen (10), which increases in circulation until final oocyte maturation, it seems reasonable that Spx expression correlates with reproductive development. Additionally, Spx1 treatment affects the expression of other reproductive factors, such as increasing gonadotropin inhibitory hormone (GnIH) and GnRH-III expression and decreasing GpH $\alpha$  and FSH $\beta$  expression in a sole (52).

Spexin has wide tissue distribution patterns in tetrapods and fish, suggesting that spexin has pleiotropic biological consequences in feeding behavior, metabolism, nociception, cardiovascular function, muscle motility, stress, depression, and anxiety (3). The localization of spexins at the cellular level inform these functions. In tilapia, the two spexin paralogs exhibited wide differential tissue distribution patterns, where Spx1a was primarily expressed in the midbrain (containing the hypothalamus in our preparations), and Spx1b was primarily expressed in the anterior brain, which contains the preoptic

area. Similarly, in a detailed report of spexin neuron circuitry in zebrafish, Spx1 expression was restricted to the midbrain tegmentum and the hindbrain and Spx2 expression was found in the preoptic area, however neither was detected in the hypothalamus (53). In goldfish, Spx1 was identified in the hypothalamus, thalamus, and medial longitudinal fasciculus, however immunoreactivity was detected using heterologous antibodies that may have recognized both Spx1 and Spx2 (10). Even though our tissue distribution analysis is crude and unable to implicate any detailed biological function from expression, these data support the conservation of Spx1 expression, which differs from Spx1b localization. In order to determine if the neuronal circuits of spexins are conserved in fish, methodologies for determining specific spexin localization (IHC with custom antibodies, fluorescent *in situ* hybridization, etc.) are needed from additional species.

Spexin plays a role in feeding behavior and metabolism in fish and mammals [reviewed in (3)]. In the orange-spotted grouper (11), half-smooth tongue sole (46), and spotted scat (46), starvation increased Spx1 expression. We observed a decrease in brain Spx1a, Spx1b, and Galr2a expression in fasted adult tilapia. Brain Spx1 expression was also decreased in unfed Ya-fish (54). In goldfish, Spx1 injections decreased surface feeding and increased food rejection, and increased circulating Spx1 and brain and liver Spx1 mRNA expression after feeding (2, 55). This effect was also observed in *spx1*<sup>-/-</sup> zebrafish, which had higher food intake compared to wildtype fish, and Spx1 administration suppressed agouti-related peptide (AgRP) expression (12). In support of this mechanism of

satiety control, central administration of Spx1 in goldfish caused a decrease in expression of appetite stimulants (NPY, AgRP, and apelin) and increased expression of anorexigenic factors [proopiomelanocortin (POMC), cocaine- and amphetamine-regulated transcript (CART), cholecystokinin (CCK), melanin-concentrating hormone (MCH), and corticotropin-releasing hormone (CRH)] in different parts of the brain (2). Furthermore, intracerebroventricular injection of Spx1 inhibited feeding behavior induced by NPY and orexin. In addition to appetite factors, insulin was shown to increase circulating levels of Spx1 and its expression in the telencephalon, hypothalamus, and optic tectum (55). Therefore, local and central Spx1 might have a role in appetite control and energy homeostasis in fish.

Spexin mediates its effects by activating an inhibitory G-protein ( $G\alpha_i$ ) via galanin receptor (GalR) 2/3. Like the kisspeptin, galanin, and spexin peptides, the kisspeptin and galanin receptors are related. Ancestral forms of KissR, GalR1, and GalR2/3 were identified on different VACs with 1R and 2R expanding each clade, giving rise to four KissR (KissR1, 3, 2, 4), two GalR1 (1a, 1b), two GalR2 (2a, 2b) and GalR3 paralogs (15). Our phylogenetic analysis supports that of Kim et al. (15), showing that GalRs are divided into two major clades, namely GalR1 and GalR2/3, with KissRs forming a distinctive sister clade. We cloned two additional GalRs based on predicted NCBI sequences named Galr type 1 and type 2, which formed a sister group to GalR1 sequences, but were not activated by galanin or spexin (**Supplementary Figure 2**). It has been previously shown that the cognate receptor(s) for Spx1/Spx2 are GalR2/3, whereas GalR1 is the cognate receptor for galanin; teleosts do not possess GalR3 (15). Our second messenger reporter assays revealed that tilapia Spx1a and Spx1b activated  $G\alpha_s$  (via CRE),  $G\alpha_q$  (via SRE), and  $G\alpha_i$  (via Gqi5) signaling pathways through Galr2b, but not Galr1a or Galr1b. Galanin was more efficacious than Spx1a or Spx1b in activating  $G\alpha_s$  and  $G\alpha_i$  via Galr2a, but did not activate  $G\alpha_q$  (**Figure 8**). Determining inhibitory effects via  $G\alpha_i$  is challenging, so we utilized a reporter plasmid that permits  $G\alpha_i$ -coupled receptors to stimulate PLC (42). Human, Xenopus, and zebrafish GalRs were activated in a similar manner using an alternative expression system (15). GalR2 displays differential signaling preferences to either Gal or Spx, which induce different conformational changes in the receptor and bias intracellular signaling cascades (40). Spx quickly dissociated after G-protein signaling, whereas Gal binding was more stable and promoted arrestin-dependent receptor internalization. It has been shown that galanin and spexin have an inverse relationship in regards to LH release [reviewed in (15)], perhaps due in part to the receptor displaying biased agonism in order to decipher endogenous hormone signaling.

We have shown evolutionary and functional evidence that cichlid fish possess two paralogs of Spx1 but not Spx2, and that

tilapia Spx1a and Spx1b can inhibit LH and FSH secretion via Galr2b. Why cichlids have evolved a second form of Spx1 and lost Spx2 remains unknown. One in ten teleosts are cichlids, making them the most species-rich group of vertebrates and excellent genetic models of adaptive radiation (56). Additionally, Nile tilapia is a major globally aquacultured species. Further research into the potential for manipulation of growth and reproductive processes with spexin or galanin receptor agonists/antagonists is warranted.

## DATA AVAILABILITY STATEMENT

The datasets generated for this study can be found in the NCBI, under accession numbers: MN399812, MN399813, MN326828, MN326829, MN326830, MN326831, MN614146, and MN614147.

## ETHICS STATEMENT

The animal study was reviewed and approved by Local Administrative Panel on Laboratory Animal Care of the Hebrew University.

## AUTHOR CONTRIBUTIONS

YC, KH, and BL-S prepared and wrote the manuscript. YC, KH, and YB curated and analyzed all data. MG and BL-S acquired funding, supervised, and conceptualized the manuscript. All authors contributed to manuscript revision, read and approved the submitted version.

## FUNDING

This work was supported by ISF-BLS, BARD-KH. The research was funded by the Israel Science Foundation (ISF) No. 1540/17. KH was supported by BARD, the United States—Israel Binational Agricultural Research and Development Fund, Vaadia-BARD Postdoctoral Fellowship Award No. FU-561-2017.

## ACKNOWLEDGMENTS

We would like to thank Dr. Michal Shpilman for her technical assistance.

## SUPPLEMENTARY MATERIAL

The Supplementary Material for this article can be found online at: <https://www.frontiersin.org/articles/10.3389/fendo.2020.00071/full#supplementary-material>

## REFERENCES

- Mirabeau O, Perlas E, Severini C, Audero E, Gascuel O, Possenti R, et al. Identification of novel peptide hormones in the human proteome by hidden markov model screening. *Genome Res.* (2007) 17:320–7. doi: 10.1101/gr.5755407
- Wong MK, Sze KH, Chen T, Cho CK, Law HC, Chu IK, et al. Goldfish spexin: solution structure and novel function as a satiety factor



- in feeding control. *Am J Physiol Endocrinol Metab.* (2013) 305:E348–66. doi: 10.1152/ajpendo.00141.2013
3. Lim CH, Lee YM, Soga T, Parhar I. Evolution of structural and functional diversity of spexin in mammalian and non-mammalian vertebrate species. *Front Endocrinol.* (2019) 10:379. doi: 10.3389/fendo.2019.00379
  4. Rucinski M, Porzionato A, Ziolkowska A, Szyszka M, Macchi V, De Caro R, et al. Expression of the spexin gene in the rat adrenal gland and evidences suggesting that spexin inhibits adrenocortical cell proliferation. *Peptides.* (2010) 31:676–82. doi: 10.1016/j.peptides.2009.12.025
  5. Porzionato A, Rucinski M, Macchi V, Stecco C, Sarasin G, Sfriso MM, et al. Spexin is expressed in the carotid body and is upregulated by postnatal hyperoxia exposure. *Adv Exp Med Biol.* (2012) 758:207–13. doi: 10.1007/978-94-007-4584-1\_29
  6. Toll L, Khroyan TV, Sonmez K, Ozawa A, Lindberg I, McLaughlin JP, et al. Peptides derived from the prohormone proNPQ/spexin are potent central modulators of cardiovascular and renal function and nociception. *FASEB J.* (2012) 26:947–54. doi: 10.1096/fj.11-192831
  7. Pirzeh L, Taherianfard M. Effect of intra hippocampal CA1 injection of spexin on pain sensitivity in female rat. *Bull Env Pharmacol Life Sci.* (2014) 3:71–74. Available online at: <https://pdfs.semanticscholar.org/f0eb/01f5a568b918d7199bbc5432b9774e9eb7fb.pdf>
  8. Walewski JL, Ge F, Lobdell HT, Levin N, Schwartz GJ, Vasselli JR, et al. Spexin is a novel human peptide that reduces adipocyte uptake of long chain fatty acids and causes weight loss in rodents with diet-induced obesity. *Obesity.* (2014) 22:1643–52. doi: 10.1002/oby.20725
  9. Karaca A, Bakar-Ates F, Ersoz-Gulcelik N. Decreased spexin levels in patients with type 1 and type 2 diabetes. *Med Princ Pract.* (2018) 27:549–54. doi: 10.1159/000493482
  10. Liu Y, Li S, Qi X, Zhou W, Liu X, Lin H, et al. A novel neuropeptide in suppressing luteinizing hormone release in goldfish, *carassius auratus*. *Mol Cell Endocrinol.* (2013) 374:65–72. doi: 10.1016/j.mce.2013.04.008
  11. Li S, Liu Q, Xiao L, Chen H, Li G, Zhang Y, et al. Molecular cloning and functional characterization of spexin in orange-spotted grouper (*Epinephelus coioides*). *Comp Biochem Physiol B Biochem Mol Biol.* (2016) 196–7:85–91. doi: 10.1016/j.cbpb.2016.02.009
  12. Zheng B, Li S, Liu Y, Li Y, Chen H, Tang H, et al. Spexin suppress food intake in zebrafish: evidence from gene knockout study. *Sci Rep.* (2017) 7:14643. doi: 10.1038/s41598-017-15138-6
  13. Webling KE, Runesson J, Bartfai T, Langel U. Galanin receptors and ligands. *Front Endocrinol.* (2012) 3:146. doi: 10.3389/fendo.2012.00146
  14. Sipkova J, Sida P, Kasprkova N, Kramarikova I, Hynie S, Klenerova V. Effect of stress on the expression of galanin receptors in rat heart. *Folia Biol.* (2017) 63:98–104.
  15. Kim DK, Yun S, Son GH, Hwang JI, Park CR, Kim JI, et al. Coevolution of the spexin/galanin/kisspeptin family: spexin activates galanin receptor type II and III. *Endocrinology.* (2014) 155:1864–73. doi: 10.1210/en.2013-2106
  16. Levavi-Sivan B, Bogerd J, Mananos EL, Gomez A, Lareyre JJ. Perspectives on fish gonadotropins and their receptors. *Gen Comp Endocrinol.* (2010) 165:412–37. doi: 10.1016/j.ygcen.2009.07.019
  17. Golan M, Martin AO, Mollard P, Levavi-Sivan B. Anatomical and functional gonadotrope networks in the teleost pituitary. *Sci Rep.* (2016) 6:23777. doi: 10.1038/srep23777
  18. Golan M, Zelinger E, Zohar Y, Levavi-Sivan B. Architecture of GnRH-gonadotrope vasculature reveals a dual mode of gonadotropin regulation in fish. *Endocrinology.* (2015) 156:4163–73. doi: 10.1210/en.2015-1150
  19. Biran J, Palevitch O, Ben-Dor S, Levavi-Sivan B. Neurokinin Bs and neurokinin B receptors in zebrafish-potential role in controlling fish reproduction. *Proc Natl Acad Sci USA.* (2012) 109:10269–74. doi: 10.1073/pnas.1119165109
  20. Zohar Y, Munoz-Cueto JA, Elizur A, Kah O. Neuroendocrinology of reproduction in teleost fish. *Gen Compar Endocrinol.* (2010) 165:438–55. doi: 10.1016/j.ygcen.2009.04.017
  21. Zhao E, McNeilly JR, McNeilly AS, Fischer-Colbrie R, Basak A, Seong JY, et al. Secretoneurin stimulates the production and release of luteinizing hormone in mouse L[ $\beta$ ]T2 gonadotropin cells. *Am J Physiol Endocrinol Metab.* (2011) 301:E288–97. doi: 10.1152/ajpendo.00070.2011
  22. Pinto P, Velez Z, Sousa C, Santos S, Andrade A, Alvarado MV, et al. Responsiveness of pituitary to galanin throughout the reproductive cycle of male European sea bass (*Dicentrarchus labrax*). *Gen Comp Endocrinol.* (2017) 250:152–61. doi: 10.1016/j.ygcen.2017.06.009
  23. Zhang C, Forlano PM, Cone RD. AgRP and POMC neurons are hypophysiotropic and coordinately regulate multiple endocrine axes in a larval teleost. *Cell Metab.* (2012) 15:256–64. doi: 10.1016/j.cmet.2011.12.014
  24. Biran J, Ben-Dor S, Levavi-Sivan B. Molecular identification and functional characterization of the kisspeptin/kisspeptin receptor system in lower vertebrates. *Biol Reprod.* (2008) 79:776–86. doi: 10.1095/biolreprod.107.066266
  25. Jiang DN, Li JT, Tao YX, Chen HP, Deng SP, Zhu CH, et al. Effects of melanocortin-4 receptor agonists and antagonists on expression of genes related to reproduction in spotted cat, *Scatophagus argus*. *J Comp Physiol B.* (2017) 187:603–612. doi: 10.1007/s00360-017-1062-0
  26. Dufour S, Sebert ME, Weltzien FA, Rousseau K, Pasqualini C. Neuroendocrine control by dopamine of teleost reproduction. *J Fish Biol.* (2010) 76:129–60. doi: 10.1111/j.1095-8649.2009.02499.x
  27. Levavi-Sivan B, Aizen J, Avitan A. Cloning, characterization and expression of the D2 dopamine receptor from the tilapia pituitary. *Mol. Cell. Endocrinol.* (2005) 236:17–30. doi: 10.1016/j.mce.2005.03.010
  28. Gaillard S, Lo Re L, Mantilleri A, Hepp R, Urien L, Malapert P, et al. GINIP, a galphai-interacting protein, functions as a key modulator of peripheral GABA<sub>B</sub> receptor-mediated analgesia. *Neuron.* (2014) 84:123–36. doi: 10.1016/j.neuron.2014.08.056
  29. Golan M, Levavi-Sivan B. Social dominance in tilapia is associated with gonadotroph hyperplasia. *Gene Compar Endocrinol.* (2013) 192:126–35. doi: 10.1016/j.ygcen.2013.04.032
  30. Blom N, Sicheritz-Pontén T, Gupta R, Gammeltoft S, Brunak S. Prediction of post-translational glycosylation and phosphorylation of proteins from the amino acid sequence. *Proteomics.* (2004) 4:1633–49. doi: 10.1002/pmic.200300771
  31. Blom N, Gammeltoft S, Brunak S. Sequence and structure-based prediction of eukaryotic protein phosphorylation sites I edited by F. E. Cohen. *J Mol Biol.* (1999) 294:1351–62. doi: 10.1006/jmbi.1999.3310
  32. Kumar S, Stecher G, Tamura K. MEGA7: Molecular evolutionary genetics analysis version 7.0 for bigger datasets. *Mol Biol Evol.* (2016) 33:1870–4. doi: 10.1093/molbev/msw054
  33. Jones DT, Taylor WR, Thornton JM. The rapid generation of mutation data matrices from protein sequences. *Comput Appl Biosci.* (1992) 8:275–82. doi: 10.1093/bioinformatics/8.3.275
  34. Felsenstein J. Confidence limits on phylogenies: an approach using the bootstrap. *Evolution.* (1985) 39:783–91. doi: 10.1111/j.1558-5646.1985.tb00420.x
  35. Mizrahi N, Gilon C, Atre I, Ogawa S, Parhar IS, Levavi-Sivan B. Deciphering direct and indirect effects of neurokinin B and GnRH in the brain-pituitary axis of tilapia. *Front Endocrinol.* (2019). 10:469. doi: 10.3389/fendo.2019.00469
  36. Biran J, Golan M, Mizrahi N, Ogawa S, Parhar IS, Levavi Sivan B. LPXRFa, the piscine ortholog of GnIH, and LPXRF-receptor positively regulate gonadotropin secretion in tilapia (*Oreochromis niloticus*). *Endocrinology.* (2014) 155:4391–401. doi: 10.1210/en.2013-2047
  37. Aizen J, Kasuto H, Levavi-Sivan B. Development of specific enzyme-linked immunosorbent assay for determining LH and FSH levels in tilapia, using recombinant gonadotropins. *Gen Comp Endocrinol.* (2007) 153:323–32. doi: 10.1016/j.ygcen.2007.04.004
  38. Kasuto H, Levavi-Sivan B. Production of biologically active tethered tilapia LH $\beta$  by the methylotrophic yeast *pichia pastoris*. *Gen Comp Endocrinol.* (2005). 140:222–32. doi: 10.1016/j.ygcen.2004.10.016
  39. Shpilmann M, Hollander-Cohen L, Ventura T, Gertler A, Levavi-Sivan B. Production, gene structure and characterization of two orthologs of leptin and a leptin receptor in tilapia. *Gen Comp Endocrinol.* (2014) 207:74–85. doi: 10.1016/j.ygcen.2014.05.006
  40. Reyes-Alcaraz A, Lee YN, Yun S, Hwang JI, Seong JY. Conformational signatures in beta-arrestin2 reveal natural biased agonism at a G-protein-coupled receptor. *Commun Biol.* (2018) 1:128. doi: 10.1038/s42003-018-0134-3
  41. Nagarajan S, Marimuthu P. Binding site prediction of galanin peptide using evolutionary trace method. *Bioinformation.* (2006) 1:180–3. doi: 10.6026/97320630001180

42. Conklin BR, Farfel Z, Lustig KD, Julius D, Bourne HR. Substitution of three amino acids switches receptor specificity of Gq alpha to that of Gi alpha. *Nature*. (1993) 363:274–6. doi: 10.1038/363274a0
43. Coward K, Bromage NR. Spawning frequency, fecundity, egg size and ovarian histology in groups of tilapia zillii maintained upon two distinct food ration sizes from first-feeding to sexual maturity. *Aqua Living Resour*. (1999) 12:11–22. doi: 10.1016/S0990-7440(99)80010-2
44. Levavi-Sivan B, Bloch CL, Gutnick MJ, Fleidervish IA. Electrotonic coupling in the anterior pituitary of a teleost fish. *Endocrinology*. (2005) 146:1048–52. doi: 10.1210/en.2004-1415
45. Bloch CL, Kedar N, Golan M, Gutnick MJ, Fleidervish IA, Levavi-Sivan B. Long-term GnRH-induced gonadotropin secretion in a novel hypothalamo-pituitary slice culture from tilapia brain. *Gene Compar Endocrinol*. (2014) 207:21–7. doi: 10.1016/j.ygcen.2014.05.017
46. Deng SP, Chen HP, Zhai Y, Jia LY, Liu JY, Wang M, et al. Molecular cloning, characterization and expression analysis of spexin in spotted scat (*Scatophagus argus*). *Gen Comp Endocrinol*. (2018) 266:60–6. doi: 10.1016/j.ygcen.2018.04.018
47. Trudeau VL. Facing the challenges of neuropeptide gene knockouts: why do they not inhibit reproduction in adult teleost fish? *Front Neurosci*. (2018) 12:302. doi: 10.3389/fnins.2018.00302
48. Fontaine R, Affaticati P, Yamamoto K, Jolly C, Bureau C, Baloché S, et al. Dopamine inhibits reproduction in female zebrafish (*Danio rerio*) via three pituitary D2 receptor subtypes. *Endocrinology*. (2013) 154:807–18. doi: 10.1210/en.2012-1759
49. R.Strandabø AU, Hodne K, Ager-Wick E, Sand OF, Weltzien A, Haug TM. Signal transduction involved in GnRH2-stimulation of identified LH-producing gonadotropes from lhb-GFP transgenic medaka (*Oryzias latipes*). *Mol Cell Endocrinol*. (2013) 372:128–39. doi: 10.1016/j.mce.2013.03.022
50. Hellqvist A, Schmitz M, Mayer I, Borg B. Seasonal changes in expression of LHb and FSHb in male and female three-spined stickleback, *Gasterosteus aculeatus*. *Gene Compar Endocrinol*. (2006) 145:263–9. doi: 10.1016/j.ygcen.2005.09.012
51. Martyniuk CJ, Kroll KJ, Porak WF, Steward C, Grier HJ, Denslow ND. Seasonal relationship between gonadotropin, growth hormone, and estrogen receptor mRNA expression in the pituitary gland of largemouth bass. *Gen Comp Endocrinol*. (2009) 163:306–17. doi: 10.1016/j.ygcen.2009.04.028
52. Wang S, Wang B, Chen S. Spexin in the half-smooth tongue sole (cynoglossus semilaevis): molecular cloning, expression profiles, and physiological effects. *Fish Physiol Biochem*. (2018) 44:829–39. doi: 10.1007/s10695-018-0472-6
53. Kim E, Jeong I, Chung AY, Kim S, Kwon SH, Seong JY, et al. Distribution and neuronal circuit of spexin 1/2 neurons in the zebrafish CNS. *Sci Rep*. (2019) 9:5025. doi: 10.1038/s41598-019-41431-7
54. Wu H, Lin F, Chen H, Liu J, Gao Y, Zhang X, et al. Ya-fish (*Schizothorax prenanti*) spexin: identification, tissue distribution and mRNA expression responses to periprandial and fasting. *Fish Physiol Biochem*. (2016) 42:39–49. doi: 10.1007/s10695-015-0115-0
55. Ma A, He M, Bai J, Wong MK, Ko WK, Wong AO. Dual role of insulin in spexin regulation: functional link between food intake and spexin expression in a fish model. *Endocrinology*. (2017) 158:560–77. doi: 10.1210/en.2016-1534
56. Salzburger W. Understanding explosive diversification through cichlid fish genomics. *Nat Rev Genet*. (2018) 19:705–17. doi: 10.1038/s41576-018-0043-9

**Conflict of Interest:** The authors declare that the research was conducted in the absence of any commercial or financial relationships that could be construed as a potential conflict of interest.

Copyright © 2020 Cohen, Hausken, Bonfil, Gutnick and Levavi-Sivan. This is an open-access article distributed under the terms of the Creative Commons Attribution License (CC BY). The use, distribution or reproduction in other forums is permitted, provided the original author(s) and the copyright owner(s) are credited and that the original publication in this journal is cited, in accordance with accepted academic practice. No use, distribution or reproduction is permitted which does not comply with these terms.