



Acting on hormone receptors with minimal side effect on cell proliferation: a timely challenge illustrated with GLP-1R and GPER

Véronique Gigoux* and Daniel Fourmy

Université de Toulouse, Université Paul Sabatier, Toulouse, France

Edited by:

Hubert Vaudry, University of Rouen, France

Reviewed by:

Lisa Chopin, Queensland University of Technology, Australia

Terry Moody, National Cancer Institute, USA

***Correspondence:**

Véronique Gigoux, CHU Rangueil – INSERM, Université de Toulouse, Université Paul Sabatier, EA4552, 1 Avenue Jean Poulhès, BP 84225, 31432 Toulouse Cedex 4, France.
e-mail: veronique.gigoux@inserm.fr

G protein-coupled receptors (GPCRs) constitute a large family of receptors that sense molecules outside the cell and activate inside signal transduction pathways and cellular responses. GPCR are involved in a wide variety of physiological processes, including in the neuroendocrine system. GPCR are also involved in many diseases and are the target of 30% of marketed medicinal drugs. Whereas the majority of the GPCR-targeting drugs have proved their therapeutic benefit, some of them were associated with undesired effects. We develop two examples of used drugs whose therapeutic benefits are tarnished by carcinogenesis risks. The chronic administration of glucagon-like peptide-1 (GLP-1) analogs widely used to treat type-2 diabetes was associated with an increased risk of pancreatic or thyroid cancers. The long-term treatment with the estrogen antagonist tamoxifen, developed to target breast cancer overexpressing estrogen receptors ER, presents agonist activity on the G protein-coupled estrogen receptor which is associated with an increased incidence of endometrial cancer and breast cancer resistance to hormonotherapy. We point out and discuss the need of pharmacological studies to understand and overcome the undesired effects associated with the chronic administration of GPCR ligands. In fact, biological effects triggered by GPCR often result from the activation of multiple intracellular signaling pathways. Deciphering which signaling networks are engaged following GPCR activation appears to be primordial to unveil their contribution in the physiological and physiopathological processes. The development of biased agonists to elucidate the role of the different signaling mechanisms mediated by GPCR activation will allow the generation of new therapeutic agents with improved efficacy and reduced side effects. In this regard, the identification of GLP-1R biased ligands promoting insulin secretion without inducing pro-tumoral effects would offer therapeutic benefit.

Keywords: receptor, G protein, arrestin, GLP-1, estrogen, biased ligands, adverse effects, cancer

INTRODUCTION

Seven transmembrane receptors, also termed G protein-coupled receptors (GPCR), form the largest class of the cell surface membrane receptors, involving 850 members in the human genome. GPCR are generally expressed in several different tissues in the same individual and involved in numerous physiological processes, including in the neuroendocrine system by playing a pivotal role in the control of feeding behavior, reproduction, growth, hydromineral homeostasis and stress response. At the cellular level, biological effects triggered by GPCR often result from the activation of multiple intracellular signaling pathways which are dependent or independent of G protein coupling (Rajagopal et al., 2010a).

Near 30% of therapeutic agents on the pharmaceutical market target GPCR (Hopkins and Groom, 2002). Whereas the majority of the GPCR-targeting drugs have proved their therapeutic benefit, some of them were associated with undesired effects (Table 1). Around 70% of the drugs which target GPCR are derived from the natural ligand and the use of agonist mimetics in clinical indication can act on the different tissues expressing the targeted GPCR and potentially induce undesired effects. Notably, prolonged treatment

with GPCR-targeting agonist analogs was shown to induce preneoplastic and tumoral side effects. Here, we develop two examples of the use of GPCR-targeting drugs whose therapeutic benefits are tarnished by carcinogenesis risks. As a first example, glucagon-like peptide-1 receptor (GLP-1R) agonists used as anti-diabetic treatment were shown to induce preneoplastic lesions and/or cancers in the pancreas and the thyroid. The second example of ligands that we chose to develop does not initially target a GPCR, but the unexpected undesired effect is associated with a new GPCR target. Indeed, nuclear estrogen receptor antagonists such as tamoxifen are a breakthrough in the therapy and the prevention of breast cancer; however, long-term treatment was shown to be associated with an increased risk in endometrial cancer which was explained by the tamoxifen-induced activation of a GPCR, named G protein-coupled estrogen receptor (GPER).

We point out and discuss the need of more pharmacological studies to understand and overcome the undesired effects associated with the chronic administration of ligands which target GPCR. Deciphering the signaling networks engaged following GPCR activation appears to be primordial to unveil

Table 1 | Examples of ligands used for clinical indication in endocrinology with undesired side effect.

Receptor	Ligand	Clinical indication	Undesired side effects	Reference
Dopamine-R	Antagonist	Schizophrenia/bipolar disorder (<i>Central nervous system</i>)	Diabetes (<i>Pancreatic β-cells:serotonin, histamine, muscarinic antagonism</i>)	Nasrallah (2008), Medved et al. (2009)
EstrogenR/ GPER	Tamoxifen	Breast cancer/osteoporosis	Endometrial cancer/uterine sarcoma/ovarian cancer Tamoxifen breast cancer resistance	Du et al. (2012a), Ignatov et al. (2010a), He et al. (2012) Wei et al. (2012)
GLP-1R	GLP-1 analogs	Diabetes (<i>pancreatic β cell</i>)	Preneoplasia/pancreatitis (<i>Pancreatic duct cell</i>) Medullary thyroid cancer (<i>Thyroid C-cell</i>)	Nachnani et al. (2010), Gier et al. (2012a), Elashoff et al. (2011) Bjerre Knudsen et al. (2010), Madsen et al. (2012), Victoza (Liraglutide) Injection (2012)
GnRH-R	Agonist	Prostate cancer (<i>anterior pituitary</i>)	Diabetes	Kintzel et al. (2008), Saylor and Smith (2009)
NPY-R		Eating disorders (<i>Brain</i>)	Neuroblastoma	Lu et al. (2010)
PTH-R	Agonist	Osteoporosis (<i>Osteoblast</i>)	Osteosarcoma (<i>Mesenchymal stem cell</i>)	Subbiah et al. (2010), Hodsman et al. (2005)
Serotonin 5HT4R	Agonist	Gastrointestinal disorder (<i>enteric nervous system in GI tract</i>)	Cardiovascular disease	Tack et al. (2012)
SSTR	Somatostatin analogs	Acromegaly (<i>Pituitary: suppress GH/IGF-1 secretion</i>) Carcinoid tumors/Vipomas Endocrine tumor	Hypo/hyperglycemia Hypothyroidism (<i>Pituitary: suppress secretion TSH</i>) Pancreatitis	

The cells or organs targeted by the drug in the clinical indication or in the adverse effects are given in parenthesis.

their contribution in the physiological and physiopathological processes.

THE GLUCAGON-LIKE PEPTIDE-1 RECEPTOR

One of the main physiological roles of GLP-1 is to enhance insulin secretion in a glucose-dependent manner. Thus, GLP-1 is an incretin hormone released after meals by L cells in the intestine (**Figure 1**) (Mojsov et al., 1987). GLP-1 exerts its physiological effects through binding to its specific G protein-coupled receptor, GLP-1R, which is primarily and positively coupled to adenylyl cyclase, through G α s-containing heterotrimeric G proteins, leading to the activation of second messenger pathways such as protein kinase A (PKA) and cAMP-regulated guanine nucleotide exchange factor II (cAMP-GEFII, also known as Epac2) signaling pathways (**Figure 2**) (Thorens, 1992; Kashima et al., 2001; Mayo et al., 2003; Holz, 2004; Seino and Shibasaki, 2005; Doyle and Egan, 2007; Holst, 2007). In addition to its stimulatory effect on insulin secretion, GLP-1 suppresses the secretion of glucagon, a counter-hormone to insulin, thus maintaining glucose homeostasis following a meal (Nauck et al., 1993). GLP-1 plays also a key role in the homeostasis of β -cell mass by inducing β -cell proliferation and protecting against apoptosis which favor an expansion of β -cell mass (**Figure 2**) (Doyle and Egan, 2007). These functions are mediated *via* the activation of the cAMP/PKA/CREB (cAMP-responsive element binding protein) and the transactivation of the EGF-R (epidermal growth factor receptor) leading to the

activation of phosphatidylinositol-3 kinase (PI3K), Protein Kinase C ζ (PKC ζ), Akt-protein kinase B, Extracellular Regulated Kinase (ERK1/2) signaling pathways and to the up-regulation of the expression of the cell cycle regulator cyclin D1 (Buteau et al., 2003; Drucker, 2003; Trumper et al., 2005; Park et al., 2006; Doyle and Egan, 2007). The antiapoptotic effect of GLP-1 in β -cells also involves β -arrestin1 recruitment by GLP-1R which mediates the ERK1/2 activation leading to the phosphorylation and inactivation of the pro-apoptotic protein Bad (Quoyer et al., 2010). The properties of GLP-1 on insulin secretion and β -cell proliferation make GLP-1 one of the most promising therapeutic agent to treat type-2 diabetes. Moreover, GLP-1 analogs offer the advantage of improved glycemic control of type-2 diabetic patients, without inducing severe hypoglycemia (Phillips and Prins, 2011).

On the other hand, GLP-1 receptor activation directly promotes cell proliferation and enhances cell survival in several tissues including neurons, fibroblasts, and cardiomyocytes (Brubaker and Drucker, 2004).

COULD ANTI-DIABETIC TREATMENT WITH GLP-1 ANALOGS INDUCE CANCERS?

Two GLP-1 mimetic drugs are now widely used to treat type-2 diabetes, exendin-4/exenatide and liraglutide, because of their optimal glucose lowering capacity with low risk of hypoglycemia (Chia and Egan, 2008; Buse et al., 2009; Nauck et al., 2009). Pre-clinical and clinical studies indicated that exenatide and liraglutide

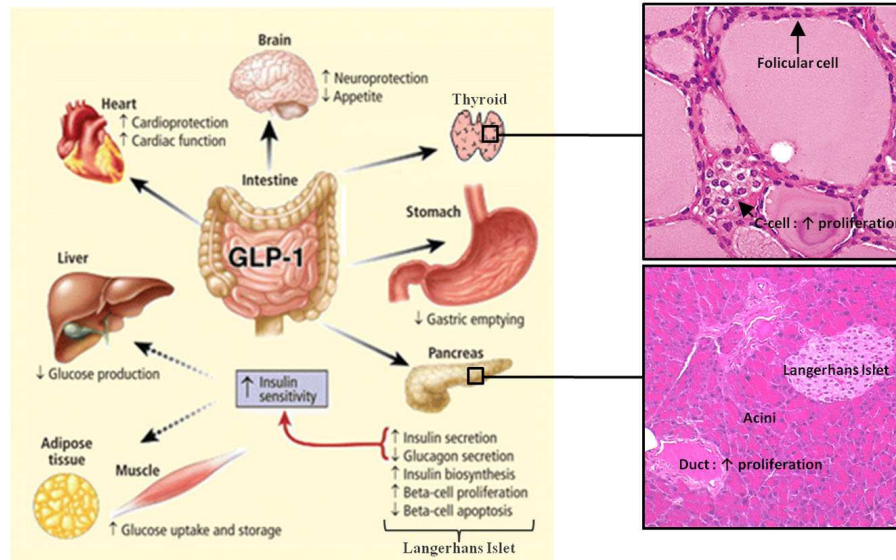


FIGURE 1 | Actions of GLP-1 in peripheral tissues. Most of the effects of GLP-1 are mediated by direct interaction with GLP-1R on specific tissues. However, the actions of GLP-1 in liver, fat, and muscle most likely occur

through indirect mechanisms. GLP-1 induces the proliferation of pancreatic duct cells and thyroid C-cells. Reprinted from *Gastroenterology* (Baggio and Drucker, 2007).

exert a positive effect on insulin secretion, β -cell proliferation, and survival (Goke et al., 1993; Chang et al., 2003; Drucker, 2006; Vilsboll et al., 2007, 2008; Pratley and Gilbert, 2008; Madsbad, 2009; Vilsboll, 2009). On the other hand, recent studies showed that the use of these GLP-1R agonists in anti-diabetic treatment can be associated with an increase of cancer risk. The main organs where concerns exist about the trophic effects of GLP-1 analogs and their potential carcinogenic propensity are the pancreas and the thyroid, both organs expressing GLP-1R.

The pancreas

Recent studies reported that both treatments with exenatide and liraglutide are associated with an increased risk of pancreatitis in humans, a disease which represents a known risk factor for pancreatic cancer (Denker and Dimarco, 2006; Cure et al., 2008; Tripathy et al., 2008; Greer and Whitcomb, 2009). The chronic administration of GLP-1 agonists was also shown to be associated with increased serum lipase and amylase in many patients with type-2 diabetes, suggesting pancreatic damage and inflammation (Lando et al., 2012). Evaluation of the U.S. Food and Drug Administration (FDA) adverse events database by Elashoff et al. (2011), showed 10- and 3-fold increases in the incidence of pancreatitis and pancreatic cancer, respectively, in diabetic patients treated with exenatide as compared to other therapies (rosiglitazone, nateglinide, repaglinide, and glipizide) (Elashoff et al., 2011).

Undesired effects were also observed on different animal models. Indeed, chronic administration of exenatide during 12 weeks increased pancreatic acinar inflammation, sensitized to pancreatitis, and promoted pancreatic duct hyperplasia in rats or in the LSL-Kras^{G12D}/+/Pdx1-Cre[±] murine model of pancreatic carcinogenesis (Nachnani et al., 2010; Gier et al., 2012a). The

authors of this study related these adverse effects to the expression of GLP-1R in duct cells of the exocrine pancreatic tissue (Gier et al., 2012a). Whereas GLP-1R expression is clearly established in normal β -cells, its expression in the exocrine pancreas raises questions as it could be detected or not in the ductal or acinar cells according to the study (Horsch et al., 1997; Xu et al., 1999; Korner et al., 2007; Tornehave et al., 2008; Gier et al., 2012a). Importantly, inflammation and/or tissue damage can promote neoplasia by altering the fate of acinar and endocrine differentiated cells which can transdifferentiate to ductal cells, thus leading to ductal cell proliferation and preneoplastic lesion formation eventually progressing to pancreatic cancer (Jura et al., 2005; Means et al., 2005; Hernandez-Munoz et al., 2008; Gidekel Friedlander et al., 2009; Logsdon and Ji, 2009; Rebours et al., 2009; Perez-Mancera et al., 2012). Other studies carried on normal and diabetic mice and rats treated with exenatide or liraglutide with or without induction of experimental pancreatic injury did not find any relationship between incretin therapy and the development of pancreatic disease such as pancreatitis and pancreatic tumor (Koehler and Drucker, 2006; Koehler et al., 2009; Tatarkiewicz et al., 2010). But, in these last studies, GLP-1 agonists administration did not exceed 6 days or 4 weeks. Nevertheless, exenatide treatment upregulated PAP/Reg3b (pancreatitis-associated protein) expression as already observed in the course of pancreatic carcinogenesis and pancreatitis (Graf et al., 2006; Gigoux et al., 2008; Koehler et al., 2009; Tatarkiewicz et al., 2010). At last, Nyborg et al. (2012) did not observe pancreatitis in non-diabetic mice, rats, or monkeys after 2 years of liraglutide treatment at exposure levels up to 60 times higher than in humans.

There are very few data on GLP-1R-induced proliferative signaling in pancreatic duct cells. Gier et al. (2012a) showed that

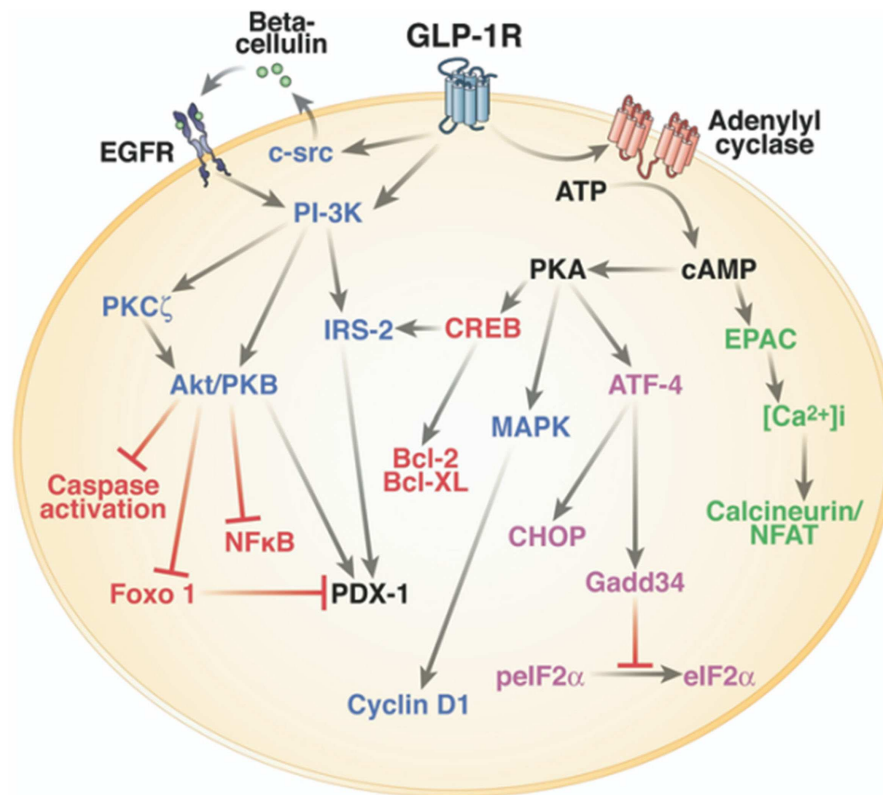


FIGURE 2 | Intracellular signaling pathways of GLP-1R in the pancreatic β -cell. One of the main physiological roles of GLP-1 is to enhance insulin secretion in a glucose-dependent manner. To stimulate insulin secretion and biosynthesis (green), GLP-1R coupled to adenylyl cyclase leading to the activation of cAMP-regulated guanine nucleotide exchange factor II (cAMP-GEFII, also known as Epac2) signaling pathway. GLP-1 plays also a key role in the homeostasis of β -cell mass by inducing β -cell proliferation (blue) and protecting against apoptosis (red). These functions are mediated via the activation of the cAMP/PKA/CREB (cAMP-responsive element binding protein) and the transactivation of the epidermal growth factor receptor (EGF-R) leading to the activation of

phosphatidylinositol-3 kinase (PI3K), Protein Kinase C ζ (PKC ζ), Akt-protein kinase B, ERK1/2 (Extracellular Regulated Kinase, named also MAPK, Mitogen-Activated Protein Kinase) signaling pathways, and to the up-regulation of the expression of the cell cycle regulator cyclin D1. GLP-1R agonists also improve β -cell function and survival during endoplasmic reticulum stress (purple) by enhancing of ATF-4 translation in a cAMP- and PKA-dependent manner, promoting the up-regulation of the endoplasmic reticulum stress markers CHOP and GADD34 expression and the dephosphorylation of eIF2 α . Of note, there is considerable overlap between pathways induced by the GLP-1R activation. Reprinted from Gastroenterology (Baggio and Drucker, 2007).

exenatide induced proliferative signaling pathways in human pancreatic duct cell line by increasing CREB and ERK1/2 phosphorylation and cyclin D1 expression. ERK1/2 phosphorylation induced by exenatide is dependent of EGF-R activation (Buteau et al., 2003; MacDonald et al., 2003). Koehler and Drucker (2006) also showed that exenatide increased cAMP or induced ERK1/2 activation in some pancreatic cancer cell lines although the proliferation of these cell lines was not modulated.

The thyroid

Elashoff et al. (2011) showed a 4.7-fold increase in the incidence of thyroid cancer in diabetic patients treated with exenatide as compared to other therapies (rosiglitazone, nateglinide, repaglinide, and glipizide), by analyzing the U.S. FDA's database of reported adverse events. In contrast, Hegedus et al. (2011) reported no significant risk for the activation or growth of C-cell cancer in response to liraglutide over a 2-year period. Nevertheless, GLP-1R expression was found in thyroid glands of 20, 91, and 100%

of patients with papillary carcinoma, medullary thyroid cancer (MTC), and C-Cell hyperplasia, respectively (Gier et al., 2012b). GLP-1R could be also detected in human normal thyroids (Bjerre Knudsen et al., 2010; Gier et al., 2012b). Therefore, GLP-1 analogs might increase the risk of thyroid C-cell pathology, but this awaits confirmation in humans.

Preclinical studies carried out on rodents treated with liraglutide or exenatide showed a higher incidence of C-cell neoplasia and tumor formation in the thyroid [European Medicines Agency (EMA), 2006, 2009, 2011; Bjerre Knudsen et al., 2010; U.S. Food and Drug Administration, 2011; Bulchandani et al., 2012; Madsen et al., 2012; Victoza (Liraglutide) Injection, 2012]. Indeed, a continuous exposure to liraglutide or exenatide was associated with marked increases in plasma calcitonin and in the incidence of C-cell hyperplasia. These effects were mediated by the GLP-1R as they were not seen in GLP-1R knockout mice (Bjerre Knudsen et al., 2010; Madsen et al., 2012). C-cell hyperplasia is considered as a preneoplastic lesion that constitutes *in situ* carcinoma of the

thyroid C-cells (LiVolsi, 1997) and calcitonin, an hormone secreted by thyroid C-cells, is regarded as an important clinical biomarker for C-cell diseases such as MTC and hereditary C-cell hyperplasia because of its high sensitivity and specificity (Elisei et al., 2004; Costante et al., 2007; Machens et al., 2009). Neoplasms were not observed in monkeys after long-term liraglutide administration, indicating that GLP-1 induced C-cell proliferation in rodents but not in primates and suggesting that possible species-specific differences in GLP-1R expression and activation might occur in the thyroid (Bjerre Knudsen et al., 2010).

There are very few data on GLP-1R-induced proliferative signaling in thyroid C-cells. Chronic administration of liraglutide did not modify ERK phosphorylation, but increased ribosomal S6 phosphorylation, a downstream target of mTor and PI3K activation which plays a role in regulating cell proliferation and survival by growth factors (Sengupta et al., 2010; Madsen et al., 2012).

In conclusion, results obtained from preclinical and clinical studies tend to support a pro-tumoral action of GLP-1 in the pancreas and the thyroid, although few studies contradict this role. The relatively short time of chronic treatment with GLP-1 analogs in some studies could explain the absence of significant pro-tumoral effects. Moreover, this raises the question of whether GLP-1 can induce preneoplastic lesions and cancer alone or enable pre-existing lesions to progress to cancer. Further studies should be conducted to determine whether GLP-1 agonists induce or sensitize to pancreatic and thyroid diseases, by comparing chronic administration of GLP-1 mimetics in rodents presenting or not previous injury in the pancreas and the thyroid. However, it is important to note that diabetes is recognized to increase the incidence of pancreatitis and of a variety of cancers, including breast, pancreas, and colon cancers (Giovannucci et al., 2010; Girman et al., 2010; Pandey et al., 2011). Of note, GLP-1R is overexpressed in neuroendocrine pancreatic tumors, more particularly in insulinomas (Korner et al., 2007; Christ et al., 2010). In the current state of knowledge, GLP-1 agonists remain contra-indicated in patients with a personal or family history of MTC or multiple endocrine neoplasia type-2 (Anonymous, 2010; Victoza (Liraglutide) Injection, 2012). Importantly, Risk Evaluation and Mitigation Strategies program including a FDA safety warning published recommendations regarding the risk of thyroid cancer and pancreatitis after use of liraglutide and after dose increases (U.S. Food and Drug Administration, 2011).

Very few data are available on the proliferative intracellular pathways mediated by GLP-1R in pancreatic ductal cells and thyroid C-cells. Nevertheless, in the current state of knowledge, GLP-1R induces proliferation of these cells by same intracellular pathways as in the pancreatic β -cells. The identification of GLP-1 analogs that promote insulin secretion to treat type-2 diabetes without inducing pro-tumoral effects is therefore a timely challenging issue. Glucose-insulinotropic peptide (GIP) incretin could be also another alternative in type-2 diabetes treatment, especially as the GIP receptor (GIP-R) was not expressed in the normal thyroid and the exocrine pancreas unlike GLP-1R (Ahren, 2009; Waser et al., 2011, 2012). But, these clinical indication of GIP should be effective only after normalization of patient's glycemia which can restore the expression of GIP-R in β -cells (Holst et al.,

1997; Vilsboll et al., 2002; Piteau et al., 2007; Younan and Rashed, 2007).

THE ESTROGEN RECEPTORS ER/GPER

Estrogen hormone regulates the growth and the differentiation of many tissues playing a critical role in the development of the reproductive system but also in the nervous, immune, vascular, muscular, skeletal, and endocrine systems. The binding of 17 β -estradiol, the natural endogenous estrogen, to the estrogen receptors ER α and ER β (ER) is the main mechanism responsible for the diverse biological effects of the hormone (Pedram et al., 2006; Meyer and Barton, 2009; Meyer et al., 2009). These highly homologous receptors can shuttle between the cytoplasm and the nucleus and function as ligand-activated nuclear transcription factors that bind *cis*-acting estrogen response elements in the promoter and enhancer regions of hormonally regulated genes (genomic effects of estrogen) (Figure 3) (Ring and Dowsett, 2004; Edwards, 2005; Carroll and Brown, 2006). Estrogen also induces some rapid biochemical responses to estrogen stimulation which occur in seconds to minutes, such as the increase in intracellular free calcium and the activation of multiple intracellular kinases including ERK, PI3K, PKA, and PKC (non-genomic effects of estrogen) (Chen et al., 2008).

Estrogen is the one of the risk factors for breast tumors, which accounts for 40% of cancer among the women and approximately 50% of all breast cancers demonstrated elevated levels of ER expression (Pike et al., 2004). Consequently, anti-estrogen therapy has been extended such as the gold standard tamoxifen (Figure 3) (Deroo and Korach, 2006; Lorand et al., 2010). Unfortunately, long-term treatment with tamoxifen is associated with adverse effects such as an increased incidence of endometrial cancer and with breast cancer resistance to hormonotherapy. Moreover, these events were shown to be associated with G protein signaling- or growth factor-mediated pathways which were not blocked by tamoxifen antagonist, leading to the prediction that an alternative membrane-bound estrogen receptor exists (Wehling, 1997; Hammes and Levin, 2007; Meyer and Barton, 2009). In fact, an orphan GPCR was identified as an estrogen-binding membrane GPCR from vascular and cancer cells and is now included in the official GPCR nomenclature and was designated GPER or GPR30 by the International Union of Pharmacology (Revankar et al., 2005; Thomas et al., 2005; Prossnitz et al., 2008a; Alexander et al., 2011). Its localization seems to be predominantly intracellular due to the constitutive internalization of plasma membrane GPER (Figure 3) (Revankar et al., 2005; Otto et al., 2008; Cheng et al., 2011; Sanden et al., 2011). GPER is widely expressed in cancer cell lines and primary tumors of the breast (Carmeci et al., 1997; Filardo et al., 2000; Revankar et al., 2005; Albanito et al., 2008a), endometrium (Vivacqua et al., 2006a; Leblanc et al., 2007; He et al., 2009), ovaries (Albanito et al., 2007, 2008b; Henic et al., 2009), thyroid (Vivacqua et al., 2006b), lung (Siegfried et al., 2009), prostate (Chan et al., 2010), and testicular germ cells (Franco et al., 2011). GPER does not only bind estrogens but also other substances such as tamoxifen which displays estrogenic agonist activity on GPER notably in the reproductive systems (Figure 3) (McDonnell, 1999; Filardo et al., 2000; Thomas and Dong, 2006; Jordan, 2007; Albanito et al., 2008b; Orlando et al., 2010; Chevalier et al., 2012).

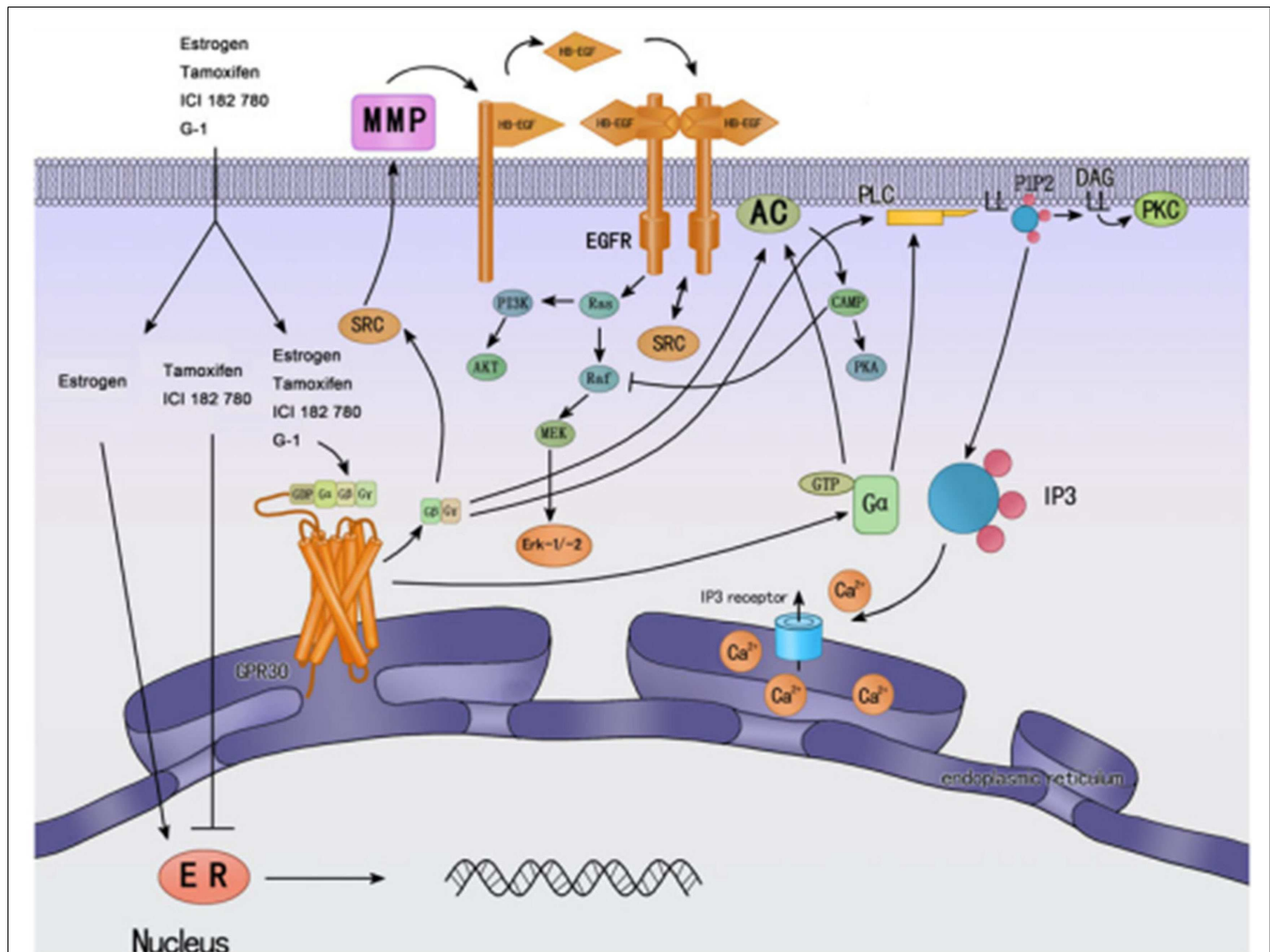


FIGURE 3 | Cellular signaling mechanisms of GPER and classic nuclear estrogen receptors ERs (↓ activate; ⊥ inhibit). ERs are widely accepted as mainly mediating gene transcriptional regulation. Tamoxifen is an ER antagonist in some tissue, such as breast cancer, while has agonistic effects in other tissues, such as endometrium. GPER was found

predominantly in the endoplasmic reticulum; estrogen and tamoxifen can bind GPER, and then activate multiple cellular effectors, such as ERK, PI3K, and PLC, and other rapid cellular processes. Most of them are mediated by transactivation of EGFR. Reprinted from Endocrinology (Wang et al., 2010).

Indeed, tamoxifen stimulates the cell proliferation and growth of cell lines of thyroid, ovarian, endometrial, and breast cancers (Filardo et al., 2000; Thomas et al., 2005; Vivacqua et al., 2006a; Albanito et al., 2007; Prossnitz et al., 2008b; Pandey et al., 2009). The discovery of GPER-selective agents and the elaboration of GPER knockout mice helped to examine GPER signaling pathways and strongly supported that GPER is associated with cancer proliferation, migration, invasion, metastasis, differentiation, prognosis, and drug resistance (Prossnitz et al., 2008b; Wang et al., 2010).

COULD ESTROGEN ANTAGONISTS USED IN BREAST CANCER TREATMENT INDUCE CANCER IN OTHER TISSUES?

An increased incidence of uterine malignancies in association with tamoxifen treatment has been reported. The incidence and severity of endometrial cancer increased by 4- to 6.9-fold in women

with 5 years of exposure to tamoxifen (van Leeuwen et al., 1994; Bernstein et al., 1999; Bergman et al., 2000; Goldstein, 2001). Uterine sarcoma has been also reported to occur more frequently among long-term users (≥ 2 years) of tamoxifen than non-users (Wickerham et al., 2002). In support to these data, tamoxifen has been shown to stimulate the proliferation and the invasion of uterine cells *in vivo* and of human endometrial carcinoma cell lines and these effects were mediated by GPER (Gottardis et al., 1988; Jamil et al., 1991; Schwartz et al., 1997; Du et al., 2012a). Indeed, tamoxifen promoted cell proliferation and invasion of the human endometrial cancer cell lines ISHIKAWA and KLE, while the down-regulation of GPER partly or completely prevented these effects (Du et al., 2012a). GPER is widely expressed in primary tumors of endometrium including ER-negative endometrial carcinomas (He et al., 2009). High levels of GPER expression correlate with an increased incidence of endometrial cancer and with

tamoxifen-induced uterine pathology and predict poor survival in endometrial cancer (Smith et al., 2007; Ignatov et al., 2010a). All together, these data strongly support that tamoxifen treatment might have a cancer-promoting effect through GPER.

G protein-coupled estrogen receptor promotes carcinogenesis by endometrial cancer cells as down-regulation of GPER led to reduce growth and invasion by RL95 endometrial cancer cells treated with 17 β -estradiol and to decrease tumorigenesis *in vivo* (He et al., 2009, 2012). GPER mediates the proliferative effects of estrogen and tamoxifen in endometrial cancer cells through EGF-R transactivation leading to the activation of ERKs and PI3K pathways (Vivacqua et al., 2006a; Prossnitz et al., 2008b; He et al., 2009, 2012; Du et al., 2012a; Lappano et al., 2012; Wei et al., 2012). GPER also mediates invasion by endometrial cancer cells through the stimulation of ERK pathway, as well as the increase of interleukin-6 secretion, leading to the production and activation of matrix metalloproteinases MMP-2 and MMP-9 known to degrade extracellular matrix components and to be involved in cancer invasion and metastasis (He et al., 2009, 2012; Du et al., 2012a).

COULD GPER BE INVOLVED IN BREAST CANCER RESISTANCE TO HORMONOTHERAPY?

The majority of breast cancers is ER-positive and depends on estrogen for growth. Therefore, blocking estrogen signaling remains the strategy of choice for the treatment and the prevention of breast cancer. Tamoxifen is the prototypical drug that targets ER. It presents potent anti-estrogenic properties and has been used extensively for the past 40 years to treat and prevent breast cancer (Jordan and Morrow, 1999). Tamoxifen treatment is very effective in tumors expressing ER receptors and significantly reduces the mortality of breast cancer patients (Jordan and Morrow, 1999; Powles et al., 2007). Many patients with ER-positive breast cancer have benefited from anti-hormonal treatment, but unfortunately, almost 30–50% of patients with advanced disease did not respond to first-line treatment with tamoxifen. Furthermore, long-term tamoxifen therapy causes the development of acquired resistance (Early Breast Cancer Trialists' Collaborative Group (EBCTCG), 2005). Indeed, development of resistance is very frequent and tamoxifen is not effective for more than 5 years (Saphner et al., 1996; Clarke et al., 2001; Early Breast Cancer Trialists' Collaborative Group (EBCTCG), 2005; Barron et al., 2007; Brewster et al., 2008).

The tumor resistance to tamoxifen treatment is associated to a decrease or a loss of ER expression and to an increase of GPER expression. GPER protein is expressed in ~50% of all breast cancers including half of ER-negative tumors and correlates with increased tumor size and metastasis (Filardo et al., 2006; Ignatov et al., 2011). Moreover, GPER protein expression is increased in breast tumors of patients treated only with tamoxifen and in tamoxifen resistant tumor tissues correlating with a poor relapse-free survival in patients treated with tamoxifen (Filardo et al., 2006; Ignatov et al., 2011). *In vitro* prolonged tamoxifen treatment leads to an increased cell surface expression of GPER and also to clonal selection of GPER-positive MCF-7 breast cancer cells (Ignatov et al., 2010b). Thus, GPER expression is associated with an increased risk of resistance to tamoxifen and patients with breast cancer who have high GPER protein expression should not be treated with tamoxifen alone.

G protein-coupled estrogen receptor mediates the proliferative and tamoxifen-resistance effects through EGF-R transactivation leading to the phosphorylation of ERK and Akt (Filardo et al., 2000; Prossnitz et al., 2008b; Ignatov et al., 2010a,b). Thus, ERK and Akt can further stimulate transcription of different genes (even ER), leading to cell proliferation, and interfere with the activation of Smad proteins, known effectors of the TGF- β signaling, an important intracellular pathway involved in the inhibition of tumor progression (Clarke et al., 2001; Kleuser et al., 2008; Yoo et al., 2008; Ignatov et al., 2010b).

In conclusion, tamoxifen has been the only available hormonal option for the systemic treatment for breast cancer from 1973 to 2000. Despite the clinical success of tamoxifen, the development of drug resistance and endometrial cancers leads to the requirement of alternative hormonal therapy. In this regard, the knowledge of the contribution of GPER-mediated signaling in the undesired effects of estrogenic antagonist uses for breast cancer treatment should allow the future development of new molecules. Moreover, further researches are required to define the role of GPER signaling in estrogen undesired physiological effects and to elucidate the role of non-selective estrogen receptor ligands in health and disease.

NEW HOPES TO OVERCOME UNDESIRE EFFECTS

G protein-coupled receptors are generally expressed in several different tissues and involved in numerous physiological processes. Many natural ligands can bind and activate several subtypes of GPCR. This is illustrated, for example, with cholecystokinin and somatostatin receptors (Guillermet-Guibert et al., 2005; Dufresne et al., 2006). Ligands can also activate different classes of receptors as illustrated before with estrogen (Prossnitz et al., 2008a). Such a diversity of receptors activation following agonist administration can engage multiple intracellular signaling pathways and be responsible for adverse effects in treated patients. Furthermore, biological effects triggered by the same GPCR result from the activation of G protein-dependent and -independent intracellular signaling pathways. Recently, signaling engaged after GPCR recruitment of β -arrestin proteins have emerged as new G protein-independent intracellular signaling pathways (Luttrell and Gesty-Palmer, 2010; Rajagopal et al., 2010a). To increase the complexity, a single GPCR has pleiotropic signaling properties and each signal can crosstalk at different levels with the transactivation of cell surface receptor having tyrosine kinase activity (EGF-R, PDGF-R, FGF-R, for examples) or serine/threonine kinase activity (TGF- β , for example) or with the formation of multimers, thus potentially influencing the signaling pathways of the different receptors (Burch et al., 2012; Wang and Lewis, 2013). Indeed, numerous biochemical and biophysical studies supports that GPCRs can form physiologically relevant homo-, hetero-, or oligo-mers (Angers et al., 2002). Homodimerization of the GLP-1R was shown to be critical for selective coupling of the receptor to physiologically relevant signaling pathways (Harikumar et al., 2012). Indeed, disruption of GLP-1R homodimerization completely abrogated the intracellular calcium mobilization response whereas it slightly reduced cAMP formation and phosphorylation of ERK. Furthermore, GLP-1R dimerization can discriminate between peptide and non-peptide-mediated receptor activation. In the chemokine receptors family, antibodies

against the CCR2b promoted the receptor dimerization and second messenger production (Rodriguez-Frade et al., 1999), whereas an antibody directed against CCR5, that induces receptor dimerization, inhibits its function (Vila-Coro et al., 2000). Many studies were also conducted to analyze the role of GPCR heterodimerization and supported that heterodimerization could be the source of additional pharmacological properties which are different from those of the individual receptors. As a first example, the co-expression of the δ - and κ -opioid receptors in the same cell leads to an almost complete loss of binding to selective δ - and κ -ligands while preserving binding to non-selective ligands (Jordan and Devi, 1999). As a second example, somatostatin receptor SSTR1 displays internalization in cells when it is co-expressed with SSTR5, whereas monomeric SSTR1 is resistant to internalization in contrast to monomeric SSTR5, suggesting that the SSTR1 trafficking is modified by its heterodimerization with SSTR5 (Rocheville et al., 2000). Thus, homo- and heterodimerization between GPCR cause complexity in the receptor pharmacological properties that can be responsible of synergistic or antagonistic signaling cross-talks. This GPCR pharmacological and signaling complexity could account for unexpected pharmacological effects and have dramatic impacts on drug development. All together, these hallmarks indicate that undesired adverse effects can be expected with a prolonged agonist administration that targets a GPCR (Table 1). Moreover, many GPCR have already been shown to present proliferative and pro-tumoral properties (Table 2), suggesting that an increase of preneoplastic lesions and cancer incidence can potentially occur following chronic activation of GPCR. Thus, deciphering which signaling networks are engaged and orchestrated following GPCR receptor activation appears to be primordial to unveil their contribution in the cell fate.

One strategy to overcome these limitations would be to examine the initial steps following receptor activation. The release of X-ray structures of agonist/GPCR complexes (Chung et al., 2011; Lebon et al., 2011; Warne et al., 2011; Xu et al., 2011; Audet and Bouvier, 2012), the numerous biophysical and biochemical studies (Granier et al., 2007; Kahsai et al., 2011; Liu et al., 2012; Rahmeh et al., 2012) have enabled to show that different and selective ligands, named biased ligands, can induce or stabilize distinct receptor conformations and activate one (or several) signaling pathway(s) in contrast to non-biased agonists which activate all the signaling pathways (Vaidehi and Kenakin, 2010). Thus an understanding of the structure and dynamics of the ensemble of receptor conformations would greatly help the design of small molecules with functional selectivity or “biased signaling” properties and would provide more specific and efficient new drugs. Receptor structure/activity relationship studies, structure- and docking-based virtual screening are now widely applied in drug discovery and must take in account the existence of different receptor conformations activating specific signaling pathways.

Although GPCRs can modulate a large variety of distinct signaling pathways, classification of biased ligands are actually restricted to two groups depending on their ability to activate two main transduction pathways (Whalen et al., 2011): (1) G protein-biased ligands which promote G protein activation without β -arrestin recruitment and (2) β -arrestin-biased ligands which

recruit β -arrestin to the receptor and initiate consecutive signaling pathways in the absence of G protein activation.

The vast majority of biased ligands identified so far exhibits exclusive β -arrestin activity for a number of receptors (Rajagopal et al., 2010a; Whalen et al., 2011), including the AT1 angiotensin II receptor, β 1- and β 2-adrenergic receptors, or the CXCR7 decoy receptor (Wei et al., 2003; Wisler et al., 2007; Kim et al., 2008; Rajagopal et al., 2010b). The parathyroid hormone (PTH) analog, D-Trp(12),Tyr(34)-PTH(7-34), binds the PTH receptor 1 (PTH1R) and activates β -arrestin-dependent but not classical G protein-dependent signaling (Gesty-Palmer et al., 2009; Gesty-Palmer and Luttrell, 2011). In mice, this PTH biased agonist induces anabolic bone formation without stimulating bone resorption, comparatively with the non-selective agonist PTH(1-34) which induces both functions. Thus, this PTH1R biased ligand may present interesting properties for the treatment of metabolic bone diseases such as osteoporosis and is a proof of concept that the exploitation of β -arrestin biased agonism may offer therapeutic benefit.

Few ligands have been yet identified as perfect G protein-biased ligands, namely inducing G protein signal transduction without any β -arrestin recruitment (Whalen et al., 2011). GMME1 ligand binding to the CCR2 chemokine receptor leads to calcium mobilization, caspase-3 activation and consecutive cell death, but does not recruit β -arrestin2 (Rafei et al., 2009). Selective ligands that activate G protein-coupling by FSH-R (follicle-stimulating hormone receptor) and PTH-1R have been also reported (Bisello et al., 2002; Wehbi et al., 2010). Of note, some ligands classified as G protein-biased can induce a weak β -arrestin recruitment by the targeted GPCR (Whalen et al., 2011). For example, oxyntomodulin and glucagon are full agonists in GLP-1R-mediated cAMP accumulation but partial agonists in recruiting β -arrestins to this receptor, suggesting that oxyntomodulin and glucagon are biased ligands on the GLP-1R (Jorgensen et al., 2007).

Interestingly, some ligands are biased in regard to the different G protein families and can trigger opposite cellular responses (Reversi et al., 2005; Sensken et al., 2008). For example, oxytocin receptors (OTR) coupling to Gi inhibits cell proliferation, whereas its coupling to Gq stimulates cell proliferation. Atosiban, an oxytocin derivative, was shown to act as a competitive antagonist on OTR/Gq coupling, and to display agonistic properties on OTR/Gi-coupling, thereby leading to the selective inhibition of cell growth (Reversi et al., 2005; Busnelli et al., 2012). SOM230 which activates the somatostatin receptor sst2A behaves as agonist for Gi coupling and inhibition of adenylyl cyclase, but antagonizes somatostatin's actions on intracellular calcium and ERK phosphorylation which can be activated by a Gi/Go independent process (Cescato et al., 2010).

Biased signaling can also exist with respect to other signaling proteins than G proteins and arrestins. The internalization of apelin receptor takes different signaling pathways depending of the apelin isoforms (Lee et al., 2010). Indeed, apelin-13-activated receptors dissociated rapidly from β -arrestin1 and were recycled to the cell surface through a Rab4-dependent mechanism, while the apelin-36-internalized receptors trafficked with β -arrestin1 to intracellular compartments and were targeted by Rab7 to lysosomes for degradation. CCL19 and CCL21 ligands both induce

Table 2 | Examples of Neuropeptide GPCRs with pro-tumoral activities and properties.

Ligands	Receptors	Target	Activity	Reference
Adrenocorticotrophic hormone	MC2R	Prostate	Proliferation	Hafiz et al. (2012)
Angiotensin II	AT1R	Breast	Proliferation, adhesion, migration, invasion	Rodrigues-Ferreira et al. (2012), Du et al. (2012b)
Gastrin	CCK2	Pancreas, stomach	Proliferation, adhesion	Dufresne et al. (2006), Cayrol et al. (2006), Bierkamp et al. (2004), Clerc et al. (2002a,b), Mathieu et al. (2005)
Glucagon-like peptide-1	GLP-1R	Exocrine pancreas Thyroid	Pro-tumoral	Nachnani et al. (2010), Gier et al. (2012a), Elashoff et al. (2011), Bjerre Knudsen et al. (2010), Madsen et al. (2012), Victoza (Liraglutide) Injection (2012)
Ghrelin	GHS-R	Breast Prostate Endometrium Stomach	Proliferation, migration Proliferation Proliferation	Jeffery et al. (2005) Yeh et al. (2005), Jeffery et al. (2002) Fung et al. (2010) Tian and Fan (2012)
Melanin-concentrating hormone	MCHR1	colon	Pro-tumoral, apoptosis	Nagel et al. (2012)
Neuromedin B	NMB-R	Colon Breast	Proliferation Apoptosis, proliferation	Matusiak et al. (2005) Park et al. (2011)
Neuromedin U	NMU-R2	Pancreas	Migration, invasion	Ketterer et al. (2009)
Neuropeptide Y	NPY Y5-R NPY Y2-R NPY Y1-R	Breast Neuroblastoma Prostate	Proliferation, migration Proliferation, angiogenesis Proliferation	Medeiros et al. (2012), Sheriff et al. (2010) Lu et al. (2010) Ruscica et al. (2006)
Neurotensin	NTSR1/3	Colon	Proliferation, Pro-tumoral	Muller et al. (2011)
Parathyroid hormone	PTH-R	bone	Pro-tumoral	Subbiah et al. (2010), Hodsmann et al. (2005)
Pituitary adenylate cyclase-activating polypeptide	PAC1	Lung	Proliferation	Moody et al. (2012)
Prokineticin 1/2	PROKR1/2	Thyroid	Angiogenesis	Monnier and Samson (2010)
Relaxin	RXFP1	Uterus Prostate	Proliferation, apoptosis Pro-tumoral, metastasis, proliferation	Suzuki et al. (2012) Feng et al. (2010)
Urotensin II	UTR	Prostate Lung	Migration, invasion Proliferation	Grieco et al. (2011) Wu et al. (2010)
Vasoactive intestinal peptide	VPAC1	Prostate Brain (glioblastoma) Breast Lung	Proliferation, migration Migration Angiogenesis Proliferation	Fernandez-Martinez et al. (2010) Cochaud et al. (2010) Valdehita et al. (2012) Moody et al. (2000)
26RFa	GPR103	Prostate	Migration	Alonzeau et al. (2012)

β -arrestin2 recruitment by the receptor CCR7, but activate different GRK (G protein receptor kinase) isoforms (Zidar et al., 2009). Indeed, CCL19 leads to robust CCR7 phosphorylation and β -arrestin2 recruitment catalyzed by both GRK3 and GRK6 whereas CCL21 activates GRK6 alone. The functional consequences are that only CCL19 leads to classical receptor desensitization whereas both agonists are capable of signaling through GRK6 and β -arrestin2 to ERK kinases.

THE GLP-1R

Results obtained from preclinical and clinical studies tend to support a pro-tumoral action of GLP-1 in the pancreas and the thyroid. Deciphering the signaling networks engaged following GLP-1R agonist administration in pancreatic ductal cells and thyroid C-cells comparatively to pancreatic β -cells is critical to unveil their contribution in the different cellular processes. The identification of GLP-1 analogs that promote insulin secretion to treat

type-2 diabetes without inducing pro-tumoral effects is therefore a timely challenging issue. Like most GPCRs, the GLP-1R couples to different classes of heterotrimeric G proteins, including *G α s*, *G α q*, and *G α i*, regulatory proteins such as the β -arrestins, and activates multiple signaling pathways such as cAMP production, intracellular calcium mobilization, phosphorylation of ERK1/2. While GLP-1 can activate all of these signaling pathways, some compounds were shown to present biased activity on GLP-1R. Oxyntomodulin and glucagon biased the GLP-1R toward cAMP accumulation over the recruitment of β -arrestins, BMS21 compound toward ERK1/2 activation and cAMP production over β -arrestins recruitment, BETP compound toward calcium mobilization and β -arrestins recruitment over cAMP production and ERK1/2 activation (Jorgensen et al., 2007; Wootten et al., 2013). Moreover, some molecules acting as allosteric modulators were shown to modulate GLP-1R agonist-mediated signaling pathways (Willard et al., 2012; Wootten et al., 2013). For example, BETP increases the affinity of GLP-1R to oxyntomodulin and potentiates the activation of cAMP production induced by oxyntomodulin.

The most crucial GLP-1R signaling pathway for enhancing glucose-dependent insulin secretion involved the receptor coupling to *G α s* proteins and the activation of cAMP production (Baggio and Drucker, 2007). While GLP-1 analogs are currently tested for their capacity to activate *G α s* protein and cAMP production, their effects on other signaling pathways, particularly those involved in cell proliferation, should be included. Moreover, the analysis of pharmacological ligand properties should be done on the main cellular target, the pancreatic β -cell, but also on cells involved in carcinogenic side effects. This could enable the design and development of improved therapeutics that have the ability to fine-tune receptor signaling leading to beneficial therapeutic outcomes while reducing side effect profiles. The use of allosteric ligands in addition to GLP-1R biased agonists could

also provide a therapeutic advantage to target a specific receptor response toward signaling pathways promoting insulin secretion over cell proliferation.

THE GPER

Despite the clinical success of tamoxifen in breast cancer treatment, the development of drug resistance and endometrial cancers involving the GPER leads to the requirement of alternative hormonal therapy. In this regard, the contribution of GPER-mediated responses estrogen antagonists must be considered in the future development of anti-estrogenic molecules. Recent studies based on pharmacological structure/function relationship on ER and/or GPER have identified selective GPER antagonists which completely block uterine epithelial cell proliferation mediated by GPER and which are poorly active or inactive on ER (Dennis et al., 2009, 2011; Burai et al., 2012). Future studies utilizing GPER-selective ligands will further define the role of this receptor *in vivo* and open the door to the generation of diagnostics and therapeutics directed at individual or both estrogen receptors. Such compounds might represent an important new approach for cancer therapy, thus increasing the armamentarium of drugs used to treat estrogen-sensitive and resistant cancers. On the other hand, aromatase inhibitors which act by preventing the enzyme aromatase to convert androgens into estrogen have been also brought forward as a potential alternative (Josefsson and Leinster, 2010; Abdulkareem and Zurmi, 2012).

In conclusion, GPCRs provide huge therapeutic opportunities; some are already in use. The progress in the knowledges of signaling pathways downstream of these receptors and the effects arising, their regulation by pharmacological agents, and the data from the receptor structure provide new opportunities which should lead to new generation of ligands with minimized side effects.

REFERENCES

- Abdulkareem, I. H., and Zurmi, I. B. (2012). Review of hormonal treatment of breast cancer. *Niger. J. Clin. Pract.* 15, 9–14.
- Ahren, B. (2009). Islet G protein-coupled receptors as potential targets for treatment of type 2 diabetes. *Nat. Rev. Drug Discov.* 8, 369–385.
- Albanito, L., Madeo, A., Lappano, R., Vivacqua, A., Rago, V., Carpino, A., et al. (2007). G protein-coupled receptor 30 (GPR30) mediates gene expression changes and growth response to 17 β -estradiol and selective GPR30 ligand G-1 in ovarian cancer cells. *Cancer Res.* 67, 1859–1866.
- Albanito, L., Sisci, D., Aquila, S., Brunelli, E., Vivacqua, A., Madeo, A., et al. (2008a). Epidermal growth factor induces G protein-coupled receptor 30 expression in estrogen receptor-negative breast cancer cells. *Endocrinology* 149, 3799–3808.
- Albanito, L., Lappano, R., Madeo, A., Chimento, A., Prossnitz, E. R., Cappello, A. R., et al. (2008b). G-protein-coupled receptor 30 and estrogen receptor- α are involved in the proliferative effects induced by atrazine in ovarian cancer cells. *Environ. Health Perspect.* 116, 1648–1655.
- Alexander, S. P., Mathie, A., and Peters, J. A. (2011). Guide to receptors and channels (GRAC), 5th edition. *Br. J. Pharmacol.* 164(Suppl. 1), S1–S324.
- Alonzeau, J., Alexandre, D., Jandel, L., Courel, M., Hautot, C., Yamani, F. Z., et al. (2012). The neuropeptide 26RFa is expressed in human prostate cancer and stimulates the neuroendocrine differentiation and the migration of androgen-independent prostate cancer cells. *Eur. J. Cancer.* 49, 511–519.
- Angers, S., Salahpour, A., and Bouvier, M. (2002). Dimerization: an emerging concept for G protein-coupled receptor ontogeny and function. *Annu. Rev. Pharmacol. Toxicol.* 42, 409–435.
- Anonymous. (2010). Liraglutide (Victoza) for type 2 diabetes. *Med. Lett. Drugs Ther.* 52, 25–27.
- Audet, M., and Bouvier, M. (2012). Restructuring G-protein-coupled receptor activation. *Cell* 151, 14–23.
- Baggio, L. L., and Drucker, D. J. (2007). Biology of incretins: GLP-1 and GIP. *Gastroenterology* 132, 2131–2157.
- Barron, T. I., Connolly, R., Bennett, K., Feely, J., and Kennedy, M. J. (2007). Early discontinuation of tamoxifen: a lesson for oncologists. *Cancer* 109, 832–839.
- Bergman, L., Beelen, M. L., Gallee, M. P., Hollema, H., Benraadt, J., and van Leeuwen, F. E. (2000). Risk and prognosis of endometrial cancer after tamoxifen for breast cancer. Comprehensive Cancer Centres' ALERT Group. Assessment of Liver and Endometrial cancer Risk following Tamoxifen. *Lancet* 356, 881–887.
- Bernstein, L., Deapen, D., Cerhan, J. R., Schwartz, S. M., Liff, J., McGann-Maloney, E., et al. (1999). Tamoxifen therapy for breast cancer and endometrial cancer risk. *J. Natl. Cancer Inst.* 91, 1654–1662.
- Bierkamp, C., Bonhoure, S., Mathieu, A., Clerc, P., Fourmy, D., Pradayrol, L., et al. (2004). Expression of cholecystokinin-2/gastrin receptor in the murine pancreas modulates cell adhesion and cell differentiation *in vivo*. *Am. J. Pathol.* 165, 2135–2145.
- Bisello, A., Chorev, M., Rosenblatt, M., Monticelli, L., Mierke, D. F., and Ferrari, S. L. (2002). Selective ligand-induced stabilization of active and desensitized parathyroid hormone type 1 receptor conformations. *J. Biol. Chem.* 277, 38524–38530.

- Bjerre Knudsen, L., Madsen, L. W., Andersen, S., Almholt, K., de Boer, A. S., Drucker, D. J., et al. (2010). Glucagon-like Peptide-1 receptor agonists activate rodent thyroid C-cells causing calcitonin release and C-cell proliferation. *Endocrinology* 151, 1473–1486.
- Brewster, A. M., Hortobagyi, G. N., Broglio, K. R., Kau, S. W., Santa-Maria, C. A., Arun, B., et al. (2008). Residual risk of breast cancer recurrence 5 years after adjuvant therapy. *J. Natl. Cancer Inst.* 100, 1179–1183.
- Brubaker, P. L., and Drucker, D. J. (2004). Minireview: glucagon-like peptides regulate cell proliferation and apoptosis in the pancreas, gut, and central nervous system. *Endocrinology* 145, 2653–2659.
- Bulchandani, D., Nachnani, J. S., Hershdon, B., Molteni, A., Pathan, M. H., Quinn, T., et al. (2012). Effect of exendin (exenatide)-GLP 1 receptor agonist on the thyroid and parathyroid gland in a rat model. *Eur. J. Pharmacol.* 691, 292–296.
- Burai, R., Ramesh, C., Nayak, T. K., Dennis, M. K., Bryant, B. K., Prossnitz, E. R., et al. (2012). Synthesis and characterization of tricarbonyl-Re/Tc(1) chelate probes targeting the G protein-coupled estrogen receptor GPER/GPR30. *PLoS ONE* 7:e46861. doi:10.1371/journal.pone.0046861
- Burch, M. L., Osman, N., Getachew, R., Al-Aryahi, S., Poronnik, P., Zheng, W., et al. (2012). G protein coupled receptor transactivation: extending the paradigm to include serine/threonine kinase receptors. *Int. J. Biochem. Cell Biol.* 44, 722–727.
- Buse, J. B., Rosenstock, J., Sesti, G., Schmidt, W. E., Montanya, E., Brett, J. H., et al. (2009). Liraglutide once a day versus exenatide twice a day for type 2 diabetes: a 26-week randomised, parallel-group, multinational, open-label trial (LEAD-6). *Lancet* 374, 39–47.
- Busnelli, M., Sauliere, A., Manning, M., Bouvier, M., Gales, C., and Chini, B. (2012). Functional selective oxytocin-derived agonists discriminate between individual G protein family subtypes. *J. Biol. Chem.* 287, 3617–3629.
- Buteau, J., Foisy, S., Joly, E., and Prentki, M. (2003). Glucagon-like peptide 1 induces pancreatic beta-cell proliferation via transactivation of the epidermal growth factor receptor. *Diabetes* 52, 124–132.
- Carmeci, C., Thompson, D. A., Ring, H. Z., Francke, U., and Weigel, R. J. (1997). Identification of a gene (GPR30) with homology to the G-protein-coupled receptor superfamily associated with estrogen receptor expression in breast cancer. *Genomics* 45, 607–617.
- Carroll, J. S., and Brown, M. (2006). Estrogen receptor target gene: an evolving concept. *Mol. Endocrinol.* 20, 1707–1714.
- Cayrol, C., Clerc, P., Bertrand, C., Gigoux, V., Portolan, G., Fourmy, D., et al. (2006). Cholecystokinin-2 receptor modulates cell adhesion through beta 1-integrin in human pancreatic cancer cells. *Oncogene* 25, 4421–4428.
- Cescato, R., Loesch, K. A., Waser, B., Macke, H. R., Rivier, J. E., Reubi, J. C., et al. (2010). Agonist-biased signaling at the sst2A receptor: the multi-somatostatin analogs KE108 and SOM230 activate and antagonize distinct signaling pathways. *Mol. Endocrinol.* 24, 240–249.
- Chan, Q. K., Lam, H. M., Ng, C. F., Lee, A. Y., Chan, E. S., Ng, H. K., et al. (2010). Activation of GPR30 inhibits the growth of prostate cancer cells through sustained activation of Erk1/2, c-jun/c-fos-dependent upregulation of p21, and induction of G(2) cell-cycle arrest. *Cell Death Differ.* 17, 1511–1523.
- Chang, A. M., Jakobsen, G., Sturis, J., Smith, M. J., Bloem, C. J., An, B., et al. (2003). The GLP-1 derivative NN2211 restores beta-cell sensitivity to glucose in type 2 diabetic patients after a single dose. *Diabetes* 52, 1786–1791.
- Chen, G. G., Zeng, Q., and Tse, G. M. (2008). Estrogen and its receptors in cancer. *Med. Res. Rev.* 28, 954–974.
- Cheng, S. B., Graeber, C. T., Quinn, J. A., and Filardo, E. J. (2011). Retrograde transport of the transmembrane estrogen receptor, G-protein-coupled-receptor-30 (GPR30/GPER) from the plasma membrane towards the nucleus. *Steroids* 76, 892–896.
- Chevalier, N., Bouskine, A., and Fenichel, P. (2012). Bisphenol A promotes testicular seminoma cell proliferation through GPER/GPR30. *Int. J. Cancer* 130, 241–242.
- Chia, C. W., and Egan, J. M. (2008). Incretin-based therapies in type 2 diabetes mellitus. *J. Clin. Endocrinol. Metab.* 93, 3703–3716.
- Christ, E., Wild, D., and Reubi, J. C. (2010). Glucagonlike peptide-1 receptor: an example of translational research in insulinomas: a review. *Endocrinol. Metab. Clin. North Am.* 39, 791–800.
- Chung, K. Y., Rasmussen, S. G., Liu, T., Li, S., DeVree, B. T., Chae, P. S., et al. (2011). Conformational changes in the G protein Gs induced by the beta2 adrenergic receptor. *Nature* 477, 611–615.
- Clarke, R., Skaar, T. C., Bouker, K. B., Davis, N., Lee, Y. R., Welch, J. N., et al. (2001). Molecular and pharmacological aspects of antiestrogen resistance. *J. Steroid Biochem. Mol. Biol.* 76, 71–84.
- Clerc, P., Leung-Theung-Long, S., Wang, T. C., Dockray, G. J., Bouisson, M., Delisle, M. B., et al. (2002a). Expression of CCK2 receptors in the murine pancreas: proliferation, transdifferentiation of acinar cells, and neoplasia. *Gastroenterology* 122, 428–437.
- Clerc, P., Saillan-Barreau, C., Desbois, C., Pradayrol, L., Fourmy, D., and Dufresne, M. (2002b). Transgenic mice expressing cholecystokinin 2 receptors in the pancreas. *Pharmacol. Toxicol.* 91, 321–326.
- Cochaud, S., Chevrier, L., Meunier, A. C., Brillet, T., Chadeneau, C., and Muller, J. M. (2010). The vasoactive intestinal peptide-receptor system is involved in human glioblastoma cell migration. *Neuropeptides* 44, 373–383.
- Costante, G., Meringolo, D., Durante, C., Bianchi, D., Nocera, M., Tumino, S., et al. (2007). Predictive value of serum calcitonin levels for preoperative diagnosis of medullary thyroid carcinoma in a cohort of 5817 consecutive patients with thyroid nodules. *J. Clin. Endocrinol. Metab.* 92, 450–455.
- Cure, P., Pileggi, A., and Alejandro, R. (2008). Exenatide and rare adverse events. *N. Engl. J. Med.* 358, 1969–1970; discussion 1971–1972.
- Denker, P. S., and Dimarco, P. E. (2006). Exenatide (exendin-4)-induced pancreatitis: a case report. *Diabetes Care* 29, 471.
- Dennis, M. K., Burai, R., Ramesh, C., Petrie, W. K., Alcon, S. N., Nayak, T. K., et al. (2009). In vivo effects of a GPR30 antagonist. *Nat. Chem. Biol.* 5, 421–427.
- Dennis, M. K., Field, A. S., Burai, R., Ramesh, C., Petrie, W. K., Bologna, C. G., et al. (2011). Identification of a GPER/GPR30 antagonist with improved estrogen receptor counterselectivity. *J. Steroid Biochem. Mol. Biol.* 127, 358–366.
- Deroo, B. J., and Korach, K. S. (2006). Estrogen receptors and human disease. *J. Clin. Invest.* 116, 561–570.
- Doyle, M. E., and Egan, J. M. (2007). Mechanisms of action of glucagon-like peptide 1 in the pancreas. *Pharmacol. Ther.* 113, 546–593.
- Drucker, D. J. (2003). Glucagon-like peptides: regulators of cell proliferation, differentiation, and apoptosis. *Mol. Endocrinol.* 17, 161–171.
- Drucker, D. J. (2006). The biology of incretin hormones. *Cell Metab.* 3, 153–165.
- Du, G. Q., Zhou, L., Chen, X. Y., Wan, X. P., and He, Y. Y. (2012a). The G protein-coupled receptor GPR30 mediates the proliferative and invasive effects induced by hydroxytamoxifen in endometrial cancer cells. *Biochem. Biophys. Res. Commun.* 420, 343–349.
- Du, N., Feng, J., Hu, L. J., Sun, X., Sun, H. B., Zhao, Y., et al. (2012b). Angiotensin II receptor type 1 blockers suppress the cell proliferation effects of angiotensin II in breast cancer cells by inhibiting AT1R signaling. *Oncol. Rep.* 27, 1893–1903.
- Dufresne, M., Seva, C., and Fourmy, D. (2006). Cholecystokinin and gastrin receptors. *Physiol. Rev.* 86, 805–847.
- Early Breast Cancer Trialists' Collaborative Group (EBCTCG). (2005). Effects of chemotherapy and hormonal therapy for early breast cancer on recurrence and 15-year survival: an overview of the randomised trials. *Lancet* 365, 1687–1717.
- Edwards, D. P. (2005). Regulation of signal transduction pathways by estrogen and progesterone. *Annu. Rev. Physiol.* 67, 335–376.
- Elashoff, M., Matveyenko, A. V., Gier, B., Elashoff, R., and Butler, P. C. (2011). Pancreatitis, pancreatic, and thyroid cancer with glucagon-like peptide-1-based therapies. *Gastroenterology* 141, 150–156.
- Elisei, R., Bottici, V., Luchetti, F., Di Coscio, G., Romei, C., Grasso, L., et al. (2004). Impact of routine measurement of serum calcitonin on the diagnosis and outcome of medullary thyroid cancer: experience in 10,864 patients with nodular thyroid disorders. *J. Clin. Endocrinol. Metab.* 89, 163–168.
- European Medicines Agency (EMA). (2006). *Assessment Report for Byetta*. Available at: http://www.ema.europa.eu/docs/en_GB/document_library/EPAR_-_Scientific_Discussion/human/000698/WC500051842.pdf [accessed September 27, 2011].
- European Medicines Agency (EMA). (2009). *Assessment report for Victoza*. Available at: http://www.ema.europa.eu/docs/en_GB/document_library/EPAR_-_Public_assessment_report/human/001026/WC500050016.pdf [accessed September 27, 2011].

- European Medicines Agency (EMA). (2011). *Assessment Report for By-Dureon*. Available at: http://www.ema.europa.eu/docs/en_GB/document_library/EPAR_Public_assessment_report/human/002020/WC500108239.pdf [accessed September 27, 2011].
- Feng, S., Agoulnik, I. U., Truong, A., Li, Z., Creighton, C. J., Kaftanovskaya, E. M., et al. (2010). Suppression of relaxin receptor RXFP1 decreases prostate cancer growth and metastasis. *Endocr. Relat. Cancer* 17, 1021–1033.
- Fernandez-Martinez, A. B., Bajo, A. M., Isabel Arenas, M., Sanchez-Chapado, M., Prieto, J. C., and Carmena, M. J. (2010). Vasoactive intestinal peptide (VIP) induces malignant transformation of the human prostate epithelial cell line RWPE-1. *Cancer Lett.* 299, 11–21.
- Filardo, E. J., Graeber, C. T., Quinn, J. A., Resnick, M. B., Giri, D., DeLellis, R. A., et al. (2006). Distribution of GPR30, a seven membrane-spanning estrogen receptor, in primary breast cancer and its association with clinicopathologic determinants of tumor progression. *Clin. Cancer Res.* 12, 6359–6366.
- Filardo, E. J., Quinn, J. A., Bland, K. I., and Frackelton, A. R. Jr. (2000). Estrogen-induced activation of Erk-1 and Erk-2 requires the G protein-coupled receptor homolog, GPR30, and occurs via trans-activation of the epidermal growth factor receptor through release of HB-EGF. *Mol. Endocrinol.* 14, 1649–1660.
- Franco, R., Boscia, F., Gigantino, V., Marra, L., Esposito, F., Ferrara, D., et al. (2011). GPR30 is overexpressed in post-pubertal testicular germ cell tumors. *Cancer Biol. Ther.* 11, 609–613.
- Fung, J. N., Seim, I., Wang, D., Obermair, A., Chopin, L. K., and Chen, C. (2010). Expression and in vitro functions of the ghrelin axis in endometrial cancer. *Horm. Cancer* 1, 245–255.
- Gesty-Palmer, D., Flannery, P., Yuan, L., Corsino, L., Spurney, R., Lefkowitz, R. J., et al. (2009). A beta-arrestin-biased agonist of the parathyroid hormone receptor (PTH1R) promotes bone formation independent of G protein activation. *Sci. Transl. Med.* 1, 1ra1.
- Gesty-Palmer, D., and Luttrell, L. M. (2011). “Biasing” the parathyroid hormone receptor: a novel anabolic approach to increasing bone mass? *Br. J. Pharmacol.* 164, 59–67.
- Gidekel Friedlander, S. Y., Chu, G. C., Snyder, E. L., Girnius, N., Dibelius, G., Crowley, D., et al. (2009). Context-dependent trans-formation of adult pancreatic cells by oncogenic K-Ras. *Cancer Cell* 16, 379–389.
- Gier, B., Matveyenko, A. V., Kirakossian, D., Dawson, D., Dry, S. M., and Butler, P. C. (2012a). Chronic GLP-1 receptor activation by exendin-4 induces expansion of pancreatic duct glands in rats and accelerates formation of dysplastic lesions and chronic pancreatitis in the Kras(G12D) mouse model. *Diabetes* 61, 1250–1262.
- Gier, B., Butler, P. C., Lai, C. K., Kirakossian, D., DeNicola, M. M., and Yeh, M. W. (2012b). Glucagon like peptide-1 receptor expression in the human thyroid gland. *J. Clin. Endocrinol. Metab.* 97, 121–131.
- Gigoux, V., Clerc, P., Sanchez, D., Coll, M. G., Corominola, H., Leung-Theung-Long, S., et al. (2008). Reg genes are CCK2 receptor targets in ElascCK2 mice pancreas. *Regul. Pept.* 146, 88–98.
- Giovannucci, E., Harlan, D. M., Archer, M. C., Bergenstal, R. M., Gapstur, S. M., Habel, L. A., et al. (2010). Diabetes and cancer: a consensus report. *Diabetes Care* 33, 1674–1685.
- Girman, C. J., Kou, T. D., Cai, B., Alexander, C. M., O'Neill, E. A., Williams-Herman, D. E., et al. (2010). Patients with type 2 diabetes mellitus have higher risk for acute pancreatitis compared with those without diabetes. *Diabetes Obes. Metab.* 12, 766–771.
- Goke, R., Fehmann, H. C., Linn, T., Schmidt, H., Krause, M., Eng, J., et al. (1993). Exendin-4 is a high potency agonist and truncated exendin-(9-39)-amide an antagonist at the glucagon-like peptide 1-(7-36)-amide receptor of insulin-secreting beta-cells. *J. Biol. Chem.* 268, 19650–19655.
- Goldstein, S. R. (2001). The effect of SERMs on the endometrium. *Ann. N. Y. Acad. Sci.* 949, 237–242.
- Gottardis, M. M., Robinson, S. P., Satyaswaroop, P. G., and Jordan, V. C. (1988). Contrasting actions of tamoxifen on endometrial and breast tumor growth in the athymic mouse. *Cancer Res.* 48, 812–815.
- Graf, R., Schiesser, M., Reding, T., Appenzeller, P., Sun, L. K., Fortunato, F., et al. (2006). Exocrine meets endocrine: pancreatic stone protein and regenerating protein – two sides of the same coin. *J. Surg. Res.* 133, 113–120.
- Granier, S., Kim, S., Shafer, A. M., Ratnala, V. R., Fung, J. J., Zare, R. N., et al. (2007). Structure and conformational changes in the C-terminal domain of the beta2-adrenoceptor: insights from fluorescence resonance energy transfer studies. *J. Biol. Chem.* 282, 13895–13905.
- Greer, J. B., and Whitcomb, D. C. (2009). Inflammation and pancreatic cancer: an evidence-based review. *Curr. Opin. Pharmacol.* 9, 411–418.
- Grieco, P., Franco, R., Bozzuto, G., Tocca-cieli, L., Sgambato, A., Marra, M., et al. (2011). Urotensin II receptor predicts the clinical outcome of prostate cancer patients and is involved in the regulation of motility of prostate adenocarcinoma cells. *J. Cell. Biochem.* 112, 341–353.
- Guillemet-Guibert, J., Lahlou, H., Cordelier, P., Bousquet, C., Pyronnet, S., and Susini, C. (2005). Physiology of somatostatin receptors. *J. Endocrinol. Invest.* 28, 5–9.
- Hafiz, S., Dennis, J. C., Schwartz, D., Judd, R., Tao, Y. X., Khazal, K., et al. (2012). Expression of melanocortin receptors in human prostate cancer cell lines: MC2R activation by ACTH increases prostate cancer cell proliferation. *Int. J. Oncol.* 41, 1373–1380.
- Hammes, S. R., and Levin, E. R. (2007). Extranuclear steroid receptors: nature and actions. *Endocr. Rev.* 28, 726–741.
- Harikumar, K. G., Wootten, D., Pinon, D. I., Koole, C., Ball, A. M., Furness, S. G., et al. (2012). Glucagon-like peptide-1 receptor dimerization differentially regulates agonist signaling but does not affect small molecule allostery. *Proc. Natl. Acad. Sci. U.S.A.* 109, 18607–18612.
- He, Y. Y., Cai, B., Yang, Y. X., Liu, X. L., and Wan, X. P. (2009). Estrogenic G protein-coupled receptor 30 signaling is involved in regulation of endometrial carcinoma by promoting proliferation, invasion potential, and interleukin-6 secretion via the MEK/ERK mitogen-activated protein kinase pathway. *Cancer Sci.* 100, 1051–1061.
- He, Y. Y., Du, G. Q., Cai, B., Yan, Q., Zhou, L., Chen, X. Y., et al. (2012). Estrogenic transmembrane receptor of GPR30 mediates invasion and carcinogenesis by endometrial cancer cell line RL95-2. *J. Cancer Res. Clin. Oncol.* 138, 775–783.
- Hegedus, L., Moses, A. C., Zdravkovic, M., Le Thi, T., and Daniels, G. H. (2011). GLP-1 and calcitonin concentration in humans: lack of evidence of calcitonin release from sequential screening in over 5000 subjects with type 2 diabetes or nondiabetic obese subjects treated with the human GLP-1 analog, liraglutide. *J. Clin. Endocrinol. Metab.* 96, 853–860.
- Henic, E., Noskova, V., Hoyer-Hansen, G., Hansson, S., and Casslen, B. (2009). Estradiol attenuates EGF-induced rapid uPAR mobilization and cell migration via the G-protein-coupled receptor 30 in ovarian cancer cells. *Int. J. Gynecol. Cancer* 19, 214–222.
- Hernandez-Munoz, I., Skoudy, A., Real, F. X., and Navarro, P. (2008). Pancreatic ductal adenocarcinoma: cellular origin, signaling pathways and stroma contribution. *Pancreatol.* 8, 462–469.
- Hodsman, A. B., Bauer, D. C., Dempster, D. W., Dian, L., Hanley, D. A., Harris, S. T., et al. (2005). Parathyroid hormone and teriparatide for the treatment of osteoporosis: a review of the evidence and suggested guidelines for its use. *Endocr. Rev.* 26, 688–703.
- Holst, J. J. (2007). The physiology of glucagon-like peptide 1. *Physiol. Rev.* 87, 1409–1439.
- Holst, J. J., Gromada, J., and Nauck, M. A. (1997). The pathogenesis of NIDDM involves a defective expression of the GIP receptor. *Diabetologia* 40, 984–986.
- Holz, G. G. (2004). Epac: a new cAMP-binding protein in support of glucagon-like peptide-1 receptor-mediated signal transduction in the pancreatic beta-cell. *Diabetes* 53, 5–13.
- Hopkins, A. L., and Groom, C. R. (2002). The druggable genome. *Nat. Rev. Drug Discov.* 1, 727–730.
- Horsch, D., Goke, R., Eissele, R., Michel, B., and Goke, B. (1997). Reciprocal cellular distribution of glucagon-like peptide-1 (GLP-1) immunoreactivity and GLP-1 receptor mRNA in pancreatic islets of rat. *Pancreas* 14, 290–294.
- Ignatov, A., Ignatov, T., Weissenborn, C., Eggemann, H., Bischoff, J., Semczuk, A., et al. (2011). G-protein-coupled estrogen receptor GPR30 and tamoxifen resistance in breast cancer. *Breast Cancer Res. Treat.* 128, 457–466.
- Ignatov, T., Eggemann, H., Semczuk, A., Smith, B., Bischoff, J., Roessner, A., et al. (2010a). Role of GPR30 in endometrial pathology after tamoxifen for breast cancer. *Am. J. Obstet. Gynecol.* 203, e9–e16.
- Ignatov, A., Ignatov, T., Roessner, A., Costa, S. D., and Kalinski, T. (2010b). Role of GPR30 in the mechanisms of tamoxifen resistance in breast cancer MCF-7 cells. *Breast Cancer Res. Treat.* 123, 87–96.

- Jamil, A., Croxtall, J. D., and White, J. O. (1991). The effect of anti-oestrogens on cell growth and progesterone receptor concentration in human endometrial cancer cells (Ishikawa). *J. Mol. Endocrinol.* 6, 215–221.
- Jeffery, P. L., Herington, A. C., and Chopin, L. K. (2002). Expression and action of the growth hormone releasing peptide ghrelin and its receptor in prostate cancer cell lines. *J. Endocrinol.* 172, R7–R11.
- Jeffery, P. L., Murray, R. E., Yeh, A. H., McNamara, J. F., Duncan, R. P., Francis, G. D., et al. (2005). Expression and function of the ghrelin axis, including a novel preproghrelin isoform, in human breast cancer tissues and cell lines. *Endocr. Relat. Cancer* 12, 839–850.
- Jordan, B. A., and Devi, L. A. (1999). G-protein-coupled receptor heterodimerization modulates receptor function. *Nature* 399, 697–700.
- Jordan, V. C. (2007). SERMs: meeting the promise of multifunctional medicines. *J. Natl. Cancer Inst.* 99, 350–356.
- Jordan, V. C., and Morrow, M. (1999). Tamoxifen, raloxifene, and the prevention of breast cancer. *Endocr. Rev.* 20, 253–278.
- Jorgensen, R., Kubale, V., Vrecl, M., Schwartz, T. W., and Elling, C. E. (2007). Oxyntomodulin differentially affects glucagon-like peptide-1 receptor beta-arrestin recruitment and signaling through Galpha(s). *J. Pharmacol. Exp. Ther.* 322, 148–154.
- Josefsson, M. L., and Leinster, S. J. (2010). Aromatase inhibitors versus tamoxifen as adjuvant hormonal therapy for oestrogen sensitive early breast cancer in postmenopausal women: meta-analyses of monotherapy, sequenced therapy and extended therapy. *Breast* 19, 76–83.
- Jura, N., Archer, H., and Bar-Sagi, D. (2005). Chronic pancreatitis, pancreatic adenocarcinoma and the black box in-between. *Cell Res.* 15, 72–77.
- Kahsai, A. W., Xiao, K., Rajagopal, S., Ahn, S., Shukla, A. K., Sun, J., et al. (2011). Multiple ligand-specific conformations of the beta2-adrenergic receptor. *Nat. Chem. Biol.* 7, 692–700.
- Kashima, Y., Miki, T., Shibasaki, T., Ozaki, N., Miyazaki, M., Yano, H., et al. (2001). Critical role of cAMP-GEFII – Rim2 complex in incretin-potentiated insulin secretion. *J. Biol. Chem.* 276, 46046–46053.
- Ketterer, K., Kong, B., Frank, D., Giese, N. A., Bauer, A., Hoheisel, J., et al. (2009). Neuromedin U is over-expressed in pancreatic cancer and increases invasiveness via the hepatocyte growth factor c-Met pathway. *Cancer Lett.* 277, 72–81.
- Kim, I. M., Tilley, D. G., Chen, J., Salazar, N. C., Whalen, E. J., Violin, J. D., et al. (2008). Beta-blockers alprenolol and carvedilol stimulate beta-arrestin-mediated EGFR trans-activation. *Proc. Natl. Acad. Sci. U.S.A.* 105, 14555–14560.
- Kintzel, P. E., Chase, S. L., Schultz, L. M., and O'Rourke, T. J. (2008). Increased risk of metabolic syndrome, diabetes mellitus, and cardiovascular disease in men receiving androgen deprivation therapy for prostate cancer. *Pharmacotherapy* 28, 1511–1522.
- Kleuser, B., Malek, D., Gust, R., Pertz, H. H., and Potteck, H. (2008). 17-Beta-estradiol inhibits transforming growth factor-beta signaling and function in breast cancer cells via activation of extracellular signal-regulated kinase through the G protein-coupled receptor 30. *Mol. Pharmacol.* 74, 1533–1543.
- Koehler, J. A., Baggio, L. L., Lamont, B. J., Ali, S., and Drucker, D. J. (2009). Glucagon-like peptide-1 receptor activation modulates pancreatitis-associated gene expression but does not modify the susceptibility to experimental pancreatitis in mice. *Diabetes* 58, 2148–2161.
- Koehler, J. A., and Drucker, D. J. (2006). Activation of glucagon-like peptide-1 receptor signaling does not modify the growth or apoptosis of human pancreatic cancer cells. *Diabetes* 55, 1369–1379.
- Korner, M., Stockli, M., Waser, B., and Reubi, J. C. (2007). GLP-1 receptor expression in human tumors and human normal tissues: potential for in vivo targeting. *J. Nucl. Med.* 48, 736–743.
- Lando, H. M., Alattar, M., and Dua, A. P. (2012). Elevated amylase and lipase levels in patients using glucagon-like peptide-1 receptor agonists or dipeptidyl-peptidase-4 inhibitors in the outpatient setting. *Endocr. Pract.* 18, 472–477.
- Lappano, R., Rosano, C., Santolla, M. F., Pupo, M., De Francesco, E. M., De Marco, P., et al. (2012). Two novel GPER agonists induce gene expression changes and growth effects in cancer cells. *Curr. Cancer Drug Targets* 12, 531–542.
- Leblanc, K., Sexton, E., Parent, S., Belanger, G., Dery, M. C., Boucher, V., et al. (2007). Effects of 4-hydroxytamoxifen, raloxifene and ICI 162 780 on survival of uterine cancer cell lines in the presence and absence of exogenous estrogens. *Int. J. Oncol.* 30, 477–487.
- Lebon, G., Warne, T., Edwards, P. C., Bennett, K., Langmead, C. J., Leslie, A. G., et al. (2011). Agonist-bound adenosine A2A receptor structures reveal common features of GPCR activation. *Nature* 474, 521–525.
- Lee, D. K., Ferguson, S. S., George, S. R., and O'Dowd, B. F. (2010). The fate of the internalized apelin receptor is determined by different isoforms of apelin mediating differential interaction with beta-arrestin. *Biochem. Biophys. Res. Commun.* 395, 185–189.
- Liu, J. J., Horst, R., Katritch, V., Stevens, R. C., and Wuthrich, K. (2012). Biased signaling pathways in beta2-adrenergic receptor characterized by 19F-NMR. *Science* 335, 1106–1110.
- LiVolsi, V. A. (1997). C cell hyperplasia/neoplasia. *J. Clin. Endocrinol. Metab.* 82, 39–41.
- Logsdon, C. D., and Ji, B. (2009). Ras activity in acinar cells links chronic pancreatitis and pancreatic cancer. *Clin. Gastroenterol. Hepatol.* 7, S40–S43.
- Lorand, T., Vigh, E., and Garai, J. (2010). Hormonal action of plant derived and anthropogenic non-steroidal estrogenic compounds: phytoestrogens and xenoestrogens. *Curr. Med. Chem.* 17, 3542–3574.
- Lu, C., Everhart, L., Tilan, J., Kuo, L., Sun, C. C., Munivenkatappa, R. B., et al. (2010). Neuropeptide Y and its Y2 receptor: potential targets in neuroblastoma therapy. *Oncogene* 29, 5630–5642.
- Luttrell, L. M., and Gesty-Palmer, D. (2010). Beyond desensitization: physiological relevance of arrestin-dependent signaling. *Pharmacol. Rev.* 62, 305–330.
- MacDonald, P. E., Wang, X., Xia, F., El-kholy, W., Targonsky, E. D., Tsushima, R. G., et al. (2003). Antagonism of rat beta-cell voltage-dependent K⁺ currents by exendin 4 requires dual activation of the cAMP/protein kinase A and phosphatidylinositol 3-kinase signaling pathways. *J. Biol. Chem.* 278, 52446–52453.
- Machens, A., Hoffmann, E., Sekulla, C., and Dralle, H. (2009). Importance of gender-specific calcitonin thresholds in screening for occult sporadic medullary thyroid cancer. *Endocr. Relat. Cancer* 16, 1291–1298.
- Madsbad, S. (2009). Treatment of type 2 diabetes with incretin-based therapies. *Lancet* 373, 438–439.
- Madsen, L. W., Knauf, J. A., Gotfredsen, C., Pilling, A., Sjogren, I., Andersen, S., et al. (2012). GLP-1 receptor agonists and the thyroid: C-cell effects in mice are mediated via the GLP-1 receptor and not associated with RET activation. *Endocrinology* 153, 1538–1547.
- Mathieu, A., Clerc, P., Portolan, G., Bierkamp, C., Lulka, H., Pradayrol, L., et al. (2005). Transgenic expression of CCK2 receptors sensitizes murine pancreatic acinar cells to carcinogen-induced preneoplastic lesions formation. *Int. J. Cancer* 115, 46–54.
- Matusiak, D., Glover, S., Nathaniel, R., Matkowskyj, K., Yang, J., and Benya, R. V. (2005). Neuromedin B and its receptor are mitogens in both normal and malignant epithelial cells lining the colon. *Am. J. Physiol. Gastrointest. Liver Physiol.* 288, G718–G728.
- Mayo, K. E., Miller, L. J., Bataille, D., Dalle, S., Goke, B., Thorens, B., et al. (2003). International union of pharmacology. XXXV. The glucagon receptor family. *Pharmacol. Rev.* 55, 167–194.
- McDonnell, D. P. (1999). The molecular pharmacology of SERMs. *Trends Endocrinol. Metab.* 10, 301–311.
- Means, A. L., Meszoely, I. M., Suzuki, K., Miyamoto, Y., Rustgi, A. K., Coffey, R. J., et al. (2005). Pancreatic epithelial plasticity mediated by acinar cell transdifferentiation and generation of nestin-positive intermediates. *Development* 132, 3767–3776.
- Medeiros, P. J., Al-Khazraji, B. K., Novielli, N. M., Postovit, L. M., Chambers, A. F., and Jackson, D. N. (2012). Neuropeptide Y stimulates proliferation and migration in the 4T1 breast cancer cell line. *Int. J. Cancer* 131, 276–286.
- Medved, V., Jovanovic, N., and Knapić, V. P. (2009). The comorbidity of diabetes mellitus and psychiatric disorders. *Psychiatr. Danub.* 21, 585–588.
- Meyer, M. R., and Barton, M. (2009). ERalpha, ERbeta, and gPER: novel aspects of oestrogen receptor signalling in atherosclerosis. *Cardiovasc. Res.* 83, 605–610.
- Meyer, M. R., Haas, E., Prossnitz, E. R., and Barton, M. (2009). Non-genomic regulation of vascular cell function and growth by estrogen. *Mol. Cell. Endocrinol.* 308, 9–16.
- Mojsov, S., Weir, G. C., and Habener, J. F. (1987). Insulinotropin: glucagon-like peptide I (7-37) co-encoded in the glucagon gene is a potent stimulator of insulin release in the perfused rat pancreas. *J. Clin. Invest.* 79, 616–619.

- Monnier, J., and Samson, M. (2010). Prokineticins in angiogenesis and cancer. *Cancer Lett.* 296, 144–149.
- Moody, T. W., Osefo, N., Nuche-Berenguer, B., Riddnour, L., Wink, D., and Jensen, R. T. (2012). Pituitary adenylate cyclase-activating polypeptide causes tyrosine phosphorylation of the epidermal growth factor receptor in lung cancer cells. *J. Pharmacol. Exp. Ther.* 341, 873–881.
- Moody, T. W., Walters, J., Casibang, M., Zia, F., and Gozes, Y. (2000). VPAC1 receptors and lung cancer. *Ann. N. Y. Acad. Sci.* 921, 26–32.
- Muller, K. M., Tveteraas, I. H., Aasrum, M., Odegard, J., Dawood, M., Dajani, O., et al. (2011). Role of protein kinase C and epidermal growth factor receptor signalling in growth stimulation by neurotensin in colon carcinoma cells. *BMC Cancer* 11:421. doi:10.1186/1471-2407-11-421
- Nachnani, J. S., Bulchandani, D. G., Nookala, A., Herndon, B., Molteni, A., Pandya, P., et al. (2010). Biochemical and histological effects of exendin-4 (exenatide) on the rat pancreas. *Diabetologia* 53, 153–159.
- Nagel, J. M., Geiger, B. M., Karagiannis, A. K., Gras-Miralles, B., Horst, D., Najarian, R. M., et al. (2012). Reduced intestinal tumorigenesis in APCmin mice lacking melanin-concentrating hormone. *PLoS ONE* 7:e41914. doi:10.1371/journal.pone.0041914
- Nasrallah, H. A. (2008). Atypical antipsychotic-induced metabolic side effects: insights from receptor-binding profiles. *Mol. Psychiatry* 13, 27–35.
- Nauck, M. A., Heimesaat, M. M., Orskov, C., Holst, J. J., Ebert, R., and Creutzfeldt, W. (1993). Preserved incretin activity of glucagon-like peptide 1 [7-36 amide] but not of synthetic human gastric inhibitory polypeptide in patients with type-2 diabetes mellitus. *J. Clin. Invest.* 91, 301–307.
- Nauck, M. A., Vilsboll, T., Gallwitz, B., Garber, A., and Madsbad, S. (2009). Incretin-based therapies: viewpoints on the way to consensus. *Diabetes Care* 32(Suppl. 2), S223–S231.
- Nyborg, N. C., Molck, A. M., Madsen, L. W., and Knudsen, L. B. (2012). The human GLP-1 analog liraglutide and the pancreas: evidence for the absence of structural pancreatic changes in three species. *Diabetes* 61, 1243–1249.
- Orlando, L., Schiavone, P., Fedele, P., Calvani, N., Nacci, A., Rizzo, P., et al. (2010). Molecularly targeted endocrine therapies for breast cancer. *Cancer Treat. Rev.* 36(Suppl. 3), S67–S71.
- Otto, C., Rohde-Schulz, B., Schwarz, G., Fuchs, I., Klewer, M., Brittain, D., et al. (2008). G protein-coupled receptor 30 localizes to the endoplasmic reticulum and is not activated by estradiol. *Endocrinology* 149, 4846–4856.
- Pandey, A., Forte, V., Abdallah, M., Alickaj, A., Mahmud, S., Asad, S., et al. (2011). Diabetes mellitus and the risk of cancer. *Minerva Endocrinol.* 36, 187–209.
- Pandey, D. P., Lappano, R., Albanito, L., Madeo, A., Maggiolini, M., and Picard, D. (2009). Estrogenic GPR30 signalling induces proliferation and migration of breast cancer cells through CTGF. *EMBO J.* 28, 523–532.
- Park, H. J., Kim, S. R., Kim, M. K., Choi, K. S., Jang, H. O., Yun, L., et al. (2011). Neuromedin B receptor antagonist suppresses tumor angiogenesis and tumor growth in vitro and in vivo. *Cancer Lett.* 312, 117–127.
- Park, S., Dong, X., Fisher, T. L., Dunn, S., Omer, A. K., Weir, G., et al. (2006). Exendin-4 uses Irs2 signaling to mediate pancreatic beta cell growth and function. *J. Biol. Chem.* 281, 1159–1168.
- Pedram, A., Razandi, M., and Levin, E. R. (2006). Nature of functional estrogen receptors at the plasma membrane. *Mol. Endocrinol.* 20, 1996–2009.
- Perez-Mancera, P. A., Guerra, C., Barbacid, M., and Tuveson, D. A. (2012). What we have learned about pancreatic cancer from mouse models. *Gastroenterology* 142, 1079–1092.
- Phillips, L. K., and Prins, J. B. (2011). Update on incretin hormones. *Ann. N. Y. Acad. Sci.* 1243, E55–E74.
- Pike, M. C., Pearce, C. L., and Wu, A. H. (2004). Prevention of cancers of the breast, endometrium and ovary. *Oncogene* 23, 6379–6391.
- Piteau, S., Olver, A., Kim, S. J., Winter, K., Pospisilik, J. A., Lynn, F., et al. (2007). Reversal of islet GIP receptor down-regulation and resistance to GIP by reducing hyperglycemia in the Zucker rat. *Biochem. Biophys. Res. Commun.* 362, 1007–1012.
- Powles, T. J., Ashley, S., Tidy, A., Smith, I. E., and Dowsett, M. (2007). Twenty-year follow-up of the Royal Marsden randomized, double-blinded tamoxifen breast cancer prevention trial. *J. Natl. Cancer Inst.* 99, 283–290.
- Pratley, R. E., and Gilbert, M. (2008). Targeting incretins in Type 2 diabetes: role of GLP-1 receptor agonists and DPP-4 inhibitors. *Rev. Diabet. Stud.* 5, 73–94.
- Prossnitz, E. R., Arterburn, J. B., Smith, H. O., Oprea, T. I., Sklar, L. A., and Hathaway, H. J. (2008a). Estrogen signaling through the transmembrane G protein-coupled receptor GPR30. *Annu. Rev. Physiol.* 70, 165–190.
- Prossnitz, E. R., Oprea, T. I., Sklar, L. A., and Arterburn, J. B. (2008b). The ins and outs of GPR30: a transmembrane estrogen receptor. *J. Steroid Biochem. Mol. Biol.* 109, 350–353.
- Quoyer, J., Longuet, C., Broca, C., Linck, N., Costes, S., Varin, E., et al. (2010). GLP-1 mediates antiapoptotic effect by phosphorylating Bad through a beta-arrestin 1-mediated ERK1/2 activation in pancreatic beta-cells. *J. Biol. Chem.* 285, 1989–2002.
- Rafei, M., Berchiche, Y. A., Birman, E., Boivin, M. N., Young, Y. K., Wu, J. H., et al. (2009). An engineered GM-CSF-CCL2 fusokine is a potent inhibitor of CCR2-driven inflammation as demonstrated in a murine model of inflammatory arthritis. *J. Immunol.* 183, 1759–1766.
- Rahmeh, R., Damian, M., Cottet, M., Orcel, H., Mendre, C., Durroux, T., et al. (2012). Structural insights into biased G protein-coupled receptor signaling revealed by fluorescence spectroscopy. *Proc. Natl. Acad. Sci. U.S.A.* 109, 6733–6738.
- Rajagopal, S., Rajagopal, K., and Lefkowitz, R. J. (2010a). Teaching old receptors new tricks: biasing seven-transmembrane receptors. *Nat. Rev. Drug Discov.* 9, 373–386.
- Rajagopal, S., Kim, J., Ahn, S., Craig, S., Lam, C. M., Gerard, N. P., et al. (2010b). Beta-arrestin- but not G protein-mediated signaling by the “decoy” receptor CXCR7. *Proc. Natl. Acad. Sci. U.S.A.* 107, 628–632.
- Rebours, V., Boutron-Ruault, M. C., Schnee, M., Ferec, C., Le Marechal, C., Hentic, O., et al. (2009). The natural history of hereditary pancreatitis: a national series. *Gut* 58, 97–103.
- Revankar, C. M., Cimino, D. F., Sklar, L. A., Arterburn, J. B., and Prossnitz, E. R. (2005). A transmembrane intracellular estrogen receptor mediates rapid cell signaling. *Science* 307, 1625–1630.
- Reversi, A., Rimoldi, V., Marrocco, T., Cassoni, P., Bussolati, G., Parenti, M., et al. (2005). The oxytocin receptor antagonist atosiban inhibits cell growth via a “biased agonist” mechanism. *J. Biol. Chem.* 280, 16311–16318.
- Ring, A., and Dowsett, M. (2004). Mechanisms of tamoxifen resistance. *Endocr. Relat. Cancer* 11, 643–658.
- Rocheville, M., Lange, D. C., Kumar, U., Sasi, R., Patel, R. C., and Patel, Y. C. (2000). Subtypes of the somatostatin receptor assemble as functional homo- and heterodimers. *J. Biol. Chem.* 275, 7862–7869.
- Rodrigues-Ferreira, S., Abdelkarim, M., Dillenburg-Pilla, P., Luissint, A. C., di-Tommaso, A., Deshayes, F., et al. (2012). Angiotensin II facilitates breast cancer cell migration and metastasis. *PLoS ONE* 7:e35667. doi:10.1371/journal.pone.0035667
- Rodriguez-Frade, J. M., Vila-Coro, A. J., de Ana, A. M., Albar, J. P., Martinez, A. C., and Mellado, M. (1999). The chemokine monocyte chemoattractant protein-1 induces functional responses through dimerization of its receptor CCR2. *Proc. Natl. Acad. Sci. U.S.A.* 96, 3628–3633.
- Ruscica, M., Dozio, E., Boghossian, S., Bovo, G., Martos Riano, V., Motta, M., et al. (2006). Activation of the Y1 receptor by neuropeptide Y regulates the growth of prostate cancer cells. *Endocrinology* 147, 1466–1473.
- Sanden, C., Broselid, S., Cornmark, L., Andersson, K., Daszkiewicz-Nilsson, J., Martensson, U. E., et al. (2011). G protein-coupled estrogen receptor 1/G protein-coupled receptor 30 localizes in the plasma membrane and traffics intracellularly on cytoskeleton intermediate filaments. *Mol. Pharmacol.* 79, 400–410.
- Saphner, T., Tormey, D. C., and Gray, R. (1996). Annual hazard rates of recurrence for breast cancer after primary therapy. *J. Clin. Oncol.* 14, 2738–2746.
- Saylor, P. J., and Smith, M. R. (2009). Metabolic complications of androgen deprivation therapy for prostate cancer. *J. Urol.* 181, 1998–2006. doi:10.1093/ajph/99.10.1998
- Schwartz, L. B., Krey, L., Demopoulos, R., Goldstein, S. R., Nachtigall, L. E., and Mittal, K. (1997). Alterations in steroid hormone receptors in the tamoxifen-treated endometrium. *Am. J. Obstet. Gynecol.* 176, 129–137.
- Seino, S., and Shibasaki, T. (2005). PKA-dependent and PKA-independent pathways for cAMP-regulated exocytosis. *Physiol. Rev.* 85, 1303–1342.
- Sengupta, S., Peterson, T. R., and Sabatini, D. M. (2010). Regulation of the mTOR complex 1 pathway by nutrients, growth factors, and stress. *Mol. Cell* 40, 310–322.

- Sensken, S. C., Staubert, C., Keul, P., Levkau, B., Schoneberg, T., and Graler, M. H. (2008). Selective activation of G alpha i mediated signalling of S1P3 by FTY720-phosphate. *Cell. Signal.* 20, 1125–1133.
- Sheriff, S., Ali, M., Yahya, A., Haider, K. H., Balasubramaniam, A., and Amlal, H. (2010). Neuropeptide Y Y5 receptor promotes cell growth through extracellular signal-regulated kinase signaling and cyclic AMP inhibition in a human breast cancer cell line. *Mol. Cancer Res.* 8, 604–614.
- Siegfried, J. M., Hershberger, P. A., and Stabile, L. P. (2009). Estrogen receptor signaling in lung cancer. *Semin. Oncol.* 36, 524–531.
- Smith, H. O., Leslie, K. K., Singh, M., Qualls, C. R., Revankar, C. M., Joste, N. E., et al. (2007). GPR30: a novel indicator of poor survival for endometrial carcinoma. *Am. J. Obstet. Gynecol.* 196, 386.e1–386.e9. discussion 386.e9–386.e11.
- Subbiah, V., Madsen, V. S., Raymond, A. K., Benjamin, R. S., and Ludwig, J. A. (2010). Of mice and men: divergent risks of teriparatide-induced osteosarcoma. *Osteoporos. Int.* 21, 1041–1045.
- Suzuki, K., Nakabayashi, K., Yamada, A. Y., Lodhi, R. S., Hazama, R., Ebina, Y., et al. (2012). Recombinant H2 relaxin inhibits apoptosis and induces cell proliferation in cultured leiomyoma cells without affecting those in cultured normal myometrial cells. *Fertil. Steril.* 97, 734–741.
- Tack, J., Camilleri, M., Chang, L., Chey, W. D., Galligan, J. J., Lacy, B. E., et al. (2012). Systematic review: cardiovascular safety profile of 5-HT(4) agonists developed for gastrointestinal disorders. *Aliment. Pharmacol. Ther.* 35, 745–767.
- Tatarkiewicz, K., Smith, P. A., Sablan, E. J., Polizzi, C. J., Aumann, D. E., Villescaz, C., et al. (2010). Exenatide does not evoke pancreatitis and attenuates chemically induced pancreatitis in normal and diabetic rodents. *Am. J. Physiol. Endocrinol. Metab.* 299, E1076–E1086.
- Thomas, P., and Dong, J. (2006). Binding and activation of the seven-transmembrane estrogen receptor GPR30 by environmental estrogens: a potential novel mechanism of endocrine disruption. *J. Steroid Biochem. Mol. Biol.* 102, 175–179.
- Thomas, P., Pang, Y., Filardo, E. J., and Dong, J. (2005). Identity of an estrogen membrane receptor coupled to a G protein in human breast cancer cells. *Endocrinology* 146, 624–632.
- Thorens, B. (1992). Expression cloning of the pancreatic beta cell receptor for the gluco-incretin hormone glucagon-like peptide 1. *Proc. Natl. Acad. Sci. U.S.A.* 89, 8641–8645.
- Tian, P. Y., and Fan, X. M. (2012). The proliferative effects of ghrelin on human gastric cancer AGS cells. *J. Dig. Dis.* 13, 453–458.
- Tornehave, D., Kristensen, P., Romer, J., Knudsen, L. B., and Heller, R. S. (2008). Expression of the GLP-1 receptor in mouse, rat, and human pancreas. *J. Histochem. Cytochem.* 56, 841–851.
- Tripathy, N. R., Basha, S., Jain, R., Shetty, S., and Ramachandran, A. (2008). Exenatide and acute pancreatitis. *J. Assoc. Physicians India* 56, 987–988.
- Trumper, J., Ross, D., Jahr, H., Brendel, M. D., Goke, R., and Horsch, D. (2005). The Rap-B-Raf signalling pathway is activated by glucose and glucagon-like peptide-1 in human islet cells. *Diabetologia* 48, 1534–1540.
- U.S. Food and Drug Administration. (2011). *Victoza (Liraglutide [rDNA Origin]) Injection: REMS-Risk of Thyroid C-Cell Tumors, Acute Pancreatitis*. Available at: <http://www.fda.gov/Safety/MedWatch/SafetyInformation/SafetyAlertsforHumanMedicalProducts/ucm258826.htm> [accessed April 30, 2012].
- Vaidehi, N., and Kenakin, T. (2010). The role of conformational ensembles of seven transmembrane receptors in functional selectivity. *Curr. Opin. Pharmacol.* 10, 775–781.
- Valdehita, A., Carmena, M. J., Bajo, A. M., and Prieto, J. C. (2012). RNA interference-directed silencing of VPAC1 receptor inhibits VIP effects on both EGFR and HER2 transactivation and VEGF secretion in human breast cancer cells. *Mol. Cell. Endocrinol.* 348, 241–246.
- van Leeuwen, F. E., Benraad, J., Coebergh, J. W., Kiemeny, L. A., Gimbre, C. H., Otter, R., et al. (1994). Risk of endometrial cancer after tamoxifen treatment of breast cancer. *Lancet* 343, 448–452.
- Victoza (Liraglutide) Injection. (2012). *Novo Nordisk*. Available at: <http://www.novopi.com/victoza.pdf> [accessed April 30, 2012].
- Vila-Coro, A. J., Mellado, M., Martín de Ana, A., Lucas, P., del Real, G., Martínez, A. C., et al. (2000). HIV-1 infection through the CCR5 receptor is blocked by receptor dimerization. *Proc. Natl. Acad. Sci. U.S.A.* 97, 3388–3393.
- Viltsboll, T. (2009). The effects of glucagon-like peptide-1 on the beta cell. *Diabetes Obes. Metab.* 11(Suppl. 3), 11–18.
- Viltsboll, T., Brock, B., Perrild, H., Levin, K., Lervang, H. H., Kolendorf, K., et al. (2008). Liraglutide, a once-daily human GLP-1 analogue, improves pancreatic B-cell function and arginine-stimulated insulin secretion during hyperglycaemia in patients with Type 2 diabetes mellitus. *Diabet. Med.* 25, 152–156.
- Viltsboll, T., Krarup, T., Madsbad, S., and Holst, J. J. (2002). Defective amplification of the late phase insulin response to glucose by GIP in obese Type II diabetic patients. *Diabetologia* 45, 1111–1119.
- Viltsboll, T., Zdravkovic, M., Le-Thi, T., Krarup, T., Schmitz, O., Courreges, J. P., et al. (2007). Liraglutide, a long-acting human glucagon-like peptide-1 analog, given as monotherapy significantly improves glycemic control and lowers body weight without risk of hypoglycemia in patients with type 2 diabetes. *Diabetes Care* 30, 1608–1610.
- Vivacqua, A., Bonfigliolo, D., Recchia, A. G., Musti, A. M., Picard, D., Ando, S., et al. (2006a). The G protein-coupled receptor GPR30 mediates the proliferative effects induced by 17beta-estradiol and hydroxytamoxifen in endometrial cancer cells. *Mol. Endocrinol.* 20, 631–646.
- Vivacqua, A., Bonfigliolo, D., Albanito, L., Madeo, A., Rago, V., Carpino, A., et al. (2006b). 17beta-estradiol, genistein, and 4-hydroxytamoxifen induce the proliferation of thyroid cancer cells through the G protein-coupled receptor GPR30. *Mol. Pharmacol.* 70, 1414–1423.
- Wang, C. I., and Lewis, R. J. (2013). Emerging opportunities for allosteric modulation of G-protein coupled receptors. *Biochem. Pharmacol.* 85, 153–162.
- Wang, D., Hu, L., Zhang, G., Zhang, L., and Chen, C. (2010). G protein-coupled receptor 30 in tumor development. *Endocrine* 38, 29–37.
- Warne, T., Moukhametianov, R., Baker, J. G., Nehme, R., Edwards, P. C., Leslie, A. G., et al. (2011). The structural basis for agonist and partial agonist action on a beta(1)-adrenergic receptor. *Nature* 469, 241–244.
- Waser, B., Beetschen, K., Pellegata, N. S., and Reubi, J. C. (2011). Incretin receptors in non-neoplastic and neoplastic thyroid C cells in rodents and humans: relevance for incretin-based diabetes therapy. *Neuroendocrinology* 94, 291–301.
- Waser, B., Rehm, R., Sanchez, C., Fourmy, D., and Reubi, J. C. (2012). Glucose-dependent insulinotropic polypeptide receptors in most gastroenteropancreatic and bronchial neuroendocrine tumors. *J. Clin. Endocrinol. Metab.* 97, 482–488.
- Wehbi, V., Decourtye, J., Piketty, V., Durand, G., Reiter, E., and Maurel, M. C. (2010). Selective modulation of follicle-stimulating hormone signaling pathways with enhancing equine chorionic gonadotropin/antibody immune complexes. *Endocrinology* 151, 2788–2799.
- Whelting, M. (1997). Specific, nongenomic actions of steroid hormones. *Annu. Rev. Physiol.* 59, 365–393.
- Wei, H., Ahn, S., Shenoy, S. K., Karnik, S. S., Hunyady, L., Luttrell, L. M., et al. (2003). Independent beta-arrestin 2 and G protein-mediated pathways for angiotensin II activation of extracellular signal-regulated kinases 1 and 2. *Proc. Natl. Acad. Sci. U.S.A.* 100, 10782–10787.
- Wei, Y., Zhang, Z., Liao, H., Wu, L., Wu, X., Zhou, D., et al. (2012). Nuclear estrogen receptor-mediated Notch signaling and GPR30-mediated PI3K/AKT signaling in the regulation of endometrial cancer cell proliferation. *Oncol. Rep.* 27, 504–510.
- Whalen, E. J., Rajagopal, S., and Lefkowitz, R. J. (2011). Therapeutic potential of beta-arrestin- and G protein-biased agonists. *Trends Mol. Med.* 17, 126–139.
- Wickerham, D. L., Fisher, B., Wolmark, N., Bryant, J., Costantino, J., Bernstein, L., et al. (2002). Association of tamoxifen and uterine sarcoma. *J. Clin. Oncol.* 20, 2758–2760.
- Willard, F. S., Wooten, D., Showalter, A. D., Savage, E. E., Ficorilli, J., Farb, T. B., et al. (2012). Small molecule allosteric modulation of the glucagon-like Peptide-1 receptor enhances the insulinotropic effect of oxyntomodulin. *Mol. Pharmacol.* 82, 1066–1073.
- Wisler, J. W., DeWire, S. M., Whalen, E. J., Violin, J. D., Drake, M. T., Ahn, S., et al. (2007). A unique mechanism of beta-blocker action: carvedilol stimulates beta-arrestin signaling. *Proc. Natl. Acad. Sci. U.S.A.* 104, 16657–16662.
- Wooten, D., Savage, E. E., Willard, F. S., Bueno, A. B., Sloop, K. W.,

- Christopoulos, A., et al. (2013). Differential activation and modulation of the glucagon-like peptide-1 receptor by small molecule ligands. *Mol. Pharmacol.* 83, 822–834.
- Wu, Y. Q., Song, Z., Zhou, C. H., Xing, S. H., Pei, D. S., and Zheng, J. N. (2010). Expression of urotensin II and its receptor in human lung adenocarcinoma A549 cells and the effect of urotensin II on lung adenocarcinoma growth in vitro and in vivo. *Oncol. Rep.* 24, 1179–1184.
- Xu, F., Wu, H., Katritch, V., Han, G. W., Jacobson, K. A., Gao, Z. G., et al. (2011). Structure of an agonist-bound human A2A adenosine receptor. *Science* 332, 322–327.
- Xu, G., Stoffers, D. A., Habener, J. F., and Bonner-Weir, S. (1999). Exendin-4 stimulates both beta-cell replication and neogenesis, resulting in increased beta-cell mass and improved glucose tolerance in diabetic rats. *Diabetes* 48, 2270–2276.
- Yeh, A. H., Jeffery, P. L., Duncan, R. P., Herington, A. C., and Chopin, L. K. (2005). Ghrelin and a novel preproghrelin isoform are highly expressed in prostate cancer and ghrelin activates mitogen-activated protein kinase in prostate cancer. *Clin. Cancer Res.* 11, 8295–8303.
- Yoo, Y. A., Kim, Y. H., Kim, J. S., and Seo, J. H. (2008). The functional implications of Akt activity and TGF-beta signaling in tamoxifen-resistant breast cancer. *Biochim. Biophys. Acta* 1783, 438–447.
- Younan, S. M., and Rashed, L. A. (2007). Impairment of the insulinotropic effect of gastric inhibitory polypeptide (GIP) in obese and diabetic rats is related to the down-regulation of its pancreatic receptors. *Gen. Physiol. Biophys.* 26, 181–193.
- Zidar, D. A., Violin, J. D., Whalen, E. J., and Lefkowitz, R. J. (2009). Selective engagement of G protein coupled receptor kinases (GRKs) encodes distinct functions of biased ligands. *Proc. Natl. Acad. Sci. U.S.A.* 106, 9649–9654.

Received: 11 November 2012; accepted: 10 April 2013; published online: 29 April 2013.

Citation: Gigoux V and Fourmy D (2013) Acting on hormone receptors with minimal side effect on cell proliferation: a timely challenge illustrated with GLP-1R and GPER. *Front. Endocrinol.* 4:50. doi: 10.3389/fendo.2013.00050

This article was submitted to *Frontiers in Neuroendocrine Science*, a specialty of *Frontiers in Endocrinology*.

Copyright © 2013 Gigoux and Fourmy. This is an open-access article distributed under the terms of the Creative Commons Attribution License, which permits use, distribution and reproduction in other forums, provided the original authors and source are credited and subject to any copyright notices concerning any third-party graphics etc.

Conflict of Interest Statement: The authors declare that the research was conducted in the absence of any commercial or financial relationships that could be construed as a potential conflict of interest.