



OPEN ACCESS

EDITED BY

Kevin R. Theis,
Wayne State University, United States

REVIEWED BY

Lauren Frances Messer,
University of Stirling, United Kingdom
Eva Majerová,
University of Hawaii at Manoa,
United States

*CORRESPONDENCE

Karla Heric

✉ karla.heric@unimelb.edu.au

RECEIVED 25 October 2022

ACCEPTED 21 July 2023

PUBLISHED 10 August 2023

CITATION

Heric K, Maire J, Deore P, Perez-Gonzalez A and van Oppen MJH (2023) Inoculation with *Roseovarius* increases thermal tolerance of the coral photosymbiont, *Breviolum minutum*. *Front. Ecol. Evol.* 11:1079271. doi: 10.3389/fevo.2023.1079271

COPYRIGHT

© 2023 Heric, Maire, Deore, Perez-Gonzalez and van Oppen. This is an open-access article distributed under the terms of the [Creative Commons Attribution License \(CC BY\)](https://creativecommons.org/licenses/by/4.0/). The use, distribution or reproduction in other forums is permitted, provided the original author(s) and the copyright owner(s) are credited and that the original publication in this journal is cited, in accordance with accepted academic practice. No use, distribution or reproduction is permitted which does not comply with these terms.

Inoculation with *Roseovarius* increases thermal tolerance of the coral photosymbiont, *Breviolum minutum*

Karla Heric^{1*}, Justin Maire¹, Pranali Deore¹, Alexis Perez-Gonzalez² and Madeleine J. H. van Oppen^{1,3}

¹School of Biosciences, The University of Melbourne, Parkville, VIC, Australia, ²Melbourne Cytometry Platform, Department of Microbiology and Immunology, The University of Melbourne, The Peter Doherty Institute of Infection and Immunity, Parkville, VIC, Australia, ³Australian Institute of Marine Science, Townsville, QLD, Australia

Coral reefs are diverse marine ecosystems that have tremendous ecological and cultural value and support more than 25% of eukaryote marine biodiversity. Increased ocean temperatures and light intensity trigger coral bleaching, the breakdown of the relationship between corals and their photosymbionts, dinoflagellates of the family Symbiodiniaceae. This leaves corals without their primary energy source, thereby leading to starvation and, often, death. Coral bleaching is hypothesized to occur due to an overproduction of reactive oxygen species (ROS) by Symbiodiniaceae, which subsequently accumulate in coral tissues. Bacterial probiotics have been proposed as an approach to mitigate coral bleaching, by reducing ROS levels in the coral holobiont through bacterial antioxidant production. Both corals and Symbiodiniaceae are known to associate with bacteria. However, the Symbiodiniaceae-bacteria relationship, and its impact on Symbiodiniaceae thermal tolerance, remains a poorly studied area. In this study, cultured Symbiodiniaceae of the species *Breviolum minutum* were treated with antibiotics to reduce their bacterial load. The cultures were subsequently inoculated with bacterial isolates from the genus *Roseovarius* that were isolated from the same *B. minutum* culture and showed either high or low ROS-scavenging abilities. The *B. minutum* cultures were then exposed to experimental heat stress for 16 days, and their health was monitored through measurements of cell density and photochemical efficiency of photosystem II. It was found that *B. minutum* inoculated with *Roseovarius* with higher ROS-scavenging abilities showed greater cell growth at elevated temperatures, compared to cultures inoculated with a *Roseovarius* strain with lower ROS-scavenging abilities. This suggests that *Roseovarius* may play a role in Symbiodiniaceae fitness at elevated temperatures. Analysis of Symbiodiniaceae-associated bacterial communities through 16S rRNA gene metabarcoding revealed that *Roseovarius* relative abundance increased in *B. minutum* cultures following inoculation and with elevated temperature exposure, highlighting the contribution they may have in shielding *B. minutum*

from thermal stress, although other bacterial community changes may have also contributed to these observations. This study begins to unpick the relationship between Symbiodiniaceae and their bacteria and opens the door for the use of Symbiodiniaceae-associated bacteria in coral reef conservation approaches.

KEYWORDS

bacteria, probiotics, reactive oxygen species, Symbiodiniaceae, coral

Introduction

Coral reefs are diverse marine ecosystems with highly beneficial ecological functions, such as providing protection of coastlines from degradation, and housing fish which humans harvest for nutrition and economic growth (Cesar et al., 2003). Reef-building corals associate with photosymbionts, dinoflagellate algae in the family Symbiodiniaceae (Lajeunesse et al., 2018). Nutrient exchange occurs between the two organisms; corals provide Symbiodiniaceae with the compounds they require for photosynthesis such as CO₂ (Yellowlees et al., 2008) and in turn, Symbiodiniaceae translocate photosynthate to corals for use in host cellular processes (Fournier, 2013). However, corals are experiencing stress due to climate change-induced summer heatwaves and exposure to high light levels that typically occur during summer heatwaves (Hughes et al., 2017). Such stressors break down the symbiotic relationship between Symbiodiniaceae and corals, causing coral bleaching and starvation (Weis, 2008; Suggett & Smith, 2019). Coral bleaching amounts to widespread habitat destruction for reef-dwelling organisms (Munday, 2004).

One of the mechanisms believed to be responsible for coral bleaching is the excess production of reactive oxygen species (ROS) by the Symbiodiniaceae following thermal and high light-induced damage to the symbionts' photosystems (Szabó et al., 2020). ROS are products of reactions of photosystems I and II (PSI and PSII) within chloroplasts of Symbiodiniaceae (Mehler, 1951; Richter et al., 1990). Some ROS, such as singlet oxygen from hydrogen peroxide (H₂O₂), are hypothesized to diffuse from the photosynthetic algae to the coral host, disrupt the mitochondrial membrane (Fournier, 2013), damage DNA (Barzilai and Yamamoto, 2004) and trigger a cellular cascade resulting in the loss of the Symbiodiniaceae (Weis, 2008). Providing exogenous antioxidants to corals has been shown to prevent bleaching under thermal stress, thus confirming a role of ROS underpinning the bleaching response (Lesser et al., 1990; Lesser, 1997).

Several coral bleaching mitigation methods have been proposed that aim to increase thermal tolerance in both corals and Symbiodiniaceae (van Oppen et al., 2015). One approach currently gaining traction is the use of bacteria (i.e., bacterial probiotics and microbiome transplantation) to enhance coral thermal bleaching tolerance (Rosado et al., 2019; Doering et al., 2021; Maire & van Oppen, 2021; Peixoto et al., 2021; Santoro et al., 2021; Dungan et al., 2022; Doering et al., 2023). Both corals and

Symbiodiniaceae associate with a diverse community of bacteria (Lawson et al., 2018; van Oppen and Blackall, 2019; Camp et al., 2020; Maire et al., 2021a). Bacteria are also found intracellularly in cultured and *in hospite* Symbiodiniaceae and on the extracellular surface of cultured Symbiodiniaceae (Maire et al., 2021c). Their contribution to nutrient acquisition or thermal stress tolerance is not well documented (Ritchie, 2012), but studies on other marine microalgae have demonstrated functional roles. For example, *Marinobacter* in the marine diatom *Pseudo-nitzschia multiseriis* (Amin et al., 2015) aids siderophore production and assists with resolving issues of iron bioavailability and iron acquisition (Amin et al., 2012). Recently, Motone et al. (2020) showed that a bacterium belonging to the genus *Muricauda* (Flavobacteriia) enhanced heat and light tolerance in Symbiodiniaceae cultures (*Durusdinium* sp.). Through antibiotic treatment, bacteria from the class Flavobacteriia were entirely depleted prior to experimental stress exposure. When Symbiodiniaceae cultures were exposed to thermal and light stress, photochemical efficiency of photosystem II (PSII) decreased with a concurrent increase in ROS, an effect that was significantly higher in cultures treated with antibiotics. However, this effect was smaller in cultures that were re-inoculated with *Muricauda*. This restored tolerance was attributed to *Muricauda*'s production of the carotenoid zeaxanthin, an antioxidant that ultimately promotes Symbiodiniaceae thermal and light resistance by minimizing damage by ROS. Bacteria sourced from Symbiodiniaceae themselves could thus be good candidates for probiotic use, but the functional relationship between Symbiodiniaceae as well as their potential contribution to thermal tolerance is relatively unexplored (Matthews et al., 2020).

Here, we conducted microbiome manipulation using a bacterium belonging to the genus *Roseovarius*. *Roseovarius* spp. have previously shown to have traits such as the ability to neutralize ROS molecules (Yoch, 2002; Miller and Belas, 2004; Randle et al., 2020). *Breviolum minutum* cultures isolated from *Exaiptasia diaphana* collected at the Great Barrier Reef were treated with antibiotics, inoculated with *Roseovarius*, and exposed to thermal stress. It was hypothesized that *B. minutum* inoculated with *Roseovarius* that had antioxidant abilities would be more thermally tolerant compared to *B. minutum* inoculated with *Roseovarius* lacking antioxidant ability, or a no-inoculum control. This study provides the foundation for future research into Symbiodiniaceae-bacteria relationships, and more generally the study of bacterial roles in Symbiodiniaceae heat tolerance.

Materials and methods

Symbiodiniaceae cultures

Breviolum minutum MMSF01 were obtained from *Exaiptasia diaphana* (Aiptasia) from the central Great Barrier Reef (Tortorelli et al., 2020). Cultures were maintained in 15 mL Daigo's IMK medium (1X concentration), prepared with filtered red sea salt water (fRSSW, 34 ppt) in sterile 50 mL polypropylene culture flasks where media was changed fortnightly. These flasks were kept in a 12 h light:12 h dark incubator (50–60 $\mu\text{mol photons m}^{-2}\text{s}^{-1}$ of photosynthetically active radiation) at 26°C.

Antibiotic treatment

The method detailed by Costa et al. (2019) was adapted to minimize bacterial community diversity and bacterial load in *B. minutum* cultures. First, 10 mL of Symbiodiniaceae culture were mixed with 18.7 μL of 0.1% Triton X-100 solution, and gently shaken for 30 sec to remove any loosely associated bacteria. This solution was then centrifuged for 5 min at 5000 $\times g$ and subsequently suspended in 10 mL of an antibiotic cocktail solution containing rifampicin, nalidixic acid, carbenicillin, nystatin and erythromycin (Table S1) for two days, then centrifuged and resuspended in IMK 1X for five days and this process was repeated three times in August 2020. During this time, flasks were maintained for three weeks in the same light and temperature conditions as described above. Following this antibiotic treatment, 50 μL Symbiodiniaceae culture were transferred to 1% agar plates that contained IMK (1X concentration), ampicillin, streptomycin, and gentamicin to further remove bacterial communities. Plates were maintained for one month in the same light and temperature conditions as described above, after which one colony was transferred to a new IMK plate supplemented with antibiotics and grown for one month. A single Symbiodiniaceae colony was then picked from the antibiotic agar plates and transferred to sterile 50 mL polypropylene culture flasks that contained 5 mL Daigo's IMK medium (0.5X concentration, prepared with fRSSW). This volume was then increased to 15 mL after two weeks and these cultures were then maintained (media changed fortnightly) for a year until the temperature stress experiment. Medium was diluted to 0.5X to increase reliance of the Symbiodiniaceae on their bacteria rather than receiving all their nutrients from the media itself. The resulting culture from this antibiotic treatment was named MMSF01-Ax.

Bacterial cultures

Twenty-three bacterial strains belonging to four genera of interest were selected based on potential beneficial functions reported in the literature (*Labrenzia*, *Muricauda*, *Marinobacter* and *Roseovarius*); these strains were previously isolated from *B. minutum* (Maire et al., 2021c) and were revived from glycerol stocks

kept at -80°C as part of the culture collection at the Marine Microbial Symbiont Facility (University of Melbourne, VIC, Australia). These bacterial isolates were streaked onto marine agar (Difco™ Marine Agar 2216) or Reasoner's 2A (Oxoid R2A Agar CM0906B) agar plates, grown in an incubator at 26°C, and subcultured by re-streaking for use when required.

Qualitative DPPH assay

The 23 bacterial isolates mentioned earlier were assessed for their antioxidant capacity with a qualitative 2,2-diphenyl-1-picrylhydrazyl (DPPH) assay. DPPH is a free radical that appears purple when in solution, however antioxidant compounds present in solution cause a purple to yellow color change (Floegel et al., 2011). This qualitative assay was completed by streaking bacterial isolates onto marine agar or Reasoner's 2A agar plates which were then grown in a 26°C incubator for six days. Sterile Whatman #4 filter papers were placed on top of the streak plates with bacterial colonies, and the plates with filters were placed back into the incubator for approximately six hours to ensure bacteria were absorbed by the filter paper. In a fume hood, filter papers were removed using sterile forceps, and left to dry with the 'bacterial side' up for ~30 min, before 1 mL of 0.2 mM DPPH (Sigma-Aldrich) solution in methanol was applied with a pipette as per Dungan et al. (2021). Bacterial isolates were assessed for the formation of a white-yellow halo around the bacterial colonies following DPPH application. If a halo appeared within 1 min the isolate was deemed strongly positive. If a halo appeared between 1 and 3 min it was weakly positive, and negative readings occurred when no halos formed.

Flow cytometry for bacterial quantification

To count the number of bacteria present in *B. minutum* cultures, staining with SYBR green dye which binds to nucleic acids was carried out using a modified method by Lawson et al. (2020). SYBR green dye 10,000X (Sigma-Aldrich) was first diluted 1:500 using MilliQ water. Prior to sampling, flasks were shaken for 3 seconds to suspend *B. minutum* in solution. A sample of 250 μL was taken from each culture flask and diluted with 250 μL of 0.5X IMK media. Twenty-five μL of 1:500 SYBR green were applied to the samples and incubated for 15 min. An unstained sample was also processed as a control (receiving 25 μL of milliQ water). Before flow cytometry processing with a CytoFLEX LX flow cytometer (Beckman Coulter), samples were filtered through a 40 μm mesh-size strainer (pluriSelect) and vortexed to suspend cells and remove clumps. Violet SSC height was used as an acquisition trigger. Symbiodiniaceae cells were gated and counted by autofluorescence using a 405 nm violet laser (emission 763 \pm 21.5 nm) (Figure S1). To differentiate SYBR green stained bacterial cells from debris and noise, 0.5X IMK media, MilliQ water and unstained samples were processed. Events measured in IMK-only samples (Figure S1A) were considered noise. Therefore, events from

Symbiodiniaceae samples falling in this part of the plot were also excluded (Figure S1D). Stained bacteria were analyzed via a bivariate plot of SYBR green fluorescence (488 nm excitation, emission 525 ± 20 nm) vs 405 nm side scatter (SSC) height. Singlet cells were gated and counted using a violet SSC area vs violet SSC height bivariate plot. At least 1000 Symbiodiniaceae cells were processed per sample. Bacterial count per Symbiodiniaceae cell was calculated by dividing bacterial cell count by Symbiodiniaceae cell count. These quantities were used to determine bacterial re-inoculation densities (see *Bacterial Re-inoculation* below).

Heat stress experiment

Symbiodiniaceae cultures

B. minutum cultures MMSF01 as well as MMSF01-Ax cultures treated with antibiotics were used for the heat stress experiment. These *B. minutum* cultures were subcultured into 20 experimental treatment culture flasks (Figure S2) at a starting density of ~5 x 10⁵ cells mL⁻¹. Following bacterial inoculation (see below), cultures were maintained in the ambient incubator (26°C) for 24 hours before day 0 sampling. Each culture was then separated into two flasks, for ambient and elevated temperature treatments. Ambient culture flasks were kept in the 12h light:12h dark incubator (50–60 μmol photons m⁻² s⁻¹ of photosynthetically active radiation) at 26°C for the duration of the experiment. Elevated temperature

treatment culture flasks were maintained in a 12h light:12h dark incubator under the same light conditions, at 32°C for the first 8 days of the experiment, with a subsequent temperature increase to 34°C on day 9 for seven days (Figure 1).

Bacterial re-inoculation

For each temperature treatment, cultures were subjected to four distinct treatments. The AB+ ROS+ (antibiotic treatment, bacterial inoculation with high antioxidant abilities) group aimed to assess the contribution of *Roseovarius* with putative antioxidant abilities to thermal tolerance. AB+ ROS- (antibiotic treatment, bacterial inoculation with low antioxidant abilities) was introduced to understand if *B. minutum* were exhibiting heterotrophic feeding whereby the bacteria would have acted as a food source (Jeong et al., 2012; Dungan et al., 2021). AB+ Control (antibiotic treatment, bacterial media inoculum) offered a comparison for the effect of *Roseovarius* inoculation, and the AB- Control (no antibiotic treatment, bacterial media inoculum) treatment group was included to understand the effect of the antibiotic treatment.

Bacterial isolate MMSF_3448 was chosen as the ROS+ bacterial treatment as it showed positive antioxidant properties in the DPPH assay and MMSF_3432 was chosen as ROS- as it was negative in the assay. Bacteria were streaked from frozen glycerol stocks onto marine agar plates and incubated at 26°C for 4 days. Using an inoculating loop, a single colony of each culture was transferred to

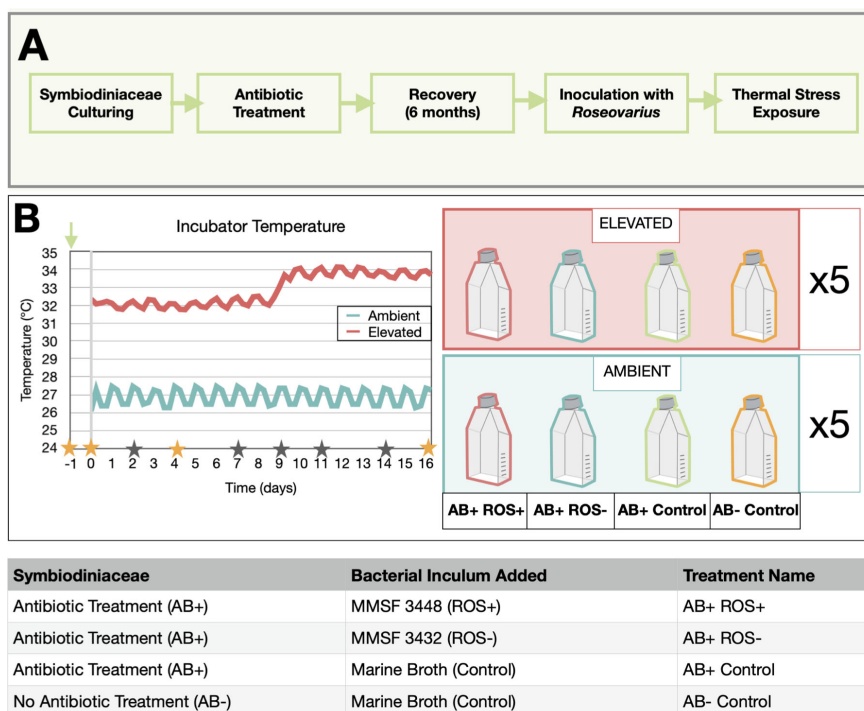


FIGURE 1

Experimental Design (A) Illustrates the sequence of experiments in this study. *B. minutum* were cultured and treated with antibiotics and maintained for one year until inoculation with *Roseovarius* and subsequent subjection to a heat stress. (B) The graph represents incubator temperature during the heat stress experiment obtained from data loggers (HOBO Pendant UA-001-08) in each incubator. Elevated incubator temperature was increased from 32°C to 34°C on day 9 of the experiment. Stars denote experiment sampling days, where orange stars show additional sampling for 16S rRNA gene metabarcoding. The green arrow indicates the day that *B. minutum* cultures were inoculated with bacteria. The right-hand side panel defines the four bacterial treatment groups (n = 5) exposed to ambient and elevated temperatures.

marine broth (Difco™ Micro Marine Broth 2216) (MB) and grown in an orbital incubator (Ratek orbital incubator) at 26°C and 300 rpm. Optical density (OD) readings were recorded at 600 nm using a plate reader (CLARIOstar Plus BGM Labtech). *Escherichia coli* approximations (OD₆₀₀ of 0.5 is equal to 4 × 10⁸ bacteria mL⁻¹) were used to calculate bacterial cell densities at measured ODs (Volkmer & Heinemann, 2011). Twelve hours prior to inoculation, broth cultures were diluted with MB to reach an OD₆₀₀ of 0.1 and returned to the orbital incubator. Cultures with an OD₆₀₀ of ~0.5 were vortexed and used to inoculate *B. minutum* a day prior to the temperature stress experiment, as per the following treatment groups listed in Figure 1.

As per bacterial abundance data obtained from 16S rRNA gene metabarcoding (Table 1), it was known that *Roseovarius* had 0.24% relative abundance prior to antibiotic treatment and was approximated to 0.5% for calculations. This, along with the bacterial cell counts per Symbiodiniaceae cell determined using SYBR green dye, was used to calculate the volume of inoculum required to deliver enough *Roseovarius* cells to restore its initial relative abundance. The number of *Roseovarius* cells to add through inoculation was determined by multiplying the Symbiodiniaceae cell density (5 × 10⁶ cells mL⁻¹) by the number of bacteria present in the culture per cell (124 bacterial cells per Symbiodiniaceae cell for culture receiving ROS+ *Roseovarius* strain inoculum, 153 bacterial cells per Symbiodiniaceae cell for culture receiving ROS- *Roseovarius* strain inoculum). Of this value, 0.5% of these bacteria are *Roseovarius*, thus 309,584 cells mL⁻¹ and 382,042 cells mL⁻¹ for each treatment respectively. For 100 mL of culture, 30,958,350 and 38,204,200 *Roseovarius* cells were added. An inoculum with an optical density (OD₆₀₀) of 0.5 contains 4 × 10⁸ cells mL⁻¹ (*E. coli* approximation). The OD₆₀₀ value for the ROS+ *Roseovarius* strain was determined to be 0.460 and 0.463 for ROS-, thus had bacterial densities of 3.8 × 10⁸ cells mL⁻¹ and 3.7 × 10⁸ cells mL⁻¹. These densities divided by the number of *Roseovarius* cells determined earlier (30,958,350 and 38,204,200) calculated volumes of 84 μL for ROS+ and 103 μL ROS-. AB+ Control and AB- Control received a 90 μL (averaged value) of inoculum. These inoculum volumes were added to 100 mL Symbiodiniaceae cultures thus, the differences in

inoculum volumes (80 uL – 100 uL) were deemed negligible due to the large final culture volume. To confirm inoculum viability, serial dilutions (10⁻¹ to 10⁻⁸) of each inoculum were plated onto MA plates with three replications per dilution. MA plates were incubated at 26°C for a week before colony forming units (CFUs) were counted (Table S2).

Symbiodiniaceae cell density

To quantify cell density over time, *B. minutum* cell density was obtained using a Countess II FL cell counter (Thermo Fisher scientific). Samples (100 μL) were taken from each replicate flask (five per treatment group). Of this, three 10 μL samples were processed to obtain cell density for each flask.

Microscopy PAM Fluorometry for Maximum Quantum Yield of PSII

To assess Symbiodiniaceae photosynthetic fitness, the maximum quantum yield of PSII (F_v/F_m of PSII) was measured using Pulse Amplitude Modulation (PAM) fluorometry. From each flask, 1 mL samples were briefly centrifuged (5 sec) to concentrate cells at the bottom of the tube, dark adapted for 15 min, and pipetted directly from the pellet onto a glass slide and covered with a cover slip for F_v/F_m estimations using microscopy-PAM (IMAGING-PAM M-Series, Walz, Germany) from 1300 hr. Samples belonging to a particular treatment group were processed at the same time on each sampling day to avoid variation in F_v/F_m due to the light variation across the day. Ten areas of interest containing three or more cells were focused simultaneously in each sample using a green colored neutral density filter (only allows green light to pass through) to avoid intense light exposure to samples, and imaged using blue measuring light. To obtain F_v/F_m, dark adapted samples were exposed to a measuring light intensity of 5 μmole quanta m⁻² s⁻¹ at 4 Hz frequency to record minimal fluorescence (F₀) followed by an application of saturating pulse of 309 μmole quanta m⁻² s⁻¹ for 720 ms. The gain and damping were set to 7 and 15, respectively, to minimize noise.

16S rRNA gene metabarcoding

DNA extractions

DNA was extracted using a salting-out method as detailed by Wilson et al. (2002) with modifications as per Hartman et al. (2020) from 200 μL samples taken from *Breviolum minutum* cultures which included *B. minutum* cells and culture medium, six months prior to the thermal stress experiment (Figure S3). Four extraction blanks were included. The same method was used during the thermal stress experiment detailed below with 200 μL samples that were taken from each culture flask on days -1, 0, 4 and 16 of the experiment. Six DNA extraction blanks were included.

Metabarcoding library preparation

To amplify hypervariable regions V5-V6 of 16S rRNA genes, the primer pair 784F (5' GTGACCTATGAACTCAGGAGTCAGGATTAGATACCCTGGTA 3') and 1061R (CTGAG

TABLE 1 Elimination of *Roseovarius* from *B. minutum* cultures.

Bacterial genus	Antibiotic Treatment	Mean Relative Abundance (%)
<i>Labrenzia</i>	AB-	12.15
	AB+	0.004
<i>Marinobacter</i>	AB -	0.48
	AB+	64.72
<i>Muricauda</i>	AB-	0.005
	AB+	0.15
<i>Roseovarius</i>	AB-	0.24
	AB+	0

Bacterial relative abundance in *B. minutum* of four genera of interest as determined by 16S rRNA gene metabarcoding, six months prior to inoculation and temperature exposure experiment where n = 3.

ACTTGCACATCGCAGCCRRRCACGAGCTGACGAC 3') were used. Underlined are the Illumina adapters attached to the primers. 16S rRNA gene PCR amplification, library preparation, and sequencing were completed as per the method detailed by Maire et al. (2021b). Briefly, bacterial 16S rRNA genes were amplified with PCR using a Thermal Cycler (Applied Biosystems, ThermoFisher Scientific) as per the following conditions: denaturation at 95°C for 3 min, 18 cycles of: denaturation at 95°C for 15 sec, annealing at 55°C for 30 sec and extension at 72°C for 30 sec, ending with extension at 72°C for 7 min. Each reaction contained 1 µL of DNA (extracted from samples mentioned earlier), 1.5 µL of 10 uM each forward and reverse primers, 7.5 µL MyTaq HSRed MasterMix (BioLine) and 3.5 µL nuclease-free water (ThermoFisher). Triplicates for each sample were conducted, and pooled following PCR. Preparation for library pooling was completed as per Maire et al. (2021c). Library preparation and MiSeq Illumina sequencing was performed at the Walter and Eliza Hall Institute (WEHI) in Melbourne, Victoria.

Data analyses

16S rRNA gene metabarcoding data analyses

16S rRNA gene metabarcoding data was processed using QIIME2 version 2021.8 (Bolyen et al., 2019). Metabarcoding data were obtained as paired-end, demultiplexed files with primers and adapters attached. The cutadapt plugin was used to remove primer and adapter sequences, with an error rate of 0.2. The quality of trimmed sequences was determined using the DADA2 plugin, which de-noises, filters, dereplicates, detects chimeras and merges paired-end reads (Callahan et al., 2016). Reads with low quality (Q-score < 30) were removed. To assign taxonomy, a SILVA classifier (version 138) was trained to classify bacterial 16S rRNA reads for hypervariable regions V5-V6. To construct a phylogenetic tree with mid-point rooting the alignment and phylogeny packages in QIIME2 were used (Caporaso et al., 2010). Reads that represented mitochondria and chloroplasts were filtered out. The metadata file, phylogenetic tree, and Amplicon Sequence Variant (ASV) tables were exported and analyzed in R studio.

The metadata file, phylogenetic tree, and Amplicon Sequence Variant (ASV) tables were imported into R studio for analyses, using the phyloseq package (McMurdie and Holmes, 2013). Rare ASVs (percentage abundance lower than 1.10^{-5}) were removed from the dataset. Samples with low read numbers (less than 400) were removed: 1 x ambient AB+ ROS-, 1 x ambient AB- Control and 3 x elevated AB+ ROS+, 1 x elevated AB- Control sampled on day 4, and 1 x ambient AB+ ROS+ from day 16. PCR and DNA blanks were analyzed to reveal contaminants using the decontam package (Table S3) for heat stress experiment data, as well as samples collected six months after antibiotic treatment (Table S4) (Davis et al., 2018). A Principal Coordinates Analysis (PCoA) plot was created using the UniFrac dissimilarity index, to visualize dissimilarities between bacterial communities in *B. minutum* cultures over time. One outlier (Ambient AB+ROS- collected on

day 0) was removed from the plot, as well as the AB- Control samples. A 3-factor nonparametric permutational multivariate analysis of variance (PERMANOVA) using UniFrac distance matrix was conducted to inform the interactions between time, temperature and bacterial treatments. Number of permutations was 999. A second PERMANOVA was used to assess the factors of temperature and bacterial treatments on day 16. The indicator value analysis (De Cáceres and Legendre, 2009) was applied on Day 16 samples, in each of the four conditions independently (AB- Control, AB+ Control, AB+ ROS-, AB+ ROS-), to detect ASVs that were significantly associated with either ambient or elevated treatment using a significance threshold $\alpha = 0.05$, specificity = 0.9, and fidelity = 0.9. Four *Roseovarius* ASVs were detected in the metabarcoding data, however, only the major ASV present in the inocula was further analyzed, as the remaining ASVs had very low percentage abundance (i.e., 0.06%) in the inoculum samples, as well as experimental samples. Statistical test results were considered significant where $\alpha = 0.05$, unless otherwise stated. Graphs were generated using GraphPad Prism version 9.2.0.

Statistical analyses of phenotypic data in R Studio

Statistical analyses were conducted using R Studio version 1.3.1073. Shapiro-Wilk tests were used to confirm normality in distributions within groups (Ghasemi & Zahediasl, 2012). For cell density data log transformations were required to normalize distributions (Keene, 1995) and fulfil the underlying assumptions underpinning analysis of variance (ANOVA) use. Levene's tests confirmed homogeneity of variances (Gastwirth et al., 2009), thus 3 factor ANOVAs were used for statistical analyses of Symbiodiniaceae cell density and maximum quantum yield readings. Pairwise comparisons between groups were completed using Welch's t-tests (DeCoster, 2006) for the previously mentioned datasets.

Results

Roseovarius as ROS-scavenging bacteria

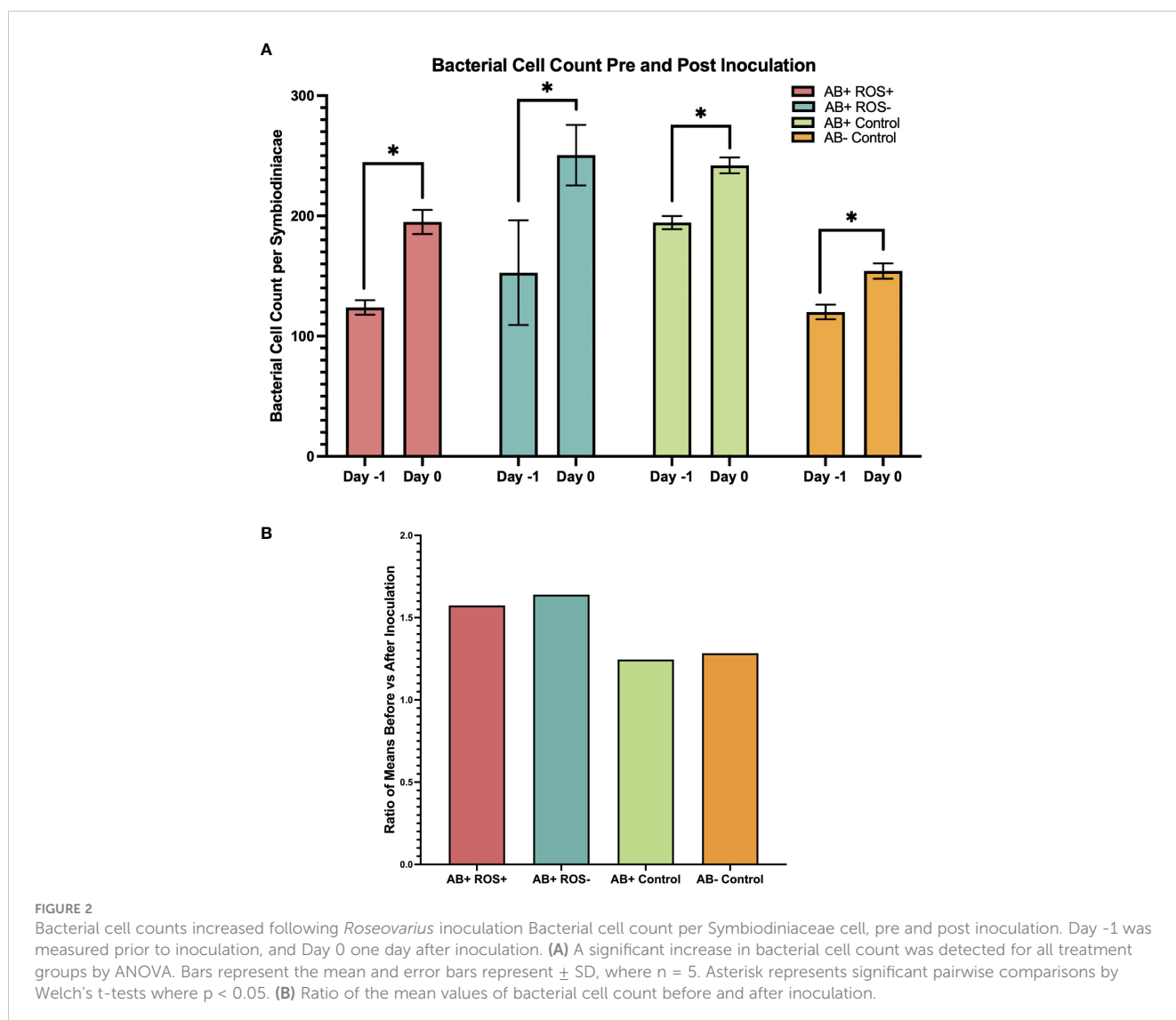
Of the 23 bacterial isolates tested for their ROS scavenging abilities, positive, or weakly positive readings were observed for only three isolates, with 20 appearing negative in the DPPH assay (Table S5). All three bacterial strains that recorded positive results belonged to the genus *Roseovarius*. Bacterial isolate MMSF_3448 was chosen as the ROS+ bacterial treatment and MMSF_3432 was chosen as ROS-. Analysis of previously obtained 16S rRNA gene sequences (Maire et al., 2021c) by BLAST showed that sequences for isolates MMSF_3448 and MMSF_3432 had 99% identity based on ~800 bp long fragments. Both isolates shared >99% identity with *Roseovarius confluentis*, *R. algicolus* and *R. atlanticus*. Thus, the species of MMSF_3448 and MMSF_3432 could not be determined, and are henceforth referred to as *Roseovarius* sp.

Effect of antibiotics and inoculation on Symbiodiniaceae bacterial community

Metabarcoding data collected six months after antibiotic treatment revealed changes in percentage abundances of bacteria belonging to the four genera of interest: *Labrenzia*, *Marinobacter*, *Muricauda* and *Roseovarius* prior to and post antibiotic treatment (Table 1). *Roseovarius* was entirely depleted in the antibiotic treatment cultures, with very low relative abundances of *Labrenzia* remaining (0.004%). Interestingly, *Muricauda* increased in relative abundance (0.005 to 0.15%) in the antibiotic treated *B. minutum*, while it was not detected in the non-treated culture, and *Marinobacter* showed greater relative abundance (0.5 to 65%) in antibiotic treated *B. minutum*. In addition to the four genera of interest, Phycisphaeraceae, Gammaproteobacteria, *Pseudohongiella*, and Leptospiraceae drastically diminished in relative abundance following antibiotic treatment whilst Micavibrionales and *Balneola* greatly increased (Figure S4). Thus, the antibiotic treatment was variably effective, but overall was successful in removing some

bacterial species from *B. minutum* such as *Roseovarius*, which was then used for reinoculation.

The number of bacteria significantly increased following inoculation for all bacterial treatments with increases of greater magnitude observed for bacterial inocula compared to media alone (Figure 2; Table S6). AB+ ROS+, AB+ ROS- and AB- Control contained on average 130 bacterial cells per Symbiodiniaceae cell prior to inoculation (day -1) which increased variably depending on the treatment. Interestingly, AB+ Control had the highest number of bacterial cells on day -1 with an average of 194 bacterial cells per Symbiodiniaceae cell and AB- Control had the lowest with an average of 120. AB+ ROS- showed the highest post-inoculation count with an average of 250 cells mL⁻¹, with AB+ Control, AB+ ROS+ and AB- Control increasing to 242, 195 and 154, respectively. The ratio of the means of bacterial cell count before and after inoculation was approximately 1.6 for AB+ ROS+ and AB+ ROS- and 1.3 for AB+ Control and AB- Control. The greater increase observed for treatments receiving *Roseovarius* compared to bacterial media alone confirms the success of inoculation (Table S7).



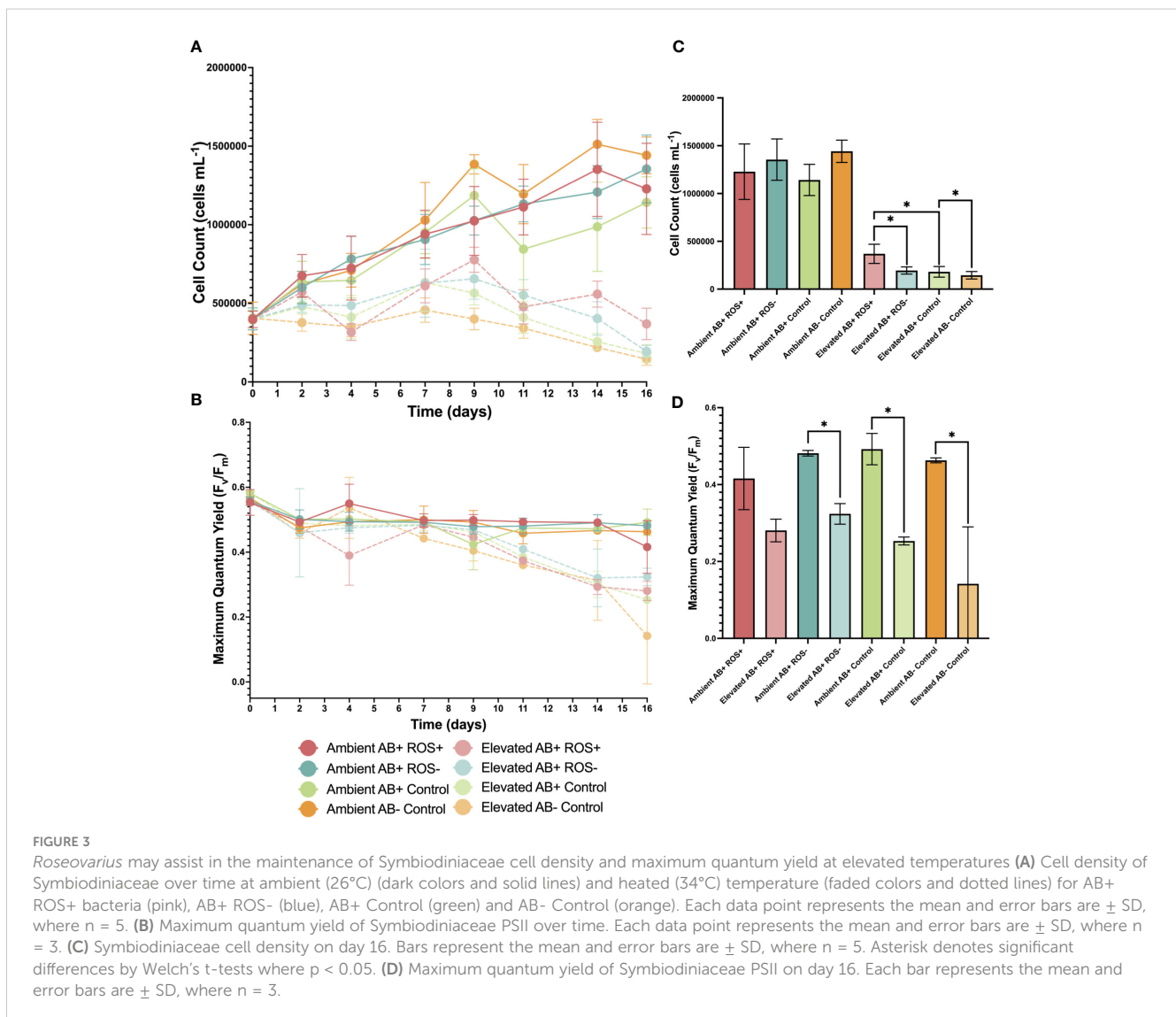
Inoculation with ROS-scavenging *Roseovarius* assisted with maintaining cell densities at elevated temperature

Symbiodiniaceae cell density was measured throughout the heat stress experiment (Figure 3A). A three-way ANOVA informed that all three factors (time, temperature, and bacterial treatment) (Table S8), as well as the two-way and three-way interactions between these factors, had a significant effect. Overall, cell density for all elevated treatments decreased over time, but it was found that AB+ ROS+ did not decrease as much as the other treatment groups (Figure 3A). On day 16, cell density was significantly lower for cultures in elevated temperature condition compared to ambient (Figure 3C; Table S9), confirming the negative effect of elevated temperature on cell density as well as signifying that the cells were under stress. Mean cell density at ambient temperatures were on average three times higher on day 16 compared to day 0 (Table S10): AB+ ROS-, AB+ Control and AB-Control treatments observed a 51%, 54% and 64% decrease in mean cell density, respectively, between day 0 and day 16. Conversely, AB+ ROS+ exposed to elevated temperature only observed a decrease of

7% in mean cell density over time. On day 16, cell density was significantly higher in elevated AB+ ROS+ compared to AB+ ROS-, and AB+ ROS+ compared to AB+ Control (Table S10). Additionally, Symbiodiniaceae cell density was significantly higher in AB+ Control vs AB- Control on day 16 (Table S10). Together these results suggest that *B. minutum* experienced thermal stress at elevated temperature which lessened cell density as time progressed, however the addition of *Roseovarius* through inoculation minimized the negative effect of temperature on cell fitness.

Inoculation with ROS-scavenging *Roseovarius* did not lead to detectable negative effects on photochemical efficiency of Symbiodiniaceae at elevated temperature

The maximum quantum yield (F_v/F_m) of the Symbiodiniaceae was measured as a proxy for photosynthetic fitness throughout the heat stress experiment (Figure 3B). A three-way ANOVA analysis



showed that the time and temperature, as well as their interaction, had a significant effect but bacterial treatment and all other interactions did not - at least not over the course of the experiment (Table S11). For all bacterial treatments, F_v/F_m was significantly lower on day 16 compared to day 0 at elevated temperature (Table S12), indicative of heat stress in these cultures. On day 16, however, pairwise t-tests confirmed that F_v/F_m was significantly lower in elevated AB+ ROS-, AB+ Control and AB- Control when compared to their ambient counterparts (Figure 3D; Table S13), suggesting there are greater disturbances to *B. minutum* maximum quantum yield when *Roseovarius* with antioxidant abilities are absent. Conversely, no significant differences were detected in F_v/F_m for ambient compared to elevated temperature treatments for AB+ ROS+ *B. minutum* on day 16 (Table S13), suggesting a role for *Roseovarius* for photochemical performance in *B. minutum* at heightened temperature. It is however possible that the lack of significant difference observed between AB+ROS+ on day 16 was due to the variability of samples that limited the power of statistical analyses. The greatest difference in F_v/F_m between day 0 and day 16 was observed for elevated AB- Control (75% decrease). Overall, F_v/F_m decreased for all treatment groups at elevated temperatures, suggesting that temperature strongly impacted the maximum quantum yield of *B. minutum* but the addition of *Roseovarius* minimized these effects.

Bacterial communities changed throughout exposure to elevated temperature

The bacterial community composition was highly similar among samples belonging to day -1, day 0, and day 4, regardless of the temperature or bacterial treatment (Figure 4A). However, on day 16, samples obtained from elevated temperature groups clustered away from those at ambient temperatures, suggesting a combined effect of time and temperature on bacterial community structure. PERMANOVA analysis confirmed these observations, as time and temperature, as well as their interaction, were significant in explaining the dissimilarity, but bacterial treatment was not (Table S14). However, the interaction between bacterial treatment and time was also found to be significant. In light of these interactions, further PERMANOVA analysis was conducted for day 16, which showed that bacterial communities were significantly different between ambient and elevated temperatures, and between bacterial treatments (Table S15). This pattern was also seen at the family level (Figure 4B). AB- Control was most different to AB+ ROS+, AB+ ROS- and AB+ Control on day 0, with the largest percentage abundance (20%) being bacteria of the family Bacteriovoraceae. Major community composition changes over time were similar across the three treatments AB+ ROS+, AB+ ROS- and AB+ Control. Taxa such as Algiphilaceae and Balneolaceae showed a drastic decrease in relative abundance between day 0 and day 16, where Algiphilaceae decreased from an average of 35% to <1% and Balneolaceae decreased from 10% to 3%. Rickettsiales relative abundance increased variably, regardless

of temperature, showing the impact of time alone on community composition. Other taxa, such as Terasakiellaceae and Oleiphilaceae, increased in relative abundance from an average of 3% to 10% in Terasakiellaceae and <1% to 6% on average in Oleiphilaceae only at elevated temperature, highlighting the effect of temperature over time on community composition. These changes were underpinned by differences in ASV abundances at ambient and elevated temperatures for each treatment group, which were investigated with an indicator analysis (Figure S5). For elevated treatments, ASV 15 UC Terasakiellaceae and ASV 16 *Oleiphilus* sp. were the most abundant indicator ASVs for AB+ Control, AB+ROS-, and AB+ROS+. For elevated AB- Control ASV 40 UC Saprospiraceae and ASV 31 *Pelagibius* sp. appeared in higher abundances. Ambient indicator species include ASV 03 UC Paracaedibacteraceae most prevalent in AB+ROS- and AB+ Control and ASV 01 UC Rickettsiales in AB- Control and AB+ROS+. *Labrenzia* were more abundant at elevated temperature with ASV 28 *Labrenzia* sp. and ASV 32 *Labrenzia marina* being abundant indicator ASVs at elevated temperatures. Altogether, these results suggest that bacterial community structure changed over time as a result of temperature exposure, with variable changes observed in different bacterial taxa.

Roseovarius inoculation was successful

To assess *Roseovarius* persistence following inoculation and thus the sustained success of inoculation over time, *Roseovarius* relative abundance was determined throughout the experiment using 16S rRNA gene metabarcoding. Following decontamination, three ASVs were found in the two inocula, all belonging to the genus *Roseovarius*, with one single ASV (*Roseovarius* sp. ASV01) making up 99% and 98% of the reads in the ROS+ and ROS- inocula, respectively which points to high inocula purity (Figure S6). The remaining 1-2% of reads were likely contaminants from library preparation, as well as the 1.9% ASV01 abundance which was observed in the control inoculum. Thus, the abundance of this major ASV that comprised the two *Roseovarius* inocula was further investigated. Prior to inoculation, *Roseovarius* sp. ASV01 relative abundances were ~4% for AB+ ROS+ and AB+ ROS-, 2% for AB+ Control and 0.6% for AB- Control, which contrasts with metabarcoding data that were obtained six months prior to the heat stress experiment where *Roseovarius* was not detected (Table 1). In fact, overall bacterial communities were quite different between the beginning of the heat stress experiment and the sampling conducted six months prior. Six months before the heat stress experiment, AB-cultures were dominated by Phycisphaeraceae, Stappiaceae, and Pseudohongiellaceae in comparison to AB+ cultures that mostly contained Marinobacteraceae as well as Balneolaceae and Micavibrionales (Figure S4B). On day 0 of the heat stress experiment, Phycisphaeraceae were still highly abundant but Bacteriovoraceae were most abundant for AB- cultures. At this time, Algiphilaceae, Balneolaceae, and Marinobacteraceae were observed in the highest abundance for AB+ cultures. *Roseovarius* relative abundance increased significantly over the course of the heat stress experiment (Figure 5; Table S16), particularly on day 16 for elevated treatment groups, with a 17% and 16% abundance observed

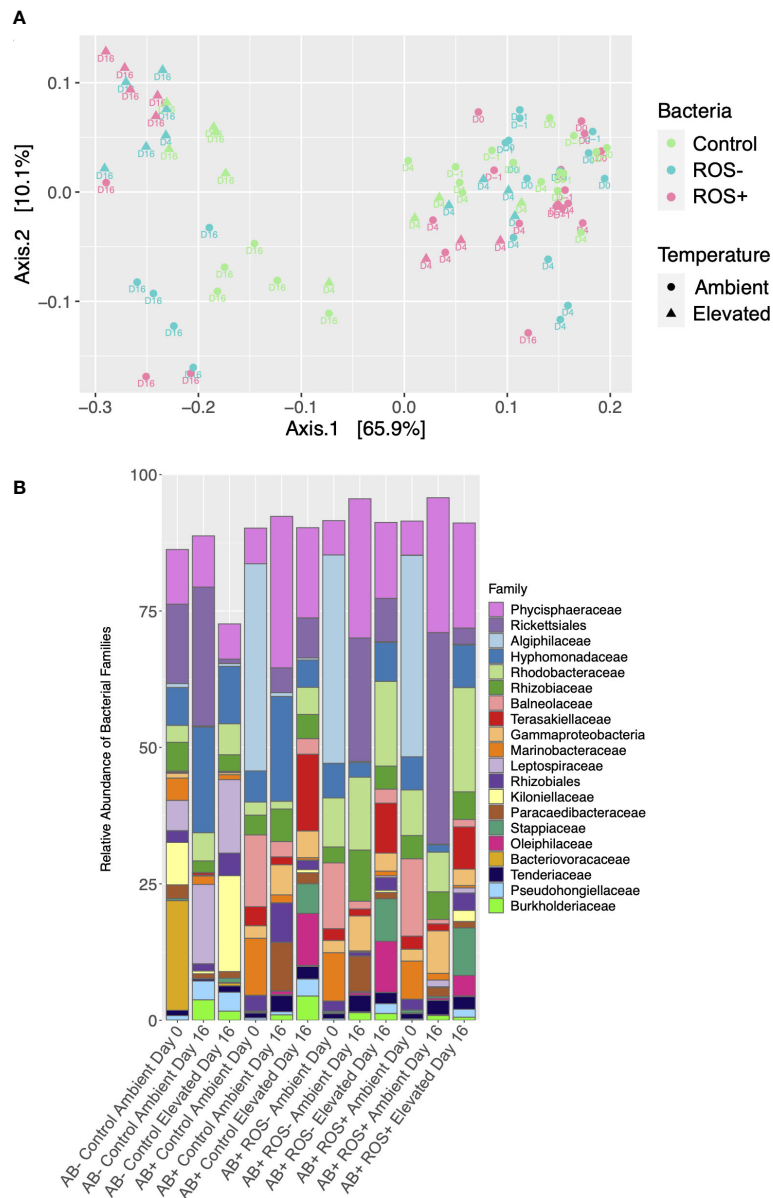


FIGURE 4 Bacterial communities changed throughout exposure to elevated temperature (A) PCoA plot where Axis 1 and Axis 2 are PC1 and PC2 respectively, representing the beta-diversity of bacterial communities of three of the bacterial treatments in antibiotic-treated cultures, AB+ ROS+ (Positive), AB+ ROS- (Negative) and AB+ Control (Media) at ambient and elevated temperatures. Each data point denotes a single sample, retrieved on a given sampling day: day -1, day 0, day 4 and day 16 (D-1, D0, D4 and D16, respectively) of the experiment. (B) Bar chart of percentage abundance of the top 20 bacterial families present in samples on day 0 and day 16, at ambient and elevated temperature.

for AB+ ROS+ and AB+ ROS- respectively at the conclusion of the experiment, compared to only 4% for AB+ Control and 1% for AB-Control, demonstrating that inoculated *Roseovarius* was able to establish itself in the *B. minutum* cultures. Further, on day 16, *Roseovarius* relative abundance was significantly higher at elevated temperature, compared to ambient, in the AB+ ROS+ and AB+ control treatments, but not for AB+ ROS- and AB- Control (Table S17). Overall, *Roseovarius* relative abundance showed greater increases over time after inoculation with *Roseovarius*, compared to negative controls confirming the successful establishment of inoculated *Roseovarius* into the *B. minutum* cultures.

Discussion

The relationship between Symbiodiniaceae and their bacteria is not extensively studied, and further inquiries are required to understand the functional contribution of bacteria to Symbiodiniaceae health and survival. Here, an antibiotic cocktail was administered to minimize *B. minutum*'s bacterial load and diversity, with subsequent inoculation with *Roseovarius* and exposure to elevated temperature. *B. minutum* inoculated with *Roseovarius* with high ROS-scavenging abilities showed greater cell density and smaller decreases in F_v/F_m at elevated temperatures, suggesting that *Roseovarius* may provide benefits to

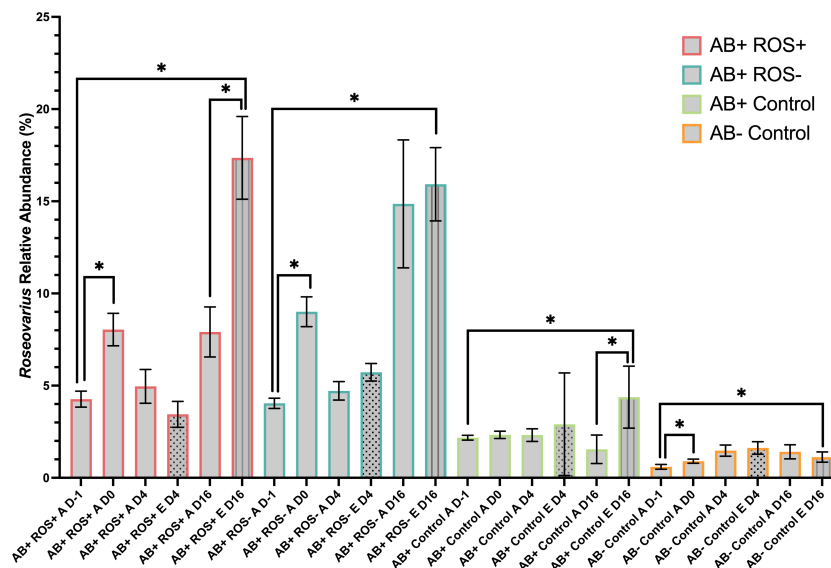


FIGURE 5

Roseovarius persisted in *B. minutum* culture following inoculation. Relative abundance of *Roseovarius* sp. ASV01 in each bacterial treatment over time (day -1 to day 16). A and E denote ambient and elevated temperatures, respectively. Bars represent the mean and error bars are \pm SD, where $n = 5$. Asterisks denote significant differences by Welch's t -tests where $p < 0.05$. Significant differences were detected when comparing samples obtained prior to inoculation (day -1) and a day after inoculation (day 0), as well as comparisons between day -1 and day 16. Elevated treatment bars appear patterned on day 4 and day 16 to allow for clearer comparisons.

B. minutum under heat stress conditions. Analysis of Symbiodiniaceae bacterial communities through 16S rRNA gene metabarcoding revealed that *Roseovarius* relative abundance increased in *B. minutum* cultures following inoculation and increased with elevated temperature exposure, suggesting they may play a role in shielding *B. minutum* from the effects of thermal stress.

Antibiotic treatment was marginally effective at removing bacterial community members

The *B. minutum* cultures were not rendered axenic following antibiotic treatment. Of the four genera of interest (*Labrenzia*, *Marinobacter*, *Muricauda*, *Roseovarius*), *Roseovarius* was no longer detected in antibiotic treated *B. minutum* cultures, with considerable decreases seen in *Labrenzia*. In contrast, *Muricauda* and *Marinobacter* showed an increase in relative abundance, in antibiotic treated *B. minutum*. Thus, the antibiotic treatment was successful in significantly reducing the abundance of certain genera, but not all. By estimating absolute bacterial load prior to inoculation, it was found that the cultures not treated with antibiotics had fewer bacteria present compared to all antibiotic treatment cultures. This pattern is opposite to expectations and suggests that the antibiotic treatment had limited effectiveness in removing bacteria associating with Symbiodiniaceae. Alternatively, the bacteria may have been able to grow back to pre-AB treatment levels during recovery, as the cultures were maintained for one year following antibiotic treatment. Additionally, while we observed an absence of *Roseovarius* six months after antibiotic treatment,

samples taken approximately one year after antibiotic treatment during the heat stress experiment showed a resurgence of *Roseovarius*, which was accompanied by other major changes in bacterial community composition. This suggests that bacteria, including *Roseovarius*, may have been reintroduced following antibiotic treatment, or that undetectable levels of *Roseovarius* were still present which later resurfaced. Similar antibiotics durably depleted Flavobacteriia from Symbiodiniaceae in an earlier study, after two months of antibiotic treatment and three months of recovery, although absolute bacterial load was not measured (Motone et al., 2020). In contrast, Xiang et al. (2013) reported the complete elimination of bacterial associates in five Symbiodiniaceae cultures.

Interestingly, cultures that did not go through antibiotic treatment showed the greatest fitness decrease over time at elevated temperature, as reflected in the cell density and photochemical efficiency data. It is possible that some bacteria that resisted the antibiotic treatment were able to thrive following the removal of antibiotic-sensitive bacteria, and have functions that assist with thermal tolerance. The antibiotic treatment restructured the microbiome and it is possible that the microbiome modifications following antibiotic treatments rendered it more beneficial during thermal stress. Further studies with the *B. minutum* cultures without antibiotic treatment in addition to inoculation with ROS-scavenging bacteria (ROS+) and non-ROS-scavenging bacteria (ROS-) will help to understand these observed differences. The thermally tolerant photosymbiont genus *Durusdinium* has previously shown the greatest microbiome stability under experimental thermal stress, suggesting that stable microbiomes assist with thermal tolerance (Camp et al., 2020). Heat-evolved *Cladocopium*, exposed to elevated temperature (31°C)

for 6 years, housed less diverse but more stable bacterial communities than their wild type counterparts (Buerger et al., 2022), with differences in microbiome composition suspected to contribute to thermal tolerance. Thus, a heat-selected microbiome achieved through experimental evolution (Buerger et al., 2022) or inoculation with certain bacteria (Motone et al., 2020) may equip Symbiodiniaceae for elevated temperature conditions, however further functional studies are required.

Exposure to elevated temperature induced changes in bacterial communities of *B. minutum*

Changes in bacterial community structure were observed, with temperature being a significant factor influencing these changes, although those changes did not occur immediately. This suggests that the effects of bacterial treatment were delayed and coupled with extended exposure to thermal stress conditions. Therefore, other bacteria, beyond *Roseovarius*, may have played a role in thermal stress tolerance. This was also reflected in studies completed by Camp et al. (2020), whereby *B. minutum* experienced significant bacterial community changes when exposed to elevated temperatures. *B. minutum* was associated with both *Roseovarius* and *Labrenzia* at similar relative abundances under ambient and elevated temperature, with little *Hyphobacterium* observed at elevated temperature (Camp et al., 2020). Following Symbiodiniaceae experimental evolution, the genera *Labrenzia*, *Algiphilus*, *Hyphobacterium* and *Roseitalea* were more abundant in heat-evolved *Cladocopium* strains compared to wild type (Buerger et al., 2022). Interestingly, we observed higher *Algiphilus* (family Gammaproteobacteria) relative abundance following antibiotic treatment in *B. minutum*, although it decreased following exposure to elevated temperature. *Labrenzia* are found in high relative abundance across the majority of Symbiodiniaceae strains (Lawson et al., 2018; Camp et al., 2020; Maire et al., 2021c; Díaz-Almeyda et al., 2022). *Labrenzia* plays a role in the production of dimethylsulfoniopropionate (DMSP) in other dinoflagellates (Sunda et al., 2002) which is a compound that scavenges ROS, thus it may function as an antioxidant and assist with heat stress tolerance. In our analysis, *Labrenzia* were found in higher abundance at elevated temperature on day 16. The altered community following elevated temperature exposure in our study may have influenced thermal tolerance due to the presence of *Roseovarius*, *Labrenzia*, and bacterial species that provide a functional contribution to thermal stress mitigation.

Despite the antibiotic treatment's limited capacity to perturb the *B. minutum* microbiome and the resurgence of *Roseovarius* before the thermal stress experiment, *Roseovarius* established in the *B. minutum* cultures following inoculation. This suggests that treating Symbiodiniaceae with antibiotics may not be necessary in order to assess the contributions of inoculated bacteria. *Roseovarius* relative abundance had greater increases at elevated compared to

ambient temperature, thus *Roseovarius* may be better at competing with other bacteria at elevated temperature.

Roseovarius may assist in the maintenance of Symbiodiniaceae cell density and maximum quantum yield at elevated temperatures

Re-inoculation with ROS-scavenging *Roseovarius* may have contributed to greater *B. minutum* cell density at elevated temperatures. At the conclusion of the temperature stress experiment, cell density at elevated temperatures were significantly higher for flasks inoculated with ROS-scavenging *Roseovarius*, compared to other elevated temperature bacterial treatment groups, albeit lower than in the ambient treatment. In addition, smaller reductions in maximum quantum yield were detected in flasks inoculated with ROS-scavenging *Roseovarius*, suggesting this treatment group maintained better photosynthetic fitness compared to controls at elevated temperatures. Statistical analyses may have been affected by sample variability, in turn contributing to the non-detectable differences in maximum quantum yield observed for ROS-scavenging *Roseovarius* inoculated flasks. Greater sample size in future studies would disentangle whether these observations were limited by the statistical analyses. In addition, since absolute bacterial load was not measured, observed *Roseovarius* increases only reflect the proportional change in bacterial communities, not whether *Roseovarius* cell abundance increased. Thus, future studies should measure absolute abundances to conclusively determine inoculation success and subsequent influence on inoculated species. The addition of a *Roseovarius* strain with low ROS-scavenging abilities was a useful control group as cultured Symbiodiniaceae can feed on bacteria (Jeong et al., 2012). If heterotrophic feeding was responsible for the observed fitness increases, the same effects would have been expected for the *Roseovarius* inoculation with the low ROS scavenging strain. Previous cnidarian probiotic studies have failed to include such treatment groups for comparison (Rosado et al., 2019; Doering et al., 2021; Santoro et al., 2021; Zhang et al., 2021), with few including an inoculum without the beneficial function under study (Dungan et al., 2021; Dungan et al., 2022), but it should become common practice in future investigations.

In a previous study by Maire et al. (2021c), species of *Roseovarius* appeared both closely and loosely associated to *B. minutum*. Relative abundances of *Roseovarius* were 1% for closely associated fractions and less than 0.01% for loosely associated fractions (Maire et al., 2021c), suggesting *Roseovarius* preferably closely associate with *Breviolum*. However, we cannot confirm the particular ASV assessed here closely associates with *B. minutum* as samples for DNA extraction were not washed and filtered upon collection. Thus, *Roseovarius* in our study may simply be free-living within the culture medium. Further, Maire et al. (2021c) suggest that bacteria appear on the external surface of Symbiodiniaceae cells

under culture conditions and are absent *in hospite*. As we cannot conclude the nature of the association of *Roseovarius* with *B. minutum* and there is a possibility that the bacteria exist within the culture medium, further research is required to determine whether *Roseovarius* closely associate with *B. minutum* and subsequently if this association confers any benefits *in hospite*.

Roseovarius was found to play a key role in sulfur cycling and the de-methylation of DMSP to dimethylsulfide (DMS) in the dinoflagellate *Pfiesteria piscicida* (Yoch, 2002; Miller and Belas, 2004). In species of *Roseovarius* isolated from seawater (González et al., 2003), DMS and DMSP were found to play a role in the DMSP antioxidant system and scavenge ROS (Sunda et al., 2002), which could contribute to the reduction of oxidative stress during thermal stress. Additionally, *Roseovarius* was detected in heat-stressed corals (Pootakham et al., 2019), and *Aliiroseovarius*, a closely related genus, increased in relative abundance during heat stress at high salinities in the sea anemone *Exaiptasia diaphana* (Randle et al., 2020), suggesting a functional contribution to thermal stress. Whole-genome sequencing of the two isolates used in our study should be undertaken to understand the mechanisms underlying the different effects they had on Symbiodiniaceae cultures, and whether it is indeed ROS-related or whether other biological processes are at play.

Microbiome manipulations such as those used in the present study are carried out to understand if Symbiodiniaceae-associated bacteria can enhance thermal tolerance. Targeted studies like our investigation as well as Motone et al. (2020) aim primarily to elucidate specific bacteria of interest that may confer beneficial functions and increase thermal tolerance of Symbiodiniaceae, and future investigations should assess the nature of the association of bacteria with Symbiodiniaceae *in hospite* in order to make concrete conclusions about their beneficial functions. It has been shown that bacterial communities of Symbiodiniaceae differ following experimental evolution (Buerger et al., 2022), and these changes may contribute to the increased Symbiodiniaceae heat tolerance. Further studies are required to assess if *Roseovarius* contribute to thermal tolerance of Symbiodiniaceae *in hospite* and whether there are potential implications in coral restoration. Insightful future investigations include inoculating Symbiodiniaceae, or corals experiencing thermal stress, to observe which bacterial community members are incorporated which could suggest beneficial functions.

Conclusion

This study begins to decipher the relationship between Symbiodiniaceae and their bacteria with a particular focus on the genus *Roseovarius*. The findings demonstrate the positive effect of *Roseovarius* inoculation on cultured Symbiodiniaceae exposed to thermal stress and suggest a potential functional role of *Roseovarius* in Symbiodiniaceae thermal tolerance. Further studies are required to explore whether bacterial inoculation with *Roseovarius* could be used to mitigate thermal stress in other Symbiodiniaceae species or in corals, and may give rise to new research avenues and coral restoration practices.

Data availability statement

The datasets presented in this study can be found in online repositories. The names of the repository/repositories and accession number(s) can be found below: <https://www.ncbi.nlm.nih.gov/PRJNA887911> <https://www.ncbi.nlm.nih.gov/PRJNA887545>.

Author contributions

Conceptualization: KH, JM, and MO. Formal analysis: KH and JM. Funding acquisition: MO. Investigation: KH, JM, and PD. Methodology: KH, PD, and AP-G. Supervision: MO and JM. Visualization: KH. Writing – Original Draft Preparation: KH, JM, and MO. All authors contributed to manuscript revision, read, and approved the submitted version.

Funding

This study was funded by the Australian Research Council Laureate Fellowship FL180100036 to MO. PD was supported by Gordon Betty Moore foundation (grant number – 9351).

Acknowledgments

We are grateful to: Dr. Sanjida Topa for assisting with processing metabarcoding samples and Dr. Ashley Dungan for providing assistance with metabarcoding data analysis.

Conflict of interest

The authors declare that the research was conducted in the absence of any commercial or financial relationships that could be construed as a potential conflict of interest.

Publisher's note

All claims expressed in this article are solely those of the authors and do not necessarily represent those of their affiliated organizations, or those of the publisher, the editors and the reviewers. Any product that may be evaluated in this article, or claim that may be made by its manufacturer, is not guaranteed or endorsed by the publisher.

Supplementary material

The Supplementary Material for this article can be found online at: <https://www.frontiersin.org/articles/10.3389/fevo.2023.1079271/full#supplementary-material>

References

- Amin, S. A., Green, D. H., Waheeb, D. A., Gardes, A., and Carrano, C. J. (2012). Iron transport in the genus *Marinobacter*. *Biomaterials* 25, 135–147. doi: 10.1007/s10534-011-9491-9
- Amin, S. A., Hmel, L. R., van Tol, H. M., Furham, B. P., Carlson, L. T., Heal, K. R., et al. (2015). Interaction and signalling between a cosmopolitan phytoplankton and associated bacteria. *Nature* 522, 98–101. doi: 10.1038/nature14488
- Barzilai, A., and Yamamoto, K. (2004). DNA damage responses to oxidative stress. *DNA Repair (Amst)* 3(8–9):1109–1115. doi: 10.1016/j.dnarep.2004.03.002
- Bolyen, E., Rideout, J. R., Dillon, M. R., Bokulich, N. A., Abnet, C. C., Al-Ghalith, G. A., et al. (2019). Reproducible, interactive, scalable and extensible microbiome data science using QIIME 2. *Nat. Biotechnol.* 37, 852–857. doi: 10.1038/s41587-019-0209-9
- Buerger, P., Vanstone, R. T., Maire, J., and van Oppen, M. J. H. (2022). Long-term heat selection of the coral Endosymbiont *Cladocopium C1^{acro}* (Symbiodiniaceae) stabilizes associated bacterial communities. *Int. J. Mol. Sci.* 23 (9), 4913. doi: 10.3390/ijms23094913
- Callahan, B. J., McMurdie, P. J., Rosen, M. J., Han, A. W., Johnson, A. J. A., and Holmes, S. P. (2016). DADA2: high-resolution sample inference from Illumina amplicon data. *Nat. Methods* 13, 581. doi: 10.1038/nmeth.3869
- Camp, E. F., Kahlke, T., Nitschke, M. R., Varkey, D., Fisher, N. L., Fujise, L., et al. (2020). Revealing changes in the microbiome of Symbiodiniaceae under thermal stress. *Environ. Microbiol.* 22 (4), 1294–1309. doi: 10.1111/1462-2920.14935
- Caporaso, J. G., Kuczynski, J., Stombaugh, J., Bittinger, K., Bushman, F. D., Costello, E. K., et al. (2010). QIIME allows analysis of high-throughput community sequencing data. *Nat. Methods* 7, 335–336. doi: 10.1038/nmeth.f.303
- Cesar, H., Burke, L., and Pet-Soede, L. (2003). The economics of worldwide coral reef degradation, Cesar Environmental Economics Consulting, Arnhem.
- Costa, R. M., Fidalgo, C., Cardenas, A., Frommlet, J. C., and Voolstra, C. R. (2019). Protocol for the generation of axenic/bacteria-depleted Symbiodiniaceae cultures. doi: 10.17504/protocols.io.87khkzw
- Davis, N. M., Proctor, D. M., Holmes, S. P., Relman, D. A., and Callahan, B. J. (2018). Simple statistical identification and removal of contaminant sequences in marker-gene and metagenomics data. *Microbiome* 6, 226. doi: 10.1186/s40168-018-0605-2
- De Cáceres, M., and Legendre, P. (2009). Associations between species and groups of sites: Indices and statistical inference. *Ecology* 90, 3566–3574. doi: 10.1890/08-1823.1
- DeCoster, J. (2006). *Testing Group Differences using T-tests, ANOVA, and Nonparametric Measures*. Available at: <http://www.stat-help.com/notes.html> (Accessed 27/09/21).
- Diaz-Almeyda, E. M., Ryba, T., Ohdera, A. H., Collins, S. M., Shafer, N., Link, C., et al. (2022). Thermal stress has minimal effects on bacterial communities of the thermotolerant symbiodinium cultures. *Front. Ecol. Evol.* 10. doi: 10.3389/fevo.2022.764086
- Doering, T., Maire, J., van Oppen, M. J. H., and Blackall, L. L. (2023). Advancing coral microbiome manipulation to build long-term climate resilience. *Microbiol. Aust.* 44, 36–40. doi: 10.1071/MA23009
- Doering, T., Wall, M., Putschim, L., Rattanawongwan, T., Schroeder, R., Hentschel, U., et al. (2021). Towards enhancing coral heat tolerance: a “microbiome transplantation” treatment using inoculations of homogenized coral tissues. *Microbiome* 9, 102. doi: 10.1186/s40168-021-01053-6
- Dungan, A. M., Bulach, D., Lin, H., van Oppen, M. J. H., and Blackall, L. L. (2021). Development of a free radical scavenging bacterial consortium to mitigate oxidative stress in cnidarians. *Microbial Biotechnol.* 14 (5), 2025–2040. doi: 10.1111/1751-7915.13877
- Dungan, A. M., Hartman, L. M., Lin, H., Blackall, L. L., and van Oppen, M. J. H. (2022). Exploring microbiome engineering as a strategy for improved thermal tolerance in *Exaiptasia diaphana*. *J. Appl. Microbiol.* 132 (4), 2940–2956. doi: 10.1111/jam.15465
- Floegel, A., Dae-Ok, K., Chung, S. J., Koo, S. I., and Chun, O. K. (2011). Comparison of ABTS/DPPH assays to measure antioxidant capacity in popular antioxidant-rich US foods. *J. Food Composition Anal.* 24, 2043–2048. doi: 10.1016/j.jfca.2011.01.008
- Fournier, A. (2013). The story of symbiosis with zooxanthellae, or how they enable their host to thrive in a nutrient poor environment. *Masters Biosci. Rev.*, 1–8.
- Gastwirth, J. L., Gel, Y. R., and Miao, W. (2009). The impact of Levene's test of equality of variances on statistical theory and practice. *Stat. Sci.* 24 (3), 343–360. doi: 10.1214/09-STS301
- Ghasemi, A., and Zahediasl, S. (2012). Normality tests for statistical analysis: A guide for non-statisticians. *Int. J. Endocrinol. Metab.* 10 (2), 486–489. doi: 10.5812/ijem.3505
- González, J. M., et al. (2003). *Silicibacter pomeroyi* sp. nov. and *Roseovarius nubinihibens* sp. nov., dimethylsulfoniopropionate-demethylating bacteria from marine environments. *Int. J. Syst. Evol. Microbiol.* 53 (5): 1261–1269. doi: 10.1099/ijms.0.02491-0
- Hartman, L. M., van Oppen, M. J. H., and Blackall, L. L. (2020). Microbiota characterization of *Exaiptasia diaphana* from the Great Barrier Reef. *Anim. Microbiome* 2. doi: 10.1186/s42523-020-00029-5
- Hughes, T. P., Barnes, M. L., Bellwood, D. R., Cinner, J. E., Cumming, G. S., Jackson, J. B. C., et al. (2017). Coral reefs in the anthropocene. *Nature* 546, 82–90. doi: 10.1038/nature22901
- Jeong, H. J., Yoo, Y. D., Kang, N. S., Lim, A. S., Seong, K. A., Lee, S. Y., et al. (2012). Heterotrophic feeding as a newly identified survival strategy of the dinoflagellate. *Symbiodinium Proc. Natl. Acad. Sci.* 109 (31), 12604–12609. doi: 10.1073/pnas.1204302109
- Keene, O. N. (1995). The log transformation is special. *Stat. Med.* 14:811–819. doi: 10.1002/sim.4780140810
- Lajeunesse, T. C., Parkinson, J. E., Gabrielson, P. W., Jeong, H. J., Reimer, J. D., Voolstra, C. R., et al. (2018). Systematic revision of symbiodiniaceae highlights the antiquity and diversity of coral endosymbionts. *Curr. Biol.* 28 (16), 2570–2580. doi: 10.1016/j.cub.2018.07.008
- Lawson, C. A., Seymour, J. R., Possell, M., Suggett, D. J., and Raina, J. B. (2020). The volatiles of symbiodiniaceae-associated bacteria are influenced by chemical derived from their algal partner. *Front. Mar. Sci.* 7. doi: 10.3389/fmars.2020.00106
- Lesser, M. P., Stochaj, W. R., Tapley, D. W., and Shick, J. M. (1990). Bleaching in coral reef anthozoans: effects of irradiance, ultraviolet radiation, and temperature on the activities of protective enzymes against active oxygen. *Coral Reefs* 8, 225–232. doi: 10.1007/BF00265015
- Lesser, M. P. (1997). Oxidative stress causes coral bleaching during exposure to elevated temperatures. *Coral Reefs* 16, 187–192. doi: 10.1007/s003380050073
- Maire, J., Blackall, L. L., and van Oppen, M. J. H. (2021a). Intracellular bacterial symbionts in corals: challenges and future directions. *Microorganisms* 9 (11), 2209. doi: 10.3390/microorganisms9112209
- Maire, J., Blackall, L. L., and van Oppen, M. J. H. (2021b). Microbiome characterization of defensive tissues in the model anemone *Exaiptasia diaphana*. *BMC Microbiol.* 21, 152. doi: 10.1186/s12866-021-02211-4
- Maire, J., Girvan, S. K., Barkla, S. E., Perez-Gonzalez, A., Suggett, D. J., Blackall, L. L., et al. (2021c). Intracellular bacteria are common and taxonomically diverse in cultured and in hospite algal endosymbionts of coral reefs. *ISME J.* 15, 2028–2042. doi: 10.1038/s41396-021-00902-4
- Maire, J., and van Oppen, M. J. H. (2021). A role for bacterial experimental evolution in coral bleaching mitigation? *Trends Microbiol.* 30 (3), 217–228. doi: 10.1016/j.tim.2021.07.006
- Matthews, J. L., Raina, J. B., Kahlke, T., Seymour, J. R., van Oppen, M. J. H., and Suggett, D. J. (2020). Symbiodiniaceae-bacteria interactions: rethinking metabolite exchange in reef-building corals as multi-partner metabolic networks. *Environ. Microbiol.* 22, 1675. doi: 10.1111/1462-2920.14918
- McMurdie, P. J., and Holmes, S. (2013). phyloseq: An R package for reproducible interactive analysis and graphics of microbiome census data. *PLoS One* 8 (4), e61217. doi: 10.1371/journal.pone.0061217
- Mehler, A. H. (1951). Studies on reactions of illuminated chloroplasts. I. Mechanism of the reduction of oxygen and other hill reagents. *Arch. Biochem. Biophys.* 33 (1), 65–77. doi: 10.1016/0003-9861(51)90082-3
- Miller, T., and Belas, R. (2004). Dimethylsulfoniopropionate metabolism by *Pfiesteria*-associated *Roseobacter* spp. *Appl. Environ. Microbiol.* 70 (6), 3383–3391. doi: 10.1128/AEM.70.6.3383-3391.2004
- Motone, K., Takagi, T., Aburaya, S., Miura, N., Aoki, W., and Ueda, M. (2020). A zeaxanthin-producing bacterium isolated from the algal phycosphere protects coral endosymbionts from environmental stress. *mBio* 11, e01019–e01019. doi: 10.1128/mBio.01019-19
- Munday, P. L. (2004). Habitat loss, resource specialization, and extinction on coral reefs. *Global Change Biol.* 10 (10), 1642–1647. doi: 10.1111/j.1365-2486.2004.00839.x
- Peixoto, R. S., Sweet, M., Villela, H. D. M., Cardoso, P., Thomas, T., Voolstra, C. R., et al. (2021). Coral probiotics: premise, promise, prospects. *Annu. Rev. Anim. Biosci.* 9, 265–288. doi: 10.1146/annurev-animal-090120-115444
- Pootakham, W., Mhuantong, W., Yoocha, T., Putschim, L., Jomchai, N., Sonthirod, C., et al. (2019). Heat-induced shift in coral microbiome reveals several members of the Rhodobacteraceae family as indicator species for thermal stress in *Porites lutea*. *MicrobiologyOpen* 8 (12), e935. doi: 10.1002/mbo3.935
- Randle, J. L., Cárdenas, A., Gegner, H. M., Ziegler, M., and Voolstra, C. R. (2020). Salinity-conveyed thermotolerance in the coral model *Aiptasia* is accompanied by distinct changes of the bacterial microbiome. *Front. Mar. Sci.* 7. doi: 10.3389/fmars.2020.573635
- Richter, M., Ruhle, W., and Wild, A. (1990). Studies on the mechanism of photosystem II photoinhibition II. The involvement of toxic oxygen species. *Photosynthesis Res.* 24, 237–243. doi: 10.1007/BF00032311
- Ritchie, K. B. (2012). “Bacterial symbionts of corals and *Symbiodinium*,” in *Beneficial Microorganisms in Multicellular Life Forms*. Eds. E. Rosenberg and U. Gophna (Berlin, Heidelberg: Springer), 136–150.
- Rosado, P. M., Leite, D. C. A., Duarte, G. A. S., Chaloub, R. M., Jospin, G., Nunes da Rocha, U., et al. (2019). Marine probiotics: increasing coral resistance to bleaching through microbiome manipulation. *ISME J.* 13 (4), 921–936. doi: 10.1038/s41396-018-0323-6
- Santoro, E. P., Borges, R. M., Espinoza, J. L., Freire, M., Messias, C. S. M. A., Villela, H. D. M., et al. (2021). Coral microbiome manipulation elicits metabolic and genetic

- restructuring to mitigate heat stress and evade mortality. *Sci. Adv.* 7 (33), eabg3088. doi: 10.1126/sciadv.abg308
- Suggett, D. J., and Smith, D. J. (2019). Coral bleaching patterns are the outcome of complex biological and environmental networking. *Global Change Biol.* 26 (1), 68–79. doi: 10.1111/gcb.14871
- Sunda, W., Kieber, D. J., Kiene, R. P., and Huntsman, S. (2002). An antioxidant function for DMSP and DMS in marine algae. *Nature* 418, 317–320. doi: 10.1038/nature00851
- Szabó, M., Larkum, A. W. D., and Vass, I. (2020). “A review: the role of reactive oxygen species in mass coral bleaching,” in *Photosynthesis in Algae: Biochemical and Physiological Mechanisms*, vol. 45. Eds. A. Larkum, A. Grossman and J. Raven (Cham: Springer).
- Tortorelli, G., Belderok, R., Davy, S. K., McFadden, G. I., and van Oppen, M. J. H. (2020). Host genotypic effect on algal symbiosis establishment in the coral model, the anemone *Exaiptasia diaphana*, from the great barrier reef. *Front. Mar. Sci.* 6. doi: 10.3389/fmars.2019.00833
- van Oppen, M. J. H., and Blackall, L. L. (2019). Coral microbiome dynamics, functions and design in a changing world. *Nat. Rev. Microbiol.* 17, 557–567. doi: 10.1038/s41579-019-0223-4
- van Oppen, M. J. H., Oliver, J. K., Putnam, H. M., and Gates, R. D. (2015). Building coral reef resilience through assisted evolution. *Proc. Natl. Acad. Sci.* 112 (8):2307–2313. doi: 10.1073/pnas.1422301112
- Volkmer, B., and Heinemann, M. (2011). Condition-dependent cell volume and concentration of *Escherichia coli* to facilitate data conversion for systems biology modeling. *PLoS One* 6 (7):e23126. doi: 10.1371/journal.pone.0023126
- Weis, V. M. (2008). Cellular mechanisms of Cnidarian bleaching: stress causes the collapse of symbiosis. *J. Exp. Biol.* 211, 3059–3066. doi: 10.1242/jeb.009597
- Wilson, K., Li, Y., Whan, V., Lehnert, S., Byrne, K., Moore, S., et al. (2002). Genetic mapping of the black tiger shrimp *Penaeus monodon* with amplified fragment length polymorphism. *Aquaculture* 204, 297–309. doi: 10.1016/S0044-8486(01)00842-0
- Xiang, T., Hambleton, E. A., DeNofrio, J. C., Pringle, J. R., and Grossman, A. R. (2013). Isolation of clonal axenic strains of the symbiotic dinoflagellate *Symbiodinium* and their growth and host specificity. *J. Phycol.* 49 (3), 447–458. doi: 10.1111/jpy.12055
- Yellowlees, D., Rees, T. A. V., and Leggat, W. (2008). Metabolic interactions between algal symbionts and invertebrate hosts. *Plant Cell Environ.* 31, 679–694. doi: 10.1111/j.1365-3040.2008.01802.x
- Yoch, D. C. (2002). Dimethylsulfoniopropionate: its sources, role in the marine food web, and biological degradation to dimethylsulfide. *Appl. Environ. Microbiol.* 68, 5804–5815. doi: 10.1128/AEM.68.12.5804-5815.2002
- Zhang, Y., Yang, Q., Ling, J., Long, L., Huang, H., Yin, J., et al. (2021). Shifting the microbiome of a coral holobiont and improving host physiology by inoculation with a potentially beneficial bacterial consortium. *BMC Microbiol.* 21, 130. doi: 10.1186/s12866-021-02167-5