



Soil Mesofauna Community Changes in Response to the Environmental Gradients of Urbanization in Guangzhou City

Shiqin Yu^{1,2,3}, Junliang Qiu¹, Xiaohua Chen¹, Xiaofeng Luo¹, Xiankun Yang^{1,2,3}, Faming Wang⁴ and Guoliang Xu^{1,2,3*}

¹ School of Geography and Remote Sensing, Guangzhou University, Guangzhou, China, ² Rural Non-point Source Pollution Comprehensive Management Technology Center of Guangdong Province, Guangzhou, China, ³ Centre for Climate and Environmental Changes, Guangzhou University, Guangzhou, China, ⁴ The CAS engineering Laboratory for Ecological Restoration of Island and Coastal Ecosystems, South China Botanical Garden, Chinese Academy of Sciences, Guangzhou, China

OPEN ACCESS

Edited by:

Meng Yao,
Peking University, China

Reviewed by:

Rakesh Bhutiani,
Gurukula Kangri Vishwavidyalaya,
India
Tibor Magura,
University of Debrecen, Hungary

*Correspondence:

Guoliang Xu
xugl@gzhu.edu.cn

Specialty section:

This article was submitted to
Biogeography and Macroecology,
a section of the journal
Frontiers in Ecology and Evolution

Received: 28 March 2020

Accepted: 08 December 2020

Published: 14 January 2021

Citation:

Yu S, Qiu J, Chen X, Luo X, Yang X, Wang F and Xu G (2021) Soil Mesofauna Community Changes in Response to the Environmental Gradients of Urbanization in Guangzhou City. *Front. Ecol. Evol.* 8:546433. doi: 10.3389/fevo.2020.546433

There has been a recent increase in interest on how urbanization affects soil fauna communities. However, previous studies primarily focused on some limited land use types or line transects of urban-rural gradients. At family and higher taxonomic levels, we investigated the changes of soil mesofauna communities (abundance, species richness, and community structure) with urbanization intensity along different disturbance features in 47 sites evenly located in downtown Guangzhou and adjacent regions. The 47 research sites were classified into four ecosystem types mainly according to the location (rural/urban), vegetation cover, and management intensity. In turn, the four types with increasing urbanization intensity were rural forest, urban forest, urban woodland, and urban park. Firstly, the role of urban soil property (soil physicochemical characteristic and soil heavy metal content) in regulating soil mesofauna community was investigated. The results showed that soil mesofauna abundance and diversity decreased with increasing soil pH, total nitrogen content (TN), and heavy metal comprehensive index (CPI). Soil Pb decreased soil mesofauna species richness (taxa number) and regulated soil mesofauna community structure. Secondly, we examined the effects of landscape changes on the soil mesofauna community. We found impervious surface (IS) ratio did not predict changes in soil mesofauna abundance, species richness, or community structure. Instead, IS ratio was positively correlated with soil pH, soil TN, and CPI. After excluding sites that belonged to rural forests and urban parks, site area was positively correlated with soil mesofauna abundance. Thirdly, our results revealed significant differences in soil property, landscape trait, and soil mesofauna community among the four ecosystem types. Interestingly, urban forest, the one lightly disturbed by urbanization, but not rural forest, had the highest soil mesofauna abundance. Soil mesofauna abundance in urban woodlands was similar to that in urban parks, which was about half of that in urban forests. Species richness in urban parks was 21% lower than that in rural forests. Our results also showed that urban woodland and urban parks had distinct mesofauna community structures compared to those in rural forests and urban forests. In conclusion, the present study suggested that (1) soil property changes due to urbanization, such as increased pH and heavy metal enrichment in urban soil, decreased

soil mesofauna abundance and species richness, changed community structure, and mediated the effect of landscape change on soil mesofauna community; (2) however, soil and landscape changes could not explain the increase of abundance in urban forests, which supported the intermediate disturbance hypothesis.

Keywords: urban biodiversity, soil diversity, land use change, soil invertebrate, soil heavy metal

INTRODUCTION

Urbanization has a tremendous effect on the economy and environment in the modern world. Habitat loss and fragmentation, land use change, environmental pollution, and anthropogenic interruption during the urbanization process has caused biodiversity declines in mammals, birds, and amphibians (McKinney, 2006, 2008; Diego Ibanez-Alamo et al., 2017). Soil mesofauna, such as collembola and mite, can exert substantial effects on soil fundamental functions (Wolters, 2001; Bardgett and van der Putten, 2014). As a result, it is important to know how a soil mesofauna community would respond to the environmental changes induced by urbanization.

Urbanization always proceeds with enormous land use type change, which may be the strongest factor influencing soil fauna communities. Many previous studies investigated the urbanization effects on soil fauna by comparing communities among urban ecosystems of different land use types. In Phoenix, the soil arthropod community is significantly different among residential, industrial, agricultural, and desert remnants, especially when springtails, ants, and mites are excluded from the analysis (McIntyre et al., 2001). In a semi-arid city, Ge et al. (2019) showed that urban lawn soils have lower soil invertebrate evenness and diversity, but higher density than remnant patches of native coastal sage scrub. Joimel et al. (2018) investigated collembola communities in both extensive and productive green roofs, and found no differences in collembola taxonomic structures. However, it is not easy to know exactly which environmental factors shape a soil fauna community from such studies, because most environmental conditions vary dramatically and inconsistently among land use types.

More and more studies have begun to investigate the soil fauna response to a specific agent of urban environmental change. Soil in a city is sometime called “man-made soil,” because it is somehow re-created during city construction and residential daily lives (Gilbert, 1989). During the re-creation, man-made materials, such as broken bricks, glass and china, kitchen refuse, fertilizer, and so on, are mixed into urban soils, which result in a widely reported elevated soil pH (Jim, 1998; Pouyat et al., 2015; Asabere et al., 2018), increased soil nutrients (Pouyat et al., 2002; Trammell et al., 2020), and heavy metal accumulation (Wei and Yang, 2010). In urban green spaces under management, removal of aboveground litter, application of fertilizer and irrigation, and so on may also substantially change soil characteristics (Norton, 2011; Mao et al., 2014; Tresch et al., 2018, 2019).

Many efforts have been made to reveal the relationship between heavy metal and soil fauna. It is reasonable that soil fauna will be inhibited by heavy metal, which has been widely reported

in ecotoxicological tests in lab incubations (Crommentuijn et al., 1993; Didden and Rombke, 2001; Herbert et al., 2004). However, there is no consensus in field studies. While some field studies found heavy metal in urban soils decrease soil fauna abundance and richness (Fiera, 2009; Santorufo et al., 2012), other studies showed contrary results (Fountain and Hopkin, 2004; Joimel et al., 2017; Milano et al., 2018; Sterzynska et al., 2018). In contrast, there are only a few studies exploring the relationships between soil fauna communities and other soil characteristics in urban ecosystems. In the city of Warsaw, Rzeszowski et al. (2017) found that factors contributing to significant collembola communities' variation are soil potassium and phosphorus concentrations and soil pH, whereas soil nitrogen and carbon do not have significant effects. In the Beijing Olympic Park, Song et al. (2015) also showed that there are significant correlations between soil physicochemical property and the soil mesofauna community. However, due to the limited number of studies, it is not clear that whether such relationships widely exist in different urban soils.

Most urban ecosystems are embedded within human construction and are of a small area with a large ratio of girth to area (Bradshaw, 2003; Hruska, 2006), which is typical of fragmented habitats. Such landscape characteristics could affect individual and gene exchanges, thus shaping the process of community construction (LaPoint et al., 2015; Lepczyk et al., 2017). Studies on aboveground organisms suggested that habitat area, connectivity, and landscape diversity are important in determining organism community composition and structure (Faeth et al., 2011; Braaker et al., 2014, 2017, Burrow, 2018). In contrast, studies on urban soil fauna seldom take landscape features into account (but see Bolger et al., 2000; Milano et al., 2018; Xie et al., 2018). A recent systematic review suggests that the underlying mechanisms regulating soil organisms may be inconsistent with those generated from studies on aboveground organisms (Thakur et al., 2019). As a result, it remains unclear whether landscape features could have significant effects on soil fauna community.

Some previous studies found species within a family or even a genus could have different capacities to resist environmental stress as a result of their different functions and physical traits (Magura et al., 2010; Santorufo et al., 2014). However, taxonomic analyses at a species level in soil fauna is expensive, both in terms of equipment and time. In recent years, many studies found it is realizable to indicate soil environmental changes at family or higher taxonomic levels (Parisi et al., 2005; Santorufo et al., 2012; Menta et al., 2018). These studies hypothesize that soil fauna within a higher taxonomic (family or order, etc.) level have similar capabilities to adapt to soil environmental changes, which was supported by many studies, especially in natural grassland

(Madej and Kozub, 2014), farmland (Rudisser et al., 2015), and degraded soils Madej and Kozub (2014).

In the present study, we made soil and soil mesofauna samples in 47 sites evenly located in the downtown of Guangzhou city and adjacent regions, representing urban soil ecosystems of different soil physicochemical properties, soil heavy metal pollution degree, and landscape trait. Our main objective was to advance the knowledge on the effect of specific urbanization agents on soil mesofauna abundance, diversity, and community structure at family and higher taxonomic levels.

MATERIALS AND METHODS

Study Area and Sample Design

The city of Guangzhou ($22^{\circ}26' - 23^{\circ}56'N$ and $112^{\circ}57' - 114^{\circ}03'E$) is the capital of Guangdong province in South China. The soil type in natural ecosystems in Guangzhou is latosolic red soil. The climate in Guangzhou is a subtropical, marine monsoon climate with an annual average temperature of $21.5-22.2^{\circ}C$ and an annual average precipitation of $1,623.6-1,899.8$ mm. Guangzhou has an annual average number of 149.2 rainy days, with most rainy days occurring during April to October. Typically, July is the hottest month with a mean temperature of $28.6^{\circ}C$, and January is the coldest with a mean temperature of $13.6^{\circ}C$.

To establish representative sites distributed evenly in the downtown of Guangzhou city and adjacent regions, we made preliminary selections of urban ecosystems in online satellite images along (but not closed to) the arterial roads across the study area. At first, 55 sites were chosen on the satellite images. After that, we went to each potential site to discriminate whether the site met our standards. In this procedure, sites that could not be reached or with newly translocated soils or newly planted plants were excluded. At last, 47 sites were established in the study area (Figure 1).

The 47 sites were classified into four ecosystem types according to the location, vegetation cover, amount of anthropogenic solid waste, dominant plant type, and management intensity (Table 1). The four typical ecosystem types with increasing urban disturbance intensity are rural forest (8 sites), urban forest (16 sites), urban woodland (13 sites), and urban park (10 sites). A rural forest site was always located in a consecutive forest and far from the city's infrastructure (such as roads and building), while an urban forest site was surrounded by human construction and isolated from other soil ecosystems. However, the urban forests were usually located on hills, thus only suffering mild human disturbances. Both the rural and urban forests were broadleaf evergreen forests and had high vegetation covers ($>80\%$). The dominant plants in the rural forest and urban forest were native or/and alien trees. An urban woodland site was usually small and close to city construction. As a result, the soils in urban woodland were heavily polluted by solid anthropic wastes (such as plastic, wire, paper, brick, clothes, and so on), indicating a strong human disturbance. The dominant plants in urban woodlands were street trees or/and garden shrubs. There were only sparse and young plants in

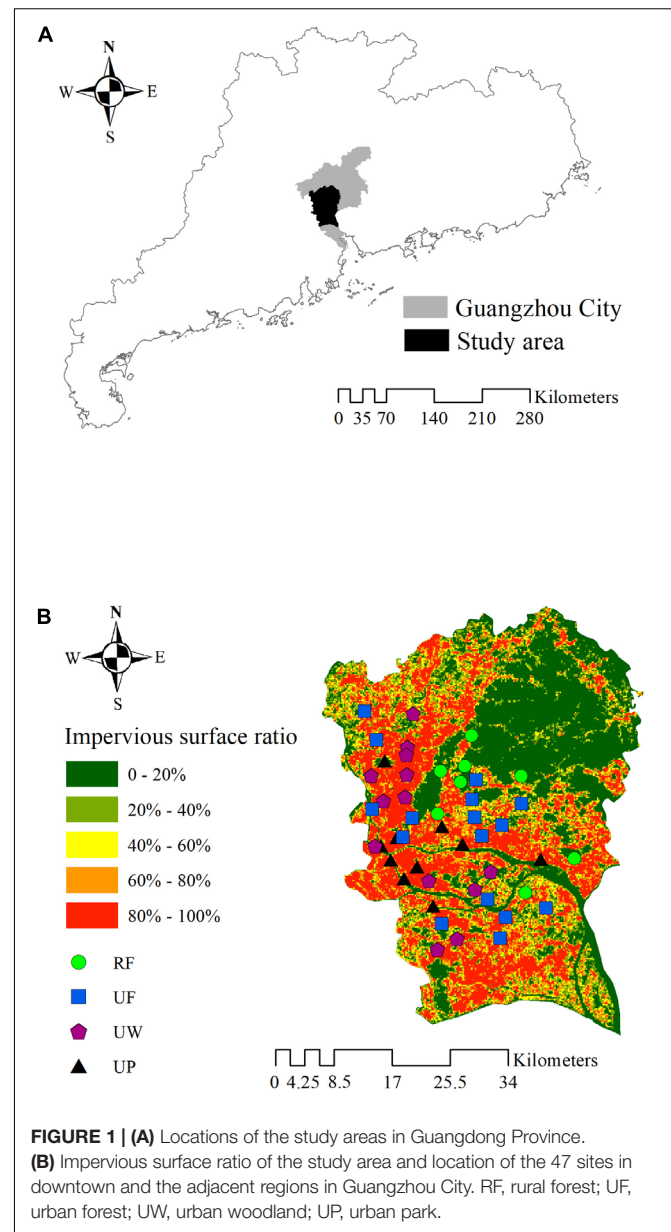


FIGURE 1 | (A) Locations of the study areas in Guangdong Province. **(B)** Impervious surface ratio of the study area and location of the 47 sites in downtown and the adjacent regions in Guangzhou City. RF, rural forest; UF, urban forest; UW, urban woodland; UP, urban park.

the urban woodlands, and thus with lower vegetation cover. The dominant plants in urban parks were similar to those in the urban woodlands. However, urban parks were managed ecosystems. The vegetation in the urban parks were pruned, watered and fertilized, and the aboveground plant litter was removed for sanitization. The soils may be turned over, and solid wastes polluted.

Soil Mesofauna Collection and Identification

From October 2018 to December 2018, we sampled soil mesofauna in the study area once for each site. At each site, a transect including three 5×5 m² sub-plots separated by 10 m was established. In each sub-plot, three soil cores were randomly

TABLE 1 | Characteristics of rural forest (RF), urban forest (UF), urban woodland (UW), and urban park (UP).

	Location	Vegetation cover	Anthropogenic wastes	Dominant plant type	Management
RF	Rural	>80%	No	Native or/and alien trees	No
UF	Urban	>80%	Little	Native or/and alien trees	No
UW	Urban	<50%	Much	Street trees or/and garden shrubs	No
UP	Urban	–	Little	Street trees or/and garden shrubs	Yes

taken from surface soil (0–10 m) with a steel corer (5 cm inner diameter) to generate a soil sample for soil mesofauna extraction. Therefore, we collected three samples per site. Immediately after collection, the samples were transported to our laboratory, and soil collembola and mites were extracted using Tullgren dry funnels for 48 h. All specimens were sorted and counted and examined with an Olympus BX41 research microscope (Olympus, Tokyo, Japan). The mites were allocated to three groups, namely Mesostigmata, Oribatida, and Prostigmata, while the collembola were grouped according to family and others to order or class, mainly according to Yin (1998).

At each site, soil mesofauna abundance (number of soil mesofauna per m²) and species richness (total number of taxa, S) were recorded and used to calculate Shannon diversity index as (Shannon, 1948):

$$H = -\sum P_i \log_2 P_i$$

where P_i is the ratio between the abundance of species i and the total soil mesofauna abundance. Evenness (J) was evaluated according to the Pielou index (Pielou, 1969):

$$J = H/\log_2 S$$

Soil Properties Analysis

At each transect, another three soil samples were taken using a steel corer (3 cm inner diameter) to generate a soil sample to test for soil physicochemical properties and heavy metal levels. Apart from five polluted samples, we assessed soil pH, soil organic matter (SOM), and soil total nitrogen (TN) for each site. Soil pH was measured using a 1: 2.5 soil: water suspension with the potentiometric method. SOM was determined using H₂SO₄-K₂Cr₂O₇ oxidation method. Soil TN was quantified by the Kjeldahl acid digestion method. Heavy metal concentration (Zn, Cu, Cd, and Pb) was analyzed after digestion in a mixture of nitric, perchloric acid, and hydrogen peroxide. Soil heavy metal comprehensive index (CPI) was calculated as (Li et al., 2008):

$$M_i = C_i/S_i$$

and,

$$CPI = \sqrt{\frac{(\frac{1}{n} \sum_{i=1}^n M_i)^2 + [\max(M_i)]^2}{2}}$$

where M_i is the pollution index of heavy metal i ; C_i (mg kg⁻¹) is the measured heavy metal i ; S_i (mg kg⁻¹) is the environmental background value of Guangzhou City (Zhou et al., 2009); and CPI is the comprehensive pollution index.

Assessments of Impervious Surface and Site Area

Land cover information was generated from a set of global 10-m resolution land cover map from Sentinel 2 images via the Google Earth Engine. Buildings and pavements were classified into impervious surface (IS). Circular buffers at radiuses of 200, 500, and 1000 m were established for each site with the site as circle center. After that, IS ratios of each circle buffer were calculated. The IS ratio at a radius of 500 m was chosen for the next analyses because it had higher correlation coefficients with soil property and soil mesofauna parameter in Pearson's correlation analysis (**Supplementary Table 1**). In addition, to show the overall view of the IS ratio of the study area, the original map of land cover was transformed to a map of geographic grid cells at 500 m. The IS ratio in each grid cell was calculated, respectively, and visualized in **Figure 1**. The area of each site was measured in the LocalSpaceViewer 4.0 using Google Earth Map. The area reported in this study did not include those of consecutive rural forest sites, because they were part of consecutive forests. In addition, the areas of urban park sites were not reported in the present study, because internal impervious pavements in urban parks could not be distinguished in the map.

Statistical Analysis

For all analyses, values from three soil samples (sub-plots) in a site were averaged and treated as a single replicate per site ($N = 47$ for soil mesofauna parameters, $N = 42$ for soil properties). Data were square-rooted or log transformed to fulfill the hypothesis of normality and homogeneity. We plotted scatter plots and conducted Pearson's correlation to examine the relationship among landscape trait (IS ratio and site area), soil property (pH, SOM, TN and soil total Zn, Cu, Cd, Pb, CPI), and soil mesofauna community parameter (abundance, richness, Shannon's index, and Pielou's index). After that, according to the result of Pearson's correlation, linear regression was used to determine the variation of each soil mesofauna parameter along each soil property and landscape trait. We used one-way ANOVA to examine the differences in landscape trait, soil property, and soil mesofauna parameter among the four ecosystem types with different urbanization intensities. Least significance difference (LSD) was used after the ANOVA to test the differences between any two ecosystem types. Pearson's correlation, one-way ANOVA, and regression analysis were conducted in SPSS 19.0 (SPSS, Chicago, IL, United States).

To visualize the soil mesofauna community pattern, we performed ordination on community composition with non-metric multidimensional scaling (NMDS). Chao method was

chosen because of the unbalanced replicates among ecosystem types (Anderson and Millar, 2004). To this end, environmental variables were fitted on this NMDS space. A permutational multivariate analysis of variance (PERMANOVA) was conducted to test the significance of each environmental variable. We also used PERMANOVA to quantitatively examine the difference in soil mesofauna community among ecosystem types using a Chao dissimilarity matrix. The PERMANOVA and NMDS were conducted using Vegan in R 3.6.1. Significance level was set at $\alpha = 0.050$.

RESULTS

Effects of Urban Soil Property Changes on Soil Mesofauna Abundance and Diversity

There were significant negative relationships between soil properties and soil mesofauna abundance/diversity (Figure 2). Total soil mesofauna abundance was negatively correlated with soil pH ($R^2 = 0.218$, $p = 0.001$) and heavy metal CPI ($R^2 = 0.092$, $p = 0.028$) across the 42 sites. Species richness also responded negatively with soil pH ($R^2 = 0.104$, $p = 0.021$) and CPI ($R^2 = 0.115$, $p = 0.028$). In addition, we found Shannon's index decreased as soil TN ($R^2 = 0.099$, $p = 0.042$) and Soil Pb concentration ($R^2 = 0.145$, $p = 0.007$) increased.

Effects of Urban Landscape Changes on Soil Mesofauna Abundance, Diversity, and Soil Property

Impervious surface ratio was not significantly correlated with any soil mesofauna parameters (Supplementary Table 3). In contrast, both soil pH ($R^2 = 0.255$, $p < 0.001$) and soil total nitrogen ($R^2 = 0.180$, $p = 0.005$) were positively correlated with IS ratio (Figure 3). Heavy metal CPI also increased with IS ratio ($R^2 = 0.119$, $p = 0.026$). In addition, as the Pearson's correlation analysis showed, soil total Zn, Cu, and Cd were significantly positively correlated with IS ratio (Supplementary Table 3).

After excluding the sites belonging to rural forests and urban parks, soil mesofauna abundance was positively correlated with site area ($R^2 = 0.259$, $p = 0.002$) (Figure 4). Both soil pH ($R^2 = 0.288$, $p = 0.005$) and heavy metal CPI ($R^2 = 0.358$, $p = 0.002$) were negatively correlated with site area (Figure 4). In addition, soil mite and collembola abundance significantly increased with site area, while total soil Zn, Cu, and Cd were significantly negatively correlated with site area (Supplementary Table 3). There were no significant correlations between soil mesofauna diversity and site area (Supplementary Table 3).

Soil Property, Landscape Trait, and Soil Mesofauna Abundance and Diversity in Rural Forest, Urban Forest, Urban Woodland, and Urban Park

All measured landscape and soil property variables varied significantly among the four ecosystem types (all $p < 0.031$),

except the SOM and total soil Pb. Impervious surface ratio, site area, soil pH, TN, total soil Zn, Cu, Cd, and CPI increased from rural forest, urban forest, urban woodland, to urban park (Table 2).

Soil mesofauna abundance in urban forests was the largest in the four ecosystem types (Figure 5). Rural forest had the second largest soil mesofauna abundance. Soil mesofauna abundance in urban woodland were similar to those in urban parks, which were only about half of that in urban forests. Specifically, total soil mesofauna abundance in the four ecosystem types were $76,076 \pm 10,848$, $98,156 \pm 9,299$, $51,341 \pm 5,748$, and $50,768 \pm 4,985$ ind. m^{-2} , respectively. The total soil mesofauna abundance in urban forests was significantly higher than those in urban woodland ($p < 0.001$) and urban parks ($p < 0.001$), and 20% higher than that in rural forests ($p = 0.080$).

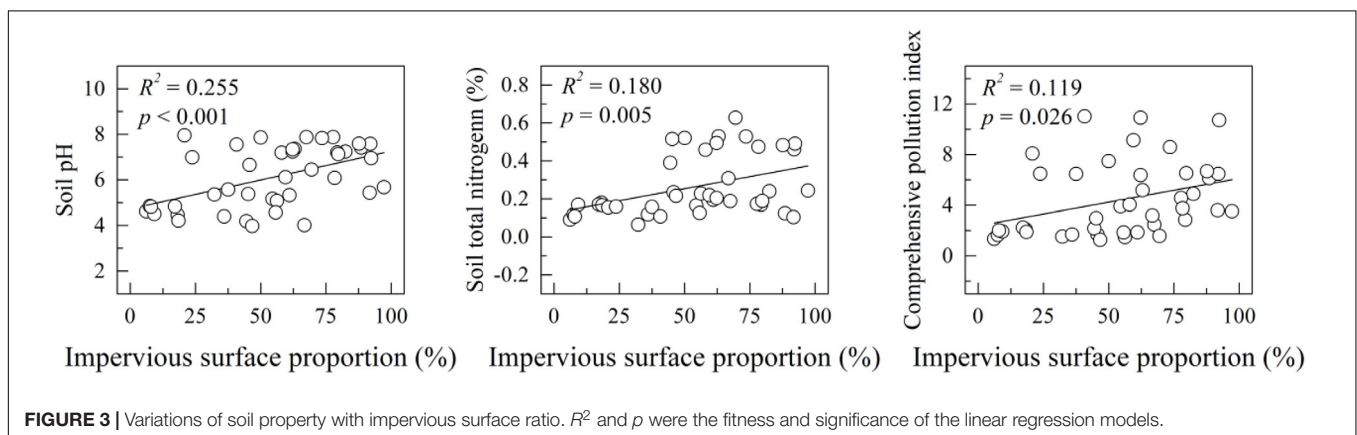
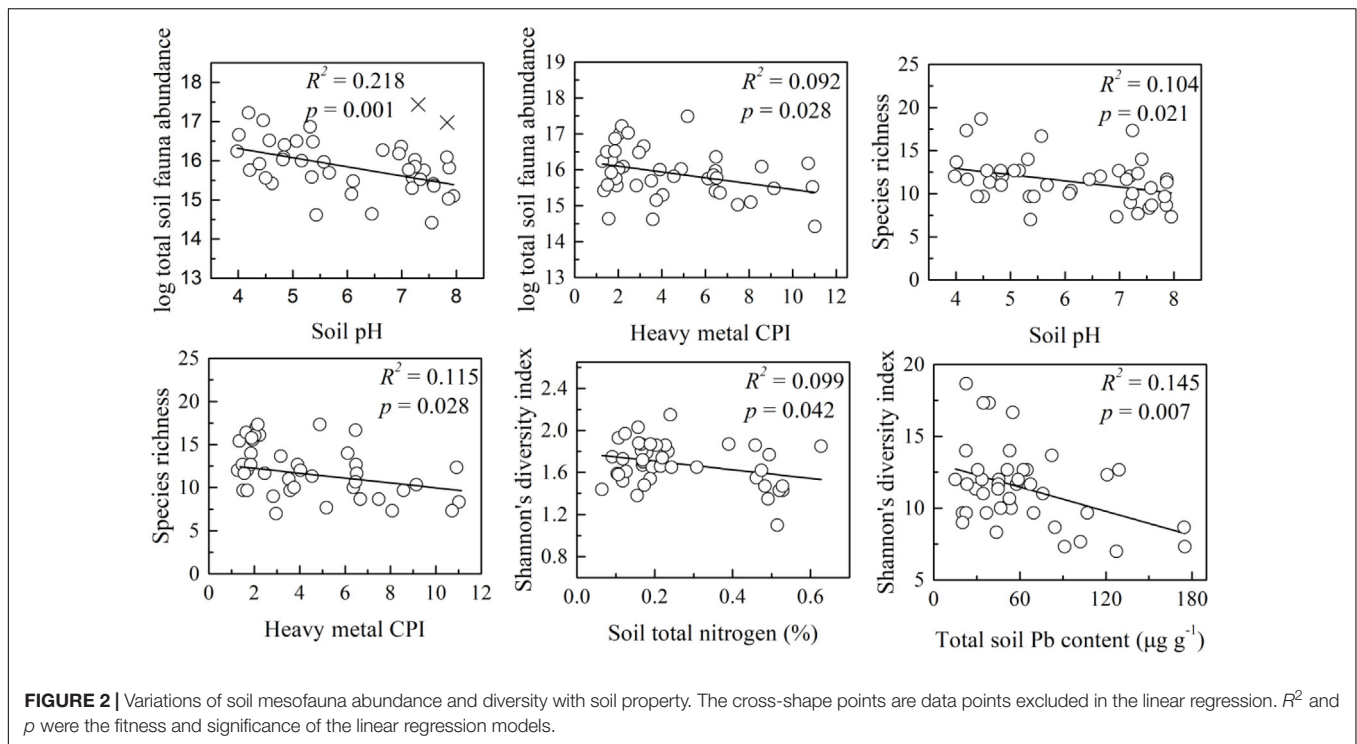
Effects of Urbanization on Soil Mesofauna Community Structure

Differences in mesofauna community structure among sampling sites were visualized with a non-metric multidimensional scaling (NMDS) (Figure 6). In addition, soil mesofauna community structure among the four ecosystem types were significantly different ($p = 0.036$) (Table 3). Except for the difference between rural forest and urban forest, differences between any two ecosystem types were significant (all $p \leq 0.033$). The results of permutational multivariate analysis of variance showed that only soil total Pb concentration was significant in explaining the variation of soil mesofauna community structure ($R^2 = 0.174$, $p = 0.036$) (Supplementary Table 4).

DISCUSSION

Soil Property Regulated Soil Mesofauna Abundance and Diversity in Urban Soils

Most soil pH values in the study area were higher than those of natural forests in this region (Supplementary Table 2; Liu et al., 2010). It is well known that soil alkalization can induce destruction in soil physical structure, which may decrease soil mesofauna abundance and diversity. Less clear is why soil mesofauna abundance and diversity decreased with increased soil pH at a lower range in urban soils as in the present study. In natural grassland, decrease in soil pH from 7.57 to 4.76 depresses soil nematode abundance by decreasing soil base cation availability and soil microbial biomass (Chen et al., 2015). In a study on mineral-poor dry heathlands, an increase in soil pH from 3.50 to 4.13 under liming treatments alleviates P limitation, thus increasing micro-arthropod abundance (mite and collembola) (Siepel et al., 2018). In the city of Warsaw, an increase in soil pH associated with lower concentrations of potassium and phosphorus depressed some collembola genus, thus changing soil collembola community structure (Rzeszowski et al., 2017). These studies may indicate that, besides physical structure, the effects of changed soil pH on an urban soil mesofauna community could be mediated by soil nutrient availability.



Compared to geogenic heavy metal concentrations in the city of Guangzhou (Zhou et al., 2009), most of the sampling sites had higher heavy metal contents (**Supplementary Table 2**). Toxicological evidence has been widely reported showing that high soil heavy metal concentration can induce soil fauna death in laboratory conditions, especially for collembola and enchytraeid (Crommentuijn et al., 1993; Didden and Rombke, 2001; Herbert et al., 2004). In urban field studies, there is still much controversy on whether accumulated heavy metal in soils could significantly inhibit soil mesofauna or change the community structure (Fountain and Hopkin, 2004; Fiera, 2009; Santorufo et al., 2012; Sterzynska et al., 2018). In ecosystems other than urban ecosystems, most of the controversy could result from the taxon-specific resistance to heavy metal toxicity. For example, in a grassland contaminated by Zn, while abundance of most

soil fauna decreased, abundance of coleoptera and arachnida increased (Nahmani and Lavelle, 2002). In a shooting range with Pb and Sb 20 times higher than the surrounding soils, while total abundance and richness of soil mesofauna does not significantly change in the polluted soils, diplura and protura seem to benefit from heavy metal pollution, as they only occurred in soils of the shooting range (Migliorini et al., 2004). In the present field study, at family and higher taxonomic levels, our results suggested that heavy metals that accumulated in urban soils may be an important factor regulating soil mesofauna abundance, richness, diversity, and community structure. Moreover, our result indicated that comprehensive heavy metal pollution degree was more important in regulating soil mesofauna abundance and species richness than any single heavy metal, while soil Pb content seemed to be a key factor influencing soil mesofauna biodiversity

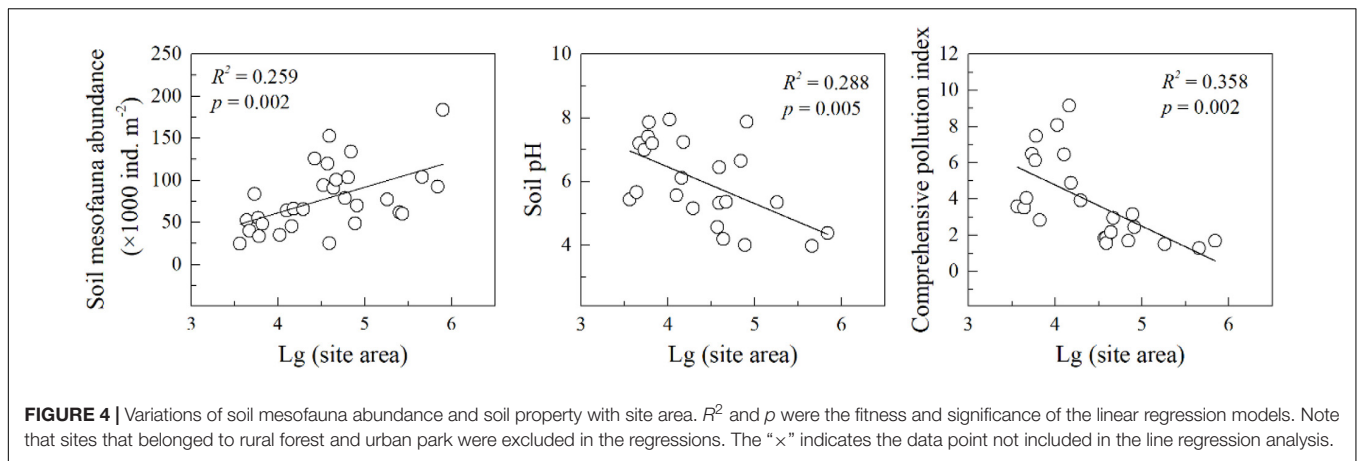


FIGURE 4 | Variations of soil mesofauna abundance and soil property with site area. R^2 and p were the fitness and significance of the linear regression models. Note that sites that belonged to rural forest and urban park were excluded in the regressions. The “x” indicates the data point not included in the line regression analysis.

TABLE 2 | Mean values (SE) of landscape trait and soil property in rural forest (RF), urban forest (UF), urban woodland (UW), and urban park (UP).

	RF	UF	UW	UP
IS ratio (%)	14.3 (2.9)c	55.8 (3.4)b	61.8 (7.1)ab	74.7 (5.0)a
Site area (ha)	—	17.1 (5.9)a	1.23 (0.4)b	—
pH	4.61 (0.09)b	5.33 (0.38)b	6.65 (0.26)a	7.32 (0.17)a
SOM (%)	2.43 (0.34)a	3.64 (0.93)a	4.15 (0.69)a	3.01 (0.78)a
TN (%)	0.143 (0.014)c	0.230 (0.037)bc	0.284 (0.050)ab	0.360 (0.053)a
Zn (μg/g)	43.72 (7.91)c	55.55 (9.79)c	101.08 (13.88)b	176.83 (22.01)a
Cu (μg/g)	13.62 (2.42)b	16.09 (2.49)b	37.48 (6.36)a	43.31 (7.21)a
Pb (μg/g)	44.40 (6.81)a	60.22 (8.98)a	71.51 (14.55)a	71.28 (8.84)a
Cd (μg/g)	0.166 (0.044)c	0.251 (0.051)bc	0.362 (0.048)b	0.542 (0.060)a
CPI	2.45 (0.58)c	3.62 (0.70)bc	5.17 (0.64)b	7.56 (0.83)a

The letters indicate significant differences at the level of $\alpha = 0.050$ among different ecosystem types. IS ratio, impervious surface ratio; SOM, soil organic matter content; TN, soil total nitrogen content; Zn, Cu, Pb, Cd, soil total Zn, Cu, Pb and Cd concentration, respectively; CPI, heavy metal comprehensive index.

and community structure. That is, soil mesofauna may respond differently to different soil heavy metal species/heavy metal index. Consistent with our result, Santorufo et al. (2012) found collembola abundance is negatively correlated with soil Pb and Zn concentration, but is not sensitive to Cu. A study on oribatida inhabiting leaf litter suggested that the oribatida community structure is regulated by litter Cd but not Zn, Pb, or Cu (Khalil et al., 2009).

Landscape Change Effects on Soil Mesofauna Community Were Mostly Mediated by Soil Property

Impervious surface (IS) ratio is a direct and important index indicating urbanization intensity (Seress et al., 2014). In stream ecology studies, total impervious area is thought to be an excellent surrogate variable summarizing the effect of variables associated with urban stream syndrome (Walsh et al., 2005; King and Baker, 2010). However, the present study did not find a significant relationship between soil mesofauna community and IS in urban soils, as some previous studies did (Fogaca et al., 2013; Cordonnier et al., 2019). A study conducted in French cities showed that the dependence of ants on IS ratio varies with species identity and spatial scale studied (Fogaca et al., 2013). However, the relationships between soil mesofauna

community and IS ratio at 200, 500, and 1000 m radiuses was not significant.

Decrease of habitat area is a consequence of habitat fragmentation due to urbanization. In this study, site area was positively correlated with soil mesofauna abundance. Contrasted to this result, soil collembola abundance in dry grassland does not show a significant relationship with site area (Querner et al., 2018). In a systematic literature review, Thakur et al. (2019) found only seven out of 12 studies on soil mesofauna provided support for the theory of island biogeography. Therefore, the question of whether the theory of island biogeography is applicable for soil mesofauna should be further investigated. Nevertheless, this study showed that higher site area could support higher soil mesofauna abundance in urban forests and urban woodland.

On the other hand, we found soil pH, TN, and CPI increased with IS ratio, indicating that IS ratio was a good indicator for these urban soil properties. Similar to IS ratio, site area was negatively correlated with soil pH and CPI. We concluded that habitat fragmentation due to urbanization may depress soil mesofauna abundance, however, to a larger extent, through influencing local soil property. This is in line with previous studies on aboveground arthropods in urban ecosystems (Smith and Schmitz, 2016; Kyro et al., 2018), which suggested local soil property is more important in regulating soil mesofauna communities than landscape trait.

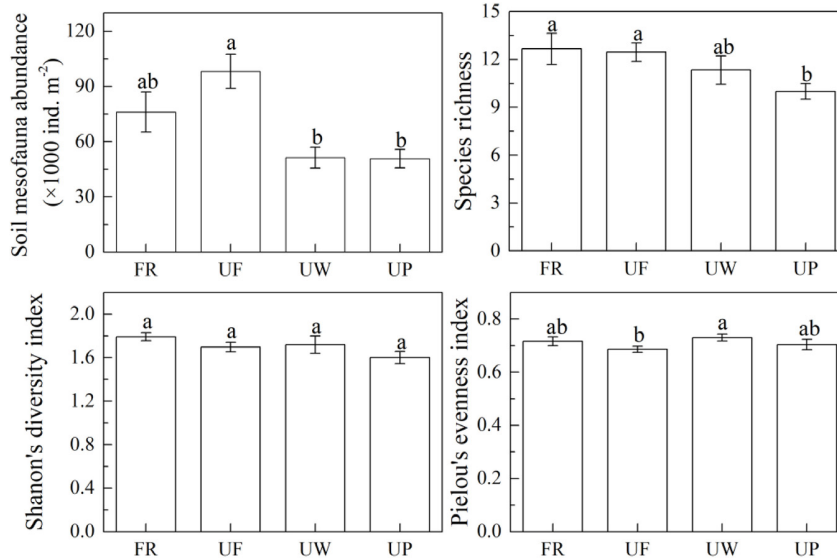


FIGURE 5 | Soil mesofauna community parameters in rural forest (RF), urban forest (UF), urban woodland (UW), and urban park (UP). Results are shown with means and standard errors. The letters indicate significant differences among the four ecosystem types at the level of $\alpha = 0.050$.

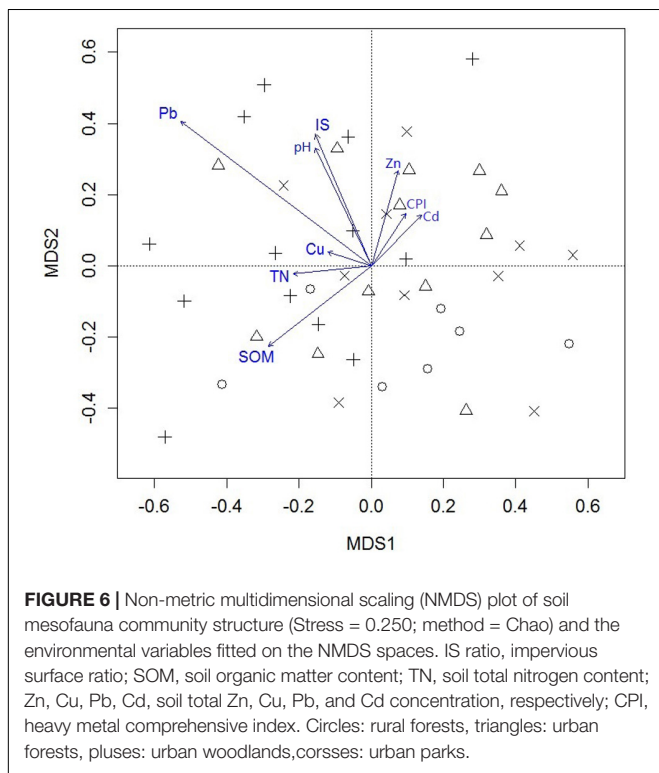


FIGURE 6 | Non-metric multidimensional scaling (NMDS) plot of soil mesofauna community structure (Stress = 0.250; method = Chao) and the environmental variables fitted on the NMDS spaces. IS ratio, impervious surface ratio; SOM, soil organic matter content; TN, soil total nitrogen content; Zn, Cu, Pb, Cd, soil total Zn, Cu, Pb, and Cd concentration, respectively; CPI, heavy metal comprehensive index. Circles: rural forests, triangles: urban forests, pluses: urban woodlands, crosses: urban parks.

TABLE 3 | Summary of permutational multivariate analysis of variance examining soil mesofauna community structure difference among rural forest (RF), urban forest (UF), urban woodland (UW), and urban park (UP).

	RF	UF	UW	UP
FP		$p = 0.588$ $R^2 = 0.028$	$p = 0.018$ $R^2 = 0.175$	$p = 0.015$ $R^2 = 0.294$
UF			$p = 0.006$ $R^2 = 0.191$	$p = 0.033$ $R^2 = 0.173$
UW				$p = 0.002$
UP				$R^2 = 0.265$

introduction, vegetation destruction, garden management practice, and so on (Bai et al., 2017). In the present study, 47 sites across Guangzhou City were classified into four ecosystem types with increasing urbanization intensity.

Located at hills, protected by laws, and far from urban buildings, the rural forest sites underwent the least anthropogenic disturbance. Consistent with the present study, many previous studies found a higher soil mesofauna richness in ecosystems with lower disturbance (Santorufu et al., 2012; Nagy et al., 2018; Lovei et al., 2019). Interestingly, urban forests had the highest soil mesofauna abundance. Urban forest sites were more isolated than rural forests, with an average IS ratio 290% higher. In addition, both soil pH and CPI, significantly and negatively correlated with soil mesofauna abundance, were higher in urban forests than those in rural forests. It seemed that we failed to define the specific disturbance features which overcame the negative effects of landscape and soil property changes and supported a more abundant soil mesofauna community. Nevertheless, consistent with some studies (e.g., Bogyo et al., 2015), our

Soil Mesofauna Community Significantly Varied Among Rural Forest, Urban Forest, Urban Woodland, and Urban Park

Apart from the landscape and soil property changes, urbanization may affect soil mesofauna communities through species

study suggested that light urban disturbance could increase soil mesofauna abundance, which supported the intermediate disturbance hypothesis (IDH). However, some other studies found that soil fauna abundance and diversity decrease with increasing urbanization intensity (Gray, 1989; Nagy et al., 2018; Lovei et al., 2019), thus not supporting IDH. The contradiction could be attributed to taxa- or parameter-specified sensitivity to urban disturbance (Gonzalez et al., 2016; Yoccoz et al., 2018; Nielsen et al., 2019). As in the present study, the IDH predicted the soil mesofauna abundance but not the Shannon's diversity index or Pielou's evenness index in the four urban ecosystem types. In addition, most previous studies studied the urbanization effect on soil fauna by comparing several ecosystems along an urban - rural urbanization gradient (e.g., Santorufo et al., 2014; Nagy et al., 2018; Lovei et al., 2019), which might fail to capture a complete spectrum of environmental variation due to urbanization.

Typically, urban woodland and urban park sites were of small area (fragmented), adjacent to impervious pavements or buildings. As a result, they were subjected to serious anthropogenic disturbances. The stronger disturbances could cause substantial resource availability changes for soil mesofauna and, as the present study suggested, increases in soil pH and soil heavy metal concentration. These changes may account for the decrease of soil mesofauna abundance and change in soil mesofauna community structure in these two ecosystem types.

Besides abundance and community, soil mesofauna species richness substantially decreased in urban parks compared to rural forests. In addition, though urban woodland and urban parks had similar soil mesofauna abundance, they had distinct soil mesofauna community compositions, revealing that garden managements had significant and different effects on soil mesofauna from those in urban woodlands. Garden management practices, such as sanitation, tillage, and application of pesticide, can substantially alter resource availability and quality for soil mesofauna (Norton, 2011) and change soil physiochemical

properties (Norton, 2011; Tresch et al., 2018, 2019), thus affecting soil mesofauna. In line with the present study, some previous studies found garden management decreased soil mesofauna abundance and diversity, thereby changing soil fauna community composition (Komarek et al., 2010; Dequiedt et al., 2011; Norton, 2011).

DATA AVAILABILITY STATEMENT

The raw data supporting the conclusions of this manuscript will be made available by the authors, without undue reservation, to any qualified researcher.

AUTHOR CONTRIBUTIONS

GX designed the experiments. SY and GX contributed to the field samples and data collection. XC and XL contributed to the soil mesofauna taxa identification. SY and XC analyzed the soil property. SY conducted the statistical analysis. JQ and XY conducted the GIS analysis. GX, FW, and SY wrote and revised the manuscript. All authors contributed to the article and approved the submitted version.

FUNDING

This work was supported by the National Natural Science Foundation of China (42071061).

SUPPLEMENTARY MATERIAL

The Supplementary Material for this article can be found online at: <https://www.frontiersin.org/articles/10.3389/fevo.2020.546433/full#supplementary-material>

REFERENCES

- Anderson, M. J., and Millar, R. B. (2004). Spatial variation and effects of habitat on temperate reef fish assemblages in northeastern New Zealand. *J. Exp. Mar. Biol. Ecol.* 305, 191–221. doi: 10.1016/j.jembe.2003.12.011
- Asabere, S. B., Zeppenfeld, T., Nketia, K. A., and Sauer, D. (2018). Urbanization leads to increases in pH, carbonate, and soil organic matter stocks of arable soils of Kumasi, Ghana (West Africa). *Front. Environ. Sci.* 6:119. doi: 10.3389/fevs.2018.00119
- Bai, X., McPhearson, T., Cleugh, H., Nagendra, H., Tong, X., Zhu, T., et al. (2017). Linking urbanization and the environment: conceptual and empirical advances. *Ann. Rev. Environ. Resources* 42, 215–240. doi: 10.1146/annurev-environ-102016-061128
- Bardgett, R. D., and van der Putten, W. H. (2014). Belowground biodiversity and ecosystem functioning. *Nature* 515, 505–511. doi: 10.1038/nature13855
- Bogyo, D., Magura, T., Simon, E., and Tothmeresz, B. (2015). Millipede (Diplopoda) assemblages alter drastically by urbanisation. *Landscape Urban Plann.* 133, 118–126. doi: 10.1016/j.landurbplan.2014.09.014
- Bolger, D. T., Suarez, A. V., Crooks, K. R., Morrison, S. A., and Case, T. J. (2000). Arthropods in urban habitat fragments in southern California: area, age, and edge effects. *Ecol. Appl.* 10, 1230–1248. doi: 10.1890/1051-0761(2000)010[1230:aiuhfj]2.0.co;2
- Braaker, S., Ghazoul, J., Obrist, M. K., and Moretti, M. (2014). Habitat connectivity shapes urban arthropod communities: the key role of green roofs. *Ecology* 95, 1010–1021. doi: 10.1890/13-0705.1
- Braaker, S., Obrist, M. K., Ghazoul, J., and Moretti, M. (2017). Habitat connectivity and local conditions shape taxonomic and functional diversity of arthropods on green roofs. *J. Animal Ecol.* 86, 521–531. doi: 10.1111/1365-2656.12648
- Bradshaw, A. D. (2003). "Natural ecosystems in cities: a model for cities as ecosystems," in *Understanding Urban Ecosystems*, ed. A. R. Berkowitz (New York, NY: Springer), 76–94.
- Burrow, C. (2018). Influence of connectivity & topsoil management practices of a constructed technosol on pedofauna colonization: a field study. *Appl. Soil Ecol.* 123, 416–419.
- Chen, D., Lan, Z., Hu, S., and Bai, Y. (2015). Effects of nitrogen enrichment on belowground communities in grassland: relative role of soil nitrogen availability vs. *Soil acidification*. *Soil Biol. Biochem.* 89, 99–108. doi: 10.1016/j.soilbio.2015.06.028
- Cordonnier, M., Gibert, C., Bellec, A., Kaufmann, B., and Escarguel, G. (2019). Multi-scale impacts of urbanization on species distribution within the genus

- Tetramorium. *Landscape Ecol.* 34, 1937–1948. doi: 10.1007/s10980-019-00842-7
- Crommentuijn, T., Brils, J., and Vanstraelen, N. M. (1993). Influence of cadmium on life-history characteristics of *Folsomia candida* (Willem) in an artificial soil substrate. *Ecotoxicol. Environ. Saf.* 26, 216–227. doi: 10.1006/eesa.1993.1051
- Dequiedt, S., Saby, N. P. A., Lelievre, M., Jolivet, C., Thioulouse, J., et al. (2011). Biogeographical patterns of soil molecular microbial biomass as influenced by soil characteristics and management. *Global Ecol. Biogeography* 20, 641–652. doi: 10.1111/j.1466-8238.2010.00628.x
- Didden, W., and Rombke, J. (2001). Enchytraeids as indicator organisms for chemical stress in terrestrial ecosystems. *Ecotoxicol. Environ. Saf.* 50, 25–43. doi: 10.1006/eesa.2001.2075
- Diego Ibanez-Alamo, J., Rubio, E., Benedetti, Y., and Morelli, F. (2017). Global loss of avian evolutionary uniqueness in urban areas. *Global Change Biol.* 23, 2990–2998. doi: 10.1111/gcb.13567
- Faeth, S. H., Bang, C., and Saari, S. (2011). Urban biodiversity: patterns and mechanisms. *Ann. N. Y. Acad. Sci.* 1223, 69–81. doi: 10.1111/j.1749-6632.2010.05925.x
- Fiera, C. (2009). Biodiversity of Collembola in urban soils and their use as bioindicators for pollution. *Pesquisa Agropecuaria Brasileira* 44, 868–873. doi: 10.1590/s0100-204x2009000800010
- Fogaca, F. N. O., Gomes, L. C., and Higuti, J. (2013). Percentage of impervious surface soil as indicator of urbanization impacts in neotropical aquatic insects. *Neotropical Entomol.* 42, 483–491. doi: 10.1007/s13744-013-0155-z
- Fountain, M. T., and Hopkin, S. P. (2004). Biodiversity of Collembola in urban soils and the use of *Folsomia candida* to assess soil 'quality'. *Ecotoxicology* 13, 555–572. doi: 10.1023/b:ectx.0000037192.70167.00
- Ge, B., Mehring, A. S., and Levin, L. A. (2019). Urbanization alters belowground invertebrate community structure in semi-arid regions: a comparison of lawns, biofilters and sage scrub. *Landscape Urban Plann.* 192:103664. doi: 10.1016/j.landurbplan.2019.103664
- Gilbert, O. L. (1989). *The Ecology of Urban Habitats*. London: Chapman & Hall.
- Gonzalez, A., Cardinal, B. J., Allington, G. R. H., Byrnes, J., Endsley, K. A., et al. (2016). Estimating local biodiversity change: a critique of papers claiming no net loss of local diversity. *Ecology* 97, 1949–1960. doi: 10.1890/15-1759.1
- Gray, J. S. (1989). Effects of environmental stress on species rich assemblages. *Biol. J. Linnean Soc.* 37, 19–32. doi: 10.1111/j.1095-8312.1989.tb02003.x
- Herbert, I. N., Svendsen, C., Hankard, P. K., and Spurgeon, D. J. (2004). Comparison of instantaneous rate of population increase and critical-effect estimates in *Folsomia candida* exposed to four toxicants. *Ecotoxicol. Environ. Saf.* 57, 175–183. doi: 10.1016/s0147-6513(03)00033-2
- Hruska, K. (2006). Notes on the evolution and organization of the urban ecosystem. *Urban Ecosystems* 9, 291–298. doi: 10.1007/s11252-006-0006-3
- Jim, C. Y. (1998). Urban soil characteristics and limitations for landscape planting in Hong Kong. *Landscape Urban Plann.* 40, 235–249. doi: 10.1016/s0169-2046(97)00117-5
- Joimel, S., Grard, B., Auclerc, A., Hedde, M., Le Doare, N., Salmon, S., et al. (2018). Are collembola "flying" onto green roofs? *Ecol. Eng.* 111, 117–124. doi: 10.1016/j.ecoleng.2017.12.002
- Joimel, S., Schwartz, C., Hedde, M., Kiyota, S., Krogh, P. H., Nahmani, J., et al. (2017). Urban and industrial land uses have a higher soil biological quality than expected from physicochemical quality. *Sci. Total Environ.* 584, 614–621. doi: 10.1016/j.scitotenv.2017.01.086
- Khalil, M. A., Janssens, T. K. S., Berg, M. P., and van Straalen, N. M. (2009). Identification of metal-responsive oribatid mites in a comparative survey of polluted soils. *Pedobiologia* 52, 207–221. doi: 10.1016/j.pedobi.2008.10.002
- King, R. S., and Baker, M. E. (2010). Considerations for analyzing ecological community thresholds in response to anthropogenic environmental gradients. *J. North Am. Benthol. Soc.* 29, 998–1008. doi: 10.1899/09-144.1
- Komarek, M., Cadkova, E., Chrastny, V., Bordas, F., and Bollinger, J. C. (2010). Contamination of vineyard soils with fungicides: a review of environmental and toxicological aspects. *Environ. Int.* 36, 138–151. doi: 10.1016/j.envint.2009.10.005
- Kyro, K., Brenneisen, S., Kotze, D. J., Szallies, A., Gerner, M., and Lehvavirta, S. (2018). Local habitat characteristics have a stronger effect than the surrounding urban landscape on beetle communities on green roofs. *Urban Forestry Urban Greening* 29, 122–130. doi: 10.1016/j.ufug.2017.11.009
- LaPoint, S., Balkenhol, N., Hale, J., Sadler, J., and van der Ree, R. (2015). Ecological connectivity research in urban areas. *Funct. Ecol.* 29, 868–878. doi: 10.1111/1365-2435.12489
- Lepczyk, C. A., Aronson, M. F. J., Evans, K. L., Goddard, M. A., Lerman, S. B., et al. (2017). Biodiversity in the city: fundamental questions for understanding the ecology of urban green spaces for biodiversity conservation. *Bioscience* 67, 799–807. doi: 10.1093/biosci/bix079
- Li, W.-X., Zhang, X.-X., Wu, B., Sun, S.-L., Chen, Y.-S., Pan, W.-Y., et al. (2008). A comparative analysis of environmental quality assessment methods for heavy metal-contaminated soils. *Pedosphere* 18, 344–352. doi: 10.1016/s1002-0160(08)60024-7
- Liu, K.-H., Fang, Y.-T., Yu, F.-M., Liu, Q., Li, F.-R., and Peng, S.-L. (2010). Soil acidification in response to acid deposition in three subtropical forests of subtropical China. *Pedosphere* 20, 399–408. doi: 10.1016/s1002-0160(10)60029-x
- Lovei, G. L., Horvath, R., Elek, Z., and Magura, T. (2019). Diversity and assemblage filtering in ground-dwelling spiders (Araneae) along an urbanisation gradient in Denmark. *Urban Ecosystems* 22, 345–353. doi: 10.1007/s11252-018-0819-x
- Madej, G., and Kozub, M. (2014). Possibilities of using soil microarthropods, with emphasis on mites (Arachnida, Acari, Mesostigmata), in assessment of successional stages in a reclaimed coal mine dump (Pszów, S Poland). *Biol. Lett.* 51, 19–36. doi: 10.1515/biolett-2015-0003
- Magura, T., Lövei, G. L., and Tóthmérész, B. (2010). Does urbanization decrease diversity in ground beetle (Carabidae) assemblages? *Global Ecol. Biogeography* 19, 16–26. doi: 10.1111/j.1466-8238.2009.00499.x
- Mao, Q., Huang, G., Buyantuev, A., Wu, J., Luo, S., and Ma, K. (2014). Spatial heterogeneity of urban soils: the case of the Beijing metropolitan region. *China. Ecol. Process.* 3:23.
- McIntyre, N. E., Rango, J., Fagan, W. F., and Faeth, S. H. (2001). Ground arthropod community structure in a heterogeneous urban environment. *Landscape Urban Plann.* 52, 257–274. doi: 10.1016/s0169-2046(00)00122-5
- McKinney, M. L. (2006). Urbanization as a major cause of biotic homogenization. *Biol. Conserv.* 127, 247–260. doi: 10.1016/j.biocon.2005.09.005
- McKinney, M. L. (2008). Effects of urbanization on species richness: a review of plants and animals. *Urban Ecosystems* 11, 161–176. doi: 10.1007/s11252-007-0045-4
- Menta, C., Conti, F. D., Pinto, S., and Bodini, A. (2018). Soil biological quality index (QBS-ar): 15 years of application at global scale. *Ecol. Indic.* 85, 773–780. doi: 10.1016/j.ecolind.2017.11.030
- Migliorini, M., Pigino, G., Bianchi, N., Bernini, F., and Leonzio, C. (2004). The effects of heavy metal contamination on the soil arthropod community of a shooting range. *Environ. Pollut.* 129, 331–340. doi: 10.1016/j.envpol.2003.09.025
- Milano, V., Maisto, G., Baldantoni, D., Bellino, A., Bernard, C., Croce, A., et al. (2018). The effect of urban park landscapes on soil Collembola diversity: a mediterranean case study. *Landscape Urban Plann.* 180, 135–147. doi: 10.1016/j.landurbplan.2018.08.008
- Nagy, D. D., Magura, T., Horvath, R., Debnar, Z., and Tothmeresz, B. (2018). Arthropod assemblages and functional responses along an urbanization gradient: a trait-based multi-taxa approach. *Urban Forestry Urban Greening* 30, 157–168. doi: 10.1016/j.ufug.2018.01.002
- Nahmani, J., and Lavelle, P. (2002). Effects of heavy metal pollution on soil macrofauna in a grassland of Northern France. *Eur. J. Soil Biol.* 38, 297–300. doi: 10.1016/s1164-5563(02)01169-x
- Nielsen, T. F., Sand-Jensen, K., Dornelas, M., and Bruun, H. H. (2019). More is less: net gain in species richness, but biotic homogenization over 140 years. *Ecol. Lett.* 22, 1650–1657. doi: 10.1111/ele.13361
- Norton, B. A. (2011). *The Sanitisation of Urban Ecosystems: Simplification of the Ground Layer in Eucalypt Woodlands and the Effects on Arthropod Communities*. Melbourne: University of Melbourne.
- Parisi, V., Menta, C., Gardi, C., Jacomini, C., and Mozzanica, E. (2005). Microarthropod communities as a tool to assess soil quality and biodiversity: a new approach in Italy. *Agricult. Ecosystems Environ.* 105, 323–333. doi: 10.1016/j.agee.2004.02.002
- Pielou, E. C. (1969). *An Introduction to Mathematical Ecology*. New York, NY: Wiley-Inter-science.
- Pouyat, R., Groffman, P., Yesilonis, I., and Hernandez, L. (2002). Soil carbon pools and fluxes in urban ecosystems. *Environ. Pollut.* 116, S107–S118.

- Pouyat, R. V., Yesilonis, I. D., Dombos, M., Szlavecz, K., Setala, H., Cilliers, S., et al. (2015). A global comparison of surface soil characteristics across five cities: a test of the urban ecosystem convergence hypothesis. *Soil Sci.* 180, 136–145. doi: 10.1097/ss.0000000000000125
- Querner, P., Milasowszky, N., Zulka, K. P., Abensperg-Traun, M., Willner, W., Sauberer, N., et al. (2018). Habitat structure, quality and landscape predict species richness and communities of collembola in dry grasslands in Austria. *Insects* 9:81. doi: 10.3390/insects9030081
- Rudisser, J., Tasser, E., Peham, T., Meyer, E., and Tappeiner, U. (2015). The dark side of biodiversity: spatial application of the biological soil quality indicator (BSQ). *Ecol. Indic.* 53, 240–246. doi: 10.1016/j.ecolind.2015.02.006
- Rzeszowski, K., Zadrozny, P., and Nicia, P. (2017). The effect of soil nutrient gradients on Collembola communities inhabiting typical urban green spaces. *Pedobiologia* 64, 15–24. doi: 10.1016/j.pedobi.2017.06.003
- Santorufu, L., Cortet, J., Arena, C., Goudon, R., Rakoto, A., Morel, J. L., et al. (2014). An assessment of the influence of the urban environment on collembolan communities in soils using taxonomy- and trait-based approaches. *Appl. Soil Ecol.* 78, 48–56. doi: 10.1016/j.apsoil.2014.02.008
- Santorufu, L., Van Gestel, C. A. M., Rocco, A., and Maisto, G. (2012). Soil invertebrates as bioindicators of urban soil quality. *Environ. Pollut.* 161, 57–63. doi: 10.1016/j.envpol.2011.09.042
- Seress, G., Lipovits, A., Bokony, V., and Czuni, L. (2014). Quantifying the urban gradient: a practical method for broad measurements. *Landscape Urban Plann.* 131, 42–50. doi: 10.1016/j.landurbplan.2014.07.010
- Shannon, C. E. (1948). A mathematical theory of communication. *Bell System Tech. J.* 27, 379–423.
- Siepel, H., Vogels, J., Bobbink, R., Bijlsma, R. J., Jongejans, E., de Waal, R., et al. (2018). Continuous and cumulative acidification and N deposition induce P limitation of the micro-arthropod soil fauna of mineral-poor dry heathlands. *Soil Biol. Biochem.* 119, 128–134. doi: 10.1016/j.soilbio.2018.01.025
- Smith, J. R., and Schmitz, O. J. (2016). Cascading ecological effects of landscape moderated arthropod diversity. *Oikos* 125, 1261–1272. doi: 10.1111/oik.02887
- Song, Y.-S., Li, X.-W., Li, F., and Li, H.-M. (2015). Influence of different types of surface on the diversity of soil fauna in Beijing Olympic Park. *J. Appl. Ecol.* 26, 1130–1136.
- Sterzynska, M., Nicia, P., Zadrozny, P., Fiera, C., Shrubovych, J., and Ulrich, W. (2018). Urban springtail species richness decreases with increasing air pollution. *Ecol. Indic.* 94, 328–335. doi: 10.1016/j.ecolind.2018.06.063
- Thakur, M. P., Phillips, H. R. P., Brose, U., De Vries, F. T., Lavelle, P., et al. (2019). Towards an integrative understanding of soil biodiversity. *Biol. Rev.* 95, 350–364.
- Trammell, T. L. E., Pataki, D. E., Pouyat, R. V., Groffman, P. M., Rosier, C., Bettez, N., et al. (2020). Urban soil carbon and nitrogen converge at a continental scale. *Ecol. Monographs* 90:e01401.
- Tresch, S., Frey, D., Bayon, R.-C. L., Mäder, P., Stehle, B., Fließbach, A., et al. (2019). Direct and indirect effects of urban gardening on aboveground and belowground diversity influencing soil multifunctionality. *Sci. Rep.* 9:9769.
- Tresch, S., Moretti, M., Le Bayon, R. C., Mader, P., Zanetta, A., Frey, D., et al. (2018). A gardener's influence on urban soil quality. *Front. Environ. Sci.* 6:25. doi: 10.3389/fenvs.2018.00025
- Walsh, C. J., Roy, A. H., Feminella, J. W., Cottingham, P. D., Groffman, P. M., and Morgan, R. P. (2005). The urban stream syndrome: current knowledge and the search for a cure. *J. North Am. Benthol. Soc.* 24, 706–723. doi: 10.1899/04-028.1
- Wei, B., and Yang, L. (2010). A review of heavy metal contaminations in urban soils, urban road dusts and agricultural soils from China. *Microchem. J.* 94, 99–107. doi: 10.1016/j.microc.2009.09.014
- Wolters, V. (2001). Biodiversity of soil animals and its function. *Eur. J. Soil Biol.* 37, 221–227. doi: 10.1016/s1164-5563(01)01088-3
- Xie, T., Wang, M., Chen, W., and Uwizeyimana, H. (2018). Impacts of urbanization and landscape patterns on the earthworm communities in residential areas in Beijing. *Sci. Total Environ.* 626, 1261–1269. doi: 10.1016/j.scitotenv.2018.01.187
- Yin, W. (1998). *Illustrated Handbook of Soil Animals in China*. Beijing: Science Press.
- Yoccoz, N. G., Ellingsen, K. E., and Tveraa, T. (2018). Biodiversity may wax or wane depending on metrics or taxa. *Proc. Natl. Acad. Sci. U S A.* 115, 1681–1683. doi: 10.1073/pnas.1722626115
- Zhou, W., Tang, J., and Guan, D. (2009). The distributive character and pollution assessment of heavy metals in urban soil of guangzhou. *Acta Scientiarum Naturalium Universitatis Sunyatseni* 48, 47–51.

Conflict of Interest: The authors declare that the research was conducted in the absence of any commercial or financial relationships that could be construed as a potential conflict of interest.

Copyright © 2021 Yu, Qiu, Chen, Luo, Yang, Wang and Xu. This is an open-access article distributed under the terms of the Creative Commons Attribution License (CC BY). The use, distribution or reproduction in other forums is permitted, provided the original author(s) and the copyright owner(s) are credited and that the original publication in this journal is cited, in accordance with accepted academic practice. No use, distribution or reproduction is permitted which does not comply with these terms.