



Nutrient Addition and Drought Interact to Change the Structure and Decrease the Functional Diversity of a Mediterranean Grassland

Carla Nogueira^{1*}, Alice Nunes², Miguel N. Bugalho³, Cristina Branquinho²,
Rebecca L. McCulley⁴ and Maria Conceição Caldeira¹

¹ Forest Research Centre, School of Agriculture, University of Lisbon, Lisbon, Portugal, ² Centre for Ecology, Evolution and Environmental Changes, Faculdade de Ciências, Universidade de Lisboa, Lisbon, Portugal, ³ Centre for Applied Ecology "Prof. Baeta Neves" (CEABN-InBIO), School of Agriculture, University of Lisbon, Lisbon, Portugal, ⁴ Department of Plant and Soil Science, University of Kentucky, Lexington, KY, United States

OPEN ACCESS

Edited by:

Urs Feller,
Universität Bern, Switzerland

Reviewed by:

Fernando Carlos Gómez-Merino,
Colegio de Postgraduados
(COLPOS), Mexico
Leslie George Firbank,
University of Leeds, United Kingdom
Christel Baum,
University of Rostock, Germany

*Correspondence:

Carla Nogueira
cnogueira@isa.ulisboa.pt

Specialty section:

This article was submitted to
Agroecology and Ecosystem Services,
a section of the journal
Frontiers in Ecology and Evolution

Received: 14 May 2018

Accepted: 14 September 2018

Published: 05 October 2018

Citation:

Nogueira C, Nunes A, Bugalho MN,
Branquinho C, McCulley RL and
Caldeira MC (2018) Nutrient Addition
and Drought Interact to Change the
Structure and Decrease the Functional
Diversity of a Mediterranean
Grassland. *Front. Ecol. Evol.* 6:155.
doi: 10.3389/fevo.2018.00155

Anthropogenic activities are increasing nutrient availability and altering precipitation regimes. This may lead to critical changes in grasslands functioning. This is particularly important for grasslands in the Mediterranean Basin that have evolved in nutrient poor soils, and where more frequent and prolonged droughts are projected to occur. However, there is limited knowledge regarding the interacting effects of multiple nutrient inputs and rainfall variability on the plant functional structure and diversity of Mediterranean grasslands. We conducted a nutrient addition experiment in a Mediterranean grassland during four contrasting precipitation years. We established four treatments that varied in the number of added nutrients, from no added nutrients (control), to one added nutrient (Nitrogen-N, Phosphorus-P, or Potassium-K), two added nutrients, (NP, NK, or PK) and three added nutrients (NPK). We assessed the effect of increasing nutrient addition in wet, normal, dry, and very dry years on plant species functional traits at the community level. We determined the community functional structure (e.g., Community Weighted Mean, CWM) and functional diversity (e.g., Functional Dispersion, FDis) for eight key functional traits indicators of nutrient and water use strategies. We also assessed if CWM, FDis, and species richness were related to the aggregate grassland functioning property, i.e., productivity. We found that CWM was affected by nutrient addition and precipitation and, for some traits, by their interaction. However, FDis of most traits was affected by precipitation. The very dry year had a negative effect on FDis of most traits (e.g., dispersal modes, nutrient uptake strategies) and interacted with three added nutrients to decrease FDis of growth-forms. Conversely, FDis of reproductive traits decreased during the wet year. Species richness and FDis were not related to grassland productivity, whereas CWM was the main determinant of grassland productivity supporting the importance of species functional traits in determining ecosystem functioning. Our results highlight drought

as a critical factor determining a decrease in the functional diversity of Mediterranean grasslands. Moreover, drought can also interact with nutrient addition changing the dominance of many traits and further decreasing functional diversity. This may have important implications for grasslands functioning in the context of global changes.

Keywords: community weighted mean, functional dispersion, inter-annual climatic variability, nutrient addition, Mediterranean grassland, plant functional traits

INTRODUCTION

Mediterranean grasslands are species-diverse ecosystems of high economic and ecological value (Hector and Bagchi, 2007; Bugalho and Abreu, 2008) likely to experience biodiversity changes due to interacting global change drivers (Sala et al., 2000).

Anthropogenic activities, such as fossil fuel combustion and fertilizer applications are increasing nutrient inputs, such as of nitrogen (N) and phosphorus (P), into the biosphere (Peñuelas et al., 2013). Nutrient addition often leads to decreases in plant species diversity and compositional shifts, which may potentially affect ecosystem functioning and resilience (Bobbink et al., 2010; Stevens et al., 2010; Flores-Moreno et al., 2016; Harpole et al., 2016). Climate change may also lead to reduction in species richness (e.g., Thuiller et al., 2005) and induce changes in community composition (e.g., Dornelas et al., 2014). Moreover, these two drivers of change, may interact, further affecting grassland diversity and functioning (e.g., Zavaleta et al., 2003; Harpole et al., 2007). This is particularly important in the Mediterranean region, a hot-spot for climate changes (Giorgi, 2006), where increased precipitation variability and frequency of droughts is forecasted to occur (Costa et al., 2012; Kovats et al., 2014).

Many studies have evaluated the responses of grassland plant species composition and diversity to alterations in environmental conditions, such as fertilization or drought (e.g., Tilman and El Haddi, 1992; Zavaleta et al., 2003; Harpole et al., 2007, 2016; Bobbink et al., 2010; Stevens et al., 2010; DeMalach et al., 2017). Species richness and diversity, *per se*, however do not reflect the role of plant species in ecosystem functioning (e.g., Tilman et al., 1997; McGill et al., 2006; Cadotte et al., 2011; Mouillot et al., 2011). Species functional traits, however, can provide a mechanistic and predictive understanding of ecosystem responses to environmental changes (e.g., Díaz et al., 2007; Mouillot et al., 2011). Functional traits are morphological, physiological, or phenological features of species that can be measured at the individual level (Díaz and Cabido, 2001). Functional traits determine the species functional role in ecosystems and/or their response to changing environmental conditions or disturbances (Díaz and Cabido, 2001). Ecosystem functioning and resilience depend on the functional traits of the dominant plant species in a community (i.e., community functional structure), in accordance with the mass-ratio hypothesis (Grime, 1998), and on the dissimilarity of functional trait values within that community (here defined as functional diversity *sensu* Laliberté and Legendre, 2010).

Communities with a high functional diversity are expected to improve ecosystem functioning by increased complementarity in resource use among species (Tilman et al., 1997) and to provide high resilience to disturbances (Díaz et al., 2007; Cadotte et al., 2011; Mouillot et al., 2011; Voltaire et al., 2014; Valencia et al., 2015).

Although the response of communities' functional structure and diversity to decreased nutrient limitation (e.g., Suding et al., 2005; Janeček et al., 2013; Helsen et al., 2014) or to drought (e.g., Polley et al., 2013; Carmona et al., 2015; Nunes et al., 2017) have been previously assessed, the concurrent effects of both remain unclear. Nutrient addition was shown to favor the abundance of species with high specific leaf area (SLA) and height, probably because these traits correlate better with competition for nutrients and light (Westoby et al., 2002; Suding et al., 2005; Ordoñez et al., 2009; Janeček et al., 2013; Eskelinen and Harrison, 2015). This may explain a positive response in the abundance of grasses (Zavaleta et al., 2003) to the detriment of the less competitive, rosette growth-forms (Pfeister et al., 2013) when nutrients were added. The increased frequency of droughts predicted for the Mediterranean Basin, coupled with its high inter-annual precipitation variability, may also modify the functional structure and diversity of grassland communities, and affect ecosystem functioning (Pérez-Camacho et al., 2012; Carmona et al., 2015; Nunes et al., 2017). For example, drought generally favors small stress-tolerant and slow-growing species with low SLA, high leaf dry matter content (LDMC) (e.g., Westoby et al., 2002; Carmona et al., 2015), delayed flowering onset and shorter flowering duration (Crimmins et al., 2013), although an earlier flowering onset has also been observed with increasing drought (Pérez-Camacho et al., 2012; Shavrukov et al., 2017). In addition, Rota et al. (2017) observed a decrease in seed mass functional diversity due to drought, whereas functional diversity of SLA was unresponsive.

These findings indicate that nutrient addition and drought can select for different plant traits underlying opposite strategies, such as high and low SLA, respectively, thus drawing attention to the importance of understanding the response of grassland communities to interacting global change drivers (Bernard-Verdier et al., 2012; Pérez-Ramos et al., 2013; Eskelinen and Harrison, 2015; Rota et al., 2017).

In this 4-year study, we assessed how increasing nutrient availability and different precipitation years, ranging from wet to very dry years, interacted to affect community functional structure and functional trait diversity of a Mediterranean grassland. To achieve this, we focused on eight key plant functional traits known to be responsive to nutrient and water

use strategies (Cornelissen et al., 2003; Garnier et al., 2007) and used the community weighted mean (CWM) and functional dispersion (FDIs) as metrics of community functional structure and functional diversity, respectively. We hypothesized that (1) nutrient addition and precipitation are strong interacting filters of plant community functional structure; and (2) as precipitation plays a fundamental role in determining richness and community composition in Mediterranean ecosystems, functional diversity will be primarily influenced by precipitation.

MATERIALS AND METHODS

Site Description

We conducted our study in a semi-natural Mediterranean grassland, located north-east of Lisbon, Portugal (38°49'45.13''N, 8°47'28.61''W). The grassland community, occasionally grazed by cattle until 2012, was dominantly composed by annual C3 species that grow in winter and early spring, and start senescing in late spring. Overall, dominant species are the forbs *Tolpis barbata* L., *Plantago bellardii* All., the graminoids *Agrostis pourretii* Willd., *Avena barbata* Link., and the nitrogen-fixing legumes *Ornithopus compressus* L. and *Trifolium arvense* L.

The climate is Mediterranean-type with long-term (1961–1990) mean annual rainfall of 709 mm, with considerable inter-annual variation. Mean annual temperature is 15.9°C, ranging from 10°C in January to 22.5°C in August [(Instituto Nacional de Meteorologia e Geofísica (INMG), 1991)]. Site topography is flat. The soil is a well-drained deep Haplic Arenosol (IUSS Working Groups WRB, 2006) with a low soil water retention capacity. Prior to treatment initiation, two soil cores (2.5 cm in diameter, 10 cm depth from soil surface) were collected from each plot. The plot subsamples were composited, homogenized, and air-dried. Soil C (%) and N (%) were determined by The Ecosystems Analysis Laboratory at the University of Nebraska using dry combustion GC analysis (COSTECH ESC 4010 Elemental Analyzer, Costech Analytical Technologies, Valencia, California, USA). Extractable soil P and K and soil pH were determined at A&L Analytical Laboratory (Memphis, TN). Soil pH was measured using a 1:1 soil to water slurry (Table 1).

Experimental Design

We added N, P, and potassium (K) combined with a micronutrient mixture to 5 × 5 m plots, following a full factorial combination in a complete randomized three block design. We considered four treatments that varied in the number of added macronutrients (0, 1, 2, and 3) following Harpole et al. (2016). Hereafter, we use the term “number of added nutrients” for simplicity. Specifically, the treatments were: Controls, i.e., no added nutrients, termed as 0 (6 replicates); additions of one single nutrient N, P, or K (9 replicates); addition of two joint nutrients (NP, NK, or PK), named as 2 added nutrients (9 replicates); and plots fertilized with a combination of 3 nutrients, NPK that is 3 added nutrients treatment (6 replicates) (Table 2). The experiment is part of the global Nutrient Network experiment (www.nutnet.org; Borer et al., 2017)

The experiment started in 2012 and lasted until 2017. However, we excluded the year of 2015 as the cattle broke through

TABLE 1 | Pre-treatment nutrient soil content and pH values.

Carbon (%)	1.87 ± 0.05
Nitrogen (%)	0.12 ± 0.00
Phosphorus (ppm)	34.72 ± 1.12
Potassium (ppm)	86.33 ± 2.72
Calcium (ppm)	891.75 ± 36.60
Magnesium (ppm)	54.03 ± 1.54
Sulfur (ppm)	16.56 ± 1.01
Sodium (ppm)	26.11 ± 1.26
Boron (ppm)	0.66 ± 0.49
Copper (ppm)	1.57 ± 1.60
Iron (ppm)	463.08 ± 23.05
Manganese (ppm)	23.94 ± 0.04
Zinc (ppm)	6.13 ± 0.03
pH	5.93 ± 0.04

Values refer to average of all plots (two soil cores per plot) ± s.e.m.

TABLE 2 | Nutrient addition treatments grouped as number of added nutrients following Harpole et al. (2016).

Added nutrients	Number of added nutrients
Control	0
N	1
P	
K	
NP	2
NK	
PK	
NPK	3

N, P, and K were applied at a rate of 100 kg.ha⁻¹.yr⁻¹. N was applied as urea, P as triple-super phosphate and K as potassium sulfate. A micronutrient mixture was added with K only in the first year of the study at a rate of 1,000 kg.ha⁻¹.

the fence during February and heavily defoliated and trampled the plots. We added nutrients every fall, at the beginning of the growing season. We applied N, P, and K at a rate of 100 kg.ha⁻¹.yr⁻¹. N was added from 2012 to 2016 as slow-release urea (60–90 days), switching in 2017 to two separate additions of urea (3 months apart to mimic slow release) due to restricted availability of timed-release urea. P was added as triple-super phosphate, and K as potassium sulfate. A micronutrient mixture (6% Ca, 3% Mg, 12% S, 0.1% B, 1% Cu, 17% Fe, 2.5% Mn, 0.05% Mo, and 1% Zn) was added at a rate of 1,000 kg.ha⁻¹ with K and was only applied in 2012, the first year of the study, to avoid micronutrient toxicity.

The site was fenced to avoid intense cattle grazing and trampling. We used a brush cutter and removed all standing vegetation in the fenced experimental area at the end of each growing season after seed production and dispersal to eliminate potential effects of carried-over biomass (Dudney et al., 2017).

In situ precipitation was recorded using a tipping bucket rain gauge (RG2, Delta-T Devices, Cambridge, UK), connected to a CR1000 and AM16/32B multiplexer data logger (Campbell Scientific, Logan, USA).

Precipitation Years

During our study, the hydrological precipitation (October–September) of the four years was 483 mm (very dry year, 2017), 598 mm (dry year, 2016), 708 mm (normal year, 2013), and 814 mm (wet year, 2014) (**Figure 1A**). The year of 2017 was the driest hydrological year, with precipitation 32% below the long-term average (709 mm). April 2017 was unusually dry with 28 consecutive days without rain (**Figure 1B**) and unusually hot, from April to June (average for the 3 months: 3.2°C, above to long-term) (**Figure 1C**). Precipitation in 2016 was 16% below and in 2014, 15% above the long-term average (**Figure 1A**). The year of 2015, which was not included in our analysis, was also a very dry year, especially during winter and spring, with total precipitation 465 mm, 34% below the long-term average (**Figure 1A**).

Vegetation Sampling

Species cover (%), to the nearest 1%, of each plant species was estimated annually by observation, using a modified Daubenmire method (Daubenmire, 1959), at peak vegetation growth, in a permanently marked 1 m² quadrat in each plot.

Species Richness and Aboveground Biomass

We have also examined the pattern of plant species richness and grassland productivity to increasing number of added nutrients (Nogueira et al., unpublished). Species richness was determined as the number of plant species per plot each year. Aboveground plant biomass was estimated by collecting, every year, all individual plants rooted within two 10 × 100 cm strips per plot, at the time of peak biomass accumulation. We considered aboveground biomass as a proxy for productivity. The locations of the clipping strips were moved within each plot every year to prevent clipping effects. Samples were dried to constant mass at 60°C prior to weighing.

Trait Selection

Selection of plant functional traits is a critical step to understand and predict community functioning and responses to environmental changes and disturbance (Petchey and Gaston, 2006). Therefore, we selected eight plant traits including continuous, ordinal and categorical traits, that reflect plant functional responses to water and soil nutrient availability (e.g., Cornelissen et al., 2003; **Table 3**). Trait data was obtained for 61 species identified in our grassland communities throughout the 4-year study. Trait information was obtained through direct observation or measurements in the field, following standard protocols (Cornelissen et al., 2003; Pérez-Harguindeguy et al., 2013), and/or derived from the literature (Franco, 1971, 1984; Castroviejo, 1986–2012; Valdés et al., 1987; Garnier et al., 1997; Paula and Pausas, 2013; **Table 3**). We used a single mean trait value per species to compute functional trait metrics. If different trait values for the same species could be found in the literature, we opted for plant trait values obtained in Mediterranean regions. Although intraspecific trait variability plays an important role in many ecosystem processes and contributes to the understanding of community response to

environmental changes (Lepš et al., 2011), in this study we only consider differences in functional structure and functional diversity caused by changes in species composition (Bernard-Verdier et al., 2012; Carmona et al., 2015; Rota et al., 2017).

Functional Trait Metrics

To assess community functional structure, we determined the Community Weighted Mean (CWM) for each trait, which corresponds to the average trait value in a community, weighted by the relative abundance of the species carrying each trait value (Garnier et al., 2007). CWM trait values are a quantitative translation of the biomass ratio hypothesis (Grime, 1998) by reflecting the dominant trait values in a community. For continuous traits CWM values represent the mean value of that trait in the community, for categorical and binary traits CWM values correspond to the proportion of each category in the community.

Functional trait diversity within the plant community was determined through Functional Dispersion (FDis), which is closely related to Rao's quadratic entropy (Laliberté and Legendre, 2010). It estimates the dispersion of species in functional trait space, weighted by their relative abundances. It is calculated as the weighted mean distance, in multidimensional trait space, of individual species from the weighted centroid of all species, where weights correspond to species relative abundances (Laliberté and Legendre, 2010). The minimum value FDis can take is 0 (e.g., communities composed by only one species) and it has no upper limit. FDis has several advantages over other functional diversity indices as it takes into account species relative abundances, it is unaffected by species richness, handles any number and type of traits (including more traits than species) and is not strongly influenced by outliers (Laliberté and Legendre, 2010). We calculated FDis for each functional trait individually and for the six traits combined, that responded significantly to nutrient addition and precipitation (multi-trait). The calculation of trait metrics was done using the FD package (Laliberté and Shipley, 2011), in software R (R Core Team, 2015).

Statistical Analyses

To examine the effect of number of added nutrients and precipitation (hydrological year) on community plant species composition, we performed a non-metric multidimensional scaling ordination (NMDS) based on species cover of each plot sampled in each nutrient addition treatment throughout our four-year study. We used *meta MDS* function from *vegan* package (Oksanen et al., 2013), with Bray-Curtis distance measure. Ordination *stress* statistic was used as a measure of goodness of fit. A permutational multivariate analysis of variance (PERMANOVA) was performed with 9,999 permutations on Bray-Curtis communities' dissimilarities, to test for the effect of number of added nutrients and precipitation year (Oksanen, 2011) on species composition.

The influence of number of added nutrients, precipitation year, and their interaction on single-trait CWM and FDis values and on multi-trait FDis computed for traits that were significantly affected by nutrient addition and precipitation years

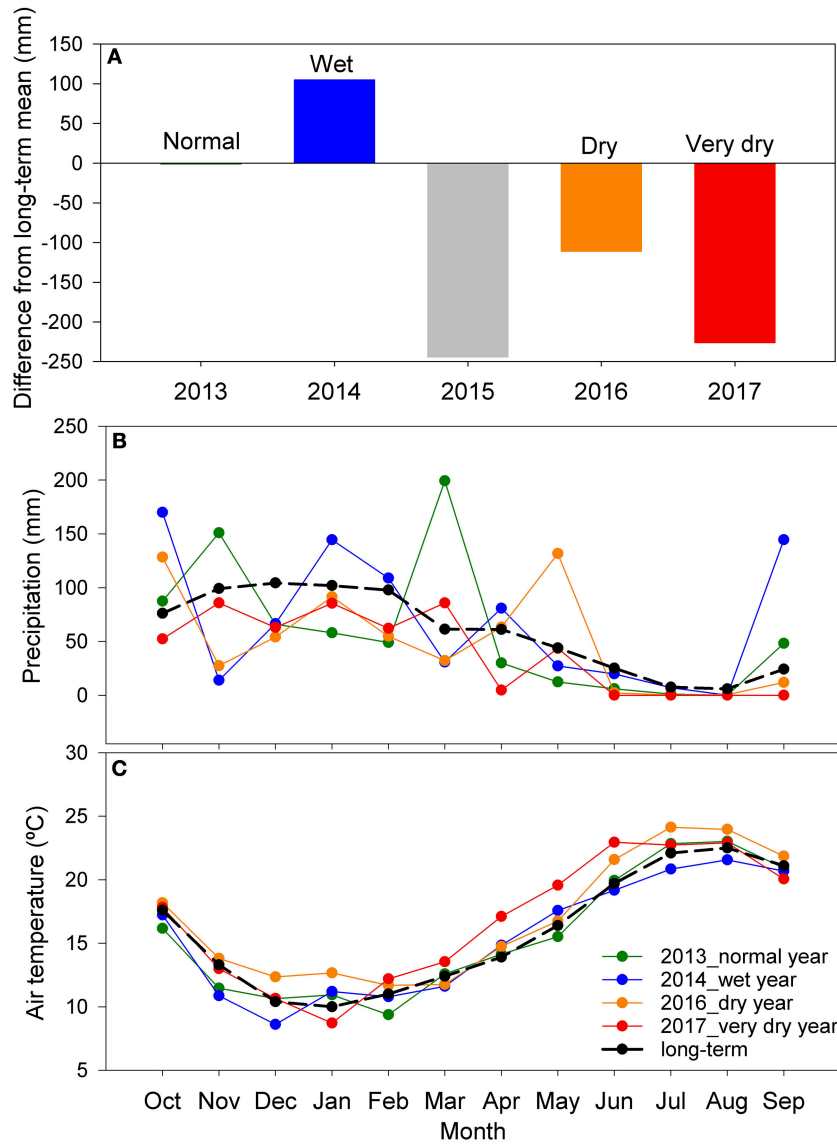


FIGURE 1 | (A) Precipitation difference from the long-term hydrological year average (709 mm, 1961–1990), for 2013–2017. 2013 (normal precipitation year—total precipitation, 708 mm), 2014 (wet year—814 mm), 2015 (very dry year—465 mm) not included in our study, 2016 (dry year—598 mm) and 2017 (very dry year—483 mm). Monthly values of total precipitation **(B)** and average air temperature **(C)** for 2013, 2014, 2016, 2017 and long-term (1961–1990) for comparison.

was examined by means of general linear mixed models. Number of added nutrients and precipitation year were used as fixed effects explanatory variables and plots were used as a random factor, to account for non-independent observations made along the four years of the study in each plot. Tuckey pairwise comparisons with Bonferroni corrections were performed to check for differences between number of added nutrients and between different precipitation years.

We used Spearman correlation to test for the significance of correlations between species richness, CWM, FDis, and productivity. We selected growth-form, maximum height, SLA, and LDMC for Spearman correlation as these traits may reflect grassland productivity (Table 3). Spearman correlation was used to account for possible nonlinear relationships.

All the analyses were performed under R statistical environment (R Core Team, 2015). Graphs, except Figure 2, were done with Sigmaplot 13.0 (Systac Software, Inc., San Jose, USA).

RESULTS

The Effect on Community Species Composition

Main gradients in community species composition are described by a 2-dimensional non-metric multidimensional scaling (NMDS) ordination with a final stress value of 0.22 (Figures 2A,B). The first axis (NMDS1) explained 35.5% and the

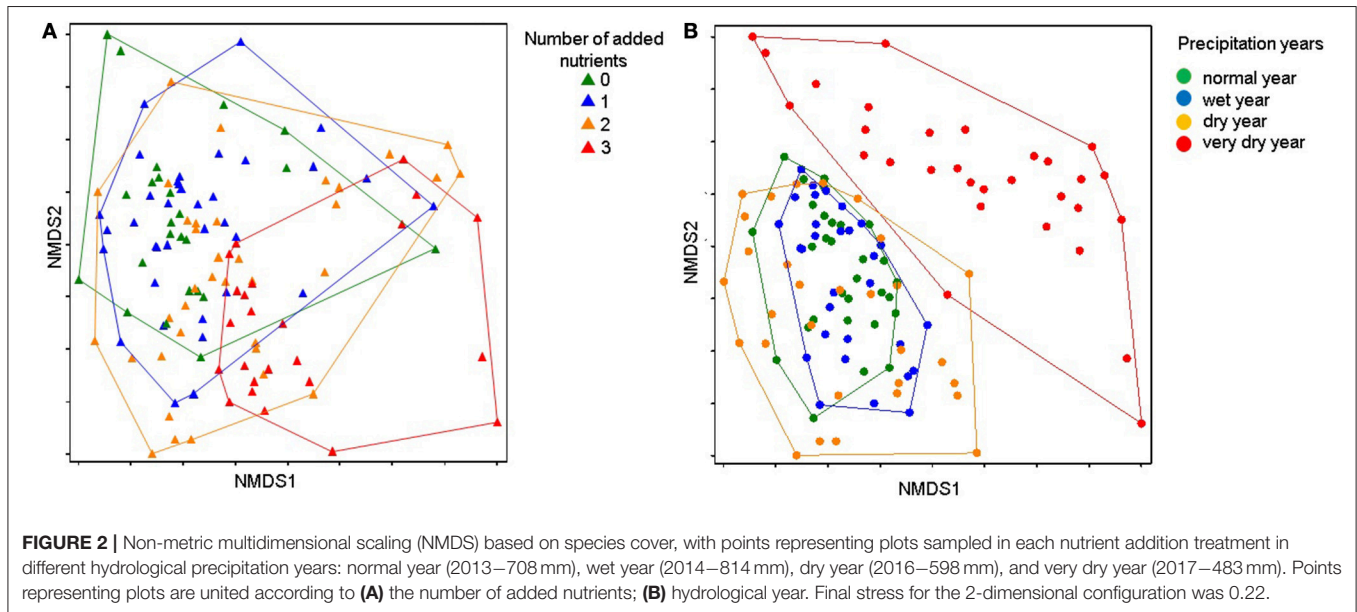
TABLE 3 | Functional traits studied, their typology/units and their main role in plant functioning.

Trait	Type	Typology/units	Functional role
VEGETATIVE			
Growth-form ^a	Categorical	Ascending Climber Erect Graminoid Prostrate Rosette	Light capture, above-ground competition, resistance to disturbance
Maximum height ^a	Continuous	cm	Light capture, above-ground competition
LEAF			
SLA ^a	Continuous	mm ² .mg ⁻¹	Light capture, growth rate
LDMC ^a	Continuous	mg.g ⁻¹	Physical resistance, stress tolerance
REPRODUCTIVE			
Onset flowering ^b	Semi-quantative	Initial month number	Phenological, reproductive strategy, drought-tolerance
Duration flowering ^b	Semi-quantative	Number of months	
REGENERATIVE			
Dispersal strategy ^b	Categorical	Wind Gravity External animal Internal animal	Dispersal ability, covered distances
BELOW-GROUND			
Nutrient uptake strategy ^b	Categorical	N-fixer Orchid root Root hemiparasite None specified	Uptake of essential nutrients

Superscript letter next to each trait indicates sources used to obtain trait information:

^aObserved or measured in the field following standard protocols (Cornelissen et al., 2003; Pérez-Harguindeguy et al., 2013) and derived from bibliographic sources.

^bOnly derived from bibliographic sources.



second axis (NMDS2) explained 18.6% of the variation in species composition (**Figures 2A,B**). Plant community composition changed significantly with the increase in number of added

nutrients (PERMANOVA test: $F = 9.98, P < 0.001$), and with the total hydrological precipitation, mainly in the very dry year (PERMANOVA test: $F = 14.01, P < 0.001$).

Functional Structure of Plant Communities

Ten out of sixteen CWM trait values were significantly related to number of added nutrients (Table 4), four of which had a significant interaction with precipitation year (graminoid and erect growth-forms, SLA, and LDMC; Table 4). Differences between nutrient addition treatments were, in most cases, only significant between three added nutrients and controls and one added nutrient treatment. In general, CWM values were significantly affected by the very dry year compared to other type of years (Table 4).

Species Growth-Forms and Height

Overall, dominant species in our grassland were graminoids (proportional cover, average \pm s.e.m.: 0.34 ± 0.02), erect (0.32 ± 0.02), and rosette (0.21 ± 0.02), while ascending (0.03 ± 0.003) and prostrate species (0.10 ± 0.01) were less abundant.

Increasing number of added nutrients had a significant positive effect on the cover of graminoids to the detriment of ascending, erect, and rosette growth-forms (Table 4). Prostrate species were significantly and positively affected by precipitation and unaffected by nutrient addition (Table 4). In the very dry year, prostrate species were residual (0.01 ± 0.003) as compared to other years (0.13 ± 0.01 , average across treatments).

Graminoids were affected by a significant interaction between the number of added nutrients and precipitation (Table 4). During the wet year, abundance of graminoids was lowest (0.17 ± 0.02) compared to other years (0.40 ± 0.03); with no significant differences between nutrient addition treatments (Figure 3A). However, for other precipitation years, graminoids were significantly more abundant in the three added nutrients treatment as compared to one added nutrient (normal: $t = -3.89$, $P = 0.004$; dry: $t = -3.48$, $P = 0.011$; very dry: $t = -5.73$, $P < 0.001$) and controls (normal: $t = -4.26$, $P = 0.001$; dry: $t = -4.09$, $P = 0.002$; very dry: $t = -4.89$, $P < 0.001$; Table 4; Figure 3A). Abundance of rosette or ascending growth-forms were significantly and negatively affected by number of added nutrients and positively affected by precipitation (Table 4). Contrary to graminoids, rosette species were less abundant in three nutrients treatment (0.10 ± 0.021) compared to one nutrient (0.26 ± 0.03 ; $z = -4.64$, $P < 0.001$), two nutrients (0.19 ± 0.03 ; $z = -2.76$, $P = 0.035$), and marginally to controls (0.25 ± 0.02 ; $z = -2.50$, $P = 0.076$). Rosette species were also, marginally significantly more abundant during the wet year (0.30 ± 0.03) compared to the very dry year (0.19 ± 0.04) ($z = 2.50$, $P = 0.074$). During the very dry year, abundance of erect species was significantly lower in three nutrients treatment (0.05 ± 0.03) compared to one nutrient (0.29 ± 0.09 ; $t = 3.73$, $P = 0.006$) and controls (0.43 ± 0.16 ; $t = 4.30$, $P = 0.001$; Table 4).

We found significantly higher maximum height in communities where three nutrients were added (average species height: $86.93 \text{ cm} \pm 3.19$) compared to one nutrient treatment ($64.32 \text{ cm} \pm 2.28$; $z = 3.27$, $P = 0.007$) and controls ($61.13 \text{ cm} \pm 3.73$; $z = 4.33$, $P < 0.001$), with a significant positive precipitation effect (Table 4; Figure 3B).

Species Leaf Traits

SLA was the only trait with no significant association with precipitation (Table 4; Figure 3C). However, the nutrient addition treatments only significantly affected CWM of SLA during the very dry year, with the three added nutrients exhibiting higher SLA ($29.45 \text{ mm}^2 \cdot \text{mg}^{-1} \pm 2.46$) compared to one nutrient treatment ($24.11 \text{ mm}^2 \cdot \text{mg}^{-1} \pm 1.35$) ($z = 3.30$, $P = 0.002$) and controls ($23.15 \text{ mm}^2 \cdot \text{mg}^{-1} \pm 2.03$) ($z = 3.63$, $P = 0.006$) (Table 4; Figure 3C). LDMC was also higher in three nutrients ($301.83 \text{ mg} \cdot \text{g}^{-1} \pm 15.31$) compared to one nutrient treatment ($227.32 \text{ mg} \cdot \text{g}^{-1} \pm 20.86$) ($t = -4.13$, $P = 0.002$) and to controls ($236.62 \text{ mg} \cdot \text{g}^{-1} \pm 16.57$) ($t = -3.16$, $P = 0.024$) during the very dry year. Nonetheless, precipitation had an overall significant negative effect on LDMC (Table 4).

Species Reproductive Strategies

Across all treatments and precipitation years, onset of flowering occurred between February and April, and was significantly affected by both the number of added nutrients and precipitation (Table 4; Figure 3D). Overall our grassland community responded with an earlier onset of flowering with increasing number of added nutrients. Communities had later flowering during the very dry year compared to normal ($t = -2.84$, $P = 0.027$) and wet years ($t = -2.84$, $P = 0.061$). Flowering duration, which varied between 3 and 6 months, was shorter during the very dry year compared to the wet year ($z = 4.01$, $P < 0.001$), normal year ($z = 4.83$, $P < 0.001$), and dry year ($z = 3.72$, $P = 0.001$). Also, only in the very dry year communities with three added nutrients had shorter flowering duration than one ($t = 3.15$, $P = 0.025$) and two nutrients treatments ($t = 3.14$, $P = 0.025$).

Species Dispersal Strategies

Across all nutrient treatments and precipitation years, our grassland community was dominated by species with wind dispersal (0.71 ± 0.02), followed by species with dispersal by gravity (0.26 ± 0.01); and rarely by internal (0.02 ± 0.003) or external animal transport (0.01 ± 0.002). Dispersal modes were unaffected by number of added nutrients (Table 4). Abundance of species with wind dispersal was highest during the very dry year (0.89 ± 0.02) compared to the, wet (0.63 ± 0.03 ; $z = -3.92$, $P < 0.001$), normal (0.71 ± 0.03 ; $z = -4.16$, $P < 0.001$), and the dry year (0.62 ± 0.03 ; $z = -5.33$, $P < 0.001$), while species with dispersal by gravity or internal animal transport were significantly less abundant (Table 4).

Species Nutrient Uptake Strategies

Most species in our grassland were non N-fixers (0.83 ± 0.015 , average across treatments and years). Abundance of N-fixing species was not significantly affected by number of added nutrients (Table 4), and represented 0.14 ± 0.015 (average across treatments and years) of our grassland community. N-fixing species were significantly negatively affected by very low precipitation, compared to the wet year ($z = 6.60$; $P < 0.001$), normal year ($z = 5.82$, $P < 0.001$), and dry year ($z = -7.64$, $P < 0.001$) (Figure 3E). During the very dry year, N-fixing species decreased by 94%, from 0.18 ± 0.017 (3-year

TABLE 4 | Statistical results of the linear mixed models for CWM for each functional trait.

Trait	Category	Number added nutrients			Precipitation			Number added nutrients × Precipitation		
		df	F	P	df	F	P	df	F	P
VEGETATIVE										
Growth-form	Ascending	1	5.86	0.022 ⁽⁻⁾	1	14.74	<0.001 ⁽⁺⁾	1	0.65	0.421
	Graminoid	1	54.91	<0.001 ⁽⁺⁾	1	55.55	<0.001 ⁽⁻⁾	1	8.51	0.045 ⁽⁻⁾
	Rosette	1	12.2	0.002 ⁽⁻⁾	1	15.43	<0.001 ⁽⁺⁾	1	1.56	0.215
	Erect	1	15.11	<0.001 ⁽⁻⁾	1	15.4	<0.001 ⁽⁻⁾	1	14.99	<0.001 ⁽⁺⁾
	Prostrate	1	0.45	0.507	1	49.13	<0.001 ⁽⁺⁾	1	0.06	0.804
Maximum height		1	21.53	<0.001 ⁽⁺⁾	1	9.55	0.003 ⁽⁺⁾	1	2.17	0.144
LEAF										
SLA		1	9.56	0.005 ⁽⁺⁾	1	1.07	0.3035	1	6.22	0.015 ⁽⁻⁾
LDMC		1	14.93	0.001 ⁽⁺⁾	1	51.96	<0.001 ⁽⁻⁾	1	5.9	0.017 ⁽⁻⁾
REPRODUCTIVE										
Onset flowering		1	10.63	0.003 ⁽⁻⁾	1	54.94	<0.001 ⁽⁻⁾	1	3	0.087
Duration flowering		1	0.02	0.88	1	85.42	<0.001 ⁽⁺⁾	1	8.52	0.005 ⁽⁺⁾
REGENERATIVE										
Dispersal mode	Wind	1	0.04	0.86	1	36.15	<0.001 ⁽⁻⁾	1	0.95	0.332
	Gravity	1	0.01	0.907	1	44.08	<0.001 ⁽⁺⁾	1	1.72	0.193
	External animal	1	10.31	0.003 ⁽⁻⁾	1	13.75	0.000 ⁽⁺⁾	1	0.04	0.834
	Internal animal	1	3.03	0.093	1	9.49	0.003 ⁽⁺⁾	1	2	0.16
BELOW-GROUND										
Nutrient uptake	N-fixing	1	0.13	0.716	1	53.84	<0.001 ⁽⁺⁾	1	0.38	0.538
	Root-hemiparasite	1	40.72	<0.001 ⁽⁻⁾	1	14.28	<0.001 ⁽⁺⁾	1	0.05	0.832

Number of added nutrients and precipitation year, as well as their interactions, were used as fixed effects explanatory variables. Plots were used as a random factor. Significant results ($P \leq 0.05$) are in bold. Superscript signs (-) or (+) indicate a negative or positive effect of explanatory variables.

average) to 0.01 ± 0.003 (very dry year). Although, abundance of hemi-parasites species was low in our grassland, it was further decreased with the addition of three nutrients treatment (0.01 ± 0.005) compared to controls (0.09 ± 0.012), during the normal ($t = 4.92$, $P < 0.001$) and the dry years ($t = 5.92$, $P < 0.001$).

Functional Dispersion of Traits (FDIs)

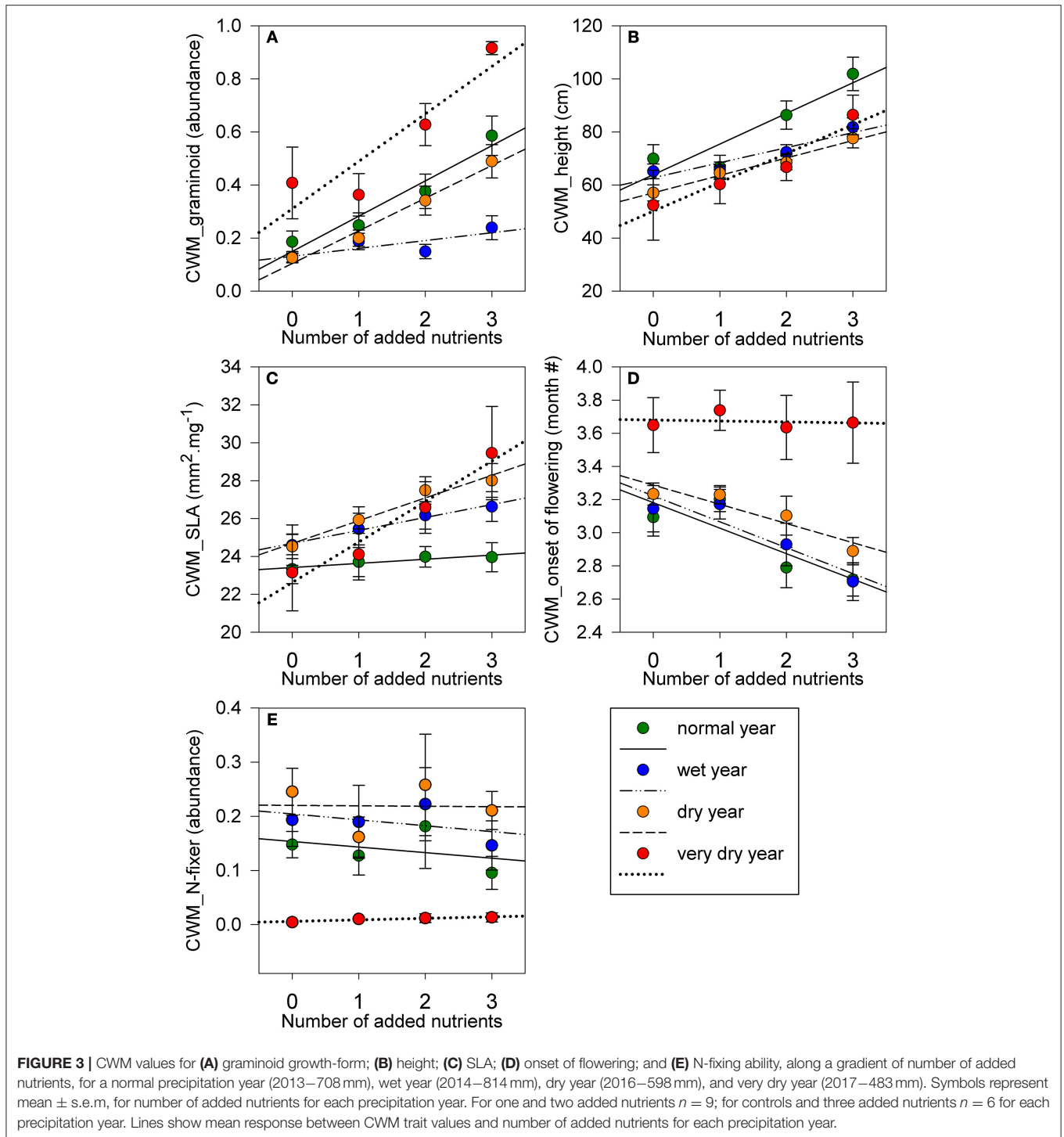
The functional dispersion of growth-form was significantly negatively affected by nutrient addition (Table 5), but only in the very dry year, with three nutrients having the lowest diversity in growth-form compared to the other treatments: two added nutrients ($t = 5.91$, $P < 0.001$); one added nutrients ($t = 7.11$, $P < 0.001$) and controls ($t = 4.12$, $P = 0.002$) (Figure 4A). FDIs of growth-form was significantly lower during the very dry year compared to other years (wet: $z = 4.27$; $P < 0.001$, normal: $z = 5.13$, $P < 0.001$, and dry year: $z = 4.21$, $P < 0.001$).

FDIs of most traits were not affected by increasing number of added nutrients but they were significantly affected by precipitation (Table 5). FDIs of height, increased overall with precipitation, whereas, FDIs of the onset of flowering and flowering duration decreased with precipitation (Table 5; Figures 4B,C). FDIs of dispersal mode was significantly lower during the very dry year (0.15 ± 0.02) compared to the wet (0.30 ± 0.01 ; $z = 4.41$, $P < 0.001$), normal (0.27 ± 0.01 ; $z = 4.48$, $P < 0.001$), and the dry year (0.31 ± 0.01 ; $z = 5.04$, $P < 0.001$).

FDIs of nutrient uptake strategy followed the same trend and was significantly lower during the very dry year compared to the wet ($z = 8.15$, $P < 0.001$), normal ($z = 9.29$, $P < 0.001$), and the dry year ($z = 10.07$, $P < 0.001$) (Table 5; Figure 4D). FDIs of SLA and LDMC were unaffected by nutrient addition and precipitation (Table 5). The FDIs of the combined six traits (multi-trait FDIs) decreased significantly during the very dry year in all nutrient treatments compared to the remaining years (wet: $z = 5.99$, $P < 0.001$; normal: $z = 6.75$, $P < 0.001$, and dry year: $z = 7.05$, $P < 0.001$) but it was not affected by the number of added nutrients (Table 5; Figure 4E).

Functional Traits and Productivity

Increasing number of added nutrients significantly decreased species richness and significantly increased productivity as our grassland is co-limited by multiple nutrients (Nogueira et al., unpublished). However, species richness had no significant relationship with productivity ($\rho = -0.046$, $P = 0.621$; $n = 120$), whereas most of the CWM trait values were significantly related to productivity (Table 6). Higher abundance of graminoid and prostrate species were significantly positively related to productivity, as were taller species, or/and higher LDMC. Contrarily, high abundance of species with an erect or rosette growth form were significantly negatively related to productivity (Table 6). FDIs of the analyzed traits had no relation with productivity (Table 6).



DISCUSSION

Overall, our results showed a combined effect of nutrients and precipitation on the community functional trait structure (CWM), while functional diversity (FDIs) was mainly affected by precipitation. Nutrient addition only decreased functional diversity of growth-forms in the very dry year. A clear change in species composition was observed during the very dry year

and in three nutrients addition treatment, which was reflected by marked changes in community functional structure and trait diversity.

Precipitation was the major environmental filter determining CWM and FDIs. This is in agreement with the high inter-annual precipitation variability and low soil fertility context in which Mediterranean annual grasslands have coevolved (Noy-Meir, 1973; Peco et al., 1998; Pérez-Camacho et al., 2012);

TABLE 5 | Statistical results of the linear mixed models analyzing the effects of nutrient addition and precipitation on functional dispersion (FDIs) for each functional trait and for a multi-trait combination of six relevant traits.

Trait	Number added nutrients			Precipitation			Number added nutrients × Precipitation		
	df	F	P	df	F	P	df	F	P
Growth-form	1	6.42	0.017 ⁽⁻⁾	1	44.72	<0.001 ⁽⁺⁾	1	5.09	0.027 ⁽⁺⁾
Height	1	0.6	0.444	1	7.04	0.009 ⁽⁺⁾	1	0.01	0.911
SLA	1	1.63	0.213	1	0.01	0.926	1	0.02	0.886
LDMC	1	0	0.984	1	3.1	0.082	1	0.43	0.514
Onset flowering	1	1.42	0.243	1	19.56	<0.001 ⁽⁻⁾	1	0.02	0.881
Duration flowering	1	0.09	0.772	1	9.4	0.003 ⁽⁻⁾	1	0.55	0.461
Dispersal mode	1	1.88	0.182	1	34.47	<0.001 ⁽⁺⁾	1	1.09	0.299
Nutrient uptake	1	3.01	0.094	1	67.31	<0.001 ⁽⁺⁾	1	0.05	0.832
Multi-trait	1	3.39	0.076	1	53.93	<0.001 ⁽⁺⁾	1	0.64	0.425

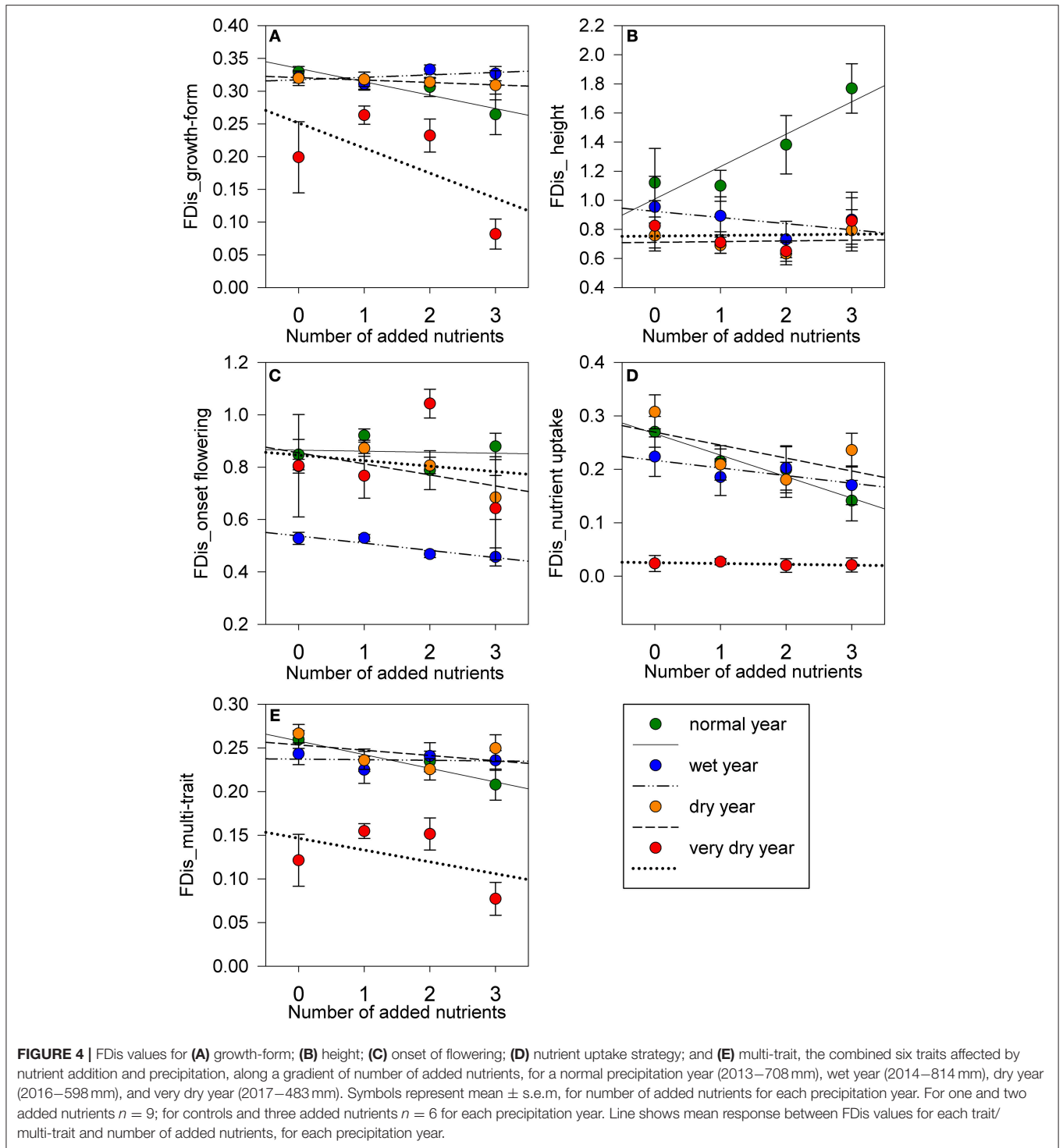
Number of added nutrients and precipitation years, as well as their interactions, were used as fixed effects explanatory variables. Plots were used as a random factor. Significant results ($P \leq 0.05$) are in bold. Superscript signs (-) or (+) indicate a negative or positive effect of explanatory variables.

(Carmona et al., 2015; Rota et al., 2017). Functioning and resilience of the Mediterranean grasslands is probably mostly based on a high functional diversity of traits responsive to different levels of soil water availability combined with resource conservative traits (Pérez-Camacho et al., 2012; Carmona et al., 2015). The decrease in co-limitation by water and nutrients increased the dominance of traits associated with resource-acquisition such as maximum height (Westoby et al., 2002; Eskelinen and Harrison, 2015) but not SLA. Graminoids responded positively to nutrient addition as found in other studies (Hautier et al., 2009; Spasojevic and Suding, 2012; Helsen et al., 2014; Niu et al., 2014; Harpole et al., 2016) but negatively to precipitation (but see Harpole et al., 2007). Graminoids have higher root cation exchange capacity compared to most dicots (Woodward et al., 1984; DiTommaso and Aarssen, 1989) and higher root density (Craine et al., 2001) which makes them highly competitive for available nutrients. Interestingly, in the wet year, a low abundance year for graminoids, the functional group did not respond to nutrient addition. Indeed, Collins et al. (2012) observed that irrigation increased the abundance of forb species. On the contrary, during the very dry year, graminoids increased by two-fold comparing to other years, and were better competitors for nutrients. This was also supported by the increase in SLA and LDMC in the three added nutrient communities in the very dry year. In accordance, Wellstein et al. (2017) in a Mediterranean grassland, found that graminoids had a higher SLA under experimental drought and demonstrated better growth performance, which was most likely related to their strategy to allocate resources to roots. Additionally, in our study, the FDIs of growth-forms was lowest in the very dry year, particularly in communities with lower co-limitation by nutrients. The niche dimension hypothesis (Harpole and Tilman, 2007) states that the decrease in the number of limiting resources should lead to loss of diversity. However, in our study it was during the very dry year, with a high limitation by soil water, that a decrease in FDIs of growth-forms, dispersal modes, nutrient uptake strategies, as well as FDIs of the main six functional traits combined, was observed. Contrastingly, during

the wet year, with the highest soil water availability, only the FDIs of onset and duration of flowering decreased. Our results indicate that the mechanisms underlying functional diversity loss can be dependent on the environmental and evolutionary context.

In our study, the increase in species height and SLA in three added nutrients communities probably resulted from the increase of graminoids which were taller and had higher SLA than rosette and erect growth-forms. This pattern was also observed by Ansquer et al. (2009) in grassland communities in the Pyrenees. Dominance of graminoids with increased nutrients may also help to explain the earlier flowering in nutrient rich communities, except in the very dry year. Later flowering during the very dry year is somewhat counterintuitive. If abundance of graminoids increased during the very dry year, onset of flowering should have been earlier. Also, early flowering is one of the many plant strategies to cope with increased water limitation (e.g., Shavrukov et al., 2017). However, in our study, *Vulpia bromoides* was the dominant graminoid species during the very dry year in all treatments. This species has a later onset and a shorter flowering duration which may explain main reproductive strategy observed during that year. During a wet year, we found a reduction in FDIs of reproductive traits, which suggests that trait filtering, may also occur under more favorable conditions (Bernard-Verdier et al., 2012).

Species in our grassland were mostly dispersed by wind and gravity. Although nutrient addition had no effect on observed plant dispersal modes, drought affected wind dispersal positively and gravity dispersal negatively. The higher abundance of graminoids, all wind-dispersal species and the significant reduction of N-fixing species, most of them gravity-dispersal species, during the very dry year explains this result. In Mediterranean environments with low and highly fluctuating precipitation, small or large seeds can be both optimal (Volis and Bohrer, 2013). However, the larger seed production and greater longevity in the seed bank associated with small seeded species can be advantageous with increased aridity (Volis and Bohrer, 2013).



The very dry year had a negative effect on the abundance of N-fixing species as observed in other studies (e.g., Espigares and Peco, 1993, 1995; Del Pozo and Aronson, 2000). Also, N-fixing species were found to be highly vulnerable to drought during their reproductive phase, which may shorten the duration of reproductive development, reducing seed number and weight (Daryanto et al., 2015). As N-fixing species have, generally, a

positive effect on the nitrogen budget of grasslands (Spehn et al., 2002), the projected increase in the frequency and intensity of droughts in the Mediterranean region, can negatively affect the nitrogen budget. Although in our study there was no association between added nutrients and abundance of N-fixing species, we found a negative correlation between N added treatments and abundance of N-fixing species, in accordance with other studies

TABLE 6 | Spearman correlations (ρ) between CWM (community weighted mean) and functional dispersion (FDis) of each trait and productivity ($n = 120$; for all treatments and for the four years).

Trait	Category	CWM		FDis	
		Spearman ρ	<i>P</i>	Spearman ρ	<i>P</i>
VEGETATIVE					
Growth-form	Ascending	0.001	0.995	0.075	0.412
	Graminoid	0.33	<0.001		
	Rosette	-0.256	0.005		
	Erect	-0.317	<0.001		
	Prostrate	0.242	0.008		
Maximum height		0.643	<0.001	0.119	0.194
LEAF					
SLA		0.157	0.086	0.095	0.300
LDMC		0.194	0.034	-0.074	0.420

Significant results ($P \leq 0.05$) are in bold.

(DiTommaso and Aarssen, 1989; Suding et al., 2005; Silvertown et al., 2006).

Although species richness may be a useful indicator of ecosystem functioning (Tilman et al., 1997; Hector et al., 1999; Hector and Bagchi, 2007), in our study CWM but not species richness was correlated with productivity, an aggregate property reflecting ecosystem functioning. In line with the “mass ratio hypothesis” (Grime, 1998), we found that graminoids, an abundant growth-form in our grassland, contributed significantly to aboveground biomass. However, less abundant traits such as prostrate growth-forms were also positively related to productivity, suggesting that even the loss of low abundance traits may be of great importance to ecosystem functioning (McLaren and Turkington, 2010). Thus, global change drivers that have a significant impact on species composition (Dornelas et al., 2014) will most probably have a strong effect on ecosystem processes (Tilman et al., 1997). Beyond functional structure, functional diversity has also been found to be associated to ecosystem processes (Tilman et al., 1997; Valencia et al., 2015). In more productive systems, a few abundant species with similar traits (low functional diversity) usually dominate communities, whereas in low productive systems there is frequently a higher functional diversity (niche complementarity) (e.g., Tilman et al., 1997; Rolo et al., 2016). However, in our grassland we found no relation between functional diversity and productivity, suggesting that under strong environmental gradients (precipitation variability and nutrient availability), community structure was the main determinant of productivity as observed for other grasslands (Zhu et al., 2016).

CONCLUSIONS

Our results revealed an important shift in the mean community functional trait composition of our Mediterranean grassland, with decreased water and nutrient co-limitation. Precipitation was the main driver of functional diversity, affecting most of the

studied traits. However, other factors such as air temperature can interact with total and distribution of precipitation to affect grassland composition (Peco et al., 1998; Zavaleta et al., 2003; Miranda et al., 2009; Nogueira et al., 2017) and thus the functional attributes of the community. We found, that nutrient addition only decreased growth-form FDis during the very dry year, highlighting the importance of the interacting effects of global change drivers on grassland functional diversity. These results will have strong implication to Mediterranean grassland dynamics mainly within global change contexts. Indeed, higher fertilization and increased drought frequency are likely to affect grassland functional diversity. We show that interacting global change drivers may further constraint trait variability in Mediterranean grasslands. Moreover, higher drought frequency will likely favor graminoids, ultimately affecting the diversity of the seed bank which may decrease, resulting in lower resilience and resistance of these ecosystems to global change (Volaire et al., 2014). This should be further tested using long-term grassland studies (e.g., Crawley et al., 2005) coupled to climate manipulation. Our work further supports that species functional traits may be more predictive of ecosystem processes than species richness making it an important tool to understand ecosystem responses to global changes.

DATA AVAILABILITY STATEMENT

The raw data supporting the conclusions of this manuscript will be made available by the authors, without undue reservation, to any qualified researcher.

AUTHOR CONTRIBUTIONS

CN and MC conceived the idea and designed methodology. CN collected the data. AN and CN analyzed the data. CN and MC led the writing of the manuscript. MB, CB, and RM contributed critically to the draft. All authors gave final approval for publication.

FUNDING

The authors acknowledge the financial support of the Portuguese Science Foundation (Fundação para a Ciência e Tecnologia-FCT), through the project IF/740/2014 and PTDC/AAG-GLO/0045/2014 and fellowships to CN (SFRH/BD/88650/2012) and MB (IF/1171/2014). Centro de Estudos Florestais (CEF) a research unit funded by FCT, Portugal (UID/AGR/00239/2013). We are also grateful to FLAD/NSF for funding (A1/Proj 124/12).

ACKNOWLEDGMENTS

The authors acknowledge the Nutrient Network (www.nutnet.org) and Companhia das Lezírias for providing access to the grassland site and permission to undertake research. We thank J. Mendes, A. Horta, P. Pais, L. Marçal, and M. Silva for field and laboratory assistance. We also thank the reviewers for comments on an earlier version of the manuscript.

REFERENCES

- Ansquer, P., Duru, M., Theau, J. P., and Cruz, P. (2009). Convergence in plant traits between species within grassland communities simplifies their monitoring. *Ecol. Indic.* 9, 1020–1029. doi: 10.1016/j.ecolind.2008.12.002
- Bernard-Verdier, M., Navas, M., Vellend, M., Violle, C., Fayolle, A., and Garnier, E. (2012). Community assembly along a soil depth gradient: contrasting patterns of plant trait convergence and divergence in a Mediterranean rangeland. *J. Ecol.* 100, 1422–1433. doi: 10.1111/1365-2745.12003
- Bobbink, R., Hicks, K., Galloway, J., Spranger, T., Alkemade, R., Ashmore, M., et al. (2010). Global assessment of nitrogen deposition effects on terrestrial plant diversity: a synthesis. *Ecol. Appl.* 20, 30–59. doi: 10.1890/08-1140.1
- Borer, E. T., Grace, J. B., Harpole, W. S., MacDougall, A. S., and Seabloom, E. W. (2017). A decade of insights into grassland ecosystem responses to global environmental change. *Nat. Ecol. Evol.* 1:0118. doi: 10.1038/s41559-017-0118
- Bugalho, M. N., and Abreu, J. M. (2008). “The multifunctional role of grasslands,” in *Sustainable Mediterranean Grasslands and their Multi-functions*, eds C. Porqueddu and M. M. Tavares de Sousa (Zaragoza: CIHEAM; FAO; ENMP; SPPE, 2008. Options Méditerranéennes: Série A. Séminaires Méditerranéennes), 25–30.
- Cadotte, M. W., Carscadden, K., and Mirotchnick, N. (2011). Beyond species: functional diversity and the maintenance of ecological processes and services. *J. Appl. Ecol.* 48, 1079–1087. doi: 10.1111/j.1365-2664.2011.02048.x
- Carmona, C. P., Mason, N. W. H., Azcarate, F. M., and Peco, B. (2015). Inter-annual fluctuations in rainfall shift the functional structure of Mediterranean grasslands across gradients of productivity and disturbance. *J. Veg. Sci.* 26, 538–551. doi: 10.1111/jvs.12260
- Castroviejo, S. (1986–2012). *Flora iberica 1-8, 10-15, 17-8, 21*. Madrid: Real Jardín Botánico; CSIC.
- Collins, S. L., Koerner, S. E., Plaut, J. A., Okie, J. G., Brese, D., Calabrese, L. B., et al. (2012). Stability of tallgrass prairie during a 19-year increase in growing season precipitation. *Funct. Ecol.* 26, 1450–1459. doi: 10.1111/j.1365-2435.2012.01995.x
- Cornelissen, J. H. C., Lavorel, S., Garnier, E., Díaz, S., Buchmann, N., Gurvich, D. E., et al. (2003). A handbook of protocols for standardised and easy measurement of plant functional traits worldwide. *Aust. J. Bot.* 51, 335–380. doi: 10.1071/BT02124
- Costa, A. C., Santos, J. A., and Pinto, J. G. (2012). Climate change scenarios for precipitation extremes in Portugal. *Theor. Appl. Climatol.* 108, 217–234. doi: 10.1007/s00704-011-0528-3
- Craine, J. M., Froehle, J., Tilman, D. G., Wedin, D. A., and Chapin, F. S. III. (2001). The relationships among root and leaf traits of 76 grassland species and relative abundance along fertility and disturbance gradients. *Oikos* 2, 274–285. doi: 10.1034/j.1600-0706.2001.930210.x
- Crawley, A. M. J., Johnston, A. E., Silvertown, J., Dodd, M., Mazancourt, C., De Heard, M. S., et al. (2005). Determinants of species richness in the parks grass experiment. *Am. Nat.* 165, 179–192. doi: 10.1086/427270
- Crimmins, T. M., Crimmins, M. A., and David Bertelsen, C. (2013). Spring and summer patterns in flowering onset, duration, and constancy across a water-limited gradient. *Am. J. Bot.* 100, 1137–1147. doi: 10.3732/ajb.12.00633
- Daryanto, S., Wang, L., and Jacinthe, P. A. (2015). Global synthesis of drought effects on food legume production. *PLoS ONE* 10:e0127401. doi: 10.1371/journal.pone.0127401
- Daubenmire, R. (1959). A canopy-coverage method of vegetation analysis. *Northwest Sci.* 33, 43–64.
- Del Pozo, A., and Aronson, J. (2000). “Ecophysiology of annual legumes,” in *Legumes for Mediterranean Forage Crops, Pastures and Alternative Uses*, ed L. Sulas (Zaragoza: CIHEAM), 223–230.
- DeMalach, N., Zaady, E., and Kadmon, R. (2017). Contrasting effects of water and nutrient additions on grassland communities: a global meta-analysis. *Glob. Ecol. Biogeogr.* 26, 983–992. doi: 10.1111/gub.12603
- Díaz, S., and Cabido, M. (2001). Vive la différence: plant functional diversity matters to ecosystem processes. *Trends Ecol. Evol.* 16, 646–655. doi: 10.1016/S0169-5347(01)02283-2
- Díaz, S., Lavorel, S., de Bello, F., Quétier, F., Grigulis, K., and Robson, T. M. (2007). Incorporating plant functional diversity effects in ecosystem service assessments. *Proc. Natl. Acad. Sci. U.S.A.* 104, 20684–20689. doi: 10.1073/pnas.0704716104
- DiTommaso, A., and Aarssen, L. W. (1989). Resource manipulations in natural vegetation: a review. *Vegetatio* 84, 9–29. doi: 10.1007/BF00054662
- Dornelas, M., Gotelli, N. J., McGill, B., Shimadzu, H., Moyes, F., Sievers, C., et al. (2014). Assemblage time series reveal biodiversity change but not systematic loss. *Science* 344, 296–299. doi: 10.1126/science.1248484
- Dudney, J., Hallett, L. M., Larios, L., Farrer, E. C., Spotswood, E. N., Stein, C., et al. (2017). Lagging behind: have we overlooked previous-year rainfall effects in annual grasslands? *J. Ecol.* 105, 484–495. doi: 10.1111/1365-2745.12671
- Eskelinen, A., and Harrison, S. P. (2015). Resource colimitation governs plant community responses to altered precipitation. *Proc. Natl. Acad. Sci. U.S.A.* 112, 13009–13014. doi: 10.1073/pnas.1508170112
- Espigares, T., and Peco, B. (1993). Mediterranean pasture dynamics: the role of germination. *J. Veg. Sci.* 4, 189–194. doi: 10.2307/3236104
- Espigares, T., and Peco, B. (1995). Mediterranean annual pasture dynamics: impact of autumn drought. *J. Ecol.* 83, 135–142. doi: 10.2307/2261157
- Flores-Moreno, H., Reich, P. B., Lind, E. M., Sullivan, L. L., Seabloom, E. W., Yahdjian, L., et al. (2016). Climate modifies response of non-native and native species richness to nutrient enrichment. *Philos. Trans. R. Soc. B Biol. Sci.* 371:20150273. doi: 10.1098/rstb.2015.0273
- Franco, J. A. (1971). *Nova Flora de Portugal (Continente e Açores) Vol. I*. Lisboa.
- Franco, J. A. (1984). *Nova Flora de Portugal (Continente e Açores) Vol. II*. Lisboa.
- Garnier, E., Cordonnier, P., Guillermin, J. L., and Sonié, L. (1997). Specific leaf area and leaf nitrogen concentration in annual and perennial grass species growing in Mediterranean old-fields. *Oecologia* 111, 490–498. doi: 10.1007/s004420050
- Garnier, E., Lavorel, S., Ansquer, P., Castro, H., Cruz, P., Dolezal, J., et al. (2007). Assessing the effects of land-use change on plant traits, communities and ecosystem functioning in grasslands: a standardized methodology and lessons from an application to 11 European sites. *Ann. Bot.* 99, 967–985. doi: 10.1093/aob/mcl215
- Giorgi, F. (2006). Climate change hot-spots. *Geophys. Res. Lett.* 33, 1–4. doi: 10.1029/2006GL025734
- Grime, J. P. (1998). Benefits of plant diversity to ecosystems: immediate, filter and founder effects. *J. Ecol.* 86, 902–910. doi: 10.1046/j.1365-2745.1998.00306.x
- Harpole, W. S., Potts, D. L., and Suding, K. N. (2007). Ecosystem responses to water and nitrogen amendment in a California grassland. *Glob. Chang. Biol.* 13, 2341–2348. doi: 10.1111/j.1365-2486.2007.01447.x
- Harpole, W. S., Sullivan, L. L., Lind, E. M., Firn, J., Adler, P. B., Borer, E. T., et al. (2016). Addition of multiple limiting resources reduces grassland diversity. *Nature* 537, 93–96. doi: 10.1038/nature19324
- Harpole, W. S., and Tilman, D. (2007). Grassland species loss resulting from reduced niche dimension. *Nature* 446, 791–793. doi: 10.1038/nature05684
- Hautier, Y., Niklaus, P. A., and Hector, A. (2009). Competition for light causes plant biodiversity loss after eutrophication. *Science* 324, 636–638. doi: 10.1126/science.1169640
- Hector, A., and Bagchi, R. (2007). Biodiversity and ecosystem multifunctionality. *Nature* 448, 188–190. doi: 10.1038/nature05947
- Hector, A., Schmid, B., Beierkuhnlein, C., Caldeira, M. C., Diemer, M., Dimitrakopoulos, P. G., et al. (1999). Plant diversity and productivity experiments in European grasslands. *Science* 286, 1123–1127. doi: 10.1126/science.286.5442.1123
- Helsen, K., Ceulemans, T., Stevens, C. J., and Honnay, O. (2014). Increasing soil nutrient loads of European semi-natural grasslands strongly alter plant functional diversity independently of species loss. *Ecosystems* 17, 169–181. doi: 10.1007/s10021-013-9714-8
- Instituto Nacional de Meteorologia e Geofísica (INMG) (1991). *O clima de Portugal. Normas Climatológicas da Região Ribatejo e Oeste, Correspondentes a 1961–1990, 2ª região*. Lisboa.
- IUSS Working Groups WRB (2006). *World Reference Base for Soil Resources 2006*. Rome.
- Janeček, S., de Bello, F., Hornik, J., Bartos, M., Cerny, T., Dolezal, J., et al. (2013). Effects of land-use changes on plant functional and taxonomic diversity along a productivity gradient in wet meadows. *J. Veg. Sci.* 24, 898–909. doi: 10.1111/jvs.12012
- Kovats, R. S., Valentini, R., Bouwer, L. M., Georgopoulou, E., Jacob, D., Martin, E., et al. (2014). “Europe,” in *Climate Change 2014: Impacts, Adaptation, and Vulnerability. Part B: Regional Aspects. Contribution of Working Group II to the Fifth Assessment Report of the Intergovernmental Panel on Climate Change*, eds

- V. R. Barros, C. B. Field, D. J. Dokken, M. D. Mastrandrea, K. J. Mach, T. E. Bilir, et al. (New York, NY: Cambridge University Press), 1267–1326.
- Labilerté, E., and Legendre, P. (2010). A distance-based framework for measuring functional diversity from multiple traits. A distance-based framework for measuring from multiple traits functional diversity. *Ecology* 91, 299–305. doi: 10.1890/08-2244.1
- Labilerté, E., and Shipley, B. (2011). *FD: Measuring Functional Diversity From Multiple Traits, and Other Tools for Functional Ecology*. R package version, 10–11.
- Lepš, J., de Bello, F., Šmilauer, P., and Doležal, J. (2011). Community trait response to environment: disentangling species turnover vs intraspecific trait variability effects. *Ecography* 34, 856–863. doi: 10.1111/j.1600-0587.2010.06904.x
- McGill, B. J., Enquist, B. J., Weiher, E., and Westoby, M. (2006). Rebuilding community ecology from functional traits. *Trends Ecol. Evol.* 21, 178–185. doi: 10.1016/j.tree.2006.02.002
- McLaren, J. R., and Turkington, R. (2010). Ecosystem properties determined by plant functional group identity. *J. Ecol.* 98, 459–469. doi: 10.1111/j.1365-2745.2009.01630.x
- Miranda, J. D., Padilla, F. M., and Pugnaire, F. I. (2009). Response of a Mediterranean semiarid community to changing patterns of water supply. *Perspect. Plant Ecol. Evol. Syst.* 11, 255–266. doi: 10.1016/j.ppees.2009.05.001
- Moullot, D., Villéger, S., Scherer-Lorenzen, M., and Mason, N. W. H. (2011). Functional structure of biological communities predicts ecosystem multifunctionality. *PLoS ONE* 6:e17476. doi: 10.1371/journal.pone.0017476
- Niu, K., Choler, P., de Bello, F., Mirotnick, N., Du, G., and Sun, S. (2014). Fertilization decreases species diversity but increases functional diversity: a three-year experiment in a Tibetan alpine meadow. *Agric. Ecosyst. Environ.* 182, 106–112. doi: 10.1016/j.agee.2013.07.015
- Nogueira, C., Bugalho, M. N., Pereira, J. S., and Caldeira, M. C. (2017). Extended autumn drought, but not nitrogen deposition, affects the diversity and productivity of a Mediterranean grassland. *Environ. Exp. Bot.* 138, 99–108. doi: 10.1016/j.envexpbot.2017.03.005
- Noy-Meir, I. (1973). Desert ecosystems: environment and producers. *Annu. Rev. Ecol. Evol. Syst.* 4, 25–51. doi: 10.1146/annurev.es.04.110173.000325
- Nunes, A., Köbel, M., Pinho, P., Matos, P., de Bello, F., Correia, O., et al. (2017). Which plant traits respond to aridity? A critical step to assess functional diversity in Mediterranean drylands. *Agric. For. Meteorol.* 239, 176–184. doi: 10.1016/j.agrformet.2017.03.007
- Oksanen, J. (2011). *Multivariate Analysis of Ecological Communities in R: Vegan Tutorial*. R package version, 1.
- Oksanen, J., Blanchet, F. G., Kindt, R., Oksanen, M. J., and Suggests, M. (2013). *Package 'Vegan'*. Community Ecology Package Version, 2, 0–0.
- Ordoñez, J. C., Van Bodegom, P. M., Witte, J. P. M., Wright, I. J., Reich, P. B., and Aerts, R. (2009). A global study of relationships between leaf traits, climate and soil measures of nutrient fertility. *Glob. Ecol. Biogeogr.* 18, 137–149. doi: 10.1371/journal.pone.0083735
- Paula, S., and Pausas, J. G. (2013). *BROT: A Plant Trait Database for Mediterranean Basin Species*. Version 2013.06. Available online at: <http://www.uv.es/jgpausas/brot.htm>
- Peco, B., Espigares, T., and Levassor, C. (1998). Trends and fluctuations in species abundance and richness in Mediterranean annual pastures. *Appl. Veg. Sci.* 1, 21–28. doi: 10.2307/1479082
- Peñuelas, J., Poulter, B., Sardans, J., Ciais, P., van der Velde, M., Bopp, L., et al. (2013). Human-induced nitrogen–phosphorus imbalances alter natural and managed ecosystems across the globe. *Nat. Commun.* 4:2934. doi: 10.1038/ncomms3934
- Pérez-Camacho, L., Rebollo, S., Hernández-Santana, V., García-Salgado, G., Pavón-García, J., and Gómez-Sal, A. (2012). Plant functional trait responses to interannual rainfall variability, summer drought and seasonal grazing in Mediterranean herbaceous communities. *Funct. Ecol.* 26, 740–749. doi: 10.1111/j.1365-2435.2012.01967.x
- Pérez-Harguindeguy, N., Diaz, S., Garnier, E., Lavorel, S., Poorter, H., Jaureguiberry, P., et al. (2013). New Handbook for standardized measurement of plant functional traits worldwide. *Aust. J. Bot.* 61, 167–234. doi: 10.1071/BT12225
- Pérez-Ramos, I. M., Voltaire, F., Fattet, M., Blanchard, A., and Roumet, C. (2013). Tradeoffs between functional strategies for resource-use and drought-survival in Mediterranean rangeland species. *Environ. Exp. Bot.* 87, 126–136. doi: 10.1016/j.envexpbot.2012.09.004
- Petchey, O. L., and Gaston, K. J. (2006). Functional diversity: back to basics and looking forward. *Ecol. Lett.* 9, 741–758. doi: 10.1111/j.1461-0248.2006.00924.x
- Pfeister, H., Weiß, L., Müller, J., Boch, S., Socher, S. A., Prati, D., et al. (2013). Community mean traits as additional indicators to monitor effects of land-use intensity on grassland plant diversity. *Perspect. Plant Ecol. Evol. Syst.* 15, 1–11. doi: 10.1016/j.ppees.2012.10.003
- Polley, H. W., Isbell, F. I., and Wilsey, B. J. (2013). Plant functional traits improve diversity-based predictions of temporal stability of grassland productivity. *Oikos* 122, 1275–1282. doi: 10.1111/j.1600-0706.2013.00338.x
- R Core Team (2015). *R: A Language and Environment for Statistical Computing*. Vienna: R Foundation for Statistical Computing. Available online at: <http://www.R-project.org/>
- Rolo, V., Rivest, D., Lorente, M., Kattge, J., and Moreno, G. (2016). Taxonomic and functional diversity in Mediterranean pastures: insights on the biodiversity - productivity trade-off. *J. Appl. Ecol.* 53, 1575–1584. doi: 10.1111/1365-2664.12685
- Rota, C., Manzano, P., Carmona, C. P., Malo, J. E., and Peco, B. (2017). Plant community assembly in Mediterranean grasslands: understanding the interplay between grazing and spatio-temporal water availability. *J. Veg. Sci.* 28, 149–159. doi: 10.1111/jvs.12470
- Sala, O. E., Chapin, F. S. III, Armesto, J. J., Berlow, E., Bloomfield, J., Dirzo, R., et al. (2000). Global biodiversity scenarios for the year 2100. *Science* 287, 1770–1774. doi: 10.1126/science.287.5459.1770
- Shavrukov, Y., Kurishbayev, A., Jatayev, S., Shvidchenko, V., Zotova, L., Koekemoer, F., et al. (2017). Early flowering as a drought escape mechanism in plants: how can it aid wheat production? *Front. Plant Sci.* 8:1950. doi: 10.3389/fpls.2017.01950
- Silvertown, J., Poulton, P., Johnston, E., Edwards, G., Heard, M., and Biss, P. M. (2006). The Park grass experiment 1856–2006: its contribution to ecology. *J. Ecol.* 94, 801–814. doi: 10.1111/j.1365-2745.2006.01145.x
- Spasojevic, M. J., and Suding, K. N. (2012). Inferring community assembly mechanisms from functional diversity patterns: the importance of multiple assembly processes. *J. Ecol.* 100, 652–661. doi: 10.1111/j.1365-2745.2011.01945.x
- Spehn, E. M., Scherer-Lorenzen, M., Schmid, B., Hector, A., Caldeira, M. C., Dimitrakopoulos, P. G., et al. (2002). The role of legumes as a component of biodiversity in a cross-European study of grassland biomass nitrogen. *Oikos* 98, 205–218. doi: 10.1034/j.1600-0706.2002.980203.x
- Stevens, C. J., Duprè, C., Dorland, E., Gaudnik, C., Gowing, D. J. G., Bleeker, A., et al. (2010). Nitrogen deposition threatens species richness of grasslands across Europe. *Environ. Pollut.* 158, 2940–2945. doi: 10.1016/j.envpol.2010.06.006
- Suding, K. N., Collins, S. L., Gough, L., Clark, C., Cleland, E. E., Gross, K. L., et al. (2005). Functional- and abundance-based mechanisms explain diversity loss due to N fertilization. *Proc. Natl. Acad. Sci. U.S.A.* 102, 4387–4392. doi: 10.1073/pnas.0408648102
- Thuiller, W., Lavorel, S., Araújo, M. B., Sykes, M. T., and Colin Prentice, I. (2005). Climate change threats to plant diversity in Europe. *Proc. Natl. Acad. Sci. U.S.A.* 102, 8245–8250. doi: 10.1073/pnas.0409902102
- Tilman, D., and El Haddi, A. (1992). Drought and biodiversity in Grasslands. *Oecologia* 89, 257–264. doi: 10.1007/BF00317226
- Tilman, D., Knops, J., Wedin, D., Reich, P., Ritchie, M., and Siemann, E. (1997). The influence of functional diversity and composition on ecosystem processes. *Science* 277, 1300–1302.
- Valdés, B., Talavera, S., and Fernández-Galiano, E. (eds.). (1987). *Flora Vascular de Andalucía Occidental*. Barcelona: Ketres Ediora S.A.
- Valencia, E., Maestre, F. T., Le Bagousse-Pinguet, Y., Quero, J. L., Tamme, R., Börger, L., et al. (2015). Functional diversity enhances the resistance of ecosystem multifunctionality to aridity in Mediterranean drylands. *New Phytol.* 206, 660–671. doi: 10.1111/nph.13268
- Voltaire, F., Barkaoui, K., and Norton, M. (2014). Designing resilient and sustainable grasslands for a drier future: adaptive strategies, functional traits and biotic interactions. *Eur. J. Agron.* 52, 81–89. doi: 10.1016/j.eja.2013.10.002
- Volis, S., and Bohrer, G. (2013). Joint evolution of seed traits along an aridity gradient: seed size and dormancy are not two substitutable evolutionary traits in temporally heterogeneous environment. *New Phytol.* 197, 655–667. doi: 10.1111/nph.12024

- Wellstein, C., Poschlod, P., Gohlke, A., Chelli, S., Campetella, G., Rosbakh, S., et al. (2017). Effects of extreme drought on specific leaf area of grassland species: a meta-analysis of experimental studies in temperate and sub-Mediterranean systems. *Glob. Chang. Biol.* 23, 2473–2481. doi: 10.1111/gcb.13662
- Westoby, M., Falster, D. S., Moles, A. T., Vesk, P. A., and Wright, I. J. (2002). Plant ecological strategies: some leading dimensions of variation between species. *Annu. Rev. Ecol. Syst.* 33, 125–159. doi: 10.1146/annurev.ecolsys.33.010802.150452
- Woodward, R. A., Harper, K. T., and Tiedemann, A. R. (1984). An ecological consideration of the significance of cation-exchange capacity of roots of some Utah range plants. *Plant Soil* 79, 169–180. doi: 10.1007/BF02182339
- Zavaleta, E. S., Shaw, M. R., Chiariello, N. R., Thomas, B. D., Cleland, E. E., Field, C. B., et al. (2003). Grassland responses to three years of elevated temperature, CO₂, precipitation, and N deposition. *Ecol. Monogr.* 73, 585–604. doi: 10.1890/02-4053
- Zhu, J., Jiang, L., and Zhang, Y. (2016). Relationships between functional diversity and aboveground biomass production in the Northern Tibetan alpine grasslands. *Sci. Rep.* 6:34105. doi: 10.1038/srep34105

Conflict of Interest Statement: The authors declare that the research was conducted in the absence of any commercial or financial relationships that could be construed as a potential conflict of interest.

Copyright © 2018 Nogueira, Nunes, Bugalho, Branquinho, McCulley and Caldeira. This is an open-access article distributed under the terms of the Creative Commons Attribution License (CC BY). The use, distribution or reproduction in other forums is permitted, provided the original author(s) and the copyright owner(s) are credited and that the original publication in this journal is cited, in accordance with accepted academic practice. No use, distribution or reproduction is permitted which does not comply with these terms.